

# SECTION CORNER RECORD

SE 700-400

## BOONE COUNTY SURVEYOR'S OFFICE

State Plane grid coordinates NAD83 (NSRS 2007):  
North: 1708980.17 East: 3146305.02 (U.S. survey feet)

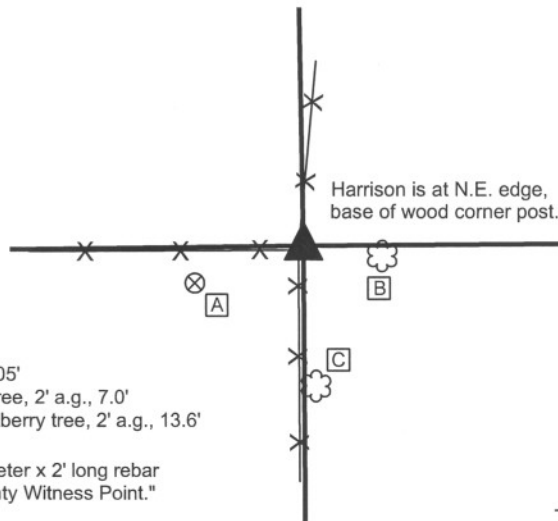
Type of monument: Harrison, 4" disk 'Section Corner'  
Depth: Flush with adjoining grade

Indiana tie card references:  
IN02\_T17NR1E02\_72      IN02\_T17NR1E03\_80  
IN02\_T17NR1E10\_08      IN02\_T17NR1E11\_00



### CORNER WITNESS DETAIL

SCALE 1" = 20'

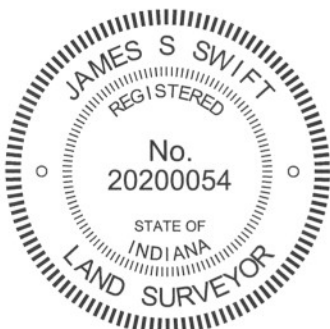


- A - Boone County witness mark, flush, 12.05'
- B - Mag nail set in W. side, 8 inch walnut tree, 2' a.g., 7.0'
- C - Mag nail set in N.W. side, 12 inch hackberry tree, 2' a.g., 13.6'

Boone County witness mark is a 3/8" diameter x 2' long rebar bearing a metal cap stamped "Boone County Witness Point."

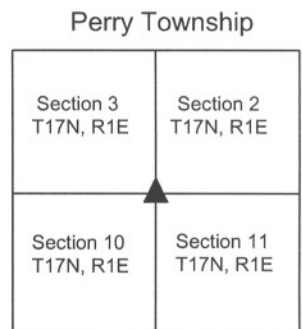
- denotes wire fence

The harrison monument was set in place of three stones found stacked on top of each other. This corner is not specifically identified the old BCS stone records. It is referenced in measurement records within the BCS stone record with references in 1836, 1866 and 1894. No BCS tie cards were found for this corner. The stones found are at the east edge of the old wood corner post at the intersection of fences to the north, south and west. The top stone is generally of a square shape and was found oriented in cardinal directions. The top of the stone was slightly below the surface of the ground, being at the level of the roots of the grass. The second stone was directly beneath the top stone and the third stone was found directly below the second. The stones did not appear to have the characteristics of brace rocks and did appear to have been intentionally set in a column. The stones were all removed and the harrison monument was set in their place. This corner was originally established as a wood post in June, 1820.



Kenneth E. Hedge, County Surveyor

James S. Swift, IN LS 20200054  
February 27, 2009 Revised July 25, 2011



# SECTION CORNER RECORD

SE 700-450

## BOONE COUNTY SURVEYOR'S OFFICE

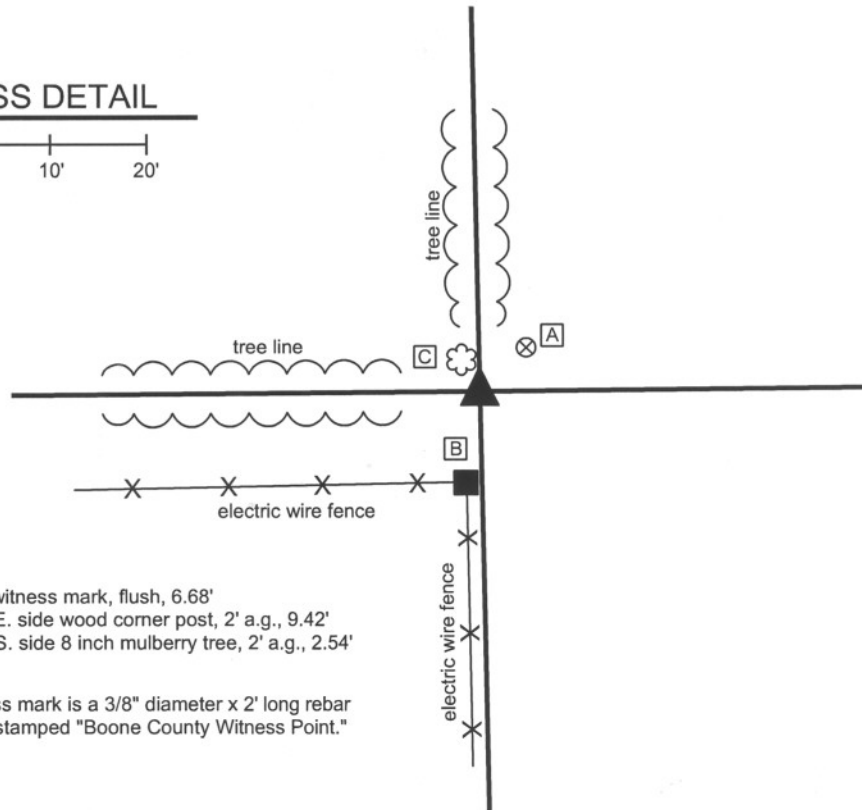
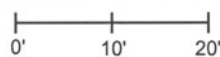
State Plane grid coordinates NAD83 (NSRS 2007):  
North: 1708999.93 East: 3148947.77 (U.S. survey feet)

Type of monument: Harrison, 4" disk 'Section Corner'  
Depth: 2 inches above adjacent ground in concrete pillar

Indiana tie card references:  
IN02\_T17NR1E02\_76  
IN02\_T17NR1E11\_04

### CORNER WITNESS DETAIL

SCALE 1" = 20'



- A - Boone County witness mark, flush, 6.68'
- B - Mag nail set in E. side wood corner post, 2' a.g., 9.42'
- C - Mag nail set in S. side 8 inch mulberry tree, 2' a.g., 2.54'

Boone County witness mark is a 3/8" diameter x 2' long rebar bearing a metal cap stamped "Boone County Witness Point."

The harrison monument was set in the position of a stone found. A BCS record of April 9, 1866 states "Rock 24,15,6 marked +." No BCS tie cards were found for this corner. A survey recorded as Instrument 200700002138 holds the remains of a cedar post as the corner, noting that several non-descript stones were found nearby. The record stone was found broken into two parts. The main part, being the bottom 15 inches, was found on the ground at the east edge of a large granite slab. The smaller part, being the top 9 inches was found slightly northeast, buried just below the grass. The etched "+" is clearly visible on the top part of the stone. The orientation of the two parts indicated that the main section was generally in the position it would have been had the stone fallen over and broken and the top part not moved after breaking away from the bottom part. The main part of the stone falls at the intersection of the old tree lines to the north and west. Remnants of the base of an old cedar post were found approximately 1 foot southeast of the main part of the stone. This fits with a pattern detected at other corners wherein the old post is set adjacent to the record stone. The harrison monument was set in the position of the main part of the stone as found. The two parts of the stone were removed and are on display in the Boone County Surveyor's Office. This corner was originally established as a wood post in June, 1820.



*Kenneth E. Hedge*  
Kenneth E. Hedge, County Surveyor

*James S. Swift*  
James S. Swift, IN LS 20200054

March 11, 2009 Revised July 14, 2010

Perry Twp



PHOTOGRAPHIC DOCUMENTATION

Date of photography: April 18, 2008

Stone hunter Junior Franklin holds the two pieces of the record stone found. The bottom portion was lying upon the ground and the top portion was shallowly buried, slightly to the northeast.



A closer view of the two portions of the stone.



A closer view yet. Note the etched cross on the top portion of the stone. Both portions of the stone were removed and are on display in the Boone County Surveyor's Office.



For details and documentation, refer to related sheet "Section Corner Record."

# SECTION CORNER RECORD

SE 700-500

## BOONE COUNTY SURVEYOR'S OFFICE

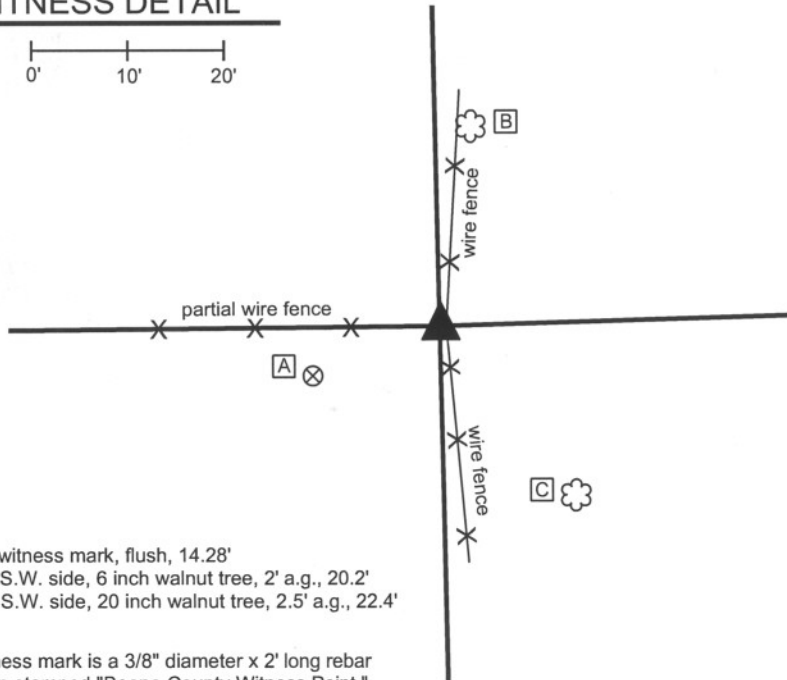
State Plane grid coordinates NAD83 (NSRS 2007):  
North: 1709024.83 East: 3151584.84 (U.S. survey feet)

Type of monument: Harrison, 4" disk 'Section Corner'  
Depth: 2 inches above adjoining ground in concrete pillar

Indiana tie card references:  
IN02\_T17NR1E01\_72      IN02\_T17NR1E02\_80  
IN02\_T17NR1E11\_08      IN02\_T17NR1E12\_00

### CORNER WITNESS DETAIL

SCALE 1" = 20'  
0'      10'      20'



- A - Boone County witness mark, flush, 14.28'
- B - Mag nail set in S.W. side, 6 inch walnut tree, 2' a.g., 20.2'
- C - Mag nail set in S.W. side, 20 inch walnut tree, 2.5' a.g., 22.4'

Boone County witness mark is a 3/8" diameter x 2' long rebar bearing a metal cap stamped "Boone County Witness Point."

The harrison monument was set in place of the base of an old cedar corner post found. A BCS record of March 11, 1915 states "Found Rock at Corner." No BCS tie cards were found for this corner. An old, round, wood corner post is visible at the intersection of fences to the North, South and West. The base of an older, 6 inch by 6 inch cedar post was found immediately west of this post. A small rock, measuring approximately 6x3x4 inches was found against the west edge of the base of the old cedar post. No other rocks were found in the immediate vicinity of this corner. The base of the cedar post was accepted as the best available evidence of the original location of the corner. The post was partially removed and the harrison monument was set in the position of the post. This corner was originally established as a wood post in May, 1820.



*Kenneth E. Hedge*  
Kenneth E. Hedge, County Surveyor

*James S. Swift*

James S. Swift, IN LS 20200054  
March 11, 2009, Revised July 14, 2010

Perry Township

Section 2 T17N, R1E	Section 1 T17N, R1E
Section 11 T17N, R1E	Section 12 T17N, R1E

PHOTOGRAPHIC DOCUMENTATION

Date of photography: April 28, 2008

Base of old cedar post exposed.  
View from northwest.



Current corner post and base of old cedar post.  
View from southwest.



For details and documentation, refer to  
related sheet "Section Corner Record."

# SECTION CORNER RECORD

SE 750-400

## BOONE COUNTY SURVEYOR'S OFFICE

State Plane grid coordinates NAD83 (NSRS 2007):

North: 1706328.32 East: 3146344.73 (U.S. survey feet)

Type of monument: 5/8 inch rebar with aluminum cap stamped 'Boone County Surveyor.'

Depth: One inch below adjacent road surface

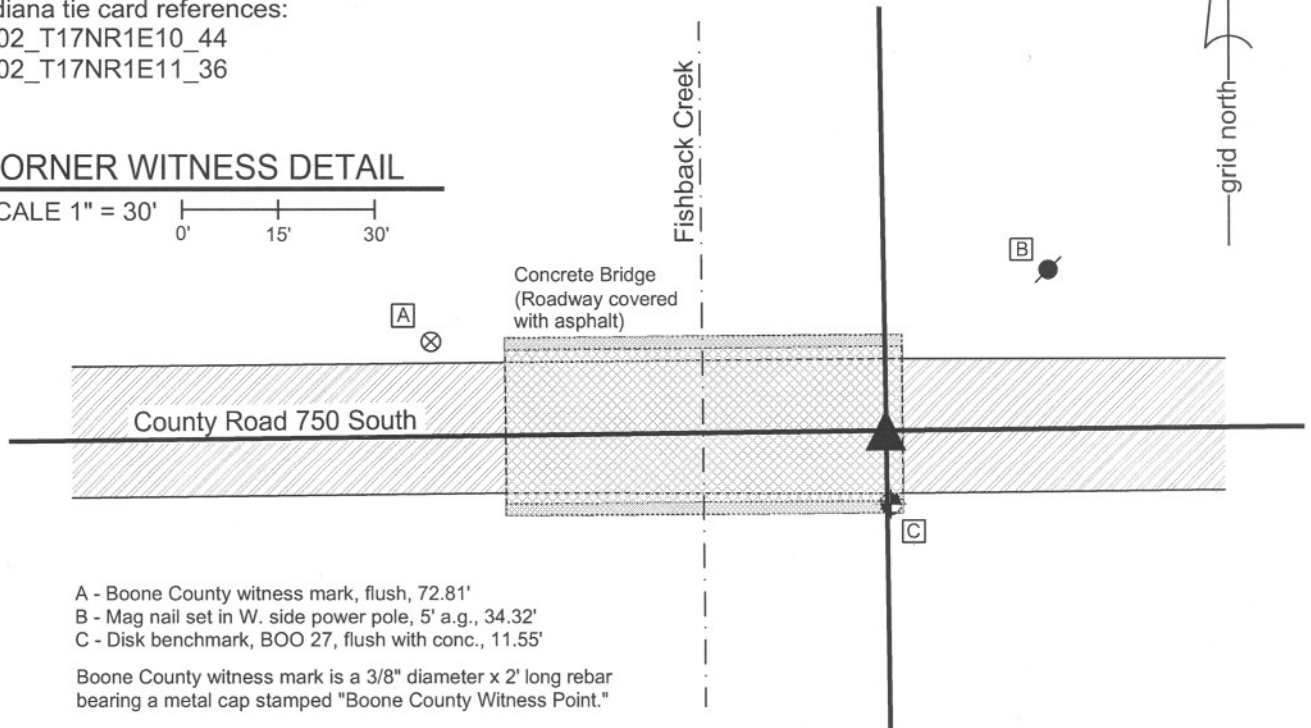
Indiana tie card references:

IN02\_T17NR1E10\_44

IN02\_T17NR1E11\_36

### CORNER WITNESS DETAIL

SCALE 1" = 30'



- A - Boone County witness mark, flush, 72.81'
- B - Mag nail set in W. side power pole, 5' a.g., 34.32'
- C - Disk benchmark, BOO 27, flush with conc., 11.55'

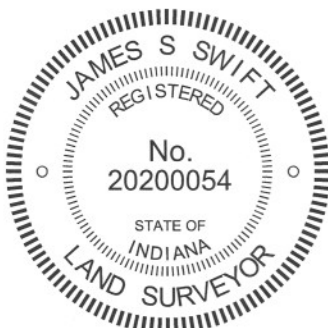
Boone County witness mark is a 3/8" diameter x 2' long rebar bearing a metal cap stamped "Boone County Witness Point."

The rebar was set in the calculated position of a stone set in 1899 and referenced to an old iron bridge.

A BCS record of March 6 & 10, 1899 states "Set rock 8x14x20 + (Nearest edge of S.E. post of Iron bridge = S 50° W, 11 feet). No modern BCS tie cards were found referencing this corner.

The iron bridge referenced in the 1899 record is no longer present, having been replaced by a concrete bridge in approximately 1960. Plans for the current bridge are on file in the Boone County Highway Department, called Pjobject S-619 (1), fiscal year 1959. The plans show dimensions of the former bridge (called present structure on the plans) and show the location of the former bridge relative to the proposed bridge. The position of the existing bridge (proposed bridge on the plans) was located by its physical location in the field and select information shown on the plans was reconstructed relative to the existing bridge. A nail found driven through a bottle cap in an old wood post which is believed to represent Station 10+00, 26.5' Right on the plans, fit precisely with the reconstructed plans, indicating that the bridge was, in fact, built in the position shown on the plans. The former position of the old iron bridge was reconstructed relative to information on the plans. The position of the stone referenced in the 1899 record was established relative to the reconstructed position of the southeast post of the iron bridge. The bearing called for in the 1899 record was assumed to be geodetic, as no form of magnetic declination was stated. A grid to geodetic convergence angle of 0° 26' 35" was applied to the record bearing, as derived from the NGS on-line toolkit. Hence the corner was established at N49° 33' 25" E from the calculated position of the iron bridge, which results in a minimal adjustment of the position of the corner, well within the uncertainties of the reconstructed position of the iron bridge. General uncertainties of approximately 1 foot may be applied to the position of the corner as calculated.

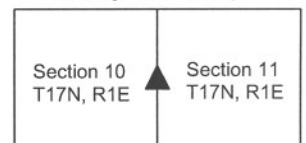
The corner falls on the deck of the bridge, which is made of concrete with a thin layer of asphalt over the top. An aluminum cap stamped 'Boone County Surveyor' was placed on a section of 5/8 inch diameter rebar measuring approximately 2.5 inches. The rebar and the cap were attached to the concrete and asphalt with epoxy in the calculated position of the corner.



*Kenneth E. Hedge*  
Kenneth E. Hedge, County Surveyor

*James S. Swift*  
James S. Swift, IN LS 20200054  
March 1, 2012

Perry Township



# SECTION CORNER RECORD

# SE 750-400

## BOONE COUNTY SURVEYOR'S OFFICE

State Plane grid coordinates NAD83 (2011):

North: 1706328.32 East: 3146344.81 (U.S. survey feet)

Type of monument: Mag Spike set with washer 'Boone County Surveyor.'

Depth: Flush with adjacent road surface

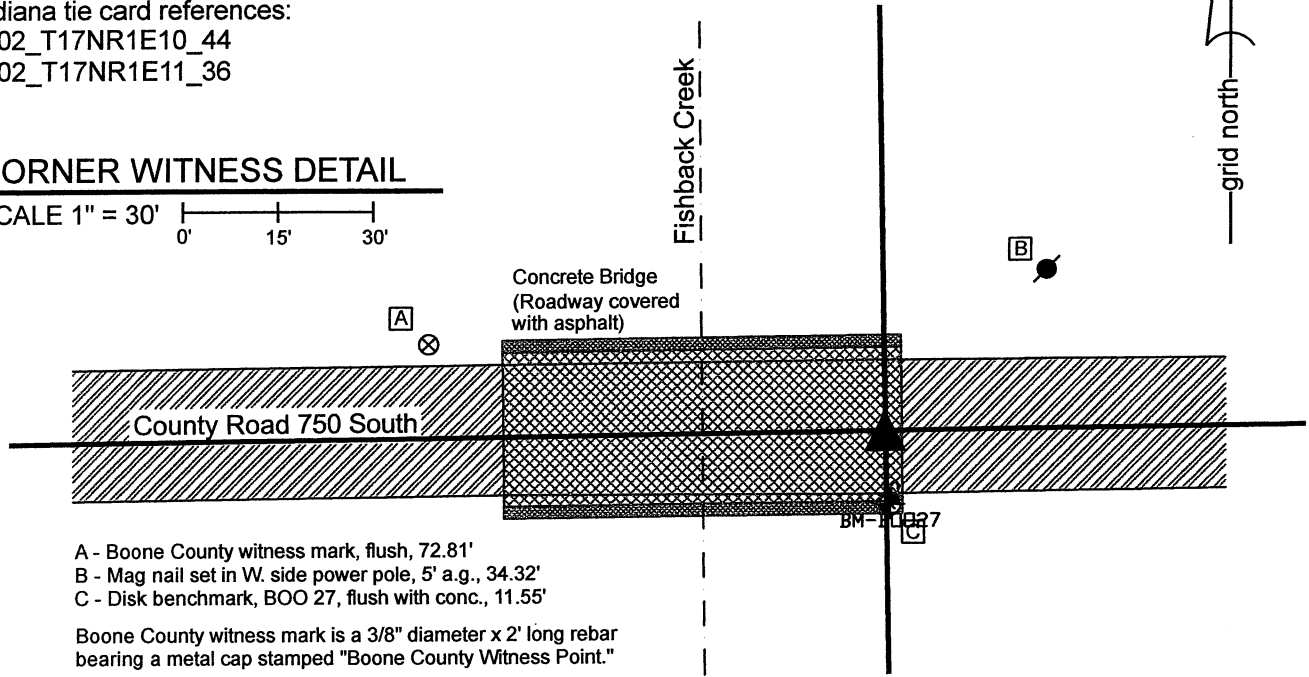
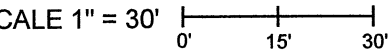
Indiana tie card references:

IN02\_T17NR1E10\_44

IN02\_T17NR1E11\_36

### CORNER WITNESS DETAIL

SCALE 1" = 30'



- A - Boone County witness mark, flush, 72.81'
- B - Mag nail set in W. side power pole, 5' a.g., 34.32'
- C - Disk benchmark, BOO 27, flush with conc., 11.55'

Boone County witness mark is a 3/8" diameter x 2' long rebar bearing a metal cap stamped "Boone County Witness Point."

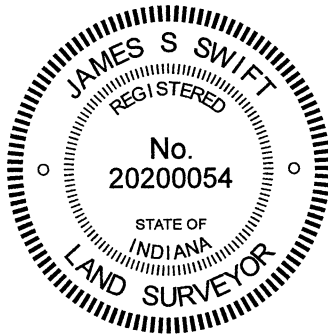
The Mag Spike was set in the position of the corner as previously monumented. A recent road resurfacing project removed the previous monument. The new monument, being a 3-inch Mag Spike with washer labeled 'Boone County Surveyor', was set in the newly paved road on November 9, 2021. The change in coordinates for the corner as depicted hereon represents the difference in the adjustment NAD83 (NSRS 2007) to NAD 83 (2011). It is noted that the road surface in this immediate vicinity is approximately 3 inches of asphalt overlaid on the concrete bridge deck.

The documentation for the previous establishment of the corner, March 1, 2012, referencing a rebar set at that time, is as follows:

The rebar was set in the calculated position of a stone set in 1899 and referenced to an old iron bridge.

A BCS record of March 6 & 10, 1899 states "Set rock 8x14x20 + (Nearest edge of S.E. post of Iron bridge = S 50° W, 11 feet). No modern BCS tie cards were found referencing this corner.

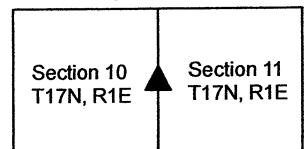
The iron bridge referenced in the 1899 record is no longer present, having been replaced by a concrete bridge in approximately 1960. Plans for the current bridge are on file in the Boone County Highway Department, called Pproject S-619 (1), fiscal year 1959. The plans show dimensions of the former bridge (called present structure on the plans) and show the location of the former bridge relative to the proposed bridge. The position of the existing bridge (proposed bridge on the plans) was located by its physical location in the field and select information shown on the plans was reconstructed relative to the existing bridge. A nail found driven through a bottle cap in an old wood post which is believed to represent Station 10+00, 26.5' Right on the plans, fit precisely with the reconstructed plans, indicating that the bridge was, in fact, built in the position shown on the plans. The former position of the old iron bridge was reconstructed relative to information on the plans. The position of the stone referenced in the 1899 record was established relative to the reconstructed position of the southeast post of the iron bridge. The bearing called for in the 1899 record was assumed to be geodetic, as no form of magnetic declination was stated. A grid to geodetic convergence angle of 0° 26' 35" was applied to the record bearing, as derived from the NGS on-line toolkit. Hence the corner was established at N49° 33' 25" E from the calculated position of the iron bridge, which results in a minimal adjustment of the position of the corner, well within the uncertainties of the reconstructed position of the iron bridge. General uncertainties of approximately 1 foot may be applied to the position of the corner as calculated.



*Kenneth E. Hedge*  
Kenneth E. Hedge, County Surveyor

*James S. Swift*  
James S. Swift, IN LS 20200054  
November 22, 2021 (revised from 3/1/2012)

Perry Township



# SECTION CORNER RECORD

# SE 750-500

## BOONE COUNTY SURVEYOR'S OFFICE

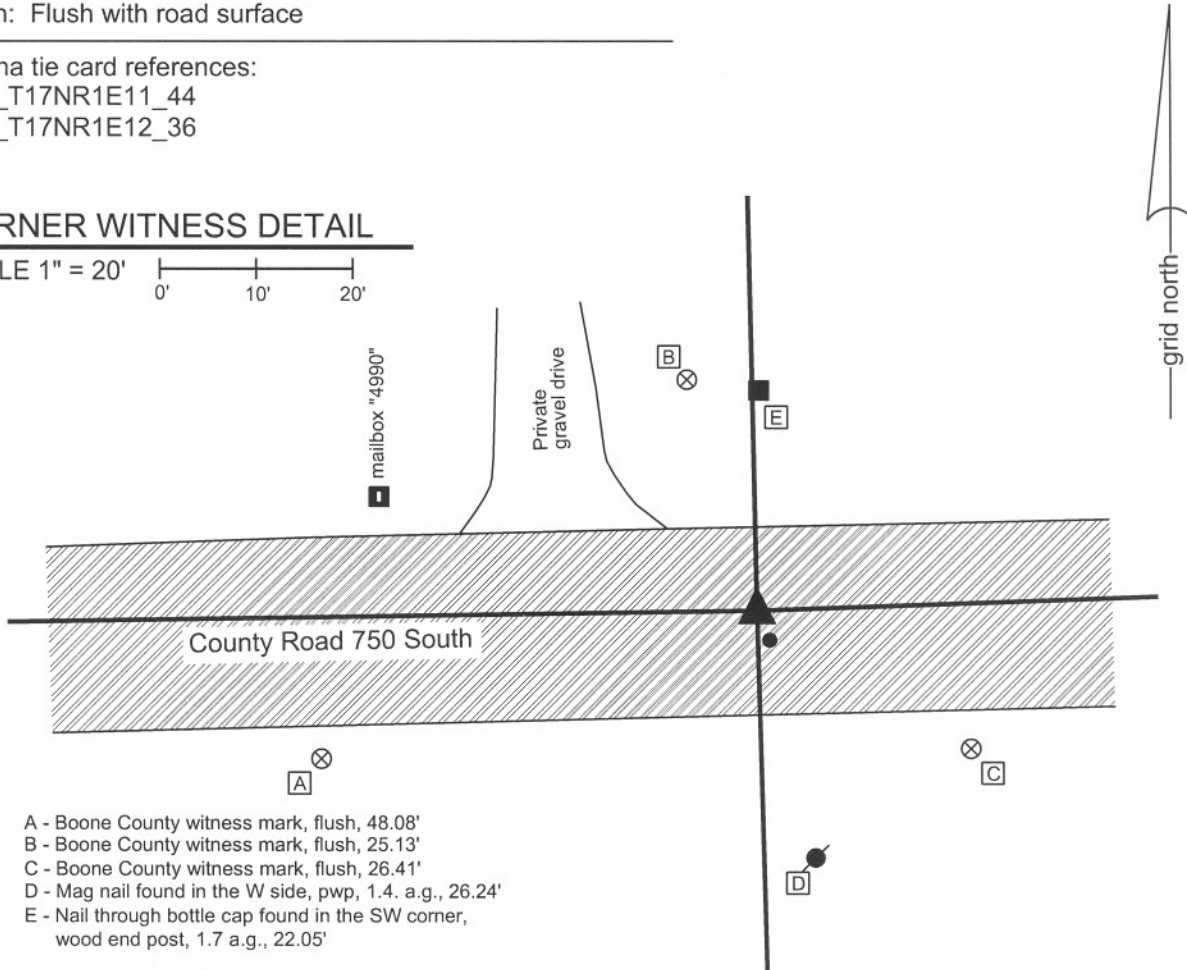
State Plane grid coordinates NAD83 (NSRS 2007):  
North: 1706382.96 East: 3151644.41 (U.S. survey feet)

Type of monument: Harrison, 4" disk 'Section Corner'  
Depth: Flush with road surface

Indiana tie card references:  
IN02\_T17NR1E11\_44  
IN02\_T17NR1E12\_36

### CORNER WITNESS DETAIL

SCALE 1" = 20'  
0' 10' 20'

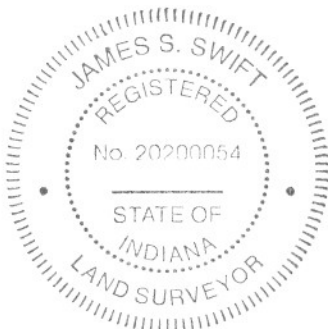


- A - Boone County witness mark, flush, 48.08'
- B - Boone County witness mark, flush, 25.13'
- C - Boone County witness mark, flush, 26.41'
- D - Mag nail found in the W side, pwp, 1.4. a.g., 26.24'
- E - Nail through bottle cap found in the SW corner, wood end post, 1.7 a.g., 22.05'

Boone County witness mark is a 3/8" diameter x 2' long rebar bearing a metal cap stamped "Boone County Witness Point."

Survey control mark is a 3/8" diameter x 2' long rebar bearing a red plastic cap stamped "Control Point."

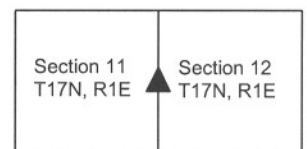
The Harrison monument was set over the approximate center of the top of a 11 inch by 18 inch (top dimensions) granite stone found and accepted as marking the corner. The top of the stone is 20 inches below the surface of the road. Boone County Surveyor Records dated June 28, 1864 call out this corner as "a stone that was set" with no dimensions stated for the stone. The found stone fits well with local evidence in the form of the existing roadway and fence to the north, as well as fitting with other evidence through the E-W center of Section 12, as found in 2007 and shown in the 1864 record. A 5/8" rebar of unknown origin was found, 1 inch below grade, 3.1' S and 1.3' E of the stone. The original corner was set in May, 1820.



*Kenneth E. Hedge*  
Kenneth E. Hedge, County Surveyor

*James S. Swift*  
James S. Swift, IN LS 20200054  
December 21, 2007

Perry Township





PHOTOGRAPHIC DOCUMENTATION

Date of photography: 9/07/2007

Photograph of found stone, taken from the south. The top of the stone is 11 inches by 18 inches and 20 inches below the surface of the road. The Harrison monument was set over the approximate center point of the top of the stone.



# SECTION CORNER RECORD

# SE 800-400

## BOONE COUNTY SURVEYOR'S OFFICE

State Plane grid coordinates NAD83 (2011):

Witness Rebar: North: 1703675.49 East: 3146380.85 (U.S. survey feet)

Section Corner: North: 1703665.99 East: 3146380.98 (U.S. survey feet)

Type of monument: 5/8" diameter rebar with cap stamped

'Boone County Surveyor', set as witness, on line, 9.5' north of corner

Depth: Three inches above surrounding ground

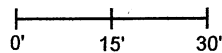
Indiana tie card references:

IN02\_T17NR1E11\_72 IN02\_T17NR1E10\_80

IN02\_T17NR1E15\_08 IN02\_T17NR1E14\_00

### CORNER WITNESS DETAIL

SCALE 1" = 30'

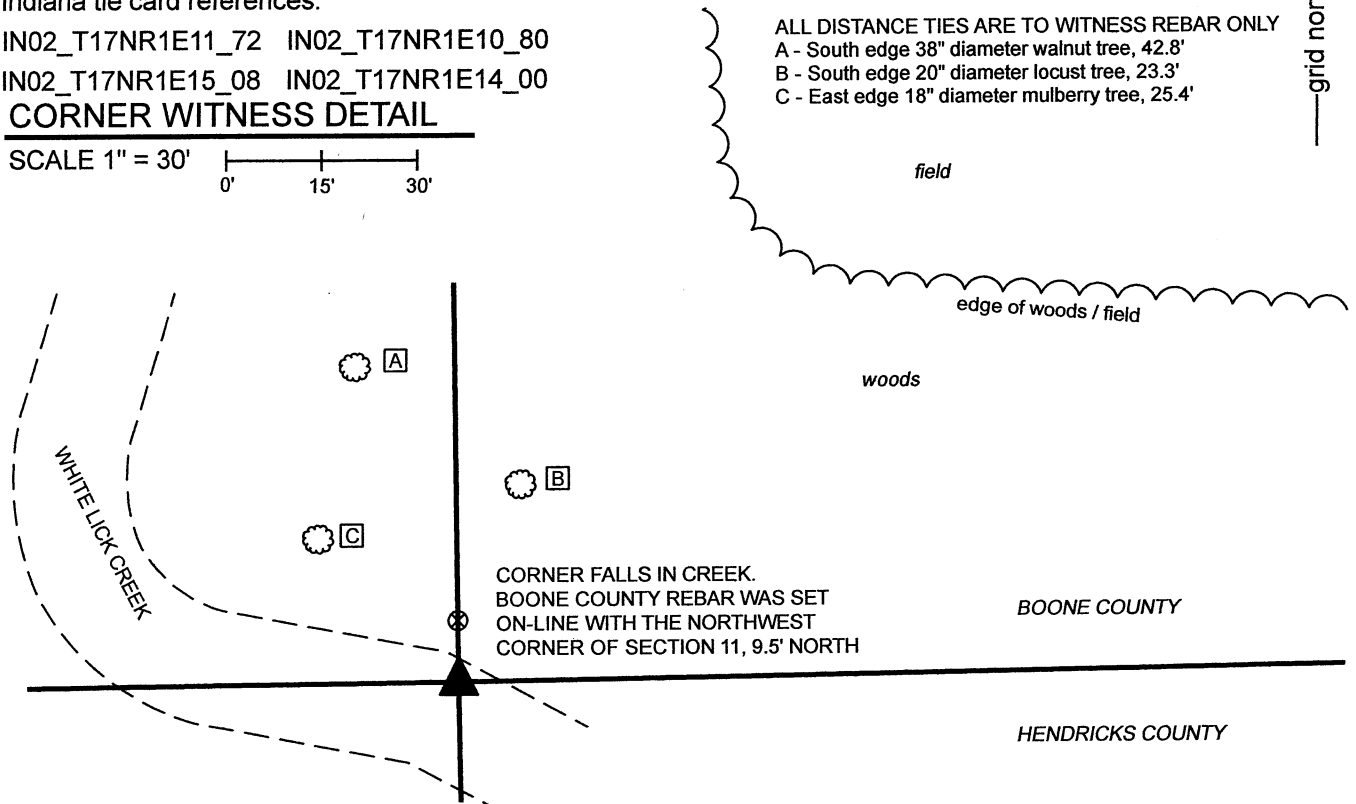
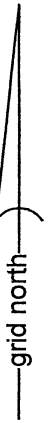


ALL DISTANCE TIES ARE TO WITNESS REBAR ONLY

A - South edge 38" diameter walnut tree, 42.8'

B - South edge 20" diameter locust tree, 23.3'

C - East edge 18" diameter mulberry tree, 25.4'



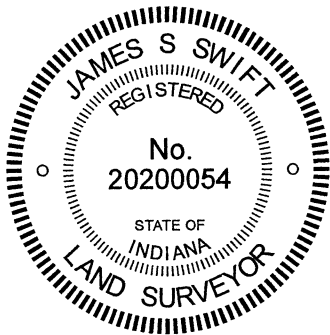
The witness rebar was set 9.5 feet north of a computed position of the corner.

No specific descriptions of this corner were found in the BCS Surveyor's Record beyond the original establishment of the corner as a wood post in 1820. Hendricks County records call for a stone of dimensions 8x10x12 inches marking the corner. Reconnaissance and excavation by the Hendricks County Surveyor's Office in December, 2017 did not yield reliable evidence of the corner.

This corner is shown as being a wood post on a survey by Jerry L. Carter, LS S0350, dated March 19, 2002 and recorded as Instrument 0208419 in the Office of the Boone County Recorder. This position was computed with respect to other monuments shown on the Carter survey and recovered in the field. The computed position of the post falls within the banks of White Lick Creek as it currently exists and the post was not found. The computed position for the post agrees precisely with a rebar found marking the southeast corner of the southwest quarter of Section 11, said rebar being at the midpoint of the line connecting the subject corner and south quarter corner of Section 11 (see BCS Corner SE 800-450), and said rebar being 2.4 feet east of a wood corner post marking historical occupation at said quarter-quarter corner.

Fragments of north-south fence were found in the vicinity of the section line north of the creek. These fence fragments generally agree with the position of the line as computed with respect to the Carter survey but no standing fence or strong evidence of an old fence on the ground was found and it appears that the fencing has been mostly removed from the area.

As the corner falls in the creek, a 36-inch length of 5/8-inch diameter rebar was set on the section line as a witness, 9.5 feet north of the corner.



*Kenneth E. Hedge*  
 Kenneth E. Hedge, County Surveyor

*James S. Swift*  
 James S. Swift, IN LS 20200054  
 November 23, 2021

Perry Township  
Boone County

Brown Township  
Hendricks County

Section 10 T17N, R1E	Section 11 T17N, R1E
Section 15 T17N, R1E	Section 14 T17N, R1E

# SECTION CORNER RECORD

SE 800-450

## BOONE COUNTY SURVEYOR'S OFFICE

State Plane grid coordinates NAD83 (2011):

North: 1703704.98 East: 3149043.41 (U.S. survey feet)

Type of monument: Harrison, 4" disk 'Section Corner'

Depth: Three inches below adjacent gravel drive surface

Indiana tie card references:

IN02\_T17NR1E11\_76 IN02\_T17NR1E14\_04

### CORNER WITNESS DETAIL

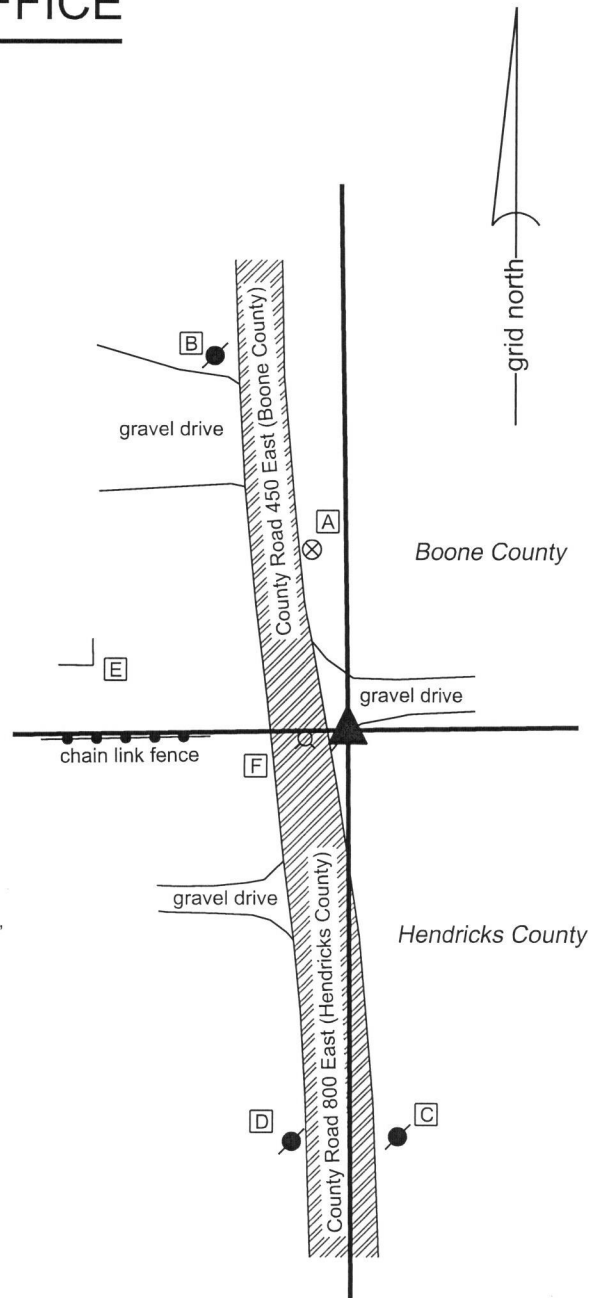
SCALE 1" = 60'

The Harrison monument was set in the position of a 5/8" inch rebar. A BC record of August 6-7, 1895 states, with respect to this corner, "Rock 10x12x8 marked +" and also contains references to a witness tree and a witness stone. No recent BCS tie cards were found referencing this corner. This corner was investigated by this office in April, 2008. At that time, a 5/8 inch rebar with a red plastic cap (markings not intelligible) was found at the approximate intersection of the northerly prolongation of the center of Hendricks County Road 800 East and the easterly prolongation of a chain link fence on the west side of the road. No excavation was performed at that time. Metal detection indicated that no other monuments were present. The position of the rebar was determined with RTK GPS in April, 2008 and redundant positions were observed on the rebar in August, 2008 and March, 2009. All three observations yielded positions which agreed with minimal uncertainty. In May, 2013, the Hendricks County Surveyor's Office excavated a 5x5 foot square centered on the rebar, in search of additional evidence. Although the HCSO had detailed, ancient records of the presence of a stone and witnesses, no stones were found in the search area and the rebar was left in place, accepted as the best available evidence of the corner. The IN SPC West Zone coordinates noted for the rebar by HCSO matched closely with the repeated observations by this office (BCSO). The HCSO revisited the corner in June, 2018 and noted "found rebar destroyed."

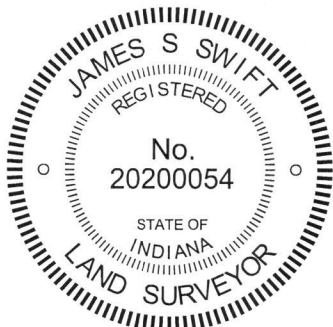
This corner was revisited by BCSO in March, 2019. The apparent same rebar was found, red cap with illegible markings being of same evident age and appearance, in the vicinity of the corner. However, the rebar was found 2.4 feet south and 2.6 feet east of the position previously and repeatedly observed. The HCSO was contacted and they confirmed that they did not move the rebar, but had no better evidence of the corner. Accepting the 2013 excavation by HCSO as substantial and sufficient, the former position of the rebar was accepted as the best available evidence of the corner. Holding local control monuments which were set coincident with the March, 2009 observation of the rebar, the position of the rebar was reestablished and a Harrison monument was set at that position on March 12, 2019. Slight variations in State Plane Coordinates were noted between the 2008-2009 observations and coordinates published in 2019, due to the shift associated with the adjustment from NAD83 (NSRS 2007) to NAD83 (2011). The rebar was left in place, south and east of the Harrison monument. A survey recorded in Survey Book 19, page 26 in the Office of the Boone County Recorder appears to hold the rebar in the altered position as the corner. This survey was performed in 2016 but recorded on March 18, 2019, six days after the Harrison monument was set. No other recorded surveys were found referencing this corner.

It is noted that the rebar is near the south edge of a residential driveway. During installation of the monument, reasonably new gravel material was observed for the driveway from the surface to several inches down, indicating significant grading and a possible reason for the displacement of the rebar. It is also noted that the driveway material (new and old) is approximately 18 inches thick.

This corner was originally established as a wood post in 1820.



- A - Boone County witness mark, flush, 57.3'
- B - Mag nail set in S. side power pole, 2' a.g., 123.7'
- C - Mag nail set in N. side power pole, 2' a.g., 127.6'
- D - Mag nail set in N. side power pole, 2' a.g., 129.2'
- E - S.E. Corner of house foundation, 6" a.g., 81.6'
- F - Mag nail found, flush with road surface, 13.7'



*Kenneth E. Hedge*  
 Kenneth E. Hedge, County Surveyor

*James S. Swift*  
 James S. Swift, IN LS 20200054  
 April 10, 2019

Perry Township  
 Boone County

Section 11  
 T17N, R1E

Brown Township  
 Hendricks County

Section 14  
 T17N, R1E

# SECTION CORNER RECORD

SE 800-500

## BOONE COUNTY SURVEYOR'S OFFICE

State Plane grid coordinates NAD83 (2011):

North: 1703737.85 East: 3151716.16 (U.S. survey feet)

Type of monument: stone with etched X mark

Depth: flush with adjacent ground

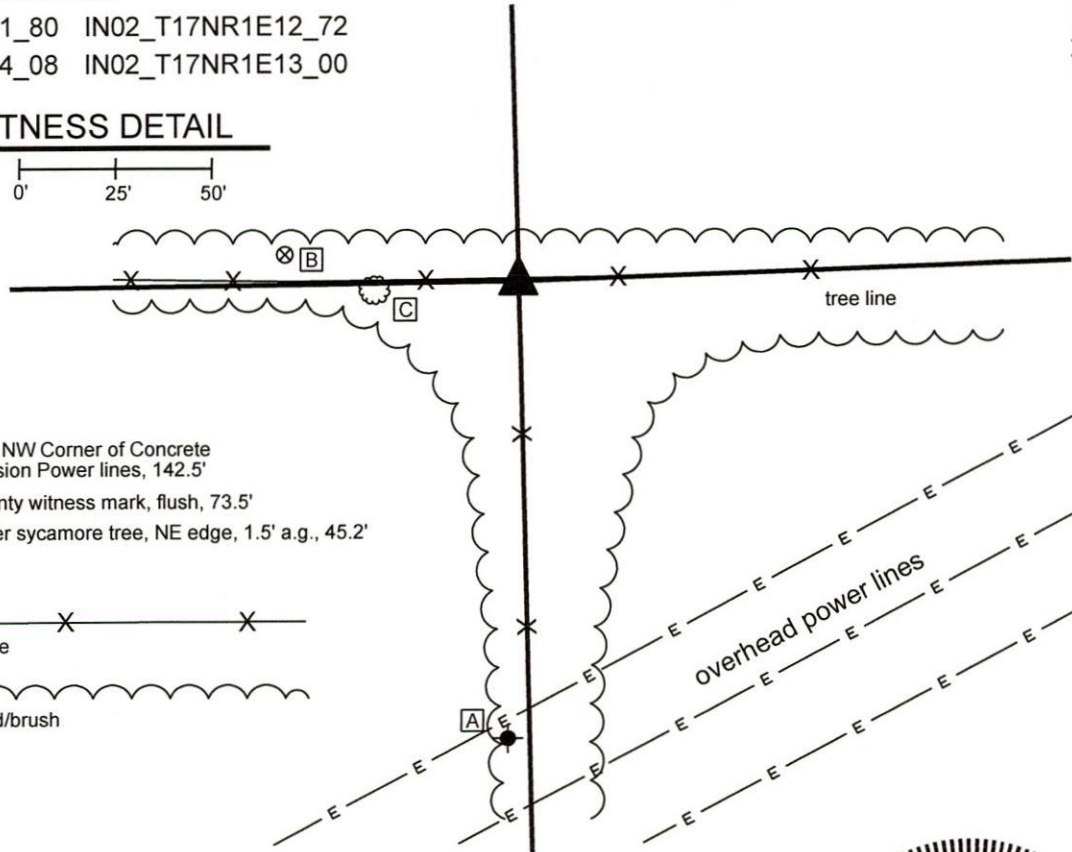
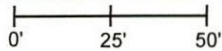
Indiana tie card references:

IN02\_T17NR1E11\_80 IN02\_T17NR1E12\_72

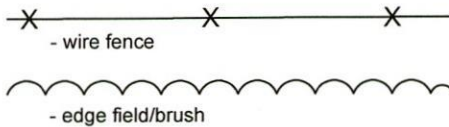
IN02\_T17NR1E14\_08 IN02\_T17NR1E13\_00

### CORNER WITNESS DETAIL

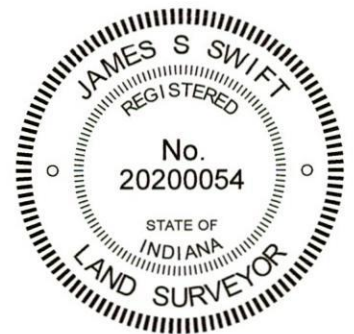
SCALE 1" = 50'



- A - X carved in NW Corner of Concrete pad Hi-Tension Power lines, 142.5'
- B - Boone County witness mark, flush, 73.5'
- C - 25" diameter sycamore tree, NE edge, 1.5' a.g., 45.2'



The stone was found in place and held as marking the corner. No specific descriptions of this corner were found in the BCS Surveyor's Record beyond the original establishment of the corner as a wood post in 1820. A Hendricks County tie card dated March 11, 2004 and confirmed by field notes dated January 4, 2018 shows the corner as being marked by a stone 4 inches by 10 inches on top with an X cut in the top. This stone was found flush with the surface of the ground at the southwest edge of a wood corner post. The mark on the top of the stone is a deeply etched X mark ground by a drill driven grinder, typical of marks recently established on stones by the Hendricks County Surveyor's Office. The stone was accepted as the best available evidence of the corner and held as marking the corner.



*Kenneth E. Hedge*  
Kenneth E. Hedge, County Surveyor

*James S. Swift*  
James S. Swift, IN LS 20200054

March 17, 2020

Perry Township  
Boone County

Section 11 T17N, R1E	Section 12 T17N, R1E
Section 14 T17N, R1E	Section 13 T17N, R1E

Brown Township  
Hendricks County