

SECTION CORNER RECORD

SE 700-300

BOONE COUNTY SURVEYOR'S OFFICE

State Plane grid coordinates NAD83 (NSRS 2007):

North: 1708925.87 East: 3140924.57 (U.S. survey feet)

Type of monument: Harrison, 4" disk 'Section Corner'

Depth: One inch below adjacent road surface

Indiana tie card references:

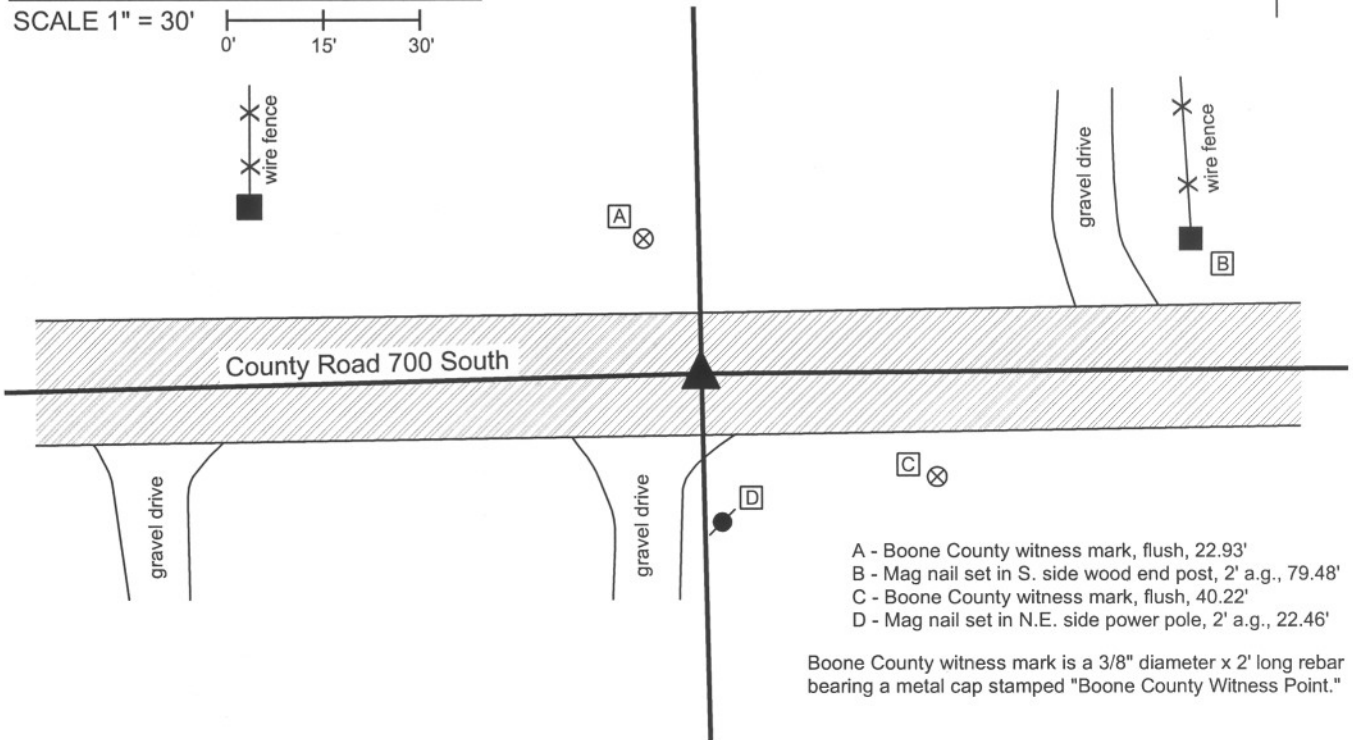
IN02_T17NR1E03_72 IN02_T17NR1E04_80

IN02_T17NR1E09_08 IN02_T17NR1E10_00



CORNER WITNESS DETAIL

SCALE 1" = 30'
0' 15' 30'



The harrison monument was set over the top of a stone found.

A BCS record of March 19, 1872 states "Found from roots of Beech. Drove no stake." A BCS record of March 29, 1898 states "Set rock. 7x13x24 +. Two small rocks beneath." No BCS tie cards were found for this corner. Excavation occurred on November 19, 2008. Prior to excavation, a 1/2 inch rebar was visible at the surface. An area approximately 3 feet N-S by 9 feet E-W appeared to have been excavated previously. The rebar was at the west edge of that area. Excavation revealed a wood hub at 5 inches deep approximately 1.5 feet west of the rebar. Excavation also revealed the record stone found at 21 inches deep. The stone is fully embedded in the clay layer beneath the road and measures 7 inches N-S by 13 inches E-W by 24 inches vertical. One small rock was exposed underneath the rock at the east edge of the record stone. The harrison monument was set directly over the top, high point of the record stone, which point is approximately 4 inches west of the east edge of the stone. The harrison monument is 1.3 feet South and 2.2 feet west of the position of the 1/2 inch rebar, which was removed during excavation.

This corner was originally established as a wood post in June, 1820.



Kenneth E. Hedge
Kenneth E. Hedge, County Surveyor

James S. Swift

James S. Swift, IN LS 20200054

March 11, 2009 revised July 14, 2010

Perry Township

Section 4 T17N, R1E	Section 3 T17N, R1E
Section 9 T17N, R1E	Section 10 T17N, R1E

PHOTOGRAPHIC DOCUMENTATION

Date of photography: November 19, 2008

Corner stone.
View from east with stone partially exposed.



Corner stone. View from east of fully exposed stone and County Road 700 South to the west.



Corner stone. View from above.



For details and documentation, refer to related sheet "Section Corner Record."

SECTION CORNER RECORD

SE 700-350

BOONE COUNTY SURVEYOR'S OFFICE

State Plane grid coordinates NAD83 (NSRS 2007):
North: 1708946.06 East: 3143583.11 (U.S. survey feet)

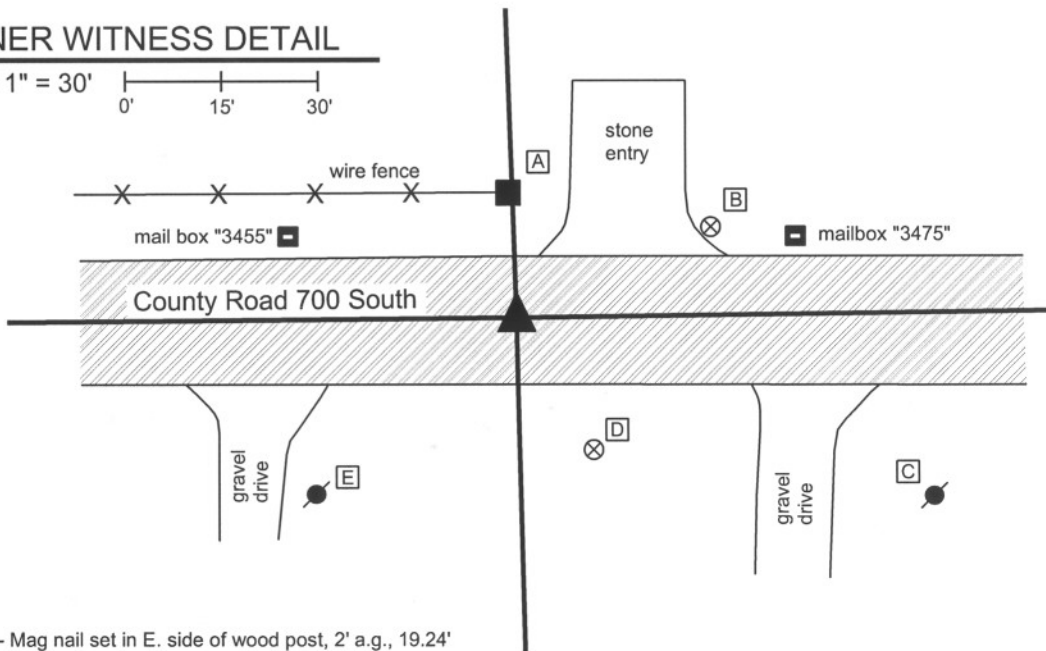
Type of monument: Harrison, 4" disk 'Section Corner'
Depth: One inch below adjacent road surface

Indiana tie card references:
IN02_T17NR1E03_76
IN02_T17NR1E10_04



CORNER WITNESS DETAIL

SCALE 1" = 30'



- A - Mag nail set in E. side of wood post, 2' a.g., 19.24'
- B - Boone County witness mark, flush 33.75'
- C - Mag nail set in N.W. side power pole, 2' a.g., 69.78'
- D - Boone County Witness Mark, flush, 23.80'
- E - Mag nail set in N.E. side, power pole, 2' a.g., 40.23'

Boone County witness mark is a 3/8" diameter x 2' long rebar bearing a metal cap stamped "Boone County Witness Point."

The harrison monument was set in place of a railroad rail found. A BCS record of March 29, 1898 states "Set Rock. 12x18x18. Three small rocks beneath." A BCS tie card of February 15, 1968 shows a triangle at the corner with no further information. However, the field notes associated with that tie card state "stone located by G. Jones, Feb 15, 1968. RR rail set by Harold." This corner was excavated on November 19, 2008. Prior to excavation, a railroad rail was visible at 9 inches deep in a hole in the asphalt. Excavation revealed no further monuments. It is likely that the stone was removed and the railroad rail set in its place, as was a common practice by field crews from this office in that time frame. The harrison monument was set in place of the railroad rail, which was removed during excavation. This corner was originally established as a wood post in June, 1820.



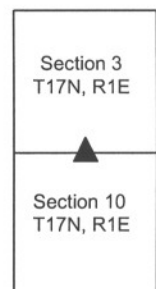
Kenneth E. Hedge
Kenneth E. Hedge, County Surveyor

James S. Swift

James S. Swift, IN LS 20200054

March 11, 2009 Revised July 14, 2010

Perry Township



SECTION CORNER RECORD

SE 700-400

BOONE COUNTY SURVEYOR'S OFFICE

State Plane grid coordinates NAD83 (NSRS 2007):
North: 1708980.17 East: 3146305.02 (U.S. survey feet)

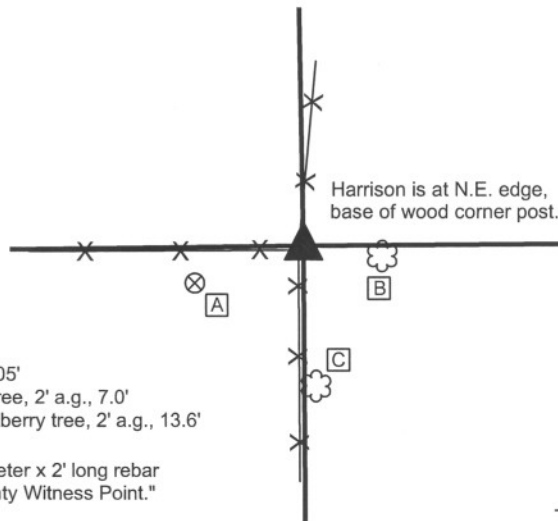
Type of monument: Harrison, 4" disk 'Section Corner'
Depth: Flush with adjoining grade

Indiana tie card references:
IN02_T17NR1E02_72 IN02_T17NR1E03_80
IN02_T17NR1E10_08 IN02_T17NR1E11_00



CORNER WITNESS DETAIL

SCALE 1" = 20'
0' 10' 20'

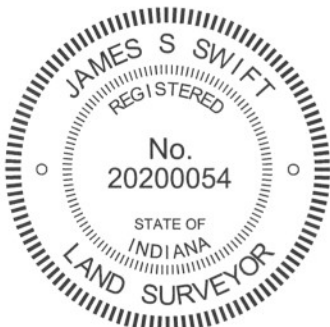


- A - Boone County witness mark, flush, 12.05'
- B - Mag nail set in W. side, 8 inch walnut tree, 2' a.g., 7.0'
- C - Mag nail set in N.W. side, 12 inch hackberry tree, 2' a.g., 13.6'

Boone County witness mark is a 3/8" diameter x 2' long rebar bearing a metal cap stamped "Boone County Witness Point."

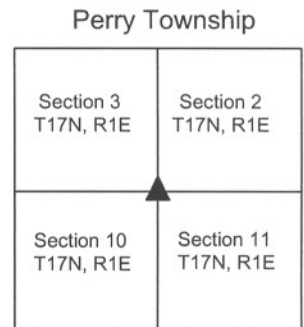
X X X
- denotes wire fence

The harrison monument was set in place of three stones found stacked on top of each other. This corner is not specifically identified the old BCS stone records. It is referenced in measurement records within the BCS stone record with references in 1836, 1866 and 1894. No BCS tie cards were found for this corner. The stones found are at the east edge of the old wood corner post at the intersection of fences to the north, south and west. The top stone is generally of a square shape and was found oriented in cardinal directions. The top of the stone was slightly below the surface of the ground, being at the level of the roots of the grass. The second stone was directly beneath the top stone and the third stone was found directly below the second. The stones did not appear to have the characteristics of brace rocks and did appear to have been intentionally set in a column. The stones were all removed and the harrison monument was set in their place. This corner was originally established as a wood post in June, 1820.



Kenneth E. Hedge
Kenneth E. Hedge, County Surveyor

James S. Swift
James S. Swift, IN LS 20200054
February 27, 2009 Revised July 25, 2011



SECTION CORNER RECORD

SE 750-300

BOONE COUNTY SURVEYOR'S OFFICE

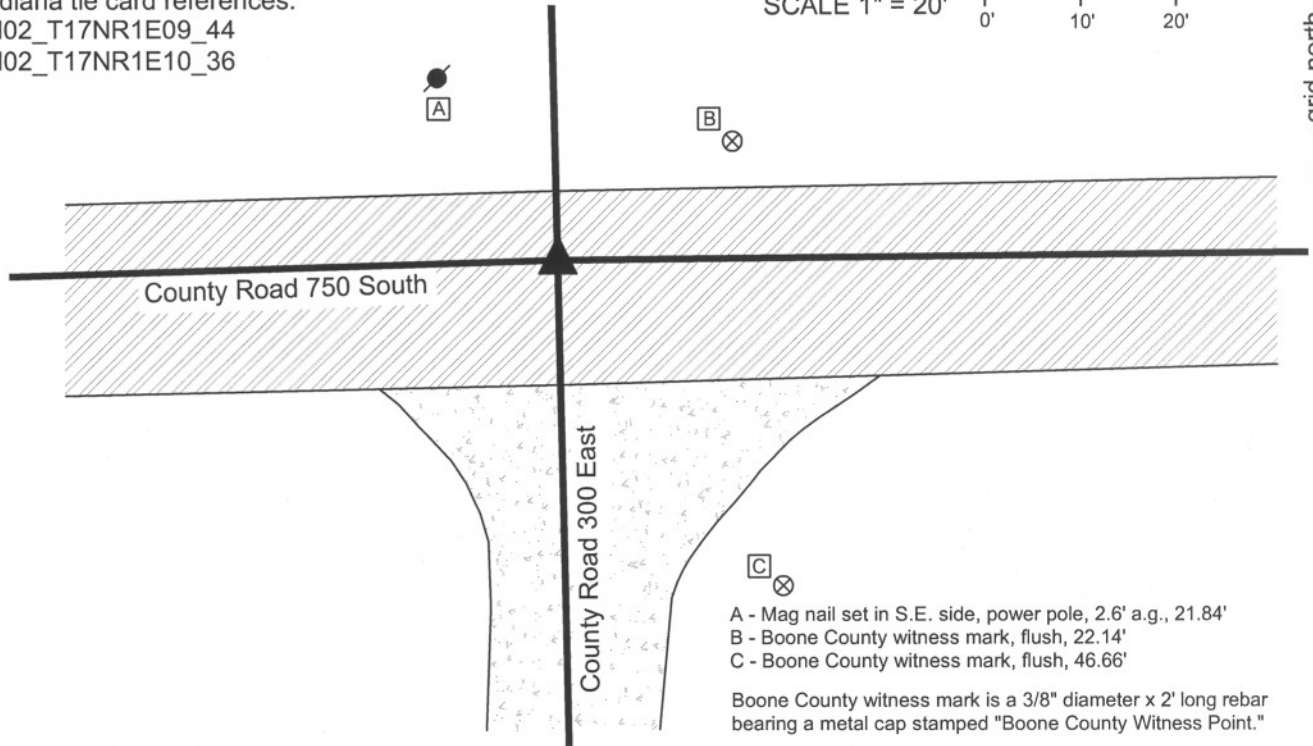
State Plane grid coordinates NAD83 (NSRS 2007):
North: 1706272.64 East: 3140984.74 (U.S. survey feet)

Type of monument: Harrison, 4" disk 'Section Corner'
Depth: One inch below adjacent road surface

Indiana tie card references:
IN02_T17NR1E09_44
IN02_T17NR1E10_36

CORNER WITNESS DETAIL

SCALE 1" = 20' 0' 10' 20'



- A - Mag nail set in S.E. side, power pole, 2.6' a.g., 21.84'
- B - Boone County witness mark, flush, 22.14'
- C - Boone County witness mark, flush, 46.66'

Boone County witness mark is a 3/8" diameter x 2' long rebar bearing a metal cap stamped "Boone County Witness Point."

The Harrison monument was set over a stone found. A BCS record of March 19, 1872 states "Reestablished from stump. Set two Rocks. One 16,11,8 +. Top one 16,10,7 +." A BCS tie card of February, 1968 shows the corner but does not contain further information. The field notes associated with this tie card show the same sketch and also state "no stone, Ken and Harold, February 1968." This corner was excavated on November 20, 2008. Prior to excavation, a mag nail in a washer was visible at the surface. Excavation revealed a railroad rail below the nail at 7 inches deep. Excavation also revealed a wood hub found with a railroad spike driven into the top of it at 6 inches deep, 0.65 foot south and 1.0 foot east of the rail. A stone was found below the hub and spike at 14 inches deep. The stone measures 13x10x9 inches, set vertically but mostly in fill material with only the bottom partially in the clay layer. Another stone was found at 16 inches deep, approximately 2.8 feet north of the first stone. The second stone is too large for either of the record stones and was oriented rather haphazardly. This stone was removed and below it was found another stone, completely embedded in the clay. The dimensions of this somewhat rough stone are difficult to precisely determine, but are approximately the dimensions on the record lower stone from 1872, being 16 by 11 by 8 inches. The stone is set horizontally with the longest part oriented E-W. This fits with the pattern from that period wherein the top stone was set vertically and the lower stone was set horizontally. The stone was accepted as being the record lower stone as described in the record of March 19, 1872. It is also noted that the top of the clay layer was at approximately 9 inches above the top of the stone. If the upper record stone was set vertically, it would have protruded at least 7 inches into the current layer of fill material. The cross section of the road in this intersection consists of asphalt on top, over a sandy fill material which is over a rocky fill material. The rocky material appears to be specifically intended as fill, rather than just the old sandy, gravelly base material of the wagon road, as its typically found above the clay layer in similar county roads. It is likely that the upper record stone was removed during the installation of the fill material. The Harrison monument is 2.1 feet North and 0.5 foot East of the position of the mag nail and railroad rail, both of which were removed during excavation. This corner was originally established as a wood post in June, 1820.

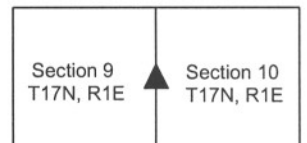


Kenneth E. Hedge
Kenneth E. Hedge, County Surveyor

James S. Swift
James S. Swift, IN LS 20200054

March 11, 2009 Revised July 14, 2010

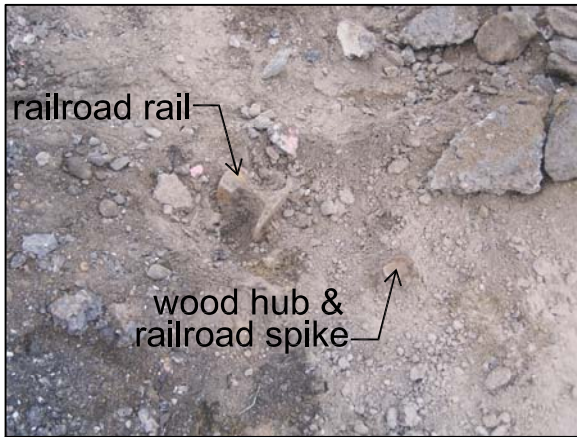
Perry Township



PHOTOGRAPHIC DOCUMENTATION

Date of photography: November 20, 2008

Railroad rail and wood hub with railroad spike driven into it.



Non-record stone found entirely within fill material. Overhead view from west.



Non-record stone found mostly in fill material with bottom at clay layer. View from south.



Record bottom stone found, embedded in clay. View from south.



For details and documentation, refer to related sheet "Section Corner Record."

SECTION CORNER RECORD

SE 750-400

BOONE COUNTY SURVEYOR'S OFFICE

State Plane grid coordinates NAD83 (NSRS 2007):

North: 1706328.32 East: 3146344.73 (U.S. survey feet)

Type of monument: 5/8 inch rebar with aluminum cap stamped 'Boone County Surveyor.'

Depth: One inch below adjacent road surface

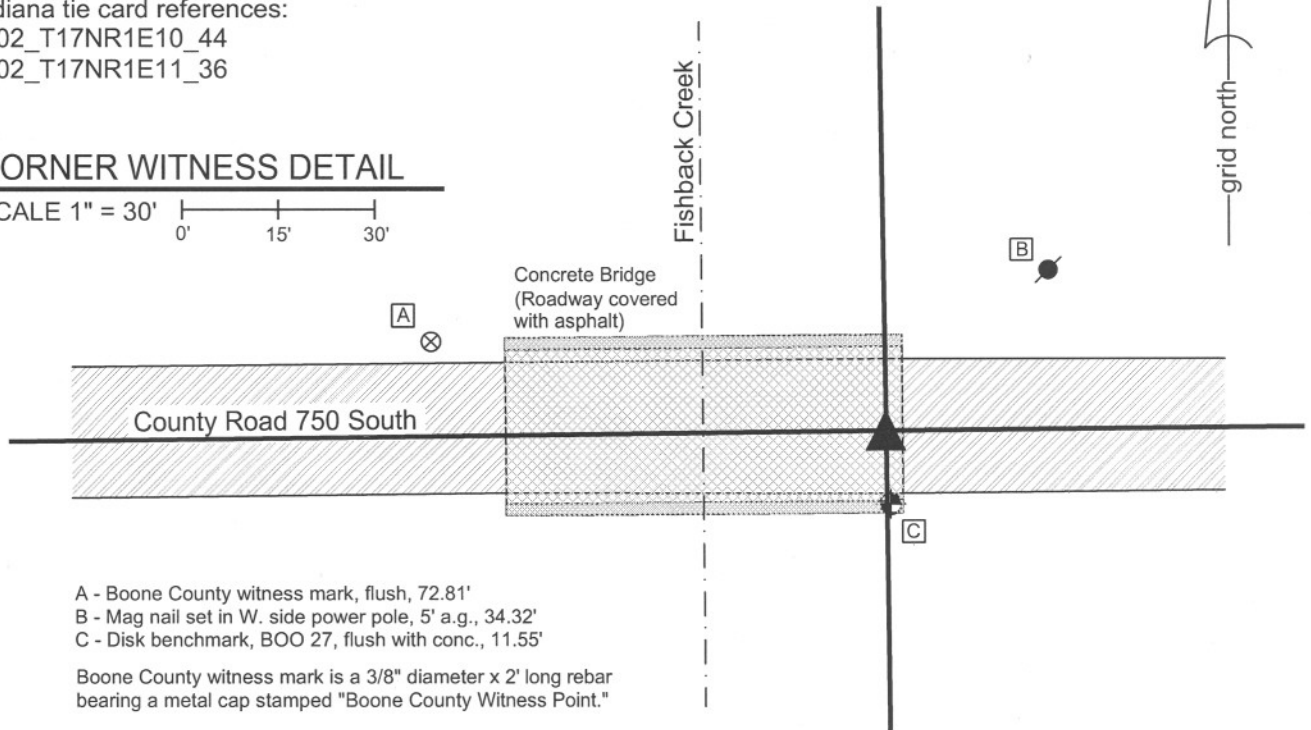
Indiana tie card references:

IN02_T17NR1E10_44

IN02_T17NR1E11_36

CORNER WITNESS DETAIL

SCALE 1" = 30'



- A - Boone County witness mark, flush, 72.81'
- B - Mag nail set in W. side power pole, 5' a.g., 34.32'
- C - Disk benchmark, BOO 27, flush with conc., 11.55'

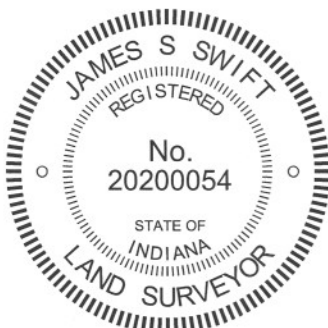
Boone County witness mark is a 3/8" diameter x 2' long rebar bearing a metal cap stamped "Boone County Witness Point."

The rebar was set in the calculated position of a stone set in 1899 and referenced to an old iron bridge.

A BCS record of March 6 & 10, 1899 states "Set rock 8x14x20 + (Nearest edge of S.E. post of Iron bridge = S 50° W, 11 feet). No modern BCS tie cards were found referencing this corner.

The iron bridge referenced in the 1899 record is no longer present, having been replaced by a concrete bridge in approximately 1960. Plans for the current bridge are on file in the Boone County Highway Department, called Pjobject S-619 (1), fiscal year 1959. The plans show dimensions of the former bridge (called present structure on the plans) and show the location of the former bridge relative to the proposed bridge. The position of the existing bridge (proposed bridge on the plans) was located by its physical location in the field and select information shown on the plans was reconstructed relative to the existing bridge. A nail found driven through a bottle cap in an old wood post which is believed to represent Station 10+00, 26.5' Right on the plans, fit precisely with the reconstructed plans, indicating that the bridge was, in fact, built in the position shown on the plans. The former position of the old iron bridge was reconstructed relative to information on the plans. The position of the stone referenced in the 1899 record was established relative to the reconstructed position of the southeast post of the iron bridge. The bearing called for in the 1899 record was assumed to be geodetic, as no form of magnetic declination was stated. A grid to geodetic convergence angle of 0° 26' 35" was applied to the record bearing, as derived from the NGS on-line toolkit. Hence the corner was established at N49° 33' 25" E from the calculated position of the iron bridge, which results in a minimal adjustment of the position of the corner, well within the uncertainties of the reconstructed position of the iron bridge. General uncertainties of approximately 1 foot may be applied to the position of the corner as calculated.

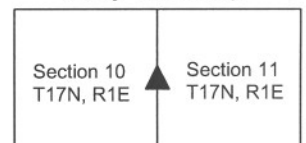
The corner falls on the deck of the bridge, which is made of concrete with a thin layer of asphalt over the top. An aluminum cap stamped 'Boone County Surveyor' was placed on a section of 5/8 inch diameter rebar measuring approximately 2.5 inches. The rebar and the cap were attached to the concrete and asphalt with epoxy in the calculated position of the corner.



Kenneth E. Hedge
Kenneth E. Hedge, County Surveyor

James S. Swift
James S. Swift, IN LS 20200054
March 1, 2012

Perry Township



SECTION CORNER RECORD

SE 750-400

BOONE COUNTY SURVEYOR'S OFFICE

State Plane grid coordinates NAD83 (2011):

North: 1706328.32 East: 3146344.81 (U.S. survey feet)

Type of monument: Mag Spike set with washer 'Boone County Surveyor.'

Depth: Flush with adjacent road surface

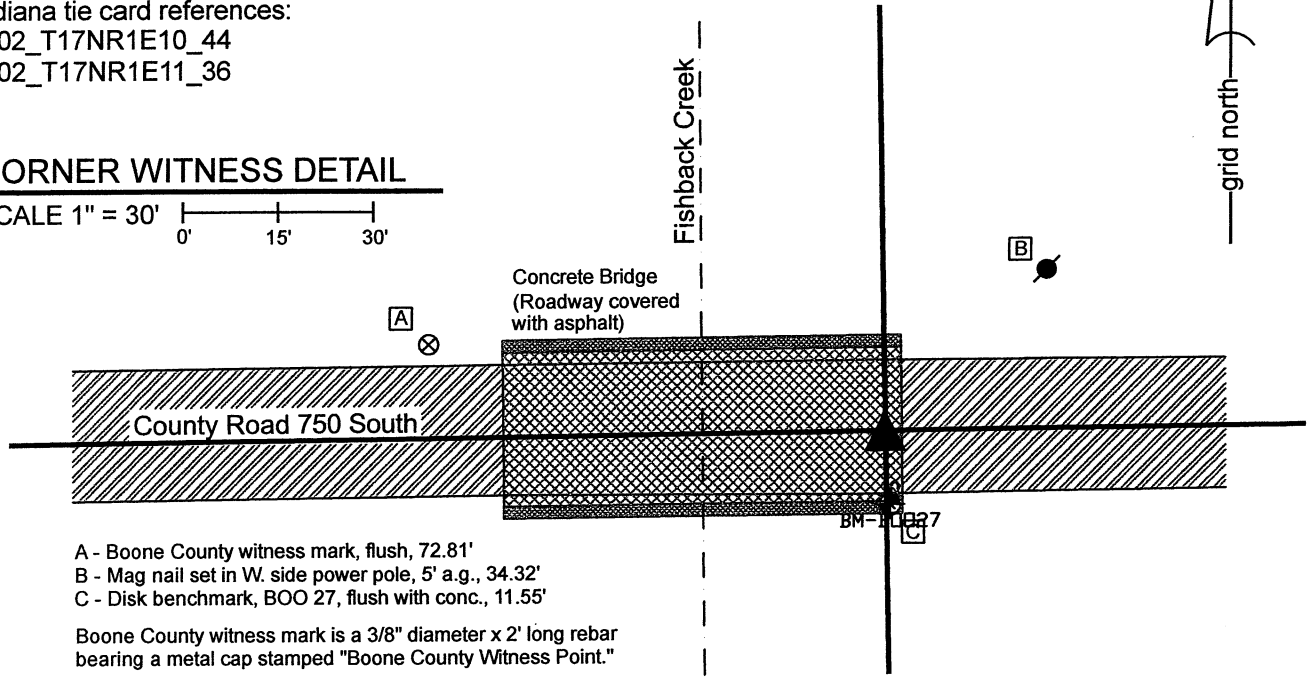
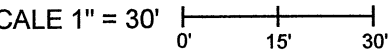
Indiana tie card references:

IN02_T17NR1E10_44

IN02_T17NR1E11_36

CORNER WITNESS DETAIL

SCALE 1" = 30'



- A - Boone County witness mark, flush, 72.81'
- B - Mag nail set in W. side power pole, 5' a.g., 34.32'
- C - Disk benchmark, BOO 27, flush with conc., 11.55'

Boone County witness mark is a 3/8" diameter x 2' long rebar bearing a metal cap stamped "Boone County Witness Point."

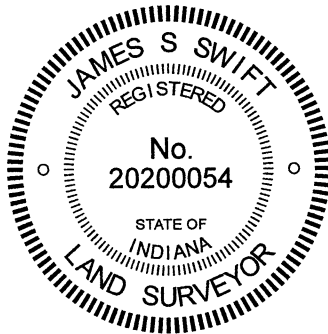
The Mag Spike was set in the position of the corner as previously monumented. A recent road resurfacing project removed the previous monument. The new monument, being a 3-inch Mag Spike with washer labeled 'Boone County Surveyor', was set in the newly paved road on November 9, 2021. The change in coordinates for the corner as depicted hereon represents the difference in the adjustment NAD83 (NSRS 2007) to NAD 83 (2011). It is noted that the road surface in this immediate vicinity is approximately 3 inches of asphalt overlaid on the concrete bridge deck.

The documentation for the previous establishment of the corner, March 1, 2012, referencing a rebar set at that time, is as follows:

The rebar was set in the calculated position of a stone set in 1899 and referenced to an old iron bridge.

A BCS record of March 6 & 10, 1899 states "Set rock 8x14x20 + (Nearest edge of S.E. post of Iron bridge = S 50° W, 11 feet). No modern BCS tie cards were found referencing this corner.

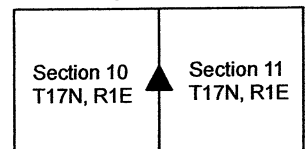
The iron bridge referenced in the 1899 record is no longer present, having been replaced by a concrete bridge in approximately 1960. Plans for the current bridge are on file in the Boone County Highway Department, called Pproject S-619 (1), fiscal year 1959. The plans show dimensions of the former bridge (called present structure on the plans) and show the location of the former bridge relative to the proposed bridge. The position of the existing bridge (proposed bridge on the plans) was located by its physical location in the field and select information shown on the plans was reconstructed relative to the existing bridge. A nail found driven through a bottle cap in an old wood post which is believed to represent Station 10+00, 26.5' Right on the plans, fit precisely with the reconstructed plans, indicating that the bridge was, in fact, built in the position shown on the plans. The former position of the old iron bridge was reconstructed relative to information on the plans. The position of the stone referenced in the 1899 record was established relative to the reconstructed position of the southeast post of the iron bridge. The bearing called for in the 1899 record was assumed to be geodetic, as no form of magnetic declination was stated. A grid to geodetic convergence angle of 0° 26' 35" was applied to the record bearing, as derived from the NGS on-line toolkit. Hence the corner was established at N49° 33' 25" E from the calculated position of the iron bridge, which results in a minimal adjustment of the position of the corner, well within the uncertainties of the reconstructed position of the iron bridge. General uncertainties of approximately 1 foot may be applied to the position of the corner as calculated.



Kenneth E. Hedge
Kenneth E. Hedge, County Surveyor

James S. Swift
James S. Swift, IN LS 20200054
November 22, 2021 (revised from 3/1/2012)

Perry Township



SECTION CORNER RECORD

SE 800-300

BOONE COUNTY SURVEYOR'S OFFICE

State Plane grid coordinates NAD83 (2011):
North: 1703616.42 East: 3141041.51 (U.S. survey feet)

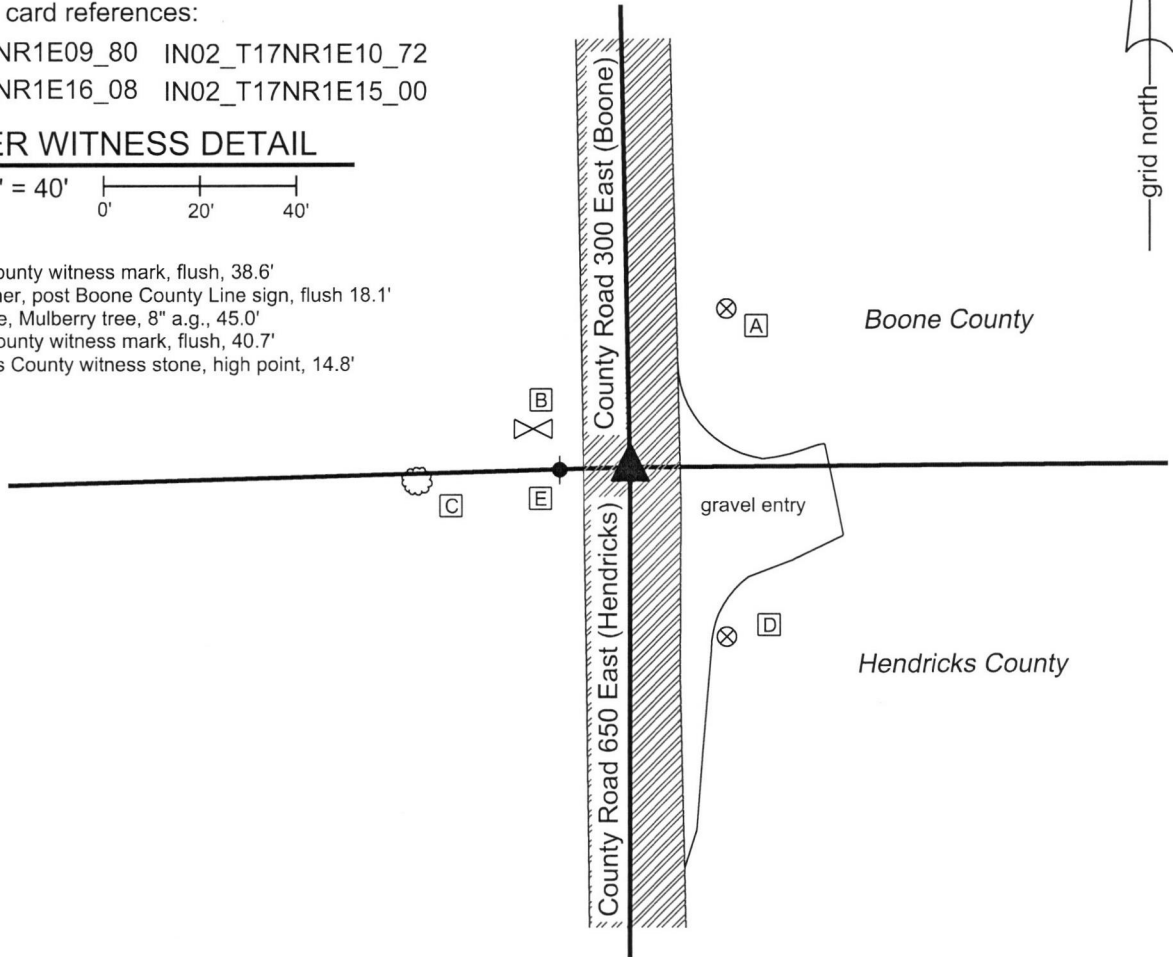
Type of monument: Harrison, 4" disk 'Section Corner'
Depth: 1/2 inch below adjacent road surface

Indiana tie card references:
IN02_T17NR1E09_80 IN02_T17NR1E10_72
IN02_T17NR1E16_08 IN02_T17NR1E15_00

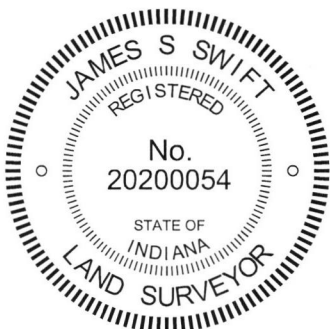
CORNER WITNESS DETAIL

SCALE 1" = 40'
0' 20' 40'

- A - Boone County witness mark, flush, 38.6'
- B - S.E. Corner, post Boone County Line sign, flush 18.1'
- C - East edge, Mulberry tree, 8" a.g., 45.0'
- D - Boone County witness mark, flush, 40.7'
- E - Hendricks County witness stone, high point, 14.8'



The Harrison monument was set over a stone found. No specific descriptions of this corner were found in the BCS Surveyor's Record beyond the original establishment of the corner as a wood post in 1820. No BCS tie cards were found referencing this corner. A Hendricks County tie card dated March 23, 2007 shows the corner as an 8"x16"x18" stone with cut "x" on top. Hendricks County field notes dated October 10, 2017 affirm this tie card. Both tie cards state that a rebar with disk was set over the stone. This corner was excavated by the Boone County Surveyor's Office on August 28, 2019 in preparation for a road paving project. Prior to excavation, a rebar with Hendricks County cap was found at the surface of the road. Excavation revealed the stone described on the Hendricks County tie cards at 17 inches deep. The mark on the top of stone is deeply etched and entirely visible. It was observed that the capped rebar (removed during excavation) had been 0.15 foot south of the mark on the stone. After consultation with the Hendricks County Surveyor's Office, the mark on the stone was held as the specific position of the corner. A Harrison monument was set directly over this point, 0.15 foot north of the capped rebar found prior to excavation.



Kenneth E. Hedge
Kenneth E. Hedge, County Surveyor

Perry Township
Boone County

James S. Swift
James S. Swift, IN LS 20200054
September 11, 2019

Brown Township
Hendricks County

Section 9 T17N, R1E	Section 10 T17N, R1E
Section 16 T17N, R1E	Section 15 T17N, R1E

An arrow points from the center of the intersection of Section 10 and Section 15 to the Harrison monument location.

SECTION CORNER RECORD

SE 800-400

BOONE COUNTY SURVEYOR'S OFFICE

State Plane grid coordinates NAD83 (2011):

Witness Rebar: North: 1703675.49 East: 3146380.85 (U.S. survey feet)

Section Corner: North: 1703665.99 East: 3146380.98 (U.S. survey feet)

Type of monument: 5/8" diameter rebar with cap stamped

'Boone County Surveyor', set as witness, on line, 9.5' north of corner

Depth: Three inches above surrounding ground

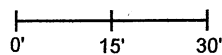
Indiana tie card references:

IN02_T17NR1E11_72 IN02_T17NR1E10_80

IN02_T17NR1E15_08 IN02_T17NR1E14_00

CORNER WITNESS DETAIL

SCALE 1" = 30'

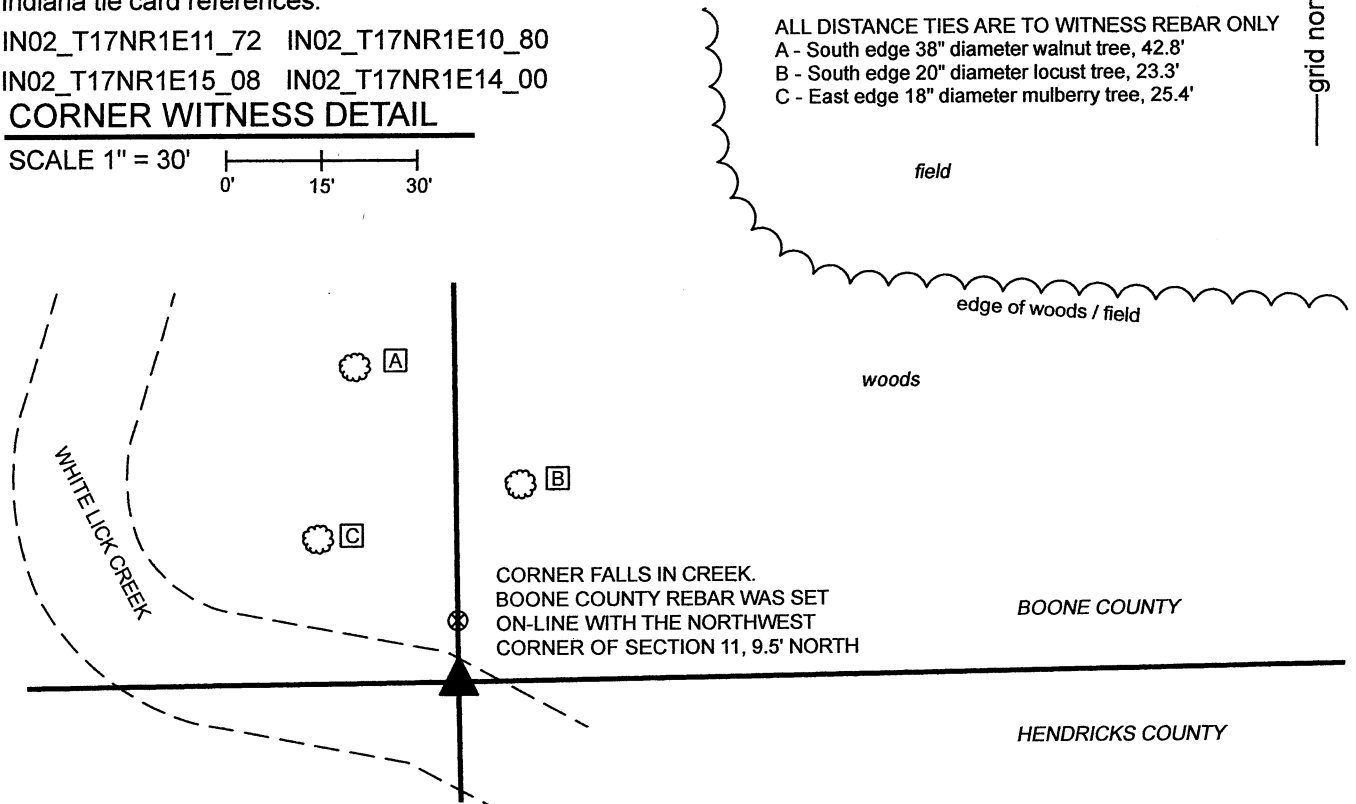
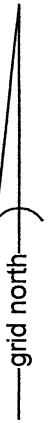


ALL DISTANCE TIES ARE TO WITNESS REBAR ONLY

A - South edge 38" diameter walnut tree, 42.8'

B - South edge 20" diameter locust tree, 23.3'

C - East edge 18" diameter mulberry tree, 25.4'



CORNER FALLS IN CREEK.
BOONE COUNTY REBAR WAS SET
ON-LINE WITH THE NORTHWEST
CORNER OF SECTION 11, 9.5' NORTH

BOONE COUNTY

HENDRICKS COUNTY

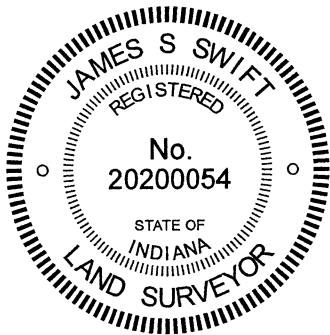
The witness rebar was set 9.5 feet north of a computed position of the corner.

No specific descriptions of this corner were found in the BCS Surveyor's Record beyond the original establishment of the corner as a wood post in 1820. Hendricks County records call for a stone of dimensions 8x10x12 inches marking the corner. Reconnaissance and excavation by the Hendricks County Surveyor's Office in December, 2017 did not yield reliable evidence of the corner.

This corner is shown as being a wood post on a survey by Jerry L. Carter, LS S0350, dated March 19, 2002 and recorded as Instrument 0208419 in the Office of the Boone County Recorder. This position was computed with respect to other monuments shown on the Carter survey and recovered in the field. The computed position of the post falls within the banks of White Lick Creek as it currently exists and the post was not found. The computed position for the post agrees precisely with a rebar found marking the southeast corner of the southwest quarter of Section 11, said rebar being at the midpoint of the line connecting the subject corner and south quarter corner of Section 11 (see BCS Corner SE 800-450), and said rebar being 2.4 feet east of a wood corner post marking historical occupation at said quarter-quarter corner.

Fragments of north-south fence were found in the vicinity of the section line north of the creek. These fence fragments generally agree with the position of the line as computed with respect to the Carter survey but no standing fence or strong evidence of an old fence on the ground was found and it appears that the fencing has been mostly removed from the area.

As the corner falls in the creek, a 36-inch length of 5/8-inch diameter rebar was set on the section line as a witness, 9.5 feet north of the corner.



Kenneth E. Hedge
Kenneth E. Hedge, County Surveyor

James S. Swift
James S. Swift, IN LS 20200054
November 23, 2021

Perry
Township
Boone
County

Brown
Township
Hendricks
County

Section 10 T17N, R1E	Section 11 T17N, R1E
Section 15 T17N, R1E	Section 14 T17N, R1E