

# SECTION CORNER RECORD

## BOONE COUNTY SURVEYOR'S OFFICE

SW 700-900

State Plane grid coordinates NAD83 (2011):

North: 1708175.96 East: 3077445.1 (U.S. survey feet)

Type of monument: Harrison, 4" disk 'Section Corner'

Depth: Six inches above adjacent ground

Indiana tie card references:

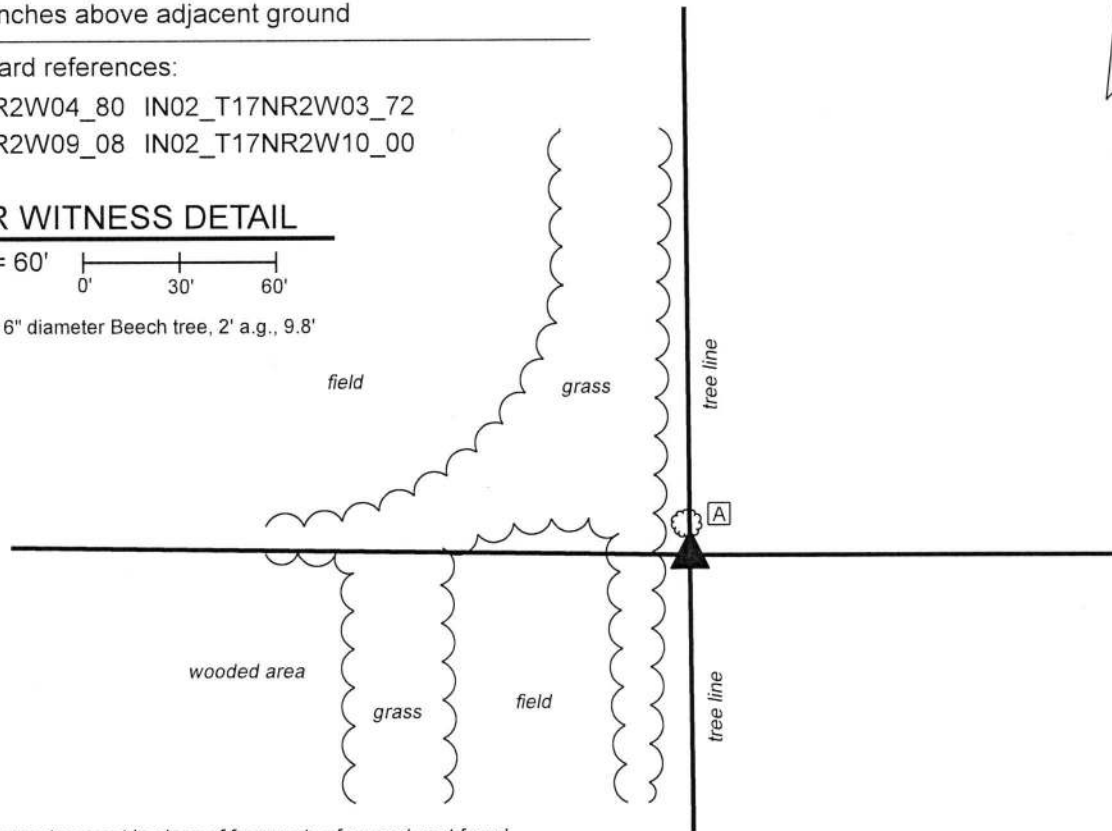
IN02\_T17NR2W04\_80 IN02\_T17NR2W03\_72

IN02\_T17NR2W09\_08 IN02\_T17NR2W10\_00

### CORNER WITNESS DETAIL

SCALE 1" = 60'

A - South edge 6" diameter Beech tree, 2' a.g., 9.8'

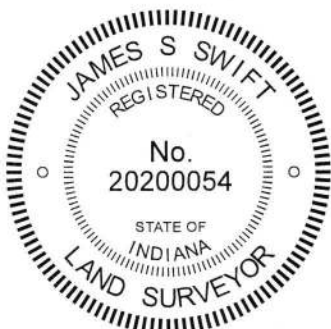


The Harrison monument was set in place of fragments of a wood post found.

A BCS record dated April 1, 1865 states, with respect to this corner, "Found a stake and one tree (down)." A record of December 2, 1868 states "Reest. from roots of elm and a stake. Set rock 20.11.8 mark +." A subsequent record of December 30-31, 1878 does not specifically describe the corner but does provide distances from the subject corner to the northeast and northwest corners of section 9.

This corner was excavated on March 1, 2019 and on September 12, 2019. Prior to excavation, a north-south tree line was observed, but minimal evidence of the east-west lines was visible. A steel t-post in the north-south tree line was observed as the only above-ground evidence of the corner and had been considered previously as an approximate position of the corner for purpose of analysis of the north line of section 10. Prior to searching for more reliable evidence of the subject corner, the distances reported in the 1878 record were used to approximate the position of the corner, as held at that time. This analysis yielded the conclusion that the aforementioned t-post was most likely 16 to 20 feet north of the corner as held in 1878. Excavation in the vicinity of the computed position of the corner revealed numerous rocks surrounding fragments of a cedar post. Pieces of metal bracing hardware was also found in this immediate vicinity. No such evidence was found in the vicinity of the t-post to the north. The numerous rocks and post fragments clearly appeared in the field to represent the old corner and associated rocks. Substantial manual excavation in this vicinity did not reveal the rock described in the 1868 record. Several of the found rocks were of similar dimension but none could be confirmed to be the specific rock referenced in that entry. A large rock, being 22 inches east-west by 20 inches north-south by 15 inches tall (as measured on the north edge) was found embedded in the ground immediately south of the fragments of post and other rocks. The fragments of cedar post were accepted as providing the best available evidence of the corner. A Harrison monument was set in place of this evidence, anchored with concrete to the north side of the aforementioned large rock. The monument was surrounded by several of the other smaller rocks found during excavation.

This corner was originally established as a wood post in 1820.



*Kenneth E. Hedge*  
Kenneth E. Hedge, County Surveyor

*James S. Swift*  
James S. Swift, IN LS 20200054  
October 15, 2019

Jackson Township

Section 4 T17N, R2W	Section 3 T17N, R2W
Section 9 T17N, R2W	Section 10 T17N, R2W

# SECTION CORNER RECORD

## BOONE COUNTY SURVEYOR'S OFFICE

SW 700-1000

State Plane grid coordinates NAD83 (2011):

North: 1708250.11 East: 3072176.60 (U.S. survey feet)

Type of monument: Harrison, 4" disk 'Section Corner'

Depth: Six inches below adjacent gravel road surface

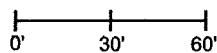
Indiana tie card references:

IN02\_T17NR2W05\_80 IN02\_T17NR2W04\_72

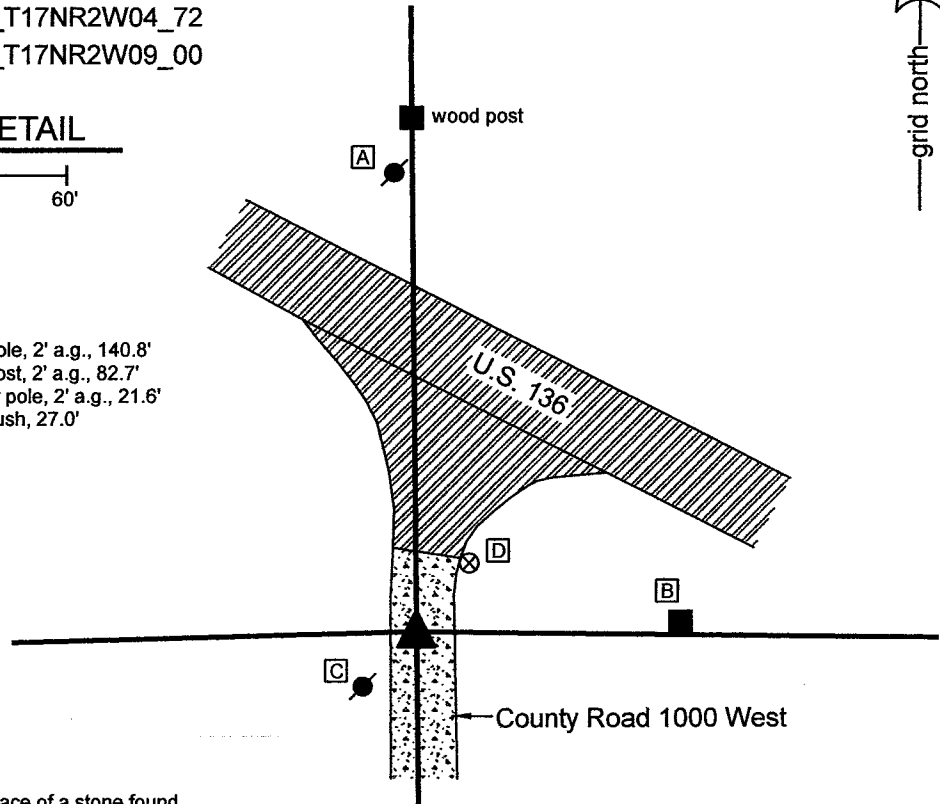
IN02\_T17NR2W08\_08 IN02\_T17NR2W09\_00

### CORNER WITNESS DETAIL

SCALE 1" = 60'



- A - Mag nail set in S. side power pole, 2' a.g., 140.8'
- B - Mag nail set in W. side wood post, 2' a.g., 82.7'
- C - Mag nail set in N.E. side power pole, 2' a.g., 21.6'
- D - Boone County witness mark, flush, 27.0'

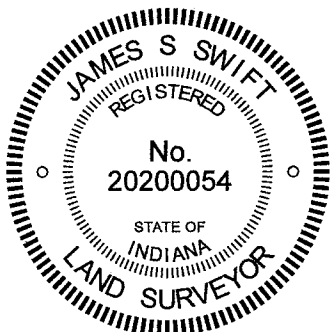


The Harrison monument was set in place of a stone found.

A BCS record of February 12, 1874 states, with respect to this corner, "Reestablished cor sects 4,5,8&9. Set rock 17,12,9 +." No recent BCS tie cards were found referencing this corner.

Excavation was performed at this corner on June 10, 2021. Prior to excavation, a vertical section of railroad rail of unknown origin was found at 3 inches deep in the approximate position of the corner. Excavation revealed the stone described in the 1874 record at 7 inches deep, approximately 4 feet north of the rail. As found, the stone was embedded in the clay layer below the road, protruding 4 inches into the bottom of the road bed. The stone was vertical and evidently undisturbed with a clearly visible "+" mark etched on the top of the stone. The stone was removed from the road bed and found to have been 17 inches tall by 12 inches E-W and 10 inches N-S, which matches well with the dimensions specified in the 1874 record. The position of the stone works remarkably well with the relative position of corners to the south, including evidence 1/4 mile south, as stated in the 1874 record. The stone is also generally in-line with an ancient wood post with brace notches found near the southerly R/W of U.S. 136, slightly east of the corner. The stone was accepted as being the same monument as called in the 1874 record and was held as marking the corner. The stone was removed from the road and replaced with a Harrison monument in the position of the etched "+" mark on the top of the stone. The railroad rail, removed during excavation, had been 4.3 feet south and 0.6 foot west of the mark on the top of the stone.

This corner was originally established as a wood post in 1820.



*Kenneth E. Hedge*  
 Kenneth E. Hedge, County Surveyor

*James S. Swift*  
 James S. Swift, IN LS 20200054  
 June 16, 2021

Jackson Township

Section 5 T17N, R2W	Section 4 T17N, R2W
Section 8 T17N, R2W	Section 9 T17N, R2W

# SECTION CORNER RECORD

# SW 750-900

## BOONE COUNTY SURVEYOR'S OFFICE

State Plane grid coordinates NAD83 (2011):

North: 1705527.71 East: 3077473.91 (U.S. survey feet)

Type of monument: Harrison, 4" disk 'Section Corner'

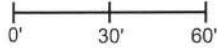
Depth: flush with adjacent ground

Indiana tie card references:

IN02\_T17NR2W09\_44 IN02\_T17NR2W10\_36

### CORNER WITNESS DETAIL

SCALE 1" = 60'



The Harrison Monument was set in place of a section of steel t-post found.

A BCS record dated April 21, 1865 calls the corner "Found stake and one tree (down)." A BCS record of December 2, 1868 states, with respect to this corner, "Reest from roots of Elm and a stake. Set a rock 22,13,8 marked +."

An undated BCS tie card known to date from the mid 1990s calls the corner "Metal Fence Post" and includes the statement "Stone removed and point reset previous record surveys." It is not clear to what surveys the card refers, as no surveys were found in the Boone County Recorders Office referencing the corner prior to the expected time frame of the tie card.

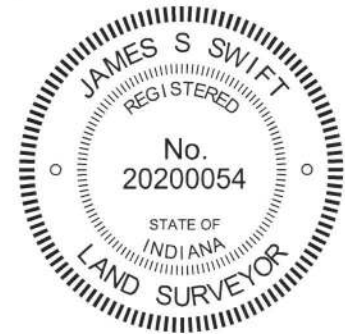
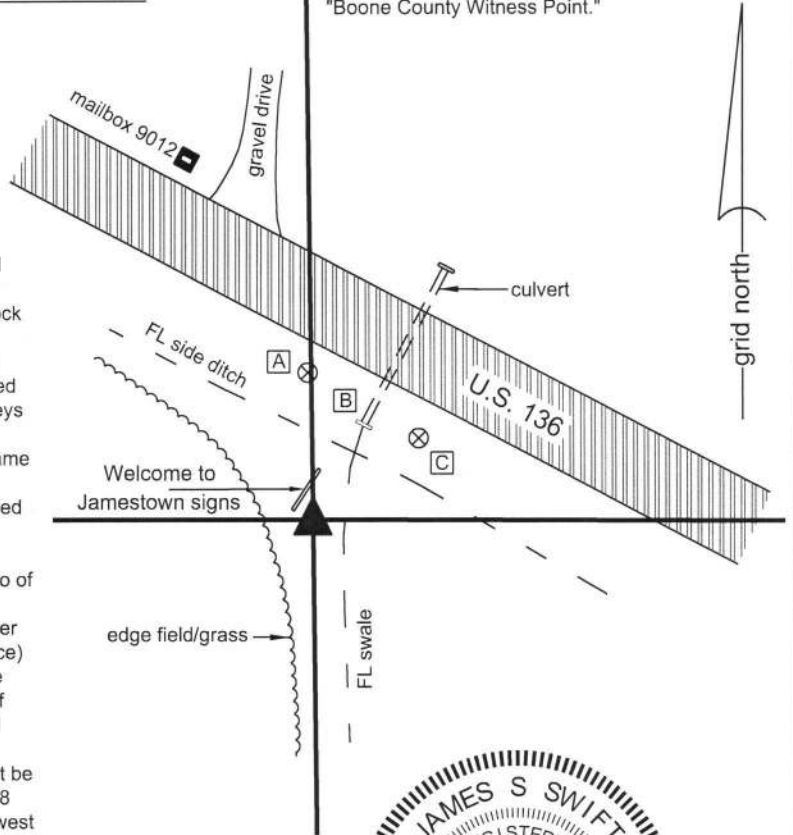
This corner falls along the edge of a substantial swale and it is believed highly unlikely that an older stone monument would remain in place, given the obvious excavation in the vicinity of the corner. The metal fence post referenced on the undated tie card was found, as were two of the witnesses monuments shown on that card. The description of a nearby property on the north side of US 136, slightly west of the corner (see Instrument 200700009490 in the Boone County Recorder's Office) is referenced to the corner with the specific reference to a steel fence post marking the apparent corner. Rebars called for at the corners of that property fit with the deed calls and the found steel post. Minimal uncertainty is associated with the position of the post, as found and referenced on the undated tie card. However, some uncertainty must be associated with the generally accepted position of the corner, as a 5/8 inch rebar was also found approximately 0.8 foot south and 0.8 foot west of the steel fence post. It is believed that this rebar has been held as the corner for recent surveys in the vicinity though confirmation was not found in the Boone County Recorder's Office, as the rebar is not mentioned on the recorded surveys found. The rebar was left in place, but is not considered the corner, as the available records indicate that the steel post is the corner.

Further uncertainty is also associated with this corner with respect to the plats of the Western Acres subdivisions adjoining the corner to the south and west. The plat for the original Western Acres subdivision, Plat Book 5, page 20, Boone County Recorder's Office shows the corner at a position which is believed to be approximately 18.4 feet further north than the position of the corner as established by this document and the previous tie card. It is noted that the subsequent two plats for additional Western Acres additions are tied to the southwest corner of section 10, rather than to the west quarter corner (subject corner) which is closer to the subdivisions and was already referenced on the first Western Acres plat. The plats of the second and third additions are tied to the west line of the southwest quarter of section 10 but do not reference the west quarter corner. It is apparent from monumentation found in Western Acres Second Addition (Plat Book 8, page 53), that the plats were tied to a corner much closer to the corner held currently than the corner shown on the first addition.

Hence, uncertainties of up to 18.5 feet north-south may be associated with the position of the corner with respect to the plat of the original Western Acres subdivision and uncertainties of 1 foot in all directions may be associated with the presence of the found 5/8 inch rebar.

- A - Boone County witness mark, flush, 45.9'
- B - Middle, South edge of concrete headwall, 33.0'
- C - 5/8 inch rebar found, no cap, 41.6'

Boone County witness mark is a 3/8" diameter x 2' long rebar bearing a metal cap stamped "Boone County Witness Point."



*Kenneth E. Hedge*  
 Kenneth E. Hedge, County Surveyor

*James S. Swift*  
 James S. Swift, IN LS 20200054

September 26, 2017

Jackson Township

Section 9 T17N, R2W	▲	Section 10 T17N, R2W
------------------------	---	-------------------------

# SECTION CORNER RECORD

SW 750-1000

## BOONE COUNTY SURVEYOR'S OFFICE

State Plane grid coordinates NAD83 (2011):

North: 1705607.33 East: 3072213.47 (U.S. survey feet)

Type of monument: Harrison, 4" disk 'Section Corner'

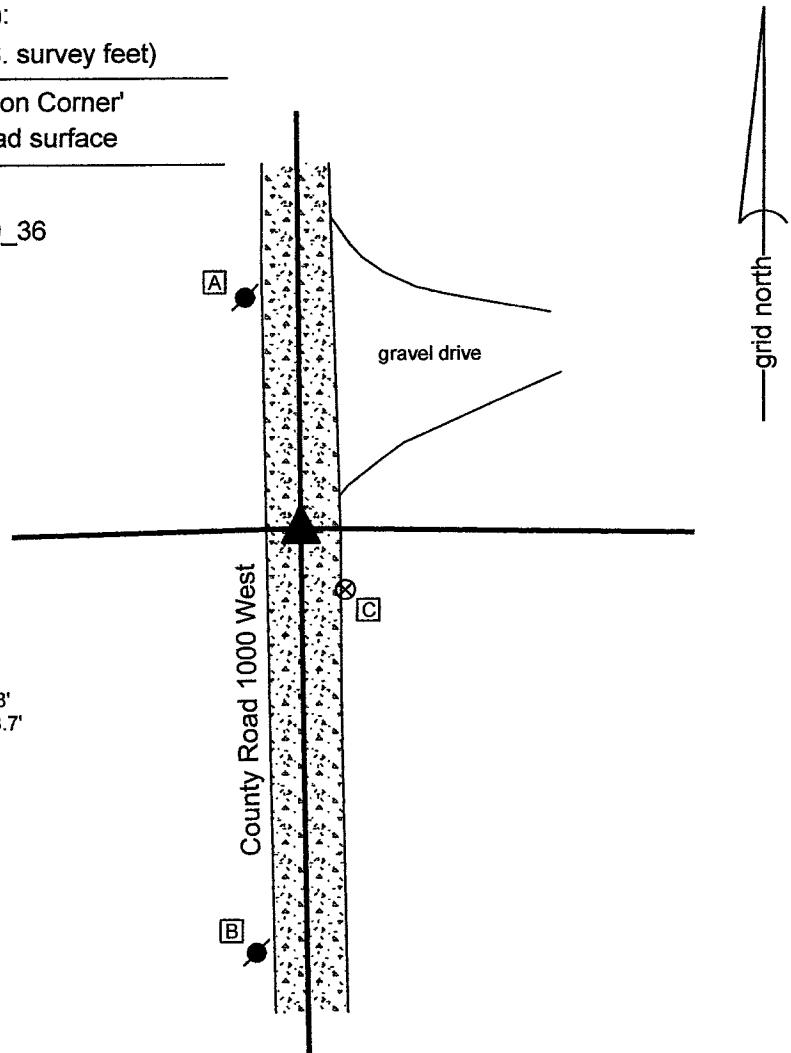
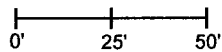
Depth: Six inches below adjacent gravel road surface

Indiana tie card references:

IN02\_T17NR2W08\_44 IN02\_T17NR2W09\_36

### CORNER WITNESS DETAIL

SCALE 1" = 50'



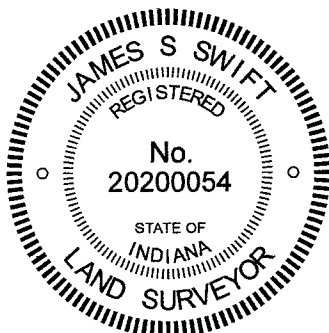
- A - Mag nail set in S.E. side power pole, 2' a.g., 59.8'
- B - Mag nail set in N.E. side power pole, 2' a.g., 108.7'
- C - Boone County witness mark, flush, 19.9'

The Harrison monument was set in place of a stone found.

A BCS record October 23, 1858 states, with respect to this corner, "Set Rock 14x24." No recent BCS tie cards were found referencing the corner. The description in the deed for the adjacent property to the east, Deed Record 241, page 9, Boone County Recorder, calls for an iron pin over a stone at this corner.

Excavation was performed at this corner on June 10, 2021. Prior to excavation, no metal monument was found marking the corner. The position of the stone was computed with respect to accessory evidence, per the description in Deed Record 241, page 9. Excavation revealed the stone described in the 1858 record at 8 inches deep in the gravel roadway, within 1.5 feet of the computed position. The stone appeared to be undisturbed as found. No specific marks were observed on the stone and none were mentioned in the 1858 record. The stone was removed from the road and found to measure 24 inches tall by 14 inches E-W by 12 inches N-S, matching the 1858 call of 14x24. A Harrison monument was set in the same position as the top, center point of the stone as found.

This corner was originally established as a wood post in 1820.

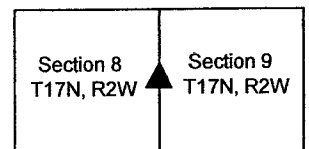


*Kenneth E. Hedge*  
 Kenneth E. Hedge, County Surveyor

*James S. Swift*  
 James S. Swift, IN LS 20200054

June 16, 2021

Jackson Township



# SECTION CORNER RECORD

SW 800-900

## BOONE COUNTY SURVEYOR'S OFFICE

State Plane grid coordinates NAD83 (2011):

North: 1702885.50 East: 3077504.43 (U.S. survey feet)

Type of monument: one-inch diameter iron pin in concrete

Depth: Flush with adjacent road surface

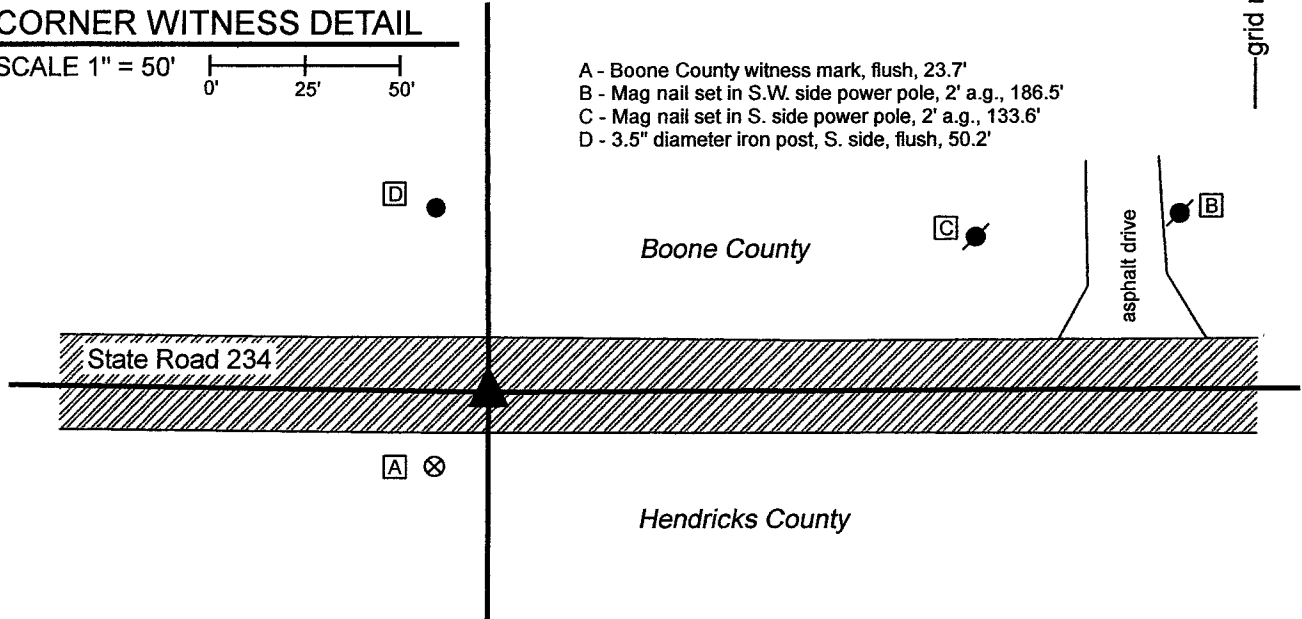
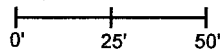
Indiana tie card references:

IN02\_T17NR2W10\_72 IN02\_T17NR2W09\_80

IN02\_T17NR2W16\_08 IN02\_T17NR2W15\_00

### CORNER WITNESS DETAIL

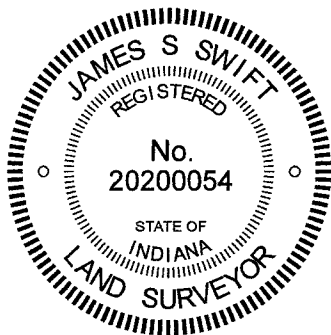
SCALE 1" = 50'



The iron pin in concrete was found and held as marking the corner.

A BCS record of May 17-18, 1866 states, with respect to this corner, "Found point by measure there found roots of both trees. Also an old stake in ground at corner. Drove stake and set two rocks. Under one sandy 5.4.2-1/2. Top one 16.12.12." No recent BCS tie cards were found referencing the corner.

The plans for State Road 234, being Proj. No. WPSS and MS-431, Indiana State Highway Commission, S.R. 43 - Jamestown Road (1936) show a "hole in corner stone" at P.I. Station 794+17.23. These plans do not specifically call out the P.I. as a section corner, but do show at the P.I. in line with the state road centerline to the east and west and in-line with fences to the north and south, with the call of Section Line P.L. along the fences. The 1-inch diameter iron pin in concrete appears to be a typical INDOT section corner monument but no information was provided by INDOT as to when this specific monument was set. A full route survey was not performed to determine the precise station of the monument, but it is noted the distances between this monument and other similar monuments found along this stretch of road match the computed distances between stations shown on the plans within less than 0.5 foot. No excavation was performed at this corner as it falls in a state road. The iron pin in concrete was held as marking the corner.



*Kenneth E. Hedge*  
 Kenneth E. Hedge, County Surveyor

*James S. Swift*  
 James S. Swift, IN LS 20200054  
 June 23, 2021

Jackson  
 Township  
 Boone  
 County

Eel River  
 Township  
 Hendricks  
 County

Section 9 T17N, R2W	Section 10 T17N, R2W
Section 16 T17N, R2W	Section 15 T17N, R2W

# SECTION CORNER RECORD

# SW 800-1000

## BOONE COUNTY SURVEYOR'S OFFICE

State Plane grid coordinates NAD83 (2011):

North: 1702968.05 East: 3072255.52 (U.S. survey feet)

Type of monument: One-inch diameter iron pin in concrete

Depth: Flush with adjacent road surface

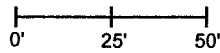
Indiana tie card references:

IN02\_T17NR2W09\_72 IN02\_T17NR2W08\_80

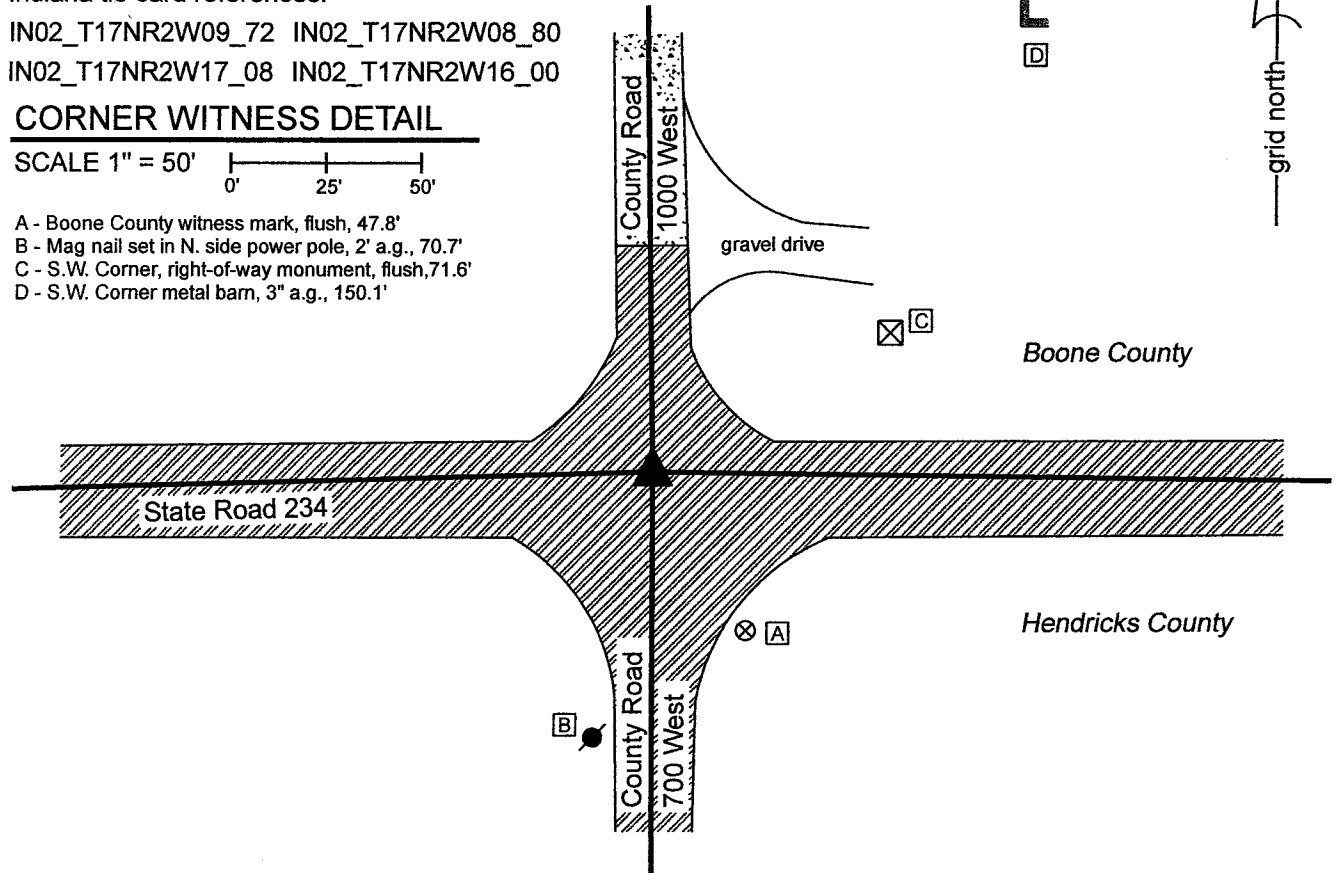
IN02\_T17NR2W17\_08 IN02\_T17NR2W16\_00

### CORNER WITNESS DETAIL

SCALE 1" = 50'



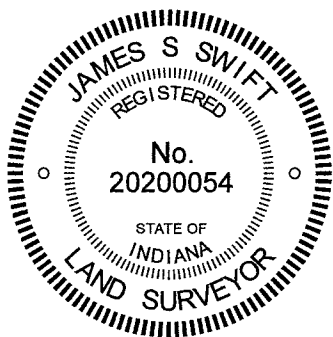
- A - Boone County witness mark, flush, 47.8'
- B - Mag nail set in N. side power pole, 2' a.g., 70.7'
- C - S.W. Corner, right-of-way monument, flush, 71.6'
- D - S.W. Corner metal barn, 3" a.g., 150.1'



The iron pin in concrete was found and held as marking the corner.

A BCS record of October 15 & 25, 1869 states, with respect to this corner, "A rock was at the Cor. Shown by a stump." No recent BCS tie cards were found referencing the corner.

The plans for State Road 234, being Proj. No. WPSS and MS-431, Indiana State Highway Commission, S.R. 43 - Jamestown Road (1936) show a stone with a hole at P.I. Station 741+67.48. These plans do not specifically call out the P.I. as a section corner, but do show at the P.I. in line with the state road centerline to the east and west and in-line with the north-south county road centerline, with the call of Section Line along the center of the north-south county road. The 1-inch diameter iron pin in concrete appears to be a typical INDOT section corner monument but no information was provided by INDOT as to when this specific monument was set. A full route survey was not performed to determine the precise station of the monument, but it is noted the distances between this monument and other similar monuments found along this stretch of road match the computed distances between stations shown on the plans within less than 0.5 foot. The relative position of this monument and a similar monument found at the southwest corner of Section 8 match the distances called out in the 1869 record within approximately 1.5 feet, as scaled by a standard scale factor of 1.00415 applied to BCS measurements from between 1860 and 1895. No excavation was performed at this corner as it falls in a state road. The iron pin in concrete was held as marking the corner.



*Kenneth E. Hedge*  
 Kenneth E. Hedge, County Surveyor

*James S. Swift*  
 James S. Swift, IN LS 20200054  
 June 23, 2021

Jackson Township  
Boone County

Eel River Township  
Hendricks County

Section 8 T17N, R2W	Section 9 T17N, R2W
Section 17 T17N, R2W	Section 16 T17N, R2W