

SECTION CORNER RECORD

SW 700-1000

BOONE COUNTY SURVEYOR'S OFFICE

State Plane grid coordinates NAD83 (2011):

North: 1708250.11 East: 3072176.60 (U.S. survey feet)

Type of monument: Harrison, 4" disk 'Section Corner'

Depth: Six inches below adjacent gravel road surface

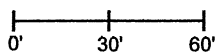
Indiana tie card references:

IN02_T17NR2W05_80 IN02_T17NR2W04_72

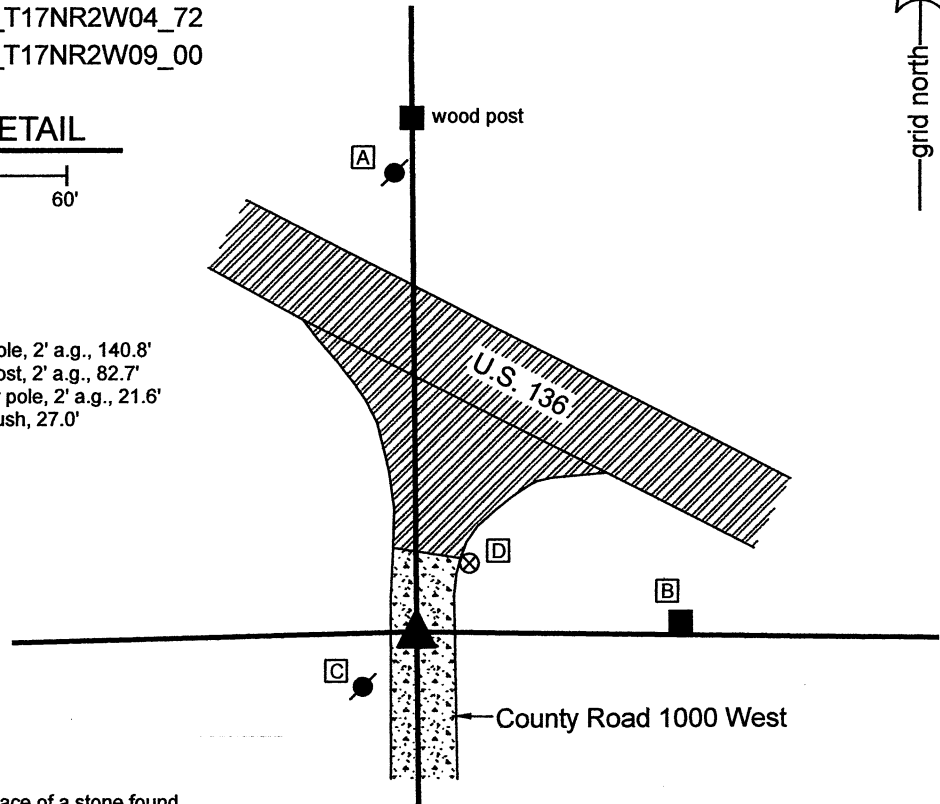
IN02_T17NR2W08_08 IN02_T17NR2W09_00

CORNER WITNESS DETAIL

SCALE 1" = 60'



- A - Mag nail set in S. side power pole, 2' a.g., 140.8'
- B - Mag nail set in W. side wood post, 2' a.g., 82.7'
- C - Mag nail set in N.E. side power pole, 2' a.g., 21.6'
- D - Boone County witness mark, flush, 27.0'

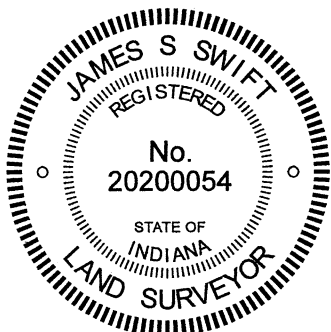


The Harrison monument was set in place of a stone found.

A BCS record of February 12, 1874 states, with respect to this corner, "Reestablished cor sects 4,5,8&9. Set rock 17,12,9 +." No recent BCS tie cards were found referencing this corner.

Excavation was performed at this corner on June 10, 2021. Prior to excavation, a vertical section of railroad rail of unknown origin was found at 3 inches deep in the approximate position of the corner. Excavation revealed the stone described in the 1874 record at 7 inches deep, approximately 4 feet north of the rail. As found, the stone was embedded in the clay layer below the road, protruding 4 inches into the bottom of the road bed. The stone was vertical and evidently undisturbed with a clearly visible "+" mark etched on the top of the stone. The stone was removed from the road bed and found to have been 17 inches tall by 12 inches E-W and 10 inches N-S, which matches well with the dimensions specified in the 1874 record. The position of the stone works remarkably well with the relative position of corners to the south, including evidence 1/4 mile south, as stated in the 1874 record. The stone is also generally in-line with an ancient wood post with brace notches found near the southerly R/W of U.S. 136, slightly east of the corner. The stone was accepted as being the same monument as called in the 1874 record and was held as marking the corner. The stone was removed from the road and replaced with a Harrison monument in the position of the etched "+" mark on the top of the stone. The railroad rail, removed during excavation, had been 4.3 feet south and 0.6 foot west of the mark on the top of the stone.

This corner was originally established as a wood post in 1820.



Kenneth E. Hedge

 Kenneth E. Hedge, County Surveyor

James S. Swift

 James S. Swift, IN LS 20200054
 June 16, 2021

Jackson Township

Section 5 T17N, R2W	Section 4 T17N, R2W
Section 8 T17N, R2W	Section 9 T17N, R2W

SECTION CORNER RECORD

SW 700-1050

BOONE COUNTY SURVEYOR'S OFFICE

State Plane grid coordinates NAD83 (2011):

North: 1708176.40 East: 3069523.38 (U.S. survey feet)

Type of monument: Harrison, 4" disk 'Section Corner'

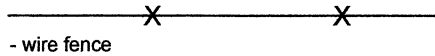
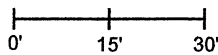
Depth: Three inches above surrounding ground

Indiana tie card references:

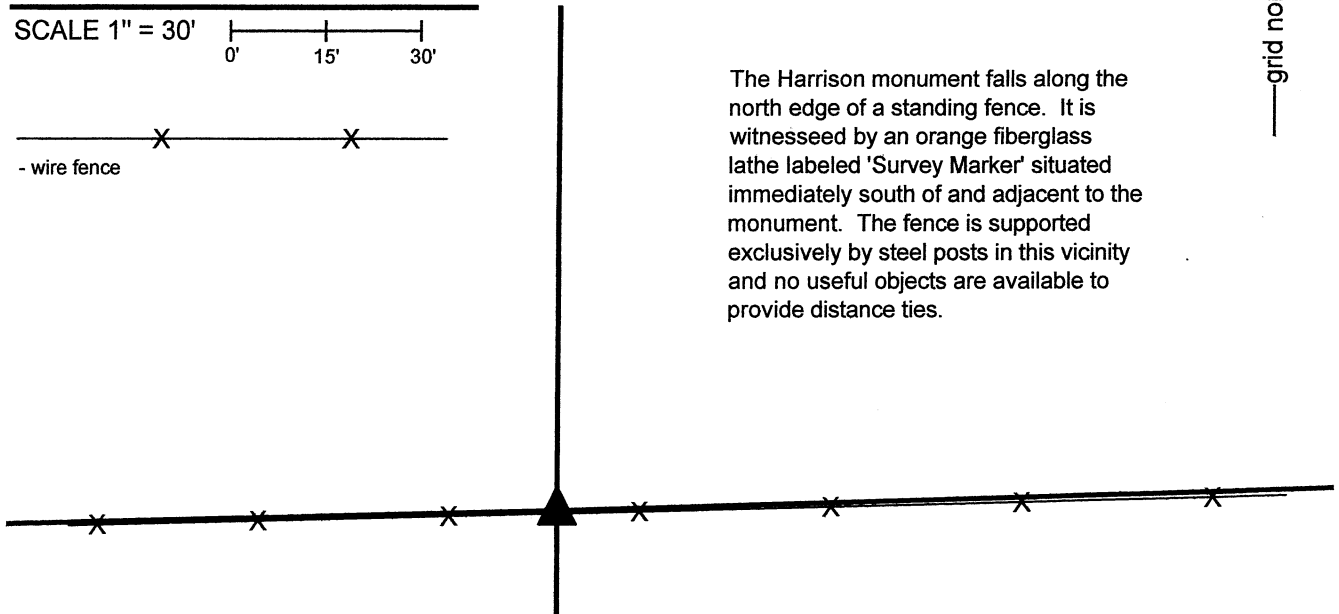
IN02_T17NR2W05_76 IN02_T17NR2W08_04

CORNER WITNESS DETAIL

SCALE 1" = 30'



The Harrison monument falls along the north edge of a standing fence. It is witnessed by an orange fiberglass lathe labeled 'Survey Marker' situated immediately south of and adjacent to the monument. The fence is supported exclusively by steel posts in this vicinity and no useful objects are available to provide distance ties.

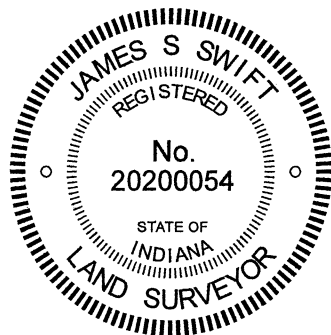


The Harrison monument was set in place of a stone found.

A BCS record of December 14-15, 1870 states, with respect to this corner, "Reestablished from stumps. Set a rock 16.12.8 marked +." No recent BCS tie cards were found referencing this corner, nor were any surveys recorded in the Office of the Boone County Recorder found referencing this corner. Excavation was performed at this corner on November 8-9, 2021. Prior to excavation, a stone was found witnessed by a wood lathe weaved into a standing east-west fence. The lathe appeared to have been installed by a surveyor and clearly appeared to be witnessing a stone found at the north edge of the standing fence, but no documentation was found to indicate what surveyor may have held this stone as marking the corner previously. The position of the found stone fit remarkably well in the east-west dimension with corner posts providing evidence of the southwest corner of the east half of the southwest quarter of Section 5 and a corner post providing evidence of the northeast corner of the west half of the northwest quarter of the northeast quarter of Section 8. The stone also fit with the local evidence of the corner, being adjacent to the standing east-west fence. It is also noted that the stone was in the immediate vicinity, being approximately 1 foot west of, a seam in the fence where two different sections of fence are adjoined, though no corner post was found at this point. The stone was also within 2 feet, east-west, of a computed midpoint of a straight line connecting the northeast and northwest corners of Section 8. The stone, however, is not the same dimensions as the rock described in the 1870 BCS record, being only 10 inches tall by 7 inches E-W by 4 inches N-S, as found. Extensive probing and manual excavation in the vicinity of the corner revealed only one other rock, being a small rock found 6 inches deep, approximately 2 feet east of the stone found at the surface. The rock called in the 1870 record was not found. It is noted that any old evidence which may have existed in the vicinity of, but north of the found stone, would likely have been obliterated by farming practices as it is clearly evident that the tilled land to the north of the fence is at a lower grade than the land along and south of the fence.

The stone found on the north edge of the standing fence was held to mark the corner. The stone was removed and replaced with a Harrison monument on November 9, 2021.

This corner was originally established as a wood post in 1820.



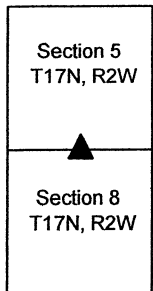
Kenneth E. Hedge

 Kenneth E. Hedge, County Surveyor

James S. Swift

 James S. Swift, IN LS 20200054
 November 15, 2021

Jackson Township



SECTION CORNER RECORD

SW 700-1100

BOONE COUNTY SURVEYOR'S OFFICE

State Plane grid coordinates NAD83 (2011):

North: 1708116.23 East: 3066866.31 (U.S. survey feet)

Type of monument: Harrison, 4" disk 'Section Corner'

Depth: One inch below adjacent road surface

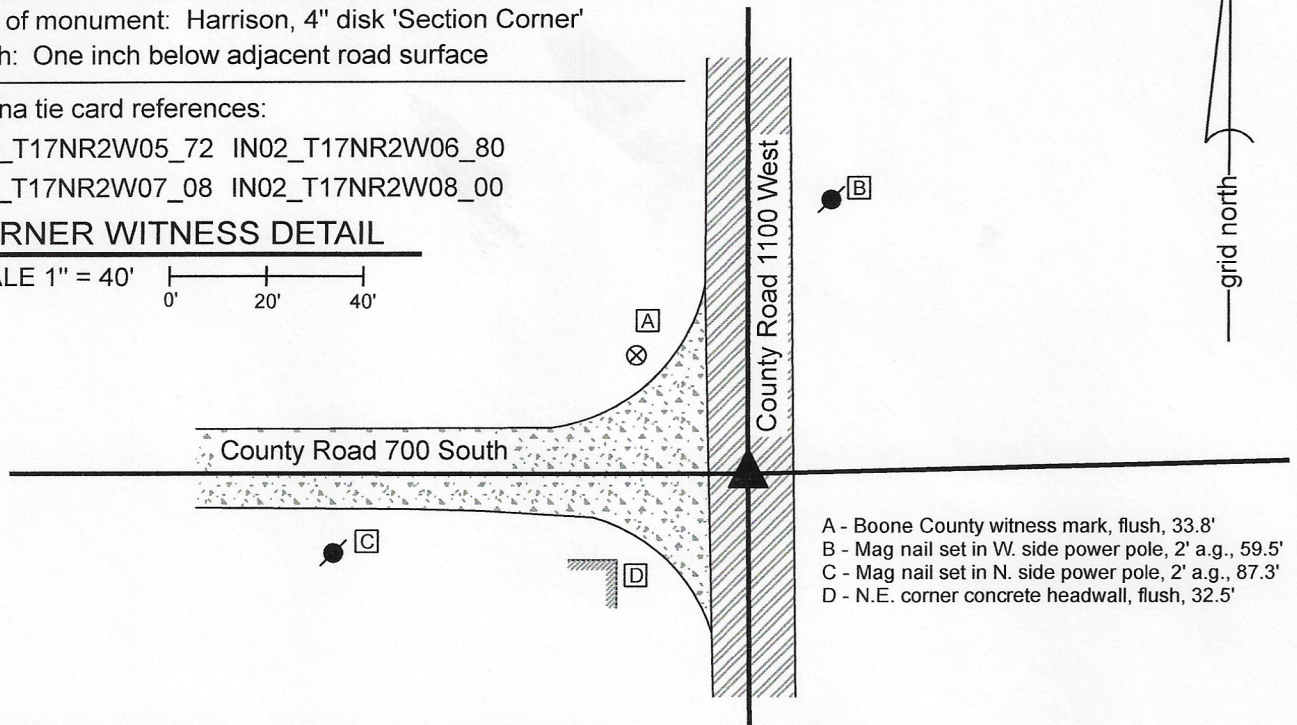
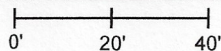
Indiana tie card references:

IN02_T17NR2W05_72 IN02_T17NR2W06_80

IN02_T17NR2W07_08 IN02_T17NR2W08_00

CORNER WITNESS DETAIL

SCALE 1" = 40'



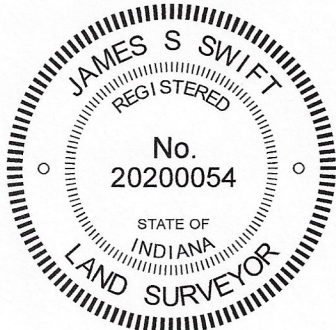
- A - Boone County witness mark, flush, 33.8'
- B - Mag nail set in W. side power pole, 2' a.g., 59.5'
- C - Mag nail set in N. side power pole, 2' a.g., 87.3'
- D - N.E. corner concrete headwall, flush, 32.5'

The Harrison monument was set in place of a rebar and a piece of vlay tile found.

No specific descriptions of this corner were found in the BCS Surveyor's Record. A BCS tie card dated August 10, 1988 calls the corner as "Stone found 3' deep. Set 1/2" iron rod on top of stone."

This corner was excavated on October 22, 2020. Prior to excavation, a 1/2 inch rebar was found at the surface of the road. The position of the found rebar fit precisely with several distance ties shown on the 1988 tie card. It is noted that prior to excavation, based on the experience of several hundred excavations in Boone County roads, the stated three-foot depth of the stone seemed extreme. It was expected that the bottom of the road bed would be at closer to 12 to 18 inches deep, based on the natural level of the surrounding ground. Excavation revealed that the expected depth of the road bed was correct, as the clay layer below the road bed is at approximately one foot below the current surface of the road. However, it was clearly evident that the clay immediately below the rebar had been previously disturbed. Further manual excavation directly below the position of the rebar indicated that the clay had been disturbed to a depth of approximately 20 inches. Below that, the clay appeared undisturbed. Probing below the 20 inch depth clearly indicated the presence of a stone. Further manual excavation revealed not a stone, but a piece of clay tile, at 27 inches deep. The tile was horizontal, concave side down, and oriented in cardinal directions, being 12 inches N-S by 5 inches E-W. The piece of tile was removed and no further hard objects were observed below with a probe. It is evident that the "stone" found in 1988 was actually the piece of tile. Apparently the three foot depth reported on the tie card was an estimation, as the piece of tile was found at 27 inches below the surface of the road. Based on the evidence of the disturbed and undisturbed sections of clay, it is concluded that the crew in 1988 most likely detected a hard object with a probe and determined it to be a stone. It does not appear that they actually exposed the tile. It is noted that Brandon Miller, excavator extraordinaire, at first believed the hard object detected with the probe was a stone. He has probed many tiles in his career and has noticed that they feel different than rocks. This object, being firmly embedded in the clay, concave side down, felt more like a stone than a piece of tile, when hit with the probe. After finding the piece of tile, a full excavation, being a five foot square area centered on the rebar, was completed to the depth of the clay layer below the road. No further evidence of the corner was found. The piece of tile is not typical evidence of a Boone County section corner, both in its physical character, being clay tile, and depth, being over a foot into the clay. However, it did appear to have been purposely set to mark the corner, has been held as marking the corner since 1988, and no contrary evidence of the corner was found. The position of the rebar and piece of tile were held as marking the corner. Both objects were removed and a Harrison monument was set in the position of the rebar as found at the surface of the road.

This corner was originally established as a wood post in 1820.



Kenneth E. Hedge
 Kenneth E. Hedge, County Surveyor

James S. Swift
 James S. Swift, IN LS 20200054

October 28, 2020

Jackson Township

Section 6 T17N, R2W	Section 5 T17N, R2W
Section 7 T17N, R2W	Section 8 T17N, R2W

SECTION CORNER RECORD

SW 750-1100

BOONE COUNTY SURVEYOR'S OFFICE

State Plane grid coordinates NAD83 (2011):

North: 1705465.96 East: 3066888.45 (U.S. survey feet)

Type of monument: Harrison, 4" disk 'Section Corner'

Depth: One inch below adjacent road surface

Indiana tie card references:

IN02_T17NR2W07_44 IN02_T17NR2W08_36

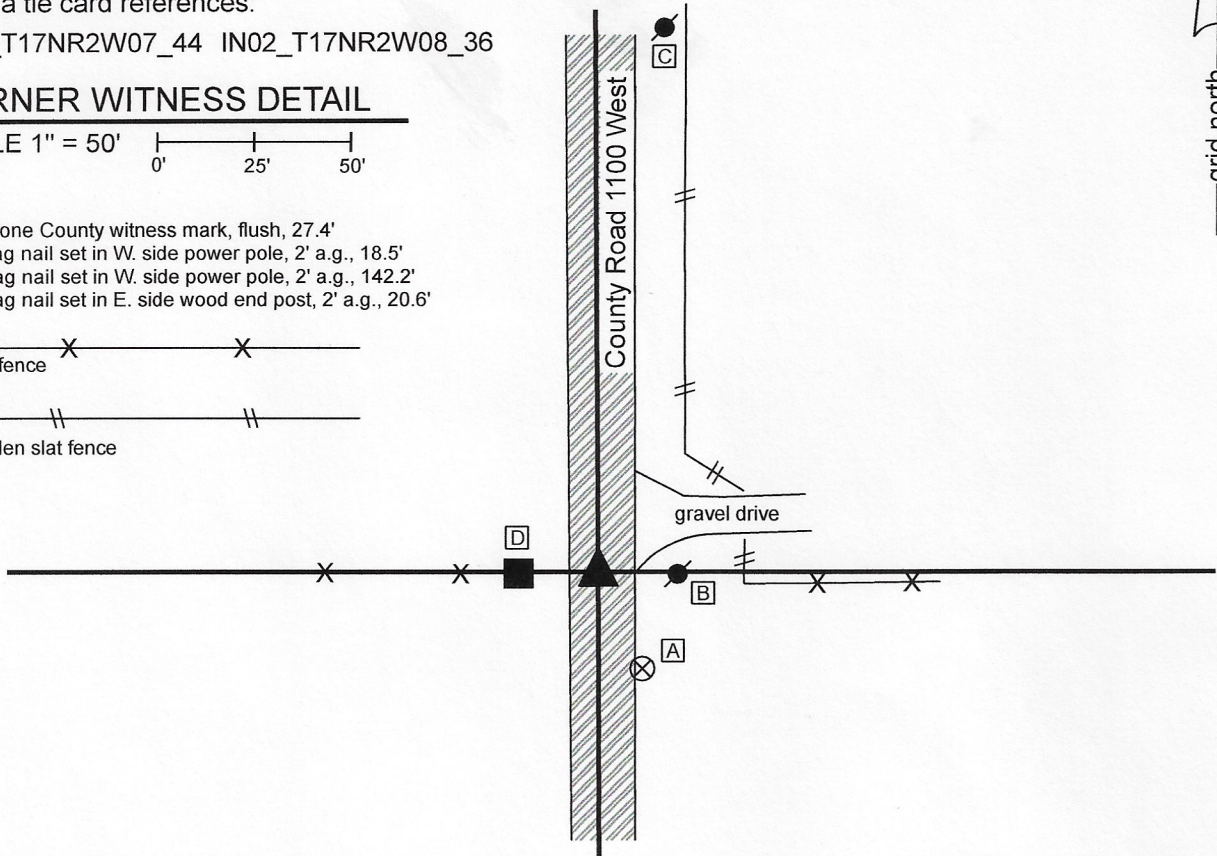
CORNER WITNESS DETAIL

SCALE 1" = 50'

- A - Boone County witness mark, flush, 27.4'
- B - Mag nail set in W. side power pole, 2' a.g., 18.5'
- C - Mag nail set in W. side power pole, 2' a.g., 142.2'
- D - Mag nail set in E. side wood end post, 2' a.g., 20.6'

- wire fence

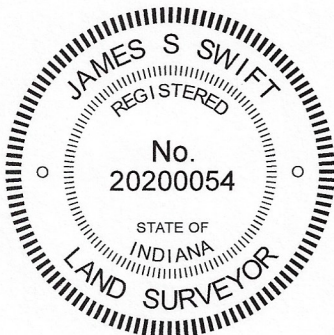
- wooden slat fence



The Harrison monument was set over a stone found.

No specific descriptions of this corner were found in the BCS Surveyor's Record nor were any recent BCS tie cards found referencing the corner. This corner was excavated on October 22, 2020. Prior to excavation, a railroad spike was found at 1 inch deep in the center of the road, in-line with an old fence to the west and an ancient corner post to the east. It is noted that a newer fence to the east is south of the other observed evidence of the corner. Excavation revealed a stone found at 18 inches deep, slightly north and west of the railroad spike. The stone was vertical, oriented in cardinal directions and embedded in the clay layer below the road bed. With the top 9 inches exposed, the stone measured 5 inches N-S by 7 inches E-W. The full height of the stone was not measured, though it was observed that it was not likely to be much taller than the exposed 9 inches, based on the stability of the rock with that much exposed. No specific marks were observed on the stone. The characteristics of the stone, being vertical, embedded in the clay, and oriented in cardinal directions, match the characteristics of other stones found marking sections corners throughout the county. The stone was held as marking the corner. It was left in place and a Harrison monument was set directly over the top, center of the stone. The railroad spike, removed during excavation, had been 0.2 foot south and 0.5 foot east of the top, center of the stone.

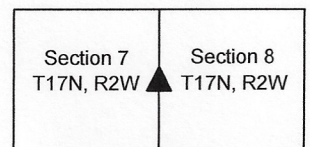
This corner was originally established as a wood post in 1820.



Kenneth E. Hedge, County Surveyor

James S. Swift, IN LS 20200054
 October 28, 2020

Jackson Township



SECTION CORNER RECORD

SW 750-1000

BOONE COUNTY SURVEYOR'S OFFICE

State Plane grid coordinates NAD83 (2011):

North: 1705607.33 East: 3072213.47 (U.S. survey feet)

Type of monument: Harrison, 4" disk 'Section Corner'

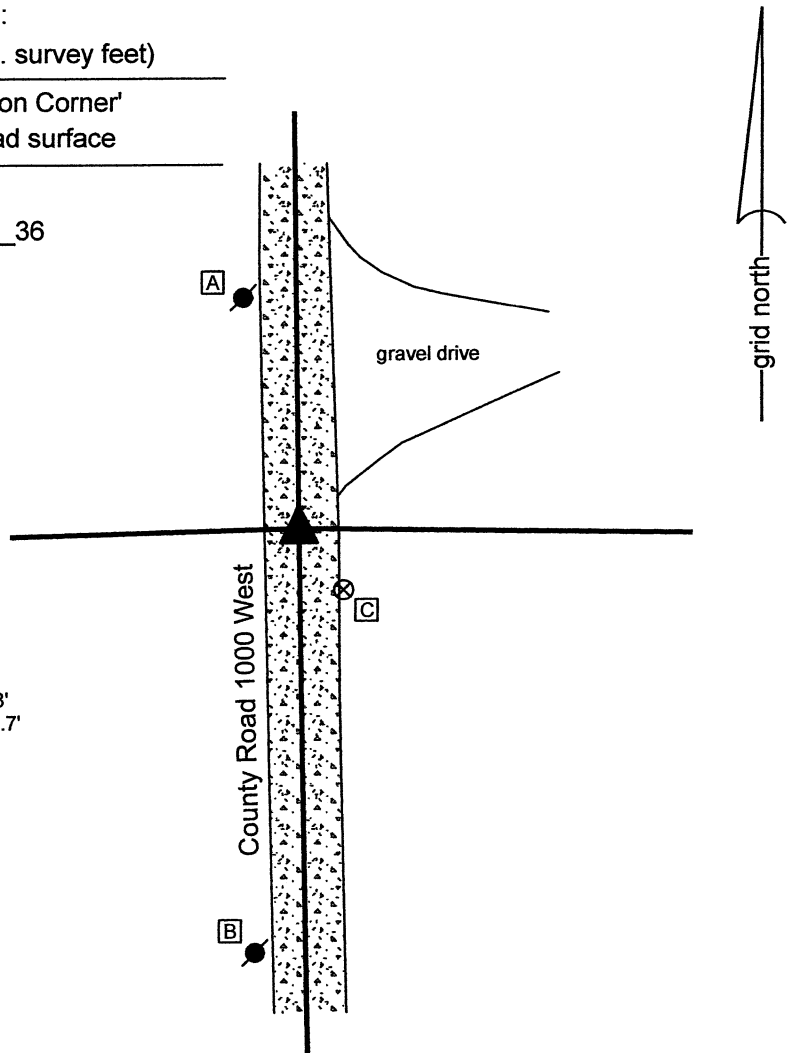
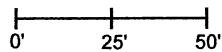
Depth: Six inches below adjacent gravel road surface

Indiana tie card references:

IN02_T17NR2W08_44 IN02_T17NR2W09_36

CORNER WITNESS DETAIL

SCALE 1" = 50'



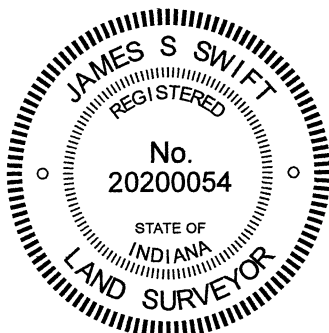
- A - Mag nail set in S.E. side power pole, 2' a.g., 59.8'
- B - Mag nail set in N.E. side power pole, 2' a.g., 108.7'
- C - Boone County witness mark, flush, 19.9'

The Harrison monument was set in place of a stone found.

A BCS record October 23, 1858 states, with respect to this corner, "Set Rock 14x24." No recent BCS tie cards were found referencing the corner. The description in the deed for the adjacent property to the east, Deed Record 241, page 9, Boone County Recorder, calls for an iron pin over a stone at this corner.

Excavation was performed at this corner on June 10, 2021. Prior to excavation, no metal monument was found marking the corner. The position of the stone was computed with respect to accessory evidence, per the description in Deed Record 241, page 9. Excavation revealed the stone described in the 1858 record at 8 inches deep in the gravel roadway, within 1.5 feet of the computed position. The stone appeared to be undisturbed as found. No specific marks were observed on the stone and none were mentioned in the 1858 record. The stone was removed from the road and found to measure 24 inches tall by 14 inches E-W by 12 inches N-S, matching the 1858 call of 14x24. A Harrison monument was set in the same position as the top, center point of the stone as found.

This corner was originally established as a wood post in 1820.

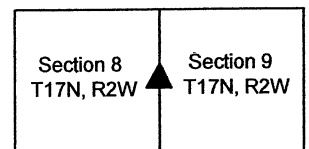


Kenneth E. Hedge
 Kenneth E. Hedge, County Surveyor

James S. Swift
 James S. Swift, IN LS 20200054

June 16, 2021

Jackson Township



SECTION CORNER RECORD

SW 800-1000

BOONE COUNTY SURVEYOR'S OFFICE

State Plane grid coordinates NAD83 (2011):

North: 1702968.05 East: 3072255.52 (U.S. survey feet)

Type of monument: One-inch diameter iron pin in concrete

Depth: Flush with adjacent road surface

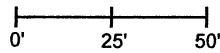
Indiana tie card references:

IN02_T17NR2W09_72 IN02_T17NR2W08_80

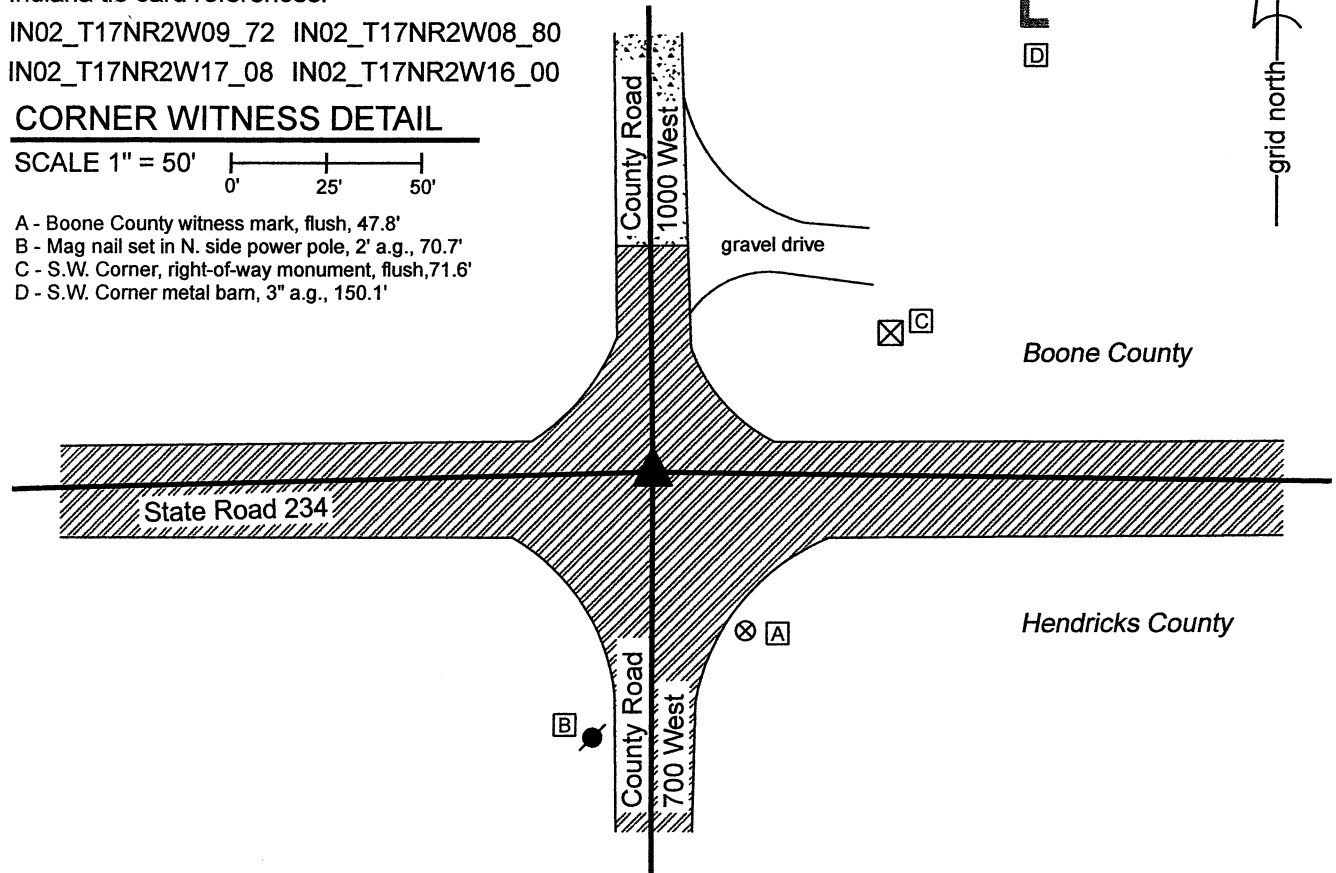
IN02_T17NR2W17_08 IN02_T17NR2W16_00

CORNER WITNESS DETAIL

SCALE 1" = 50'



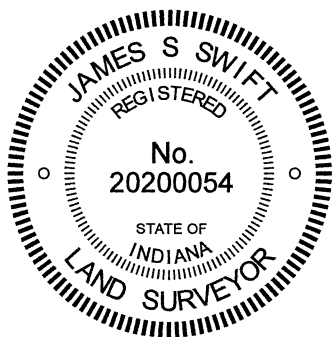
- A - Boone County witness mark, flush, 47.8'
- B - Mag nail set in N. side power pole, 2' a.g., 70.7'
- C - S.W. Corner, right-of-way monument, flush, 71.6'
- D - S.W. Corner metal bam, 3" a.g., 150.1'



The iron pin in concrete was found and held as marking the corner.

A BCS record of October 15 & 25, 1869 states, with respect to this corner, "A rock was at the Cor. Shown by a stump." No recent BCS tie cards were found referencing the corner.

The plans for State Road 234, being Proj. No. WPSS and MS-431, Indiana State Highway Commission, S.R. 43 - Jamestown Road (1936) show a stone with a hole at P.I. Station 741+67.48. These plans do not specifically call out the P.I. as a section corner, but do show at the P.I. in line with the state road centerline to the east and west and in-line with the north-south county road centerline, with the call of Section Line along the center of the north-south county road. The 1-inch diameter iron pin in concrete appears to be a typical INDOT section corner monument but no information was provided by INDOT as to when this specific monument was set. A full route survey was not performed to determine the precise station of the monument, but it is noted the distances between this monument and other similar monuments found along this stretch of road match the computed distances between stations shown on the plans within less than 0.5 foot. The relative position of this monument and a similar monument found at the southwest corner of Section 8 match the distances called out in the 1869 record within approximately 1.5 feet, as scaled by a standard scale factor of 1.00415 applied to BCS measurements from between 1860 and 1895. No excavation was performed at this corner as it falls in a state road. The iron pin in concrete was held as marking the corner.



Kenneth E. Hedge
 Kenneth E. Hedge, County Surveyor

James S. Swift
 James S. Swift, IN LS 20200054
 June 23, 2021

Jackson
 Township
 Boone
 County

Eel River
 Township
 Hendricks
 County

Section 8 T17N, R2W	Section 9 T17N, R2W
Section 17 T17N, R2W	Section 16 T17N, R2W

SECTION CORNER RECORD

SW 800-1050

BOONE COUNTY SURVEYOR'S OFFICE

State Plane grid coordinates NAD83 (2011):

North: 1702897.30 East: 3069575.12 (U.S. survey feet)

Type of monument: One-inch diameter iron pin in concrete

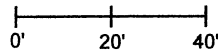
Depth: Four inches below adjacent road surface

Indiana tie card references:

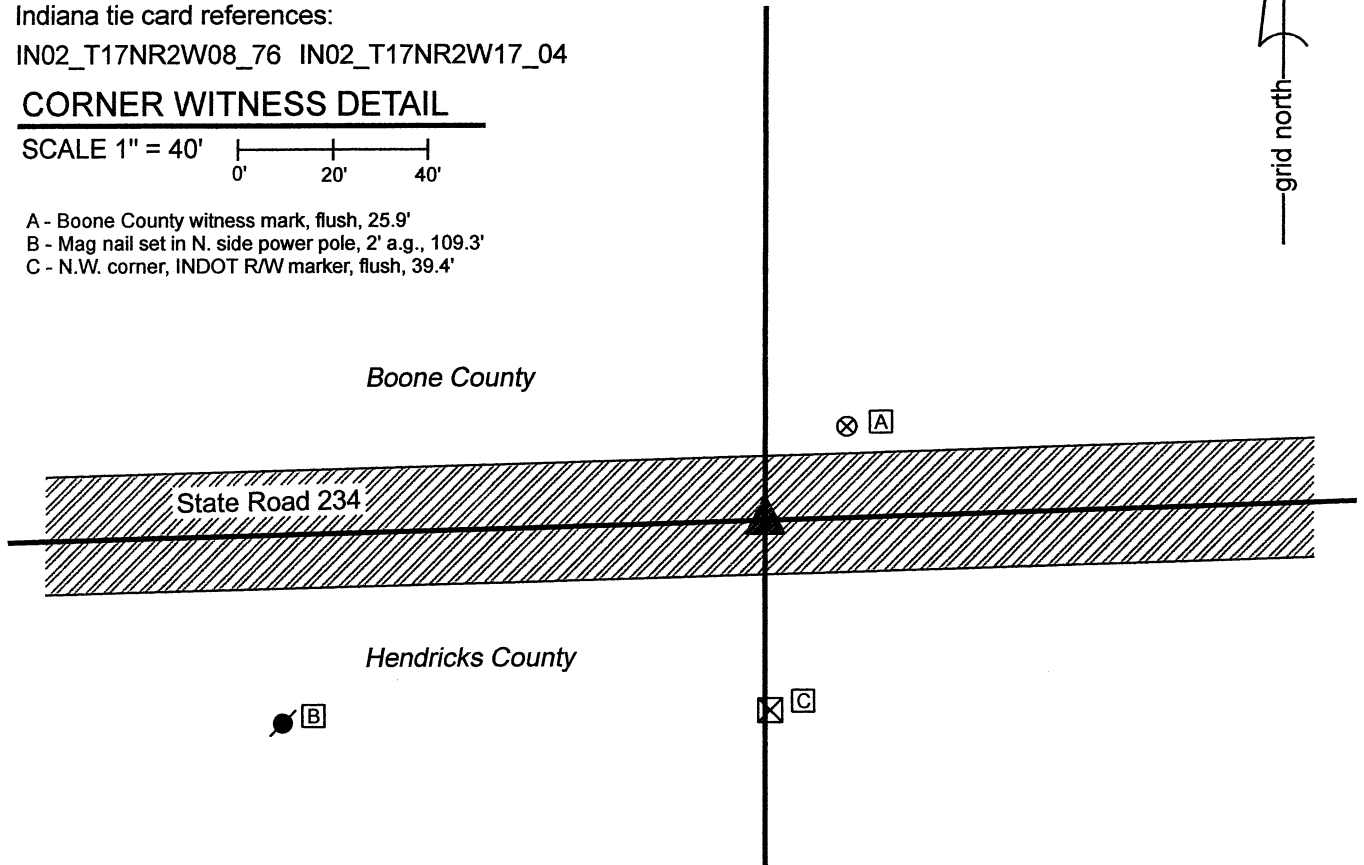
IN02_T17NR2W08_76 IN02_T17NR2W17_04

CORNER WITNESS DETAIL

SCALE 1" = 40'



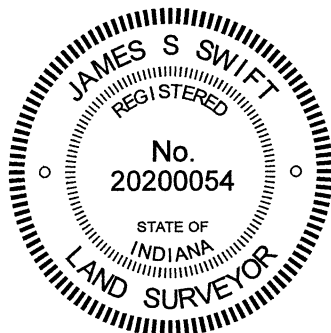
- A - Boone County witness mark, flush, 25.9'
- B - Mag nail set in N. side power pole, 2' a.g., 109.3'
- C - N.W. corner, INDOT R/W marker, flush, 39.4'



The iron pin in concrete was found and held as marking the corner.

A BCS record dated April 19, 1895 states, with respect to this corner, "Established a rock 24x8x8 not marked." No recent BCS tie cards were found referencing the corner.

The plans for State Road 234, being Proj. No. WPSS and MS-431, Indiana State Highway Commission, S.R. 43 - Jamestown Road (1936) do not specifically call out this corner. They do show north-south fences to both sides of the road with a call of P.L. along the fence to the north and a shift from 40-foot to 35-foot right-of-way on the south side. The 1-inch diameter iron pin in concrete appears to be a typical INDOT section corner monument but no information was provided by INDOT as to when this specific monument was set. A full route survey was not performed to determine the precise station of the monument, but it is noted the distances between this monument and other similar monuments found along this stretch of road match the computed distances between stations shown on the plans within less than 0.5 foot. It is also noted that the distance between this monument and a similar monument held as marking the southwest corner of Section 8 matches the distances recited in the 1895 record within 0.5 foot. No excavation was performed at this corner as it falls in a state road. The iron pin in concrete was held as marking the corner.



Kenneth E. Hedge, County Surveyor

James S. Swift, IN LS 20200054
June 23, 2021

Jackson
Township
Boone
County

Section 8
T17N, R2W

Eel River
Township
Hendricks
County

Section 17
T17N, R2W

SECTION CORNER RECORD

SW 800-1100

BOONE COUNTY SURVEYOR'S OFFICE

State Plane grid coordinates NAD83 (2011):

North: 1702828.09 East: 3066900.67 (U.S. survey feet)

Type of monument: One-inch diameter iron pin in concrete

Depth: Flush with adjacent road surface

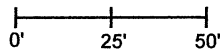
Indiana tie card references:

IN02_T17NR2W07_72 IN02_T17NR2W08_80

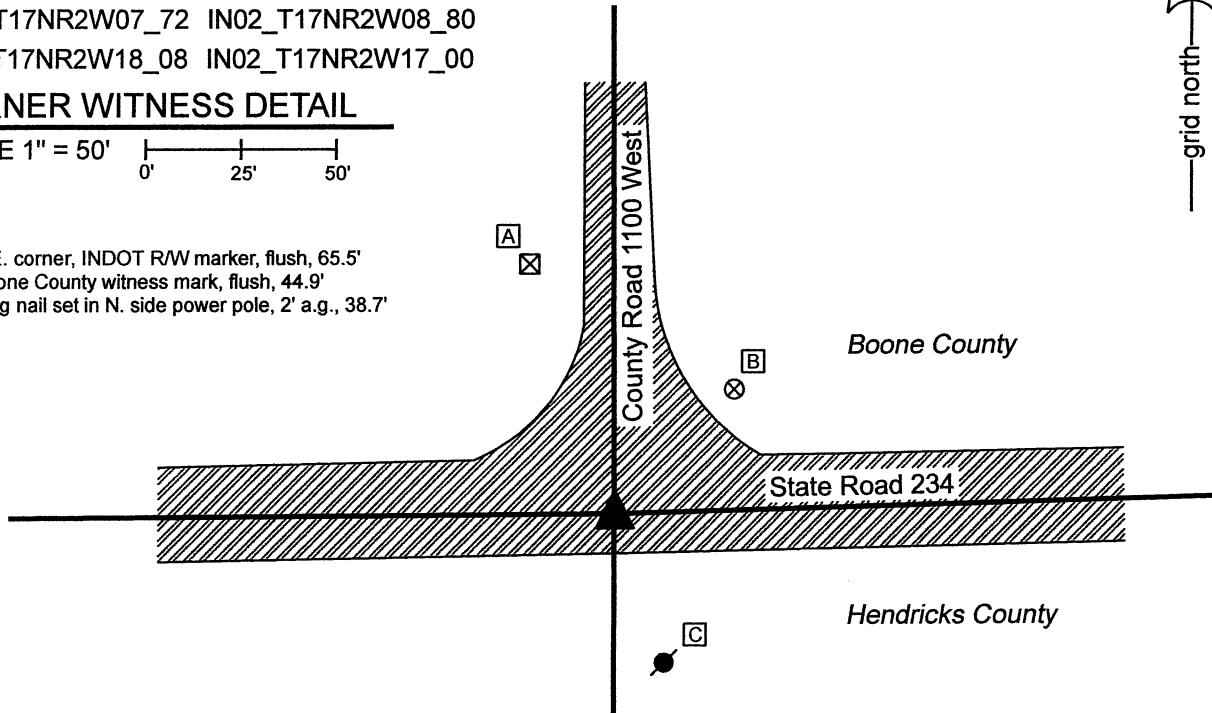
IN02_T17NR2W18_08 IN02_T17NR2W17_00

CORNER WITNESS DETAIL

SCALE 1" = 50'



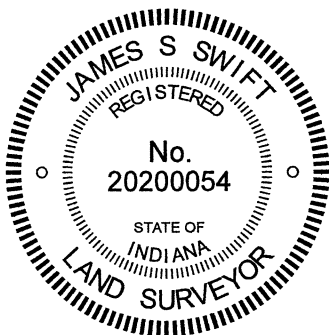
- A - S.E. corner, INDOT R/W marker, flush, 65.5'
- B - Boone County witness mark, flush, 44.9'
- C - Mag nail set in N. side power pole, 2' a.g., 38.7'



The iron pin in concrete was found and held as marking the corner.

No specific descriptions of this corner were found in the BCS Surveyor's Record beyond the original establishment of the corner as a wood post in 1820. No recent BCS tie cards were found referencing the corner.

The plans for State Road 234, being Proj. No. WPSS and MS-431, Indiana State Highway Commission, S.R. 43 - Jamestown Road (1936) show a boat spike buried 3" at P.I. Station 688+10.29. These plans do not specifically call out the P.I. as a section corner, but do show it in line with the state road centerline to the east and west and in-line with the north-south county road centerline, with the call of Section Line along the center of the north-south county road. The 1-inch diameter iron pin in concrete appears to be a typical INDOT section corner monument but no information was provided by INDOT as to when this specific monument was set. A full route survey was not performed to determine the precise station of the monument, but it is noted the distances between this monument and other similar monuments found along this stretch of road match the computed distances between stations shown on the plans within less than 0.5 foot. No excavation was performed at this corner as it falls in a state road. The iron pin in concrete was held as marking the corner.



Kenneth E. Hedge
 Kenneth E. Hedge, County Surveyor

James S. Swift
 James S. Swift, IN LS 20200054
 June 23, 2021

Jackson Township
Boone County

Eel River Township
Hendricks County

Section 7 T17N, R2W	Section 8 T17N, R2W
Section 18 T17N, R2W	Section 17 T17N, R2W