

# SECTION CORNER RECORD

SE 100-000

## BOONE COUNTY SURVEYOR'S OFFICE

State Plane grid coordinates NAD83 (CORS96):

Corner 1: North: 1740288.14 East: 3124864.58 (U.S. survey feet)

Corner 2: North: 1740489.40 East: 3124863.85 (U.S. survey feet)

Type of monument:

Corner 1: Harrison, 4" disk 'Section Corner' (3 inches above adjacent ground)

Corner 2: 36" length, 5/8 inch rebar with metal cap stamped 'Boone County Surveyor' (flush)

Indiana tie card references:

IN02\_T18NR1W01\_80 IN02\_T18NR1E06\_72

IN02\_T18NR1W12\_08 IN02\_T18NR1W07\_00

### CORNER WITNESS DETAIL

SCALE 1" = 50'



The corners fall in an area of tilled ground where no reliable witness marks are available.

The harrison monument at corner 1 was set in place of a rebar bearing a plastic cap stamped "Weihe Engr 0012." The rebar at corner 2 was set on the range line at a distance of 201.26 feet north of corner 1, which position is also at the east edge of the former position of an old wood corner post. A survey by Woolpert recorded in Survey Book 2, pages 12-13, in the Boone County Recorder's Office shows corner 2 as being monumented by a stone and shows no monument found at corner 1. The survey states that the distance between the two corners was computed based on an index factor of 1.0031 used to adjust the original closing distance of 304 links (200.64 feet). In the spring of 2012 the capped rebar was found ostensibly marking corner 1 and various evidence was found in the vicinity of corner 2, including the base of an old wood corner post and several rocks. None of the rocks were positively identifiable as a section corner stone. It was not clear which stone may have been held for the Woolpert survey and it appeared that some disturbance may have taken place since that survey was performed in 1995. It was observed that by holding the rebar as corner 1 and placing corner 2 on the range line (defined by corner 1 and the standard corner 1/2 mile north) at the indexed distance of 201.26 feet reported on the Woolpert survey, corner 2 would fall at the east edge of the found remains of the old corner post. These positions both fit well with the Woolpert survey relative to other corners shown on that survey.

In the fall of 2012 the fence line and tree line marking the lines to the north and east of corner 2 were removed by the current farmer for agricultural purposes. The various rocks and post at or near corner 2 were removed and a steel post was set in the position of the old wood corner post. After this work was completed, the two corners were monumented by Boone County Surveyor's Office. At corner 1 the rebar was removed and replaced with a harrison monument in the same position. At corner 2 a 36 inch length of 5/8 inch diameter rebar was set and capped with a metal cap stamped 'Boone County Surveyor.' This monument is 0.7 foot east of the steel post which was set in the position of the old wood corner post.



②

- ① S.E. Corner, Section 1  
N.E. Corner, Section 12  
T 18 N, R 1 W
- ② S.W. Corner, Section 6  
N.W. Corner, Section 7  
T 18 N, R 1 E

Distance between monuments: 201.26'  
Record closing = 304 links (200.64')

①

Center Township

Section 1 T18N, R1W	Section 6 T18N, R1E
Section 12 T18N, R1W	Section 7 T18N, R1E



*Kenneth E. Hedge*  
Kenneth E. Hedge, County Surveyor

*James S. Swift*  
James S. Swift, IN LS 20200054  
April 9, 2013

# SECTION CORNER RECORD

SE 100-050

## BOONE COUNTY SURVEYOR'S OFFICE

State Plane grid coordinates NAD83 (CORS96):

North: 1740492.65 East: 3127210.53 (U.S. survey feet)

Type of monument: Harrison, 4" disk 'Section Corner'

Depth: four inches above adjacent tilled ground.

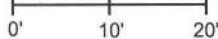
Indiana tie card references:

IN02\_T18NR1E06\_76

IN02\_T18NR1E07\_04

### CORNER WITNESS DETAIL

SCALE 1" = 20'



The harrison monument falls within an area of tilled ground. The only available reference mark is a brick catch basin, as shown below.

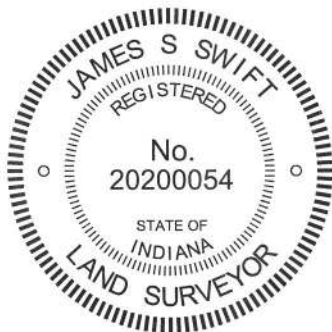
○ Brick catch basin  
11.2' NNE of the harrison monument

The harrison monument was set in place of a stone found.

A BCS record of November 8, 1912 states Re-est. from stump of S. Ash, three rocks, one 5,4,2 one 9,7,5 top one 10,9,7 +."

In the spring of 2012 a wood corner post was found with fence to the north and south along with evidence of fence cut off to the east and west. In the fall of 2012 the north-south fence line was removed for agricultural purposes by the current farmer. The portion of the corner post which had been above ground was removed and the post was broken off below ground level. After this occurred, the base of the post was found using the coordinates determined when the top of the post was still present and visible. On December 6, 2012 excavation revealed all three of the stones described in the 1912 record at the northwest edge of the remains of the base of the post. The top rock was askew, but the lower two rocks appeared to be undisturbed. The rocks were removed and a harrison monument was set in place of the lower two rocks. The monument was witnessed with a steel post and an orange fiberglass lathe. While the monument is amidst tilled field, it appears to be close enough to an existing brick catch basin to be out of the way of farming practices.

This corner was originally set as a wood post in June, 1820.



*Kenneth E. Hedge*  
Kenneth E. Hedge, County Surveyor

*James S. Swift*  
James S. Swift, IN LS 20200054

April 3, 2013

Center Twp.

Section 6  
T18N, R1E

Section 7  
T18N, R1E

PHOTOGRAPHIC DOCUMENTATION

Date of photography: April 13, Dec. 6, Dec. 13, 2012

The old corner post as found in April 2012.



The base of the corner post as found and uncovered in December 2012.



The post and the three stones described in the 1912 record, removed from the ground.



The section of plastic storm pipe set in the hole from which the three stones were excavated.



The harrison monument set within the concrete filled piece of storm pipe, View from the N.E.



View from the NNW, looking across the brick catch basin (covered with boards) and towards the harrison monument and witness lathe.



For details and documentation, refer to related sheet "Section Corner Record."

# SECTION CORNER RECORD

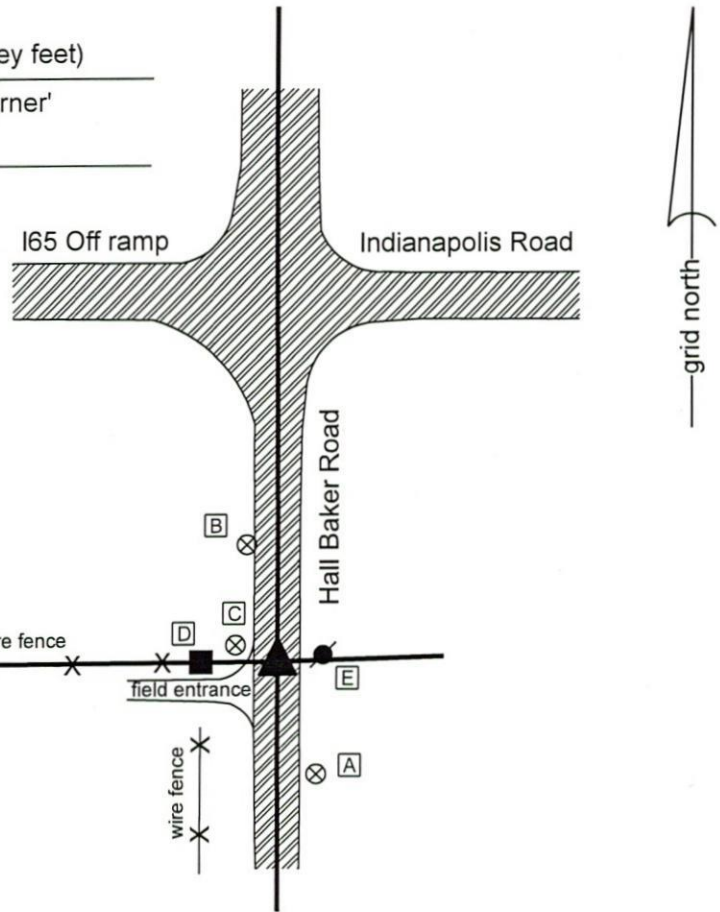
# SE 100-100

## BOONE COUNTY SURVEYOR'S OFFICE

State Plane grid coordinates NAD83 (2011):  
North: 1740513.31 East: 3129871.03 (U.S. survey feet)

Type of monument: Harrison, 4" disk 'Section Corner'  
Depth: One inch below adjacent road surface

Indiana tie card references:  
IN02\_T18NR1E06\_80 IN02\_T18NR1E05\_72  
IN02\_T18NR1E07\_08 IN02\_T18NR1E08\_00



### CORNER WITNESS DETAIL

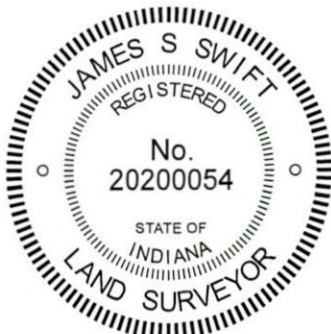
SCALE 1" = 100'

- A - Boone County witness mark, flush, 61.5'
- B - Boone County witness mark, flush, 62.7'
- C - Boone County witness mark, flush, 23.4'
- D - Mag nail set in W. side power pole, 2' a.g., 23.7'
- E - Mag nail set in E side wood corner post 3' a.g., 39.9'

Boone County witness mark is a 3/8" diameter x 2' long rebar bearing a metal cap stamped "Boone County Witness Point."

The Harrison Monument was set at a calculated position. A BCS record dated October 14, 1868 states, with respect to this corner, "Reestablished from Beech B.T. Set Rock 12.8.10 marked + with Oak stake under it." A BCS record dated June 13, 20 & 21, 1881 references the above entry and shows a distance between the corner and the quarter corner to the south (see BCS Corner SE 150-100). A BCS tie card with no date which appears to date from the late 1960s or early 1970s shows the corner and states "No stone found." A survey recorded in Survey Book 12, pages 30-31 shows the corner as a PK nail found, stating "a pk nail found, location indicated by the Highway Plans for Lebanon US 52 bypass." A survey recorded in Survey Book 12, pages 82-83 shows the corner as an iron rod in the same apparent position as is shown on the survey in SB 12, pages 30-31.

This corner was studied carefully during the summer of 2019 and excavated on September 17, 2019. Prior to excavation, numerous metal readings had been detected and it was apparent that previous surveyors had dug small holes in the road in search of monuments. Manual excavation at the positions of the metal readings demonstrated that the readings were coming from pieces of wire found several inches below the surface of the road. No PK nail, iron pin or other specific survey monuments were found marking the corner prior to excavation. The position of the corner as shown on the survey in SB 30, p.30-31 was computed with respect to monumentation found at or near the south quarter corner, east quarter corner and center quarter corner of section 6. The position was computed with an uncertainty of approximately 0.5 foot. The computed position fell in the center of the north-south roadway at the easterly prolongation of an old fence to the west providing evidence of the south line of the southeast quarter of section 6. A mag spike was set at this position to temporarily mark the corner on July 23, 2019. It is noted that this position for the corner also agrees within one foot of a position computed with respect to deed references to the south line of the southwest quarter of section 5 for descriptions of the Boone County farm properties in the southwest quarter of section 5. On September 15, 2019, excavation of an area extending 3 feet north, 2 feet south and 17 inches east and 17 inches west of the computed position / mag spike revealed no further evidence of the corner. Neither PK nail nor iron rod were found. Excavation did reveal that the aforementioned wire pieces causing metal readings were part of a wire mesh which appears to be incorporated in concrete. The wire and concrete layer was found at 4 inches deep. It is noted that this specific part of the road bed is in approximately three to four feet of fill material. Given the presence of the concrete and the apparent depth of the fill, no further excavation was performed. The computed position of the corner was held and a Harrison monument was set at this position on September 17, 2019. It is observed that this position fits well with local evidence in the form of the old fence to the west and north-south roadway and also fits well with the distances reported in the 1881 BCS entry with respect to the corner to the south.



*Kenneth E. Hedge*  
Kenneth E. Hedge, County Surveyor

*James S. Swift*  
James S. Swift, IN LS 20200054  
February 5, 2020

### Center Township

Section 6 T18N, R1E	Section 5 T18N, R1E
Section 7 T18N, R1E	Section 8 T18N, R1E

# SECTION CORNER RECORD

## BOONE COUNTY SURVEYOR'S OFFICE

SE 150-100

State Plane grid coordinates NAD83 (NSRS 2007):

North: 1737853.10 East: 3129879.78 (U.S. survey feet)

Type of monument: Harrison, 4" disk 'Section Corner'

Depth: One inch below adjacent road surface

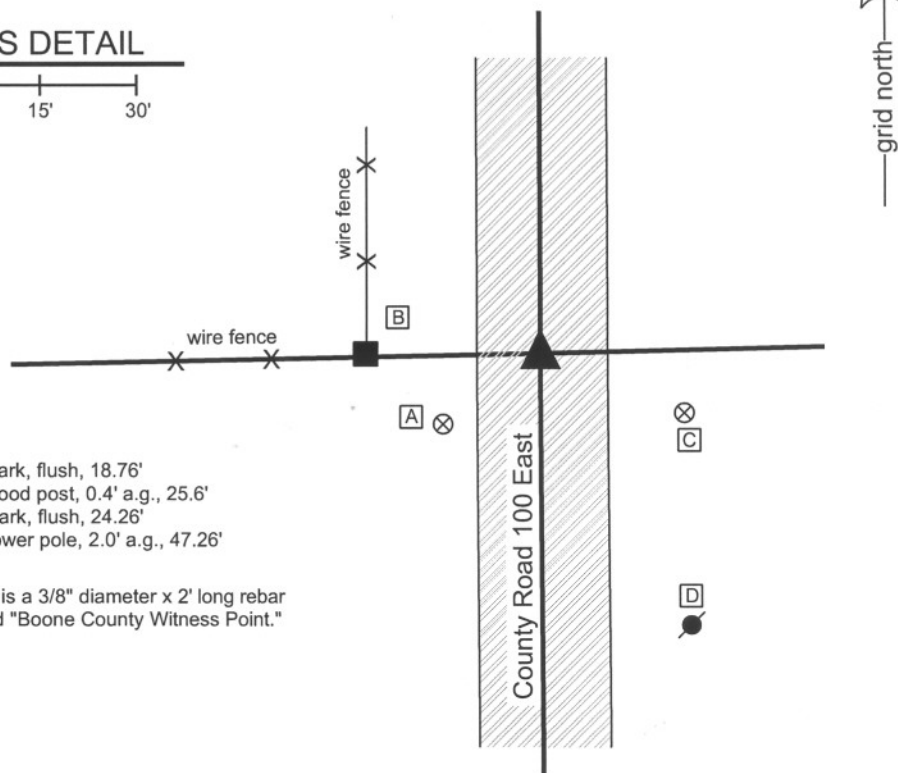
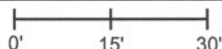
Indiana tie card references:

IN02\_T18NR1E07\_44

IN02\_T18NR1E08\_36

### CORNER WITNESS DETAIL

SCALE 1" = 30'



- A - Boone County witness mark, flush, 18.76'
- B - Mag nail set in E. side, wood post, 0.4' a.g., 25.6'
- C - Boone County witness mark, flush, 24.26'
- D - Mag nail set in N. side power pole, 2.0' a.g., 47.26'

Boone County witness mark is a 3/8" diameter x 2' long rebar bearing a metal cap stamped "Boone County Witness Point."

The harrison monument was set over a stone found.

A BCS record of June 13, 20, 21, 1881 states "Set Rock 12,10,10 marked +." A BCS tie card dated April 29, 1992 shows the corner as a railroad spike found. This corner was excavated on July 21, 2009. Prior to excavation a railroad spike was found 6 inches below grade, matching references on the 1992 tie card. Excavation revealed a stone found at 15 inches deep. This stone was of a soft material and was found to be entirely within the gravel portion of the road bed and generally unstable. The stone was removed. The record stone was found directly below at 18 inches deep. With 8 inches of the stone exposed, it measured 10 inches N-S by 10 inches E-W. The stone is fully embedded in the clay layer below the road bed and a vague etched "+" is visible on the top towards the south edge of the stone. The harrison monument was set directly over the etched "+". The railroad spike, removed during excavation, was 0.4 foot north and 0.4 foot west of this point.

This corner was originally established as a wood post in June, 1820.



*Kenneth E. Hedge*  
Kenneth E. Hedge, County Surveyor

*James S. Swift*  
James S. Swift, IN LS 20200054  
July 14, 2010

Center Township

Section 7 T18N, R1E	Section 8 T18N, R1E
------------------------	------------------------

PHOTOGRAPHIC DOCUMENTATION

Date of photography: July 21, 2009

The top stone, found in the fill material.



The lower stone, described in the 1881 record.  
View from above and west.



The lower stone. View from the above and north.



The lower stone, washed. The etched mark is visible as a dark area on the top of the rock.



For details and documentation, refer to related sheet "Section Corner Record."

# SECTION CORNER RECORD

SE 200-000

## BOONE COUNTY SURVEYOR'S OFFICE

State Plane grid coordinates NAD83 (2011):

North: 1734990.59 East: 3124895.92 (U.S. survey feet)

North: 1735188.75 East: 3129897.92 (U.S. survey feet)

Type of monument: Harrison, 4" disk 'Section Corner'

Depth: One inch below adjacent road surface

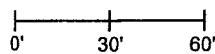
Indiana tie card references:

IN02\_T18NR1W12\_80 IN02\_T18NR1E07\_72

IN02\_T18NR1W13\_08 IN02\_T18NR1E18\_00

### CORNER WITNESS DETAIL

SCALE 1" = 60'

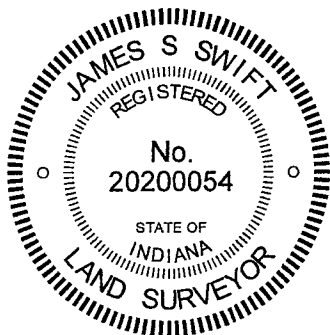
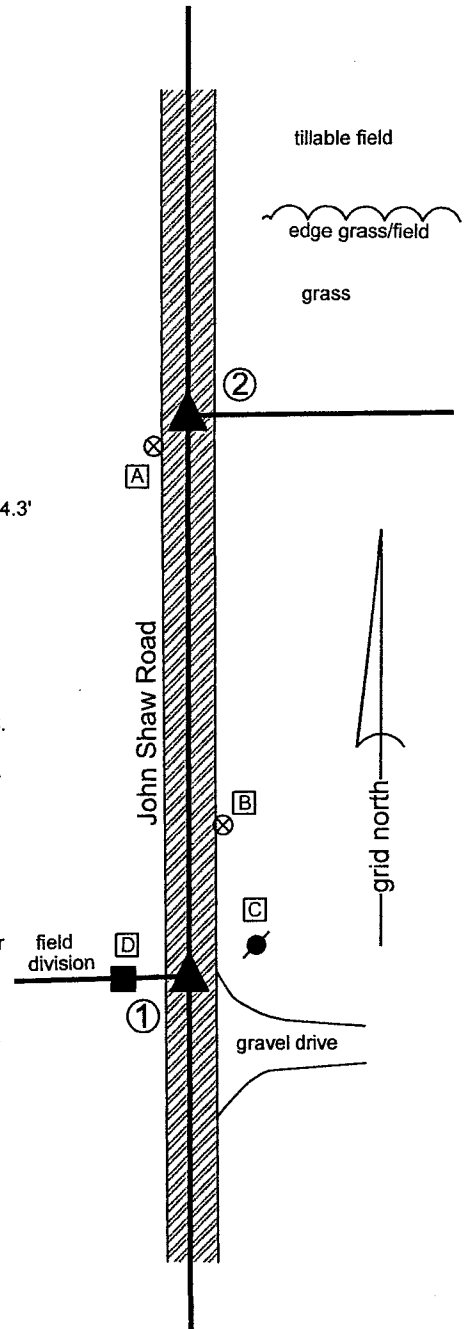


- A - Boone County witness mark, flush  
165.1' to corner 1, 14.5' to corner 2
- B - Boone County witness mark, flush  
48.1' to corner 1, 127.9' to corner 2
- C - Mag nail set in W. side power pole, 2' a.g.  
21.3' to corner 1, 165.4' to corner 2
- D - Mag nail set in E. side wood end post, 2' a.g.  
20.0' feet to corner 1, 175.7' to corner 2

- ① S.E. Corner, Section 12  
N.E. Corner, Section 13  
T 18 N, R 1 W
- ② S.W. Corner, Section 7  
N.W. Corner, Section 18  
T 18 N, R 1 E

Distance between monuments: 174.3'  
Original federal closing distance:  
264 links = 174.24'

The Harrison monument at Corner 1 was set in place of a vertical section of railroad rail found. The Harrison monument at Corner 2 was set adjacent to the position of a rebar found. A BCS record of May 23, 1866 states, with respect to Corner 1, "Reest. found by measure 264 links S. of cor. of Sects 7 & 18 found stumps of trees. Rock 22.12.9 + on W. side. No specific descriptions of Corner 2 were found in the BCS Surveyor's Record beyond the original establishment of the corner as a wood post in 1820, 264 links N. of the wood post set at Corner 1 in 1819. A BCS tie card dated February 26, 1992 shows Corner 1 as a railroad rail found. Excavation was performed at Corner 1 on May 6, 2013. Prior to excavation, a nail was found at 4 inches below grade in the center of the road, in-line with a wood post on the west side of the road. Excavation revealed a vertical section of railroad rail found at 7 inches deep, directly below the nail. Further excavation to 2.5 feet north, west and south and 4 feet east of the rail did not reveal more evidence of the corner. The stone called in the 1866 record was not found. A possible explanation for this may be that the stone was found and removed when the rail was set. No record was found to indicate when the rail was set, though it was most likely set in the late 1960s or early 1970s and it is known that BCS crews of that era often removed stones, if found, and replaced them with rails. Another explanation may be that, due to mixture of sand and rocky material found at the bottom of the road bed, this area appears that it was wet during the wagon road era and the stone may have been removed when the road bed was built up. The rail was accepted as the best available evidence of Corner 1 and replaced with a Harrison monument in the same position on May 7, 2013, Excavation at Corner 2 on May 7, 2013 revealed a one-foot length of 5/8 inch rebar at 6 inches deep and a fragment of wood stake found near the bottom of the road bed. The fragments of the stake were ill defined with respect to precise position. Excavation of a five-foot square area centered on the rebar did not reveal further evidence of this corner. The rebar, being at the 264 link offset distance from the rail at Corner 1, was held to define the north-south dimension of Corner 2. A mag spike was set in place of the rebar temporarily on May 7, 2013. This spike was replaced with a Harrison monument set on the range line as defined by Corner 1 and the east quarter corner of section 12 (see BCS Corner SW 150-000) on July 14, 2016. This position is 0.1 foot west of the position of the rebar originally found. Corner 1 was originally set as a wood post in 1819. Corner 2 was originally set as a wood post in 1820.



*Kenneth E. Hedge*  
Kenneth E. Hedge, County Surveyor

*James S. Swift*  
James S. Swift, IN LS 20200054

March 9, 2021

Center Township

Section 12 T18N, R1W	Section 7 T18N, R1E
Section 13 T18N, R1W	Section 18 T18N, R1E

# SECTION CORNER RECORD

SE 200-050

## BOONE COUNTY SURVEYOR'S OFFICE

State Plane grid coordinates NAD83 (2011):

North: 1735174.22 East: 3127241.77 (U.S. survey feet)

Type of monument: Harrison, 4" disk 'Section Corner'

Depth: Four inches above surrounding ground

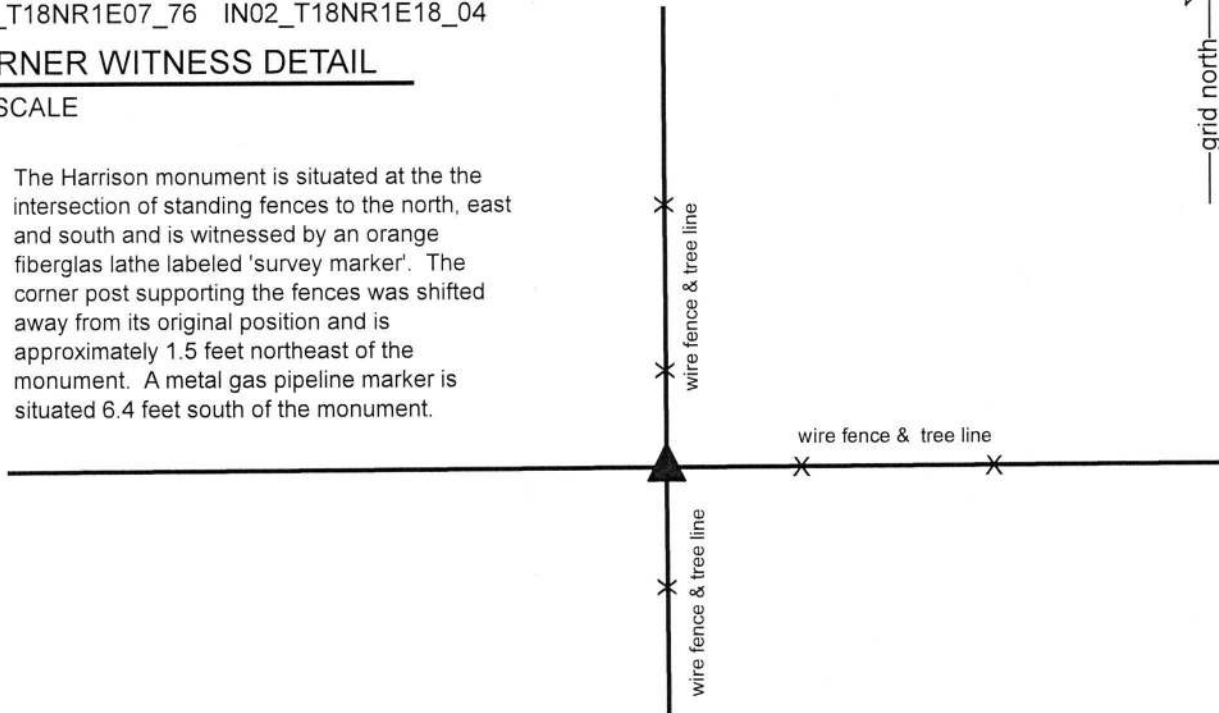
Indiana tie card references:

IN02\_T18NR1E07\_76 IN02\_T18NR1E18\_04

### CORNER WITNESS DETAIL

NO SCALE

The Harrison monument is situated at the the intersection of standing fences to the north, east and south and is witnessed by an orange fiberglas lathe labeled 'survey marker'. The corner post supporting the fences was shifted away from its original position and is approximately 1.5 feet northeast of the monument. A metal gas pipeline marker is situated 6.4 feet south of the monument.

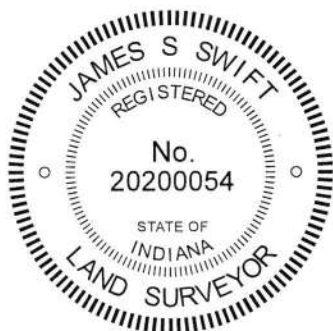


The Harrison monument was set in place of the base of a wood corner post found.

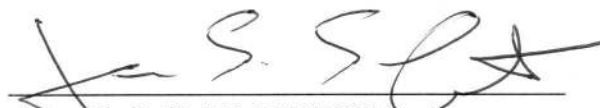
A BCS record dated November 8, 1912, states, with respect to this corner, 'Found rock at corner + root of Oak here.' No recent BCS tie cards were found referencing this corner.

Excavation was performed at this corner on September 24, 2019. Prior to excavation, an ancient wood corner post with fence to the north, south and east was found providing evidence of the corner. The post fit within 5 feet of a calculated position for the corner based the relative positions of the section corners to the east and west as computed by single proportional method with respect to the distances reported by the original federal surveyors. Numerous rocks were found in the immediate vicinity of the corner, most lying in a loose pile to the northeast of the post. Probing and manual excavation around the post revealed no stones which could be positively identified as representing purposely set corner stones. Evidence of a gas pipeline was observed immediatly south of the corner. The standing fencing to the south of the post is newer than the fencing to the east and north, presumably due to the old fence being cut in association with the installation of the gas line. The old fence to the south is yet attached to the post, though cut-off a few inches from the post. It does not appear that the gas line installation disturbed the ancient corner post. The post was accepted as providing the best available evidence of the corner. The above ground portion of the post was rotted at ground level and separated from the base of the post, which remains in the ground. Several wires were cut at the bottom of the fence and the above ground portion of the post was shifted approximately 1.5 foot to the northeast, though left in a condition in which it continued to stand vertically, supporting the attached fencing. The base of the post, in-ground, was exposed to approximately two feet deep. The exposed portion of the base of the post was encased in concrete and a Harrison monument was set directly over the base of the post.

This corner was originally established as a wood post in 1820.



  
Kenneth E. Hedge, County Surveyor

  
James S. Swift, IN LS 20200054  
October 15, 2019

Center  
Township

Section 7  
T18N, R1E

Section 18  
T18N, R1E



# SECTION CORNER RECORD

# SE 200-100

## BOONE COUNTY SURVEYOR'S OFFICE

State Plane grid coordinates NAD83 (NSRS 2007):

North: 1735188.75 East: 3129897.92 (U.S. survey feet)

Type of monument: Harrison, 4" disk 'Section Corner'

Depth: One inch below adjacent road surface

Indiana tie card references:

IN02\_T18NR1E07\_80 IN02\_T18NR1E08\_72

IN02\_T18NR1E17\_00 IN02\_T18NR1E18\_08

### CORNER WITNESS DETAIL

SCALE 1" = 40'

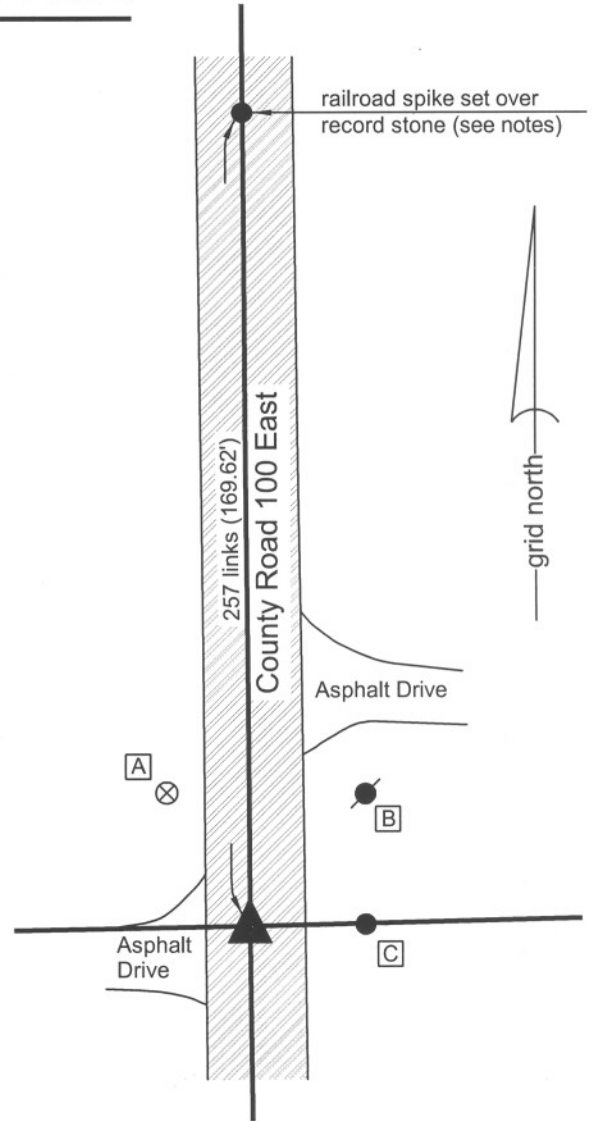


A - Boone County witness mark, flush, 32.64'

B - Mag nail set in S. side power pole, 2.0' a.g., 35.0'

C - 5/8" capped rebar found (Carter), flush, 23.96'

Boone County witness mark is a 3/8" diameter x 2' long rebar bearing a metal cap stamped "Boone County Witness Point."



The harrison monument was set in a position calculated upon the relative positions of two stones to the north.

This corner is not specifically described in the BCS "Surveyor's Record." However, sufficient information exists in the record to reconstruct the position of the corner relative to two stones found. A BCS record of February 12 mentions an intermediate corner (corner 4 of section 8) north of the subject corner. This corner is also referenced as a terminal point for measurements in a BCS record of March 13, 1871. A BCS record of June 13, 20, 21, 1881 describes the stone set at the quarter corner one-half mile to the north (corner H of section 8.) and records measurements from said corner (H) to the aforementioned intermediate corner (4) and to the subject corner (corner G of section 8.) It also records a measurement from the intermediate corner (4) to the subject corner (G). The record stone at corner H was found and a stone was found at corner 4. No stone was found at the subject corner (G). The distance between corners H and 4 match the distance recorded in 1881 of 37.80 chains to within one tenth of a foot. The position of the subject corner was established at the prolongation of the line between the stones at corners H and 4 at the record distance of 2.57 chains (169.62 feet) from corner 4. Excavation at this position revealed no further evidence. The harrison monument was set at the calculated position for the corner. This corner was originally established as a wood post in July, 1821.



*Kenneth E. Hedge*  
 Kenneth E. Hedge, County Surveyor

*James S. Swift*  
 James S. Swift, IN LS 20200054  
 July 14, 2010

Center Township

Section 7 T18N, R1E	Section 8 T18N, R1E
Section 18 T18N, R1E	Section 17 T18N, R1E