

# SECTION CORNER RECORD

SW 750-1100

## BOONE COUNTY SURVEYOR'S OFFICE

State Plane grid coordinates NAD83 (2011):

North: 1705465.96 East: 3066888.45 (U.S. survey feet)

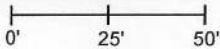
Type of monument: Harrison, 4" disk 'Section Corner'

Depth: One inch below adjacent road surface

Indiana tie card references:

IN02\_T17NR2W07\_44 IN02\_T17NR2W08\_36

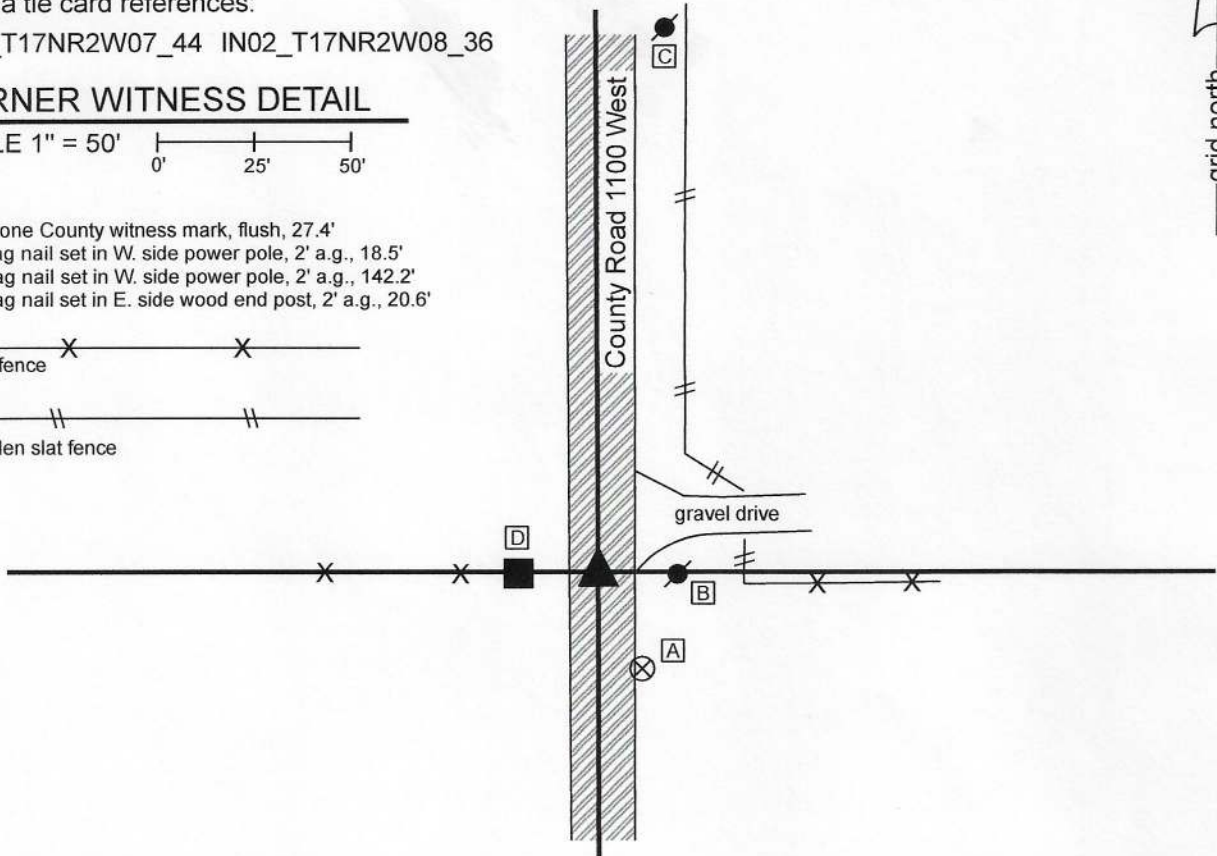
### CORNER WITNESS DETAIL

SCALE 1" = 50' 

- A - Boone County witness mark, flush, 27.4'
- B - Mag nail set in W. side power pole, 2' a.g., 18.5'
- C - Mag nail set in W. side power pole, 2' a.g., 142.2'
- D - Mag nail set in E. side wood end post, 2' a.g., 20.6'

 - wire fence

 - wooden slat fence



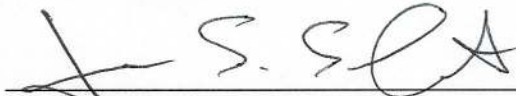
The Harrison monument was set over a stone found.

No specific descriptions of this corner were found in the BCS Surveyor's Record nor were any recent BCS tie cards found referencing the corner. This corner was excavated on October 22, 2020. Prior to excavation, a railroad spike was found at 1 inch deep in the center of the road, in-line with an old fence to the west and an ancient corner post to the east. It is noted that a newer fence to the east is south of the other observed evidence of the corner. Excavation revealed a stone found at 18 inches deep, slightly north and west of the railroad spike. The stone was vertical, oriented in cardinal directions and embedded in the clay layer below the road bed. With the top 9 exposed, the stone measured 5 inches N-S by 7 inches E-W. The full height of the stone was not measured, though it was observed that it was not likely to be much taller than the exposed 9 inches, based on the stability of the rock with that much exposed. No specific marks were observed on the stone. The characteristics of the stone, being vertical, embedded in the clay, and oriented in cardinal directions, match the characteristics of other stones found marking sections corners throughout the county. The stone was held as marking the corner. It was left in place and a Harrison monument was set directly over the top, center of the stone. The railroad spike, removed during excavation, had been 0.2 foot south and 0.5 foot east of the top, center of the stone.

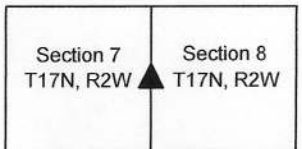
This corner was originally established as a wood post in 1820.



  
 Kenneth E. Hedge, County Surveyor

  
 James S. Swift, IN LS 20200054  
 October 28, 2020

Jackson Township



# SECTION CORNER RECORD

SW 700-1150

## BOONE COUNTY SURVEYOR'S OFFICE

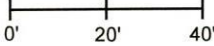
State Plane grid coordinates NAD83 (2011):  
North: 1708116.46 East: 3064217.08 (U.S. survey feet)

Type of monument: Harrison, 4" disk 'Section Corner'  
Depth: Six inches below adjacent road surface

Indiana tie card references:  
IN02\_T17NR2W07\_04 IN02\_T17NR2W06\_76

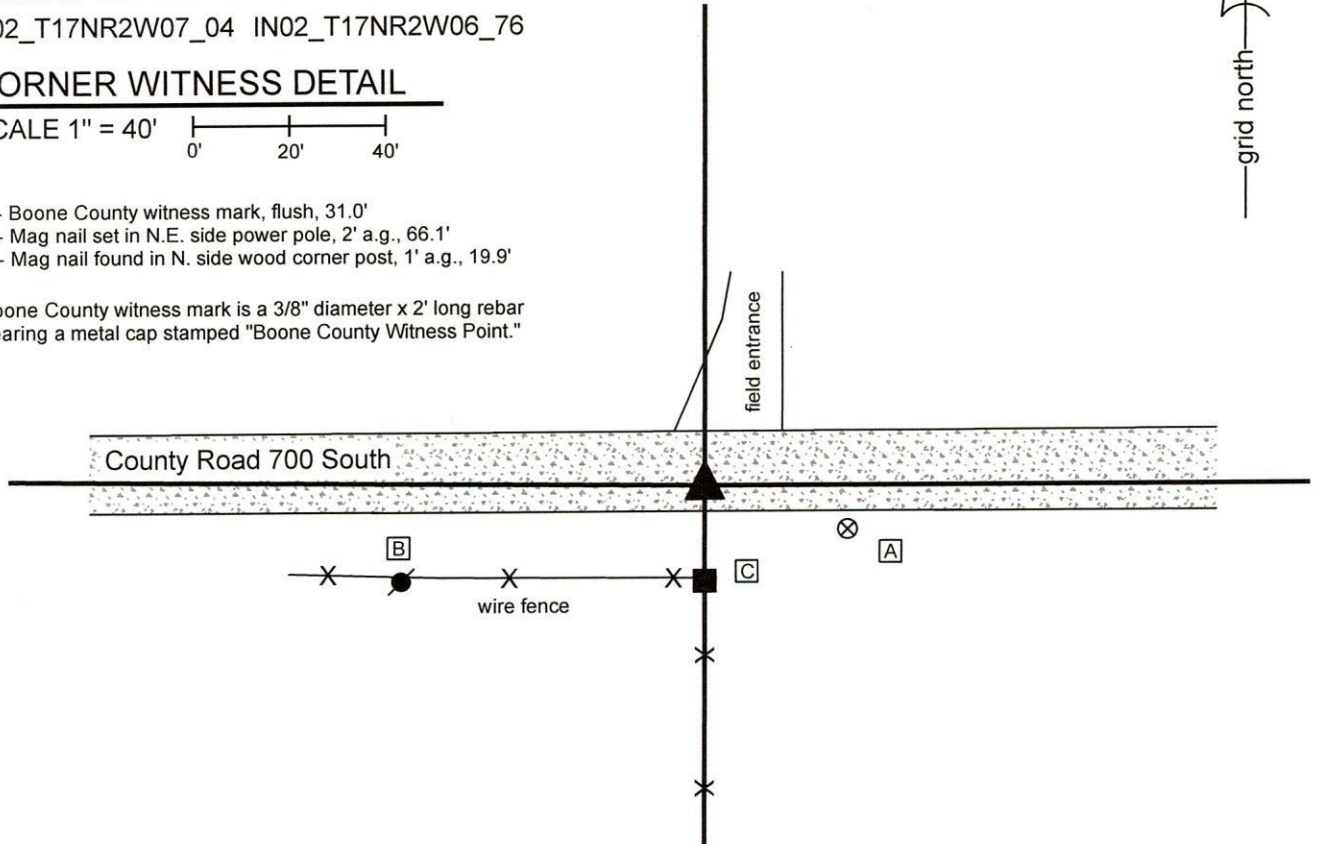
### CORNER WITNESS DETAIL

SCALE 1" = 40'

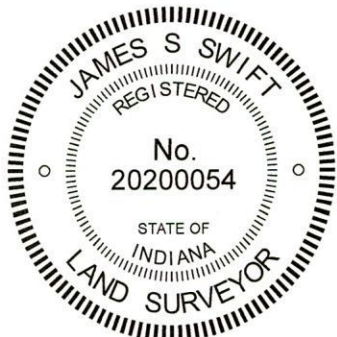


- A - Boone County witness mark, flush, 31.0'
- B - Mag nail set in N.E. side power pole, 2' a.g., 66.1'
- C - Mag nail found in N. side wood corner post, 1' a.g., 19.9'


Boone County witness mark is a 3/8" diameter x 2' long rebar bearing a metal cap stamped "Boone County Witness Point."



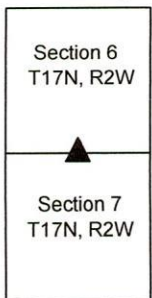
The Harrison Monument was set in place of a stone found. A BCS record of February, 1871 states, with respect to this corner, "Reest. from S.W. Beech. Set a Rock 24.16.9 +." A BCS tie card dated December 9, 1994 shows the corner as "stone flush w/ road." This corner was excavated on March 4, 2020. Prior to excavation, a Harrison monument was found at 6 inches below grade. Though Harrison monuments are typically set by the County Surveyor's Office or representatives thereof, no information was found indicating the source of this monument and it was found to be north of the position of the corner shown by the remaining distance ties shown on the 1994 tie card. Excavation revealed a stone found near the surface of the road, in agreement with the 1994 tie card. The stone measured 18 inches E-W by 10 inches N-S by 18 inches tall and was partially embedded in the clay layer below the road bed. This is not the same stone described in the 1871 record. Excavation of an area extending approximately 1 foot south, 4 feet north, 1 foot east and 3 feet west of the stone revealed no further evidence of the corner. The stone was held as marking the corner. The stone was removed from the road bed and a Harrison monument was set in the position of the top, center of the stone as originally found. This is in close agreement with the position shown on the 1994 tie card. The Harrison monument found prior to excavation was removed during excavation. This monument had been 2.4 feet north and 0.6 foot west of the position held as the corner. This corner was originally established as a wood post in 1820.



  
Kenneth E. Hedge, County Surveyor

  
James S. Swift, IN LS 20200054  
March 17, 2020

Jackson Township





# SECTION CORNER RECORD

# SW 750-1200

## BOONE COUNTY SURVEYOR'S OFFICE

State Plane grid coordinates NAD83 (2011):

Corner 1: North: 1705608.49 East: 3061553.74 (U.S. survey feet)

Corner 2: North: 1705464.72 East: 3061554.68 (U.S. survey feet)

Corner 1: 5/8" diameter rebar with aluminum cap stamped 'Montgomery County Surveyor', 14" below grade

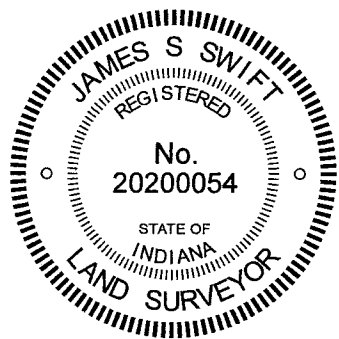
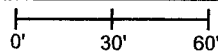
Corner 2: 5/8" diameter rebar, 24" long, with aluminum cap stamped 'Boone County Surveyor', 11" below grade

Indiana tie card references:

IN02\_T17NR2W07\_36 IN02\_T17NR3W12\_44

### CORNER WITNESS DETAIL

SCALE 1" = 60'



- ① East Quarter Corner  
Section 12, T 17 N, R 3 W  
5/8" diameter rebar found
- ② West Quarter Corner  
Section 7, T 17 N, R 2 W  
5/8" diameter rebar set  
Distance between monuments: 143.8'



Montgomery County

Boone County

trees

field

field division

field

edge of field and grass

trees

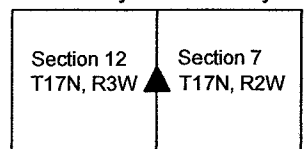
The 5/8-inch diameter rebar with metal cap stamped 'Boone County Surveyor' was set on the range line as defined by a Montgomery County rebar found at the east quarter corner of section 12, township 17 north, range 3 west and a stone found at the southeast corner of said section 12, at the east edge of the base of a wood corner post found 8 inches below grade.

No specific description this corner was found in the BCS Surveyor's Record, nor were any recent BCS tie cards found referencing the corner. A section corner dossier sheet provided by the Office of the Montgomery County Surveyor, dated May 15, 2019, shows Corner 1 as a rebar set in place of an uncapped rebar found 0.5 foot below grade. The rebar found and replaced by Montgomery County at Corner 1 is believed to have been set by this surveyor, Swift, as part of a survey recorded as Instrument 200502181 in the Office of the Montgomery County Recorder.

Corner 2 is shown as being a wood head post on a survey by Jerry L. Carter recorded as Instrument 00217725 in the Office of the Boone County Recorder. Preliminary reconnaissance at this corner did not reveal any visible evidence of Corner 2, which falls in a tilled field. The Montgomery County dossier reports similar findings. However, the position of the wood post shown on the Carter survey was computed with respect to other data shown on said survey and the base of the wood post was found at 8 inches deep, amidst the tilled field. A large rock was found 17 inches north of the base of the post and several small stones were found south and west of the post. None of these stones appeared to represent corner stones purposely set to mark the corner. It is noted that the separation between Corner 1 and Corner 2 is within approximately 3 feet of the computed separation, based on monuments found at the northwest and southwest corners of section 7 and the adjoining corners in range 3 west. It is also noted that the northwest corner of section 7 has not been firmly established as of the date of publication of this document.

The base of the wood post was accepted as the best available evidence of the corner. The specific position of the corner was established on the range line as defined by the rebar at Corner 1 and a stone at the southeast corner of section 12, T17N, R3W. This point falls at the east edge of the base of the wood post. The top portion of the base of the post was broken / sawed off from the rest of the post and a rebar was driven into the remains of the post, at the east edge of the post. A metal cap stamped 'Boone County Surveyor' was set on the rebar. This corner is not an original corner of the Public Land Survey System.

Clark Township Montgomery County	Jackson Township Boone County
---	--



Kenneth E. Hedge, County Surveyor

James S. Swift, IN LS 20200054 December 2, 2020

# SECTION CORNER RECORD

SW 800-1100

## BOONE COUNTY SURVEYOR'S OFFICE

State Plane grid coordinates NAD83 (2011):

North: 1702828.09 East: 3066900.67 (U.S. survey feet)

Type of monument: One-inch diameter iron pin in concrete

Depth: Flush with adjacent road surface

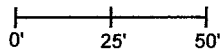
Indiana tie card references:

IN02\_T17NR2W07\_72 IN02\_T17NR2W08\_80

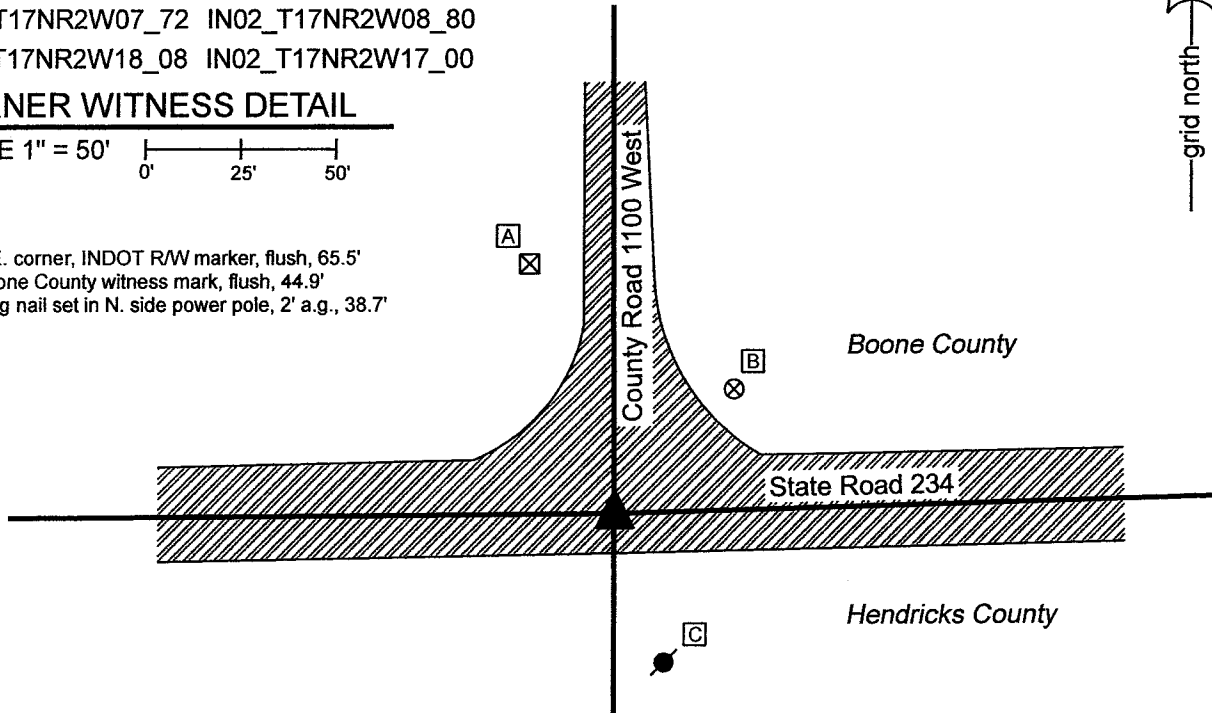
IN02\_T17NR2W18\_08 IN02\_T17NR2W17\_00

### CORNER WITNESS DETAIL

SCALE 1" = 50'



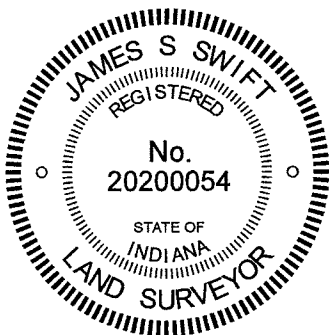
- A - S.E. corner, INDOT R/W marker, flush, 65.5'
- B - Boone County witness mark, flush, 44.9'
- C - Mag nail set in N. side power pole, 2' a.g., 38.7'



The iron pin in concrete was found and held as marking the corner.

No specific descriptions of this corner were found in the BCS Surveyor's Record beyond the original establishment of the corner as a wood post in 1820. No recent BCS tie cards were found referencing the corner.

The plans for State Road 234, being Proj. No. WPSS and MS-431, Indiana State Highway Commission, S.R. 43 - Jamestown Road (1936) show a boat spike buried 3" at P.I. Station 688+10.29. These plans do not specifically call out the P.I. as a section corner, but do show it in line with the state road centerline to the east and west and in-line with the north-south county road centerline, with the call of Section Line along the center of the north-south county road. The 1-inch diameter iron pin in concrete appears to be a typical INDOT section corner monument but no information was provided by INDOT as to when this specific monument was set. A full route survey was not performed to determine the precise station of the monument, but it is noted the distances between this monument and other similar monuments found along this stretch of road match the computed distances between stations shown on the plans within less than 0.5 foot. No excavation was performed at this corner as it falls in a state road. The iron pin in concrete was held as marking the corner.



*Kenneth E. Hedge*  
 Kenneth E. Hedge, County Surveyor

*James S. Swift*  
 James S. Swift, IN LS 20200054  
 June 23, 2021

Jackson Township  
Boone County

Eel River Township  
Hendricks County

Section 7 T17N, R2W	Section 8 T17N, R2W
Section 18 T17N, R2W	Section 17 T17N, R2W

# SECTION CORNER RECORD

SW 800-1150

## BOONE COUNTY SURVEYOR'S OFFICE

State Plane grid coordinates NAD83 (2011):

North: 1702811.95 East: 3064253.58 (U.S. survey feet)

Type of monument: Harrison, 4" disk 'Section Corner'

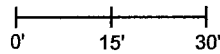
Depth: Six inches below adjacent road surface

Indiana tie card references:

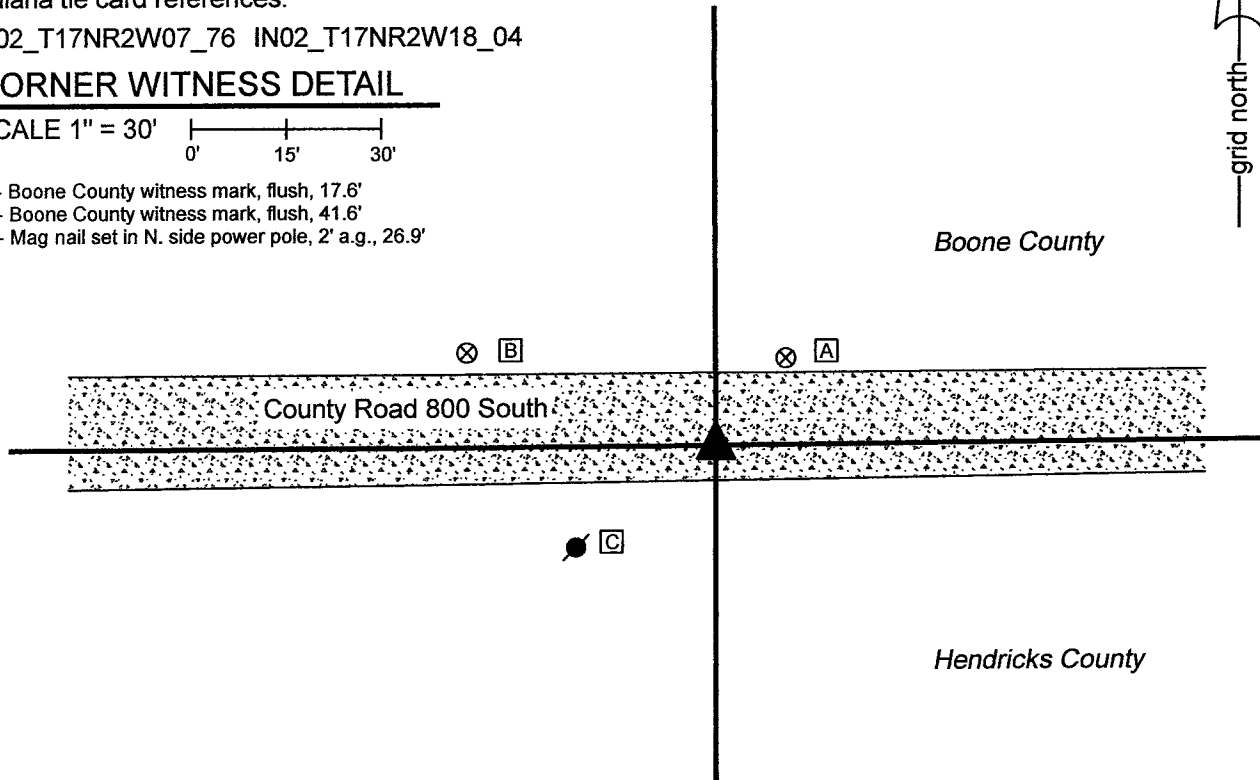
IN02\_T17NR2W07\_76 IN02\_T17NR2W18\_04

### CORNER WITNESS DETAIL

SCALE 1" = 30'



- A - Boone County witness mark, flush, 17.6'
- B - Boone County witness mark, flush, 41.6'
- C - Mag nail set in N. side power pole, 2' a.g., 26.9'

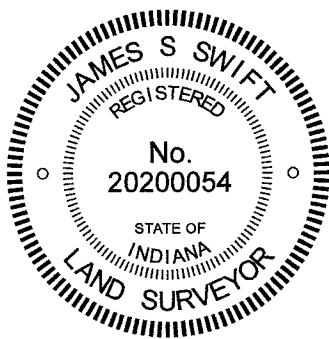


The Harrison monument was set in place of a stone found.

No specific descriptions of this corner were found in the BCS Surveyor's Record beyond the original establishment of the corner as a wood post in 1820, nor were any recent BCS tie cards found referencing this corner. Field notes provided by the Office of the Hendricks County Surveyor dated December 4, 2013 state that a Hendricks County rebar and disk were set over a stone with cut "X" found at 8 inches deep, 3 feet +/- south of the center of the county road.

This corner was excavated on March 29, 2021. The Hendricks County rebar and disk were not found but the stone with the cut "X" was found in the same position as is noted on the Hendricks County field notes. The stone was found at 3 inches deep, south of the center of the road, as noted in the field notes. The cut "X" mark was clearly visible. This mark was not an ancient chisel mark, but a more recent mark made with a power grinder, as is typically made by representatives of the Hendricks County Surveyor's Office. Evidently the older mark observed when the stone was found in 2013 was enhanced with a power grinder. The stone was too shallow to set a Harrison monument over it at an appropriate depth to avoid disruption by a road grader, hence the stone was removed. The full dimensions of the stone were 11 inches E-W by 12 inches N-S by 26 inches tall. The Hendricks County notes call it as a 9 inch by 10 inch stone, which represents the dimensions of the top of the stone, as found. The cut mark on the top, center of the stone was held as the specific position of the corner. A Harrison monument was set at 6 inches deep in the same horizontal position as the mark on the stone on March 29, 2021.

No other metal monument was found at the time of excavation, though it is noted that a railroad spike had been previously found at a position 2 feet north and 11.7 feet west of the mark on the stone.



*Kenneth E. Hedge*  
 Kenneth E. Hedge, County Surveyor

*James S. Swift*  
 James S. Swift, IN LS 20200054  
 April 7, 2021

Jackson Township  
Boone County

Section 7  
T17N, R2W

Eel River Township  
Hendricks County

Section 18  
T17N, R2W

# SECTION CORNER RECORD

# SW 800-1200

## BOONE COUNTY SURVEYOR'S OFFICE

State Plane grid coordinates NAD83 (2011):

Corner 1: North: 1702953.39 East: 3061571.23 (U.S. survey feet)

Corner 2: North: 1702800.46 East: 3061571.84 (U.S. survey feet)

Type of monuments: Stones with etched X mark

Depth: Three to four inches below adjacent ground

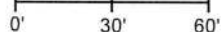
Indiana tie card references:

IN02\_T17NR3W12\_80 IN02\_T17NR2W07\_72

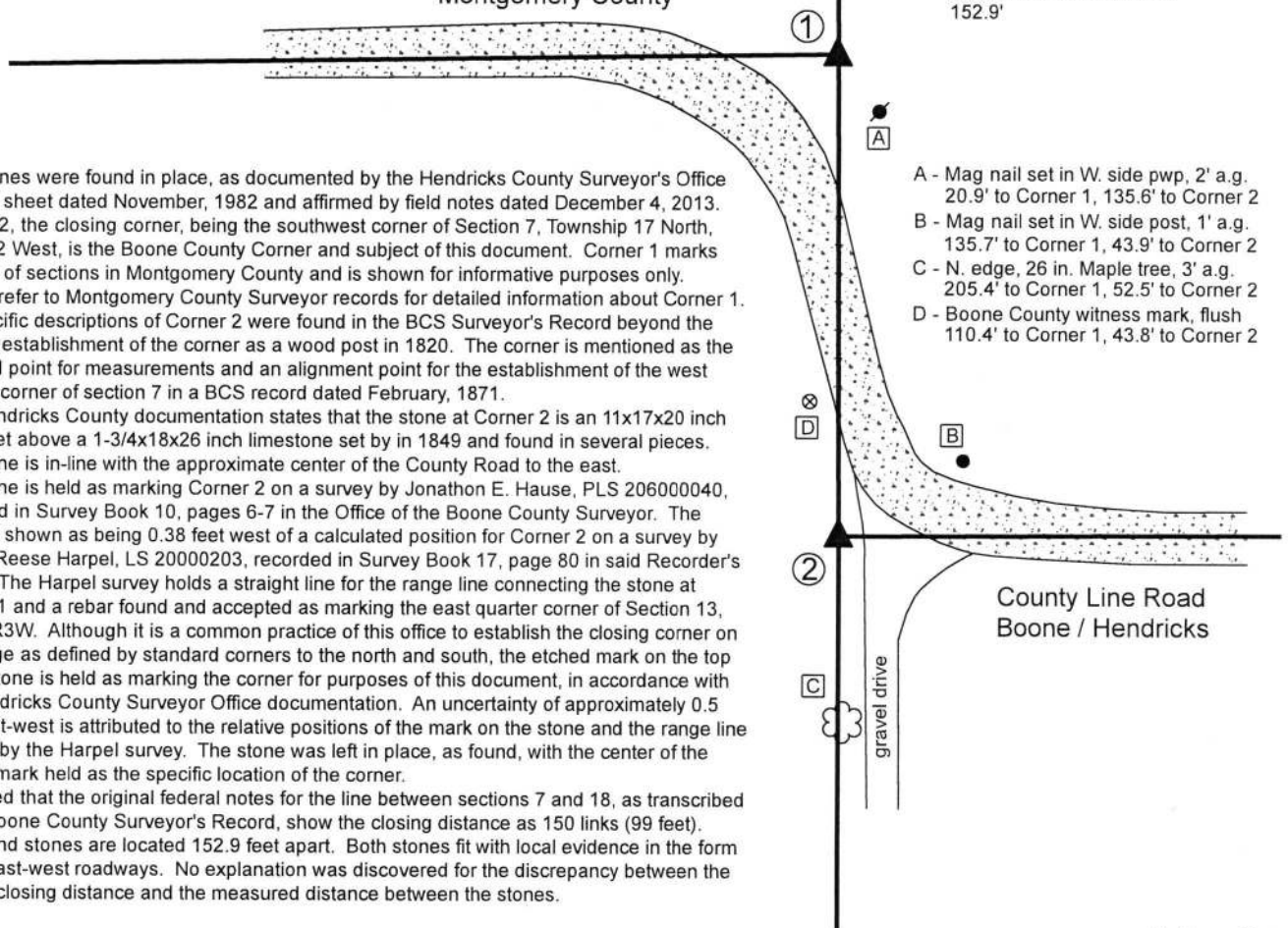
IN02\_T17NR3W13\_08 IN02\_T17NR2W18\_00

### CORNER WITNESS DETAIL

SCALE 1" = 60'



County Road 800 South  
Montgomery County



① S.E. Corner, Section 12  
N.E. Corner, Section 13  
T 17 N, R 3 W  
Montgomery County corner

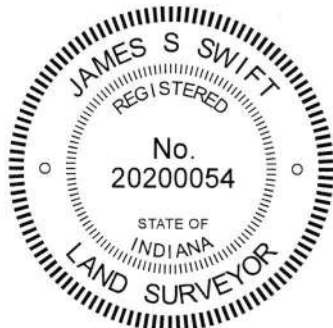
② S.W. Corner, Section 7  
N.W. Corner, Section 18  
T 17 N, R 2 W  
Boone & Hendricks corner

Distance between stones:  
152.9'

- A - Mag nail set in W. side pwp, 2' a.g.  
20.9' to Corner 1, 135.6' to Corner 2
- B - Mag nail set in W. side post, 1' a.g.  
135.7' to Corner 1, 43.9' to Corner 2
- C - N. edge, 26 in. Maple tree, 3' a.g.  
205.4' to Corner 1, 52.5' to Corner 2
- D - Boone County witness mark, flush  
110.4' to Corner 1, 43.8' to Corner 2

The stones were found in place, as documented by the Hendricks County Surveyor's Office on a tie sheet dated November, 1982 and affirmed by field notes dated December 4, 2013. Corner 2, the closing corner, being the southwest corner of Section 7, Township 17 North, Range 2 West, is the Boone County Corner and subject of this document. Corner 1 marks corners of sections in Montgomery County and is shown for informative purposes only. Please refer to Montgomery County Surveyor records for detailed information about Corner 1. No specific descriptions of Corner 2 were found in the BCS Surveyor's Record beyond the original establishment of the corner as a wood post in 1820. The corner is mentioned as the terminal point for measurements and an alignment point for the establishment of the west quarter corner of section 7 in a BCS record dated February, 1871. The Hendricks County documentation states that the stone at Corner 2 is an 11x17x20 inch stone set above a 1-3/4x18x26 inch limestone set by in 1849 and found in several pieces. The stone is in-line with the approximate center of the County Road to the east. The stone is held as marking Corner 2 on a survey by Jonathon E. Hause, PLS 206000040, recorded in Survey Book 10, pages 6-7 in the Office of the Boone County Surveyor. The stone is shown as being 0.38 feet west of a calculated position for Corner 2 on a survey by James Reese Harpel, LS 20000203, recorded in Survey Book 17, page 80 in said Recorder's Office. The Harpel survey holds a straight line for the range line connecting the stone at Corner 1 and a rebar found and accepted as marking the east quarter corner of Section 13, T17N, R3W. Although it is a common practice of this office to establish the closing corner on the range as defined by standard corners to the north and south, the etched mark on the top of the stone is held as marking the corner for purposes of this document, in accordance with the Hendricks County Surveyor Office documentation. An uncertainty of approximately 0.5 foot east-west is attributed to the relative positions of the mark on the stone and the range line as held by the Harpel survey. The stone was left in place, as found, with the center of the etched mark held as the specific location of the corner. It is noted that the original federal notes for the line between sections 7 and 18, as transcribed in the Boone County Surveyor's Record, show the closing distance as 150 links (99 feet). The found stones are located 152.9 feet apart. Both stones fit with local evidence in the form of the east-west roadways. No explanation was discovered for the discrepancy between the federal closing distance and the measured distance between the stones.

Jackson Twp  
Boone County



*Kenneth E. Hedge*  
Kenneth E. Hedge, County Surveyor

*James S. Swift*  
James S. Swift, IN LS 20200054  
March 6, 2019

Montgomery County	Section 12 T17N, R3W	Section 7 T17N, R2W
	Section 13 T17N, R3W	Section 18 T17N, R2W Hendricks County

