

SECTION CORNER RECORD

SW 700-550

BOONE COUNTY SURVEYOR'S OFFICE

State Plane grid coordinates NAD83 (2011):

North: 1708227.02 East: 3096073.92 (U.S. survey feet)

Type of monument: 5/8 inch diameter rebar with aluminum cap stamped 'Boone County Surveyor' 24 inches long, set over stone

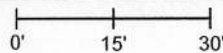
Depth: five inches above surrounding ground

Indiana tie card references:

IN02_T17NR1W06_76 IN02_T17NR1W07_04

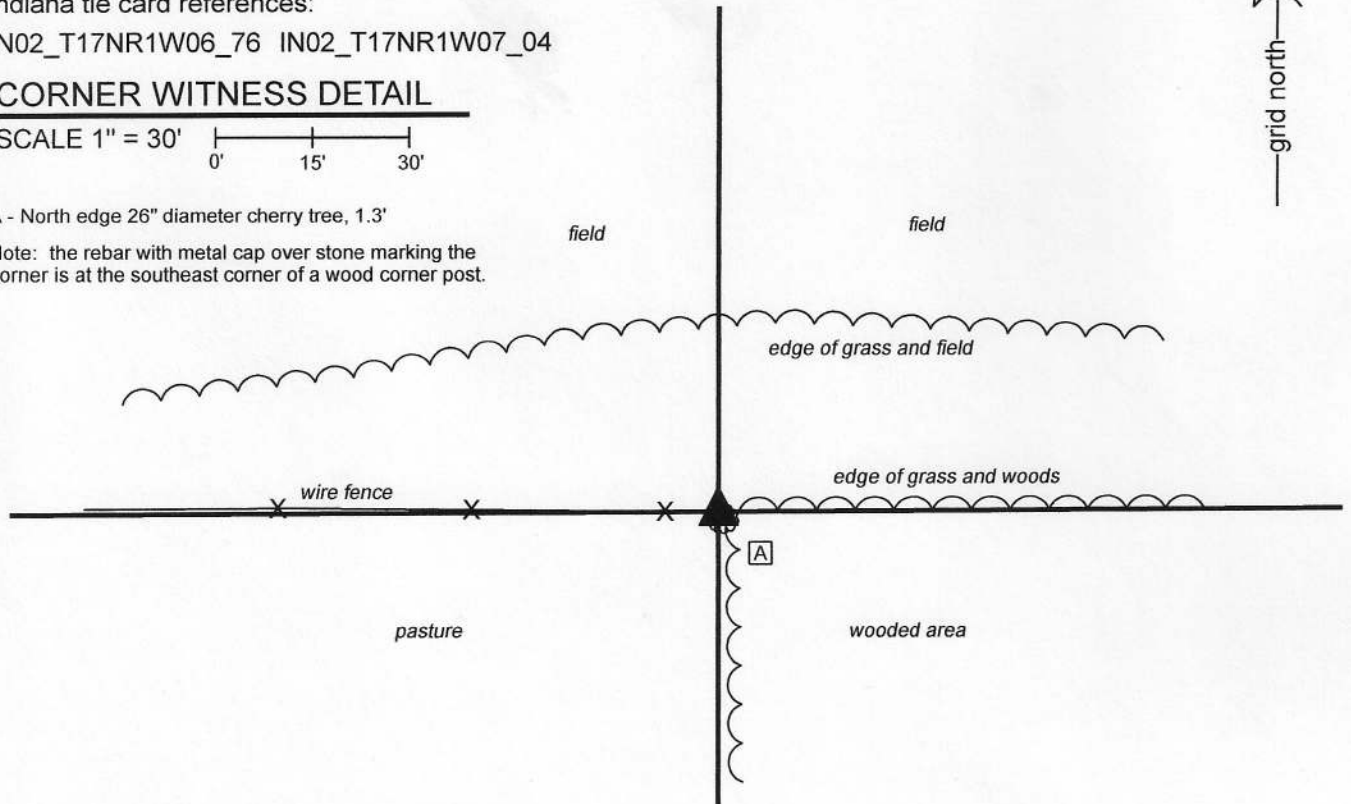
CORNER WITNESS DETAIL

SCALE 1" = 30'



A - North edge 26" diameter cherry tree, 1.3'

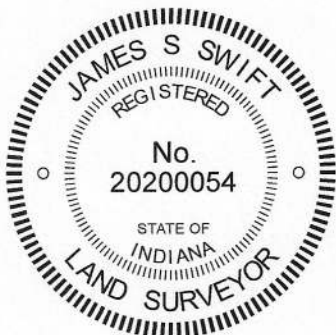
Note: the rebar with metal cap over stone marking the corner is at the southeast corner of a wood corner post.



The rebar with metal cap was set over a stone found.

A BCS record of December 11-12, 1862 states, with respect to this corner, "Reest. Set Rock 10.8.6 1/2." No recent BCS tie cards were found referencing this corner.

Excavation was performed at this corner on November 13, 2020. Prior to excavation, a wood corner post was found at the easterly terminus of a fence to the west. The post had fencing cut-off toward the east and south, though fences are no longer standing in those directions. Excavation around the post revealed the stone described in the 1862 record at 19 inches deep, adjacent to the southeast edge of the wood corner post. The stone measured 8 inches N-S by 6 1/2 inches E-W. The full height of the stone was not exposed but another rock was found with a probe at 10 inches below the top of the found stone. A chiseled mark was found on the top of the stone. The position of the stone and post fit well with the relative positions of proximate corners with respect to distances report in the original federal field notes for the township. The stone was accepted as being the same monument described in the 1862 record and was held as marking the corner. The stone was left in place. The post remains stable in the ground and represents the western end of a fence which currently enclose a cattle pasture to the southwest. The stone is too close to the post to set a Harrison monument at this corner. The top portion of the stone was embedded in concrete and a 24 inch length of 5/8 inch rebar was set directly over the mark on the top of the stone. The rebar is encased in a substantial amount of concrete. The rebar protrudes 5 inches out of the ground and is adjacent to the southeast corner of the post. The rebar is intended to mark the corner and is not a witness to the post.



Kenneth E. Hedge
Kenneth E. Hedge, County Surveyor

James S. Swift
James S. Swift, IN LS 20200054
November 18, 2020

Jackson Township

Section 6
T17N, R1W

Section 7
T17N, R1W

SECTION CORNER RECORD

SW 750-500

BOONE COUNTY SURVEYOR'S OFFICE

State Plane grid coordinates NAD83 (2011):

North: 1705586.99 East: 3098758.89 (U.S. survey feet)

Type of monument: Harrison, 4" disk 'Section Corner'

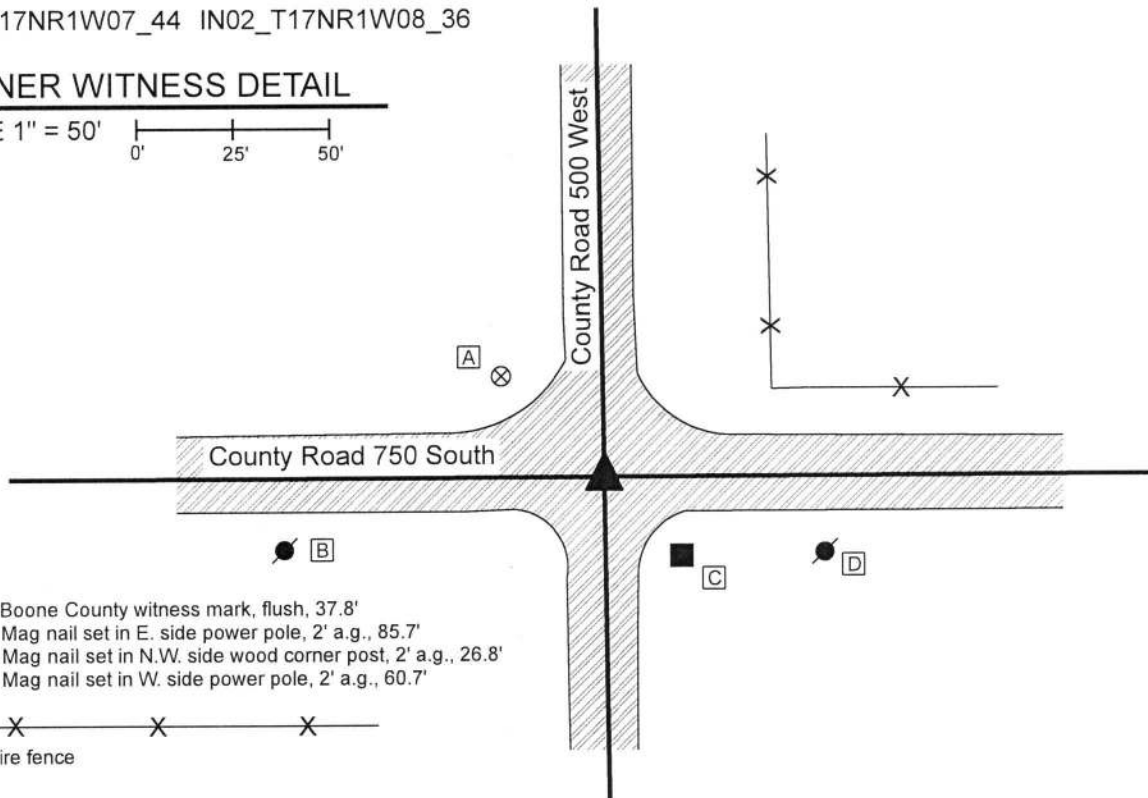
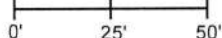
Depth: One inch below adjacent road surface

Indiana tie card references:

IN02_T17NR1W07_44 IN02_T17NR1W08_36

CORNER WITNESS DETAIL

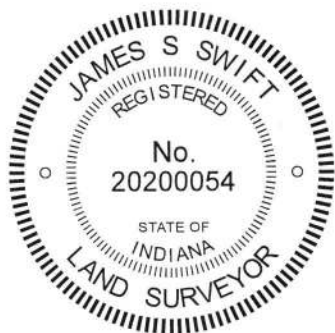
SCALE 1" = 50'



- A - Boone County witness mark, flush, 37.8'
- B - Mag nail set in E. side power pole, 2' a.g., 85.7'
- C - Mag nail set in N.W. side wood corner post, 2' a.g., 26.8'
- D - Mag nail set in W. side power pole, 2' a.g., 60.7'

— X — X — X —
 - Wire fence

The Harrison monument was set over a stone found. BCS records dated March 16, 1896 and September 30, 1912 state, with respect to this corner, "Found rock at true point." A BCS tie card dated July 10, 1968 states "No stone." A correlating entry in the BCS Surveyor's Record states, "No stone was found. Railroad rail set." This corner was excavated on October 22, 2019. Prior to excavation, a Mag nail was found at the surface of the intersecting roads. Excavation revealed a vertical section of railroad rail at four inches below grade, directly below the Mag nail. Further excavation revealed several rocks found at 33 inches deep. This grouping consisted of three small rocks and one obviously larger rock. The larger rock was found to be 7 inches E-W by 7 inches N-S with the top 10 inches of the stone exposed. The entire height of the rock was not measured, but it was not entirely stable at 10 inches exposed, hence is evidently not much taller than what was exposed. The stone was somewhat square shaped and all four sides of the stone were observed to be flat and vertical. An etched "+" mark was distinctly visible on the top of the stone, near the southwest corner of the top. The stone was embedded in the clay layer below the road, with the top of the stone coincident with the bottom of the road bed. The stone was accepted as providing the best available evidence of the corner and is believed to be the same monument called in the 1896 and 1912 records. The stone was left in place and a Harrison monument was set over the etched mark on the top of the stone. The nail and rail, both removed during excavation, had been 0.7 foot north and 0.5 foot west of the mark on the stone. This corner was originally established as a wood post in 1820.



Kenneth E. Hedge
 Kenneth E. Hedge, County Surveyor

James S. Swift
 James S. Swift, IN LS 20200054
 November 19, 2019

Jackson Township

Section 7 T17N, R1W	Section 8 T17N, R1W
------------------------	------------------------

SECTION CORNER RECORD

SW 800-500

BOONE COUNTY SURVEYOR'S OFFICE

State Plane grid coordinates NAD83 (2011):

North: 1702938.41 East: 3098794.48 (U.S. survey feet)

Type of monument: Harrison, 4" disk 'Section Corner'

Depth: One inch below adjacent road surface

Indiana tie card references:

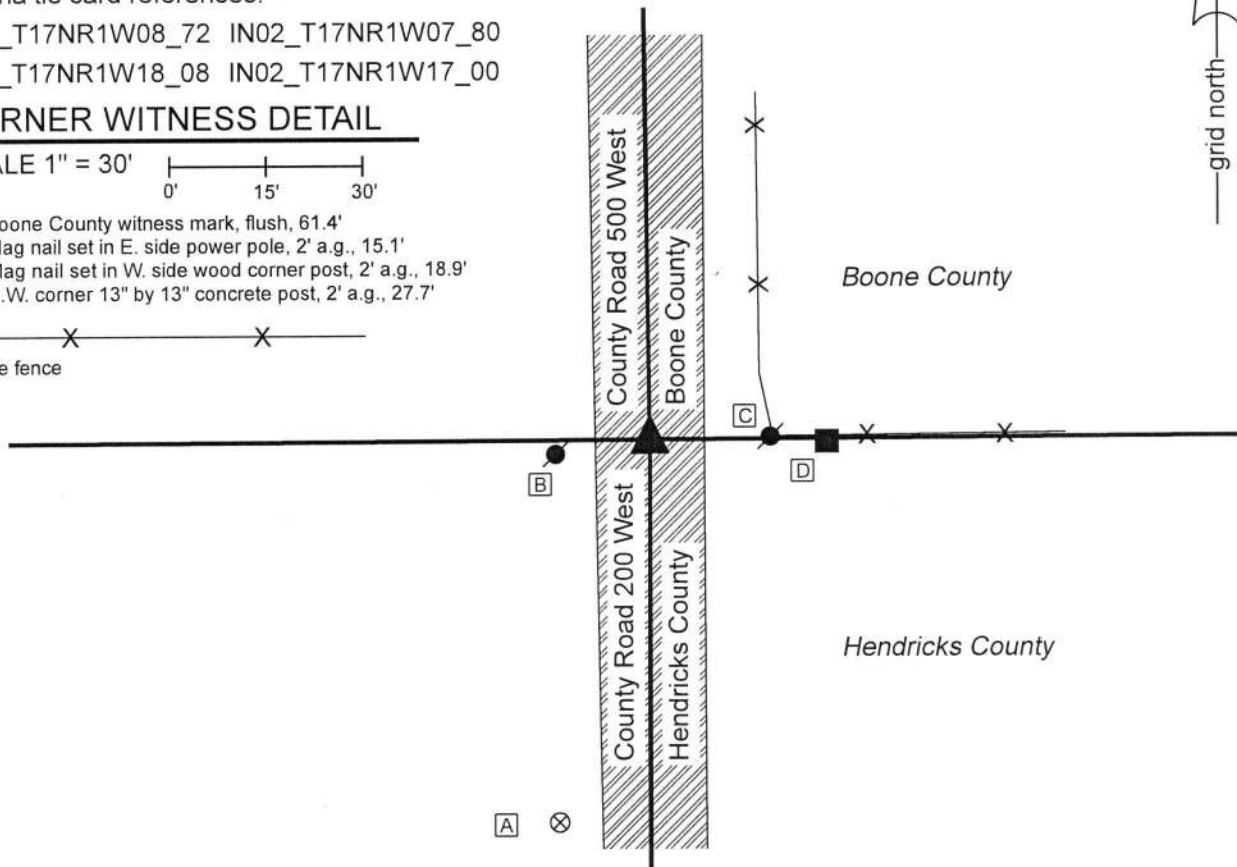
IN02_T17NR1W08_72 IN02_T17NR1W07_80

IN02_T17NR1W18_08 IN02_T17NR1W17_00

CORNER WITNESS DETAIL

SCALE 1" = 30'

- A - Boone County witness mark, flush, 61.4'
- B - Mag nail set in E. side power pole, 2' a.g., 15.1'
- C - Mag nail set in W. side wood corner post, 2' a.g., 18.9'
- D - S.W. corner 13" by 13" concrete post, 2' a.g., 27.7'



The Harrison monument was set over a vertical section of railroad rail found.

No specific descriptions of this corner were found in the BCS Surveyor's Record beyond the original establishment of the corner as a wood post in 1820. A BCS tie card dated July 10, 1968 calls the corner as "no stone" and demonstrates that the corner was established in the center of the right-of-way of the north-south county road, in line with evidence to the east and west.

No substantial excavation was performed at this corner. A vertical section of railroad rail, the top of which is at 9 inches below grade, was found. This monument is believed to have been set in association with the creation of the 1968 BCS tie card. This corner was excavated by the Hendricks County Surveyor's Office on July 17, 2013. The field notes provided by the HCSO state that a 3 foot hole was excavated around the found railroad rail. The extent of excavation remains evident as cut marks on the surface of the asphalt roadway. The HCSO excavation was accepted as sufficient and the vertical section of railroad rail was accepted as marking the corner. The top 12 inches of the rail were exposed. The rail was left in place and two railroad spikes were driven along side the rail to provide stability of grip for concrete. The top of the rail and spikes were encased in concrete and a Harrison monument was set directly above the rail on October 25, 2019.



Kenneth E. Hedge
 Kenneth E. Hedge, County Surveyor

James S. Swift
 James S. Swift, IN LS 20200054
 November 19, 2019

Jefferson
 Township
 Boone
 County

Union
 Township
 Hendricks
 County

Section 7 T17N, R1W	Section 8 T17N, R1W
Section 18 T17N, R1W	Section 17 T17N, R1W

SECTION CORNER RECORD

SW 800-550

BOONE COUNTY SURVEYOR'S OFFICE

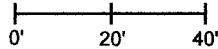
State Plane grid coordinates NAD83 (2011):
North: 1702932.15 East: 3096145.98 (U.S. survey feet)

Type of monument: Harrison, 4" disk 'Section Corner'
Depth: Three inches above surrounding ground

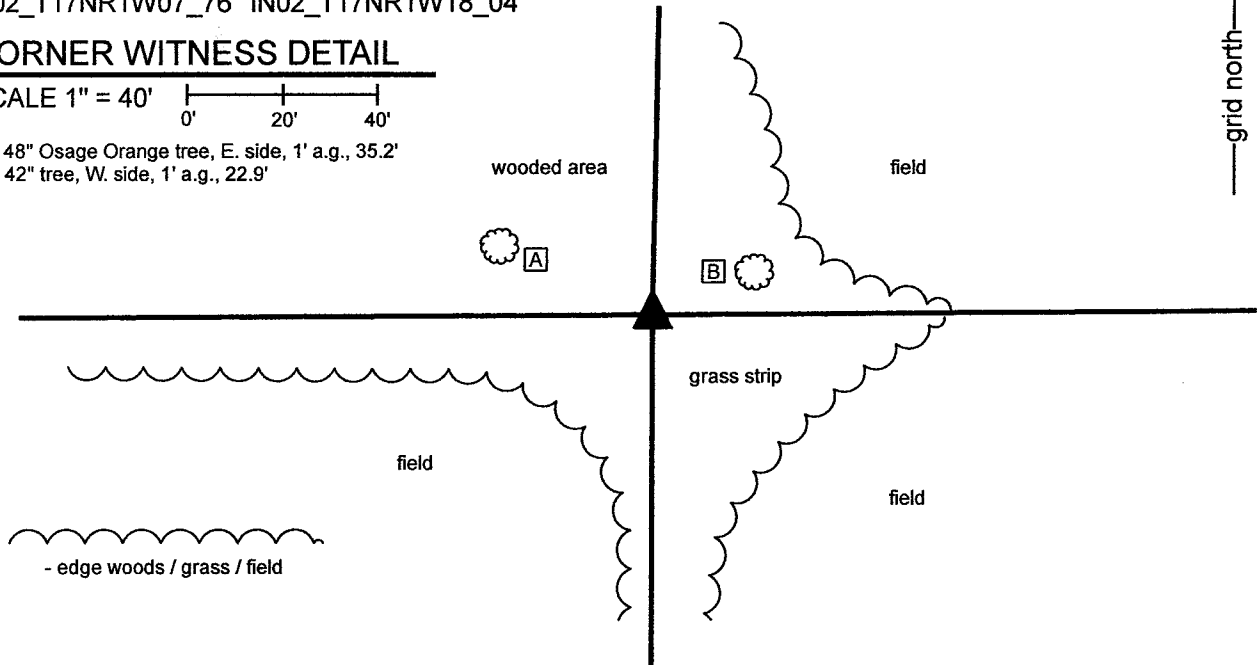
Indiana tie card references:
IN02_T17NR1W07_76 IN02_T17NR1W18_04

CORNER WITNESS DETAIL

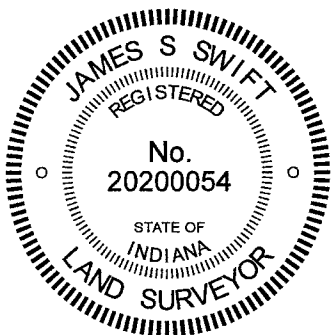
SCALE 1" = 40'



A - 48" Osage Orange tree, E. side, 1' a.g., 35.2'
B - 42" tree, W. side, 1' a.g., 22.9'



The Harrison monument was set over a stone found. No specific descriptions of this corner were found in the BCS Surveyor's Record beyond the original establishment of the corner as a wood post in 1820. No recent BCS tie cards were found referencing the corner. Field notes provided by the Office of the Hendricks County Surveyor dated July 23, 2013 state that an 8-inch by 8-inch corner post was found and that a search was made of approximately 3 feet around the post. The notes state that a 9x18x15 inch stone was found lying flat on the surface on the east side of the post. The notes are not explicit about whether the stone or post was held as marking the corner. This corner was excavated on March 9, 2021. The post and stone noted in the Hendricks County field notes were found, as specified in the notes. Excavation on that date and on March 17, 2021 revealed rocks buried on the north and west edges of the post, neither of which appeared to represent monuments purposely set to mark the corner. The stone on the east edge of the post was found to be partially embedded in the ground. This stone was removed and three additional rocks were found directly below. The upper two stones appeared to be haphazardly set, but the lowest stone, found at 14 inches deep, bore the characteristics of a corner stone, being vertical and oriented in cardinal directions. The stone was not touching the post and did not appear to be a brace rock. The stone measured 10 inches tall by 12 inches east-west by 8 inches north-south. This stone was accepted as the best available evidence of the corner. The stone was left in place and a Harrison monument was set over the top, center of the stone on March 17, 2021. The Harrison monument is 0.91 foot east of the northeast corner of the post and is surrounded by numerous other rocks found in the general vicinity of the post and set around the Harrison monument to protect it from being disturbed by agricultural machinery.



Kenneth E. Hedge
Kenneth E. Hedge, County Surveyor

James S. Swift
James S. Swift, IN LS 20200054
April 7, 2021

Jackson
Township
Boone
County

Section 7
T17N, R1W

Union
Township
Hendricks
County

Section 18
T17N, R1W