

SECTION CORNER RECORD

BOONE COUNTY SURVEYOR'S OFFICE

SE 700-000

State Plane grid coordinates NAD83 (2011):

Corner 1: North: 1708464.81 East: 3125145.73 (U.S. survey feet)

Corner 2: North: 1708625.84 East: 3125143.96 (U.S. survey feet)

Type and Depth of Monument:

Corner 1: Harrison, 4" disk 'Section Corner', 6" above adjacent ground

Corner 2: Harrison, 4" disk 'Section Corner', 1" below adjacent road

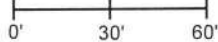
Indiana tie card references:

IN02_T17NR1W01_80 IN02_T17NR1E06_72

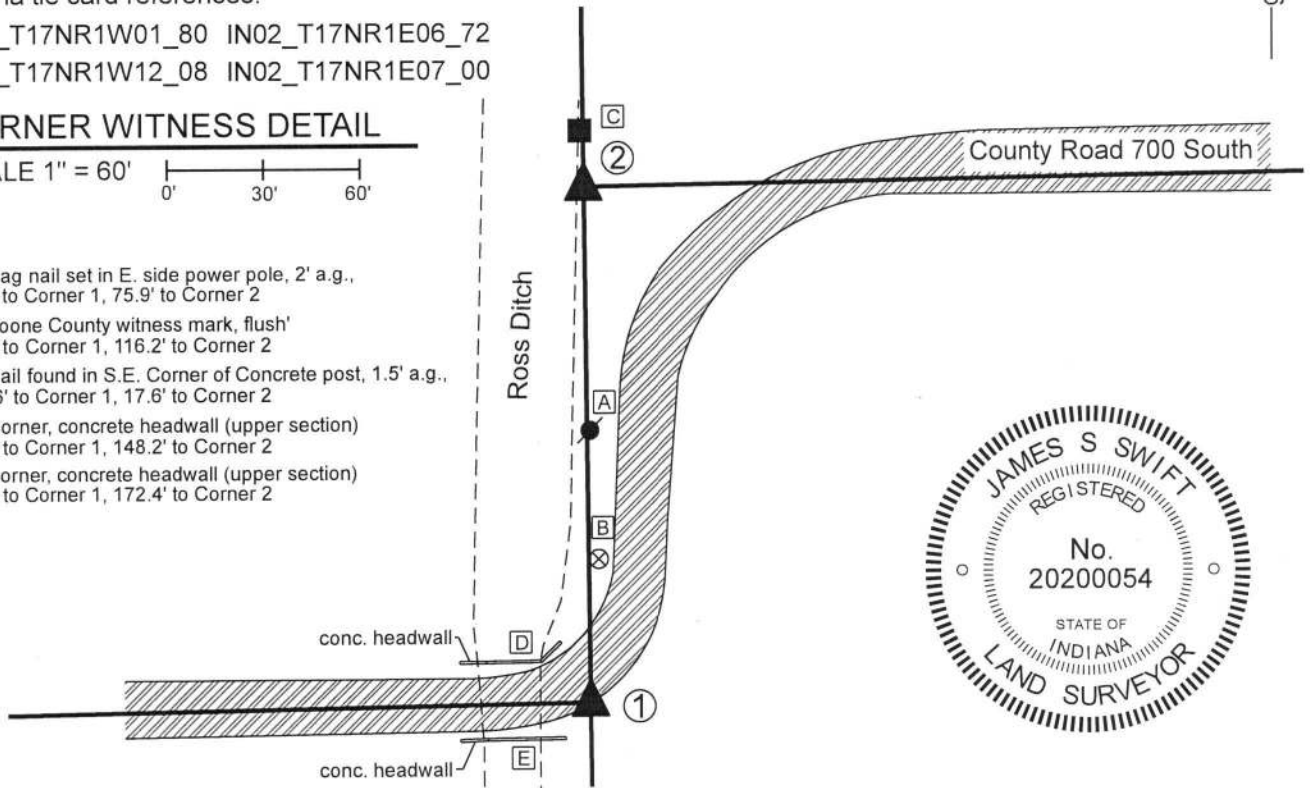
IN02_T17NR1W12_08 IN02_T17NR1E07_00

CORNER WITNESS DETAIL

SCALE 1" = 60'



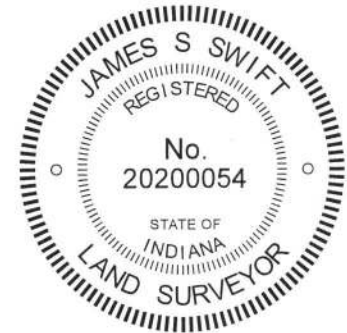
- A - Mag nail set in E. side power pole, 2' a.g., 85.1' to Corner 1, 75.9' to Corner 2
- B - Boone County witness mark, flush' 45.0' to Corner 1, 116.2' to Corner 2
- C - Nail found in S.E. Corner of Concrete post, 1.5' a.g., 178.6' to Corner 1, 17.6' to Corner 2
- D - Corner, concrete headwall (upper section) 20.8' to Corner 1, 148.2' to Corner 2
- E - Corner, concrete headwall (upper section) 18.8' to Corner 1, 172.4' to Corner 2



- ① S.E. Corner, Section 1
N.E. Corner, Section 12
T 17 N, R 1 W

- ② S.W. Corner, Section 6
N.W. Corner, Section 7
T 17 N, R 1 E

Distance between monuments:
161.04' (244 links)



The Harrison monument at Corner 2 was set in place of a stone found. The Harrison monument at Corner 1 was set at a calculated position. A BCS record dated February 11-12, 1867 states, with respect to Corner 1, "Re Established 39.87 N. of E. qr. Sec. cor of Sec. 12." A BCS record May 1, 1913 states, with respect to Corner 2, "Est. Set two rocks. One 20 lks West of true corner 10, 10, 4. One 20 lks East of true corner 8, 6, 5." A BCS tie card dated April 29, 1992 shows Corner 2 as a stone found.

Both of these corners fall on the east edge of the Ross Ditch. Corner 1 falls at the south edge of the bend in the roadway of C.R. 700 South, amidst fill associated with the concrete bridge over the ditch. The stone called in the 1992 tie card was found, undisturbed. The exact position of the corner was established with respect to two ties, a concrete nail in the southeast corner of a concrete post and a PK nail in the south edge of a multi-trunk tree, both shown as ties on the 1992 tie card. (The tree is dead but standing and the bark was removed to expose the nail.) This point represented the high point of the stone. The stone measured 15 inches N-S by 12 inches E-W by 5 inches tall. A 5/8 inch diameter rebar bearing the cap of Dodge, SO245, was found 1.1 foot east of the high point on the stone. No recorded surveys were found to provide explanation for why the rebar is east of the stone. A search for the east witness stone did not reveal further evidence. The west stone would surely fall within the ditch. It is noted that the stone held in 1992 fits well with evidence of the closing corner in the form of the westerly prolongation of the roadway to the east and fits well with alignment of other corners along the meridian line to both the north and south. It is evident that the Ross Ditch was excavated mostly west of the meridian line.

The stone shown on the 1992 tie card was held as marking Corner 2. The stone was removed and replaced with a Harrison monument on October 10, 2019. Corner 1 was established at the record closing offset distance of 244 links (161.04 feet) on the prolongation of the line from the standard corner 1/2 mile north through Corner 2. This position fits well with the easterly prolongation of C.R. 700 South. A Harrison monument set loosely in the gravel material of the road was found 1 foot east of this position. The monument appears to correlate with the position of the rebar found 1 foot east of Corner 2. No documentation was found for the establishment of monument. It was easily removed with a shovel and a Harrison monument was set in a more durable fashion at the calculated position on October 23, 2019. A survey recorded as Instrument 200800008588 shows Corner 1 as the previously existing Harrison and shows Corner 2 as the concrete post which is actually a witness as shown on the 1992 tie card and held as a witness hereon.

Corner 1 was originally established as a wood post in 1819. Corner 2 was originally established as a wood post in 1820.

Kenneth E. Hedge
Kenneth E. Hedge, County Surveyor

James S. Swift
James S. Swift, IN LS 20200054 11/6/2019

Harrison Township

Section 1 T17N, R1W	Section 6 T17N, R1E
Section 12 T17N, R1W	Section 7 T17N, R1E

SECTION CORNER RECORD

SE 700-050

BOONE COUNTY SURVEYOR'S OFFICE

State Plane grid coordinates NAD83 (CORS96):

North: 1708669.12 East: 3127668.18 (U.S. survey feet)

Type of monument: Harrison, 4" disk 'Section Corner'

Depth: six inches below adjacent gravel road surface

Indiana tie card references:

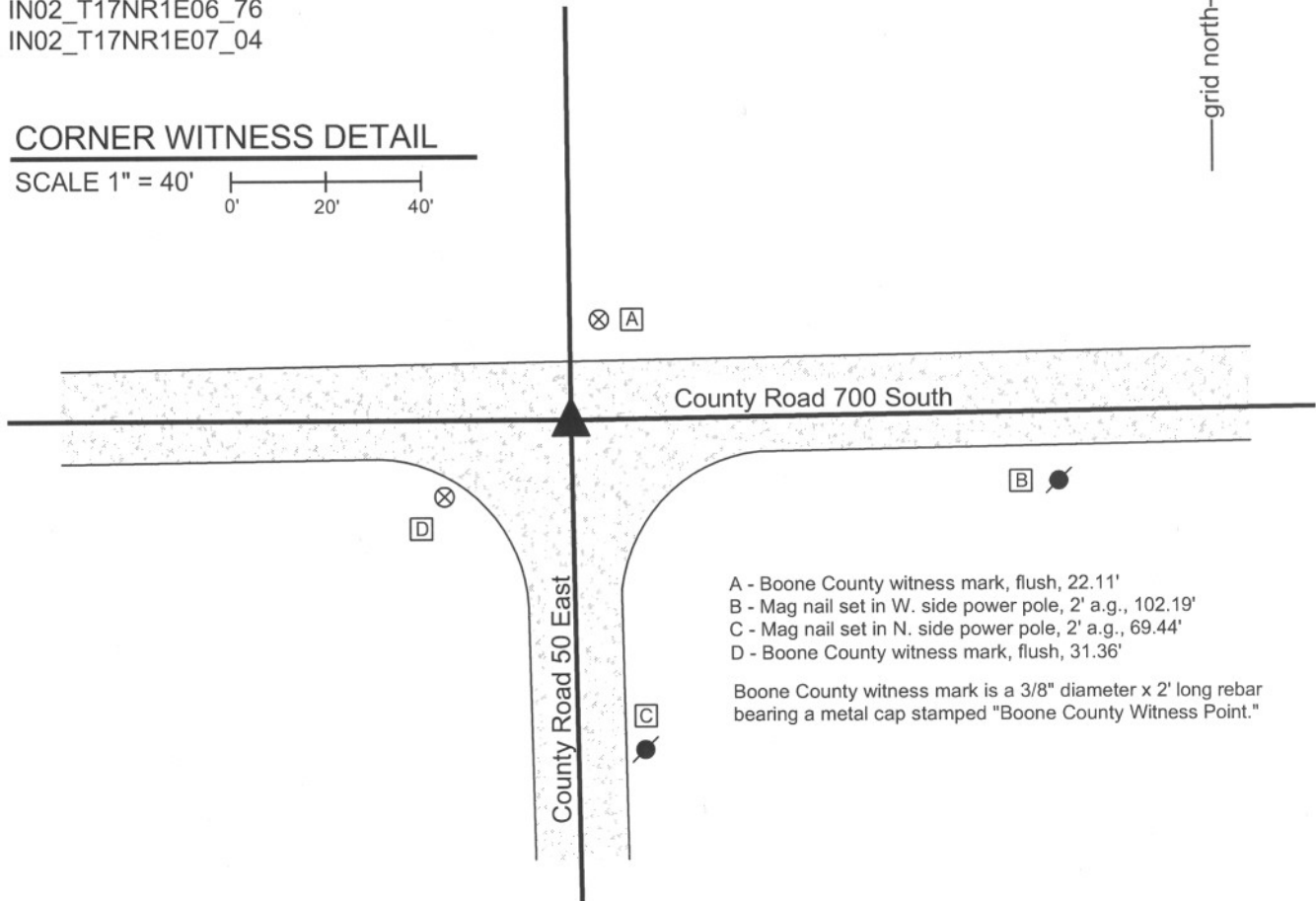
IN02_T17NR1E06_76

IN02_T17NR1E07_04



CORNER WITNESS DETAIL

SCALE 1" = 40'

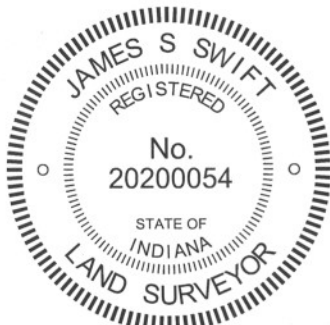


- A - Boone County witness mark, flush, 22.11'
- B - Mag nail set in W. side power pole, 2' a.g., 102.19'
- C - Mag nail set in N. side power pole, 2' a.g., 69.44'
- D - Boone County witness mark, flush, 31.36'

Boone County witness mark is a 3/8" diameter x 2' long rebar bearing a metal cap stamped "Boone County Witness Point."

The harrison monument was set in place of a vertical section of railroad rail found.

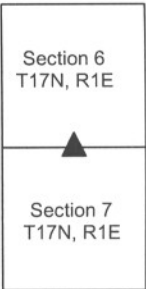
No specific descriptions of this corner were found in the BCS Surveyor's Record beyond the original establishment of the corner as a wood post in June, 1820. A BCS tie card dated September 26, 2967 states "no stone / rail." A BCS tie card dated April 29, 1992 shows the corner as a railroad rail found. This corner was excavated on February 23, 2011. Prior to excavation, a vertical section of railroad rail was found at 3 inches below grade. Excavation of an area extending 4 feet north, 4 feet east, 5 feet south and 4 feet west of the found rail revealed no further evidence of the corner. It is noted that the cross section of the road bed at this intersection is 12 inches of road bed material over 6 inches of a black dirt material similar to that in the adjacent fields over the clay sub-base. It is also noted that the 1876 map of Boone County does not show a road existing in this immediate vicinity. That map shows County Road 700 south terminating slightly east of the intersection. The railroad fits with the best available local evidence of the corner in the form of the existing roads running east, south and west of the corner. The rail was held as marking the corner. The rail was removed and replaced with a harrison monument in the same position.



Kenneth E. Hedge, County Surveyor

James S. Swift, IN LS 20200054
March 1, 2012

Harrison Township



SECTION CORNER RECORD

SE 700-100

BOONE COUNTY SURVEYOR'S OFFICE

State Plane grid coordinates NAD83 (CORSS96):

North: 1708706.83 East: 3130321.02 (U.S. survey feet)

Type of monument: Harrison, 4" disk 'Section Corner'

Depth: six inches below adjacent gravel road surface

Indiana tie card references:

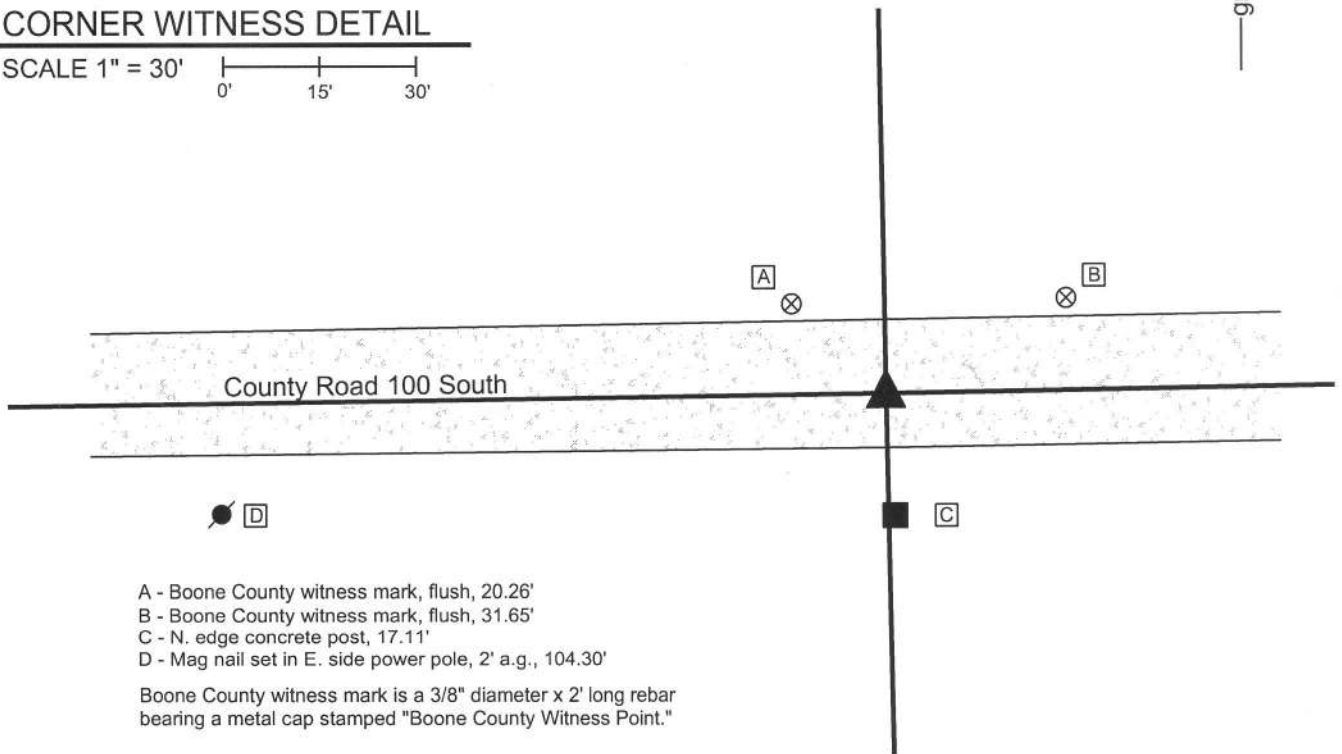
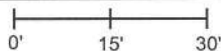
IN02_T17NR1E06_80 IN02_T17NR1E05_72

IN02_T17NR1E07_08 IN02_T17NR1E08_00



CORNER WITNESS DETAIL

SCALE 1" = 30'



The harrison monument was set over a stone found.

A BCS record of July 2, 1895 states "Set Rock 12x9x9 marked +." A BCS tie card dated March 9, 1967 states "no stone."

This corner was excavated on February 23, 2011. Prior to excavation a railroad spike was found at the surface. Excavation revealed a stone found at 14 inches deep. With 8 inches of the top of the stone exposed, it measured 9 inches E-W by 7 inches N-S. The stone measured approximately 12 inches tall on the north side. A distinct etched + mark was found on the east edge of the top of the stone. The stone was embedded in the clay layer below the road, protruding 2 inches into the bottom of the road bed. The stone was accepted as being the stone described in the 1895 record and held as marking the corner. The was left in place. The top of the stone was encased in concrete and a harrison monument was set over the top, center of the stone. This position is even with the west edge of the concrete post on the south side of the road. The railroad spike, removed during excavation, had been 1.2 feet north and 2.4 feet east of the stone.

This corner was originally established as a wood post in June, 1820.



Kenneth E. Hedge
Kenneth E. Hedge, County Surveyor

James S. Swift
James S. Swift, IN LS 20200054
March 1, 2012

Harrison Township Perry Township

Section 6 T17N, R1E	Section 5 T17N, R1E
Section 7 T17N, R1E	Section 8 T17N, R1E

PHOTOGRAPHIC DOCUMENTATION

Date of photography: February 23, 2011

View of the stone as first exposed.
View from above and west.



View of the stone as first exposed.
View from above and north.



View from the north, showing the stone and the concrete post on the south side of the road.



Close-up of the stone, showing the etched mark on the east side of the top of the stone.



View of the stone from above, prior to being encased in concrete as part of the setting of the harrison monument above the stone.



For details and documentation, refer to related sheet "Section Corner Record."

SECTION CORNER RECORD

SE 750-000

BOONE COUNTY SURVEYOR'S OFFICE

State Plane grid coordinates NAD83 (2011):

Corner 1: North: 1705803.25 East: 3125168.46 (U.S. survey feet)

Corner 2: North: 1705957.95 East: 3125167.14 (U.S. survey feet)

Type of monument: Harrison, 4" disk 'Section Corner'

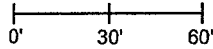
Depth: Flush with surrounding ground

Indiana tie card references:

IN02_T17NR1E07_36 IN02_T17NR1W12_44

CORNER WITNESS DETAIL

SCALE 1" = 60'



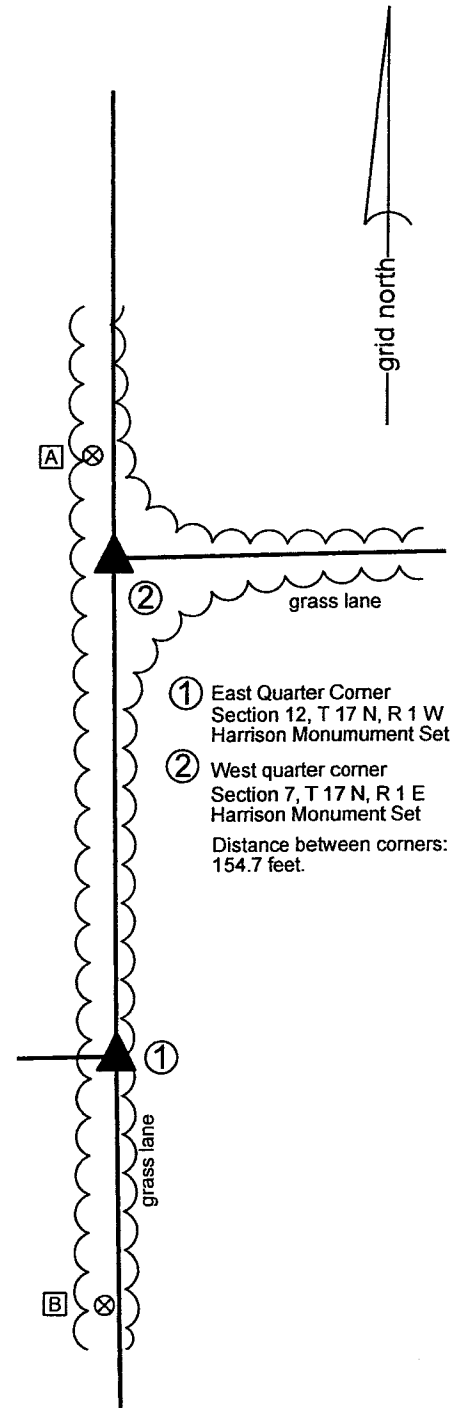
- A - Boone County witness mark, flush 186.9' to Corner 1, 32.8' to Corner 2
- B - Boone County witness mark, flush 77.2' to Corner 1, 231.8' to Corner 2

The Harrison monument at Corner 2 was set in place of fragments of a sandstone found. The Harrison monument at Corner 1 was set on the Meridian Line as defined by Corner 2 and the standard corner 1/2 mile north, in-line with fragments of fencing found.

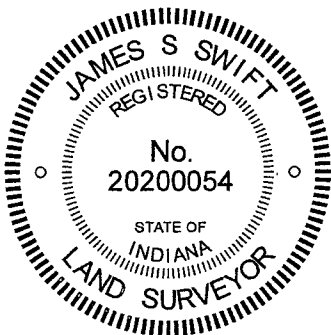
No specific descriptions of Corner 1 were found in the BCS Surveyor's Record beyond the original establishment of the corner as a wood post in 1819. Corner 2 is not an original federal corner, but is specified on a BCS Record of October 19, 1920 as "Set Sandstone Rock 6, 14, 22." No recent BCS tie cards were found referencing these corners.

Both corners were excavated in October 2019. The most substantial evidence found at that time was with respect to the position of Corner 2. A 1/2-inch rebar with a yellow plastic cap was found flush with the grass at the intersection of grass lanes to the north, south and east. The rebar was slightly east of the north-south grass lane. Excavation in this vicinity revealed numerous rocks found along with a variety of scraps of fencing indicating the position of former fencing to the north, south and east. Amidst this evidence, a vertical piece of sandstone was found embedded in the ground. The stone appeared to have been broken off and only the bottom portion of the stone was found, but it was located at the evident intersection of the old fences to the north, south and east, per the substantial evidence of scraps of fencing. The piece of sandstone also fit well with the existing grass lanes and fit remarkably well with the relative position of a stone at the southwest corner of section 7 (see BCS Corner SE 800-000) with respect to distances reported in the 1920 BCS record. The vertical piece of sandstone was accepted as being the remains of the monument called in the 1920 record and was held as marking Corner 2. A Harrison monument was set at this position on October 10, 2019. The 1/2-inch diameter rebar, removed during excavation, had been 4.2 feet east and 1.4 foot north of this position.

Excavation in October, 2019 in the vicinity of Corner 1 revealed less substantial evidence of the corner, though scraps of east-west fencing were found buried in the ground near the west edge of the grass lane. These scraps of fence fit well with the existing field division and are generally in-line with the easterly prolongation of that portion of County Road 750 South which begins at County Road 25 West (1/4 mile west of the subject corners) and continues to the west. It is noted that the average of the federal closing distances at the northwest and southwest corners of Section 7 is 212.5 links or 140.25 feet. The evidence found indicating the position of Corner 1 (fence scraps, field division and physical roadway beginning 1/4 mile west) is at approximately 155 feet south of the stone held at Corner 2. No evidence of Corner 1 was found at 140.25 feet south of Corner 2. After careful review of the available evidence and records, the position of Corner 1 was established on the Meridian line, as noted above, in-line with the scraps of east-west fence found slightly to the west. This position is 154.7 feet south of Corner 2 and is three feet north of the easterly prolongation of a line connecting a railroad rail referenced by this office as marking the center quarter of section 12 and a nail found 3 inches deep at the approximate intersection of County Roads 750 South and 25 West. A Harrison monument was set at this position on March 9, 2021.

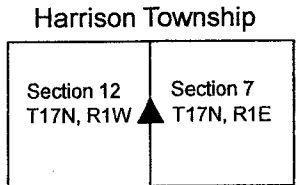


- ① East Quarter Corner Section 12, T 17 N, R 1 W Harrison Monument Set
 - ② West quarter corner Section 7, T 17 N, R 1 E Harrison Monument Set
- Distance between corners: 154.7 feet.



Kenneth E. Hedge
 Kenneth E. Hedge, County Surveyor

James S. Swift
 James S. Swift, IN LS 20200054
 March 16, 2021



SECTION CORNER RECORD

SE 750-100

BOONE COUNTY SURVEYOR'S OFFICE

State Plane grid coordinates NAD83 (2011):

North: 1706048.62 East: 3130374.10 (U.S. survey feet)

Type of monument: Harrison, 4" disk 'Section Corner'

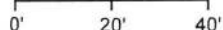
Depth: Three inches above surrounding ground

Indiana tie card references:

IN02_T17NR1E07_44 IN02_T17NR1E08_36

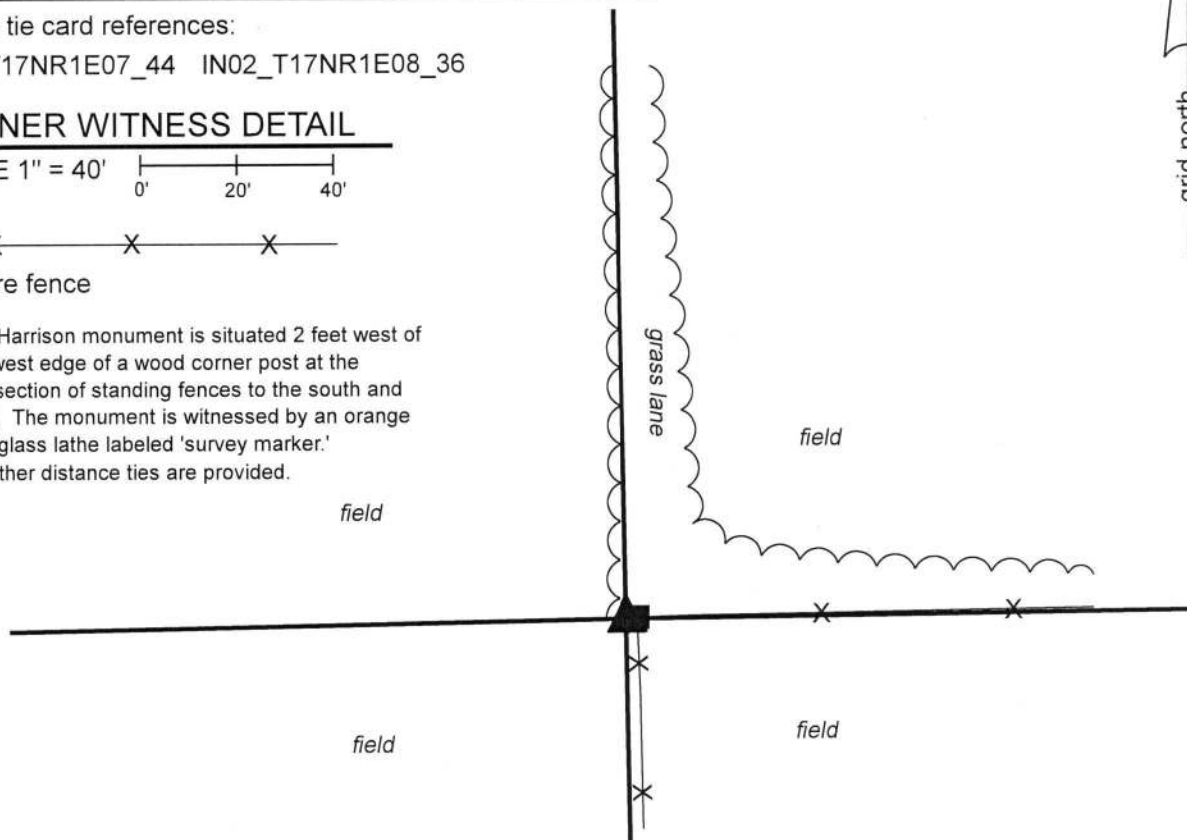
CORNER WITNESS DETAIL

SCALE 1" = 40'



- wire fence

The Harrison monument is situated 2 feet west of the west edge of a wood corner post at the intersection of standing fences to the south and east. The monument is witnessed by an orange fiberglass lathe labeled 'survey marker.' No other distance ties are provided.



The Harrison monument was set over a stone found.

A BCS record dated October 12, 1912 states, with respect to this corner, "Located 'H' in line with 'd' to 'b' sec. 7. Set rock 8x10x14 +. (Sand Rock) Wit rock + 4 L east."

No recent BCS tie cards or recorded surveys were found referencing this corner.

Excavation was performed at this corner on October 15 and 16, 2019. Prior to excavation, a wood corner post was observed at the intersection of fences to the south and east. The post was observed to be approximately 5 feet east and 3 feet north of a computed midpoint of a straight line connecting the section corners to the north and south. A rock found at 17 inches deep at the east edge of the wood corner appeared to be bracing the post and did not appear to be a stone purposely set to mark the corner. A rock found at 11 inches deep, 2 feet west of the post did bear the characteristics of a corner stone. The rock was 12 inches tall by 8 inches E-W by 4 inches N-S. The north, south and west sides of the stone were vertical and the east side was more sloping. It was not a sandstone and did not match the dimensions described in the 1912 record. Though the stone was west of the corner post, it falls generally in-line with standing fencing further south. The stone was removed and another stone was found directly below at 23 inches deep. This stone is 3 inches N-S by 3 inches E-W by 8 inches tall. The top, high point of the lower stone was found to be directly below the top, high point of the upper stone, as located prior to removal. The two stones were accepted as providing the best available evidence of the corner and were held as marking the corner. The lower stone was left in place and a Harrison monument was set directly above the top, high point of the lower stone, in place of the top, high point of the upper stone. This corner was originally established as a wood post in 1820.



Kenneth E. Hedge
Kenneth E. Hedge, County Surveyor

James S. Swift
James S. Swift, IN LS 20200054
December 3, 2019

Harrison Township Perry Township

Section 7 T17N, R1E	Section 8 T17N, R1E
------------------------	------------------------

SECTION CORNER RECORD

SE 800-000

BOONE COUNTY SURVEYOR'S OFFICE

State Plane grid coordinates NAD83 (2011):

Corner 2: North: 1703279.83 East: 3125201.14 (U.S. survey feet)

Corner 1: Precise position not yet perpetuated.

Corner 2: Stone with plus etched in top, seven inches below adjacent ground

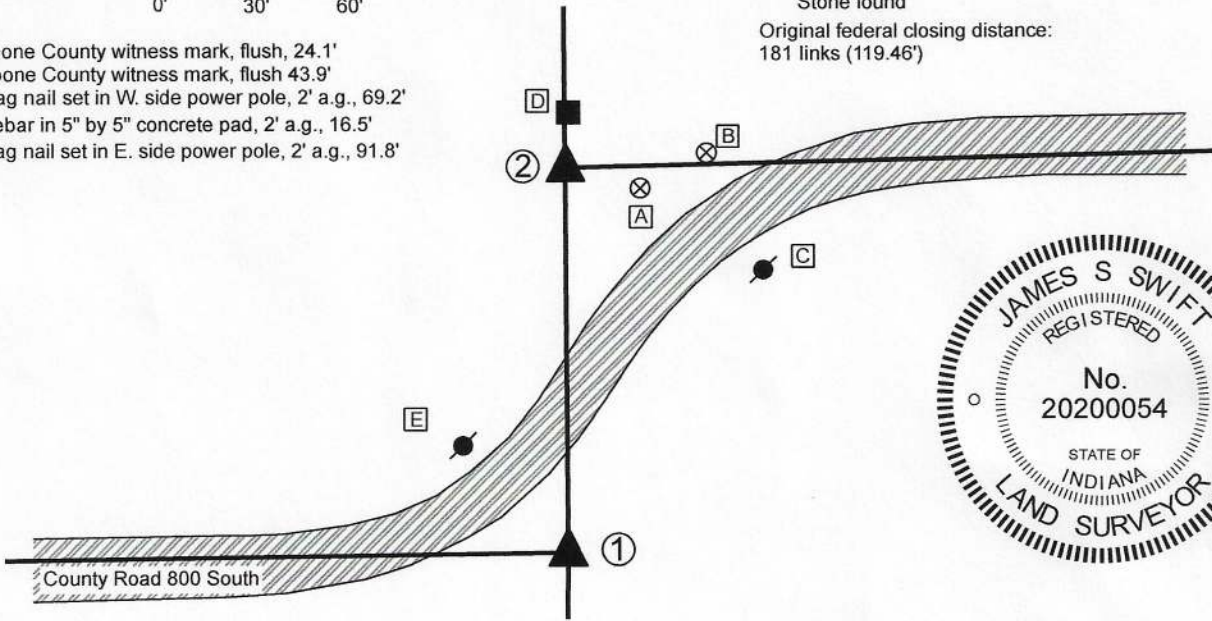
Indiana tie card references:

IN02_T17NR1W12_80 IN02_T17NR1E07_72
 IN02_T17NR1W13_08 IN02_T17NR1E18_00

CORNER WITNESS DETAIL

SCALE 1" = 60'

- A - Boone County witness mark, flush, 24.1'
- B - Boone County witness mark, flush 43.9'
- C - Mag nail set in W. side power pole, 2' a.g., 69.2'
- D - Rebar in 5" by 5" concrete pad, 2' a.g., 16.5'
- E - Mag nail set in E. side power pole, 2' a.g., 91.8'



- ① S.E. Corner, Section 12
N.E. Corner, Section 13
T 17 N, R 1 W
Position not established
- ② S.W. Corner, Section 7
N.W. Corner, Section 18
T 17 N, R 1 E
Stone found

Original federal closing distance:
181 links (119.46')



The stone marking Corner 2 was found in place and held as marking the corner.

A BCS Record of October 17-18, 1898 states, with respect to Corner 2, "Established Corner. 6x10x12 +. Top Rock 13x14x22 +". These stones were previously found by the Hendricks County Surveyor's Office. The top stone is located at 7 inches below grade, in line with the westerly prolongation of the approximate center of County Road 800 South to the east. The top stone is oriented in cardinal directions and measures 13 inches by 14 inches. The total height was not measured. Field notes by the Hendricks County Surveyor's Office dated November 3, 2017 state that the stone is 24 inches tall and is above another stone 6 by 10 by 12 inches. An etched + mark was ground into the top of the top stone by representatives of the Hendricks County. This mark is held as the precise position Corner 2.

No specific descriptions of Corner 1 were found in the BCS Surveyor's Record beyond the original establishment of the corner as a wood post in 1819.

The original notes for the federal subdivision of T17N, R1W call for an offset of 181 links (119.46 feet) between the two corners. The Hendricks County Surveyor's Office performed an extensive search at a position centered 119.46 feet south of the stone at Corner 2 in May, 2013 but did not find further evidence of the corner. It is noted that a position at 119.46 feet south of Corner 2 on the southerly prolongation of the meridian line fits well with the approximate center of the county road as it bears west from the corner. The precise position of Corner 1 will be established after the standard corner to the north (BC Corner SW-750-000) is established and after further reconnaissance is performed with respect to the position of the quarter corner to the west (BC Corner SW-800-050).

Kenneth E. Hedge, County Surveyor

James S. Swift, IN LS 20200054
 August 26, 2020

Harrison Township
Boone County

Middle Township
Hendricks County

Section 12 T17N, R1W	Section 7 T17N, R1E
Section 13 T17N, R1W	Section 18 T17N, R1E

SECTION CORNER RECORD

SE 800-000

BOONE COUNTY SURVEYOR'S OFFICE

State Plane grid coordinates NAD83 (2011):

Corner 1: North: 1703279.83 East: 3125201.14 (U.S. survey feet)

Corner 2: North: 1703160.38 East: 3125202.68 (U.S. survey feet)

Corner 1: 5/8" diameter rebar with aluminum cap stamped,
'Boone County Surveyor' 14 inches deep

Corner 2: Stone with cut X found, seven inches deep

Indiana tie card references:

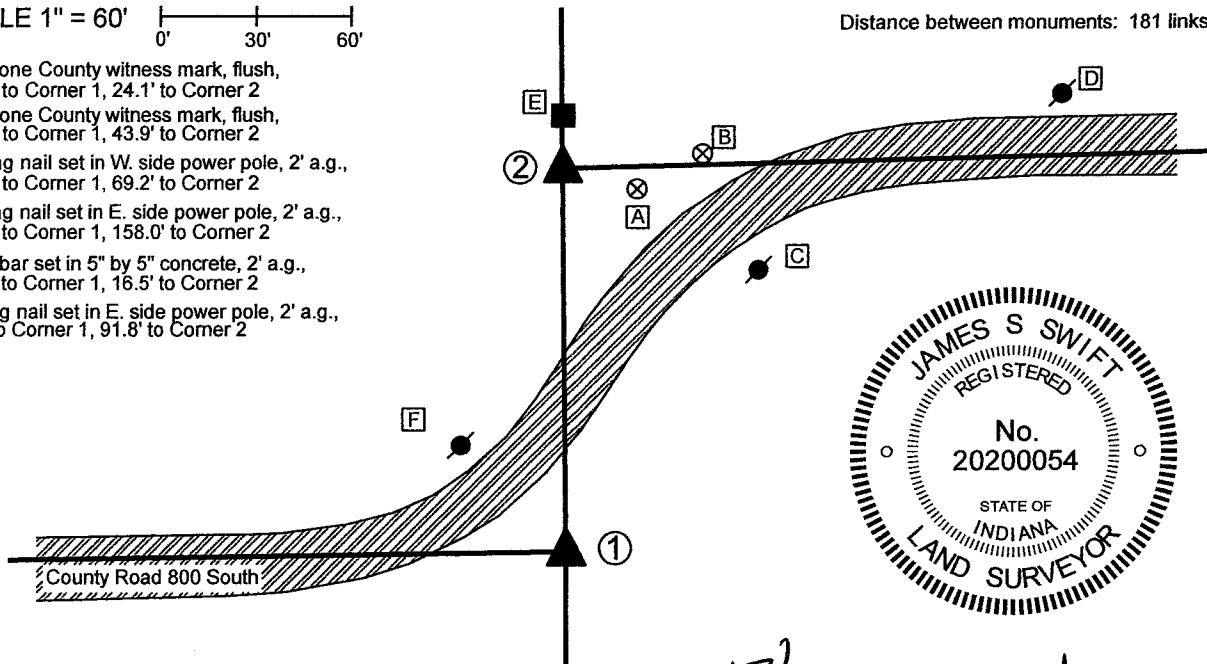
IN02_T17NR1W12_80 IN02_T17NR1E07_72

IN02_T17NR1W13_08 IN02_T17NR1E18_00

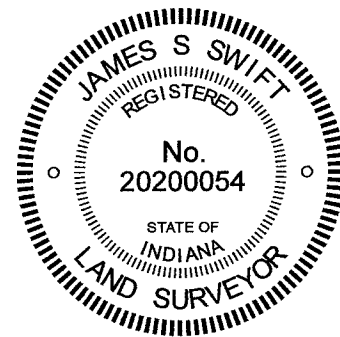
CORNER WITNESS DETAIL

SCALE 1" = 60'

- A - Boone County witness mark, flush, 115.1' to Corner 1, 24.1' to Corner 2
- B - Boone County witness mark, flush, 130.9' to Corner 1, 43.9' to Corner 2
- C - Mag nail set in W. side power pole, 2' a.g., 106.1' to Corner 1, 69.2' to Corner 2
- D - Mag nail set in E. side power pole, 2' a.g., 210.4' to Corner 1, 158.0' to Corner 2
- E - Rebar set in 5" by 5" concrete, 2' a.g., 136.0' to Corner 1, 16.5' to Corner 2
- F - Mag nail set in E. side power pole, 2' a.g., 46.9' to Corner 1, 91.8' to Corner 2



- ① S.E. Corner, Section 12
N.E. Corner, Section 13
T 17 N, R 1 W
5/8" diameter rebar set
 - ② S.W. Corner, Section 7
N.W. Corner, Section 18
T 17 N, R 1 E
Stone with cut X found
- Distance between monuments: 181 links = 119.46'



Kenneth E. Hedge
Kenneth E. Hedge, County Surveyor

James S. Swift
James S. Swift, IN LS 20200054
April 21, 2021

The stone marking Corner 2 was found in place and held as marking the corner. Corner 1 was set at the federal closing distance of 181 links South. A BCS Record of October 17-18, 1898 states, with respect to Corner 2, "Established Corner. 6x10x12 +. Top Rock 13x14x22 +". These stones were previously found by the Hendricks County Surveyor's Office. The top stone is located at 7 inches below grade, in line with the westerly prolongation of the approximate center of County Road 800 South to the east. The top stone is oriented in cardinal directions and measures 13 inches by 14 inches. The total height was not measured. Field notes by the Hendricks County Surveyor's Office dated November 3, 2017 state that the stone is 24 inches tall and is above another stone 6 by 10 by 12 inches. An etched + mark was ground into the top of the top stone by representatives of Hendricks County. This mark is held as the precise position Corner 2.

No specific descriptions of Corner 1 were found in the BCS Surveyor's Record beyond the original establishment of the corner as a wood post in 1819. The original notes for the federal subdivision of T17N, R1W call for an offset of 181 links (119.46 feet) between the two corners. The Hendricks County Surveyor's Office performed an extensive search at a position centered 119.46 feet south of the stone at Corner 2 in May, 2013 but did not find further evidence of the corner. It is noted that a position at 119.46 feet south of Corner 2 on the southerly prolongation of the meridian line fits well with the approximate center of the county road as it bears west from the corner. Corner 1 was established on the southerly prolongation of the line connecting Corner 2 and the standard corner 1/2 mile north (see BC Corner SW-750-000) at 119.46 feet south of Corner 2. This position falls in an area of tilled field. A 24-inch length of 5/8-inch rebar was set at this position at 14 inches deep on March 12, 2021.

Harrison Township
Boone County

Middle Township
Hendricks County

Section 12 T17N, R1W	Section 7 T17N, R1E
Section 13 T17N, R1W	Section 18 T17N, R1E

SECTION CORNER RECORD

SE 800-100

BOONE COUNTY SURVEYOR'S OFFICE

State Plane grid coordinates NAD83 (2011):

North: 1703381.38 East: 3130420.98 (U.S. survey feet)

Type of Monument: 5/8" rebar with aluminum cap stamped 'Hendricks County Surveyor Cap'

Depth: Two inches below adjacent road surface

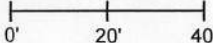
Indiana tie card references:

IN02_T17NR1E07_80 IN02_T17NR1E08_72

IN02_T17NR1E18_08 IN02_T17NR1E17_00

CORNER WITNESS DETAIL

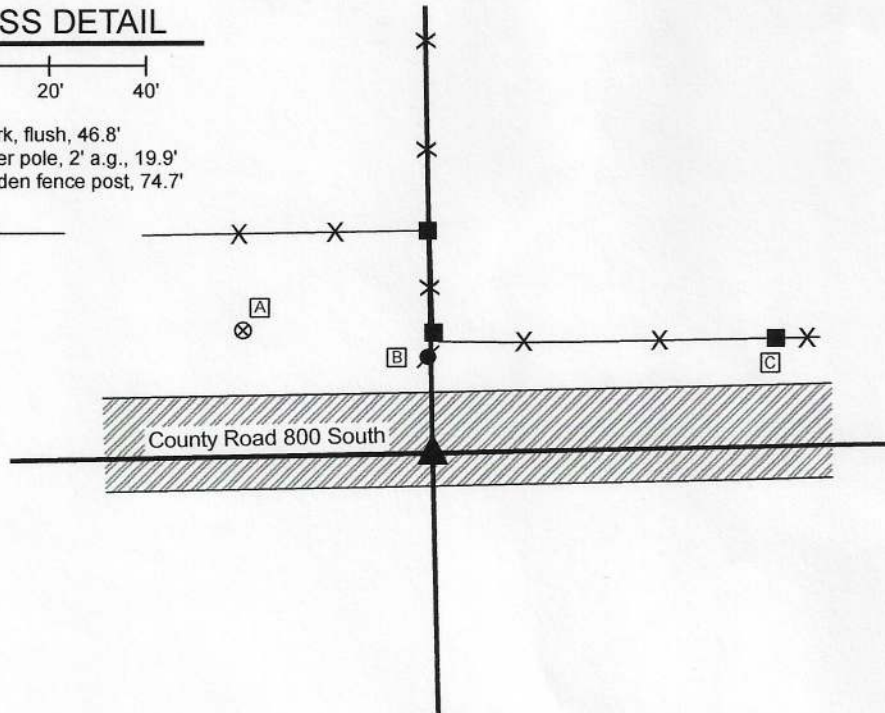
SCALE 1" = 40'



- A - Boone County witness mark, flush, 46.8'
- B - Mag nail set in S side power pole, 2' a.g., 19.9'
- C - Mag nail set in S side wooden fence post, 74.7'



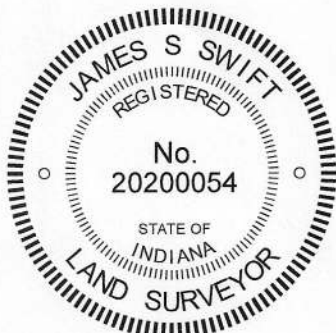
- wire fence




The rebar with Hendricks County Surveyor cap was found in place and accepted as marking the corner.

No specific descriptions of this corner were found the BCS Surveyor's Record beyond the original establishment of the corner as a wood post in 1820. No recent BCS tie cards were found referencing the corner.

A tie card provided by the Hendricks County Surveyor's Office dated March 24, 2008 states that a white limestone rock which measured 8 inches by 5 inches on top was found at 14 inches deep marking the corner. A 5/8 inch diameter rebar with metal cap stamped Hendricks County Surveyor was set over the stone. The tie card also states that a rebar with "Dodge" cap was found 4 feet north of the stone. The Hendricks County monument was found and held as the position of the corner. In 2010, a 5/8 inch rebar was also found at 3 feet north of the Hendricks County monument. This rebar is believed to remain present, but has been paved over. Both monuments are in-line with a fence to the north. The northerly rebar is close to the center of the east-west county road, but is not held as the corner.




Kenneth E. Hedge, County Surveyor


James S. Swift, IN LS 20200054
August 26, 2020

	Harrison Township	Perry Township
Boone County	Section 7 T17N, R1E	Section 8 T17N, R1E
Middle Township Hendricks County	Section 18 T17N, R1E	Section 17 T17N, R1E