

# SECTION CORNER RECORD

SW 600-1100

## BOONE COUNTY SURVEYOR'S OFFICE

State Plane grid coordinates NAD83 (2011):

Corner 1: North: 1713571.45 East: 3066759.63 (U.S. survey feet)

Corner 2: North: 1713571.24 East: 3066834.21 (U.S. survey feet)

Type of monument: Harrison, 4" disk 'Section Corner'

Depth: Six inches below adjacent road surface

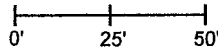
Indiana tie card references:

IN02\_T18NR2W32\_72 IN02\_T18NR2W31\_80

IN02\_T17NR2W06\_08 IN02\_T17NR2W05\_00

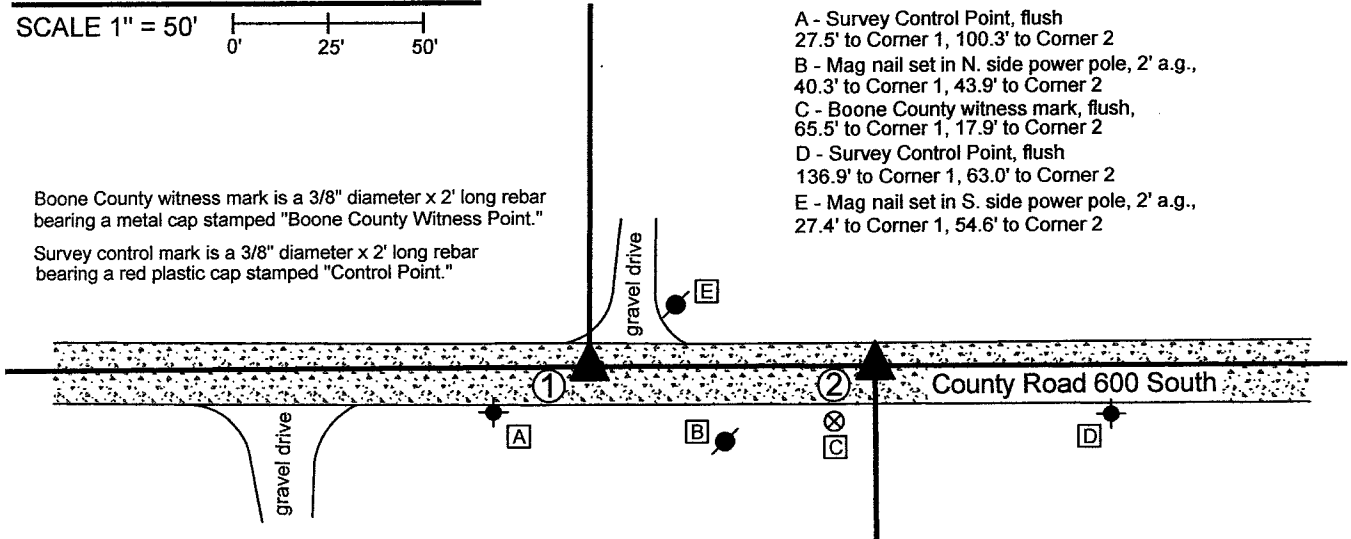
### CORNER WITNESS DETAIL

SCALE 1" = 50'



Boone County witness mark is a 3/8" diameter x 2' long rebar bearing a metal cap stamped "Boone County Witness Point."

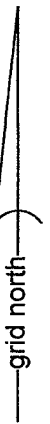
Survey control mark is a 3/8" diameter x 2' long rebar bearing a red plastic cap stamped "Control Point."



① S.E. Corner, Section 31  
S.W. Corner, Section 32  
T 18 N, R 2 W  
Harrison Monument Set

② N.E. Corner, Section 6  
N.W. Corner, Section 5  
T 17 N, R 2 W  
Harrison Monument Set

Distance between monuments:  
74.58' = 113 links



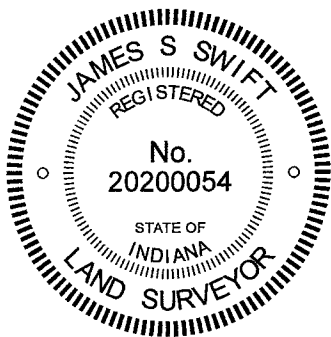
- A - Survey Control Point, flush  
27.5' to Corner 1, 100.3' to Corner 2
- B - Mag nail set in N. side power pole, 2' a.g.,  
40.3' to Corner 1, 43.9' to Corner 2
- C - Boone County witness mark, flush,  
65.5' to Corner 1, 17.9' to Corner 2
- D - Survey Control Point, flush  
136.9' to Corner 1, 63.0' to Corner 2
- E - Mag nail set in S. side power pole, 2' a.g.,  
27.4' to Corner 1, 54.6' to Corner 2

The Harrison monument at Corner 2 was set in place of a stone found. The Harrison monument at Corner 1 was set 113 links west of the stone found at Corner 2. No specific descriptions of Corner 1 were found in the Boone County Surveyor's Record beyond the original establishment of the corner as a wood post in 1819. A BCS record of December 14-15, 1870 states, with respect to Corner 2, "Reestablished. Set a Rock. 14.10.9 marked +." It is noted that the original federal field notes call for a closing offset of 113 links East for these corners.

A BCS tie card dated January 19, 1994 shows Corner 1 as a rebar and Corner 2 as a 1/2-inch rebar at the federal closing distance of 74.58 feet (113 links) apart. Corner 1 is shown in-line with a post on the north side of the road.

These corners were both excavated on March 19, 2021. Prior to excavation, the rebars shown on the 1994 tie card were found, slightly disturbed. Excavation at Corner 1 did not reveal further evidence of the corner. Excavation at Corner 2 revealed a large stone found at 6 inches deep in the road, slightly northwest of the 1/2-inch rebar referenced in the 1994 tie card. The top of the stone, as found was 18 inches E-W by 16 inches N-S. The stone was removed from the road and found to be, in full measure, 26 inches tall by 24 inches E-W by 16 inches N-S. The stone was fully embedded in the clay layer below the road bed, was vertical and oriented in cardinal directions. No specific marks were observed on the stone. This is not the monument referenced in the 1870 BCS record but is clearly a monument set with the purpose of marking the corner. The top, center of the stone was held as the specific position of Corner 2. The stone was removed and replaced with a Harrison monument in the same position on March 19, 2021. The position of Corner 1 was established on the westerly prolongation of the line connecting Corner 2 with a Harrison monument marking the standard corner 1/2 mile east (see BCS Corner SW 600-1050) at the record federal offset of 113 links or 74.58 feet. A Harrison monument was set at this position on April 19, 2021. It is noted that this position falls in-line with the existing occupation line to the north, which is trees with fragments of fence.

With respect to the monuments found prior to excavation and called in the 1994 tie card, the rebars (removed during excavation) had been 2.5 feet south and 2.5 feet east of the respective positions marked with Harrison monuments.



*Kenneth E. Hedge*  
Kenneth E. Hedge, County Surveyor

*James S. Swift*  
James S. Swift, IN LS 20200054  
April 21, 2021

Jackson Township

Section 31 T18N, R2W	Section 32 T18N, R2W
Section 6 T17N, R2W	Section 5 T17N, R2W

# SECTION CORNER RECORD

SW 700-1100

## BOONE COUNTY SURVEYOR'S OFFICE

State Plane grid coordinates NAD83 (2011):

North: 1708116.23 East: 3066866.31 (U.S. survey feet)

Type of monument: Harrison, 4" disk 'Section Corner'

Depth: One inch below adjacent road surface

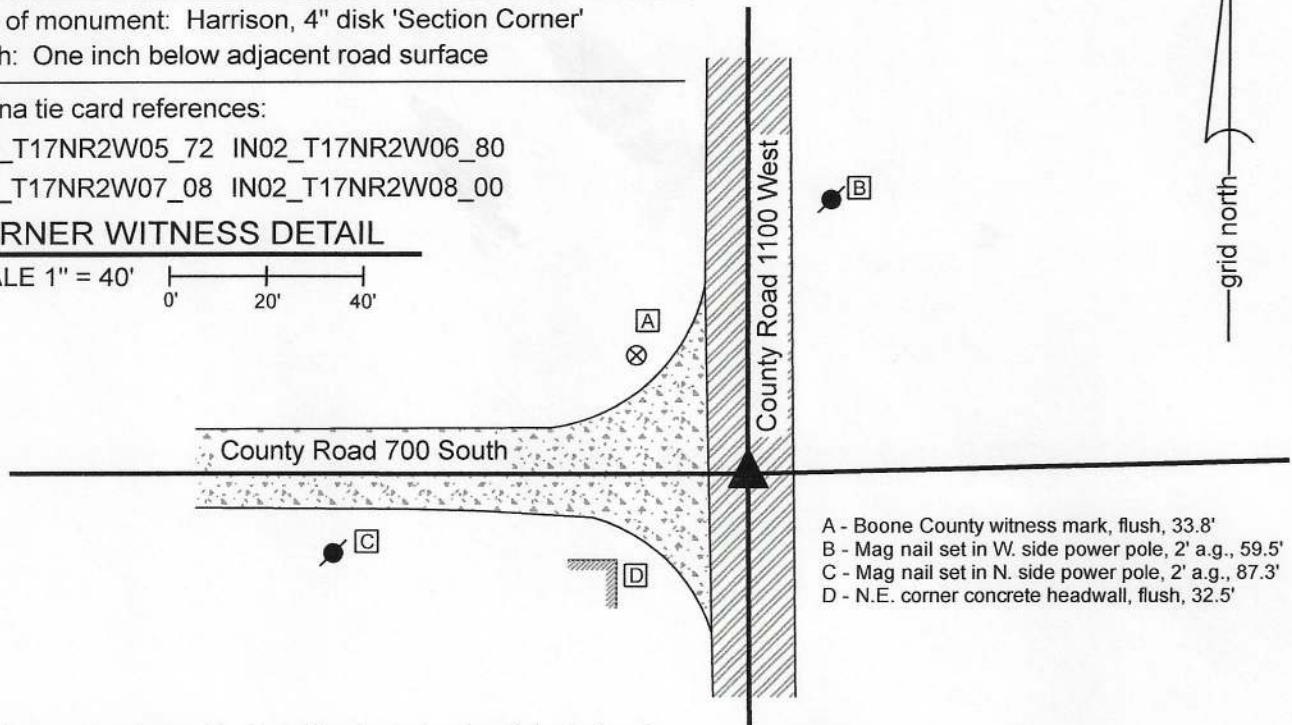
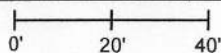
Indiana tie card references:

IN02\_T17NR2W05\_72 IN02\_T17NR2W06\_80

IN02\_T17NR2W07\_08 IN02\_T17NR2W08\_00

### CORNER WITNESS DETAIL

SCALE 1" = 40'



- A - Boone County witness mark, flush, 33.8'
- B - Mag nail set in W. side power pole, 2' a.g., 59.5'
- C - Mag nail set in N. side power pole, 2' a.g., 87.3'
- D - N.E. corner concrete headwall, flush, 32.5'

The Harrison monument was set in place of a rebar and a piece of vlay tile found.

No specific descriptions of this corner were found in the BCS Surveyor's Record. A BCS tie card dated August 10, 1988 calls the corner as "Stone found 3' deep. Set 1/2" iron rod on top of stone."

This corner was excavated on October 22, 2020. Prior to excavation, a 1/2 inch rebar was found at the surface of the road. The position of the found rebar fit precisely with several distance ties shown on the 1988 tie card. It is noted that prior to excavation, based on the experience of several hundred excavations in Boone County roads, the stated three-foot depth of the stone seemed extreme. It was expected that the bottom of the road bed would be at closer to 12 to 18 inches deep, based on the natural level of the surrounding ground. Excavation revealed that the expected depth of the road bed was correct, as the clay layer below the road bed is at approximately one foot below the current surface of the road. However, it was clearly evident that the clay immediately below the rebar had been previously disturbed. Further manual excavation directly below the position of the rebar indicated that the clay had been disturbed to a depth of approximately 20 inches. Below that, the clay appeared undisturbed. Probing below the 20 inch depth clearly indicated the presence of a stone. Further manual excavation revealed not a stone, but a piece of clay tile, at 27 inches deep. The tile was horizontal, concave side down, and oriented in cardinal directions, being 12 inches N-S by 5 inches E-W. The piece of tile was removed and no further hard objects were observed below with a probe. It is evident that the "stone" found in 1988 was actually the piece of tile. Apparently the three foot depth reported on the tie card was an estimation, as the piece of tile was found at 27 inches below the surface of the road. Based on the evidence of the disturbed and undisturbed sections of clay, it is concluded that the crew in 1988 most likely detected a hard object with a probe and determined it to be a stone. It does not appear that they actually exposed the tile. It is noted that Brandon Miller, excavator extraordinaire, at first believed the hard object detected with the probe was a stone. He has probed many tiles in his career and has noticed that they feel different than rocks. This object, being firmly embedded in the clay, concave side down, felt more like a stone than a piece of tile, when hit with the probe. After finding the piece of tile, a full excavation, being a five foot square area centered on the rebar, was completed to the depth of the clay layer below the road. No further evidence of the corner was found. The piece of tile is not typical evidence of a Boone County section corner, both in its physical character, being clay tile, and depth, being over a foot into the clay. However, it did appear to have been purposely set to mark the corner, has been held as marking the corner since 1988, and no contrary evidence of the corner was found. The position of the rebar and piece of tile were held as marking the corner. Both objects were removed and a Harrison monument was set in the position of the rebar as found at the surface of the road.

This corner was originally established as a wood post in 1820.



*Kenneth E. Hedge*  
Kenneth E. Hedge, County Surveyor

*James S. Swift*  
James S. Swift, IN LS 20200054

October 28, 2020

Jackson Township

Section 6 T17N, R2W	Section 5 T17N, R2W
Section 7 T17N, R2W	Section 8 T17N, R2W

# SECTION CORNER RECORD

SW 700-1150

## BOONE COUNTY SURVEYOR'S OFFICE

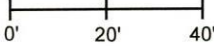
State Plane grid coordinates NAD83 (2011):  
North: 1708116.46 East: 3064217.08 (U.S. survey feet)

Type of monument: Harrison, 4" disk 'Section Corner'  
Depth: Six inches below adjacent road surface

Indiana tie card references:  
IN02\_T17NR2W07\_04 IN02\_T17NR2W06\_76

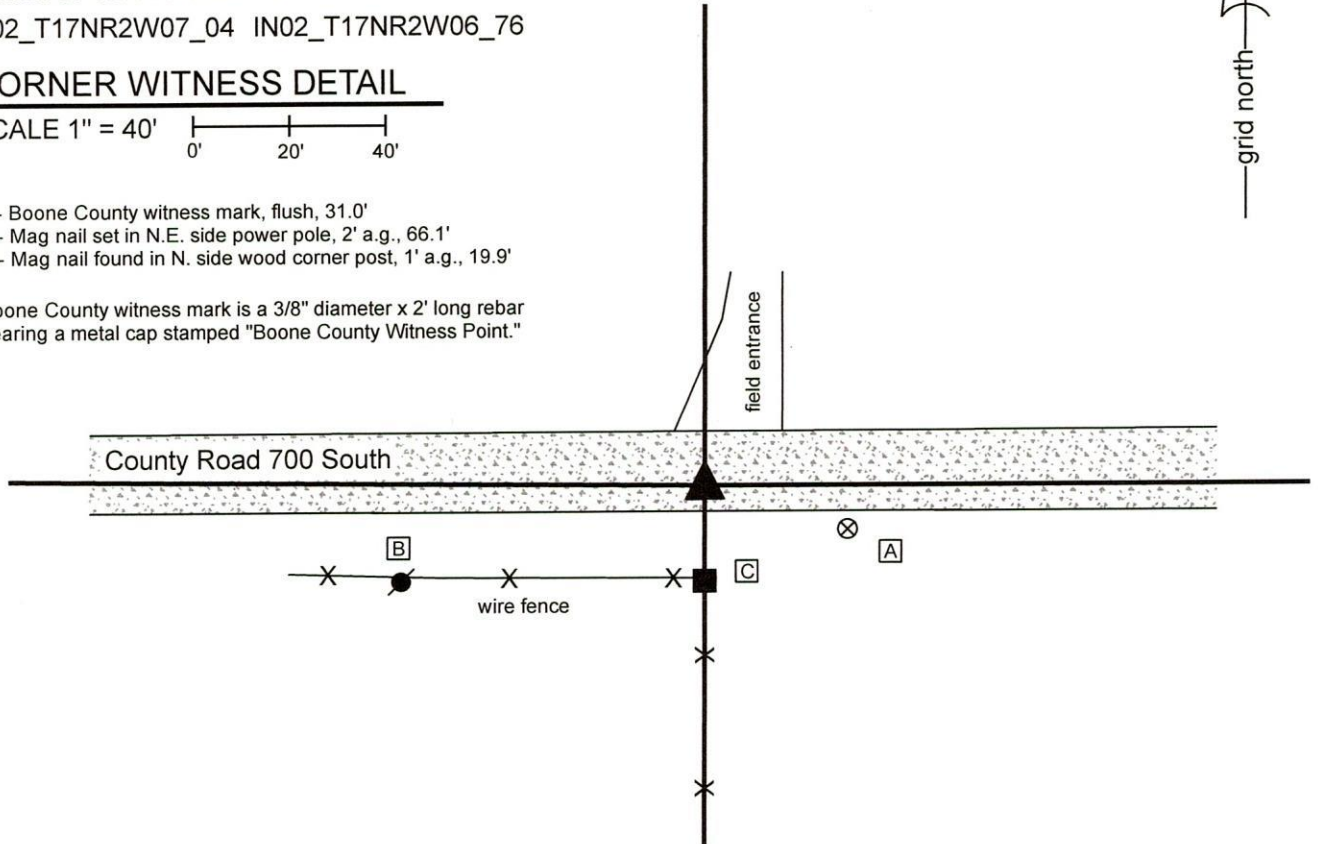
### CORNER WITNESS DETAIL

SCALE 1" = 40'

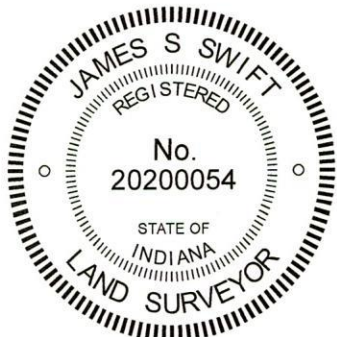


- A - Boone County witness mark, flush, 31.0'
- B - Mag nail set in N.E. side power pole, 2' a.g., 66.1'
- C - Mag nail found in N. side wood corner post, 1' a.g., 19.9'


Boone County witness mark is a 3/8" diameter x 2' long rebar bearing a metal cap stamped "Boone County Witness Point."



The Harrison Monument was set in place of a stone found. A BCS record of February, 1871 states, with respect to this corner, "Reest. from S.W. Beech. Set a Rock 24.16.9 +." A BCS tie card dated December 9, 1994 shows the corner as "stone flush w/ road." This corner was excavated on March 4, 2020. Prior to excavation, a Harrison monument was found at 6 inches below grade. Though Harrison monuments are typically set by the County Surveyor's Office or representatives thereof, no information was found indicating the source of this monument and it was found to be north of the position of the corner shown by the remaining distance ties shown on the 1994 tie card. Excavation revealed a stone found near the surface of the road, in agreement with the 1994 tie card. The stone measured 18 inches E-W by 10 inches N-S by 18 inches tall and was partially embedded in the clay layer below the road bed. This is not the same stone described in the 1871 record. Excavation of an area extending approximately 1 foot south, 4 feet north, 1 foot east and 3 feet west of the stone revealed no further evidence of the corner. The stone was held as marking the corner. The stone was removed from the road bed and a Harrison monument was set in the position of the top, center of the stone as originally found. This is in close agreement with the position shown on the 1994 tie card. The Harrison monument found prior to excavation was removed during excavation. This monument had been 2.4 feet north and 0.6 foot west of the position held as the corner. This corner was originally established as a wood post in 1820.



  
Kenneth E. Hedge, County Surveyor

  
James S. Swift, IN LS 20200054  
March 17, 2020

Jackson Township

