

# SECTION CORNER RECORD

SW 600-500

## BOONE COUNTY SURVEYOR'S OFFICE

State Plane grid coordinates NAD83 (2011):

Corner 2: North: 1713672.76 East: 3098619.36 (U.S. survey feet)

Corner 2: Type of monument: Harrison, 4" disk 'Section Corner'

Depth: One inch below adjacent road surface

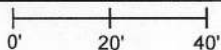
Indiana tie card references:

IN02\_T18NR1W32\_72 IN02\_T18NR1W31\_80

IN02\_T17NR1W06\_08 IN02\_T17NR1W05\_00

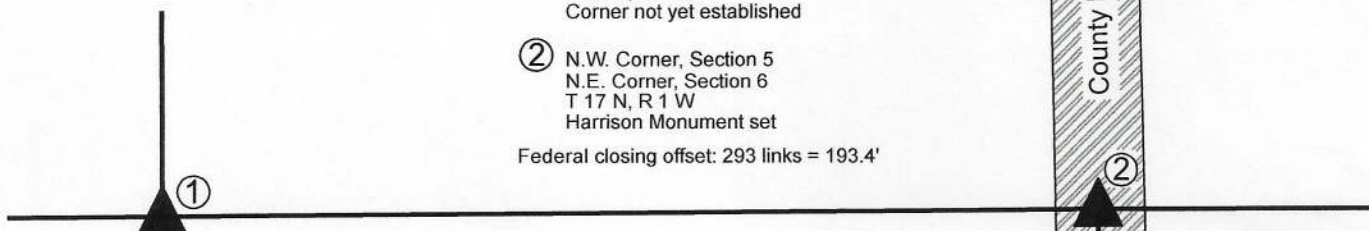
### CORNER WITNESS DETAIL

SCALE 1" = 40'



- ① S.E. Corner, Section 31  
S.W. Corner, Section 32  
T 18 N, R 1 W  
Corner not yet established
- ② N.W. Corner, Section 5  
N.E. Corner, Section 6  
T 17 N, R 1 W  
Harrison Monument set

Federal closing offset: 293 links = 193.4'



Ties to Corner 2 only:

- A - Boone County witness mark, flush, 51.3'
- B - Mag nail set in W. side power pole, 2' a.g., 140.8'
- C - Mag nail set in W. side power pole, 2' a.g., 92.9'
- D - Mag nail set in E. side wood corner post, 2' a.g., 74.6'

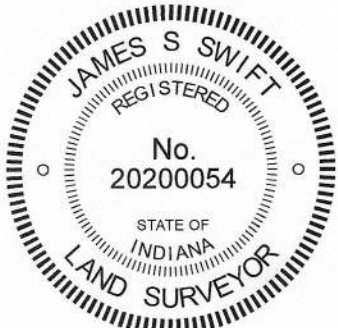


The Harrison monument at Corner 2 was set in place of a Mag Nail and vertical section of railroad rail found. The position of Corner 1 has not yet been precisely established. Corner 1 falls within a residential yard. No local physical evidence of the corner has been found. The precise position of Corner 1 will be established after adjacent corners have been established.

No specific description of Corner 2 was found in the BCS Surveyor's Record beyond the establishment of the corner in 1820. A BCS tie card dated August 9, 1968 shows Corner 2 established in the center of County Road 500 West, in-line with a post on the east side of the road. The tie card states "No Stone." It is noted that the north-south county road does not jog in the east-west dimension as it crosses the township line, but does shift to the west further north, being generally in line with the section lines in Township 18 North at a point approximately 1800 feet north of the corner.

This corner was excavated on October 30, 2020. Prior to excavation, a Mag Nail was found at 4 inches deep in the roadway. Excavation revealed a vertical section of railroad rail found directly below the nail. The rail is believed to be the monument established at the time the 1968 tie card was made. Further excavation of an area extending 2.5 feet north, 2.5 feet south, 3 feet east and 2 feet west of the nail and rail revealed no further evidence of the corner. The bottom of the road bed is at approximately 16 inches below the surface.

Excavation was performed to 18 inches deep. The nail and rail were accepted as the best available evidence of the corner and held as marking the corner. Both monuments were removed and a Harrison monument was set in the same position on October 30, 2020.



*Kenneth E. Hedge*  
Kenneth E. Hedge, County Surveyor

*James S. Swift*  
James S. Swift, IN LS 20200054  
November 10, 2020

Jackson Township

Section 31 T18N, R1W	Section 32 T18N, R1W
Section 6 T17N, R1W	Section 5 T17N, R1W

# SECTION CORNER RECORD

SW 600-600

## BOONE COUNTY SURVEYOR'S OFFICE

State Plane grid coordinates NAD83 (2011):

North: 1713661.67 East: 3093370.48 (U.S. survey feet)

Type of monument: Harrison, 4" disk 'Section Corner'

Depth: Six inches below adjacent road surface

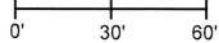
Indiana tie card references:

IN02\_T18NR2W36\_80 IN02\_T18NR1W31\_72

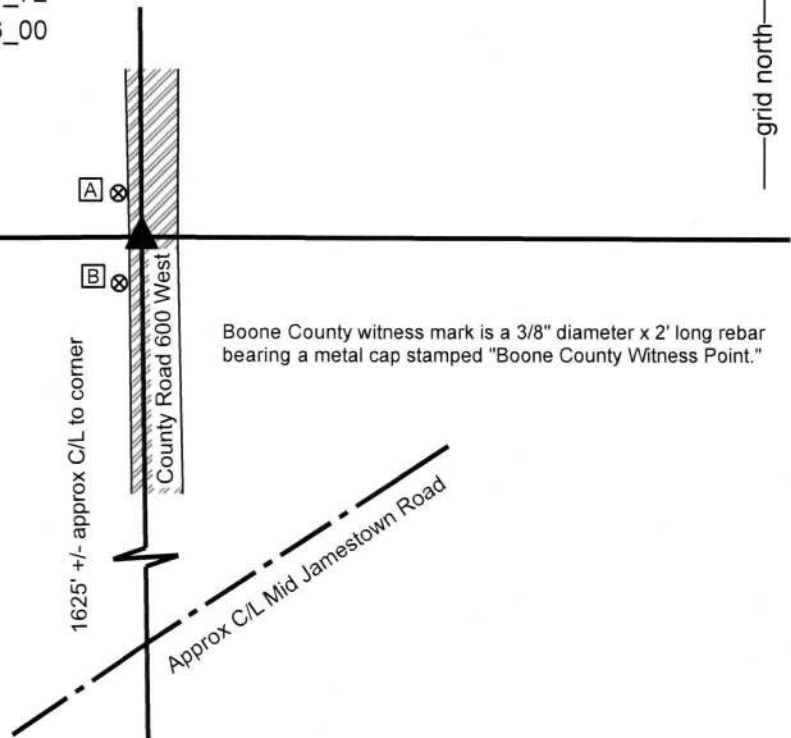
IN02\_T17NR2W01\_08 IN02\_T17NR1W06\_00

### CORNER WITNESS DETAIL

SCALE 1" = 60'



- A - Boone County witness mark, flush, 15.5'
- B - Boone County witness mark, flush 16.0'



Boone County witness mark is a 3/8" diameter x 2' long rebar bearing a metal cap stamped "Boone County Witness Point."

The Harrison monument was set over a stone found.

This corner represents the common corner of townships 17 and 18 north, ranges 1 and 2 west, Second Principal Meridian. No specific descriptions of the corner were found in the BCS Surveyor's Record beyond the original establishment of the corner in 1819. No recent BCS tie cards were found referencing the corner, nor were any surveys found in the Office of the Boone County Recorder which reference the corner.

This corner was excavated on September 13, 2019. Prior to excavation, an approximate position for the corner was established with respect to existing fence and post evidence to the east and west. Though no above ground evidence was visible in the immediate vicinity of the corner, beyond the existing north-south roadway, the remote evidence to the east and west worked well from both directions, with minimal uncertainty. Excavation in the area of the computed probable position for the corner revealed three stones found, all in a stack. The top stone was found at 12 inches deep, being a small stone located entirely within the fill material of the road. The second stone was found at 17 inches deep, also in the fill material of the road. This stone measured 10 inches E-W by 12 inches N-S by 9 inches thick. The third stone was found at 27 inches deep directly below the top two. This stone was embedded in the clay layer below the road. It measured 10 inches N-S by 10 inches E-W by 8 inches thick and bore a distinct etched "+" mark on the top, near the northwest edge of the stone. The stones were accepted as representing the best evidence of the corner and were held as marking the corner. The top two stones were removed and the bottom stone was left in place. A Harrison monument was set over the top, center of the bottom stone, slightly southeast of the etched mark. It is noted that the stones were found near the west edge of the road but well in line with the center of the road from a point several hundred feet north to the corner 1/2 mile north. No metal monuments were found prior to or during excavation.



*Kenneth E. Hedge*  
Kenneth E. Hedge, County Surveyor

*James S. Swift*  
James S. Swift, IN LS 20200054  
September 25, 2019

Jackson Township

Section 36 T18N, R2W	Section 31 T18N, R1W
Section 1 T17N, R2W	Section 6 T17N, R1W

# SECTION CORNER RECORD

## BOONE COUNTY SURVEYOR'S OFFICE

SW 650-500

State Plane grid coordinates NAD83 (2011):  
 North: 1710889.04 East: 3098676.27 (U.S. survey feet)

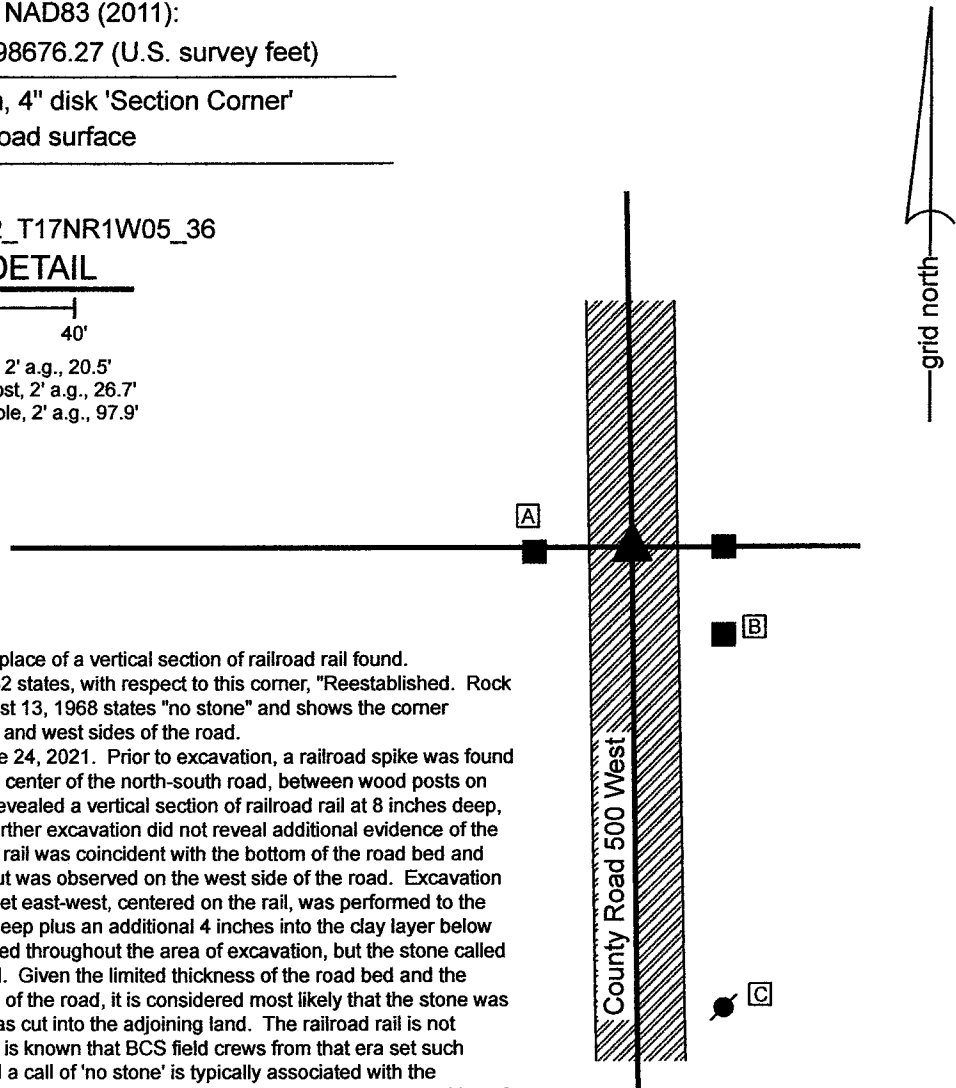
Type of monument: Harrison, 4" disk 'Section Corner'  
 Depth: Flush with adjacent road surface

Indiana tie card references:  
 IN02\_T17NR1W06\_44 IN02\_T17NR1W05\_36

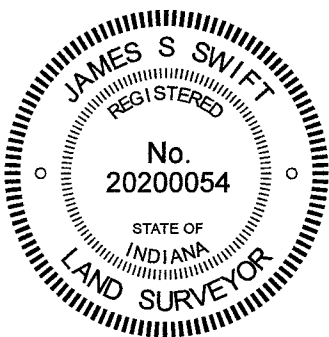
### CORNER WITNESS DETAIL

SCALE 1" = 40'

- A - Mag nail set in E. side wood post, 2' a.g., 20.5'
- B - Mag nail set in N.W. side wood post, 2' a.g., 26.7'
- C - Mag nail set in N.E. side power pole, 2' a.g., 97.9'



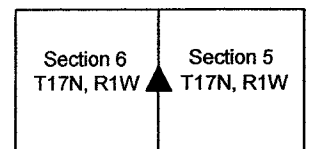
The Harrison monument was set in place of a vertical section of railroad rail found. A BCS record of December 10, 1862 states, with respect to this corner, "Reestablished. Rock 13,9,9." A BCS tie card dated August 13, 1968 states "no stone" and shows the corner centered between posts on the east and west sides of the road. This corner was excavated on June 24, 2021. Prior to excavation, a railroad spike was found at one inch deep in the approximate center of the north-south road, between wood posts on each side of the road. Excavation revealed a vertical section of railroad rail at 8 inches deep, directly below the railroad spike. Further excavation did not reveal additional evidence of the corner. It is noted that the top of the rail was coincident with the bottom of the road bed and that evidence of a previous grade cut was observed on the west side of the road. Excavation of an area 5 feet north-south by 5 feet east-west, centered on the rail, was performed to the bottom of the road bed at 8 inches deep plus an additional 4 inches into the clay layer below the road. Probing was also performed throughout the area of excavation, but the stone called for in the 1862 record was not found. Given the limited thickness of the road bed and the evidence of the cut on the west side of the road, it is considered most likely that the stone was removed at the time the road bed was cut into the adjoining land. The railroad rail is not mentioned in the 1968 tie card but it is known that BCS field crews from that era set such monuments to mark the corners and a call of 'no stone' is typically associated with the presence of a found rail. Hence, the rail is held as the monument set in 1968. The position of the rail works well with the relative positions of proximate corners and works well with the evidence of the fence posts on the east and west sides of the road. The railroad rail and railroad spike were accepted as the best available evidence of the corner. Both monuments were removed during excavation and replaced with a Harrison monument in the same horizontal position on June 24, 2021. This corner was originally established as a wood post in 1820.



*Kenneth E. Hedge*  
 Kenneth E. Hedge, County Surveyor

*James S. Swift*  
 James S. Swift, IN LS 20200054  
 September 8, 2021

Jackson Township





# SECTION CORNER RECORD

SW 700-550

## BOONE COUNTY SURVEYOR'S OFFICE

State Plane grid coordinates NAD83 (2011):

North: 1708227.02 East: 3096073.92 (U.S. survey feet)

Type of monument: 5/8 inch diameter rebar with aluminum cap stamped 'Boone County Surveyor' 24 inches long, set over stone

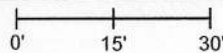
Depth: five inches above surrounding ground

Indiana tie card references:

IN02\_T17NR1W06\_76 IN02\_T17NR1W07\_04

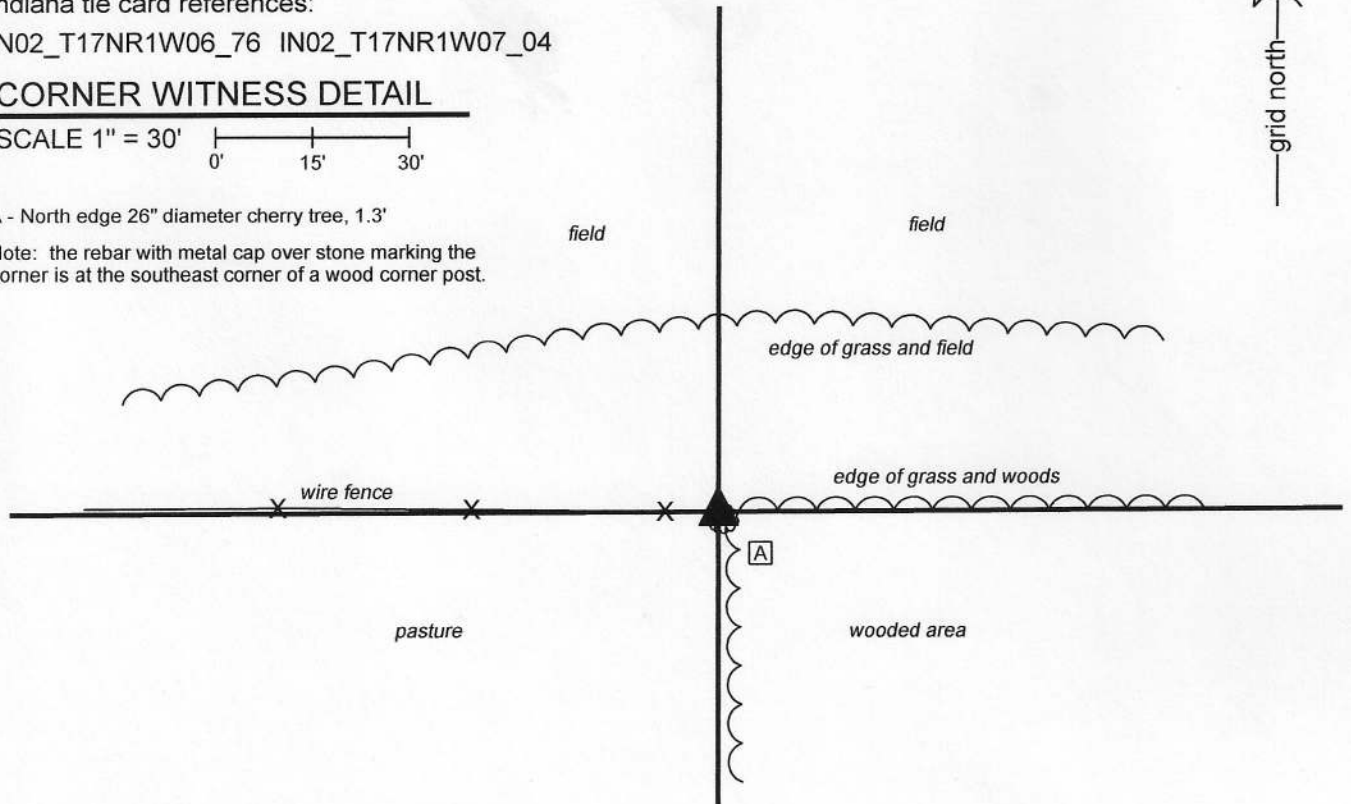
### CORNER WITNESS DETAIL

SCALE 1" = 30'



A - North edge 26" diameter cherry tree, 1.3'

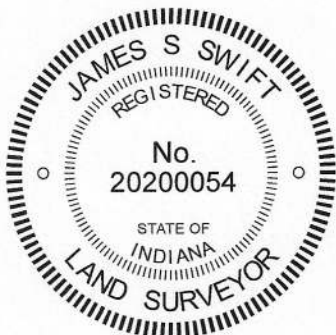
Note: the rebar with metal cap over stone marking the corner is at the southeast corner of a wood corner post.



The rebar with metal cap was set over a stone found.

A BCS record of December 11-12, 1862 states, with respect to this corner, "Reest. Set Rock 10.8.6 1/2." No recent BCS tie cards were found referencing this corner.

Excavation was performed at this corner on November 13, 2020. Prior to excavation, a wood corner post was found at the easterly terminus of a fence to the west. The post had fencing cut-off toward the east and south, though fences are no longer standing in those directions. Excavation around the post revealed the stone described in the 1862 record at 19 inches deep, adjacent to the southeast edge of the wood corner post. The stone measured 8 inches N-S by 6 1/2 inches E-W. The full height of the stone was not exposed but another rock was found with a probe at 10 inches below the top of the found stone. A chiseled mark was found on the top of the stone. The position of the stone and post fit well with the relative positions of proximate corners with respect to distances report in the original federal field notes for the township. The stone was accepted as being the same monument described in the 1862 record and was held as marking the corner. The stone was left in place. The post remains stable in the ground and represents the western end of a fence which currently enclose a cattle pasture to the southwest. The stone is too close to the post to set a Harrison monument at this corner. The top portion of the stone was embedded in concrete and a 24 inch length of 5/8 inch rebar was set directly over the mark on the top of the stone. The rebar is encased in a substantial amount of concrete. The rebar protrudes 5 inches out of the ground and is adjacent to the southeast corner of the post. The rebar is intended to mark the corner and is not a witness to the post.



*Kenneth E. Hedge*  
Kenneth E. Hedge, County Surveyor

*James S. Swift*  
James S. Swift, IN LS 20200054  
November 18, 2020

Jackson Township

Section 6  
T17N, R1W

Section 7  
T17N, R1W