

SECTION CORNER RECORD

SE 600-700

BOONE COUNTY SURVEYOR'S OFFICE

State Plane grid coordinates NAD83 (NSRS 2007):

Corner 1: North: 1714752.63 East: 3162095.24 (U.S. survey feet)

Corner 2: North: 1714760.44 East: 3162364.69 (U.S. survey feet)

Type of monument: Harrison, 4" disk 'Section Corner'

Depth: One inch deep (corner 1), three inches deep (corner 2)

Indiana tie card references:

IN02_T17NR2E05_00 IN02_T17NR2E06_08

IN02_T18NR2E31_80 IN02_T18NR2E32_72

- ① S.E. Corner, Section 31
S.W. Corner, Section 32
T 18 N, R 2 E
- ② N.W. Corner, Section 5
N.E. Corner, Section 6
T 17 N, R 2 E



CORNER WITNESS DETAIL

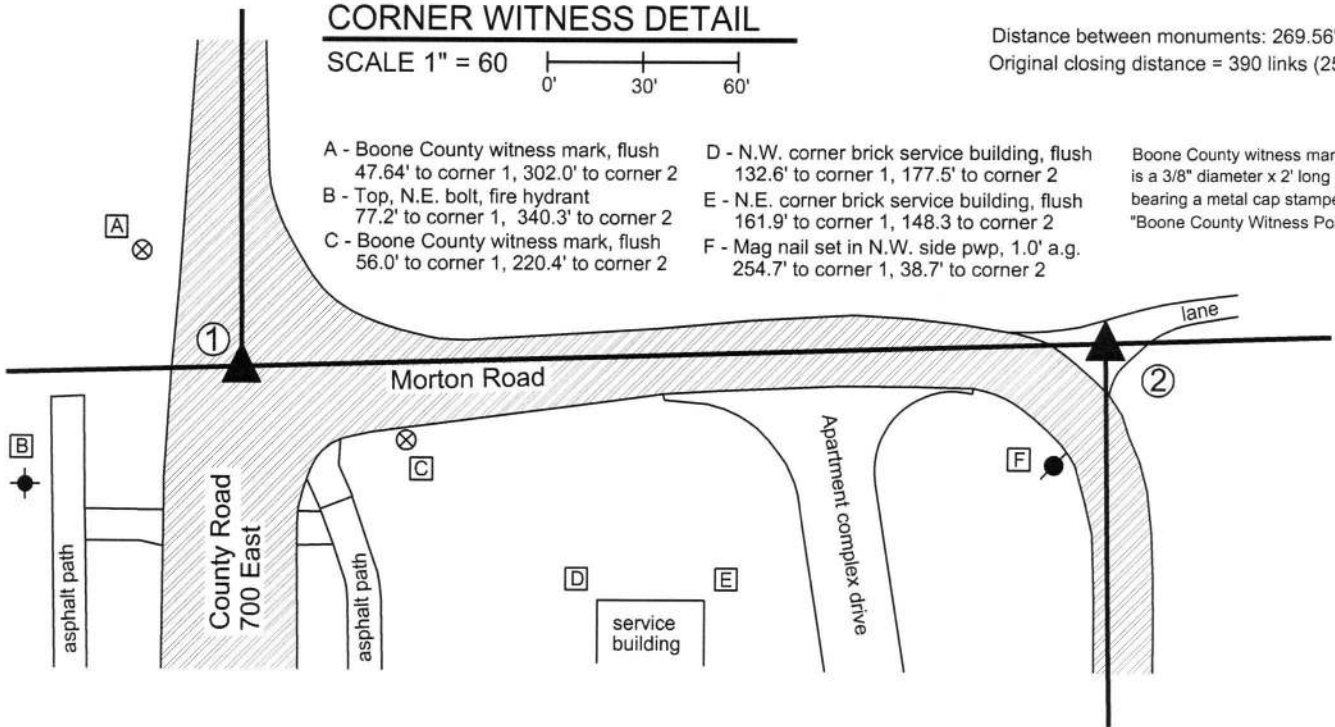
SCALE 1" = 60'

Distance between monuments: 269.56'
Original closing distance = 390 links (257.4')

- A - Boone County witness mark, flush 47.64' to corner 1, 302.0' to corner 2
- B - Top, N.E. bolt, fire hydrant 77.2' to corner 1, 340.3' to corner 2
- C - Boone County witness mark, flush 56.0' to corner 1, 220.4' to corner 2

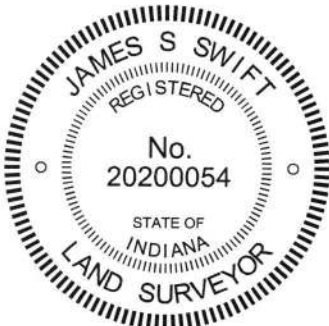
- D - N.W. corner brick service building, flush 132.6' to corner 1, 177.5' to corner 2
- E - N.E. corner brick service building, flush 161.9' to corner 1, 148.3' to corner 2
- F - Mag nail set in N.W. side pwp, 1.0' a.g. 254.7' to corner 1, 38.7' to corner 2

Boone County witness mark is a 3/8" diameter x 2' long rebar bearing a metal cap stamped "Boone County Witness Point."



The Harrison monument at Corner 1 was set in a calculated position in the same position as a rebar which formerly marked the corner. A BCS tie card dated May 19, 1994 shows the corner as a 5/8 inch rebar. Numerous surveys have held this monument as the corner, including a survey by American Consulting, Inc. recorded in Survey Book 7, pages 21-22 in the Boone County Recorder's Office. It is believed that the rebar was removed during road construction in 2006. The position of the rebar was computed with respect to the relative locations of other monuments shown on the above referenced survey and other surveys by American Consulting, Inc. and American Structurepoint, Inc. (same company, different names.) A Harrison Monument was set at the calculated position in 2009.

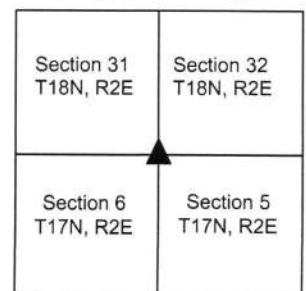
A monument called on many surveys to be a rebar with a yellow cap, but which was actually an iron pipe with a yellow survey cap (markings illegible), has long been held as marking Corner 2. The area around the pipe was excavated on September 9, 2013. Excavation of an area extending 3 feet north, 3 feet south, 2.5 feet east and 2.5 feet west of the iron pipe yielded remnants of a wood stake approximately one foot south of the pipe. No other credible evidence of the corner was found during excavation. The iron pipe (called rebar on surveys) was held to define the east-west position of the corner. The north-south position of the pipe was not held, as the monument falls slightly south of the township line connecting Corner 1 with the standard corner approximately 1/2 mile to the east. The corner was established along the range line and a Harrison monument was set at this position, 0.4 foot north of the original position of the iron pipe with cap.



Kenneth E. Hedge, County Surveyor

James S. Swift, IN LS 20200054
March 23, 2017

Eagle Township



SECTION CORNER RECORD

SE 600-750

BOONE COUNTY SURVEYOR'S OFFICE

State Plane grid coordinates NAD83 (2011):

Corner 1: North: 1714830.49 East: 3164779.58 (U.S. survey feet)

Corner 2: North: 1714837.82 East: 3165016.04 (U.S. survey feet)

Corner 1: Harrison, 4" disk 'Section Corner', 6" below grade

Corner 2: Harrison, 4" disk 'Section Corner', flush

Indiana tie card references:

IN02_T18NR2E32_76

IN02_T17NR2E05_04

CORNER WITNESS DETAIL

SCALE 1" = 100'

Ties to Corner 1, S 1/4 corner Sec. 32, T18N, R2E

A - Rebar with aluminum cap, intersection of Beekman Place and Beekman Terrace, 177.02'

TIES TO STRUCTURE

6683 BEEKMAN PL, TOWNHOME C

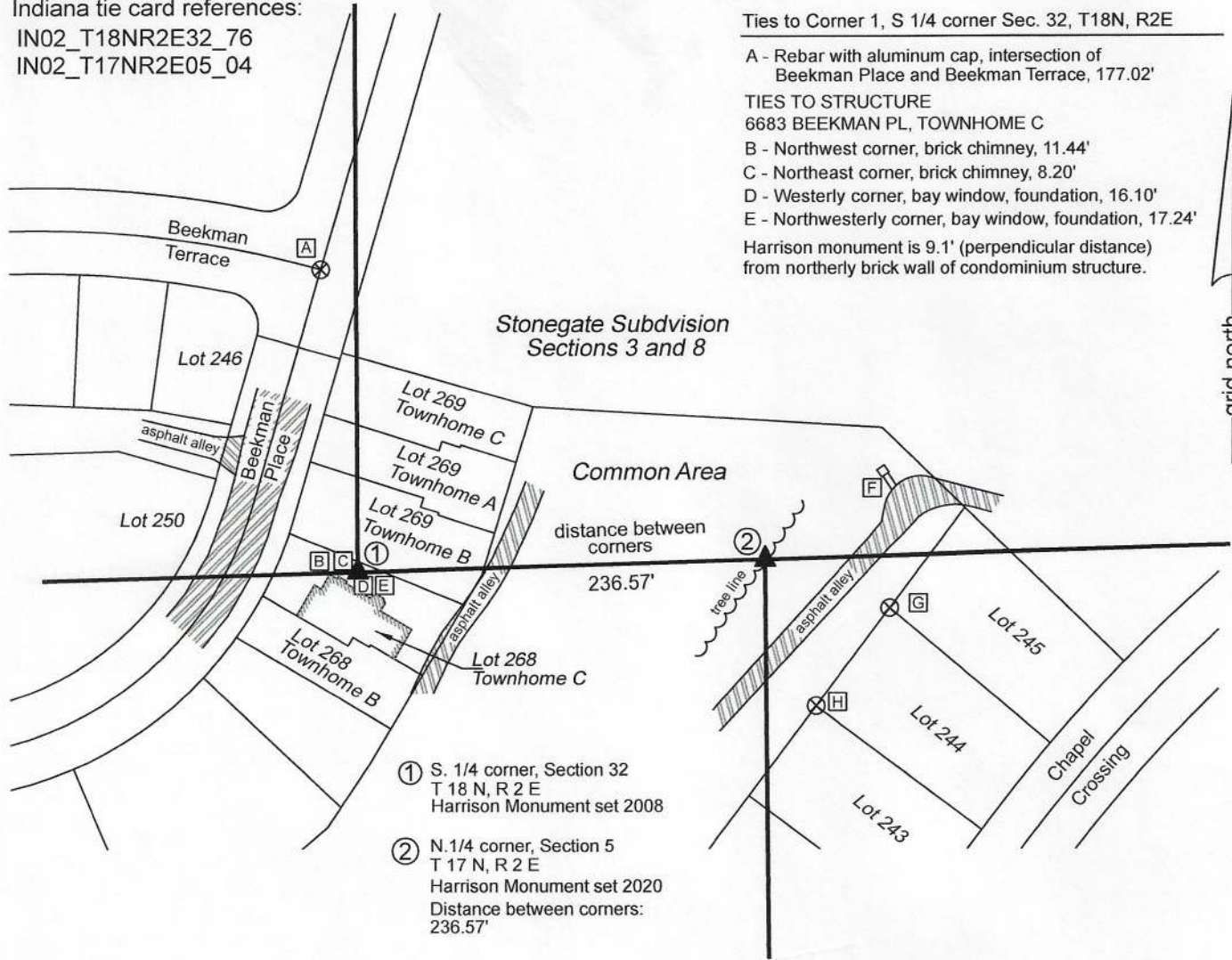
B - Northwest corner, brick chimney, 11.44'

C - Northeast corner, brick chimney, 8.20'

D - Westerly corner, bay window, foundation, 16.10'

E - Northwesterly corner, bay window, foundation, 17.24'

Harrison monument is 9.1' (perpendicular distance) from northerly brick wall of condominium structure.



① S. 1/4 corner, Section 32
T 18 N, R 2 E
Harrison Monument set 2008

② N. 1/4 corner, Section 5
T 17 N, R 2 E
Harrison Monument set 2020
Distance between corners:
236.57'

Ties to corner 2, N 1/4 corner Sec. 5, T17N, R2E

F - south corner, concrete base, community mailbox stand, 82.6'

G - 5/8 inch rebar with B.L.N. cap, flush, 77.5'

H - 5/8 inch rebar with B.L.N. cap, flush, 90.3'



Kenneth E. Hedge
Kenneth E. Hedge, County Surveyor

James S. Swift
James S. Swift, IN LS 20200054

September 2, 2020 (previous @ 9/22/2010)

Page 1 of 2

See page 2 for explanation of findings

Eagle
Township

Section 32
T18N, R2E

Section 05
T17N, R2E

SECTION CORNER RECORD

SE 600-750

BOONE COUNTY SURVEYOR'S OFFICE

The Harrison monument at Corner 1 was set in place of an old wood corner post.

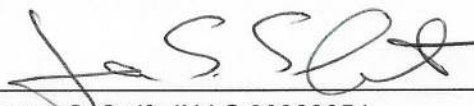
This corner falls within Stonegate Section VIII but is not shown on the plat. The old corner post was still present in the summer of 2007, at the intersection of the old tree lines marking historical evidence of occupation along the section lines to the north, east and west. A 3/4 inch diameter rebar was found at the northeast edge of the post and two stones were visible at the north and northwest edges of the post, respectively. By the summer of 2008 the post had been cut off at ground level and the adjoining lots appeared to be under preparation for construction of the proposed townhomes. The base of the post was removed on September 24, 2008, during which process numerous rocks were found around the post, all of which were accepted as being brace rocks rather than section corner stones. The Harrison monument was set in the position of the center of the base of the post.

In 2008, neither a monument nor physical evidence were found in the immediate vicinity of the closing corner. Several monuments including a rebar with Dodge cap and an iron pipe were known to have been located approximately 236.5' feet east of standard corner prior to disruptions associated with construction of Stonegate subdivision, as shown on an unrecorded survey by Weihe Engineers, Job. No. 9900920, dated 4/24/2002, which represents a preliminary survey to the Stonegate development. The original Stonegate plat (Plat Book 10, page 9, Boone County Recorder) shows a rebar set at Corner 2 and an iron pipe found 1.75 feet south. Additional plats for the same development show a rebar found and pipe 1.8 feet south. Though they had not been found as of 2008, the iron pipe and rebar were both present, approximately 18 inches deep. Evidently, fill material had been placed above them and they did not register on metal detection devices. During recent retracement of property in the vicinity, Professional Surveyor James Foster, LS 2050003, did discover the monuments. Excavation on August 26, 2020, based on the information shared by Mr. Foster, revealed a 5/8 inch rebar and a 1 inch diameter iron pipe found at 18 inches deep. Excavation also revealed a stone found at 24 inches deep. The top of stone measured 6 inches N-S by 8 inches E-W. The total dimensions of the stone were not measured. It is not known whether this represents the same stone as is described in a BCS record of April 5, 1853 which describes the corner as "A Rock that was set." The rebar is at the northeast edge of the stone and the iron pipe is adjacent to, and slightly east of, the rebar. The position of the corner was established along the township line as defined by Corner 1 and the southeast corner of section 32, T18N, R2E (see BCS Corner SE 600-800), 0.6 foot south of the found rebar. A Harrison monument was set at this position on August 26, 2020. This position falls above the east edge of the stone, approximately 0.4 foot east of the evident high point of the stone. The stone, rebar and pipe were all left in the ground, with the tops of all three objects encased in concrete.

The coordinates shown for Corner 1 are updated since the previous 2010 revision of this corner record. Corner 1 was originally established as a wood post in 1819. Corner 2 is not an original federal corner. The average of the township line offsets at the northeast and northwest corners of section 5 is 341.5 links or 225.4 feet. The separation of the monuments as established is 236.57 feet, close to the previously noted offset of 236.50, as discussed above.




Kenneth E. Hedge, County Surveyor


James S. Swift, IN LS 20200054

September 2, 2020 (previous @ 9/22/2010)

Page 2 of 2

See page 1 for sketch

Eagle
Township

Section 32
T18N, R2E

▲
Section 05
T17N, R2E

SECTION CORNER RECORD

SE 600-750


BOONE COUNTY SURVEYOR'S OFFICE

State Plane grid coordinates NAD83 (NSRS 2007):
 North: 1714830.48 East: 3164779.54 (U.S. survey feet)

Type of monument: Harrison, 4" disk 'Section Corner'
 Depth: six inches below adjoining ground.

Indiana tie card references:
 IN02_T17NR2E05_04
 IN02_T18NR2E32_76

CORNER WITNESS DETAIL

SCALE 1" = 60' 

- A - Rebar with aluminum cap, intersection of Beekman Place and East Stonegate Drive, 395.00'
- B - Rebar with aluminum cap, intersection of Beekman Place and Beekman Terrace, 177.02'

TIES TO STRUCTURE

- 6683 BEEKMAN PL, TOWNHOME C
- C - Northwest corner, brick chimney, 11.44'
- D - Northeast corner, brick chimney, 8.20'
- E - Westerly corner, bay window, foundation, 16.10'
- F - Northwesterly corner, bay window, foundation, 17.24'

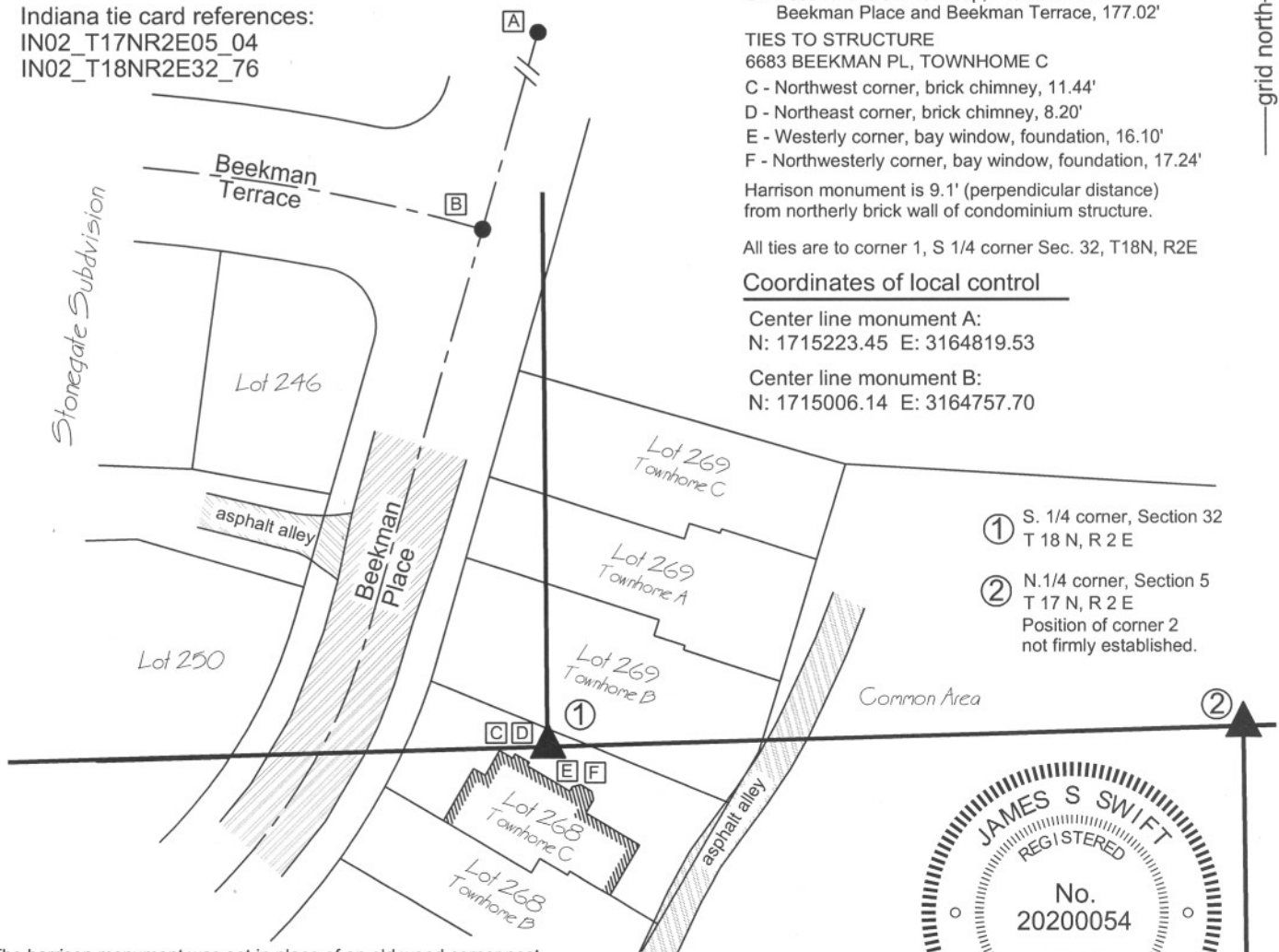
Harrison monument is 9.1' (perpendicular distance) from northerly brick wall of condominium structure.

All ties are to corner 1, S 1/4 corner Sec. 32, T18N, R2E

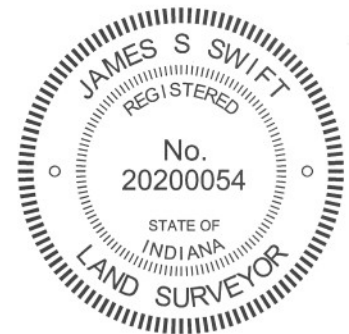
Coordinates of local control

Center line monument A:
 N: 1715223.45 E: 3164819.53

Center line monument B:
 N: 1715006.14 E: 3164757.70



- ① S. 1/4 corner, Section 32 T 18 N, R 2 E
- ② N. 1/4 corner, Section 5 T 17 N, R 2 E
Position of corner 2 not firmly established.



The harrison monument was set in place of an old wood corner post. This corner falls within Stonegate Section VIII but is not shown on the plat. The old corner post was still present in the summer of 2007, at the intersection of the old tree lines marking historical evidence of occupation along the section lines to the north, east and west. A 3/4 inch diameter rebar was found at the northeast edge of the post and two stones were visible at the north and northwest edges of the post, respectively. By the summer of 2008 the post had been cut off at ground level and the adjoining lots appeared to be under preparation for construction of the proposed townhomes. The base of the post was removed on September 24, 2008, during which process numerous rocks were found around the post, all of which were accepted as being brace rocks rather than section corner stones. The harrison monument was set in the position of the center of the base of the post.

Neither a monument nor physical evidence were found in the immediate vicinity of the closing corner. Several monuments including a rebar with Dodge cap and an iron pipe existed approximately 236.5' feet east of standard corner prior to disruptions associated with construction of Stonegate subdivision, as shown on an unrecorded survey by Weihe Engineers, Job. No. 9900920, dated 4/24/2002, which represents a preliminary survey to the Stonegate development. This closing corner is not an original federal corner and was not firmly established as of the date of certification of this tie card.


 Kenneth E. Hedge, County Surveyor

Eagle Township


 James S. Swift, IN LS 20200054

March 11, 2009
 Updated to show structure September 22, 2010

Section 32
 T18N, R2E

Section 05
 T17N, R2E

SECTION CORNER RECORD

SE 600-800

BOONE COUNTY SURVEYOR'S OFFICE

State Plane grid coordinates NAD83 (NSRS 2007):

Corner 1: North: 1714913.62 East: 3167460.82 (U.S. survey feet)
 Corner 2: North: 1714919.27 East: 3167654.12 (U.S. survey feet)

Corner 1:

Type of monument: Calculated position, no monument set.

Corner 2:

Type of monument: Harrison, 4" disk 'Section Corner'

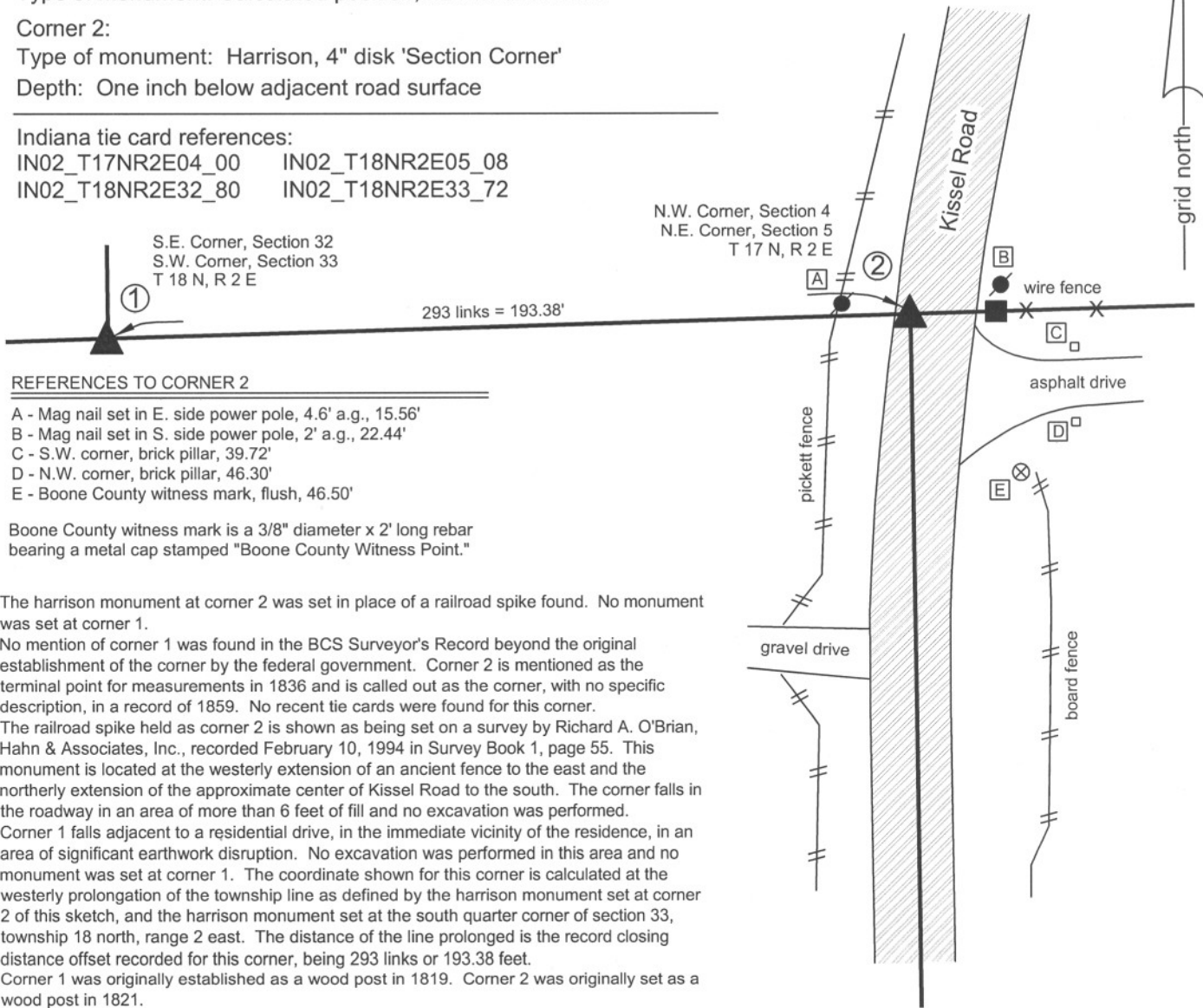
Depth: One inch below adjacent road surface

Indiana tie card references:

IN02_T17NR2E04_00 IN02_T18NR2E05_08
 IN02_T18NR2E32_80 IN02_T18NR2E33_72

CORNER WITNESS DETAIL

SCALE 1" = 40'



REFERENCES TO CORNER 2

- A - Mag nail set in E. side power pole, 4.6' a.g., 15.56'
- B - Mag nail set in S. side power pole, 2' a.g., 22.44'
- C - S.W. corner, brick pillar, 39.72'
- D - N.W. corner, brick pillar, 46.30'
- E - Boone County witness mark, flush, 46.50'

Boone County witness mark is a 3/8" diameter x 2' long rebar bearing a metal cap stamped "Boone County Witness Point."

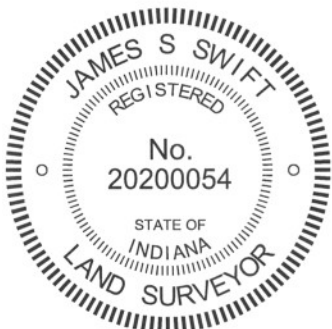
The harrison monument at corner 2 was set in place of a railroad spike found. No monument was set at corner 1.

No mention of corner 1 was found in the BCS Surveyor's Record beyond the original establishment of the corner by the federal government. Corner 2 is mentioned as the terminal point for measurements in 1836 and is called out as the corner, with no specific description, in a record of 1859. No recent tie cards were found for this corner.

The railroad spike held as corner 2 is shown as being set on a survey by Richard A. O'Brian, Hahn & Associates, Inc., recorded February 10, 1994 in Survey Book 1, page 55. This monument is located at the westerly extension of an ancient fence to the east and the northerly extension of the approximate center of Kissel Road to the south. The corner falls in the roadway in an area of more than 6 feet of fill and no excavation was performed.

Corner 1 falls adjacent to a residential drive, in the immediate vicinity of the residence, in an area of significant earthwork disruption. No excavation was performed in this area and no monument was set at corner 1. The coordinate shown for this corner is calculated at the westerly prolongation of the township line as defined by the harrison monument set at corner 2 of this sketch, and the harrison monument set at the south quarter corner of section 33, township 18 north, range 2 east. The distance of the line prolonged is the record closing distance offset recorded for this corner, being 293 links or 193.38 feet.

Corner 1 was originally established as a wood post in 1819. Corner 2 was originally set as a wood post in 1821.



Kenneth E. Hedge
 Kenneth E. Hedge, County Surveyor

James S. Swift
 James S. Swift, IN LS 20200054
 March 1, 2012

Eagle Township

Section 32 T18N, R2E	Section 33 T18N, R2E
Section 5 T17N, R2E	Section 4 T17N, R2E

SECTION CORNER RECORD

SE 650-700

BOONE COUNTY SURVEYOR'S OFFICE

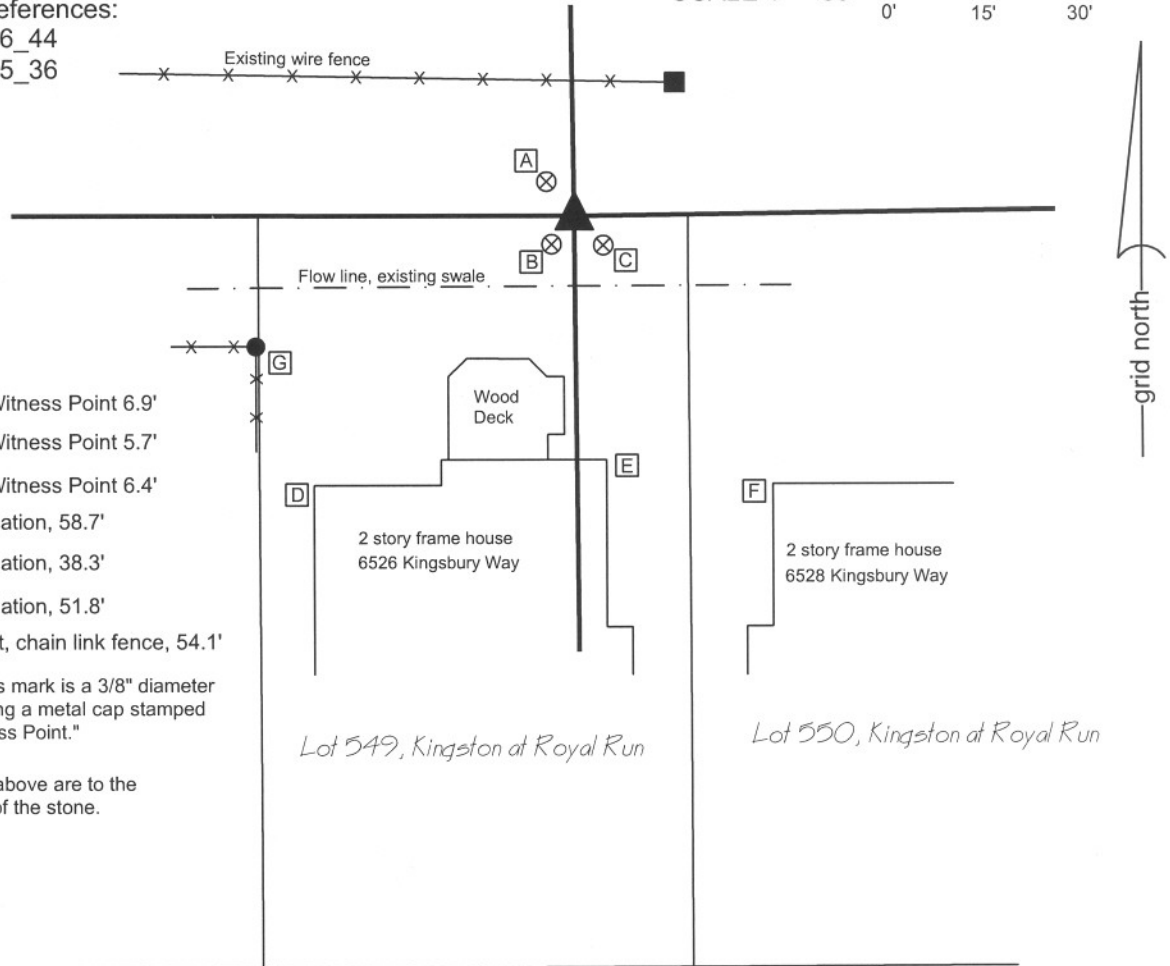
State Plane grid coordinates NAD83 (NSRS 2007):
North: 1711870.68 East: 3162403.50 (U.S. survey feet)

Type of monument: Stone with "+"
Depth: 4" below surface

Indiana tie card references:
IN02_T17NR2E06_44
IN02_T17NR2E05_36

CORNER WITNESS DETAIL

SCALE 1" = 30'
0' 15' 30'



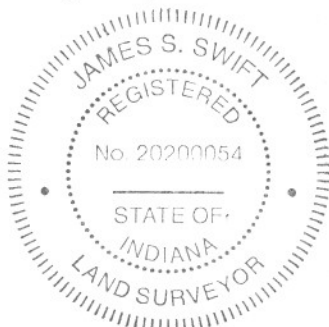
- [A] Boone County Witness Point 6.9'
- [B] Boone County Witness Point 5.7'
- [C] Boone County Witness Point 6.4'
- [D] Corner of Foundation, 58.7'
- [E] Corner of Foundation, 38.3'
- [F] Corner of Foundation, 51.8'
- [G] N.E. Corner post, chain link fence, 54.1'

Boone County witness mark is a 3/8" diameter by 2' long rebar bearing a metal cap stamped "Boone County Witness Point."

Tie distances shown above are to the "+" etched in the top of the stone.

KINGSBURY WAY

This corner is marked by a stone measuring approximately 10 inches by 11 inches at the top with a clearly marked "+" near the south edge of the top of the stone. The stone is 4 inches below the grass surface, near the north side of an existing swale. This stone is shown on a tie card dated September 3, 1976 and appears to be undisturbed. A bent and disturbed 5/8" rebar was found approximately 1.2 feet south and 0.1 east of the stone and was removed. The survey upon which the plats of the Royal Run subdivisions are based (Woolpert, Job No.65-21825-03, 10/22/1997) indicates that the stone is 1.2 feet north and 0.2 feet east of the corner and that a rebar was found 0.24 west of the corner. No explanation is offered as to why the stone was not held as the corner. The plat of Kingston at Royal Run shows a rebar set at the corner. Reconstructing the plat from mag nails in Kingsbury Way, which represent centerline control in this subdivision, the corner shown on the plat is 0.7' south and 0.1' east of the stone and 0.5' north of the disturbed (removed) rebar. This corner was originally established in July, 1821.



Kenneth E. Hedge
Kenneth E. Hedge, County Surveyor

J. S. Swift
James S. Swift, IN LS 20200054
December 21, 2007

Eagle Township

Section 6 T17N, R2E	Section 5 T17N, R2E
------------------------	------------------------

PHOTOGRAPHIC DOCUMENTATION

Date of photography: 11/01/2007

Photo shot from west, showing stone and bent 5/8" rebar.



Close-up of stone from above photo. Etched "+" is near south edge of top of stone.



SECTION CORNER RECORD

SE 650-750

BOONE COUNTY SURVEYOR'S OFFICE

State Plane grid coordinates NAD83 (2011):

North: 1711902.33 East: 3165047.50 (U.S. survey feet)

Type of monument: Stone with drill hole in high point

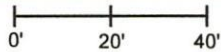
Depth: 8 inches above surrounding ground

Indiana tie card references:

IN02_T17NR2E15_40

CORNER WITNESS DETAIL

SCALE 1" = 40'



7484 Independence Drive

7489 Independence Drive

- A - Boone County witness mark, flush, 18.7'
- B - West edge 13" diameter hickory, 2' a.g., 23.6'
- C - South edge 16" diameter walnut, 2' a.g., 28.9'
- D - 5/8" diameter rebar, 0.2' a.g., 7.5'
- E - Corner of brick foundation, 7489 Independence Drive, 94.7'
- F - Corner of brick foundation, 7484 Independence Drive, 93.0'



- Wire fence

Lot 23

Lot 22

South lines of lots are 4' +/- north of section line as platted to straight line connecting E & W quarter corners of Section 5 (see notes)

South line, lot 23, per plat

South line lot 22, per plat

S. line, N.W. 1/4

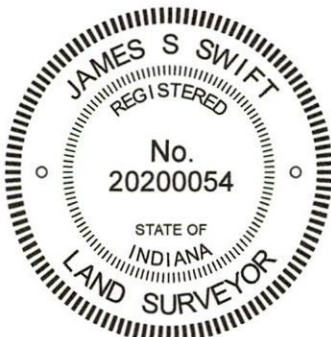
S. line, N.E. 1/4



BLACKSTONE SECTION 2

The stone was found in place at the north edge of a wood corner post. Subsequently, the stone was set in concrete in the same position as originally found. A BCS record dated April 1853 states, with respect to this corner, "Reest. Stone marked 1/4 S. 5." No recent BCS tie cards were found referencing this corner. A survey recorded as Instrument 201300001132, Survey Book 13, pages 87-88, in the Office of the Boone County Recorder shows the corner on an apparent straight line connecting the east and west quarter corners of Section 5, referenced as "Est. per record documents" but does not explain how the corner was established.

In April, 2013, the stone described in the 1853 record was found at the north edge of a wood corner post. The has clearly etched markings of "1/4 S. 5." As found, the stone was partially embedded in the ground, lying in such a manner that the etched markings were face down in the dirt and not readily visible. The stone was stood up and the markings were clearly visible, on the north side of the stone, as stood up. The stone is 17 inches tall by 10 inches N-S by 15 inches E-W in total, as stood up. In April, 2013, the stone was left in place. The high point of the stone was held as the specific position of the corner. In June, 2013, the bottom half of the stone was embedded in concrete, set in a 20 inch tall by 15 inch diameter black plastic storm pipe, set vertically and firmly attached to the ground. The top half of the stone protruding 8 inches above ground. An indentation was drilled into the top, high point of the stone. In this same time frame, the Blackstone Subdivision was being developed, holding the south line of the northeast and northwest quarters of section 5 as established per the aforementioned survey in SB 13, pp. 87-88. The south lines of the southerly lots platted per Blackstone Section 2 (see Plat Book 22, pages 40-45) fall along a line with is north of the south lines of the northeast and northwest quarters of section 5. Specifically, the south line of lot 22 appears to be 4.2 feet north of these lines. The center of section 5 is not shown on the plat but falls near the southwest corner of lot 22, as demonstrated on the sketch.

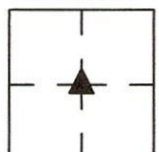



Kenneth E. Hedge, County Surveyor


James S. Swift, IN LS 20200054
March 3, 2020

Section 15
T17N, R2E

Eagle
Township



SECTION CORNER RECORD

SE 650-800

BOONE COUNTY SURVEYOR'S OFFICE

State Plane grid coordinates NAD83 (NSRS 2007):

North: 1711942.52 East: 3167695.46 (U.S. survey feet)

Type of monument: Harrison, 4" disk 'Section Corner'

Depth: Flush with adjacent road surface

Indiana tie card references:

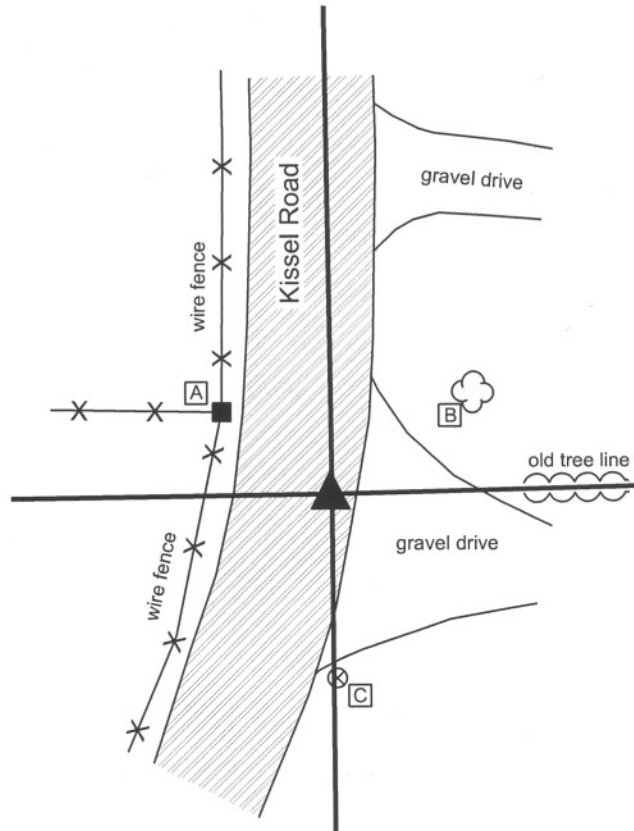
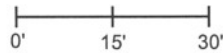
IN02_T17NR2E04_36

IN02_T17NR2E05_44



CORNER WITNESS DETAIL

SCALE 1" = 30'



- A - Nail in bottle cap in N.E. corner wood post, 21.5'
- B - Southwest edge, 20" diameter maple, 24.6'
- C - Boone County witness mark, flush 28.67'

Boone County witness mark is a 3/8" diameter x 2' long rebar bearing a metal cap stamped "Boone County Witness Point."

The harrison monument was set directly over a chisled hole in a stone found. A BCS record of May, 1859 shows this corner and ties to bearing trees. It does not specifically state that a stone is present, which is similar to other BCS records prior to 1860. The stone is located towards the east edge of the roadway at the southerly extension of the center of the road to the north. The stone falls on the the extension of a line offset 1 rod (16.5 feet) east of the old right-of-way fence on the west side of the road, north of the corner. The stone measures 12 inches E-W by 7 inches N-S at the top, 11 inches below the road surface, embedded in the clay at the bottom of the road bed. The harrison monument was truncated at approximately 10 inches and set in concrete over the stone.

A BCS tie card March 6, 1991 shows a position for the corner with ties but does state the monument. Prior to excavation a road nail was found slightly below grade which agreed with the 1991 reference ties. This nail was 1.1 feet North and 1.8 feet west of the stone. Excavation revealed that this nail was directly over a one inch i.d. pipe. Another pipe, being 1/2 inch i.d. was also found 0.2 feet south and 0.1 foot west of the first pipe. Both pipes were removed during excavation.

The original monument at this corner was a wood post set in July, 1821.



Kenneth E. Hedge
Kenneth E. Hedge, County Surveyor

James S. Swift
James S. Swift, IN LS 20200054
March 11, 2009

Eagle Township

Section 5 T17N, R2E	▲	Section 4 T17N, R2E
------------------------	---	------------------------

PHOTOGRAPHIC DOCUMENTATION

Date of photography: October 30, 2007

Photograph of the found stone. The photo is oriented with north towards the top of the page. The top of the stone is 11 inches below the surface of the road and measures 12 inches (E-W) by 7 inches (N-S). A distinct indentation of the top, center of the stone appears to be chiseled by humans. A Harrison monument was broken off and set directly above the chiseled hole.



Close up of the stone, with the tip of a chaining pin placed on the chiseled hole.



SECTION CORNER RECORD

SE 700-700

BOONE COUNTY SURVEYOR'S OFFICE

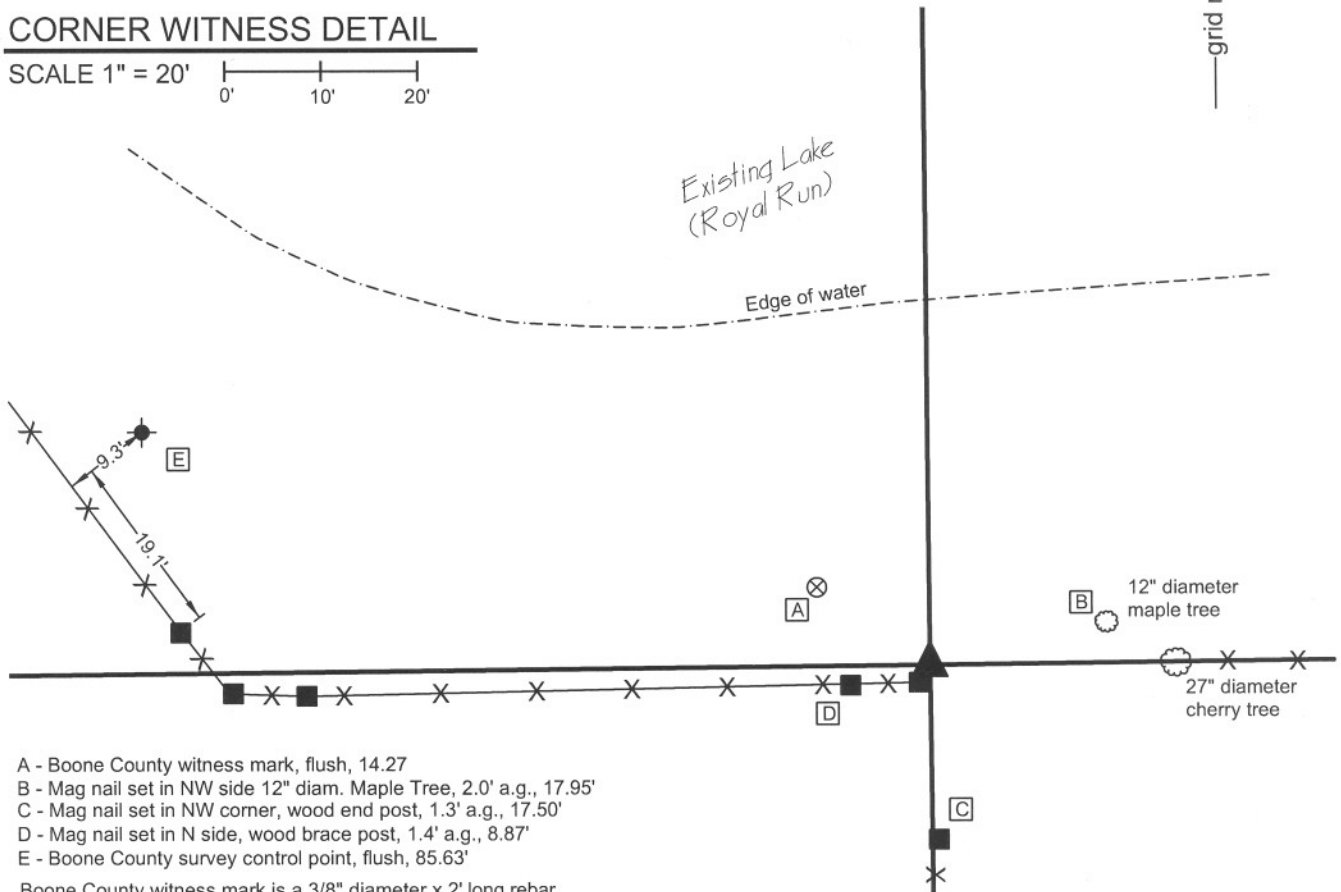
State Plane grid coordinates NAD83 (NSRS 2007):
 North: 1709226.0 East: 3162425.3 (U.S. survey feet)

Type of monument: Stone, (7" x 4" top dimensions)
 Depth: top at 0.2' above grade

Indiana tie card references:
 IN02_T17NR2E05_72 IN02_T17NR2E06_80
 IN02_T17NR2E07_08 IN02_T17NR2E08_00

CORNER WITNESS DETAIL

SCALE 1" = 20'

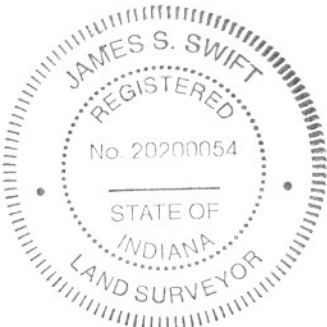


- A - Boone County witness mark, flush, 14.27
- B - Mag nail set in NW side 12" diam. Maple Tree, 2.0' a.g., 17.95'
- C - Mag nail set in NW corner, wood end post, 1.3' a.g., 17.50'
- D - Mag nail set in N side, wood brace post, 1.4' a.g., 8.87'
- E - Boone County survey control point, flush, 85.63'

Boone County witness mark is a 3/8" diameter x 2' long rebar bearing a metal cap stamped "Boone County Witness Point."

Survey control mark is a 3/8" diameter x 2' long rebar bearing a red plastic cap stamped "Control Point."

The stone found measures approximately 7 inches by 4 inches at the top with no particular markings. This stone is referenced on a tie card dated September 4, 1976 and has been held for numerous surveys in this vicinity. A BCS record dated November 24, 1865 references the corner as "a stone that was set" indicating that the stone had been established prior to this date, but does not contain a description of the stone. The point held as the corner is the approximate midpoint of the top of the stone. This corner was originally established in July, 1821.



Kenneth E. Hedge
 Kenneth E. Hedge, County Surveyor

J. S. Swift
 James S. Swift, IN LS 20200054
 December 21, 2007

Section 6 T17N, R2E	Section 5 T17N, R2E
Section 7 T17N, R2E	Section 8 T17N, R2E

Eagle Township

PHOTOGRAPHIC DOCUMENTATION

Date of photography: 10/05/2007

Photograph of existing stone. The top of the stone is 7 inches by 4 inches and protrudes approximately 3 inches above the surface of the ground.



Photograph of stone and two corner posts in immediate proximity. Another corner post, being the terminus of an old north-south fence is 17.5 feet south of stone.



SECTION CORNER RECORD

SE 700-750

BOONE COUNTY SURVEYOR'S OFFICE

State Plane grid coordinates NAD83 (NSRS 2007):

North: 1709257.30 East: 3165071.00 (U.S. survey feet)

Type of monument: Harrison, 4" disk 'Section Corner'

Depth: 2" below grade in gravel drive

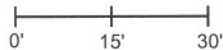
Indiana tie card references:

IN02_T17NR2E05_76

IN02_T17NR2E08_04

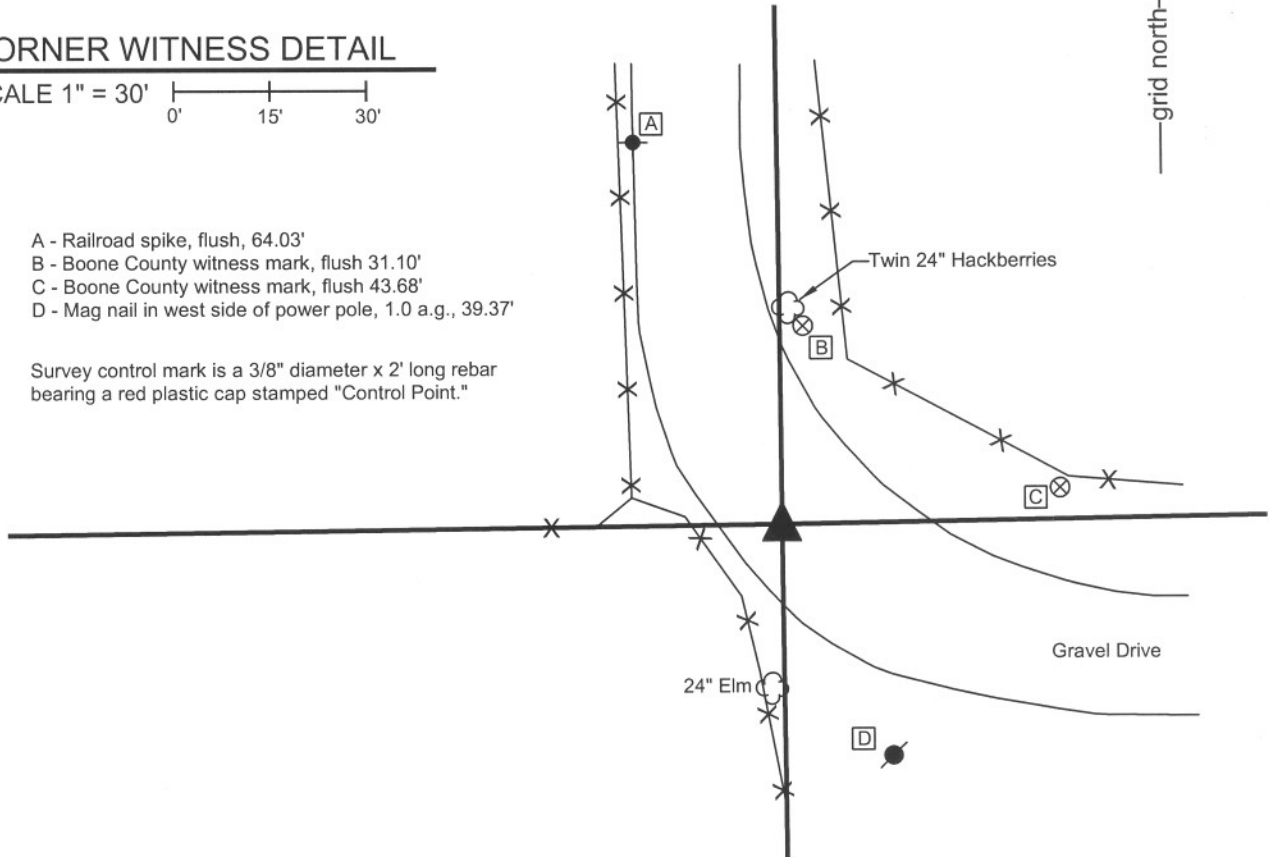
CORNER WITNESS DETAIL

SCALE 1" = 30'



- A - Railroad spike, flush, 64.03'
- B - Boone County witness mark, flush 31.10'
- C - Boone County witness mark, flush 43.68'
- D - Mag nail in west side of power pole, 1.0 a.g., 39.37'

Survey control mark is a 3/8" diameter x 2' long rebar bearing a red plastic cap stamped "Control Point."



The Harrison monument was set in place of a 5/8 inch rebar found and accepted as marking the corner. A previous Boone County Surveyor record dated April 5, 1853 states that a stone marked "1/4 S. 5" was set at this corner. The same stone was found in November, 1864. An undated tie card, likely from 1976, calls for a railroad rail at the corner. Neither the stone nor the rail were found. The corner falls within a gravel driveway and it is apparent that sufficient earthwork has occurred in this area to remove previously existing monuments. This corner was originally established in July, 1819.



Kenneth E. Hedge
Kenneth E. Hedge, County Surveyor

J. S. Swift
James S. Swift, IN LS 20200054
December 21, 2007

Eagle Township

Section 5 T17N, R2E
▲
Section 8 T17N, R2E

SECTION CORNER RECORD

SE 700-800

BOONE COUNTY SURVEYOR'S OFFICE

State Plane grid coordinates NAD83 (NSRS 2007):
North: 1709301.80 East: 3167716.65 (U.S. survey feet)

Type of monument: Harrison, 4" disk 'Section Corner'
Depth: Flush with road surface

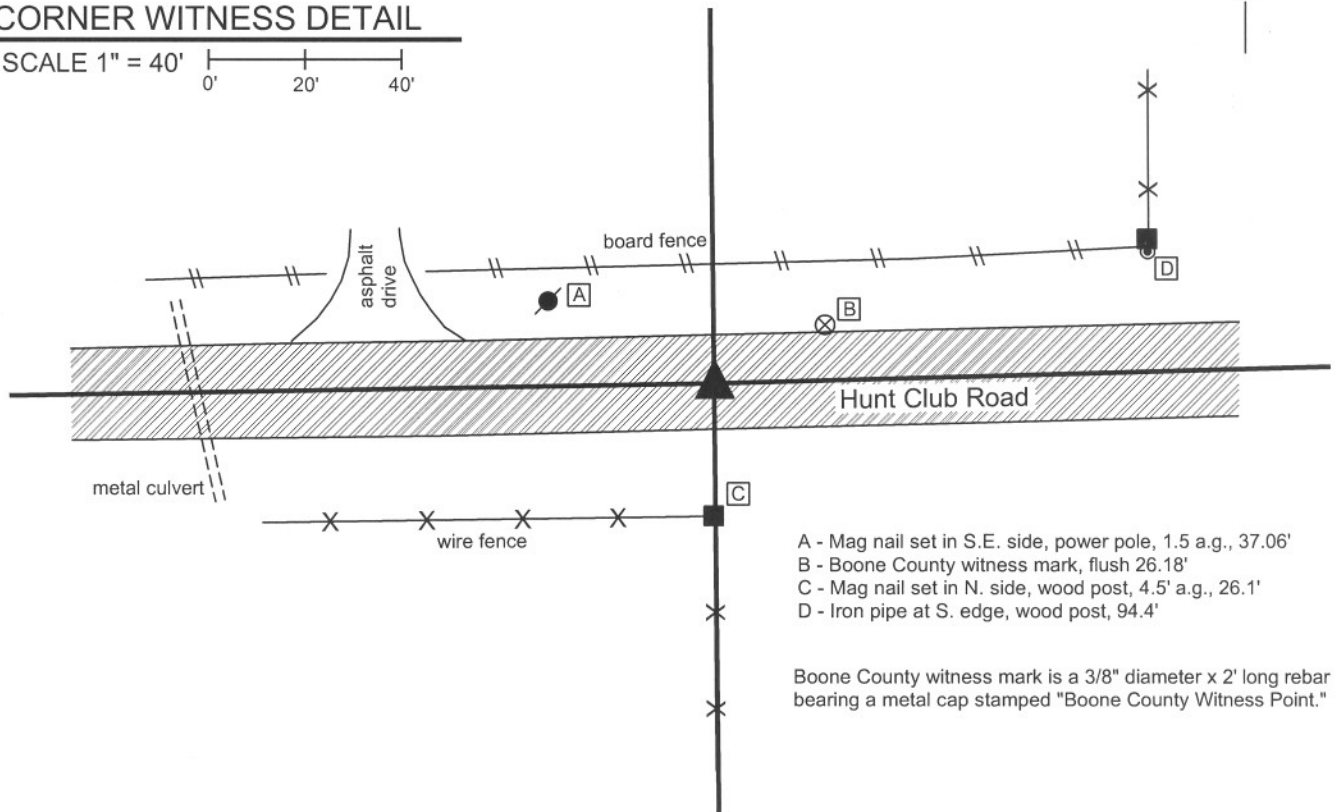
Indiana tie card references:
IN02_T17NR2E04_72 IN02_T17NR2E05_80
IN02_T17NR2E08_08 IN02_T17NR2E09_00



CORNER WITNESS DETAIL

SCALE 1" = 40'

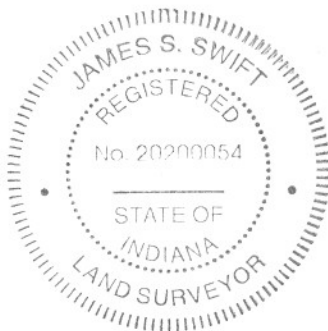
0' 20' 40'



- A - Mag nail set in S.E. side, power pole, 1.5 a.g., 37.06'
- B - Boone County witness mark, flush 26.18'
- C - Mag nail set in N. side, wood post, 4.5' a.g., 26.1'
- D - Iron pipe at S. edge, wood post, 94.4'

Boone County witness mark is a 3/8" diameter x 2' long rebar bearing a metal cap stamped "Boone County Witness Point."

The Harrison monument was set directly over a railroad rail found on end, the top of which is 13 inches below the surface of the road. The railroad rail is shown as being set in April, 1970. A P.K. nail was found above the rail and was removed in the process of setting the Harrison monument. No reference to a stone was found in the county records. This is an area of substantial fill for the roadway and significant excavation was not performed at this site. This corner was originally established in July, 1821.



Kenneth E. Hedge
Kenneth E. Hedge, County Surveyor

J. S. Swift
James S. Swift, IN LS 20200054
December 21, 2007

Eagle Township

Section 5 T17N, R2E	Section 4 T17N, R2E
Section 8 T17N, R2E	Section 9 T17N, R2E