

SECTION CORNER RECORD

SW 600-900

BOONE COUNTY SURVEYOR'S OFFICE

State Plane grid coordinates NAD83 (2011):

Corner 1: North: 1713583.52 East: 3077410.66 (U.S. survey feet)

Corner 2: North: 1713583.47 East: 3077398.78 (U.S. survey feet)

Corner 1: Harrison, 4" disk 'Section Corner', 4" below adjoining gravel

Corner 2: Harrison, 4" disk 'Section Corner', 4" below road surface

Indiana tie card references:

IN02_T18NR2W34_72 IN02_T18NR2W33_80

IN02_T17NR2W04_08 IN02_T17NR2W03_00

① S.E. Corner, Section 33
S.W. Corner, Section 34
T 18 N, R 2 W

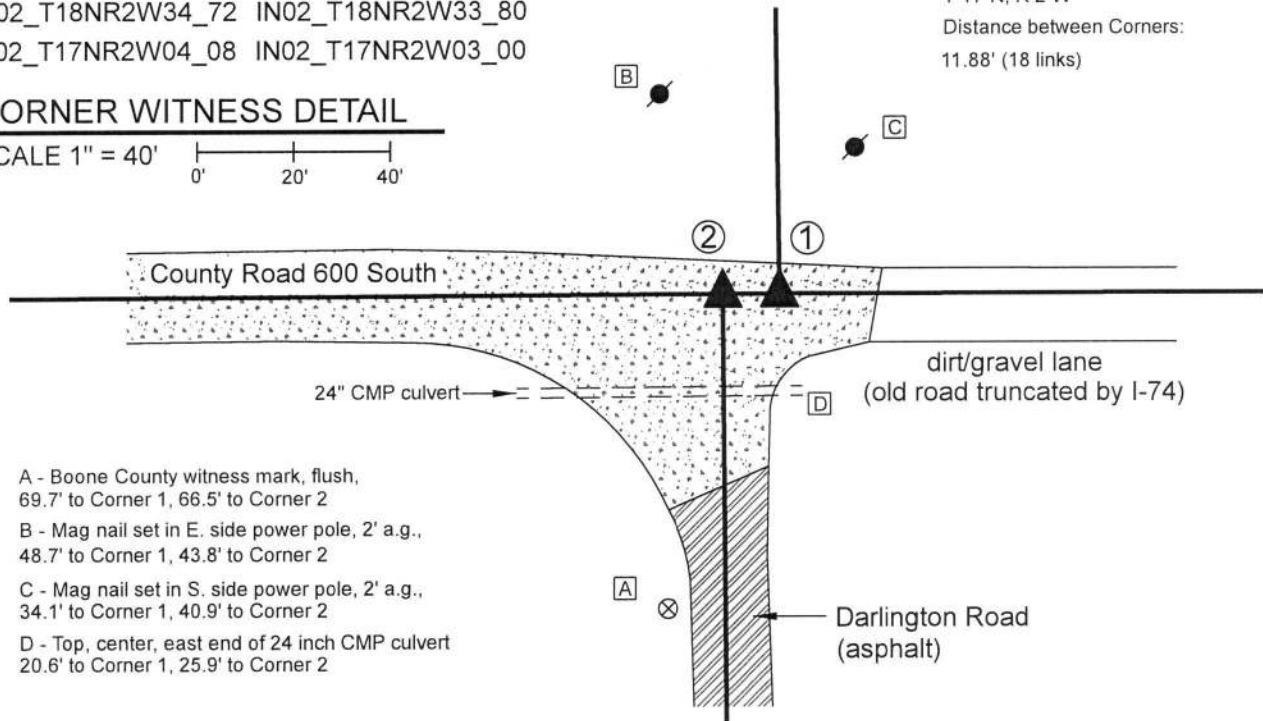
② N.W. Corner, Section 3
N.E. Corner, Section 4
T 17 N, R 2 W

Distance between Corners:
11.88' (18 links)



CORNER WITNESS DETAIL

SCALE 1" = 40'



A - Boone County witness mark, flush,
69.7' to Corner 1, 66.5' to Corner 2

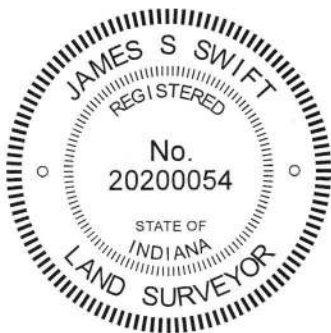
B - Mag nail set in E. side power pole, 2' a.g.,
48.7' to Corner 1, 43.8' to Corner 2

C - Mag nail set in S. side power pole, 2' a.g.,
34.1' to Corner 1, 40.9' to Corner 2

D - Top, center, east end of 24 inch CMP culvert
20.6' to Corner 1, 25.9' to Corner 2

The Harrison monument at Corner 2 was set in place of a rebar found. The Harrison monument at Corner 1 was set at a calculated position. A BCS record of November 11, 1865 states, with respect to Corner 2, "Found both stumps of trees. Drove no stake." No specific descriptions of Corner 1 were found in the BCS Surveyor's Record beyond the original establishment of the corner as a wood post in 1819. No recent BCS tie cards were found referencing these corners.

Initial excavation was performed at this set of corners on October 24, 2019. Prior to excavation, a 1/2 inch diameter rebar was found at the intersection of the prolonged centers of the county roads to the south and west, representing the commonly accepted position of Corner 2. No specific evidence was found marking the accepted position of Corner 1. Excavation centered on the found rebar revealed substantial evidence of a previously wet area. The base material of the road bed is made up of fist sized rocks. Below the road bed, at 2 feet deep, was found an intact section of 'corduroy road,' being large pieces of wood, milled with flat tops, oriented east-west and embedded in the clay layer below the road bed. This discovery is held as substantial evidence of the previously wet area and may explain why the surveyors in 1865 drove no stake. No further excavation was performed at Corner 2 as it is considered highly unlikely that a stone would be found below the corduroy road. Excavation at Corner 1 was limited due the presence of a large multi-pair phone line which was improperly marked prior to excavation and damaged during excavation. The rebar found at Corner 2 was held as marking that corner. The rebar was removed and replaced with a Harrison monument in the same position. Corner 1 was established at the record closing distance of 18 links from Corner 2 on the prolongation of the line connecting Corner 2 with the standard corner 1/2 mile west (see BCS Corner SW 600-950). A Harrison monument was set at this position on November 1, 2019. It is noted that this computed position fits very well with evidence of and relative distances to the standard corners 1/2 mile east and 1 mile east, respectively (see BCS corners SW-600-850 and SW 600-800).



Kenneth E. Hedge
Kenneth E. Hedge, County Surveyor

James S. Swift
James S. Swift, IN LS 20200054
November 19, 2019

Jackson Township

Section 33 T18N, R2W	Section 34 T18N, R2W
Section 4 T17N, R2W	Section 3 T17N, R2W

SECTION CORNER RECORD

SW 600-950

BOONE COUNTY SURVEYOR'S OFFICE

State Plane grid coordinates NAD83 (2011):

Corner 1: North: 1713571.67 East: 3074743.95 (U.S. survey feet)

Corner 2: North: 1713571.69 East: 3074747.90 (U.S. survey feet)

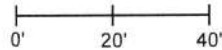
Both Corners: Harrison, 4" disk 'Section Corner', 6" below road

Indiana tie card references:

IN02_T18NR2W33_76 IN02_T17NR2W04_04

CORNER WITNESS DETAIL

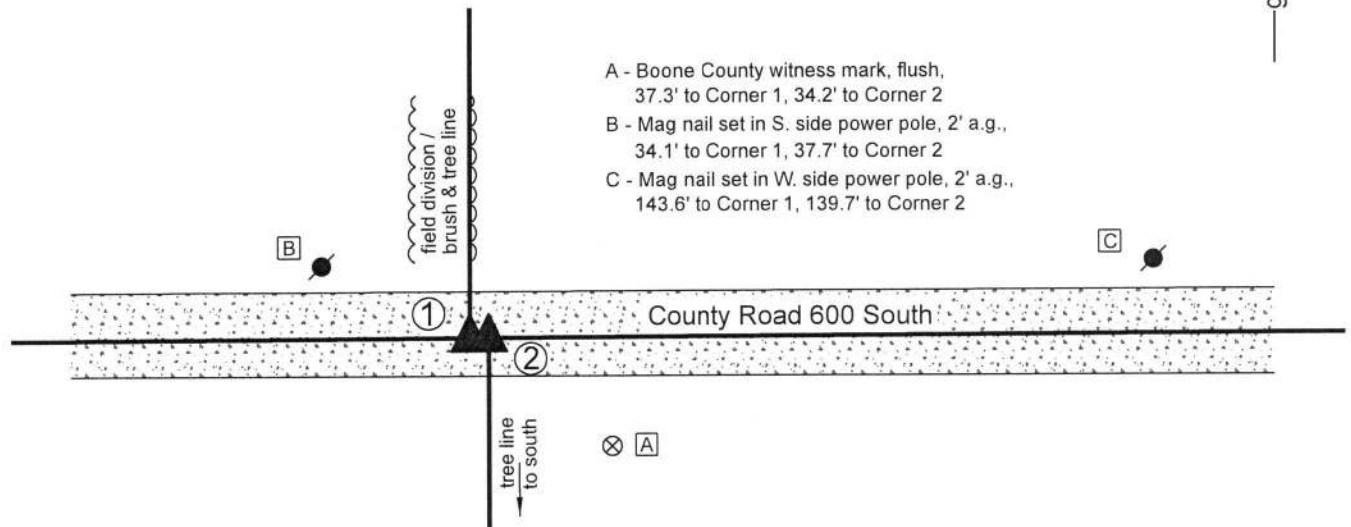
SCALE 1" = 40'



① South Quarter Corner
Section 33, T 18 N, R 2 W

② North Quarter Corner
Section 4, T 17 N, R 2 W

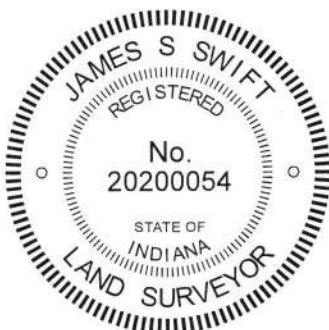
Distance between corners:
3.96' (6 links)



- A - Boone County witness mark, flush,
37.3' to Corner 1, 34.2' to Corner 2
- B - Mag nail set in S. side power pole, 2' a.g.,
34.1' to Corner 1, 37.7' to Corner 2
- C - Mag nail set in W. side power pole, 2' a.g.,
143.6' to Corner 1, 139.7' to Corner 2

The Harrison monument at Corner 2 was set in place of a stone found. The Harrison monument at Corner 1 was set in a calculated position. A BCS record dated November 1, 1865 states, with respect to Corner 2, "Established. Set a rock 12.12.8 + on top and ash stake under it." A subsequent BCS record dated December 3, 1868 states, with respect to Corner 1, "6 links W. of corner for sec. 4. Set a stake." No recent BCS tie cards were found referencing the corners.

Excavation was performed at this set of corners on November 1, 2019. Prior to excavation, two railroad spikes were found 18.3 feet apart. The easterly spike fit generally with vague evidence of occupation to the south. The westerly spike was south of a wood post on the north side of the road. No fencing was found bearing north from this post and it was found to be at the westerly edge of a wide north-south swath of brush and small trees. The two spikes were obviously too far apart to represent the respective corners, as the 1868 record calls for a separation of 6 links, which matches the computed average closing distance from the original federal notes with respect to the northeast and northwest corners of section 4. Excavation at Corner 2 revealed the stone described in the 1865 record found 2.5 feet west and 0.5 foot north of the easterly of the two railroad spikes. The stone was found at six inches below grade. It measured 12 inches north-south by 12 inches east-west by 8 inches tall with a distinct etched "+" mark on the top, center. The stone was accepted as being the monument described in the 1865 record and was held as marking Corner 2. The stone was removed and replaced with a Harrison monument in the same position. Excavation at a point 6 links west of the found stone revealed no further evidence of Corner 1. This corner was established at 6 links (3.96 feet) west of Corner 2 on the westerly prolongation of the line connecting Corner 1 with the standard corner 1/2 mile east (see BCS Corner SW 600-900). A Harrison monument was set at this computed position on November 1, 2019. No excavation was performed around the spike found to the west, as it is obviously too far west to represent evidence of Corner 1, given the stone found at Corner 2 and the correlation of the 6 link distance called in the 1868 record. The spike was left in place 11.9 feet westerly of Corner 1. Corner 1 was originally established as a wood post in 1819. Corner 2 is not an original federal corner.



Kenneth E. Hedge
Kenneth E. Hedge, County Surveyor

James S. Swift
James S. Swift, IN LS 20200054
November 19, 2019

Jackson Township

Section 33
T18N, R2W

Section 4
T17N, R2W

SECTION CORNER RECORD

SW 600-1000

BOONE COUNTY SURVEYOR'S OFFICE

State Plane grid coordinates NAD83 (2011):

Corner 1: North: 1713559.98 East: 3072095.16 (U.S. survey feet)

Corner 2: North: 1713560.06 East: 3072114.96 (U.S. survey feet)

Corner 1: Harrison, 4" disk 'Section Corner', 6" below grade

Corner 2: Harrison, 4" disk 'Section Corner', 6" below grade

Indiana tie card references:

IN02_T18NR2W33_72 IN02_T18NR2W32_80

IN02_T17NR2W05_08 IN02_T17NR2W04_00

① S.E. Corner, Section 32
S.W. Corner, Section 33
T 18 N, R 2 W
Harrison Monument Set

② N.E. Corner, Section 5
N.W. Corner, Section 4
T 17 N, R 2 W
Harrison Monument Set

Distance between monuments: 30 links = 19.80'

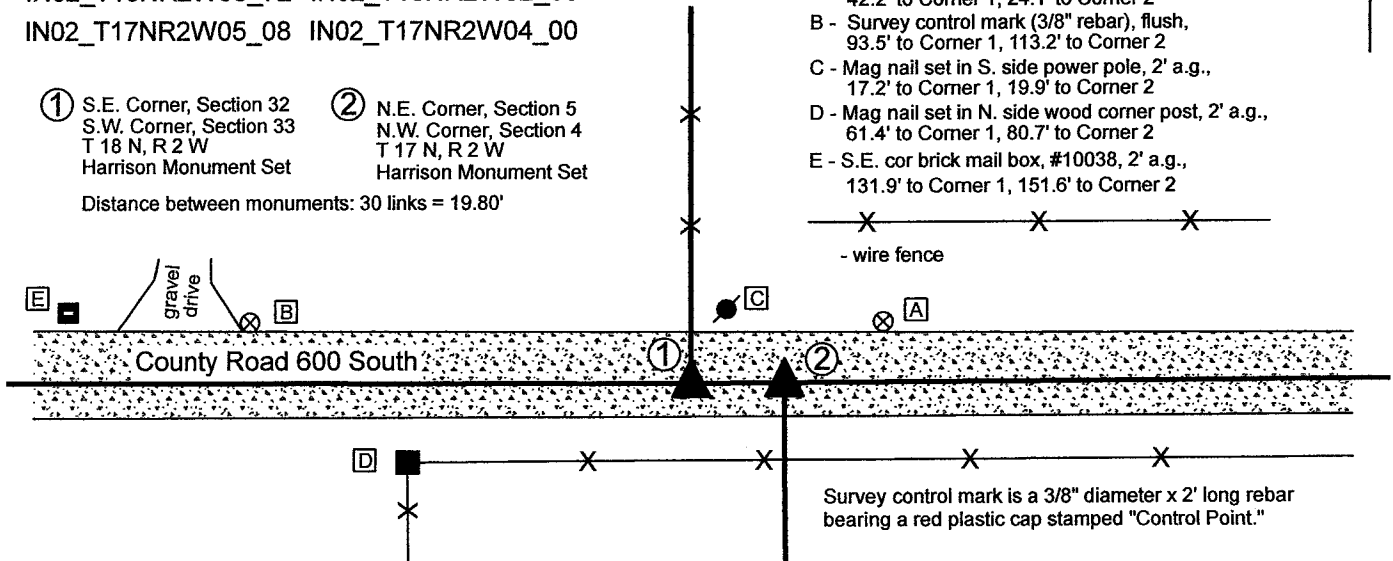
CORNER WITNESS DETAIL

SCALE 1" = 40'

- A - Survey control mark (3/8" rebar), flush, 42.2' to Corner 1, 24.1' to Corner 2
- B - Survey control mark (3/8" rebar), flush, 93.5' to Corner 1, 113.2' to Corner 2
- C - Mag nail set in S. side power pole, 2' a.g., 17.2' to Corner 1, 19.9' to Corner 2
- D - Mag nail set in N. side wood corner post, 2' a.g., 61.4' to Corner 1, 80.7' to Corner 2
- E - S.E. cor brick mail box, #10038, 2' a.g., 131.9' to Corner 1, 151.6' to Corner 2

- wire fence

grid north

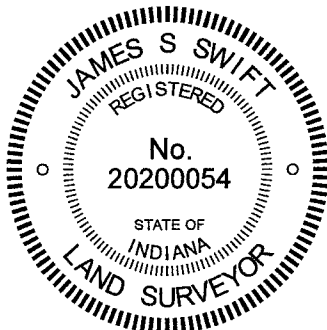


Survey control mark is a 3/8" diameter x 2' long rebar bearing a red plastic cap stamped "Control Point."

The Harrison monument at Corner 1 was set in place of a stone found. The Harrison monument at Corner 2 was set at a calculated position. Corner 1 was originally established as a wood post in 1819. Corner 2 was established in 1820 at a closing distance of 30 links (19.8 feet) east of Corner 1. A BCS record of November 1, 1865 states, with respect to Corner 2, "Found by measuring the lap from cor. 32 & 33, township 18. Set a rock 12.8.6 + mark on S. side. Is very near the edge of a large Oak on S.W." A BCS record of December 13-14, 1894 states, with respect to Corner 1, "Reestablished from lap. Set Rock + 14.10.10. Corner Rock Sects 4 & 5 East 30 [links]." It is noted that the term "lap" refers to the offset between corners on a township or range line. It is also noted that in 1865, some object, perhaps the original wood post, must have been present at Corner 1, from which Corner 2 was established. This object was evidently no longer present in 1895, at which time Corner 1 was established relative to the position of the rock at Corner 2. Both records clearly indicate that the corners were set at 30 links (19.8 feet) apart, which is the same closing offset noted in the 1820 federal field notes. No recent BCS tie cards were found referencing the corner. Surveys by William J. Hudson, recorded as Miscellaneous Record 139, pages 939 - 945 in the Office of the Boone County Recorder, call Corner 2 as a railroad spike set with a statement that this position was established by a previous survey, with no reference information about the previous survey.

These corners were excavated on March 19, 2021. Prior to excavation, a rebar with red plastic cap (marking illegible) was found ostensibly marking Corner 1. No metal monument was found marking Corner 2. Excavation revealed a stone found at Corner 1 at 6 inches deep. The stone measured 14 inches tall by 8 inches N-S by 4 inches E-W. The stone had clearly been broken previously, presumably by road grading equipment, which may account for the variation between the measured size and that which was noted in 1895. The stone was adjacent to the found rebar, in line with the old fence to the north. Excavation of an area 10 feet E-W by 4 feet N-S at Corner 2 revealed no further evidence of that corner. The position held by Hudson appears to have been approximately 7 feet west of a position 30 links East of Corner 1. Excavation at Corner 2 encompassed both the computed Hudson position and the computed position 30 links East of Corner 1. Deeds for land in section 4 and 5 either use the description created by Hudson, which calls for the fence shown on this drawing, west of both corners, or use acreage calls which are inconclusive with respect to the position of Corner 2. The stone at Corner 1 was held as marking that corner. Corner 2 was established at 30 links east, per the federal field notes and two previous BCS records. The fact that no stone was found at Corner 2 may be due to the large Oak tree noted in the 1865 record. That tree is clearly no longer present, and its removal may have also removed the stone. It is also noted that the stone found at Corner 1 had clearly been damaged in the past. Road grading equipment may have also removed the stone at Corner 2.

A Harrison monument was set in place of the found stone at Corner 1 on March 19, 2021. A Harrison monument was set at Corner 2, at the computed position 30 links east of Corner 1, on September 14, 2021.



Kenneth E. Hedge
Kenneth E. Hedge, County Surveyor

James S. Swift
James S. Swift, IN LS 20200054

September 15, 2021

Jackson Township

Section 32 T18N, R2W	Section 33 T18N, R2W
Section 5 T17N, R2W	Section 4 T17N, R2W

SECTION CORNER RECORD

SW 650-900

BOONE COUNTY SURVEYOR'S OFFICE

State Plane grid coordinates NAD83 (2011):

North: 1710810.06 East: 3077419.76 (U.S. survey feet)

Type of monument: Harrison, 4" disk 'Section Corner'

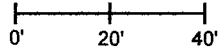
Depth: Flush with adjacent ground

Indiana tie card references:

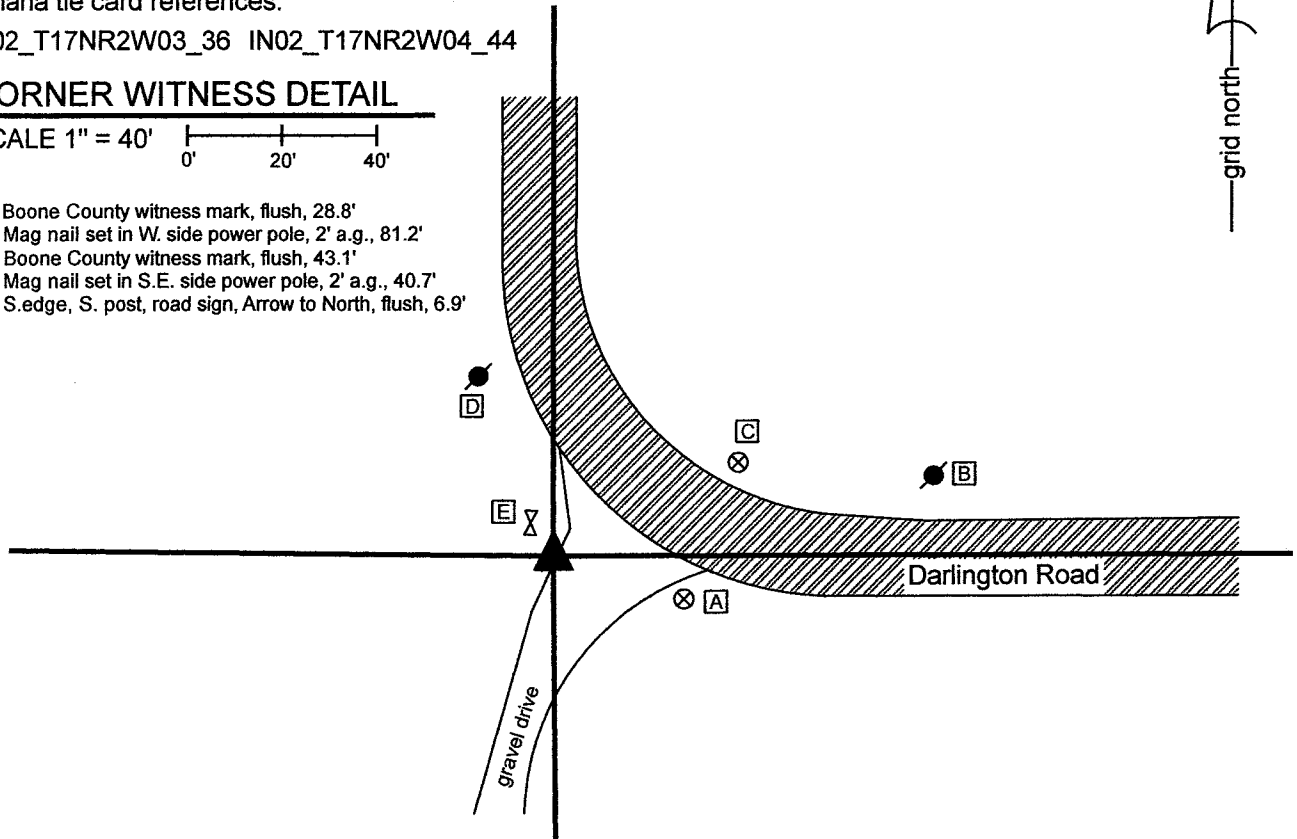
IN02_T17NR2W03_36 IN02_T17NR2W04_44

CORNER WITNESS DETAIL

SCALE 1" = 40'



- A - Boone County witness mark, flush, 28.8'
- B - Mag nail set in W. side power pole, 2' a.g., 81.2'
- C - Boone County witness mark, flush, 43.1'
- D - Mag nail set in S.E. side power pole, 2' a.g., 40.7'
- E - S.edge, S. post, road sign, Arrow to North, flush, 6.9'

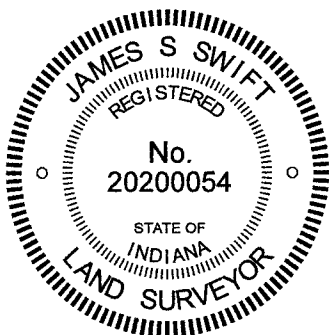


The Harrison monument was set in place of a stone found.

A BCS Record of November 2-3, 1871, states, with respect to this corner, "Reestablished from roots of SW Sugar. Set a rock 17.13.8 marked +."

No recent BCS tie cards were found referencing this corner.

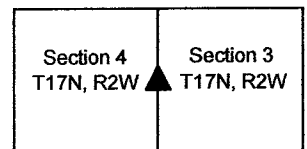
Excavation was performed at this corner of July 14, 2021. Prior to excavation, a rebar with cap of L.D. Deckard which appeared to be intended to mark the corner was found. Excavation revealed the stone described in the 1871 record several feet south of the Deckard rebar. The stone was found at 12 inches below grade. The stone was at the bottom of sandy, gravel material which appeared to be the ancient road bed. Darlington Road bends 90 degrees at this corner. Currently, the paved roadway is fully to the east and north of the corner, but it appears that the old road bed made a sharper bend during an earlier era. The stone fit remarkably well with the physical center of the current road to the east and north. A distinct "+" mark was observed on the north side of the stone. On first sight, during excavation, it appeared that the stone had been previously knocked over toward the north, presuming that the mark was originally set on the top of the stone. However, as the stone was more fully excavated, this observation became less certain. As found, the stone measured 17 inches north-south by 8 inches east-west by 13 inches tall, with the mark on the north side. If the stone had been knocked over, it would have been 17 inches tall by 13 inches north-south. In any case, the main body of the stone appeared to represent the position of the corner as set in 1871. The stone was removed from the ground. A Harrison monument was set in place of the top, center of the main body of the stone as found. The rebar, removed during excavation, had been 1.1 foot west and 3.4 feet north of the point on the stone held as the corner. This corner was originally set as a wood post in 1820.



Kenneth E. Hedge
Kenneth E. Hedge, County Surveyor

James S. Swift
James S. Swift, IN LS 20200054
August 9, 2021

Jackson Township



SECTION CORNER RECORD

BOONE COUNTY SURVEYOR'S OFFICE

SW 700-900

State Plane grid coordinates NAD83 (2011):

North: 1708175.96 East: 3077445.1 (U.S. survey feet)

Type of monument: Harrison, 4" disk 'Section Corner'

Depth: Six inches above adjacent ground

Indiana tie card references:

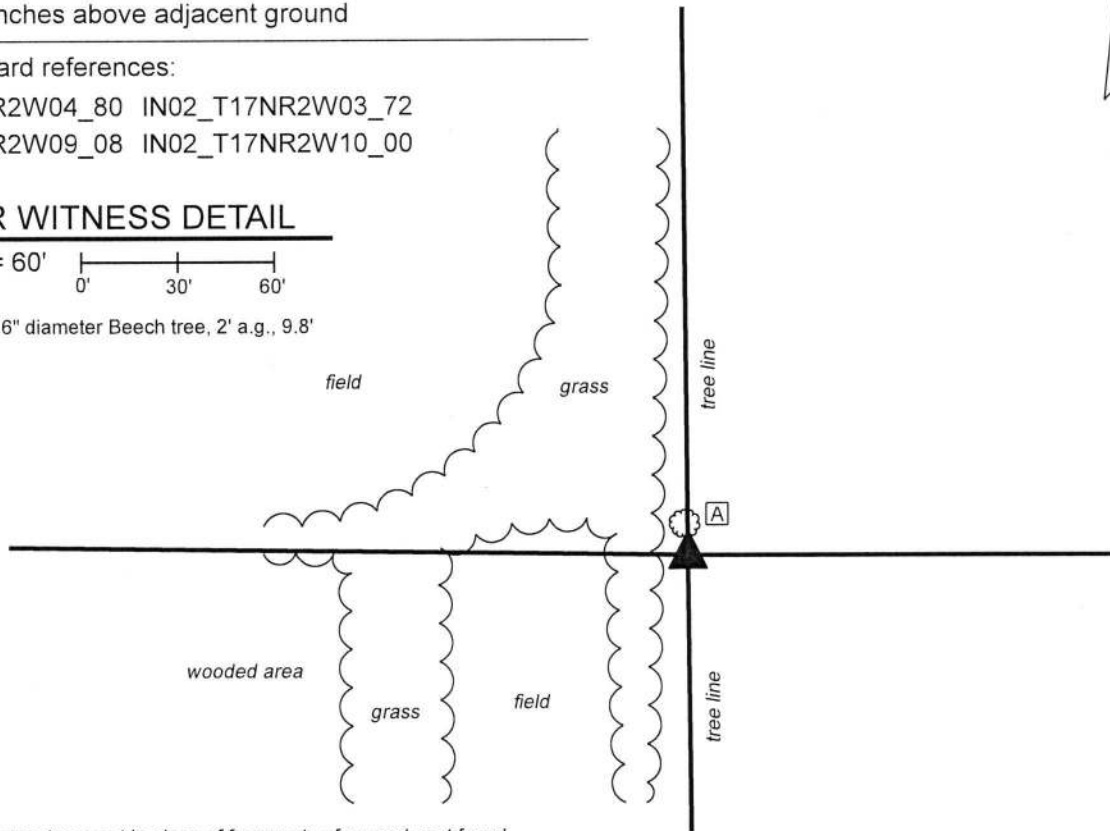
IN02_T17NR2W04_80 IN02_T17NR2W03_72

IN02_T17NR2W09_08 IN02_T17NR2W10_00

CORNER WITNESS DETAIL

SCALE 1" = 60'

A - South edge 6" diameter Beech tree, 2' a.g., 9.8'

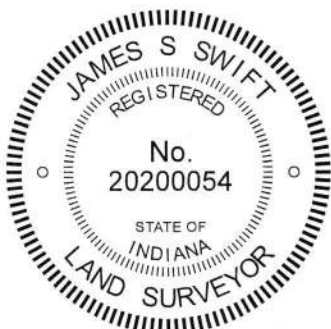


The Harrison monument was set in place of fragments of a wood post found.

A BCS record dated April 1, 1865 states, with respect to this corner, "Found a stake and one tree (down)." A record of December 2, 1868 states "Reest. from roots of elm and a stake. Set rock 20.11.8 mark +." A subsequent record of December 30-31, 1878 does not specifically describe the corner but does provide distances from the subject corner to the northeast and northwest corners of section 9.

This corner was excavated on March 1, 2019 and on September 12, 2019. Prior to excavation, a north-south tree line was observed, but minimal evidence of the east-west lines was visible. A steel t-post in the north-south tree line was observed as the only above-ground evidence of the corner and had been considered previously as an approximate position of the corner for purpose of analysis of the north line of section 10. Prior to searching for more reliable evidence of the subject corner, the distances reported in the 1878 record were used to approximate the position of the corner, as held at that time. This analysis yielded the conclusion that the aforementioned t-post was most likely 16 to 20 feet north of the corner as held in 1878. Excavation in the vicinity of the computed position of the corner revealed numerous rocks surrounding fragments of a cedar post. Pieces of metal bracing hardware was also found in this immediate vicinity. No such evidence was found in the vicinity of the t-post to the north. The numerous rocks and post fragments clearly appeared in the field to represent the old corner and associated rocks. Substantial manual excavation in this vicinity did not reveal the rock described in the 1868 record. Several of the found rocks were of similar dimension but none could be confirmed to be the specific rock referenced in that entry. A large rock, being 22 inches east-west by 20 inches north-south by 15 inches tall (as measured on the north edge) was found embedded in the ground immediately south of the fragments of post and other rocks. The fragments of cedar post were accepted as providing the best available evidence of the corner. A Harrison monument was set in place of this evidence, anchored with concrete to the north side of the aforementioned large rock. The monument was surrounded by several of the other smaller rocks found during excavation.

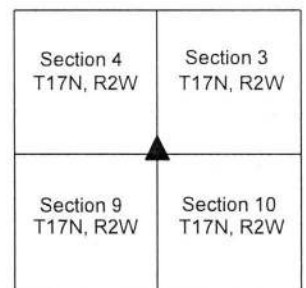
This corner was originally established as a wood post in 1820.



Kenneth E. Hedge
 Kenneth E. Hedge, County Surveyor

James S. Swift
 James S. Swift, IN LS 20200054
 October 15, 2019

Jackson Township



SECTION CORNER RECORD

BOONE COUNTY SURVEYOR'S OFFICE

SW 700-1000

State Plane grid coordinates NAD83 (2011):

North: 1708250.11 East: 3072176.60 (U.S. survey feet)

Type of monument: Harrison, 4" disk 'Section Corner'

Depth: Six inches below adjacent gravel road surface

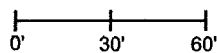
Indiana tie card references:

IN02_T17NR2W05_80 IN02_T17NR2W04_72

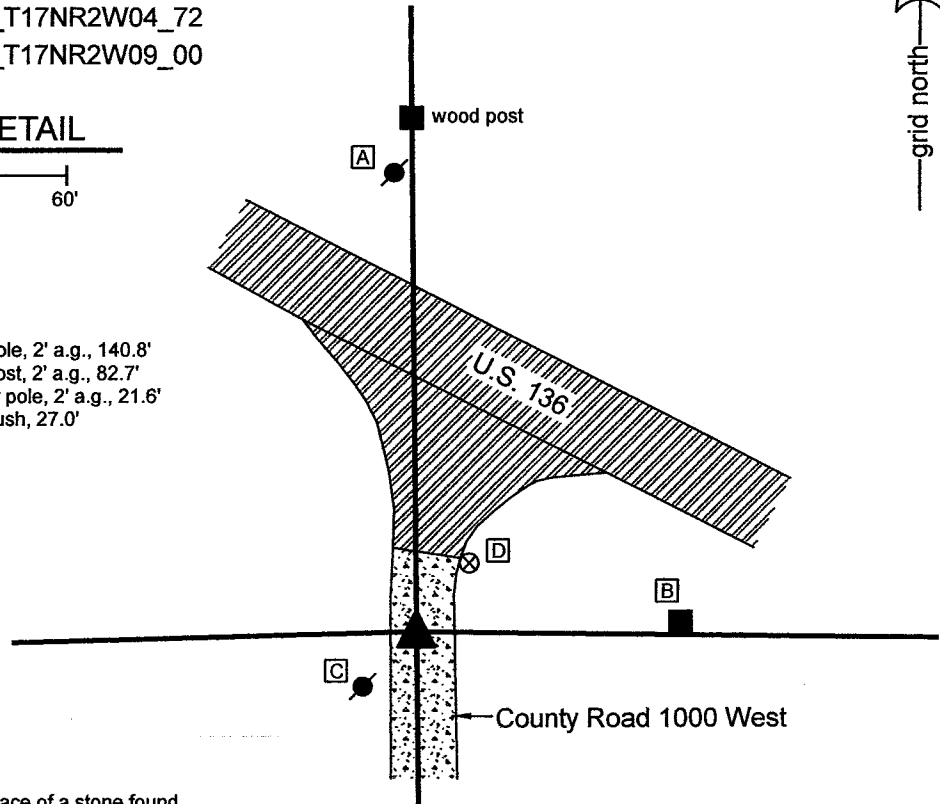
IN02_T17NR2W08_08 IN02_T17NR2W09_00

CORNER WITNESS DETAIL

SCALE 1" = 60'



- A - Mag nail set in S. side power pole, 2' a.g., 140.8'
- B - Mag nail set in W. side wood post, 2' a.g., 82.7'
- C - Mag nail set in N.E. side power pole, 2' a.g., 21.6'
- D - Boone County witness mark, flush, 27.0'

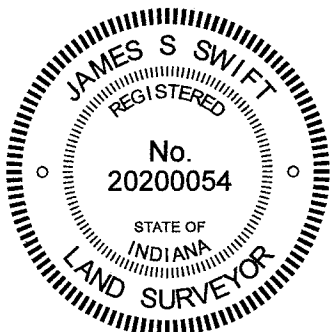


The Harrison monument was set in place of a stone found.

A BCS record of February 12, 1874 states, with respect to this corner, "Reestablished cor sects 4,5,8&9. Set rock 17,12,9 +." No recent BCS tie cards were found referencing this corner.

Excavation was performed at this corner on June 10, 2021. Prior to excavation, a vertical section of railroad rail of unknown origin was found at 3 inches deep in the approximate position of the corner. Excavation revealed the stone described in the 1874 record at 7 inches deep, approximately 4 feet north of the rail. As found, the stone was embedded in the clay layer below the road, protruding 4 inches into the bottom of the road bed. The stone was vertical and evidently undisturbed with a clearly visible "+" mark etched on the top of the stone. The stone was removed from the road bed and found to have been 17 inches tall by 12 inches E-W and 10 inches N-S, which matches well with the dimensions specified in the 1874 record. The position of the stone works remarkably well with the relative position of corners to the south, including evidence 1/4 mile south, as stated in the 1874 record. The stone is also generally in-line with an ancient wood post with brace notches found near the southerly R/W of U.S. 136, slightly east of the corner. The stone was accepted as being the same monument as called in the 1874 record and was held as marking the corner. The stone was removed from the road and replaced with a Harrison monument in the position of the etched "+" mark on the top of the stone. The railroad rail, removed during excavation, had been 4.3 feet south and 0.6 foot west of the mark on the top of the stone.

This corner was originally established as a wood post in 1820.



Kenneth E. Hedge
 Kenneth E. Hedge, County Surveyor

James S. Swift
 James S. Swift, IN LS 20200054
 June 16, 2021

Jackson Township

Section 5 T17N, R2W	Section 4 T17N, R2W
Section 8 T17N, R2W	Section 9 T17N, R2W