

SECTION CORNER RECORD

SW 600-800

BOONE COUNTY SURVEYOR'S OFFICE

State Plane grid coordinates NAD83 (2011):

North: 1713606.38 East: 3082729.46 (U.S. survey feet)

North: 1713605.98 East: 3082716.46 (U.S. survey feet)

Type of monument: INDOT Type B Monument

Depth: Flush with adjacent road surface

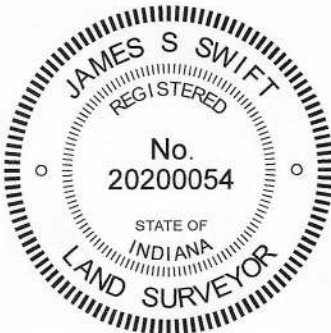
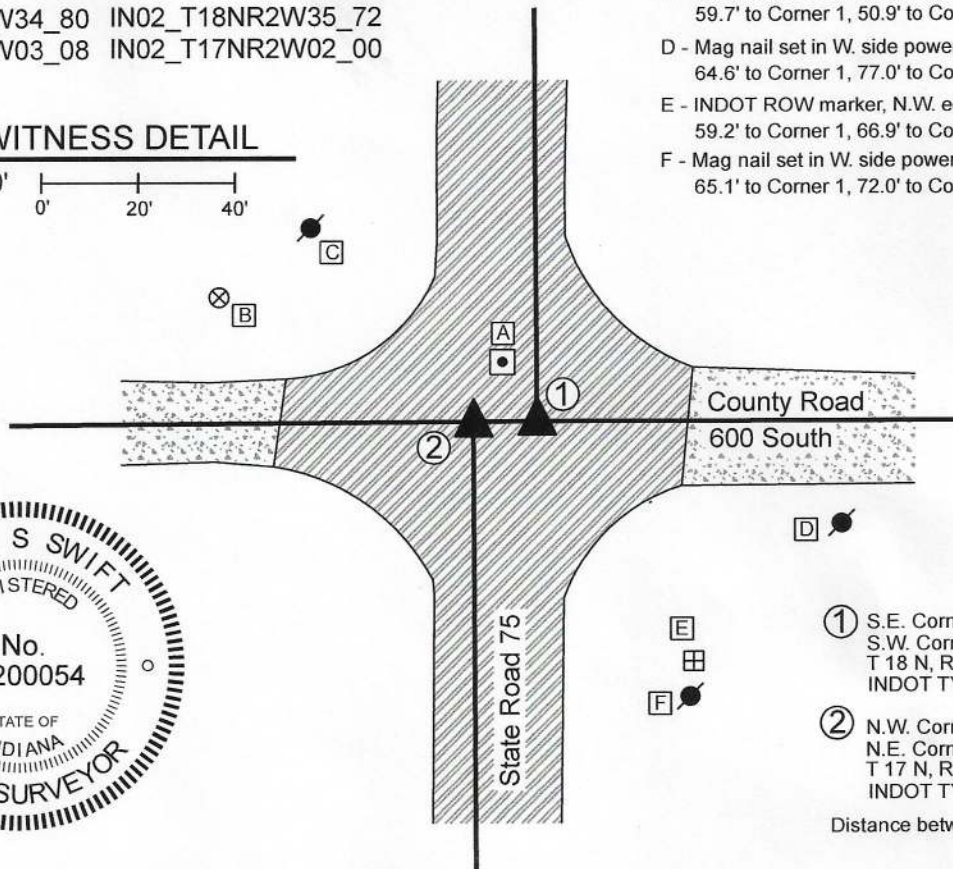
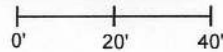
Indiana tie card references:

IN02_T18NR2W34_80 IN02_T18NR2W35_72

IN02_T17NR2W03_08 IN02_T17NR2W02_00

CORNER WITNESS DETAIL

SCALE 1" = 40'



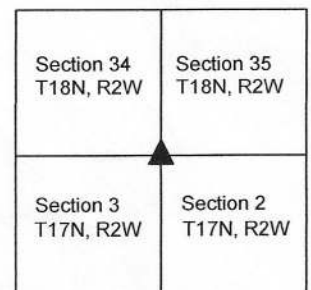
- A - INDOT Type B monument, flush
14.3 to Corner 1, 14.2' to Corner 2
- B - Boone County witness mark, flush,
70.6' to Corner 1, 58.8' to Corner 2
- C - Mag nail set in S.E. side power pole, 2' a.g.
59.7' to Corner 1, 50.9' to Corner 2
- D - Mag nail set in W. side power pole, 2' a.g.
64.6' to Corner 1, 77.0' to Corner 2
- E - INDOT ROW marker, N.W. edge
59.2' to Corner 1, 66.9' to Corner 2
- F - Mag nail set in W. side power pole, 2' a.g.
65.1' to Corner 1, 72.0' to Corner 2

- ① S.E. Corner, Section 34
S.W. Corner, Section 35
T 18 N, R 2 W
INDOT TYPE B MONUMENT
- ② N.W. Corner, Section 2
N.E. Corner, Section 3
T 17 N, R 2 W
INDOT TYPE B MONUMENT

Distance between monuments: 13.0'

The INDOT Type B monuments were found in place and held as marking the respective corners. No specific descriptions of Corner 1 were found in the BCS Surveyor's Record beyond the original establishment of the corner as a wood post in 1819. The original federal notes for Corner 2 call for an offset of 22 links (14.52 feet) west. A BCS record on November 13-14, 1856 states, with respect to corner 2 and referencing a measured line from the south, "Intersected township line 14 links East of corner. Reestablished. Set Rock 12,14. No bearing trees." It is not clear from this record whether the corner was established at 14 links East, or whether it was established at the record offset of 22 links. A BCS tie card dated December, 20003 shows Corner 1 as a '1" bar bent north' and shows Corner 2 as a rebar, with a distance separation of 13.08 feet. The date when the Type B monuments were set is not known, but it is believed that they replaced the monuments shown on the 2003 tie card. The two monuments are 13.0 feet apart, very similar to the 2003 call. Uncertainties of approximately 1.5 feet may be attributed to the relative position of the monuments with respect to the federal offset of 22 links (14.52 feet) versus the measured offset of 13.0 feet. Both monuments fit well with local evidence, being in-line with the east-west roadway and being in-line with the prolongations of the respective portions of State Highway 75 to the north and south. No excavation was performed at these corners as they fall within a state highway. The Type B monuments were held as marking the respective corners. It is noted that Corner 2 falls approximately 0.2 foot south of a straight line connecting Corner 1 with the south quarter corner of section 34 (see BCS Corner SW 600-850). A third, similar monument was also found, as shown on the attached sketch. This monument does not represent a section corner and is shown for informational purposes only.

Jackson Township



Kenneth E. Hedge
Kenneth E. Hedge, County Surveyor

James S. Swift
James S. Swift, IN LS 20200054

July 21, 2020

SECTION CORNER RECORD

BOONE COUNTY SURVEYOR'S OFFICE

SW 600-850

Data for Corner 1 only:
 State Plane grid coordinates NAD83 (2011):
 North: 1713588.41 East: 3080070.04 (U.S. survey feet)

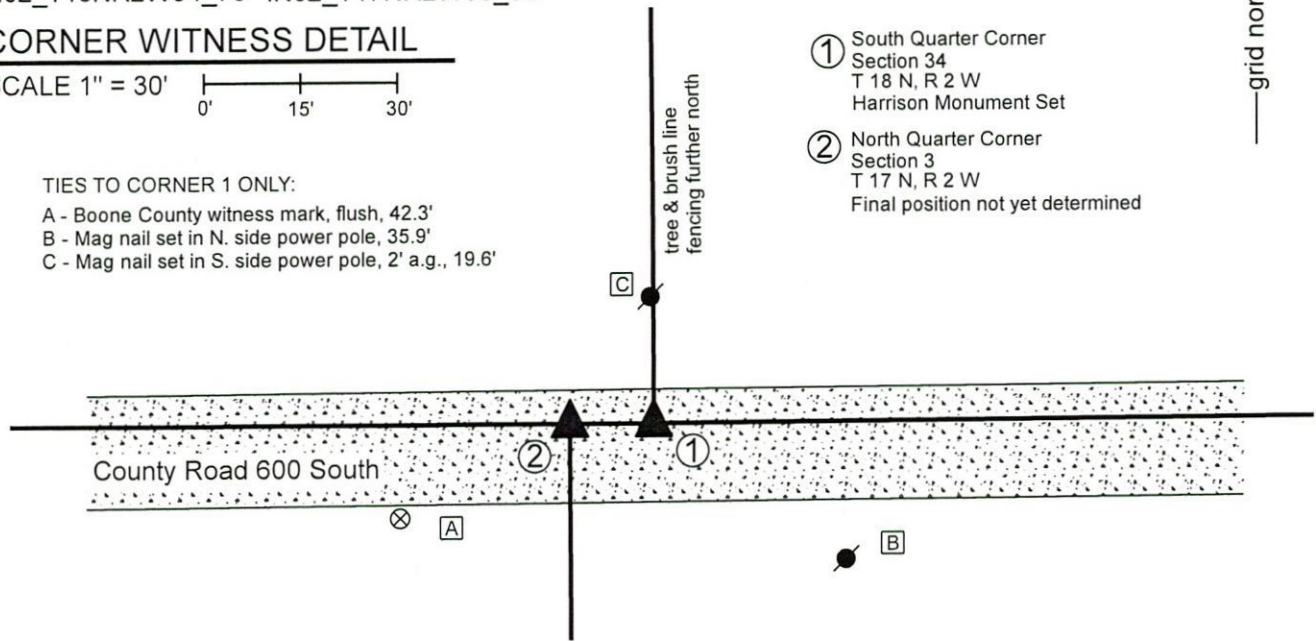
Type of monument: Harrison, 4" disk 'Section Corner'
 Depth: Six inches below adjacent road

Indiana tie card references:
 IN02_T18NR2W34_76 IN02_T17NR2W03_04

CORNER WITNESS DETAIL

SCALE 1" = 30'

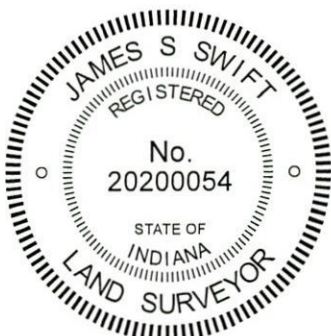
TIES TO CORNER 1 ONLY:
 A - Boone County witness mark, flush, 42.3'
 B - Mag nail set in N. side power pole, 35.9'
 C - Mag nail set in S. side power pole, 2' a.g., 19.6'



- ① South Quarter Corner
 Section 34
 T 18 N, R 2 W
 Harrison Monument Set
- ② North Quarter Corner
 Section 3
 T 17 N, R 2 W
 Final position not yet determined

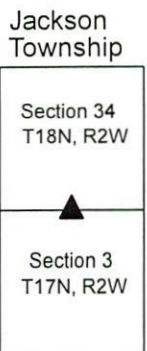


The Harrison monument at Corner 1 was set in the position of a railroad spike previously found marking the corner. No specific descriptions of these corners were found in the BCS Surveyor's Record beyond the original establishment of Corner 1 as a wood post in 1819. Corner 2 is not an original federal corner. No BCS tie cards were found referencing these corners. Excavation was performed at both of these corners on October 23, 2019. Immediately prior to excavation, no survey monument was found. However, in 2010, a railroad spike had been found marking the apparent location of Corner 1, being slightly north of the center of County Road 600 South and in line with the southerly pronging of fencing to the north. Excavation of an area extending 5 feet in all cardinal directions from the position of the spike revealed no further evidence of Corner 1. It is noted that that the railroad spike was found to be approximately 6 feet south of a straight line between the standard corners to the east and west. Excavation was extended to the north edge of the County road. It was observed that the road bed does not extend further north than what is currently graded, indicating that the road has not somehow gradually shifted south over time and that the current road bed appears to also be the historical road bed. An approximate position for Corner 2 was computed at 13.2 feet (20 links) west of Corner 1. Excavation of an area extending approximately 4 feet in all cardinal directions from this position did not reveal further evidence of that corner. The position of the railroad spike found in 2010 was accepted as the best available evidence of the corner and was held as marking the corner. A Harrison monument was set at this position to mark Corner 1 on October 23, 2019. The exact position of Corner 2 will be determined pending confirmation of the position of the two corners at the intersection of County Road 600 South and State Road 75, approximately 1/2 mile east.



Kenneth E. Hedge
 Kenneth E. Hedge, County Surveyor

James S. Swift
 James S. Swift, IN LS 20200054
 January 15, 2020



SECTION CORNER RECORD

SW 600-900

BOONE COUNTY SURVEYOR'S OFFICE

State Plane grid coordinates NAD83 (2011):

Corner 1: North: 1713583.52 East: 3077410.66 (U.S. survey feet)

Corner 2: North: 1713583.47 East: 3077398.78 (U.S. survey feet)

Corner 1: Harrison, 4" disk 'Section Corner', 4" below adjoining gravel

Corner 2: Harrison, 4" disk 'Section Corner', 4" below road surface

Indiana tie card references:

IN02_T18NR2W34_72 IN02_T18NR2W33_80

IN02_T17NR2W04_08 IN02_T17NR2W03_00

① S.E. Corner, Section 33
S.W. Corner, Section 34
T 18 N, R 2 W

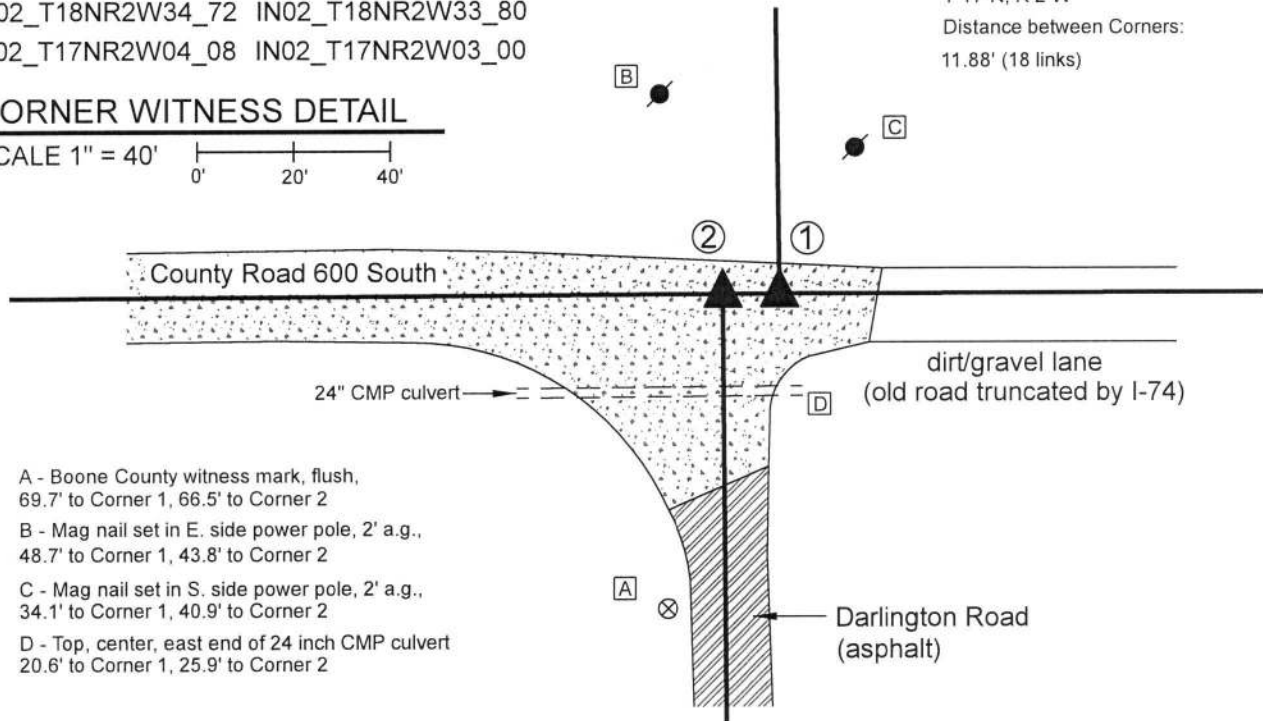
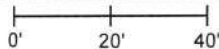
② N.W. Corner, Section 3
N.E. Corner, Section 4
T 17 N, R 2 W

Distance between Corners:
11.88' (18 links)



CORNER WITNESS DETAIL

SCALE 1" = 40'



A - Boone County witness mark, flush,
69.7' to Corner 1, 66.5' to Corner 2

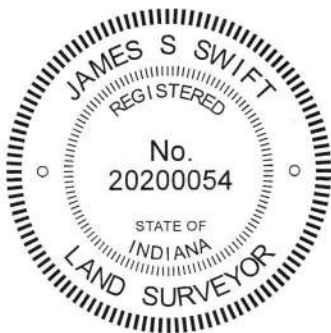
B - Mag nail set in E. side power pole, 2' a.g.,
48.7' to Corner 1, 43.8' to Corner 2

C - Mag nail set in S. side power pole, 2' a.g.,
34.1' to Corner 1, 40.9' to Corner 2

D - Top, center, east end of 24 inch CMP culvert
20.6' to Corner 1, 25.9' to Corner 2

The Harrison monument at Corner 2 was set in place of a rebar found. The Harrison monument at Corner 1 was set at a calculated position. A BCS record of November 11, 1865 states, with respect to Corner 2, "Found both stumps of trees. Drove no stake." No specific descriptions of Corner 1 were found in the BCS Surveyor's Record beyond the original establishment of the corner as a wood post in 1819. No recent BCS tie cards were found referencing these corners.

Initial excavation was performed at this set of corners on October 24, 2019. Prior to excavation, a 1/2 inch diameter rebar was found at the intersection of the prolonged centers of the county roads to the south and west, representing the commonly accepted position of Corner 2. No specific evidence was found marking the accepted position of Corner 1. Excavation centered on the found rebar revealed substantial evidence of a previously wet area. The base material of the road bed is made up of fist sized rocks. Below the road bed, at 2 feet deep, was found an intact section of 'corduroy road,' being large pieces of wood, milled with flat tops, oriented east-west and embedded in the clay layer below the road bed. This discovery is held as substantial evidence of the previously wet area and may explain why the surveyors in 1865 drove no stake. No further excavation was performed at Corner 2 as it is considered highly unlikely that a stone would be found below the corduroy road. Excavation at Corner 1 was limited due the presence of a large multi-pair phone line which was improperly marked prior to excavation and damaged during excavation. The rebar found at Corner 2 was held as marking that corner. The rebar was removed and replaced with a Harrison monument in the same position. Corner 1 was established at the record closing distance of 18 links from Corner 2 on the prolongation of the line connecting Corner 2 with the standard corner 1/2 mile west (see BCS Corner SW 600-950). A Harrison monument was set at this position on November 1, 2019. It is noted that this computed position fits very well with evidence of and relative distances to the standard corners 1/2 mile east and 1 mile east, respectively (see BCS corners SW-600-850 and SW 600-800).



Kenneth E. Hedge
Kenneth E. Hedge, County Surveyor

James S. Swift
James S. Swift, IN LS 20200054
November 19, 2019

Jackson Township

Section 33 T18N, R2W	Section 34 T18N, R2W
Section 4 T17N, R2W	Section 3 T17N, R2W

SECTION CORNER RECORD

SW 650-800

BOONE COUNTY SURVEYOR'S OFFICE

State Plane grid coordinates NAD83 (2011):

North: 1710803.20 East: 3082735.11 (U.S. survey feet)

Type of monument: Plug in monument box (INDOT Type B)

Depth: Flush with adjacent road surface

Indiana tie card references:

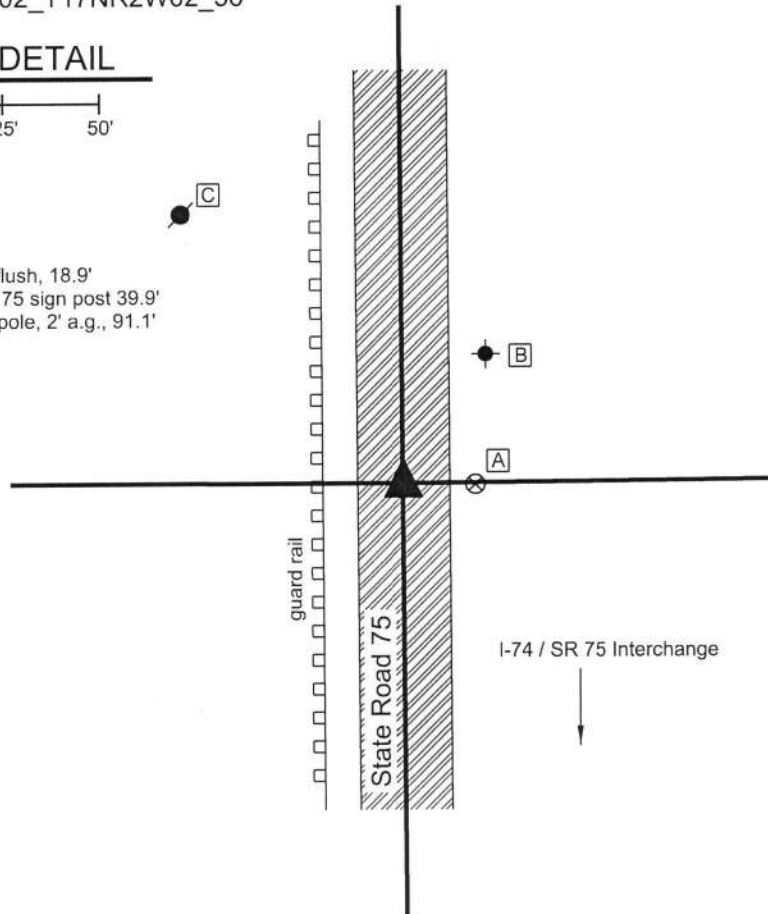
IN02_T17NR2W03_44 IN02_T17NR2W02_36

CORNER WITNESS DETAIL

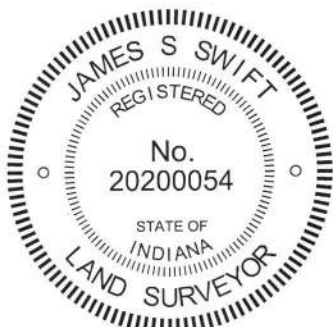
SCALE 1" = 50'



- A - Boone County witness mark, flush, 18.9'
- B - Notch cut in S.W. edge, N. IN 75 sign post 39.9'
- C - Mag nail set in S. side power pole, 2' a.g., 91.1'



The INDOT Type B monument was found in place and held as marking the corner. A BCS tie card shows dated December, 2003 shows the corner as a railroad spike in the center of State Road 75 in line with an old fence to the west. Subsequently, the spike was removed and replaced with an INDOT Type B monument. No excavation was performed at this corner as it falls in a State Road and is also on the approach to the interchange of State Road 75 and Interstate 74.



Kenneth E. Hedge
Kenneth E. Hedge, County Surveyor

James S. Swift
James S. Swift, IN LS 20200054
July 31, 2019

Marion Township

Section 3 T17N, R2W	Section 2 T17N, R2W
------------------------	------------------------

SECTION CORNER RECORD

SW 650-900

BOONE COUNTY SURVEYOR'S OFFICE

State Plane grid coordinates NAD83 (2011):

North: 1710810.06 East: 3077419.76 (U.S. survey feet)

Type of monument: Harrison, 4" disk 'Section Corner'

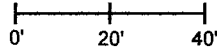
Depth: Flush with adjacent ground

Indiana tie card references:

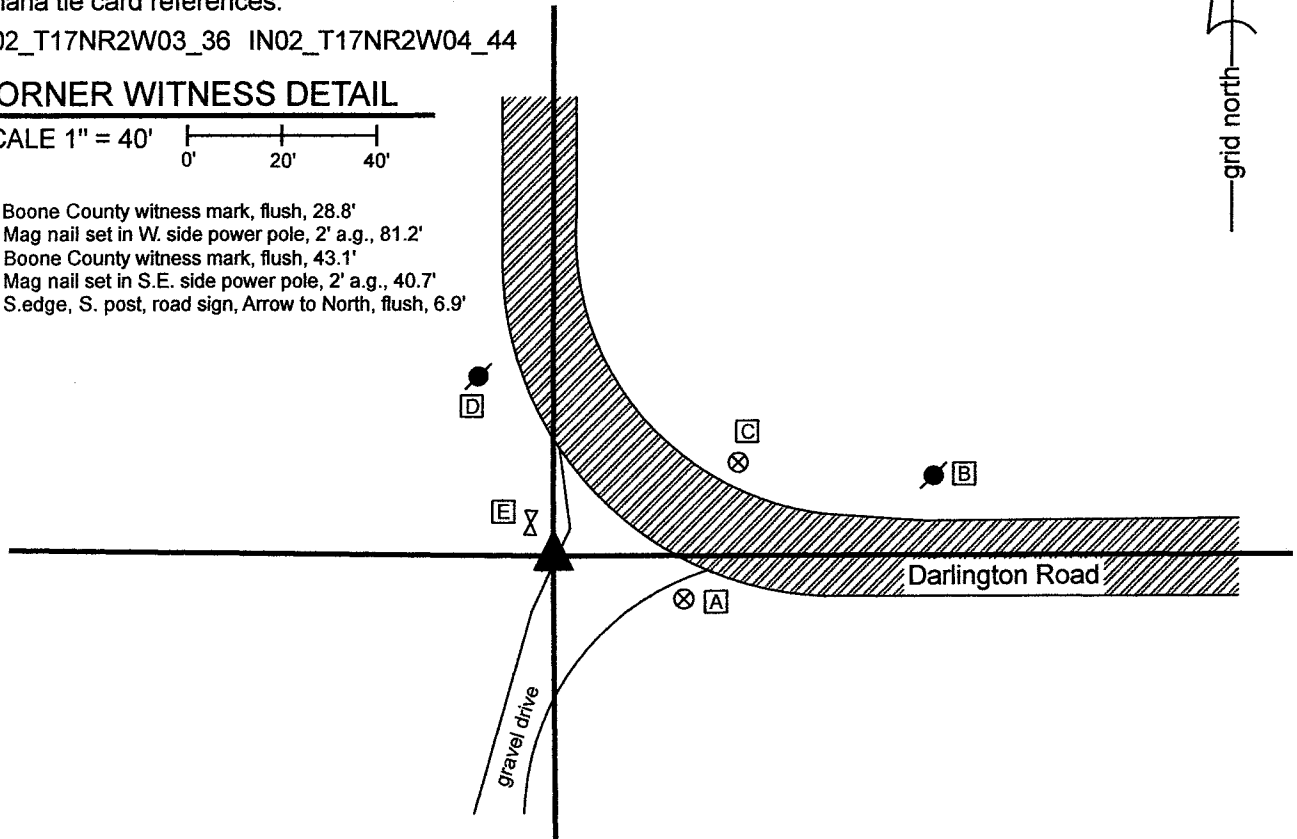
IN02_T17NR2W03_36 IN02_T17NR2W04_44

CORNER WITNESS DETAIL

SCALE 1" = 40'



- A - Boone County witness mark, flush, 28.8'
- B - Mag nail set in W. side power pole, 2' a.g., 81.2'
- C - Boone County witness mark, flush, 43.1'
- D - Mag nail set in S.E. side power pole, 2' a.g., 40.7'
- E - S.edge, S. post, road sign, Arrow to North, flush, 6.9'



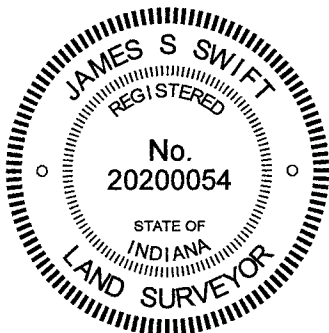
The Harrison monument was set in place of a stone found.

A BCS Record of November 2-3, 1871, states, with respect to this corner, "Reestablished from roots of SW Sugar. Set a rock 17.13.8 marked +."

No recent BCS tie cards were found referencing this corner.

Excavation was performed at this corner of July 14, 2021. Prior to excavation, a rebar with cap of L.D. Deckard which appeared to be intended to mark the corner was found. Excavation revealed the stone described in the 1871 record several feet south of the Deckard rebar. The stone was found at 12 inches below grade. The stone was at the bottom of sandy, gravel material which appeared to be the ancient road bed. Darlington Road bends 90 degrees at this corner. Currently, the paved roadway is fully to the east and north of the corner, but it appears that the old road bed made a sharper bend during an earlier era. The stone fit remarkably well with the physical center of the current road to the east and north. A distinct "+" mark was observed on the north side of the stone. On first sight, during excavation, it appeared that the stone had been previously knocked over toward the north, presuming that the mark was originally set on the top of the stone. However, as the stone was more fully excavated, this observation became less certain. As found, the stone measured 17 inches north-south by 8 inches east-west by 13 inches tall, with the mark on the north side. If the stone had been knocked over, it would have been 17 inches tall by 13 inches north-south. In any case, the main body of the stone appeared to represent the position of the corner as set in 1871. The stone was removed from the ground. A Harrison monument was set in place of the top, center of the main body of the stone as found. The rebar, removed during excavation, had been 1.1 foot west and 3.4 feet north of the point on the stone held as the corner.

This corner was originally set as a wood post in 1820.

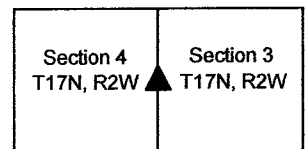


Kenneth E. Hedge
Kenneth E. Hedge, County Surveyor

James S. Swift
James S. Swift, IN LS 20200054

August 9, 2021

Jackson Township



SECTION CORNER RECORD

SW 700-800

BOONE COUNTY SURVEYOR'S OFFICE

State Plane grid coordinates NAD83 (2011):

North: 1708157.94 East: 3082753.550 (U.S. survey feet)

Type of monument: Harrison, 4" disk 'Section Corner'

Depth: One inch below adjacent road surface

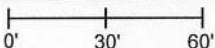
Indiana tie card references:

IN02_T18NR2W36_80 IN02_T18NR1W31_72

IN02_T18NR2W36_08 IN02_T18NR1W31_00

CORNER WITNESS DETAIL

SCALE 1" = 60'

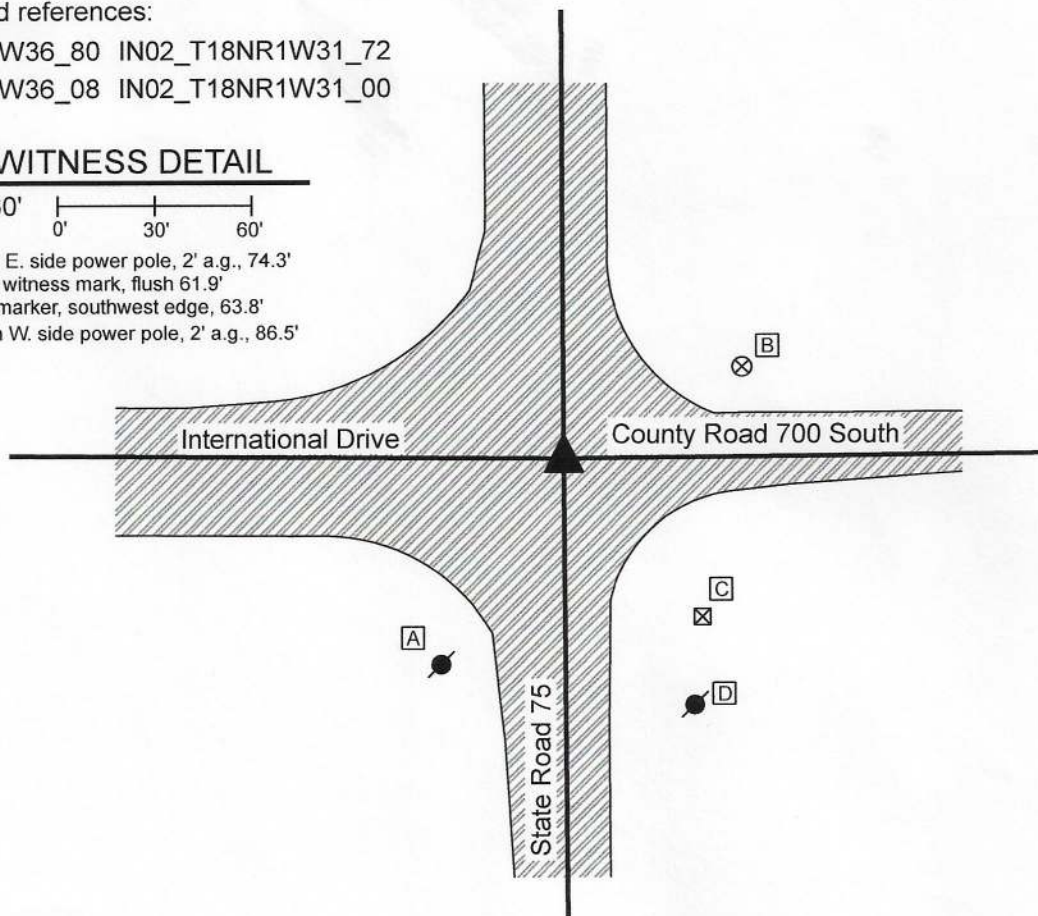


A - Mag nail set in E. side power pole, 2' a.g., 74.3'

B - Boone County witness mark, flush 61.9'

C - INDOT ROW marker, southwest edge, 63.8'

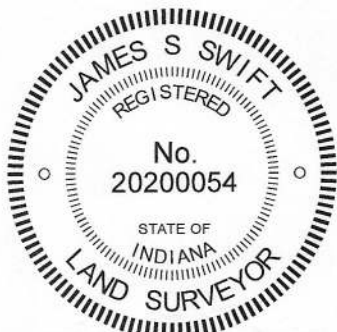
D - Mag nail set in W. side power pole, 2' a.g., 86.5'



The INDOT Type B monument was found in place and held as marking the corner.

A BCS record of February 23-25, 1858 states, with respect to this corner, "Reest. from old wit trees. Rock 11x14." A BCS tie card dated July 1, 1982 shows the corner as a P.K. Nail. A BCS tie card dated December, 2003 shows the corner as a Type "C" Monument. Common distance ties indicate that the monument found in 2003 was in the same, or nearly the same, position as the P.K. nail shown on the 1982 tie card. No excavation was performed at this corner as it falls in a state highway. The Type B monument found is believed to be the same monument as is referenced on the 2003 tie card. This position is known to have been held as marking the corner for many years and fits with local evidence, being at the intersection of the roads. The Type B monument was held as marking the corner.

This corner was originally established as a wood post in 1820.



Kenneth E. Hedge
Kenneth E. Hedge, County Surveyor

James S. Swift
James S. Swift, IN LS 20200054
July 21, 2020

Jackson Township

Section 3 T17N, R2W	Section 2 T17N, R2W
Section 10 T17N, R2W	Section 11 T17N, R2W

SECTION CORNER RECORD

SW 700-850

BOONE COUNTY SURVEYOR'S OFFICE

State Plane grid coordinates NAD83 (2011):

North: 1708173.70 East: 3080099.44 (U.S. survey feet)

Type of monument: Harrison, 4" disk 'Section Corner'

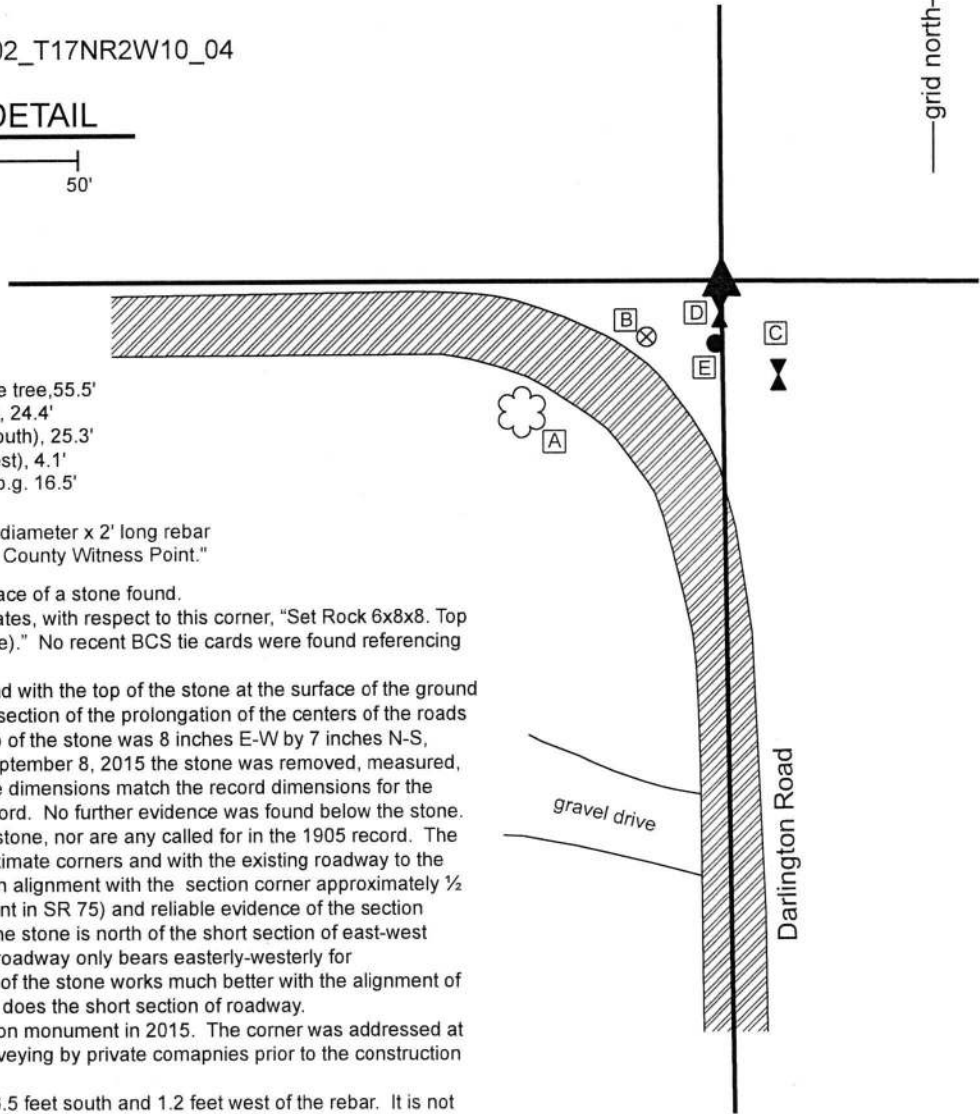
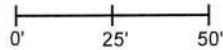
Depth: Flush with adjacent ground

Indiana tie card references:

IN02_T17NR2W03_76 IN02_T17NR2W10_04

CORNER WITNESS DETAIL

SCALE 1" = 50'



- A - N.E. Edge, 27 inch diameter maple tree, 55.5'
- B - Boone County witness mark, flush, 24.4'
- C - North edge, sign post (Arrow to South), 25.3'
- D - East edge, sign post (Arrow to West), 4.1'
- E - 5/8 inch rebar, plastic cap, 1 inch b.g. 16.5'

Boone County witness mark is a 3/8" diameter x 2' long rebar bearing a metal cap stamped "Boone County Witness Point."

The Harrison monument was set in place of a stone found.

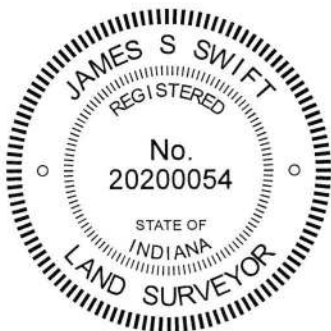
A BCS record of August 5-6, 1905 states, with respect to this corner, "Set Rock 6x8x8. Top Rock 6x8x7 (set over point of old stake)." No recent BCS tie cards were found referencing this corner.

A stone found embedded in the ground with the top of the stone at the surface of the ground was found near the approximate intersection of the prolongation of the centers of the roads to the south and west. The visible top of the stone was 8 inches E-W by 7 inches N-S, oriented in cardinal directions. On September 8, 2015 the stone was removed, measured, and found to be 6 inches thick. These dimensions match the record dimensions for the lower stone described in the 1905 record. No further evidence was found below the stone. No specific marks were found on the stone, nor are any called for in the 1905 record. The position of the stone fits well with proximate corners and with the existing roadway to the south. The stone is also reasonably in alignment with the section corner approximately 1/2 mile east (an INDOT Type B monument in SR 75) and reliable evidence of the section corner approximately 1/2 mile west. The stone is north of the short section of east-west roadway to the west. This section of roadway only bears easterly-westerly for approximately 400 feet. The position of the stone works much better with the alignment of the corners to the east and west than does the short section of roadway.

The stone was replaced with a Harrison monument in 2015. The corner was addressed at that time in support of preliminary surveying by private companies prior to the construction of the Fukaie plant to the east.

A rebar with plastic cap was found 16.5 feet south and 1.2 feet west of the rebar. It is not known whether the rebar was intended to mark the corner or was intended as a witness to the corner. No surveys were found documenting the establishment of the rebar.

This corner was originally established as a wood post in 1820.



Kenneth E. Hedge
 Kenneth E. Hedge, County Surveyor

James S. Swift
 James S. Swift, IN LS 20200054

March 6, 2019

Jackson Township

Section 3
T17N, R2W

▲
 Section 10
 T17N, R2W

SECTION CORNER RECORD

BOONE COUNTY SURVEYOR'S OFFICE

SW 700-900

State Plane grid coordinates NAD83 (2011):

North: 1708175.96 East: 3077445.1 (U.S. survey feet)

Type of monument: Harrison, 4" disk 'Section Corner'

Depth: Six inches above adjacent ground

Indiana tie card references:

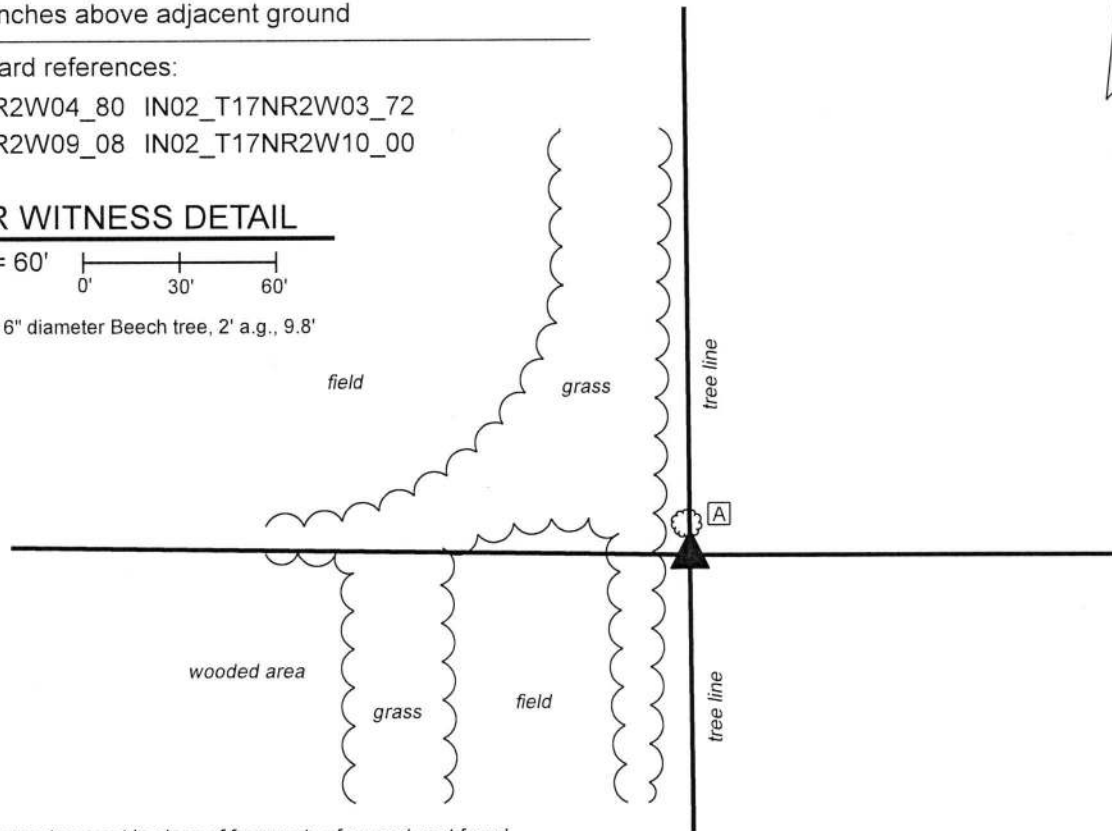
IN02_T17NR2W04_80 IN02_T17NR2W03_72

IN02_T17NR2W09_08 IN02_T17NR2W10_00

CORNER WITNESS DETAIL

SCALE 1" = 60'

A - South edge 6" diameter Beech tree, 2' a.g., 9.8'

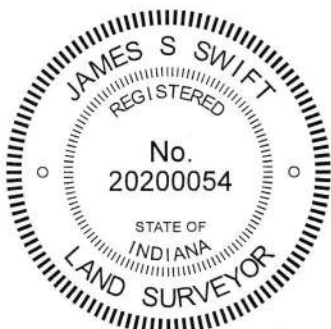


The Harrison monument was set in place of fragments of a wood post found.

A BCS record dated April 1, 1865 states, with respect to this corner, "Found a stake and one tree (down)." A record of December 2, 1868 states "Reest. from roots of elm and a stake. Set rock 20.11.8 mark +." A subsequent record of December 30-31, 1878 does not specifically describe the corner but does provide distances from the subject corner to the northeast and northwest corners of section 9.

This corner was excavated on March 1, 2019 and on September 12, 2019. Prior to excavation, a north-south tree line was observed, but minimal evidence of the east-west lines was visible. A steel t-post in the north-south tree line was observed as the only above-ground evidence of the corner and had been considered previously as an approximate position of the corner for purpose of analysis of the north line of section 10. Prior to searching for more reliable evidence of the subject corner, the distances reported in the 1878 record were used to approximate the position of the corner, as held at that time. This analysis yielded the conclusion that the aforementioned t-post was most likely 16 to 20 feet north of the corner as held in 1878. Excavation in the vicinity of the computed position of the corner revealed numerous rocks surrounding fragments of a cedar post. Pieces of metal bracing hardware was also found in this immediate vicinity. No such evidence was found in the vicinity of the t-post to the north. The numerous rocks and post fragments clearly appeared in the field to represent the old corner and associated rocks. Substantial manual excavation in this vicinity did not reveal the rock described in the 1868 record. Several of the found rocks were of similar dimension but none could be confirmed to be the specific rock referenced in that entry. A large rock, being 22 inches east-west by 20 inches north-south by 15 inches tall (as measured on the north edge) was found embedded in the ground immediately south of the fragments of post and other rocks. The fragments of cedar post were accepted as providing the best available evidence of the corner. A Harrison monument was set in place of this evidence, anchored with concrete to the north side of the aforementioned large rock. The monument was surrounded by several of the other smaller rocks found during excavation.

This corner was originally established as a wood post in 1820.



Kenneth E. Hedge
Kenneth E. Hedge, County Surveyor

James S. Swift
James S. Swift, IN LS 20200054
October 15, 2019

Jackson Township

Section 4 T17N, R2W	Section 3 T17N, R2W
Section 9 T17N, R2W	Section 10 T17N, R2W