

# SECTION CORNER RECORD

# SW 600-300

## BOONE COUNTY SURVEYOR'S OFFICE

### DATA FOR CORNER 2 ONLY:

State Plane grid coordinates NAD83 (2011):

North: 1713689.49 East: 3109261.13 (U.S. survey feet)

Type of monument: Harrison, 4" disk 'Section Corner'

Depth: Four inches above adjacent ground

### Indiana tie card references:

IN02\_T18NR1W33\_80 IN02\_T18NR1W34\_72

IN02\_T17NR1W04\_08 IN02\_T17NR1W03\_00

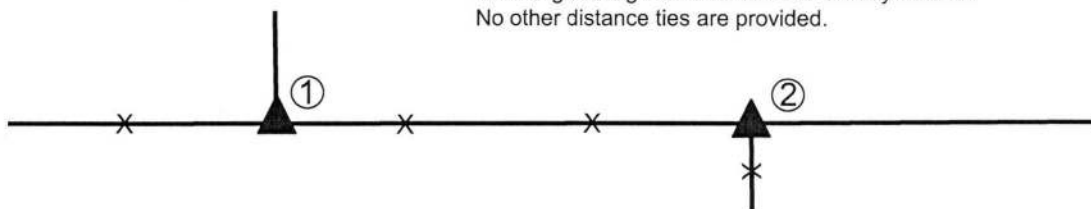
① S.E. Corner, Section 33  
S.W. Corner, Section 34  
T 18 N, R 1 W  
POSITION NOT YET DETERMINED  
SEE NOTES

② N.W. Corner, Section 3  
N.E. Corner, Section 4  
T 17 N, R 1 W  
HARRISON MONUMENT SET



### CORNER WITNESS DETAIL

SCALE 1" = 60'

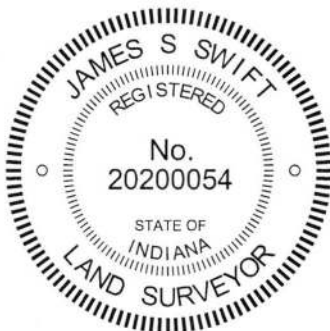


Note: The Harrison monument marking Corner 2 is situated at the east edge of a wood corner post at the intersection of fences to the south and west, witnessed by an orange fiberglass lathe labeled 'Survey Marker.' No other distance ties are provided.

The Harrison monument at Corner 2 was set in place of a stone found. The precise position of Corner 1 has not yet been established as of the date of publication of this document.

A BCS record of February 22, 1894 states, with respect to Corner 2, "Found from red oak stump after running line." The record does not specify the monument found. No specific descriptions of Corner 1 were found in the BCS Surveyor's Record beyond the original establishment of the corner as a wood post in 1819. An entry of September 30, 1971 calls Corner 1 as "Stone Found Railroad Rail put in" but no further information was found with respect to this entry and it is believed most likely to be a reference a different corner entirely.

The stone at Corner 2 was found with the top approximately 2 inches above flush at the east edge of an ancient corner post, being at the corner of fences to the south and west. The stone is known to have been held as marking the corner by numerous surveys in the past including a survey by Dewey L. Witte, LS #29800022, recorded in Survey Book 11, pages 16-17 in the Office of the Boone County Recorder and a survey by Mark A. Schepers, LS #29500001, recorded in Survey Book 18, page 63 in said Recorder's Office. The stone is also shown as marking the Corner 2 on Bruner Minor Plat recorded in Plat Book 14, page 27 in said Recorder's Office. The stone was found, apparently undisturbed in May, 2018. The position of the stone matched closely with the position shown on the aforementioned surveys and plat. The stone was horizontal and oriented NW-SE. It measured 21 inches NW-SE by 10 inches NE-SW by 8 inches tall. A clear and distinct etched "+" mark was found on the approximate top center of the rock. Although, evidently not disturbed in position in recent years, the stone was not particularly stable in the ground, and was able to be moved with a shovel with reasonably minimal effort. Being neither vertical nor oriented in cardinal directions, the stone does not fit the characteristics associated with most found and accepted corner stones. However, the mark on the stone was readily visible and it is known to have been held as marking the corner by numerous surveyors. Given the obvious mark on the top of the stone and the acceptance of the monument as marking the corner by previous surveyors along with a lack of obvious contrary evidence, the stone was held as marking Corner 2. The stone was removed and another, smaller, though vertical, stone was found below. The lower stone was left in place and a Harrison Monument was set in place of the etched mark on the top stone on May 16, 2019. Minimal uncertainty is associated with the position of Corner 2, as monumented. However, significant uncertainty is associated with the position of Corner 1. The two recorded surveys referenced above both call Corner 1 as a wood corner post found approximately 148 feet west of the stone. The Bruner Minor Plat, which defines the properties to the northeast of Corner 1 and southeast of Corner 2 shows Corner 1 as being 167.6 feet (254 links) west of the stone at Corner 2, matching the original federal offset at this corner recorded in 1820. Hence, an uncertainty of approximately 20 feet east-west is attributed to the position of Corner 1. The post called in the surveys was found and is notably the only physical evidence observed of the line bearing north from Corner 1. As additional research is required to resolve the conflict between the surveys and plat, the final position of Corner 1 will be established at a later date. The position of Corner 2 is affirmed at this time in support of establishing alignment for corners to the east in association with the imminent reconstruction of the County Road 600 South bridge over Grassy Branch. Corner 1 was originally established as a wood post in 1819 and Corner 2 was originally established as a wood post in 1820.



*Kenneth E. Hedge*  
Kenneth E. Hedge, County Surveyor

*James S. Swift*  
James S. Swift, IN LS 20200054  
July 9, 2019

### Harrison Township

Section 33 T18N, R1W	Section 34 T18N, R1W
Section 4 T17N, R1W	Section 3 T17N, R1W

# SECTION CORNER RECORD

SW 650-200

## BOONE COUNTY SURVEYOR'S OFFICE

State Plane grid coordinates NAD83 (2011):

North: 1710975.78 East: 3114553.513 (U.S. survey feet)

Type of monument: Harrison, 4" disk 'Section Corner'

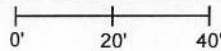
Depth: One inch below adjacent road surface

Indiana tie card references:

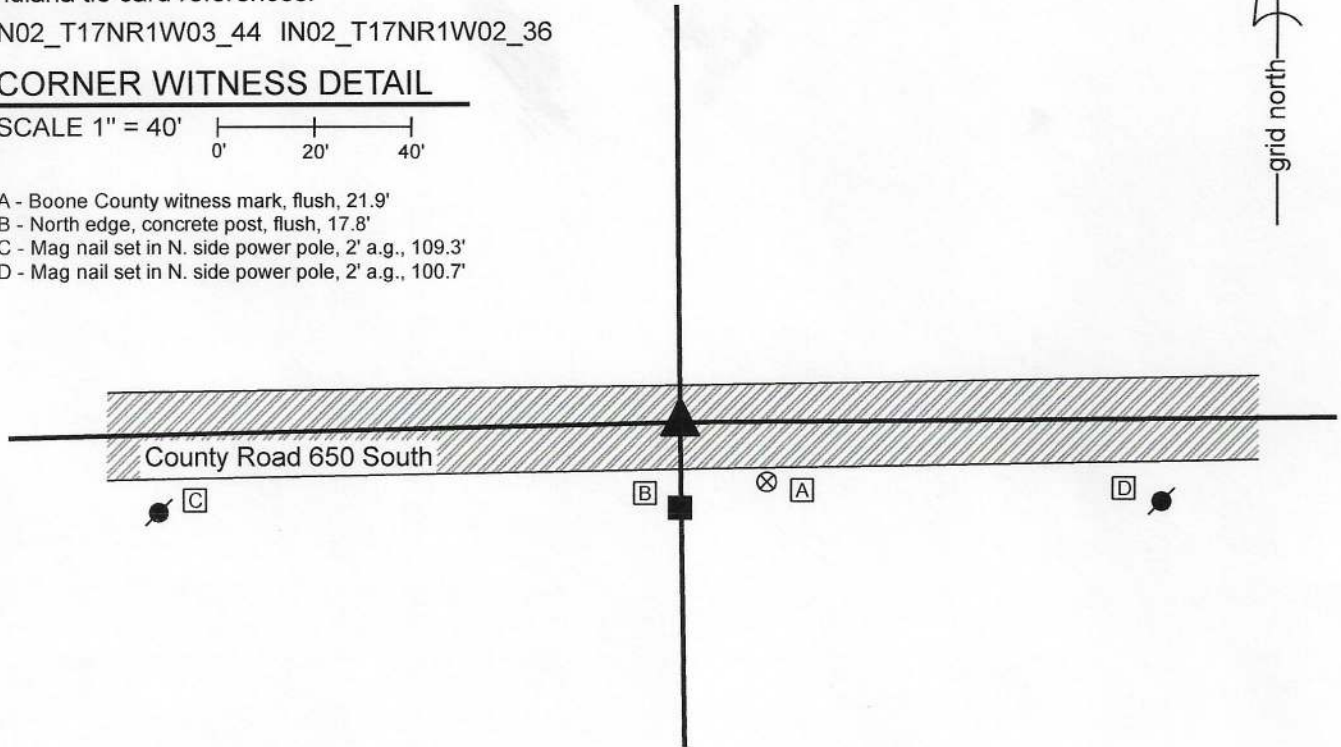
IN02\_T17NR1W03\_44 IN02\_T17NR1W02\_36

### CORNER WITNESS DETAIL

SCALE 1" = 40'



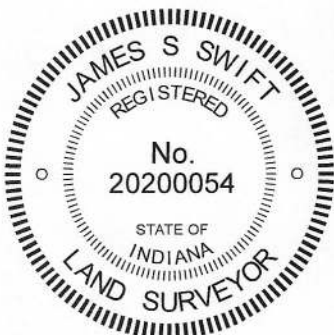
- A - Boone County witness mark, flush, 21.9'
- B - North edge, concrete post, flush, 17.8'
- C - Mag nail set in N. side power pole, 2' a.g., 109.3'
- D - Mag nail set in N. side power pole, 2' a.g., 100.7'



The Harrison monument was set over a stone found.

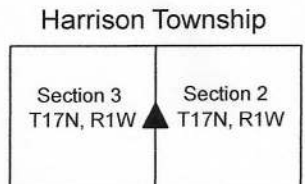
A BCS record of April 6-7, 1858 states, with respect to this corner, "Reestablished from old wit tree. Rock 16x19." No recent BCS tie cards were found referencing this corner.

Excavation was performed at this corner on July 16, 2020. Prior to excavation, no metal monuments were found marking the corner. A concrete post on the south side of County Road 650 south provided reliable accessory evidence of the corner. An estimated position for the corner, being in the center of the east-west road, immediately north of the concrete post fit well with proximate evidence in all cardinal directions. Excavation at this position revealed a stone found at 8 inches deep. The stone was 16 inches tall along the west side, which was fully exposed. A vague, shallow etched "+" mark was observed at the top, center, high point of the stone. The 19 inch dimension recited in the 1858 record was not observed. The stone measured 11 inches N-S by 11 inches E-W. The NE-SW dimension measured 9 inches. The stone was embedded in the clay layer below the road, protruding approximately 4 inches into the bottom of the road bed. The stone was accepted as marking the corner. It is thought most likely that the 1858 record intended to state 16x9 inches, rather than 16x19 inches. BCS records from the 1850s often only mention two dimensions, which have been observed to represent the extreme (smallest and largest) dimensions of the stone. A Harrison monument was set directly over the etched "+" mark of the stone. This corner was originally established as a wood post in 1820.



*Kenneth E. Hedge*  
Kenneth E. Hedge, County Surveyor

*James S. Swift*  
James S. Swift, IN LS 20200054  
July 21, 2020



# SECTION CORNER RECORD

SW 650-300

## BOONE COUNTY SURVEYOR'S OFFICE

State Plane grid coordinates NAD83 (2011):

North: 1710849.90 East: 3109303.11050 (U.S. survey feet)

Type of monument: Harrison, 4" disk 'Section Corner'

Depth: Flush with surrounding ground

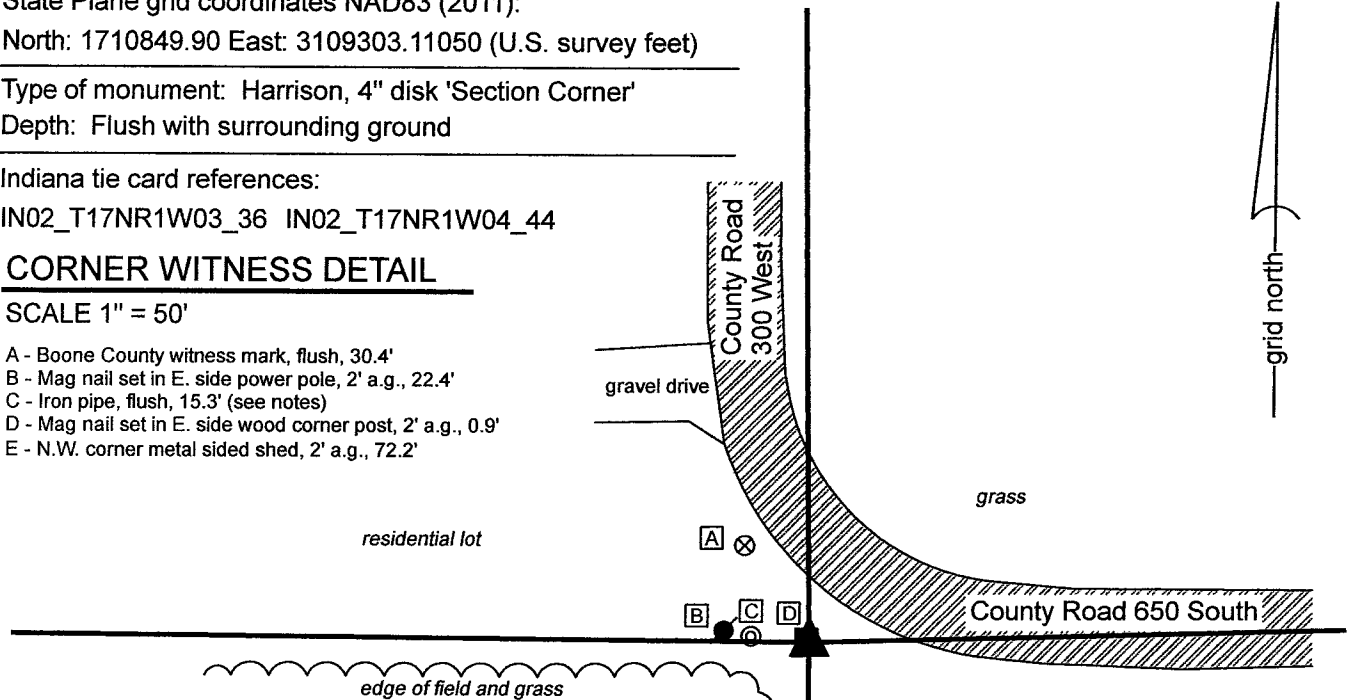
Indiana tie card references:

IN02\_T17NR1W03\_36 IN02\_T17NR1W04\_44

### CORNER WITNESS DETAIL

SCALE 1" = 50'

- A - Boone County witness mark, flush, 30.4'
- B - Mag nail set in E. side power pole, 2' a.g., 22.4'
- C - Iron pipe, flush, 15.3' (see notes)
- D - Mag nail set in E. side wood corner post, 2' a.g., 0.9'
- E - N.W. corner metal sided shed, 2' a.g., 72.2'



The Harrison monument was set in place of a concrete monument. A BCS record of June 19, 1851 states, with apparent reference to this corner, "set rock 11x17."

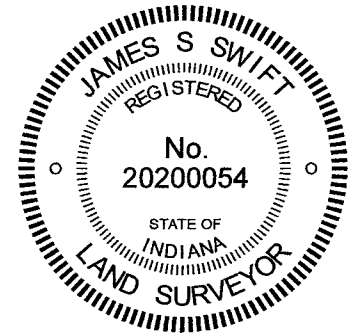
No recent BCS tie cards were found referencing this corner.

Due to the presence of numerous underground utilities in the immediate vicinity of this corner, substantial excavation was not performed at the corner. Reconnaissance and research of the deeds for adjoining land and other land for which the description is tied to the corner indicates that three different objects could be treated as the corner. The object accepted as marking the corner was a concrete monument, 4 inches by 4 inches, 24 inches long. The origin of the monument is not known, but it has been held to mark the corner by numerous previous surveys. A survey by Ronald Wharry recorded as Instrument 200600006126 calls it out as the corner. A survey by Jonathon Hause recorded as Instrument 201700000714 calls the corner a concrete fence post. A survey by Hause recorded as Instrument 201200001945 calls the corner a wood head post. Deeds for adjoining or proximate land to the northwest (I 0011867), southwest (I 0505114) and southeast (I 201500012245) appear to hold either the concrete monument or a wood corner post found one foot northwest of the concrete monument.

The deed for the adjoining land immediately to the northwest (I 2005011055) appears to hold an iron pipe which was found 15.3 feet west and slightly north of the concrete monument. Another iron pipe called for in said I 2005011055 as marking the northwest corner of that parcel was also found and fits well with the iron pipe found west of the concrete monument. It is noted that the found iron pipe, 15.3 feet west of the corner, fits well with the approximate center of the short section of north-south road immediately north of the corner. However, it does not fit with the preponderance of evidence, including the references in the aforementioned deeds and surveys as well as substantial evidence of occupation immediately to the south and the approximate center of the north-south road, from approximately 500 feet south of the corner. The concrete monument fit better with this evidence.

Probing in the area encompassed by the concrete monument, wood post and iron pipe did not reveal a stone found. As noted above, underground utilities prevent substantial excavation at this corner. The center of the top of the concrete monument was held as the corner. The concrete monument was removed and replaced with a Harrison monument on November 12, 2020. The Harrison monument is 0.8 foot southeast of the southeast edge of the aforementioned wood post. The iron pipe was left in place, 15.3 feet westerly of the corner. It is strongly recommended that in retracement of the adjoining property to the northwest (Matthew and Nancy Dennis, I 2005011055), the westerly and northerly lines be treated as though they were measured from the iron pipe, which appears to be the case.

This corner was originally established as a wood post in 1820.



Harrison Township

Section 4 T17N, R1W	Section 3 T17N, R1W
------------------------	------------------------

*Kenneth E. Hedge*  
Kenneth E. Hedge, County Surveyor

*James S. Swift*  
James S. Swift, IN LS 20200054

December 2, 2020

# SECTION CORNER RECORD

SW 700-200

## BOONE COUNTY SURVEYOR'S OFFICE

State Plane grid coordinates NAD83 (2011):

North: 1708320.48 East: 3114596.24 (U.S. survey feet)

Type of monument: Harrison, 4" disk 'Section Corner'

Depth: One inch above adjacent ground.

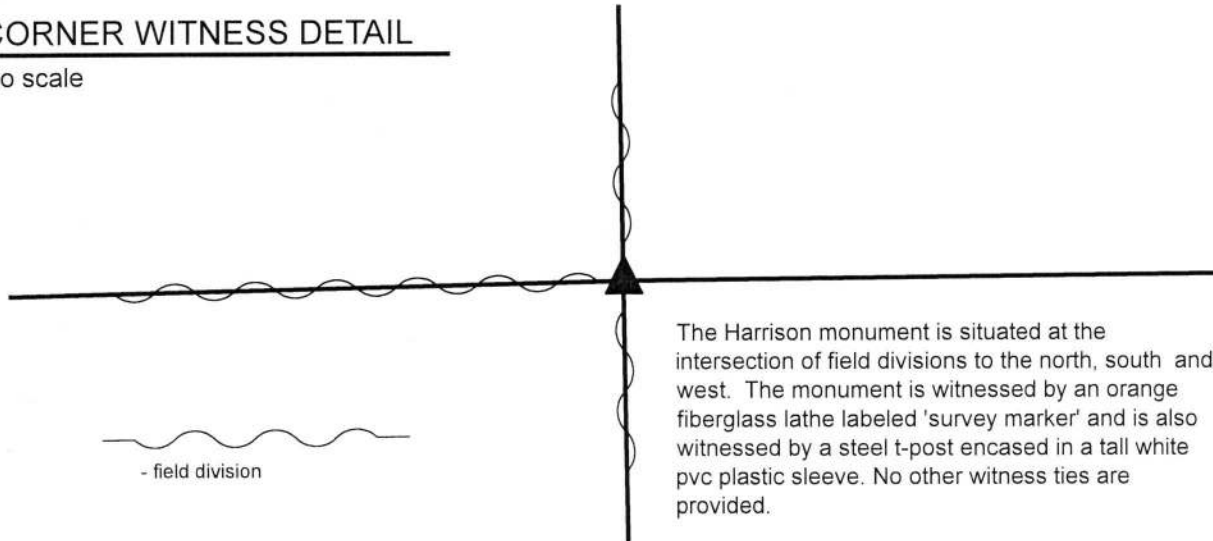
Indiana tie card references:

IN02\_T17NR1W03\_80 IN02\_T17NR1W02\_72

IN02\_T17NR1W10\_08 IN02\_T17NR1W11\_00

### CORNER WITNESS DETAIL

No scale



The Harrison monument is situated at the intersection of field divisions to the north, south and west. The monument is witnessed by an orange fiberglass lathe labeled 'survey marker' and is also witnessed by a steel t-post encased in a tall white pvc plastic sleeve. No other witness ties are provided.

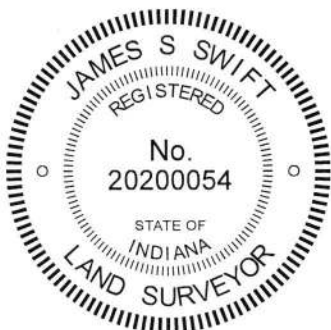
The Harrison monument was set over a stone found.

A BCS record dated April 22-24, 1883 states, with respect to this corner, "Reest. stone from O.B. tree. Stone as place +."

No recent BCS tie cards were found referencing this corner.

Excavation was performed at this corner on September 27, 2019. Prior to excavation, a steel t-post within a tall white PVC plastic sleeve was observed at the intersection of field divisions to the north, south and west. Excavation revealed that the t-post was driven into the base of an old wood corner post, broken off at ground level. The base of the post was observed to be cedar, 8 inch by 8 inch square. Excavation around the post revealed numerous small rocks and one large rock. The large rock is approximately 1 foot north of the base of the post. The top of this stone was found at 10 inches below grade. The stone was observed to be 21 inches E-W by 11 inches N-S with the top 14 inches exposed. The south side of the stone is flat and vertical and clearly the stone is much larger than the just the exposed 14 inches. A vague etched "+" mark was observed on the top of the stone at the high point, near the south edge of the stone. The stone was clearly not bracing the post and was held as marking the corner. The mark on the stone was held as the specific position of the corner. The top of the stone and the south edge of the stone were encased in concrete and a Harrison monument was set over the etched mark on the stone, anchored primarily to the vertical south edge of the stone. No rebars or other artificial evidence were found in the vicinity of the post.

This corner was originally established as a wood post in 1820.



*Kenneth E. Hedge*  
 Kenneth E. Hedge, County Surveyor

*James S. Swift*  
 James S. Swift, IN LS 20200054  
 October 15, 2019

Harrison Township

Section 3 T17N, R1W	Section 2 T17N, R1W
Section 10 T17N, R1W	Section 11 T17N, R1W



# SECTION CORNER RECORD

SW 700-300

## BOONE COUNTY SURVEYOR'S OFFICE

State Plane grid coordinates NAD83 (CORSS96):

North: 1708203.56 East: 3109308.43 (U.S. survey feet)

Type of monument: Drill hole on top, center of stone

Depth: flush with adjacent ground

Indiana tie card references:

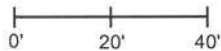
IN02\_T17NR1W04\_80 IN02\_T17NR1W03\_72

IN02\_T17NR1W09\_08 IN02\_T17NR1W10\_00



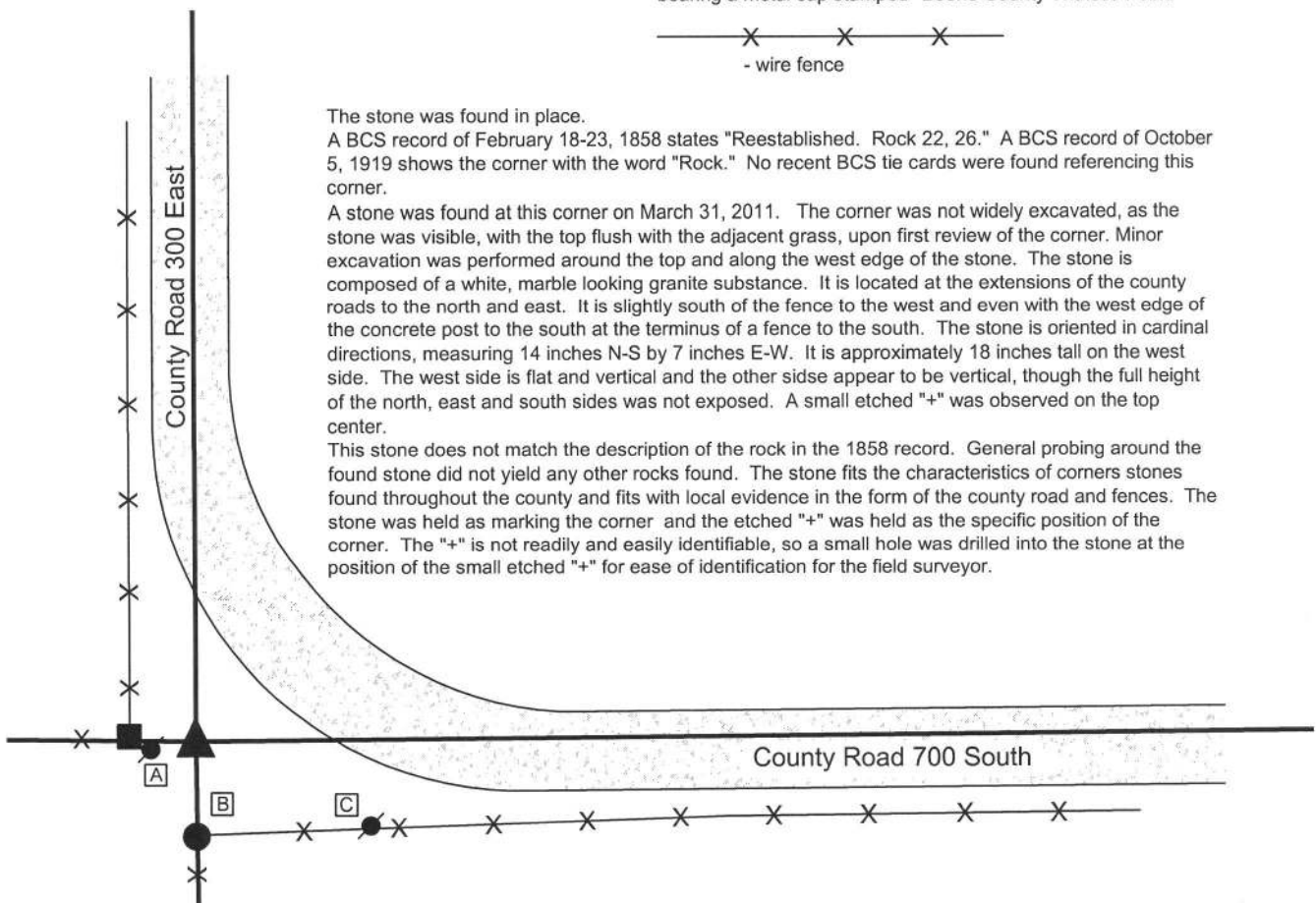
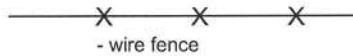
### CORNER WITNESS DETAIL

SCALE 1" = 40'



- A - Mag nail set in E. side power pole, 1.5' a.g., 9.38'
- B - N. edge, round concrete post, 1' a.g., 19.00'
- C - Mag nail set in W. side power pole, 2' a.g., 49.21'

Boone County witness mark is a 3/8" diameter x 2' long rebar bearing a metal cap stamped "Boone County Witness Point."

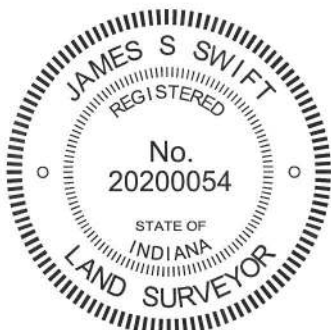


The stone was found in place.

A BCS record of February 18-23, 1858 states "Reestablished. Rock 22, 26." A BCS record of October 5, 1919 shows the corner with the word "Rock." No recent BCS tie cards were found referencing this corner.

A stone was found at this corner on March 31, 2011. The corner was not widely excavated, as the stone was visible, with the top flush with the adjacent grass, upon first review of the corner. Minor excavation was performed around the top and along the west edge of the stone. The stone is composed of a white, marble looking granite substance. It is located at the extensions of the county roads to the north and east. It is slightly south of the fence to the west and even with the west edge of the concrete post to the south at the terminus of a fence to the south. The stone is oriented in cardinal directions, measuring 14 inches N-S by 7 inches E-W. It is approximately 18 inches tall on the west side. The west side is flat and vertical and the other side appear to be vertical, though the full height of the north, east and south sides was not exposed. A small etched "+" was observed on the top center.

This stone does not match the description of the rock in the 1858 record. General probing around the found stone did not yield any other rocks found. The stone fits the characteristics of corners stones found throughout the county and fits with local evidence in the form of the county road and fences. The stone was held as marking the corner and the etched "+" was held as the specific position of the corner. The "+" is not readily and easily identifiable, so a small hole was drilled into the stone at the position of the small etched "+" for ease of identification for the field surveyor.



*Kenneth E. Hedge*  
Kenneth E. Hedge, County Surveyor

*James S. Swift*  
James S. Swift, IN LS 20200054

March 30, 2012, Revised March 7, 2013

Harrison Township

Section 4 T17N, R1W	Section 3 T17N, R1W
Section 9 T17N, R1W	Section 10 T17N, R1W

PHOTOGRAPHIC DOCUMENTATION

Date of photography: March 31, 2011 & December 2, 2011

View of the stone with the west side partially exposed. March 31, 2011.



View from above, showing the stone and the hole drilled into the top. December 2, 2011.



View from the west, looking across the stone and east along County Road 300 South.



View from the north, looking across the stone and south to the concrete post at the terminus of a north-south fence.



For details and documentation, refer to related sheet "Section Corner Record."