

# SECTION CORNER RECORD

SW 600-700

## BOONE COUNTY SURVEYOR'S OFFICE

State Plane grid coordinates NAD83 (2011):  
 North: 1713621.22 East: 3088047.32 (U.S. survey feet)  
 North: 1713621.05 East: 3088004.40 (U.S. survey feet)

Type of monument: Harrison, 4" disk 'Section Corner'  
 Depth: Six inches below adjacent gravel road surface

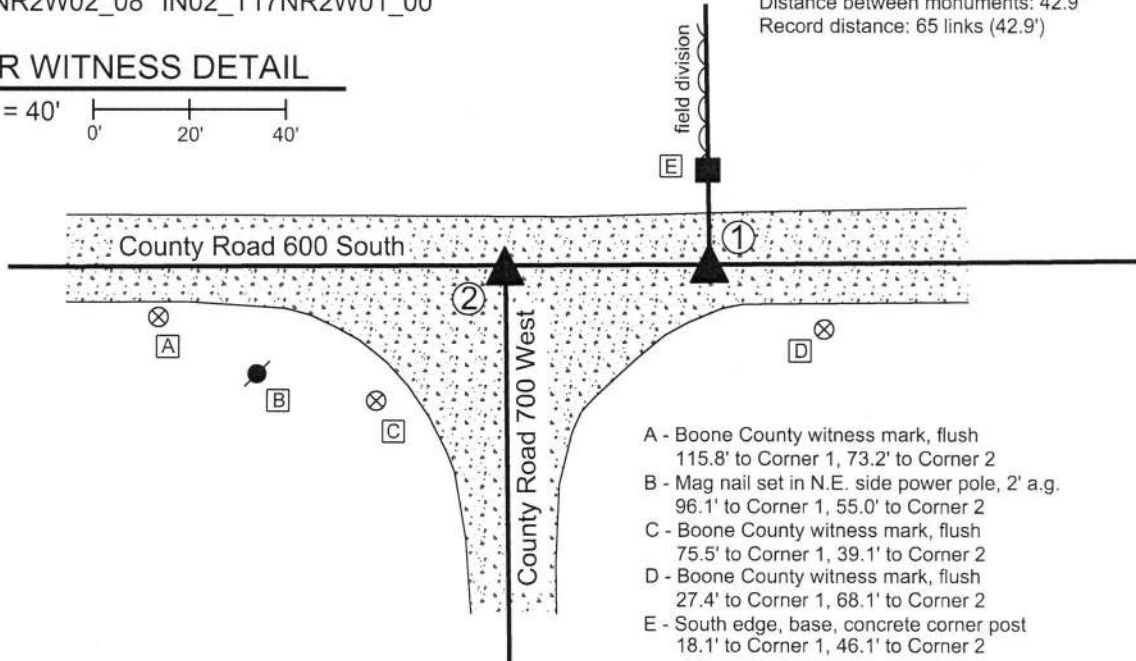
Indiana tie card references:  
 IN02\_T18NR2W35\_80 IN02\_T18NR2W36\_72  
 IN02\_T17NR2W02\_08 IN02\_T17NR2W01\_00

- ① S.E. Corner, Section 35  
 S.W. Corner, Section 36  
 T 18 N, R 2 W
- ② N.W. Corner, Section 1  
 N.E. Corner, Section 2  
 T 17 N, R 2 W

Distance between monuments: 42.9'  
 Record distance: 65 links (42.9')

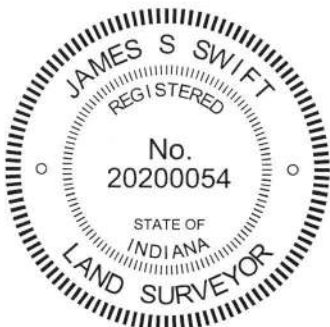
### CORNER WITNESS DETAIL

SCALE 1" = 40'



- A - Boone County witness mark, flush  
 115.8' to Corner 1, 73.2' to Corner 2
- B - Mag nail set in N.E. side power pole, 2' a.g.  
 96.1' to Corner 1, 55.0' to Corner 2
- C - Boone County witness mark, flush  
 75.5' to Corner 1, 39.1' to Corner 2
- D - Boone County witness mark, flush  
 27.4' to Corner 1, 68.1' to Corner 2
- E - South edge, base, concrete corner post  
 18.1' to Corner 1, 46.1' to Corner 2

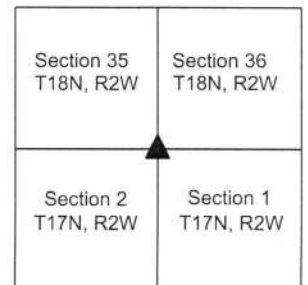
The Harrison monuments at both corners were set over stones found.  
 A BCS record dated November 20-21, 1871 states, with respect to Corner 1, "Reest. from trees (one a stp). Set two rocks. One 18.14.11 +. Top one 20.16.11 +." A BCS record dated May 22, 1896 states, with respect to Corner 2, "Set Rock 8x10x12 +. Estab. 65 links W. of Cors to 35-36."  
 A BCS tie card referencing Corner 2, dated April 17, 1972 states, "No stone - RRR put in."  
 These corners were excavated on September 10, 2018. Prior to excavation, a rebar was found at 2 inches deep in the gravel road, situated against the north edge of a vertical section of railroad rail, the top of which was at 4 inches deep. These monuments appeared to be marking Corner 2. No metal monuments were found near Corner 1 prior to excavation. Excavation at Corner 1 revealed a stone found at 16 inches deep. The stone had a distinct etched + mark on the top and measured 20 inches N-S by 16 inches E-W with the top 8 inches exposed. The full height of 11 inches was measured on the west edge. Probing indicated that another stone is situated below the top stone. These stones were accepted as being the same monuments described in the 1871 record and were held as marking Corner 1. A Harrison monument was set directly over the etched + mark on the top stone. Excavation at Corner 2 revealed a stone found at 18 inches deep. This stone also had a distinct + mark on top. The stone measured one inch short of the 1896 record dimensions in all directions, being 9 inches N-S by 7 inches E-W by 11 inches tall. This stone was accepted as being the same monument described in the 1896 record. The specific position of Corner 2 was established on the township line as defined by Corner 1 and the standard corner one half mile west (see Corner SW 600-750), over the north edge of the stone, 0.4 foot north of the + mark). The railroad rail, removed during excavation, had been 1.4 feet south and 1.4 feet west of the final monumented position for Corner 2.  
 The distance between the two stones is 42.9 feet or 65 links, matching the original federal closing distance and the offset reported in the 1895 record. Corner 1 was originally established as a wood post in 1819. Corner 2 was originally established as a wood post in 1820.



*Kenneth E. Hedge*  
 Kenneth E. Hedge, County Surveyor

*James S. Swift*  
 James S. Swift, IN LS 20200054  
 September 19, 2018

Jackson Township



# SECTION CORNER RECORD

SW 600-750

## BOONE COUNTY SURVEYOR'S OFFICE

State Plane grid coordinates NAD83 (2011):

Corner 1: North: 1713610.00 East: 3085381.56 (U.S. survey feet)

Corner 2: North: 1713609.96 East: 3085352.55 (U.S. survey feet)

Type of monument: Harrison, 4" disk 'Section Corner'

Depth: Six inches below adjacent road surface

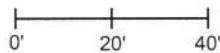
Indiana tie card references:

IN02\_T18NR2W35\_76 IN02\_T17NR2W02\_04



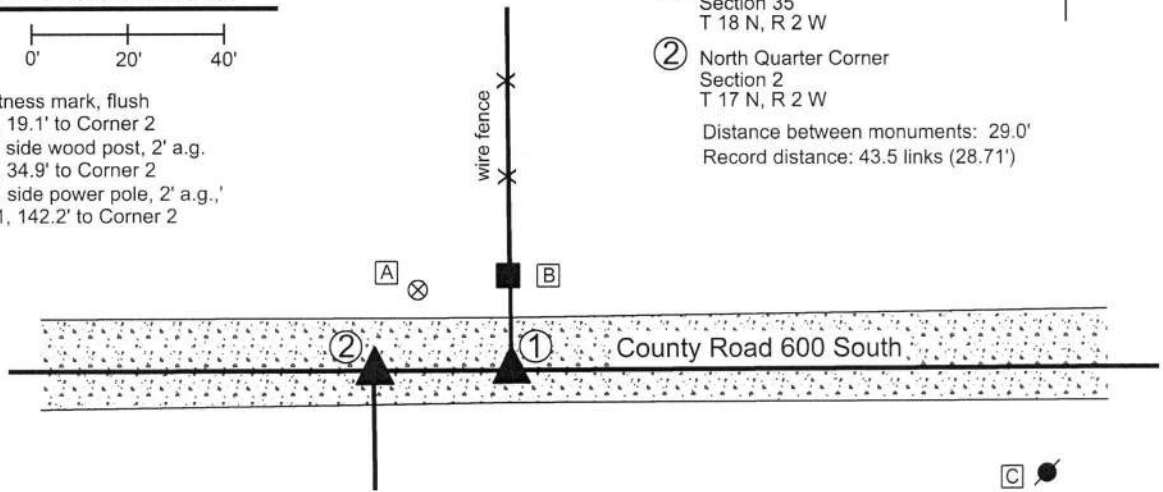
### CORNER WITNESS DETAIL

SCALE 1" = 40'



- A - Boone County witness mark, flush  
25.9' to Corner 1, 19.1' to Corner 2
- B - Mag nail set in S. side wood post, 2' a.g.  
20.4' to Corner 1, 34.9' to Corner 2
- C - Mag nail set in N. side power pole, 2' a.g.,  
113.7' to Corner 1, 142.2' to Corner 2

- ① South Quarter Corner  
Section 35  
T 18 N, R 2 W
  - ② North Quarter Corner  
Section 2  
T 17 N, R 2 W
- Distance between monuments: 29.0'  
Record distance: 43.5 links (28.71')



The Harrison monuments at both corners were set over stones found.

A BCS record dated July 20, 1865 states, with respect to Corner 2, "Reestablished from stump of Oak bearing tree. Found blaze and notch. Set a Rock 24,22,11 marked +." A BCS record dated November 21, 1871 states, with respect to Corner 1, "Reest. 43 1/2 links E. of B sec. 2. Set two rocks. One 7.5 1/2.4. Top one 19.17.16 +." An undated tie sheet found in the Boone County Surveyor's Office, evidently supplied by a private company, shows Corner 1 as an I.P. set 21 feet south of the post on the north side of the road with the statement "No stone. Set I.P. See Job #8000104."

Corner 1 was excavated on September 10, 2018. Prior to excavation, a section of 5/8 inch rebar with a yellow plastic cap, markings illegible, was found badly disturbed, ostensibly marking Corner 1. Excavation revealed the stone described in the 1871 record at 12 inches deep. The stone has a flat top with a distinct etched "+" mark on the top. The height of the stone was found to be 17 inches along the west edge. The stone measured 16 inches N-S with the top 12 inches exposed. The E-W dimension was 13 inches E-W with 12 inches exposed, though was clearly larger in the E-W dimension toward the bottom of the rock. The stone was accepted as being the same monument described in the 1871 record and was held as marking Corner 1. A Harrison monument was set directly over the etched "+" mark on the top of the stone. Probing did not reveal the presence of the lower stone, but this is believed to be due to the substantially smaller size of the lower stone. The rebar, removed during excavation, had been 0.5 foot south and 0.5 foot west of the mark on the stone.

Corner 2 was excavated on September 12, 2018. No metal monuments were found marking this corner prior to excavation. Excavation at a point 43 1/2 links west of Corner 1 revealed a stone found at 11 inches deep. The stone was embedded in the clay layer below the road and had a distinct etched + mark on the top, sloping side of the stone. With the top 9 inches of the stone exposed, it measured 9 inches N-S by 13 inches E-W and was clearly much larger yet further down. The specific position of Corner 2 was established on the township line as defined by Corner 1 and the standard corner one-half mile west (see Corner SW 600-800), in-line with the etched mark on the stone. This point fell over the body of the stone, 0.3 foot north of the high point of the rock. The distance between the corners as defined by the etched marks on each stone is 0.3 foot longer than the 43 1/2 link separation reported in the 1871 record. It is noted that 43.5 links is the average of the original closing distances reported at the northeast and northwest corners of section 2. Corner 1 was originally established in 1819. Corner 2 is not an original federal corner.



*Kenneth E. Hedge*  
Kenneth E. Hedge, County Surveyor

*James S. Swift*  
James S. Swift, IN LS 20200054  
September 19, 2018

Jackson  
Township

Section 35  
T18N, R2W

Section 2  
T17N, R2W

# SECTION CORNER RECORD

SW 600-800

## BOONE COUNTY SURVEYOR'S OFFICE

State Plane grid coordinates NAD83 (2011):

North: 1713606.38 East: 3082729.46 (U.S. survey feet)

North: 1713605.98 East: 3082716.46 (U.S. survey feet)

Type of monument: INDOT Type B Monument

Depth: Flush with adjacent road surface

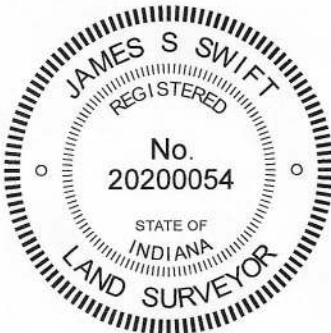
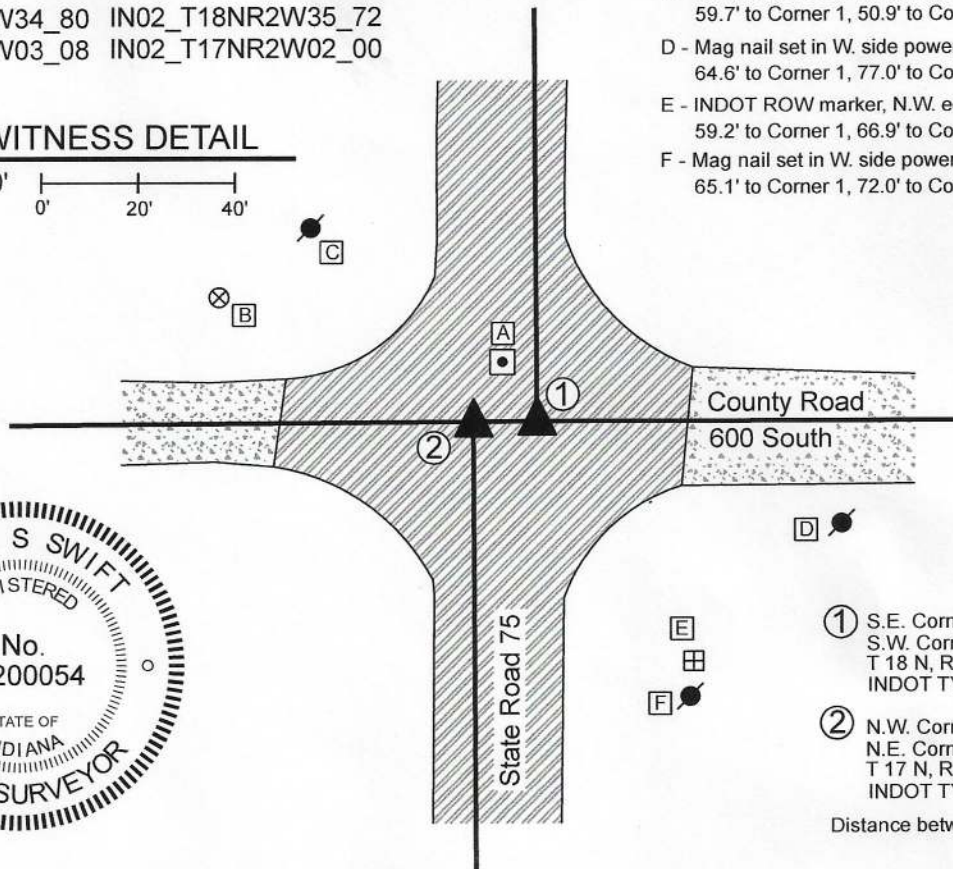
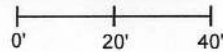
Indiana tie card references:

IN02\_T18NR2W34\_80 IN02\_T18NR2W35\_72

IN02\_T17NR2W03\_08 IN02\_T17NR2W02\_00

### CORNER WITNESS DETAIL

SCALE 1" = 40'



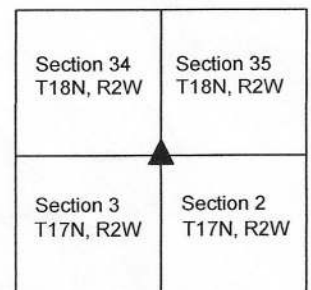
- A - INDOT Type B monument, flush  
14.3 to Corner 1, 14.2' to Corner 2
- B - Boone County witness mark, flush,  
70.6' to Corner 1, 58.8' to Corner 2
- C - Mag nail set in S.E. side power pole, 2' a.g.  
59.7' to Corner 1, 50.9' to Corner 2
- D - Mag nail set in W. side power pole, 2' a.g.  
64.6' to Corner 1, 77.0' to Corner 2
- E - INDOT ROW marker, N.W. edge  
59.2' to Corner 1, 66.9' to Corner 2
- F - Mag nail set in W. side power pole, 2' a.g.  
65.1' to Corner 1, 72.0' to Corner 2

- ① S.E. Corner, Section 34  
S.W. Corner, Section 35  
T 18 N, R 2 W  
INDOT TYPE B MONUMENT
- ② N.W. Corner, Section 2  
N.E. Corner, Section 3  
T 17 N, R 2 W  
INDOT TYPE B MONUMENT

Distance between monuments: 13.0'

The INDOT Type B monuments were found in place and held as marking the respective corners. No specific descriptions of Corner 1 were found in the BCS Surveyor's Record beyond the original establishment of the corner as a wood post in 1819. The original federal notes for Corner 2 call for an offset of 22 links (14.52 feet) west. A BCS record on November 13-14, 1856 states, with respect to corner 2 and referencing a measured line from the south, "Intersected township line 14 links East of corner. Reestablished. Set Rock 12,14. No bearing trees." It is not clear from this record whether the corner was established at 14 links East, or whether it was established at the record offset of 22 links. A BCS tie card dated December, 20003 shows Corner 1 as a '1" bar bent north' and shows Corner 2 as a rebar, with a distance separation of 13.08 feet. The date when the Type B monuments were set is not known, but it is believed that they replaced the monuments shown on the 2003 tie card. The two monuments are 13.0 feet apart, very similar to the 2003 call. Uncertainties of approximately 1.5 feet may be attributed to the relative position of the monuments with respect to the federal offset of 22 links (14.52 feet) versus the measured offset of 13.0 feet. Both monuments fit well with local evidence, being in-line with the east-west roadway and being in-line with the prolongations of the respective portions of State Highway 75 to the north and south. No excavation was performed at these corners as they fall within a state highway. The Type B monuments were held as marking the respective corners. It is noted that Corner 2 falls approximately 0.2 foot south of a straight line connecting Corner 1 with the south quarter corner of section 34 (see BCS Corner SW 600-850). A third, similar monument was also found, as shown on the attached sketch. This monument does not represent a section corner and is shown for informational purposes only.

### Jackson Township



*Kenneth E. Hedge*  
Kenneth E. Hedge, County Surveyor

*James S. Swift*  
James S. Swift, IN LS 20200054

July 21, 2020

# SECTION CORNER RECORD

# SW 650-700

## BOONE COUNTY SURVEYOR'S OFFICE

State Plane grid coordinates NAD83 (2011):  
North: 1710850.66 East: 3088034.89 (U.S. survey feet)

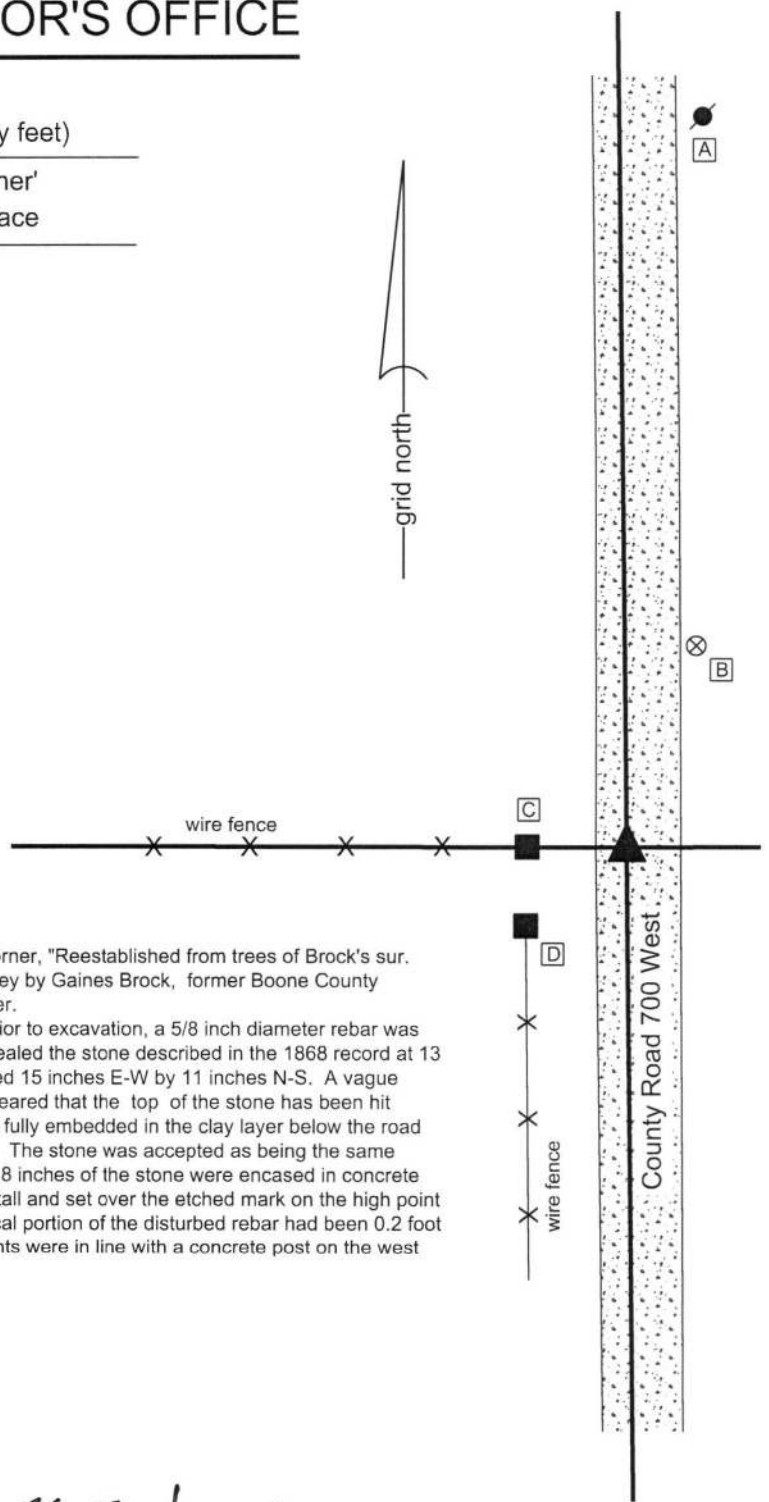
Type of monument: Harrison, 4" disk 'Section Corner'  
Depth: Six inches below adjacent gravel road surface

Indiana tie card references:  
IN02\_T17NR2W02\_44 IN02\_T17NR2W01\_36

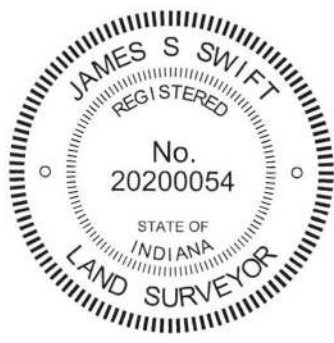
### CORNER WITNESS DETAIL

SCALE 1" = 40'  
0' 20' 40'

- A - Mag Nail set in W. side power pole, 2' a.g., 152.4'
- B - Boone County witness mark, flush, 44.3'
- C - East edge, concrete corner post, flush, 19.0'
- D - Mag nail set in E. edge, wood post, 2' a.g., 26.7'

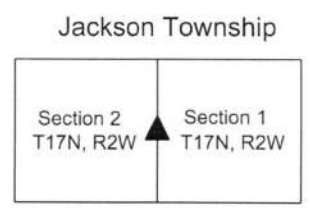


The Harrison monument was set over a stone found.  
 A BCS record dated February 25, 1868 states, with respect to this corner, "Reestablished from trees of Brock's sur. Set Rock 24,15,11 marked +." The record references an earlier survey by Gaines Brock, former Boone County Surveyor. No recent BCS tie cards were found referencing this corner.  
 Excavation was performed at this corner on September 11, 2018. Prior to excavation, a 5/8 inch diameter rebar was found, substantially bent, at the surface of the road. Excavation revealed the stone described in the 1868 record at 13 inches deep. With the top 8 inches of the stone exposed, it measured 15 inches E-W by 11 inches N-S. A vague chiseled + mark was visible at the top, high point of the stone. It appeared that the top of the stone has been hit occasionally in the past by road grading equipment. The stone was fully embedded in the clay layer below the road with the top of the stone coincident with the bottom of the road bed. The stone was accepted as being the same monument set in 1868 and was held as marking the corner. The top 8 inches of the stone were encased in concrete and a Harrison monument was broken off at approximately 5 inches tall and set over the etched mark on the high point of the stone. The rebar was removed during excavation. The vertical portion of the disturbed rebar had been 0.2 foot south and 1.8 feet east of the high point of the stone. Both monuments were in line with a concrete post on the west side of the road.  
 This corner was originally established as a wood post in 1820.



*Kenneth E. Hedge*  
 Kenneth E. Hedge, County Surveyor

*James S. Swift*  
 James S. Swift, IN LS 20200054  
 September 19, 2018



# SECTION CORNER RECORD

SW 650-800

## BOONE COUNTY SURVEYOR'S OFFICE

State Plane grid coordinates NAD83 (2011):

North: 1710803.20 East: 3082735.11 (U.S. survey feet)

Type of monument: Plug in monument box (INDOT Type B)

Depth: Flush with adjacent road surface

Indiana tie card references:

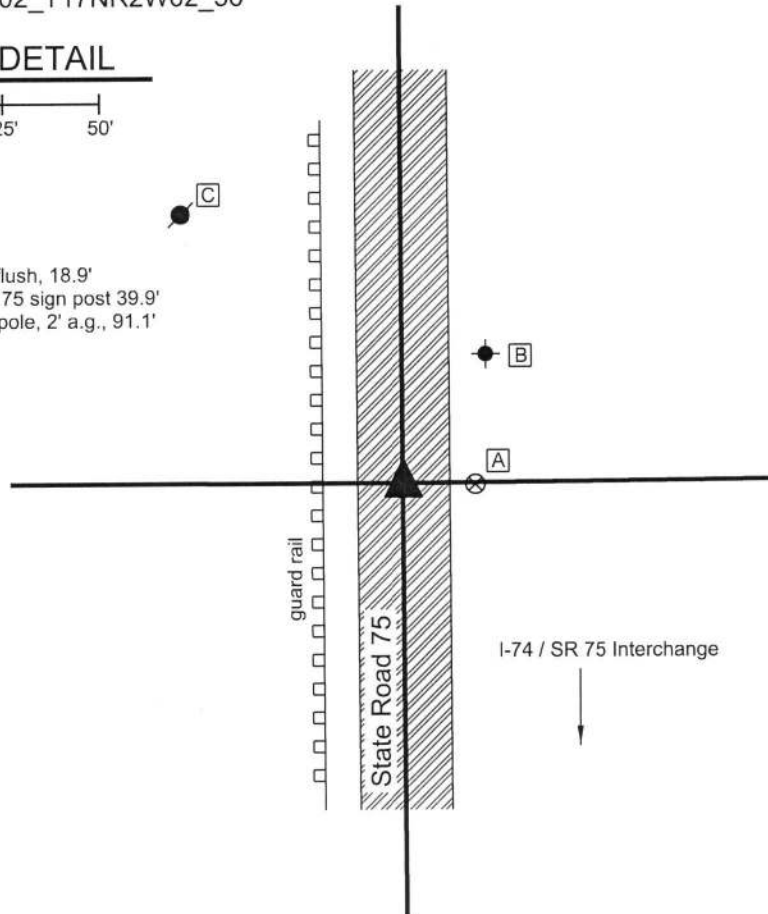
IN02\_T17NR2W03\_44 IN02\_T17NR2W02\_36

### CORNER WITNESS DETAIL

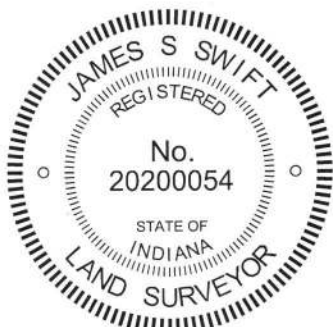
SCALE 1" = 50'



- A - Boone County witness mark, flush, 18.9'
- B - Notch cut in S.W. edge, N. IN 75 sign post 39.9'
- C - Mag nail set in S. side power pole, 2' a.g., 91.1'



The INDOT Type B monument was found in place and held as marking the corner. A BCS tie card shows dated December, 2003 shows the corner as a railroad spike in the center of State Road 75 in line with an old fence to the west. Subsequently, the spike was removed and replaced with an INDOT Type B monument. No excavation was performed at this corner as it falls in a State Road and is also on the approach to the interchange of State Road 75 and Interstate 74.



*Kenneth E. Hedge*  
Kenneth E. Hedge, County Surveyor

*James S. Swift*  
James S. Swift, IN LS 20200054  
July 31, 2019

Marion Township

Section 3 T17N, R2W	Section 2 T17N, R2W
------------------------	------------------------

# SECTION CORNER RECORD

SW 700-750

## BOONE COUNTY SURVEYOR'S OFFICE

State Plane grid coordinates NAD83 (2011):

North: 1708179.83 East: 3085407.90 (U.S. survey feet)

Type of monument: Harrison, 4" disk 'Section Corner'

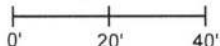
Depth: One inch below adjacent road surface

Indiana tie card references:

IN02\_T17NR2W02\_76 IN02\_T17NR2W11\_04

### CORNER WITNESS DETAIL

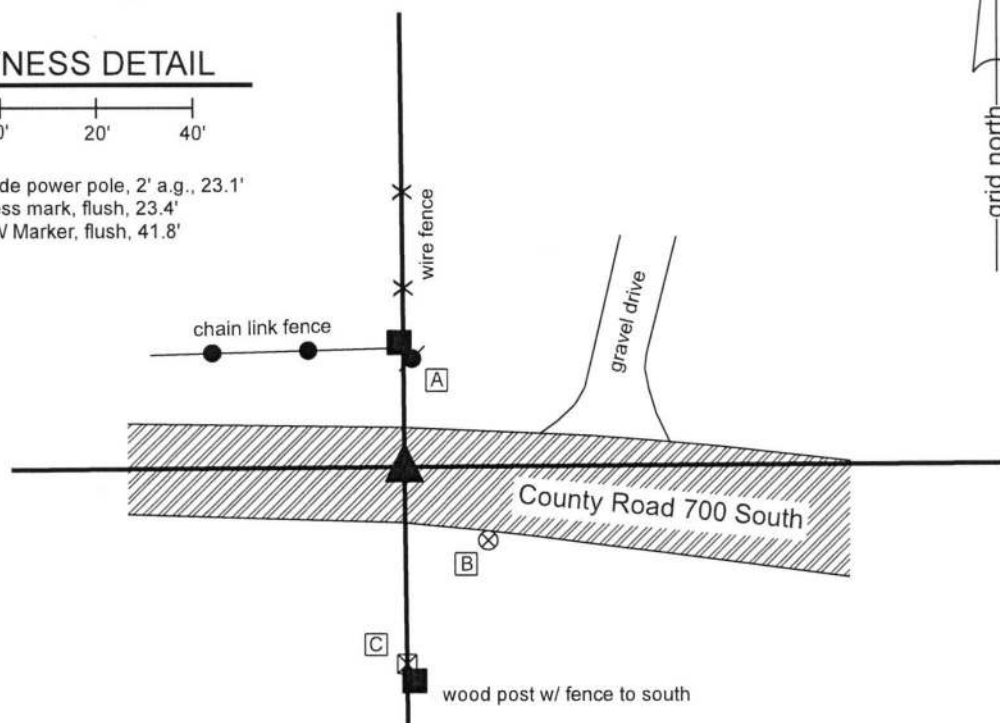
SCALE 1" = 40'



A - Mag Nail set in S. side power pole, 2' a.g., 23.1'

B - Boone County witness mark, flush, 23.4'

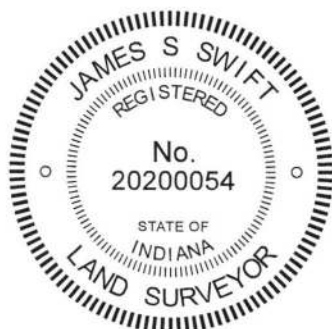
C - N. edge, INDOT RW Marker, flush, 41.8'



The Harrison monument was set in place of a railroad spike found.

A BCS record dated June 16-17, 1892 refers to this corner as a "rock that was set." No recent BCS tie cards were found referencing this corner. Excavation was performed at this corner on September 12, 2018. Prior to excavation, a railroad spike was found at 3 inches deep in a hole in the asphalt, in-line with a fence to the north and the center of the road to the west. Excavation of an area extending 3 feet north, 3.5 feet east, 2 feet south and 2.5 feet west of the spike revealed no further evidence of the corner. The bottom of the road bed was found at 13 inches deep. Excavation was performed to a minimum of 15 inches. The railroad spike fits well with local evidence in the form of being in line with the old fence to the north and the center of the road to the west. The spike was slightly west of a newer fence to the south. The position of the spike fits well with proximate corners and is believed to have been held as marking the corner for numerous surveys in the area. The spike was accepted as marking the corner and was replaced with a Harrison monument in the same position.

This corner was originally established as a wood post in 1820.



  
Kenneth E. Hedge, County Surveyor

  
James S. Swift, IN LS 20200054

October 1, 2018

Jackson  
Township

Section 2  
T17N, R2W

Section 11  
T17N, R2W

# SECTION CORNER RECORD

SW 700-800

## BOONE COUNTY SURVEYOR'S OFFICE

State Plane grid coordinates NAD83 (2011):

North: 1708157.94 East: 3082753.550 (U.S. survey feet)

Type of monument: Harrison, 4" disk 'Section Corner'

Depth: One inch below adjacent road surface

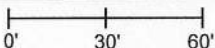
Indiana tie card references:

IN02\_T18NR2W36\_80 IN02\_T18NR1W31\_72

IN02\_T18NR2W36\_08 IN02\_T18NR1W31\_00

### CORNER WITNESS DETAIL

SCALE 1" = 60'

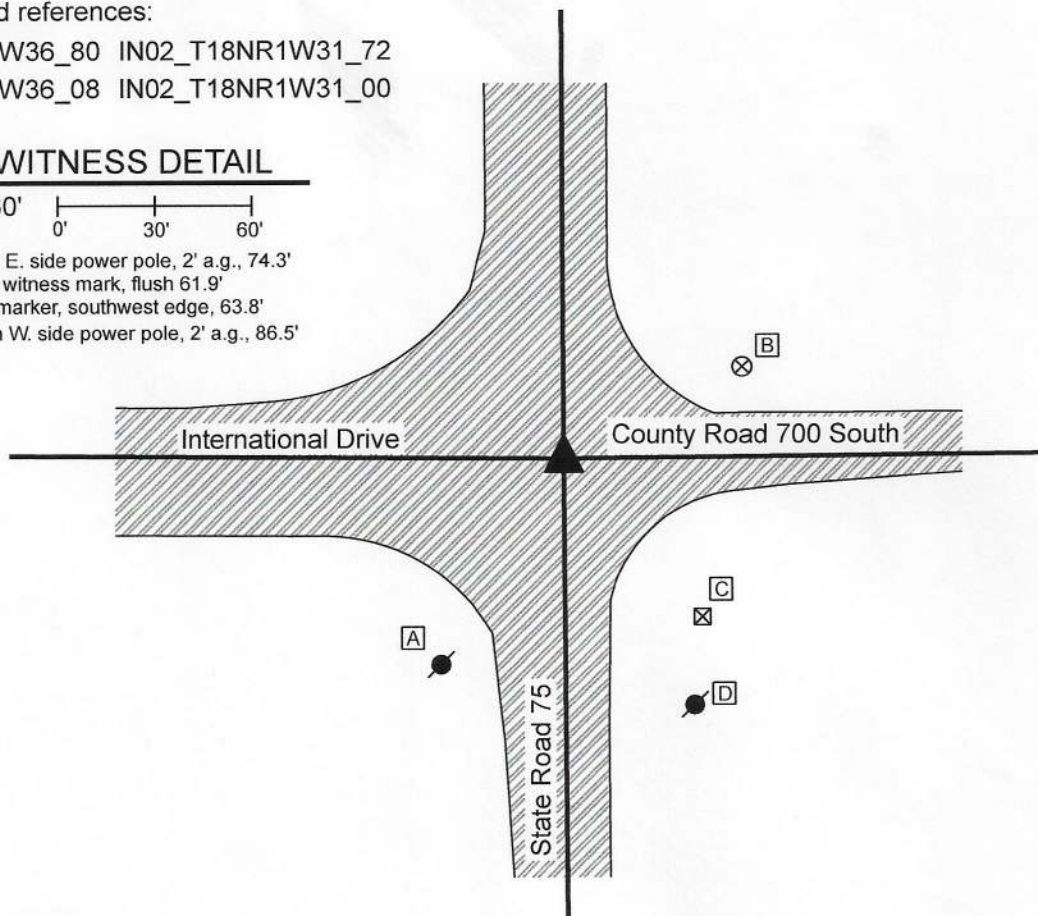


A - Mag nail set in E. side power pole, 2' a.g., 74.3'

B - Boone County witness mark, flush 61.9'

C - INDOT ROW marker, southwest edge, 63.8'

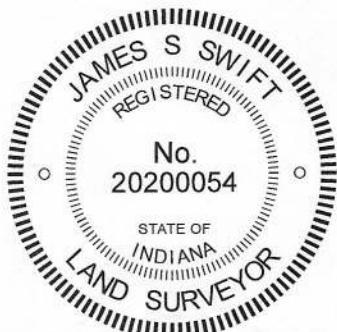
D - Mag nail set in W. side power pole, 2' a.g., 86.5'



The INDOT Type B monument was found in place and held as marking the corner.

A BCS record of February 23-25, 1858 states, with respect to this corner, "Reest. from old wit trees. Rock 11x14." A BCS tie card dated July 1, 1982 shows the corner as a P.K. Nail. A BCS tie card dated December, 2003 shows the corner as a Type "C" Monument. Common distance ties indicate that the monument found in 2003 was in the same, or nearly the same, position as the P.K. nail shown on the 1982 tie card. No excavation was performed at this corner as it falls in a state highway. The Type B monument found is believed to be the same monument as is referenced on the 2003 tie card. This position is known to have been held as marking the corner for many years and fits with local evidence, being at the intersection of the roads. The Type B monument was held as marking the corner.

This corner was originally established as a wood post in 1820.



*Kenneth E. Hedge*  
Kenneth E. Hedge, County Surveyor

*James S. Swift*  
James S. Swift, IN LS 20200054  
July 21, 2020

Jackson Township

Section 3 T17N, R2W	Section 2 T17N, R2W
Section 10 T17N, R2W	Section 11 T17N, R2W