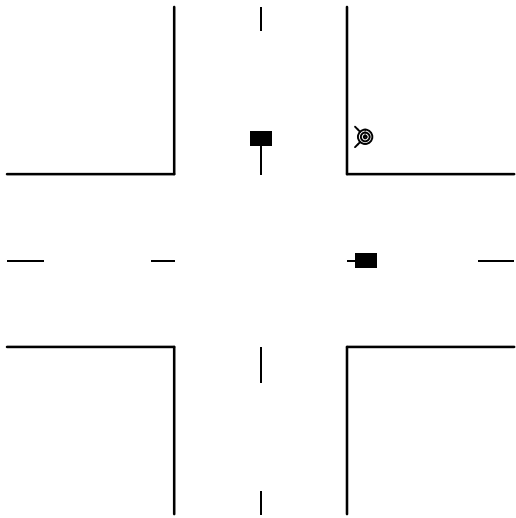


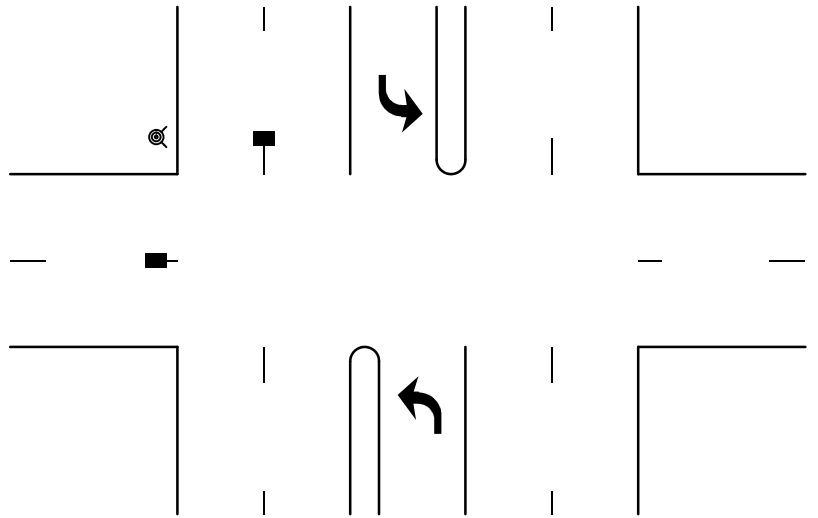
INDEX OF BOONE COUNTY STANDARDS
800 SERIES STANDARD DRAWINGS
TRAFFIC CONTROL DEVICES

Typical Blue RPM Locations.....	BC-800-001
Standard Barricade.....	BC-801-001
Typical Application For Work Beyond The Shoulder.....	BC-801-002
Typical Application For Shoulder Work With Minor Encroachment.....	BC-801-003
Typical Application For Lane Closure On A Two-Lane Road Using Flaggers.....	BC-801-004
Typical Application For Lane Closure On A Two-Lane Road With Low Traffic Volumes.....	BC-801-005
Typical Application For Temporary Road Closure.....	BC-801-006
Typical Application For Lane Closure On A Minor Street.....	BC-801-007
Typical Applicaiton Diagram For Additional Information.....	BC-801-008

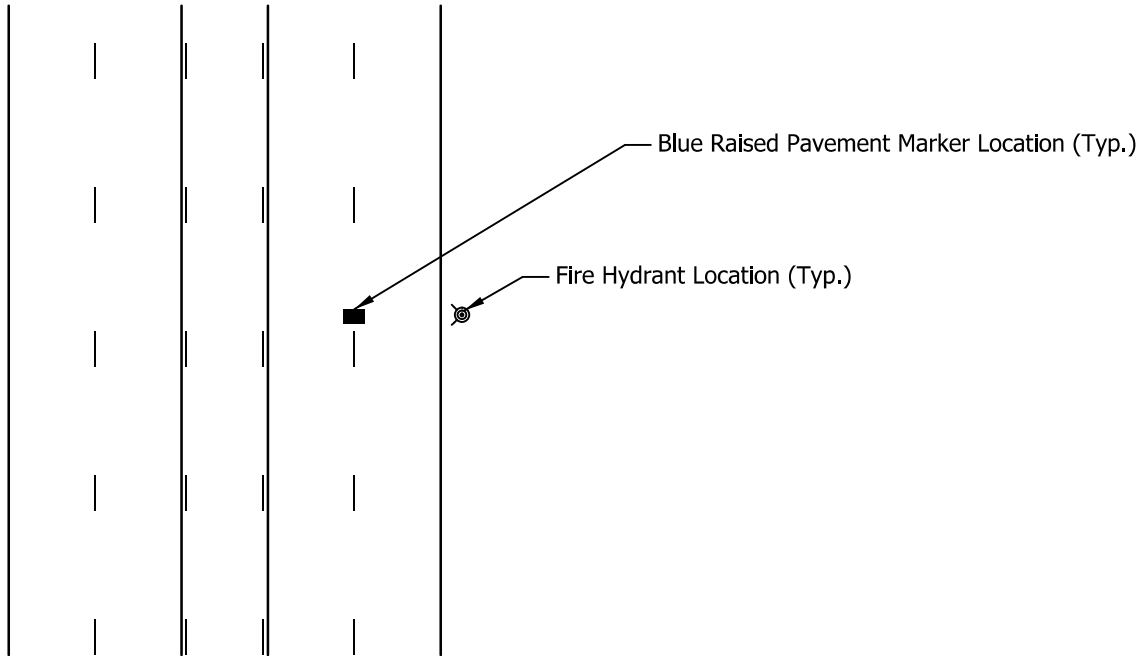
3/27/2019 7:24:10 AM I:\170004 - Boone County As-Needed Assistance\Standards Consultation\09Road\04 Design files\02 DGN\Plans\800s\800-01_Blue RPM.dgn



TWO-LANE STREET
AT INTERSECTION



MULTI-LANE STREET
AT INTERSECTION



MULTI-LANE STREET
WITH TURN LANE OR
MEDIAN

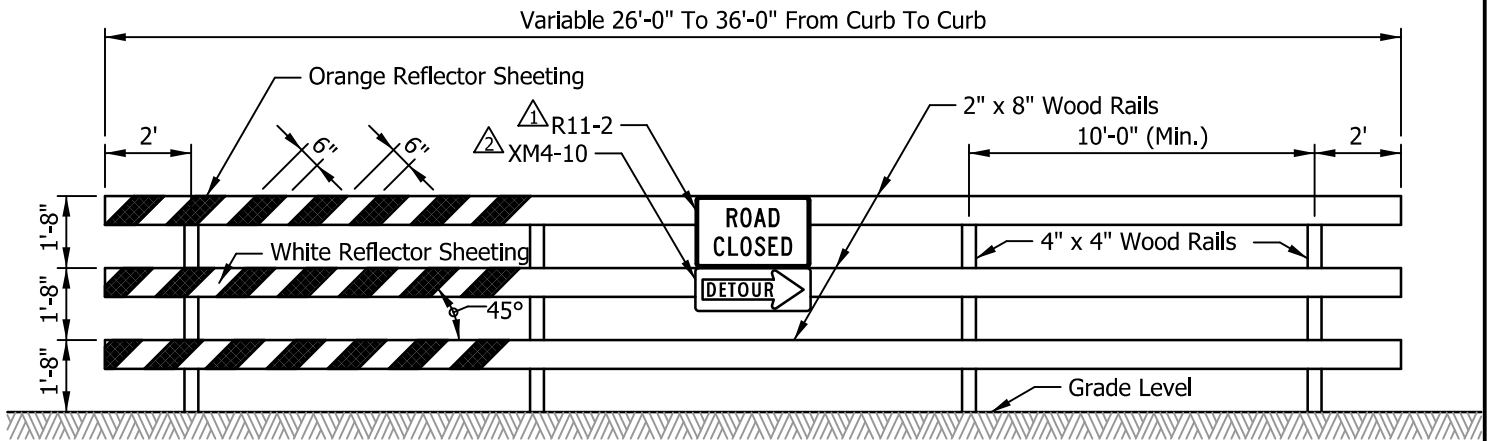
BOONE COUNTY HIGHWAY DEPARTMENT



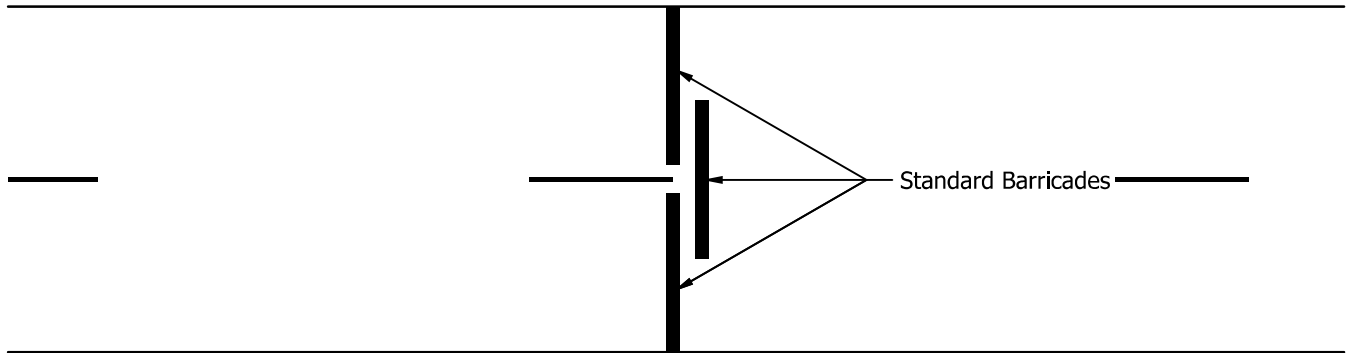
**RAISED PAVEMENT MARKER
(BLUE)**

STANDARD DRAWING
NO. BC-800-001
SHEET 1 OF 1
SCALE: NO SCALE

3/27/2019 7:24:11 AM I:\P\170004 - Boone County As-Needed Assistance\Standards Consultation\09Road\04 Design files\02 DGN\Plans\8005\801-001_Standard Barricade.dgn



ROAD CLOSURE DETAIL
ELEVATION VIEW



PLAN VIEW

NOTES:

- 1. The Legend Of The R11-2 May Be Modified To "BRIDGE CLOSED" As Indicated On The Plans Or As Directed By The County Engineer.
- 2. The Detour Arrow Sign Shall Be Used Only When A Detour Route Has Been Signed.
- 3. Barricades, Lights, Signs, And Supports Shall Meet NCHRP 350 Or Mash Crash Evaluation Criteria.
- 4. All Wood Posts And Support Members Shall Be Painted With Two Coats Of White Paint.
- 5. Location Of Barricades Shall Be In Accordance With The Plans.
- 6. Reflective Sheeting Shall Be In Accordance With INDOT Standard Specifications.
- 7. Refer To Section 801 Of The INDOT Standard Specifications And The Latest Edition Of The Indiana Manual Of Uniform Traffic Control Devices (MUTCD) For Any Additional Information.

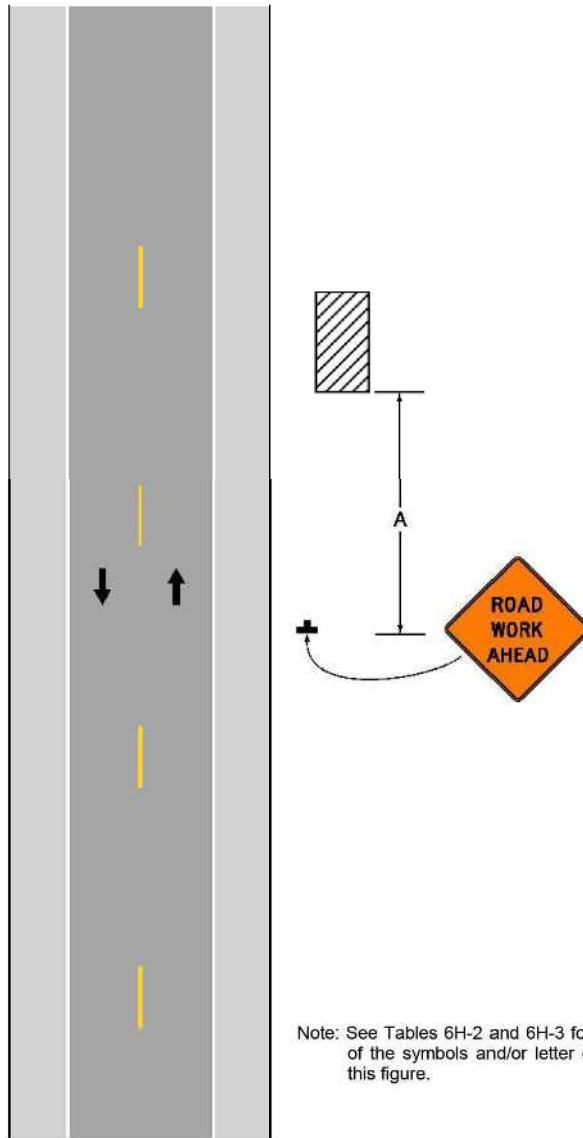
BOONE COUNTY HIGHWAY DEPARTMENT



STANDARD BARRICADE

STANDARD DRAWING
NO. BC-801-001
SHEET 1 OF 1
SCALE: NO SCALE

Figure 6H-1. Work Beyond the Shoulder (TA-1)



Note: See Tables 6H-2 and 6H-3 for the meaning of the symbols and/or letter codes used in this figure.

Typical Application 1

November 2011

Sect. 6H.01

NOTES:

1. Figure From 2011 Indiana Manual On Uniform Traffic Control Devices (MUTCD)
2. For Additional Information See 2011 IMUTCD and See STD Drawing - BC-801-008

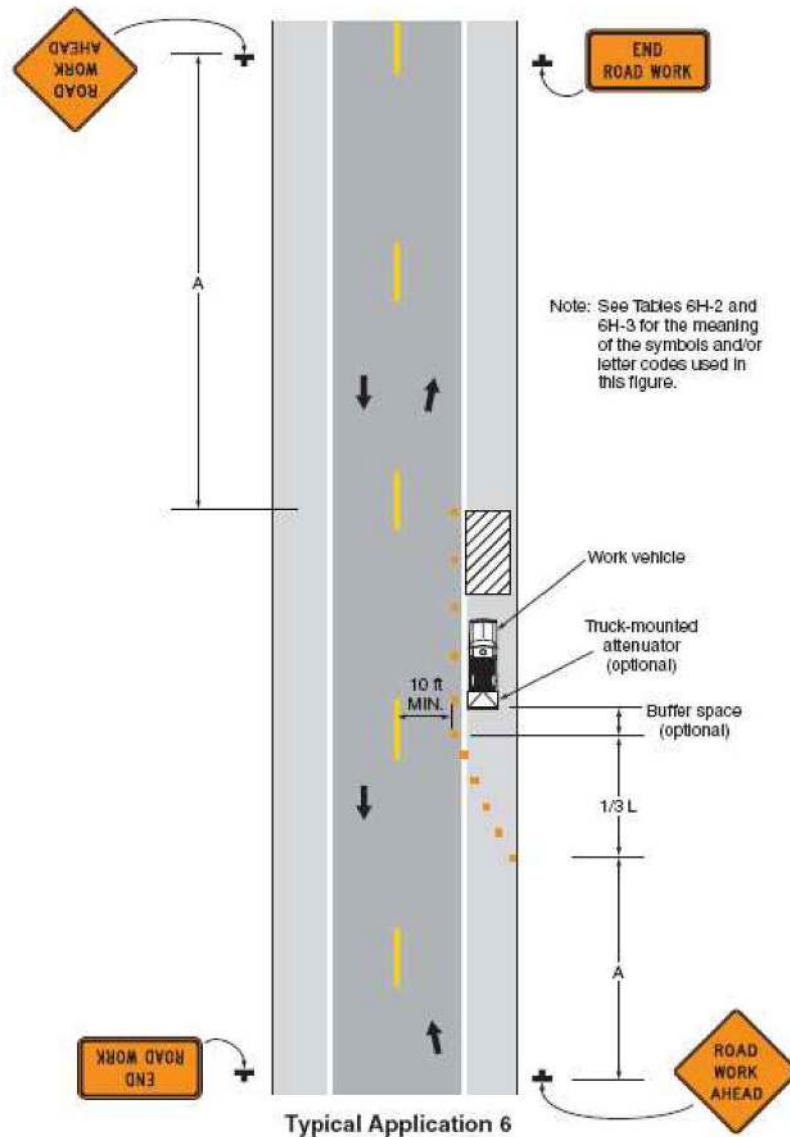
BOONE COUNTY HIGHWAY DEPARTMENT



**TYPICAL APPLICATION FOR
WORK BEYOND THE SHOULDER**

STANDARD DRAWING
NO. BC-801-002
SHEET 1 OF 1
SCALE: NO SCALE

Figure 6H-6. Shoulder Work with Minor Encroachment (TA-6)



November 2011

Sect. 6H.01

NOTES:

1. Figure From 2011 Indiana Manual On Uniform Traffic Control Devices (MUTCD)
2. For Additional Information See 2011 IMUTCD and See STD Drawing - BC-801-008

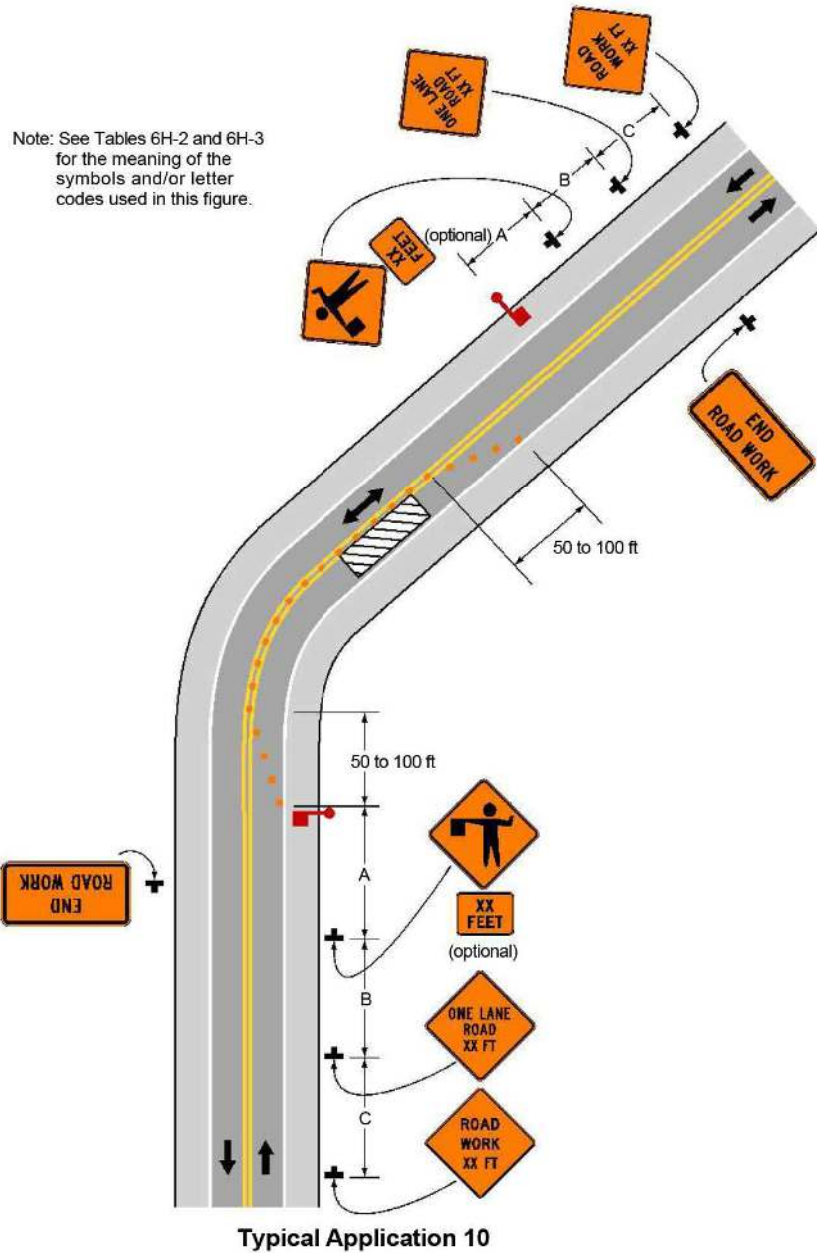
BOONE COUNTY HIGHWAY DEPARTMENT

**TYPICAL APPLICATION FOR
SHOULDER WORK WITH MINOR ENCROACHMENT**

STANDARD DRAWING
NO. BC-801-003
SHEET 1 OF 1
SCALE: NO SCALE



Figure 6H-10. Lane Closure on a Two-Lane Road Using Flaggers (TA-10)



November 2011

Sect. 611.01

NOTES:

1. Figure From 2011 Indiana Manual On Uniform Traffic Control Devices (MUTCD)
2. For Additional Information See 2011 IMUTCD and See STD Drawing - BC-801-008

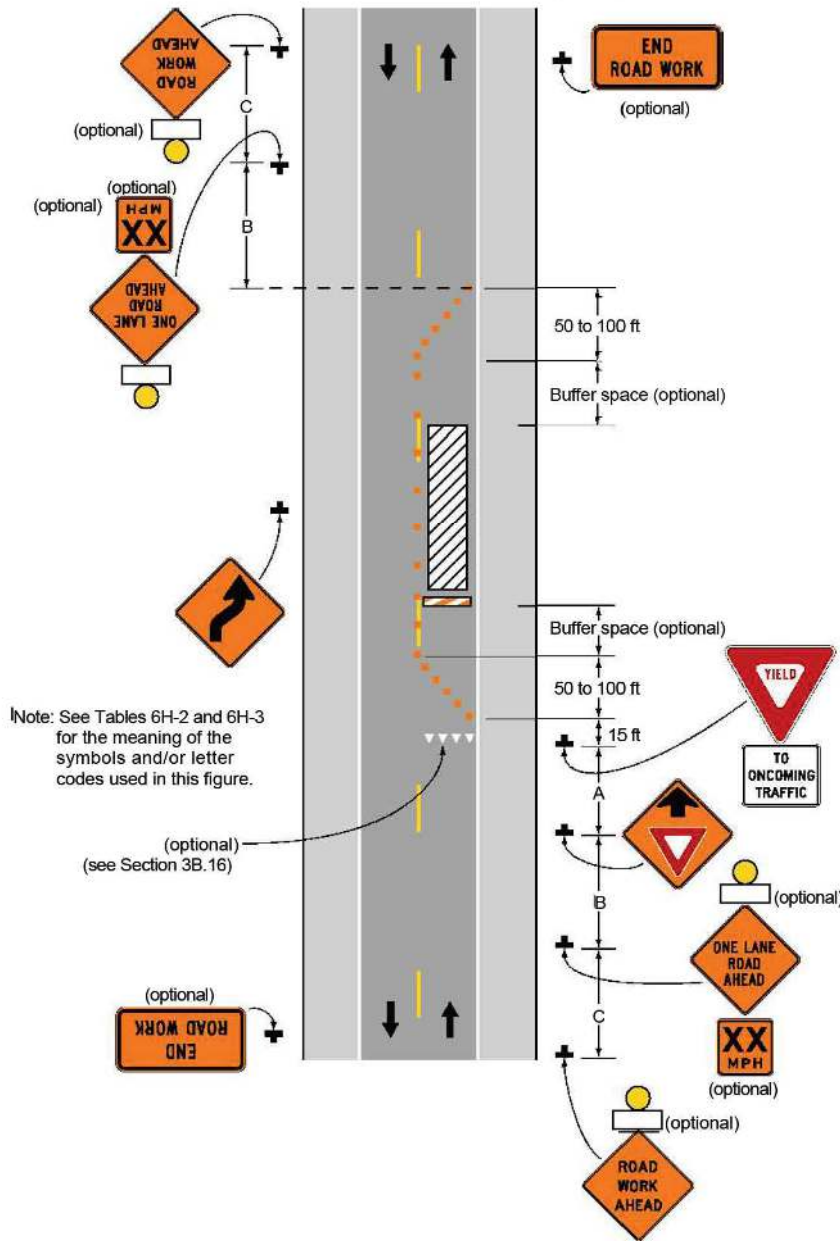
BOONE COUNTY HIGHWAY DEPARTMENT

**TYPICAL APPLICATION FOR
LANE CLOSURE ON A TWO-LANE ROAD USING FLAGGERS**

STANDARD DRAWING
NO. BC-801-004
SHEET 1 OF 1
SCALE: NO SCALE



Figure 6H-11. Lane Closure on a Two-Lane Road with Low Traffic Volumes (TA-11)



Typical Application 11

November 2011

Sect. 611.01

NOTES:

1. Figure From 2011 Indiana Manual On Uniform Traffic Control Devices (MUTCD)
2. For Additional Information See 2011 IMUTCD and See STD Drawing - BC-801-008

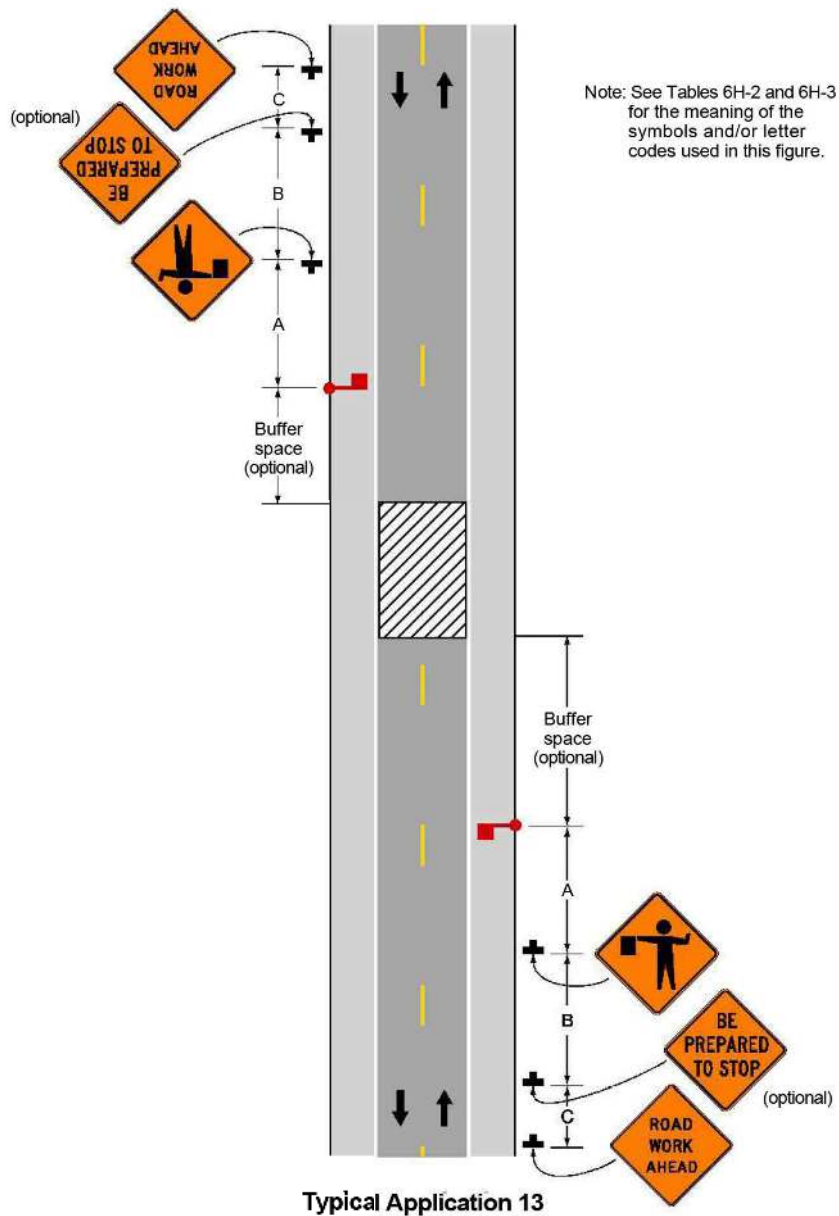
BOONE COUNTY HIGHWAY DEPARTMENT

**TYPICAL APPLICATION FOR
LANE CLOSURE ON A TWO-LANE ROAD
WITH LOW TRAFFIC VOLUME**

STANDARD DRAWING
NO. BC-801-005
SHEET 1 OF 1
SCALE: NO SCALE



Figure 6H-13. Temporary Road Closure (TA-13)



Typical Application 13

November 2011

Sect. 611.01

NOTES:

1. Figure From 2011 Indiana Manual On Uniform Traffic Control Devices (MUTCD)
2. For Additional Information See 2011 IMUTCD and See STD Drawing - BC-801-008

BOONE COUNTY HIGHWAY DEPARTMENT

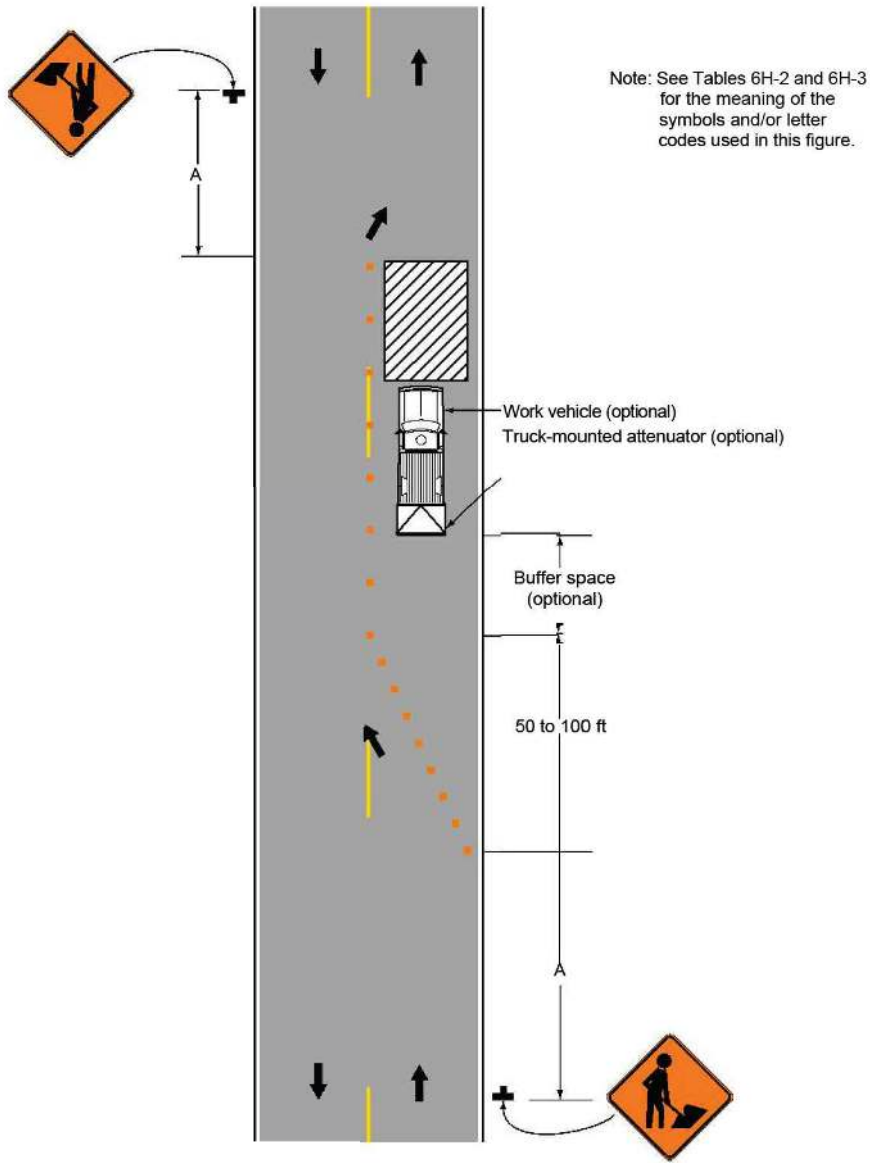


TYPICAL APPLICATION FOR TEMPORARY ROAD CLOSURE

STANDARD DRAWING
NO. BC-801-006
SHEET 1 OF 1
SCALE: NO SCALE

3/27/2019 7:24:14 AM I:\170004 - Boone County As-Needed Assistance\Standards Consolidation\09Road\04 Design files\02 DGN\Plans\8005\801-006_Temporary Road Closure.dgn

Figure 6H-18. Lane Closure on a Minor Street (TA-18)



Typical Application 18

November 2011

Sect. 6H.01

NOTES:

1. Figure From 2011 Indiana Manual On Uniform Traffic Control Devices (MUTCD)
2. For Additional Information See 2011 IMUTCD and See STD Drawing - BC-801-008

BOONE COUNTY HIGHWAY DEPARTMENT

**TYPICAL APPLICAITON FOR
LANE CLOSURE ON A MINOR STREET**

STANDARD DRAWING
NO. BC-801-007
SHEET 1 OF 1
SCALE: NO SCALE



Table 6H-2. Meaning of Symbols on Typical Application Diagrams


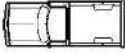





















	Arrow board		Shadow vehicle
	Arrow board support or trailer (shown facing down)		Sign (shown facing left)
	Changeable message sign or support trailer		Surveyor
	Channelizing device		Temporary barrier
	Crash cushion		Temporary barrier with warning light
	Direction of temporary traffic detour		Traffic or pedestrian signal
	Direction of traffic		Truck-mounted attenuator
	Flagger		Type 3 barricade
	High-level warning device (Flag tree)		Warning light
	Longitudinal channelizing device		Work space
	Luminaire		Work vehicle
	Pavement markings that should be removed for a long-term project		

Table 6H-3. Meaning of Letter Codes on Typical Application Diagrams

Road Type	Distance Between Signs**		
	A	B	C
Urban (low speed)*	100 feet	100 feet	100 feet
Urban (high speed)*	350 feet	350 feet	350 feet
Rural	500 feet	500 feet	500 feet
Expressway / Freeway	1,000 feet	1,500 feet	2,640 feet

* Speed category to be determined by highway agency

** The column headings A, B, and C are the dimensions shown in Figures 6H-1 through 6H-46. The A dimension is the distance from the transition or point of restriction to the first sign. The B dimension is the distance between the first and second signs. The C dimension is the distance between the second and third signs. (The "first sign" is the sign in a three-sign series that is closest to the TTC zone. The "third sign" is the sign that is furthest upstream from the TTC zone.)

Table 6H-4. Formulas for Determining Taper Length

Speed (S)	Taper Length (L) in feet
40 mph or less	$L = \frac{WS^2}{60}$
45 mph or more	$L = WS$

Where: L = taper length in feet
 W = width of offset in feet
 S = posted speed limit, or off-peak 85th-percentile speed prior to work starting, or the anticipated operating speed in mph

November 2011

Sect. 6H.01

NOTES:

1. Figure From 2011 Indiana Manual On Uniform Traffic Control Devices (MUTCD)

BOONE COUNTY HIGHWAY DEPARTMENT

**ADDITIONAL INFORMATION FOR
TYPICAL APPLICATION DIAGRAMS**

STANDARD DRAWING
NO. BC-801-008
SHEET 1 OF 1
SCALE: NO SCALE

