

# SECTION CORNER RECORD

NE 650-1100

## BOONE COUNTY SURVEYOR'S OFFICE

State Plane grid coordinates NAD83 (CORS96):

North: 1781493.14 East: 3182688.31 (U.S. survey feet)

Type of monument: Harrison, 4" disk 'Section Corner'

Depth: six inches below adjacent gravel road surface

Indiana tie card references:

IN02\_T20NR2E35\_44

IN02\_T20NR2E36\_36

### CORNER WITNESS DETAIL

SCALE 1" = 40'



A - Boone County witness mark, flush, 41.75'

B - Mag nail set in W. side power pole, 2' a.g., 67.31'

C - Mag nail set in W. side power pole, 2' a.g., 14.89'

Boone County witness mark is a 3/8" diameter x 2' long rebar bearing a metal cap stamped "Boone County Witness Point."

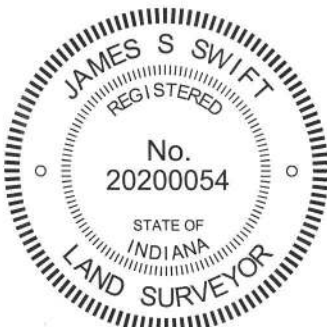


The harrison monument was set in place of a stone found.

A BCS record of February 21-22, 1872 states "found rock at corner (saw one stump.)" A BCS tie card dated August 11, 1974 states "no stone found."

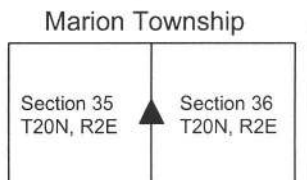
This corner was excavated on July 17, 2013. Prior to excavation a rebar with a red cap (markings illegible) was found at 3 inches deep in the gravel road. No ties remain from the 1974 tie card and the source of the capped rebar is not known. Excavation revealed a stone found at 4 inches deep. The stone was removed, measured and found to be 21 inches tall by 11 inches N-S by 7 inches E-W. No specific marks were found on the stone, though it had a clear high point and fit the characteristics of other corner stones found marking corners throughout the county, being vertical and embedded in the clay layer below the road. The stone was accepted as being the best available evidence of the corner. The harrison monument was set in place of the high point of the stone. The rebar, removed during excavation, had been 0.7 of a foot south of the top, high point of the stone.

This corner was originally established as a wood post in 1821.



*Kenneth E. Hedge*  
 Kenneth E. Hedge, County Surveyor

*James S. Swift*  
 James S. Swift, IN LS 20200054  
 February 5, 2015



PHOTOGRAPHIC DOCUMENTATION

Date of photography: July 17, 2013

View of the stone as first exposed.



The stone removed from the road.



View of the stone from the south, looking north along County Road 1100 East.



View of the stone from the west, looking east along County Road 1100 East.



For details and documentation, refer to related sheet "Section Corner Record."

# SECTION CORNER RECORD

# NE 700-1100

## BOONE COUNTY SURVEYOR'S OFFICE

State Plane grid coordinates NAD83 (CORS96):  
 North: 1784130.04 East: 3182640.01 (U.S. survey feet)

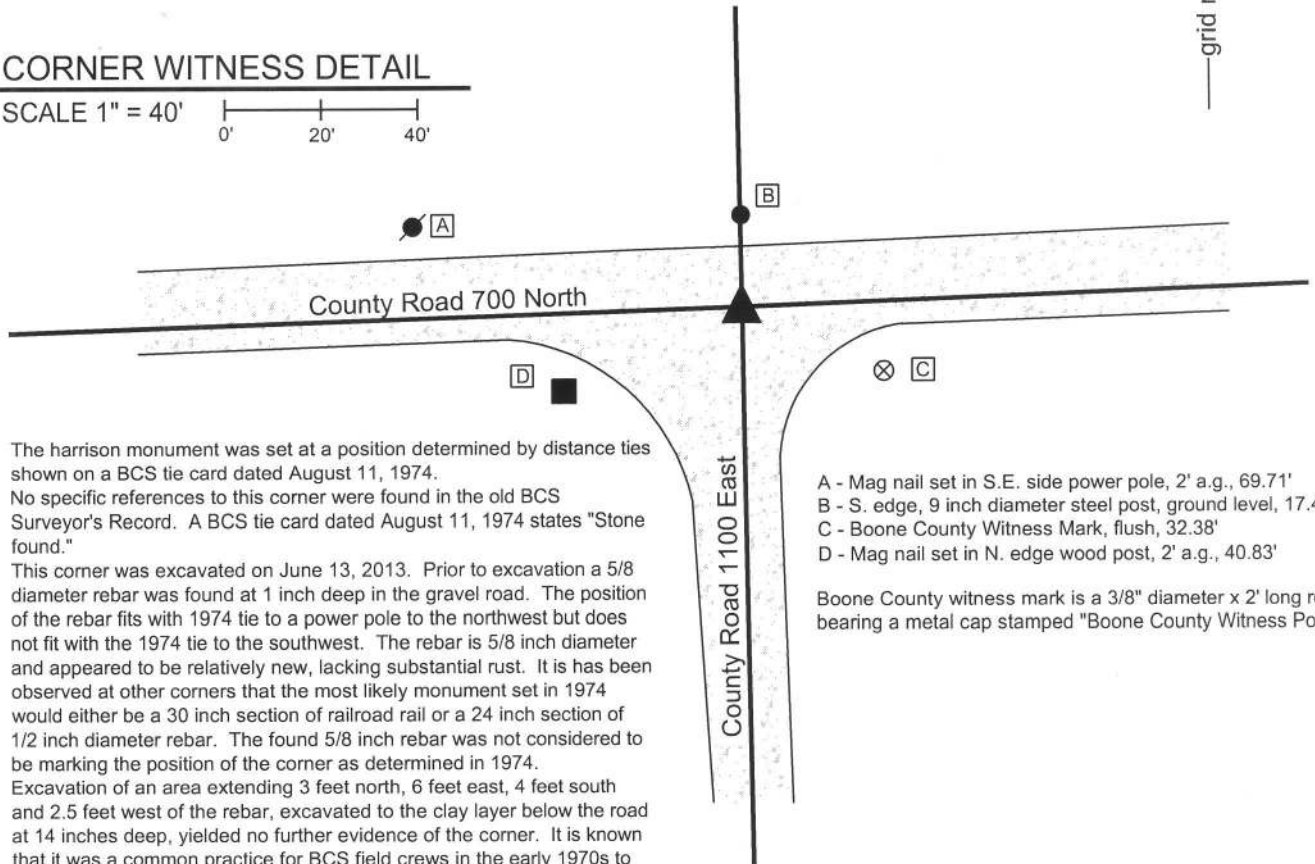
Type of monument: Harrison, 4" disk 'Section Corner'  
 Depth: six inches below adjacent gravel road surface

Indiana tie card references:  
 IN02\_T20NR2E26\_80 IN02\_T20NR2E25\_72  
 IN02\_T20NR2E35\_08 IN02\_T20NR2E36\_00



### CORNER WITNESS DETAIL

SCALE 1" = 40'



The harrison monument was set at a position determined by distance ties shown on a BCS tie card dated August 11, 1974. No specific references to this corner were found in the old BCS Surveyor's Record. A BCS tie card dated August 11, 1974 states "Stone found."

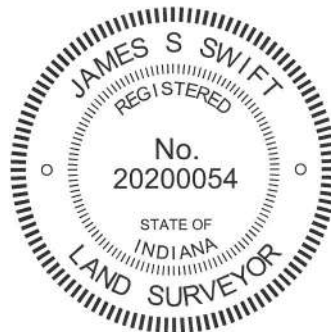
This corner was excavated on June 13, 2013. Prior to excavation a 5/8 diameter rebar was found at 1 inch deep in the gravel road. The position of the rebar fits with 1974 tie to a power pole to the northwest but does not fit with the 1974 tie to the southwest. The rebar is 5/8 inch diameter and appeared to be relatively new, lacking substantial rust. It is has been observed at other corners that the most likely monument set in 1974 would either be a 30 inch section of railroad rail or a 24 inch section of 1/2 inch diameter rebar. The found 5/8 inch rebar was not considered to be marking the position of the corner as determined in 1974.

Excavation of an area extending 3 feet north, 6 feet east, 4 feet south and 2.5 feet west of the rebar, excavated to the clay layer below the road at 14 inches deep, yielded no further evidence of the corner. It is known that it was a common practice for BCS field crews in the early 1970s to remove stones, if found, and replace them with either a railroad rail of a 1/2 inch diameter rebar. It is reasonable to expect that the stone found in 1974 was removed and also reasonable to expect that the monument set in its place may have been removed by a road grader at some point in the intervening 39 years. The position of the corner determined in 1974 was reconstructed using the two distance remaining distance ties, holding the southeast edge of the power pole and the northeast corner of the wood post, as graphically demonstrated on the 1974 tie card. A harrison monument was set at this position. The 5/8 inch diameter rebar, removed during excavation, had been 1 foot north and 2 feet east of this position.

This corner was originally established as a wood post in 1821.

- A - Mag nail set in S.E. side power pole, 2' a.g., 69.71'
- B - S. edge, 9 inch diameter steel post, ground level, 17.43'
- C - Boone County Witness Mark, flush, 32.38'
- D - Mag nail set in N. edge wood post, 2' a.g., 40.83'

Boone County witness mark is a 3/8" diameter x 2' long rebar bearing a metal cap stamped "Boone County Witness Point."



Marion Township

Section 26 T20N, R2E	Section 25 T20N, R2E
Section 35 T20N, R2E	Section 36 T20N, R2E

*Kenneth E. Hedge*  
 Kenneth E. Hedge, County Surveyor

*James S. Swift*  
 James S. Swift, IN LS 20200054

February 5, 2015

# SECTION CORNER RECORD

NE 700-1150

## BOONE COUNTY SURVEYOR'S OFFICE

State Plane grid coordinates NAD83 (CORS96):

North: 1784236.96 East: 3185302.95 (U.S. survey feet)

Type of monument: Harrison, 4" disk 'Section Corner'

Depth: four inches below the adjacent gravel road surface

Indiana tie card references:

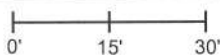
IN02\_T20NR2E25\_76

IN02\_T20NR2E36\_04



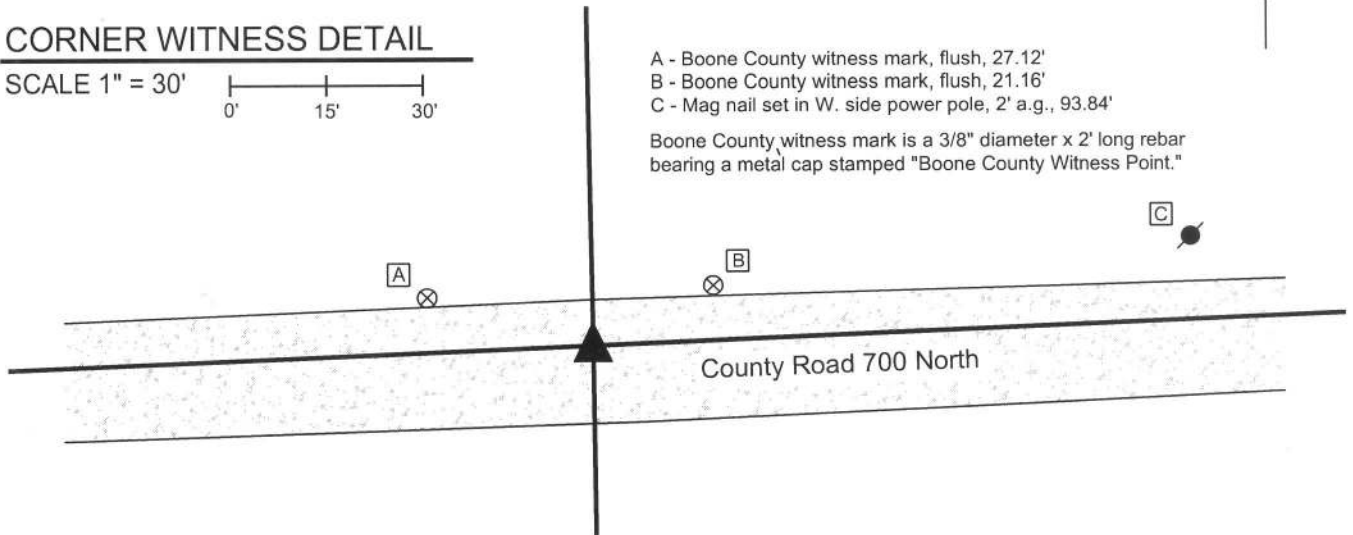
### CORNER WITNESS DETAIL

SCALE 1" = 30'



- A - Boone County witness mark, flush, 27.12'
- B - Boone County witness mark, flush, 21.16'
- C - Mag nail set in W. side power pole, 2' a.g., 93.84'

Boone County witness mark is a 3/8" diameter x 2' long rebar bearing a metal cap stamped "Boone County Witness Point."



The harrison monument was set in place of a stone found.

No specific descriptions of this corner were found in the old BCS Surveyor's Record, though the corner is mentioned as the terminal point for measurements in records of 1851, 1872 and 1891, indicating that some object was present from which to measure. The 1876 county atlas shows a road along the E-W section line, hence the measurement reference in the 1891 record, at least, would indicate that the object was present in the road. A BCS tie card dated August 11, 1974 states "no stone found" and shows the corner as being at the midpoint between posts on each side of County Road 700 North. A BCS tie card dated January 18, 1994 shows the corner as a metal fence post in the center of County Road 700 North with no documentation of source.

This corner was excavated on September 18, 2013. Prior to excavation a section of steel "T-post" was found flush with the surface of the gravel road. Excavation revealed a stone found at 5 inches deep, west of the steel post. The stone was leaning northeast as originally found, appearing to have been hit by a road grader. The base of the stone was fully embedded in the clay layer below the road. Though leaning, the stone did not appear to be disturbed from its original position at the base. Stood up in its natural orientation the stone was vertical and the top of the stone was flush with the surface of the road. The road bed in this area was found to be 3 inches of gravel with a dense layer of clay below. Hence the stone, as stood up, was embedded in the clay layer, protruding 3 inches into the road bed. This is typical of many corner stones found throughout the county. The stone was removed from the road, measured and found to be 15 inches tall by 8 inches 5 inches N-S by 8 inches E-W. As stood up, the stone had a distinct high point. An etched mark was vaguely visible but not possible to confirm due to the apparent damage to the top of the stone by being hit by the road grader. The stone was accepted as the best evidence of the original position of the corner. A harrison monument was set in place of the stone at the position of the distinct high point, as stood up. The steel post was found to be 16 inches long, painted red and did not appear to be substantially aged, having minimal rust and deterioration. The post had been 2.0 feet east and 0.6 foot south of the stone and was removed during excavation.

This corner was originally established as a wood post in 1821.



*Kenneth E. Hedge*  
Kenneth E. Hedge, County Surveyor

*James S. Swift*  
James S. Swift, IN LS 20200054

February 5, 2015

Marion Township

Section 25  
T20N, R2E

Section 36  
T20N, R2E

PHOTOGRAPHIC DOCUMENTATION

Date of photography: September 18, 2014

View of the stone as first exposed.



View of the stone from the north.



View from the east, looking across the stone and east along County Road 700 North.



View of the stone from the west.



View from the east, close-up.



For details and documentation, refer to related sheet "Section Corner Record."