

SECTION CORNER RECORD

NE 050-600

BOONE COUNTY SURVEYOR'S OFFICE

State Plane grid coordinates NAD83 (2011):

Corner 1: North: 1748701.63 East: 3156410.42 (U.S. survey feet)

Corner 2: North: 1748691.17 East: 3156410.47 (U.S. survey feet)

Type of monument: Harrison, 4" disk 'Section Corner'

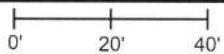
Depth: One inch below adjacent road surface

Indiana tie card references:

IN02_T19NR1E36_44 IN02_T19NR2E31_36

CORNER WITNESS DETAIL

SCALE 1" = 40'



- A - Boone County witness mark, flush, 29.5' to Corner 1, 39.6' to Corner 2
- B - Boone County witness mark, flush, 26.9' to Corner 1, 18.4' to Corner 2
- C - Boone County witness mark, flush, 28.4' to Corner 1, 18.9' to Corner 2

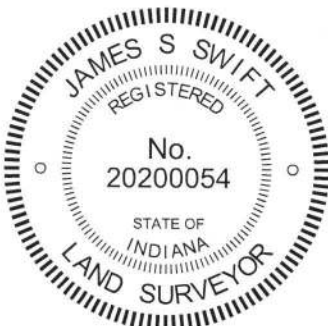
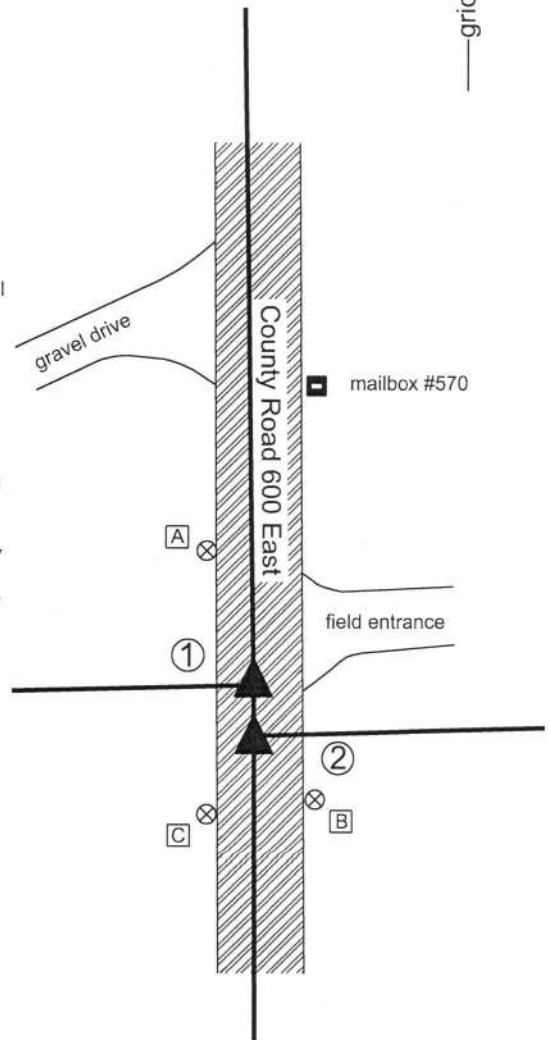
The Harrison monument at Corner 2 was set over a stone and in place of a found Mag nail and Harrison monument. The monument Corner 1 was set in place of a found Mag nail and Harrison monument.

No specific descriptions of Corner 1 were found in the BCS Surveyor's Record beyond the original establishment of the corner as a wood post in 1819. A BCS record of May 22, 1855 states, with respect to Corner 2, "A Stone marked 1/4 S 31." BCS tie cards dated July 28, 2005 show both corners as Harrison monuments with no documentation of source.

Both corners were excavated on May 17, 2018. Prior to excavation, Mag nails were found at the surface of the road. The monuments referenced in the 2005 tie card were known to be below the Mag nails. Excavation at Corner 2 revealed the Harrison monument at 7 inches deep, directly below the Mag Nail. Further excavation revealed a stone found at 17 inches deep, below the Harrison. The stone was embedded in the clay layer below the road bed, with the top of the stone at the bottom of the road bed. With the top 4 inches of the stone exposed, it measured 11 inches N-S by 11 inches E-W. Various markings were visible on the top of the stone, mostly deep scratches which appeared to have been made by a road grader. The scratches were substantial enough that it was not possible to identify whether the mark "1/4 S 31" was present. The Harrison monument had been situated near the northwest edge of the top of the stone. Mag spikes were found driven into the clay at the NE, NW, SE and SW edges of the stone. The stone was held as marking the corner and a new Harrison monument was set in place of the previous monument, slightly northwest of the top, center of the stone.

Excavation at Corner 1 revealed the known Harrison monument at 7 inches below the found Mag nail, but no further evidence of the corner. It is noted that an average closing distance computed with respect to the original federal survey notes and the corners 1/2 mile to the north and south would place these corners approximately 13.9 feet apart. The found Harrison monuments are closer to 10.5 feet apart. The area around Corner 1 was excavated to 1.5 feet south, 4 feet north and 2.5 feet east and west of the existing monuments to include an area which may contain evidence at the computed closing distance. No further evidence of Corner 1 was found and the position of the found Mag nail and Harrison monument were held as marking the corner. These monuments were replaced with a new Harrison monument.

- ① East Quarter Corner Section 36 T 19 N, R 1 E
- ② West Quarter Corner Section 31 T 19 N, R 2 E



Kenneth E. Hedge
Kenneth E. Hedge, County Surveyor

James S. Swift
James S. Swift, IN LS 20200054
June 12, 2018

Center Township	Union Township
Section 36 T19N, R1E	Section 31 T19N, R2E

SECTION CORNER RECORD

BOONE COUNTY SURVEYOR'S OFFICE

NE 100-500

State Plane grid coordinates NAD83 (NSRS 2007):

North: 1751187.06 East: 3151049.35 (U.S. survey feet)

Type of monument: Harrison, 4" disk 'Section Corner'

Depth: One inch below adjacent road surface

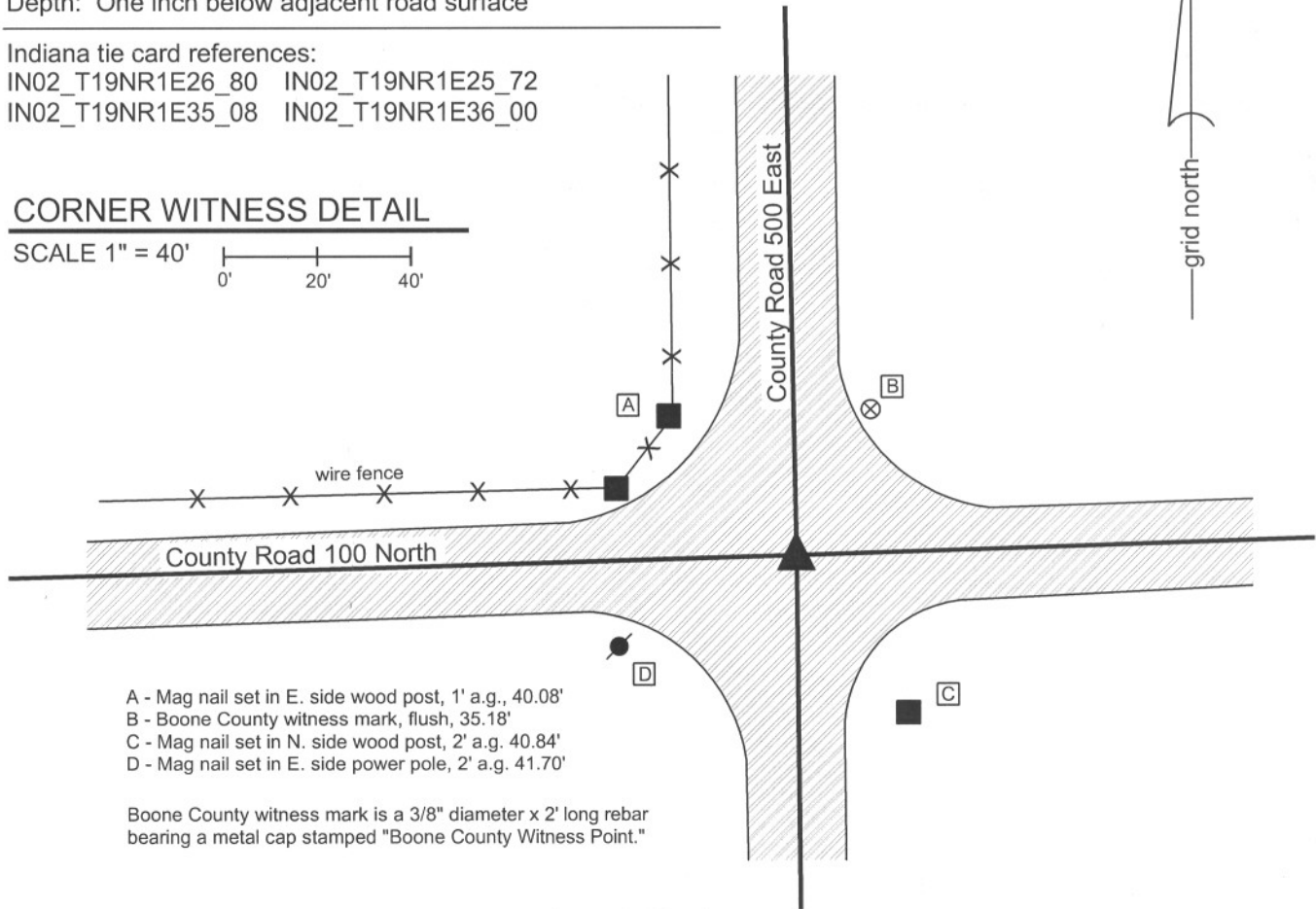
Indiana tie card references:

IN02_T19NR1E26_80 IN02_T19NR1E25_72

IN02_T19NR1E35_08 IN02_T19NR1E36_00

CORNER WITNESS DETAIL

SCALE 1" = 40'



- A - Mag nail set in E. side wood post, 1' a.g., 40.08'
- B - Boone County witness mark, flush, 35.18'
- C - Mag nail set in N. side wood post, 2' a.g. 40.84'
- D - Mag nail set in E. side power pole, 2' a.g. 41.70'

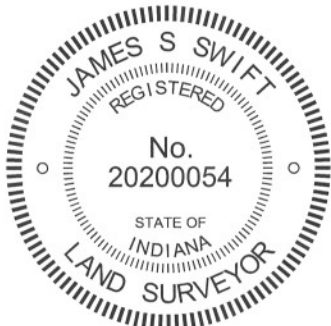
Boone County witness mark is a 3/8" diameter x 2' long rebar bearing a metal cap stamped "Boone County Witness Point."

The harrison monument was set in place of a vertical section of railroad rail found.

A BCS record of September 17, 1867 states "Reestablished drove a stake." A BCS record of August 4-5, 1868 shows the corner as the terminal point for measurements with no description of monumentation. A BCS tie card dated July, 1968 shows the corner but does not mention a monument. The field notes associated with this document state "no stone." A BCS tie card dated May 29, 1991 shows the corner as "angle iron fd. (rail)." A BCS tie card dated August 4, 2005 shows the corner as a harrison monument.

This corner was excavated on July 12, 2011. Prior to excavation a harrison monument was found at the surface. Excavation revealed a section of railroad rail on end found at 6 inches deep. The center of the rail was 0.3' south and 0.1' west of the harrison. No evidence was found directly below the harrison. Further excavation revealed a wood stake found at 10 inches deep, 2.1' west and 0.5' south of the rail. The stake was entirely in the fill material of the road and appears to be much newer than a wood stake from 1867. No other evidence was found in an area of excavation extending 2.5' East, 2.5' West, 4' South and 2' North of the original found harrison monument. Excavation was extended to the clay layer below the road, at 3 feet deep. The found railroad rail was held as the corner. It is most likely that the rail was established in association with the 1968 tie card. It is noted the lay of the surrounding ground indicates that this corner was likely low and occasionally wet during the wagon road era.

This corner was originally established as a wood stake in June, 1822.



Kenneth E. Hedge
 Kenneth E. Hedge, County Surveyor

James S. Swift
 James S. Swift, IN LS 20200054

March 1, 2012

Center Township

Section 26 T19N, R1E	Section 25 T19N, R1E
Section 35 T19N, R1E	Section 36 T19N, R1E

SECTION CORNER RECORD

NE 100-550

BOONE COUNTY SURVEYOR'S OFFICE

State Plane grid coordinates NAD83 (NSRS 2007):

North: 1751272.40 East: 3153707.72 (U.S. survey feet)

Type of monument: Harrison, 4" disk 'Section Corner'

Depth: One inch below adjacent road surface

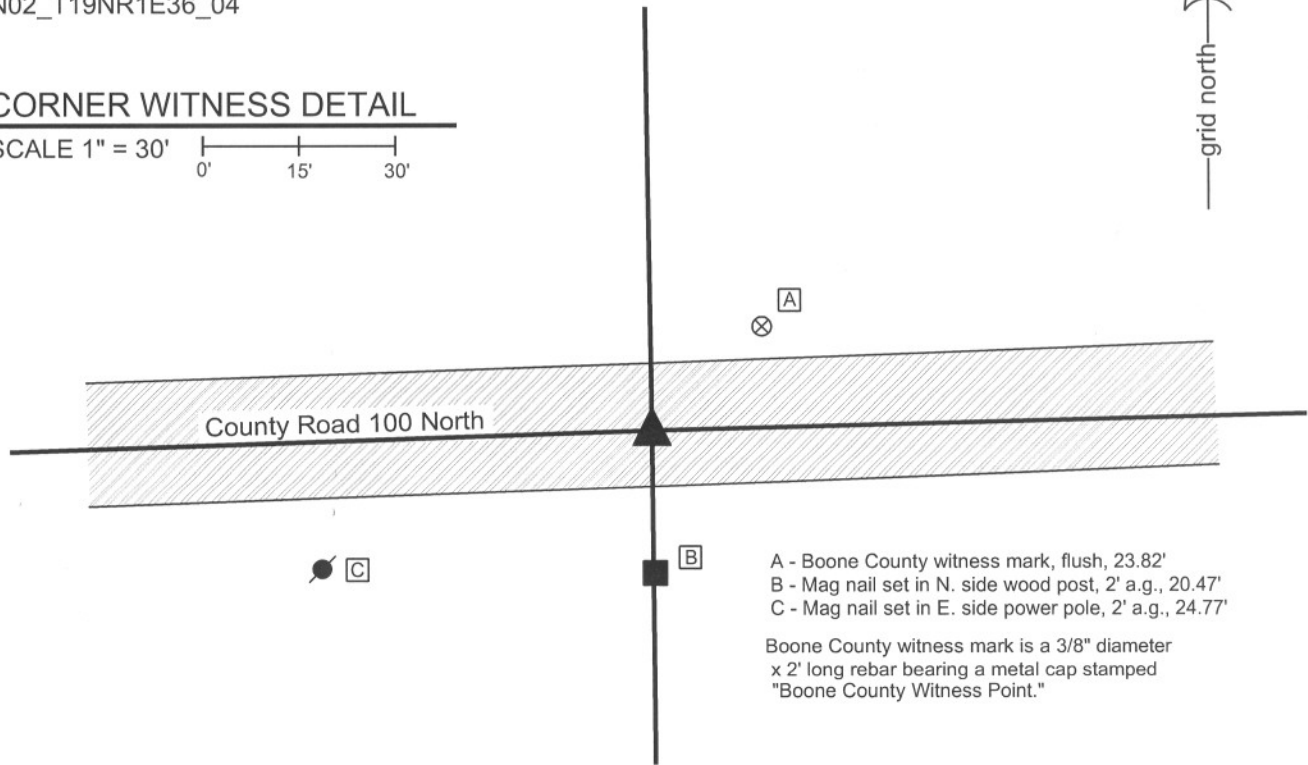
Indiana tie card references:

IN02_T19NR1E25_76

IN02_T19NR1E36_04

CORNER WITNESS DETAIL

SCALE 1" = 30'



- A - Boone County witness mark, flush, 23.82'
- B - Mag nail set in N. side wood post, 2' a.g., 20.47'
- C - Mag nail set in E. side power pole, 2' a.g., 24.77'

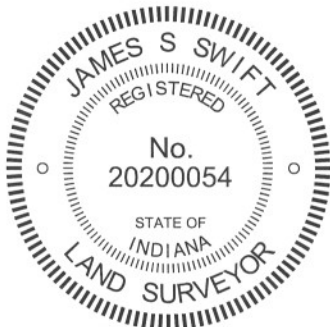
Boone County witness mark is a 3/8" diameter x 2' long rebar bearing a metal cap stamped "Boone County Witness Point."

The harrison monument was set over a stone found.

A BCS record of September, 1867 states "Reestablished. Set Rock 18.14.9 in + on top from which...." A BCS tie card dated July 1968 states "no stone." A BCS tie card dated June 3, 1974 states "no stone." A BCS tie card dated July 22, 2005 shows the corner as a steel rail with no documentation of source.

This corner was excavated on September 29, 2011. Prior to excavation the top of a vertical section of railroad rail was visible at 1 inch deep in a hole in the asphalt. It is likely that this section of rail was established in association with either the 1968 or 1974 tie cards. Excavation revealed a small stone found at 12 inches deep, in the fill material near the bottom of the road bed. Another, larger stone was found at 17 inches deep, directly below the small stone. With the top 11 inches of the larger stone exposed, it measures 14 inches E-W by 7 inches north south. An etched + is clearly visible on top at the center of the top of the stone. The stone is situated vertically and the south side is flat and vertical. With 11 inches exposed, the stone remained entirely stable in the clay. The top of the stone was found to protrude approximately 2 inches out of the clay layer below the road into the bottom of the road bed. The stone was accepted as being the stone described in the 1867 record. The stone was left in place and a harrison monument was set directly above the etched "+" on the top of the stone. The section of railroad rail, removed during excavation, had been 1.5 feet north and 0.2 foot west of the stone.

This corner was originally established as a wood post in June, 1822.



Kenneth E. Hedge
Kenneth E. Hedge, County Surveyor

James S. Swift
James S. Swift, IN LS 20200054
March 1, 2012

Center Twp

Section 25
T19N, R1E

Section 36
T19N, R1E

PHOTOGRAPHIC DOCUMENTATION

Date of photography: September 29, 2011

View of the stone as first exposed.



View of the stone more fully exposed.



View of the stone exposed, from a different perspective showing the flat south side of the stone.



The stone and the post on the south side of road.



View of the stone washed, showing etched "+".



For details and documentation, refer to related sheet "Section Corner Record."

SECTION CORNER RECORD

NE 100-600

BOONE COUNTY SURVEYOR'S OFFICE

State Plane grid coordinates NAD83 (2011):

Corner 1: North: 1751369.50 East: 3156369.35 (U.S. survey feet)

Corner 2: North: 1751341.82 East: 3156369.75 (U.S. survey feet)

Type of monument: Harrison, 4" disk 'Section Corner'

Depth: Flush with adjacent road surface

Indiana tie card references:

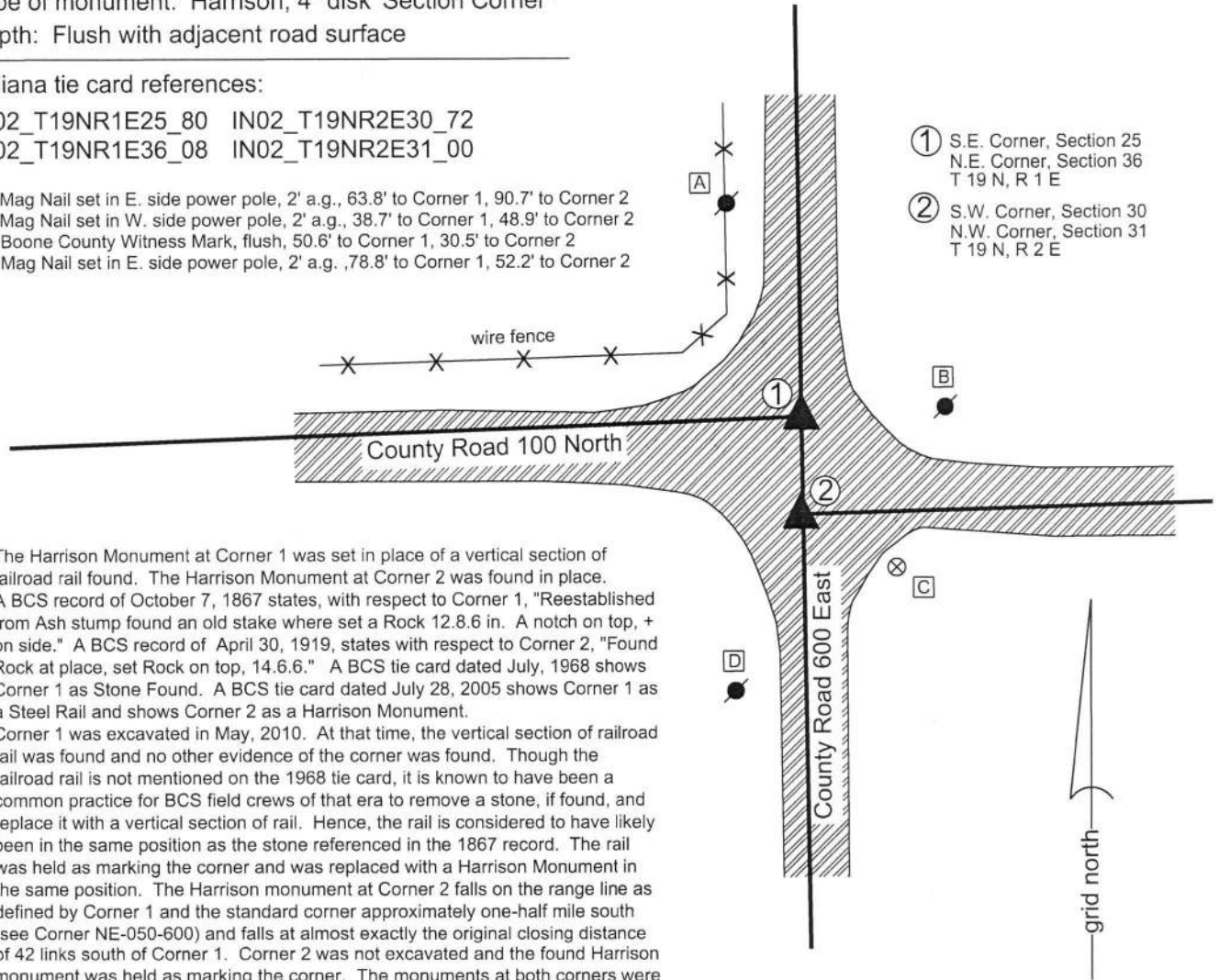
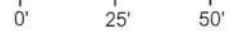
IN02_T19NR1E25_80 IN02_T19NR2E30_72

IN02_T19NR1E36_08 IN02_T19NR2E31_00

- A - Mag Nail set in E. side power pole, 2' a.g., 63.8' to Corner 1, 90.7' to Corner 2
- B - Mag Nail set in W. side power pole, 2' a.g., 38.7' to Corner 1, 48.9' to Corner 2
- C - Boone County Witness Mark, flush, 50.6' to Corner 1, 30.5' to Corner 2
- D - Mag Nail set in E. side power pole, 2' a.g., 78.8' to Corner 1, 52.2' to Corner 2

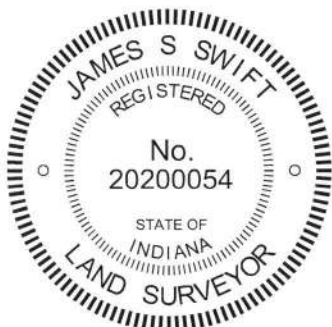
CORNER WITNESS DETAIL

SCALE 1" = 50'



- ① S.E. Corner, Section 25
N.E. Corner, Section 36
T 19 N, R 1 E
- ② S.W. Corner, Section 30
N.W. Corner, Section 31
T 19 N, R 2 E

The Harrison Monument at Corner 1 was set in place of a vertical section of railroad rail found. The Harrison Monument at Corner 2 was found in place. A BCS record of October 7, 1867 states, with respect to Corner 1, "Reestablished from Ash stump found an old stake where set a Rock 12.8.6 in. A notch on top, + on side." A BCS record of April 30, 1919, states with respect to Corner 2, "Found Rock at place, set Rock on top, 14.6.6." A BCS tie card dated July, 1968 shows Corner 1 as Stone Found. A BCS tie card dated July 28, 2005 shows Corner 1 as a Steel Rail and shows Corner 2 as a Harrison Monument. Corner 1 was excavated in May, 2010. At that time, the vertical section of railroad rail was found and no other evidence of the corner was found. Though the railroad rail is not mentioned on the 1968 tie card, it is known to have been a common practice for BCS field crews of that era to remove a stone, if found, and replace it with a vertical section of rail. Hence, the rail is considered to have likely been in the same position as the stone referenced in the 1867 record. The rail was held as marking the corner and was replaced with a Harrison Monument in the same position. The Harrison monument at Corner 2 falls on the range line as defined by Corner 1 and the standard corner approximately one-half mile south (see Corner NE-050-600) and falls at almost exactly the original closing distance of 42 links south of Corner 1. Corner 2 was not excavated and the found Harrison monument was held as marking the corner. The monuments at both corners were raised to the level of the surface of the newly paved roadways in May, 2018. Corner 1 was originally established as a wood post in 1819 and Corner 2 was originally established as a wood post in 1821.



Kenneth E. Hedge
 Kenneth E. Hedge, County Surveyor

James S. Swift
 James S. Swift, IN LS 20200054
 August 1, 2018

Center Township Union Township

Section 25 T19N, R1E	Section 30 T19N, R2E
Section 36 T19N, R1E	Section 31 T19N, R2E