

SECTION CORNER RECORD

SW 500-600

BOONE COUNTY SURVEYOR'S OFFICE

State Plane grid coordinates NAD83 (2011):

Corner 1: North: 1718964.41 East: 3093332.04 (U.S. survey feet)

Corner 2: North: 1718929.45 East: 3093331.99 (U.S. survey feet)

Type of monument: Harrison, 4" disk 'Section Corner'

Depth: One inch below adjacent road or ground

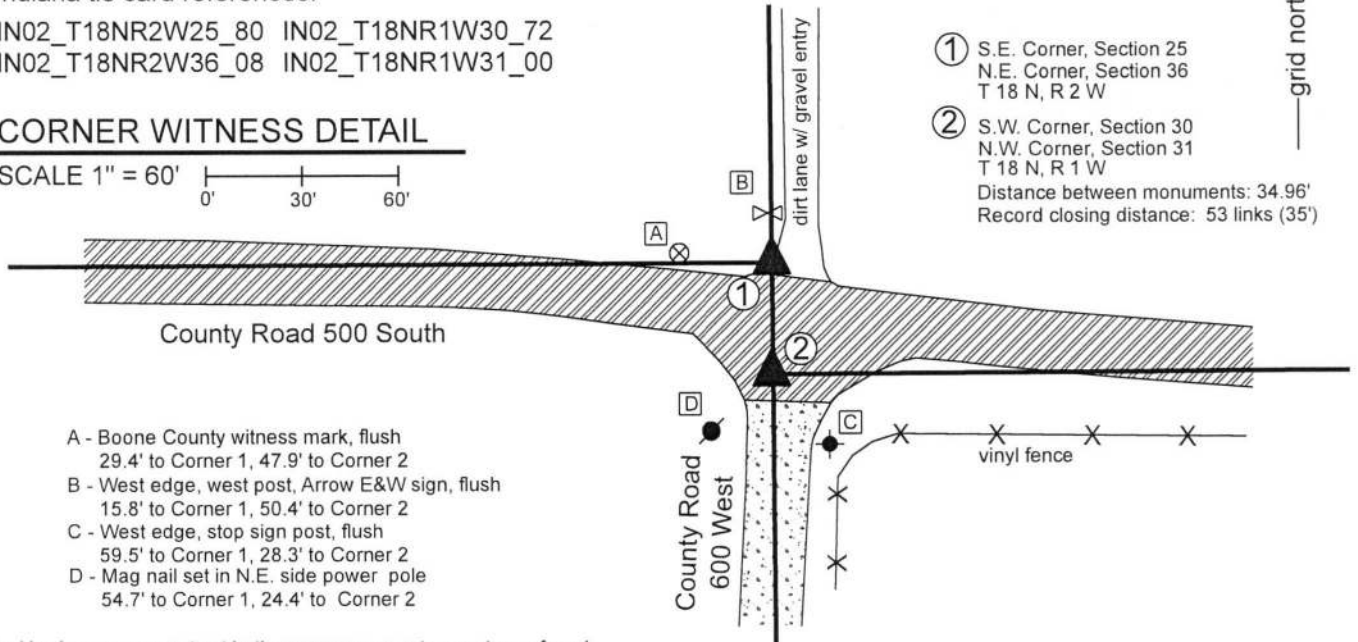
Indiana tie card references:

IN02_T18NR2W25_80 IN02_T18NR1W30_72

IN02_T18NR2W36_08 IN02_T18NR1W31_00

CORNER WITNESS DETAIL

SCALE 1" = 60'



- ① S.E. Corner, Section 25
N.E. Corner, Section 36
T 18 N, R 2 W
 - ② S.W. Corner, Section 30
N.W. Corner, Section 31
T 18 N, R 1 W
- Distance between monuments: 34.96'
Record closing distance: 53 links (35')

- A - Boone County witness mark, flush
29.4' to Corner 1, 47.9' to Corner 2
- B - West edge, west post, Arrow E&W sign, flush
15.8' to Corner 1, 50.4' to Corner 2
- C - West edge, stop sign post, flush
59.5' to Corner 1, 28.3' to Corner 2
- D - Mag nail set in N.E. side power pole
54.7' to Corner 1, 24.4' to Corner 2

The Harrison monuments at both corners were set over stones found.

A BCS record dated April 22, 1869 states, with respect to Corner 1, "Reest. Set two rocks. One 5.4.3 +. Top one 20.16.10 +." A BCS record dated December 12-13, 1876 states, with respect to Corner 2, Reestablished 53 links S. of Corner Secs. 25 + 36. Rock 15,12,4 + on E. side."

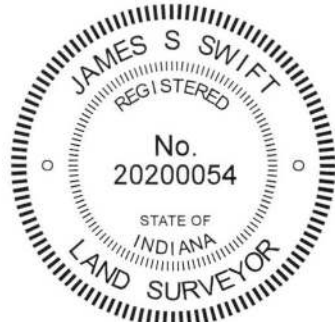
No recent BCS tie cards were found referencing this corner.

Excavation was performed at Corner 2 on August 29, 2018 and excavation was performed at Corner 1 on September 26, 2018.

Prior to excavation, vertical sections of 5/8 inch diameter rebars were found ostensibly marking each corner, separated by 35.2 feet, very close to the record closing distance of 53 links (34.98 feet). Excavation revealed the monuments described in the 1869 and 1876 records at the respective corners. The stone at Corner 1 was found at 12 inches deep, slightly north of the roadway, below the gravel entry for the farm lane to the north. This stone had a distinct etched + mark on the top center. The west side of the stone was exposed and found to be 21 inches tall and another stone was found situated below. The top of rock measured 11 inches N-S by 8 inches E-W and the stone appeared that it is yet larger in both dimensions further down the rock. For purposes of preserving the integrity of the edge of the drive while setting the monument the full N-S, E-W dimensions were not exposed and measured. The stone is clearly the top stone described in the 1869 record and was accepted as marking the corner. A Harrison monument was set over the etched + mark on the top of the rock.

Excavation at Corner 2 revealed the stone described in the 1876 record at 22 inches deep in the road. This stone is 53 links south of the stone at Corner 1, though that fact was only confirmed after the later excavation of Corner 1. The stone is of sandstone material which was breaking up as it was interacted with. No specific marks were found and it is noted that the top of the stone may have previously broken off, due to the soft sandstone material. The top 10 inches of the stone were exposed. At 10 inches below the top of the stone, it measured 12 inches N-S by 4 inches E-W matching two of the dimensions of described in the 1876 record. The stone was left in place and a Harrison monument was set over the top, high point of the stone. The rebars were both removed during excavation. The rebar near Corner 1 had been 3.1 feet south and 1.1 foot west of the mark on the stone. The rebar near Corner 2 had been 3.3 feet south and 0.8 foot west of the high point of the stone found at that corner. It is noted that the Harrison monument set over the stone at Corner 2 is 0.3 foot west of a straight line connecting Corner 1 and the standard corner 1/2 mile south (see Corner SW 550-600). Corner 1 was originally set in 1819 and Corner 2 was originally set in 1820.

Jackson Township



Kenneth E. Hedge
Kenneth E. Hedge, County Surveyor

James S. Swift
James S. Swift, IN LS 20200054
October 1, 2018

Section 25 T18N, R2W	Section 30 T18N, R1W
Section 36 T18N, R2W	Section 31 T18N, R1W

SECTION CORNER RECORD

BOONE COUNTY SURVEYOR'S OFFICE

SW 550-600

Data for Corner 1 only:

State Plane grid coordinates NAD83 (2011):

North: 1716313.98 East: 3093353.63 (U.S. survey feet)

Type of monument: Harrison, 4" disk 'Section Corner'

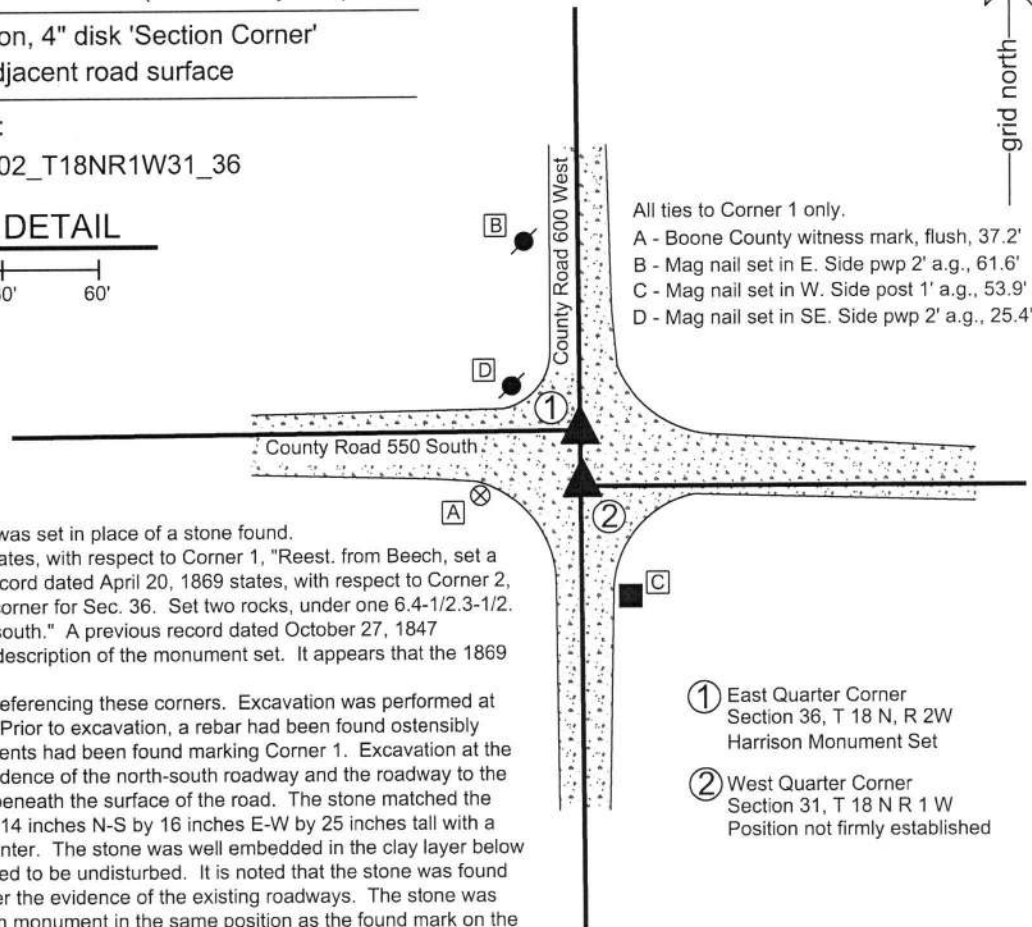
Depth: six inches below adjacent road surface

Indiana tie card references:

IN02_T18NR2W36_44 IN02_T18NR1W31_36

CORNER WITNESS DETAIL

SCALE 1" = 60'

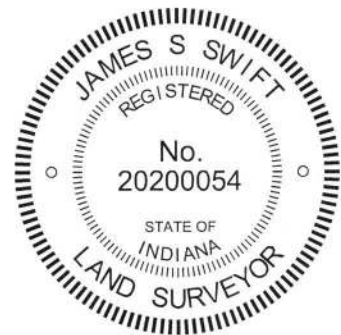


The Harrison monument at Corner 1 was set in place of a stone found. A BCS record dated April 22, 1869 states, with respect to Corner 1, "Reest. from Beech, set a rock 25,16, 14 marked +." A BCS Record dated April 20, 1869 states, with respect to Corner 2, "Reestablished 26 1/2 links south of corner for Sec. 36. Set two rocks, under one 6.4-1/2.3-1/2. Top one 16.13.7. Old corner too far south." A previous record dated October 27, 1847 referenced Corner 2 with no specific description of the monument set. It appears that the 1869 record disputes the 1847 record.

No recent BCS tie cards were found referencing these corners. Excavation was performed at both corners on September 7, 2018. Prior to excavation, a rebar had been found ostensibly marking Corner 2. No recent monuments had been found marking Corner 1. Excavation at the apparent position of Corner 1, per evidence of the north-south roadway and the roadway to the west, revealed a stone found barely beneath the surface of the road. The stone matched the description of the 1869 record, being 14 inches N-S by 16 inches E-W by 25 inches tall with a distinct etched "+" mark on the top center. The stone was well embedded in the clay layer below the thin layer of road bed and appeared to be undisturbed. It is noted that the stone was found precisely at the expected position, per the evidence of the existing roadways. The stone was removed and replaced with a Harrison monument in the same position as the found mark on the top of the stone. The Harrison monument was buried at 6 inches deep in the gravel road.

Excavation at Corner 2 revealed that the previously found rebar was situated adjacent to a section of railroad rail, leaning substantially to the east, the top of which was at 4 inches deep in the road bed. The rebar and top of the rail were situated 0.5 foot east and 1 foot north of the expected position of Corner 2, as determined with respect to the stone found marking Corner 1, the 26 1/2 link reference in the 1869 record and an approximate north-south line determined by the center of County Road 600 West in the vicinity of the township corner approximately 1/2 mile south. Excavation in the position of the found rail/rebar and the expected position for Corner 2 revealed no further evidence. The stones described in the 1869 record were not found. It was observed that the fill material of the road was of a different color and character than found around the stone at Corner 1. The rebar and rail were removed during excavation. The precise position of Corner 2 will be determined after the township corner to the south is established. It is noted that sections of railroad rail were typically set by BCS crews of the late 1960s and early 1970s, but no record was found in the Boone County Surveyor's Office documenting the setting of the rail. If a stone was found and removed, in association with the setting of the rail, that information was not documented. Given the precision associated with records of the era of the 1869 record, it is expected that the stones at Corner 2 were indeed set at very close to 26 1/2 links (17.5 feet) south of Corner 1 and that the rail and rebar were both approximately 1 foot north and 0.5 feet east of the position established for Corner 2 in 1869.

Corner 1 was originally established as a wood post in 1819. Corner 2 is not an original federal corner.



Jackson Township

Section 36 T18N, R2W	Section 31 T18N, R1W
-------------------------	-------------------------

Kenneth E. Hedge
 Kenneth E. Hedge, County Surveyor

James S. Swift
 James S. Swift, IN LS 20200054

February 6, 2019

SECTION CORNER RECORD

SW 600-700

BOONE COUNTY SURVEYOR'S OFFICE

State Plane grid coordinates NAD83 (2011):
 North: 1713621.22 East: 3088047.32 (U.S. survey feet)
 North: 1713621.05 East: 3088004.40 (U.S. survey feet)

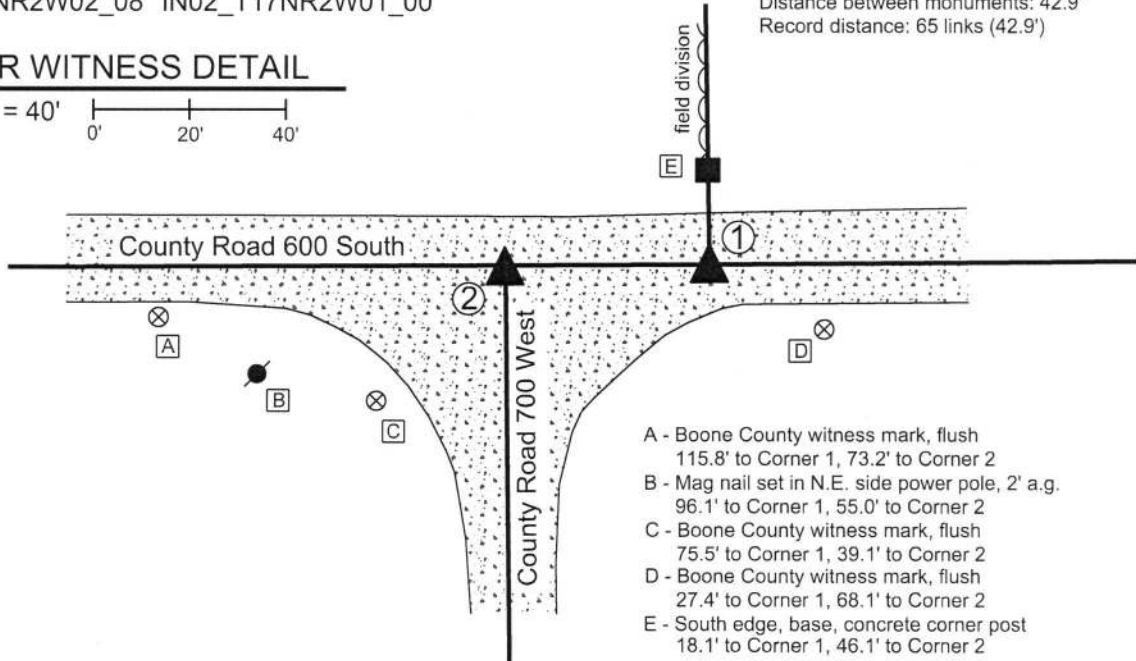
Type of monument: Harrison, 4" disk 'Section Corner'
 Depth: Six inches below adjacent gravel road surface

Indiana tie card references:
 IN02_T18NR2W35_80 IN02_T18NR2W36_72
 IN02_T17NR2W02_08 IN02_T17NR2W01_00

- ① S.E. Corner, Section 35
 S.W. Corner, Section 36
 T 18 N, R 2 W
 - ② N.W. Corner, Section 1
 N.E. Corner, Section 2
 T 17 N, R 2 W
- Distance between monuments: 42.9'
 Record distance: 65 links (42.9')

CORNER WITNESS DETAIL

SCALE 1" = 40'



- A - Boone County witness mark, flush
 115.8' to Corner 1, 73.2' to Corner 2
- B - Mag nail set in N.E. side power pole, 2' a.g.
 96.1' to Corner 1, 55.0' to Corner 2
- C - Boone County witness mark, flush
 75.5' to Corner 1, 39.1' to Corner 2
- D - Boone County witness mark, flush
 27.4' to Corner 1, 68.1' to Corner 2
- E - South edge, base, concrete corner post
 18.1' to Corner 1, 46.1' to Corner 2

The Harrison monuments at both corners were set over stones found.
 A BCS record dated November 20-21, 1871 states, with respect to Corner 1, "Reest. from trees (one a stp). Set two rocks. One 18.14.11 +. Top one 20.16.11 +." A BCS record dated May 22, 1896 states, with respect to Corner 2, "Set Rock 8x10x12 +. Estab. 65 links W. of Cors to 35-36."
 A BCS tie card referencing Corner 2, dated April 17, 1972 states, "No stone - RRR put in."
 These corners were excavated on September 10, 2018. Prior to excavation, a rebar was found at 2 inches deep in the gravel road, situated against the north edge of a vertical section of railroad rail, the top of which was at 4 inches deep. These monuments appeared to be marking Corner 2. No metal monuments were found near Corner 1 prior to excavation. Excavation at Corner 1 revealed a stone found at 16 inches deep. The stone had a distinct etched + mark on the top and measured 20 inches N-S by 16 inches E-W with the top 8 inches exposed. The full height of 11 inches was measured on the west edge. Probing indicated that another stone is situated below the top stone. These stones were accepted as being the same monuments described in the 1871 record and were held as marking Corner 1. A Harrison monument was set directly over the etched + mark on the top stone. Excavation at Corner 2 revealed a stone found at 18 inches deep. This stone also had a distinct + mark on top. The stone measured one inch short of the 1896 record dimensions in all directions, being 9 inches N-S by 7 inches E-W by 11 inches tall. This stone was accepted as being the same monument described in the 1896 record. The specific position of Corner 2 was established on the township line as defined by Corner 1 and the standard corner one half mile west (see Corner SW 600-750), over the north edge of the stone, 0.4 foot north of the + mark). The railroad rail, removed during excavation, had been 1.4 feet south and 1.4 feet west of the final monumented position for Corner 2.
 The distance between the two stones is 42.9 feet or 65 links, matching the original federal closing distance and the offset reported in the 1895 record. Corner 1 was originally established as a wood post in 1819. Corner 2 was originally established as a wood post in 1820.



Kenneth E. Hedge
 Kenneth E. Hedge, County Surveyor

James S. Swift
 James S. Swift, IN LS 20200054
 September 19, 2018

