

SECTION CORNER RECORD

SE 500-1100

BOONE COUNTY SURVEYOR'S OFFICE

State Plane grid coordinates NAD83 (NSRS 2007):

North: 1720649.93 East: 3183531.59 (U.S. survey feet)

Type of monument: Harrison, 4" disk 'Section Corner'

Depth: One inch below adjacent road surface

Indiana tie card references:

IN02_T18NR2E25_72 IN02_T18NR2E26_80

IN02_T18NR2E35_08 IN02_T18NR2E36_00

CORNER WITNESS DETAIL

SCALE 1" = 40'



- A - Mag nail set in E. side power pole, 2.0' a.g., 15.4'
- B - Boone County witness mark, flush, 39.17'
- C - Mag nail set in N. side power pole, 2.0' a.g., 47.0'

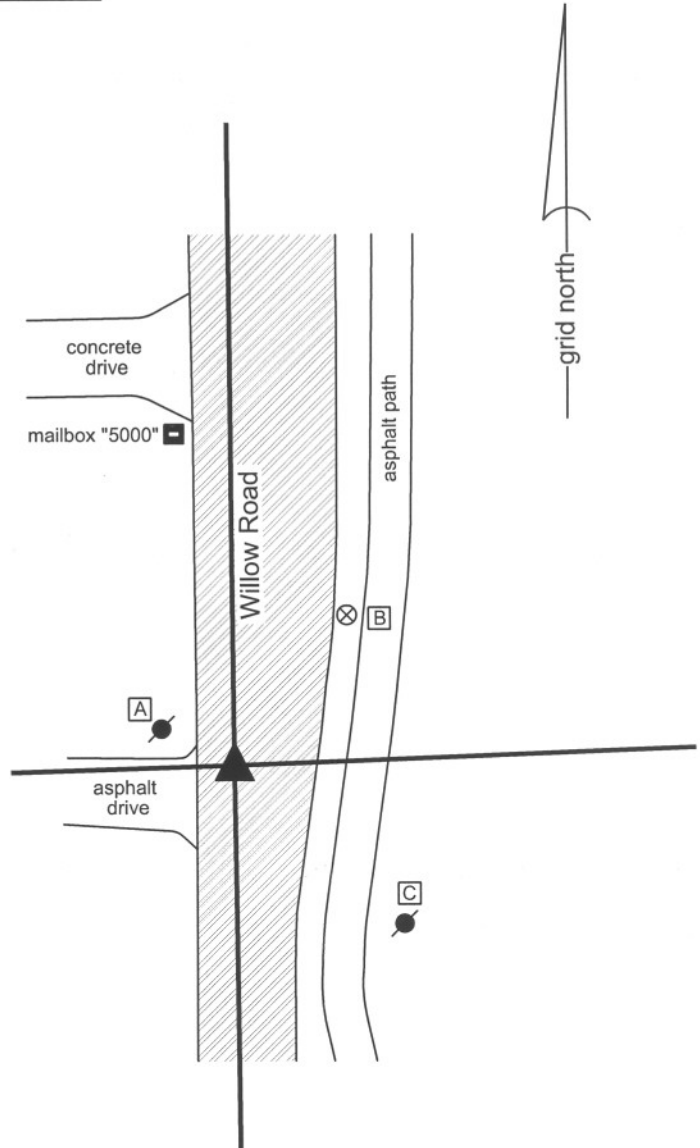
Boone County witness mark is a 3/8" diameter x 2' long rebar bearing a metal cap stamped "Boone County Witness Point."

The harrison monument was set in place of a railroad spike and iron pipe found.

No specific descriptions of this corner were found in the BCS Surveyor's Record, but it is mentioned as the terminal points for several measurements in 1834 and another measurement in 1859. A BCS tie card dated April 15, 1991 shows the corner as a railroad spike found. A BCS reference sheet dated June 15, 1989 shows the same. All known surveys and plats in this vicinity have held the railroad spike as the. This corner was monumented on July 30, 2009. Significant excavation was not performed as utility markings clearly indicate that a water main runs along the center of the Willow Road, adjacent to and immediately east of the corner. It is considered highly likely that any corner stone which may have existed at this corner would have been obliterated during the installation of the water main.

Prior to monumentation, a railroad spike was found in a hole in the asphalt approximately 3 inches below grade. A 1 inch diameter iron pipe was found directly below the railroad spike. No other evidence was found. The harrison monument was set in place of the railroad spike and iron pipe.

This corner was originally established as a wood post in July, 1821.



Kenneth E. Hedge
 Kenneth E. Hedge, County Surveyor

James S. Swift
 James S. Swift, IN LS 20200054
 July 14, 2010

Eagle Township

| | |
|-------------------------|-------------------------|
| Section 26 T18N, R2E | Section 25 T18N, R2E |
| Section 35 T18N, R2E | Section 36 T18N, R2E |

SECTION CORNER RECORD

SE 500-1150


BOONE COUNTY SURVEYOR'S OFFICE

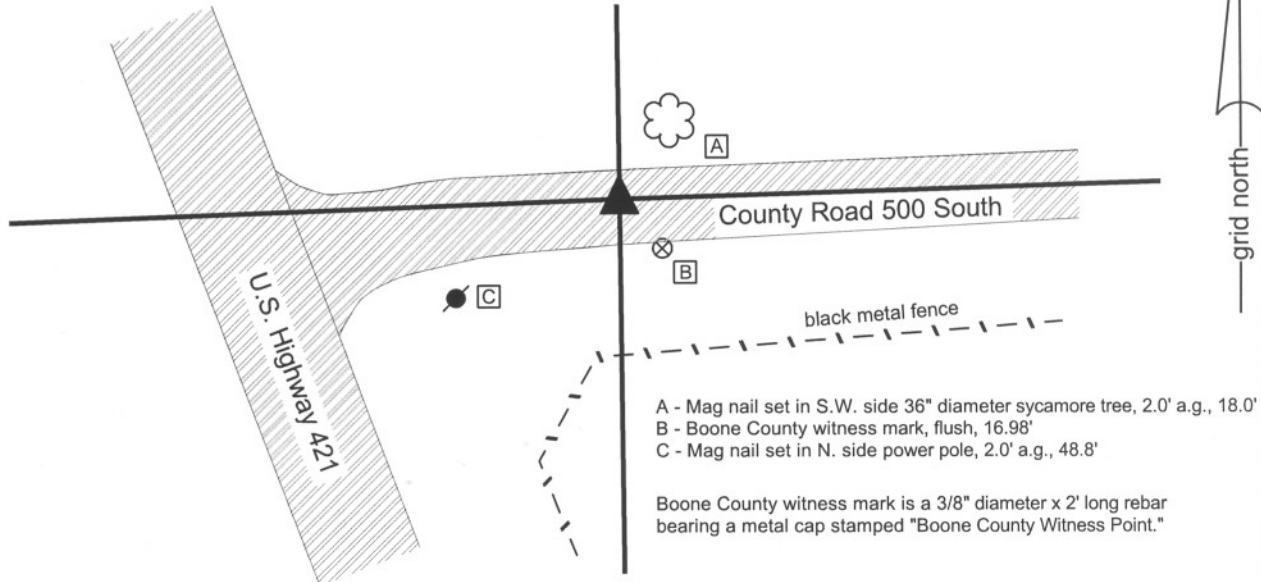
State Plane grid coordinates NAD83 (NSRS 2007):
North: 1720747.25 East: 3186197.39 (U.S. survey feet)

Type of monument: Harrison, 4" disk 'Section Corner'
Depth: One inch below adjacent road surface

Indiana tie card references:
IN02_T18NR2E25_76 IN02_T18NR2E36_04

CORNER WITNESS DETAIL

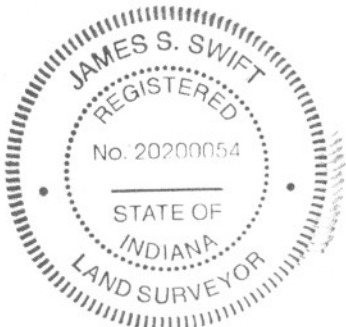
SCALE 1" = 50' 



The harrison monument was set at a calculated position. This corner is mentioned in the BCS Surveyor's Record only twice, once as the original establishment of the corner in 1821 and again as the terminal point for a measurement in 1834. No recent BCS tie cards were found referencing the corner. This corner falls in an area transitioning from cut on the north side to a significant amount of fill on the south side. It is considered unlikely that any early monuments would be found, due to clear previous disruption of the ground associated with the grading of the road in this vicinity.

A railroad spike had been set at a calculated location for the corner in 1994, as documented on a private survey recorded in Survey Book 1, page 80. That survey states that the corner was established at the same distance and on the same line between a P.K. nail found at the southeast corner of the southwest quarter of the southeast quarter of section 25 and a 3/4 inch rebar found at the southeast corner of section 25. However, during excavation on August 21, 2009 a stone was found at the closing corner adjacent to the southeast corner of section 25 and the southeast corner of section 25 was established at closing distance south of that stone, which point is 2.0 feet north and 0.4 feet west of the 3/4 inch rebar, as documented on the section corner record sheet for corner SE-500-1200. On November 19, 2009 the aforementioned southeast corner of the southwest quarter of the southeast quarter was excavated. The referenced P.K. nail was found at 3 inches deep, a 1/2 inch rebar was found at 12 inches deep and a railroad rail on end was found at 21 inches deep. The nail was approximately over the rebar which was approximately over the rail. No stones or other evidence were found and the center of the top of the rail was accepted as marking the corner. The position of the southwest corner of the southeast quarter of section 25, which is the subject corner of this record, was calculated by the same means as documented on the aforementioned private survey, but holding the revised position for the southeast corner of the section. That is, the line from the harrison monument at the southeast corner of section 25 through the rail 1/4 mile west was extended west at twice the distance. The computed position for the corner falls 1.8 feet south and 0.4 feet east of the railroad spike. It is noted that the computed position fits better with the local evidence in the form of the center of the County Road 500 South to the East, as did the revised position for the southeast corner fit better with the center of the road extended west from that corner. The harrison monument was set at the computed position and the railroad spike was removed.

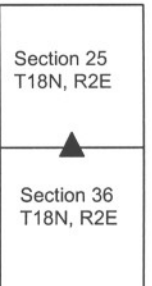
This corner was original established as a wood post in July, 1821.



Kenneth E. Hedge
 Kenneth E. Hedge, County Surveyor

James S. Swift
 James S. Swift, IN LS 20200054
 July 14, 2010

Eagle Twp



SECTION CORNER RECORD

SE 500-1200

BOONE COUNTY SURVEYOR'S OFFICE

State Plane grid coordinates NAD83 (NSRS 2007):

North: 1720827.16 East: 3188864.00 (U.S. survey feet) (Standard corner)

Corner 1 only

Type of monument: Harrison, 4" disk 'Section Corner'

Depth: One inch below adjacent road surface

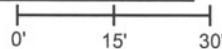
Indiana tie card references:

IN02_T18NR2E25_80

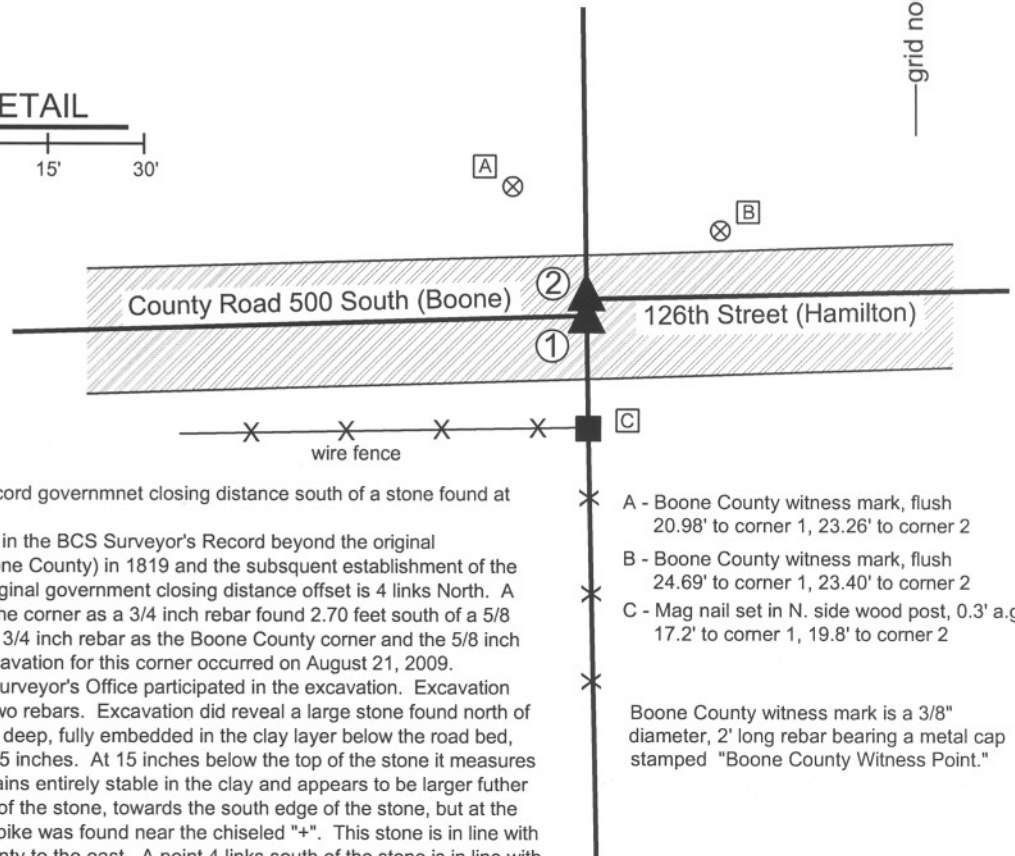
IN02_T18NR2E36_08

CORNER WITNESS DETAIL

SCALE 1" = 30'



- ① S.E. Corner, Section 25
N.E. Corner, Section 36
T 18 N, R 2 E (Boone County)
Harrison monument
- ② S.W. Corner, Section 30
N.W. Corner, Section 31
T 18 N, R 2 E (Hamilton County)
Mag spike monument
Distance between monuments:
2.64 feet (4 links)



- A - Boone County witness mark, flush 20.98' to corner 1, 23.26' to corner 2
- B - Boone County witness mark, flush 24.69' to corner 1, 23.40' to corner 2
- C - Mag nail set in N. side wood post, 0.3' a.g. 17.2' to corner 1, 19.8' to corner 2

Boone County witness mark is a 3/8" diameter, 2' long rebar bearing a metal cap stamped "Boone County Witness Point."

The harrison monument was set at the record government closing distance south of a stone found at the Hamilton County corner. This corner is not described or mentioned in the BCS Surveyor's Record beyond the original establishment of the standard corner (Boone County) in 1819 and the subsequent establishment of the closing corner (Hamilton County). The original government closing distance offset is 4 links North. A BCS tie card dated May 22, 1991 shows the corner as a 3/4 inch rebar found 2.70 feet south of a 5/8 inch rebar. Recent surveys have held the 3/4 inch rebar as the Boone County corner and the 5/8 inch rebar as the Hamilton County corner. Excavation for this corner occurred on August 21, 2009. Representatives of the Hamilton County Surveyor's Office participated in the excavation. Excavation revealed no specific evidence below the two rebars. Excavation did reveal a large stone found north of the northerly rebar. The stone is 4 inches deep, fully embedded in the clay layer below the road bed, sticking out of the clay by approximately 15 inches. At 15 inches below the top of the stone it measures 14 inches E-W by 15 inches N-S and remains entirely stable in the clay and appears to be larger further down. A vague chiseled "+" is on the top of the stone, towards the south edge of the stone, but at the high point of the top. A 6 inch long boat spike was found near the chiseled "+". This stone is in line with the center of 126th street in Hamilton County to the east. A point 4 links south of the stone is in line with the center of County Road 500 South in Boone County to the west. It was agreed by the representatives of the two offices that this stone appears to monument the Hamilton County corner. No other stones were found in an area of excavation extended to 6 feet south of the stone and 2 feet to the east and 2 feet to the west. A Mag Spike was set over the etched "+" on the stone, per the Hamilton County Surveyor's Office. The location of the Boone County corner was computed at the record closing distance of 4 links (2.64 feet) and set on the range line extended south through the etched "+" on the stone. A harrison monument was set at the Boone County corner. The rebars, both removed during excavation, had been 2.0 feet north and 0.4 feet east of the respective corners. The Boone County corner was originally established as a wood post in 1819.



Kenneth E. Hedge
Kenneth E. Hedge, County Surveyor

James S. Swift
James S. Swift, IN LS 20200054
July 14, 2010

Eagle Township
Boone County

Clay Township
Hamilton Township

| | |
|-------------------------|-------------------------|
| Section 25 T18N, R2E | Section 30 T18N, R3E |
| Section 36 T18N, R2E | Section 31 T18N, R3E |

PHOTOGRAPHIC DOCUMENTATION

Date of photography: August 21, 2009

View of the stone as first exposed on 8/21/2009. The stone had been previously exposed on June 20, 2007.



View from the west, looking across the stone and east along 126th Street.



For details and documentation, refer to related sheet "Section Corner Record."

The corner area prior to excavation on 8/21/2009. The stone is under the asphalt patch on the left, the painted hole in the road represents the corner previously thought to be the Hamilton County corner and the small hole to the right represents the previously held location of the Boone corner.



The stone and area of excavation. View from above and south.



The stone from above and west.



SECTION CORNER RECORD

SE 550-1100

BOONE COUNTY SURVEYOR'S OFFICE

State Plane grid coordinates NAD83 (NSRS 2007):

North: 1718008.83 East: 3183565.95 (U.S. survey feet)

Type of monument: Harrison, 4" disk 'Section Corner'

Depth: One inch below adjacent road surface

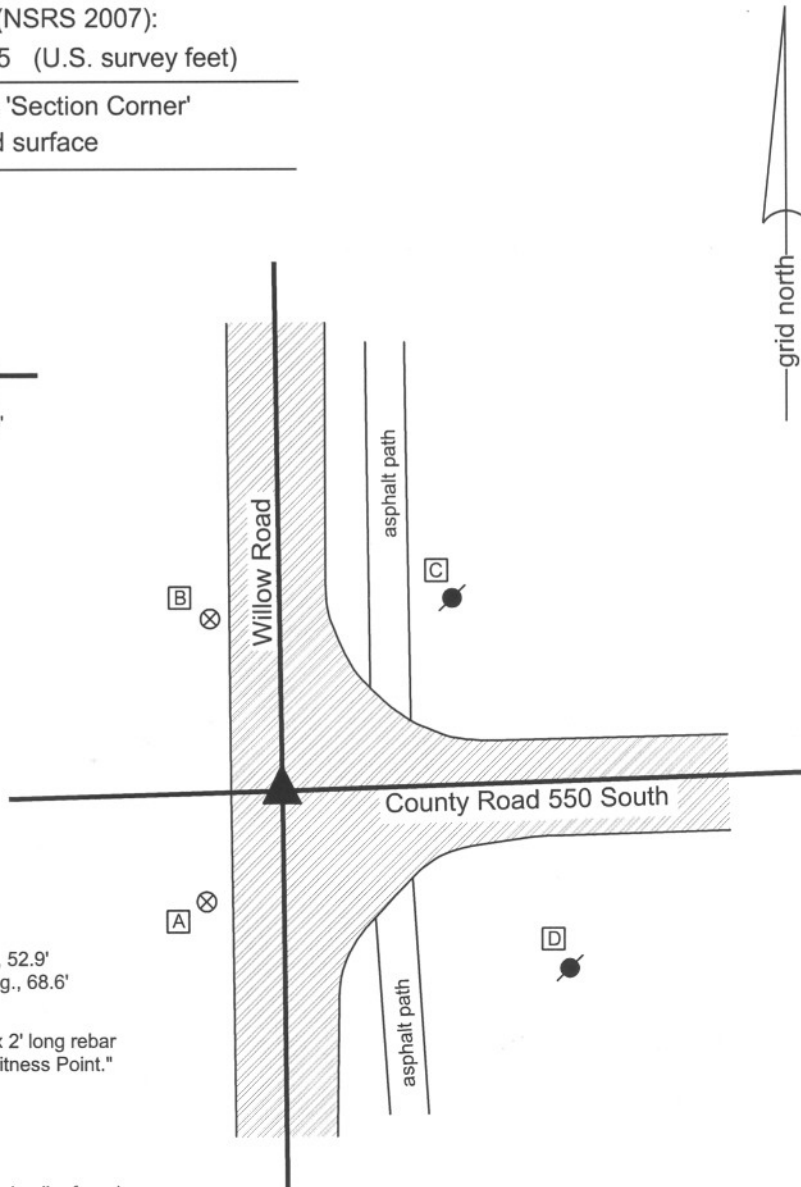
Indiana tie card references:

IN02_T18NR2E35_44

IN02_T18NR2E36_36

CORNER WITNESS DETAIL

SCALE 1" = 40'



- A - Boone County witness mark, flush, 28.07'
- B - Boone County witness mark, flush, 39.00'
- C - Mag nail set in W. side power pole, 2.0' a.g., 52.9'
- D - Mag nail set in N.W. side power pole, 3.0' a.g., 68.6'

Boone County witness mark is a 3/8" diameter x 2' long rebar bearing a metal cap stamped "Boone County Witness Point."

The harrison monument was set in place of a railroad spike found.

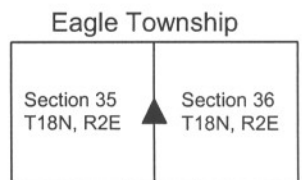
A BCS record of April 2-3, 1877 states "found by intersecting lines." A BCS record of September 3-4, 1889 states "Est. from Wit rock (see Survey of 1877). Set Rock + 24,8,7." A BCS tie card dated March 6, 1991 shows the corner as a P.K. nail found. The center of the road at this corner falls 3 feet above the adjoining land to the northeast, 4 feet above the adjoining land to the northwest and southeast and significantly more that than above the adjoining land to the southwest. Significant excavation was not performed. A railroad spike was found at 3 inches below grade which appears to fit with the references to the P.K. nail on the 1991 tie card. The plats and surveys tied to this corner have generally held the railroad spike or P.K. nail as the corner. The railroad spike was accepted as marking the corner and the harrison monument was set in its place.

This corner was originally established as a wood post in July, 1821.



Kenneth E. Hedge
 Kenneth E. Hedge, County Surveyor

James S. Swift
 James S. Swift, IN LS 20200054
 July 14, 2010



SECTION CORNER RECORD

SE 550-1200

BOONE COUNTY SURVEYOR'S OFFICE

State Plane grid coordinates NAD83 (NSRS 2007):

North: 1718179.71 East: 3188914.15 (U.S. survey feet)

Corner 1 only

Type of monument: Harrison, 4" disk 'Section Corner'

Depth: Flush with adjacent road surface

Indiana tie card references:

IN02_T18NR2E36_44

① East 1/4 corner
Section 36, T 18 N, R 2 E
Harrison monument

② West 1/4 corner
Section 31, T 18 N, R 3 E
Monument removed prior to 2015

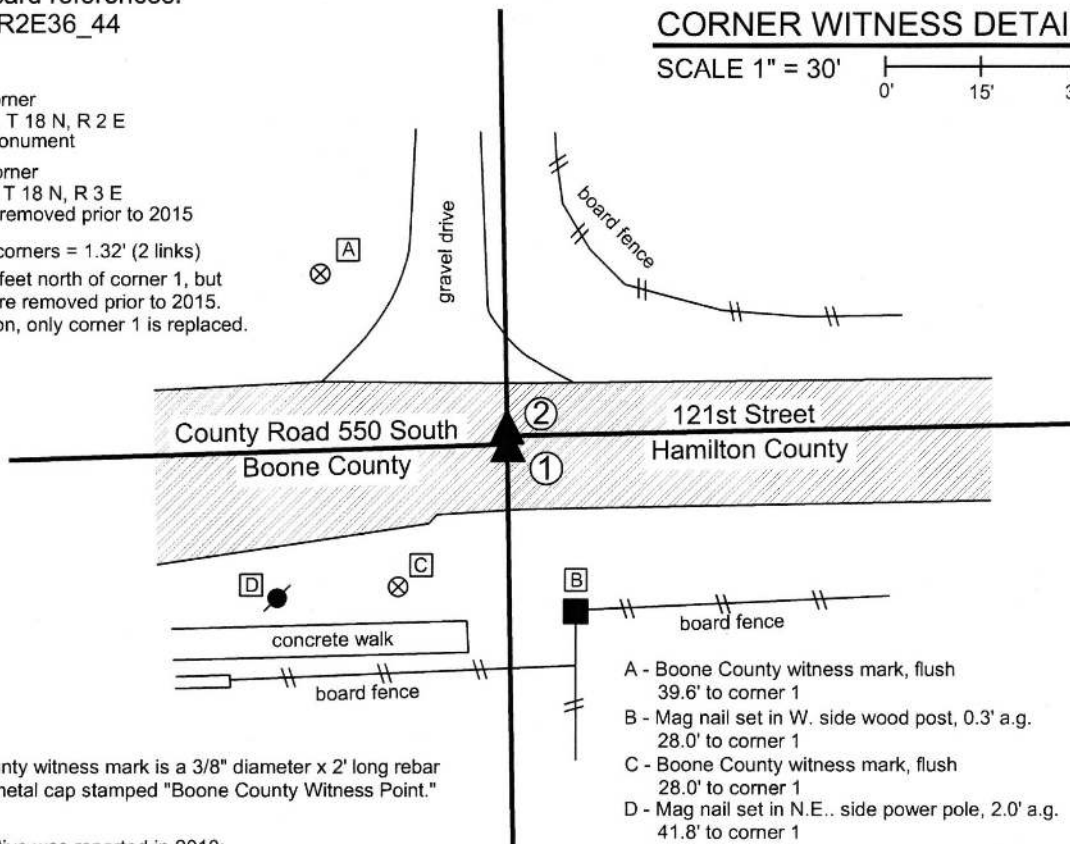
Distance between corners = 1.32' (2 links)

Corner 2 falls 1.32 feet north of corner 1, but monuments were removed prior to 2015.

At time of publication, only corner 1 is replaced.

CORNER WITNESS DETAIL

SCALE 1" = 30'
0' 15' 30'



Boone County witness mark is a 3/8" diameter x 2' long rebar bearing a metal cap stamped "Boone County Witness Point."

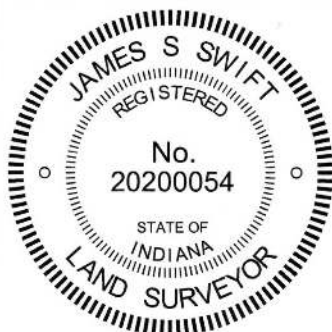
The following narrative was reported in 2010:

The Harrison monument at the closing corner (Hamilton County) was set over a stone found. The Harrison monument at the standard corner (Boone County) was set at the record closing distance south of the Hamilton County corner.

No specific descriptions of this corner were found in the BCS Surveyor's Record. It is mentioned as the terminal point for a measurement in 1837 but no further mentions of the corner were found. No recent BCS tie cards were found for the corner. A survey by the Schneider Corporation dated June 17, 2003, project number 1299.004, supplied by the Hamilton County Surveyors office, show the closing corner as a stone found. This corner was excavated on August 21, 2009 in cooperation with Joe Mullins of the Hamilton County Surveyor's Office. Prior to excavation a Harrison monument was found and a P.K. nail was found 3 feet south. No documentation was found for these monuments. Both monuments were removed and a stone was found at 7 inches below grade, below the Harrison. The stone has a clearly etched "+" on the top. This stone was accepted as marking the Hamilton County corner. No stone was found for the Boone County corner. A Harrison monument was set over the etched "+" on the stone. The position of the Boone County corner was computed at 2 links south (1.32 feet) of the stone and another Harrison monument set at this position.

The Boone County Corner was originally established as a wood post in 1819.

In 2015, the Boone County Surveyor's Office was alerted to the fact that the monuments had been removed during installation of an adjacent sewer. The Harrison monument at corner 1 was replaced in the same position on October 6, 2015. AT the time of publication, corner 2 has not been replaced.



Kenneth E. Hedge
 Kenneth E. Hedge, County Surveyor

James S. Swift
 James S. Swift, IN LS 20200054
 March 28, 2016

Eagle Township
Boone County

Clay Township
Hamilton County

Section 36
T18N, R2E

Section 31
T18N, R3E



PHOTOGRAPHIC DOCUMENTATION

Date of photography: August 21, 2009

The stone marking the Hamilton County corner.



The south side of the stone marking the Hamilton County corner fully exposed along with the area of excavation in which evidence of the Boone County corner was searched for but not found.



View from the west looking across the stone marking the Hamilton County corner and east along 121st Street.



For details and documentation, refer to related sheet "Section Corner Record."

SECTION CORNER RECORD

SE 600-1100

BOONE COUNTY SURVEYOR'S OFFICE

State Plane grid coordinates NAD83 (NSRS 2007):

Corner 1: North: 1715374.00 East: 3183593.68 (U.S. survey feet)

Corner 2: North: 1715374.59 East: 3183614.80 (U.S. survey feet)

Corner 1:

Type of monument: Harrison, 4" disk 'Section Corner'

Depth: 3 inches above adjacent ground.

Corner 2:

Type of monument: 5/8 inch rebar, 30 inches long with metal cap stamped "Boone County Surveyor" (flush).

Indiana tie card references:

IN02_T17NR2E01_00 IN02_T17NR2E02_08

IN02_T18NR2E35_80 IN02_T17NR2E36_72

The harrison monument at corner 1 was set in place of a one-inch diameter pipe found. The rebar set at corner 2 was set on the township line at the record closing offset distance of 32 links (21.12 feet) east of corner 1.

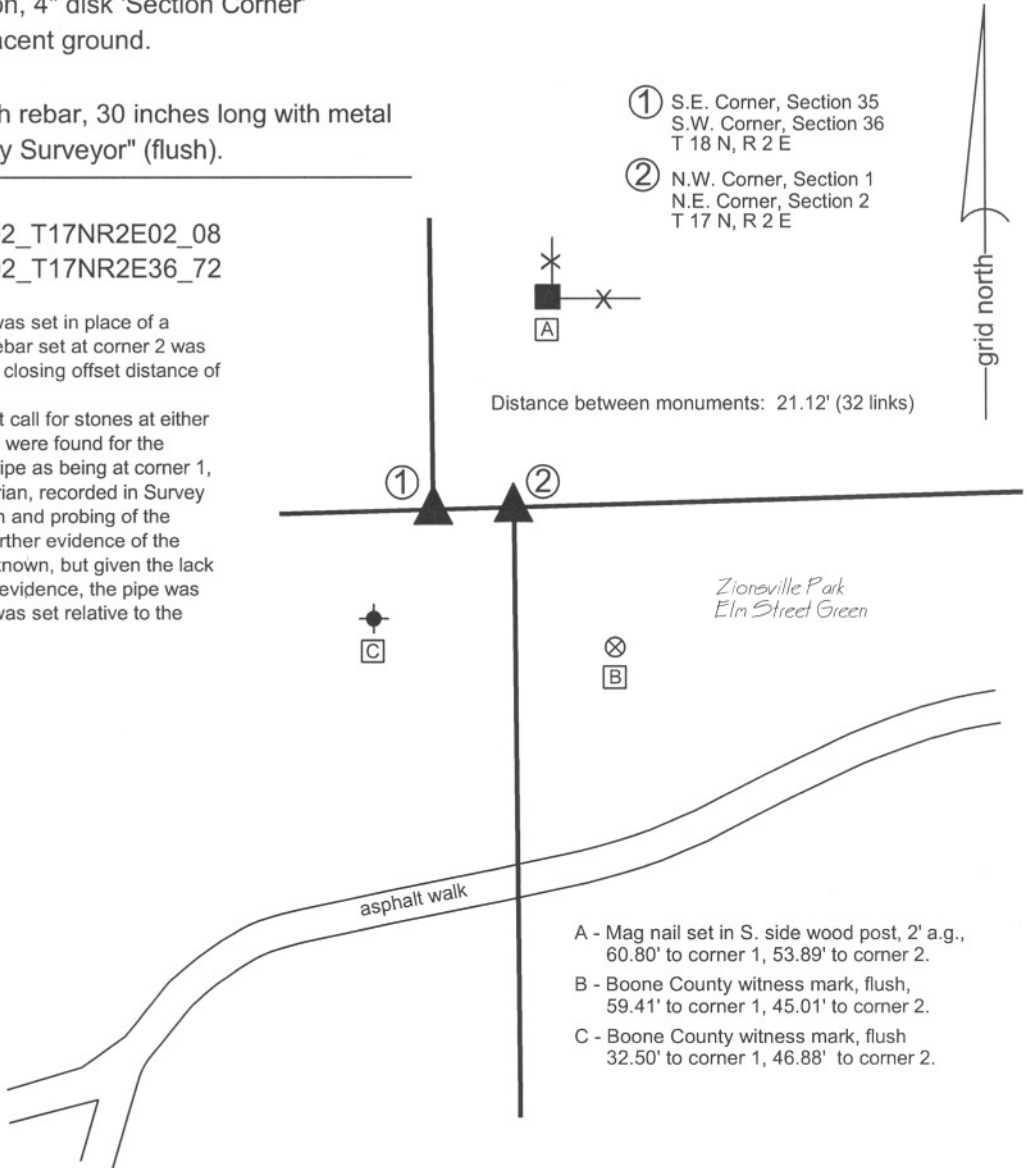
The BCS Surveyor's Record does not call for stones at either of these corners. No recent tie cards were found for the corners. Several surveys show the pipe as being at corner 1, including a survey by Richard A. O'Brian, recorded in Survey Book 4, page 38. General excavation and probing of the ground in the area did not produce further evidence of the corner. The origin of the pipe is not known, but given the lack of other evidence, including contrary evidence, the pipe was held as marking corner 1. Corner 2 was set relative to the position of Corner 1, as noted above.

CORNER WITNESS DETAIL

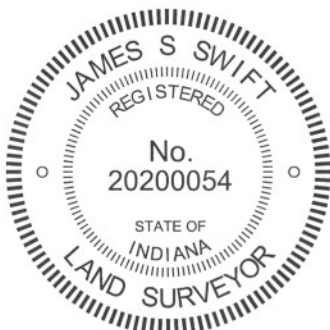
SCALE 1" = 50'



- ① S.E. Corner, Section 35
S.W. Corner, Section 36
T 18 N, R 2 E
- ② N.W. Corner, Section 1
N.E. Corner, Section 2
T 17 N, R 2 E



- A - Mag nail set in S. side wood post, 2' a.g., 60.80' to corner 1, 53.89' to corner 2.
- B - Boone County witness mark, flush, 59.41' to corner 1, 45.01' to corner 2.
- C - Boone County witness mark, flush 32.50' to corner 1, 46.88' to corner 2.



Kenneth E. Hedge
Kenneth E. Hedge, County Surveyor

James S. Swift
James S. Swift, IN LS 20200054
July 25, 2011

Eagle Township

| | |
|-------------------------|-------------------------|
| Section 35 T18N, R2E | Section 36 T18N, R2E |
| Section 2 T17N, R2E | Section 1 T17N, R2E |

SECTION CORNER RECORD

SE 600-1150

BOONE COUNTY SURVEYOR'S OFFICE

State Plane grid coordinates NAD83 (2011):

Corner 1: North: 1715450.16 East: 3186286.11 (U.S. survey feet)

Corner 2: North: 1715450.79 East: 3186296.82 (U.S. survey feet)

Corner 1: Harrison, 4" disk 'Section Corner' 4 inches above ground

Corner 2: 5/8" rebar with aluminum cap stamped,

'Boone County Surveyor' 2 inches above surrounding ground

Indiana tie card references:

IN02_T17NR2E01_04 IN02_T18NR2E36_76

A - Boone County witness mark, flush, 24.5' to corner 1, 13.9' to corner 2

B - S. side 30" diameter oak, 2' a.g. 15.9' to corner 1, 14.5' to corner 2

C - N.E. corner, wood shed 28.9' to corner 1, 37.6' to corner 2

D - S.E. corner, wood shed 24.8' to corner 1, 35.0' to corner 2

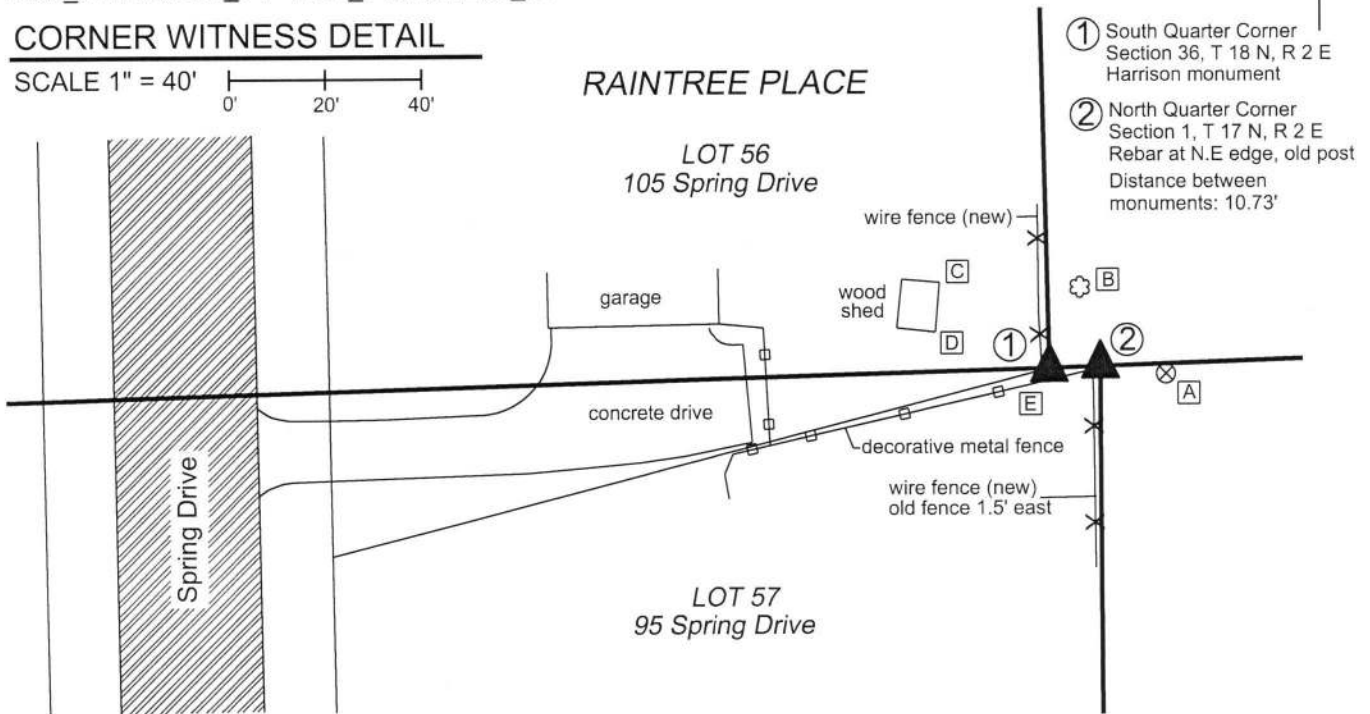
E - N.E. corner, wood post

2.4' to corner 1, 12.4' to corner 2



CORNER WITNESS DETAIL

SCALE 1" = 40'

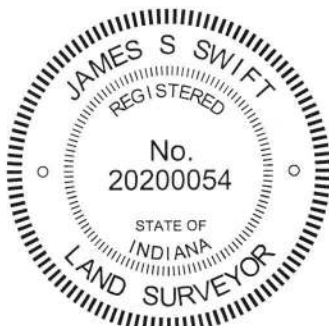


- ① South Quarter Corner Section 36, T 18 N, R 2 E Harrison monument
- ② North Quarter Corner Section 1, T 17 N, R 2 E Rebar at N.E. edge, old post Distance between monuments: 10.73'

The Harrison monument at Corner 1 was set in place of a 5/8 inch diameter rebar found. The rebar at Corner 2 was set in place of a 3/4 inch iron pipe found. No specific descriptions of these corners were found in the BCS Surveyor's Record beyond the establishment of Corner 1 as a wood post in 1819. Corner 2 is not an original corner of the PLSS.

The plat of the adjoining land to the west, Raintree Place, Section One-B, recorded in Plat Book 4, page 199 in the Office of the Boone County Recorder, shows both corners as "Iron Pin Found." The plat shows the two corners as being 10.72 feet apart. The monuments found at the respective corners fit well with the plat, as established with respect to centerline control monuments found at the intersection of Spring Drive and Forest Blvd and found in Forest Blvd, both north and south of said intersection. Excavation in the immediate vicinity of the corners revealed no further evidence beyond several small rocks. The pipe found at Corner 2 sits adjacent to the northeast corner of an ancient wood post at the terminus of an old fence to the south. The pipe itself was found in two pieces, having previously rusted in half. The section of the pipe remaining in the ground was found at 5 inches deep. The rebar at Corner 1 was found 10 inches deep in a compost pile. The rebar was found to be leaning to the west. It was observed that the point on the rebar at 12 inches below the top (22 inches deep) fit precisely with the relative position of the two iron pins shown on the plat and with the geometry of the plat per the aforementioned centerline control. The rebar and pipe were held as marking the respective corners. The pipe was replaced with a 36 inch piece of 5/8 inch rebar, set adjacent to the northeast corner of the post. The rebar was replaced with a Harrison monument in the same position as the point on the rebar 12 inches below the top.

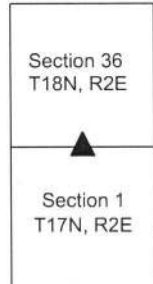
The average closing distance, per the original federal notes, for these corners is 16 links, or 10.56 feet.



Kenneth E. Hedge
 Kenneth E. Hedge, County Surveyor

James S. Swift
 James S. Swift, IN LS 20200054
 September 11, 2019

Eagle Twp



SECTION CORNER RECORD

SE 600-1200

BOONE COUNTY SURVEYOR'S OFFICE

State Plane grid coordinates NAD83 (NSRS 2007):
 North: 1715540.24 East: 3188959.12 (U.S. survey feet)

Type of monument: Harrison, 4" disk 'Section Corner'
 Depth: flush with adjacent road surface

Indiana tie card references:
 IN02_T17NR2E01_08
 IN02_T18NR2E36_80

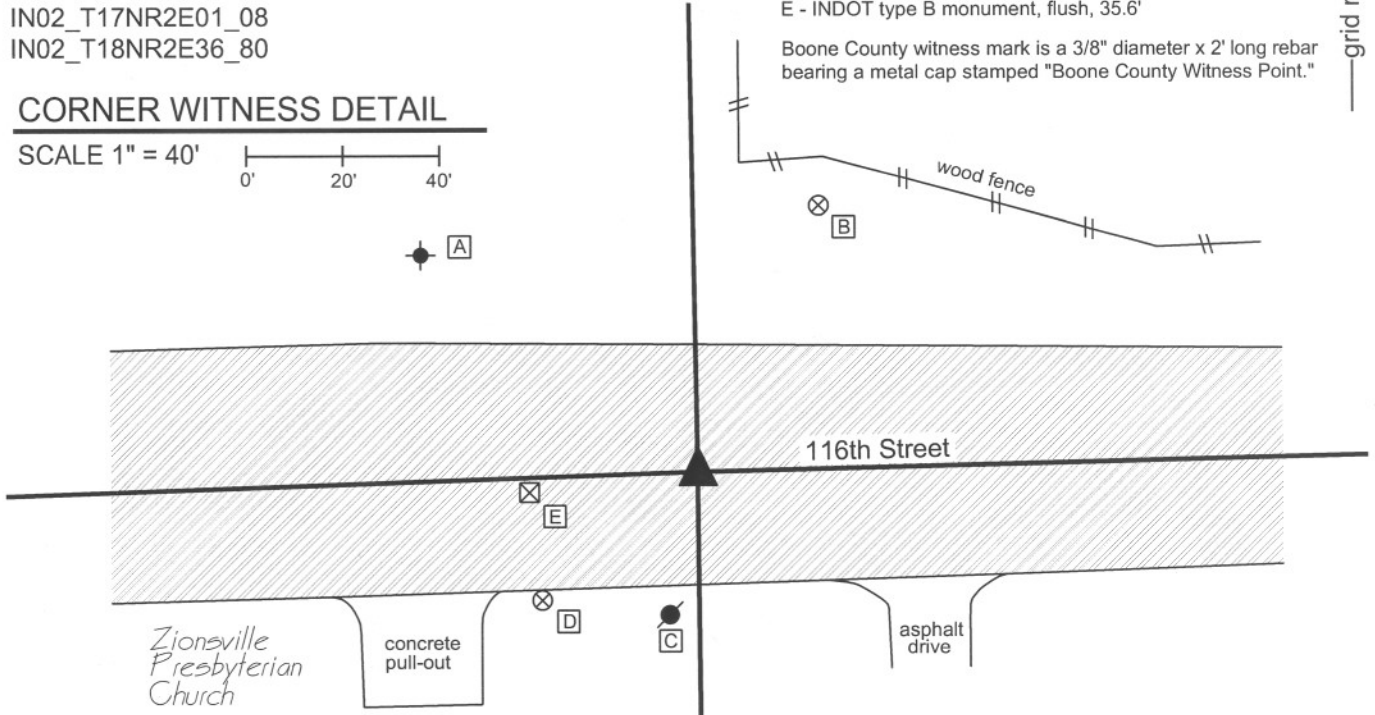
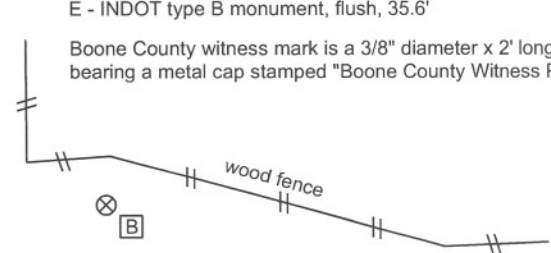
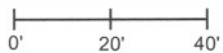
- A - Top S.S.E. bolt, fire hydrant, 74.75'
- B - Boone County witness mark, flush, 60.84'
- C - Mag nail set in N. side power pole, 2.0' a.g., 28.5'
- D - Boone County witness mark, flush, 42.27'
- E - INDOT type B monument, flush, 35.6'

Boone County witness mark is a 3/8" diameter x 2' long rebar bearing a metal cap stamped "Boone County Witness Point."

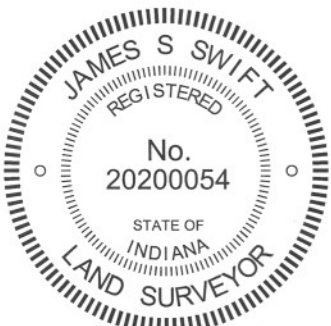


CORNER WITNESS DETAIL

SCALE 1" = 40'



The harrison monument was set in place of a mag spike found. No specific descriptions of this corner were found in the BCS Surveyor's Record. The corner is shown as a stone found on a tie card provided by the Hamilton County Surveyor's Office (HCSO), dated July 10, 1964, attributed to a crew of Paddock, Faye and shown on another tie card provided by HCSO dated July 10, 1984. The latter document states "Stone Found. RR Spike at Road Level. Stone Not Dug. Stone Found in 1964." Four distance ties are shown both tie cards. The descriptions of the four tie references on the 1984 tie card match those of the 1964 card both by description and graphical representation relative to the corner. However, the distance ties are not the same. If the references are the same, it appears that the railroad spike found may have been approximately 5 feet south of the stone found. With the information available, it is not provable that the tie references are the same, hence not provable that the corner position shifted. It is considered likely that the corner position shifted, but that has not been proved. At some point later an aluminum monument was set, presumably in the place of the railroad spike shown on the 1984 tie card. The specific source of the aluminum monument is not known. A tie card provided by the HCSO dated August 2007 shows a harrison monument set at the surface. This document appears to correlate with a survey by the Schneider Corporation, dated June 17, 2003, job no. 1299.004, which shows the corner as an "Aluminum County Surveyor's Monument Found, 0.5' below surface in concrete, Harrison monument set, Hamilton County ties call for a railroad spike - not found." Per conversation with Mr. Jeff Powell, formerly of the HCSO, Schneider set the harrison monument in cooperation with the HCSO. Subsequent to the harrison being set, the roadway was reconstructed in this area, the monument was destroyed and no monument was set in place of the harrison monument. In 2009, the position of the harrison monument was reconstructed relative to other monumentation shown on private surveys, including the aforementioned Schneider Survey and numerous other surveys which are recorded in the Office of the Boone County Surveyor. Prior to establishing the monument, a mag spike was set by an unknown source at the position calculated from the prior surveys. Uncertainties of up to 0.2 foot may be attributed to the calculated position, relative to other monumentation, though the found mag spike was within 0.05 of a foot of the position independently calculated by this office. The mag spike was removed and replaced with a harrison monument on August 5, 2009.



Kenneth E. Hedge
 Kenneth E. Hedge, County Surveyor

James S. Swift
 James S. Swift, IN LS 20200054
 March 30, 2012

Eagle Twp | Clay Twp
 Boone Cty | Hamilton Cty

| | |
|-------------------------|-------------------------|
| Section 36 T18N, R2E | Section 31 T18N, R3E |
| Section 1 T17N, R2E | Section 6 T17N, R3E |