

# SECTION CORNER RECORD

NW 600-800

## BOONE COUNTY SURVEYOR'S OFFICE

State Plane grid coordinates NAD83 (2011):

North: 1777375.70 East: 3082556.81 (U.S. survey feet)

Type of monument: Harrison, 4" disk 'Section Corner'

Depth: Flush with adjacent ground

Indiana tie card references:

IN02\_T20NR2W34\_80 IN02\_T20NR2W35\_72

IN02\_T19NR2W03\_08 IN02\_T19NR2W02\_00

### CORNER WITNESS DETAIL

SCALE 1" = 50'

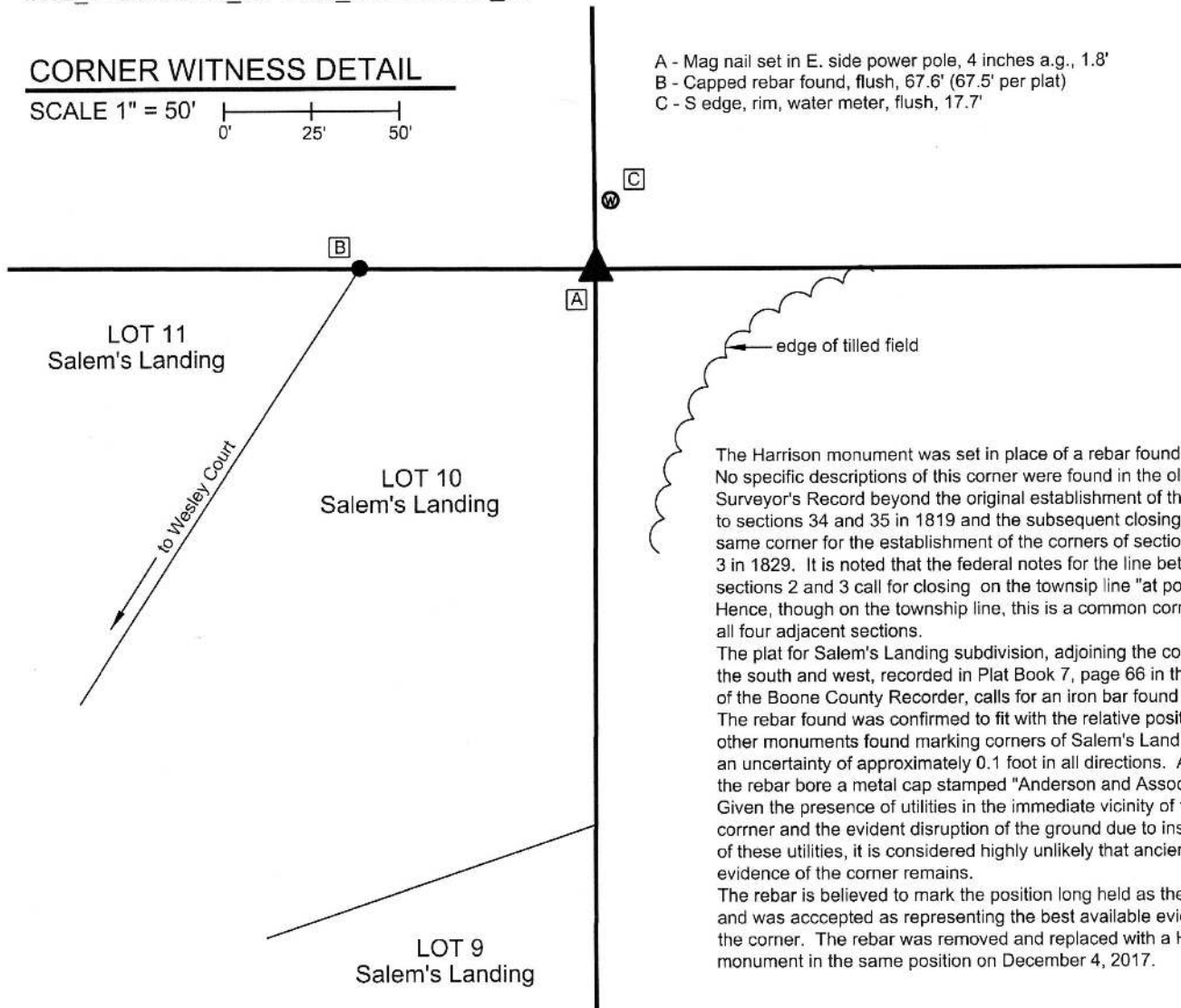
0' 25' 50'

A - Mag nail set in E. side power pole, 4 inches a.g., 1.8'

B - Capped rebar found, flush, 67.6' (67.5' per plat)

C - S edge, rim, water meter, flush, 17.7'

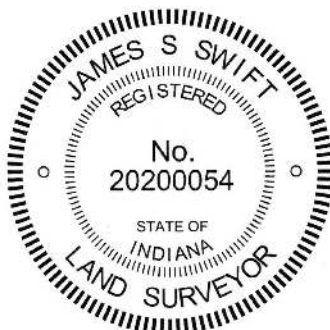
grid north



The Harrison monument was set in place of a rebar found. No specific descriptions of this corner were found in the old BCS Surveyor's Record beyond the original establishment of the corner to sections 34 and 35 in 1819 and the subsequent closing on the same corner for the establishment of the corners of sections 2 and 3 in 1829. It is noted that the federal notes for the line between sections 2 and 3 call for closing on the township line "at post." Hence, though on the township line, this is a common corner for all four adjacent sections.

The plat for Salem's Landing subdivision, adjoining the corner to the south and west, recorded in Plat Book 7, page 66 in the Office of the Boone County Recorder, calls for an iron bar found in place. The rebar found was confirmed to fit with the relative positions of other monuments found marking corners of Salem's Landing, with an uncertainty of approximately 0.1 foot in all directions. As found, the rebar bore a metal cap stamped "Anderson and Associates." Given the presence of utilities in the immediate vicinity of the corner and the evident disruption of the ground due to installation of these utilities, it is considered highly unlikely that ancient evidence of the corner remains.

The rebar is believed to mark the position long held as the corner and was accepted as representing the best available evidence of the corner. The rebar was removed and replaced with a Harrison monument in the same position on December 4, 2017.



*Kenneth E. Hedge*  
Kenneth E. Hedge, County Surveyor

*James S. Swift*  
James S. Swift, IN LS 20200054  
January 17, 2018

Sugar Creek Twp

|                         |                         |
|-------------------------|-------------------------|
| Section 34<br>T20N, R2W | Section 35<br>T20N, R2W |
| Section 3<br>T19N, R2W  | Section 2<br>T19N, R2W  |

# SECTION CORNER RECORD

NW 650-725

## BOONE COUNTY SURVEYOR'S OFFICE

State Plane grid coordinates NAD83 (CORS96):

North: 1779984.32 East: 3086520.22 (U.S. survey feet)

Type of monument: 5/8 inch diameter rebar with

metal cap stamed 'Boone County Surveyor'

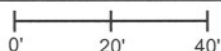
Depth: flush with adjacent road surface

Indiana tie card references:

IN02\_T20NR2W35\_42

### CORNER WITNESS DETAIL

SCALE 1" = 40'



A - Top, N. bolt, firehydrant, 49.02'

B - Boone County witness mark, flush, 44.52'

C - N.W. corner, top section, Moliere grave stone, 42.24'

D - S.W. corner, base section, John Alford grave stone, 39.28'

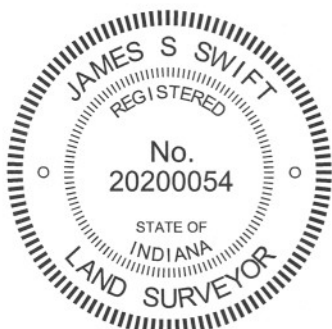
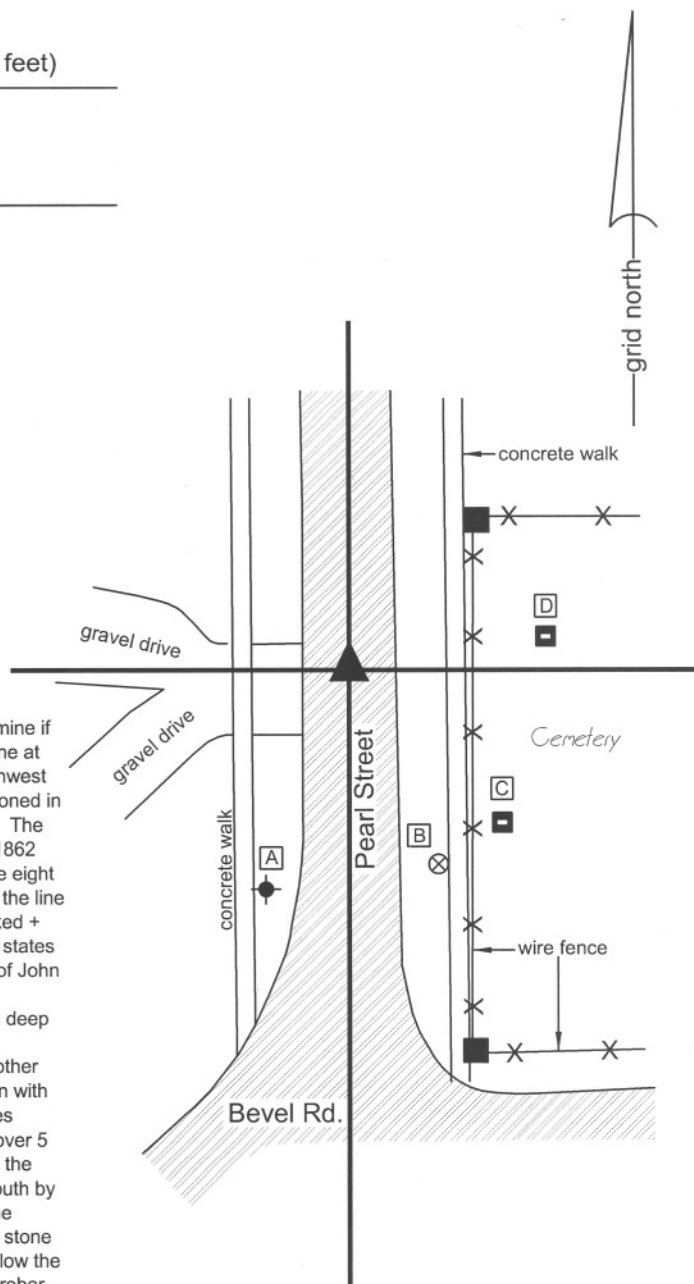
Boone County witness mark is a 3/8" diameter x 2' long rebar bearing a metal cap stamped "Boone County Witness Point."

The capped rebar was set directly over a stone found.

This corner was excavated at the request of a private surveyor to determine if the iron pipe, visible in a hole in the road, was over or near a record stone at the previously monumented, long accepted northeast corner of the northwest quarter of the southeast quarter of section 35. The corner is first mentioned in the BCS Surveyor's Record as "W. Oak (stone set)" in December 1854. The W. Oak most likely references a bearing tree. A record of October 16, 1862 states "1/8 Sect. Corner is in road." A record of July 8, 1867 states "The eight Sect. corner. Established from a stake driven in a former survey where the line was run. Set Rock 15,12, 5 1/2 marked +. One under it 7,4, 3 1/2 marked + (is split). Four small rocks around it." A record of September 7-8, 1891 states "Center of E 1/2 of Sect. found after much digging. SW corner of base of John A. Alford's monument bears N82 1/2° E, 60 [links]."

Prior to excavation, a one inch diameter iron pipe was found at 2 inches deep in a hole in the asphalt. The pipe was at 39.3 feet (59.5 links) from the southwest corner of the base of a grave stone marked John Alford. Another John Alford stone exists nearby, which represented part of the confusion with the corner. The pipe was removed and the stone was found at 10 inches deep. The cross-section of the road at this point is 4 inches of asphalt over 5 inches of concrete, and 1 inch of fill over the stone. The stone matched the description of the stone from the 1867 record, being 12 inches North-South by 5 1/2 inches E-W with an etched "+" clearly visible on the east side of the stone, 2 inches down from the top of the stone. The top 6 inches of the stone were exposed and the rock remained entirely stable in the clay layer below the road, indicating more depth.. An 8 inch long piece of 5/8 inch diameter rebar was placed directly over the top, center of the stone.

This corner is not an original federal corner, but has been held for surveys in this part of Thorntown for many years. This position for the corner appears to have been accepted since at least 1862.



*Kenneth E. Hedge*  
Kenneth E. Hedge, County Surveyor

*James S. Swift*  
James S. Swift, IN LS 20200054  
March 30, 2012

Sugar Creek Township

Section 35  
T20N, R2W

|        |        |
|--------|--------|
| NW 1/4 | NE 1/4 |
| SW 1/4 | SE 1/4 |

## PHOTOGRAPHIC DOCUMENTATION

Date of photography: May 5, 2009

The iron pipe, long held as marking the corner.



View from the west, looking across the stone and east into the cemetery. Note the John Alford monument, northeast of the stone.



For details and documentation, refer to related sheet "Section Corner Record."

The stone described in the 1867 record, found under the iron pipe.



View of the stone from above and east, showing the etched mark on the east side of the stone.



The John Alford monument, dated November 1887, 4 years prior to the 1891 record which references it.

