

SECTION CORNER RECORD

NE 650-1000

BOONE COUNTY SURVEYOR'S OFFICE

State Plane grid coordinates NAD83 (CORS96):

North: 1781316.19 East: 3177384.30 (U.S. survey feet)

Type of monument: Harrison, 4" disk 'Section Corner'

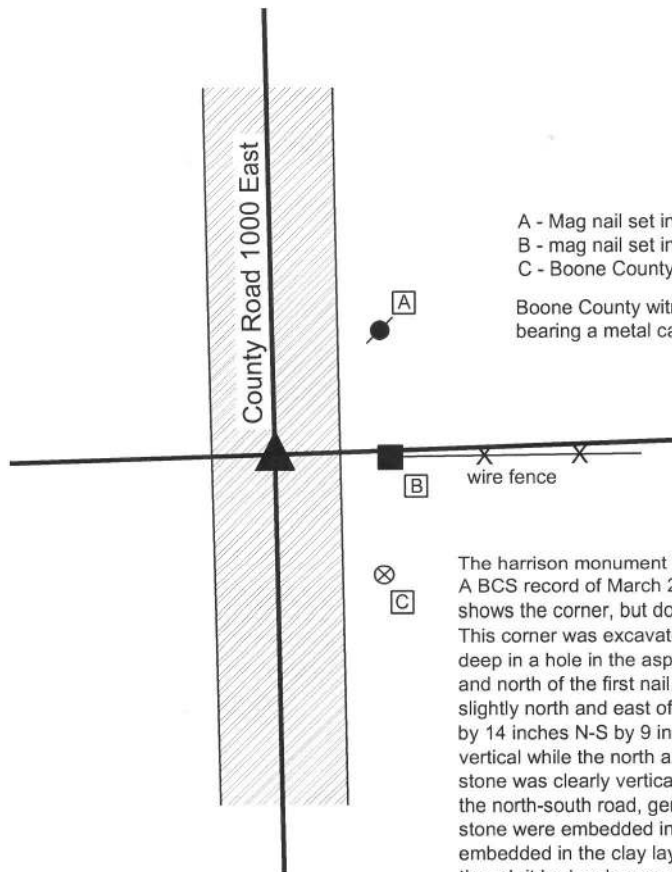
Depth: One inch below adjacent road surface

Indiana tie card references:

IN02_T20NR2E34_44 IN02_T20NR2E35_36

CORNER WITNESS DETAIL

SCALE 1" = 30'

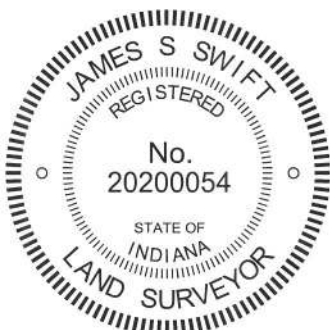


- A - Mag nail set in S.W. side power pole, 2' a.g., 23.94'
- B - mag nail set in S.W. side wood end post, 2' a.g., 17.66'
- C - Boone County witness mark, flush, 25.42'

Boone County witness mark is a 3/8" diameter x 2' long rebar bearing a metal cap stamped "Boone County Witness Point."



The harrison monument was set in place of the top, high point of a stone found. A BCS record of March 25, 1853 states "Stone Set." A BCS tie card dated January 18, 1994 shows the corner, but does not specify a monument at the corner. This corner was excavated on July 24, 2013. Prior to excavation a nail was found at 2 inches deep in a hole in the asphalt roadway. Excavation revealed another nail found slightly below and north of the first nail. Further excavation revealed a stone found at 2 inches deep, slightly north and east of the nails. Full excavation of the stone revealed it to be 19 inches tall by 14 inches N-S by 9 inches E-W. The east and west sides of the stone were flat and vertical while the north and south sides were more sloping. The overall orientation of the stone was clearly vertical and oriented in cardinal directions. The stone was in the center of the north-south road, generally in line with the fence to the east. The top 8 inches of the stone were embedded in the asphalt roadway. The bottom 9 inches of the stone were embedded in the clay layer below the road bed. No specific marks were found on the stone, though it had a clear and distinct high point. The stone did not appear to be disturbed. The stone was removed and a harrison monument was set in place of the top, high point of the stone. The nails, removed during excavation had been approximately 0.3 foot west and 0.9 foot south of the top, high point of the stone. This corner was originally established as a wood post in 1821.

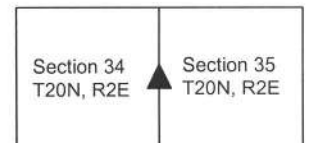


Kenneth E. Hedge
Kenneth E. Hedge, County Surveyor

James S. Swift
James S. Swift, IN LS 20200054

February 5, 2015

Marion Township



PHOTOGRAPHIC DOCUMENTATION

Date of photography: July 24, 2013

View of the stone as first exposed.



The stone, removed from the road.



View of the stone from the north, looking south along C.R. 1000 East.



View of the stone from the east, looking down the fence line to the east.



For details and documentation, refer to related sheet "Section Corner Record."

SECTION CORNER RECORD

NE 650-1100

BOONE COUNTY SURVEYOR'S OFFICE

State Plane grid coordinates NAD83 (CORS96):

North: 1781493.14 East: 3182688.31 (U.S. survey feet)

Type of monument: Harrison, 4" disk 'Section Corner'

Depth: six inches below adjacent gravel road surface

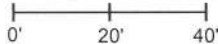
Indiana tie card references:

IN02_T20NR2E35_44

IN02_T20NR2E36_36

CORNER WITNESS DETAIL

SCALE 1" = 40'



A - Boone County witness mark, flush, 41.75'

B - Mag nail set in W. side power pole, 2' a.g., 67.31'

C - Mag nail set in W. side power pole, 2' a.g., 14.89'

Boone County witness mark is a 3/8" diameter x 2' long rebar bearing a metal cap stamped "Boone County Witness Point."

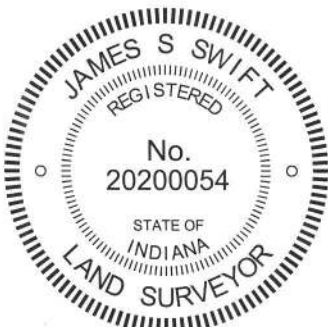


The harrison monument was set in place of a stone found.

A BCS record of February 21-22, 1872 states "found rock at corner (saw one stump.)" A BCS tie card dated August 11, 1974 states "no stone found."

This corner was excavated on July 17, 2013. Prior to excavation a rebar with a red cap (markings illegible) was found at 3 inches deep in the gravel road. No ties remain from the 1974 tie card and the source of the capped rebar is not known. Excavation revealed a stone found at 4 inches deep. The stone was removed, measured and found to be 21 inches tall by 11 inches N-S by 7 inches E-W. No specific marks were found on the stone, though it had a clear high point and fit the characteristics of other corner stones found marking corners throughout the county, being vertical and embedded in the clay layer below the road. The stone was accepted as being the best available evidence of the corner. The harrison monument was set in place of the high point of the stone. The rebar, removed during excavation, had been 0.7 of a foot south of the top, high point of the stone.

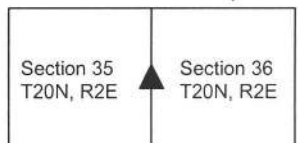
This corner was originally established as a wood post in 1821.



Kenneth E. Hedge
 Kenneth E. Hedge, County Surveyor

James S. Swift
 James S. Swift, IN LS 20200054
 February 5, 2015

Marion Township



PHOTOGRAPHIC DOCUMENTATION

Date of photography: July 17, 2013

View of the stone as first exposed.



The stone removed from the road.



View of the stone from the south, looking north along County Road 1100 East.



View of the stone from the west, looking east along County Road 1100 East.



For details and documentation, refer to related sheet "Section Corner Record."

SECTION CORNER RECORD

NE 700-1000

BOONE COUNTY SURVEYOR'S OFFICE

State Plane grid coordinates NAD83 (CORS96):
North: 1783963.61 East: 3177327.06 (U.S. survey feet)

Type of monument: Harrison, 4" disk 'Section Corner'
Depth: One inch below adjacent road surface

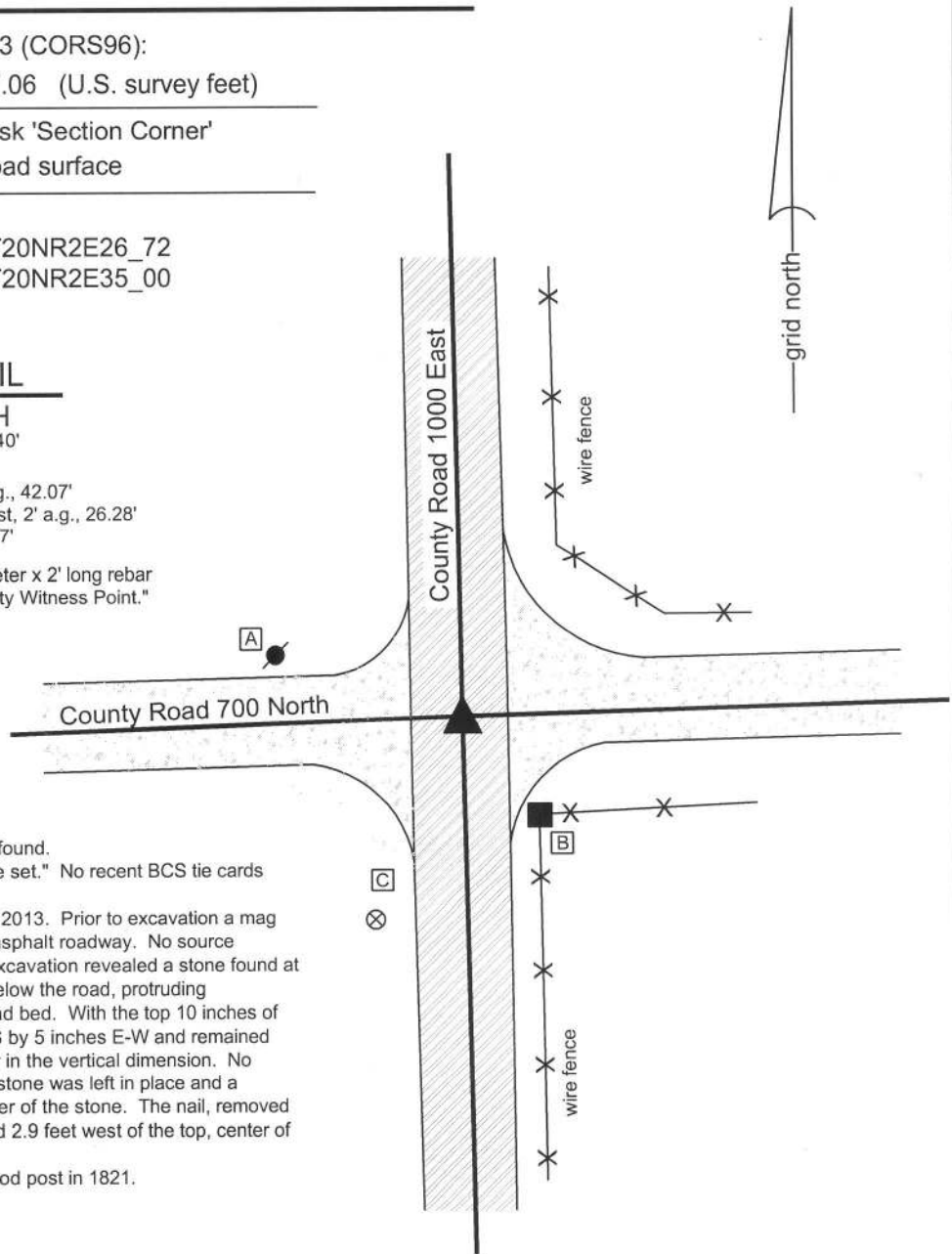
Indiana tie card references:
IN02_T20NR2E12_80 IN02_T20NR2E26_72
IN02_T20NR2E34_08 IN02_T20NR2E35_00

CORNER WITNESS DETAIL

SCALE 1" = 40'
0' 20' 40'

- A - Mag nail set in S. side power pole, 2' a.g., 42.07'
- B - Mag nail set in W. side, wood corner post, 2' a.g., 26.28'
- C - Boone County witness mark, flush, 46.97'

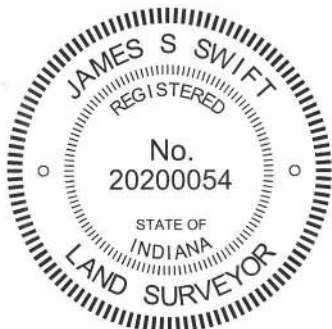
Boone County witness mark is a 3/8" diameter x 2' long rebar bearing a metal cap stamped "Boone County Witness Point."



The harrison monument was set over a stone found. A BCS record of March 25, 1853 states "Stone set." No recent BCS tie cards were found referencing this corner.

Excavation at this corner occurred on July 25, 2013. Prior to excavation a mag nail was found at 1 inch deep in a hole in the asphalt roadway. No source documentation was found for this mag nail. Excavation revealed a stone found at 20 inches deep, embedded in the clay layer below the road, protruding approximately 1 inch into the bottom of the road bed. With the top 10 inches of the stone exposed, it measured 12 inches N-S by 5 inches E-W and remained stable in the clay, indicating that it is yet larger in the vertical dimension. No specific marks were found on the stone. The stone was left in place and a harrison monument was set over the top, center of the stone. The nail, removed during excavation, had been 0.6 foot north and 2.9 feet west of the top, center of the stone.

This corner was originally established as a wood post in 1821.



Kenneth E. Hedge
Kenneth E. Hedge, County Surveyor

James S. Swift
James S. Swift, IN LS 20200054
February 5, 2015

Marion Township

Section 27 T20N, R2E	Section 26 T20N, R2E
Section 34 T20N, R2E	Section 35 T20N, R2E

PHOTOGRAPHIC DOCUMENTATION

Date of photography: July 25, 2013

View of the stone from above and south.



View of the stone from above.



View from above the stone,
looking south along County Road 1000 East..



View from above the stone,
looking west along County Road 700 North.



For details and documentation, refer to related sheet "Section Corner Record."

SECTION CORNER RECORD

BOONE COUNTY SURVEYOR'S OFFICE

NE 700-1050

State Plane grid coordinates NAD83 (CORS96):

North: 1784041.96 East: 3179985.07 (U.S. survey feet)

Type of monument: Harrison, 4" disk 'Section Corner'

Depth: six inches below adjacent gravel road surface

Indiana tie card references:

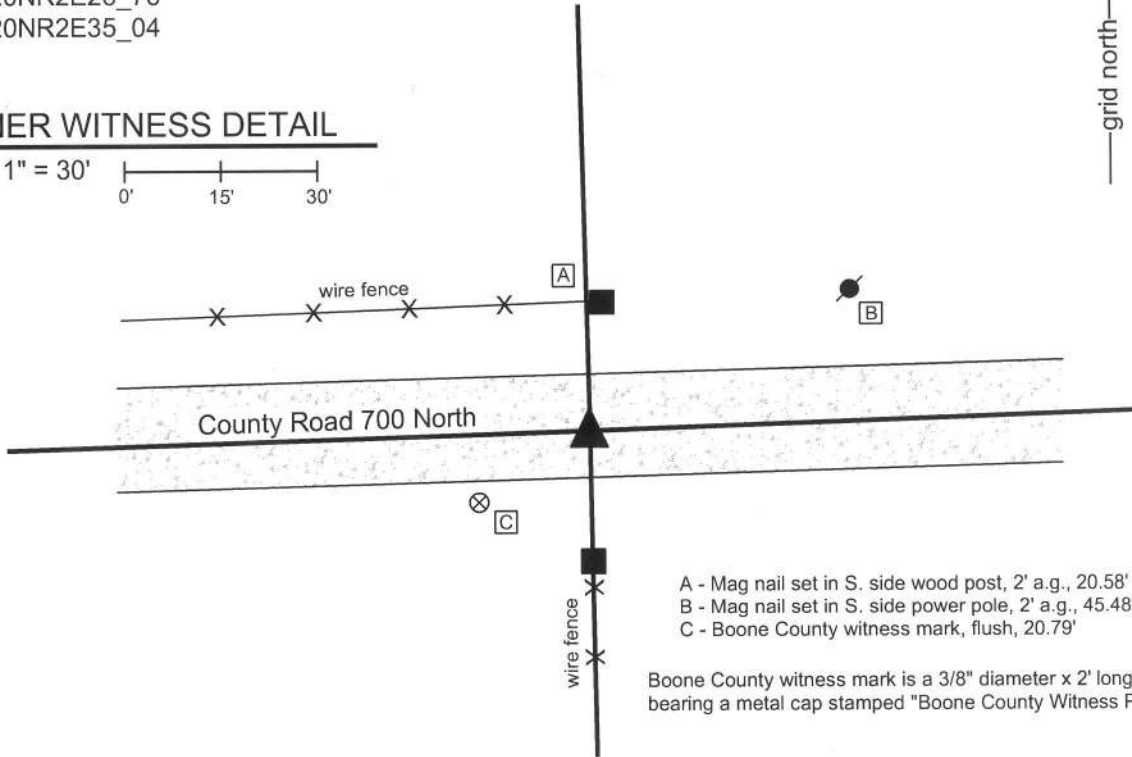
IN02_T20NR2E26_76

IN02_T20NR2E35_04



CORNER WITNESS DETAIL

SCALE 1" = 30'

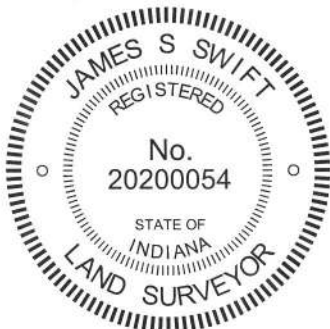


- A - Mag nail set in S. side wood post, 2' a.g., 20.58'
- B - Mag nail set in S. side power pole, 2' a.g., 45.48'
- C - Boone County witness mark, flush, 20.79'

Boone County witness mark is a 3/8" diameter x 2' long rebar bearing a metal cap stamped "Boone County Witness Point."

The harrison monument was set in place of a railroad spike found.

No specific descriptions of this corner were found in the old BCS Surveyor's Record. A BCS tie card dated August 11, 1974 states "no stone found." Excavation at this corner occurred on June 12, 2013. Prior to excavation, a railroad spike was found at 6 inches deep at a position which generally agrees with the distance ties shown on the 1974 tie card. Excavation of an area extending 5 feet north, 5 feet east, 3.5 feet south and 3.5 feet west of the railroad spike revealed no further evidence of the corner. Excavation was performed to a depth of 28-30 inches deep. The cross section of this part of the road was found to be less uniform than the road bed found at most other corners, as there is a 2 inch thick clay layer at 16 inches deep, under which is a fine, sandy gravel material. The base clay layer begins at approximately 2 feet deep. The railroad spike fits with the distance ties on the 1974 tie card and also fits with local evidence, being in the center of the road and approximately midway between the end posts on each side of the road. The spike was in line with the post to the south and slightly west of the post to the north. The railroad spike was removed during excavation, but the position of the railroad spike as found prior to excavation was held as marking the corner. A harrison monument was set in this position. This corner was originally established as a wood post in 1821.



Kenneth E. Hedge
 Kenneth E. Hedge, County Surveyor

James S. Swift
 James S. Swift, IN LS 20200054

February 5, 2014

Marion Township



SECTION CORNER RECORD

NE 700-1100

BOONE COUNTY SURVEYOR'S OFFICE

State Plane grid coordinates NAD83 (CORS96):
North: 1784130.04 East: 3182640.01 (U.S. survey feet)

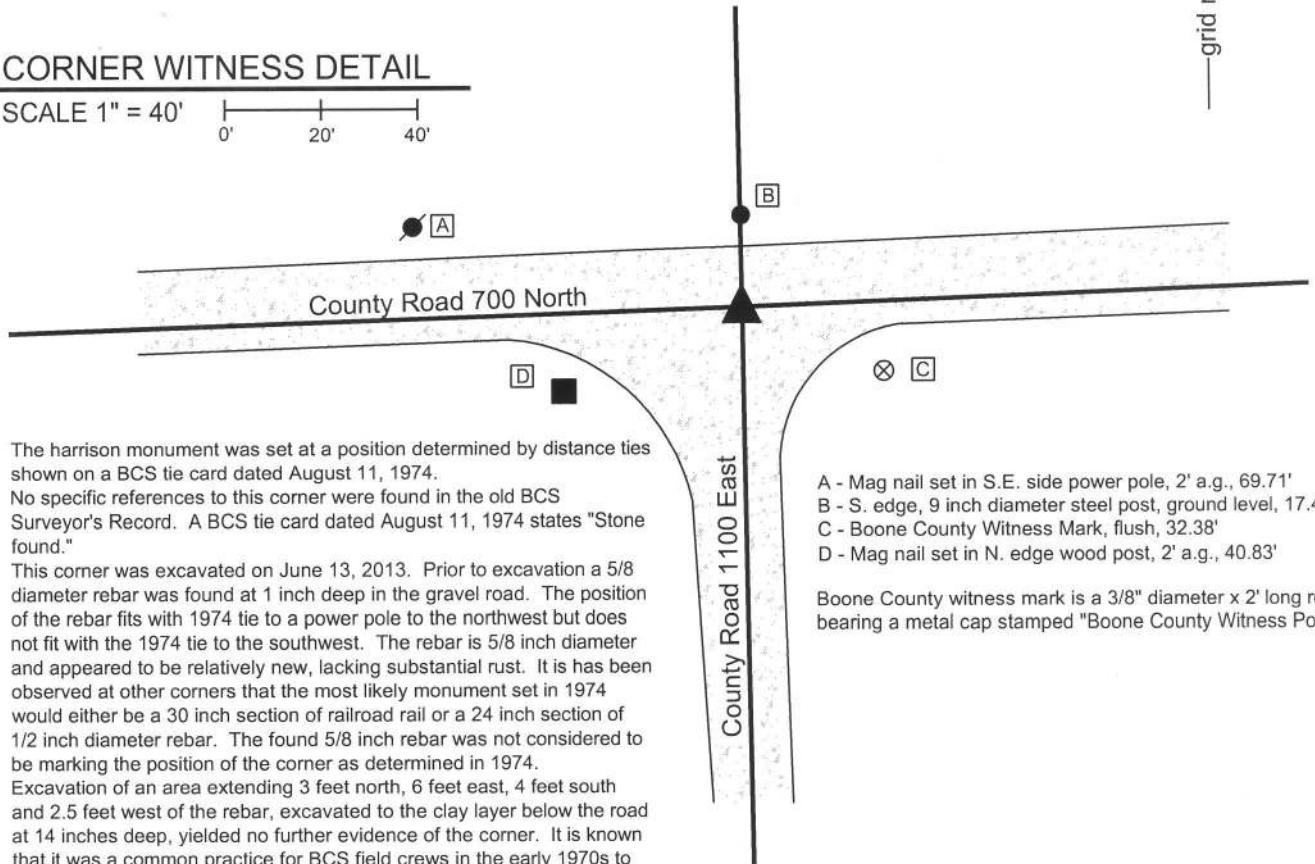
Type of monument: Harrison, 4" disk 'Section Corner'
Depth: six inches below adjacent gravel road surface

Indiana tie card references:
IN02_T20NR2E26_80 IN02_T20NR2E25_72
IN02_T20NR2E35_08 IN02_T20NR2E36_00



CORNER WITNESS DETAIL

SCALE 1" = 40'



The harrison monument was set at a position determined by distance ties shown on a BCS tie card dated August 11, 1974. No specific references to this corner were found in the old BCS Surveyor's Record. A BCS tie card dated August 11, 1974 states "Stone found."

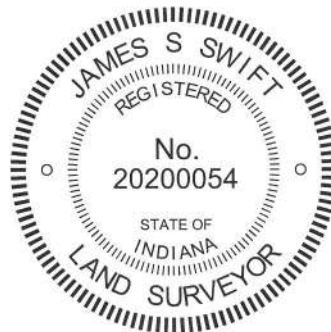
This corner was excavated on June 13, 2013. Prior to excavation a 5/8 diameter rebar was found at 1 inch deep in the gravel road. The position of the rebar fits with 1974 tie to a power pole to the northwest but does not fit with the 1974 tie to the southwest. The rebar is 5/8 inch diameter and appeared to be relatively new, lacking substantial rust. It is has been observed at other corners that the most likely monument set in 1974 would either be a 30 inch section of railroad rail or a 24 inch section of 1/2 inch diameter rebar. The found 5/8 inch rebar was not considered to be marking the position of the corner as determined in 1974.

Excavation of an area extending 3 feet north, 6 feet east, 4 feet south and 2.5 feet west of the rebar, excavated to the clay layer below the road at 14 inches deep, yielded no further evidence of the corner. It is known that it was a common practice for BCS field crews in the early 1970s to remove stones, if found, and replace them with either a railroad rail of a 1/2 inch diameter rebar. It is reasonable to expect that the stone found in 1974 was removed and also reasonable to expect that the monument set in its place may have been removed by a road grader at some point in the intervening 39 years. The position of the corner determined in 1974 was reconstructed using the two distance remaining distance ties, holding the southeast edge of the power pole and the northeast corner of the wood post, as graphically demonstrated on the 1974 tie card. A harrison monument was set at this position. The 5/8 inch diameter rebar, removed during excavation, had been 1 foot north and 2 feet east of this position.

This corner was originally established as a wood post in 1821.

- A - Mag nail set in S.E. side power pole, 2' a.g., 69.71'
- B - S. edge, 9 inch diameter steel post, ground level, 17.43'
- C - Boone County Witness Mark, flush, 32.38'
- D - Mag nail set in N. edge wood post, 2' a.g., 40.83'

Boone County witness mark is a 3/8" diameter x 2' long rebar bearing a metal cap stamped "Boone County Witness Point."



Marion Township

Section 26 T20N, R2E	Section 25 T20N, R2E
Section 35 T20N, R2E	Section 36 T20N, R2E

Kenneth E. Hedge, County Surveyor

James S. Swift, IN LS 20200054

February 5, 2015