

# SECTION CORNER RECORD

# SE 500-1000

## BOONE COUNTY SURVEYOR'S OFFICE

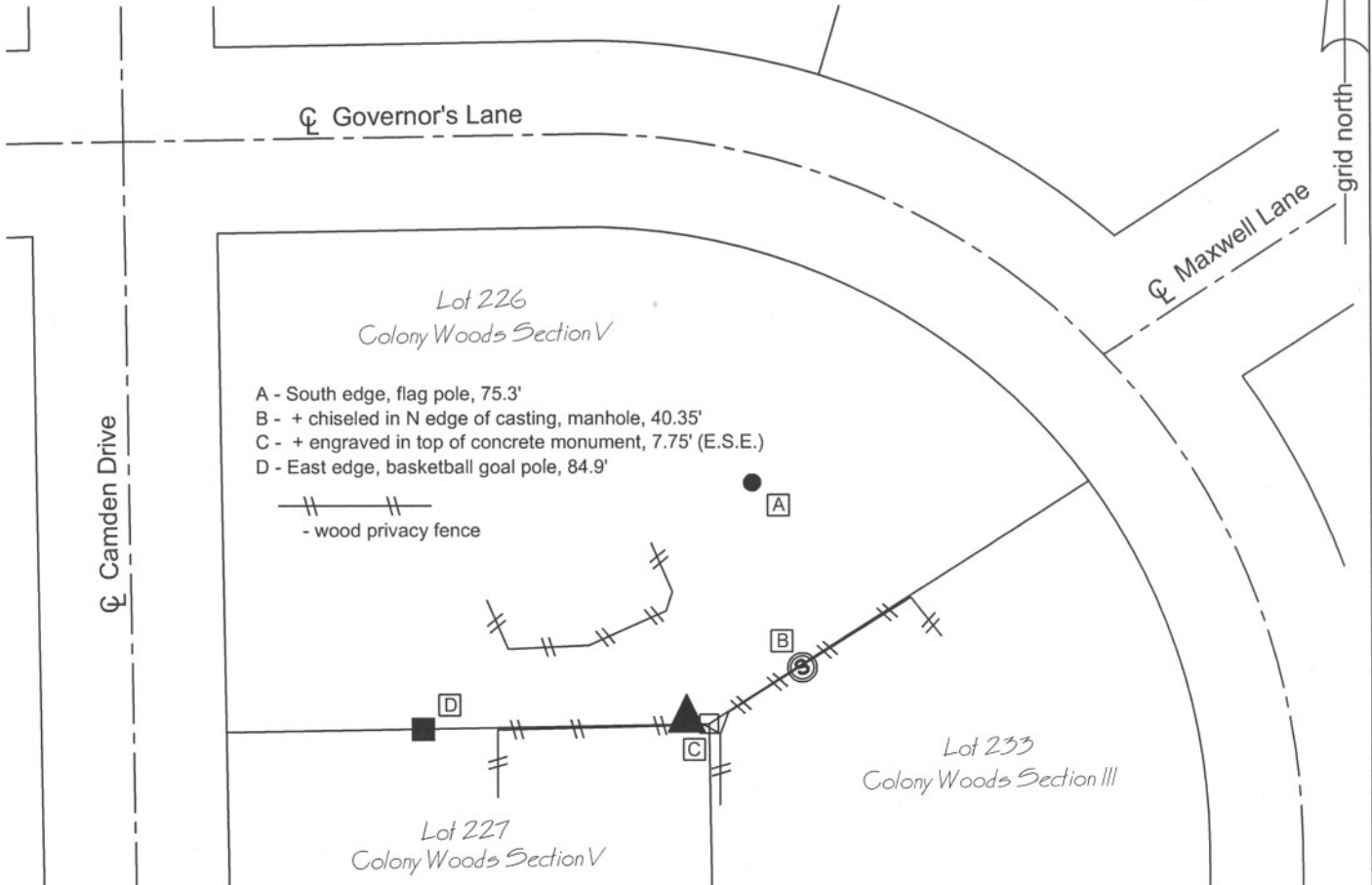
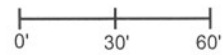
State Plane grid coordinates NAD83 (NSRS 2007):  
 North: 1720489.92 East: 3178195.42 (U.S. survey feet)

Indiana tie card references:  
 IN02\_T18NR2E26\_72 IN02\_T18NR2E27\_80  
 IN02\_T18NR2E34\_08 IN02\_T18NR2E35\_00

Type of monument: Harrison, 4" disk 'Section Corner'  
 Depth: 4 inches above adjacent grade in concrete pillar

### CORNER WITNESS DETAIL

SCALE 1" = 60'



The Harrison monument was set over a railroad rail found. No entries were found for this corner in the BCS stone record, nor were any BCS tie cards found. This corner falls within lot 227 of Colony Woods subdivision, Section V (Plat Book 6, page 22). The location of the corner relative to the platted lots is more clearly shown on the plat of Colony Woods subdivision, Section III (Plat Book 6, page 9). Most recorded surveys referencing this corner state that the location was reconstructed from the geometry of the plats. A railroad rail on end was found, approximately 4 inches deep, at the location shown on the plat. The position of the railroad rail fits precisely with the plat geometry as reconstructed from centerline control monuments in Governor's Lane. It is known that railroad rails were set by this office and by Anderson and Associates Surveyors in the late 1960s and early 1970s. The plats were recorded in the late 1970s. No other evidence of the section corner was found. The railroad rail was held as marking the corner and the Harrison monument was set directly over the top of the center of the neck of the rail. This corner was originally established as a wood post in July, 1821.

Eagle Township



*Kenneth E. Hedge*  
 Kenneth E. Hedge, County Surveyor

*James S. Swift*  
 James S. Swift, IN LS 20200054

March 11, 2009

Section 27 T18N, R2E	Section 26 T18N, R2E
Section 34 T18N, R2E	Section 35 T18N, R2E

PHOTOGRAPHIC DOCUMENTATION

Date of photography: October 9, 2008

View of railroad rail (section corner) and concrete monument (subdivision corner) from northwest.



For details and documentation, refer to related sheet "Section Corner Record."

# SECTION CORNER RECORD

SE 500-1100

## BOONE COUNTY SURVEYOR'S OFFICE

State Plane grid coordinates NAD83 (NSRS 2007):

North: 1720649.93 East: 3183531.59 (U.S. survey feet)

Type of monument: Harrison, 4" disk 'Section Corner'

Depth: One inch below adjacent road surface

Indiana tie card references:

IN02\_T18NR2E25\_72 IN02\_T18NR2E26\_80

IN02\_T18NR2E35\_08 IN02\_T18NR2E36\_00

### CORNER WITNESS DETAIL

SCALE 1" = 40'



- A - Mag nail set in E. side power pole, 2.0' a.g., 15.4'
- B - Boone County witness mark, flush, 39.17'
- C - Mag nail set in N. side power pole, 2.0' a.g., 47.0'

Boone County witness mark is a 3/8" diameter x 2' long rebar bearing a metal cap stamped "Boone County Witness Point."

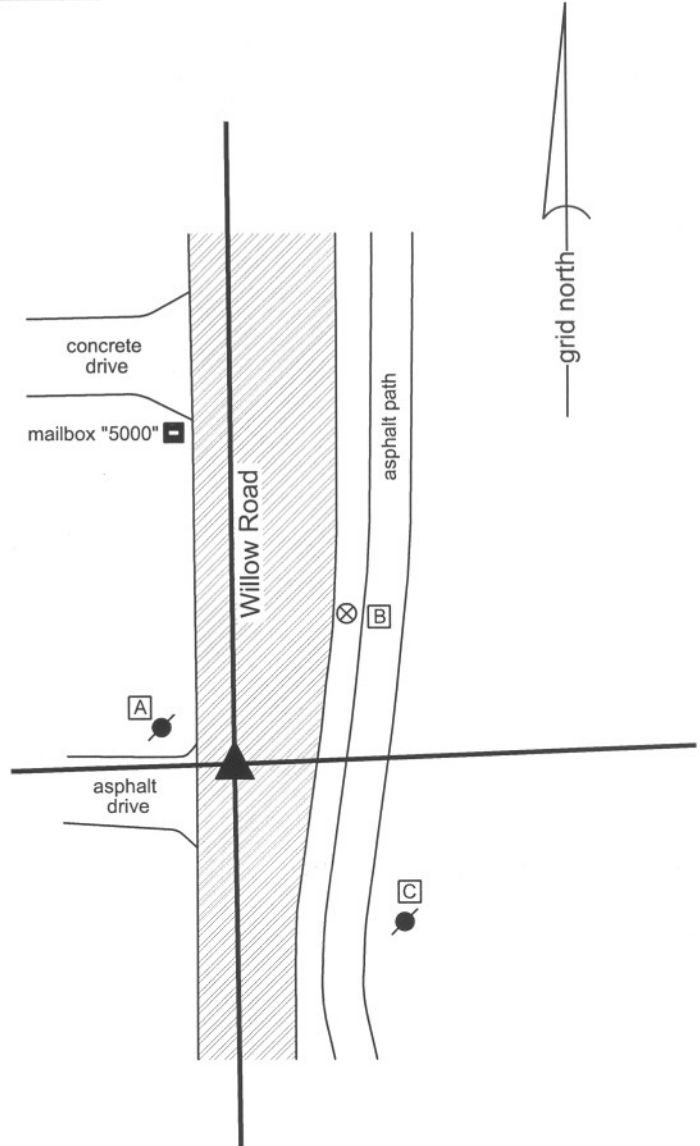
The harrison monument was set in place of a railroad spike and iron pipe found.

No specific descriptions of this corner were found in the BCS Surveyor's Record, but it is mentioned as the terminal points for several measurements in 1834 and another measurement in 1859. A BCS tie card dated April 15, 1991 shows the corner as a railroad spike found. A BCS reference sheet dated June 15, 1989 shows the same. All known surveys and plats in this vicinity have held the railroad spike as the.

This corner was monumented on July 30, 2009. Significant excavation was not performed as utility markings clearly indicate that a water main runs along the center of the Willow Road, adjacent to and immediately east of the corner. It is considered highly likely that any corner stone which may have existed at this corner would have been obliterated during the installation of the water main.

Prior to monumentation, a railroad spike was found in a hole in the asphalt approximately 3 inches below grade. A 1 inch diameter iron pipe was found directly below the railroad spike. No other evidence was found. The harrison monument was set in place of the railroad spike and iron pipe.

This corner was originally established as a wood post in July, 1821.



*Kenneth E. Hedge*  
 Kenneth E. Hedge, County Surveyor

*James S. Swift*  
 James S. Swift, IN LS 20200054  
 July 14, 2010

Eagle Township

Section 26 T18N, R2E	Section 25 T18N, R2E
Section 35 T18N, R2E	Section 36 T18N, R2E

# SECTION CORNER RECORD

# SE 550-1000

## BOONE COUNTY SURVEYOR'S OFFICE

State Plane grid coordinates NAD83 (NSRS 2007):

North: 1717859.39 East: 3178204.91 (U.S. survey feet)

Type of monument: 5/8" rebar with metal cap stamped "Boone County Surveyor"

Depth: flush with adjoining ground

Indiana tie card references:

IN02\_T18NR2E34\_44

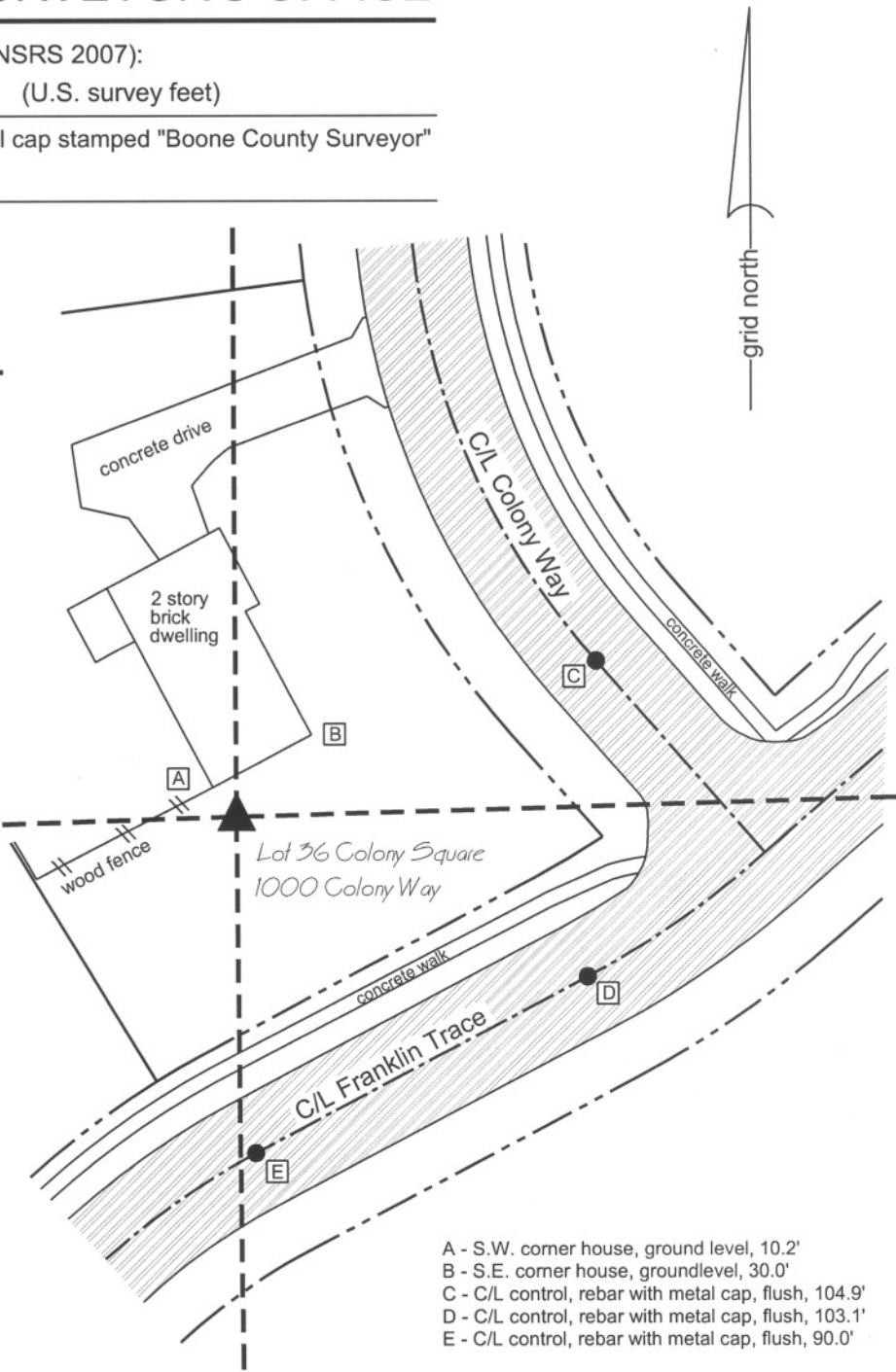
IN02\_T18NR2E35\_36

### CORNER WITNESS DETAIL

SCALE 1" = 50'



The rebar was set in a calculated position. A BCS record of July 22, 1873 states "Found from stump of Beech." This record makes no mention of what monument may have been set at the corner. A BCS reference sheet dated June 15, 1989 also shows no information about monument but states "See Colony Woods Subdivision Plat, Section V." This plat, recorded in Plat Book 6, page 22 shows the corner and references its position with respect to the plat. The corner actually falls within Colony Square, Section 1, which is recorded in Plat Book 6, page 94 but this plat does not show the corner or give any reference for its specific location. The position of the corner was computed from centerline monumentation found in Colony Woods, Section V, specifically along Camden Drive and Scranton Court. This position was staked in the field and a 2 foot diameter hole was excavated with the permission of the owner of Lot 36, Colony Square. The plat of Colony Woods, Section V does not state what monument was held at the corner. Excavation revealed remnants of the base of wood post at 20 inches deep, slightly west of the calculated position. Several stones were found from 20 inches deep to 28 inches deep, all east of the remnants of the post. The calculated position falls approximately in the center of the group of stones and over a stone which is 28 inches deep. None of the stones could be positively identified as specific corner stones, but the presence of the post and stones at the calculated position are accepted as evidence that this is the position of the historically occupied corner. A 5/8 inch rebar, 24 inches long with a metal cap stamped Boone County Surveyor was set at the position of the corner as calculated from centerline control monuments found in Colony Woods Section V, directly over a stone at 28 inches deep. This corner was originally established as a wood post in July, 1821.



- A - S.W. corner house, ground level, 10.2'
- B - S.E. corner house, groundlevel, 30.0'
- C - C/L control, rebar with metal cap, flush, 104.9'
- D - C/L control, rebar with metal cap, flush, 103.1'
- E - C/L control, rebar with metal cap, flush, 90.0'



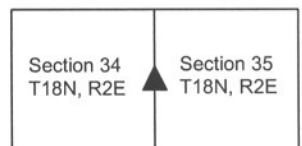
*Kenneth E. Hedge*  
 Kenneth E. Hedge, County Surveyor

*James S. Swift*

James S. Swift, IN LS 20200054

July 14, 2010

Eagle Township



# SECTION CORNER RECORD

## BOONE COUNTY SURVEYOR'S OFFICE

SE 550-1100

State Plane grid coordinates NAD83 (NSRS 2007):

North: 1718008.83 East: 3183565.95 (U.S. survey feet)

Type of monument: Harrison, 4" disk 'Section Corner'

Depth: One inch below adjacent road surface

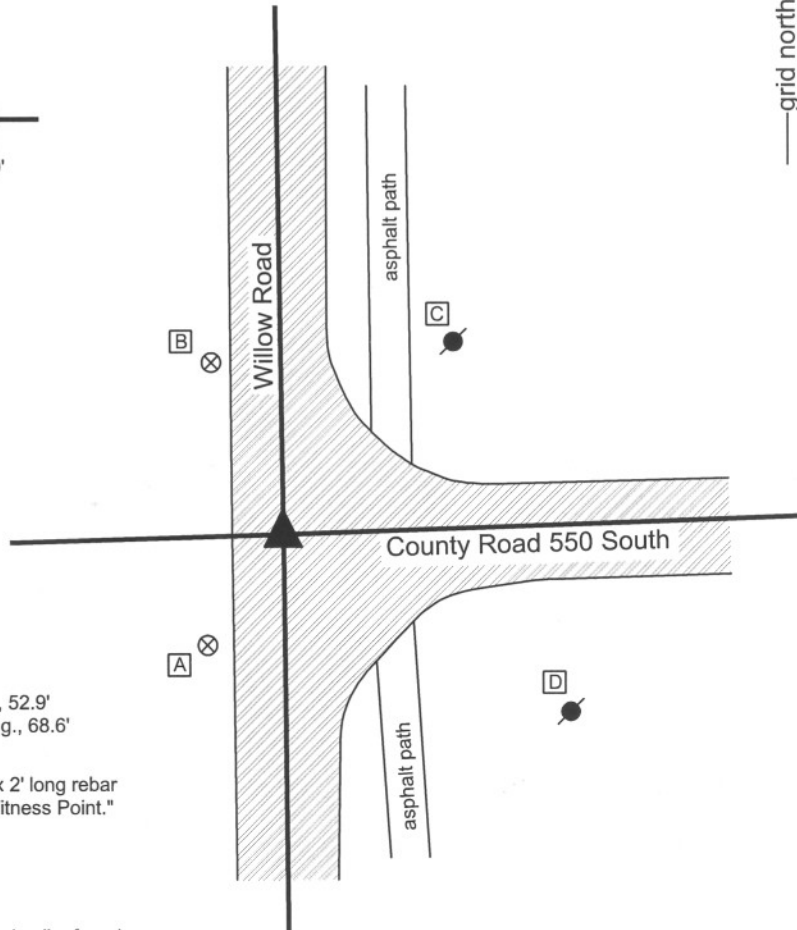
Indiana tie card references:

IN02\_T18NR2E35\_44

IN02\_T18NR2E36\_36

### CORNER WITNESS DETAIL

SCALE 1" = 40'



- A - Boone County witness mark, flush, 28.07'
- B - Boone County witness mark, flush, 39.00'
- C - Mag nail set in W. side power pole, 2.0' a.g., 52.9'
- D - Mag nail set in N.W. side power pole, 3.0' a.g., 68.6'

Boone County witness mark is a 3/8" diameter x 2' long rebar bearing a metal cap stamped "Boone County Witness Point."

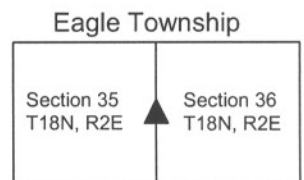
The harrison monument was set in place of a railroad spike found.

A BCS record of April 2-3, 1877 states "found by intersecting lines." A BCS record of September 3-4, 1889 states "Est. from Wit rock (see Survey of 1877). Set Rock + 24,8,7." A BCS tie card dated March 6, 1991 shows the corner as a P.K. nail found. The center of the road at this corner falls 3 feet above the adjoining land to the northeast, 4 feet above the adjoining land to the northwest and southeast and significantly more that than above the adjoining land to the southwest. Significant excavation was not performed. A railroad spike was found at 3 inches below grade which appears to fit with the references to the P.K. nail on the 1991 tie card. The plats and surveys tied to this corner have generally held the railroad spike or P.K. nail as the corner. The railroad spike was accepted as marking the corner and the harrison monument was set in its place. This corner was originally established as a wood post in July, 1821.



*Kenneth E. Hedge*  
 Kenneth E. Hedge, County Surveyor

*James S. Swift*  
 James S. Swift, IN LS 20200054  
 July 14, 2010



# SECTION CORNER RECORD

SE 600-1000

## BOONE COUNTY SURVEYOR'S OFFICE

State Plane grid coordinates NAD83 (NSRS 2007):

North: 1715214.92 East: 3178233.82 North: 1715215.92 East: 3178265.16 (U.S. survey feet)

Type & depth of monument:

Standard corner (West): Harrison, 4" disk 'Section Corner' one inch below adjacent road surface.

Closing corner (East): Harrison, 4" disk "Section Corner' flush with ground.

Indiana tie card references:

IN02\_T17NR2E02\_00      IN02\_T17NR2E03\_08  
 IN02\_T18NR2E34\_80      IN02\_T18NR2E35\_72

The harrison monuments were both set over stones found. A BCS record of November 7,8,9, 1894 states "Reestablished from lap. Set Rock + 19.12.7 at corner. Set Rock + 9.20.12 under. Several small stones around. Corner section 2 + 3 East 48 [links]."

BCS field notes dated 12/2/1968 call for a stone at the standard corner (common to sections 34 and 35). However, the tie card made from these field notes was identified as being for the south quarter corner of section 34, 1/2 mile west, and the tie card has long been improperly referenced to the wrong corner. A BCS tie sheet dated June 15, 1989 calls for a stone at the closing corner (common to sections 2 and 3).

Many surveys in this vicinity call for the stone at the closing corner. This set of corners was originally excavated and the standard corner monumented on December 4, 2007, with final monumentation at the closing corner completed on December 11, 2008.

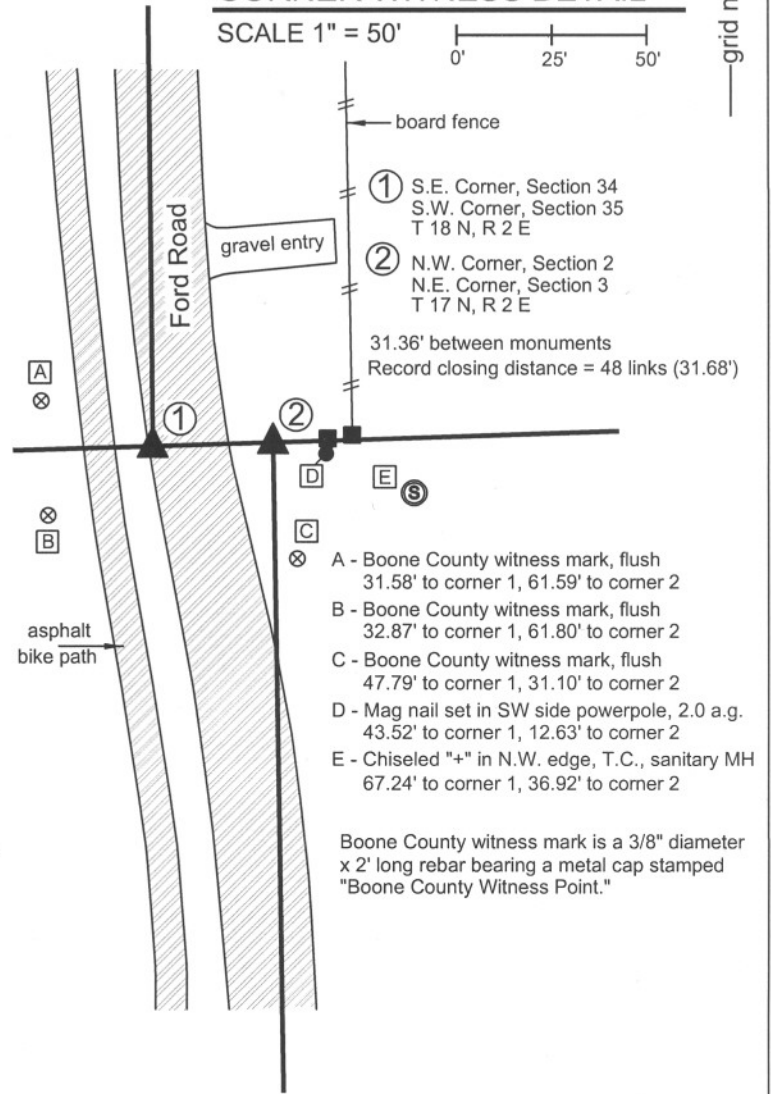
Prior to excavation a 5/8 inch rebar was visible in a hole in the asphalt in the vicinity of the standard corner and a harrison monument was visible at the surface of the ground in the vicinity of the closing corner. No documentation was found for the source of either of these monuments. Excavation revealed stones at both corners. The stone at the standard corner was found 2 feet deep, completely established in the clay and appears to be the record lower stone from 1894. Iron pipes were found on the east and south sides of this stone. The 5/8 inch rebar which had been the visible monument prior to excavation had been driven into the iron pipe on the east side of the stone. The harrison monument at the closing corner was set in a minimal amount of concrete and was easily removed. The stone at the closing corner was found approximately 10 inches deep 1.5 feet west of the harrison monument. The record federal offset distance (as well as record 1894 "lap") at this corner is 48 links or 31.68 feet. The top, centers of the two stones are 31.36 feet apart. The harrison monument at the standard corner was set over the top, center of the stone found. From December 4, 2007 to December 11, 2008, the stone at the closing corner was left visible within a piece of 12 inch smooth corner black storm pipe, set vertically. On December 11, 2008 a harrison monument was set over the top of this stone, on line between the harrison monuments at the southwest and south quarter corners of section 35. This monument was truncated at 8 inches and set in concrete within the vertical storm pipe over the stone. The top of the stone was encased in concrete. At 1 foot below the top of the stone, it measures 14 inches N-S by 12 inches E-W and is very stable, clearly extending deeper into the ground. A notch was cut out of the bottom of the north edge of the storm pipe to fit it over the stone.

These corners were originally established as wood posts in 1819 (standard) and 1821 (closing).

### CORNER WITNESS DETAIL

SCALE 1" = 50'

0' 25' 50'



*Kenneth E. Hedge*  
 Kenneth E. Hedge, County Surveyor

*James S. Swift*  
 James S. Swift, IN LS 20200054

March 11, 2009

Eagle Township

Section 34 T18N, R2E	Section 35 T18N, R2E
Section 3 T17N, R2E	Section 2 T17N, R2E

PHOTOGRAPHIC DOCUMENTATION

Date of photography: December 4, 2007 and December 11, 2008

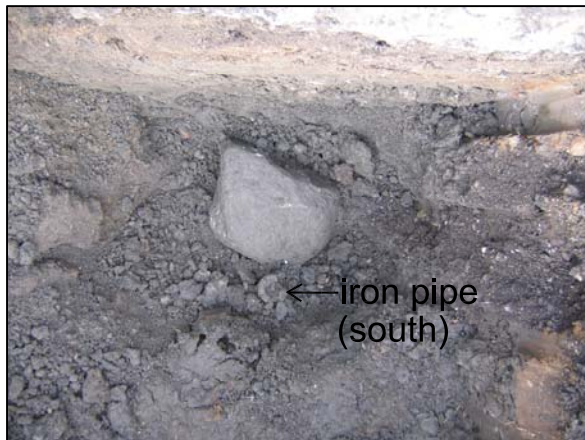
Photograph of the stone at the closing corner (east of Ford Road) and the Harrison monument. The Harrison is 1.5 feet east of the top, center of the stone. The Harrison monument was removed and a new Harrison set over the stone on December 11, 2008.



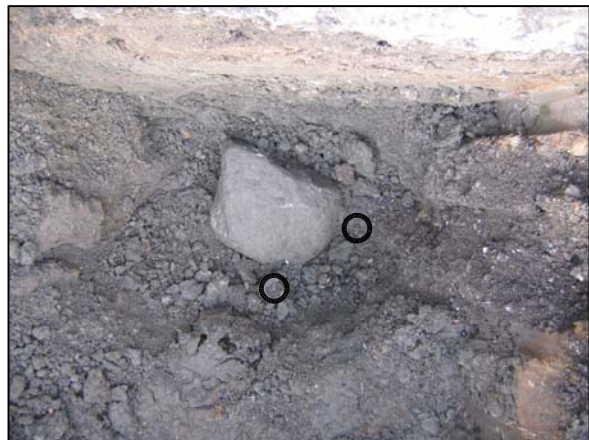
Close up of the closing corner stone with approximately 18 inches of the stone exposed.



Photograph of the record lower stone found at the standard corner (on the west edge of pavement, Ford Road). Note the iron pipe on the south edge of the stone. A similar iron pipe was found on the east edge of the stone, but removed prior to this photo. The iron pipe on the east edge of the stone had a 5/8 inch rebar driven into the center of it. The rebar was the visible monument prior to excavation.



The same photograph as the one that to the left, but with additional graphics highlighting the iron pipe on the south side of the stone and demonstrating the approximate position of the iron pipe which was previously on the east side of the stone.



# SECTION CORNER RECORD

SE 600-1050

## BOONE COUNTY SURVEYOR'S OFFICE

State Plane grid coordinates NAD83 (NSRS 2007):

North: 1715301.47 East: 3180923.19 (U.S. survey feet) (corner 1)

Type of monument: Harrison, 4" disk 'Section Corner' (corner 1)

Depth: 6 inches above adjoining grade in concrete pillar (corner 1)

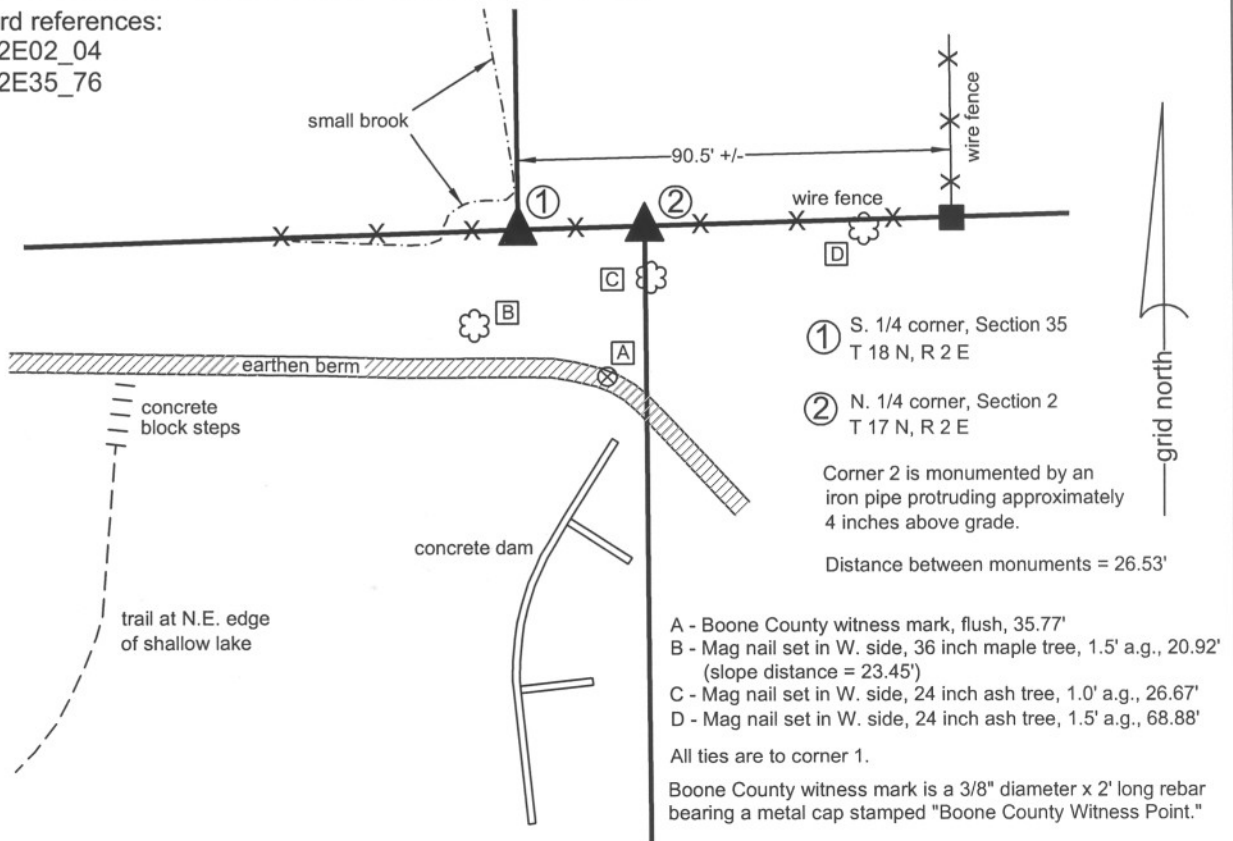
### CORNER WITNESS DETAIL

SCALE 1" = 40'

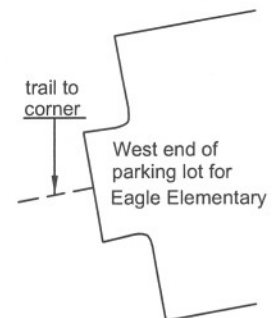
Indiana tie card references:

IN02\_T17NR2E02\_04

IN02\_T18NR2E35\_76



The harrison monument was set in place of an iron pipe found and held as marking the corner. BCS records of April 25 to 28, 1866 discuss this corner extensively, calling for stones set at the standard corner (west, section 35) of 12.8.7 inches with a + on the N. side, under which was set a stone 15.5.4 + on top. The stones set at the closing corner (east, section 2) are 13.9.8 with a + on the S. side, under which was set a stone 6.5.3 + (location of + not specified). Excavation in the form of probing and excavating small rocks took place on several occasion in various conditions of soil saturation. The record stones were not found. Two iron pipes, both in the old east-west fence line, were present in the vicinity of these corners, both of which have been held as marking the respective corners on many private surveys in the vicinity. The source of these pipes is not known. It is observed that the ground in this area has been significantly disturbed both by nature (due to the presence of a small stream in the immediate vicinity of the corners) and by humans (due to the presence of a large, man-made earthen berm immediately south of the corner). The iron pipes were accepted as the best available evidence of the corners and were held as marking such. The iron pipe at the standard corner was replaced with a harrison monument. The 1866 record calls for the distance between the corners to be 40 links (26.4 feet). The measured distance between the harrison and remaining pipe is 26.53 feet. This standard corner was originally established as a wood post in 1819. The closing corner was not established by federal surveyors.

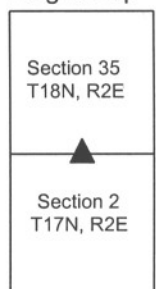


*Kenneth E. Hedge*  
Kenneth E. Hedge, County Surveyor

*James S. Swift*  
James S. Swift, IN LS 20200054

March 11, 2009 Revised July 14, 2010

Eagle Twp





# SECTION CORNER RECORD

SE 600-1100


## BOONE COUNTY SURVEYOR'S OFFICE

State Plane grid coordinates NAD83 (NSRS 2007):

Corner 1: North: 1715374.00 East: 3183593.68 (U.S. survey feet)

Corner 2: North: 1715374.59 East: 3183614.80 (U.S. survey feet)

### CORNER WITNESS DETAIL

SCALE 1" = 50' 

Corner 1:

Type of monument: Harrison, 4" disk 'Section Corner'

Depth: 3 inches above adjacent ground.

Corner 2:

Type of monument: 5/8 inch rebar, 30 inches long with metal cap stamped "Boone County Surveyor" (flush).

Indiana tie card references:

IN02\_T17NR2E01\_00 IN02\_T17NR2E02\_08

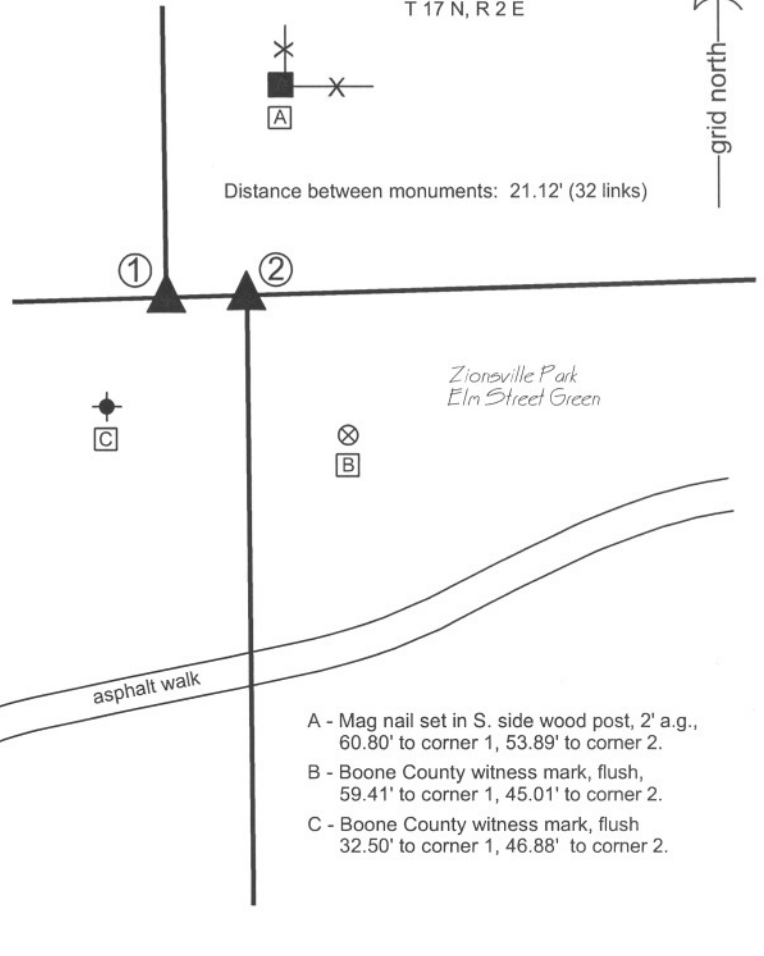
IN02\_T18NR2E35\_80 IN02\_T17NR2E36\_72

The harrison monument at corner 1 was set in place of a one-inch diameter pipe found. The rebar set at corner 2 was set on the township line at the record closing offset distance of 32 links (21.12 feet) east of corner 1.

The BCS Surveyor's Record does not call for stones at either of these corners. No recent tie cards were found for the corners. Several surveys show the pipe as being at corner 1, including a survey by Richard A. O'Brian, recorded in Survey Book 4, page 38. General excavation and probing of the ground in the area did not produce further evidence of the corner. The origin of the pipe is not known, but given the lack of other evidence, including contrary evidence, the pipe was held as marking corner 1. Corner 2 was set relative to the position of Corner 1, as noted above.

① S.E. Corner, Section 35  
S.W. Corner, Section 36  
T 18 N, R 2 E

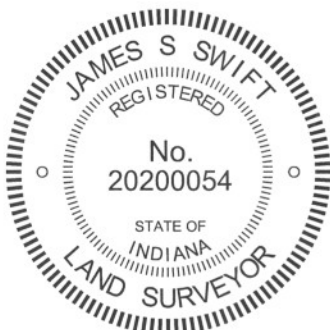
② N.W. Corner, Section 1  
N.E. Corner, Section 2  
T 17 N, R 2 E



A - Mag nail set in S. side wood post, 2' a.g.,  
60.80' to corner 1, 53.89' to corner 2.

B - Boone County witness mark, flush,  
59.41' to corner 1, 45.01' to corner 2.

C - Boone County witness mark, flush  
32.50' to corner 1, 46.88' to corner 2.



*Kenneth E. Hedge*  
Kenneth E. Hedge, County Surveyor

*James S. Swift*  
James S. Swift, IN LS 20200054  
July 25, 2011

Eagle Township

Section 35 T18N, R2E	Section 36 T18N, R2E
Section 2 T17N, R2E	Section 1 T17N, R2E