

SECTION CORNER RECORD

SE 500-400

BOONE COUNTY SURVEYOR'S OFFICE

State Plane grid coordinates NAD83 (NSRS 2007):

North: 1719609.07 East: 3146019.02 (U.S. survey feet)

Type of monument: Harrison, 4" disk 'Section Corner'

Depth: 4 inches above adjoining grade.

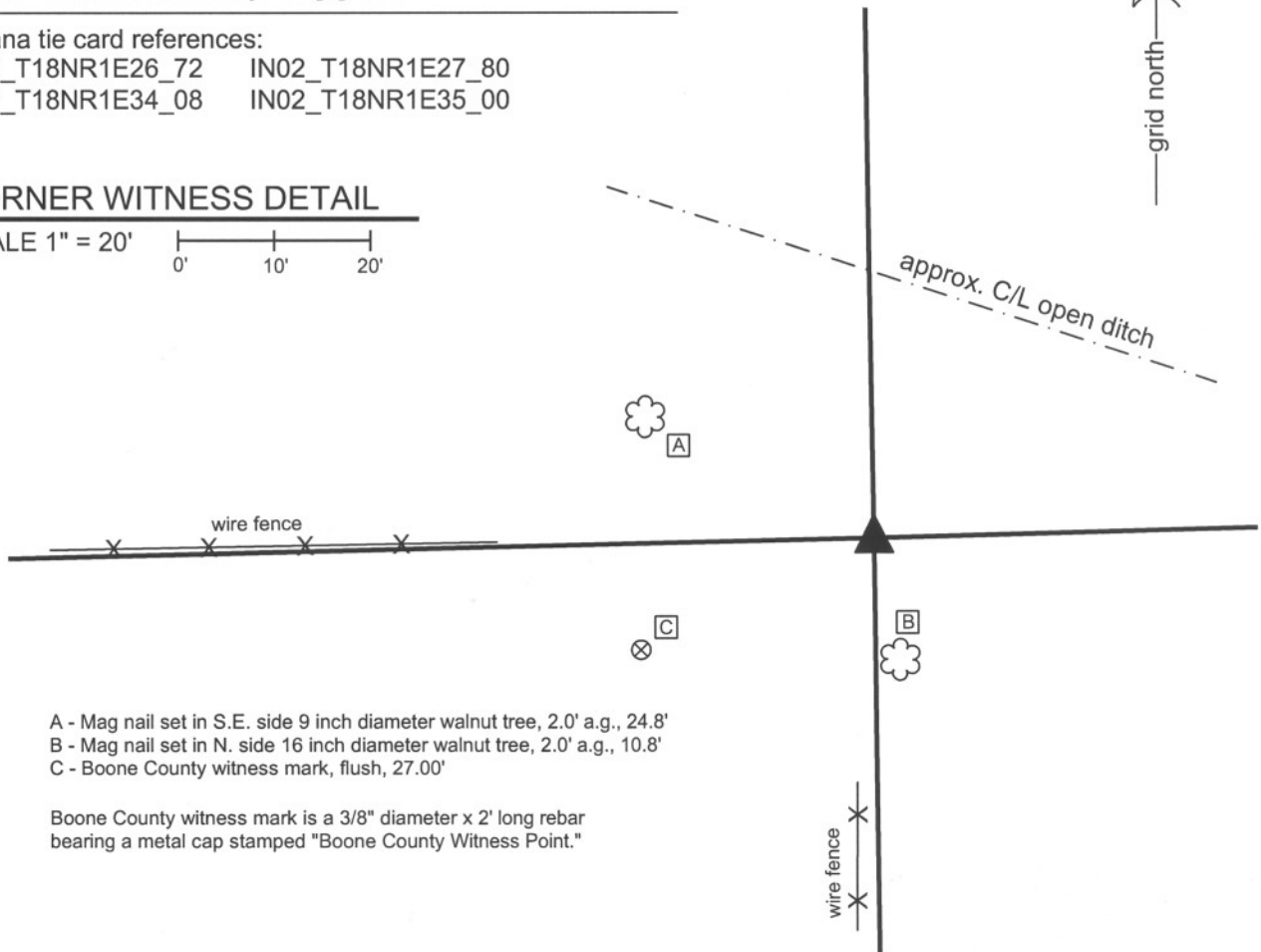
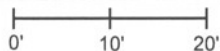
Indiana tie card references:

IN02_T18NR1E26_72 IN02_T18NR1E27_80

IN02_T18NR1E34_08 IN02_T18NR1E35_00

CORNER WITNESS DETAIL

SCALE 1" = 20'



- A - Mag nail set in S.E. side 9 inch diameter walnut tree, 2.0' a.g., 24.8'
- B - Mag nail set in N. side 16 inch diameter walnut tree, 2.0' a.g., 10.8'
- C - Boone County witness mark, flush, 27.00'

Boone County witness mark is a 3/8" diameter x 2' long rebar bearing a metal cap stamped "Boone County Witness Point."

The harrison monument was set in place of a rebar found at the base of a cedar post. A BCS record of July 23,24,28, 1868 states "Reestablished from Wh Ash Stump. Set a stake." No recent BCS tie cards were found referencing this corner. All recorded surveys found reference a rebar as the corner, including the preliminary survey to Perry Industrial Park, recorded in Survey Book 4, page 22 in the Office of the Boone County Recorder. This corner was excavated October 20, 2009. Prior to excavation, a wood post was visible approximately in line with portions of old fence to the West and South. A 5/8 inch rebar bearing a plastic cap stamped "Dodge S0288" was found at the east edge of the base of the post. The post was a cedar post, rotten and broken-off at ground level but intact below the ground. Evidence of old fences to the East, West and South were found at the post, below ground. No stones were found. As the rebar was adjacent to the post and has been held for the corner by all known surveys, the rebar was held as the corner and the harrison monument was set in its place. Uncertainties with the location of the corner with respect to different positions of the rebar and post are approximately one-half foot. This corner was originally established as a wood post in July, 1820.



Kenneth E. Hedge
 Kenneth E. Hedge, County Surveyor

James S. Swift
 James S. Swift, IN LS 20200054
 July 14, 2010

	Perry Twp	Worth Twp
	Section 27 T18N, R1E	Section 26 T18N, R1E
Perry Twp	Section 34 T18N, R1E	Section 35 T18N, R1E

SECTION CORNER RECORD

SE 500-450

BOONE COUNTY SURVEYOR'S OFFICE

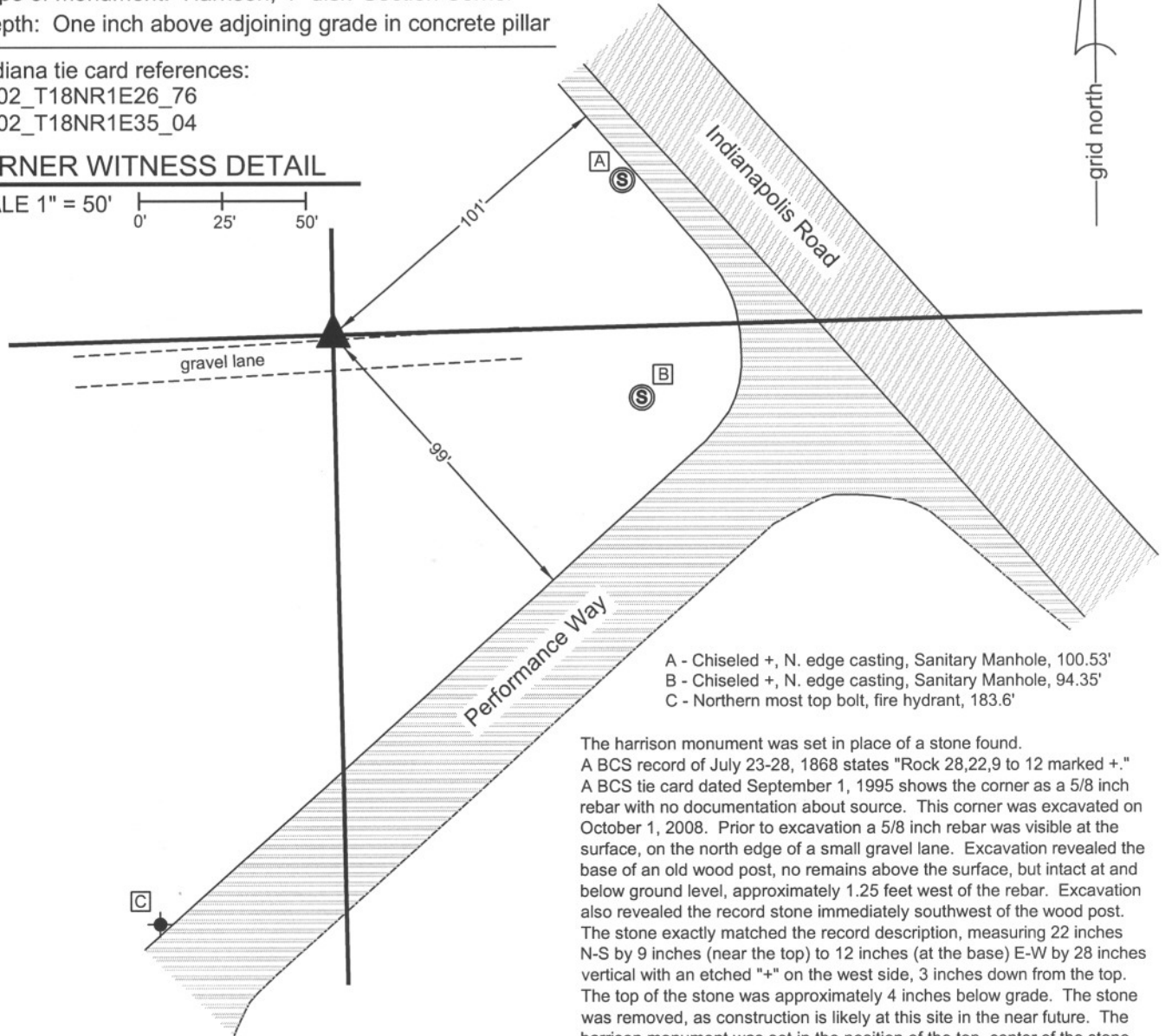
State Plane grid coordinates NAD83 (NSRS 2007):
North: 1719679.26 East: 3148686.08 (U.S. survey feet)

Type of monument: Harrison, 4" disk 'Section Corner'
Depth: One inch above adjoining grade in concrete pillar

Indiana tie card references:
IN02_T18NR1E26_76
IN02_T18NR1E35_04

CORNER WITNESS DETAIL

SCALE 1" = 50'
0' 25' 50'



- A - Chiseled +, N. edge casting, Sanitary Manhole, 100.53'
- B - Chiseled +, N. edge casting, Sanitary Manhole, 94.35'
- C - Northern most top bolt, fire hydrant, 183.6'

The harrison monument was set in place of a stone found. A BCS record of July 23-28, 1868 states "Rock 28,22,9 to 12 marked +." A BCS tie card dated September 1, 1995 shows the corner as a 5/8 inch rebar with no documentation about source. This corner was excavated on October 1, 2008. Prior to excavation a 5/8 inch rebar was visible at the surface, on the north edge of a small gravel lane. Excavation revealed the base of an old wood post, no remains above the surface, but intact at and below ground level, approximately 1.25 feet west of the rebar. Excavation also revealed the record stone immediately southwest of the wood post. The stone exactly matched the record description, measuring 22 inches N-S by 9 inches (near the top) to 12 inches (at the base) E-W by 28 inches vertical with an etched "+" on the west side, 3 inches down from the top. The top of the stone was approximately 4 inches below grade. The stone was removed, as construction is likely at this site in the near future. The harrison monument was set in the position of the top, center of the stone, in line with the etched "+". This position is 1.0 foot south and 2.0 feet west of the 5/8 inch rebar. This corner was originally established as a wood post in June, 1820.



Kenneth E. Hedge
Kenneth E. Hedge, County Surveyor

James S. Swift
James S. Swift, IN LS 20200054

March 11, 2009 Revised July 14, 2010

Worth Township

Section 26
T18N, R1E

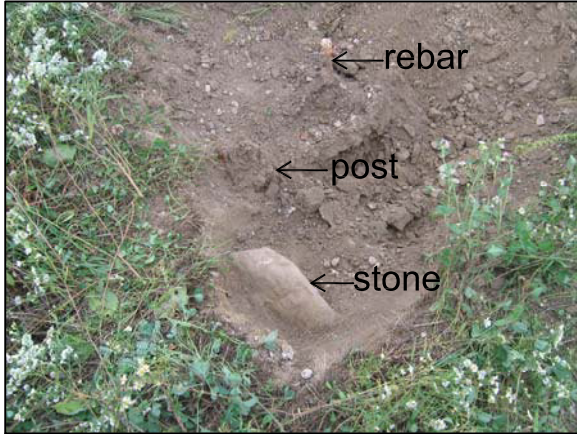
Perry Township

Section 35
T18N, R1E

PHOTOGRAPHIC DOCUMENTATION

Date of photography: October 1, 2008

Overhead view from southwest showing partially exposed stone, partially exposed post and rebar.



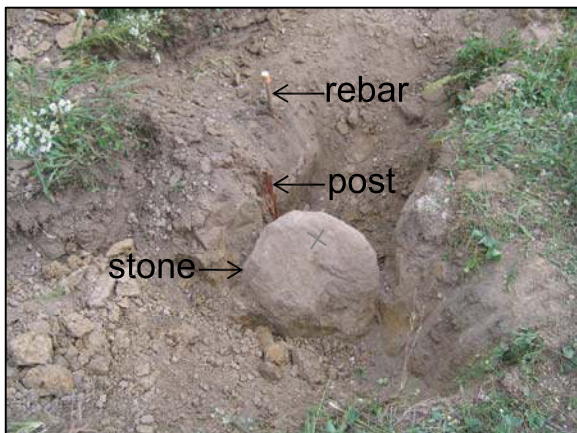
View from south looking across stone and post to wood post at southerly terminus of north-south fence. Post is on North Indianapolis Road.



Over head view from west showing more of the stone exposed along with post and rebar.



Similar view as above with most of the stone and post exposed and the etched "+" on the stone enhanced for ease of visual detection.



Overhead view from east showing rebar and most of stone and post exposed.



For details and documentation, refer to related sheet "Section Corner Record."

SECTION CORNER RECORD

SE 500-500

BOONE COUNTY SURVEYOR'S OFFICE

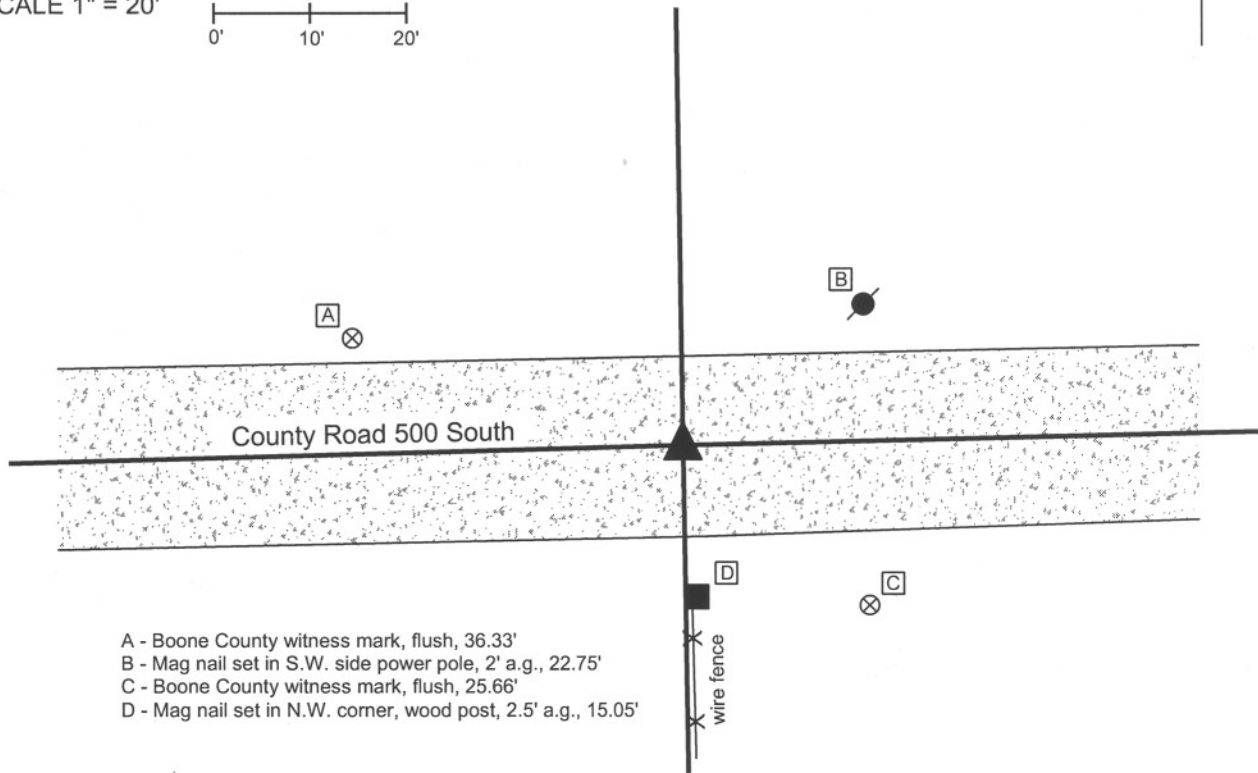
State Plane grid coordinates NAD83 (NSRS 2007):
North: 1719749.71 East: 3151359.26 (U.S. survey feet)

Type of monument: Harrison, 4" disk 'Section Corner'
Depth: Four inches below adjacent gravel road surface

Indiana tie card references:
IN02_T18NR1E25_72 IN02_T18NR1E26_80
IN02_T18NR1E35_08 IN02_T18NR1E36_00

CORNER WITNESS DETAIL

SCALE 1" = 20'



- A - Boone County witness mark, flush, 36.33'
- B - Mag nail set in S.W. side power pole, 2' a.g., 22.75'
- C - Boone County witness mark, flush, 25.66'
- D - Mag nail set in N.W. corner, wood post, 2.5' a.g., 15.05'

The harrison monument was set in place of a railroad rail found.
 A BCS record of 12/26/1861 states "found from stump of tree." A BCS record of 7/23/1868 states "re-established. Set a rock, 18,14,7 marked + on top." BCS tie cards dated June 10, 1991 and November 3, 2005 call for a railroad rail. No source record for the railroad rail was found.
 Prior to excavation the railroad rail was situated 6 inches below grade in the approximate center of County Road 500 South, north and slightly west of the end post of a well established fence to the south. An area seven feet E-W by seven feet N-S, centered on the rail, was excavated into the clay (approximately 24 inches deep) on March 31, 2008. Neither the record stone nor any other monument was found. The rail was replaced with a harrison monument set in concrete.
 This corner was originally established as a wood post in June 1820.



Kenneth E. Hedge
 Kenneth E. Hedge, County Surveyor

Perry Township

James S. Swift
 James S. Swift, IN LS 20200054

Worth Township

March 11, 2009

Section 26 T18N, R1E	Section 25 T18N, R1E
Section 35 T18N, R1E	Section 36 T18N, R1E

SECTION CORNER RECORD

SE 550-400

BOONE COUNTY SURVEYOR'S OFFICE

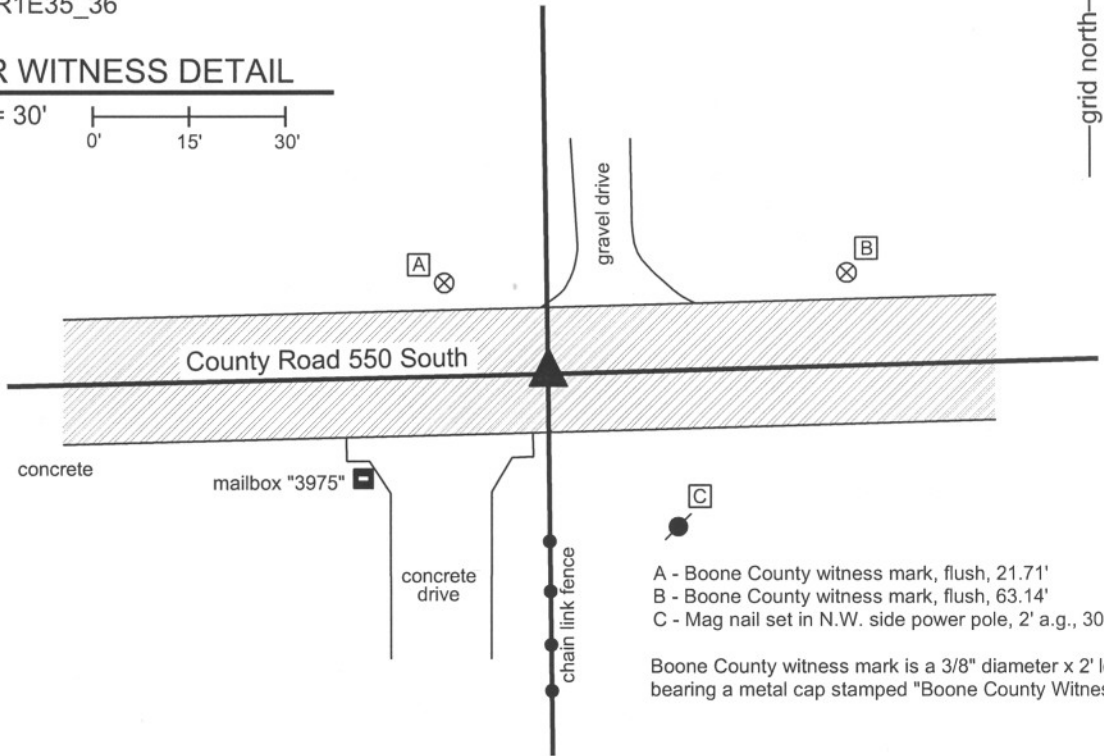
State Plane grid coordinates NAD83 (NSRS 2007):
North: 1716953.96 East: 3146053.72 (U.S. survey feet)

Type of monument: Harrison, 4" disk 'Section Corner'
Depth: One inch below adjacent road surface

Indiana tie card references:
IN02_T18NR1E34_44
IN02_T18NR1E35_36

CORNER WITNESS DETAIL

SCALE 1" = 30'

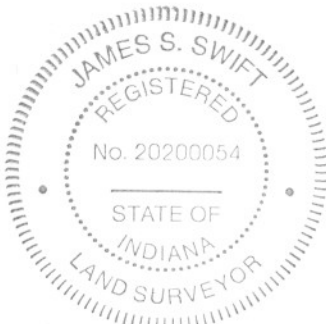


- A - Boone County witness mark, flush, 21.71'
- B - Boone County witness mark, flush, 63.14'
- C - Mag nail set in N.W. side power pole, 2' a.g., 30.1'

Boone County witness mark is a 3/8" diameter x 2' long rebar bearing a metal cap stamped "Boone County Witness Point."

The harrison monument was set in place of a harrison monument and a railroad rail found. A BCS record of November 14, 1912 states "Re-Est. by measure. Set rock 16,14,7 +." No BCS tie cards were found for this corner. Prior to excavation a harrison monument was visible at the surface. No documentation was found for the source of the harrison. This corner was excavated on May 22, 2008. Excavation yielded two iron monuments found at 7 inches deep: a railroad rail directly below the harrison and a 12 inch long bolt spike 0.75 foot south and 0.2 foot east of the rail. Further excavation yielded no more monuments. The area of excavation was 4 feet E-W by 4 feet N-S centered on the harrison, excavated to approximately 27 inches deep. The harrison monument was set in place of the railroad in the same position as the harrison which existed prior to excavation.

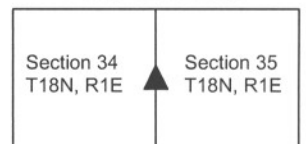
It is noted that this section of road is shown on the 1876 map of the county but the cross section of the material comprising the road does not match that of similar situations wherein a modern county road evolved from a wagon road. Typically, the cross section in such a situation is surface material (usually asphalt of varying thickness), under which is a tight gravel and stone substance under which is gravel of a looser, more sandy composition, under which is the base clay. Corner stones are generally found in the clay, protruding slightly into the bottom material of the road. This particular corner has a cross section of 5-6 inches of asphalt under which is 5-6 inches of packed asphalt millings under which is 12 inches of a green clay which is not similar to other base clay material observed in this vicinity. The natural brown clay begins at 2 feet deep, well below the surrounding ground level. It appears that reconstruction of the road has taken place in this area and it is logical to conclude that the stone was removed during that process. This corner was originally established as a wood post in June, 1820.



Kenneth E. Hedge
Kenneth E. Hedge, County Surveyor

James S. Swift
James S. Swift, IN LS 20200054
March 11, 2009

Perry Township



SECTION CORNER RECORD

SE 550-500

BOONE COUNTY SURVEYOR'S OFFICE

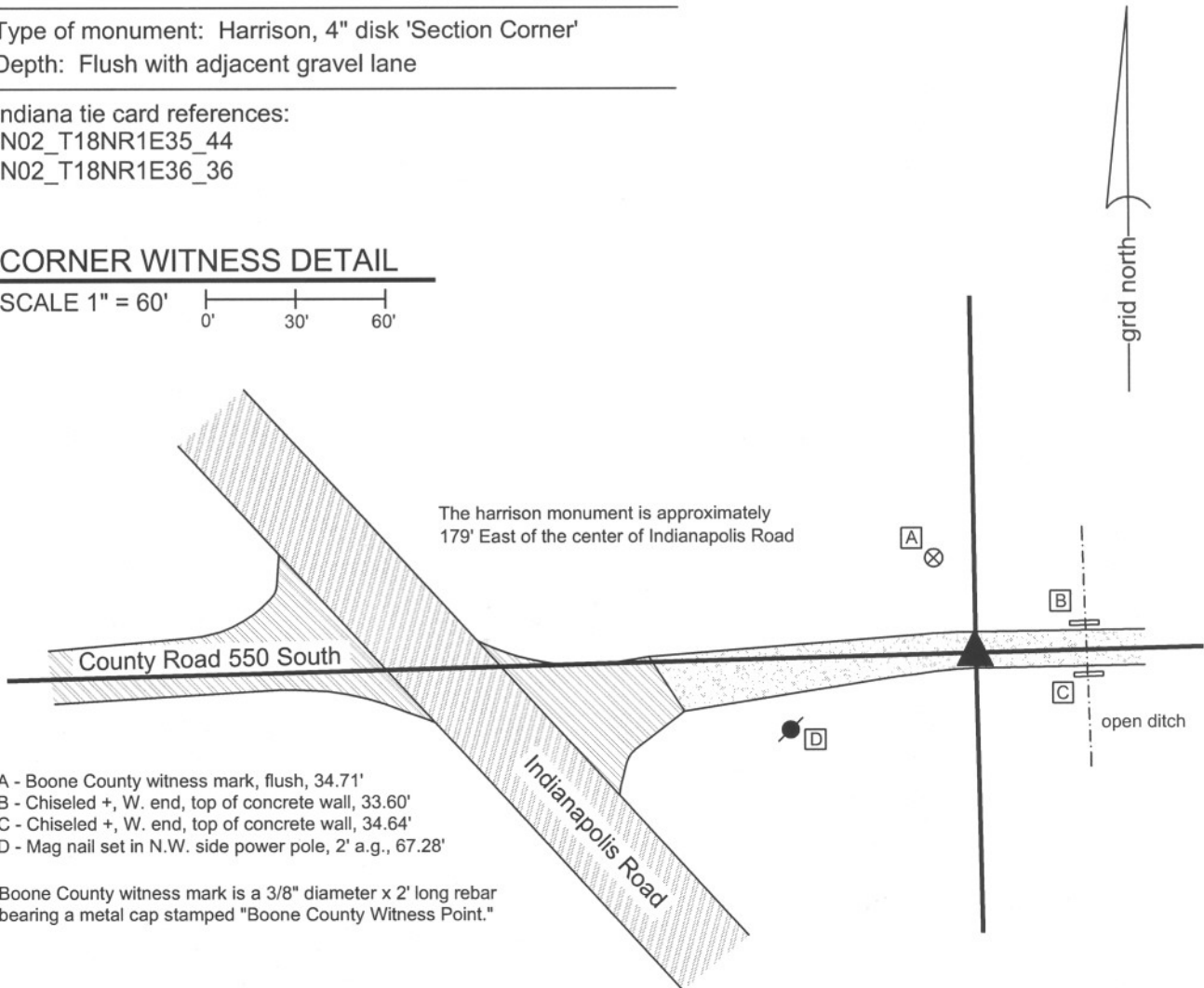
State Plane grid coordinates NAD83 (NSRS 2007):
North: 1717097.32 East: 3151399.81 (U.S. survey feet)

Type of monument: Harrison, 4" disk 'Section Corner'
Depth: Flush with adjacent gravel lane

Indiana tie card references:
IN02_T18NR1E35_44
IN02_T18NR1E36_36

CORNER WITNESS DETAIL

SCALE 1" = 60'
0' 30' 60'



Boone County witness mark is a 3/8" diameter x 2' long rebar bearing a metal cap stamped "Boone County Witness Point."

The harrison monument was set over the etched "+" on a stone found.

A BCS record of November 14-15, 1870 states "Reestablished from roots of Elm and stake set in former survey. Set two Rocks. One 11,8,6 +. Top one 16,12,9 marked +." A BCS tie card with no date, though likely from the early 1990s, shows the corner as a 5/8 inch rebar with no documentation about source. This corner was excavated on October 1, 2008. Prior to excavation, a 5/8 inch rebar was visible flush with the stone/gravel lane. This monument fit with the ties from the undated tie card. Excavation revealed the record stone 4 inches deep, several feet west of the rebar. The stone matches the record description, measuring 12 inches E-W by 9 inches N-S by 16 inches vertical with an etched "+" on top. This stone was removed and the record lower stone was found directly below it, measuring 8 inches E-W by 11 inches N-S by 6 inches thick with a clearly visible etched "+" on top. The "+" on the lower record stone was 0.6 feet S and 3.3 feet W of the 5/8 inch rebar (removed during excavation). The harrison monument was set over the etched "+" on the lower stone. This corner was originally established as a wood post in June, 1820.

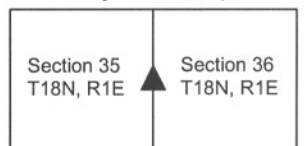


Kenneth E. Hedge
Kenneth E. Hedge, County Surveyor

James S. Swift
James S. Swift, IN LS 20200054

March 11, 2009 Revised July 14, 2010

Perry Township



PHOTOGRAPHIC DOCUMENTATION

Date of photography: October 1, 2008

Upper corner stone - view from above.



Lower corner stone - view from above.



Same picture as above with the etched "+" enhanced for ease of visual detection.



View of the record upper stone from east, looking across the stone and along the gravel lane and County Road 550 South.



View of the record upper stone and gravel lane from west, looking toward the east.



For details and documentation, refer to related sheet "Section Corner Record."

SECTION CORNER RECORD

SE 600-400

BOONE COUNTY SURVEYOR'S OFFICE

State Plane grid coordinates NAD83 (NSRS 2007):

North: 1714302.84 East: 3146089.70 (U.S. survey feet) corner 1

North: 1714305.84 East: 3146215.06 (U.S. survey feet) corner 2

Type of monument: Harrison, 4" disk 'Section Corner' (corner 1 only)

Depth: 3 inches above adjacent ground.

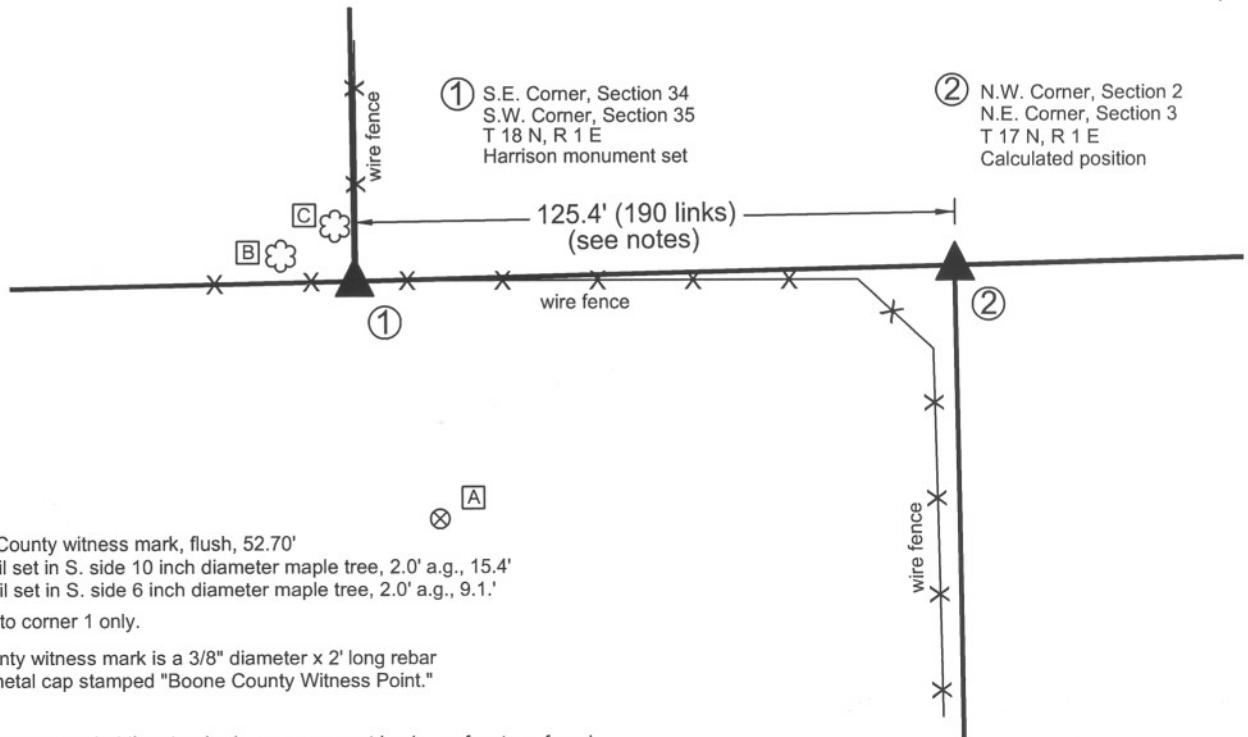
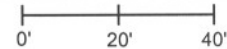
Indiana tie card references:

IN02_T17NR1E02_00 IN02_T17NR1E03_08

IN02_T18NR1E34_80 IN02_T18NR1E35_72

CORNER WITNESS DETAIL

SCALE 1" = 40'



- A - Boone County witness mark, flush, 52.70'
- B - Mag nail set in S. side 10 inch diameter maple tree, 2.0' a.g., 15.4'
- C - Mag nail set in S. side 6 inch diameter maple tree, 2.0' a.g., 9.1.'

All ties are to corner 1 only.

Boone County witness mark is a 3/8" diameter x 2' long rebar bearing a metal cap stamped "Boone County Witness Point."

The harrison monument at the standard corner was set in place of a stone found.

A BCS record of November 14, 1912 states "Re-Est. by measure & intersection. Set rock 17,12,11 +." No recent BCS tie cards were found referencing this corner. The record stone was found buried, with a small portion of the top of the rock exposed, under the E-W fence adjacent to and immediately west of an old corner post at the intersection of fence to the east, west and north. The stone was generally horizontal with a distinct top protruding slightly from the dirt. The stone was removed from its position and measured. The main stone measures the record dimensions of 17x12x11 inches. A small 2 inch protrusion causes a technical maximum dimension of 19 inches, but the main stone is clearly the record dimensions. No specific markings were found on the stone. The surface is quite rough and it is not as clear what might be intentional markings as on smoother surfaced stones. The stones were rolled to the north and the harrison monument was set in the position of the stone as originally found. The closing corner falls on the edge of a lake and no monument was set. The original government notes for this corner state that the corner is 99 links east of the standard corner. However, a record in the BCS Surveyor's Record dated December 2, 1889 states "Found lap as corners are established at 190 links instead of 99 as per Record of original." Establishing the closing corner at 190 links east causes the corner to fall approximately 4 feet east of the northerly prolongation of an old N-S fence. The coordinates shown above for the computed corner hold the 190 link distance, per the 1889 record.

The standard corner was originally established as a wood post in 1819 and the closing corner was established in 1820.



Kenneth E. Hedge
 Kenneth E. Hedge, County Surveyor

James S. Swift
 James S. Swift, IN LS 20200054
 July 14, 2010

Perry Township

Section 34 T18N, R1E	Section 35 T18N, R1E
Section 3 T17N, R1E	Section 2 T17N, R1E

PHOTOGRAPHIC DOCUMENTATION

Date of photography: May 7, 2008 and November 3, 2009

The stone as found and exposed in 2008.



The stone and post in 2009.



The stone and post in 2009.



For details and documentation, refer to related sheet "Section Corner Record."

SECTION CORNER RECORD

BOONE COUNTY SURVEYOR'S OFFICE

SE 600-450

State Plane grid coordinates NAD83 (NSRS 2007):

North: 1714366.43 East: 3148766.31 (U.S. survey feet) corner 1

Type of monument: 5/8 inch rebar with metal cap stamped "Boone County Surveyor"

Depth: 20 inches below adjacent tilled ground.

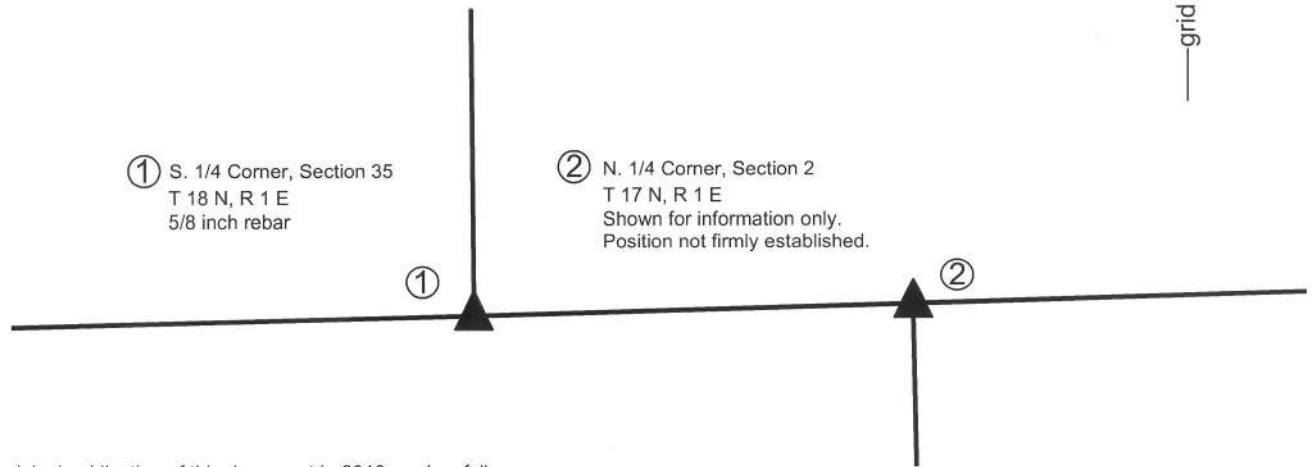
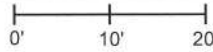
Indiana tie card references:

IN02_T17NR1E02_04

IN02_T18NR1E35_72

CORNER WITNESS DETAIL

SCALE 1" = 20'



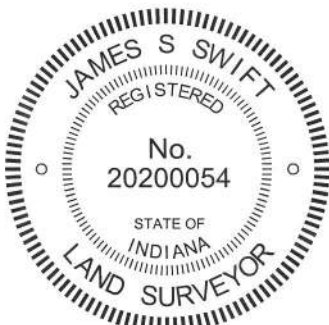
The original publication of this document in 2010 read as follows:

"The rebar was set in place of a rebar found.

The standard corner is not specifically described in the BCS Surveyor's Record beyond the original establishment of the corner in 1819. It is mentioned as the terminal point for a measurements in 1838. The closing corner is referenced in a record of March 16th, 1874 as "A point 70 links East of corner F Section 35." The same record also notes that the northeast corner of the northwest quarter of the northeast corner of section 2 is at a point 55 links east of rock at corner for section 35. This is notable because clearly the 70 links, which is approximately the average of the original closing distances at the respective section corners to the east and west, is held for the offset. However, as noted on the tie card referenced as SE-600-400, the closing distance at the northwest corner of section 2 has been held as 190 links rather than the record 99 links since before 1889. At the subject corner, though, the average of the original record closing distances (99 links at NW corner, section 2 and 40 links at NE corner, section 2) was held in 1874. As the closing corner shown on this document was not established by the original federal surveyors, it was not monumented and is shown for information purposes only.

The rebar is located at the S.W. corner of the base of a wood post. Excavation around the post yielded a large rock on the north side of the post which appears to be a brace rock and does not appear to be a specific corner stone. The rebar has been held as marking the corner by private surveys, including a survey recorded in Survey Book 5, page 50 in the Office of the Boone County Recorder. No references were found holding the post. The rebar was held as marking the corner. The existing rebar was removed and a new 5/8 inch rebar, 36 inches long, topped with a metal cap stamped "Boone County Surveyor" was set in concrete at the same position as the previous rebar. The S.W. corner of the base of the post is 0.25 of a foot N.E. of the rebar. The standard corner was originally established as a wood post in 1819."

On May 28, 2013 the fences to the north and east of corner 1 were removed by crews combining the three adjacent agricultural fields into one. Prior to removal, the position of the corner post and the rebar marking the corner were confirmed. The undersigned LS witnessed the removal of the post and rebar. After they were removed, a hole was excavated and a new 5/8 inch diameter rebar, 36 inches long was set within the hole at the horizontal position of the previous rebar and marked with a metal cap. The work crews then filled in the hole in which the rebar was set and proceeded to grade the area. Hence, the monument is present but buried at approximately 20 inches deep. No distance ties are shown as the corner now falls within a single tilled field.



Kenneth E. Hedge
 Kenneth E. Hedge, County Surveyor

James S. Swift
 James S. Swift, IN LS 20200054

July 14, 2010, Revised February 5, 2015

Eagle Twp



SECTION CORNER RECORD

BOONE COUNTY SURVEYOR'S OFFICE

SE 600-500



State Plane grid coordinates NAD83 (NSRS 2007):

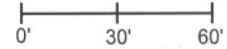
North: 1714436.16 East: 3151447.14 (U.S. survey feet) (standard corner)

North: 1714436.93 East: 3151473.53 (U.S. survey feet) (closing corner)

Type of monument: Harrison, 4" disk 'Section Corner'
 Depth: Approximately 3 inches above adjoining grade.

CORNER WITNESS DETAIL

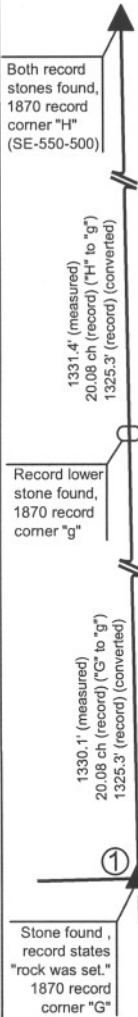
SCALE 1" = 60'



Indiana tie card references:

IN02_T17NR1E01_08 IN02_T17NR1E02_00
 IN02_T18NR1E35_80 IN02_T18NR1E36_72

- A - Boone County witness mark, flush, 32.59' to corner 1, 34.76' to corner 2
- B - Mag nail set in W. side wood post, 2.0' a.g., 36.3' to corner 1, 10.0' to corner 2
- C - 5/8" capped rebar (Dodge), flush, 9.4' to corner 1, 17.2' to corner 2
- D - Boone County witness mark, flush, 26.43' to corner 1, 22.33' to corner 2

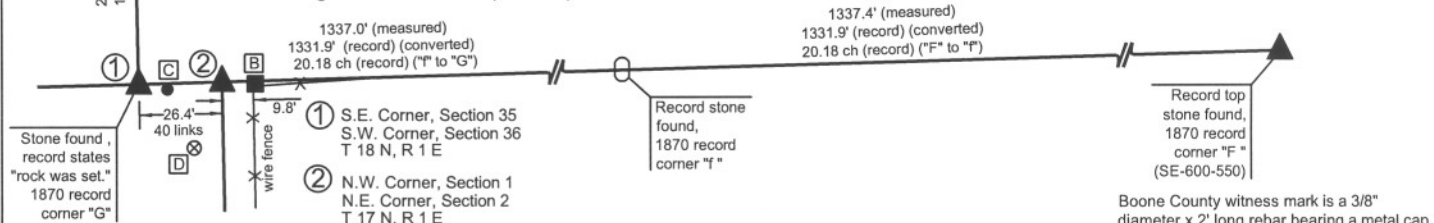


The harrison monument at corner 1 was set in place of a stone found. The harrison monument at corner 2 was set at a calculated position. Corner 1 is addressed in a BCS record dated November 14 & 15, 1870 for section 36 and corner 2 is addressed in a matching record of November 15, 1870 for section 1. These records demonstrate that stones were set at the south quarter corner (F), southwest corner (corner 1 herein) and west quarter corner (H) of section 36 and the quarter-quarter corners on the south and west lines, between the respective corners mentioned above (corners g and f). The record also demonstrates that a stone was set at the north quarter corner of section 1 and the quarter-quarter corner on the north line of section 1 to the west. The record does not state if a monument was set or found at the northwest corner of section 1 (corner 2 herein), but does show measurements to it. All stones but the southwest corner of section 36 (corner 1) are specifically described. The southwest corner of section 36 (corner 1) simply states "rock was set." All of the specifically described stones were found, generally undisturbed and match the record description. A stone found which has the characteristics of a corner stone was found and accepted as marking the southwest corner of section 35 (corner 1.) As shown on the sketch, the relative positions of the found stones fit very well. All measured dimensions are longer than the record dimensions shown in 1870 record, but, as demonstrated on the sketch, they are proportionally very similar. The positional uncertainty of the southwest corner of section 36 relative to the other found monuments is approximately 0.4 foot in the east-west dimension and 1.3 feet in the north-south dimension. This is considered to represent minimal uncertainty in the reconstruction of the 1870 survey. It is also noted that the southwest corner of section 36 is situated at the southerly extension of an old fence to the north and slightly north of the westerly extension of an old fence to the east.

The stone found at the southwest corner of section 36 was found at 18 inches deep, firmly set in the clay layer below the top soil, protruding into the top soil by approximately 4 inches. The stone was 11 inches tall by 11 inches N-S by 4 inches E-W, was vertical as found with a distinct smooth ridge at the top, oriented N-S, and a specific high point of the ridge. The high point was held as the corner. This stone was found at the southwest corner of evidence of an old corner post in the form of a ring of rocks which appear to have been brace rocks, surrounding a space in which fragments of wood and fence were found. The actual post appears to have rotted, but fragments of wood were found in the clay layer below the top soil. Fragments of fence to the east and north were found in the top soil. The specific stone held as the corner stone was set slightly apart from the general ring of stones and its shape, depth and orientation (vertical and N-S) lend to the appearance of being the corner stone.

The presence of the stone, the evidence of the post and position of the stone relative to the other found stones described in 1870 record leaves minimal question as to whether the corner established in 1870 was found and perpetuated. However, recent surveys have held a position approximately 9.8 feet east for the corner. This is due to the relative position of two north-south fences. The fence going north from corner 1 has been removed in the immediate vicinity of the corner and the southern end of the remaining portion of the fence is approximately 130 feet north of the corner. The fence extends north from that point for approximately 1600 feet until it is interrupted by an open drain. The fence to the south from the vicinity of corner 2 is visible at the north end with a clear corner post where it intersects the east-west fence. This fence extends south for only approximately 500 feet until it is also interrupted by an open drain. Previous surveys, including a survey recorded in Survey Book 5, page 50 in the Boone County Recorder's Office, have held either the corner post at the northerly terminus of this fence or a rock at the base of the corner post as corner 2 and have established corner 1 at the record closing distance of 40 links (26.4 feet) west. This is not an unreasonable interpretation of the visible evidence at the corner, as the fence to the south is present and visible at the corner and the fence to the north is not. However, the discovery of the evidence from the 1870 record makes clear that the southwest corner of section 36 (corner 1) falls in line with the fence to the north. Analysis of the measurements shown on that record also makes clear that the original closing distance of 40 links was held in 1870 and that the northwest corner of section 1 (corner 2) should be established at 40 links east of corner 1. Hence, the fence to the south is approximately 9.8 feet east of corner 2.

The stone found and accepted as marking corner 1 was replaced with a harrison monument. Another harrison monument was set on the township line at the record closing distance of 40 links (26.4 feet) east.



Boone County witness mark is a 3/8" diameter x 2' long rebar bearing a metal cap stamped "Boone County Witness Point."



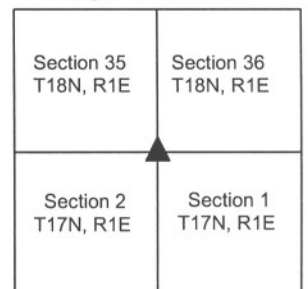
Kenneth E. Hedge
 Kenneth E. Hedge, County Surveyor

James S. Swift

James S. Swift, IN LS 20200054

July 14, 2010

Eagle Township



PHOTOGRAPHIC DOCUMENTATION

Date of photography: May 22 - June 9, 2009

Corner 1: the hole where evidence of the old corner post was found, with the brace rocks which were removed from the hole.



Corner 1: the stone found and held as marking the corner. View from above with photo oriented showing the distinct N-S ridge and high point. This stone had not yet been found when the photo to the left was taken.



Corner " f ": stone found, described in the 1870 record as "set rock full of seams, white spots, etc."



Corner " g ": Stone found next to corner post. The stone matches the description in the 1870 record as being "5,4,3 1/2 +."



Corner 1: the harrison monument set. View from the north.



Corner 2: the harrison monument set and the corner post 9.8 feet east. View from the N.W.



For details and documentation, refer to related sheet "Section Corner Record."