

# SECTION CORNER RECORD

NW 600-800

## BOONE COUNTY SURVEYOR'S OFFICE

State Plane grid coordinates NAD83 (2011):

North: 1777375.70 East: 3082556.81 (U.S. survey feet)

Type of monument: Harrison, 4" disk 'Section Corner'

Depth: Flush with adjacent ground

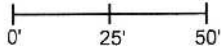
Indiana tie card references:

IN02\_T20NR2W34\_80 IN02\_T20NR2W35\_72

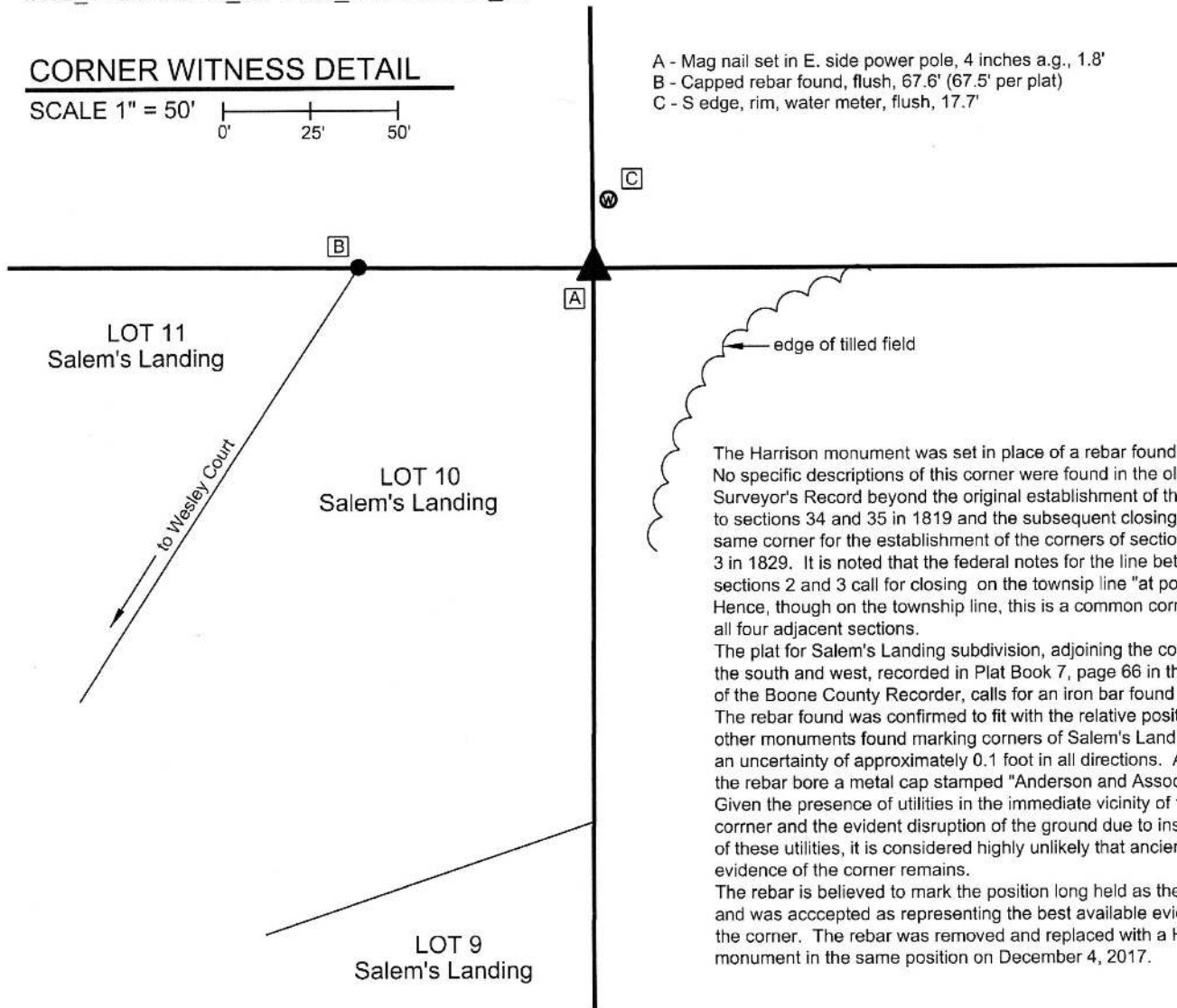
IN02\_T19NR2W03\_08 IN02\_T19NR2W02\_00

### CORNER WITNESS DETAIL

SCALE 1" = 50'



- A - Mag nail set in E. side power pole, 4 inches a.g., 1.8'
- B - Capped rebar found, flush, 67.6' (67.5' per plat)
- C - S edge, rim, water meter, flush, 17.7'



The Harrison monument was set in place of a rebar found. No specific descriptions of this corner were found in the old BCS Surveyor's Record beyond the original establishment of the corner to sections 34 and 35 in 1819 and the subsequent closing on the same corner for the establishment of the corners of sections 2 and 3 in 1829. It is noted that the federal notes for the line between sections 2 and 3 call for closing on the township line "at post." Hence, though on the township line, this is a common corner for all four adjacent sections.

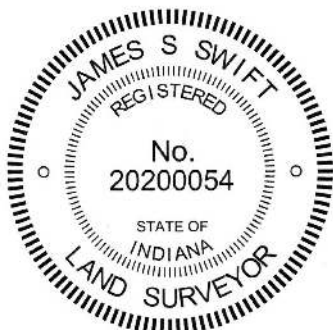
The plat for Salem's Landing subdivision, adjoining the corner to the south and west, recorded in Plat Book 7, page 66 in the Office of the Boone County Recorder, calls for an iron bar found in place. The rebar found was confirmed to fit with the relative positions of other monuments found marking corners of Salem's Landing, with an uncertainty of approximately 0.1 foot in all directions. As found, the rebar bore a metal cap stamped "Anderson and Associates." Given the presence of utilities in the immediate vicinity of the corner and the evident disruption of the ground due to installation of these utilities, it is considered highly unlikely that ancient evidence of the corner remains.

The rebar is believed to mark the position long held as the corner and was accepted as representing the best available evidence of the corner. The rebar was removed and replaced with a Harrison monument in the same position on December 4, 2017.

Sugar Creek Twp

Section 34 T20N, R2W	Section 35 T20N, R2W
Section 3 T19N, R2W	Section 2 T19N, R2W

An arrow points upwards from the center of the bottom row to the center of the top row, indicating the township line.



*Kenneth E. Hedge*  
Kenneth E. Hedge, County Surveyor

*James S. Swift*  
James S. Swift, IN LS 20200054  
January 17, 2018

# SECTION CORNER RECORD

NW 600-900

## BOONE COUNTY SURVEYOR'S OFFICE

Data for Corner 2 only:

State Plane grid coordinates NAD83 (2011):

North: 1777403.22 East: 3077228.52 (U.S. survey feet)

Type of monument: Harrison, 4" disk 'Section Corner'

Depth: One inch above adjacent ground

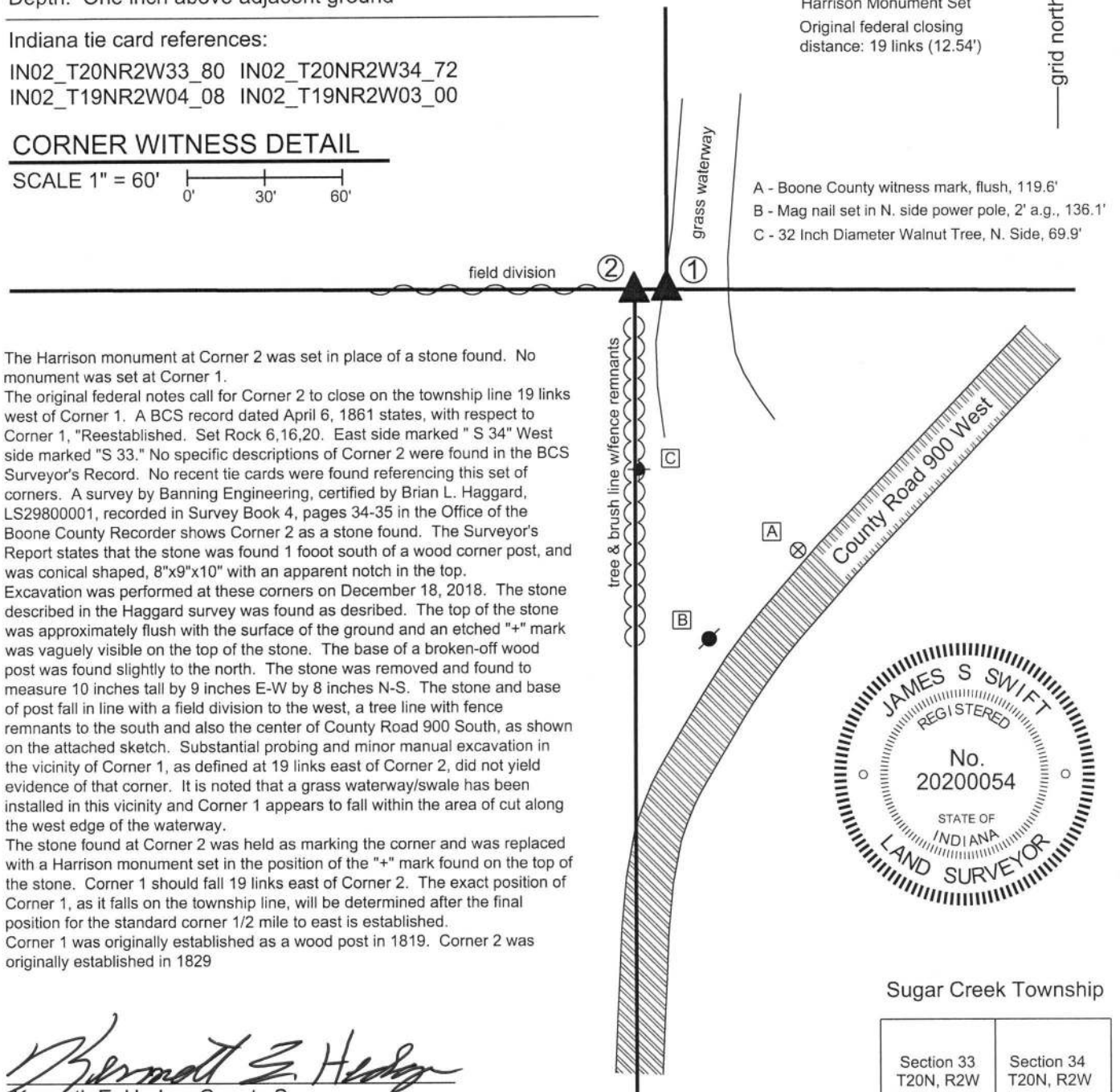
Indiana tie card references:

IN02\_T20NR2W33\_80 IN02\_T20NR2W34\_72  
 IN02\_T19NR2W04\_08 IN02\_T19NR2W03\_00

### CORNER WITNESS DETAIL

SCALE 1" = 60'

- ① S.E. Corner, Section 33  
 S.W. Corner, Section 34  
 T 20 N, R 2 W  
 Final position not determined
- ② N.W. Corner, Section 3  
 N.E. Corner, Section 4  
 Harrison Monument Set  
 Original federal closing  
 distance: 19 links (12.54')

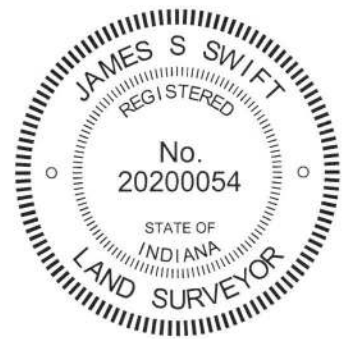


The Harrison monument at Corner 2 was set in place of a stone found. No monument was set at Corner 1.

The original federal notes call for Corner 2 to close on the township line 19 links west of Corner 1. A BCS record dated April 6, 1861 states, with respect to Corner 1, "Reestablished. Set Rock 6,16,20. East side marked " S 34" West side marked "S 33." No specific descriptions of Corner 2 were found in the BCS Surveyor's Record. No recent tie cards were found referencing this set of corners. A survey by Banning Engineering, certified by Brian L. Haggard, LS29800001, recorded in Survey Book 4, pages 34-35 in the Office of the Boone County Recorder shows Corner 2 as a stone found. The Surveyor's Report states that the stone was found 1 foot south of a wood corner post, and was conical shaped, 8"x9"x10" with an apparent notch in the top. Excavation was performed at these corners on December 18, 2018. The stone described in the Haggard survey was found as described. The top of the stone was approximately flush with the surface of the ground and an etched "+" mark was vaguely visible on the top of the stone. The base of a broken-off wood post was found slightly to the north. The stone was removed and found to measure 10 inches tall by 9 inches E-W by 8 inches N-S. The stone and base of post fall in line with a field division to the west, a tree line with fence remnants to the south and also the center of County Road 900 South, as shown on the attached sketch. Substantial probing and minor manual excavation in the vicinity of Corner 1, as defined at 19 links east of Corner 2, did not yield evidence of that corner. It is noted that a grass waterway/swale has been installed in this vicinity and Corner 1 appears to fall within the area of cut along the west edge of the waterway.

The stone found at Corner 2 was held as marking the corner and was replaced with a Harrison monument set in the position of the "+" mark found on the top of the stone. Corner 1 should fall 19 links east of Corner 2. The exact position of Corner 1, as it falls on the township line, will be determined after the final position for the standard corner 1/2 mile to east is established.

Corner 1 was originally established as a wood post in 1819. Corner 2 was originally established in 1829



*Kenneth E. Hedge*  
 Kenneth E. Hedge, County Surveyor

*James S. Swift*  
 James S. Swift, IN LS 20200054  
 January 9, 2019

Sugar Creek Township

Section 33 T20N, R2W	Section 34 T20N, R2W
Section 4 T19N, R2W	Section 3 T19N, R2W

# SECTION CORNER RECORD

## BOONE COUNTY SURVEYOR'S OFFICE

NW 700-900

State Plane grid coordinates NAD83 (CORS96):

North: 1782726.77 East: 3077227.80 (U.S. survey feet)

Type of monument: Harrison, 4" disk 'Section Corner'

Depth: generally flush with ground along steep hillside

Indiana tie card references:

IN02\_T20NR2W28\_80 IN02\_T20NR2W27\_72

IN02\_T20NR2W33\_08 IN02\_T20NR2W34\_00

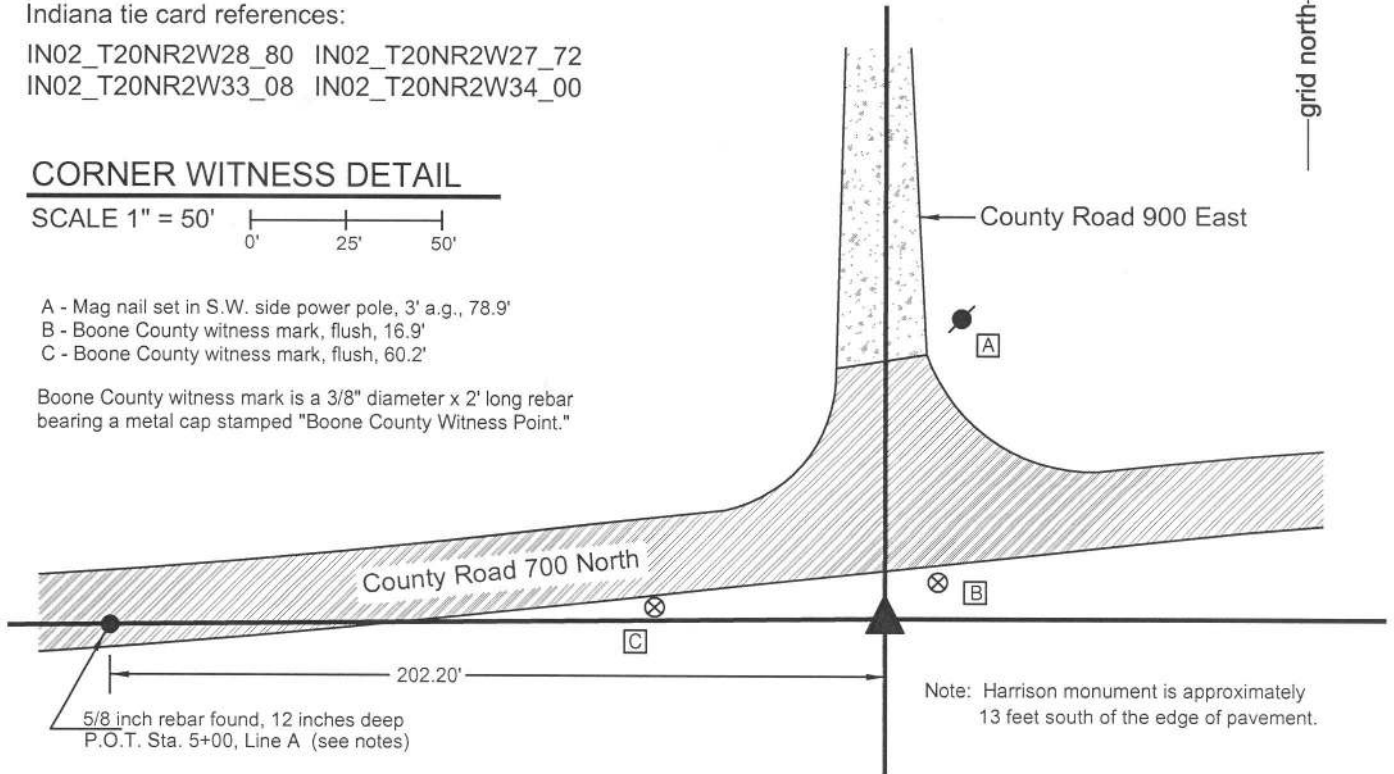


### CORNER WITNESS DETAIL

SCALE 1" = 50'

- A - Mag nail set in S.W. side power pole, 3' a.g., 78.9'
- B - Boone County witness mark, flush, 16.9'
- C - Boone County witness mark, flush, 60.2'

Boone County witness mark is a 3/8" diameter x 2' long rebar bearing a metal cap stamped "Boone County Witness Point."



The Harrison monument was set in a calculated position per bridge plans.

No specific descriptions of this corner were found in the old BCS Surveyor's Record, nor were any recent BCS tie cards found referencing this corner. Significant excavation was not performed at this corner due to the fact that it is situated in an area of significant fill material associated with the approach to a bridge over Sugar Creek immediately to the east. The position of this corner was determined in October 2014. During reconnaissance beginning October 16, 2014 no monumentation was found marking the corner. The plans for the adjacent bridge were provided by the Boone County Highway Department. These plans are dated June 6, 1995, referenced as project BRO-9906. These plans show the corner as being a "Blt. Spike, Sec. Cor." and reference the corner as being at Sta. P.O.T. 7+02.20, Line A. The original control monuments for the bridge plans are a rebar at P.O.T. 5+00.00, Line A and a rebar at P.O.T. 18+41.93, Line A. Both of these rebars were recovered, apparently undisturbed, and located at the proper distance apart from each other, per the stations. The rebar at 5+00 is in the road 12 inches deep and the rebar at 18+41.93 is in the road 3 inches deep. These two rebars were held as defining line A for the bridge plans. The section corner was established at 202.20 feet east of the rebar at station 5+00 and a Harrison monument was set at this position. It is noted that the plans graphically demonstrate this corner as having been in the center of the T-intersection of the two roads, prior to reconstruction of the roads. This position did fit well with the centers of the road north and west, as they are located beyond the areas of reconstruction. Furthermore, this position fit well with the relative positions of a stone found at the quarter section corner 1/2 mile west and the approximate location of the quarter-quarter corner 1/4 mile west, being in the center of the east-west road and in line with an old fence to the north. It is further noted that excavation was performed at this quarter-quarter corner but no physical evidence of the corner was found except the road and fence. The Harrison monument is set within a section of 10 inch diameter HDPE storm pipe set vertically, 22 inches tall, filled with concrete. This monument falls along the slope of the fill area approximately 13 feet south of the south edge of pavement of the road, in line with the center of the road to the north. This corner was originally established as a wood post in 1829.



*Kenneth E. Hedge*  
 Kenneth E. Hedge, County Surveyor

*James S. Swift*  
 James S. Swift, IN LS 20200054  
 March 27, 2015

Sugar Creek Twp.

Section 28 T20N, R2W	Section 27 T20N, R2W
Section 33 T20N, R2W	Section 34 T20N, R2W