

SECTION CORNER RECORD

NE 650-900

BOONE COUNTY SURVEYOR'S OFFICE

State Plane grid coordinates NAD83 (CORS96):

North: 1781148.04 East: 3172080.72 (U.S. survey feet)

Type of monument: Harrison, 4" disk 'Section Corner'

Depth: One inch below adjacent road surface

Indiana tie card references:

IN02_T20NR2E33_44 IN02_T20NR2E34_36

CORNER WITNESS DETAIL

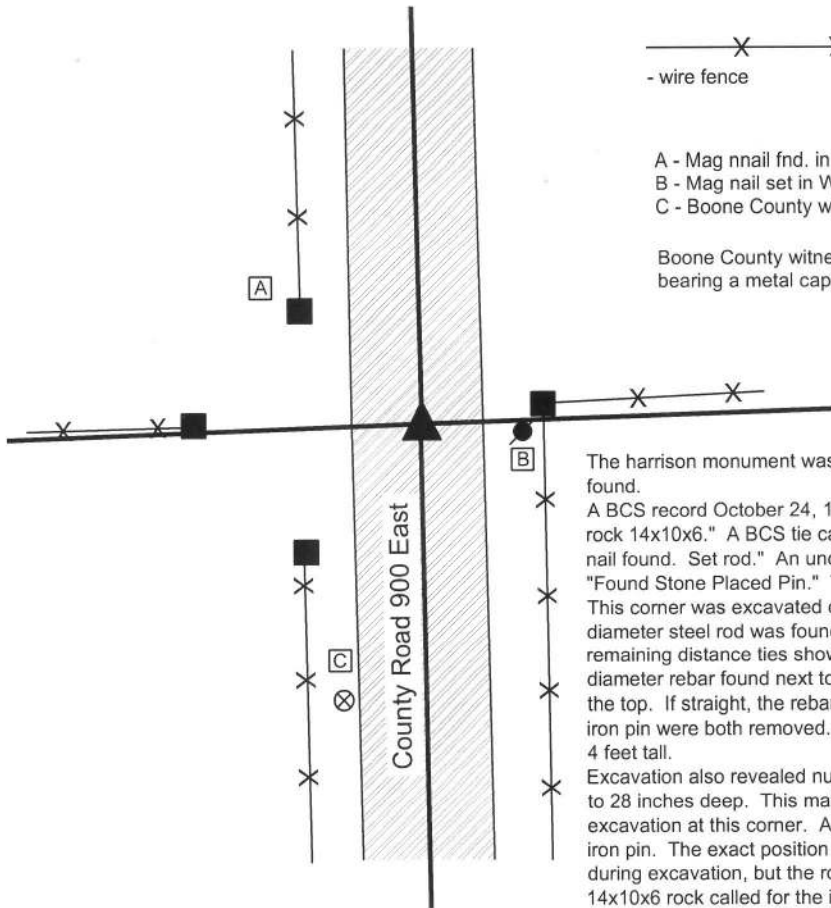
SCALE 1" = 30'



- wire fence

- A - Mag nail fnd. in S.E. corner wood post, 1.5 a.g., 25.33'
- B - Mag nail set in W. side power pole, 2' a.g., 14.38'
- C - Boone County witness mark, flush, 44.94'

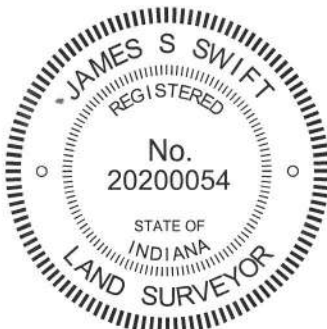
Boone County witness mark is a 3/8" diameter x 2' long rebar bearing a metal cap stamped "Boone County Witness Point."



The Harrison monument was set in place of a 3/4 inch diameter solid steel rod found.

A BCS record October 24, 1907 states "Located in line with A & G and set a rock 14x10x6." A BCS tie card dated May 8, 1975 states "No stone found. PK nail found. Set rod." An undated tied card with the name I.D. Miller states "Found Stone Placed Pin." The distance ties are identical on the two tie cards. This corner was excavated on June 13, 2013. Prior to excavation a 3/4 inch diameter steel rod was found at the surface, in agreement with the two remaining distance ties shown on the tie cards. Excavation revealed a 1/2 inch diameter rebar found next to the steel rod. The rebar was bent at 7 inches from the top. If straight, the rebar would have been 5 inches deep. The rebar and iron pin were both removed. The rebar was 16 inches tall and the steel rod was 4 feet tall.

Excavation also revealed numerous pieces of asphalt in the fill material, from 20 to 28 inches deep. This material was accepted as evidence of previous excavation at this corner. A small rock (7"x4"x4") was found in the area of the iron pin. The exact position of the rock was not determined as it was displaced during excavation, but the rock did not match or approximate the dimensions of 14x10x6 rock called for in the 1907 record. It may have been the rock mentioned on the undated tie card. An area being 5 foot N-S by 5 foot E-W, area centered on the position of the steel rod, was excavated to a depth of 3 feet, well into the clay layer below the road. This excavation yielded no further evidence of the corner. Probing to 2 feet deeper and 1 foot further west also yielded no further evidence. The position of the steel rod, as originally found, was held as the corner. A Harrison monument was set in this position. This corner was originally established as a wood post in 1821.



Kenneth E. Hedge

 Kenneth E. Hedge, County Surveyor

James S. Swift

 James S. Swift, IN LS 20200054
 February 5, 2015

Marion Township

| | | |
|-------------------------|---|-------------------------|
| Section 33 T20N, R2E | ▲ | Section 34 T20N, R2E |
|-------------------------|---|-------------------------|

SECTION CORNER RECORD

NE 650-1000

BOONE COUNTY SURVEYOR'S OFFICE

State Plane grid coordinates NAD83 (CORS96):

North: 1781316.19 East: 3177384.30 (U.S. survey feet)

Type of monument: Harrison, 4" disk 'Section Corner'

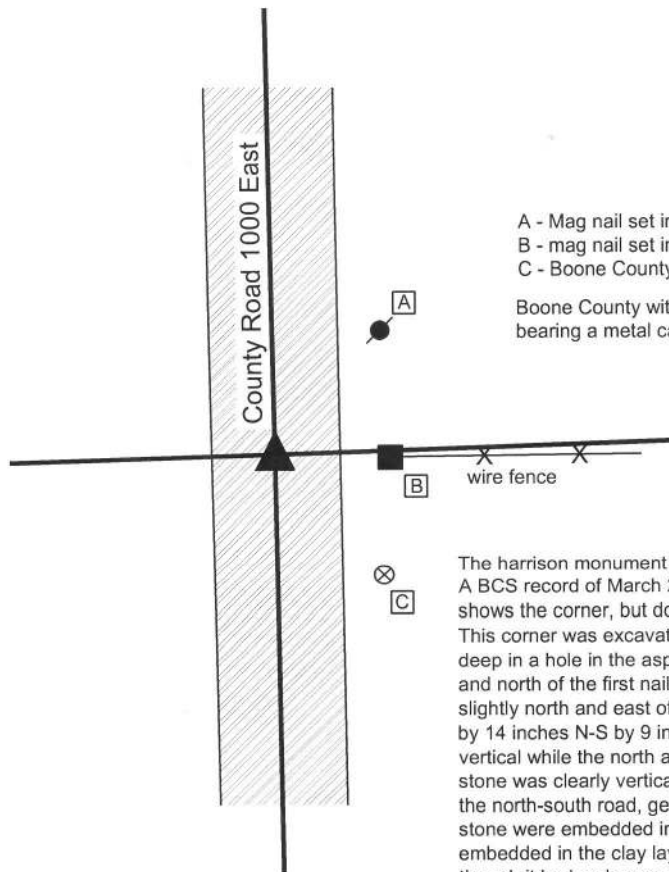
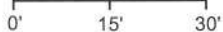
Depth: One inch below adjacent road surface

Indiana tie card references:

IN02_T20NR2E34_44 IN02_T20NR2E35_36

CORNER WITNESS DETAIL

SCALE 1" = 30'



- A - Mag nail set in S.W. side power pole, 2' a.g., 23.94'
- B - mag nail set in S.W. side wood end post, 2' a.g., 17.66'
- C - Boone County witness mark, flush, 25.42'

Boone County witness mark is a 3/8" diameter x 2' long rebar bearing a metal cap stamped "Boone County Witness Point."



The harrison monument was set in place of the top, high point of a stone found. A BCS record of March 25, 1853 states "Stone Set." A BCS tie card dated January 18, 1994 shows the corner, but does not specify a monument at the corner. This corner was excavated on July 24, 2013. Prior to excavation a nail was found at 2 inches deep in a hole in the asphalt roadway. Excavation revealed another nail found slightly below and north of the first nail. Further excavation revealed a stone found at 2 inches deep, slightly north and east of the nails. Full excavation of the stone revealed it to be 19 inches tall by 14 inches N-S by 9 inches E-W. The east and west sides of the stone were flat and vertical while the north and south sides were more sloping. The overall orientation of the stone was clearly vertical and oriented in cardinal directions. The stone was in the center of the north-south road, generally in line with the fence to the east. The top 8 inches of the stone were embedded in the asphalt roadway. The bottom 9 inches of the stone were embedded in the clay layer below the road bed. No specific marks were found on the stone, though it had a clear and distinct high point. The stone did not appear to be disturbed. The stone was removed and a harrison monument was set in place of the top, high point of the stone. The nails, removed during excavation had been approximately 0.3 foot west and 0.9 foot south of the top, high point of the stone. This corner was originally established as a wood post in 1821.

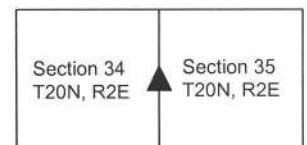


Kenneth E. Hedge
Kenneth E. Hedge, County Surveyor

James S. Swift
James S. Swift, IN LS 20200054

February 5, 2015

Marion Township



PHOTOGRAPHIC DOCUMENTATION

Date of photography: July 24, 2013

View of the stone as first exposed.



The stone, removed from the road.



View of the stone from the north, looking south along C.R. 1000 East.



View of the stone from the east, looking down the fence line to the east.



For details and documentation, refer to related sheet "Section Corner Record."

SECTION CORNER RECORD

BOONE COUNTY SURVEYOR'S OFFICE

NE 700-900

State Plane grid coordinates NAD83 (CORS96):

North: 1783792.92 East: 3172020.45 (U.S. survey feet)

Type of monument: Harrison, 4" disk 'Section Corner'

Depth: One inch below adjacent road surface

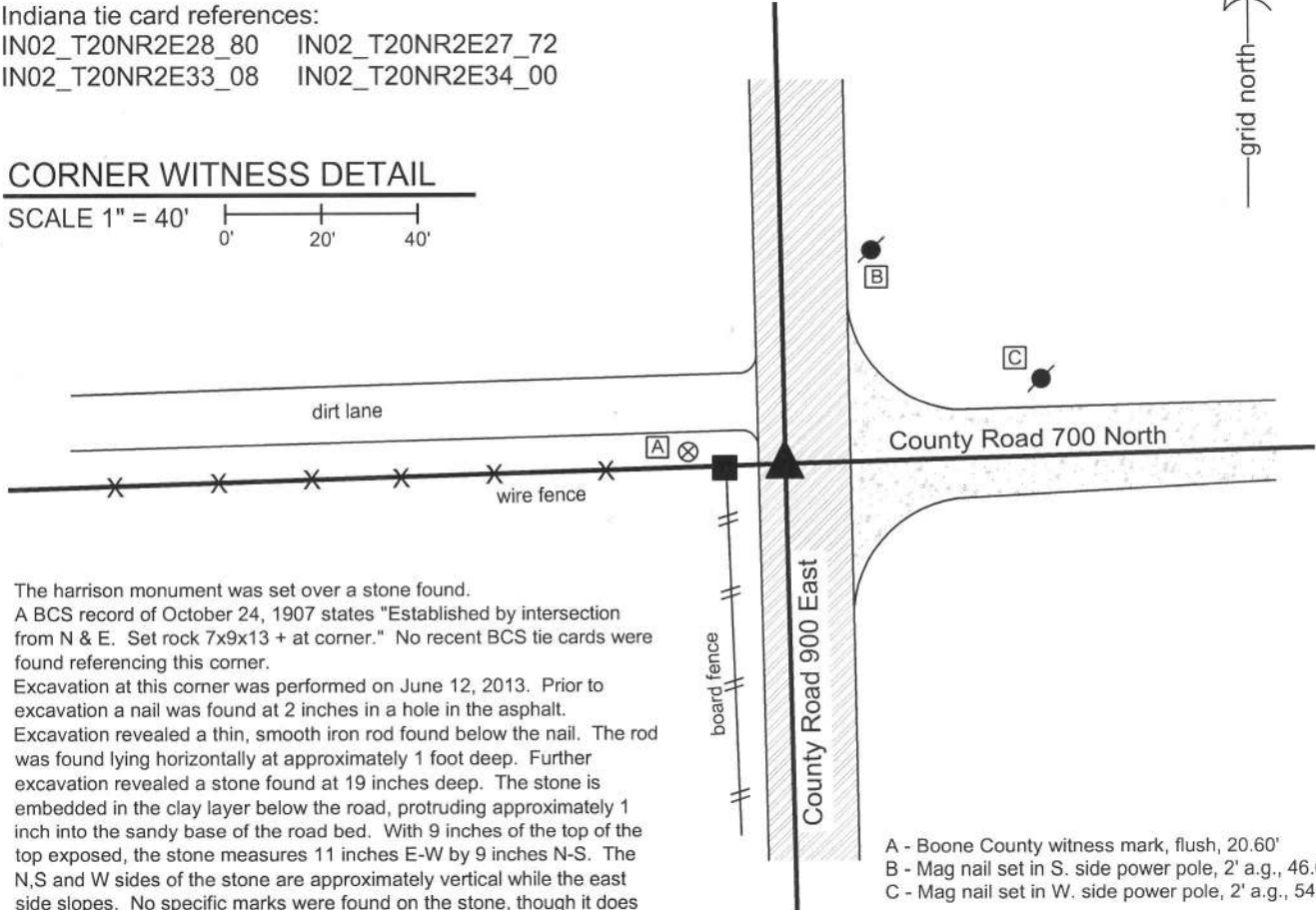
Indiana tie card references:

IN02_T20NR2E28_80 IN02_T20NR2E27_72

IN02_T20NR2E33_08 IN02_T20NR2E34_00

CORNER WITNESS DETAIL

SCALE 1" = 40'



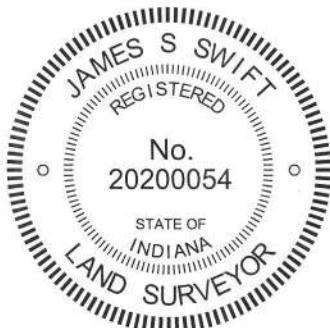
The harrison monument was set over a stone found.
 A BCS record of October 24, 1907 states "Established by intersection from N & E. Set rock 7x9x13 + at corner." No recent BCS tie cards were found referencing this corner.

Excavation at this corner was performed on June 12, 2013. Prior to excavation a nail was found at 2 inches in a hole in the asphalt. Excavation revealed a thin, smooth iron rod found below the nail. The rod was found lying horizontally at approximately 1 foot deep. Further excavation revealed a stone found at 19 inches deep. The stone is embedded in the clay layer below the road, protruding approximately 1 inch into the sandy base of the road bed. With 9 inches of the top of the top exposed, the stone measures 11 inches E-W by 9 inches N-S. The N,S and W sides of the stone are approximately vertical while the east side slopes. No specific marks were found on the stone, though it does have a distinct high point at the top, near the west edge. The stone appears to be slightly larger than that described in the 1907 record though of similar proportions in the E-W and N-S dimensions. It is not clear whether this is the same monument as described in the 1907 record. The stone is west of the center of the road at the intersection but in line with the center of the road extended north and south. The stone is in line with the fence to the west and the road to the east. The stone was left in place and a harrison monument was set over the top, high point of the stone. The nail, removed during excavation, had been 0.4 foot north and 2.5 feet east of the stone.

This corner was originally established as a wood post in 1821.

- A - Boone County witness mark, flush, 20.60'
- B - Mag nail set in S. side power pole, 2' a.g., 46.64'
- C - Mag nail set in W. side power pole, 2' a.g., 54.44'

Boone County witness mark is a 3/8" diameter x 2' long rebar bearing a metal cap stamped "Boone County Witness Point."



Kenneth E. Hedge
 Kenneth E. Hedge, County Surveyor

James S. Swift
 James S. Swift, IN LS 20200054
 February 5, 2015

Marion Township

| | |
|-------------------------|-------------------------|
| Section 28 T20N, R2E | Section 27 T20N, R2E |
| Section 33 T20N, R2E | Section 34 T20N, R2E |

PHOTOGRAPHIC DOCUMENTATION

Date of photography: June 12, 2013

View of the stone as first exposed.



View of the stone from above.



View from the north,
looking south along C.R. 900 East.



View from the east,
looking west along the adjacent fence line.



For details and documentation, refer to related sheet "Section Corner Record."

SECTION CORNER RECORD

NE 700-950

BOONE COUNTY SURVEYOR'S OFFICE

State Plane grid coordinates NAD83 (2011):

North: 1783868.89 East: 3174677.74 (U.S. survey feet)

Type of monument: Harrison, 4" disk 'Section Corner'

Depth: six inches below adjacent road surface

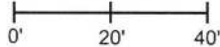
Indiana tie card references:

IN02_T20NR2E27_76

IN02_T20NR2E34_04

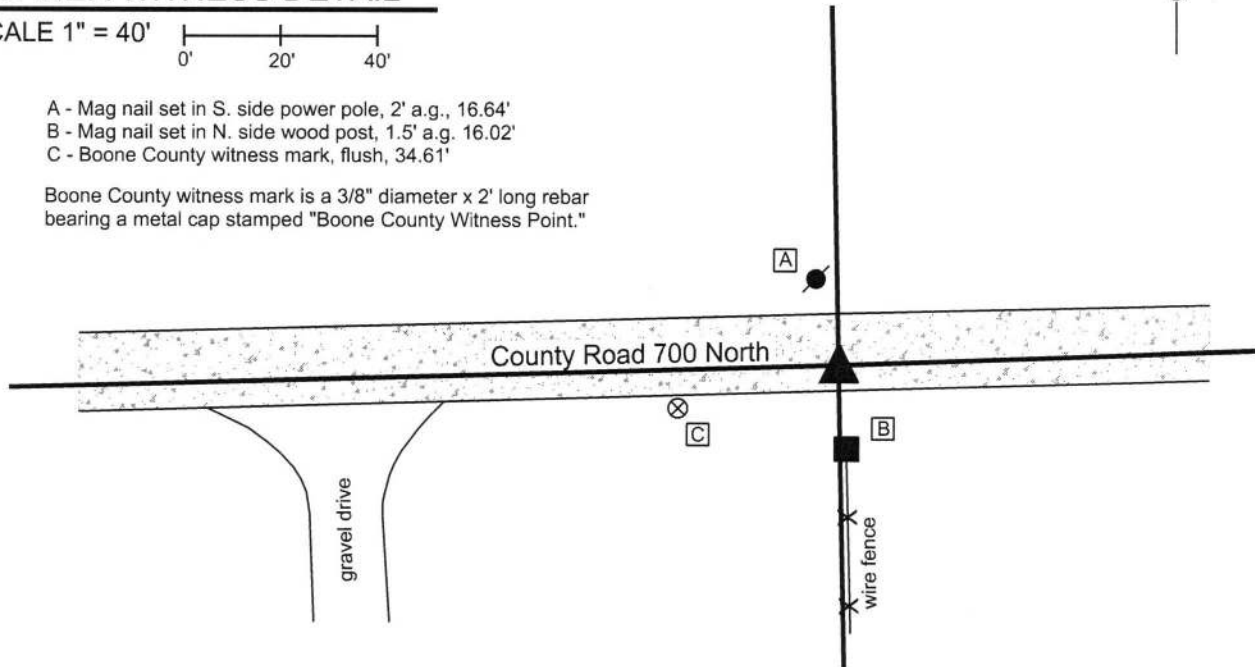
CORNER WITNESS DETAIL

SCALE 1" = 40'



- A - Mag nail set in S. side power pole, 2' a.g., 16.64'
- B - Mag nail set in N. side wood post, 1.5' a.g. 16.02'
- C - Boone County witness mark, flush, 34.61'

Boone County witness mark is a 3/8" diameter x 2' long rebar bearing a metal cap stamped "Boone County Witness Point."



The harrison monument was set over a stone found.

A BCS record of April 27-28, 1874 states "Reestablished from stumps of both trees, set a rock 16,8 by 8 +." A BCS tie card dated August 10, 1974 states "No stone found."

This corner was excavated on July 20, 2013. Prior to excavation a railroad spike was found at 4 inches deep in the gravel road, disturbed and leaning to the south. Excavation revealed a stone found at 8 inches deep, embedded in the clay layer below the road bed. The stone has a clear and distinct etched "+" mark on the top. With the top 10 inches of the stone exposed, it measured 8 inches E-W by 8 inches N-S. The stone was accepted as being the same monument described in the 1874 record. The etched mark is slightly east of the high point of the sloping top of the stone but appeared to be over the approximate center of mass of the stone. The stone was left in place, the top 10 inches were encased in concrete and a short harrison monument was set directly over the etched "+" mark on the stone. The railroad spike, removed during excavation, had been 0.4 foot north and 0.9 foot east of the stone.

This corner was originally established as a wood post in 1821.




Kenneth E. Hedge, County Surveyor


James S. Swift, IN LS 20200054

February 5, 2015, revised May 17, 2016

Marion Township

Section 27
T20N, R2E

▲
Section 34
T20N, R2E

PHOTOGRAPHIC DOCUMENTATION

Date of photography: July 24, 2013

The stone from above and east, dry.



The stone from above and east, wet.



View from the east, looking across the stone and west along C.R. 700 North.



View from the north, looking across the stone and south along the adjacent fence.



For details and documentation, refer to related sheet "Section Corner Record."

SECTION CORNER RECORD

NE 700-1000

BOONE COUNTY SURVEYOR'S OFFICE

State Plane grid coordinates NAD83 (CORS96):
North: 1783963.61 East: 3177327.06 (U.S. survey feet)

Type of monument: Harrison, 4" disk 'Section Corner'
Depth: One inch below adjacent road surface

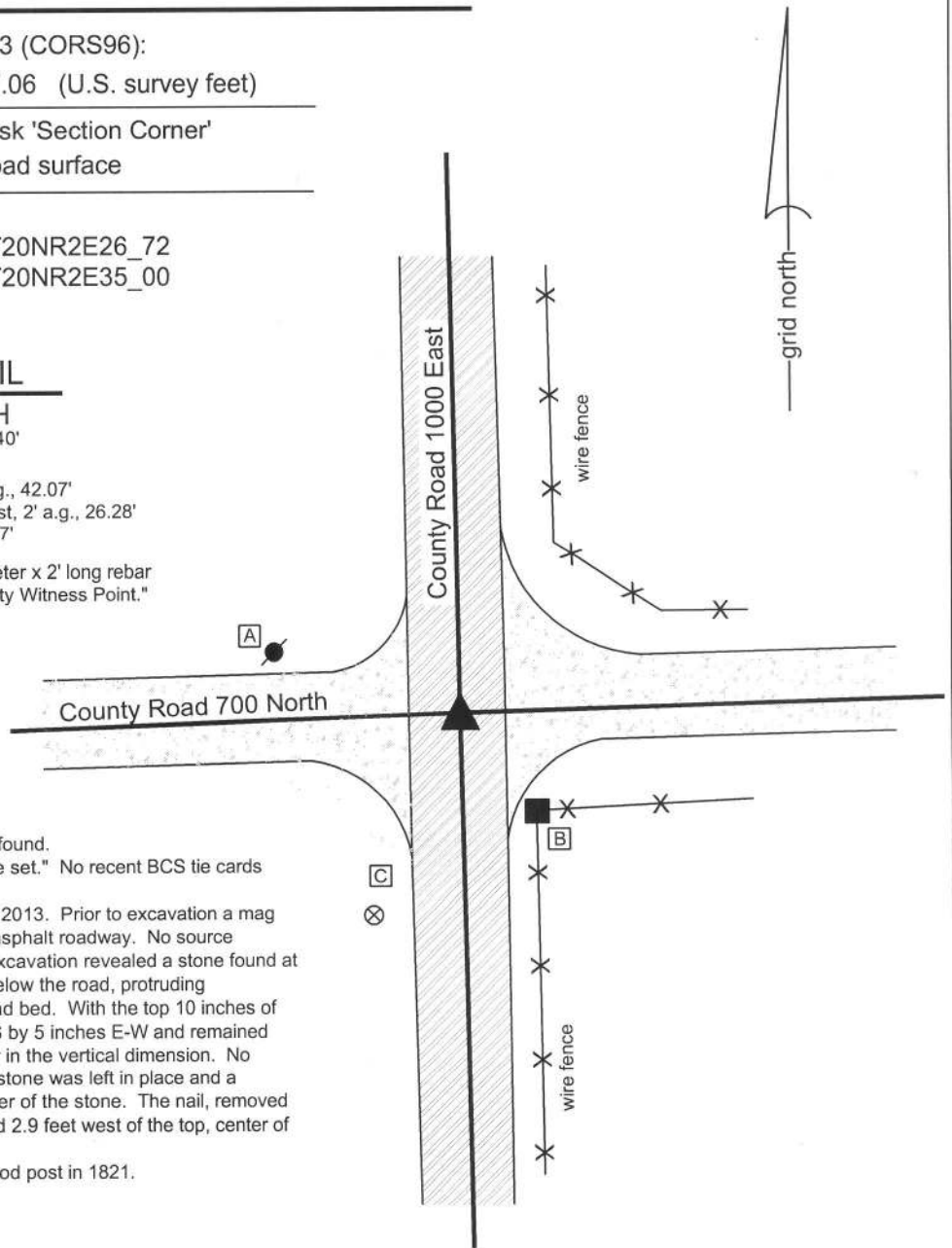
Indiana tie card references:
IN02_T20NR2E12_80 IN02_T20NR2E26_72
IN02_T20NR2E34_08 IN02_T20NR2E35_00

CORNER WITNESS DETAIL

SCALE 1" = 40'
0' 20' 40'

- A - Mag nail set in S. side power pole, 2' a.g., 42.07'
- B - Mag nail set in W. side, wood corner post, 2' a.g., 26.28'
- C - Boone County witness mark, flush, 46.97'

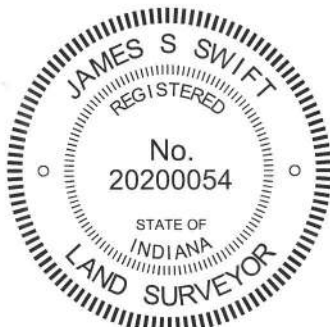
Boone County witness mark is a 3/8" diameter x 2' long rebar bearing a metal cap stamped "Boone County Witness Point."



The harrison monument was set over a stone found. A BCS record of March 25, 1853 states "Stone set." No recent BCS tie cards were found referencing this corner.

Excavation at this corner occurred on July 25, 2013. Prior to excavation a mag nail was found at 1 inch deep in a hole in the asphalt roadway. No source documentation was found for this mag nail. Excavation revealed a stone found at 20 inches deep, embedded in the clay layer below the road, protruding approximately 1 inch into the bottom of the road bed. With the top 10 inches of the stone exposed, it measured 12 inches N-S by 5 inches E-W and remained stable in the clay, indicating that it is yet larger in the vertical dimension. No specific marks were found on the stone. The stone was left in place and a harrison monument was set over the top, center of the stone. The nail, removed during excavation, had been 0.6 foot north and 2.9 feet west of the top, center of the stone.

This corner was originally established as a wood post in 1821.



Kenneth E. Hedge
Kenneth E. Hedge, County Surveyor

James S. Swift
James S. Swift, IN LS 20200054
February 5, 2015

Marion Township

| | |
|-------------------------|-------------------------|
| Section 27 T20N, R2E | Section 26 T20N, R2E |
| Section 34 T20N, R2E | Section 35 T20N, R2E |

PHOTOGRAPHIC DOCUMENTATION

Date of photography: July 25, 2013

View of the stone from above and south.



View of the stone from above.



View from above the stone,
looking south along County Road 1000 East..



View from above the stone,
looking west along County Road 700 North.



For details and documentation, refer to related sheet "Section Corner Record."