

SECTION CORNER RECORD

NE 050-400

BOONE COUNTY SURVEYOR'S OFFICE

State Plane grid coordinates NAD83 (2011):

North: 1748431.03 East: 3145768.58 (U.S. survey feet)

Type of monument: Harrison, 4" disk 'Section Corner'

Depth: Three inches below adjacent gravel road surface

Indiana tie card references:

IN02_T19NR1E34_44 IN02_T19NR1E35_36

A - Mag nail set in N.W. edge power pole, 2' a.g., 23.8'
B - Mag nail set in E. edge power pole, 2' a.g., 40.6'
C - Mag nail set in S. edge wood post, 1; a.g., 38.3'

CORNER WITNESS DETAIL

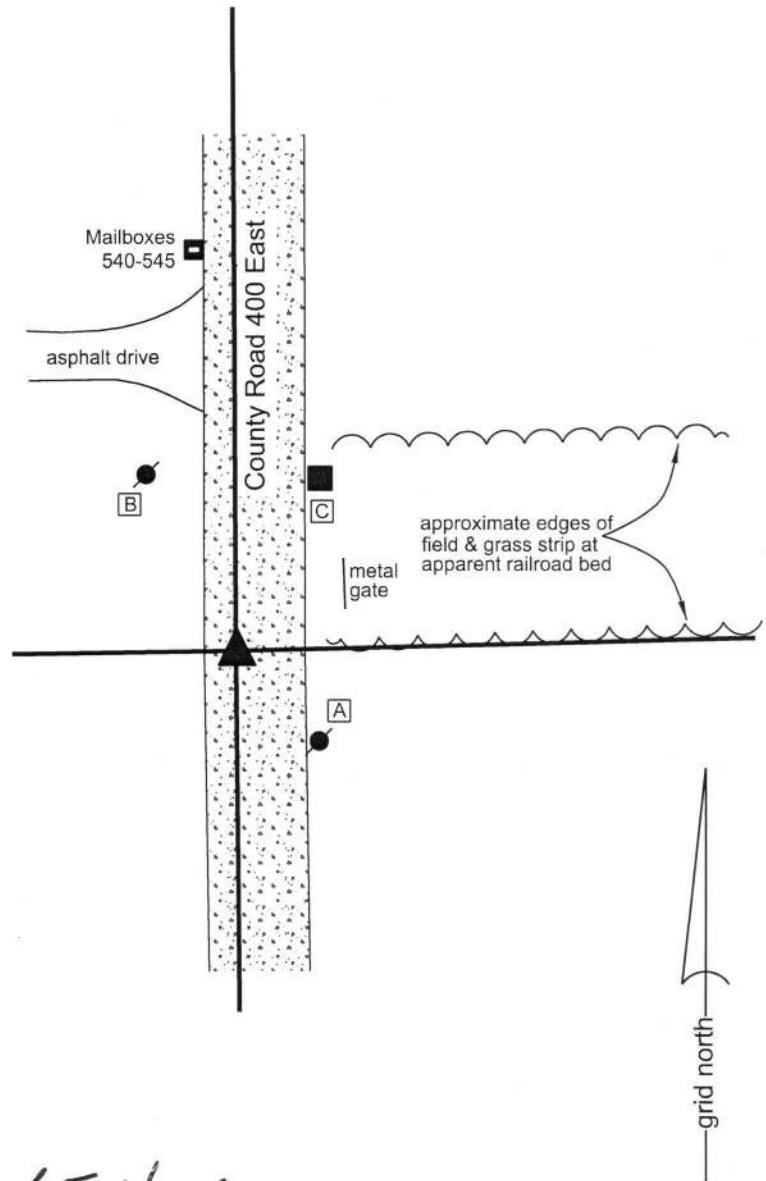
SCALE 1" = 40'



The Harrison monument was set in place of a Harrison monument found.
A BCS record of February, 1871 states, with respect to this corner, "Reestablished from stump of sugar, set rock 16.12.8 +." A BCS tie card dated July 28, 2005 shows the corner as a Harrison monument with no reference to source. A survey dated November 21, 1996 by Jerry L. Carter, LS #S0350 and recorded April 30, 2008 as Instrument 200800004538 in the Office of the Boone County Recorder shows the corner as a rebar found. The position of the rebar shown on the Carter survey precisely matches the position of the found Harrison monument with respect to other monuments and corners shown on the survey.

This corner was excavated on April 6, 2018. Prior to excavation, the Harrison monument shown on the 2005 tie card was found in good condition. Excavation of an area extending 6 feet north, 2 feet south, 1.5 feet west and 4 feet east of the found monument revealed no further evidence of the corner. Several rocks of dimensions up to 7x7x7 inches were found at the bottom of the road bed. All of these stones are considered to be base material for the road and were not held as evidence of the corner. This corner falls within or near the right-of-way of the old Midland Railroad. Remains of old railroad ties were found at the north edge of the area of excavation. Due to the disturbance to the road bed associated with the installation of the railroad, it is considered highly unlikely that the stone described in the 1871 record would yet be present if it had been any further north than the area which was excavated.

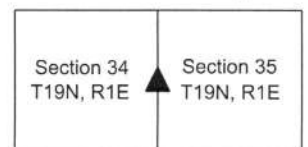
The position of the found Harrison monument was held as marking the corner and the monument was replaced with a new, identical monument in the same position.
This corner was originally established as a wood post in 1821.



Kenneth E. Hedge
Kenneth E. Hedge, County Surveyor

James S. Swift
James S. Swift, IN LS 20200054
May 30, 2018

Center Township



SECTION CORNER RECORD

NE 100-300

BOONE COUNTY SURVEYOR'S OFFICE

State Plane grid coordinates NAD83 (CORS96):

North: 1751007.27 East: 3140451.53 (U.S. survey feet)

Type of monument: Harrison, 4" disk 'Section Corner'

Depth: One inch below adjacent road surface

Indiana tie card references:

IN02_T19NR1E27_72

IN02_T19NR1E28_80

IN02_T19NR1E33_08

IN02_T19NR1E34_00

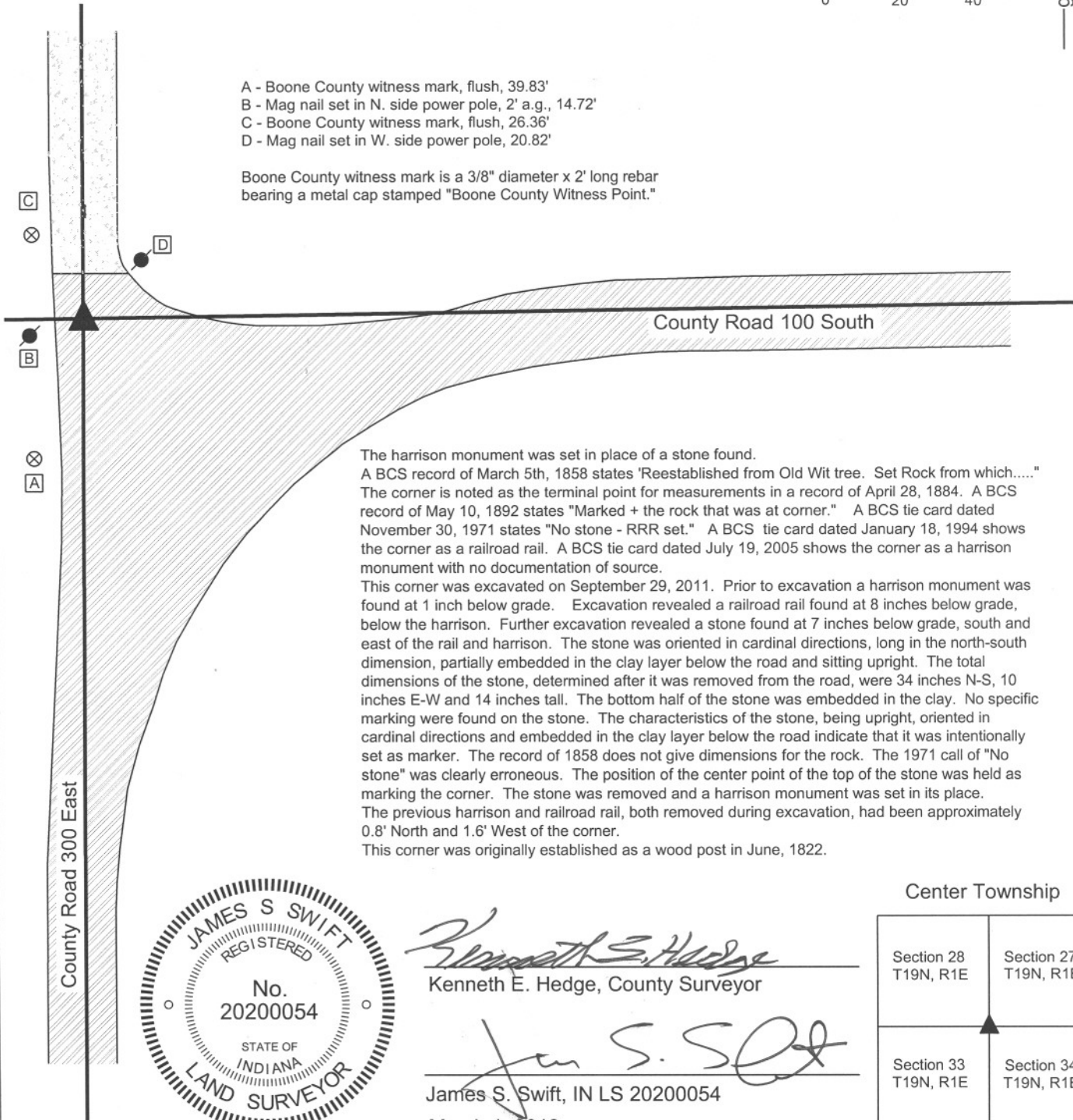
CORNER WITNESS DETAIL

SCALE 1" = 40'



- A - Boone County witness mark, flush, 39.83'
- B - Mag nail set in N. side power pole, 2' a.g., 14.72'
- C - Boone County witness mark, flush, 26.36'
- D - Mag nail set in W. side power pole, 20.82'

Boone County witness mark is a 3/8" diameter x 2' long rebar bearing a metal cap stamped "Boone County Witness Point."

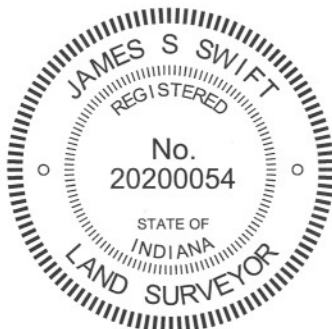


The harrison monument was set in place of a stone found.

A BCS record of March 5th, 1858 states "Reestablished from Old Wit tree. Set Rock from which....." The corner is noted as the terminal point for measurements in a record of April 28, 1884. A BCS record of May 10, 1892 states "Marked + the rock that was at corner." A BCS tie card dated November 30, 1971 states "No stone - RRR set." A BCS tie card dated January 18, 1994 shows the corner as a railroad rail. A BCS tie card dated July 19, 2005 shows the corner as a harrison monument with no documentation of source.

This corner was excavated on September 29, 2011. Prior to excavation a harrison monument was found at 1 inch below grade. Excavation revealed a railroad rail found at 8 inches below grade, below the harrison. Further excavation revealed a stone found at 7 inches below grade, south and east of the rail and harrison. The stone was oriented in cardinal directions, long in the north-south dimension, partially embedded in the clay layer below the road and sitting upright. The total dimensions of the stone, determined after it was removed from the road, were 34 inches N-S, 10 inches E-W and 14 inches tall. The bottom half of the stone was embedded in the clay. No specific marking were found on the stone. The characteristics of the stone, being upright, oriented in cardinal directions and embedded in the clay layer below the road indicate that it was intentionally set as marker. The record of 1858 does not give dimensions for the rock. The 1971 call of "No stone" was clearly erroneous. The position of the center point of the top of the stone was held as marking the corner. The stone was removed and a harrison monument was set in its place. The previous harrison and railroad rail, both removed during excavation, had been approximately 0.8' North and 1.6' West of the corner.

This corner was originally established as a wood post in June, 1822.



Kenneth E. Hedge
 Kenneth E. Hedge, County Surveyor

James S. Swift
 James S. Swift, IN LS 20200054
 March 1, 2012

Center Township

Section 28 T19N, R1E	Section 27 T19N, R1E
Section 33 T19N, R1E	Section 34 T19N, R1E

PHOTOGRAPHIC DOCUMENTATION

Date of photography: September 29, 2011

View of the stone as first exposed.



View of the stone with more exposed.



View of the stone from the west, looking down county Road 100 North from the intersection.



For details and documentation, refer to related sheet "Section Corner Record."

SECTION CORNER RECORD

BOONE COUNTY SURVEYOR'S OFFICE

NE 100-350

State Plane grid coordinates NAD83 (CORS96):

North: 1751043.88 East: 3143103.22 (U.S. survey feet)

Type of monument: Harrison, 4" disk 'Section Corner'

Depth: One inch below adjacent road surface

Indiana tie card references:

IN02_T19NR1E27_76

IN02_T19NR1E34_04



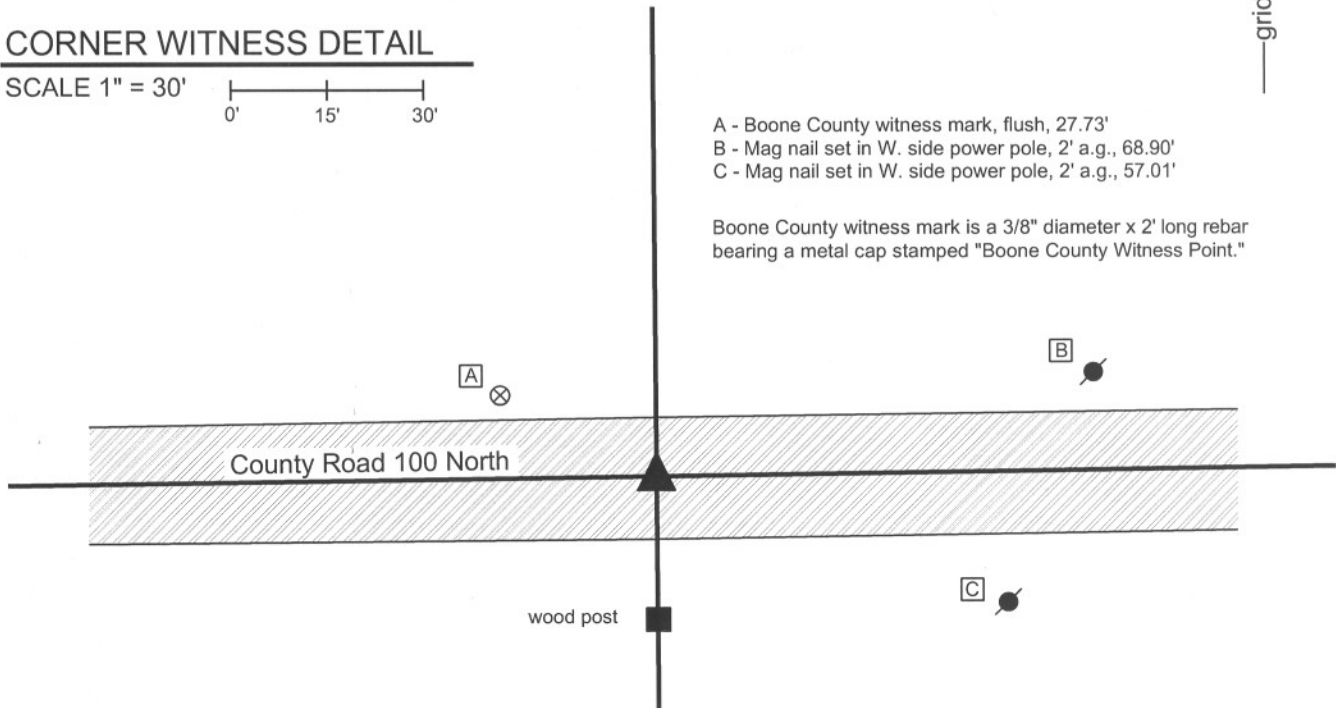
CORNER WITNESS DETAIL

SCALE 1" = 30'



- A - Boone County witness mark, flush, 27.73'
- B - Mag nail set in W. side power pole, 2' a.g., 68.90'
- C - Mag nail set in W. side power pole, 2' a.g., 57.01'

Boone County witness mark is a 3/8" diameter x 2' long rebar bearing a metal cap stamped "Boone County Witness Point."

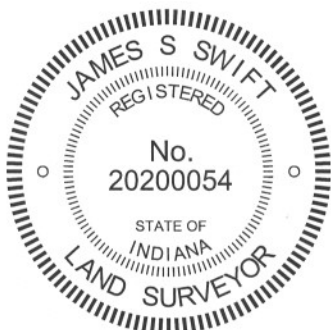


The harrison monument was set over a vertical section of railroad rail found.

A BCS record of March 5, 1858 states "Reestablished from Old Wit trees. Set a Rock 10 by 10 from which....." A BCS tie card dated July, 1968 states "stone found." A BCS tie card dated August 2, 2005 shows the corner as a harrison monument with no documentation of source.

This corner was excavated on September 30, 2011. Prior to excavation, a harrison monument was found at the surface. Excavation revealed a railroad rail found at 12 inches deep, directly below the harrison. No other monuments were found. It is known that it was a common practice for BCS crews in the late 1960s to remove a stone, when found, and replace it with a railroad rail. The documentation for such events typically states "stone found" with no mention of the removal of the stone or placement of the rail. It appears that the same procedure was followed for this corner. The railroad rail was left in place and a new harrison monument was set in place of the old harrison, directly over the rail. The top 3 inches of the rail were encased in concrete, anchoring the new harrison to the existing rail.

This corner was originally established as a wood post in June, 1822.



Kenneth E. Hedge
 Kenneth E. Hedge, County Surveyor

James S. Swift
 James S. Swift, IN LS 20200054
 March 1, 2012

Center
Twp

Section 27
T19N, R1E

Section 34
T19N, R1E

SECTION CORNER RECORD

BOONE COUNTY SURVEYOR'S OFFICE

NE 100-400

State Plane grid coordinates NAD83 (CORS96):

North: 1751081.15 East: 3145754.89 (U.S. survey feet)

Type of monument: Harrison, 4" disk 'Section Corner'

Depth: One inch below adjacent road surface

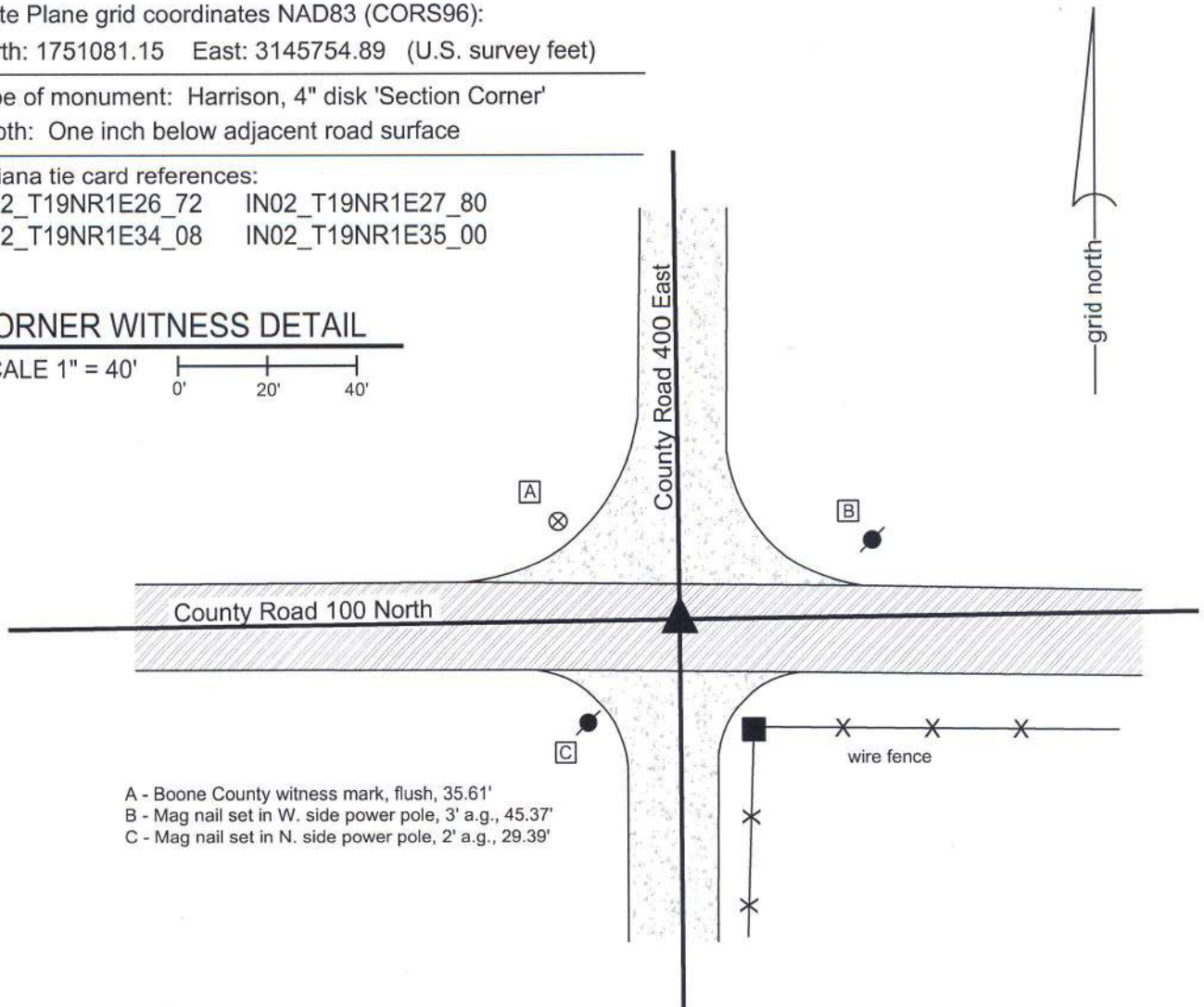
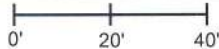
Indiana tie card references:

IN02_T19NR1E26_72 IN02_T19NR1E27_80

IN02_T19NR1E34_08 IN02_T19NR1E35_00

CORNER WITNESS DETAIL

SCALE 1" = 40'



- A - Boone County witness mark, flush, 35.61'
- B - Mag nail set in W. side power pole, 3' a.g., 45.37'
- C - Mag nail set in N. side power pole, 2' a.g., 29.39'

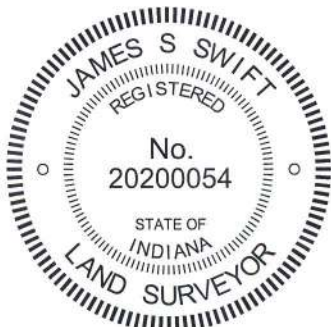
The harrison monument was set in place of a railroad rail found.

A BCS record of February, 1871 states "Reestablished from stump of Sugar and stake. Set Rock 13.6.5-1/2 +. A brick bat marked + under it." A BCS tie card dated June, 1968 shows the corner, but does not state any information about a monument. However, the field notes associated with that tie card state "stone found." A BCS tie card dated July, 28, 2005 shows the corner as a harrison monument with no documentation of source.

This corner was excavated on September 30, 2011. Prior to excavation a harrison monument was found at the surface. Excavation revealed a railroad rail found at 8 inches below grade, generally below the harrison, but approximately 0.1' N and 0.1' E of the position of the center of the harrison. No further evidence was found. It is known that it was a common practice for BCS crews in the late 1960s to remove a stone, when found, and replace it with a railroad rail. The documentation for such events typically states "stone found" with no mention of the removal of the stone or placement of the rail. It appears that the same procedure was followed for this corner.

The railroad rail and harrison were both removed during excavation. A new harrison monument was set in place of the railroad rail.

This corner was originally established as a wood post in June, 1822.



Kenneth E. Hedge
 Kenneth E. Hedge, County Surveyor

James S. Swift
 James S. Swift, IN LS 20200054
 January 15, 2013

Center Township

Section 27 T19N, R1E	Section 26 T19N, R1E
Section 34 T19N, R1E	Section 35 T19N, R1E