

SECTION CORNER RECORD

SE 500-900

BOONE COUNTY SURVEYOR'S OFFICE

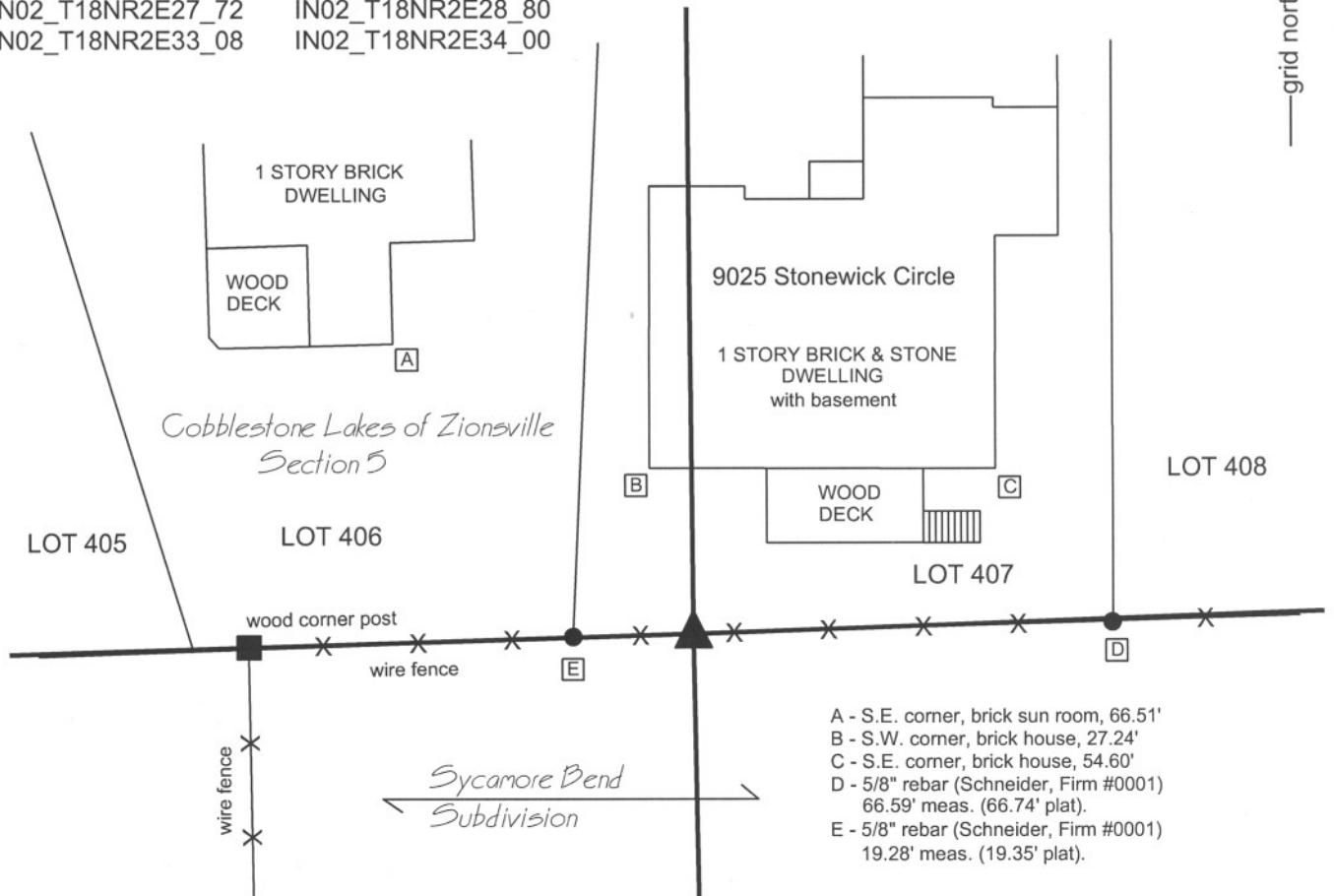
State Plane grid coordinates NAD83 (NSRS 2007):
North: 1720340.78 East: 3172780.70 (U.S. survey feet)

Type of monument: Harrison, 4" disk 'Section Corner'
Depth: flush with adjoining grade

Indiana tie card references:
IN02_T18NR2E27_72 IN02_T18NR2E28_80
IN02_T18NR2E33_08 IN02_T18NR2E34_00

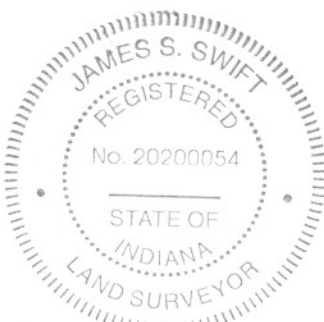
CORNER WITNESS DETAIL

SCALE 1" = 30' 0' 15' 30'



- A - S.E. corner, brick sun room, 66.51'
- B - S.W. corner, brick house, 27.24'
- C - S.E. corner, brick house, 54.60'
- D - 5/8" rebar (Schneider, Firm #0001) 66.59' meas. (66.74' plat).
- E - 5/8" rebar (Schneider, Firm #0001) 19.28' meas. (19.35' plat).

The harrison monument was set in place of a 5/8 inch rebar found. No entries were found for this corner in the BCS stone record. A BCS tie card dated March 6, 1991 is ambiguous about the specific corner, but shows ties to a 5/8 inch rebar. This corner was excavated on September 19 and 23, 2008. Prior to excavation, an old wood post was visible with a 5/8 inch rebar 0.5 foot south. The old E-W fence was not attached to the post and the rebar was in the fence. Excavation revealed a column of rocks ranging from 4 inches by 4 inches to 12 inches by 12 inches approximately 1.5 feet east of the post. The rocks were removed and inspected. None contained specific markings and there was no evidence that these rocks had been purposely set as corner stones. Private surveys which have tied to this corner have held the rebar. The rebar is clearly shown as the corner on the plat of Cobblestone Lakes, Section 5, adjoining this corner to the north. The preponderance of evidence favors the rebar as the corner and it was held as such. The rebar was removed. The post was also removed except for the bottom portion, being from 2 feet deep to 4 feet deep. The harrison was set in concrete in the position of the rebar. This corner was originally established as a wood post in July, 1821.



Kenneth E. Hedge
Kenneth E. Hedge, County Surveyor

James S. Swift
James S. Swift, IN LS 20200054

March 11, 2009

Eagle Township

Section 28 T18N, R2E	Section 27 T18N, R2E
Section 33 T18N, R2E	Section 34 T18N, R2E

SECTION CORNER RECORD

SE 500-1000

BOONE COUNTY SURVEYOR'S OFFICE

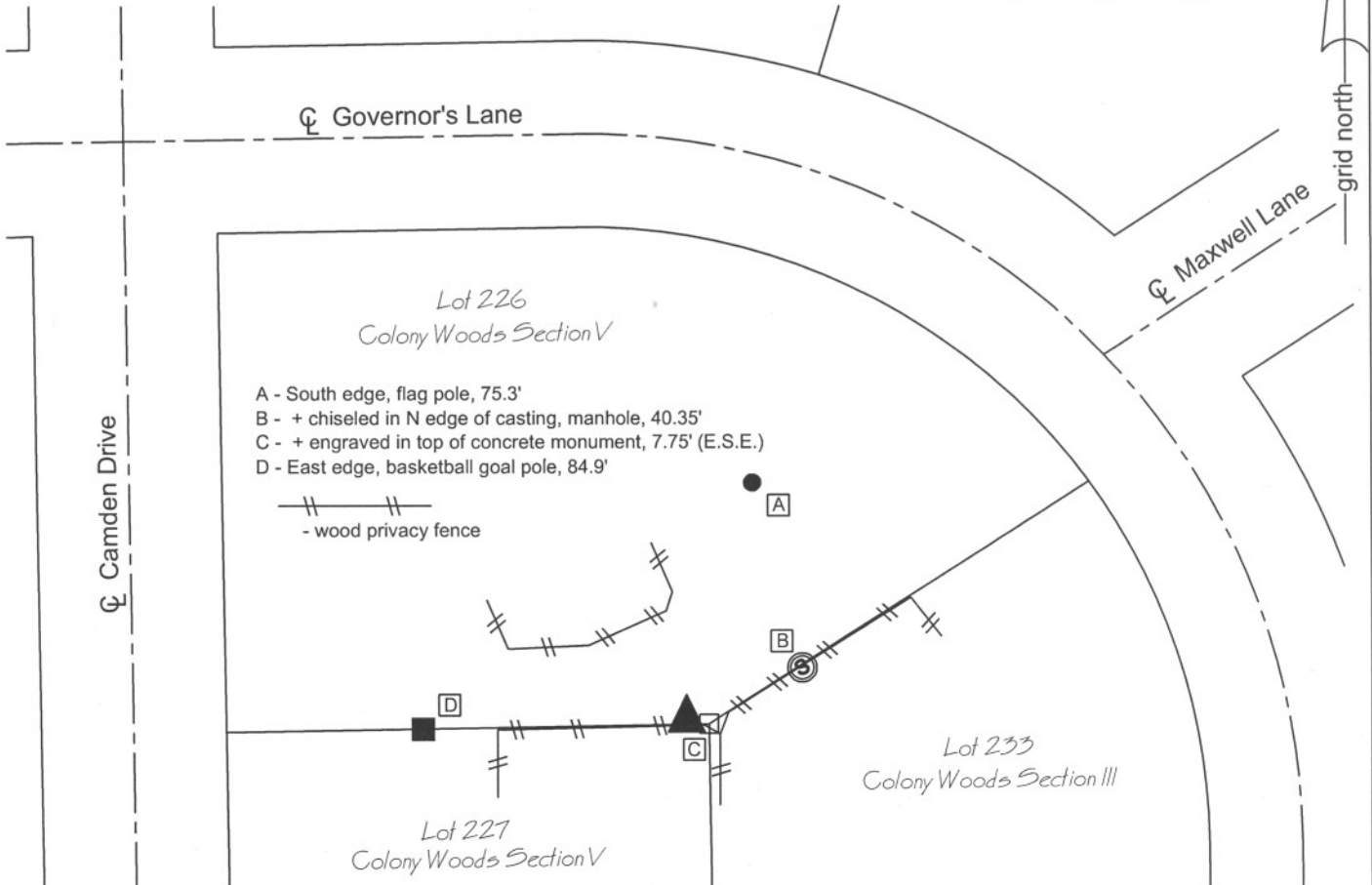
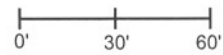
State Plane grid coordinates NAD83 (NSRS 2007):
 North: 1720489.92 East: 3178195.42 (U.S. survey feet)

Indiana tie card references:
 IN02_T18NR2E26_72 IN02_T18NR2E27_80
 IN02_T18NR2E34_08 IN02_T18NR2E35_00

Type of monument: Harrison, 4" disk 'Section Corner'
 Depth: 4 inches above adjacent grade in concrete pillar

CORNER WITNESS DETAIL

SCALE 1" = 60'



The Harrison monument was set over a railroad rail found. No entries were found for this corner in the BCS stone record, nor were any BCS tie cards found. This corner falls within lot 227 of Colony Woods subdivision, Section V (Plat Book 6, page 22). The location of the corner relative to the platted lots is more clearly shown on the plat of Colony Woods subdivision, Section III (Plat Book 6, page 9). Most recorded surveys referencing this corner state that the location was reconstructed from the geometry of the plats. A railroad rail on end was found, approximately 4 inches deep, at the location shown on the plat. The position of the railroad rail fits precisely with the plat geometry as reconstructed from centerline control monuments in Governor's Lane. It is known that railroad rails were set by this office and by Anderson and Associates Surveyors in the late 1960s and early 1970s. The plats were recorded in the late 1970s. No other evidence of the section corner was found. The railroad rail was held as marking the corner and the Harrison monument was set directly over the top of the center of the neck of the rail.

This corner was originally established as a wood post in July, 1821.



Kenneth E. Hedge
 Kenneth E. Hedge, County Surveyor

James S. Swift
 James S. Swift, IN LS 20200054

March 11, 2009

Eagle Township

Section 27 T18N, R2E	Section 26 T18N, R2E
Section 34 T18N, R2E	Section 35 T18N, R2E

PHOTOGRAPHIC DOCUMENTATION

Date of photography: October 9, 2008

View of railroad rail (section corner) and concrete monument (subdivision corner) from northwest.



For details and documentation, refer to related sheet "Section Corner Record."

SECTION CORNER RECORD

SE 550-900

BOONE COUNTY SURVEYOR'S OFFICE

State Plane grid coordinates NAD83 (NSRS 2007):

North: 1717699.67 East: 3172831.79 (U.S. survey feet)

Type of monument: Harrison, 4" disk 'Section Corner'

Depth: One inch below adjacent road surface

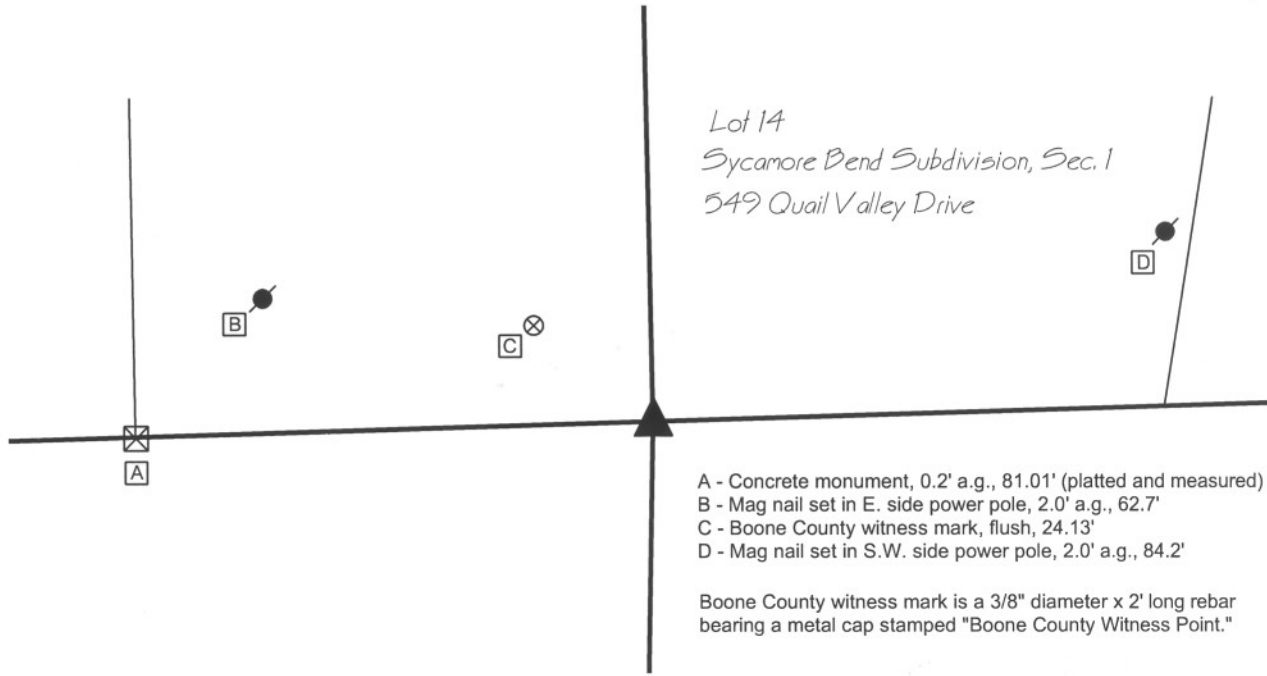
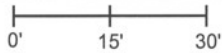
Indiana tie card references:

IN02_T18NR2E33_44 IN02_T18NR2E34_36



CORNER WITNESS DETAIL

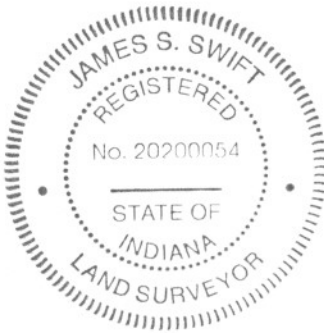
SCALE 1" = 30'



- A - Concrete monument, 0.2' a.g., 81.01' (platted and measured)
- B - Mag nail set in E. side power pole, 2.0' a.g., 62.7'
- C - Boone County witness mark, flush, 24.13'
- D - Mag nail set in S.W. side power pole, 2.0' a.g., 84.2'

Boone County witness mark is a 3/8" diameter x 2' long rebar bearing a metal cap stamped "Boone County Witness Point."

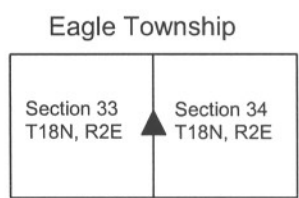
The harrison monument was set in place of a 5/8 inch rebar found. A BCS record of March 17, 1886 states "Reestablished from stump of Ash. Set rock 22, 18, 16 + on top." A BCS tie card dated March 6, 1991 shows the corner as a 5/8 inch rebar found. The plat of Sycamore Bend Subdivision, Section One, recorded in Plat Book 4, page 90 in the Office of the Boone County Recorder, which adjoins this corner on the north side, shows the corner 81.01 feet east of a concrete monument marking the southwest corner of the subdivision. A 5/8 inch rebar was found which agrees with the 1991 tie card and also agrees with the plat. All surveys and plats found which reference this corner have held the rebar. Extensive probing and manual excavation was performed in the vicinity of the rebar but the record stone was not found. It is noted that a small creek is located immediately to the south and a pipeline is located to the east of the corner. It is also noted that this corner falls approximately 48 feet east of a straight line connecting the section corners to the north and south. Consequently, the east line of the southeast quarter of section 33 bears slightly northeasterly as compared with other lines of the PLSS in this area. However, the rebar fits very well with evidence of the east line of said southeast quarter in the form a portion of a N-S county road which runs along it and the old N-S fence which exists along the line, north of the portion of road. The rebar was held as marking the corner and was replaced with a harrison monument. This corner was originally established as a wood post in July, 1821.



Kenneth E. Hedge
Kenneth E. Hedge, County Surveyor

James S. Swift

James S. Swift, IN LS 20200054
July 14, 2010



SECTION CORNER RECORD

SE 550-1000

BOONE COUNTY SURVEYOR'S OFFICE

State Plane grid coordinates NAD83 (NSRS 2007):

North: 1717859.39 East: 3178204.91 (U.S. survey feet)

Type of monument: 5/8" rebar with metal cap stamped "Boone County Surveyor"

Depth: flush with adjoining ground

Indiana tie card references:

IN02_T18NR2E34_44

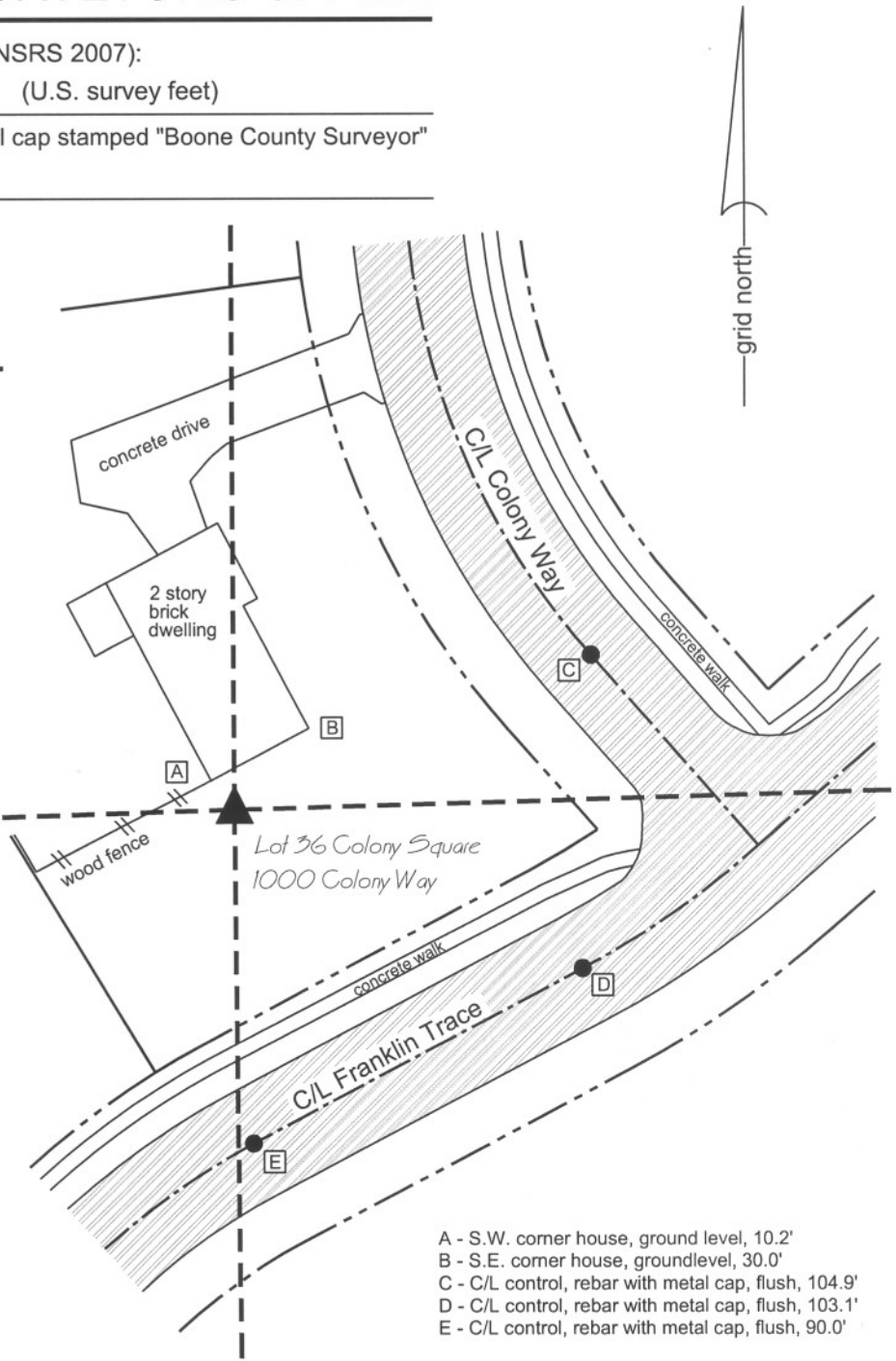
IN02_T18NR2E35_36

CORNER WITNESS DETAIL

SCALE 1" = 50'



The rebar was set in a calculated position. A BCS record of July 22, 1873 states "Found from stump of Beech." This record makes no mention of what monument may have been set at the corner. A BCS reference sheet dated June 15, 1989 also shows no information about monument but states "See Colony Woods Subdivision Plat, Section V." This plat, recorded in Plat Book 6, page 22 shows the corner and references its position with respect to the plat. The corner actually falls within Colony Square, Section 1, which is recorded in Plat Book 6, page 94 but this plat does not show the corner or give any reference for its specific location. The position of the corner was computed from centerline monumentation found in Colony Woods, Section V, specifically along Camden Drive and Scranton Court. This position was staked in the field and a 2 foot diameter hole was excavated with the permission of the owner of Lot 36, Colony Square. The plat of Colony Woods, Section V does not state what monument was held at the corner. Excavation revealed remnants of the base of wood post at 20 inches deep, slightly west of the calculated position. Several stones were found from 20 inches deep to 28 inches deep, all east of the remnants of the post. The calculated position falls approximately in the center of the group of stones and over a stone which is 28 inches deep. None of the stones could be positively identified as specific corner stones, but the presence of the post and stones at the calculated position are accepted as evidence that this is the position of the historically occupied corner. A 5/8 inch rebar, 24 inches long with a metal cap stamped Boone County Surveyor was set at the position of the corner as calculated from centerline control monuments found in Colony Woods Section V, directly over a stone at 28 inches deep. This corner was originally established as a wood post in July, 1821.



- A - S.W. corner house, ground level, 10.2'
- B - S.E. corner house, groundlevel, 30.0'
- C - C/L control, rebar with metal cap, flush, 104.9'
- D - C/L control, rebar with metal cap, flush, 103.1'
- E - C/L control, rebar with metal cap, flush, 90.0'



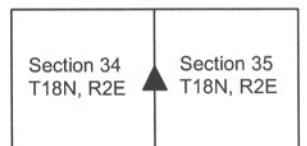
Kenneth E. Hedge
 Kenneth E. Hedge, County Surveyor

James S. Swift

James S. Swift, IN LS 20200054

July 14, 2010

Eagle Township



SECTION CORNER RECORD

SE 600-900

BOONE COUNTY SURVEYOR'S OFFICE

State Plane grid coordinates NAD83 (NSRS 2007):

North: 1715051.65 East: 3172786.80 (U.S. survey feet) (standard corner)

North: 1715056.74 East: 3172956.22 (U.S. survey feet) (closing corner)

Type of monument: Harrison, 4" disk 'Section Corner'

Depth: Corner 1: flush. Corner 2: two inches above grade.

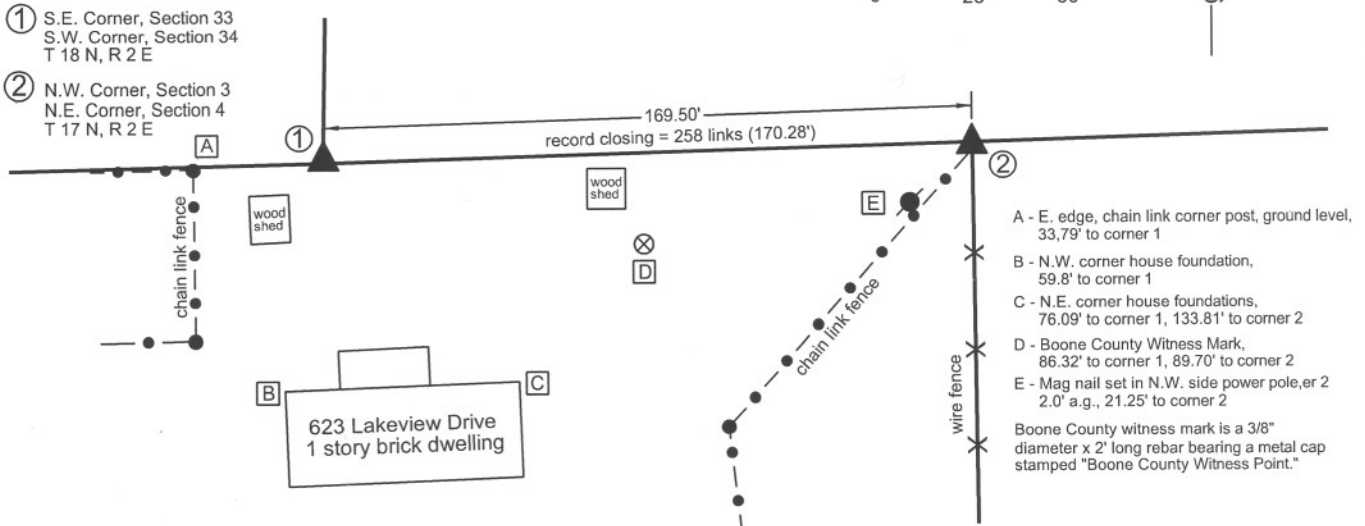
Indiana tie card references:

IN02_T17NR2E03_08 IN02_T17NR2E04_00

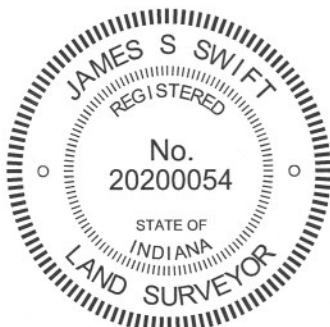
IN02_T18NR2E33_80 IN02_T18NR2E34_72

CORNER WITNESS DETAIL

SCALE 1" = 50'



The harrison monument at the standard corner (corner 1) was set in place of a stone found. The harrison monument at the closing corner (corner 2) was set on line between corner 1 and the standard corner one-half mile east, and immediately north of an iron pipe held previously identified as the corner. Neither of these corners are specifically described in the BCS Surveyor's Record. Corner 1 is mentioned as the terminal point for measurements in records of 1834, 1883 and 1894. Corner 2 is mentioned as such in records of 1836, 1857, 1894. A BCS tie card dated May 23, 1991 shows the corner as a "suck rod" found on the south side of an 8x8 inch wood post. This "suck rod" has been held for many private surveys since, most noting it as an iron pipe. This corner was excavated on September 23, 2008. Prior to excavation, the "suck rod" was visible in the vicinity of corner 2, being a one-inch diameter iron pipe. The post referred to in the 1991 tie card was broken off, but the base of the post was still present in the ground. Excavation around the post yielded several rocks, none of which could be positively identified as being a specific corner stone and all of which appeared to be rocks set for the purposes of bracing the post. In the vicinity of corner 1, a steel fence post broken off at the ground was found with a magnetic locator. Excavation yielded remnants of a wood post immediately south of the steel post. At the southeast edge of the post remnants two stones were found on top of each other. The top stone was 9 inches tall by 6 inches E-W by 3 inches N-S. While this is somewhat small for a section corner stone, it bore the characteristics of a corner stone in its orientation, being vertical and oriented in cardinal directions. Another stone was found directly below, measuring 6x5x4 inches. Other rocks were not found around the remnants of the post. The two found stones did not appear to be brace rocks and did appear to be specific corner monuments. The stones were removed and the harrison monument was set in their place. The distance from corner 1, as so established and monumented to the iron pipe previously held as corner 2 is within one foot of the original closing distance. The pipe was at the south edge of the base of the old corner post, with no specific documentation found for this placement. The township line, connected from corner 1 to the standard corner one-half mile east (see SE-600-950) falls on the north side of the post. Given the previous references to the pipe or suck rod as the corner, the pipe was held to define the E-W position of the corner. The township line was held to define the N-S position and corner 2 was established on the township line, immediately north of the iron pipe. This point is 1.25 feet north of the position of the iron pipe (removed) and at the north edge of the base of the old 8x8 inch wood post. A harrison monument was set at this computed position for corner 2 on September 18, 2009. The standard corner was originally established as a wood post in 1819 and another wood post was set at the closing corner in 1821.



Kenneth E. Hedge
Kenneth E. Hedge, County Surveyor

James S. Swift
James S. Swift, IN LS 20200054
July 14, 2010, Revised March 1, 2012

Eagle Township

Section 33 T18N, R2E	Section 34 T18N, R2E
Section 4 T17N, R2E	Section 3 T17N, R2E

PHOTOGRAPHIC DOCUMENTATION

Date of photography: September 2008 & September 2009

Corner 2 as found, showing the pipe and metal posts to the south. The above ground portion of the wood post is lying on the adjacent ground.



Corner 2 being excavated, showing the pipe, metal posts to the south, the in ground portion of the wood post, and a rock found on the north side of the post, presumably a brace rock.



The top stone found at corner 1.



The lower stone found at corner 2 and the remains of the old wood post found adjacent to the two stones.



For details and documentation, refer to related sheet "Section Corner Record."

SECTION CORNER RECORD

BOONE COUNTY SURVEYOR'S OFFICE

SE 600-950

State Plane grid coordinates NAD83 (NSRS 2007):

North: 1715133.44 East: 3175509.98 (U.S. survey feet) (corner 1)

Type of monument: Harrison, 4" disk 'Section Corner' (corner 1)

Depth: 3 inches above adjacent grade in concrete pillar (corner 1)

Indiana tie card references:

IN02_T17NR2E03_04 IN02_T18NR2E34_76

The harrison monument was set in the position of a stone as reconstructed from deed calls and monuments to the north.

A BCS record of November 7-9, 1894 for the standard corner (section 34) states "Set Rock + 22.18.8 at corner, Set Rock + 7.12.10 under. B Sect. 3 East, 1.53 [chains]." A BCS record of the same date for the closing corner (section 3) states "Established from F Sect. 34 after finding same by running lines. Set Rock + 24.12.12 at corner. Set Rock + 6.18.12 under." (Huckstep)

An undated BCS record for the standard corner (section 34), which believed to be from June 16, 1898 states "Set rock + 10x14x24. Rock set by Huckstep S 80° E 20 1/2 lks." An associated BCS record which is dated June 16, 1898 for the closing corner (section 3) states "Set Rock 8x12x16 +. Rock set by Huckstep 20 1/2 lks E." (Fulwider)

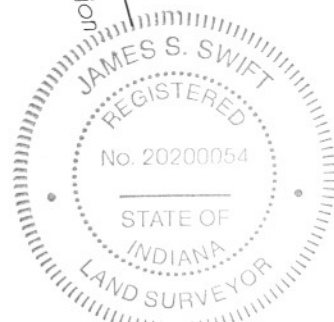
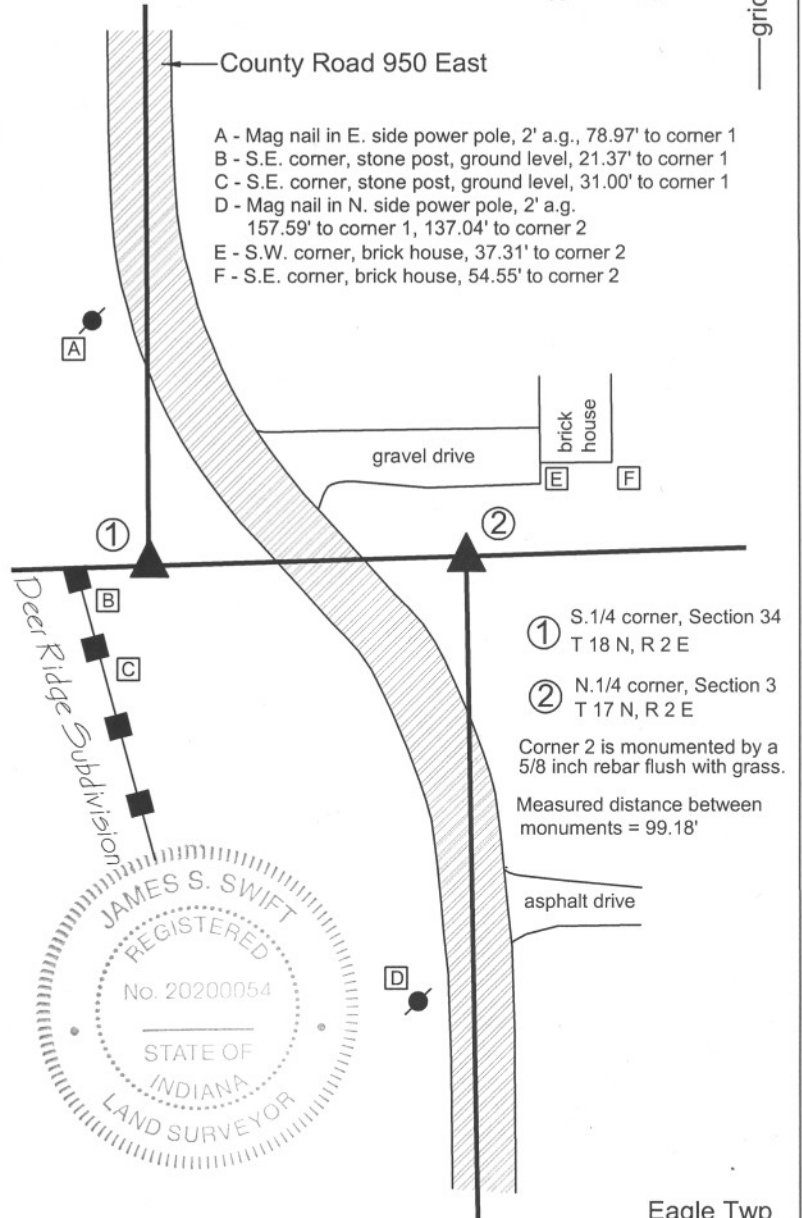
A BCS tie card for the closing corner dated 12/2/1968 states "3/4 inch pipe over stone." A tie card from an unidentified source, but which has been on file in this office, dated October 1, 1981, shows three stones found: the two Huckstep stones (standard and closing corners) and one of the Fulwider stones (standard corner only). The sketch demonstrates that the Huckstep stones fit with the roadway of County Road 950 East while the Fulwider stone is offset to the west. This tie card also shows the Huckstep stones as being 101.07 feet apart and notes that the "original notes" call for 100.98 feet, which is equal to 1.53 chains.

The area in the vicinity of the standard corner has been substantially disturbed by the installation of utilities. A rock found in the vicinity of the standard corner appeared to have been painted by a surveyor and had a wood lathe next to it but was significantly smaller than any of the record stones, was not emedded in the dirt and was easily moved. No other stones were found in the vicinity of the standard corner. The vicinity of the closing corner does not appear to have been disturbed but only one stone was found there, which was on the west side of the remnants of a cedar post and appeared to be a brace rock for the post. This stone did not match the dimensions of any of the record stones. A 5/8 inch rebar 2 feet south of this stone has been held as the corner for numerous surveys in the section 3 and also appears to have been held as the corner for the plat of Deer Ridge subdivision to the west. The Deer Ridge plat (Plat Book 7, page 41) shows both corners but does not identify the monument at either. Reconstructing the corners from the platted geometry based on P.K. nails found at the centers of the cul-de-sacs on Antler Court and White Tail Circle, the northeast corner of the subdivision fits precisely with the 5/8 inch rebar. The calculated position of the standard corner falls 1 foot east and 0.2 foot north of the aforementioned small rock.

The descriptions for properties to the north, including those found in Warranty Deeds recorded as Instruments 9710010 and 200700000615, call for a stone at the standard corner and railroad spikes on the line to the north. Three railroad spikes were found, all approximately 3 inches below the surface of the asphalt, the relative positions of which agree precisely with the deed calls. The position of the standard corner was calculated with respect to these monuments and the relevant deed calls. The calculated position agrees precisely with the position calculated from the Deer Ridge plat. No monument was found at this position and clear evidence of disruption was visible. A harrison monument was set at the calculated position. It is noted that the distance between the two corners is 1.8 feet less than that shown by Huckstep in 1894. It is also noted that the 5/8 inch rebar falls precisely along the line connecting the harrison monument set at the standard corner and a harrison monument set over a stone at the corner of sections 34 and 35, one half mile to the east. The standard corner was established as a wood post in 1819. The closing corner is not an original federal corner.

CORNER WITNESS DETAIL

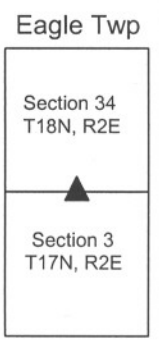
SCALE 1" = 60'



Kenneth E. Hedge
Kenneth E. Hedge, County Surveyor

James S. Swift
James S. Swift, IN LS 20200054

March 11, 2009



SECTION CORNER RECORD

SE 600-1000

BOONE COUNTY SURVEYOR'S OFFICE

State Plane grid coordinates NAD83 (NSRS 2007):

North: 1715214.92 East: 3178233.82 North: 1715215.92 East: 3178265.16 (U.S. survey feet)

Type & depth of monument:

Standard corner (West): Harrison, 4" disk 'Section Corner' one inch below adjacent road surface.

Closing corner (East): Harrison, 4" disk "Section Corner' flush with ground.

Indiana tie card references:

IN02_T17NR2E02_00 IN02_T17NR2E03_08
 IN02_T18NR2E34_80 IN02_T18NR2E35_72

The harrison monuments were both set over stones found. A BCS record of November 7,8,9, 1894 states "Reestablished from lap. Set Rock + 19.12.7 at corner. Set Rock + 9.20.12 under. Several small stones around. Corner section 2 + 3 East 48 [links]."

BCS field notes dated 12/2/1968 call for a stone at the standard corner (common to sections 34 and 35). However, the tie card made from these field notes was identified as being for the south quarter corner of section 34, 1/2 mile west, and the tie card has long been improperly referenced to the wrong corner. A BCS tie sheet dated June 15, 1989 calls for a stone at the closing corner (common to sections 2 and 3).

Many surveys in this vicinity call for the stone at the closing corner. This set of corners was originally excavated and the standard corner monumented on December 4, 2007, with final monumentation at the closing corner completed on December 11, 2008.

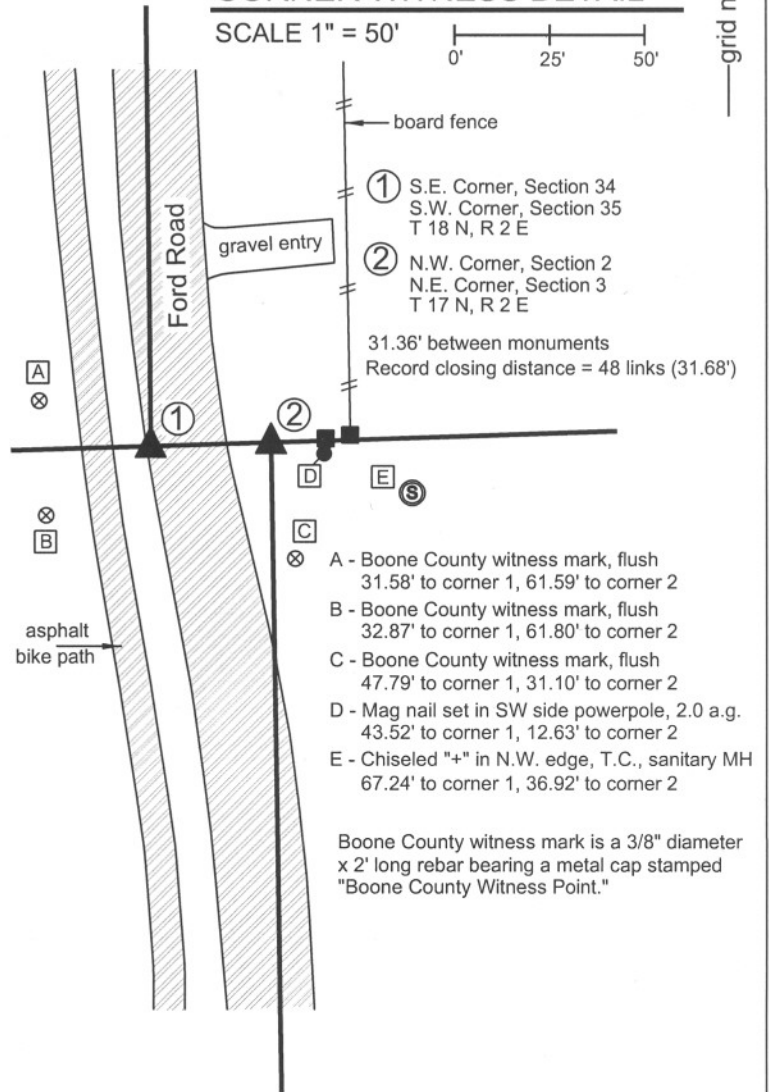
Prior to excavation a 5/8 inch rebar was visible in a hole in the asphalt in the vicinity of the standard corner and a harrison monument was visible at the surface of the ground in the vicinity of the closing corner. No documentation was found for the source of either of these monuments. Excavation revealed stones at both corners. The stone at the standard corner was found 2 feet deep, completely established in the clay and appears to be the record lower stone from 1894. Iron pipes were found on the east and south sides of this stone. The 5/8 inch rebar which had been the visible monument prior to excavation had been driven into the iron pipe on the east side of the stone. The harrison monument at the closing corner was set in a minimal amount of concrete and was easily removed. The stone at the closing corner was found approximately 10 inches deep 1.5 feet west of the harrison monument. The record federal offset distance (as well as record 1894 "lap") at this corner is 48 links or 31.68 feet. The top, centers of the two stones are 31.36 feet apart. The harrison monument at the standard corner was set over the top, center of the stone found. From December 4, 2007 to December 11, 2008, the stone at the closing corner was left visible within a piece of 12 inch smooth corner black storm pipe, set vertically. On December 11, 2008 a harrison monument was set over the top of this stone, on line between the harrison monuments at the southwest and south quarter corners of section 35. This monument was truncated at 8 inches and set in concrete within the vertical storm pipe over the stone. The top of the stone was encased in concrete. At 1 foot below the top of the stone, it measures 14 inches N-S by 12 inches E-W and is very stable, clearly extending deeper into the ground. A notch was cut out of the bottom of the north edge of the storm pipe to fit it over the stone.

These corners were originally established as wood posts in 1819 (standard) and 1821 (closing).

CORNER WITNESS DETAIL

SCALE 1" = 50'

0' 25' 50'



Kenneth E. Hedge
 Kenneth E. Hedge, County Surveyor

James S. Swift
 James S. Swift, IN LS 20200054

March 11, 2009

Eagle Township

Section 34 T18N, R2E	Section 35 T18N, R2E
Section 3 T17N, R2E	Section 2 T17N, R2E

PHOTOGRAPHIC DOCUMENTATION

Date of photography: December 4, 2007 and December 11, 2008

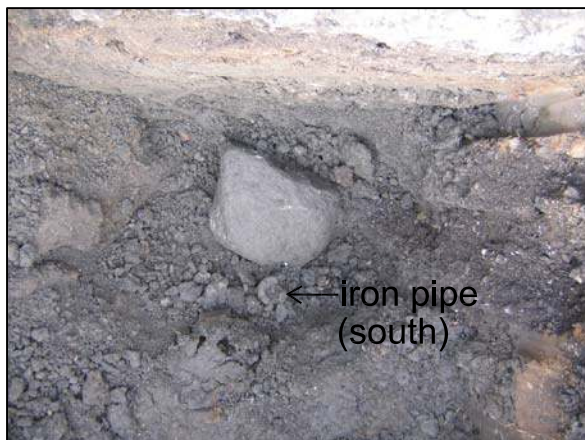
Photograph of the stone at the closing corner (east of Ford Road) and the Harrison monument. The Harrison is 1.5 feet east of the top, center of the stone. The Harrison monument was removed and a new Harrison set over the stone on December 11, 2008.



Close up of the closing corner stone with approximately 18 inches of the stone exposed.



Photograph of the record lower stone found at the standard corner (on the west edge of pavement, Ford Road). Note the iron pipe on the south edge of the stone. A similar iron pipe was found on the east edge of the stone, but removed prior to this photo. The iron pipe on the east edge of the stone had a 5/8 inch rebar driven into the center of it. The rebar was the visible monument prior to excavation.



The same photograph as the one that to the left, but with additional graphics highlighting the iron pipe on the south side of the stone and demonstrating the approximate position of the iron pipe which was previously on the east side of the stone.

