

SECTION CORNER RECORD

SE 500-300

BOONE COUNTY SURVEYOR'S OFFICE

State Plane grid coordinates NAD83 (NSRS 2007):

North: 1719492.96 East: 3140701.81 (U.S. survey feet)

Type of monument: Harrison, 4" disk 'Section Corner'

Depth: 4 inches below adjoining gravel road surface.

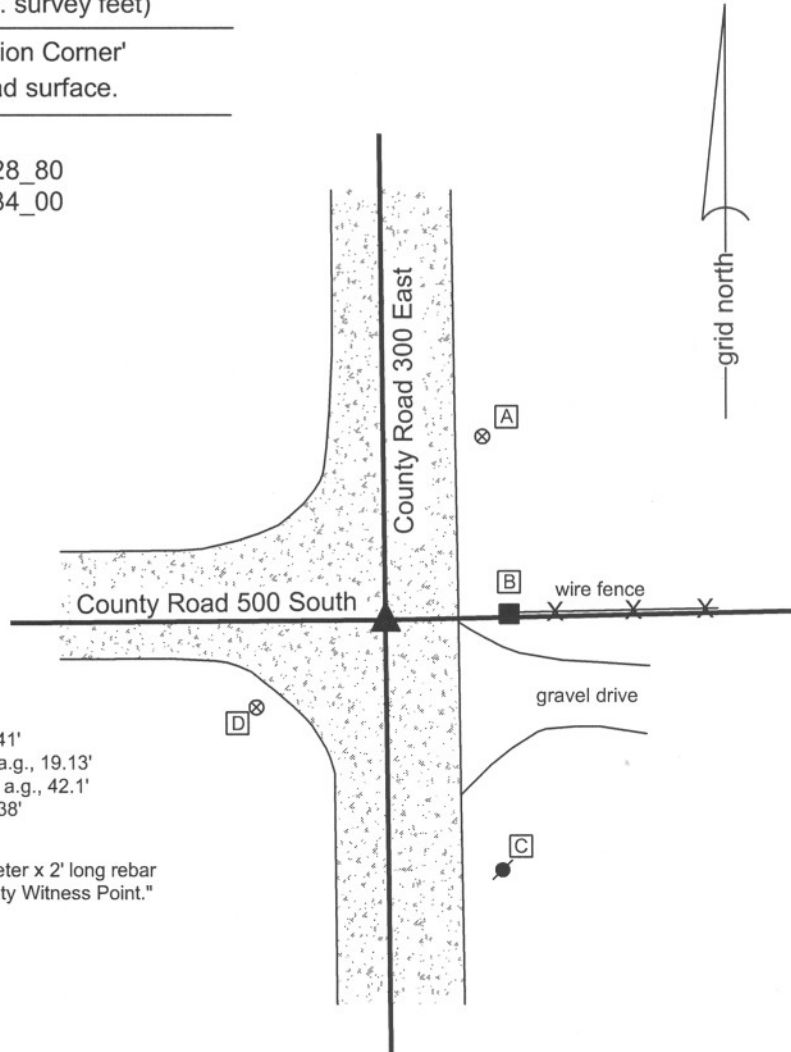
Indiana tie card references:

IN02_T18NR1E27_72 IN02_T18NR1E28_80

IN02_T18NR1E33_08 IN02_T18NR1E34_00

CORNER WITNESS DETAIL

SCALE 1" = 30'



- A - Boone County witness mark, flush, 32.41'
- B - Mag nail set in N. side wood post, 0.5' a.g., 19.13'
- C - Mag nail set in N. side power pole, 1.7' a.g., 42.1'
- D - Boone County witness mark, flush, 24.38'

Boone County witness mark is a 3/8" diameter x 2' long rebar bearing a metal cap stamped "Boone County Witness Point."

The Harrison monument was set over the top, high point of a stone found.

No known BCS records were found for this corner beyond the original establishment of the corner by federal surveyors.

Prior to excavation, a 1/2" diameter rebar was found at the approximate intersection of the two roads and at the extension of the old fence to the east.

The source of the rebar is not known. The corner was excavated on May 15, 2008. Excavation yielded a stone found at 16 inches deep. The top of the stone is 15 inches E-W by 11 inches N-S, protruding 2 inches out of the clay base into the gravel sub-base of the road. The top 7 inches of the stone were exposed, at which point the stone remained entirely stable, indicating that it protrudes further into the clay. The Harrison monument was set directly over the top, high point of the stone. The rebar, removed during excavation, was 0.7 feet N and 0.5 feet E of the top, high point of the stone.

This corner was originally established as a wood post in June, 1820.



Kenneth E. Hedge
 Kenneth E. Hedge, County Surveyor

James S. Swift
 James S. Swift, IN LS 20200054

March 11, 2009

Perry Township

Section 28 T18N, R1E	Section 27 T18N, R1E
Section 33 T18N, R1E	Section 34 T18N, R1E

PHOTOGRAPHIC DOCUMENTATION

Date of photography: May 15, 2008

Corner stone - view from above.



Corner stone - view from the south.



View from west, looking across hole to wood end post at the terminus of an old fence to the east. The stone is not visible, but shown by arrow.



View from the east looking across the hole and along County Road 500 South to the west.



For details and documentation, refer to related sheet "Section Corner Record."

SECTION CORNER RECORD

SE 500-350

BOONE COUNTY SURVEYOR'S OFFICE

State Plane grid coordinates NAD83 (NSRS 2007):

North: 1719548.75 East: 3143359.12 (U.S. survey feet)

Type of monument: Harrison, 4" disk 'Section Corner'

Depth: Flush with adjoining grade

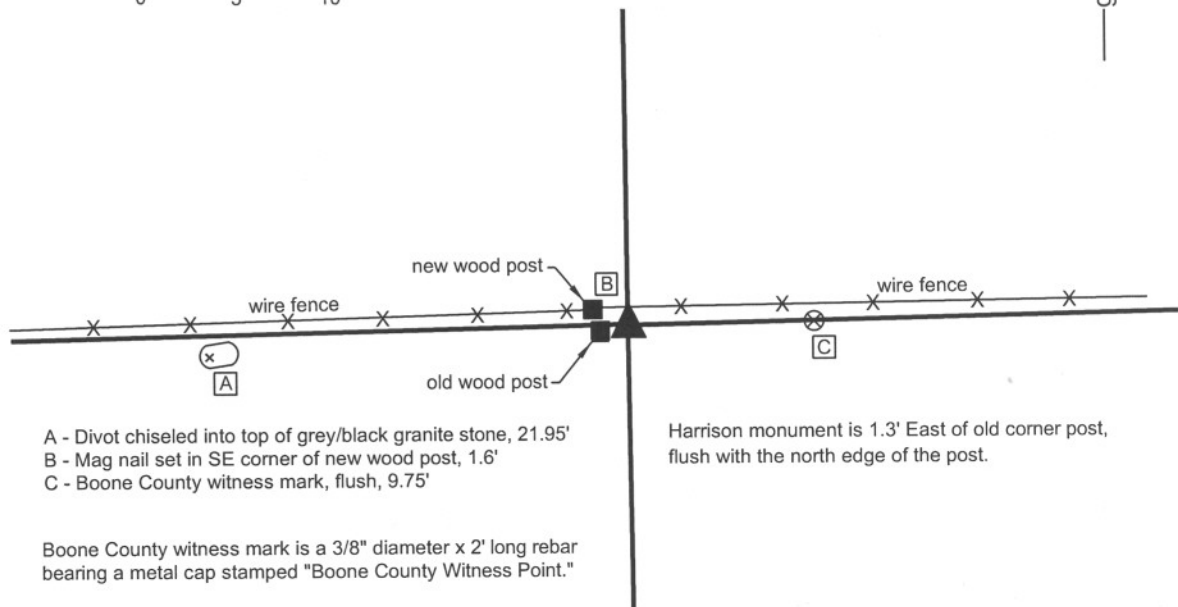
Indiana tie card references:

IN02_T18NR1E27_76

IN02_T18NR1E34_04

CORNER WITNESS DETAIL

SCALE 1" = 10'



- A - Divot chiseled into top of grey/black granite stone, 21.95'
- B - Mag nail set in SE corner of new wood post, 1.6'
- C - Boone County witness mark, flush, 9.75'

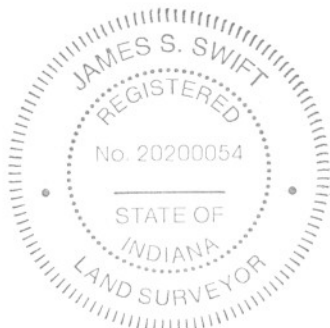
Harrison monument is 1.3' East of old corner post, flush with the north edge of the post.

Boone County witness mark is a 3/8" diameter x 2' long rebar bearing a metal cap stamped "Boone County Witness Point."

The Harrison monument was set over the top of a stone found.

A BCS record dated May 26, 1892 states "reestablished by measure and running line. Set rock marked + 11x9x8 inches at corner. Set rock marked + 6,12,8 under." No BCS tie cards were found for this corner. This corner was excavated on April 21 and 23, 2008. Prior to excavation two wood posts were visible, surrounded by numerous rocks of a variety of types and sizes. The old post is situated slightly south of the new post and existing wire fence. The record lower stone was found, lifted and confirmed in its size and marking. The stone was replaced in its original position and the Harrison monument was set in a column of concrete within a piece of 12 inch smooth core black plastic storm pipe set vertically. The Harrison is flush with the adjoining ground, 1.3 feet east of and even with the north edge of the old post. The record upper stone was not found. Refer to the attached sheet for photographic documentation of the record lower stone.

This corner was originally established as a wood post in June, 1820.



Kenneth E. Hedge
Kenneth E. Hedge, County Surveyor

James S. Swift
James S. Swift, IN LS 20200054

March 11, 2009

Perry Township

Section 27
T18N, R1E

Section 34
T18N, R1E

PHOTOGRAPHIC DOCUMENTATION

Date of photography: April 21 & April 23, 2008

Two posts and hole in which corner stone was found - view from southeast.



Corner stone - view from above.



Corner stone and old post - stone temporarily removed from ground.



Corner stone - close up.



Same picture as above with etched "+" enhanced for ease of visual detection.



Same picture as above with etched "+" enhanced for ease of visual detection.



For details and documentation, refer to related sheet "Section Corner Record."

SECTION CORNER RECORD

SE 500-400

BOONE COUNTY SURVEYOR'S OFFICE

State Plane grid coordinates NAD83 (NSRS 2007):

North: 1719609.07 East: 3146019.02 (U.S. survey feet)

Type of monument: Harrison, 4" disk 'Section Corner'

Depth: 4 inches above adjoining grade.

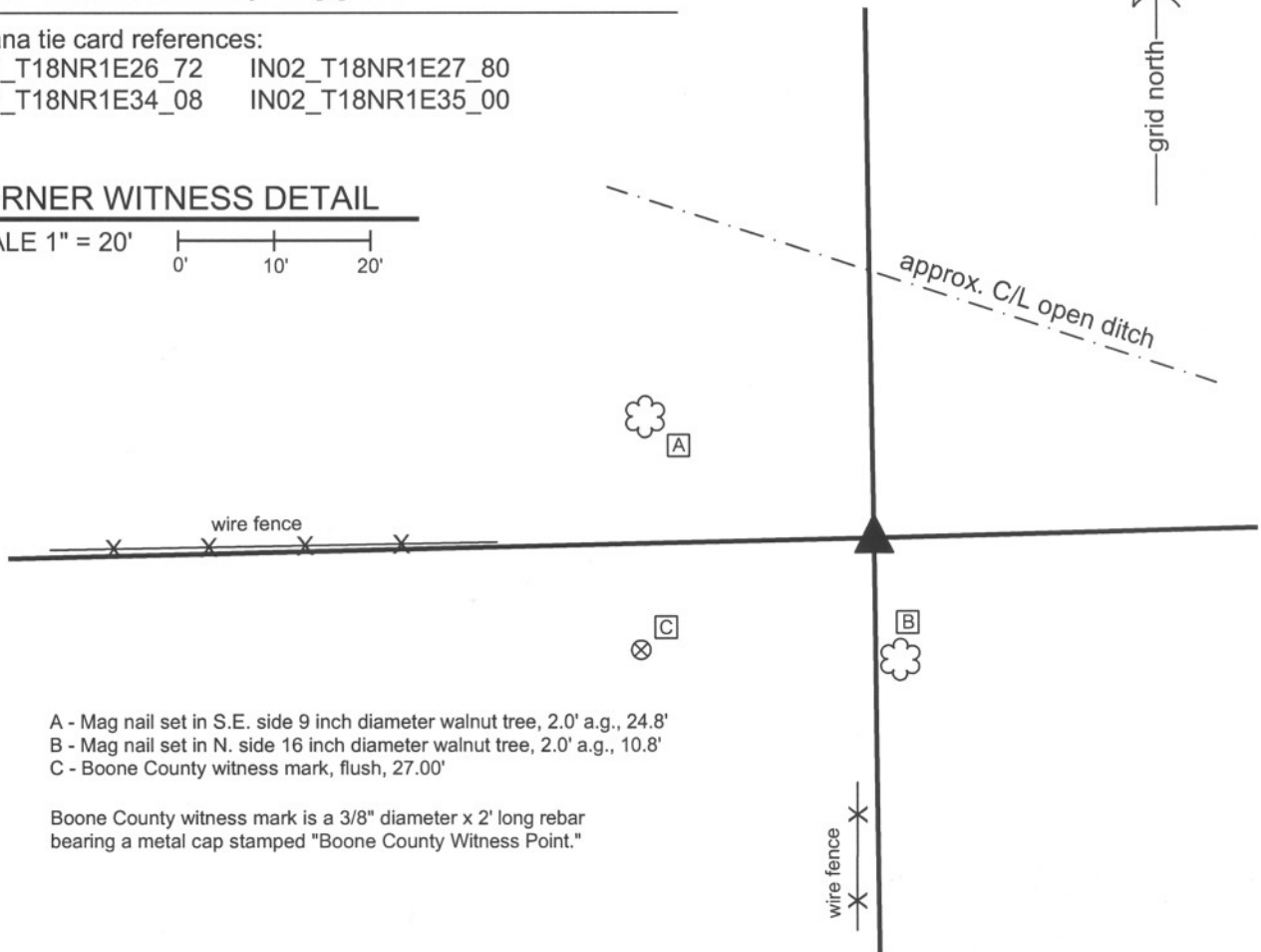
Indiana tie card references:

IN02_T18NR1E26_72 IN02_T18NR1E27_80

IN02_T18NR1E34_08 IN02_T18NR1E35_00

CORNER WITNESS DETAIL

SCALE 1" = 20'



- A - Mag nail set in S.E. side 9 inch diameter walnut tree, 2.0' a.g., 24.8'
- B - Mag nail set in N. side 16 inch diameter walnut tree, 2.0' a.g., 10.8'
- C - Boone County witness mark, flush, 27.00'

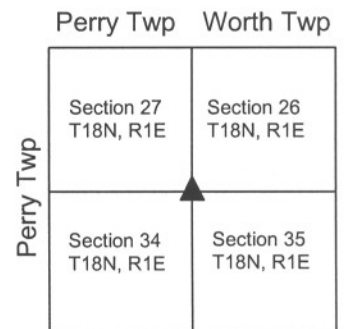
Boone County witness mark is a 3/8" diameter x 2' long rebar bearing a metal cap stamped "Boone County Witness Point."

The harrison monument was set in place of a rebar found at the base of a cedar post. A BCS record of July 23,24,28, 1868 states "Reestablished from Wh Ash Stump. Set a stake." No recent BCS tie cards were found referencing this corner. All recorded surveys found reference a rebar as the corner, including the preliminary survey to Perry Industrial Park, recorded in Survey Book 4, page 22 in the Office of the Boone County Recorder. This corner was excavated October 20, 2009. Prior to excavation, a wood post was visible approximately in line with portions of old fence to the West and South. A 5/8 inch rebar bearing a plastic cap stamped "Dodge S0288" was found at the east edge of the base of the post. The post was a cedar post, rotten and broken-off at ground level but intact below the ground. Evidence of old fences to the East, West and South were found at the post, below ground. No stones were found. As the rebar was adjacent to the post and has been held for the corner by all known surveys, the rebar was held as the corner and the harrison monument was set in its place. Uncertainties with the location of the corner with respect to different positions of the rebar and post are approximately one-half foot. This corner was originally established as a wood post in July, 1820.



Kenneth E. Hedge
 Kenneth E. Hedge, County Surveyor

James S. Swift
 James S. Swift, IN LS 20200054
 July 14, 2010



SECTION CORNER RECORD

SE 550-300

BOONE COUNTY SURVEYOR'S OFFICE

State Plane grid coordinates NAD83 (NSRS 2007):

North: 1716836.23 East: 3140733.84 (U.S. survey feet)

Type of monument: Harrison, 4" disk 'Section Corner'

Depth: flush with adjacent road surface

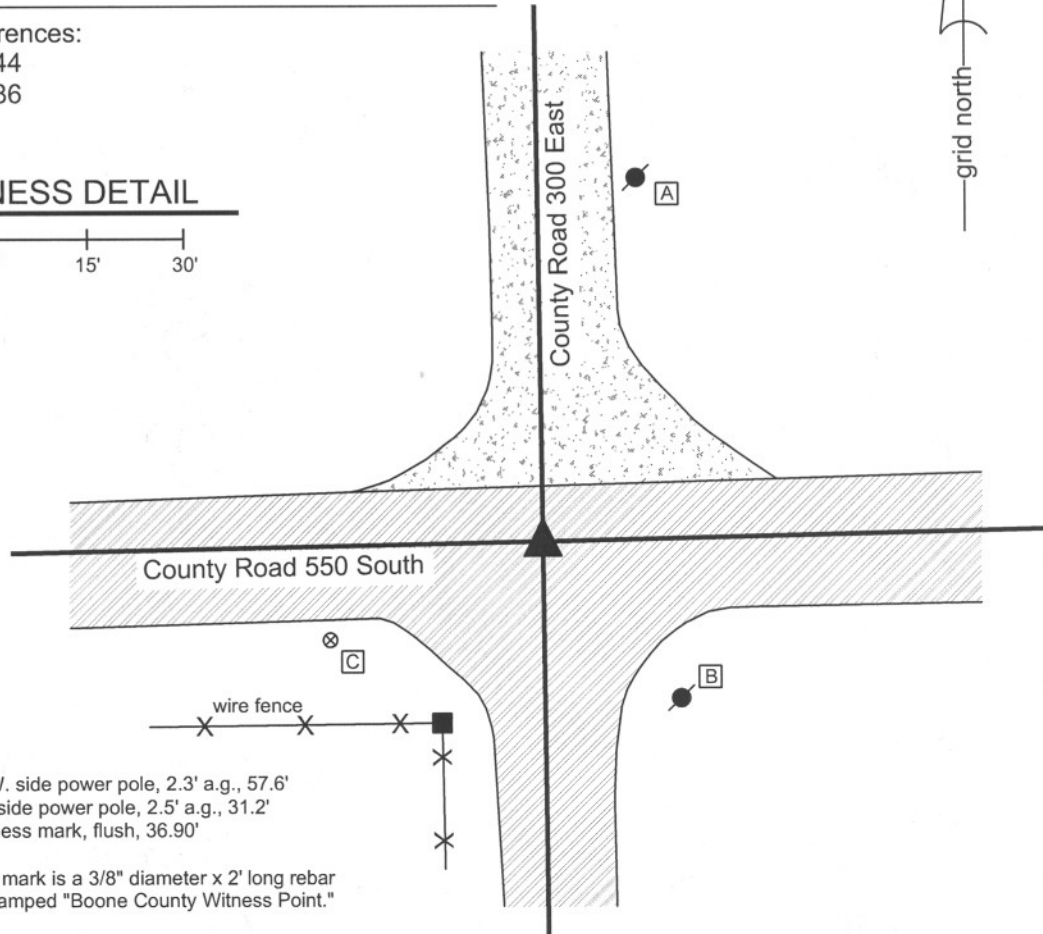
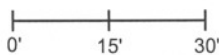
Indiana tie card references:

IN02_T18NR1E33_44

IN02_T18NR1E34_36

CORNER WITNESS DETAIL

SCALE 1" = 30'



A - Mag nail set in S.W. side power pole, 2.3' a.g., 57.6'

B - Mag nail set in W. side power pole, 2.5' a.g., 31.2'

C - Boone County witness mark, flush, 36.90'

Boone County witness mark is a 3/8" diameter x 2' long rebar bearing a metal cap stamped "Boone County Witness Point."

The Harrison monument was set directly over the chiseled "+" found on a granite stone.

A BCS record of February 20, 1873 states "reestablished from SE Poplar, the other had just been dug out. Set two rocks. One 13, 9, 6 +. Top one (Sandy) 18, 14, 17 +." No other BCS records are known for this corner beyond the original establishment of the corner by federal surveyors. This corner was excavated on May 15, 2008. Prior to excavation, a Mag nail was visible flush with the surface of the road at the approximate intersection of the centers of the county roads. Excavation revealed that this nail was over an iron bolt slightly below the surface. Further excavation yielded a stone found 26 inches deep. This stone measured 12 inches x 12 inches x 7 inches, was in fill, not embedded in the clay and does not fit the description of either of the record stones. This stone was removed and another stone was found directly below it. The lower stone is 13 inches E-W by 9 inches N-S and 6 inches thick with an identifiable + etched on the top center, embedded in the top of the clay layer. This represents the lower of the two record stones. The horizontal orientation of the lower stone fits with the pattern from that time frame of establishing the upper stone vertically above a lower stone which was set horizontally. The Harrison monument was set directly over the etched "+" on the record stone. The mag nail was approximately 0.3 foot East of this point. This corner was originally established as a wood post in 1820.



Kenneth E. Hedge
Kenneth E. Hedge, County Surveyor

James S. Swift
James S. Swift, IN LS 20200054

March 11, 2009

Perry Township

Section 33 T18N, R1E	Section 34 T18N, R1E
-------------------------	-------------------------

PHOTOGRAPHIC DOCUMENTATION

Date of photography: May 15, 2008

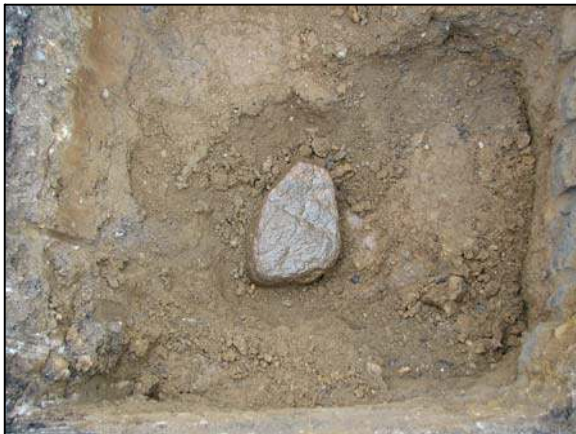
Upper stone. Does not match the record dimensions for the record upper corner stone. Stone is in fill material, not in clay.



Lower stone as first exposed directly below the upper stone. This stone does match the dimensions of the record lower corner stone, has a deep etched "+" on top and is embedded in the clay.



Lower stone more fully exposed and washed.



Same picture as to the left with the etched "+" enhanced for ease of visual detection.



For details and documentation, refer to related sheet "Section Corner Record."

SECTION CORNER RECORD

SE 550-400

BOONE COUNTY SURVEYOR'S OFFICE

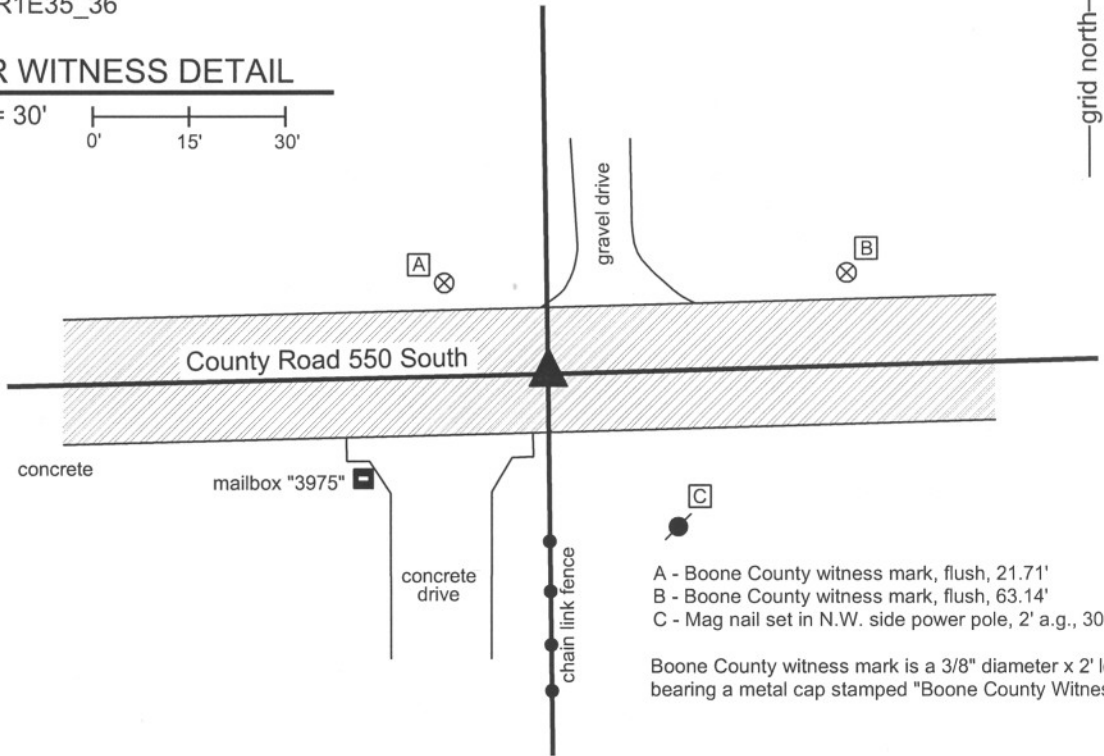
State Plane grid coordinates NAD83 (NSRS 2007):
North: 1716953.96 East: 3146053.72 (U.S. survey feet)

Type of monument: Harrison, 4" disk 'Section Corner'
Depth: One inch below adjacent road surface

Indiana tie card references:
IN02_T18NR1E34_44
IN02_T18NR1E35_36

CORNER WITNESS DETAIL

SCALE 1" = 30'

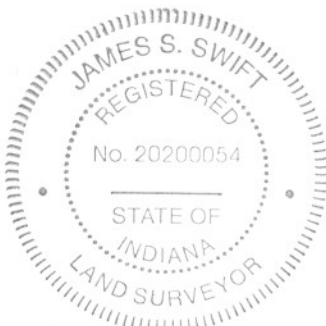


- A - Boone County witness mark, flush, 21.71'
- B - Boone County witness mark, flush, 63.14'
- C - Mag nail set in N.W. side power pole, 2' a.g., 30.1'

Boone County witness mark is a 3/8" diameter x 2' long rebar bearing a metal cap stamped "Boone County Witness Point."

The harrison monument was set in place of a harrison monument and a railroad rail found. A BCS record of November 14, 1912 states "Re-Est. by measure. Set rock 16,14,7 +." No BCS tie cards were found for this corner. Prior to excavation a harrison monument was visible at the surface. No documentation was found for the source of the harrison. This corner was excavated on May 22, 2008. Excavation yielded two iron monuments found at 7 inches deep: a railroad rail directly below the harrison and a 12 inch long bolt spike 0.75 foot south and 0.2 foot east of the rail. Further excavation yielded no more monuments. The area of excavation was 4 feet E-W by 4 feet N-S centered on the harrison, excavated to approximately 27 inches deep. The harrison monument was set in place of the railroad in the same position as the harrison which existed prior to excavation.

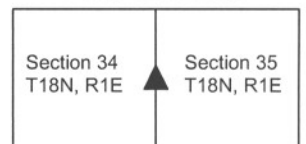
It is noted that this section of road is shown on the 1876 map of the county but the cross section of the material comprising the road does not match that of similar situations wherein a modern county road evolved from a wagon road. Typically, the cross section in such a situation is surface material (usually asphalt of varying thickness), under which is a tight gravel and stone substance under which is gravel of a looser, more sandy composition, under which is the base clay. Corner stones are generally found in the clay, protruding slightly into the bottom material of the road. This particular corner has a cross section of 5-6 inches of asphalt under which is 5-6 inches of packed asphalt millings under which is 12 inches of a green clay which is not similar to other base clay material observed in this vicinity. The natural brown clay begins at 2 feet deep, well below the surrounding ground level. It appears that reconstruction of the road has taken place in this area and it is logical to conclude that the stone was removed during that process. This corner was originally established as a wood post in June, 1820.



Kenneth E. Hedge
Kenneth E. Hedge, County Surveyor

James S. Swift
James S. Swift, IN LS 20200054
March 11, 2009

Perry Township



SECTION CORNER RECORD

BOONE COUNTY SURVEYOR'S OFFICE

SE 600-300

State Plane grid coordinates NAD83 (NSRS 2007):

Corner 1: North: 1714179.39 East: 3140761.91 (U.S. survey feet)

Corner 2: North: 1714180.84 East: 3140821.96 (U.S. survey feet)

CORNER WITNESS DETAIL

SCALE 1" = 40'



Corner 1:

Type of monument: Harrison, 4" disk 'Section Corner'

Depth: flush with adjacent ground.

Corner 2:

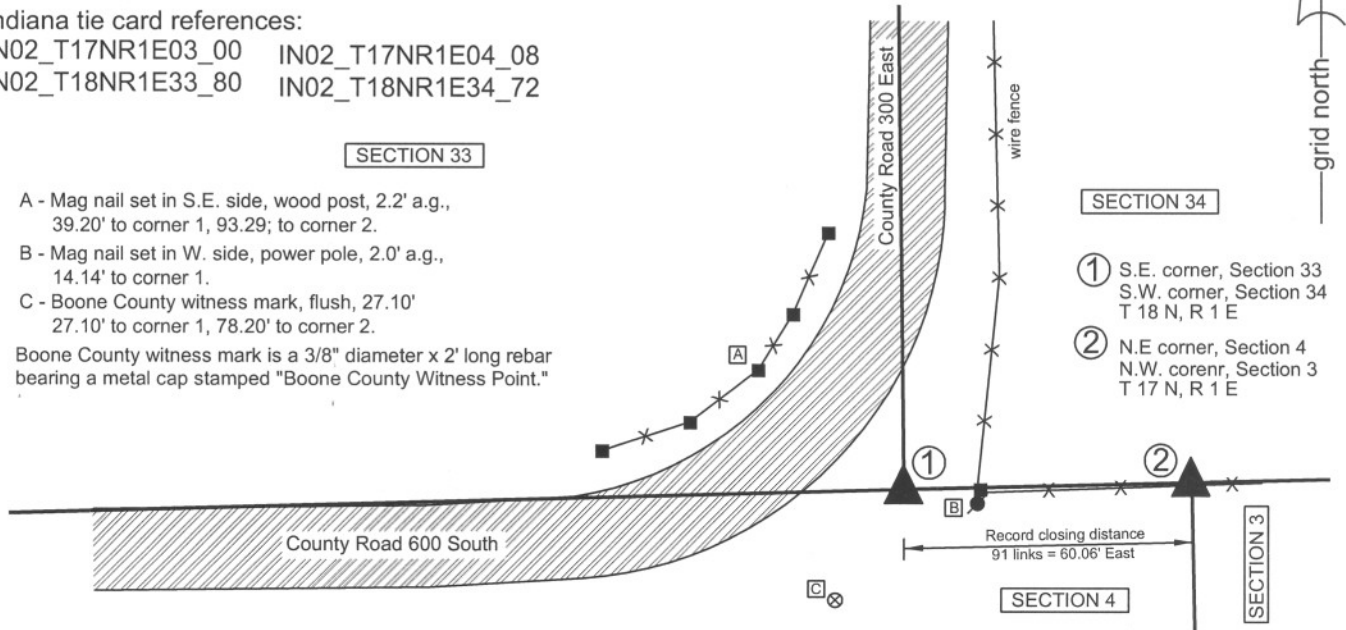
Type of monument: 5/8" rebar with metal cap stamped "Boone County Surveyor"

Depth: flush with adjacent ground.

Indiana tie card references:

IN02_T17NR1E03_00 IN02_T17NR1E04_08

IN02_T18NR1E33_80 IN02_T18NR1E34_72



A - Mag nail set in S.E. side, wood post, 2.2' a.g.,
39.20' to corner 1, 93.29; to corner 2.

B - Mag nail set in W. side, power pole, 2.0' a.g.,
14.14' to corner 1.

C - Boone County witness mark, flush, 27.10'
27.10' to corner 1, 78.20' to corner 2.

Boone County witness mark is a 3/8" diameter x 2' long rebar
bearing a metal cap stamped "Boone County Witness Point."

- SECTION 34
- ① S.E. corner, Section 33
S.W. corner, Section 34
T 18 N, R 1 E
 - ② N.E. corner, Section 4
N.W. corner, Section 3
T 17 N, R 1 E

The harrison monument at corner 1 was set in place of two stones found. The rebar at corner 2 was set in a calculated position. A BCS record of November 14, 1912 states with respect to corner 1 "Set rock corner between sec. 33 and 34. In line with rocks at f and F in sec. 34." No specific records were found for corner 2 beyond the original establishment of the corner in 1820. No BCS tie cards were found for either corner. Preliminary excavation occurred on May 22, 2008. Prior to excavation an iron pipe was found using a magnetic locator. The pipe was at the southerly prolongation of the approximate center of County Road 300 East and immediately west of a wood corner post to the east. It is noted that the wood corner post appears to be new, as does the section of fence attached to it to the east. The new section of fence blends into older fence approximately 300 feet east, at which point the fence is further north. Excavation revealed a stone approximately 1.9 feet north of the pipe. The stone is 24 inches E-W by 16 inches N-S by 8 inches thick. The letters "RT" are etched deeply into the top of the stone, with R to the west and T to the east. On May 22, the "RT" stone was left in place pending further research into the probable source of the letters. Research of the deed record uncovered two instances where the adjoining property owners had the respective names which begin with R (west, section 33) and T (east, section 34). In the early 1930s the property owners were Reed and Tague, while in the early 1940s the property owners were Ragan and Tyler. Tyler still owns land in section 34, though not the parcel immediately adjoining the corner. It is possible that the RT represents the initials of these property owners. On August 15, 2008 the RT stone was removed and another stone was found directly beneath it, being 14 inches deep, 13 inches E-W, 11 inches N-S and 8 inches thick. Local farmer Dan Tyler reports that the old fence to the east was built in the 1940s and that the position of the stones fit with the terminus of the old fence, now removed, which was slightly north of where the new fence is built. This observation fits with the fact that the old section of fence remaining further east is slightly north of the new fence. The two stones were accepted as the best evidence of the original location of corner 1 and the harrison monument was set in place of the stones, both of which were removed. No specific evidence was found for corner 2 and this corner was established on the township line at the original government closing distance of 91 links 60.06 feet. A 30 inch length of 5/8 inch diameter rebar bearing an aluminum cap stamped 'Boone County Surveyor' was set at this corner.

Corner 1 was originally established as a wood post in 1819 and corner 2 was originally established as a wood post in 1820.

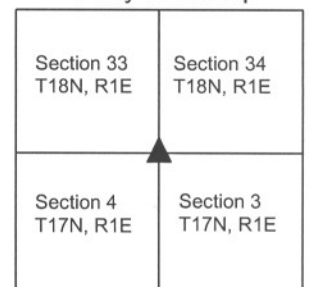


Kenneth E. Hedge
Kenneth E. Hedge, County Surveyor

James S. Swift
James S. Swift, IN LS 20200054

March 11, 2009, revised July 25, 2011

Perry Township



SECTION CORNER RECORD

SE 600-400

BOONE COUNTY SURVEYOR'S OFFICE

State Plane grid coordinates NAD83 (NSRS 2007):

North: 1714302.84 East: 3146089.70 (U.S. survey feet) corner 1

North: 1714305.84 East: 3146215.06 (U.S. survey feet) corner 2

Type of monument: Harrison, 4" disk 'Section Corner' (corner 1 only)

Depth: 3 inches above adjacent ground.

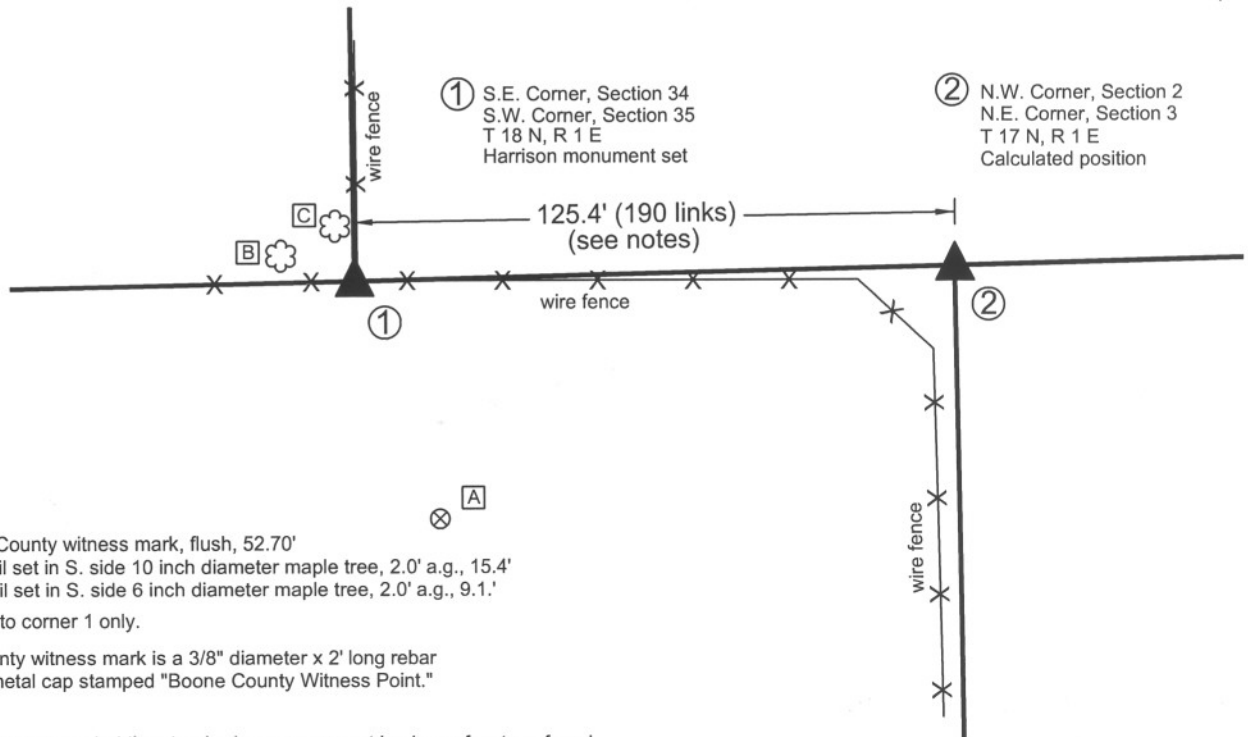
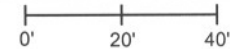
Indiana tie card references:

IN02_T17NR1E02_00 IN02_T17NR1E03_08

IN02_T18NR1E34_80 IN02_T18NR1E35_72

CORNER WITNESS DETAIL

SCALE 1" = 40'



- A - Boone County witness mark, flush, 52.70'
- B - Mag nail set in S. side 10 inch diameter maple tree, 2.0' a.g., 15.4'
- C - Mag nail set in S. side 6 inch diameter maple tree, 2.0' a.g., 9.1.'

All ties are to corner 1 only.

Boone County witness mark is a 3/8" diameter x 2' long rebar bearing a metal cap stamped "Boone County Witness Point."

The harrison monument at the standard corner was set in place of a stone found.

A BCS record of November 14, 1912 states "Re-Est. by measure & intersection. Set rock 17,12,11 +." No recent BCS tie cards were found referencing this corner. The record stone was found buried, with a small portion of the top of the rock exposed, under the E-W fence adjacent to and immediately west of an old corner post at the intersection of fence to the east, west and north. The stone was generally horizontal with a distinct top protruding slightly from the dirt. The stone was removed from its position and measured. The main stone measures the record dimensions of 17x12x11 inches. A small 2 inch protrusion causes a technical maximum dimension of 19 inches, but the main stone is clearly the record dimensions. No specific markings were found on the stone. The surface is quite rough and it is not as clear what might be intentional markings as on smoother surfaced stones. The stones were rolled to the north and the harrison monument was set in the position of the stone as originally found. The closing corner falls on the edge of a lake and no monument was set. The original government notes for this corner state that the corner is 99 links east of the standard corner. However, a record in the BCS Surveyor's Record dated December 2, 1889 states "Found lap as corners are established at 190 links instead of 99 as per Record of original." Establishing the closing corner at 190 links east causes the corner to fall approximately 4 feet east of the northerly prolongation of an old N-S fence. The coordinates shown above for the computed corner hold the 190 link distance, per the 1889 record.

The standard corner was originally established as a wood post in 1819 and the closing corner was established in 1820.



Kenneth E. Hedge
 Kenneth E. Hedge, County Surveyor

James S. Swift
 James S. Swift, IN LS 20200054
 July 14, 2010

Perry Township

Section 34 T18N, R1E	Section 35 T18N, R1E
Section 3 T17N, R1E	Section 2 T17N, R1E

PHOTOGRAPHIC DOCUMENTATION

Date of photography: May 7, 2008 and November 3, 2009

The stone as found and exposed in 2008.



The stone and post in 2009.



The stone and post in 2009.



For details and documentation, refer to related sheet "Section Corner Record."