

SECTION CORNER RECORD

NW 600-900

BOONE COUNTY SURVEYOR'S OFFICE

Data for Corner 2 only:

State Plane grid coordinates NAD83 (2011):

North: 1777403.22 East: 3077228.52 (U.S. survey feet)

Type of monument: Harrison, 4" disk 'Section Corner'

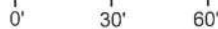
Depth: One inch above adjacent ground

Indiana tie card references:

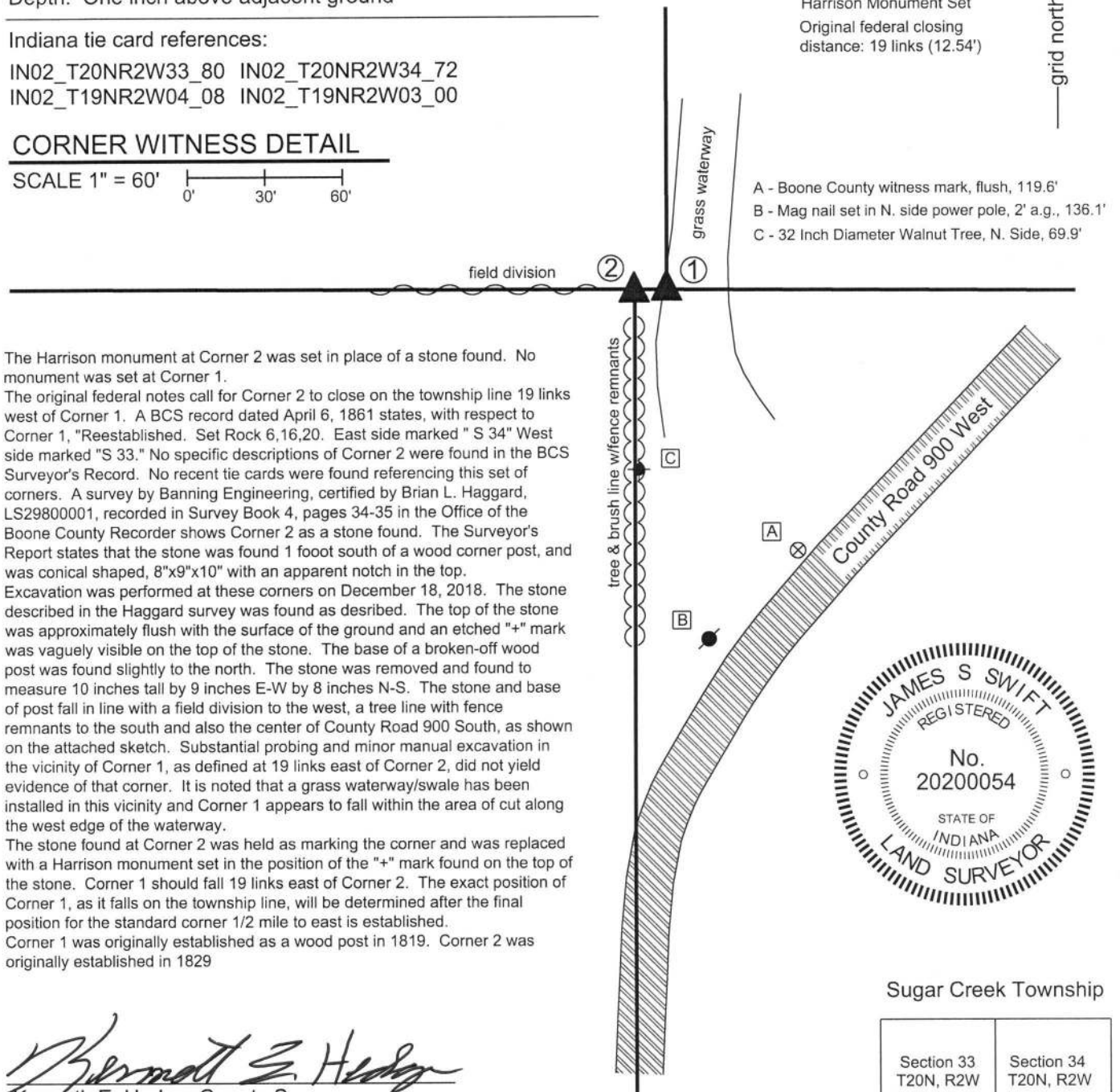
IN02_T20NR2W33_80 IN02_T20NR2W34_72
 IN02_T19NR2W04_08 IN02_T19NR2W03_00

CORNER WITNESS DETAIL

SCALE 1" = 60'



- ① S.E. Corner, Section 33
 S.W. Corner, Section 34
 T 20 N, R 2 W
 Final position not determined
- ② N.W. Corner, Section 3
 N.E. Corner, Section 4
 Harrison Monument Set
 Original federal closing
 distance: 19 links (12.54')



The Harrison monument at Corner 2 was set in place of a stone found. No monument was set at Corner 1.

The original federal notes call for Corner 2 to close on the township line 19 links west of Corner 1. A BCS record dated April 6, 1861 states, with respect to Corner 1, "Reestablished. Set Rock 6,16,20. East side marked " S 34" West side marked "S 33." No specific descriptions of Corner 2 were found in the BCS Surveyor's Record. No recent tie cards were found referencing this set of corners. A survey by Banning Engineering, certified by Brian L. Haggard, LS29800001, recorded in Survey Book 4, pages 34-35 in the Office of the Boone County Recorder shows Corner 2 as a stone found. The Surveyor's Report states that the stone was found 1 foot south of a wood corner post, and was conical shaped, 8"x9"x10" with an apparent notch in the top. Excavation was performed at these corners on December 18, 2018. The stone described in the Haggard survey was found as described. The top of the stone was approximately flush with the surface of the ground and an etched "+" mark was vaguely visible on the top of the stone. The base of a broken-off wood post was found slightly to the north. The stone was removed and found to measure 10 inches tall by 9 inches E-W by 8 inches N-S. The stone and base of post fall in line with a field division to the west, a tree line with fence remnants to the south and also the center of County Road 900 South, as shown on the attached sketch. Substantial probing and minor manual excavation in the vicinity of Corner 1, as defined at 19 links east of Corner 2, did not yield evidence of that corner. It is noted that a grass waterway/swale has been installed in this vicinity and Corner 1 appears to fall within the area of cut along the west edge of the waterway.

The stone found at Corner 2 was held as marking the corner and was replaced with a Harrison monument set in the position of the "+" mark found on the top of the stone. Corner 1 should fall 19 links east of Corner 2. The exact position of Corner 1, as it falls on the township line, will be determined after the final position for the standard corner 1/2 mile to east is established.

Corner 1 was originally established as a wood post in 1819. Corner 2 was originally established in 1829

Sugar Creek Township

| | |
|-------------------------|-------------------------|
| Section 33 T20N, R2W | Section 34 T20N, R2W |
| Section 4 T19N, R2W | Section 3 T19N, R2W |

Kenneth E. Hedge
 Kenneth E. Hedge, County Surveyor

James S. Swift
 James S. Swift, IN LS 20200054
 January 9, 2019

SECTION CORNER RECORD

BOONE COUNTY SURVEYOR'S OFFICE

NW 700-900

State Plane grid coordinates NAD83 (CORS96):

North: 1782726.77 East: 3077227.80 (U.S. survey feet)

Type of monument: Harrison, 4" disk 'Section Corner'

Depth: generally flush with ground along steep hillside

Indiana tie card references:

IN02_T20NR2W28_80 IN02_T20NR2W27_72

IN02_T20NR2W33_08 IN02_T20NR2W34_00

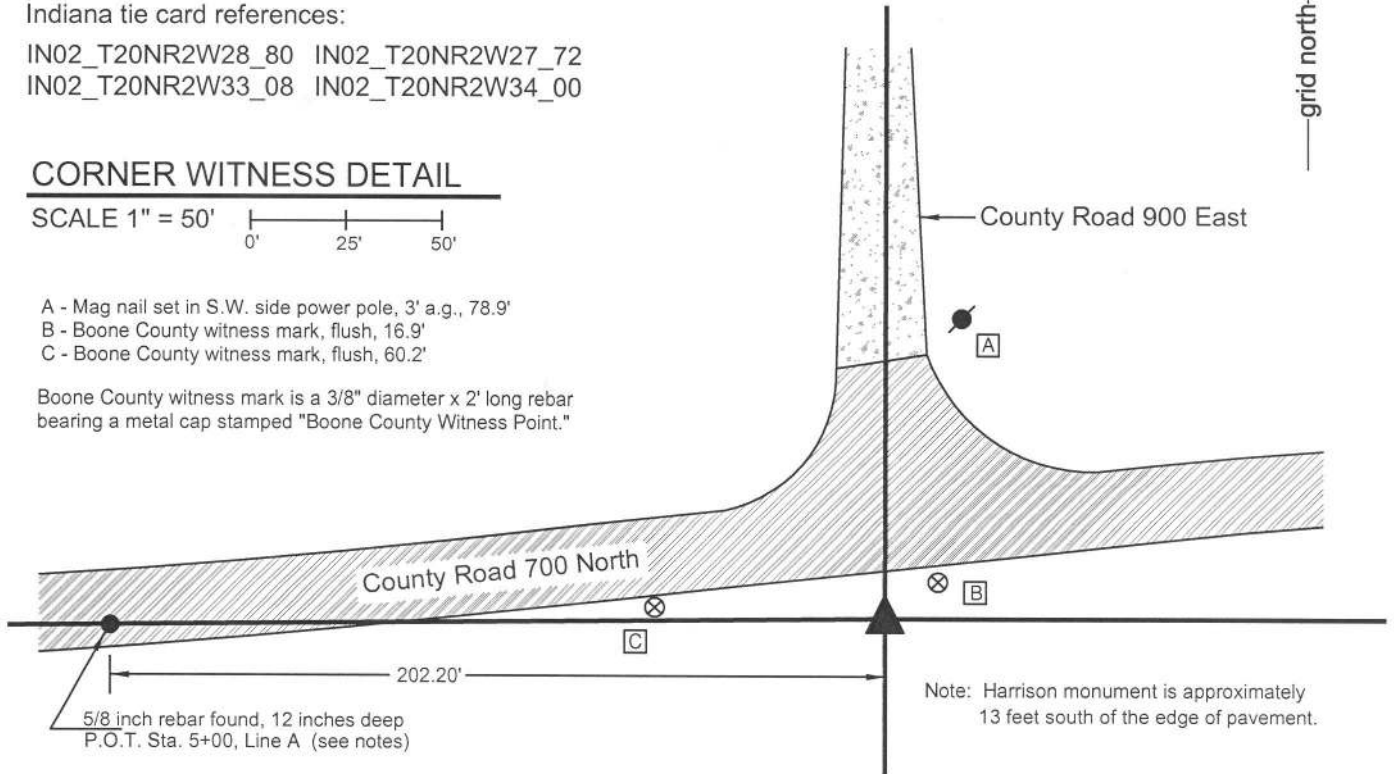


CORNER WITNESS DETAIL

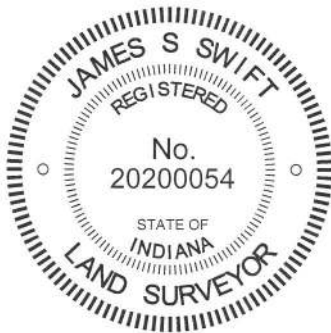
SCALE 1" = 50'

- A - Mag nail set in S.W. side power pole, 3' a.g., 78.9'
- B - Boone County witness mark, flush, 16.9'
- C - Boone County witness mark, flush, 60.2'

Boone County witness mark is a 3/8" diameter x 2' long rebar bearing a metal cap stamped "Boone County Witness Point."



The Harrison monument was set in a calculated position per bridge plans. No specific descriptions of this corner were found in the old BCS Surveyor's Record, nor were any recent BCS tie cards found referencing this corner. Significant excavation was not performed at this corner due to the fact that it is situated in an area of significant fill material associated with the approach to a bridge over Sugar Creek immediately to the east. The position of this corner was determined in October 2014. During reconnaissance beginning October 16, 2014 no monumentation was found marking the corner. The plans for the adjacent bridge were provided by the Boone County Highway Department. These plans are dated June 6, 1995, referenced as project BRO-9906. These plans show the corner as being a "Blt. Spike, Sec. Cor." and reference the corner as being at Sta. P.O.T. 7+02.20, Line A. The original control monuments for the bridge plans are a rebar at P.O.T. 5+00.00, Line A and a rebar at P.O.T. 18+41.93, Line A. Both of these rebars were recovered, apparently undisturbed, and located at the proper distance apart from each other, per the stations. The rebar at 5+00 is in the road 12 inches deep and the rebar at 18+41.93 is in the road 3 inches deep. These two rebars were held as defining line A for the bridge plans. The section corner was established at 202.20 feet east of the rebar at station 5+00 and a Harrison monument was set at this position. It is noted that the plans graphically demonstrate this corner as having been in the center of the T-intersection of the two roads, prior to reconstruction of the roads. This position did fit well with the centers of the road north and west, as they are located beyond the areas of reconstruction. Furthermore, this position fit well with the relative positions of a stone found at the quarter section corner 1/2 mile west and the approximate location of the quarter-quarter corner 1/4 mile west, being in the center of the east-west road and in line with an old fence to the north. It is further noted that excavation was performed at this quarter-quarter corner but no physical evidence of the corner was found except the road and fence. The Harrison monument is set within a section of 10 inch diameter HDPE storm pipe set vertically, 22 inches tall, filled with concrete. This monument falls along the slope of the fill area approximately 13 feet south of the south edge of pavement of the road, in line with the center of the road to the north. This corner was originally established as a wood post in 1829.



Kenneth E. Hedge
 Kenneth E. Hedge, County Surveyor

James S. Swift
 James S. Swift, IN LS 20200054
 March 27, 2015

Sugar Creek Twp.

| | |
|-------------------------|-------------------------|
| Section 28 T20N, R2W | Section 27 T20N, R2W |
| Section 33 T20N, R2W | Section 34 T20N, R2W |

SECTION CORNER RECORD

NW 700-950

BOONE COUNTY SURVEYOR'S OFFICE

State Plane grid coordinates NAD83 (CORS96):

North: 1782701.85 East: 3074557.74 (U.S. survey feet)

Type of monument: Harrison, 4" disk 'Section Corner'

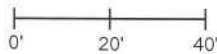
Depth: six inches below adjacent gravel road surface

Indiana tie card references:

IN02_T20NR2W28_76 IN02_T20NR2W33_04

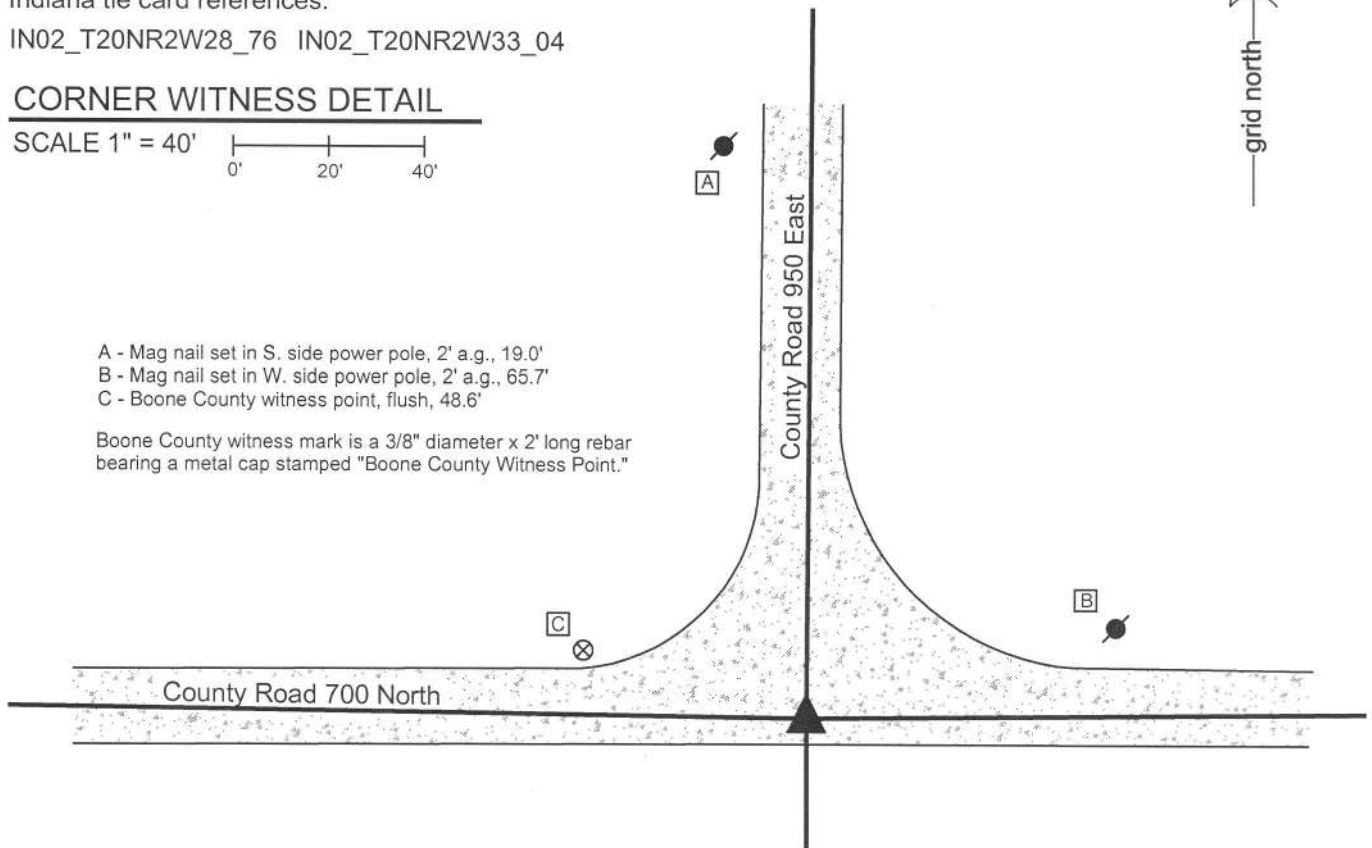
CORNER WITNESS DETAIL

SCALE 1" = 40'



- A - Mag nail set in S. side power pole, 2' a.g., 19.0'
- B - Mag nail set in W. side power pole, 2' a.g., 65.7'
- C - Boone County witness point, flush, 48.6'

Boone County witness mark is a 3/8" diameter x 2' long rebar bearing a metal cap stamped "Boone County Witness Point."



The Harrison monument was set in place of a stone found.

A BCS record dated March 16, 1863 states, with respect to this corner, "A stone that was set. One tree gree, stump of the other here. Line Crooked E & W." No recent BCS tie cards were found referencing this corner. Subsequent records up to 1925 reference this corner as the terminal point for measurements, though contain no specific description of the corner or monumentation.

Excavation was performed at this corner on October 29, 2014. No metal monuments were found prior to excavation. A stone was found at 5 inches deep at the intersection of the gravel roads to the North, East and West. The stone was vertical with a clear and distinct high point. The north and east sides of the stone were flat and vertical. The stone was removed from the road, measured and found to be 24 inches tall by 12 inches E-W by 10 inches N-S. No specific marks were found. The stone clearly appeared to be a corner stone. It was situated slightly south of the center of the T-intersection but well in line with the centers of the roads to the North, East and West. The stone is approximately 31 feet south of a straight line connecting the section corners 1/2 mile east and west, respectively. This fact harmonizes reference in the 1863 record of "line crooked E & W." The stone was accepted as the best available evidence of the corner. In order for a Harrison monument to be set below the depth at which road graders may disturb the road bed, the stone was removed and replaced with a Harrison monument set in the position of the top, high point of the stone. This corner was originally established as a wood post in 1829.



Kenneth E. Hedge
Kenneth E. Hedge, County Surveyor

James S. Swift
James S. Swift, IN LS 20200054
March 27, 2015

Sugar Creek Township

Section 28
T20N, R2W

Section 33
T20N, R2W

PHOTOGRAPHIC DOCUMENTATION

Date of photography: October 29, 2014

The stone as originally found.



The stone more fully exposed.



The stone removed from the road.
This view shows the north side of the
stone, as it was situated in the road.



View from the south, looking across the stone
and north along County Road 900 West.



The stone removed from the road.
This view shows the north and east sides
of the stone, as it was situated in the road.



For details and documentation, refer to
related sheet "Section Corner Record."

SECTION CORNER RECORD

NW 700-1000

BOONE COUNTY SURVEYOR'S OFFICE

State Plane grid coordinates NAD83 (2011):
North: 1782740.08 East: 3071902.64 (U.S. survey feet)

Type of monument: Harrison, 4" disk 'Section Corner'
Depth: Six inches below adjacent gravel road surface

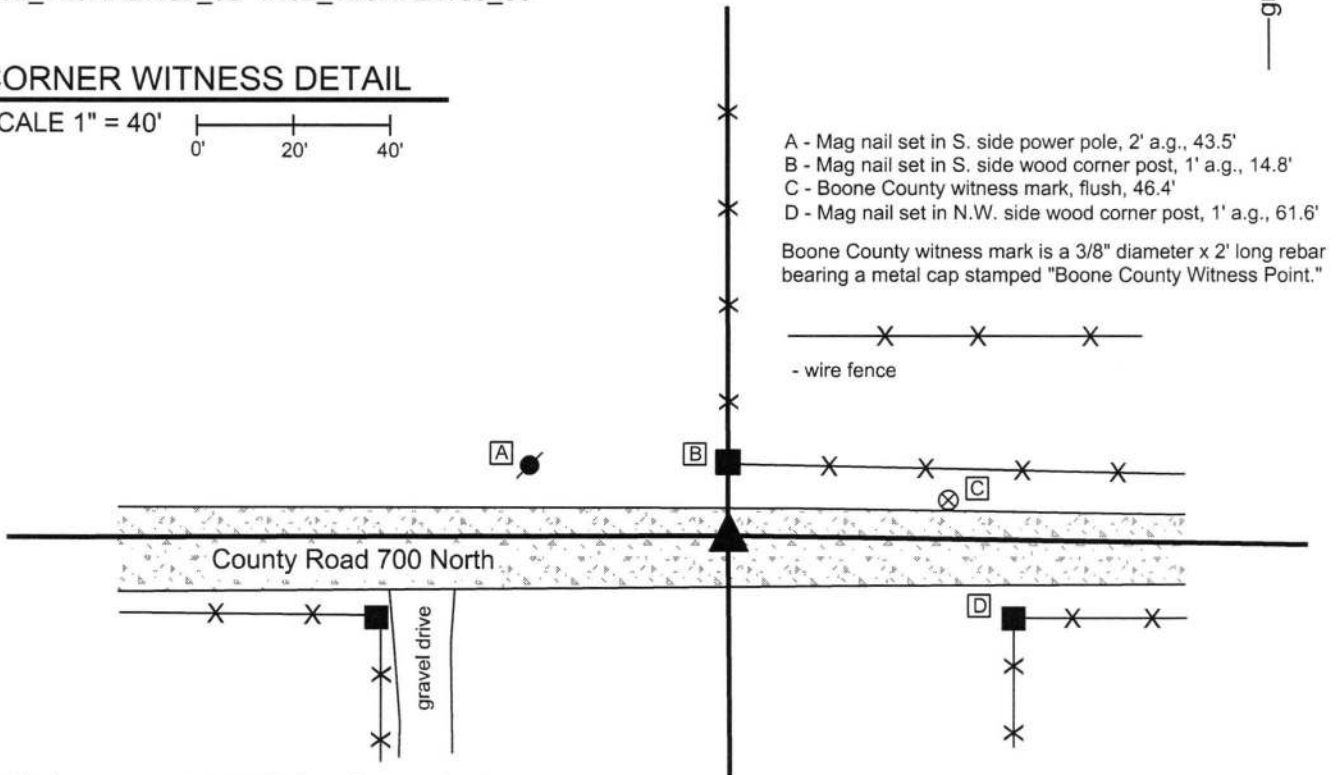
Indiana tie card references:

IN02_T20NR2W29_80 IN02_T20NR2W28_72
IN02_T20NR2W32_08 IN02_T20NR2W33_00



CORNER WITNESS DETAIL

SCALE 1" = 40'
0' 20' 40'

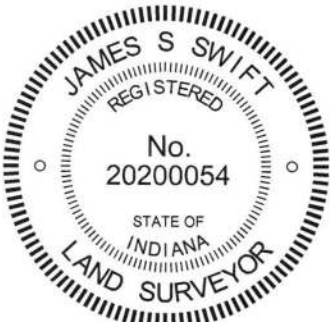


The Harrison monument was set in place of a stone found.
A BCS record dated March 16, 1863 states, with respect to this corner, "Reestablished. Both trees just cut down. Set a Rock 24,12,8 mark across the top. 1 notch on S. corner of Rock, 4 on E corner, 5 on N, and 2 on the West. "

No recent tie cards were found referencing this corner.
Excavation was performed at this corner on June 21, 2016. No metal monuments were found prior to excavation. Excavation was centered on a point one rod south of the well established wood corner post at the north edge of the road, being the corner for fences to the north and east. A stone was found at 5 inches deep in the gravel road. The stone was of red granite material and was found standing vertically with a distinct high point. The stone was oriented in the NW-SE direction with the NE and SW sides being flat and vertical. It appeared in the field that the top of the stone had been worn by road grading equipment. Hence, no marks were found on the top of the stone. However, the notches called for in the 1863 description of the monument were found in the form of distinctly visible notches carved into the edges of the rock beginning at approximately 6 inches below the top of the rock. The stone was removed, measured, and found to be 23 inches tall by 12 inches NW-SE by 8 inches wide at the base. The upper part of the rock is approximately 6 inches wide.

The stone was accepted as being the same monument called for in the 1863 records. The stone was removed and replaced with a Harrison monument in the same position.

This corner was originally established as a wood post in 1829.



Kenneth E. Hedge
Kenneth E. Hedge, County Surveyor

James S. Swift
James S. Swift, IN LS 20200054
March 23, 2017

Sugar Creek TWP

| | |
|-------------------------|-------------------------|
| Section 29 T20N, R2W | Section 28 T20N, R2W |
| Section 32 T20N, R2W | Section 33 T20N, R2W |

PHOTOGRAPHIC DOCUMENTATION

Date of photography: 7/5/2016

View from above and west, showing the west side of the stone and the notches on the NW and SW edges of the stone.



View of the stone from above and south.



View of the stone and the post on the north side of County Road 700 North.



View looking across the stone and east along County Road 700 North



For details and documentation, refer to related sheet "Section Corner Record."