

SECTION CORNER RECORD

BOONE COUNTY SURVEYOR'S OFFICE

NE 650-800

State Plane grid coordinates NAD83 (CORS96):

North: 1780956.98 East: 3166764.11 (U.S. survey feet)

Type of monument: Harrison, 4" disk 'Section Corner'

Depth: six inches below adjacent gravel road surface

Indiana tie card references:

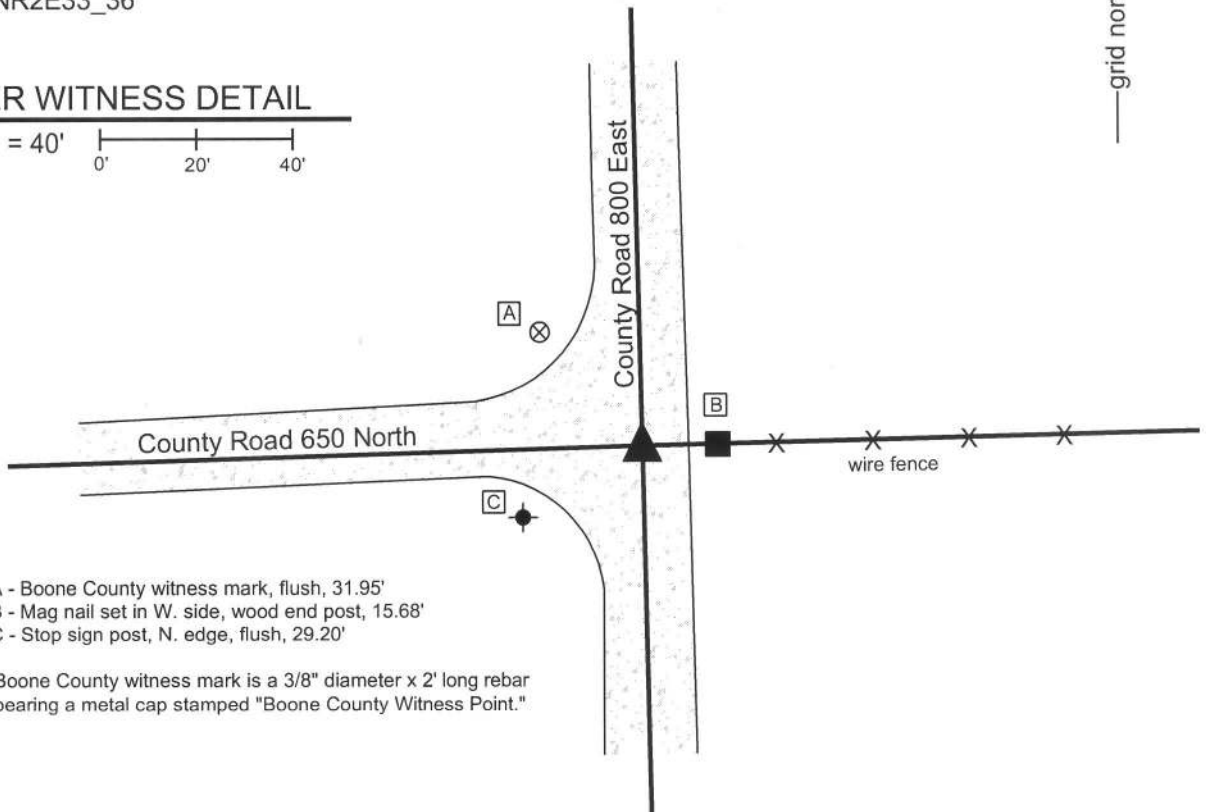
IN02_T20NR2E32_44

IN02_T20NR2E33_36



CORNER WITNESS DETAIL

SCALE 1" = 40'



- A - Boone County witness mark, flush, 31.95'
- B - Mag nail set in W. side, wood end post, 15.68'
- C - Stop sign post, N. edge, flush, 29.20'

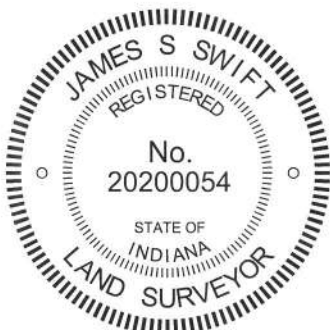
Boone County witness mark is a 3/8" diameter x 2' long rebar bearing a metal cap stamped "Boone County Witness Point."

The harrison monument was set in place of a rebar found.

A BCS record of January 19, 1859 states "Reestablished from stumps of root of both trees." The record does not mention what monument may have been set at the corner. A BCS tie card dated October 8, 1974 states "No stone found."

This corner was excavated on July 25, 2013. Prior to excavation a 5/8 inch diameter rebar was found in agreement with the one remaining tie (post to the east) shown on the 1974 tie card. Excavation of an area extending 4 feet west, 3 feet south, 4 feet east and 5 feet north, though cut off at a 45 degree angle across the northeast side of the excavation area, due to the presence of a phone line marked by IUPPS, revealed no further evidence. Excavation extended to the depth of the clay layer below the road at 16 inches deep. The found rebar is in the center of the north-south road, slightly south of the center of the road to the east but in line with the fence to the east. Given the lack of further, contrary evidence and the agreement of the rebar with the 1974 ties and the local evidence of the corner, the rebar was held as marking the corner. The rebar was replaced with a harrison monument, set in the same position.

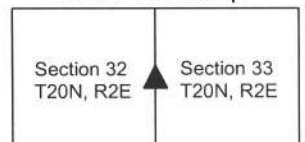
This corner was originally established as a wood post in 1821.



Kenneth E. Hedge
 Kenneth E. Hedge, County Surveyor

James S. Swift
 James S. Swift, IN LS 20200054
 February 5, 2015

Marion Township



SECTION CORNER RECORD

NE 650-900

BOONE COUNTY SURVEYOR'S OFFICE

State Plane grid coordinates NAD83 (CORS96):

North: 1781148.04 East: 3172080.72 (U.S. survey feet)

Type of monument: Harrison, 4" disk 'Section Corner'

Depth: One inch below adjacent road surface

Indiana tie card references:

IN02_T20NR2E33_44 IN02_T20NR2E34_36

CORNER WITNESS DETAIL

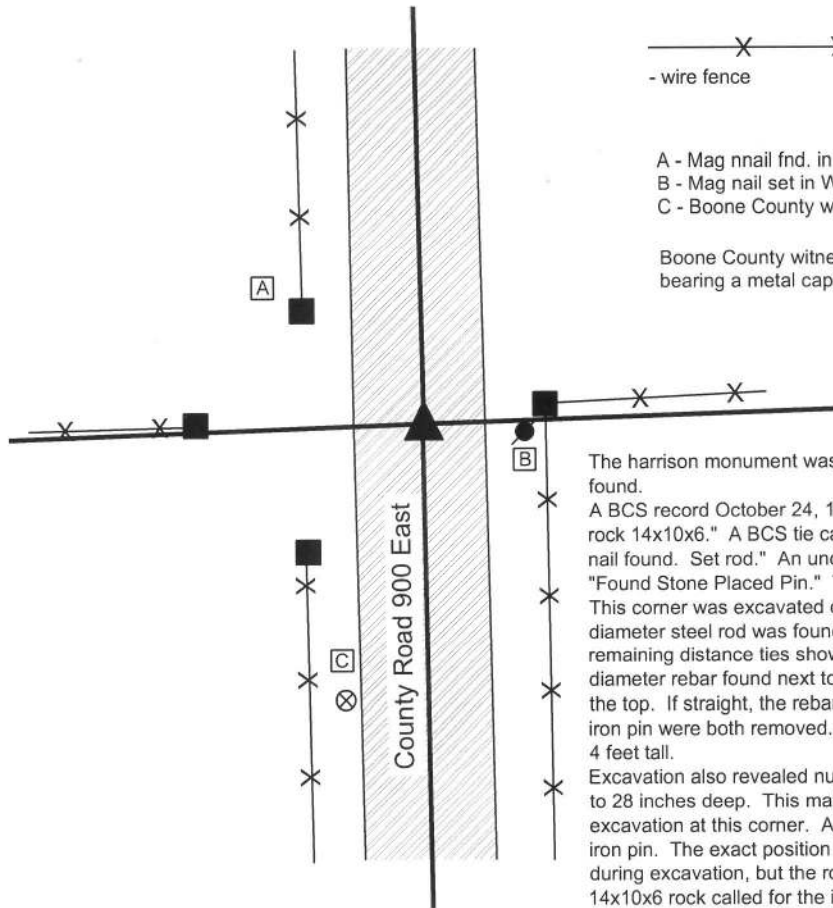
SCALE 1" = 30'



- wire fence

- A - Mag nail fnd. in S.E. corner wood post, 1.5 a.g., 25.33'
- B - Mag nail set in W. side power pole, 2' a.g., 14.38'
- C - Boone County witness mark, flush, 44.94'

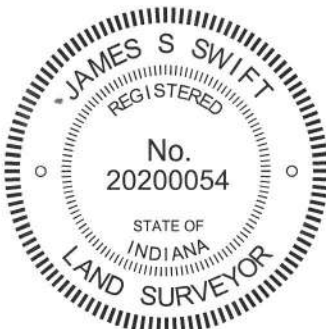
Boone County witness mark is a 3/8" diameter x 2' long rebar bearing a metal cap stamped "Boone County Witness Point."



The Harrison monument was set in place of a 3/4 inch diameter solid steel rod found.

A BCS record October 24, 1907 states "Located in line with A & G and set a rock 14x10x6." A BCS tie card dated May 8, 1975 states "No stone found. PK nail found. Set rod." An undated tied card with the name I.D. Miller states "Found Stone Placed Pin." The distance ties are identical on the two tie cards. This corner was excavated on June 13, 2013. Prior to excavation a 3/4 inch diameter steel rod was found at the surface, in agreement with the two remaining distance ties shown on the tie cards. Excavation revealed a 1/2 inch diameter rebar found next to the steel rod. The rebar was bent at 7 inches from the top. If straight, the rebar would have been 5 inches deep. The rebar and iron pin were both removed. The rebar was 16 inches tall and the steel rod was 4 feet tall.

Excavation also revealed numerous pieces of asphalt in the fill material, from 20 to 28 inches deep. This material was accepted as evidence of previous excavation at this corner. A small rock (7"x4"x4") was found in the area of the iron pin. The exact position of the rock was not determined as it was displaced during excavation, but the rock did not match or approximate the dimensions of 14x10x6 rock called for in the 1907 record. It may have been the rock mentioned on the undated tie card. An area being 5 foot N-S by 5 foot E-W, area centered on the position of the steel rod, was excavated to a depth of 3 feet, well into the clay layer below the road. This excavation yielded no further evidence of the corner. Probing to 2 feet deeper and 1 foot further west also yielded no further evidence. The position of the steel rod, as originally found, was held as the corner. A Harrison monument was set in this position. This corner was originally established as a wood post in 1821.



Kenneth E. Hedge

 Kenneth E. Hedge, County Surveyor

James S. Swift

 James S. Swift, IN LS 20200054
 February 5, 2015

Marion Township

Section 33 T20N, R2E	▲	Section 34 T20N, R2E
-------------------------	---	-------------------------

SECTION CORNER RECORD

NE 700-800

BOONE COUNTY SURVEYOR'S OFFICE

State Plane grid coordinates NAD83 (CORS96):

North: 1783624.03 East: 3166701.64 (U.S. survey feet)

Type of monument: Harrison, 4" disk 'Section Corner'

Depth: six inches below adjacent gravel road surface

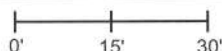
Indiana tie card references:

IN02_T20NR2E29_80 IN02_T20NR2E28_72

IN02_T20NR2E32_08 IN02_T20NR2E33_00

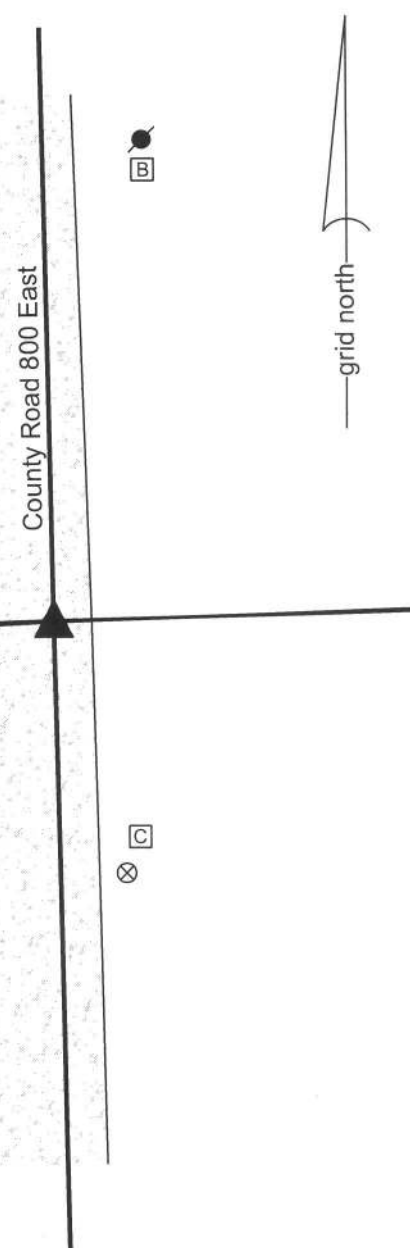
CORNER WITNESS DETAIL

SCALE 1" = 30'



- A - Boone County witness mark, flush, 26.06'
- B - Mag nail set in s. side power pole, 2' a.g., 75.65'
- C - Boone County witness mark, flush, 40.74'

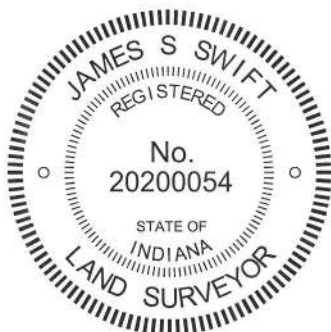
Boone County witness mark is a 3/8" diameter x 2' long rebar bearing a metal cap stamped "Boone County Witness Point."



The harrison monument was set in place of a railroad spike found.

A BCS record of October 4, 1886 states "Reestablished from stump of Beech (S 9° W). Set Rock 19x15x13+, witness 12x13x8+ bears S38°E 44 lks." A BCS tie card dated August 10, 1974 states "small stone found" and graphically demonstrates the corner to be at the midpoint between end posts for the fences to the east and west.

This corner was excavated on August 2, 2013. Prior to excavation a railroad spike was found at 2 inches deep in the gravel road. Excavation of an area extending 3.5 feet N, 5 feet E, 3.5 feet S and 5 feet W revealed no further evidence of the corner. The reference on the 1974 tie card to a "small stone found" does not harmonize with the 1886 call for a stone 19x15x13, which would probably not have been considered "small" by a BCS crew of that, or any, era. It is noted that the railroad spike is not consistent with the type of monument known to be used by BCS crews in 1975. It is also noted that the road bed was found to consist of only 5 inches of material above the clay layer. Typically corner stones are found to be embedded in the clay layer below the road, protruding 2 to 5 inches into the bottom of the road bed. Given the minimal road bed at this corner, it is highly likely that the 1886 record stone was repeatedly hit by road grading equipment and possible removed for that reason. The railroad spike does fit with local evidence in the form of the field division to the west. The spike was near the east side of the road, as were the corner stones found 1/2 and 1 mile north, respectively of this corner. The witness stone called for in the 1886 record was searched for in the form of probing. The expected position of the witness stone falls either in the road side ditch or the adjacent plowed field. Probing revealed no evidence of the witness stone. Given the lack of contrary evidence, the position of the railroad spike was held as marking the corner and the railroad spike was replaced with a harrison monument. This corner was originally established as a wood post in June, 1821.



Kenneth E. Hedge
Kenneth E. Hedge, County Surveyor

James S. Swift
James S. Swift, IN LS 20200054
February 5, 2015

Marion Township

Section 29 T20N, R2E	Section 28 T20N, R2E
Section 32 T20N, R2E	Section 33 T20N, R2E

SECTION CORNER RECORD

NE 700-850

BOONE COUNTY SURVEYOR'S OFFICE

State Plane grid coordinates NAD83 (2011):

North: 1783711.76 East: 3169366.37 (U.S. survey feet)

Type of monument: Harrison, 4" disk 'Section Corner'

Depth: Four inches above adjacent ground

Indiana tie card references:

IN02_T20NR2E28_76 IN02_T20NR2E33_04

CORNER WITNESS DETAIL

No Scale

The Harrison monument is situated at the north edge of a wood post at the intersection of field divisions to the north, south, and west. The monument is 0.95 feet north of the north edge of the post and is witnessed by an orange fiberglass lathe 'survey marker.' No other distance ties are provided.

field division

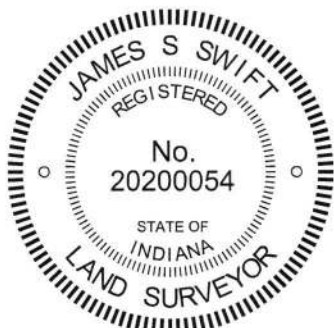
field division

field division



A BCS Record dated February 16, 1869 states, with respect to this corner, "Reestablished from Ash, set a Rock 15 by 14.11 marked +." No Recent BCS tie cards were found referencing this corner.

This corner was excavated on March 5, 2018. Prior to excavation, a wood post was found at the intersection of field divisions to the north, south and west. The post is also in line with fences which are yet standing, but not in the immediate vicinity of the corner, to the west and south. Excavation around the post revealed a horizontal piece of cedar wood found at the south edge of the post and two stones found approximately 1 foot north of the post. The two stones were situated one on top of the other. The top stone was found at 3 inches below grade and measured 11 inches tall by 5 inches E-W by 7 inches N-S. The lower stone was found directly below the top stone at 14 inches deep and measured 8 inches by 8 inches by 6 inches. No specific markings were observed on the stones. With the top stone being vertical and directly above the lower stone, the two stones appeared in the field to be purposely set as cornerstones and did not appear to be acting as braces for the adjacent post. Extensive probing and manual excavation around the post revealed no further evidence of the corner. The rock mentioned in the 1869 record was not found. It is noted that this corner is in a local low area which appears to have been muddy and wet over the years. It has been observed at other corners that such a condition yields less likelihood of finding specifically described monuments from the 1800s. The post is neither large nor evidently ancient but the position of the post and stones fit very well with the relative distances to proximate corners and fit well with remote evidence of fences to the south and west. The two stones were accepted as providing the best available evidence of the corner. The stones were removed and replaced with a Harrison monument in the same position.



Kenneth E. Hedge
Kenneth E. Hedge, County Surveyor

James S. Swift
James S. Swift, IN LS 20200054
March 14, 2018

Marion Township

Section 28
T20N, R2E



Section 33
T20N, R2E

SECTION CORNER RECORD

BOONE COUNTY SURVEYOR'S OFFICE

NE 700-900

State Plane grid coordinates NAD83 (CORS96):

North: 1783792.92 East: 3172020.45 (U.S. survey feet)

Type of monument: Harrison, 4" disk 'Section Corner'

Depth: One inch below adjacent road surface

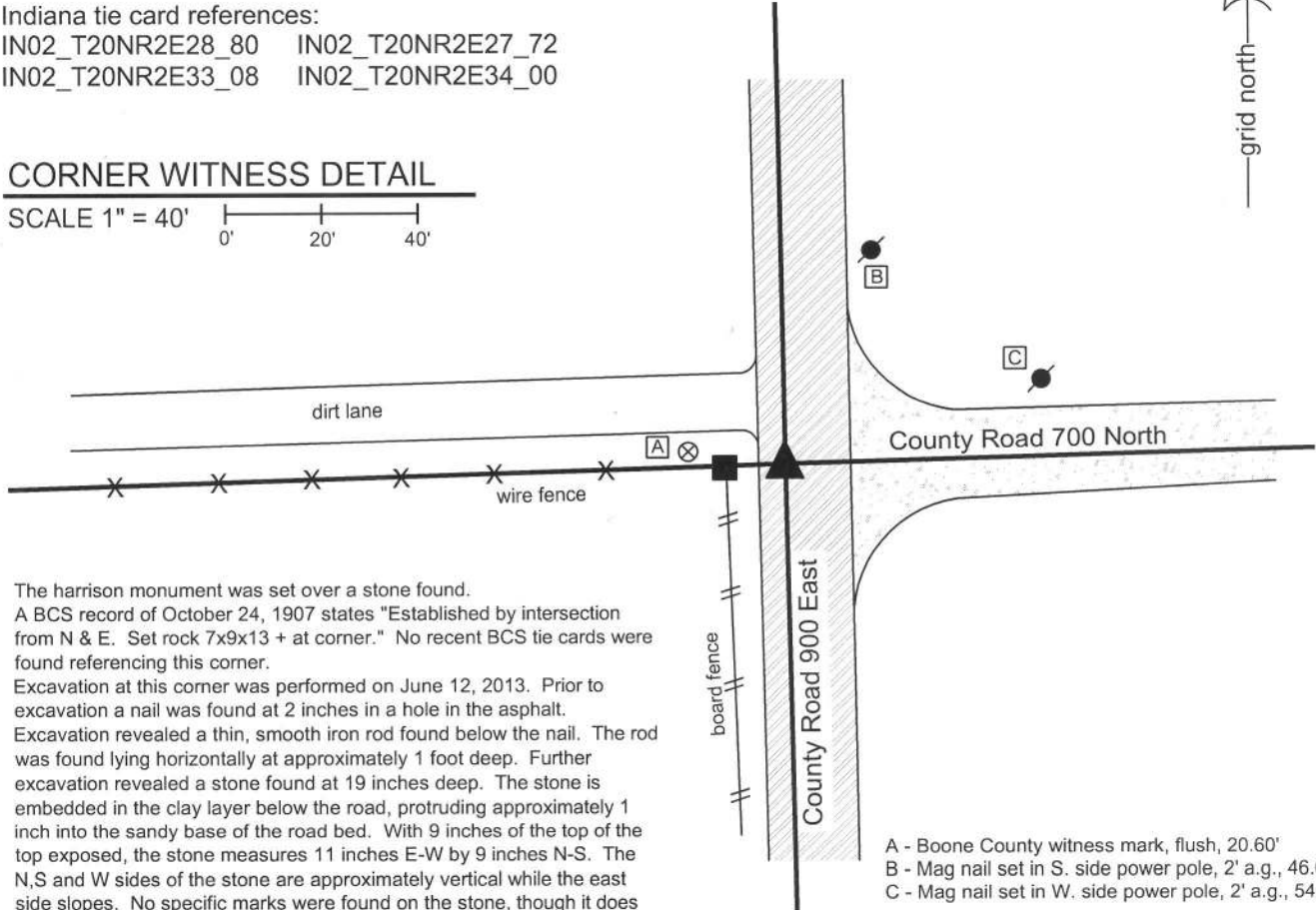
Indiana tie card references:

IN02_T20NR2E28_80 IN02_T20NR2E27_72

IN02_T20NR2E33_08 IN02_T20NR2E34_00

CORNER WITNESS DETAIL

SCALE 1" = 40'



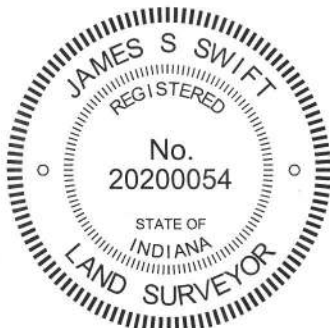
The harrison monument was set over a stone found.
A BCS record of October 24, 1907 states "Established by intersection from N & E. Set rock 7x9x13 + at corner." No recent BCS tie cards were found referencing this corner.

Excavation at this corner was performed on June 12, 2013. Prior to excavation a nail was found at 2 inches in a hole in the asphalt. Excavation revealed a thin, smooth iron rod found below the nail. The rod was found lying horizontally at approximately 1 foot deep. Further excavation revealed a stone found at 19 inches deep. The stone is embedded in the clay layer below the road, protruding approximately 1 inch into the sandy base of the road bed. With 9 inches of the top of the top exposed, the stone measures 11 inches E-W by 9 inches N-S. The N,S and W sides of the stone are approximately vertical while the east side slopes. No specific marks were found on the stone, though it does have a distinct high point at the top, near the west edge. The stone appears to be slightly larger than that described in the 1907 record though of similar proportions in the E-W and N-S dimensions. It is not clear whether this is the same monument as described in the 1907 record. The stone is west of the center of the road at the intersection but in line with the center of the road extended north and south. The stone is in line with the fence to the west and the road to the east. The stone was left in place and a harrison monument was set over the top, high point of the stone. The nail, removed during excavation, had been 0.4 foot north and 2.5 feet east of the stone.

This corner was originally established as a wood post in 1821.

- A - Boone County witness mark, flush, 20.60'
- B - Mag nail set in S. side power pole, 2' a.g., 46.64'
- C - Mag nail set in W. side power pole, 2' a.g., 54.44'

Boone County witness mark is a 3/8" diameter x 2' long rebar bearing a metal cap stamped "Boone County Witness Point."



Kenneth E. Hedge
Kenneth E. Hedge, County Surveyor

James S. Swift
James S. Swift, IN LS 20200054
February 5, 2015

Marion Township

Section 28 T20N, R2E	Section 27 T20N, R2E
Section 33 T20N, R2E	Section 34 T20N, R2E

PHOTOGRAPHIC DOCUMENTATION

Date of photography: June 12, 2013

View of the stone as first exposed.



View of the stone from above.



View from the north,
looking south along C.R. 900 East.



View from the east,
looking west along the adjacent fence line.



For details and documentation, refer to related sheet "Section Corner Record."