

# SECTION CORNER RECORD

NW 000-300

## BOONE COUNTY SURVEYOR'S OFFICE

State Plane grid coordinates NAD83 (2011):

North: 1745549.76 East: 3108954.57 (U.S. survey feet)

North: 1745549.47 East: 3108878.67 (U.S. survey feet)

Type and depth of monument

Corner 1: Harrison 4" disk 'Section Corner', flush with adjacent ground

Corner 2: 5/8" rebar with metal cap 'Boone County Surveyor' 14 inches deep

Indiana tie card references:

IN02\_T19NR1W33\_80 IN02\_T19NR1W34\_72

IN02\_T18NR1W04\_08 IN02\_T18NR1W03\_00

### CORNER WITNESS DETAIL

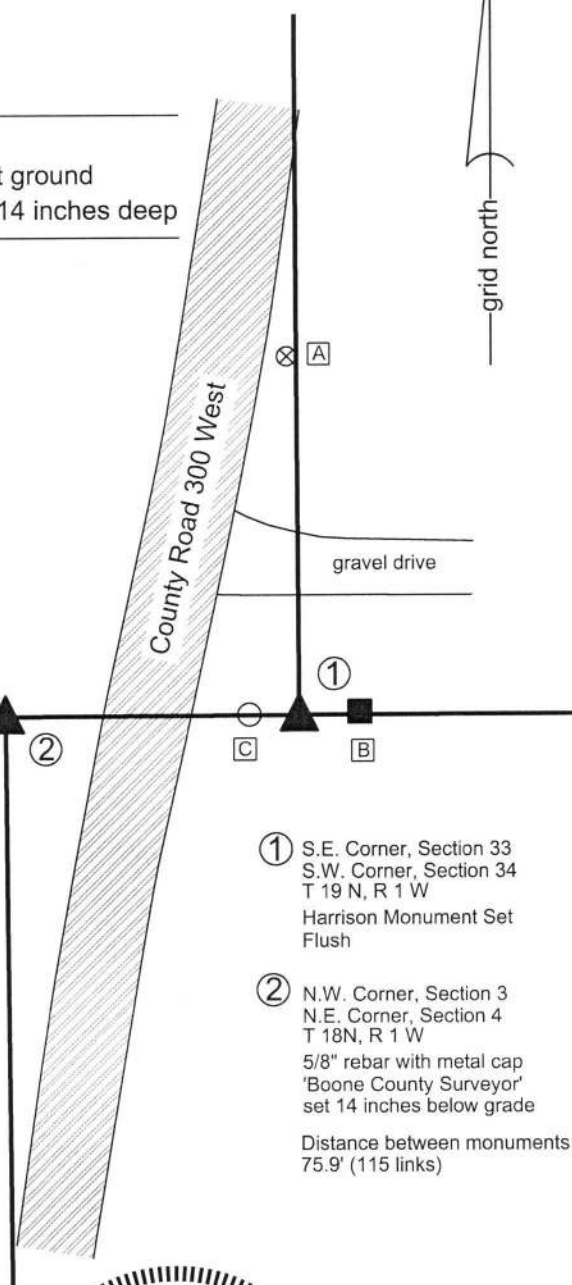
SCALE 1" = 50'

A - Boone County witness mark, flush,  
93.0' to Corner 1, 118.4' to Corner 2

B - Mag nail set in W. side power pole, 1' a.g.,  
13.1' to Corner 1, 89.0' to Corner 2

C - East edge plastic underground cable marker, flush,  
13.0' to Corner 1, 62.9' to Corner 2

Boone County witness mark is a 3/8" diameter x 2' long rebar bearing a metal cap stamped "Boone County Witness Point."



The Harrison monument at Corner 1 was set over a vertical section of railroad rail found. This corner was monumented in 2016 and shown on a record of March 23, 2017. The position of Corner 2 was established at 115 links (75.9 feet) from Corner 1 along a line between the southeast and southwest corners of section 33. (See BCS Corner NW 000-400 as well as NW 000-350).

A BCS record of March 17, 1894 states, with respect to Corner 1, "Reestablished. Set Rock + 14.14.5 + at corner. Set Rock + 3.9.7 underneath. Brick bat + underneath. Old ax under all. All packed with brick bats, small rocks, an old ax and pieces of iron & crockery." No specific descriptions of Corner 2 were found in the entries of the BCS Surveyor's Record. A BCS tie card dated September 30 and October 4, 1971 shows Corner 1 as "Stone Found - 9/30/71- RRR Put in" and shows Corner 2 as "No Stone - RRR put in - 10/4/71." This tie card shows the corners 66.7 feet apart, 9.2 feet less than the original record offset. Another tie card, dated June 27, 1994, shows Corner 1 as a railroad rail found.

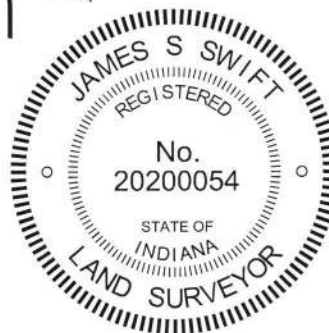
The railroad rail at Corner 1 was found in 2016. The rail was accepted as marking the corner, presuming the stone found in 1971 was one of the monuments described in the 1894 record. The top of the rail was five inches below grade, as found. The rail was left in place with two 24" lengths of 3/8 inch diameter rebar driven at angles adjacent to the rail. The top 8 inches of the rail and the tops of both rebars were encased in concrete and a Harrison monument was set over the top, center of the rail. A survey by Jerry L. Carter, IN LS #S0350 recorded as Instrument 0107644 in the Office of the Boone County Recorder shows Corner 2 at 75.9 feet west of Corner 1, in agreement with the original federal notes which state that Corner 2 is 115 links west of Corner 1. The descriptions of the adjoining land match the survey (see I200900008570). This position falls in a tilled field but fits well with the center of County Road 300 West to the south. A 2 foot length of 5/8 inch rebar was found bent and severely disturbed in the immediate vicinity of Corner 2. The railroad rail (RRR) called in the 1971 tie card was not found at Corner 2 and is believed to have not been present since at least 1989. It is not known why the 1971 tie card established the corners at 66.7 feet apart. No evidence was found to support this position nor were any surveys or deeds found which explicitly hold the position. The federal dimension of 115 links was held, in agreement with the Carter survey and adjoining descriptions. The bent rebar was removed and replaced with a 30 inch length of 5/8 inch diameter rebar with metal cap stamped 'Boone County Surveyor' set at 14 inches below the top of the tilled field on May 31, 2019.

Corner 1 was originally established as a wood post in 1819. Corner 2 was originally established as a wood post in 1820.

① S.E. Corner, Section 33  
S.W. Corner, Section 34  
T 19 N, R 1 W  
Harrison Monument Set  
Flush

② N.W. Corner, Section 3  
N.E. Corner, Section 4  
T 18N, R 1 W  
5/8" rebar with metal cap  
'Boone County Surveyor'  
set 14 inches below grade

Distance between monuments:  
75.9' (115 links)



Center Township

Section 33 T19N, R1W	Section 34 T19N, R1W
Section 4 T18N, R1W	Section 3 T18N, R1W

Kenneth E. Hedge, County Surveyor  
June 19, 2019

James S. Swift, IN LS 20200054

# SECTION CORNER RECORD

NW 000-350

## BOONE COUNTY SURVEYOR'S OFFICE

State Plane grid coordinates NAD83 (2011):

Corner 1: North: 1745539.62 East: 3106305.36 (U.S. survey feet)

Corner 2: North: 1745539.36 East: 3106238.04 (U.S. survey feet)

Type of monuments: Harrison, 4" disk 'Section Corner'

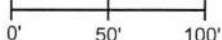
Depth: Flush with adjacent ground

Indiana tie card references:

IN02\_T19NR1W33\_76 IN02\_T18NR1W04\_04

### CORNER WITNESS DETAIL

SCALE 1" = 100'



① South Quarter Corner  
Section 33, T 19 N, R 1 W

② North Quarter Corner  
Section 4, T 18 N, R 1 W

Distance between monuments:  
102 links (67.32')

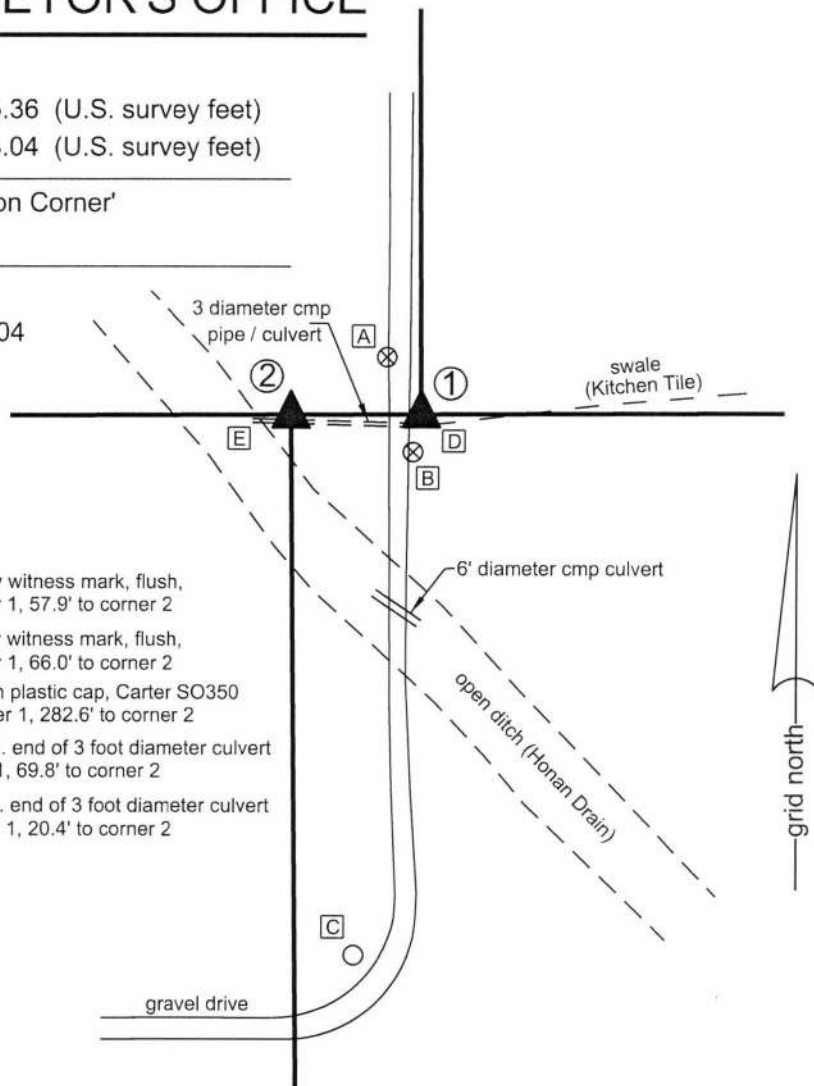
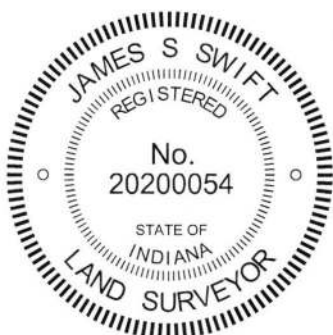
A - Boone County witness mark, flush,  
34.5' to corner 1, 57.9' to corner 2

B - Boone County witness mark, flush,  
15.4' to corner 1, 66.0' to corner 2

C - 5/8" rebar with plastic cap, Carter SO350  
283.0' to corner 1, 282.6' to corner 2

D - Top, center, E. end of 3 foot diameter culvert  
6.2' to corner 1, 69.8' to corner 2

E - Top, center W. end of 3 foot diameter culvert  
87.6' to corner 1, 20.4' to corner 2



The Harrison monuments were both set at calculated positions.

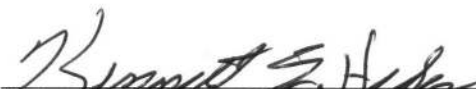
Corner 1 is an original corner of the public land survey system, set in 1819. No specific descriptions of Corner 1 were found beyond the original establishment of the corner as a wood post in 1819. The corner is shown as a terminal point for measurements in a BCS record of April 7 & 17, 1884. Corner 2 is not an original corner of the PLSS, but is described in a BCS record of November 9, 1873 which states "Point 102 links W. of cor. for Sec. 33." It is noted that 102 links represents the average of the closing offset distances reported in the original federal notes for the northeast and northwest corners of section 4.


Both corners are shown on surveys by Jerry L. Carter, IN LS # S0350, recorded in the Office of the Boone County Recorder as Instruments 01070644 and 200700004440, respectively. Although not specifically stated on the surveys, analysis of the dimensions and references to other corners shown on the two surveys demonstrates that the two surveys place Corner 1 at the midpoint of the lines connecting the southeast and southwest corners of section 33 and place Corner 2 at 67.32 feet (102 links) west of Corner 1. Numerous monuments shown on the surveys were recovered and found to fit well with the relative dimensions shown on the surveys but no monuments were found marking the subject corners. Nor was ancient evidence found in the vicinity of the corners, due to the presence of a large metal culvert / pipe associated with the Kitchen Legal Tile. The theoretical positions as shown on the Carter surveys were held and Harrison monuments were set at these positions. Corner 1 is intended to be at the midpoint of the line connecting the southeast and southwest corners of section 33. Corner 2 is intended to be on the same line, 102 links (67.32 feet) westerly of Corner 1. Harrison monuments were set at both positions on May 31, 2019. It is observed that Corner 2 is not at the midpoint of the line connecting the northeast and northwest corners of Section 4, as the northwest corner of section 4 is further from the southwest corner of section 33 than the original reported distance of 89 links (see BCS corner SW 000-400). The computed dimension of 102 links (67.32 feet) was held for separation of the subject corners per the 1873 BCS record and the Carter surveys.

Center  
Township

Section 33  
T19N, R1W

Section 4  
T18N, R1W

  
Kenneth E. Hedge, County Surveyor  
June 19, 2019

  
James S. Swift, IN LS 20200054

# SECTION CORNER RECORD

NW 000-400

## BOONE COUNTY SURVEYOR'S OFFICE

State Plane grid coordinates NAD83 (2011):

Corner 1: North: 1745529.48 East: 3103656.14 (U.S. survey feet)

Corner 2: North: 1745529.62 East: 3103594.31 (U.S. survey feet)

Type of monument: Harrison, 4" disk 'Section Corner'

Depth: Flush with adjoining ground (both corners)

Indiana tie card references:

IN02\_T19NR1W32\_80 IN02\_T19NR1W33\_72

IN02\_T18NR1W05\_08 IN02\_T18NR1W04\_00

### CORNER WITNESS DETAIL

SCALE 1" = 60'

- A - Boone County witness mark, flush, 54.5' to Corner 1, 52.5' to Corner 2
- B - Mag nail set in W. side power pole, 2' a.g., 78.1' to Corner 1, 16.3' to Corner 2
- C - Mag nail set in E. side wood post, 1' a.g., 57.4' to Corner 1, 45.3' to Corner 2

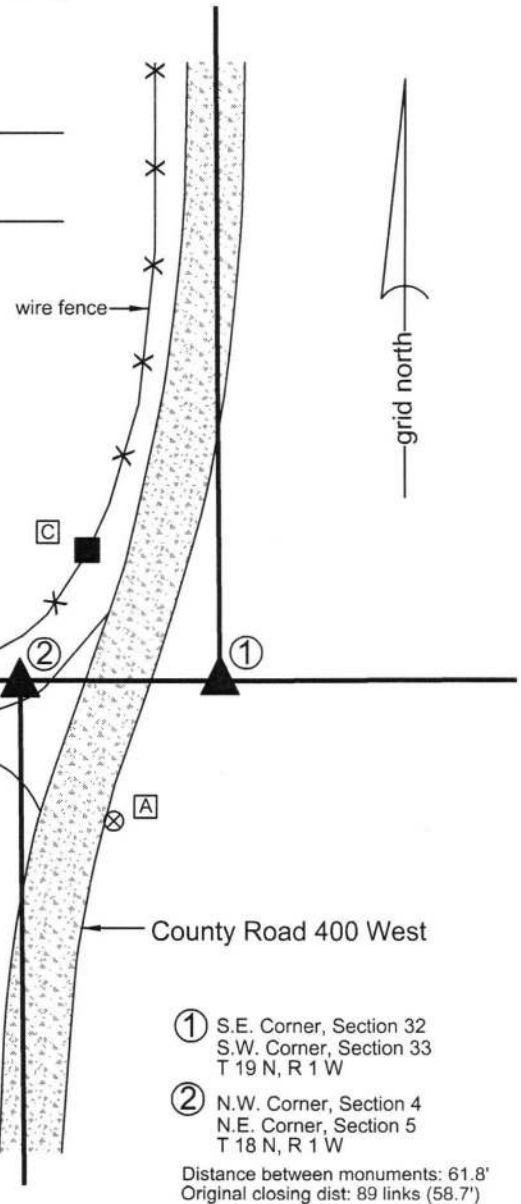
Boone County witness mark is a 3/8" diameter x 2' long rebar bearing a metal cap stamped "Boone County Witness Point."

The Harrison monument at Corner 1 was set over a vertical section of railroad rail found. The Harrison monument at Corner 2 was set adjacent to a vertical section of railroad rail found.

A BCS record dated April 7 & 17, 1884 states, with respect to Corner 1, "Reest'd Rock 16x12x6 +." A BCS record dated April 3, 1870 states, with respect to Corner 2, "Rock at Corner. Fnd from stump of Oak." A BCS tie card dated September 30 & October 4, 1971 shows Corner 1 as "Stone Found 9/30/71, RRR put in" and shows Corner 2 as "No stone, RRR put in 10/4/71." In Summer, 2016, vertical sections of railroad rail (RRR per the tie card) were found marking both corners. As Corner 1 is the dominant corner, being the standard corner, and as the documentation indicates that the stone was previously found and replaced with a railroad rail, the rail found at this corner was held as marking the corner. The top of the rail was 6 inches below grade, as found in 2016. The rail was left in place and on August 11, 2016 a Harrison monument was broken off at 4 inches, two rebars, 3/8 inch diameter by 24 inches long were driven at angles on the east and west sides of the rail. The top 7 inches of the rail were encased in concrete along with the tops of the 3/8 inch rebars and the shortened Harrison monument was set directly over the top, center of the rail.

The rail at Corner 1 was found to be slightly north of the township line connecting Corner 1 with the standard corner approximately one-half mile to the west (see corner NW 000-450). The rail was also approximately 3 feet further from Corner 1 than the original closing distance specified in the federal survey notes. Extensive probing performed in the immediate vicinity of the corner yielded no further evidence of the corner. The position of the rail was held in the east-west dimension. The corner was established on the township line and on October 21, 2016 a Harrison monument was set at this position, 0.8 foot south of the rail, which was left in place and partially encased in concrete.

Corner 1 was originally established as a wood post in 1819. Corner 2 was originally established as a wood post in 1820.



- ① S.E. Corner, Section 32  
S.W. Corner, Section 33  
T 19 N, R 1 W
- ② N.W. Corner, Section 4  
N.E. Corner, Section 5  
T 18 N, R 1 W

Distance between monuments: 61.8'  
Original closing dist: 89 links (58.7')

Marion Township

Section 32 T19N, R1W	Section 33 T19N, R1W
Section 5 T18N, R1W	Section 4 T18N, R1W



*Kenneth E. Hedge*  
Kenneth E. Hedge, County Surveyor

*James S. Swift*  
James S. Swift, IN LS 20200054  
March 23, 2017

# SECTION CORNER RECORD

NW 050-300

## BOONE COUNTY SURVEYOR'S OFFICE

State Plane grid coordinates NAD83 (2011):

North: 1748182.99 East: 3108940.44 (U.S. survey feet)

Type of monument: Harrison, 4" disk 'Section Corner'

Depth: Six inches above adjacent ground

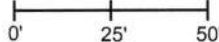
Indiana tie card references:

IN02\_T19R1W33\_44 IN02\_T19NR1W44\_36

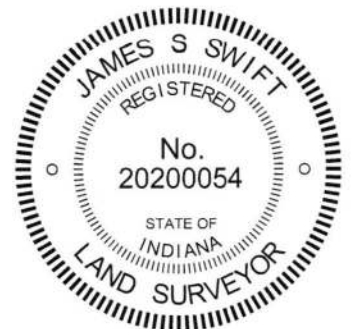
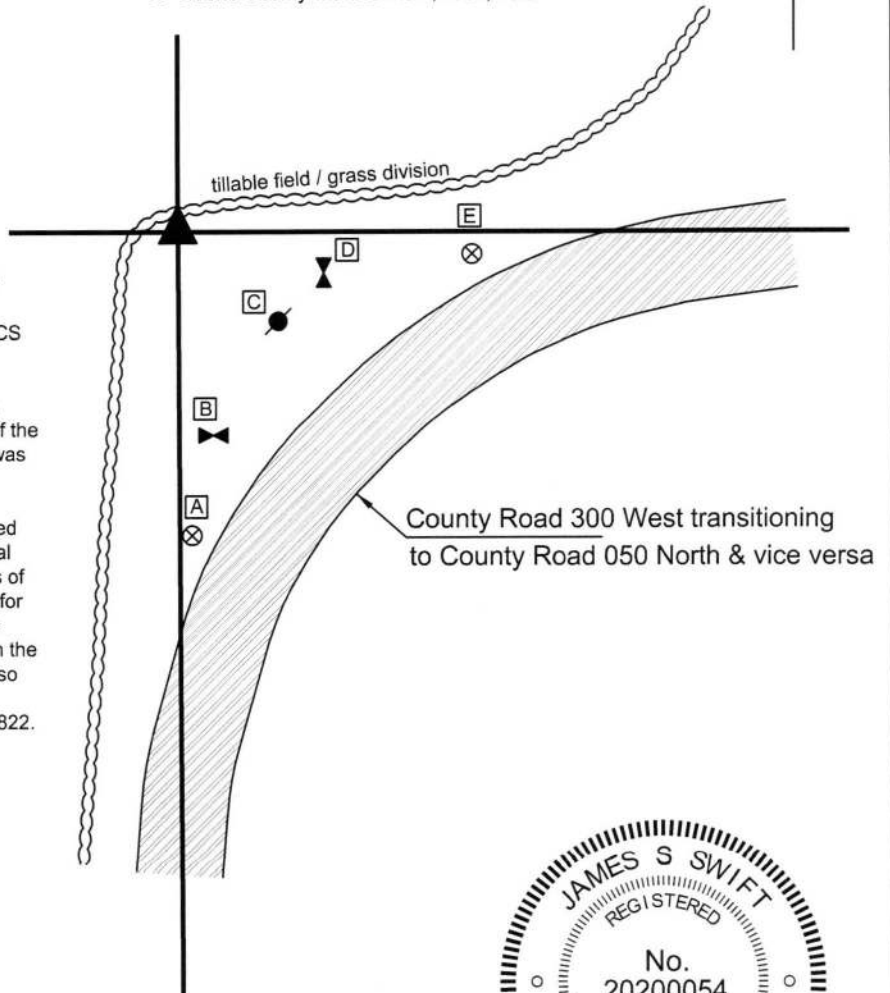
- A - Boone County witness mark, flush, 78.9'
- B - West edge, road sign (arrow pointing East), flush, 53.2'
- C - Mag nail set in N. side power pole, 1' a.g., 33.0'
- D - North edge, road sign (arrow pointing South), flush, 38.2'
- E - Boone County witness mark, flush, 76.5'

### CORNER WITNESS DETAIL

SCALE 1" = 50'



The Harrison monument was set over a vertical section of railroad rail found.  
 No specific descriptions of this corner were found in the BCS Surveyor's Record. A BCS tie card dated August 7, 1968 states "Stone Located" with respect to the corner.  
 A section of railroad rail which has long been accepted as marking this corner is believed to have been set in place of the stone as part of the creation of the 1968 record. The rail was accepted as marking the corner. On August 21, 2016, a Harrison monument was set over the rail. After minor excavation around the top of the rail, the rail was hammered into the ground approximately 8 inches, a section of vertical plastic storm pipe was set around the rail and two sections of 5/8 inch rebar were driven along the north edge of the rail for stability. The top 8 inches of the rail and both rebars were anchored in concrete and a Harrison monument was set in the position of the top, center of the rail, as originally found, also anchored in concrete.  
 This corner was originally established as a wood post in 1822.

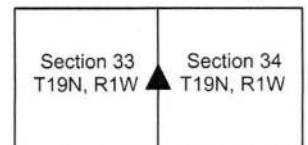


*James S. Swift*  
 James S. Swift, IN LS 20200054

*Kenneth E. Hedge*  
 Kenneth E. Hedge, County Surveyor

March 23, 2017

Center Township





# SECTION CORNER RECORD

## BOONE COUNTY SURVEYOR'S OFFICE

NW 050-400

State Plane grid coordinates NAD83 (2011):  
 North: 1748173.16 East: 3103639.84 (U.S. survey feet)

Type of monument: Harrison, 4" disk 'Section Corner'  
 Depth: Six inches below adjacent gravel road surface

Indiana tie card references:  
 IN02\_T19NR1W32\_44 IN02\_T19NR1W33\_36

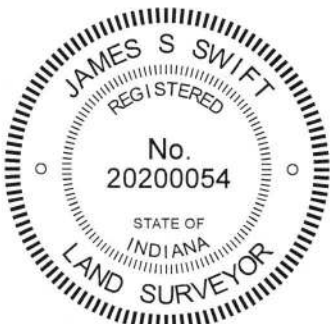
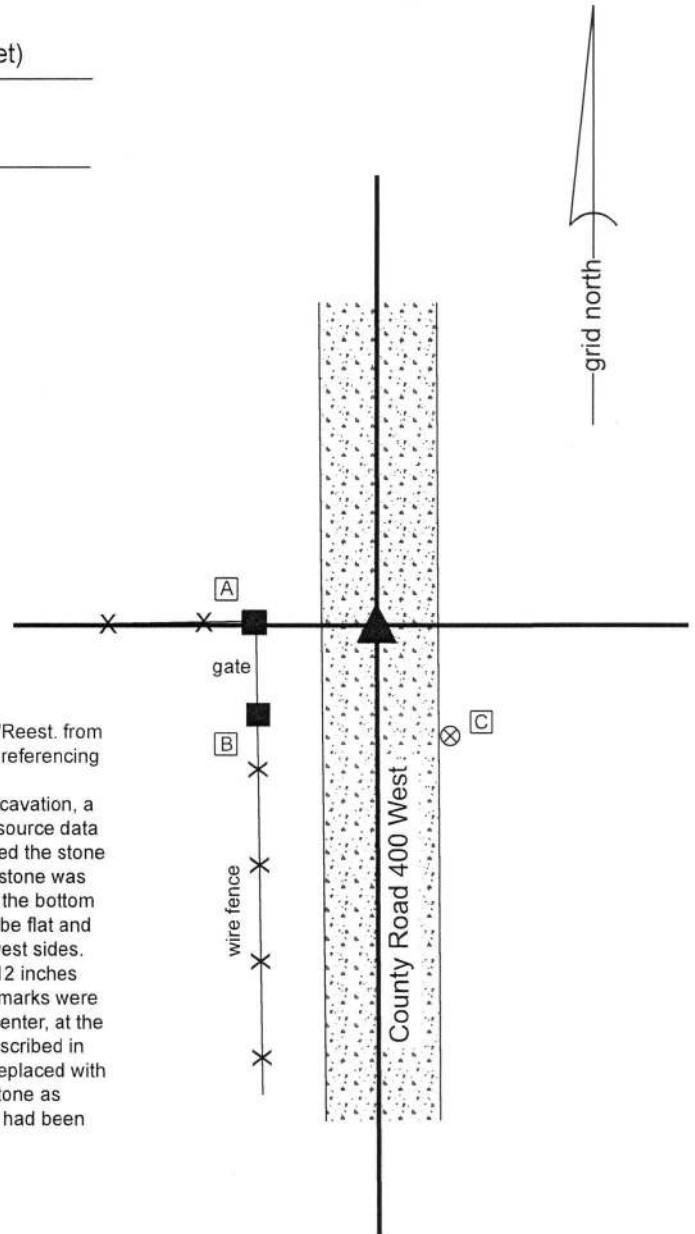
### CORNER WITNESS DETAIL

SCALE 1" = 30'

- A - Mag Nail set in E. side wood corner post, 2' a.g., 18.8'
- B - Mag Nail set in N.E. side wood gate post, 2' a.g., 23.1'
- C - Boone County witness mark, flush, 20.7'

Boone County witness mark is a 3/8" diameter x 2' long rebar bearing a metal cap stamped "Boone County Witness Point."

The Harrison Monument was set in place of a stone found. A BCS record of April 7 & 17, 1884 states, with respect to this corner, "Reest. from Beech. Rock 14x12x10 mark +." No recent BCS tie cards were found referencing this corner. Excavation was performed at this corner on June 28, 2018. Prior to excavation, a vertical section of railroad rail was found at 2 inches below grade. No source data was found referencing the establishment of the rail. Excavation revealed the stone described in the 1884 record at 9 inches deep in the gravel road. The stone was embedded in the clay layer below the road, with the top of the stone at the bottom of the road bed. The north and south sides of the stone were found to be flat and vertical while the stone had a rounded character across the east and west sides. The stone was removed, measured, and found to be 14 inches tall by 12 inches E-W by 10 inches N-S, exactly matching the 1884 record. No specific marks were detected on the stone. The highest point of the stone was at the top, center, at the north edge. The stone was accepted as being the same monument described in the 1884 record and was held as marking the corner. The stone was replaced with a Harrison monument in the same position of the highest point of the stone as found. The vertical section of railroad rail, removed during excavation, had been 1.8 feet north and 0.7 foot west of the high point of the stone. This corner was originally established as a wood post in 1822.



*Kenneth E. Hedge*  
 Kenneth E. Hedge, County Surveyor

*James S. Swift*  
 James S. Swift, IN LS 20200054  
 July 25, 2018

