

# SECTION CORNER RECORD

## BOONE COUNTY SURVEYOR'S OFFICE

NE 100-200

State Plane grid coordinates NAD83 (CORS96):  
 North: 1750931.27 East: 3135138.96 (U.S. survey feet)

Type of monument: Harrison, 4" disk 'Section Corner'  
 Depth: six inches below adjacent gravel road surface

Indiana tie card references:  
 IN02\_T19NR1E29\_80 IN02\_T19NR1E28\_72  
 IN02\_T19NR1E32\_08 IN02\_T19NR1E33\_00

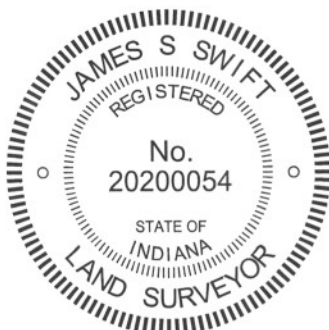
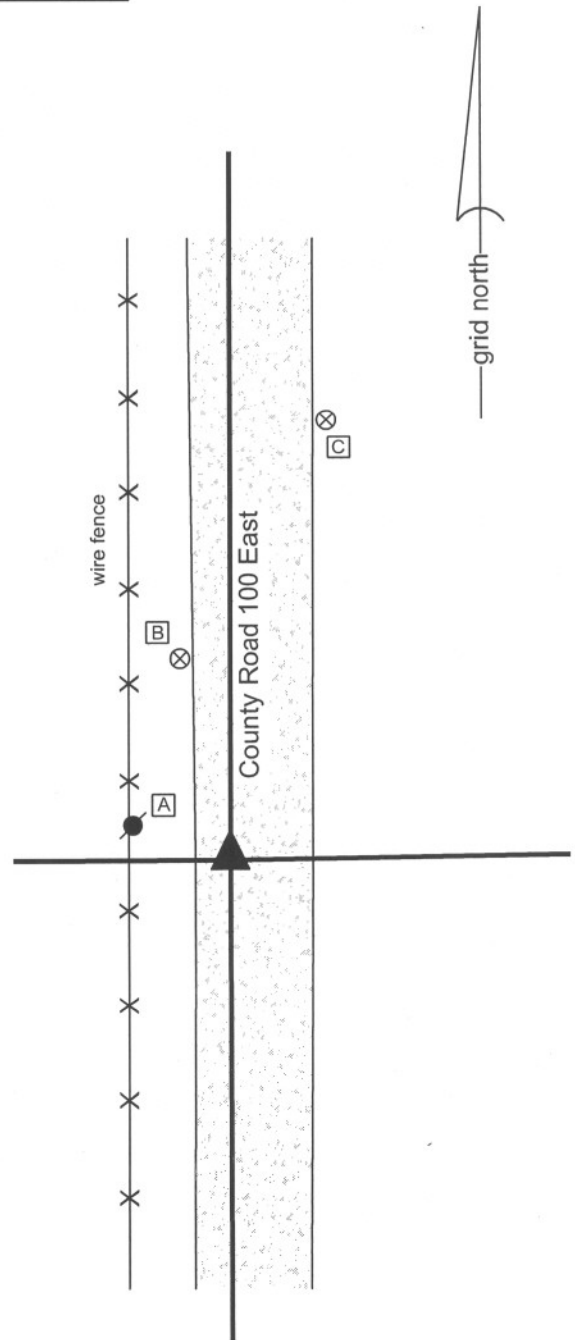
### CORNER WITNESS DETAIL

SCALE 1" = 30'

- A - Mag nail set in W. side power pole, 2' a.g., 14.60'
- B - Boone County witness mark, flush, 32.15'
- C - Boone County witness mark, flush, 70.40'

Boone County witness mark is a 3/8" diameter x 2' long rebar bearing a metal cap stamped "Boone County Witness Point."

The harrison monument was set in place of a stone found and directly over a vertical section of clay tile found.  
 A BCS Record dated April 1, 1893 states "Found from Walnut Stump, Red Oak (about 3 links further than call). Set rock mark + 22.10.10 at corner. 4 inch tile filled with sand and gravel under." A BCS tie card dated August 1, 2005 shows the corner as a harrison monument with no documentation of source.  
 This corner was excavated on June 20, 2012. Prior to excavation a harrison monument was found at 1-1/2 inches below grade, the position of which agrees with the 2005 distance ties. Excavation revealed the record stone found at 2 inches below grade. The stone is leaning slightly WNW. As stood up top of the stone was at the surface of the gravel road. The top of the stone measures 8 inches N-S by 8 inches E-W. The stone was well embedded in the clay layer below the road bed, protruding approximately 6 inches out of the clay, which depth represents the entire thickness of the existing road bed. The stone was removed and found to measure 10 inches by 10 inches by 20 inches tall, in agreement with the 1893 record. No specific marking were detected on the stone. Directly below the stone, the top of a vertical piece of 4 inch diameter clay tile was found, also in agreement with the 1893 record. The tile was left in place and a harrison monument was set over it, in place of the stone.  
 The harrison monument documented on the 2005 tie card was removed during excavation. This monument had been 1.4 feet east and 3.1 feet north of the stone and clay tile.  
 This corner was originally established as a wood post in June, 1822.



*Kenneth E. Hedge*  
 Kenneth E. Hedge, County Surveyor

*James S. Swift*  
 James S. Swift, IN LS 20200054  
 January 15, 2013

Center Township

Section 29 T19N, R1E	Section 28 T19N, R1E
Section 32 T19N, R1E	Section 33 T19N, R1E

PHOTOGRAPHIC DOCUMENTATION

Date of photography: June 20, 2012

The stone as originally found leaning.  
View from the east.



The stone stood up.  
View from the east.



The stone stood up.  
View from the north.



Top of the piece of tile from above.



For details and documentation, refer to related sheet "Section Corner Record."

# SECTION CORNER RECORD

NE 100-250

## BOONE COUNTY SURVEYOR'S OFFICE

State Plane grid coordinates NAD83 (2011):

North: 1750967.04 East: 3137789.54 (U.S. survey feet)

Type of monument: Harrison, 4" disk 'Section Corner'

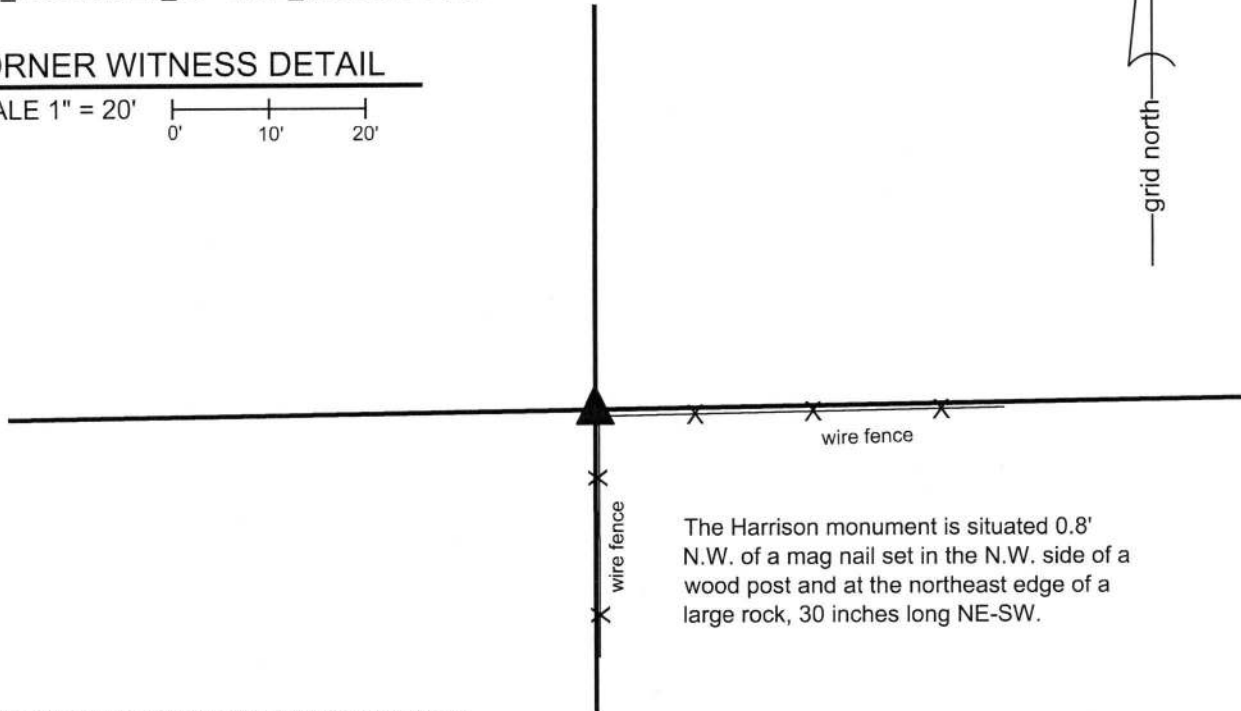
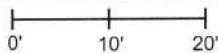
Depth: Two inches above adjacent ground

Indiana tie card references:

IN02\_T19NR1E28\_76 IN02\_T19NR1E33\_04

### CORNER WITNESS DETAIL

SCALE 1" = 20'



The Harrison monument is situated 0.8' N.W. of a mag nail set in the N.W. side of a wood post and at the northeast edge of a large rock, 30 inches long NE-SW.

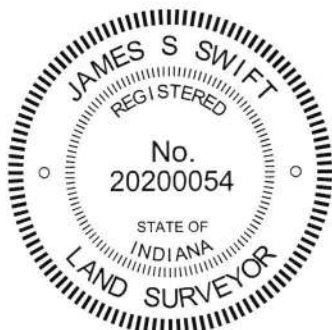
The Harrison monument was set in place of a rebar found.

A BCS record of April 1, 1893 states, with respect to this corner, "Rock here claimed by some as being the correct corner and doubted by others but after running the line from North as found from bearing trees at both corners concluded that it is the same from which the subdivision was made and recognize it as the original corner."

A BCS tie card dated January 18, 1994 shows the corner as a rebar with cap at the northwest edge of a corner post.

This corner was monumented on November 1, 2017. The rebar shown on the 1994 corner was found at the northwest edge of a post, as shown on the tie card, bearing a yellow plastic cap stamped 'Dodge SO288.' The corner post is not ancient and is leaning substantially towards the southeast. Many rocks were found around and in the immediate vicinity of the corner post. The 1893 record is not specific about the dimensions of the rock accepted at that time as being the corner. Given the substantial amount of rocks found at the corner, it is not possible to determine which of those rocks might represent the corner as held in 1893. It is noted that the measurements included with the 1893 record show unequal distances to the section corners to the east and west. Applying the standard scale factor of 1.00415 (used throughout the county for measurements reported between 1860 and 1895) to the 1893 measurements, the distance to the section corner to the east nearly exactly matches the 1893 record and the distance to the section corner to the west is 2 feet short of the 1893 distance. Hence, uncertainties of approximately 2 feet east-west are associated with the position of the found rebar and the 1893 record. This is considered a minimal uncertainty with respect to such an old record and the near match of the respective, imbalanced distances is considered confirmation that the position of the rebar closely matches the position of the corner as determined in 1893. As noted, however, the rock described in the 1893 record was not identified. The rebar was held as marking the corner. The rebar was removed and replaced with a Harrison monument in the same position.

This corner was originally established as a wood post in 1821.



*Kenneth E. Hedge*  
Kenneth E. Hedge, County Surveyor

*James S. Swift*  
James S. Swift, IN LS 20200054  
November 21, 2017

Center Twp

Section 28  
T19N, R1E

Section 33  
T19N, R1E

# SECTION CORNER RECORD

# NE 100-300

## BOONE COUNTY SURVEYOR'S OFFICE

State Plane grid coordinates NAD83 (CORS96):

North: 1751007.27 East: 3140451.53 (U.S. survey feet)

Type of monument: Harrison, 4" disk 'Section Corner'

Depth: One inch below adjacent road surface

Indiana tie card references:

IN02\_T19NR1E27\_72

IN02\_T19NR1E28\_80

IN02\_T19NR1E33\_08

IN02\_T19NR1E34\_00

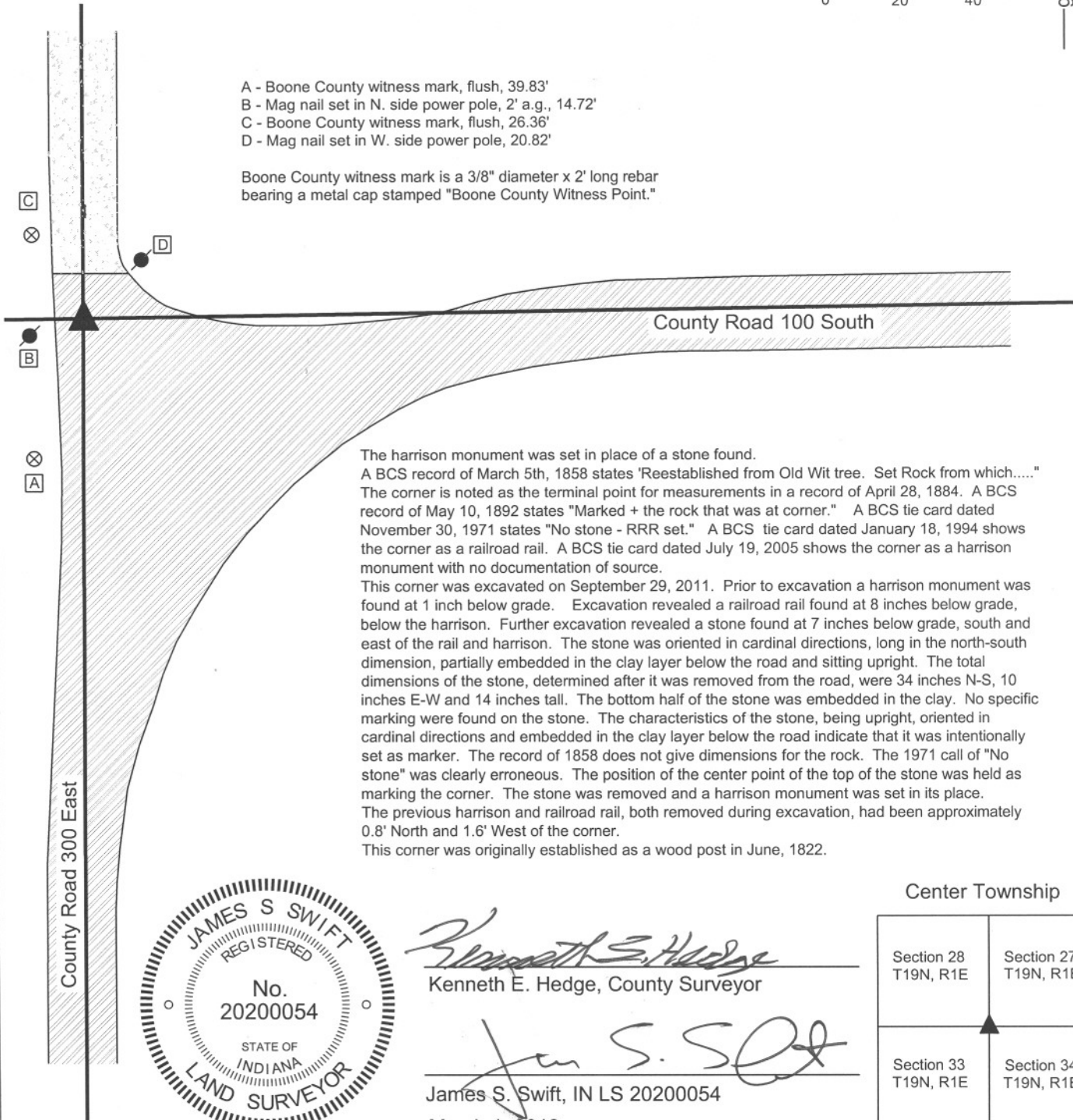
### CORNER WITNESS DETAIL

SCALE 1" = 40'



- A - Boone County witness mark, flush, 39.83'
- B - Mag nail set in N. side power pole, 2' a.g., 14.72'
- C - Boone County witness mark, flush, 26.36'
- D - Mag nail set in W. side power pole, 20.82'

Boone County witness mark is a 3/8" diameter x 2' long rebar bearing a metal cap stamped "Boone County Witness Point."



The harrison monument was set in place of a stone found.

A BCS record of March 5th, 1858 states "Reestablished from Old Wit tree. Set Rock from which....." The corner is noted as the terminal point for measurements in a record of April 28, 1884. A BCS record of May 10, 1892 states "Marked + the rock that was at corner." A BCS tie card dated November 30, 1971 states "No stone - RRR set." A BCS tie card dated January 18, 1994 shows the corner as a railroad rail. A BCS tie card dated July 19, 2005 shows the corner as a harrison monument with no documentation of source.

This corner was excavated on September 29, 2011. Prior to excavation a harrison monument was found at 1 inch below grade. Excavation revealed a railroad rail found at 8 inches below grade, below the harrison. Further excavation revealed a stone found at 7 inches below grade, south and east of the rail and harrison. The stone was oriented in cardinal directions, long in the north-south dimension, partially embedded in the clay layer below the road and sitting upright. The total dimensions of the stone, determined after it was removed from the road, were 34 inches N-S, 10 inches E-W and 14 inches tall. The bottom half of the stone was embedded in the clay. No specific marking were found on the stone. The characteristics of the stone, being upright, oriented in cardinal directions and embedded in the clay layer below the road indicate that it was intentionally set as marker. The record of 1858 does not give dimensions for the rock. The 1971 call of "No stone" was clearly erroneous. The position of the center point of the top of the stone was held as marking the corner. The stone was removed and a harrison monument was set in its place. The previous harrison and railroad rail, both removed during excavation, had been approximately 0.8' North and 1.6' West of the corner.

This corner was originally established as a wood post in June, 1822.



*Kenneth E. Hedge*  
 Kenneth E. Hedge, County Surveyor

*James S. Swift*  
 James S. Swift, IN LS 20200054  
 March 1, 2012

### Center Township

Section 28 T19N, R1E	Section 27 T19N, R1E
Section 33 T19N, R1E	Section 34 T19N, R1E

PHOTOGRAPHIC DOCUMENTATION

Date of photography: September 29, 2011

View of the stone as first exposed.



View of the stone with more exposed.



View of the stone from the west, looking down county Road 100 North from the intersection.



For details and documentation, refer to related sheet "Section Corner Record."