

# SECTION CORNER RECORD

SE 500-800

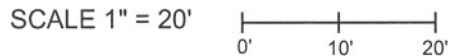
## BOONE COUNTY SURVEYOR'S OFFICE

State Plane grid coordinates NAD83 (NSRS 2007):  
 North: 1720188.49 East: 3167398.38 (U.S. survey feet)

Type of monument: Harrison, 4" disk 'Section Corner'  
 Depth: 0.1' below adjacent road surface

Indiana tie card references:  
 IN02\_T18NR2E28\_72      IN02\_T18NR2E29\_80  
 IN02\_T18NR2E32\_08      IN02\_T18NR2E33\_00

### CORNER WITNESS DETAIL

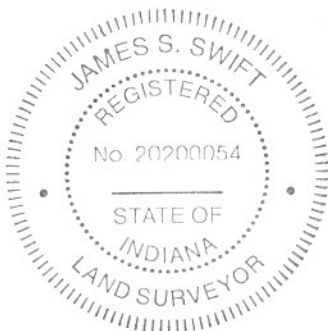
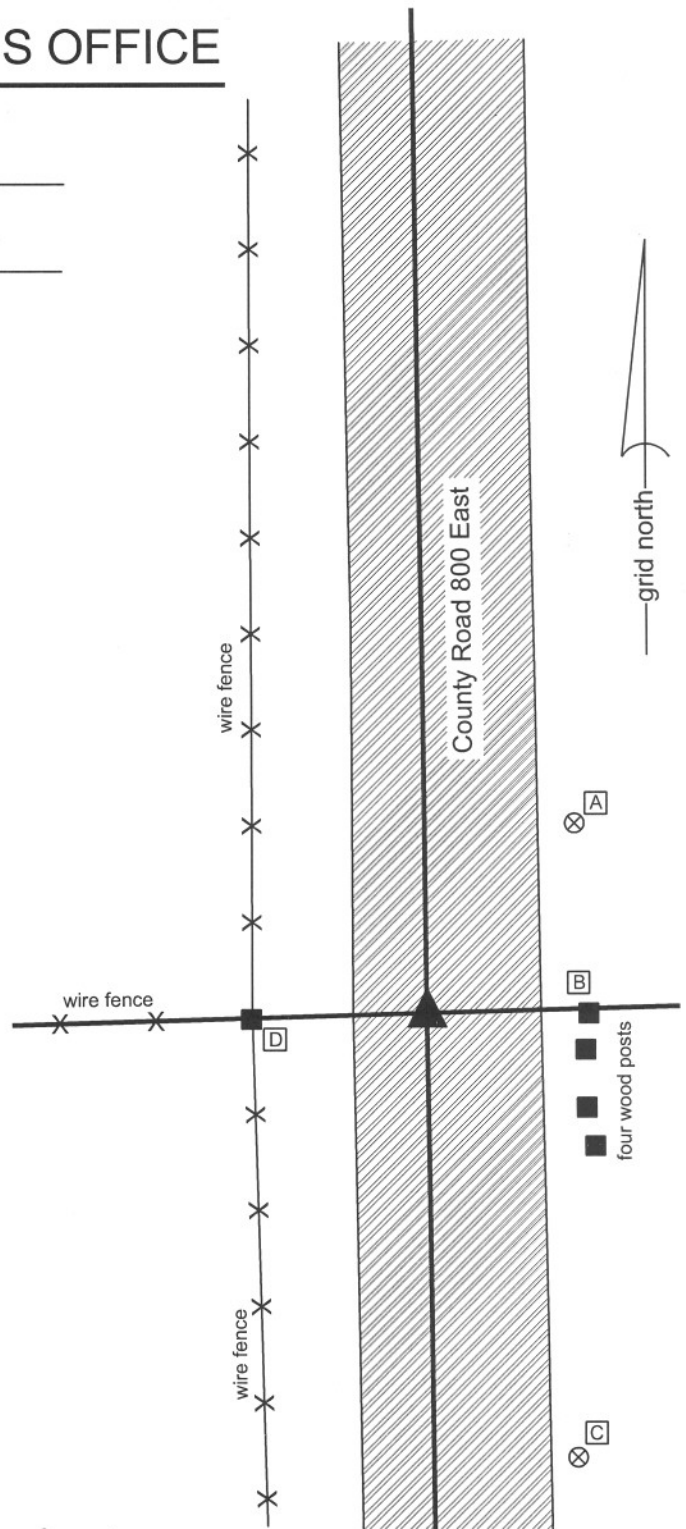


- A - Boone County witness mark, flush, 25.02'
- B - Mag nail found in N. side post, 0.5' a.g., 17.00'
- C - Boone County witness mark, flush 48.85'
- D - Mag nail found in S.E. side post, 1.3' a.g., 18.09'

Boone County witness mark is a 3/8" diameter x 2' long rebar bearing a metal cap stamped "Boone County Witness Point."

The Harrison monument was set in place of a stone found and accepted as marking the corner. The stone was slightly west of the center of the physical roadway of County Road 800 East, though close to the midpoint between the end posts on each side of the road. The position of the stone also fits well, in the east-west dimension, with the extended physical center of the roadway to the south and is at the easterly prlongation of an old fence to the west. The stone is 11 inches by 6 inches at its widest point and 12 inches tall. The stone was found to be standing vertically, fully lodged in the clay sub-base of the road, with the top of the stone at 5 inches below the existing surface of the road. No previous record of this stone is on file with this office.

A previous BCS tie card, undated though likely from 1968, states "no stone found." A piece of railroad rail found 1.8' E and 0.3' N of the top center of the stone was likely set as part of the field work associated with the creation of that tie card. The rail is closer to the physical center of the roadway than the stone, but does not fit as well with other evidence, including the extended physical roadway or the posts on each side. The stone is considered to be better evidence of the location of the original corner than the rail. The rail may represent a previous interpretation of the corner by the Office of the County Surveyor, though it is not specifically documented as such, and has been held by previous surveys as marking the corner. The 1967 tie card is considered erroneous, given the fact that the exclusive documentation on the tie card states "no stone found" while clearly a stone was present. It is noted that this corner is on the slope of a short, steep hill, through which the road drifts slightly to the east of the longer roadway. It is believed that the 1967 crew probably looked exclusively in the physical center of the roadway at the easterly prolongation of the old fence and did not search beyond that specific point. The rail was removed during excavation. Due to its shallow depth, the stone was also removed and the Harrison monument was set in place of the stone.



*Kenneth E. Hedge*  
 Kenneth E. Hedge, County Surveyor

*J. S. Swift*  
 James S. Swift, IN LS 20200054  
 January 30, 2008

Eagle & Worth Townships

Section 29 T18N, R2E (Worth)	Section 28 T18N, R2E (Eagle)
Section 32 T18N, R2E (Eagle)	Section 33 T18N, R2E (Eagle)

PHOTOGRAPHIC DOCUMENTATION

Date of photography: 11/14/2007

View from east, looking west. The stone is exposed to bottom. Most of the stone was embedded in the clay sub-base layer below the gravel road. Main square hole is 4 feet by 4 feet centered on the railroad rail. Stone found at west edge of main hole. Note wood end post to west.



View from above and south of stone as exposed. The top of the stone is 5 inches below the surface of the road.



View from above and slightly south of west. Clay sub-base has been excavated from around the stone almost to the bottom of the stone.



View from above and west. Hole and indentation in the clay sub-base after the stone was removed. Harrison monument was set in the position of the midpoint of the top of the stone.



# SECTION CORNER RECORD

SE 500-850

## BOONE COUNTY SURVEYOR'S OFFICE

State Plane grid coordinates NAD83 (NSRS 2007):

North: 1720260.05 East: 3170090.69 (U.S. survey feet)

Type of monument: 5/8 inch rebar metal cap stamped "Boone County Surveyor"

Depth: 16 inches below adjoining ground (below plow depth)

Indiana tie card references:

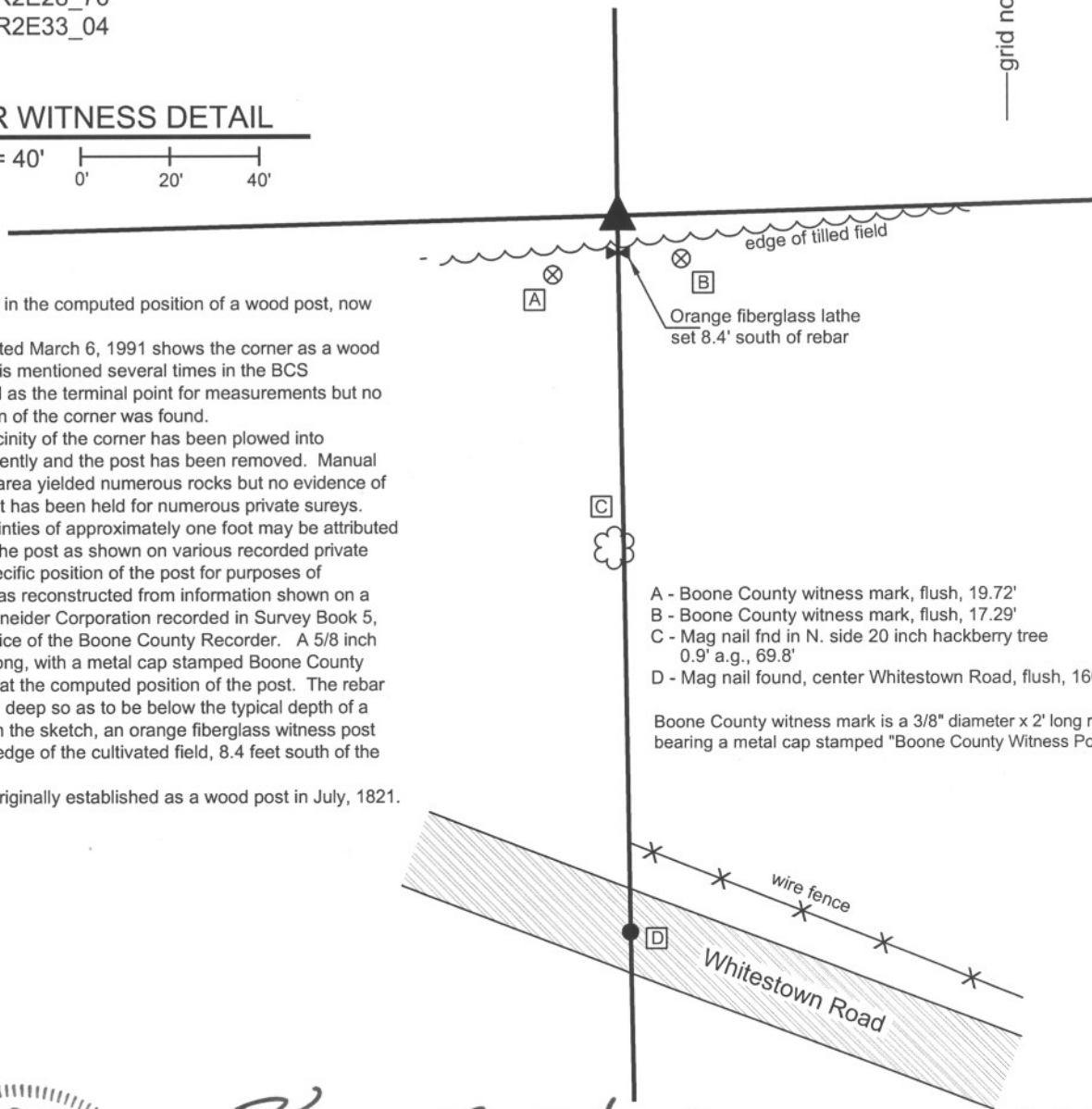
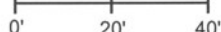
IN02\_T18NR2E28\_76

IN02\_T18NR2E33\_04



### CORNER WITNESS DETAIL

SCALE 1" = 40'



The rebar was set in the computed position of a wood post, now removed.

A BCS tie card dated March 6, 1991 shows the corner as a wood post. This corner is mentioned several times in the BCS Surveyor's Record as the terminal point for measurements but no specific description of the corner was found.

This immediate vicinity of the corner has been plowed into cultivated field recently and the post has been removed. Manual excavation in the area yielded numerous rocks but no evidence of the post. The post has been held for numerous private sureys. Positional uncertainties of approximately one foot may be attributed to the location of the post as shown on various recorded private surveys. The specific position of the post for purposes of monumentation was reconstructed from information shown on a survey by the Schneider Corporation recorded in Survey Book 5, page 70 in the Office of the Boone County Recorder. A 5/8 inch rebar, 36 inches long, with a metal cap stamped Boone County Surveyor was set at the computed position of the post. The rebar was set 16 inches deep so as to be below the typical depth of a plow. As noted on the sketch, an orange fiberglass witness post was set near the edge of the cultivated field, 8.4 feet south of the rebar.

This corner was originally established as a wood post in July, 1821.

- A - Boone County witness mark, flush, 19.72'
- B - Boone County witness mark, flush, 17.29'
- C - Mag nail fnd in N. side 20 inch hackberry tree 0.9' a.g., 69.8'
- D - Mag nail found, center Whitestown Road, flush, 160.95'

Boone County witness mark is a 3/8" diameter x 2' long rebar bearing a metal cap stamped "Boone County Witness Point."



*Kenneth E. Hedge*  
Kenneth E. Hedge, County Surveyor

*James S. Swift*  
James S. Swift, IN LS 20200054  
July 14, 2010

Eagle Twp

Section 28  
T18N, R2E

▲

Section 33  
T18N, R2E

# SECTION CORNER RECORD

SE 500-900

## BOONE COUNTY SURVEYOR'S OFFICE

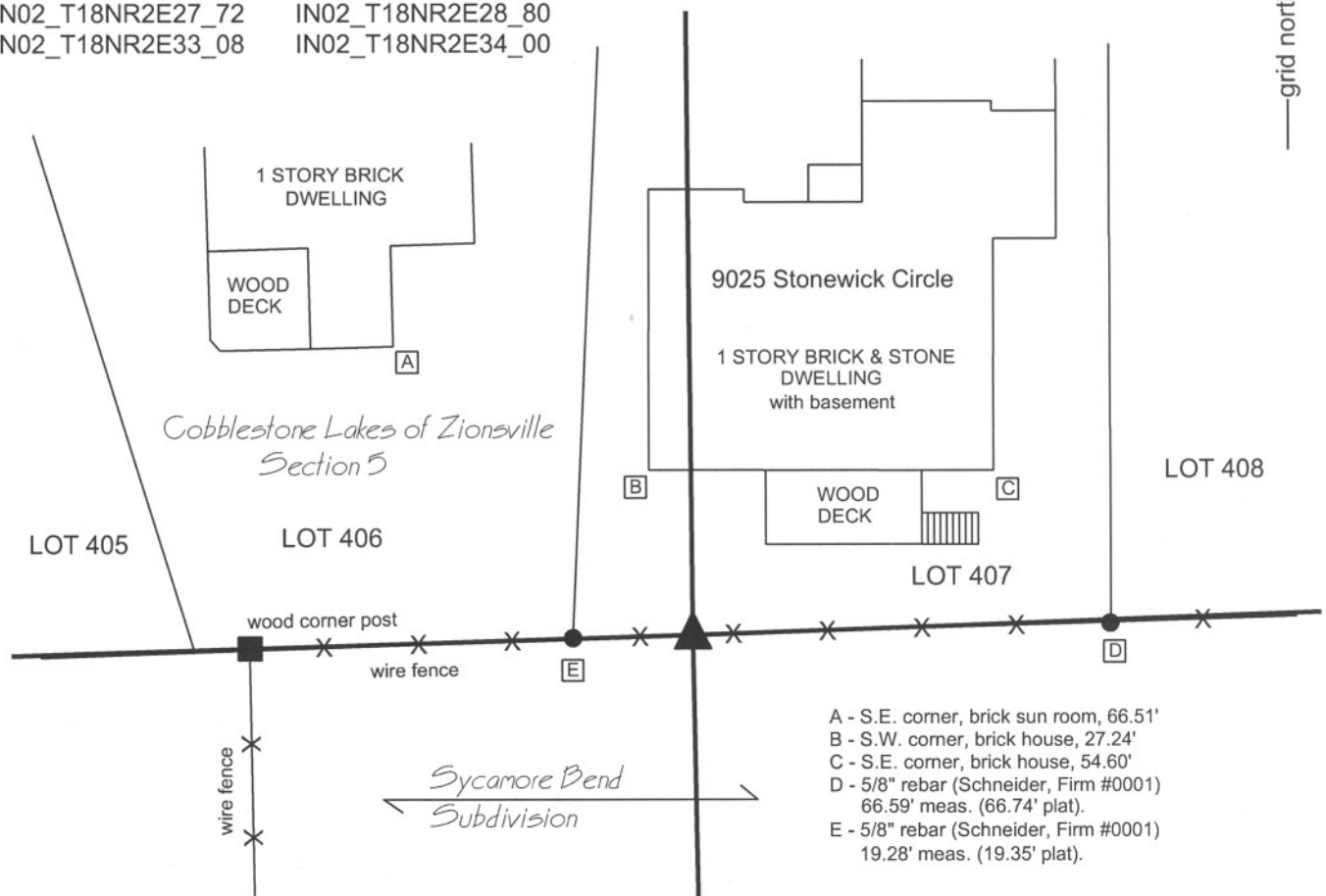
State Plane grid coordinates NAD83 (NSRS 2007):  
 North: 1720340.78 East: 3172780.70 (U.S. survey feet)

Type of monument: Harrison, 4" disk 'Section Corner'  
 Depth: flush with adjoining grade

Indiana tie card references:  
 IN02\_T18NR2E27\_72 IN02\_T18NR2E28\_80  
 IN02\_T18NR2E33\_08 IN02\_T18NR2E34\_00

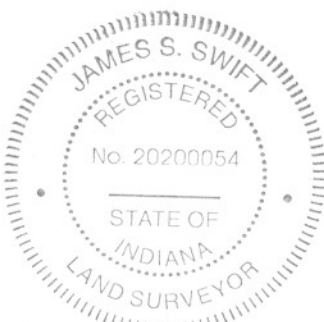
### CORNER WITNESS DETAIL

SCALE 1" = 30' 0' 15' 30'



- A - S.E. corner, brick sun room, 66.51'
- B - S.W. corner, brick house, 27.24'
- C - S.E. corner, brick house, 54.60'
- D - 5/8" rebar (Schneider, Firm #0001) 66.59' meas. (66.74' plat).
- E - 5/8" rebar (Schneider, Firm #0001) 19.28' meas. (19.35' plat).

The harrison monument was set in place of a 5/8 inch rebar found. No entries were found for this corner in the BCS stone record. A BCS tie card dated March 6, 1991 is ambiguous about the specific corner, but shows ties to a 5/8 inch rebar. This corner was excavated on September 19 and 23, 2008. Prior to excavation, an old wood post was visible with a 5/8 inch rebar 0.5 foot south. The old E-W fence was not attached to the post and the rebar was in the fence. Excavation revealed a column of rocks ranging from 4 inches by 4 inches to 12 inches by 12 inches approximately 1.5 feet east of the post. The rocks were removed and inspected. None contained specific markings and there was no evidence that these rocks had been purposely set as corner stones. Private surveys which have tied to this corner have held the rebar. The rebar is clearly shown as the corner on the plat of Cobblestone Lakes, Section 5, adjoining this corner to the north. The preponderance of evidence favors the rebar as the corner and it was held as such. The rebar was removed. The post was also removed except for the bottom portion, being from 2 feet deep to 4 feet deep. The harrison was set in concrete in the position of the rebar. This corner was originally established as a wood post in July, 1821.



*Kenneth E. Hedge*  
 Kenneth E. Hedge, County Surveyor

*James S. Swift*  
 James S. Swift, IN LS 20200054

March 11, 2009

Eagle Township

Section 28 T18N, R2E	Section 27 T18N, R2E
Section 33 T18N, R2E	Section 34 T18N, R2E

# SECTION CORNER RECORD

SE 550-800

## BOONE COUNTY SURVEYOR'S OFFICE

State Plane grid coordinates NAD83 (NSRS 2007):

North: 1717551.84 East: 3167430.83 (U.S. survey feet)

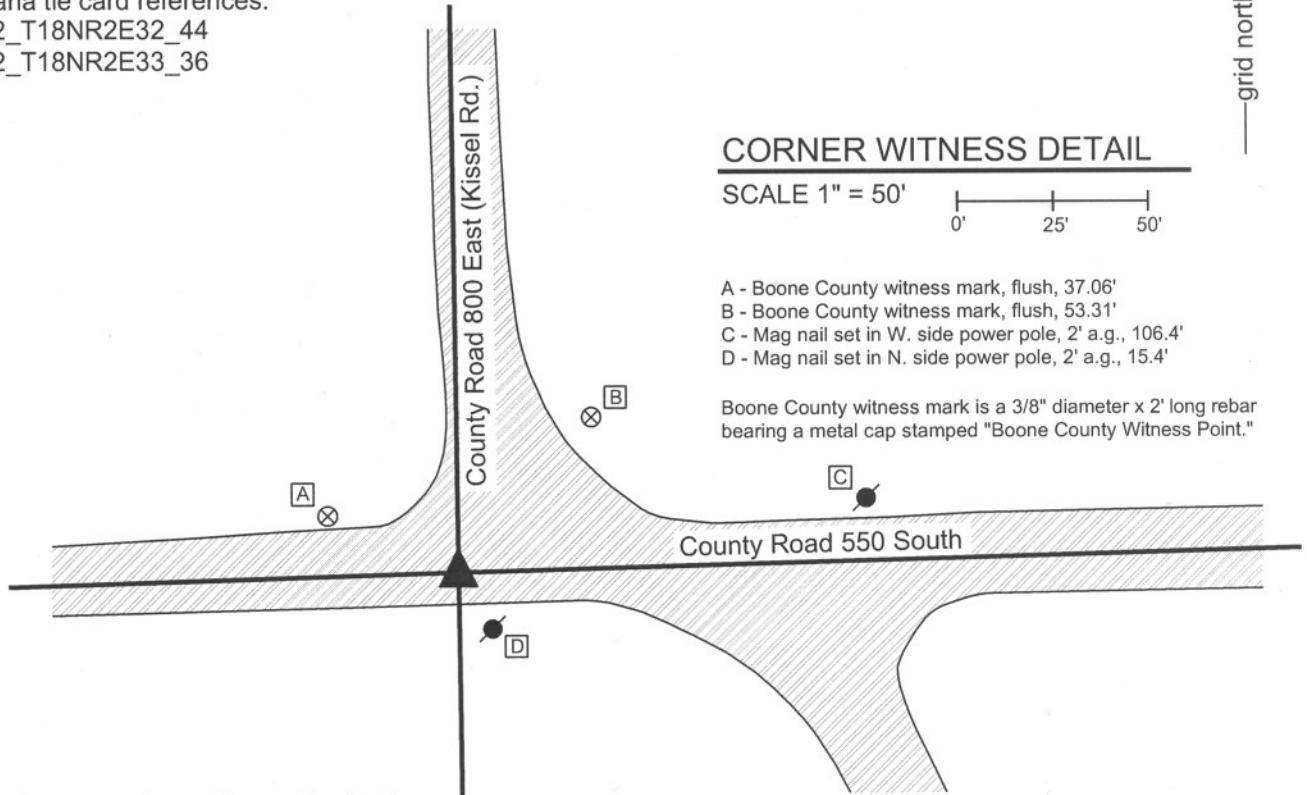
Type of monument: Harrison, 4" disk 'Section Corner'

Depth: One inch below adjacent road surface

Indiana tie card references:

IN02\_T18NR2E32\_44

IN02\_T18NR2E33\_36



### CORNER WITNESS DETAIL

SCALE 1" = 50'

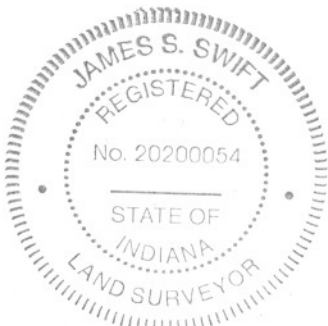


- A - Boone County witness mark, flush, 37.06'
- B - Boone County witness mark, flush, 53.31'
- C - Mag nail set in W. side power pole, 2' a.g., 106.4'
- D - Mag nail set in N. side power pole, 2' a.g., 15.4'

Boone County witness mark is a 3/8" diameter x 2' long rebar bearing a metal cap stamped "Boone County Witness Point."

The harrison monument was set over a stone found.

This corner is not specifically identified as being marked by a stone in the old BCS stone records. It is referenced on several measurement records within the stone record, including references from 1834, 1836 and 1903. No BCS tie cards were found for this corner. No monuments were visible at the surface or easily detected at this intersection prior to fall, 2008. Numerous small holes were visible in the intersection which appear to be previous efforts by surveying field crews to locate a physical monument. It is noted that the asphalt must contain traces of ferrous metal, as numerous readings can be detected with a magnetic locator. The position of a PK nail shown as the corner on some private surveys was calculated with respect to other common monuments and the PK nail was found at 3 inches below the surface of the road. The source of the PK nail is not known and preliminary reconnaissance and analysis indicated that this monument was likely further east than the actual corner. This corner was excavated on December 12, 2008. Excavation revealed a stone at 14 inches deep, 5.3 feet west and 1.1 feet south of the PK nail. The top 8 inches of the stone were exposed at which point it remained stable in the clay, and measured 14 inches N-S by 16 inches E-W. The stone fits well with several forms of evidence for this corner. While it appears to be slightly west of the physical intersection of Kissel Road and County Road 550 South, it fits well with the southerly prolongation of Kissel Road from the north and fits with a pattern of stones found along this road to the north being slightly west of the physical center. Kissel Road is offset at this intersection, as shown above, and it is observed that the road bears slightly to the east as it comes into the intersection from the north, in apparent preparation for the transition to the portion of road bearing south from the intersection, well to the east. The stone is within one foot of the north-south line connecting the stone found at the northeast corner of section 32 with the calculated southeast corner of section 32. The harrison monument was set directly over the top, center of the stone. This corner was originally established as a wood post in July, 1821.

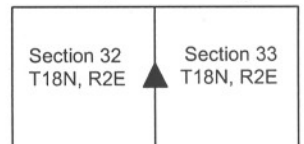


*Kenneth E. Hedge*  
 Kenneth E. Hedge, County Surveyor

*James S. Swift*  
 James S. Swift, IN LS 20200054

March 11, 2009

Eagle Township



PHOTOGRAPHIC DOCUMENTATION

Date of photography: December 17, 2008 and March 2, 2009

Corner stone.  
View of east side of stone as intially exposed.



Corner stone. View from above.



View from standing upon the harrison monument / stone, looking north along County Road 800 East (Kissel Road).



View from standing upon the harrison monument / stone, looking east along County Road 550 South.



For details and documentation, refer to related sheet "Section Corner Record."

# SECTION CORNER RECORD

# SE 550-900

## BOONE COUNTY SURVEYOR'S OFFICE

State Plane grid coordinates NAD83 (NSRS 2007):  
North: 1717699.67 East: 3172831.79 (U.S. survey feet)

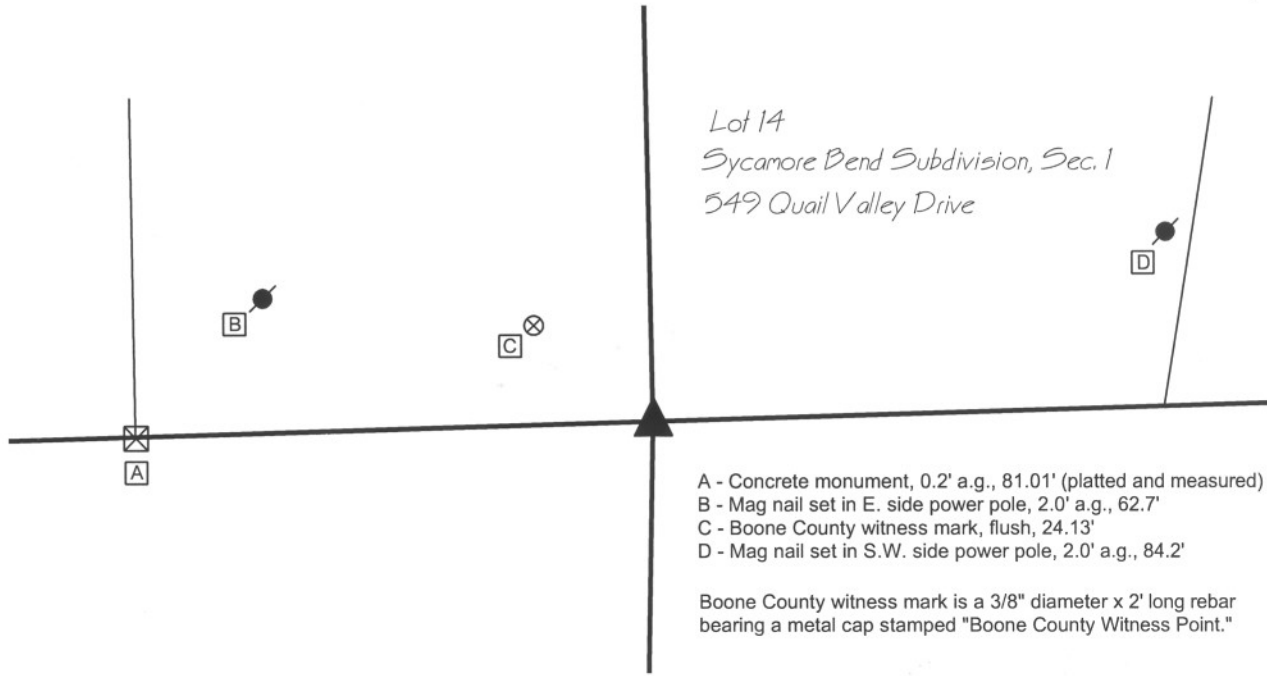
Type of monument: Harrison, 4" disk 'Section Corner'  
Depth: One inch below adjacent road surface

Indiana tie card references:  
IN02\_T18NR2E33\_44 IN02\_T18NR2E34\_36



### CORNER WITNESS DETAIL

SCALE 1" = 30'  
0' 15' 30'



- A - Concrete monument, 0.2' a.g., 81.01' (platted and measured)
- B - Mag nail set in E. side power pole, 2.0' a.g., 62.7'
- C - Boone County witness mark, flush, 24.13'
- D - Mag nail set in S.W. side power pole, 2.0' a.g., 84.2'

Boone County witness mark is a 3/8" diameter x 2' long rebar bearing a metal cap stamped "Boone County Witness Point."

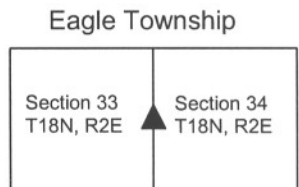
The harrison monument was set in place of a 5/8 inch rebar found. A BCS record of March 17, 1886 states "Reestablished from stump of Ash. Set rock 22, 18, 16 + on top." A BCS tie card dated March 6, 1991 shows the corner as a 5/8 inch rebar found. The plat of Sycamore Bend Subdivision, Section One, recorded in Plat Book 4, page 90 in the Office of the Boone County Recorder, which adjoins this corner on the north side, shows the corner 81.01 feet east of a concrete monument marking the southwest corner of the subdivision. A 5/8 inch rebar was found which agrees with the 1991 tie card and also agrees with the plat. All surveys and plats found which reference this corner have held the rebar. Extensive probing and manual excavation was performed in the vicinity of the rebar but the record stone was not found. It is noted that a small creek is located immediately to the south and a pipeline is located to the east of the corner. It is also noted that this corner falls approximately 48 feet east of a straight line connecting the section corners to the north and south. Consequently, the east line of the southeast quarter of section 33 bears slightly northeasterly as compared with other lines of the PLSS in this area. However, the rebar fits very well with evidence of the east line of said southeast quarter in the form a portion of a N-S county road which runs along it and the old N-S fence which exists along the line, north of the portion of road. The rebar was held as marking the corner and was replaced with a harrison monument. This corner was originally established as a wood post in July, 1821.



*Kenneth E. Hedge*  
Kenneth E. Hedge, County Surveyor

*James S. Swift*

James S. Swift, IN LS 20200054  
July 14, 2010



# SECTION CORNER RECORD

SE 600-800

## BOONE COUNTY SURVEYOR'S OFFICE

State Plane grid coordinates NAD83 (NSRS 2007):

Corner 1: North: 1714913.62 East: 3167460.82 (U.S. survey feet)

Corner 2: North: 1714919.27 East: 3167654.12 (U.S. survey feet)

Corner 1:

Type of monument: Calculated position, no monument set.

Corner 2:

Type of monument: Harrison, 4" disk 'Section Corner'

Depth: One inch below adjacent road surface

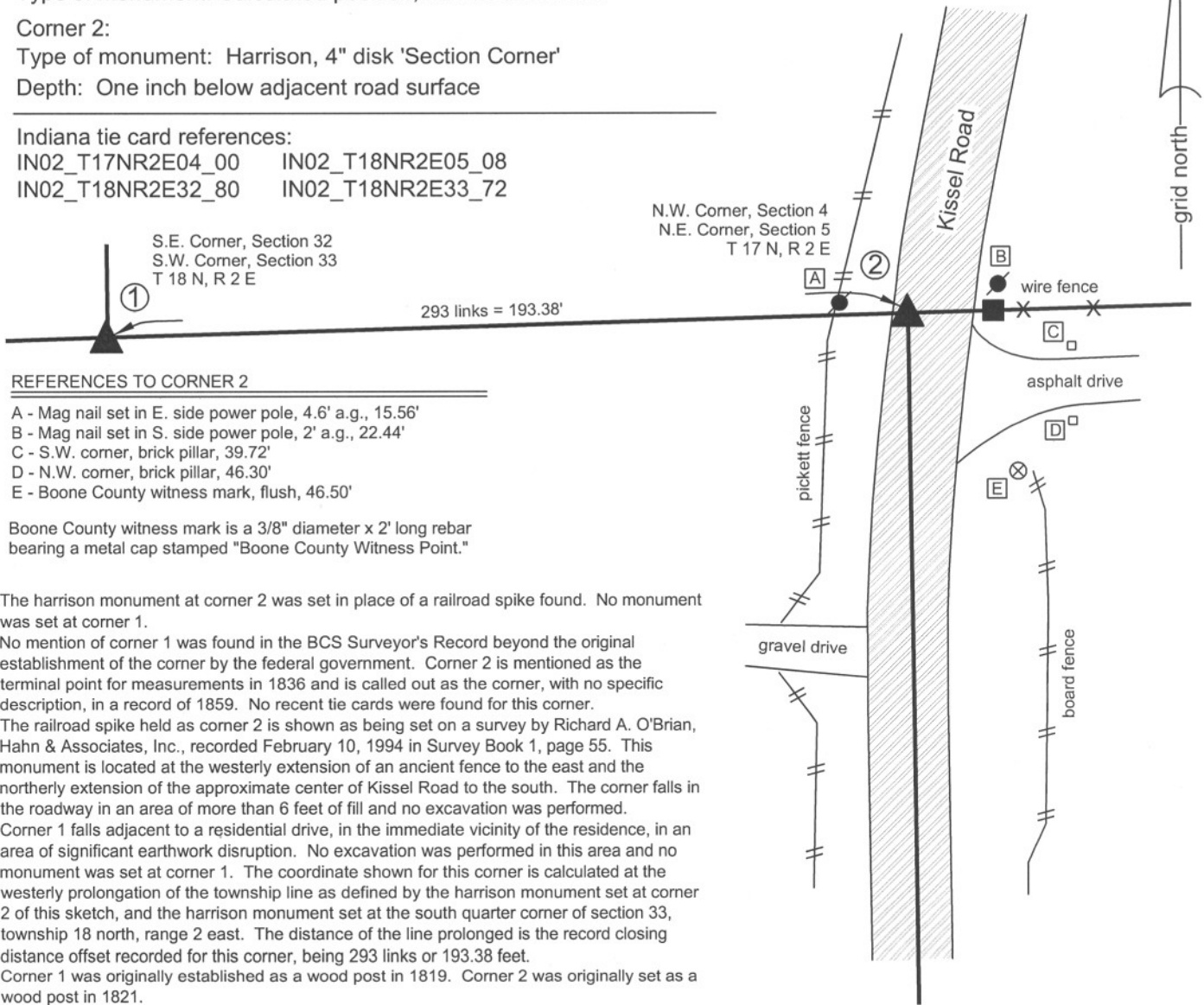
Indiana tie card references:

IN02\_T17NR2E04\_00 IN02\_T18NR2E05\_08

IN02\_T18NR2E32\_80 IN02\_T18NR2E33\_72

### CORNER WITNESS DETAIL

SCALE 1" = 40'



#### REFERENCES TO CORNER 2

- A - Mag nail set in E. side power pole, 4.6' a.g., 15.56'
- B - Mag nail set in S. side power pole, 2' a.g., 22.44'
- C - S.W. corner, brick pillar, 39.72'
- D - N.W. corner, brick pillar, 46.30'
- E - Boone County witness mark, flush, 46.50'

Boone County witness mark is a 3/8" diameter x 2' long rebar bearing a metal cap stamped "Boone County Witness Point."

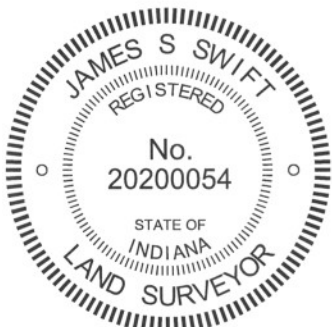
The harrison monument at corner 2 was set in place of a railroad spike found. No monument was set at corner 1.

No mention of corner 1 was found in the BCS Surveyor's Record beyond the original establishment of the corner by the federal government. Corner 2 is mentioned as the terminal point for measurements in 1836 and is called out as the corner, with no specific description, in a record of 1859. No recent tie cards were found for this corner.

The railroad spike held as corner 2 is shown as being set on a survey by Richard A. O'Brian, Hahn & Associates, Inc., recorded February 10, 1994 in Survey Book 1, page 55. This monument is located at the westerly extension of an ancient fence to the east and the northerly extension of the approximate center of Kissel Road to the south. The corner falls in the roadway in an area of more than 6 feet of fill and no excavation was performed.

Corner 1 falls adjacent to a residential drive, in the immediate vicinity of the residence, in an area of significant earthwork disruption. No excavation was performed in this area and no monument was set at corner 1. The coordinate shown for this corner is calculated at the westerly prolongation of the township line as defined by the harrison monument set at corner 2 of this sketch, and the harrison monument set at the south quarter corner of section 33, township 18 north, range 2 east. The distance of the line prolonged is the record closing distance offset recorded for this corner, being 293 links or 193.38 feet.

Corner 1 was originally established as a wood post in 1819. Corner 2 was originally set as a wood post in 1821.



*Kenneth E. Hedge*  
 Kenneth E. Hedge, County Surveyor

*James S. Swift*  
 James S. Swift, IN LS 20200054  
 March 1, 2012

Eagle Township

Section 32 T18N, R2E	Section 33 T18N, R2E
Section 5 T17N, R2E	Section 4 T17N, R2E



# SECTION CORNER RECORD

SE 600-900

## BOONE COUNTY SURVEYOR'S OFFICE

State Plane grid coordinates NAD83 (NSRS 2007):

North: 1715051.65 East: 3172786.80 (U.S. survey feet) (standard corner)

North: 1715056.74 East: 3172956.22 (U.S. survey feet) (closing corner)

Type of monument: Harrison, 4" disk 'Section Corner'

Depth: Corner 1: flush. Corner 2: two inches above grade.

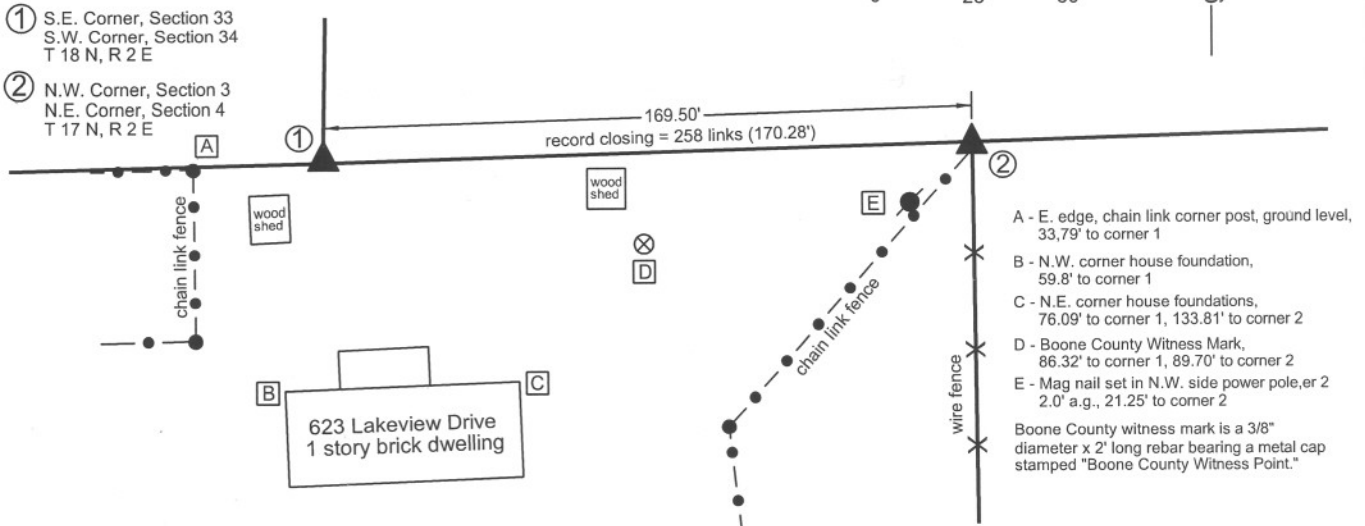
Indiana tie card references:

IN02\_T17NR2E03\_08 IN02\_T17NR2E04\_00

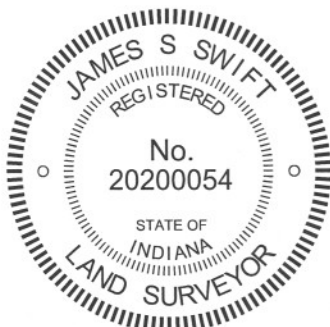
IN02\_T18NR2E33\_80 IN02\_T18NR2E34\_72

### CORNER WITNESS DETAIL

SCALE 1" = 50'



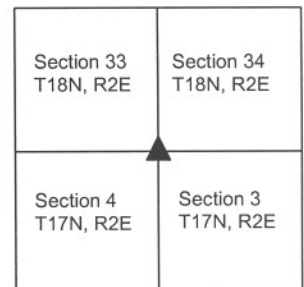
The Harrison monument at the standard corner (corner 1) was set in place of a stone found. The Harrison monument at the closing corner (corner 2) was set on line between corner 1 and the standard corner one-half mile east, and immediately north of an iron pipe held previously identified as the corner. Neither of these corners are specifically described in the BCS Surveyor's Record. Corner 1 is mentioned as the terminal point for measurements in records of 1834, 1883 and 1894. Corner 2 is mentioned as such in records of 1836, 1857, 1894. A BCS tie card dated May 23, 1991 shows the corner as a "suck rod" found on the south side of an 8x8 inch wood post. This "suck rod" has been held for many private surveys since, most noting it as an iron pipe. This corner was excavated on September 23, 2008. Prior to excavation, the "suck rod" was visible in the vicinity of corner 2, being a one-inch diameter iron pipe. The post referred to in the 1991 tie card was broken off, but the base of the post was still present in the ground. Excavation around the post yielded several rocks, none of which could be positively identified as being a specific corner stone and all of which appeared to be rocks set for the purposes of bracing the post. In the vicinity of corner 1, a steel fence post broken off at the ground was found with a magnetic locator. Excavation yielded remnants of a wood post immediately south of the steel post. At the southeast edge of the post remnants two stones were found on top of each other. The top stone was 9 inches tall by 6 inches E-W by 3 inches N-S. While this is somewhat small for a section corner stone, it bore the characteristics of a corner stone in its orientation, being vertical and oriented in cardinal directions. Another stone was found directly below, measuring 6x5x4 inches. Other rocks were not found around the remnants of the post. The two found stones did not appear to be brace rocks and did appear to be specific corner monuments. The stones were removed and the Harrison monument was set in their place. The distance from corner 1, as so established and monumented to the iron pipe previously held as corner 2 is within one foot of the original closing distance. The pipe was at the south edge of the base of the old corner post, with no specific documentation found for this placement. The township line, connected from corner 1 to the standard corner one-half mile east (see SE-600-950) falls on the north side of the post. Given the previous references to the pipe or suck rod as the corner, the pipe was held to define the E-W position of the corner. The township line was held to define the N-S position and corner 2 was established on the township line, immediately north of the iron pipe. This point is 1.25 feet north of the position of the iron pipe (removed) and at the north edge of the base of the old 8x8 inch wood post. A Harrison monument was set at this computed position for corner 2 on September 18, 2009. The standard corner was originally established as a wood post in 1819 and another wood post was set at the closing corner in 1821.



*Kenneth E. Hedge*  
Kenneth E. Hedge, County Surveyor

*James S. Swift*  
James S. Swift, IN LS 20200054  
July 14, 2010, Revised March 1, 2012

Eagle Township



PHOTOGRAPHIC DOCUMENTATION

Date of photography: September 2008 & September 2009

Corner 2 as found, showing the pipe and metal posts to the south. The above ground portion of the wood post is lying on the adjacent ground.



Corner 2 being excavated, showing the pipe, metal posts to the south, the in ground portion of the wood post, and a rock found on the north side of the post, presumably a brace rock.



The top stone found at corner 1.



The lower stone found at corner 2 and the remains of the old wood post found adjacent to the two stones.



For details and documentation, refer to related sheet "Section Corner Record."