

SECTION CORNER RECORD

SE 500-200

BOONE COUNTY SURVEYOR'S OFFICE

State Plane grid coordinates NAD83 (NSRS 2007):

North: 1719359.75 East: 3135360.29 (U.S. survey feet)

Type of monument: Harrison, 4" disk 'Section Corner'

Depth: One inch below adjacent road surface

Indiana tie card references:

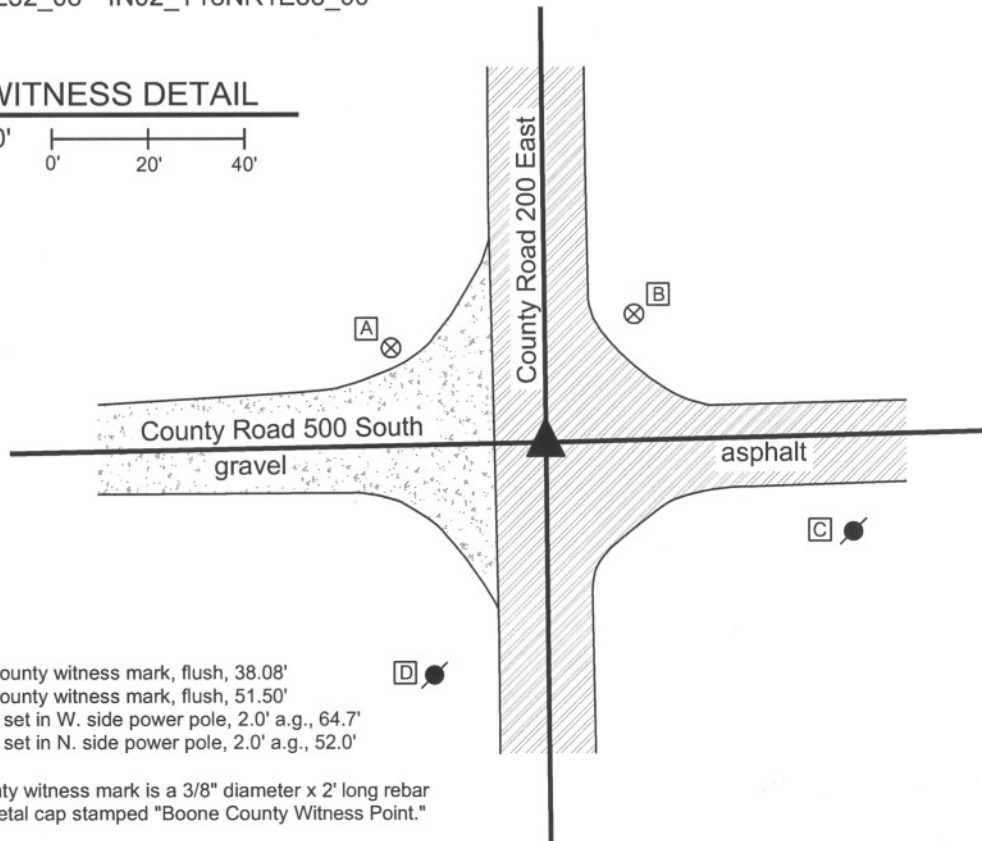
IN02_T18NR1E28_72 IN02_T18NR1E29_80

IN02_T18NR1E32_08 IN02_T18NR1E33_00



CORNER WITNESS DETAIL

SCALE 1" = 40'



- A - Boone County witness mark, flush, 38.08'
- B - Boone County witness mark, flush, 51.50'
- C - Mag nail set in W. side power pole, 2.0' a.g., 64.7'
- D - Mag nail set in N. side power pole, 2.0' a.g., 52.0'

Boone County witness mark is a 3/8" diameter x 2' long rebar bearing a metal cap stamped "Boone County Witness Point."

The harrison monument was set over a stone found.

A BCS record of August 19 - 20, 1867 states "Reestablished in line 40.15 from D & D Sect. 29. Set a Rock 13,12,11." A BCS tie card dated July 20, 1968 states "no stone." This corner was excavated on November 10, 2009. Prior to excavation, a road nail was found in a hole in the asphalt 4 inches below grade. Excavation revealed a railroad rail on end at 8 inches deep below the nail. Further excavation revealed the record stone found at 21 inches deep, north of the rail. The stone is embedded in the clay layer below the road, protruding approximately 3 inches out of the clay into the base of the road. The stone measures 13 inches NE-SW by 11 inches NW-SE and is 12 inches tall. No specific markings were found on the stone, nor were any mentioned in the record. The harrison monument was set over the the approximate top center of the stone. The nail and railroad rail, both removed during excavation, had been 1.5 feet south and 0.7 foot east of the stone.

This corner was originally established as a wood post in June, 1820.



Kenneth E. Hedge
Kenneth E. Hedge, County Surveyor

James S. Swift

James S. Swift, IN LS 20200054

July 14, 2010

Perry Township

Section 29 T18N, R1E	Section 28 T18N, R1E
Section 32 T18N, R1E	Section 33 T18N, R1E

PHOTOGRAPHIC DOCUMENTATION

Date of photography: November 10, 2009

View of the stone as first exposed.
View from above and east.



View of the stone after drying in the air briefly.
View from above and east.



View from the south, looking across the stone
and north along County Road 200 East.



For details and documentation, refer to
related sheet "Section Corner Record."

SECTION CORNER RECORD

SE 500-300

BOONE COUNTY SURVEYOR'S OFFICE

State Plane grid coordinates NAD83 (NSRS 2007):

North: 1719492.96 East: 3140701.81 (U.S. survey feet)

Type of monument: Harrison, 4" disk 'Section Corner'

Depth: 4 inches below adjoining gravel road surface.

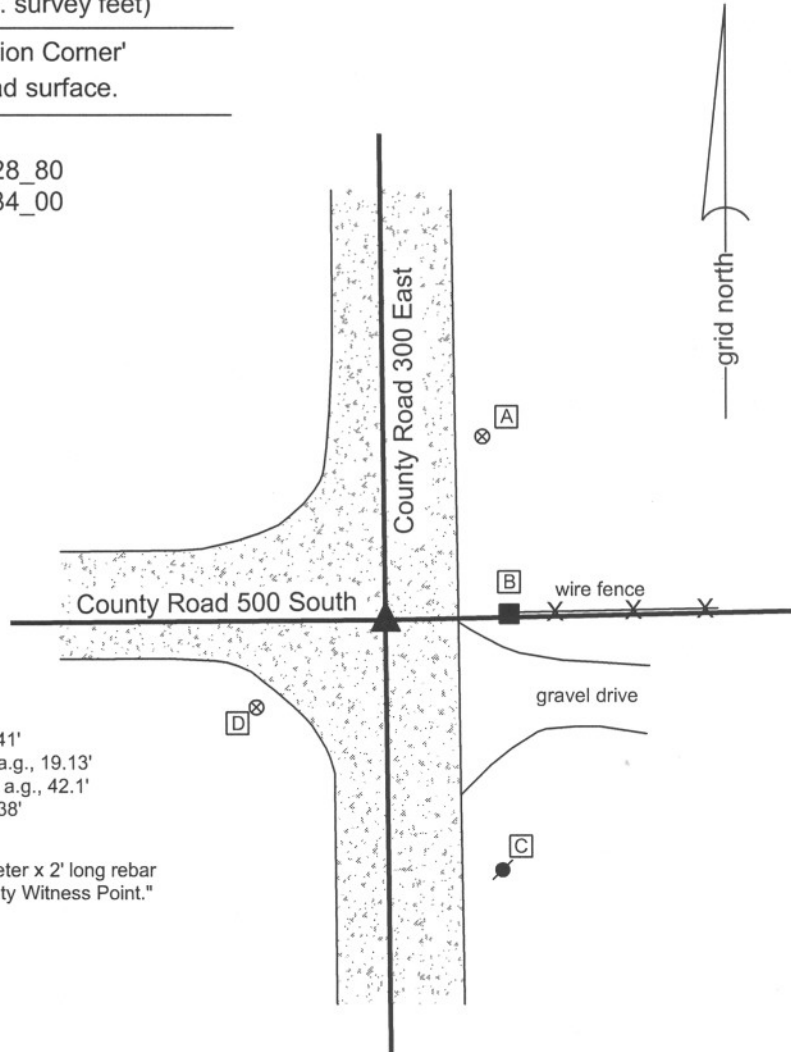
Indiana tie card references:

IN02_T18NR1E27_72 IN02_T18NR1E28_80

IN02_T18NR1E33_08 IN02_T18NR1E34_00

CORNER WITNESS DETAIL

SCALE 1" = 30'



- A - Boone County witness mark, flush, 32.41'
- B - Mag nail set in N. side wood post, 0.5' a.g., 19.13'
- C - Mag nail set in N. side power pole, 1.7' a.g., 42.1'
- D - Boone County witness mark, flush, 24.38'

Boone County witness mark is a 3/8" diameter x 2' long rebar bearing a metal cap stamped "Boone County Witness Point."

The Harrison monument was set over the top, high point of a stone found.

No known BCS records were found for this corner beyond the original establishment of the corner by federal surveyors.

Prior to excavation, a 1/2" diameter rebar was found at the approximate intersection of the two roads and at the extension of the old fence to the east.

The source of the rebar is not known. The corner was excavated on May 15, 2008. Excavation yielded a stone found at 16 inches deep. The top of the stone is 15 inches E-W by 11 inches N-S, protruding 2 inches out of the clay base into the gravel sub-base of the road. The top 7 inches of the stone were exposed, at which point the stone remained entirely stable, indicating that it protrudes further into the clay. The Harrison monument was set directly over the top, high point of the stone. The rebar, removed during excavation, was 0.7 feet N and 0.5 feet E of the top, high point of the stone.

This corner was originally established as a wood post in June, 1820.



Kenneth E. Hedge
 Kenneth E. Hedge, County Surveyor

James S. Swift
 James S. Swift, IN LS 20200054

March 11, 2009

Perry Township

Section 28 T18N, R1E	Section 27 T18N, R1E
Section 33 T18N, R1E	Section 34 T18N, R1E

PHOTOGRAPHIC DOCUMENTATION

Date of photography: May 15, 2008

Corner stone - view from above.



Corner stone - view from the south.



View from west, looking across hole to wood end post at the terminus of an old fence to the east. The stone is not visible, but shown by arrow.



View from the east looking across the hole and along County Road 500 South to the west.



For details and documentation, refer to related sheet "Section Corner Record."

SECTION CORNER RECORD

SE 550-200

BOONE COUNTY SURVEYOR'S OFFICE

State Plane grid coordinates NAD83 (NSRS 2007):

North: 1716698.61 East: 3135385.06 (U.S. survey feet)

Type of monument: Harrison, 4" disk 'Section Corner'

Depth: One inch below adjacent road surface

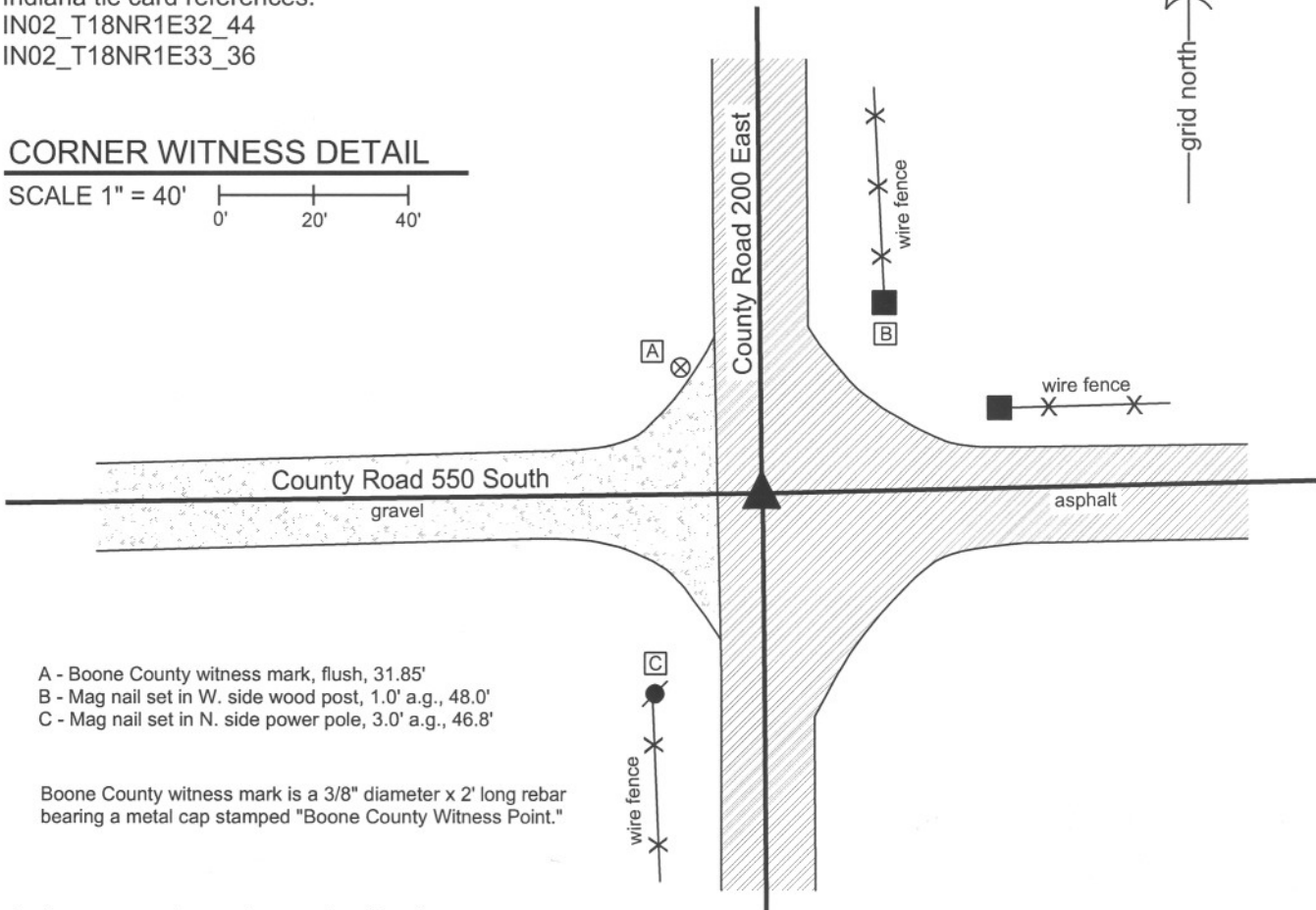
Indiana tie card references:

IN02_T18NR1E32_44

IN02_T18NR1E33_36

CORNER WITNESS DETAIL

SCALE 1" = 40'



- A - Boone County witness mark, flush, 31.85'
- B - Mag nail set in W. side wood post, 1.0' a.g., 48.0'
- C - Mag nail set in N. side power pole, 3.0' a.g., 46.8'

Boone County witness mark is a 3/8" diameter x 2' long rebar bearing a metal cap stamped "Boone County Witness Point."

The harrison monument was set over a stone found.

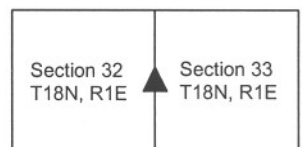
A BCS record of August 19-20, 1867 states "Reestablished from stump of one tree. Set Rock 20,12,12." A BCS tie card dated July 10, 1968 states "no stone." This corner was excavated on November 20, 2009. Prior to excavation a mag nail was found 1 inch deep. Excavation revealed a 5/8 inch rebar found at 3 inches deep, 0.5 foot north and 0.15 foot west of the nail. A section of railroad rail on end was found at 11 inches deep below the rebar. A rock was found at 14 inches deep (8 inches x 7 inches x 5 inches) south and east of the rail. Two more stones were found below this rock, one to the east and one to the west. The east rock was 6 inches x 8 inches x 8 inches. The west rock is the record stone. With 15 inches of the top of the stone exposed it measures 12 inches E-W and 12 inches N-S. The top of the stone is at the top of the clay layer below the road. No specific markings were found on the rock, nor were any mentioned in the 1867 record. The harrison monument was set over the top, center of the record stone. The nail, rebar and rail were removed during excavation. The nail had been 1.1 feet north and 0.25 foot east of the stone. The rebar and rail had been 1.6 feet north and 0.1 foot east of the stone. This corner was originally established as a wood post in June, 1820.



Kenneth E. Hedge
 Kenneth E. Hedge, County Surveyor

James S. Swift
 James S. Swift, IN LS 20200054
 July 14, 2010

Perry Township



PHOTOGRAPHIC DOCUMENTATION

Date of photography: November 20, 2009

The railroad rail found.



The first, top, stone found.



The two lower stones found. View from the west. The record stone is in the foreground.



The two lower stones found. View from the north. The north side of the record stone is exposed.



For details and documentation, refer to related sheet "Section Corner Record."

SECTION CORNER RECORD

SE 550-300

BOONE COUNTY SURVEYOR'S OFFICE

State Plane grid coordinates NAD83 (NSRS 2007):

North: 1716836.23 East: 3140733.84 (U.S. survey feet)

Type of monument: Harrison, 4" disk 'Section Corner'

Depth: flush with adjacent road surface

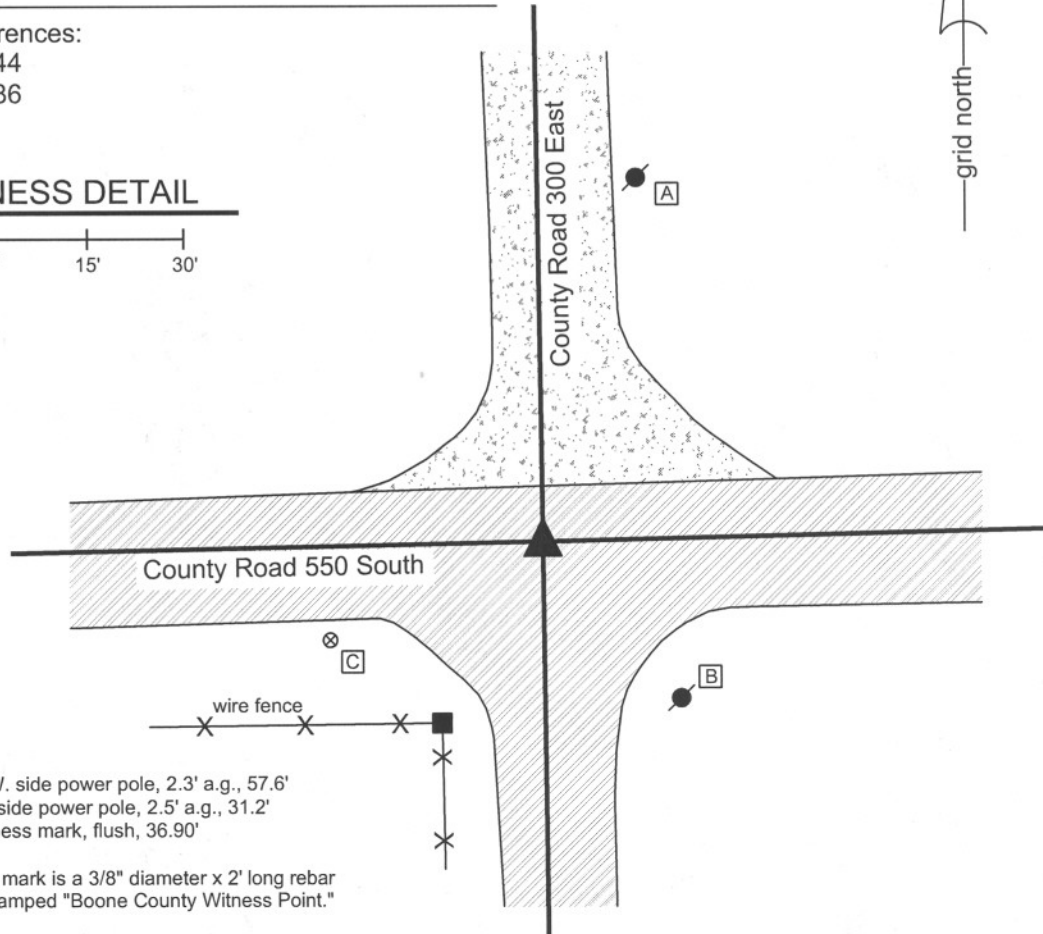
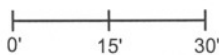
Indiana tie card references:

IN02_T18NR1E33_44

IN02_T18NR1E34_36

CORNER WITNESS DETAIL

SCALE 1" = 30'



A - Mag nail set in S.W. side power pole, 2.3' a.g., 57.6'

B - Mag nail set in W. side power pole, 2.5' a.g., 31.2'

C - Boone County witness mark, flush, 36.90'

Boone County witness mark is a 3/8" diameter x 2' long rebar bearing a metal cap stamped "Boone County Witness Point."

The Harrison monument was set directly over the chiseled "+" found on a granite stone.

A BCS record of February 20, 1873 states "reestablished from SE Poplar, the other had just been dug out. Set two rocks. One 13, 9, 6 +. Top one (Sandy) 18, 14, 17 +." No other BCS records are known for this corner beyond the original establishment of the corner by federal surveyors. This corner was excavated on May 15, 2008. Prior to excavation, a Mag nail was visible flush with the surface of the road at the approximate intersection of the centers of the county roads. Excavation revealed that this nail was over an iron bolt slightly below the surface. Further excavation yielded a stone found 26 inches deep. This stone measured 12 inches x 12 inches x 7 inches, was in fill, not embedded in the clay and does not fit the description of either of the record stones. This stone was removed and another stone was found directly below it. The lower stone is 13 inches E-W by 9 inches N-S and 6 inches thick with an identifiable + etched on the top center, embedded in the top of the clay layer. This represents the lower of the two record stones. The horizontal orientation of the lower stone fits with the pattern from that time frame of establishing the upper stone vertically above a lower stone which was set horizontally. The Harrison monument was set directly over the etched "+" on the record stone. The mag nail was approximately 0.3 foot East of this point. This corner was originally established as a wood post in 1820.



Kenneth E. Hedge
 Kenneth E. Hedge, County Surveyor

James S. Swift
 James S. Swift, IN LS 20200054

March 11, 2009

Perry Township

Section 33 T18N, R1E	Section 34 T18N, R1E
-------------------------	-------------------------

PHOTOGRAPHIC DOCUMENTATION

Date of photography: May 15, 2008

Upper stone. Does not match the record dimensions for the record upper corner stone. Stone is in fill material, not in clay.



Lower stone as first exposed directly below the upper stone. This stone does match the dimensions of the record lower corner stone, has a deep etched "+" on top and is embedded in the clay.



Lower stone more fully exposed and washed.



Same picture as to the left with the etched "+" enhanced for ease of visual detection.



For details and documentation, refer to related sheet "Section Corner Record."

SECTION CORNER RECORD

SE 600-200

BOONE COUNTY SURVEYOR'S OFFICE

State Plane grid coordinates NAD83 (NSRS 2007):

Corner 1: North: 1714039.90 East: 3135409.57 (U.S. survey feet)

Corner 2: North: 1714043.09 East: 3135538.23 (U.S. survey feet)

CORNER WITNESS DETAIL

SCALE 1" = 60'



Corner 1:

Type of monument: Harrison, 4" disk 'Section Corner'

Depth: One inch below adjacent road surface

Corner 2:

Type of monument: 5/8 inch rebar with metal cap stamped "Boone County Surveyor"

Depth: Flush with adjacent ground.

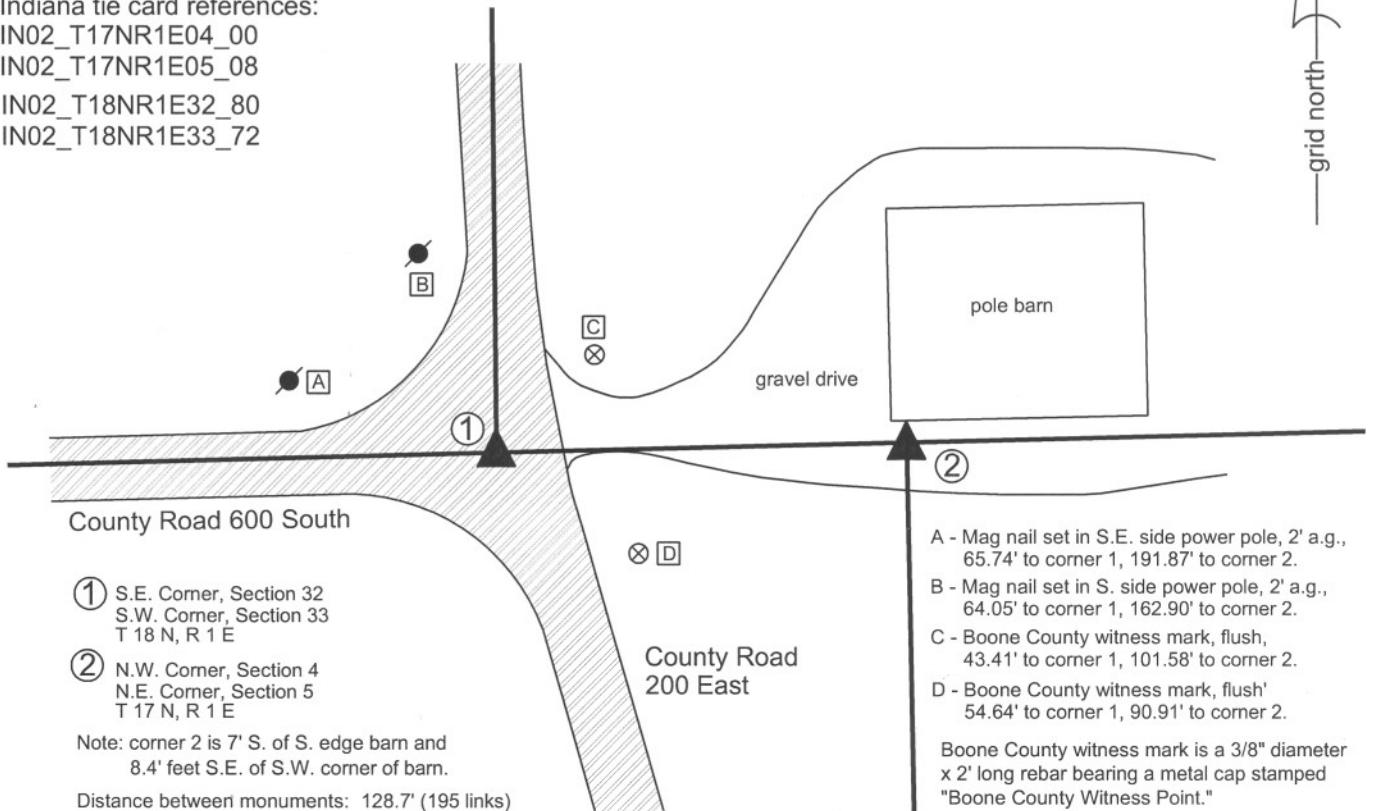
Indiana tie card references:

IN02_T17NR1E04_00

IN02_T17NR1E05_08

IN02_T18NR1E32_80

IN02_T18NR1E33_72



County Road 600 South

- ① S.E. Corner, Section 32
S.W. Corner, Section 33
T 18 N, R 1 E

- ② N.W. Corner, Section 4
N.E. Corner, Section 5
T 17 N, R 1 E

Note: corner 2 is 7' S. of S. edge barn and 8.4' feet S.E. of S.W. corner of barn.

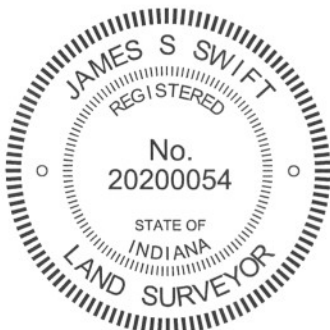
Distance between monuments: 128.7' (195 links)

County Road 200 East

- A - Mag nail set in S.E. side power pole, 2' a.g., 65.74' to corner 1, 191.87' to corner 2.
- B - Mag nail set in S. side power pole, 2' a.g., 64.05' to corner 1, 162.90' to corner 2.
- C - Boone County witness mark, flush, 43.41' to corner 1, 101.58' to corner 2.
- D - Boone County witness mark, flush, 54.64' to corner 1, 90.91' to corner 2.

Boone County witness mark is a 3/8" diameter x 2' long rebar bearing a metal cap stamped "Boone County Witness Point."

The harrison monument at corner was set in place of a railroad rail found. The capped rebar at corner 2 was set in a calculated position. A BCS record of August 19, 1867 for corner 1 states "Reestablished from one tree. Set a Rock 16,14,8." A BCS tied card for the same corner, dated July 10, 1968 states "Stone found." No specific references were found for corner 2 beyond the original establishment of the corner in 1820. Excavation at corner 1 yielded a railroad rail found at 9 inches below grade. No other evidence was found. Though the tie card merely states "stone found," it is known that the standard procedure of BCS field crews from that era was to remove a stone, if found, and replace it with a 30 inch length of railroad rail set on end. It is believed that the found rail is in the same position as the stone found in 1968. The rail was accepted as the best evidence of corner 1. The rail was removed and a harrison monument was set in its place. No specific evidence was found in the immediate vicinity of corner 2. This corner falls adjacent to a large pole barn and significant excavation was not performed. Corner 2 was established on the range line at the record government closing distance of 195 links (128.7 feet) east of corner 1. This position fits well with the extended roadway to the south. A 5/8 inch diameter rebar, 3 feet long, with an aluminum cap stamped 'Boone County Surveyor' was set at corner 2. Corner 1 was originally established as a wood post in 1819. Corner 2 was originally established as a wood post in 1821.



Kenneth E. Hedge
 Kenneth E. Hedge, County Surveyor

James S. Swift
 James S. Swift, IN LS 20200054
 July 25, 2011

Worth Township

Section 32 T18N, R1E	Section 33 T18N, R1E
Section 5 T17N, R1E	Section 4 T17N, R1E

SECTION CORNER RECORD

SE 600-250

BOONE COUNTY SURVEYOR'S OFFICE

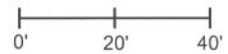
State Plane grid coordinates NAD83 (NSRS 2007):

Corner 1: North: 1714106.25 East: 3138088.74 (U.S. survey feet)

Corner 2: North: 1714108.84 East: 3138183.08 (U.S. survey feet)

CORNER WITNESS DETAIL

SCALE 1" = 40'



Corners 1 & 2:

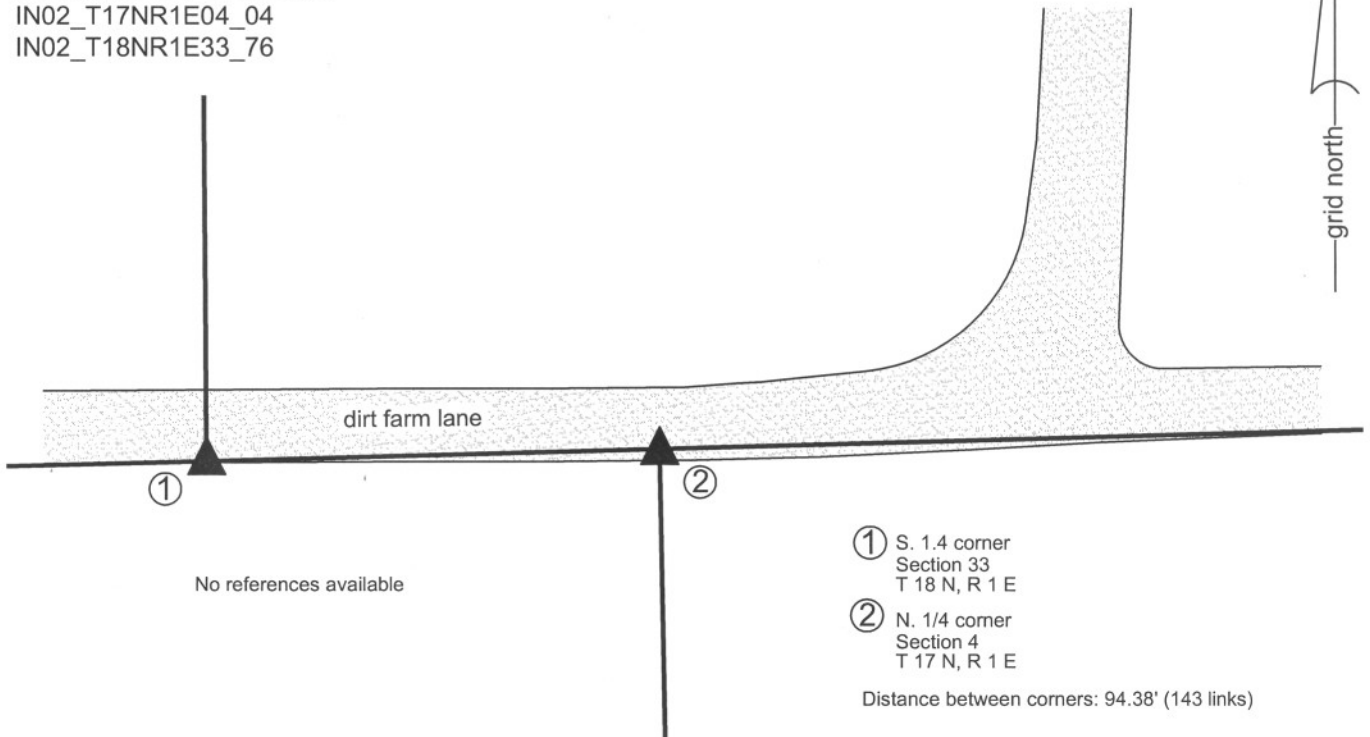
Type of monument: 5/8 inch rebar bearing a metal cap stamped Boone County Surveyor'

Depth: 12 inches below adjacent ground

Indiana tie card references:

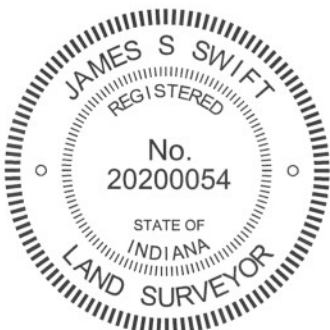
IN02_T17NR1E04_04

IN02_T18NR1E33_76



Both corners were set at calculated positions, as no direct evidence of the corners were found in the immediate vicinity.

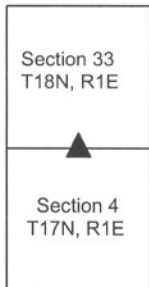
No specific records were found referencing corner 1 beyond the original establishment of the corner in 1819. A BCS record dated October 11-12, 1867 states with respect to corner 2 "Established 143 links East of 1/4 Sect. corner for section 33. Set a Rock 6,5,4 marked +. Several pieces under it." The same record also states, with respect to the northeast corner or the west half of the northeast quarter of Section 4 (henceforth referred to as '1/8 corner'), "Established 117 links East of the 1/8 Sect. corner for Sect. 33. Set a rock 20, 16, 33 mark + on top." A BCS tie card dated March 18, 1976 shows a stone found at this 1/8 corner. Using the 1976 ties, the stone at the 1/8 corner was found. It is noted that the 143 link offset at the 1/4 corner (subject corner of this tie card) represents the average of the record closing distances for the section corners to the east (91 links) and west (195 links). It is also noted that the 117 link offset stated for the 1/8 corner is the average of 143 links and 91 links. The position of corner 2 was established on the westerly extension of the line connecting northeast corner of section 4 (please refer to the tie card for that corner for more information) with the found stone at the 1/8 corner, at double the distance between the respective corners. Corner 1 was established on the further westerly prolongation of this line at 143 links (94.38 feet) from corner 2. It is noted that corner 1, as so established, falls 3.5 feet south and 2.9 feet east of the calculated midpoint of the line connecting the southeast and southwest corners of section 33. 30 inch lengths of 5/8 inch diameter rebars were set at both corner 1 and corner 2. Both rebars bear an aluminum cap stamped 'Boone County Surveyor' and both were set approximately 12 inches below grade to protect them from disruption due to adjacent farming operations. Corner 1 was originally established in 1819. Corner 2 was not established by the federal government and was set by the Boone County Surveyor in 1867.



Kenneth E. Hedge
 Kenneth E. Hedge, County Surveyor

James S. Swift
 James S. Swift, IN LS 20200054
 July 25, 2011

Perry Twp



SECTION CORNER RECORD

BOONE COUNTY SURVEYOR'S OFFICE

SE 600-300

State Plane grid coordinates NAD83 (NSRS 2007):

Corner 1: North: 1714179.39 East: 3140761.91 (U.S. survey feet)

Corner 2: North: 1714180.84 East: 3140821.96 (U.S. survey feet)

CORNER WITNESS DETAIL

SCALE 1" = 40'



Corner 1:

Type of monument: Harrison, 4" disk 'Section Corner'

Depth: flush with adjacent ground.

Corner 2:

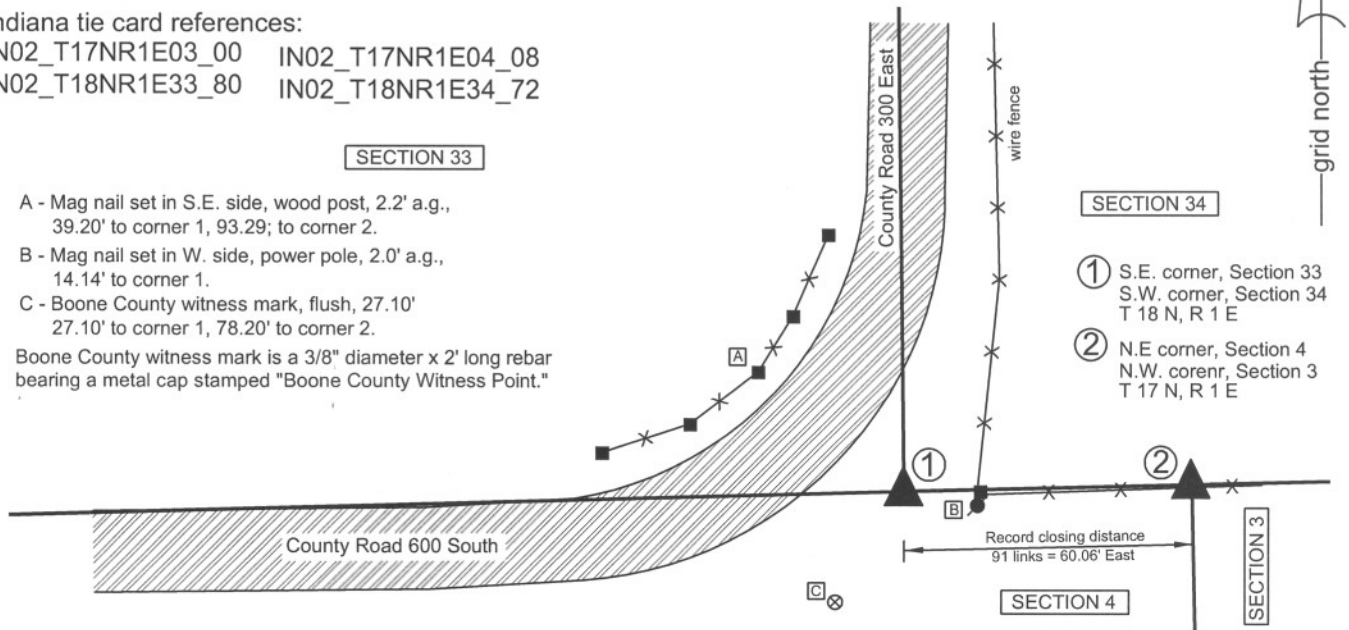
Type of monument: 5/8" rebar with metal cap stamped "Boone County Surveyor"

Depth: flush with adjacent ground.

Indiana tie card references:

IN02_T17NR1E03_00 IN02_T17NR1E04_08

IN02_T18NR1E33_80 IN02_T18NR1E34_72



A - Mag nail set in S.E. side, wood post, 2.2' a.g.,
39.20' to corner 1, 93.29; to corner 2.

B - Mag nail set in W. side, power pole, 2.0' a.g.,
14.14' to corner 1.

C - Boone County witness mark, flush, 27.10'
27.10' to corner 1, 78.20' to corner 2.

Boone County witness mark is a 3/8" diameter x 2' long rebar
bearing a metal cap stamped "Boone County Witness Point."

- SECTION 34
- ① S.E. corner, Section 33
S.W. corner, Section 34
T 18 N, R 1 E
 - ② N.E. corner, Section 4
N.W. corner, Section 3
T 17 N, R 1 E

The harrison monument at corner 1 was set in place of two stones found. The rebar at corner 2 was set in a calculated position. A BCS record of November 14, 1912 states with respect to corner 1 "Set rock corner between sec. 33 and 34. In line with rocks at f and F in sec. 34." No specific records were found for corner 2 beyond the original establishment of the corner in 1820. No BCS tie cards were found for either corner. Preliminary excavation occurred on May 22, 2008. Prior to excavation an iron pipe was found using a magnetic locator. The pipe was at the southerly prolongation of the approximate center of County Road 300 East and immediately west of a wood corner post to the east. It is noted that the wood corner post appears to be new, as does the section of fence attached to it to the east. The new section of fence blends into older fence approximately 300 feet east, at which point the fence is further north. Excavation revealed a stone approximately 1.9 feet north of the pipe. The stone is 24 inches E-W by 16 inches N-S by 8 inches thick. The letters "RT" are etched deeply into the top of the stone, with R to the west and T to the east. On May 22, the "RT" stone was left in place pending further research into the probable source of the letters. Research of the deed record uncovered two instances where the adjoining property owners had the respective names which begin with R (west, section 33) and T (east, section 34). In the early 1930s the property owners were Reed and Tague, while in the early 1940s the property owners were Ragan and Tyler. Tyler still owns land in section 34, though not the parcel immediately adjoining the corner. It is possible that the RT represents the initials of these property owners. On August 15, 2008 the RT stone was removed and another stone was found directly beneath it, being 14 inches deep, 13 inches E-W, 11 inches N-S and 8 inches thick. Local farmer Dan Tyler reports that the old fence to the east was built in the 1940s and that the position of the stones fit with the terminus of the old fence, now removed, which was slightly north of where the new fence is built. This observation fits with the fact that the old section of fence remaining further east is slightly north of the new fence. The two stones were accepted as the best evidence of the original location of corner 1 and the harrison monument was set in place of the stones, both of which were removed. No specific evidence was found for corner 2 and this corner was established on the township line at the original government closing distance of 91 links 60.06 feet. A 30 inch length of 5/8 inch diameter rebar bearing an aluminum cap stamped 'Boone County Surveyor' was set at this corner.

Corner 1 was originally established as a wood post in 1819 and corner 2 was originally established as a wood post in 1820.



Kenneth E. Hedge
Kenneth E. Hedge, County Surveyor

James S. Swift
James S. Swift, IN LS 20200054

March 11, 2009, revised July 25, 2011

Perry Township

