

SECTION CORNER RECORD

NW 650-1100

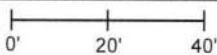
BOONE COUNTY SURVEYOR'S OFFICE

State Plane grid coordinates NAD83 (2011):
North: 1780124.10 East: 3066588.66 (U.S. survey feet)

Type of monument: Harrison, 4" disk 'Section Corner'
Depth: One inch below adjacent road surface

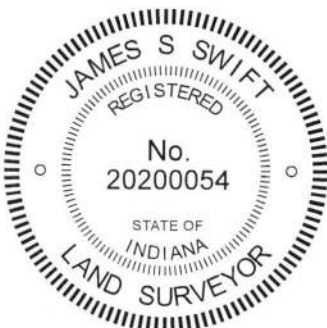
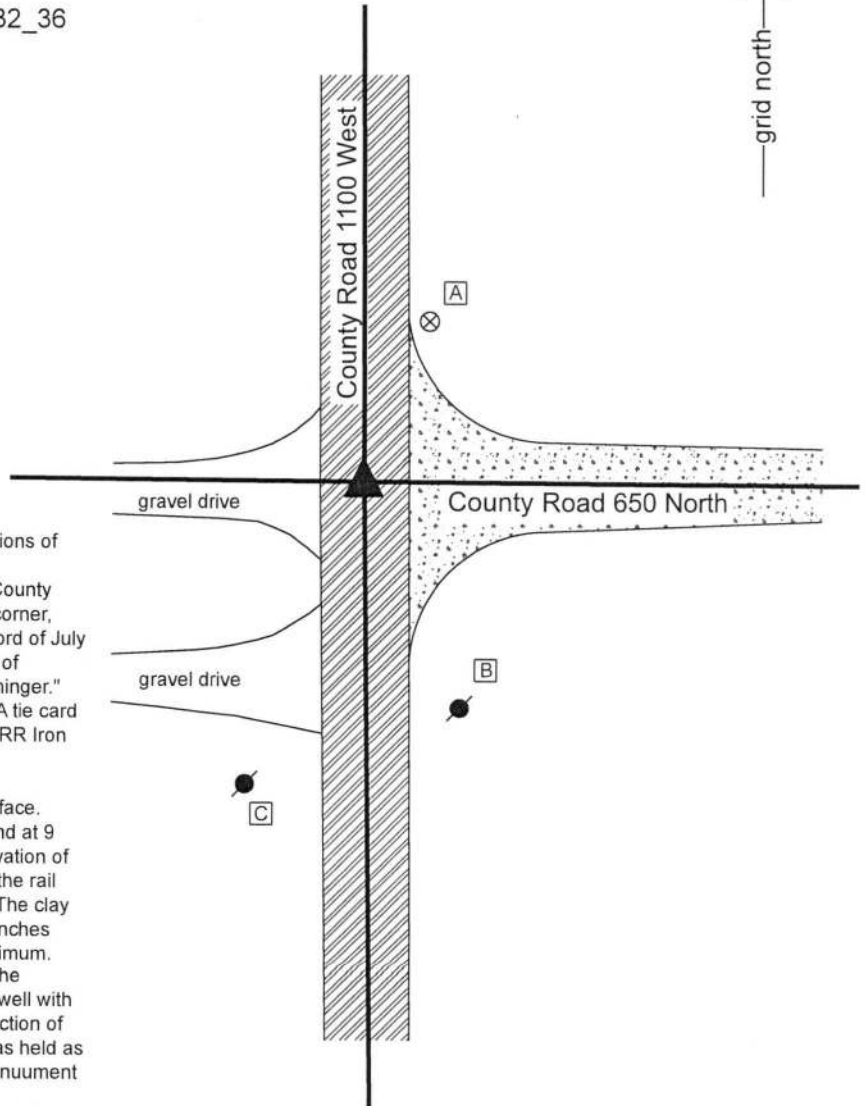
Indiana tie card references:
IN02_T20NR2W31_44 IN02_T20NR2W32_36

CORNER WITNESS DETAIL

SCALE 1" = 40' 

- A - Boone County witness mark, flush, 35.9'
- B - Mag nail set in N.W. side power pole, 2' a.g., 49.9'
- C - Mag nail set in N.E. side power pole, 2' a.g., 65.9'

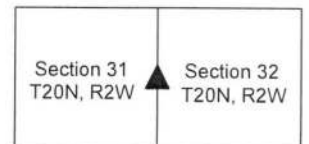
The Harrison monument was set in place of vertical sections of rebar and railroad rail found.
 A BCS record of April 24, 1858 attributed to the Boone County Surveyor named Ensminger states, with respect to this corner, "Reest. from old wit trees. Set Rock 17.21." A BCS record of July 9, 1867 states "Reest. by Ensminger" and a BCS record of September 19, 1910 states "Found rock set by Mr. Ensminger." A BCS tie card dated July 26, 1971 states, "No stone." A tie card dated October 13, 1977 states "By State Highway Eng. RR Iron Found."
 This corner was excavated on August 30, 2018. Prior to excavation, a 5/8 inch rebar was found flush with the surface. Excavation revealed a vertical section of railroad rail found at 9 inches, directly below the top of the rebar. Further excavation of an area extending 2.5 feet in all cardinal directions from the rail and rebar did not reveal further evidence of the corner. The clay layer below the bottom of the road bed was found at 16 inches deep. Excavation was performed to 20 inches deep minimum. The rail is believed to have been set in association with the creation of the 1971 tie card. The position of the rail fits well with the local evidence of the corner in the form of the intersection of the approximate centers of the county roads. The rail was held as marking the corner and was replaced with a Harrison monument set in the same position.
 This corner was originally established as a wood post in 1822.



Kenneth E. Hedge
 Kenneth E. Hedge, County Surveyor

James S. Swift
 James S. Swift, IN LS 20200054
 September 5, 2018

Sugar Creek Township



SECTION CORNER RECORD

NW 700-1000

BOONE COUNTY SURVEYOR'S OFFICE

State Plane grid coordinates NAD83 (2011):
North: 1782740.08 East: 3071902.64 (U.S. survey feet)

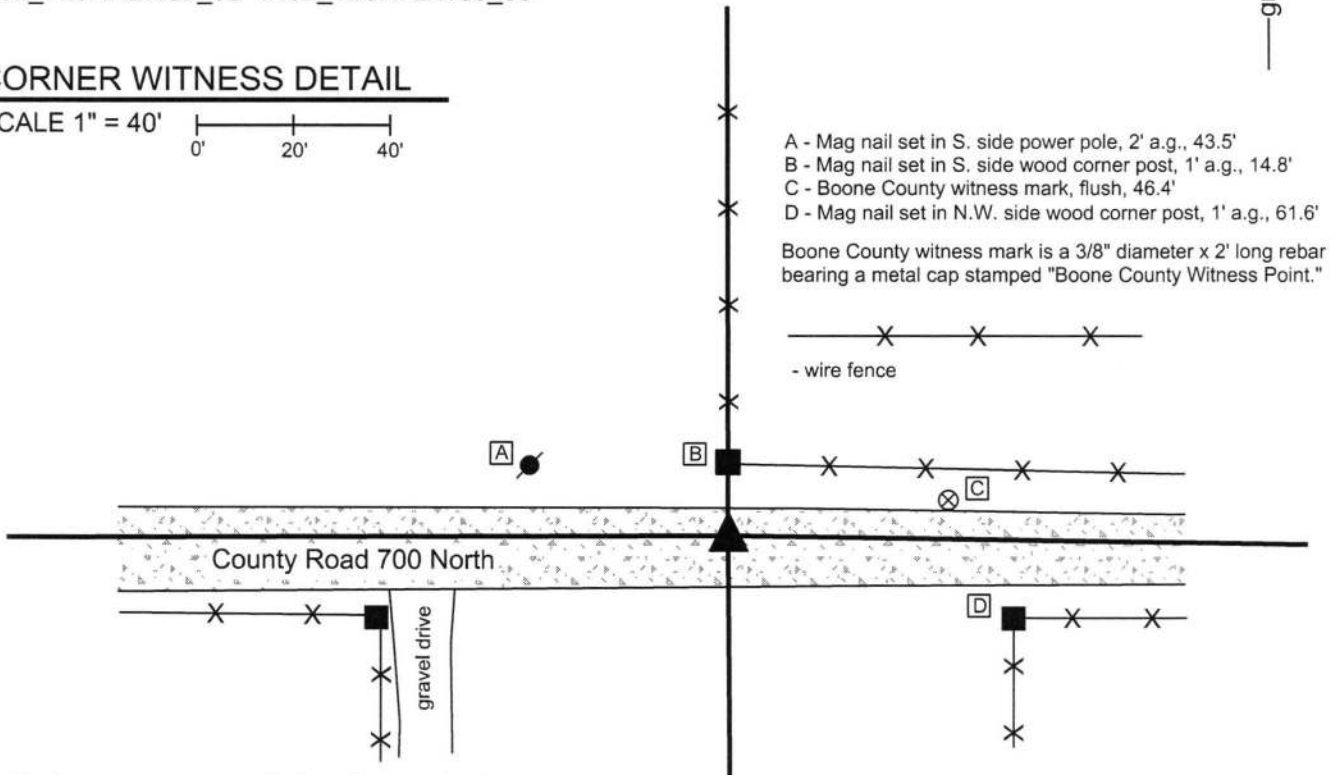
Type of monument: Harrison, 4" disk 'Section Corner'
Depth: Six inches below adjacent gravel road surface

Indiana tie card references:
IN02_T20NR2W29_80 IN02_T20NR2W28_72
IN02_T20NR2W32_08 IN02_T20NR2W33_00



CORNER WITNESS DETAIL

SCALE 1" = 40'
0' 20' 40'



A - Mag nail set in S. side power pole, 2' a.g., 43.5'
B - Mag nail set in S. side wood corner post, 1' a.g., 14.8'
C - Boone County witness mark, flush, 46.4'
D - Mag nail set in N.W. side wood corner post, 1' a.g., 61.6'
Boone County witness mark is a 3/8" diameter x 2' long rebar bearing a metal cap stamped "Boone County Witness Point."

The Harrison monument was set in place of a stone found.
A BCS record dated March 16, 1863 states, with respect to this corner, "Reestablished. Both trees just cut down. Set a Rock 24,12,8 mark across the top. 1 notch on S. corner of Rock, 4 on E corner, 5 on N, and 2 on the West."
No recent tie cards were found referencing this corner.
Excavation was performed at this corner on June 21, 2016. No metal monuments were found prior to excavation. Excavation was centered on a point one rod south of the well established wood corner post at the north edge of the road, being the corner for fences to the north and east. A stone was found at 5 inches deep in the gravel road. The stone was of red granite material and was found standing vertically with a distinct high point. The stone was oriented in the NW-SE direction with the NE and SW sides being flat and vertical. It appeared in the field that the top of the stone had been worn by road grading equipment. Hence, no marks were found on the top of the stone. However, the notches called for in the 1863 description of the monument were found in the form of distinctly visible notches carved into the edges of the rock beginning at approximately 6 inches below the top of the rock. The stone was removed, measured, and found to be 23 inches tall by 12 inches NW-SE by 8 inches wide at the base. The upper part of the rock is approximately 6 inches wide.
The stone was accepted as being the same monument called for in the 1863 records. The stone was removed and replaced with a Harrison monument in the same position.
This corner was originally established as a wood post in 1829.



Kenneth E. Hedge
Kenneth E. Hedge, County Surveyor

James S. Swift
James S. Swift, IN LS 20200054
March 23, 2017

Sugar Creek TWP

Section 29 T20N, R2W	Section 28 T20N, R2W
Section 32 T20N, R2W	Section 33 T20N, R2W

PHOTOGRAPHIC DOCUMENTATION

Date of photography: 7/5/2016

View from above and west, showing the west side of the stone and the notches on the NW and SW edges of the stone.



View of the stone from above and south.



View of the stone and the post on the north side of County Road 700 North.



View looking across the stone and east along County Road 700 North



For details and documentation, refer to related sheet "Section Corner Record."

SECTION CORNER RECORD

BOONE COUNTY SURVEYOR'S OFFICE

NW 700-1050

State Plane grid coordinates NAD83 (2011):
 North: 1782730.51 East: 3069236.52 (U.S. survey feet)

Type of monument: Harrison, 4" disk 'Section Corner'
 Depth: Six inches below adjacent gravel road surface

Indiana tie card references:

IN02_T20NR2W29_76
 IN02_T20NR2W32_04

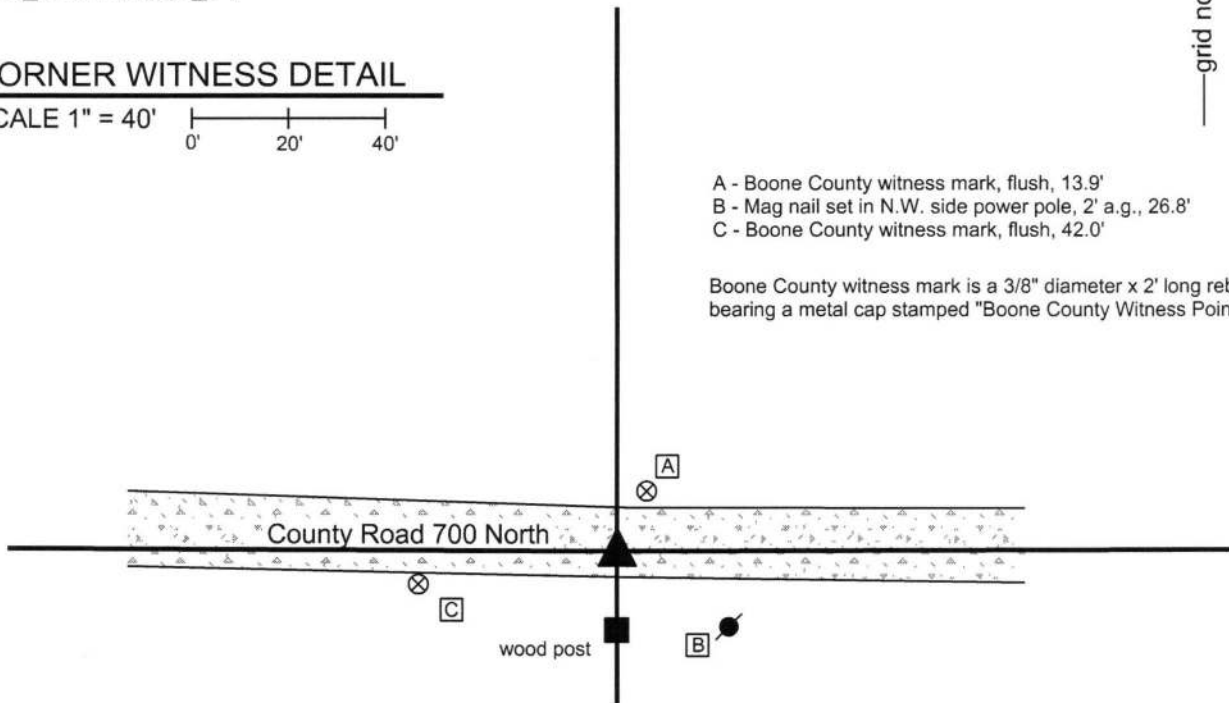


CORNER WITNESS DETAIL

SCALE 1" = 40'

- A - Boone County witness mark, flush, 13.9'
- B - Mag nail set in N.W. side power pole, 2' a.g., 26.8'
- C - Boone County witness mark, flush, 42.0'

Boone County witness mark is a 3/8" diameter x 2' long rebar bearing a metal cap stamped "Boone County Witness Point."



The Harrison monument was set in place of a stone found.

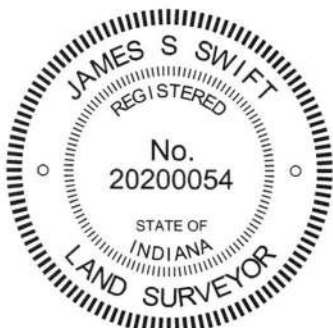
A BCS record dated June 27, 1866 states, with respect to this corner, "Reestablished from one tree." A subsequent record dated August 30, 1880 states, "Reestablished from Elm. Oak stump bears S50W 104 lks instead of S58W as per record. Set Rock 33,17,12 + on top."

A BCS tie card dated October 6, 1971 states "No Stone - Set RRR."

This corner was excavated on June 27, 2016. Prior to excavation, an iron rod was found at 3 inches below grade. Excavation revealed the stone described in the 1880 record at 4 inches deep. The maximum dimensions of the stone were found to match the dimensions described in the 1880 record. An etched "+" mark was clearly visible on the top of the stone. The stone was accepted as being the same monument set in 1880 and was held as marking the corner. The stone was removed and a Harrison monument was set in the same horizontal position of the etched mark on the top of the stone, as originally found. The iron rod, also removed during excavation, had been situated slightly east of the stone, specifically 0.3 foot south and 0.7 foot east of the mark on the stone.

The 1971 record calls for a railroad rail but none was found. Given the minimal depth of the roadbed material, it is likely that the rail was previously disturbed and removed by road grading equipment.

This corner was originally established as a wood post in 1829.



Kenneth E. Hedge
 Kenneth E. Hedge, County Surveyor

James S. Swift
 James S. Swift, IN LS 20200054
 March 23, 2017

Sugar Creek Township

Section 29
 T20N, R2W

Section 32
 T20N, R2W

PHOTOGRAPHIC DOCUMENTATION

Date of photography: June 27, 2016

The stone as originally found, showing the etched mark on the top of the stone.



The stone being lifted directly out of the ground, showing the vertical dimension of the stone.



View looking across the stone to the wood end post on the south side of C.R. 700 North.



View from the east, looking across the stone and west along C.R. 700 North



For details and documentation, refer to related sheet "Section Corner Record."