

SECTION CORNER RECORD

BOONE COUNTY SURVEYOR'S OFFICE

NE 650-800

State Plane grid coordinates NAD83 (CORS96):

North: 1780956.98 East: 3166764.11 (U.S. survey feet)

Type of monument: Harrison, 4" disk 'Section Corner'

Depth: six inches below adjacent gravel road surface

Indiana tie card references:

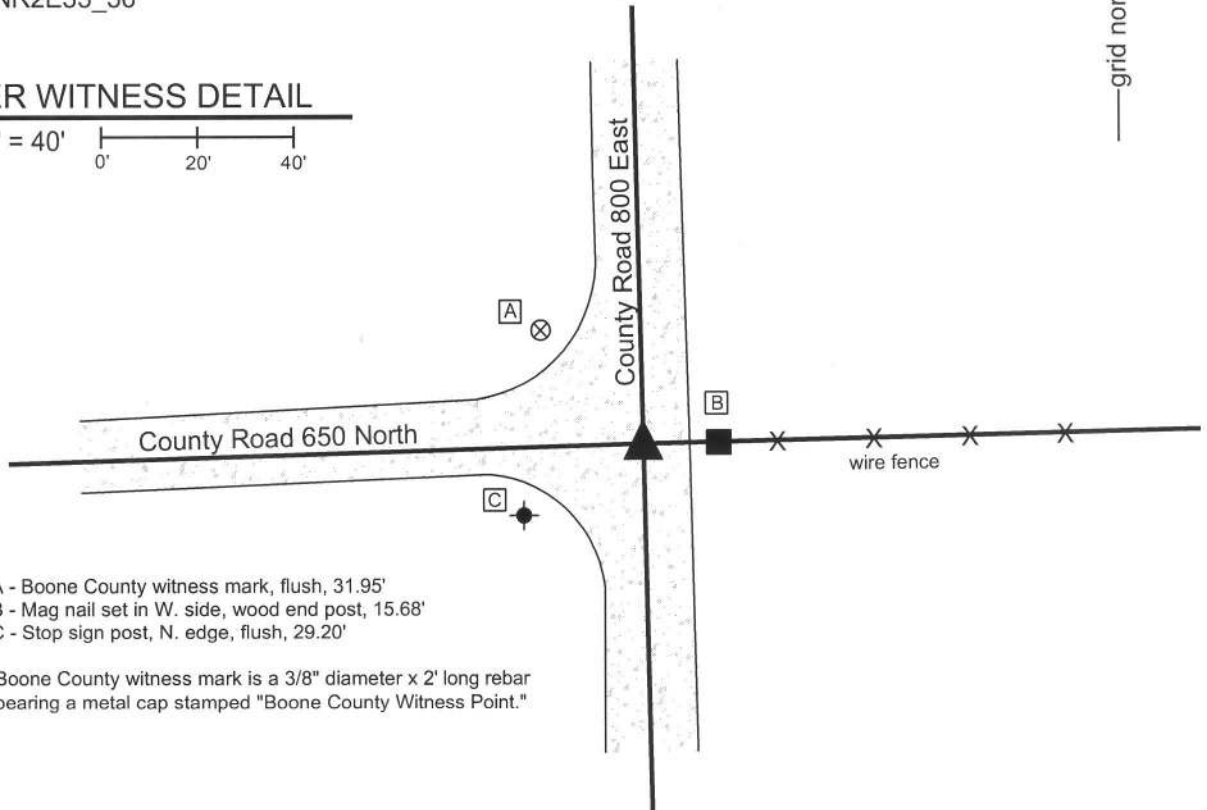
IN02_T20NR2E32_44

IN02_T20NR2E33_36



CORNER WITNESS DETAIL

SCALE 1" = 40'



- A - Boone County witness mark, flush, 31.95'
- B - Mag nail set in W. side, wood end post, 15.68'
- C - Stop sign post, N. edge, flush, 29.20'

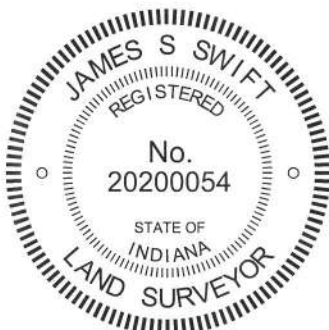
Boone County witness mark is a 3/8" diameter x 2' long rebar bearing a metal cap stamped "Boone County Witness Point."

The Harrison monument was set in place of a rebar found.

A BCS record of January 19, 1859 states "Reestablished from stumps of root of both trees." The record does not mention what monument may have been set at the corner. A BCS tie card dated October 8, 1974 states "No stone found."

This corner was excavated on July 25, 2013. Prior to excavation a 5/8 inch diameter rebar was found in agreement with the one remaining tie (post to the east) shown on the 1974 tie card. Excavation of an area extending 4 feet west, 3 feet south, 4 feet east and 5 feet north, though cut off at a 45 degree angle across the northeast side of the excavation area, due to the presence of a phone line marked by IUPPS, revealed no further evidence. Excavation extended to the depth of the clay layer below the road at 16 inches deep. The found rebar is in the center of the north-south road, slightly south of the center of the road to the east but in line with the fence to the east. Given the lack of further, contrary evidence and the agreement of the rebar with the 1974 ties and the local evidence of the corner, the rebar was held as marking the corner. The rebar was replaced with a Harrison monument, set in the same position.

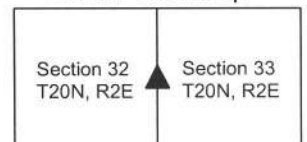
This corner was originally established as a wood post in 1821.



Kenneth E. Hedge
 Kenneth E. Hedge, County Surveyor

James S. Swift
 James S. Swift, IN LS 20200054
 February 5, 2015

Marion Township



SECTION CORNER RECORD

NE 700-750

BOONE COUNTY SURVEYOR'S OFFICE

State Plane grid coordinates NAD83 (2011):
North: 1783517.47 East: 3164047.44 (U.S. survey feet)

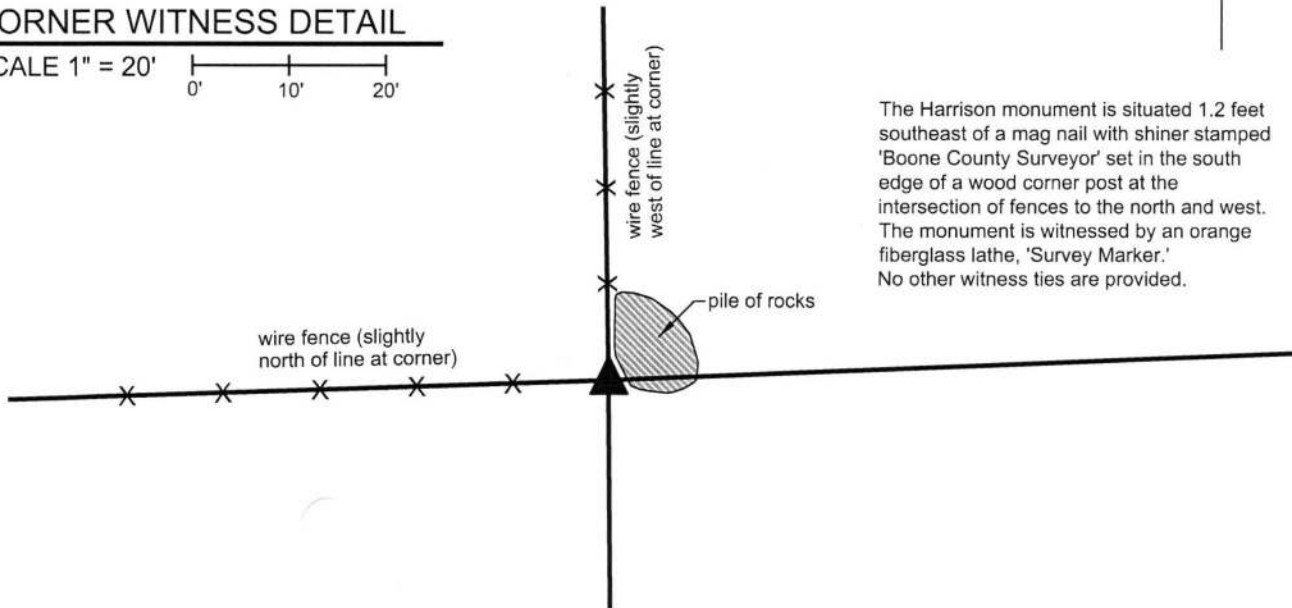
Type of monument: Harrison, 4" disk 'Section Corner'
Depth: Five inches above adjacent ground

Indiana tie card references:
IN02_T20NR2E29_76 IN02_T20NR2E32_04



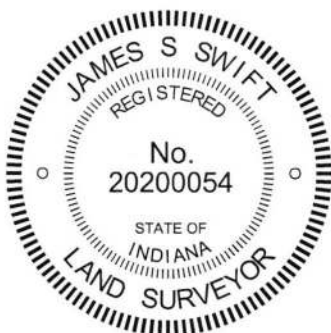
CORNER WITNESS DETAIL

SCALE 1" = 20'
0' 10' 20'



The Harrison monument is situated 1.2 feet southeast of a mag nail with shiner stamped 'Boone County Surveyor' set in the south edge of a wood corner post at the intersection of fences to the north and west. The monument is witnessed by an orange fiberglass lathe, 'Survey Marker.' No other witness ties are provided.

The Harrison monument was set over a stone found. A BCS record of January 21-23, 1869 states, with respect to this corner, "Reestablished from stump of Beech. Set two rocks. 7.6 by 5-1/2 in. marked +. Top Rock 14.8 by 5-1/2 marked +." No recent BCS tie cards were found referencing this corner. Excavation was performed at this corner on March 5, 2018. Prior to excavation, the apparent visible evidence of the corner was a wood corner post at the intersection of fences to the north and west. A substantial pile of rocks was found east and northeast of the post. The rocks were not piled against the post and with the removal of several of the rocks, probing and manual excavation was possible around the post. Extensive probing yielded a lack of rocks in the ground around the post. Though many rocks are present above ground in the immediate vicinity of the post, the only rocks found below 3 inches deep in the ground were found slightly more than one foot to the southeast of the post. A stone which measured 14 inches by 8 inches by 8 inches, matching two dimensions of the top stone mentioned in the 1869 record was found amongst the rocks above the surface. No marks were detected on the rock and it was not considered reliable evidence corner as it was not firmly attached to the ground. The rocks found in the ground to the southeast of the post were in a vertical column. The upper rock was slightly below the surface. Another rock was found directly below that. Both of these stones matched the 7.6 dimension mentioned in the 1869 record but were only approximately 4 inches thick. No marks were detected on them. A third stone which did not match the dimensions of either of the record stones was found below the upper two stones. A fourth stone was found at 30 inches deep. The top of the stone was exposed briefly before the excavation hole began to fill with water. No marks were detected on the rock and it appeared to be larger than what was called for in the 1869 record. It is noted that the standing wood corner post does not appear to be ancient. The vertical column of rocks was accepted as the most reliable evidence of the corner. A Harrison monument was set directly over the top, high point of the stone found at 30 inches deep. It is noted that, due to the excavation of a substantial hole in revealing the stone at 30 inches deep, the aforementioned stone being 14.8.8 inches was incorporated as part of the monument, entirely encased in concrete, to provide stability. This corner was originally established as a wood post in 1822.



Kenneth E. Hedge
Kenneth E. Hedge, County Surveyor

James S. Swift
James S. Swift, IN LS 20200054
March 28, 2018

Marion Township



SECTION CORNER RECORD

NE 700-800

BOONE COUNTY SURVEYOR'S OFFICE

State Plane grid coordinates NAD83 (CORS96):

North: 1783624.03 East: 3166701.64 (U.S. survey feet)

Type of monument: Harrison, 4" disk 'Section Corner'

Depth: six inches below adjacent gravel road surface

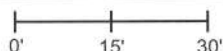
Indiana tie card references:

IN02_T20NR2E29_80 IN02_T20NR2E28_72

IN02_T20NR2E32_08 IN02_T20NR2E33_00

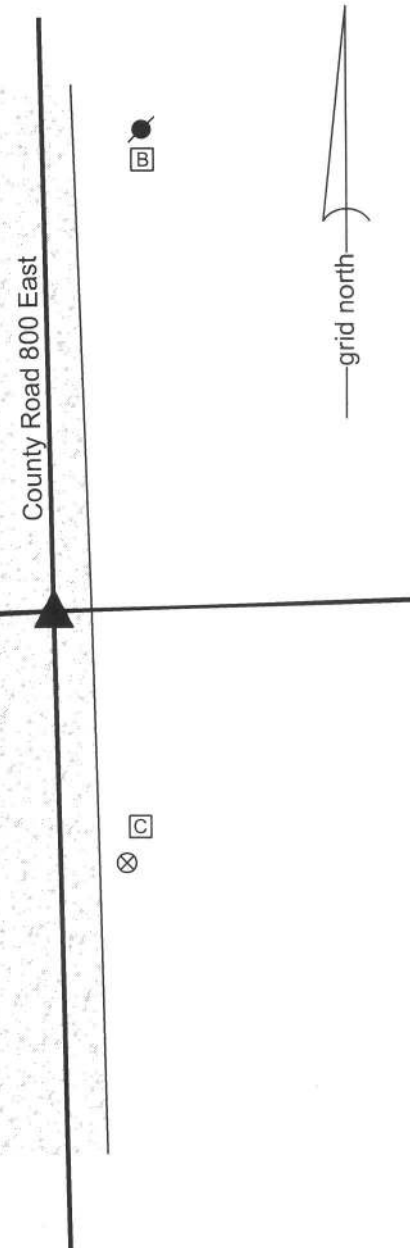
CORNER WITNESS DETAIL

SCALE 1" = 30'



- A - Boone County witness mark, flush, 26.06'
- B - Mag nail set in s. side power pole, 2' a.g., 75.65'
- C - Boone County witness mark, flush, 40.74'

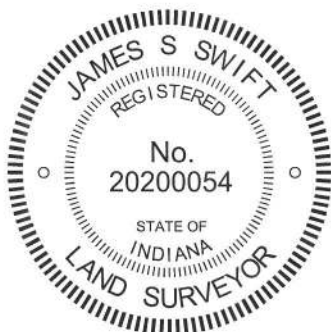
Boone County witness mark is a 3/8" diameter x 2' long rebar bearing a metal cap stamped "Boone County Witness Point."



The harrison monument was set in place of a railroad spike found.

A BCS record of October 4, 1886 states "Reestablished from stump of Beech (S 9° W). Set Rock 19x15x13+, witness 12x13x8+ bears S38°E 44 lks." A BCS tie card dated August 10, 1974 states "small stone found" and graphically demonstrates the corner to be at the midpoint between end posts for the fences to the east and west.

This corner was excavated on August 2, 2013. Prior to excavation a railroad spike was found at 2 inches deep in the gravel road. Excavation of an area extending 3.5 feet N, 5 feet E, 3.5 feet S and 5 feet W revealed no further evidence of the corner. The reference on the 1974 tie card to a "small stone found" does not harmonize with the 1886 call for a stone 19x15x13, which would probably not have been considered "small" by a BCS crew of that, or any, era. It is noted that the railroad spike is not consistent with the type of monument known to be used by BCS crews in 1975. It is also noted that the road bed was found to consist of only 5 inches of material above the clay layer. Typically corner stones are found to be embedded in the clay layer below the road, protruding 2 to 5 inches into the bottom of the road bed. Given the minimal road bed at this corner, it is highly likely that the 1886 record stone was repeatedly hit by road grading equipment and possible removed for that reason. The railroad spike does fit with local evidence in the form of the field division to the west. The spike was near the east side of the road, as were the corner stones found 1/2 and 1 mile north, respectively of this corner. The witness stone called for in the 1886 record was searched for in the form of probing. The expected position of the witness stone falls either in the road side ditch or the adjacent plowed field. Probing revealed no evidence of the witness stone. Given the lack of contrary evidence, the position of the railroad spike was held as marking the corner and the railroad spike was replaced with a harrison monument. This corner was originally established as a wood post in June, 1821.



Kenneth E. Hedge
Kenneth E. Hedge, County Surveyor

James S. Swift
James S. Swift, IN LS 20200054
February 5, 2015

Marion Township

Section 29 T20N, R2E	Section 28 T20N, R2E
Section 32 T20N, R2E	Section 33 T20N, R2E