

SECTION CORNER RECORD

SE 500-050

BOONE COUNTY SURVEYOR'S OFFICE

State Plane grid coordinates NAD83 (CORS96):

North: 1719211.59 East: 3127354.40 (U.S. survey feet)

Type of monument: Harrison, 4" disk 'Section Corner'

Depth: six inches below adjacent gravel road surface

Indiana tie card references:

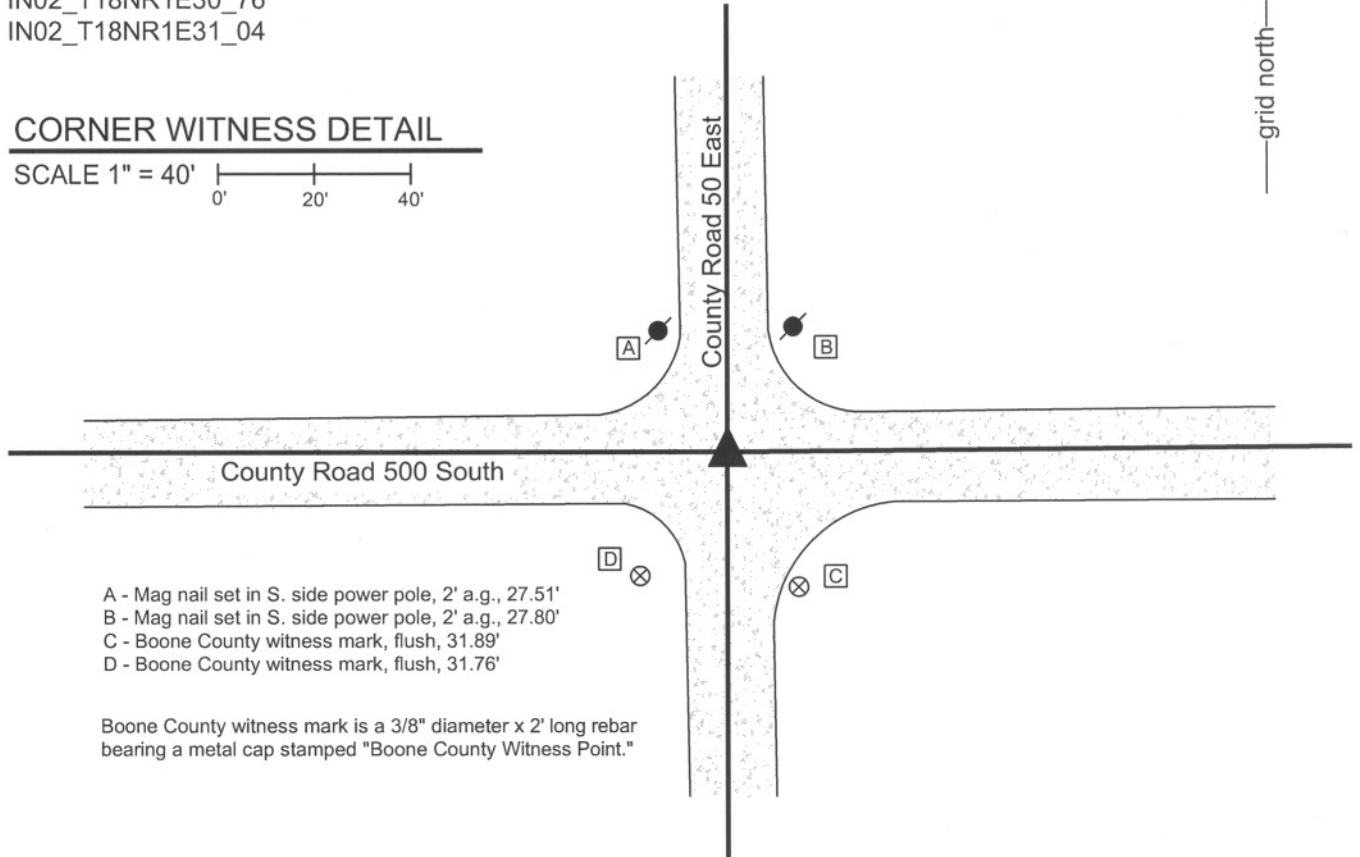
IN02_T18NR1E30_76

IN02_T18NR1E31_04



CORNER WITNESS DETAIL

SCALE 1" = 40'

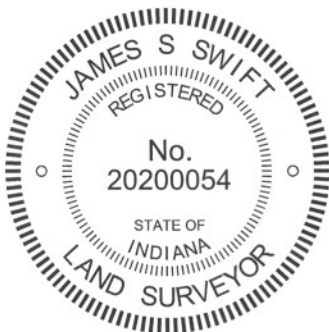


The Harrison monument was set over a stone found.

A BCS record of December 28-29, 1869 states "Rock 16.16.9 marked +." No recent BCS tie cards were found referencing this corner.

This corner was excavated on March 7, 2011. Prior to excavation a 5/8 inch diameter rebar with a red plastic cap, the markings on which were not legible, was found at 3 inches below the surface of the road. Excavation revealed a stone found at 18 inches deep. With 12 inches of the stone exposed, it measured 17 inches N-S by 9 inches E-W with a clearly visible etched "+" mark on the west side. The stone was vertical, embedded in the clay layer below the road, protruding approximately 2 inches out of the clay into the bottom of the road bed. The full height of the stone was not measured, though with 12 inches exposed the stone remained stable in the clay. The stone was accepted as being the record stone from the 1869 record and was held as marking the corner. The stone was left in place and the top 3 inches were encased in concrete. A Harrison monument was set over the top, high point which is coincident with the approximate top, center. The rebar was removed during excavation. The rebar was 1 foot long and had been 1.4 feet south and 0.35 foot west of the point on the stone held as the corner.

This corner was originally established as a wood post in June, 1820.



Kenneth E. Hedge, County Surveyor

James S. Swift, IN LS 20200054
March 1, 2012

Harrison Township

Section 30
T18N, R1E

Section 31
T18N, R1E

PHOTOGRAPHIC DOCUMENTATION

Date of photography: March 7, 2011

View of the stone as first exposed.
A piece of the top of the stone was broken off during excavation. That piece is visible in this photo but is missing in the photo below.



View of the stone from above and west showing the etched mark on the west side of the stone.



View from the south, looking across the stone and north along County Road 50 East.



View from the west, looking across the stone and east along County Road 500 South.



For details and documentation, refer to related sheet "Section Corner Record."

SECTION CORNER RECORD

BOONE COUNTY SURVEYOR'S OFFICE

SE 500-100

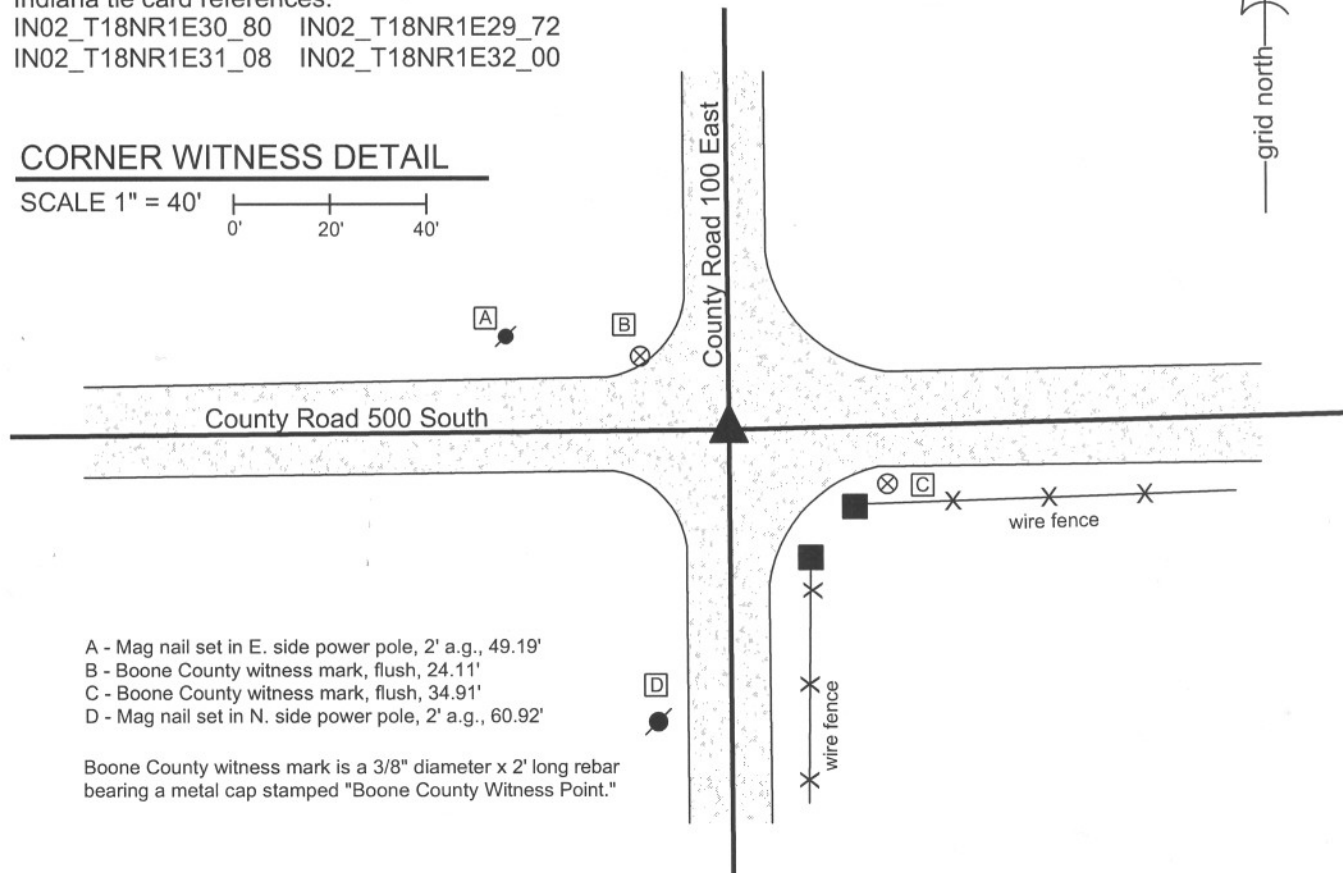
State Plane grid coordinates NAD83 (CORS96):
 North: 1719232.36 East: 3130012.93 (U.S. survey feet)

Type of monument: Harrison, 4" disk 'Section Corner'
 Depth: six inches below adjacent gravel road surface

Indiana tie card references:
 IN02_T18NR1E30_80 IN02_T18NR1E29_72
 IN02_T18NR1E31_08 IN02_T18NR1E32_00

CORNER WITNESS DETAIL

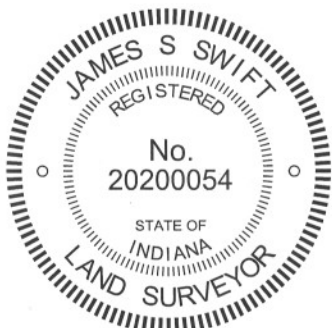
SCALE 1" = 40'



- A - Mag nail set in E. side power pole, 2' a.g., 49.19'
- B - Boone County witness mark, flush, 24.11'
- C - Boone County witness mark, flush, 34.91'
- D - Mag nail set in N. side power pole, 2' a.g., 60.92'

Boone County witness mark is a 3/8" diameter x 2' long rebar bearing a metal cap stamped "Boone County Witness Point."

The Harrison monument was set over a stone found.
 A BCS record of August 19-20, 1867 states "Set Rock 17.12.8." A BCS tie card dated May 5, 1992 shows the corner as an iron pin found.
 This corner was excavated on March 1, 2011. Prior to excavation a 1/2 inch diameter rebar was found at 2 inches deep. Excavation revealed a stone found at 15 inches deep. With the top 11 inches of the stone exposed, it measures approximately 12 inches E-W by 6 inches N-S and remains entirely stable, embedded in the clay layer below the road. The top of the stone protruded approximately 3 inches out of the clay layer in the base of the road bed. No specific marking were found, nor were any noted in the 1867 record. This stone was accepted as being the stone described in the 1867 record and was held as marking the corner. The stone was left in place. The top 10 inches of the stone were encased in concrete and a Harrison monument was set over the top, center of the stone. The rebar, removed during excavation, had been one foot north of the stone.
 This corner was originally established as a wood post in June, 1820.



Kenneth E. Hedge
 Kenneth E. Hedge, County Surveyor

James S. Swift
 James S. Swift, IN LS 20200054
 March 1, 2012

Harrison Township	Perry Township
Section 30 T18N, R1E	Section 29 T18N, R1E
Section 31 T18N, R1E	Section 32 T18N, R1E

PHOTOGRAPHIC DOCUMENTATION

Date of photography: March 7, 2011

View of the stone as first exposed.



View of the stone from above and west.



View from the west, looking across the stone and east along County Road 500 South.



View of the stone from above and north.



View of the stone from above and east.



For details and documentation, refer to related sheet "Section Corner Record."

SECTION CORNER RECORD

SE 550-100

BOONE COUNTY SURVEYOR'S OFFICE

State Plane grid coordinates NAD83 (CORS96):

North: 1716571.04 East: 3130032.53 (U.S. survey feet)

Type of monument: Harrison, 4" disk 'Section Corner'

Depth: six inches below adjacent gravel road surface

Indiana tie card references:

IN02_T18NR1E31_44

IN02_T18NR1E32_36

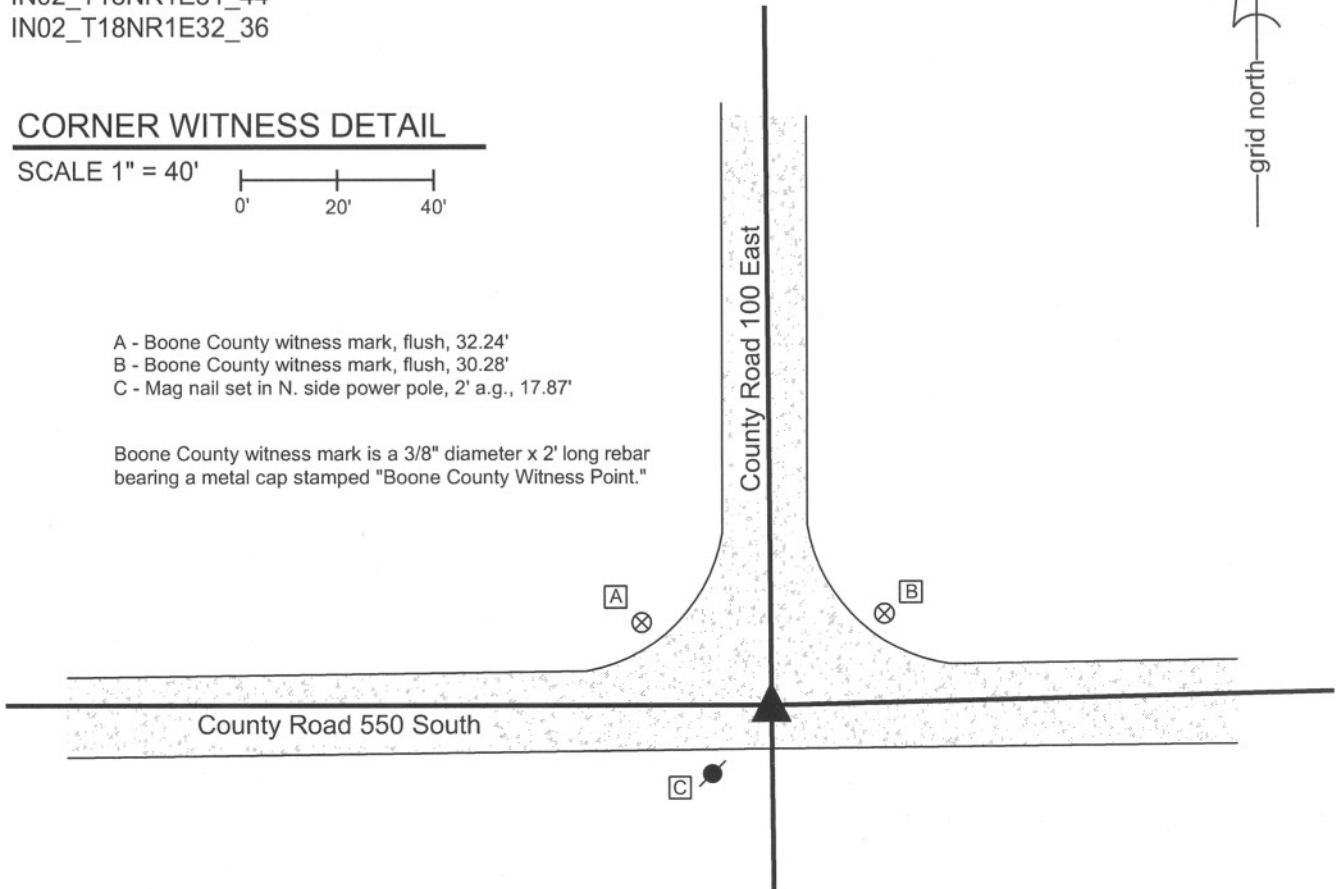
CORNER WITNESS DETAIL

SCALE 1" = 40'



- A - Boone County witness mark, flush, 32.24'
- B - Boone County witness mark, flush, 30.28'
- C - Mag nail set in N. side power pole, 2' a.g., 17.87'

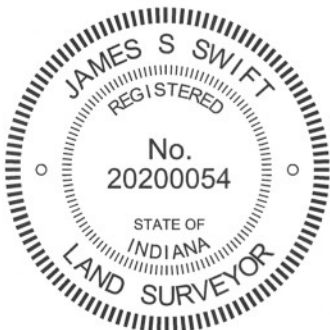
Boone County witness mark is a 3/8" diameter x 2' long rebar bearing a metal cap stamped "Boone County Witness Point."



The harrison monument was set in place of a stone found.

A BCS record of August 19-20, 1867 states "Reestablished from trees. Set Rock 24.9.9." A BCS tie card dated May 5, 1992 shows the corner as an iron pin found. This corner was excavated on March 8, 2011. Prior to excavation, an iron pin was found at 2 inches below grade. Excavation revealed a stone found at 7 inches deep. The stone was vertical, embedded in the clay layer below the road and protruding approximately 3 inches out of the clay into the base of the road bed. The stone was removed, measured and found to be 9 inches N-S by 9 inches E-W by 18 inches tall. No markings were found on the stone, nor were any mentioned in the 1867 record. While the stone was vertical and the two smaller dimensions matched the 1867 record, the larger dimension did not match. The stone, as found, was 18 inches tall, not 24 inches. No explanation is offered for this. No other evidence of the corner was found and the stone was held as marking the corner. The stone was not set back in place and a harrison monument was set in place of the stone, specifically at the position of the top, center of the stone. The found iron pin, removed during excavation, had been 1.6 feet south and 0.7 foot east of the top, center of the stone.

This corner was originally established as a wood post in June, 1820.



Kenneth E. Hedge
 Kenneth E. Hedge, County Surveyor

James S. Swift
 James S. Swift, IN LS 20200054
 March 1, 2012

Harrison Township	Perry Township
Section 31 T18N, R1E	Section 32 T18N, R1E

PHOTOGRAPHIC DOCUMENTATION

Date of photography: March 8, 2011

View of the stone and rebar.



The stone removed from the road bed.



View from the east, looking across the stone and west along County Road 550 South.



View from the south, looking across the stone and north along County Road 100 East.



For details and documentation, refer to related sheet "Section Corner Record."

SECTION CORNER RECORD

SE 600-000

BOONE COUNTY SURVEYOR'S OFFICE

State Plane grid coordinates NAD83 (2011):

North: 1713794.56 East: 3125083.2540 (U.S. survey feet)

Type of monument: Harrison, 4" disk 'Section Corner'

Depth: One inch below adjacent road surface

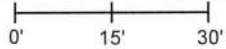
Indiana tie card references:

IN02_T18NR1W36_80 IN02_T18NR1E31_72

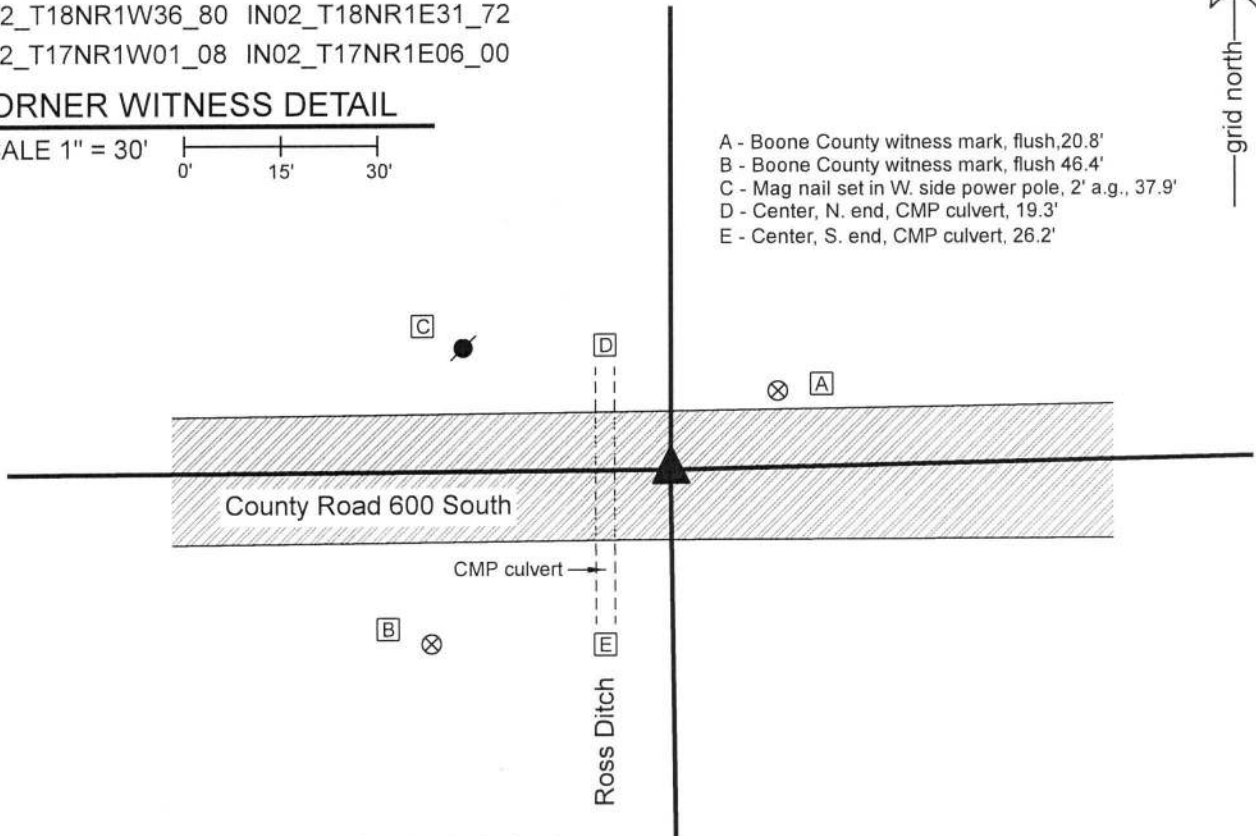
IN02_T17NR1W01_08 IN02_T17NR1E06_00

CORNER WITNESS DETAIL

SCALE 1" = 30'



- A - Boone County witness mark, flush, 20.8'
- B - Boone County witness mark, flush 46.4'
- C - Mag nail set in W. side power pole, 2' a.g., 37.9'
- D - Center, N. end, CMP culvert, 19.3'
- E - Center, S. end, CMP culvert, 26.2'

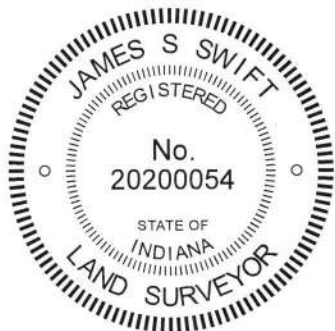


The Harrison monument was set in place of a railroad spike found.

A BCS record dated September 8-12, 1857 (original written as 1837 but writing crossed out. The character of the record fits with 1857, not 1837) states, with respect to this corner, "Reestablished. Set Rock 10x22." A BCS record dated May 8-9, 1911 states, with respect to this corner, "Est. on meridian line in line with H-A, Sec. 31... Rock shaley. 10x10x12. Sharp point up. On N. side gravel road near track." A BCS tie card dated May 19, 1994 shows the corner as a railroad spike in the center of County Road 600 South slightly east of an open ditch.

This corner falls on the east edge of the Ross Ditch. It is apparent that ancient evidence would not remain present, due to previous disruption of the ground associated with excavation along the ditch. The railroad spike called in the 1994 tie card was found undisturbed. The position of the spike matches the remaining two reference ties to the spike. The position of the spike, along the east edge of the ditch, fits very well in alignment with other evidence found along the meridian line. The position of the spike also fits well with evidence of the standard corners to the east (T 18N, R1E) and with evidence of the closing corners to the west (T17N, R1W), though it is noted that excavation has not yet been performed along the line between T18N & T17N, R1W, west of the spike. With no contrary evidence found and general agreement with the positions of surrounding corners, the railroad spike shown on the 1994 tie card was accepted as the best available evidence and was held as marking the corner. The spike was removed a replaced with a Harrison monument in the same position on October 25, 2019.

This corner was originally established as a wood post in 1819.



Kenneth E. Hedge
 Kenneth E. Hedge, County Surveyor

James S. Swift
 James S. Swift, IN LS 20200054
 November 19, 2019

Jefferson Township

Section 36 T18N, R1W	Section 31 T18N, R1E
Section 1 T17N, R1W	Section 6 T17N, R1E

SECTION CORNER RECORD

SE 600-050

BOONE COUNTY SURVEYOR'S OFFICE

State Plane grid coordinates NAD83 (CORS96):

Corner 1: North: 1713846.28 East: 3127386.65 (U.S. survey feet)

Corner 2: North: 1713850.50 East: 3127557.53 (U.S. survey feet)

Types of monument: Corner 1: Harrison, 4" disk 'Section Corner'

Corner 2: 5/8 inch diameter rebar with metal cap stamped 'Boone County Surveyor'

Depth: Flush to one inch below adjacent road surface



CORNER WITNESS DETAIL

SCALE 1" = 50'
0' 25' 50'

Indiana tie card references:

IN02_T18NR1E31_76

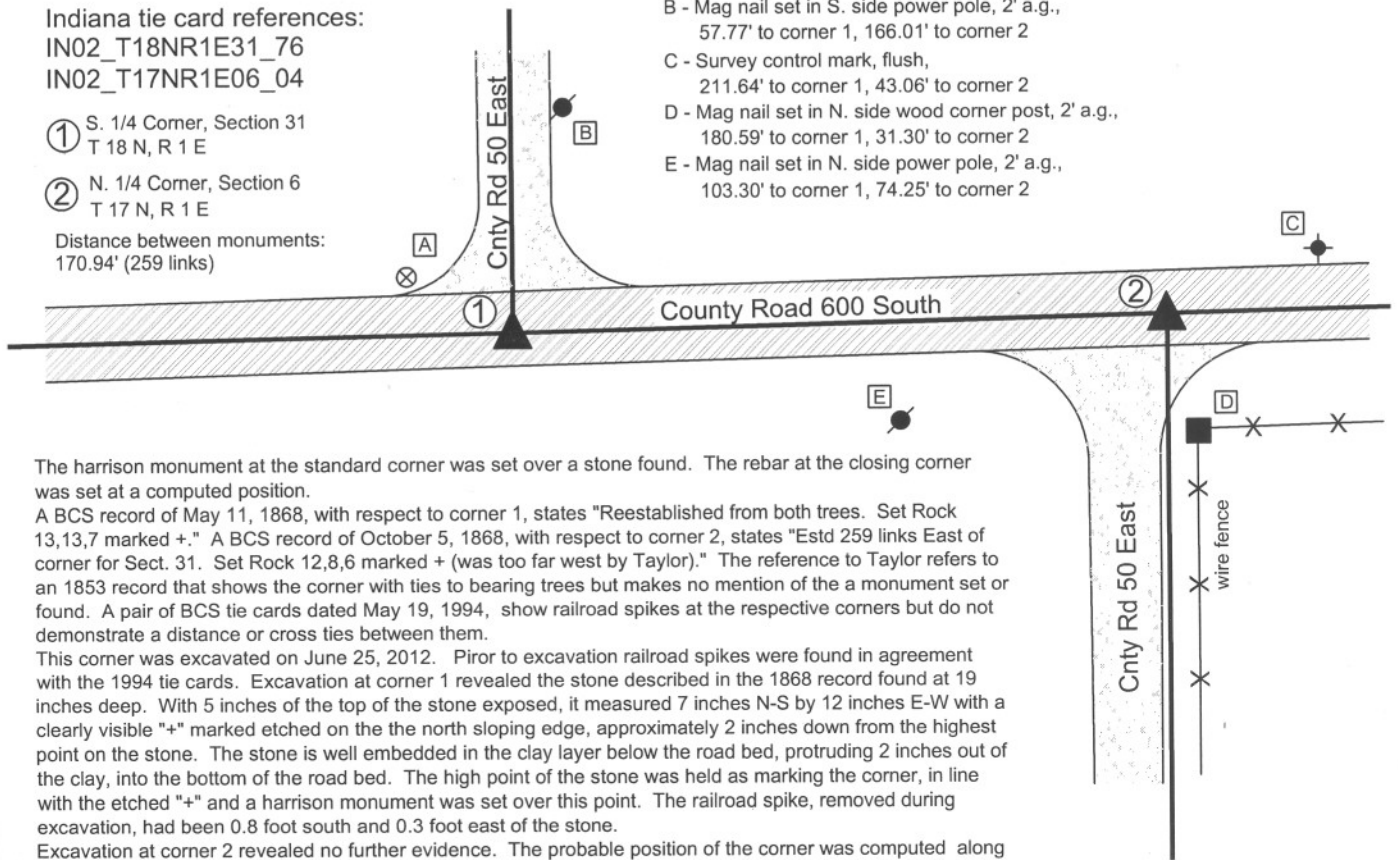
IN02_T17NR1E06_04

① S. 1/4 Corner, Section 31
T 18 N, R 1 E

② N. 1/4 Corner, Section 6
T 17 N, R 1 E

Distance between monuments:
170.94' (259 links)

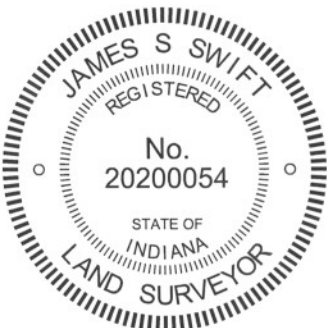
- A - Boone County witness mark, flush, 31.33' to corner 1, 170.93' to corner 2
- B - Mag nail set in S. side power pole, 2' a.g., 57.77' to corner 1, 166.01' to corner 2
- C - Survey control mark, flush, 211.64' to corner 1, 43.06' to corner 2
- D - Mag nail set in N. side wood corner post, 2' a.g., 180.59' to corner 1, 31.30' to corner 2
- E - Mag nail set in N. side power pole, 2' a.g., 103.30' to corner 1, 74.25' to corner 2



The Harrison monument at the standard corner was set over a stone found. The rebar at the closing corner was set at a computed position. A BCS record of May 11, 1868, with respect to corner 1, states "Reestablished from both trees. Set Rock 13,13,7 marked +." A BCS record of October 5, 1868, with respect to corner 2, states "Estd 259 links East of corner for Sect. 31. Set Rock 12,8,6 marked + (was too far west by Taylor)." The reference to Taylor refers to an 1853 record that shows the corner with ties to bearing trees but makes no mention of the a monument set or found. A pair of BCS tie cards dated May 19, 1994, show railroad spikes at the respective corners but do not demonstrate a distance or cross ties between them.

This corner was excavated on June 25, 2012. Prior to excavation railroad spikes were found in agreement with the 1994 tie cards. Excavation at corner 1 revealed the stone described in the 1868 record found at 19 inches deep. With 5 inches of the top of the stone exposed, it measured 7 inches N-S by 12 inches E-W with a clearly visible "+" marked etched on the the north sloping edge, approximately 2 inches down from the highest point on the stone. The stone is well embedded in the clay layer below the road bed, protruding 2 inches out of the clay, into the bottom of the road bed. The high point of the stone was held as marking the corner, in line with the etched "+" and a Harrison monument was set over this point. The railroad spike, removed during excavation, had been 0.8 foot south and 0.3 foot east of the stone.

Excavation at corner 2 revealed no further evidence. The probable position of the corner was computed along the township line as defined by corner 1 and the standard corner to the east at the distance called for in the latter 1868 record. Due to the presence of marked underground utilities in the area, the area of excavation was rotated from cardinal directions. A rectangle being 4 feet NW-SE by 32 inches NE-SW, centered on the probable position of the corner, was excavated to the depth of the clay layer below the road. The stone described in the October, 1868 record was not found. This corner was monumented with a 30 inch length of rebar on November 9, 2012 at the computed position. The railroad spike near this corner, removed during excavation in June 2012, had been 1.0' south and 0.7 foot east of the corner, as computed and monumented.



Kenneth E. Hedge
Kenneth E. Hedge, County Surveyor

James S. Swift
James S. Swift, IN LS 20200054
January 15, 2013

Harrison Township

Section 31
T18N, R1E

Section 6
T17N, R1E

PHOTOGRAPHIC DOCUMENTATION

Date of photography: June 25, 2012

View of the stone as first exposed.



View of the stone after drying briefly in the air.
View from the north.



View from the east, looking across the stone and west along County Road 600 South.



View from the south, looking across the stone and north along County Road 50 East.



For details and documentation, refer to related sheet "Section Corner Record."

SECTION CORNER RECORD

BOONE COUNTY SURVEYOR'S OFFICE

SE 600-100



State Plane grid coordinates NAD83 (CORS96):

Corner 1: North: 1713912.40 East: 3130062.41 (U.S. survey feet)
 Corner 2: North: 1713916.51 East: 3130233.30 (U.S. survey feet)

Type of monument: Harrison, 4" disk 'Section Corner'
 Depth: One inch below adjacent road surface

Indiana tie card references:
 IN02_T18NR1E31_80 IN02_T18NR1E32_72
 IN02_T17NR1E06_08 IN02_T17NR1E05_00

- ① S.E. Corner, Section 31
S.W. Corner, Section 32
T 18 N, R 1 E
- ② N.W. Corner, Section 5
N.E. Corner, Section 6
T 17 N, R 1 E

Distance between monuments = 170.94'
 Original federal closing distance = 259 links (170.94')

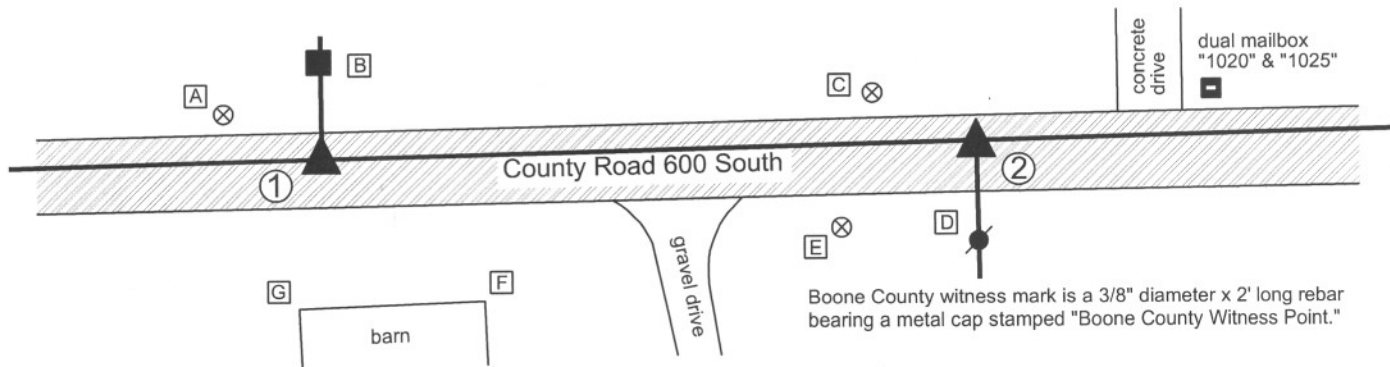
CORNER WITNESS DETAIL

SCALE 1" = 50'
 0' 25' 50'

- A - Boone County witness mark, flush,
28.36' to corner 1, 196.71' to corner 2
- B - Mag nail set in S. side, wood post, 2' a.g.,
22.62' to corner 1, 172.36' to corner 2

- C - Boone County witness mark, flush,
144.93' to corner 1, 29.80' to corner 2
- D - Mag nail set in N. side power pole, 1' a.g.,
172.23' to corner 2, 24.01' to corner 2

- E - Boone County Witness Point, flush,
137.02' to corner 1, 41.82' to corner 2
- F - N.E. corner barn (metal siding),
56.23 to corner 1, 135.37' to corner 2
- G - N.W. corner barn (metal siding),
39.77' to corner 1, 182.25'



Boone County witness mark is a 3/8" diameter x 2' long rebar bearing a metal cap stamped "Boone County Witness Point."

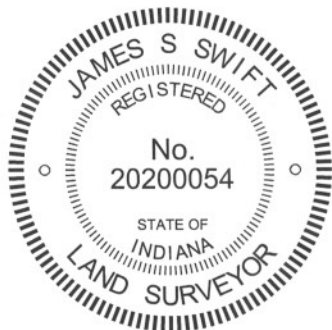
The Harrison monument at corner 1 was set over a stone found. The Harrison monument at corner 2 was set along the township line as determined by corner 1 and the standard corner to the east, immediately north of a found stone and at the original federal closing distance of 259 links.

A BCS record of March 7, 1870 states "Reestablished from stumps. Set Rock 12,8,6 + mark." No specific descriptions of corner 2 were found in the BCS Surveyor's Record beyond the original establishment of the corner at 259 links east of corner 1 on June 8, 1820.

A pair of BCS tie cards dated May 19, 1994 show the respective corners as railroad spikes but show no distance or cross ties between them.

Corner 1 was excavated on July 2, 2012. Prior to excavation a railroad spike was found at 3 inches deep. Excavation revealed the stone described in the 1870 record at 21 inches deep, 3.3 feet north and 0.2 foot east of the railroad spike. The stone, as found, was leaning to the west and appeared to have been disturbed. The entire stone was exposed and stood up to what appeared to be the position it would have held prior to being disturbed. As stood up, the top of the stone protruded slightly into the bottom of the road bed and the stone measured 12 inches tall by 8 inches E-W by 6 inches N-S. Part of an etched chisel mark was visible on top, but the remainder of the mark appeared to have been broken, along with the western edge of the top of the stone. The stone was left in place, as stood up vertical, and the Harrison monument was set over the top, high point and remnants of the etched "+."

Corner 2 was excavated on July 11, 2012. Prior to excavation at this corner a railroad spike was found at 2 inches deep, 3 feet south of the township line defined by the stone at corner 1 and the stone at the standard corner to the east. Excavation revealed a stone found at 12 inches deep, approximately below the found railroad spike. The stone is embedded in the clay layer below the road, protruding 3 inches into the base of the road bed. With 4 inches of the stone exposed, it measured 5 inches E-W by 5 inches N-S. The stone was found to be 7 inches tall along the vertical east edge. The corner was established along the township line, 3 feet north of the stone, at the record closing distance of 259 links, which placed the corner immediately north of the stone. The stone was left in place. A Harrison monument was set at the position of the corner as established along the township line.



Kenneth E. Hedge
 Kenneth E. Hedge, County Surveyor

James S. Swift
 James S. Swift, IN LS 20200054
 January 15, 2013

Harrison Twp	Perry Twp
Section 31 T18N, R1E	Section 32 T18N, R1E
Section 6 T17N, R1E	Section 5 T17N, R1E

PHOTOGRAPHIC DOCUMENTATION

Date of photography: July 2 & July 11, 2012

The stone witnessing the closing corner (corner 2). View from above and east.
Note: this stone was not held as the corner.



Close-up of the stone witnessing corner 2.



The stone at the standard corner (corner 1) and the post on the north side of Cnty Rd 600 South.



The stone at corner 1 as found, apparently leaning towards the west.



The stone at corner 1 stood up in the orientation at which it was likely originally set.



For details and documentation, refer to related sheet "Section Corner Record."