

# SECTION CORNER RECORD

NE 700-050

## BOONE COUNTY SURVEYOR'S OFFICE

State Plane grid coordinates NAD83 (2011):

North: 1782594.62 East: 3127006.89 (U.S. survey feet)

Type of monument: Harrison, 4" disk 'Section Corner'

Depth: Flush with slope on south side, 5" a.g. on north side

Indiana tie card references:

IN02\_T20NR1E30\_76 IN02\_T20NR1E31\_04

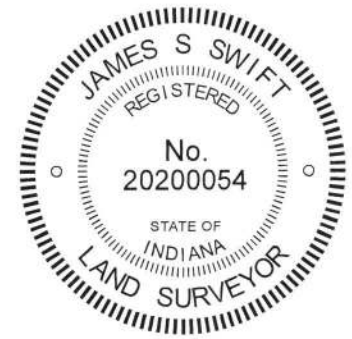
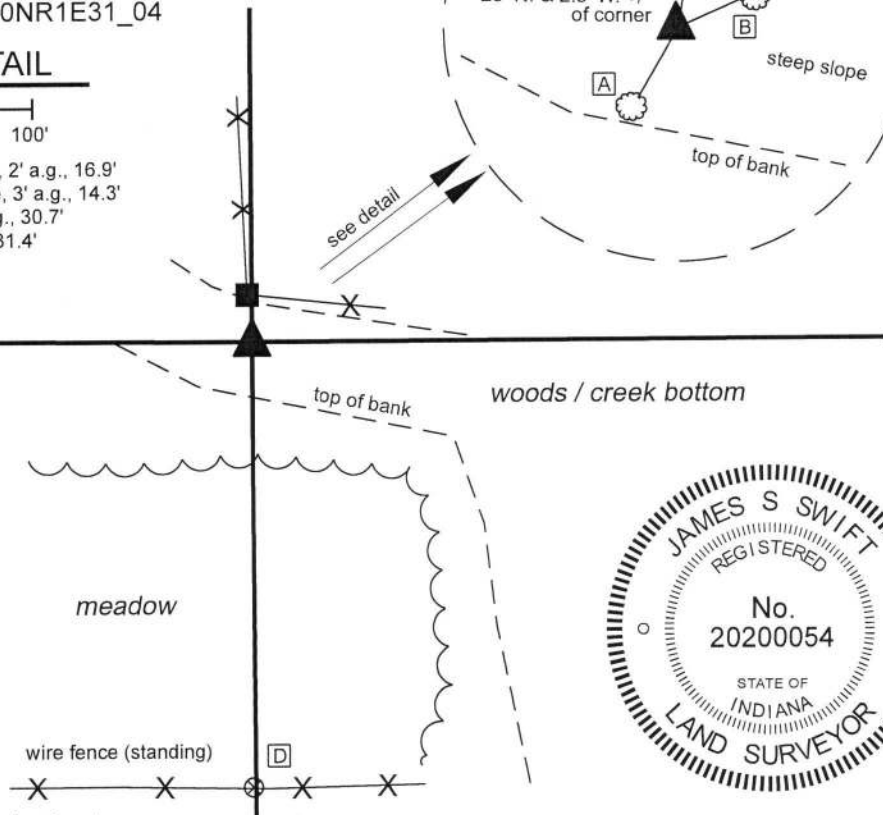
### CORNER WITNESS DETAIL

SCALE 1" = 100'

- A - 1' diameter Sycamore Tree, N.E. Edge, 2' a.g., 16.9'
- B - 4' diameter Sycamore Tree, S.W. Edge, 3' a.g., 14.3'
- C - 2' diameter Walnut Tree, S. Edge, 5'a.g., 30.7'
- D - 5/8" Rebar - Dodge S0288, 0.2' a.g., 231.4'

- wire fence (on ground in valley)

- edge of woods and meadow



The Harrison monument was set in place of a rebar found.

No specific descriptions of this corner were found in the BCS Surveyor's Record beyond the original establishment of the corner as a wood post in 1822. The corner is shown as being established but not monumented on a survey by Jerry L. Carter, LS #S0350, Anderson and Associates Land Surveyors Job #040303, dated April 1, 2004. The same apparent position is shown as being monumented by a capped rebar on a survey by Jonathon E. Hause, LS 20600040 on a survey dated October 11, 2011 and recorded in Survey Book 13, page 53 in the Office of the Boone County Recorder. Both surveys demonstrate that this position was established at a double distance prolongation of a line from a nail held as marking the center of section 30 through a headpost found 1/4 mile south thereof. Both surveys show the position to be south and east of a wood corner post found. This corner was investigated March, 2019. A rebar bearing a blue cap stamped 'Hause PLS20600040' was found at the position shown on the aforementioned Hause survey. The wood corner post was found nearby, on the ground, north and west of the corner position, as demonstrated on the surveys. It is noted that the corner position shown on the Carter and Hause surveys falls on a steep slope and that the post and fence bearing east from it are along the bottom of slope of the steep bank, indicating that they were installed in that location for practical reasons of fencing along the bottom of the hill. Hence, the post is not considered reliable evidence of the corner. It is also noted that the section of north south fence (on the ground), though not along the half-mile section line, bears toward the corner position, as monumented by the rebar. The position of the rebar works well with the relative positions of proximate corners and with the closing distance to the range line, 1/2 mile west. It also works reasonably well calls in deeds to the south and east. The descriptions of the land to the west and adjoining strip of land to the south were described from the monumented position per the Carter survey. The description of the Hamstra property to the west (I9604352) appears to be referenced to the corner post. As noted, the post is not considered reliable evidence of the corner and the position established by Carter and held by Hause was accepted as the corner. The rebar was removed and replaced with a Harrison monument in the same position on March 25, 2019.

Clinton Township

Section 30  
T20N, R1E

Section 31  
T20N, R1E

Kenneth E. Hedge, County Surveyor

James S. Swift, IN LS 20200054  
May 22, 2019

# SECTION CORNER RECORD

# NE 750-000

## BOONE COUNTY SURVEYOR'S OFFICE

State Plane grid coordinates NAD83 (2011):

Corner 1: North: 1785207.62 East: 3124770.96 (U.S. survey feet)

Corner 2: North: 1785229.59 East: 3124771.09 (U.S. survey feet)

Type of monument: Harrison, 4" disk 'Section Corner'

Depth: Flush (corner 2) Four inches below adjacent road surface (corner 1)

Indiana tie card references:

IN02\_T20NR1W25\_36 IN02\_T20NR1E30\_44

### CORNER WITNESS DETAIL

SCALE 1" = 50'

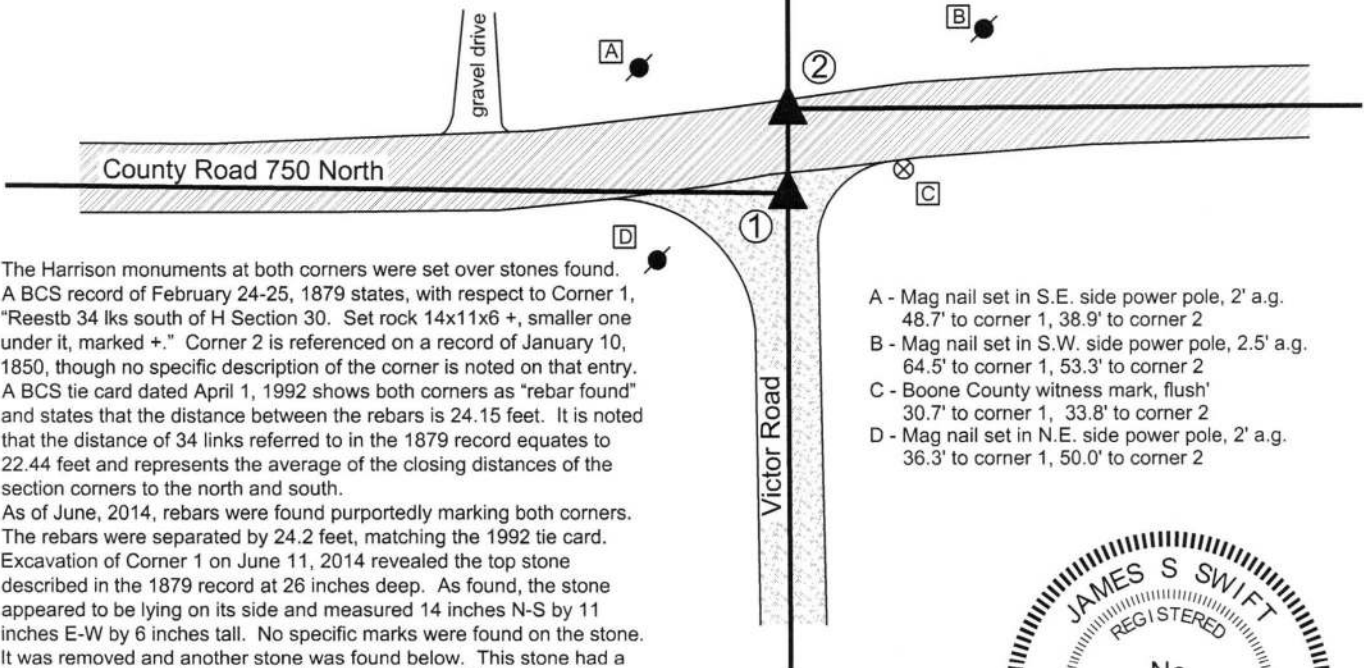


① West Quarter Corner  
Section 30  
T 20N, R 1E

② East Quarter Corner  
Section 25  
T 20N, R 1 W

Distance between corners: 21.98'

Closing distance per 1862 record: 34 links = 22.44'



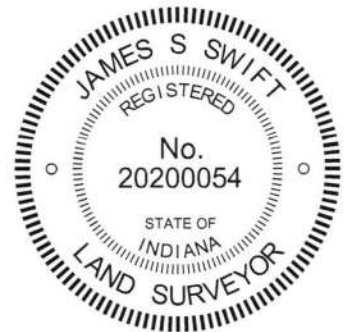
The Harrison monuments at both corners were set over stones found. A BCS record of February 24-25, 1879 states, with respect to Corner 1, "Reestb 34 lks south of H Section 30. Set rock 14x11x6 +, smaller one under it, marked +." Corner 2 is referenced on a record of January 10, 1850, though no specific description of the corner is noted on that entry. A BCS tie card dated April 1, 1992 shows both corners as "rebar found" and states that the distance between the rebars is 24.15 feet. It is noted that the distance of 34 links referred to in the 1879 record equates to 22.44 feet and represents the average of the closing distances of the section corners to the north and south.

As of June, 2014, rebars were found purportedly marking both corners. The rebars were separated by 24.2 feet, matching the 1992 tie card. Excavation of Corner 1 on June 11, 2014 revealed the top stone described in the 1879 record at 26 inches deep. As found, the stone appeared to be lying on its side and measured 14 inches N-S by 11 inches E-W by 6 inches tall. No specific marks were found on the stone. It was removed and another stone was found below. This stone had a distinct "+" mark etched on the north, sloping side of the rock, which measured 7 inches E-W by 8 inches N-S with the top 3 inches exposed. The two stones were accepted as being the same monuments described in the 1879 record. The top stone was removed and a Harrison monument was set directly above the top, high point of the lower stone, slightly south of the etched "+" mark. The rebar, removed during excavation, had been 1.8 feet north and 1.2 feet west of this point.

Excavation of Corner 2 on April 14, 2016 revealed a stone found at 7 inches deep. With 5 inches of the top of the stone exposed, it measured 5 inches N-S by 8 inches E-W. The stone was embedded in the clay layer below the road, protruding approximately 3 inches into the bottom of the road bed. The stone does have a distinct top, high point but no marks were found etched on the stone. The top, high point of the stone was slightly closer to top, high point of the lower stone found at Corner 1 than called for in the 1879 record, though the whole physical rocks were within the same 34 link distance called for in that record. This stone was held as marking Corner 2 and a Harrison Monument was set over the top, high point of the stone. This point falls along or very close to the Second Principal Meridian, as defined by the stone at Corner 1 and a wood post at the standard corner 1/2 mile north. The rebar, removed during excavation, had been 3.0 feet north and 0.6 foot west of the point held as the corner.

Corner 1 was originally established as a wood post in 1819. Corner 2 is not an original federal corner.

- A - Mag nail set in S.E. side power pole, 2' a.g. 48.7' to corner 1, 38.9' to corner 2
- B - Mag nail set in S.W. side power pole, 2.5' a.g. 64.5' to corner 1, 53.3' to corner 2
- C - Boone County witness mark, flush' 30.7' to corner 1, 33.8' to corner 2
- D - Mag nail set in N.E. side power pole, 2' a.g. 36.3' to corner 1, 50.0' to corner 2



*Kenneth E. Hedge*  
Kenneth E. Hedge, County Surveyor

*James S. Swift*  
James S. Swift, IN LS 20200054  
March 23, 2017

Washington Township	Clinton Township
Section 25 T20N, R1W	Section 30 T20N, R1E

# SECTION CORNER RECORD

NE 750-100

## BOONE COUNTY SURVEYOR'S OFFICE

State Plane grid coordinates NAD83 (CORS96):

North: 1785238.54 East: 3129656.75 (U.S. survey feet)

Type of monument: Harrison, 4" disk 'Section Corner'

Depth: One inch below adjacent road surface

Indiana tie card references:

IN02\_T20NR1E29\_36

IN02\_T20NR1E36\_44

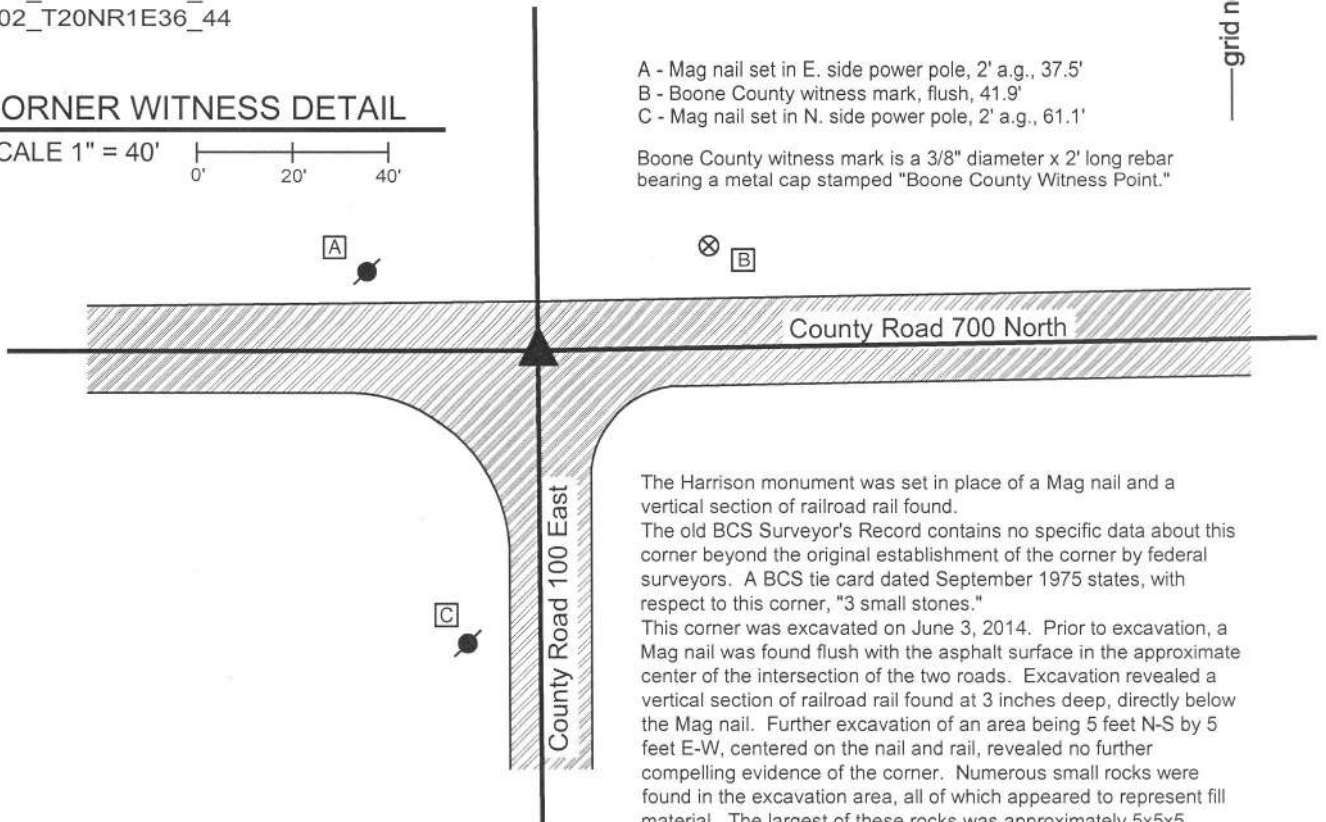


### CORNER WITNESS DETAIL

SCALE 1" = 40'

- A - Mag nail set in E. side power pole, 2' a.g., 37.5'
- B - Boone County witness mark, flush, 41.9'
- C - Mag nail set in N. side power pole, 2' a.g., 61.1'

Boone County witness mark is a 3/8" diameter x 2' long rebar bearing a metal cap stamped "Boone County Witness Point."



The Harrison monument was set in place of a Mag nail and a vertical section of railroad rail found.

The old BCS Surveyor's Record contains no specific data about this corner beyond the original establishment of the corner by federal surveyors. A BCS tie card dated September 1975 states, with respect to this corner, "3 small stones."

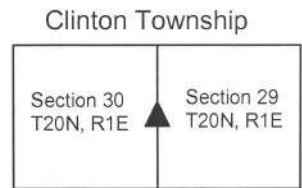
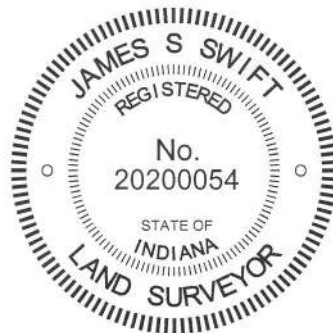
This corner was excavated on June 3, 2014. Prior to excavation, a Mag nail was found flush with the asphalt surface in the approximate center of the intersection of the two roads. Excavation revealed a vertical section of railroad rail found at 3 inches deep, directly below the Mag nail. Further excavation of an area being 5 feet N-S by 5 feet E-W, centered on the nail and rail, revealed no further compelling evidence of the corner. Numerous small rocks were found in the excavation area, all of which appeared to represent fill material. The largest of these rocks was approximately 5x5x5 inches and did not appear to represent evidence of the corner. Excavation was performed to 24 inches deep, several inches into the clay layer below the road.

It is not known whether the "small stones" found in 1970 represented better evidence of the corner than the small stones found in 2014. It is believed that any stones which may have been found in 1970 would have been removed and replaced with the rail, as was a common practice of BCS field crews from that era. Given the lack of contrary evidence and previous acceptance of the railroad rail, the rail was accepted as the best available evidence of the corner. The rail and nail were both removed during excavation and replaced with a Harrison monument set in the same position.

This corner was originally established as a wood post in 1822.

Kenneth E. Hedge, County Surveyor

James S. Swift, IN LS 20200054  
March 27, 2015



# SECTION CORNER RECORD

## BOONE COUNTY SURVEYOR'S OFFICE

NE 800-000

State Plane grid coordinates NAD83 (2011):

Corner 1: North: 1787860.94 East: 3124774.64 (U.S. survey feet)

Corner 2: North: 1787871.50 East: 3124774.61 (U.S. survey feet)

Corner 1: Harrison, 4" disk 'Section Corner', 6" a.g.

Corner 2: 5/8" rebar with metal cap stamped 'Boone County Surveyor' 4" a.g.

Indiana tie card references:

IN02\_T20NR1W24\_80 IN02\_T20NR1E19\_72

IN02\_T20NR1W25\_08 IN02\_T20NR1E30\_00

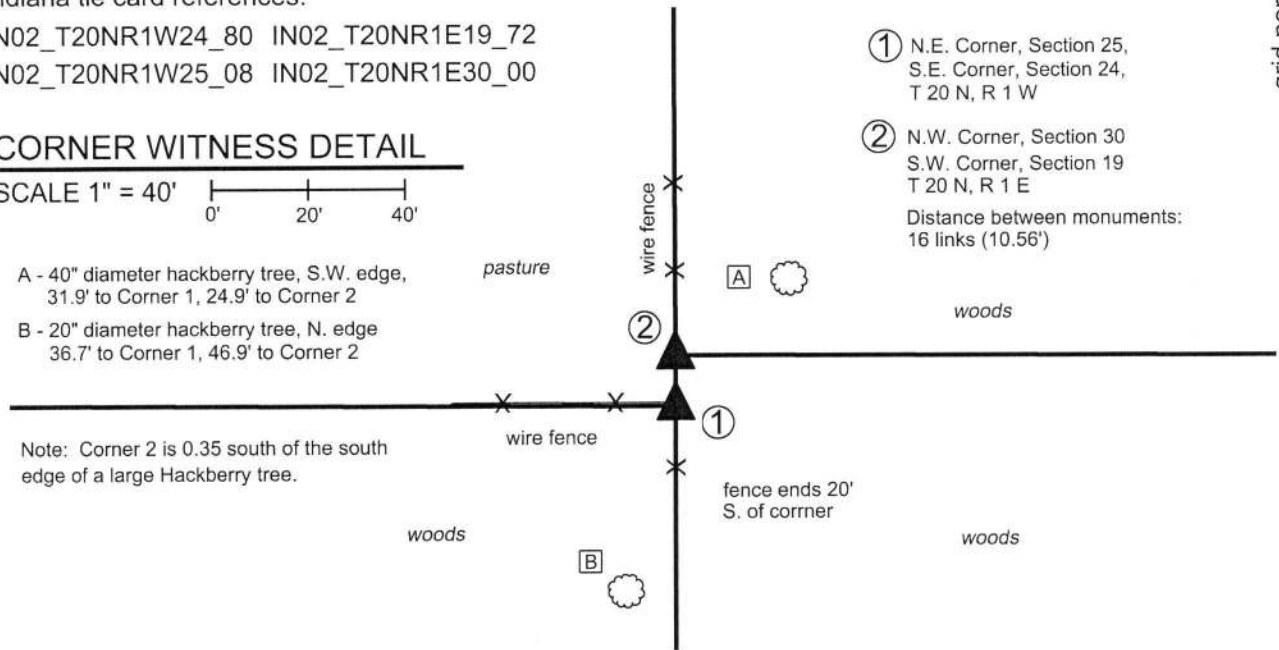
### CORNER WITNESS DETAIL

SCALE 1" = 40'

A - 40" diameter hackberry tree, S.W. edge,  
31.9' to Corner 1, 24.9' to Corner 2

B - 20" diameter hackberry tree, N. edge  
36.7' to Corner 1, 46.9' to Corner 2

Note: Corner 2 is 0.35 south of the south  
edge of a large Hackberry tree.



① N.E. Corner, Section 25,  
S.E. Corner, Section 24,  
T 20 N, R 1 W

② N.W. Corner, Section 30  
S.W. Corner, Section 19  
T 20 N, R 1 E

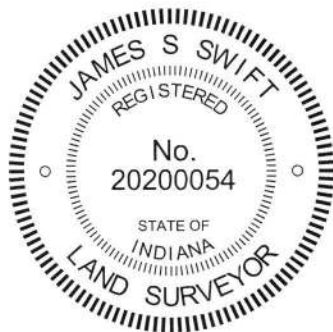
Distance between monuments:  
16 links (10.56')

The Harrison monument was set in place of a stone found.

No specific descriptions of these corners were found in the BCS Surveyor's Record beyond the original establishment of the Corner 1 as a wood post set in 1819 and Corner 2 as a wood post set 16 links north of Corner 1 in 1822. No recent BCS tie cards were found nor were any surveys found in the Boone County Recorder's Office which reference the corners.

This corner was excavated on April 26 and May 8, 2019. Prior to excavation, a wood corner post was found at the intersection of ancient fences to the north, south and west, representing the visible evidence of Corner 1. No evidence of Corner 2 was visible beyond the fence bearing north from Corner 1. As found, the post was no longer attached to the ground with the top part of the post suspended amidst standing fencing and supported by a brace to the west. This portion of the post was separated from the base which remains in the ground. Excavation around the post revealed a stone which bore the characteristics of a purposely set corner stone found at the south edge of the post. The stone was slightly below flush. It was vertical and oriented in cardinal directions with a distinct high point. The stone measured 9 inches tall by 7 inches north-south by 5 inches east-west. No specific marks or etchings were found on the stone. No other stones or hard objects were found around the post. The position of the stone fits reasonably well with the relative positions of proximate corners. The adjacent deed descriptions call for the aliquot lines. No evidence was found to indicate that the stone was not in the position of the corner and the stone was accepted as the best available evidence of the corner. The stone was removed and replaced with a Harrison monument in the same position on May 8, 2019.

The position of Corner 2 was computed at 16 links north of the stone, on the line defined by Corner 1 and the standard corner 1/2 mile north (see BCS Corner NW-850-000). This position falls at the south edge of a large hackberry tree. Probing and minor excavation in this vicinity revealed no further evidence of the corner. As note above, no evidence of occupation was observed bearing east from the vicinity of Corner 2. The computed position was held for this corner and a 36 inch length of 5/8 inch diameter rebar with a metal cap stamped 'Boone County Surveyor' was set at this position on May 8, 2019.



Kenneth E. Hedge, County Surveyor

James S. Swift, IN LS 20200054  
May 29, 2019

Washington Township Clinton Township

Section 24 T20N, R1W	Section 19 T20N, R1E
Section 25 T20N, R1W	Section 30 T20N, R1E