

SECTION CORNER RECORD

NE 100-600

BOONE COUNTY SURVEYOR'S OFFICE

State Plane grid coordinates NAD83 (2011):

Corner 1: North: 1751369.50 East: 3156369.35 (U.S. survey feet)

Corner 2: North: 1751341.82 East: 3156369.75 (U.S. survey feet)

Type of monument: Harrison, 4" disk 'Section Corner'

Depth: Flush with adjacent road surface

Indiana tie card references:

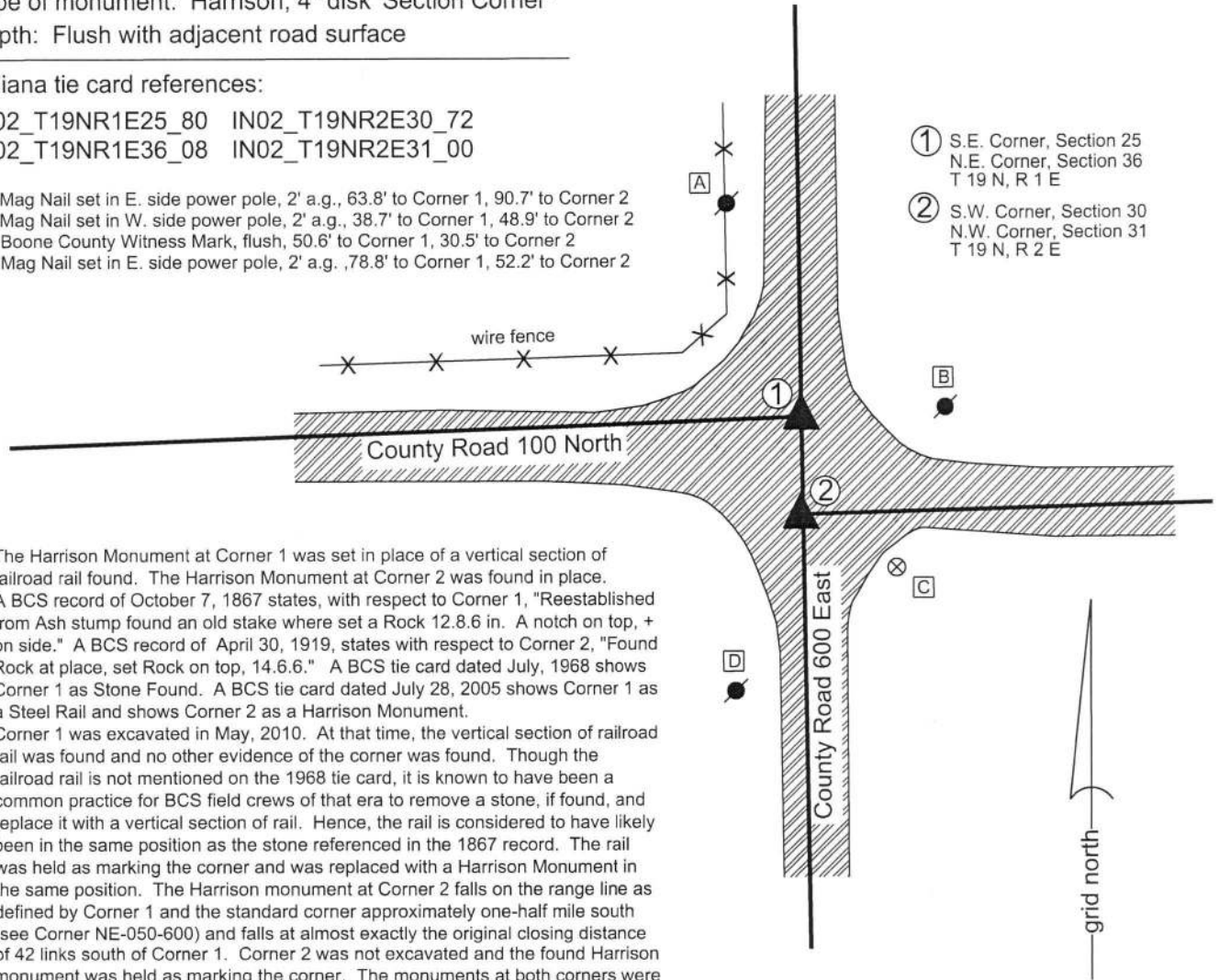
IN02_T19NR1E25_80 IN02_T19NR2E30_72

IN02_T19NR1E36_08 IN02_T19NR2E31_00

- A - Mag Nail set in E. side power pole, 2' a.g., 63.8' to Corner 1, 90.7' to Corner 2
- B - Mag Nail set in W. side power pole, 2' a.g., 38.7' to Corner 1, 48.9' to Corner 2
- C - Boone County Witness Mark, flush, 50.6' to Corner 1, 30.5' to Corner 2
- D - Mag Nail set in E. side power pole, 2' a.g., 78.8' to Corner 1, 52.2' to Corner 2

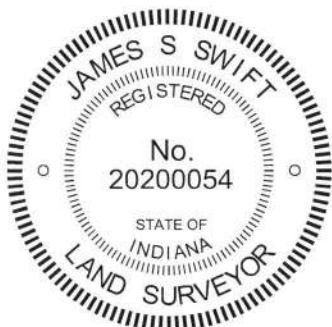
CORNER WITNESS DETAIL

SCALE 1" = 50'



- ① S.E. Corner, Section 25
N.E. Corner, Section 36
T 19 N, R 1 E
- ② S.W. Corner, Section 30
N.W. Corner, Section 31
T 19 N, R 2 E

The Harrison Monument at Corner 1 was set in place of a vertical section of railroad rail found. The Harrison Monument at Corner 2 was found in place. A BCS record of October 7, 1867 states, with respect to Corner 1, "Reestablished from Ash stump found an old stake where set a Rock 12.8.6 in. A notch on top, + on side." A BCS record of April 30, 1919, states with respect to Corner 2, "Found Rock at place, set Rock on top, 14.6.6." A BCS tie card dated July, 1968 shows Corner 1 as Stone Found. A BCS tie card dated July 28, 2005 shows Corner 1 as a Steel Rail and shows Corner 2 as a Harrison Monument. Corner 1 was excavated in May, 2010. At that time, the vertical section of railroad rail was found and no other evidence of the corner was found. Though the railroad rail is not mentioned on the 1968 tie card, it is known to have been a common practice for BCS field crews of that era to remove a stone, if found, and replace it with a vertical section of rail. Hence, the rail is considered to have likely been in the same position as the stone referenced in the 1867 record. The rail was held as marking the corner and was replaced with a Harrison Monument in the same position. The Harrison monument at Corner 2 falls on the range line as defined by Corner 1 and the standard corner approximately one-half mile south (see Corner NE-050-600) and falls at almost exactly the original closing distance of 42 links south of Corner 1. Corner 2 was not excavated and the found Harrison monument was held as marking the corner. The monuments at both corners were raised to the level of the surface of the newly paved roadways in May, 2018. Corner 1 was originally established as a wood post in 1819 and Corner 2 was originally established as a wood post in 1821.



Kenneth E. Hedge
Kenneth E. Hedge, County Surveyor

James S. Swift
James S. Swift, IN LS 20200054
August 1, 2018

Center Township Union Township

Section 25 T19N, R1E	Section 30 T19N, R2E
Section 36 T19N, R1E	Section 31 T19N, R2E

SECTION CORNER RECORD

NE 100-650

BOONE COUNTY SURVEYOR'S OFFICE

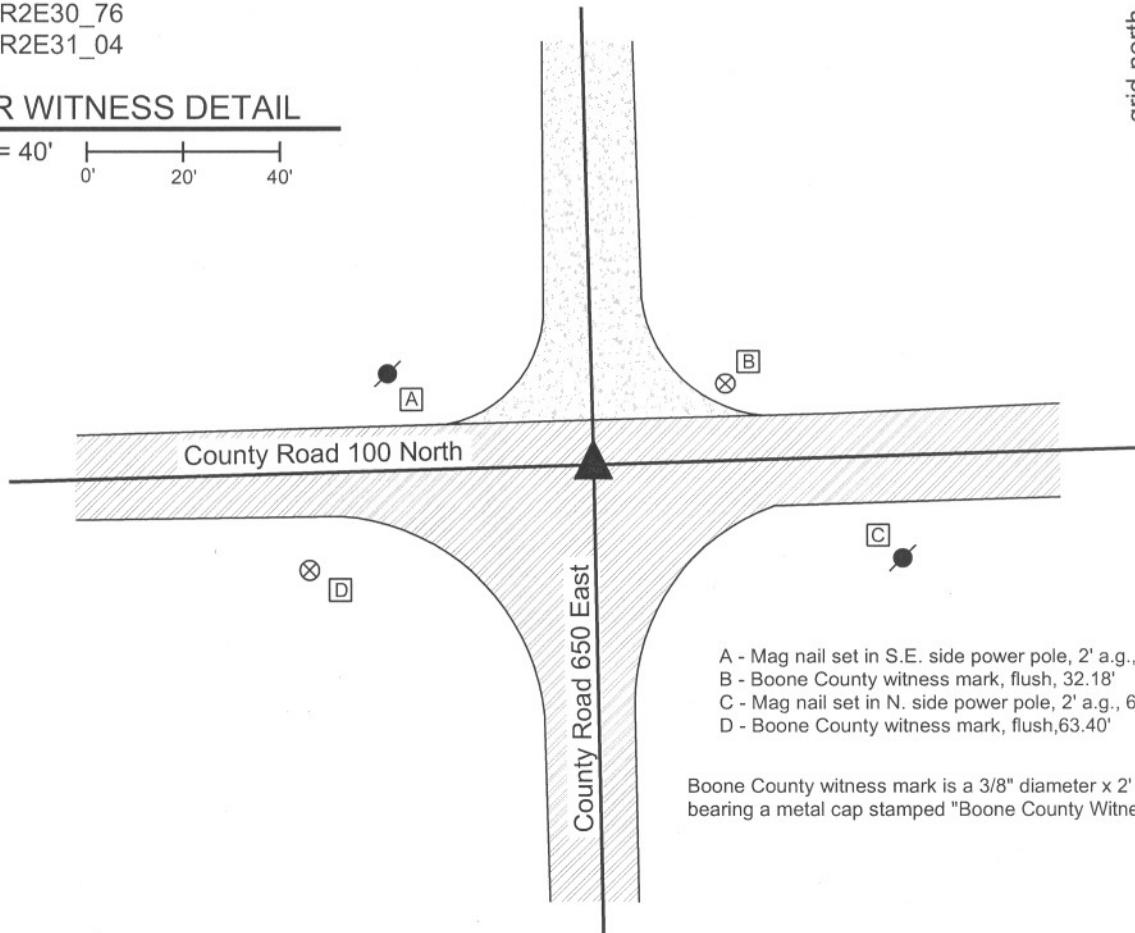
State Plane grid coordinates NAD83 (NSRS 2007):
North: 1751418.61 East: 3159182.58 (U.S. survey feet)

Type of monument: Harrison, 4" disk 'Section Corner'
Depth: One inch below adjacent road surface

Indiana tie card references:
IN02_T19NR2E30_76
IN02_T19NR2E31_04

CORNER WITNESS DETAIL

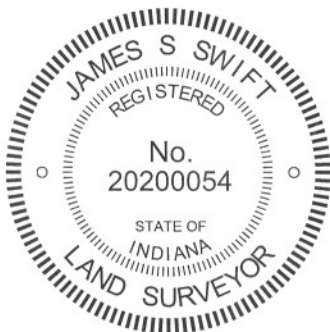
SCALE 1" = 40'
0' 20' 40'



- A - Mag nail set in S.E. side power pole, 2' a.g., 45.65'
- B - Boone County witness mark, flush, 32.18'
- C - Mag nail set in N. side power pole, 2' a.g., 66.62'
- D - Boone County witness mark, flush, 63.40'

Boone County witness mark is a 3/8" diameter x 2' long rebar bearing a metal cap stamped "Boone County Witness Point."

The harrison monument was set in place of a railroad rail found. A BCS tie card dated July 10, 1968 states "no stone." No specific descriptions of this corner were found in the old BCS Surveyor's Record. This corner was excavated on August 26, 2010. Prior to excavation a railroad spike was found at the surface. Excavation revealed a piece railroad rail on end found at 6 inches deep, the top, center of which was 0.2 foot southwest of the railroad spike. The spike and rail were both removed during excavation. Fragments of an oak stake were found in the clay approximately one foot east of the rail at 30 inches deep. No other evidence of the corner was found. The 1968 record does not specifically state that the rail was set at that time, but it is known that it was a common practice for BCS field crews from that era to set railroad rails as monuments. With no source documentation on the fragments of wood found, the rail was held as the best available evidence of the corner and a harrison monument was set in its place. This corner was originally established as a wood stake in July, 1821.



Kenneth E. Hedge
Kenneth E. Hedge, County Surveyor

James S. Swift
James S. Swift, IN LS 20200054

July 25, 2011

Union Township

Section 30
T19N, R2E

Section 31
T19N, R2E

SECTION CORNER RECORD

NE 100-700

BOONE COUNTY SURVEYOR'S OFFICE

State Plane grid coordinates NAD83 (NSRS 2007):
North: 1751495.52 East: 3161826.38 (U.S. survey feet)

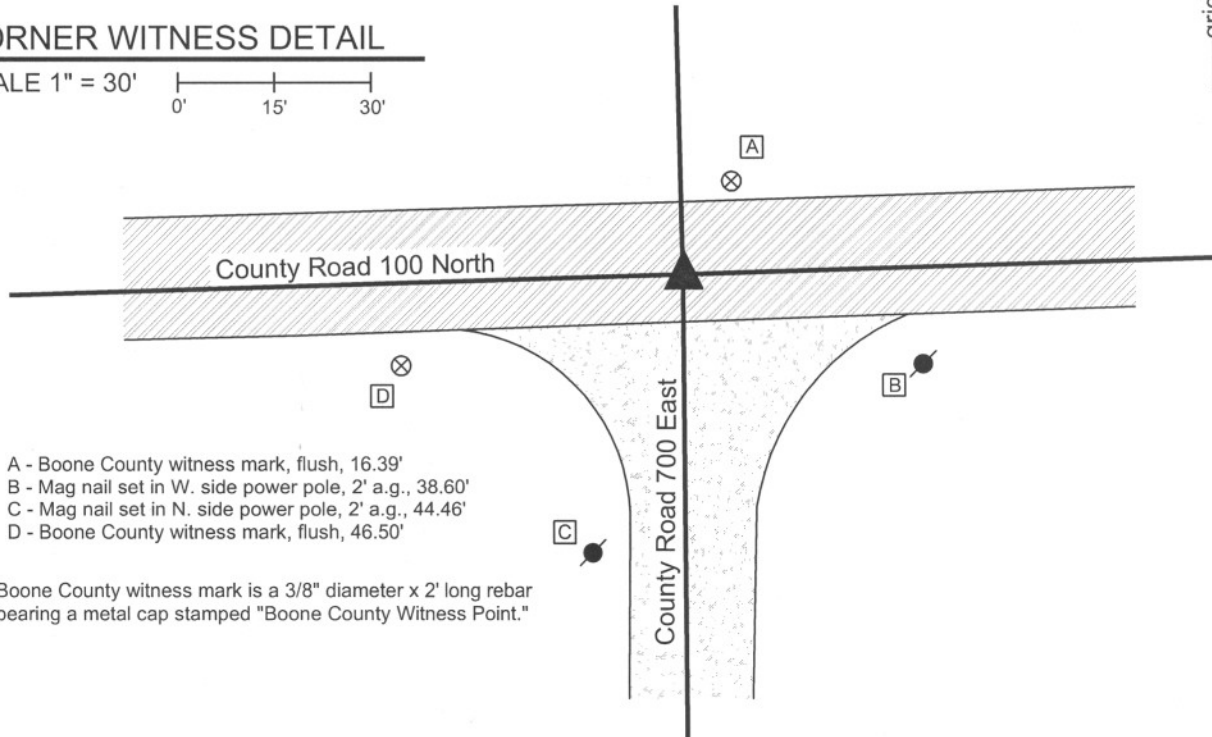
Type of monument: Harrison, 4" disk 'Section Corner'
Depth: One inch below adjacent road surface

Indiana tie card references:
IN02_T19NR2E29_72 IN02_T19NR2E30_80
IN02_T19NR2E31_08 IN02_T19NR2E32_00



CORNER WITNESS DETAIL

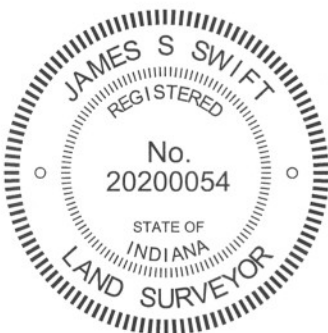
SCALE 1" = 30'
0' 15' 30'



- A - Boone County witness mark, flush, 16.39'
- B - Mag nail set in W. side power pole, 2' a.g., 38.60'
- C - Mag nail set in N. side power pole, 2' a.g., 44.46'
- D - Boone County witness mark, flush, 46.50'

Boone County witness mark is a 3/8" diameter x 2' long rebar bearing a metal cap stamped "Boone County Witness Point."

The harrison monument was set over the top, high point of a stone found.
 A BCS record dated April 15-16, 1862 states "Found a Rock, yet shown correct by stump of one tree." A BCS tie card dated July 8, 1968 states "no stone." This corner was excavated on December 18, 2009. Prior to excavation a railroad spike was visible at the surface. Excavation revealed a railroad rail on end at 4 inches deep, below the railroad spike. A 5/8 inch rebar was found adjacent to the rail on the south side. Further excavation revealed a stone found 18 inches deep, 2.7 feet south and 1.8 feet east of the rail. The stone imesasures 7 inches N-S, 9 inches E-W and is 11 inches tall with no visible markings. The stone is fully embedded in the clay layer below the road with the top of the stone at the bottom of the sub-base layer of the road. The characteristics of this stone, embedded in the clay, horizontal with no specific markings are consistent with other stones which were set in the early 1800s and were found, but not set, by later County Surveyors. The 1862 reference to the stump of one tree is accepted as evidence that the stone was found to be the proper distance from an original bearing tree. The stone was held as the best evidence of the original location of the corner and the harrison monument was set directly over the top, high point of the stone. The railroad rail, railroad spike and rebar were all removed during excavation. The 1968 reference to "no stone" indicates that a stone was searched for but found. It is most likely that the railroad rail was set at that time, after the erroneous determination that other evidence, in the form of a stone, was not present.
 This corner was originally established as a wood post in July, 1821.



Kenneth E. Hedge
Kenneth E. Hedge, County Surveyor

James S. Swift
James S. Swift, IN LS 20200054
July 25, 2011

Union Township	
Section 30 T19N, R2E	Section 29 T19N, R2E
Section 31 T19N, R2E	Section 32 T19N, R2E

PHOTOGRAPHIC DOCUMENTATION
Date of photography: December 18, 2009

Railroad rail and rebar, as found.



The stone exposed.



View of the stone and County Road 100 North, from the west, looking east.



View of the stone and County Road 700 East, from the north, looking south.



For details and documentation, refer to related sheet "Section Corner Record."

SECTION CORNER RECORD

NE 150-600

BOONE COUNTY SURVEYOR'S OFFICE

State Plane grid coordinates NAD83 (2011):

Corner 1: North: 1754031.40 East: 3156340.36 (U.S. survey feet)

Corner 2: North: 1753999.07 East: 3156340.67 (U.S. survey feet)

Type of monument: Harrison, 4" disk 'Section Corner'

Depth: One inch below adjacent road surface

Indiana tie card references:

IN02_T19NR1E25_44 IN02_T19NR2E30_36

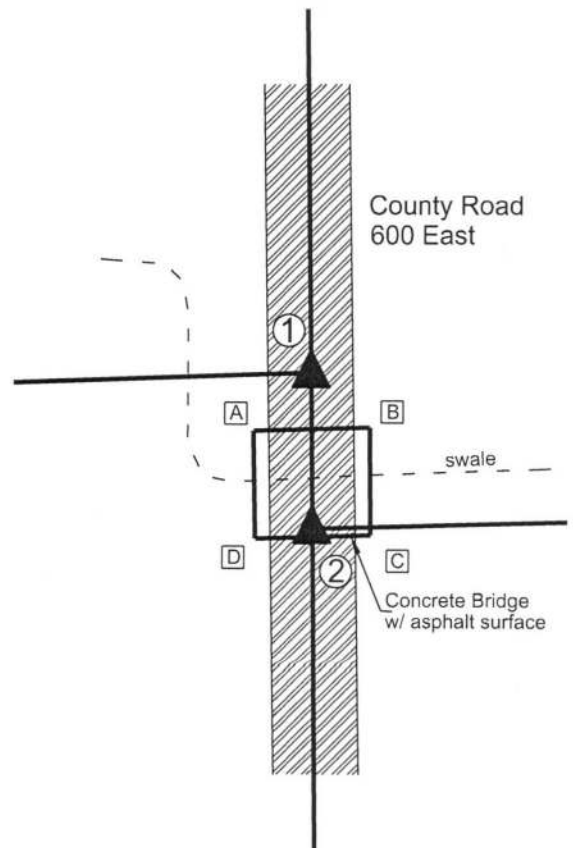
CORNER WITNESS DETAIL

SCALE 1" = 40'

- A - N.W. corner, concrete bridge wall
17.1' to Corner 1, 23.7' to Corner 2
- B - N.E. corner, concrete bridge wall,
16.7' to Corner 1, 24.1' to Corner 2
- C - S.E. corner, concrete bridge wall
35.8' to Corner 1, 12.2' to Corner 2
- C - S.W. corner, concrete bridge wall
36.3' to Corner 1, 12.1' to Corner 2

The Harrison monuments were set in place of found Harrison monuments. A BCS Record of March 23, 1855, attributed to H. Taylor, states, with respect to Corner 2, "A Sassafras post in Prairie. No Tree." A BCS record of March 2, 1871 states, with respect to Corner 1, "Reestablished. Drove stake 49 links north Sasafras stake set by Taylor." A BCS record referenced to 1909 states, with respect to Corner 2, "Set a Rock 20x10x6 20 feet east of corner, which is in ditch." It is noted that the distance of 49 links referenced in the 1871 record represents the average of the original federal closing distances for the sets of corners 1/2 mile north and south. BCS tie cards dated July 28, 2005 show both corners as Harrison monuments with no documentation of source. Significant excavation was not performed at these corners as they fall in an area of substantial fill associated with the road crossing a swale. The positions of the found Harrison monuments fit reasonably well with surrounding corners and are separated by 49 links, as called in the 1871 record. The location of the Corner 2 above the swale correlates well with the 1871 reference to the corner being in the ditch. No contrary evidence was found to call into question the positions of the found Harrisons nor is any local, physical evidence likely to be found, given the situation at the corner with the swale and small bridge. The found monuments were accepted as marking the corners. Both monuments were removed and replaced with identical monuments set in a more stable condition. Corner 1 was originally established in 1819. Corner 2 is not an original federal corner.

- ① East Quarter Corner
Section 25
T 19 N, R 1 E
- ② West Quarter Corner
Section 30
T 19 N, R 2 E



Kenneth E. Hedge
Kenneth E. Hedge, County Surveyor

James S. Swift
James S. Swift, IN LS 20200054
June 12, 2018

Center Township	Union Township
Section 25 T19N, R1E	Section 30 T19N, R2E

SECTION CORNER RECORD

NE 150-700

BOONE COUNTY SURVEYOR'S OFFICE

State Plane grid coordinates NAD83 (2011):

North: 1754146.78 East: 3161764.36 (U.S. survey feet)

Type of monument: Harrison, 4" disk 'Section Corner'

Depth: Three inches above adjacent ground

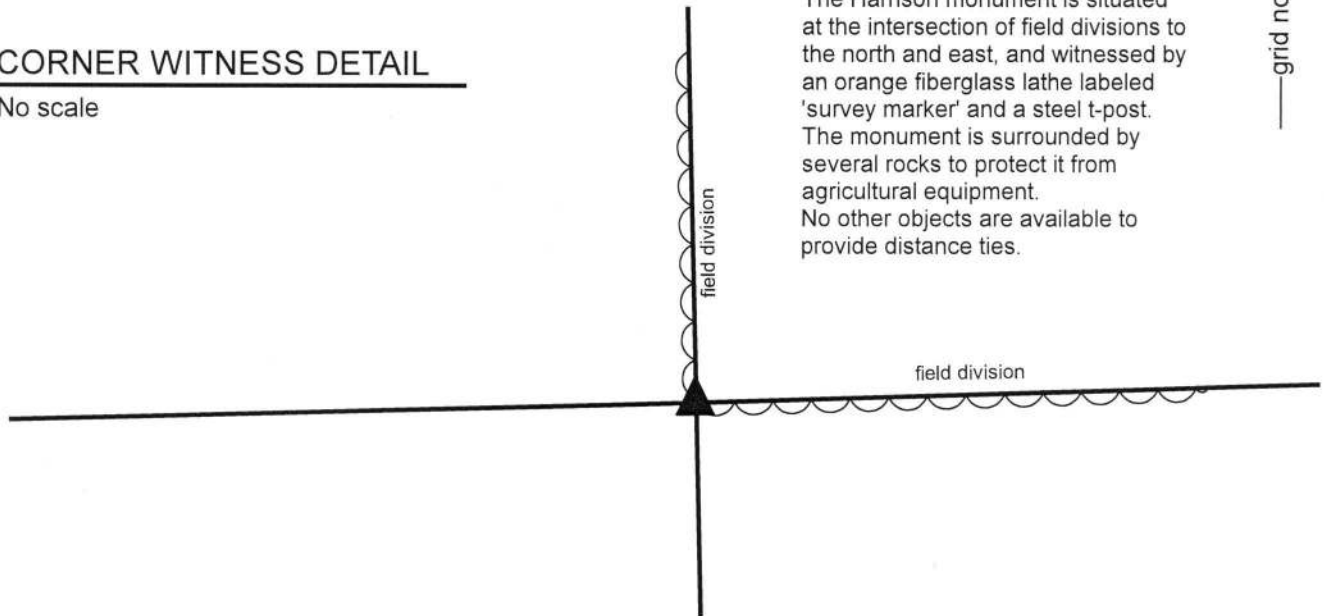
Indiana tie card references:

IN02_T19NR2E29_36 IN02_T19NR2E30_44



CORNER WITNESS DETAIL

No scale



The Harrison monument is situated at the intersection of field divisions to the north and east, and witnessed by an orange fiberglass lathe labeled 'survey marker' and a steel t-post. The monument is surrounded by several rocks to protect it from agricultural equipment. No other objects are available to provide distance ties.

The Harrison monument was set in place of a stone found.

No specific descriptions of this corner were found in the BCS Surveyor's Record, nor were any recent BCS tie cards found referencing this corner. The corner is mentioned as the terminal point for measurements in records of 1849 and 1873, indicating that some object from which to measure was present at those times.

Excavation was performed at this corner on May 7, 2018. During reconnaissance in 2011, a wood post was observed standing. The post did not appear to be ancient, being a round wood post similar to a section of power pole. As of 2018, the post was broken off with the top portion of the post lying on the ground, adjacent to the base of the post which was visible flush with the ground. Excavation around the post revealed several rocks including a notable stone found at the north edge of the post. The stone was at 8 inches deep and measured 12 inches N-S by 12 inches E-W by 8 inches tall. The top of the stone was painted pink, indicating probable previous discovery by a survey crew. No specific marks were observed on the stone. The base of an ancient wood post was found at the north edge of the stone. Hence, it was observed in the field that the found stone was situated between the newer, round post and an older, apparently square post. The stone did not appear to be acting as a brace to either post. The stone, being horizontal and oriented in cardinal directions, fit with the characteristics for other stones found throughout the county for which the records indicate that a monument was already present when the BCS survey crews of the mid 19th century held the corner. The general position of the stone and posts fit well with the relative positions of proximate corners. The stone was accepted as representing the best available evidence of the corner and was held as marking the corner. The stone was removed and replaced with a Harrison monument in the position of the top, center of the rock, as found. The stone, along with several other rocks found nearby, was set, partially embedded in the ground, adjacent to the Harrison to protect the monument from damage by agricultural equipment.

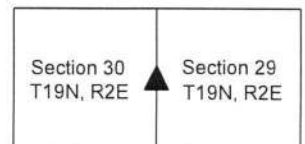
This corner was originally established as a wood post in 1821.



Kenneth E. Hedge
 Kenneth E. Hedge, County Surveyor

James S. Swift
 James S. Swift, IN LS 20200054
 May 16, 2018

Union Township



SECTION CORNER RECORD

BOONE COUNTY SURVEYOR'S OFFICE

NE 200-600

State Plane grid coordinates NAD83 (2011):

Corner 1: North: 1756692.87 East: 3156302.52 (U.S. survey feet)

Corner 2: North: 1756656.10 East: 3156305.08 (U.S. survey feet)

Type of monument: Harrison, 4" disk 'Section Corner'

Depth: Flush with adjacent road surface

Indiana tie card references: IN02_T19NR1E24_80 IN02_T19NR2E19_72
IN02_T19NR1E25_08 IN02_T19NR2E30_00

CORNER WITNESS DETAIL

SCALE 1" = 30'

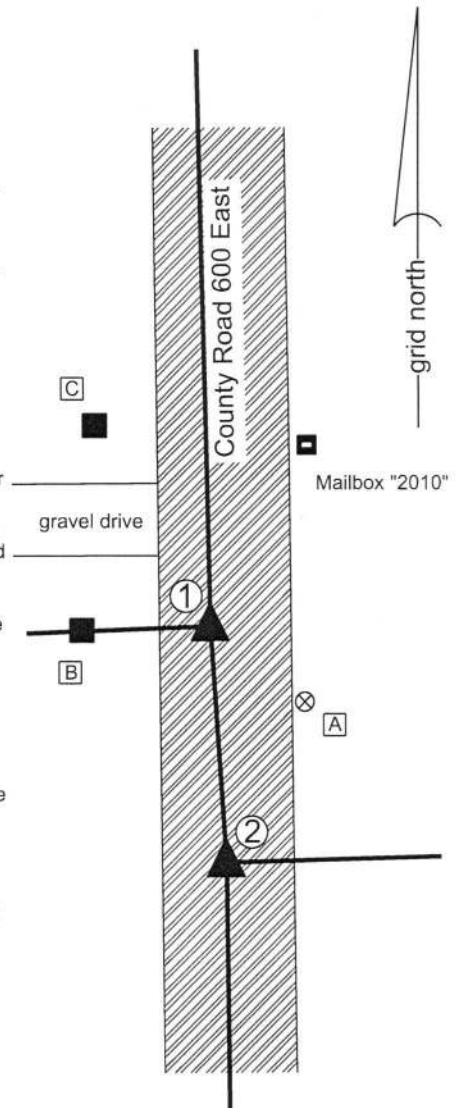
The Harrison Monument at Corner 1 was set over a stone found and the Harrison Monument at Corner 2 was set in place of a stone found and a Harrison Monument found.

A BCS record of November 8, 1871 states, with respect to Corner 2, "Reestab from stump of one tree. Set a Rock 8.5.4 +." A BCS record of March 20, 1873 states, with respect to Corner 1, "Reestablished from Oak tree, set a Rock 18.12.7 +." BCS tie cards of July 28, 2005 show both corners as Harrison monuments with no documentation of source.

Corner 1 was excavated on May 24, 2010. Prior to excavation, a Harrison monument was found at the surface of the road per the 2005 tie card. Excavation revealed the stone described in the 1873 record at 8 inches deep. The stone was found to be vertical, embedded in the clay layer below the road bed and protruding approximately 6 inches into the bottom of the road bed. With the top 12 inches of the stone exposed, it measured 12 inches E-W by 7 inches N-S with a protrusion on the south side which extended the N-S dimension to 8 inches at the protrusion. The north side of the stone was flat and vertical. No specific marks were found. The stone was in line with the fence to the west. The stone was accepted as being the same monument described in the 1873 record and was held as marking the corner. The stone was left in place, the top of the stone was encased in concrete and a Harrison monument was set over the top, center of the stone. The Harrison monument, removed during excavation, had been 0.2 foot north and 2.1 feet east of the top, center of the stone.

Corner 2 was excavated on May 18, 2018. Prior to excavation, the Harrison monument shown on the 2005 tie card as marking the corner was found flush with the surface of the road. Excavation revealed the stone described in the 1871 record found at 18 inches deep, directly below the found Harrison monument. The stone was of a rectangular shape with evidently cut sides. The stone measured 8 inches tall by 6 inches N-S by 3 inches E-W. The stone was fully embedded in the clay layer below the road bed, situated vertically with a distinct high point. An etched "+" mark was found on the sloping top, south side of the stone. The stone was accepted as being the same monument as described in the 1871 record.

It is noted that the stone at Corner 2 falls 2.1 feet east of a straight line connecting the stone found at Corner 1 and the standard corner one-half mile south (see Corner NE 150-600). The standard procedure adhered to by this office is to endeavor to establish closing corners on the range line as defined by the relevant standard corners, if sufficient evidence is available to firmly establish the range line as connecting the standard corners. However, at this set of corners it is clearly evident that the two adjacent corners were monumented in 1871 and 1873 in positions which are not in harmony in the east-west dimension. It is further noted that both corners were perpetuated from older evidence in the form of an original bearing tree and roots of an original bearing tree. It is also noted that the stones found at the respective corners are separated by almost exactly the original closing distance of 56 links. It is observed that any error in the establishment of the corners by radial tie distances from the bearing trees in 1871 and 1873 would likely result in a variation in the distance separation between the corners. Given that the distance between the two corners is close to the original closing distance of 56 links, it appears that perhaps the closing corner was originally established east of the longer range line. If this is the case, it would follow that a jog may have been established in the range line as early as 1821 when the closing corner was originally set. The stones found marking the two corners were both held and Harrison monuments were set above (Corner 1) or in place of (Corner 2) and it is accepted that the line between Ranges 1 East and 2 East jogs between Corner 1 and Corner 2.



- ① S.E. Corner, Section 24
N.E. Corner, Section 25
T 19 N, R 1 E
- ② S.W. Corner, Section 19
N.W. Corner, Section 30
T 19 N, R 2 E

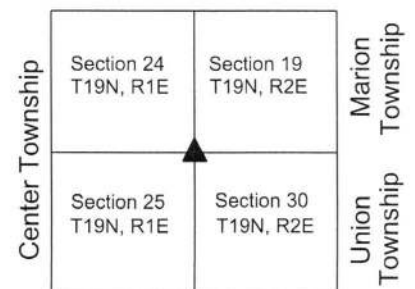
Distance between monuments: 36.86'
Original closing distance: 56 links (37')

- A - Boone County witness mark, flush, 19.0' to Corner 1, 27.9' to Corner 2
- B - Mag Nail set in E. side wood post, 2' a.g. 19.0' to Corner 1, 41.9' to Corner 2
- C - Mag nail set in E. side wood post, 1' a.g. 35.5' to Corner 1, 70.8' to Corner 2



Kenneth E. Hedge
Kenneth E. Hedge, County Surveyor

James S. Swift
James S. Swift, IN LS 20200054
August 1, 2018



SECTION CORNER RECORD

NE 200-650

BOONE COUNTY SURVEYOR'S OFFICE

State Plane grid coordinates NAD83 (2011):

North: 1756731.22 East: 3159051.94 (U.S. survey feet)

Type of monument: Harrison, 4" disk 'Section Corner'

Depth: Three inches above adjacent ground

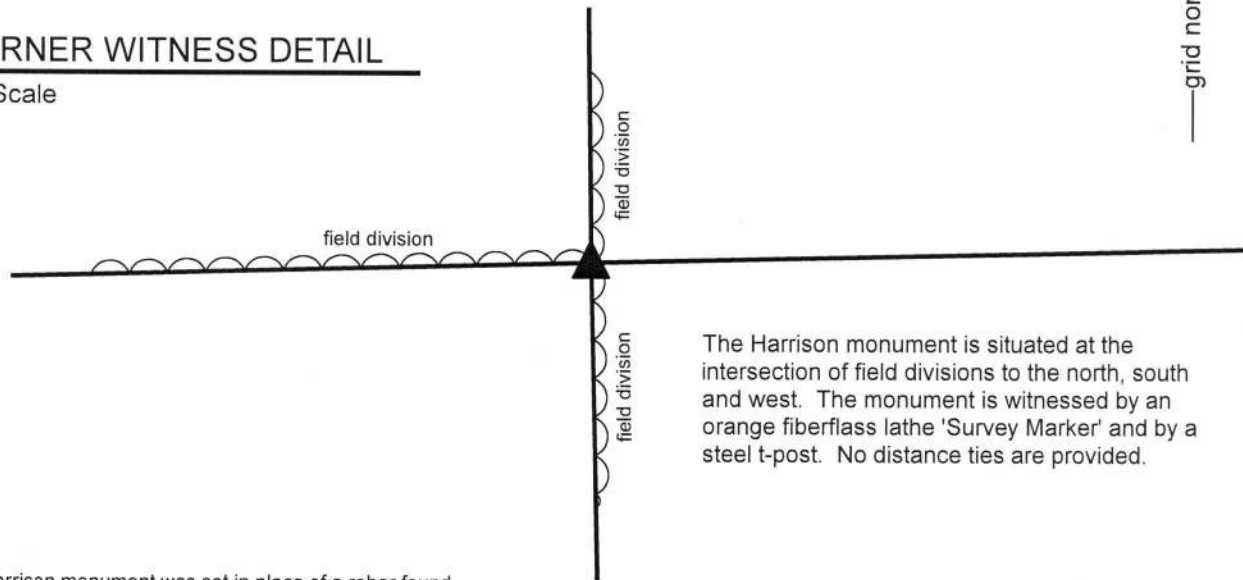
Indiana tie card references:

IN02_T19NR2E19_76 IN02_T20NR2E30_04



CORNER WITNESS DETAIL

No Scale



The Harrison monument is situated at the intersection of field divisions to the north, south and west. The monument is witnessed by an orange fiberglass lathe 'Survey Marker' and by a steel t-post. No distance ties are provided.

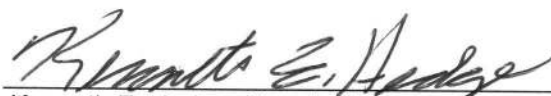
The Harrison monument was set in place of a rebar found.

A BCS record of November 8, 1871 states, with respect to this corner, "Reestablished from roots of trees. Set rock 18.8 by 5 +." No recent BCS tie cards were found referencing this corner.

Excavation was performed at this corner on April 27, 2018. Prior to excavation, a rebar bearing the cap "Deckard Survey" was found at the intersection of field divisions to the north, south and west, witnessed and protected by a steel t-post. During prior reconnaissance at this corner, a pile of rocks had been observed slightly southwest of the position of the rebar. As of April, 2018, the rocks had been removed. Excavation in the vicinity of the rebar and former pile of rocks revealed fragments of a wood post adjacent to the found rebar. No stones were found and it appears that the area has been substantially cleared recently. On first sight, the post found adjacent to the rebar appeared to be the stump of a small tree. Further and deeper excavation revealed a second type of wood and it was determined that a small tree had once grown out of the mostly rotten remnants of a wood post. In the field, it was evident that the rebar was situated at the northeast edge of the remnant post. Analysis of the position of the rebar and post with respect to the distances reported in the 1871 record and the relative positions of evidence of the corners 1/4 mile and 1/2 mile west, respectively, demonstrated that the post and rebar fit very well with the 1871 dimensions, applying the standard scale factor of 1.00451 to the distances reported in the 1871 record. While the post is the most ancient evidence, experience at other, similar corners would indicate that the stone set in 1871 would have most likely been found adjacent to the post. It is believed that the stone has been removed along with the other rocks found previously. Accepting the likelihood that if the record stone were still present, the corner would most likely fall adjacent to the post, the rebar, also falling adjacent to the post, was held as marking the corner. The rebar was removed and replaced with a Harrison monument in the same position. Approximately one foot of uncertainty in all directions should be attributed to the relative position of the post and rebar and the uncertainty as to which side of the post the 1871 stone might have been previously located. It is noted that a survey by Jonathon Hause, PS, dated November 6, 2017 recorded in Book 17, page 56-57 in the Office of the Boone County Surveyor shows the corner as an 8 inch diameter fence post. The position of the post shown on the Hause survey appears to agree with the position of the found remnant post discussed herein. It is further noted that the post was not observed standing above ground during reconnaissance in 2011. The Hause survey does not mention the found rebar.

This corner was originally established as a wood post in 1821.




Kenneth E. Hedge, County Surveyor


James S. Swift, IN LS 20200054

May 9, 2018

Center
Township

Section 19
T19N, R2E

Section 30
T19N, R2E

SECTION CORNER RECORD

BOONE COUNTY SURVEYOR'S OFFICE

NE 200-700

State Plane grid coordinates NAD83 (NSRS 2007):

North: 1756791.75 East: 3161700.86 (U.S. survey feet)

Type of monument: Harrison, 4" disk 'Section Corner'

Depth: Six inches below the adjacent gravel road surface.

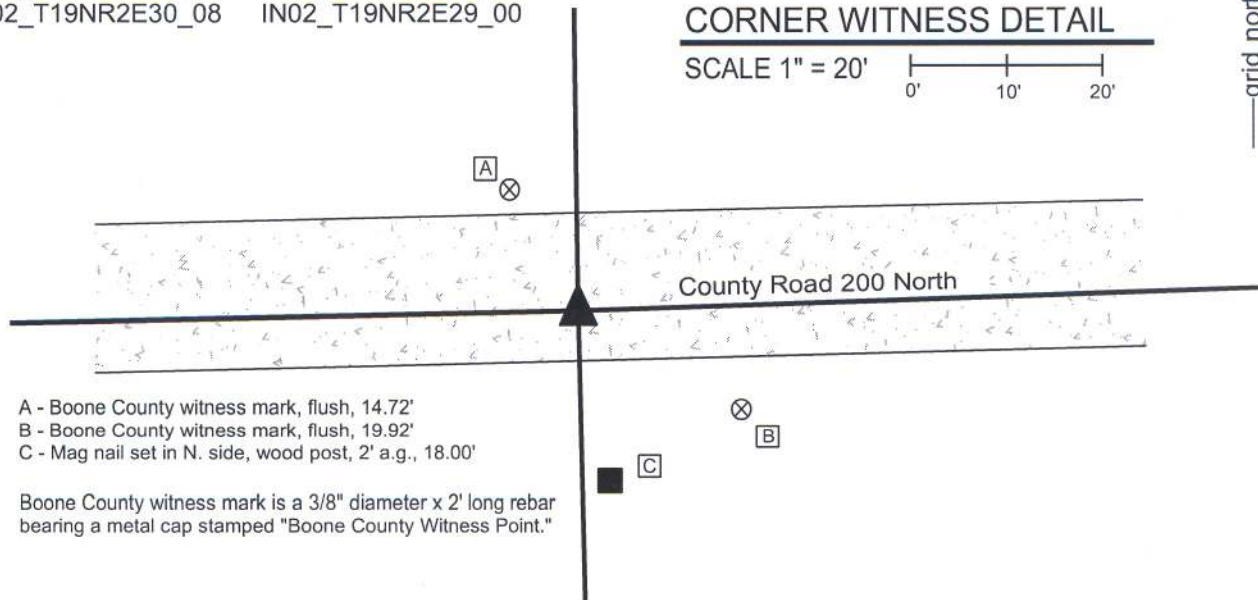
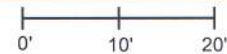
Indiana tie card references:

IN02_T19NR2E19_76 IN02_T19NR2E20_80

IN02_T19NR2E30_08 IN02_T19NR2E29_00

CORNER WITNESS DETAIL

SCALE 1" = 20'



- A - Boone County witness mark, flush, 14.72'
- B - Boone County witness mark, flush, 19.92'
- C - Mag nail set in N. side, wood post, 2' a.g., 18.00'

Boone County witness mark is a 3/8" diameter x 2' long rebar bearing a metal cap stamped "Boone County Witness Point."

The harrison monument was set over a stone found.

A BCS record of January 28, 1869 states "Reestablished from Ash. Set two Rocks. One 5 1/2, 5 by 4 in. marked +. Top Rock 15, 7 by 6 inch. marked + on side." A BCS tie card dated April 1970 states "No stone, set rail."

This corner was excavated on June 14, 2010. Prior to excavation a railroad rail was found 3 inches below the surface of the gravel road, leaning substantially towards the east. Excavation revealed several stones at various depths and positions. A stone which was accepted as being the record lower stone was found at 22 inches deep, 4 feet west and 0.3 feet south of the top of the rail, as originally found. This stone was 5 inches tall by 5 1/2 inches N-S by 7 inches E-W with a clearly visible "+" etched in the top center. Two of the dimensions of the stone match the record dimensions but the E-W dimension does not match the record dimension of 4 inches. Analysis of this situation yielded the conclusion that this is the stone mentioned in the 1869 record and that the variation in the one dimension is most likely to have been a notation error. The fact that the smallest dimension of the stone, as found, is the vertical dimension fits with the character of the stone as being the lower stone. It has been observed at numerous other corners that when the County Surveyors of the second half of the 19th century set two rocks at a corner, the lower stone was usually set horizontally, acting as a base and the upper stone was set vertically. The character of the stone found at this corner matches that observation. The etched "+" on the top, center of the stone is also characteristic of the lower stone. Furthermore, the depth of the stone, being embedded in the clay layer below the road, approximately 14 inches below the bottom of the road bed, fits well with the fact that the upper stone was recorded to be 15 inches tall, hence would have protruded slightly into the bottom of the road bed. This is also characteristic of other top, vertical stones set by County Surveyors in that era. The found stone was held as the marking the corner and the harrison monument was set directly over the etched "+" on the top of the stone.

Another stone was found 1.5 feet East and 0.3 foot South of the record stone, being at 4 inches deep and measuring 13 inches tall by 10 inches N-S by 6 inches E-W with no visible marks. Two other stones were found against each other, approximately 0.8 foot south of the record stone, being 13x9x6 inches at 13 inches deep and 9x5x3 inches deep at 23 inches, respectively. The latter stone was against the lower west edge of the former stone. The rail and three extra stones were removed during excavation. This corner was originally established as a wood post in July, 1821.

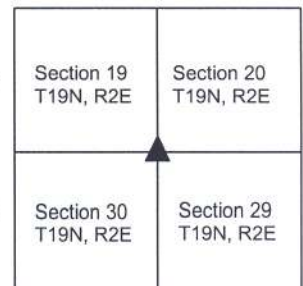


Kenneth E. Hedge
 Kenneth E. Hedge, County Surveyor

James S. Swift
 James S. Swift, IN LS 20200054

July 25, 2011, Revised February 6, 2013

Marion Twp



Union Twp

PHOTOGRAPHIC DOCUMENTATION

Date of photography: June 14, 2010

The railroad rail and the first stone exposed.



The railroad rail and the second stone exposed.



View of the rail, the first stone exposed and the post on the south side of the road.



The record lower stone with etched mark on top.



For details and documentation, refer to related sheet "Section Corner Record."