

SECTION CORNER RECORD

SE 400-600

BOONE COUNTY SURVEYOR'S OFFICE

State Plane grid coordinates NAD83 (2011):
 North: 1725133.92 East: 3156616.92 (U.S. survey feet)

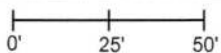
Type of monument: Iron plug in concrete, flush

Indiana tie card references:

IN02_T18NR1E24_80 IN02_T18NR1E25_08
 IN02_T18NR2E19_72 IN02_T18NR2E30_00

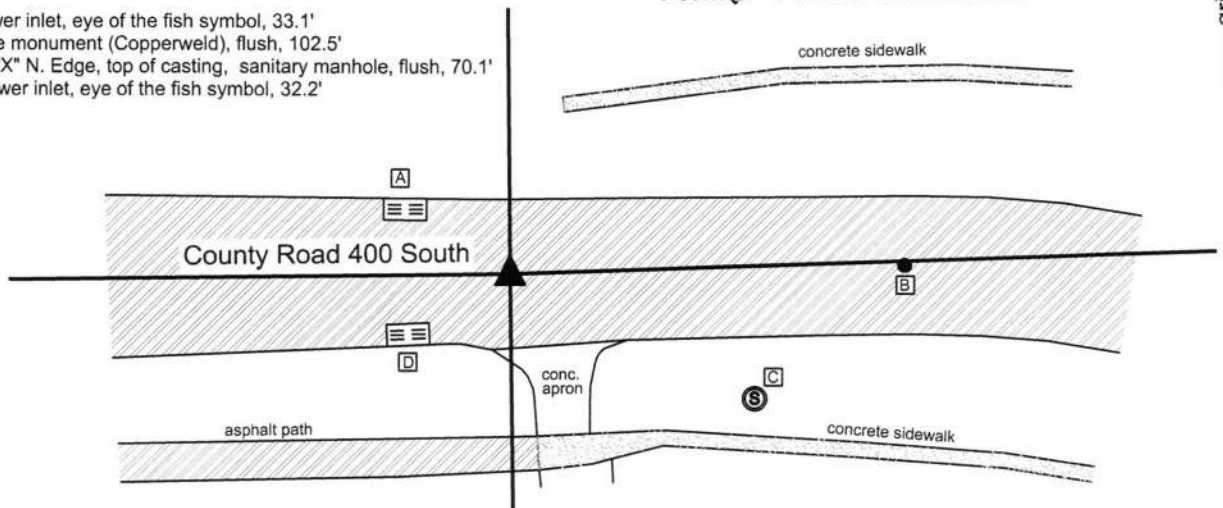
- A - Storm sewer inlet, eye of the fish symbol, 33.1'
- B - Center line monument (Copperweld), flush, 102.5'
- C - Chiseled "X" N. Edge, top of casting, sanitary manhole, flush, 70.1'
- D - Storm sewer inlet, eye of the fish symbol, 32.2'

CORNER WITNESS DETAIL

SCALE 1" = 50' 



Walker Farms Subdivision

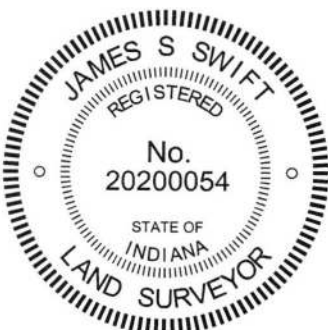


This corner was previously documented by this office on July 14, 2010. Since that date, the Harrison monument at the corner was removed during road construction and replaced with an iron pin in concrete.

The 2010 documentation is as follows:

The Harrison monument was set in place of a Harrison monument found.

A BCS record of July 8, 1881 states "Established by running line from E to F in Sect 19....Set Rock 10,8,6 marked +." A BCS tie card dated May 11, 1970 states "No stone, Set Rail." This tie card references the corner as being the northeast corner of section 25, township 18 north, range 1 east. The card shows this corner as being situated in the center of County Road 400 South and also shows an apparent corner one rod (16.5 feet) north and states "Stone for NW corner of Sec 30 T18N R2E?" The question mark shown in the quote is per the tie card. The field crew evidently found a rock one rod north of the center of the road and concluded that the standard corner fell in the road and the closing corner fell to the north, monumented by the rock. However, the original federal surveyors did not establish two corners at this point. The transcribed government field notes for the closing corner state "West Between Secs 19 & 30 82.88 Intersected West line at post...." Hence, the reference in the 1970 tie card to the closing corner being one rod north of the standard corner is erroneous, as was perhaps known at the time, as evidenced by the question mark. Analysis of the geometry of the proximate lines and corners of the Public Land Survey System in this area yields ample evidence that this corner should fall within County Road 400 South rather than north of it. This corner was excavated on July 29, 2009. Prior to excavation a Harrison monument was found in the approximate center of County Road 400 South at a position which fits that shown for the railroad rail on the 1970 tie card with respect to the center of the road, the fence to the north and the fence to the south 49.5 feet east. No documentation was found for the source of the Harrison. Excavation revealed no further evidence below or in the vicinity of the Harrison. The area of excavation was 12 feet N-S by 12 feet E-W, centered on the Harrison. Based on the references shown on the 1970 tie card, the rail would have definitely fallen within this area of excavation. The road bed in this area is very shallow, being only 6 to 9 inches of gravel, below which is the clay layer. If the record stone had been set in a similar manner to many other stones found from the same era, it would have been embedded in the clay, protruding 2 to 4 inches into the bottom of the road, putting it well within the range of the blade or teeth of a road grader. The fact that the rail is not present indicates that it was probably hit by a road grader and removed. As the Harrison monument was the only physical evidence found and it fits the references on the 1970 tie card, it was held as marking the corner. A new Harrison monument was set in its place approximately 8 inches below grade. The stone shown on the 1970 tie card was not found and was likely removed during the installation of an electric transformer box servicing the Walker Farms development to the north and east. It is noted that the preliminary survey to the Walker Farms development, Survey Book 4, page 67, holds the stone for the S.W. corner of section 19, stating "stone found per Co. Surveyor's ties." As noted above, this stone is not considered the corner. The reference to the tie card does not note the question mark attached to this reference. It is noted that this survey does hold County Road 400 South, extended east to the intersection with County Road 650 East, as the south quarter corner. It is also noted that the stone at the west quarter corner of section 19 was found at the midpoint of the line between the northwest corner, in County Road 300 South and southwest corner, in County Road 400 South. Please refer to the record for corner SE-350-600 for discussion of this stone.




 Kenneth E. Hedge, County Surveyor


 James S. Swift, IN LS 20200054

July 14, 2010 - revised March 23, 2016

Worth Township

Section 24 T18N, R1E	Section 19 T18N, R2E
Section 25 T18N, R1E	Section 30 T18N, R2E

SECTION CORNER RECORD

SE 400-650

BOONE COUNTY SURVEYOR'S OFFICE

State Plane grid coordinates NAD83 (NSRS 2007):

North: 1725228.12 East: 3159388.93 (U.S. survey feet)

Type of monument: Harrison, 4" disk 'Section Corner'

Depth: One inch below adjacent road surface

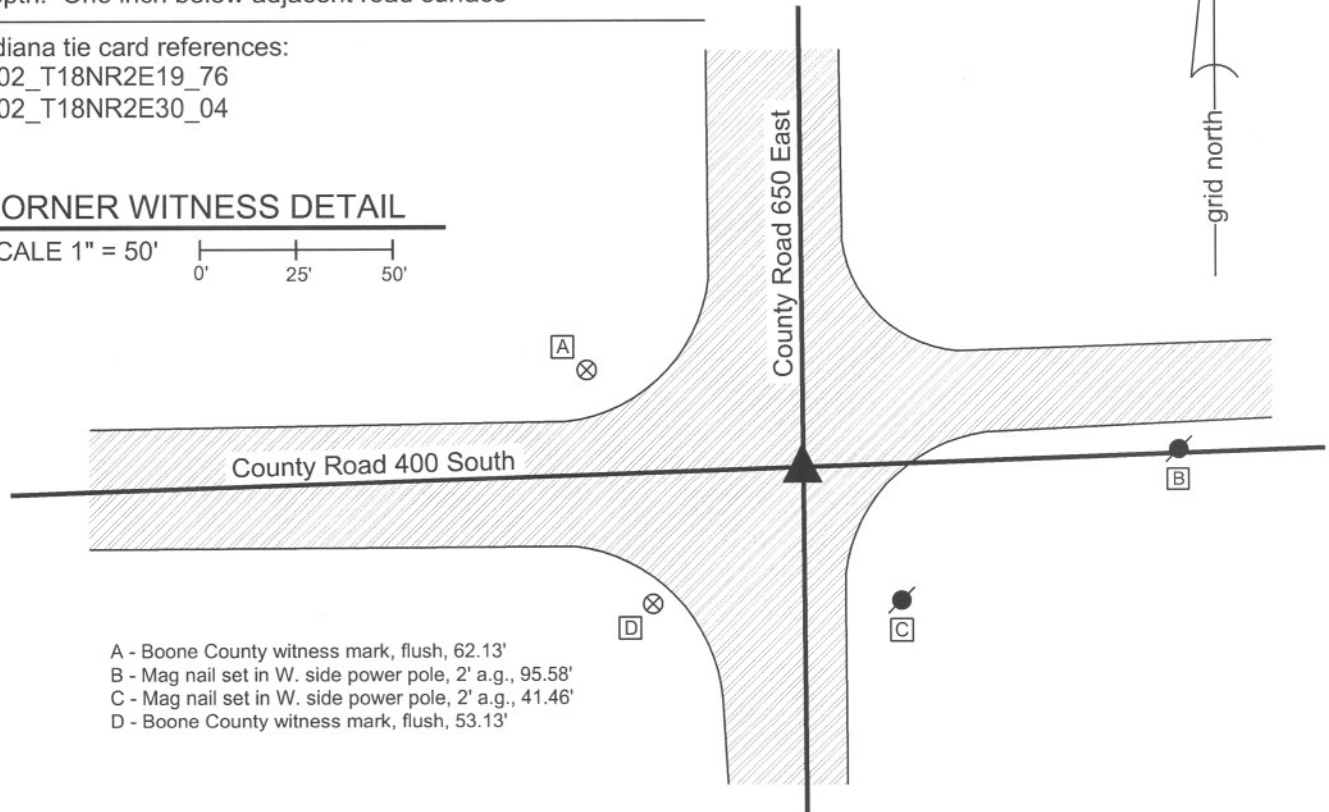
Indiana tie card references:

IN02_T18NR2E19_76

IN02_T18NR2E30_04

CORNER WITNESS DETAIL

SCALE 1" = 50'



- A - Boone County witness mark, flush, 62.13'
- B - Mag nail set in W. side power pole, 2' a.g., 95.58'
- C - Mag nail set in W. side power pole, 2' a.g., 41.46'
- D - Boone County witness mark, flush, 53.13'

The harrison monument was set in place of a PK nail found.

A BCS record of March 15, 1868 states "Reestablished from the intersection of the four lines. Set R, from which....." No recent BCS tie cards were found referencing this corner.

This corner was excavated on August 14, 2009. Prior to excavation, a mag nail was found in the approximate center of County Road 650 East, at what is believed to have been the intersection with the old roadway of County Road 400 South to the west, prior to reconstruction associated with the Walker Farms Development. Excavation revealed a PK nail found at 6 inches below grade, 0.1' south and 0.3' east of the mag nail. Further excavation revealed various additional pieces of evidence, none of which could be accepted as determining the position of the corner. Several medium sized rocks were found 2 feet, more or less, north of the nails. None of these rocks bore the typical characteristics of stones found marking other corners. Various pieces of wood were found, including a discernable pattern of horizontal pieces of wood, oriented perpendicular to the north-south roadway. These pieces of wood were found at depths of 28 to 32 inches and were generally embedded in the clay layer below the road bed. The pieces of wood appeared to represent an old "corduroy" road and were accepted as evidence that the old wagon road tended to be wet and muddy in this area. The existence of the wood pieces and evidence of the corduroy road may explain why the record corner stone was not found, as the stone may have been removed or displaced by activities associated with stabilizing the road bed. An area of excavation being 32 inches E-W at the north end, 58 inches E-W at the south end and 4.5 feet north south, centered N-S on the found nails, with the west line at 2 feet west of the nails and the east line at a northwesterly angle, was excavated to the clay layer below the road and the horizontal pieces of wood. Excavation was not extended further east due to the presence of a fiber optic line, as marked by IUPPS. The found PK nail was accepted as the best available evidence of the corner. The PK nail fits with surrounding corners and is shown as the corner on the plats and preliminary surveys for the Walker Farms development. The PK nail was replaced with a harrison monument at the same position.



Kenneth E. Hedge
Kenneth E. Hedge, County Surveyor

James S. Swift
James S. Swift, IN LS 20200054
March 30, 2012

Worth Twp

Section 19
T18N, R2E

Section 30
T18N, R2E

SECTION CORNER RECORD

SE 400-700

BOONE COUNTY SURVEYOR'S OFFICE

State Plane grid coordinates NAD83 (NSRS 2007):

North: 1725318.25 East: 3162053.92 (U.S. survey feet)

Type of monument: Harrison, 4" disk 'Section Corner'

Depth: Two inches above adjacent ground

Indiana tie card references:

IN02_T18NR2E19_80 IN02_T18NR2E20_72

IN02_T18NR2E30_08 IN02_T18NR2E29_00

A - Mag nail set in W. side wood post, 1.0' a.g., 24.3'

B - Boone County witness mark, flush, 28.10'

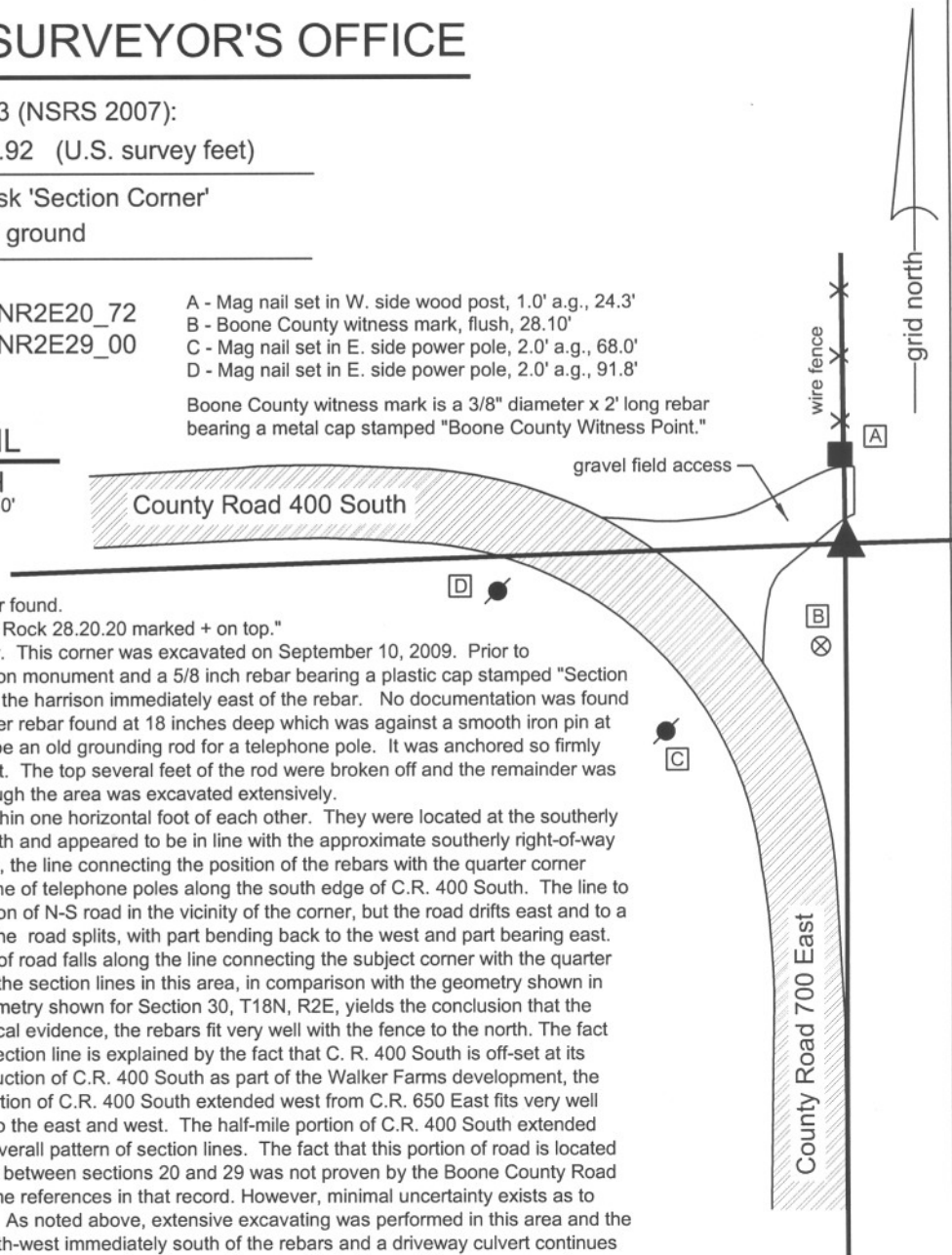
C - Mag nail set in E. side power pole, 2.0' a.g., 68.0'

D - Mag nail set in E. side power pole, 2.0' a.g., 91.8'

Boone County witness mark is a 3/8" diameter x 2' long rebar bearing a metal cap stamped "Boone County Witness Point."

CORNER WITNESS DETAIL

SCALE 1" = 50'



The harrison monument was set in place of a rebar found.

A BCS record of 1866states "ReEstablished Set a Rock 28.20.20 marked + on top."

No recent BCS tie cards were found for this corner. This corner was excavated on September 10, 2009. Prior to excavation, two monuments were visible: a harrison monument and a 5/8 inch rebar bearing a plastic cap stamped "Section Corner." The two monuments were adjacent, with the harrison immediately east of the rebar. No documentation was found for these monuments. Excavation revealed another rebar found at 18 inches deep which was against a smooth iron pin at the same depth. The smooth iron pin appears to be an old grounding rod for a telephone pole. It was anchored so firmly and deeply that an excavator was not able to pull it. The top several feet of the rod were broken off and the remainder was left in place. The record stone was not found, though the area was excavated extensively.

The various found monuments were all located within one horizontal foot of each other. They were located at the southerly prolongation of an old north-south fence to the north and appeared to be in line with the approximate southerly right-of-way of County Road 400 South to the west. Physically, the line connecting the position of the rebars with the quarter corner one-half mile west falls immediately south of the line of telephone poles along the south edge of C.R. 400 South. The line to the south from the rebars is east of the short section of N-S road in the vicinity of the corner, but the road drifts east and to a point approximately one-eighth mile south where the road splits, with part bending back to the west and part bearing east. At this point, the intersection of the three portions of road falls along the line connecting the subject corner with the quarter corner one-half mile south. Extensive analysis of the section lines in this area, in comparison with the geometry shown in the BCS "Surveyor's Record," particularly the geometry shown for Section 30, T18N, R2E, yields the conclusion that the rebars are in a reasonable position. In terms of local evidence, the rebars fit very well with the fence to the north. The fact that the east-west section of road is north of the section line is explained by the fact that C. R. 400 South is off-set at its intersection with C. R. 650 East. Prior to reconstruction of C.R. 400 South as part of the Walker Farms development, the road was offset by approximately 19 feet. The portion of C.R. 400 South extended west from C.R. 650 East fits very well with the overall pattern of section lines extended to the east and west. The half-mile portion of C.R. 400 South extended east from C.R. 650 East clearly falls north of the overall pattern of section lines. The fact that this portion of road is located entirely in section 20, rather running along the line between sections 20 and 29 was not proven by the Boone County Road record due to difficulties with the indexing and name references in that record. However, minimal uncertainty exists as to which portion of the road is along the section line. As noted above, extensive excavating was performed in this area and the record stone was not found. A side ditch runs north-west immediately south of the rebars and a driveway culvert continues northwest to the west of the rebars. The analysis of the surrounding lines and corners indicates that the corner may be up to 6 feet south and up to 12 feet west. However, if the record stone were further west and south, within this area of uncertainty, it would fall within the side ditch, culvert or areas disturbed by the excavation thereof. Although it appears that the found rebars may have been set in their precise position due to the presence of a grounding rod for a power pole, they do generally fit with surrounding evidence and have been held for the known surveys in the area. The lower rebar, found adjacent to the smooth iron pin, was held as the specific location for the corner. The harrison monument had been 0.3 of a foot south of this and the capped rebar was the same amount south and also 0.4 of a foot west. This corner was originally established as a wood post in July, 1821.



Kenneth E. Hedge
 Kenneth E. Hedge, County Surveyor

James S. Swift
 James S. Swift, IN LS 20200054
 July 14, 2010

Worth Township

Section 19 T18N, R2E	Section 20 T18N, R2E
Section 30 T18N, R2E	Section 29 T18N, R2E

SECTION CORNER RECORD

SE 450-600

BOONE COUNTY SURVEYOR'S OFFICE

CORNER 1 ONLY:

State Plane grid coordinates NAD83 (NSRS 2007):

North: 1722499.96 East: 3156657.01 (U.S. survey feet)

Type of monument: 30 inch length of 5/8 inch diameter rebar with metal cap stamped "Boone County Surveyor"

Depth: 18 inches below adjacent cultivated field

Indiana tie card references:

IN02_T18NR1E25_44

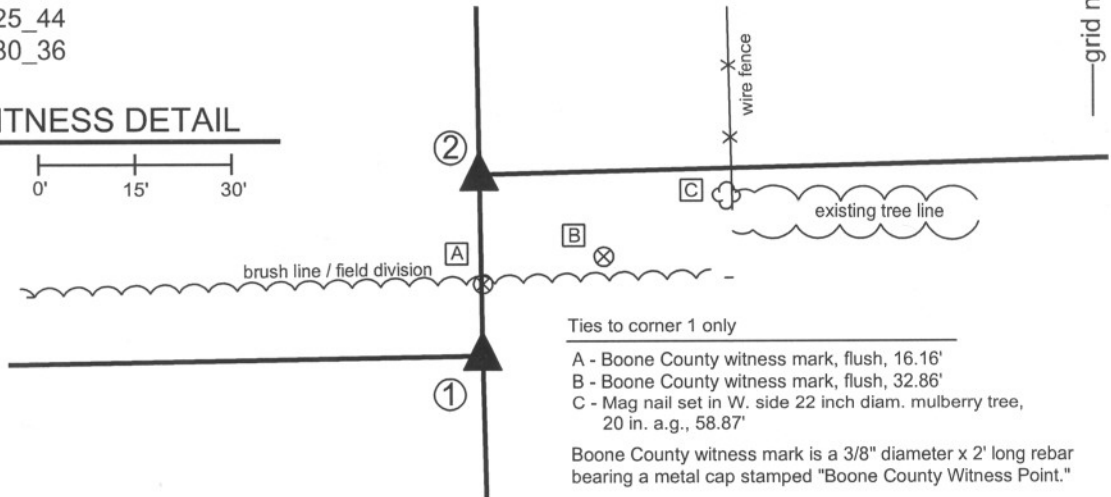
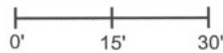
IN02_T18NR2E30_36

- ① E. 1/4 corner
Section 25
T 18 N, R 1 E
Rebar, 18" below grade
- ② W. 1/4 corner
Section 30
T 18 N, R 2 E
Corner position not firmly established



CORNER WITNESS DETAIL

SCALE 1" = 40'

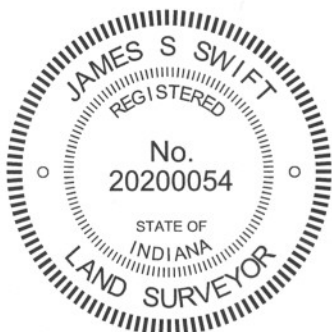


The capped rebar was set in place of a harrison monument found.

No specific descriptions of corner 1 were found beyond the original establishment of the corner as a wood post in June, 1821. It is shown, however, as the terminal point for measurements in records of 1841 and 1853. A BCS tie card dated November 28, 2005 shows the corner as a harrison monument with no documentation of source. Private surveys, including those by American Consulting Engineers which are preliminary surveys for the Anson Development show the corner as a rebar found. Please see Instrument 20060009189 in the Boone County Recorder's Office, among others.

The harrison monument, as found, was slightly disturbed, having apparently been set loosely in the dirt a few inches below a tilled field. Its position fit the the position of the rebar shown on private surveys and is believed to have been set in place of the rebar. The point falls well south of a brush line and field division and well west of the fence to the north. The position of the found harrison (and former rebar) was tested with respect to the center quarter corner of section 25 and the 1/16th corner between the center quarter and subject corner (east quarter corner). The A.C.E. surveys shown the center quarter corner as a stone found. A rebar with a metal cap stamped American Consulting Engrs, Inpls, was held as marking the corner and is believed to be over the found stone. The 1/16th corner at the intersection of County Road 450 South and 575 East was excavated and a stone was found marking the corner. The BCS record of October 19, 1853 shows the distance between the center quarter corner and the east quarter corner as being 81.12-1/2 half-chains and the distance between the 1/16th corner and the east quarter corner as being 40.31-1/2 half chains, leaving 40.81 half-chains between the center quarter corner and the 1/16th corner. Extending the line from the rebar over stone at the center quarter corner through the stone at the 1/16th corner by the same distance proportions documented in the 1853 record, a calculated position for the subject corner falls 1.4 feet east and 1.6 feet south of the found harrison monument. This variation is considered reasonable with respect to the 1853 dimensions and techniques. While the source of the rebar formerly marking the corner is not known, it was at a reasonable position with respect to other monuments and the relevant record dimensions, and did represent available, physical evidence of the corner. The found harrison monument was held as marking the corner. The corner is approximately 52 feet west of the fence to the north, which is explained by the fact that the farm in section 25 also owns 3 rods (49.5 feet) off of the west side of the northwest quarter of section 30. The unstable harrison monument was replaced with a 30 inch length of 5/8 inch diameter rebar driven to 18 inches below the surface of the cultivated field and capped with a metal cap stamped Boone County Surveyor's Office.

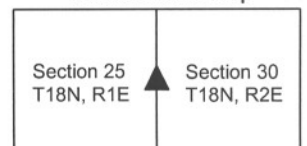
The specific position of the west quarter corner of section 30 (corner 2) was not determined as of publication of this tie card. The position graphically demonstrated on the sketch is at the average of the closing offset distances at the northwest and southwest corners of section 30, being 57.5 links or 37.95 feet from the east quarter corner of section 25. This position falls well north of the existing tree line / occupation line. Additional research is required to determine the specific location of corner 2 and the graphical representation of the corner on this document should not be construed as confirmation of the location of that corner. Corner 1 was originally established as a wood post in 1819. Corner 2 is not an original federal corner and is first documented in the BCS Surveyor's Record in 1835, though minimal information is given in that entry and the monument set at that time, if any, is not documented.



Kenneth E. Hedge
Kenneth E. Hedge, County Surveyor

James S. Swift
James S. Swift, IN LS 20200054
March 30, 2012

Worth Township



SECTION CORNER RECORD

SE 450-700

BOONE COUNTY SURVEYOR'S OFFICE

State Plane grid coordinates NAD83 (NSRS 2007):
North: 1722674.81 East: 3162052.28 (U.S. survey feet)

Type of monument: Harrison, 4" disk 'Section Corner'
Depth: Flush with surface

Indiana tie card references:
IN02_T18NR2E29_36
IN02_T18NR2E30_44

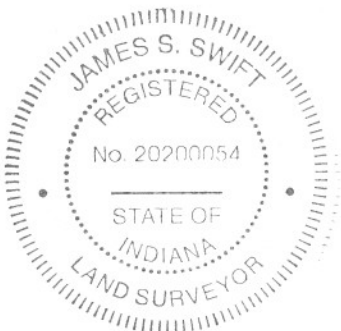
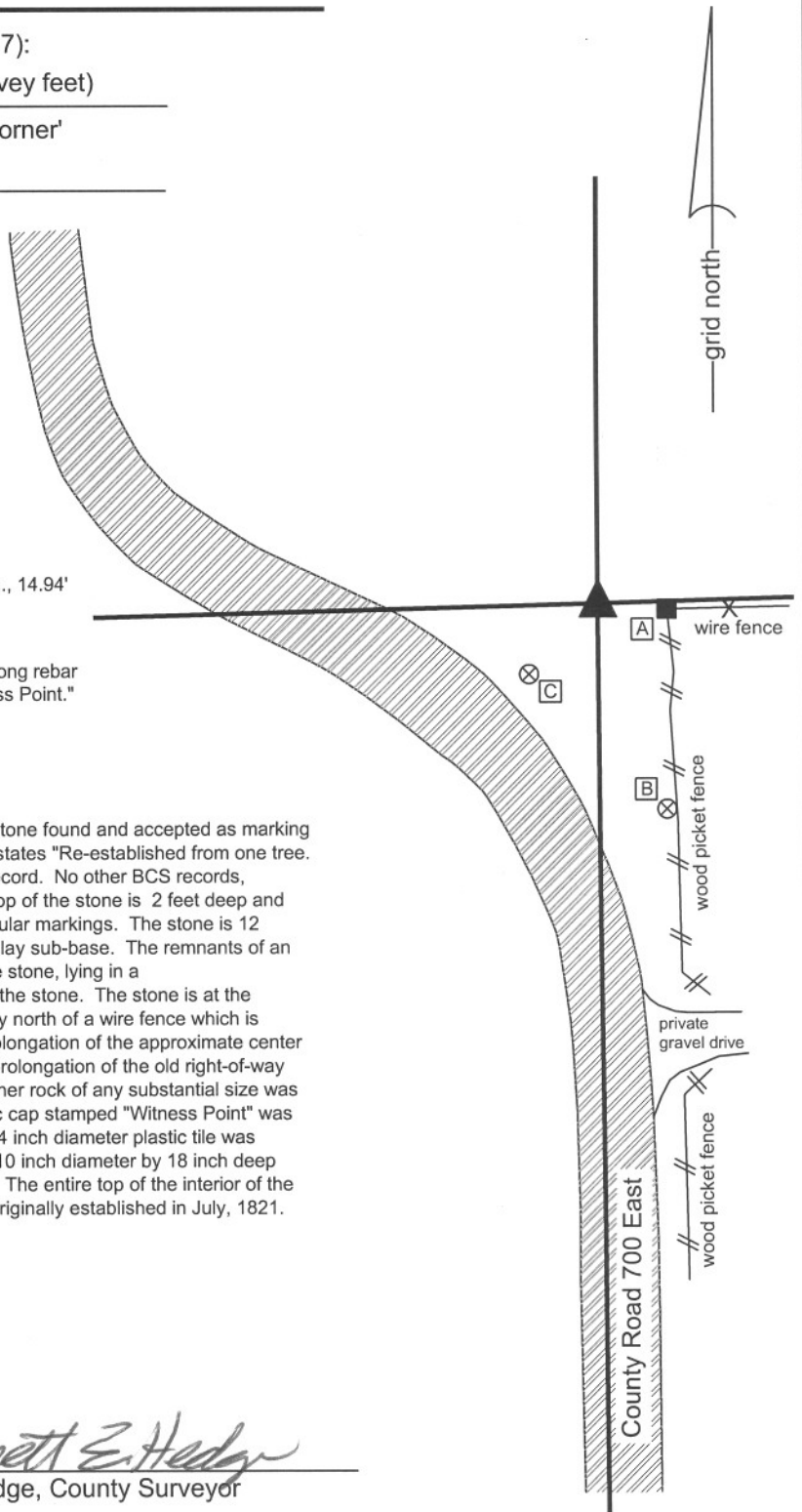
CORNER WITNESS DETAIL

SCALE 1" = 40'
0' 20' 40'

- A - Mag nail set in W side, wood corner post, 1.5 a.g., 14.94'
- B - Boone County witness mark, flush 46.28'
- C - Boone County witness mark, flush 21.07'

Boone County witness mark is a 3/8" diameter x 2' long rebar bearing a metal cap stamped "Boone County Witness Point."

The Harrison monument was set over the top, center of a stone found and accepted as marking the corner. A previous BCS record dated March 15, 1868 states "Re-established from one tree. Set a rock." No description of the rock was given in this record. No other BCS records, beyond the original notes, are known for this corner. The top of the stone is 2 feet deep and measures 9 inches (N-S) by 12 inches (E-W) with no particular markings. The stone is 12 inches vertical, with the bottom half fully embedded in the clay sub-base. The remnants of an old cedar brace for a post were found south and east of the stone, lying in a southeasterly/northwesterly orientation, pointing directly at the stone. The stone is at the westerly extension of an old tree line to the east and slightly north of a wire fence which is south of the tree line. The stone is also at the northerly prolongation of the approximate center of County Road 700 East, and 1 rod west of the northerly prolongation of the old right-of-way fence along the east side of County Road 700 East. No other rock of any substantial size was found in this vicinity. A 5/8 inch rebar bearing a red plastic cap stamped "Witness Point" was found 0.84' S and 2.89' W of the stone. A 2 foot length of 24 inch diameter plastic tile was placed above the stone and filled with gravel, except for a 10 inch diameter by 18 inch deep core of concrete in which the Harrison monument was set. The entire top of the interior of the tile was filled with 3 inches of concrete. This corner was originally established in July, 1821.



Kenneth E. Hedge

 Kenneth E. Hedge, County Surveyor

J. S. Swift

 James S. Swift, IN LS 20200054
 January 30, 2008

Worth Township

Section 30 T18N, R2E	▲	Section 29 T18N, R2E
-------------------------	---	-------------------------

PHOTOGRAPHIC DOCUMENTATION

Date of photography: 11/28/2007

Photograph of stone found, taken from west, showing picket fence to the east. The stone is approximately 2 feet deep, slightly north of the westerly extension of a east-west wire fence which terminates on the north end of the picket fence. The stone is in-line with the old east-west tree line, north of the wire fence.



Photo of the stone from above, after 2 foot diameter plastic tile was placed around it. The Harrison monument was set over the midpoint of the top of the stone, within the plastic tile. The top of the Harrison monument is flush with the top of the tile and surrounding ground.



SECTION CORNER RECORD

SE 500-600

BOONE COUNTY SURVEYOR'S OFFICE

State Plane grid coordinates NAD83 (NSRS 2007):

Corner 1: North: 1719861.18 East: 3156725.03 (U.S. survey feet)

Corner 2: North: 1719937.06 East: 3156723.07 (U.S. survey feet)

CORNER WITNESS DETAIL

SCALE 1" = 60'



Corner 1

Type of monument: Harrison, 4" disk 'Section Corner'

Depth: Three inches above adjacent ground.

Corner 2

Type of monument: 5/8 inch rebar with metal cap stamped "Boone County Surveyor"

Depth: Flush with adjacent ground.

Indiana tie card references:

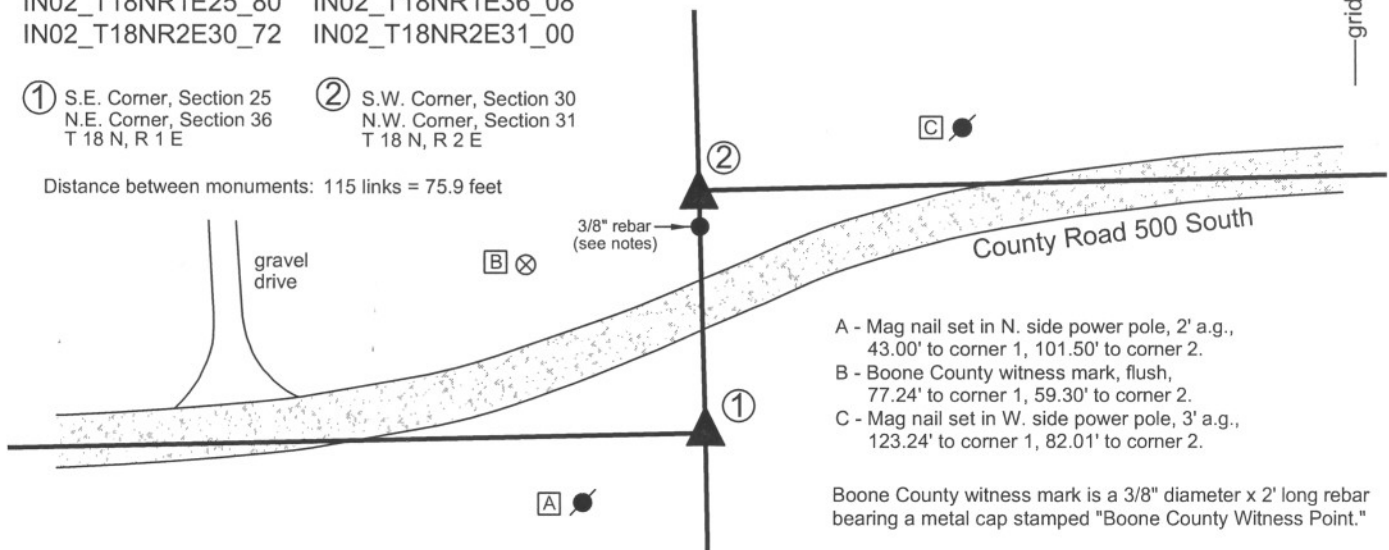
IN02_T18NR1E25_80 IN02_T18NR1E36_08

IN02_T18NR2E30_72 IN02_T18NR2E31_00

① S.E. Corner, Section 25
N.E. Corner, Section 36
T 18 N, R 1 E

② S.W. Corner, Section 30
N.W. Corner, Section 31
T 18 N, R 2 E

Distance between monuments: 115 links = 75.9 feet



- A - Mag nail set in N. side power pole, 2' a.g., 43.00' to corner 1, 101.50' to corner 2.
- B - Boone County witness mark, flush, 77.24' to corner 1, 59.30' to corner 2.
- C - Mag nail set in W. side power pole, 3' a.g., 123.24' to corner 1, 82.01' to corner 2.

Boone County witness mark is a 3/8" diameter x 2' long rebar bearing a metal cap stamped "Boone County Witness Point."

The harrison monument at corner 1 was set in place of a harrison monument found. The rebar at corner 2 was set on the range line at the record government closing distance from corner 1.

A BCS record dated August 30, 1869 states with respect to corner 1 "Found from stumps both trees. Drove no stake." A BCS record dated May 17, 1912 states with respect to corner 2 "Reestablished. Set rock. Good sized marked +." A BCS tie card dated November 28, 2005 shows the corner as a harrison monument with no documentation of source, though the harrison monument is in substantially the same position as a rebar shown on private surveys including a survey by American Consulting, Inc. recorded in Survey Book 8, page 15-16 in the Boone County Recorder's Office.

Corner 1 falls in an area which has clearly been disturbed and no evidence of the corner was found beyond the existing harrison monument. It is noted that the position of the harrison monument and the rebar which previously existed at the corner, fit very well with the extension of the existing roadway to the west and with the relative positions of the quarter corner 1/2 mile west and a railroad rail at the generally accepted quarter-quarter corner 1/4 mile west. The existing harrison was held as the corner and a new harrison monument was set in a more stable manner. Corner 2 falls near the toe of slope of an area of substantial fill for the adjacent roadway. A 3/8 inch rebar was found near the corner, but the small rebar fits with neither the original government closing distance, nor with the evidence of the section line in the form of the extended roadway to the east. Probing and limited excavation in the vicinity of the corner produced several small to medium sized rocks, none of which specifically appeared to be a section corner stone. No other evidence of this corner was found. Corner 2 was established on the range line at the record government closing distance of 115 links. This position fits well with the existing roadway to the east. A 5/8 inch diameter rebar, 3 feet long, was set at the corner, marked with an aluminum cap stamped 'Boone County Surveyor.' The 3/8 inch rebar is located 11.3 feet south of corner 2.

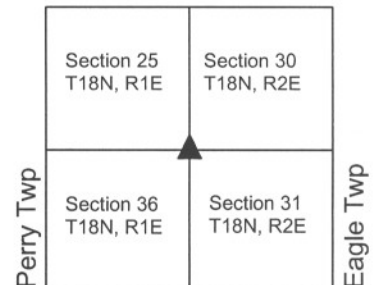
Corner 1 was originally established as a wood post in 1819 and corner 2 was originally established as a wood post in 1821.



Kenneth E. Hedge
Kenneth E. Hedge, County Surveyor

James S. Swift
James S. Swift, IN LS 20200054
July 25, 2011

Worth Township



SECTION CORNER RECORD

SE 500-650

BOONE COUNTY SURVEYOR'S OFFICE

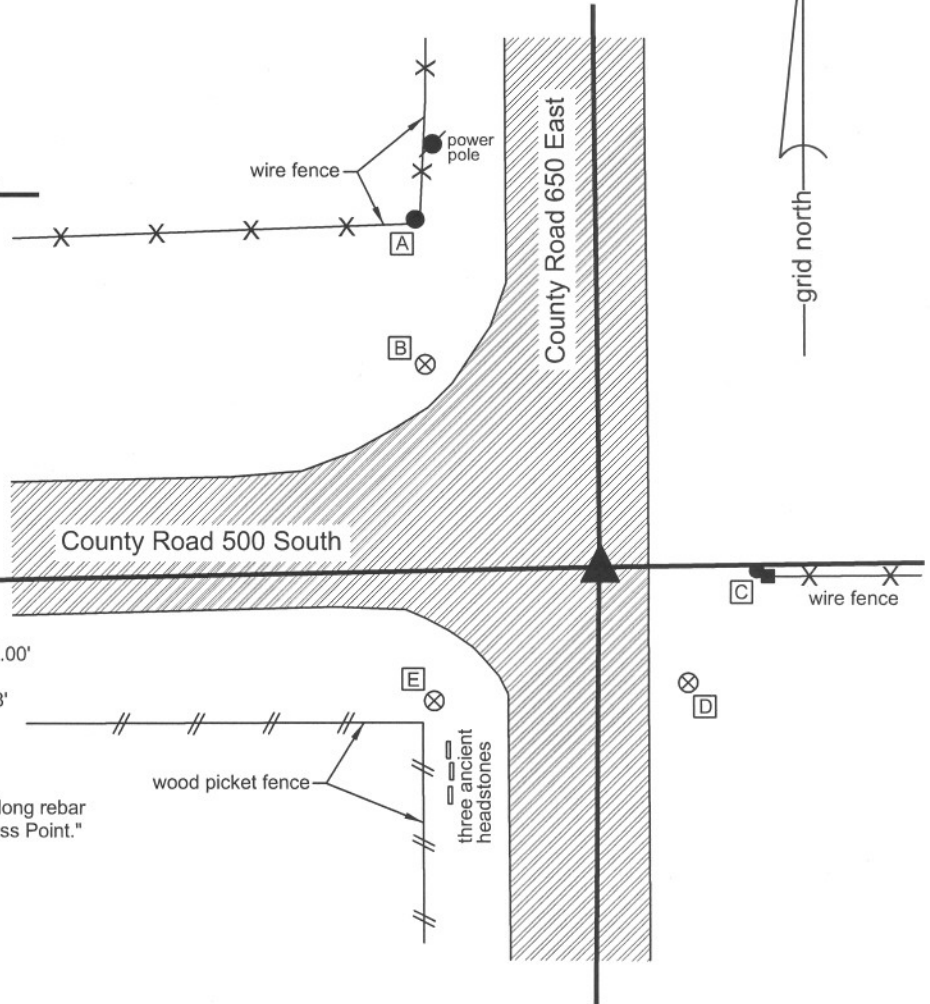
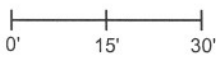
State Plane grid coordinates NAD83 (NSRS 2007):
 North: 1719996.89 East: 3159441.69 (U.S. survey feet)

Type of monument: Harrison, 4" disk 'Section Corner'
 Depth: 0.1' below adjacent road surface

Indiana tie card references:
 IN02_T18NR2E30_76
 IN02_T18NR2E31_04

CORNER WITNESS DETAIL

SCALE 1" = 30'



- A - Bottom, S.E. edge, round metal corner post, 60.00'
- B - Boone County witness mark, flush, 41.63'
- C - Mag nail set in W side, utility post, 1' a.g., 24.68'
- D - Boone County witness mark, flush, 22.75'
- E - Boone County witness mark, flush, 33.03'

Boone County witness mark is a 3/8" diameter x 2' long rebar bearing a metal cap stamped "Boone County Witness Point."

The Harrison monument was set in the place of a 30" section of railroad rail on end found and accepted as marking the corner. The top of the rail was 8 inches below the road surface. No specific record of the rail was found, though it is likely that the rail was set on or about October 25, 1968, per a BCS record of that date which states "set stake." The 1968 record did not state "no stone." A 6 inch long piece of rebar, the top of which was 2 inches below the surface of the road, was found directly above the railroad rail. The rail and rebar were both removed during excavation. A previous BCS record, dated January 9, 1871 states: "Re-est. from Oak Stump, Set two Rocks One 8.7.6 +, Top one 11.8.7 +". A four-foot by four-foot hole, centered on the rail, was excavated to a depth of 3 feet, which was well into the clay sub-base. The stones were not found. The existing evidence is ambiguous with respect to the possible location of the stones, if they are still present. This corner was originally established in July, 1821.

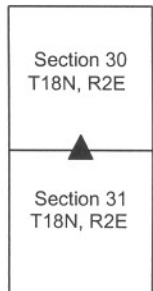


Kenneth E. Hedge
 Kenneth E. Hedge, County Surveyor

J. S. Swift
 James S. Swift, IN LS 20200054
 January 30, 2008

Worth Township

Eagle Township



SECTION CORNER RECORD

BOONE COUNTY SURVEYOR'S OFFICE

SE 500-700

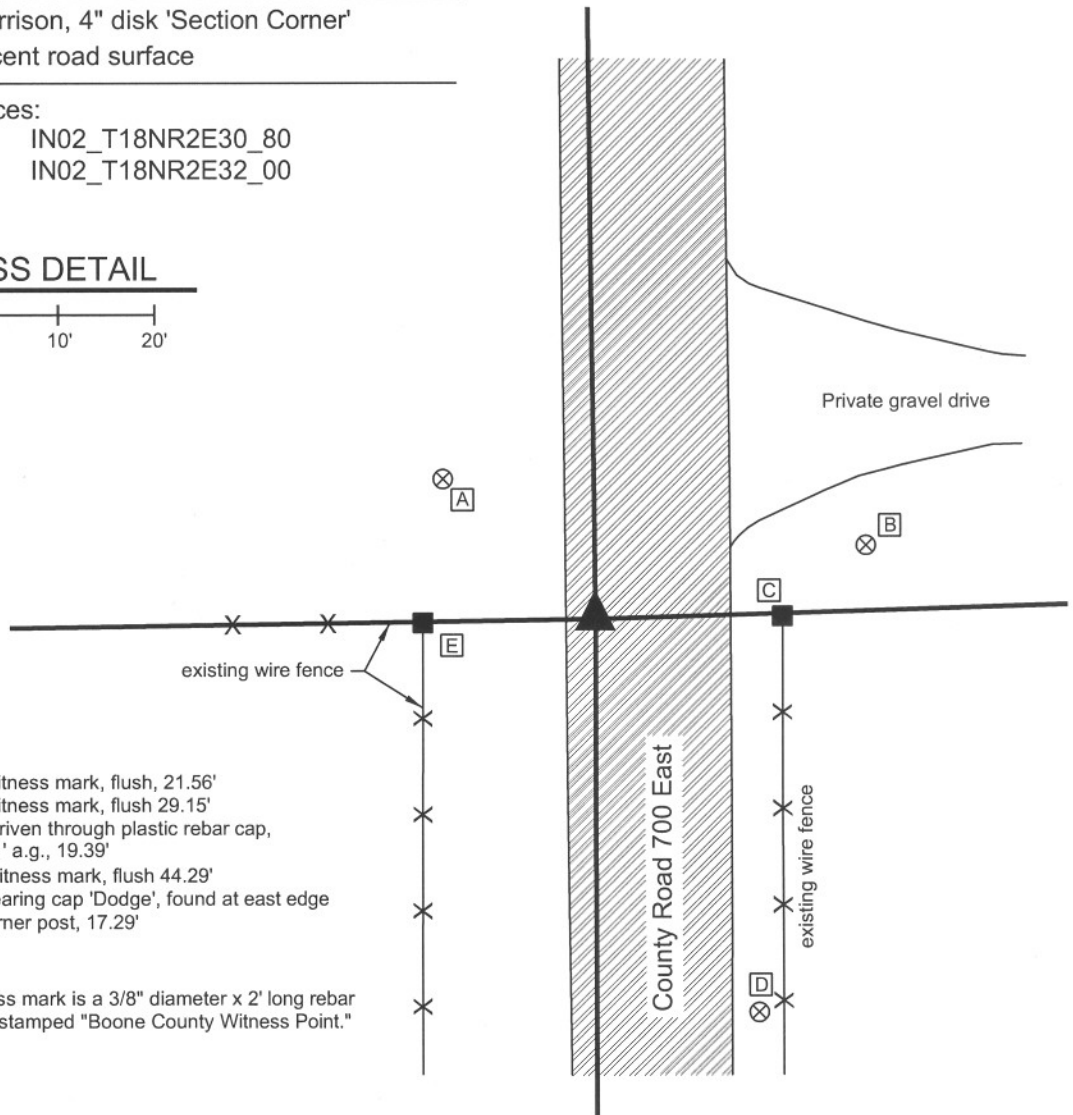
State Plane grid coordinates NAD83 (NSRS 2007):
 North: 1720034.42 East: 3162077.73 (U.S. survey feet)

Type of monument: Harrison, 4" disk 'Section Corner'
 Depth: 0.1' below adjacent road surface

Indiana tie card references:
 IN02_T18NR2E29_72 IN02_T18NR2E30_80
 IN02_T18NR2E31_08 IN02_T18NR2E32_00

CORNER WITNESS DETAIL

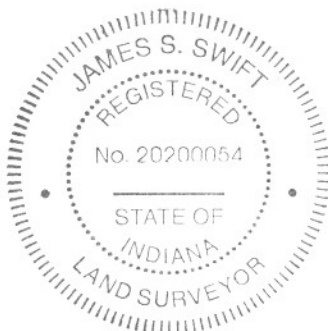
SCALE 1" = 20'
 0' 10' 20'



- A - Boone County witness mark, flush, 21.56'
- B - Boone County witness mark, flush 29.15'
- C - Mag nail found driven through plastic rebar cap, W. side post, 1.1' a.g., 19.39'
- D - Boone County witness mark, flush 44.29'
- E - 5/8 inch rebar bearing cap 'Dodge', found at east edge base of wood corner post, 17.29'

Boone County witness mark is a 3/8" diameter x 2' long rebar bearing a metal cap stamped "Boone County Witness Point."

The Harrison monument was set in place of a 5/8 inch rebar found and accepted as marking the corner. A previous BCS record dated August 19, 1903 states "Established corner by intersecting lines. Set rock 18x12x12 +. Cedar post 12x12 N8°W 19 links." A 3 foot wide (N-S) by 12 foot long (E-W) hole was excavated to the clay sub-base. The hole was centered N-S on the existing fence end posts on the east and west sides of the road and extended from the west edge of the pavement to across the physical centerline. The stone was not found in this area of excavation. The found 5/8 inch rebar was near the west edge of the road, approximately 0.1 below grade and visible within a small hole. Another rebar, bearing the cap "Witness point" was found 1 foot east of the visible rebar. Recent recorded surveys have held the visible, non-capped rebar. The Harrison monument was set in place of this rebar. Both rebars were removed during excavation. This corner was originally established in July, 1821.



Kenneth E. Hedge
 Kenneth E. Hedge, County Surveyor

James S. Swift
 James S. Swift, IN LS 20200054
 January 30, 2008

Worth Township

Eagle Township

Section 30 T18N, R2E	Section 29 T18N, R2E
Section 31 T18N, R2E	Section 32 T18N, R2E