

# SECTION CORNER RECORD

# NE 700-750

## BOONE COUNTY SURVEYOR'S OFFICE

State Plane grid coordinates NAD83 (2011):  
North: 1783517.47 East: 3164047.44 (U.S. survey feet)

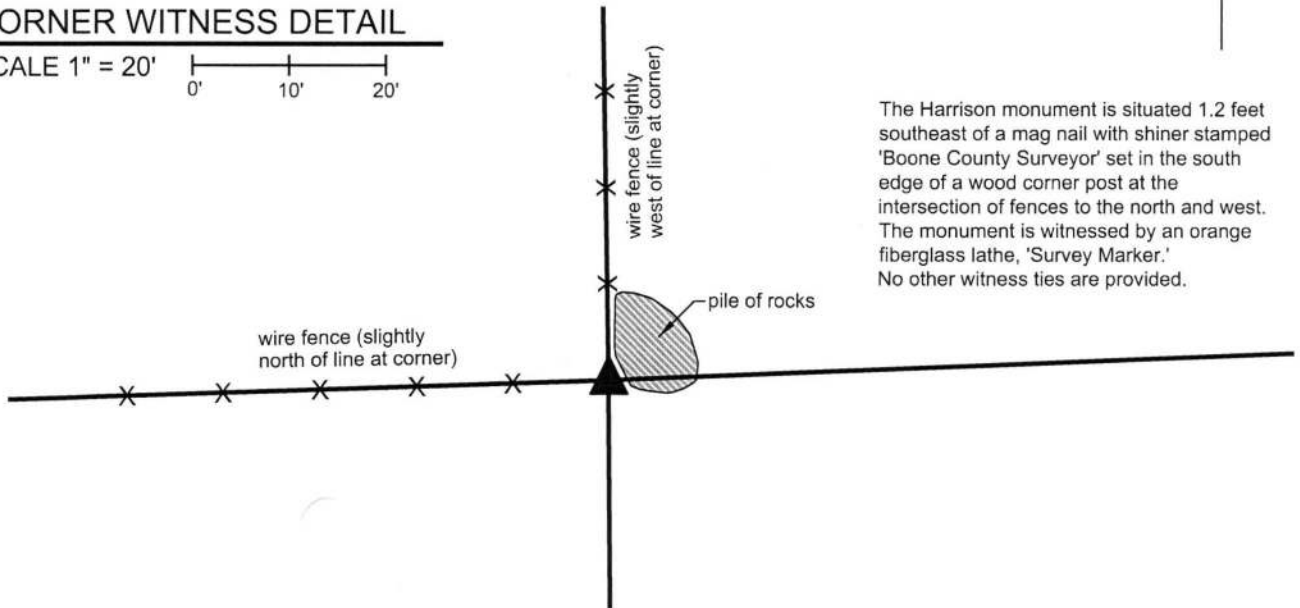
Type of monument: Harrison, 4" disk 'Section Corner'  
Depth: Five inches above adjacent ground

Indiana tie card references:  
IN02\_T20NR2E29\_76 IN02\_T20NR2E32\_04



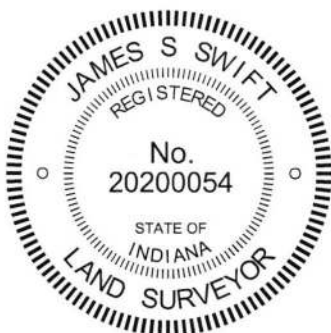
### CORNER WITNESS DETAIL

SCALE 1" = 20'  
0' 10' 20'



The Harrison monument is situated 1.2 feet southeast of a mag nail with shiner stamped 'Boone County Surveyor' set in the south edge of a wood corner post at the intersection of fences to the north and west. The monument is witnessed by an orange fiberglass lathe, 'Survey Marker.' No other witness ties are provided.

The Harrison monument was set over a stone found. A BCS record of January 21-23, 1869 states, with respect to this corner, "Reestablished from stump of Beech. Set two rocks. 7.6 by 5-1/2 in. marked +. Top Rock 14.8 by 5-1/2 marked +." No recent BCS tie cards were found referencing this corner. Excavation was performed at this corner on March 5, 2018. Prior to excavation, the apparent visible evidence of the corner was a wood corner post at the intersection of fences to the north and west. A substantial pile of rocks was found east and northeast of the post. The rocks were not piled against the post and with the removal of several of the rocks, probing and manual excavation was possible around the post. Extensive probing yielded a lack of rocks in the ground around the post. Though many rocks are present above ground in the immediate vicinity of the post, the only rocks found below 3 inches deep in the ground were found slightly more than one foot to the southeast of the post. A stone which measured 14 inches by 8 inches by 8 inches, matching two dimensions of the top stone mentioned in the 1869 record was found amongst the rocks above the surface. No marks were detected on the rock and it was not considered reliable evidence corner as it was not firmly attached to the ground. The rocks found in the ground to the southeast of the post were in a vertical column. The upper rock was slightly below the surface. Another rock was found directly below that. Both of these stones matched the 7.6 dimension mentioned in the 1869 record but were only approximately 4 inches thick. No marks were detected on them. A third stone which did not match the dimensions of either of the record stones was found below the upper two stones. A fourth stone was found at 30 inches deep. The top of the stone was exposed briefly before the excavation hole began to fill with water. No marks were detected on the rock and it appeared to be larger than what was called for in the 1869 record. It is noted that the standing wood corner post does not appear to be ancient. The vertical column of rocks was accepted as the most reliable evidence of the corner. A Harrison monument was set directly over the top, high point of the stone found at 30 inches deep. It is noted that, due to the excavation of a substantial hole in revealing the stone at 30 inches deep, the aforementioned stone being 14.8.8 inches was incorporated as part of the monument, entirely encased in concrete, to provide stability. This corner was originally established as a wood post in 1822.



*Kenneth E. Hedge*  
Kenneth E. Hedge, County Surveyor

*James S. Swift*  
James S. Swift, IN LS 20200054  
March 28, 2018

Marion Township



# SECTION CORNER RECORD

# NE 700-800

## BOONE COUNTY SURVEYOR'S OFFICE

State Plane grid coordinates NAD83 (CORS96):

North: 1783624.03 East: 3166701.64 (U.S. survey feet)

Type of monument: Harrison, 4" disk 'Section Corner'

Depth: six inches below adjacent gravel road surface

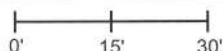
Indiana tie card references:

IN02\_T20NR2E29\_80      IN02\_T20NR2E28\_72

IN02\_T20NR2E32\_08      IN02\_T20NR2E33\_00

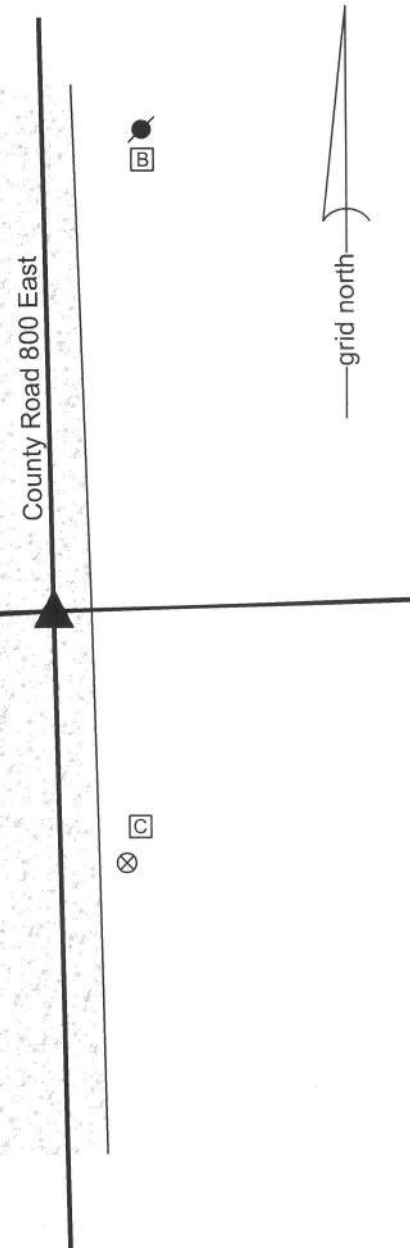
### CORNER WITNESS DETAIL

SCALE 1" = 30'



- A - Boone County witness mark, flush, 26.06'
- B - Mag nail set in s. side power pole, 2' a.g., 75.65'
- C - Boone County witness mark, flush, 40.74'

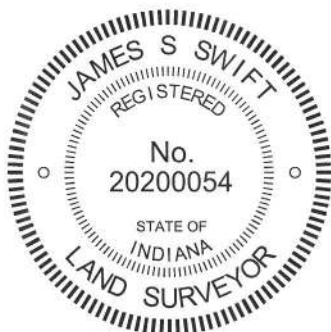
Boone County witness mark is a 3/8" diameter x 2' long rebar bearing a metal cap stamped "Boone County Witness Point."



The harrison monument was set in place of a railroad spike found.

A BCS record of October 4, 1886 states "Reestablished from stump of Beech (S 9° W). Set Rock 19x15x13+, witness 12x13x8+ bears S38°E 44 lks." A BCS tie card dated August 10, 1974 states "small stone found" and graphically demonstrates the corner to be at the midpoint between end posts for the fences to the east and west.

This corner was excavated on August 2, 2013. Prior to excavation a railroad spike was found at 2 inches deep in the gravel road. Excavation of an area extending 3.5 feet N, 5 feet E, 3.5 feet S and 5 feet W revealed no further evidence of the corner. The reference on the 1974 tie card to a "small stone found" does not harmonize with the 1886 call for a stone 19x15x13, which would probably not have been considered "small" by a BCS crew of that, or any, era. It is noted that the railroad spike is not consistent with the type of monument known to be used by BCS crews in 1975. It is also noted that the road bed was found to consist of only 5 inches of material above the clay layer. Typically corner stones are found to be embedded in the clay layer below the road, protruding 2 to 5 inches into the bottom of the road bed. Given the minimal road bed at this corner, it is highly likely that the 1886 record stone was repeatedly hit by road grading equipment and possible removed for that reason. The railroad spike does fit with local evidence in the form of the field division to the west. The spike was near the east side of the road, as were the corner stones found 1/2 and 1 mile north, respectively of this corner. The witness stone called for in the 1886 record was searched for in the form of probing. The expected position of the witness stone falls either in the road side ditch or the adjacent plowed field. Probing revealed no evidence of the witness stone. Given the lack of contrary evidence, the position of the railroad spike was held as marking the corner and the railroad spike was replaced with a harrison monument. This corner was originally established as a wood post in June, 1821.



*Kenneth E. Hedge*  
Kenneth E. Hedge, County Surveyor

*James S. Swift*  
James S. Swift, IN LS 20200054  
February 5, 2015

Marion Township

|                         |                         |
|-------------------------|-------------------------|
| Section 29<br>T20N, R2E | Section 28<br>T20N, R2E |
| Section 32<br>T20N, R2E | Section 33<br>T20N, R2E |

# SECTION CORNER RECORD

NE 750-700

## BOONE COUNTY SURVEYOR'S OFFICE

State Plane grid coordinates NAD83 (CORS96):

North: 1786086.06 East: 3161349.59 (U.S. survey feet)

Type of monument: Harrison, 4" disk 'Section Corner'

Depth: six inches below adjacent gravel road surface

Indiana tie card references:

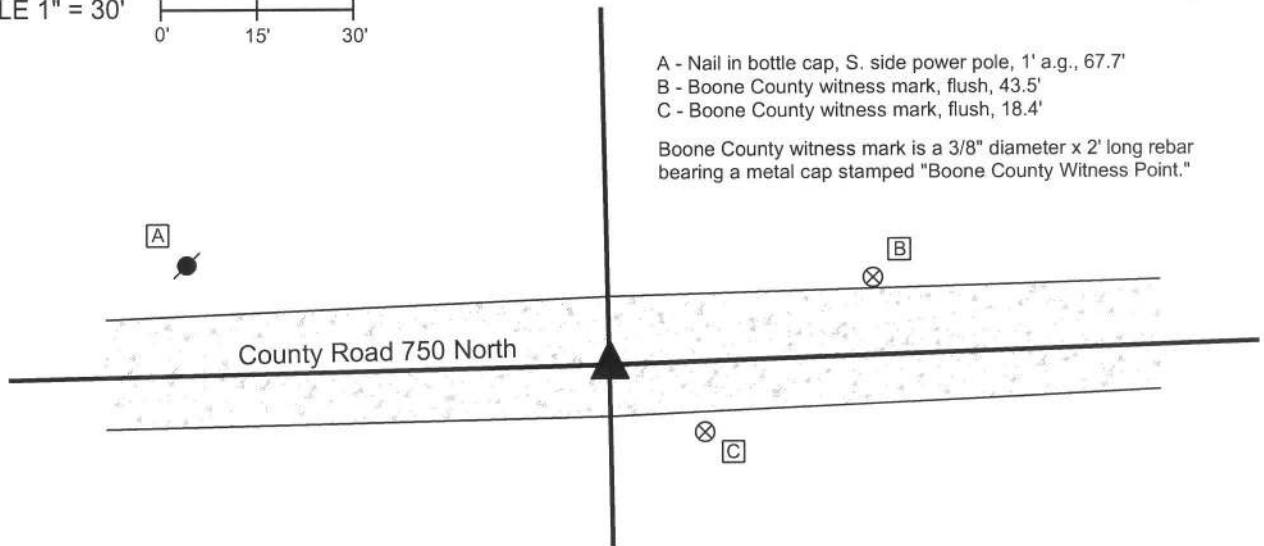
IN02\_T20NR2E29\_36

IN02\_T20NR2E30\_44



### CORNER WITNESS DETAIL

SCALE 1" = 30'



- A - Nail in bottle cap, S. side power pole, 1' a.g., 67.7'
- B - Boone County witness mark, flush, 43.5'
- C - Boone County witness mark, flush, 18.4'

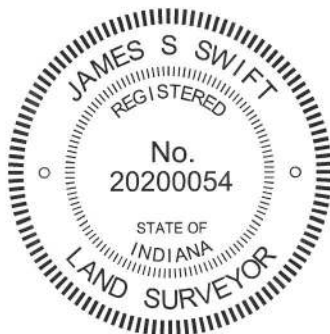
Boone County witness mark is a 3/8" diameter x 2' long rebar bearing a metal cap stamped "Boone County Witness Point."

The harrison monument was set over a stone found.

A BCS record of January 21-23, 1869 states "Reestablished from trees as Re-est. by Mr. Mullikin. Set two Rocks. One 12.12.5 1/2 marked +. Top Rock is 14.9.6 marked +." The reference to Mr. Millikin is thought to be a reference to James Mullikin, Boone County Surveyor from 1850 to 1852. A BCS tie card dated August 21, 1974 states "stone found."

This corner was excavated on September 19, 2013. Prior to excavation, a 5/8 inch diameter rebar was found at 5 inches deep in the gravel road. An orange rebar cap (markings illegible) was found nearby. Excavation revealed a stone found at 9 inches deep, south of the rebar. The stone appeared to have been knocked over, presumably by road grading equipment. Stood up, the stone measured 14 inches tall by 9 inches by 6 inches with a clearly etched "+" mark near the top. This stone was accepted as being the top stone described in the 1869 record. The stone was removed and another stone was found directly below at 19 inches deep. The lower stone appeared to be horizontal with a clearly etched "+" mark on top, which characteristics are consistent with other lower stones found at other corners where two stones, one above the other, have been found. The bottom stone was not measured but was accepted as being the lower stone in the 1869 record. The bottom stone was left in place and a harrison monument was set directly over the etched "+" mark on the stone. No ties remain from the 1974 tie card. It is not known whether the stone referred to in that record is the same as found. It has been observed at other corners that a common practice for BCS field crews from the late 1960s to early 1970s to remove a stone, if found, and replace it with either a vertical section of railroad rail or a section of 1/2 inch diameter rebar. The 5/8 inch rebar does not fit the character of monuments set by BCS field crews in that era. The found 5/8 inch rebar (removed during excavation) had been near the north edges of the stone, 0.7' north and 0.4' west of the mark found on the lower stone.

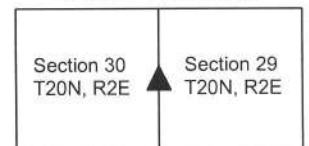
This corner was originally established as a wood post in 1821.



Kenneth E. Hedge, County Surveyor

James S. Swift, IN LS 20200054  
February 5, 2015

Marion Township



PHOTOGRAPHIC DOCUMENTATION

Date of photography: September 19, 2013

View of the upper stone as first exposed.



View of the upper stone, exposed and stood up.



View of the lower stone and rebar.



View from the east, looking across the upper stone (stood up) and west along C.R. 750 North to where it intersects U.S. 421 (Michigan Road.)



View of the lower stone, showing etched +.



For details and documentation, refer to related sheet "Section Corner Record."

# SECTION CORNER RECORD

NE 750-800

## BOONE COUNTY SURVEYOR'S OFFICE

State Plane grid coordinates NAD83 (CORS96):

North: 1786255.50 East: 3166643.95 (U.S. survey feet)

Type of monument: Harrison, 4" disk 'Section Corner'

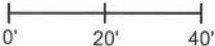
Depth: six inches below adjacent gravel road surface

Indiana tie card references:

IN02\_T20NR2E29\_44

IN02\_T20NR2E28\_36

### CORNER WITNESS DETAIL

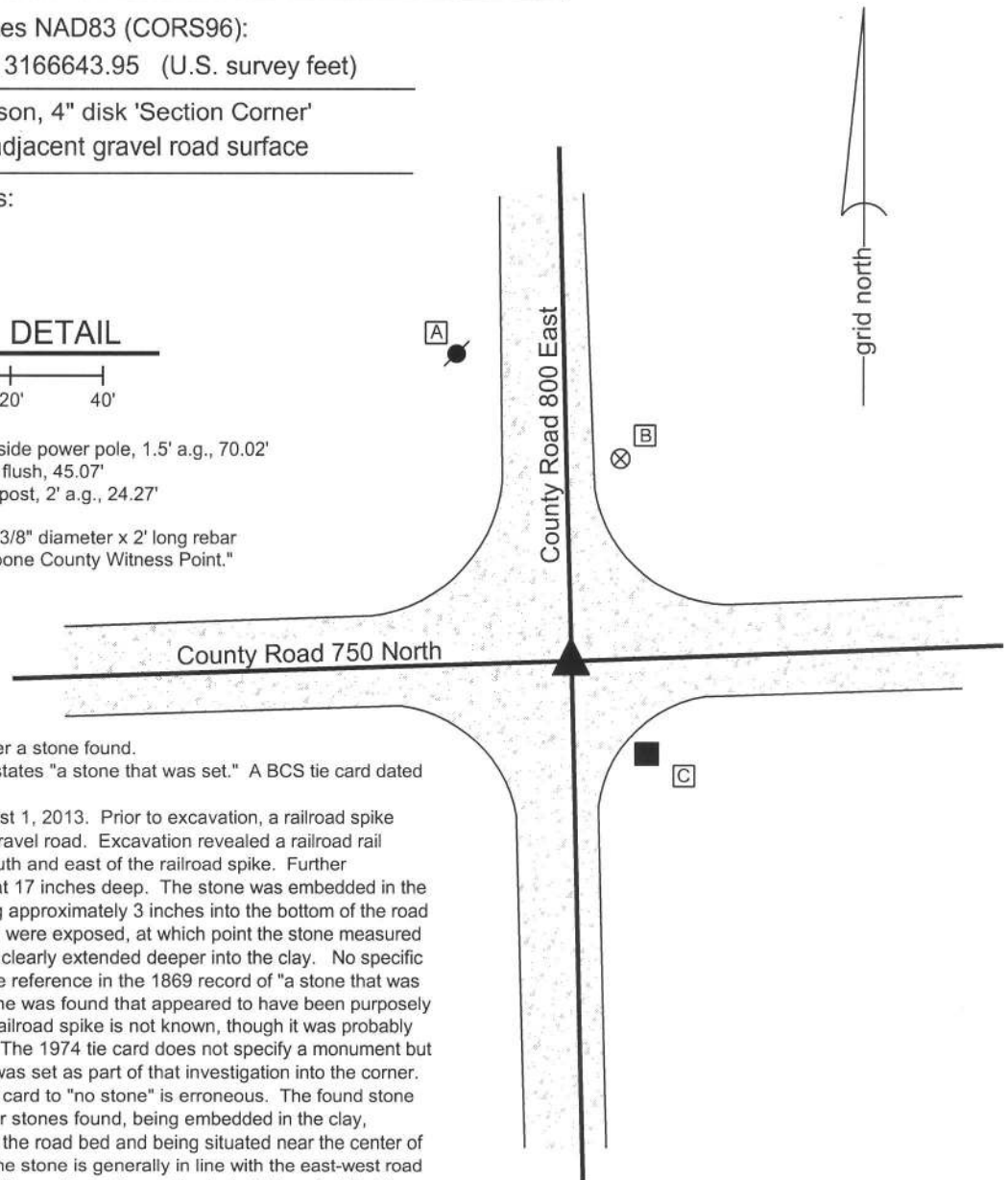
SCALE 1" = 40' 

A - Nail in bottle cap found in E. side power pole, 1.5' a.g., 70.02'

B - Boone County witness mark, flush, 45.07'

C - Mag nail set in N. side wood post, 2' a.g., 24.27'

Boone County witness mark is a 3/8" diameter x 2' long rebar bearing a metal cap stamped "Boone County Witness Point."



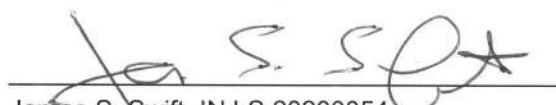
The harrison monument was set over a stone found.

A BCS record of January 23, 1869 states "a stone that was set." A BCS tie card dated July 24, 1974 states "no stone."

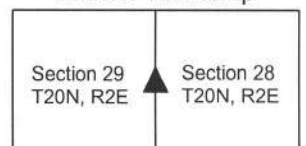
This corner was excavated on August 1, 2013. Prior to excavation, a railroad spike was found at 2 inches deep in the gravel road. Excavation revealed a railroad rail found at 10 inches deep, slightly south and east of the railroad spike. Further excavation revealed a stone found at 17 inches deep. The stone was embedded in the clay layer below the road, protruding approximately 3 inches into the bottom of the road bed. The top 10 inches of the stone were exposed, at which point the stone measured 14 inches E-W by 9 inches N-S and clearly extended deeper into the clay. No specific marks were found on the stone. The reference in the 1869 record of "a stone that was set" is interpreted as meaning a stone was found that appeared to have been purposely set by humans. The source of the railroad spike is not known, though it was probably set as a witness to the railroad rail. The 1974 tie card does not specify a monument but it is most likely that the railroad rail was set as part of that investigation into the corner. Clearly the reference in the 1974 tie card to "no stone" is erroneous. The found stone fits with the character of other corner stones found, being embedded in the clay, protruding slightly into the bottom of the road bed and being situated near the center of the intersection of the two roads. The stone is generally in line with the east-west road beds. It is towards the east edge of the north-south road beds, but it is noted that the corners to the north and south were also east of the center of County Road 800 East. The stone was accepted as the best evidence of the corner and a harrison monument was set over the top, high point of the stone. The railroad spike and railroad rail, both removed during excavation, had been 3 feet west and 1.3 feet north of the high point of the stone. This corner was originally established as a wood post in 1821.



  
Kenneth E. Hedge, County Surveyor

  
James S. Swift, IN LS 20200054  
February 5, 2015

Marion Township



PHOTOGRAPHIC DOCUMENTATION

Date of photography: August 1, 2013

View of the stone as first exposed.



View of the stone more fully exposed.



View from above the stone, looking North along County Road 800 East.



View from above the stone, looking South along County Road 800 East.



For details and documentation, refer to related sheet "Section Corner Record."

# SECTION CORNER RECORD

NE 800-750

## BOONE COUNTY SURVEYOR'S OFFICE

State Plane grid coordinates NAD83 (2011):

North: 1788814.91 East: 3163935.10 (U.S. survey feet)

Type of monument: Harrison, 4" disk 'Section Corner'

Depth: Ten inches above adjacent ground. (Flush with ground to N&E)

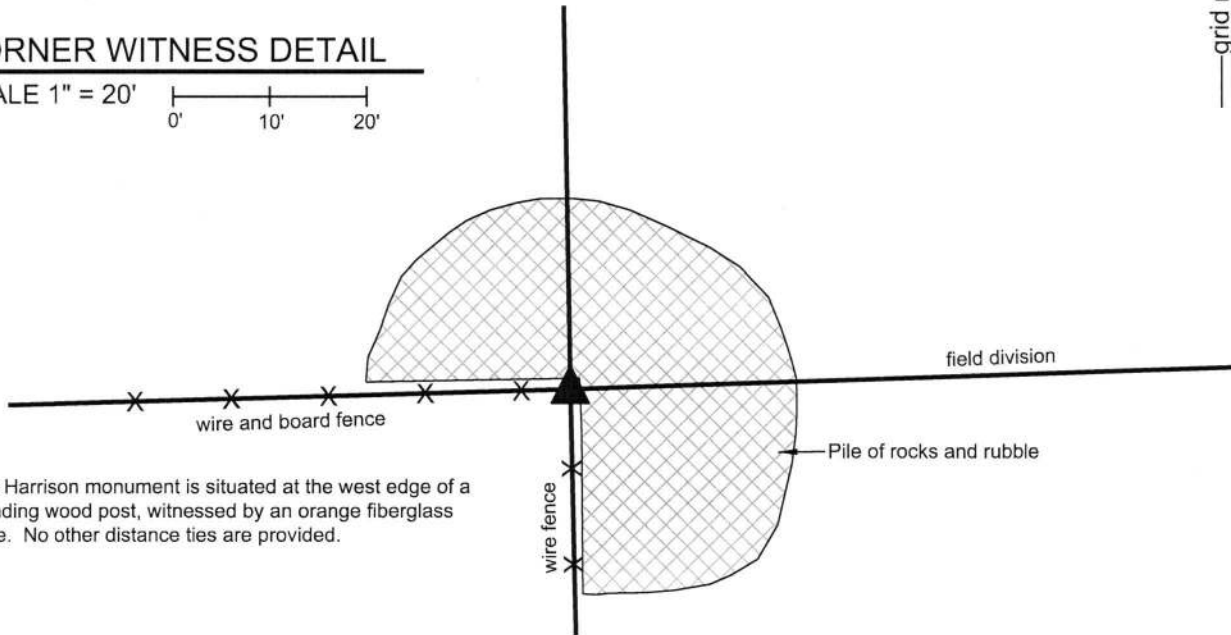
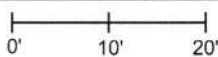
Indiana tie card references:

IN02\_T20NR2E20\_76 IN02\_T20NR2E29\_04



### CORNER WITNESS DETAIL

SCALE 1" = 20'

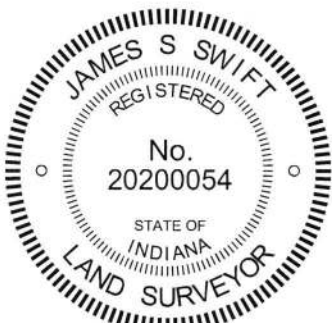


The Harrison monument is situated at the west edge of a standing wood post, witnessed by an orange fiberglass lathe. No other distance ties are provided.

The Harrison Monument was set over fragments of a cedar post found.

A BCS record of January 21-23, 1869 states, with respect to this corner, "Reestablished from Beech. Set two rocks. One 11.8.5 1/2 marked +. Top rock 12.11.6 1/2 marked +." No recent BCS tie cards were found referencing this corner.

Excavation was performed at this corner on March 2, 2018. A wood corner post was found at the intersection of fences to the south and west, in-line with a field division to the east. It is clearly evident that the ground around the post has been substantially disturbed in recent times. A pile of various rocks and rubble is situated to the north and east of the corner. Extensive probing and manual excavation around the post revealed several small rocks, broken pieces of tile and other various rubble. The ground / pile of rubble to the north and east is of higher elevation than the ground to the southwest of the post. Excavation at the southwest edge of the standing post revealed fragments of an older cedar post found at 18 inches deep. The stones described in the 1869 record were not found. While the ground southwest of the post was being excavated, various trash was found, including the casing of a modern shotgun shell found at 2 feet deep, well below the elevation of the surrounding ground. The presence of modern material at such a depth was accepted as confirmation that the area has been substantially disturbed relatively recently. The fragments of the cedar post appear to be generally in line with the standing fence to the south. The fragments of cedar post were accepted as the best available evidence of the corner. A Harrison monument was set over the older post, at the WSW edge of the standing post.



*Kenneth E. Hedge*  
Kenneth E. Hedge, County Surveyor

*James S. Swift*  
James S. Swift, IN LS 20200054  
March 7, 2018

Marion Township

Section 20  
T20N, R2E

Section 29  
T20N, R2E

# SECTION CORNER RECORD

NE 800-800

## BOONE COUNTY SURVEYOR'S OFFICE

State Plane grid coordinates NAD83 (CORS96):

North: 1788903.10 East: 3166578.27 (U.S. survey feet)

Type of monument: Harrison, 4" disk 'Section Corner'

Depth: six inches below adjacent gravel road surface

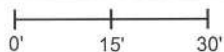
Indiana tie card references:

IN02\_T20NR2E20\_80 IN02\_T20NR2E21\_72

IN02\_T20NR2E29\_08 IN02\_T20NR2E28\_00

### CORNER WITNESS DETAIL

SCALE 1" = 30'



- A - Boone County witness mark, flush, 71.35'
- B - Mag nail set in E. side power pole, 2' a.g., 29.97'
- C - N.W. corner, concrete block garage, 30.17'
- D - S.W. corner, concrete block garage, 38.26'

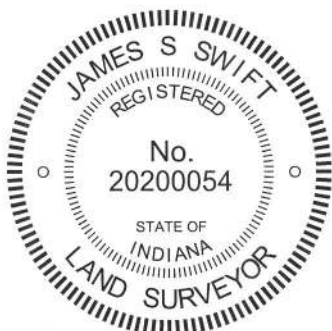
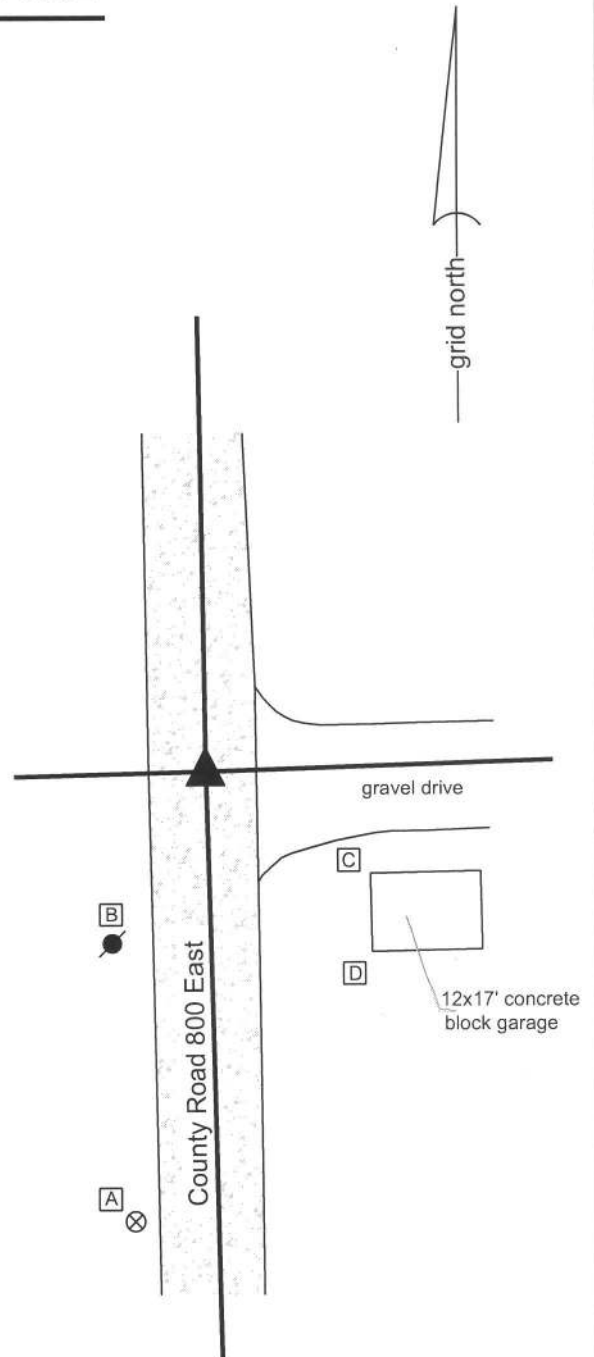
Boone County witness mark is a 3/8" diameter x 2' long rebar bearing a metal cap stamped "Boone County Witness Point."

The harrison monument was set over a stone found.

A BCS record of February 16, 1869 states "reestablished from trees (both green) Set two rocks one 17.13 by 5 in (+) Top One 19.17 by 13 in +." A BCS tie card dated August 23, 1974 states "wood stake found."

This corner was excavated on July 26, 2013. Prior to excavation, a railroad spike was found at 1 inch deep in the gravel road. Excavation revealed a stone found at 12 inches deep. The stone was embedded in the clay layer below the road, with the top of the stone at the bottom of the road bed. The stone is of an odd, triangular shape and specific N-S/E-W dimensions were difficult to positively identify. The top 7 inches of the stone were exposed, at which point the stone appeared to be approximately 14 inches N-S by 12 inches E-W. Using a probe, another stone was detected below at 13 inches from the top of the top stone. An etched "+" mark was clearly visible at the top of the stone, near the high point of the stone. The stone was accepted as marking the corner. Two rebars being 3/8 inch diameter x 2 feet long were driven at an angle near the northwest and southwest sides of the triangular shaped stone. The top 5 inches of the stone and the top of the rebars were all encased in concrete and a harrison monument (4 inch spacer with a lid) was set over the etched + mark on the stone. The railroad spike, removed during excavation, had been 0.3 foot south and 0.4 foot east.

This corner was originally established as a wood post in 1821.



*Kenneth E. Hedge*  
 Kenneth E. Hedge, County Surveyor

*James S. Swift*  
 James S. Swift, IN LS 20200054  
 February 5, 2015

Marion Township

|                         |                         |
|-------------------------|-------------------------|
| Section 20<br>T20N, R2E | Section 21<br>T20N, R2E |
| Section 29<br>T20N, R2E | Section 28<br>T20N, R2E |



PHOTOGRAPHIC DOCUMENTATION

Date of photography: July 26, 2013

View of the top, east side of the stone with the etched mark exposed.



View of the top, east side of the stone, washed.



View of the stone as first exposed and the post on the west side of the road.



View from the north, looking across the stone and south along County Road 800 East.



For details and documentation, refer to related sheet "Section Corner Record."