

SECTION CORNER RECORD

NW 750-400

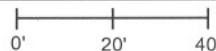
BOONE COUNTY SURVEYOR'S OFFICE

State Plane grid coordinates NAD83 (CORS96):
North: 1785250.88 East: 3103584.86 (U.S. survey feet)

Type of monument: Harrison, 4" disk 'Section Corner'
Depth: four inches above adjacent ground.

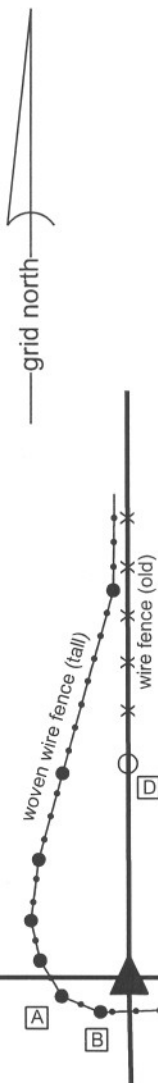
Indiana tie card references:
IN02_T20NR1W29_44 IN02_T20NR1W28_36

CORNER WITNESS DETAIL

SCALE 1" = 40' 

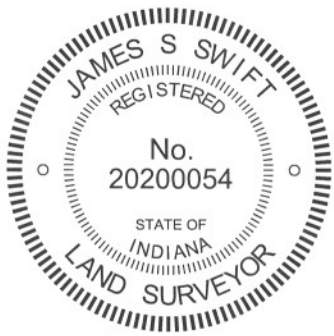
- A - N. edge, round steel post, 2' a.g., 14.76'
- B - N. edge, round steel post, 2' a.g., 9.45'
- C - N. edge, round steel post, 2' a.g., 15.34'
- D - Boone County witness mark, flush, 51.61'
- E - Rebar "Section Corner", flush, 44.72' (see notes)

Boone County witness mark is a 3/8" diameter x 2' long rebar bearing a metal cap stamped "Boone County Witness Point."

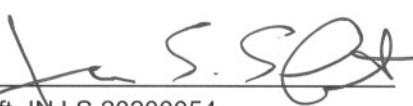


The harrison monument was set at a calculated position. This corner was investigated and monumented in the spring of 2010. Prior to the involvement of the Surveyor's Office, there existed considerable confusion as to whether the corner was at a position represented by a 5/8 inch diameter rebar bearing a red plastic cap stamed "Section Corner" or whether the corner was further south, in line with an ancient fence to the east. The confusion at the corner was exacerbated by wording in the deed for the adjacent land to the south and east which creates a small gap in deeds between the described north line of that property and the section line. Two surveys, one by MSE Surveying, MSE Corporation, recorded in Survey Book 3, pages 11-16 in the Office of the Boone County Recorder and another survey by Jerry L. Carter, dated January 19, 2008 were available for review. The two surveys show significantly different positions for the corner.

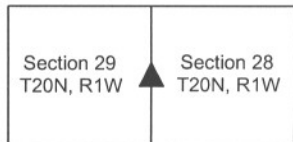
The position of the corner was computed from evidence found at various points along the section lines to the north and south, as documented in the records for Section 29, T20N, R1W in the BCS Sruveyors Record, and in agreement with the old fences to the north and east. A stone was found and held as the northeast corner of section 29, as discussed on the documentation for corner NW-800-400. A rebar was found and held as marking the southeast corner of section 29. This monument is shown as the corner on the Carter survey and is believed to replace the corner post shown as the corner on the MSE survey. A stone at the base of an old wood corner post with fences to the north, south and east was found marking the apparent N.E. corner of the S.E. 1/4 of the S.E. 1/4 of section 29. A BCS record dated May 20, 1905 states that this 1/16 th corner was established and a rock set at the split of the distance between the S.E. and E. quarter corners of section 29. Holding the rebar at the S.E. corner and the stone at the 1/16 th corner and prolonging the line between them for double the distance yields a position which is in line with the ancient fence to the east and precisely at the southerly extension of the ancient fence to the north. This position is close to the position for the corner believed to be held for the M.S.E. survey. It is 44.7 feet south of the rebar held as marking the corner on the Carter survey. While the specific source of the rebar is not known, Mr. Carter explained that he believed that it was set by field crews working for Anderson and Associates and that they set it next to the "old corner post." However, close inspection of the object adjacent to the rebar yields no evidence of it being a corner post and ample evidence that it was actually an old tree around which substantial amounts of wire were wrapped. The presence of this wire may be explained by the fact that the tree is at the edge of a steep slope to the south and represents the southerly terminus of that portion of the old north-south fence which was established on generally flat, stable ground. The corner, calculated as described above, falls along a wet hillside where a natrual spring apparently opens onto the ground, creating constant wetness and a much mud. Limited probing was performed in this area but it is believed that specific physical evidence of the actual corner has been washed away in the wetness and mud. In the spring of 2010 remnants of the old fence to the east were still present, including two old posts at approximately 300 feet east of the corner. These old posts fit precisely with the line extended from the calculated position of the corner to a railroad rail generally accepted as marking the center quarter corner of the section and documented on a BCS tie card dated October 1969. Mr. Lloyd Hayden, the adjacent land-owner to the north and east of the corner, states his knowledge that the old fence has long been accepted as marking the line between the properties and was used for containing livestock through much of the 20th century. The calculated position of the corner was found to agree with all of the available local evidence except the capped rebar and wire-wrapped tree. Upon review of the evidence, Mr. Carter accepted the calculated position for the corner and acknowledged the lack of supporting evidence for the rebar. The calculated position was held as marking the corner and a harrison monument was set at this position on March 30, 2010. Mr. Carter held the harrison monument as the corner for purposes of staking the adjacent lines. Substantial, new woven wire fences were constructed in this vicinity after the harrison monument was set.




Kenneth E. Hedge, County Surveyor


James S. Swift, IN LS 20200054
March 30, 2012

Washington Township



SECTION CORNER RECORD

BOONE COUNTY SURVEYOR'S OFFICE

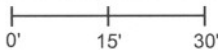
NW 800-400

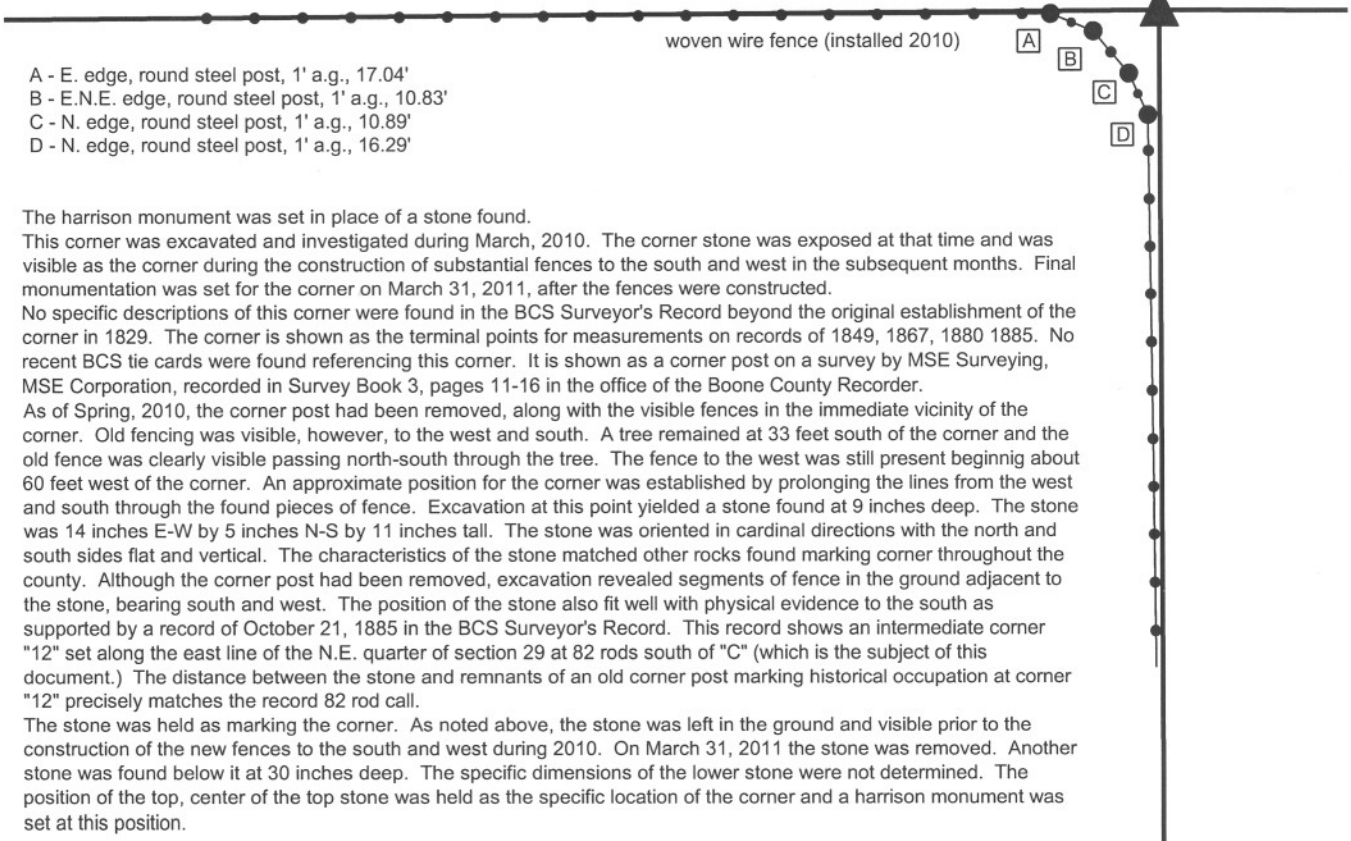
State Plane grid coordinates NAD83 (NSRS 2007):
 North: 1787920.85 East: 3103576.93 (U.S. survey feet)

Type of monument: Harrison, 4" disk 'Section Corner'
 Depth: four inches above adjacent ground

Indiana tie card references:
 IN02_T20NR1W20_80 IN02_T20NR1W21_72
 IN02_T20NR1W29_08 IN02_T20NR1W28_00

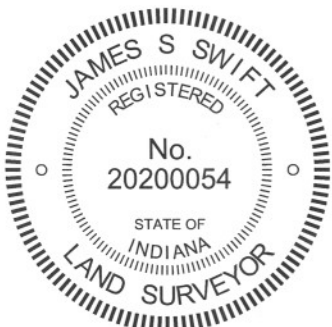
CORNER WITNESS DETAIL

SCALE 1" = 30' 




- A - E. edge, round steel post, 1' a.g., 17.04'
- B - E.N.E. edge, round steel post, 1' a.g., 10.83'
- C - N. edge, round steel post, 1' a.g., 10.89'
- D - N. edge, round steel post, 1' a.g., 16.29'

The harrison monument was set in place of a stone found. This corner was excavated and investigated during March, 2010. The corner stone was exposed at that time and was visible as the corner during the construction of substantial fences to the south and west in the subsequent months. Final monumentation was set for the corner on March 31, 2011, after the fences were constructed. No specific descriptions of this corner were found in the BCS Surveyor's Record beyond the original establishment of the corner in 1829. The corner is shown as the terminal points for measurements on records of 1849, 1867, 1880 1885. No recent BCS tie cards were found referencing this corner. It is shown as a corner post on a survey by MSE Surveying, MSE Corporation, recorded in Survey Book 3, pages 11-16 in the office of the Boone County Recorder. As of Spring, 2010, the corner post had been removed, along with the visible fences in the immediate vicinity of the corner. Old fencing was visible, however, to the west and south. A tree remained at 33 feet south of the corner and the old fence was clearly visible passing north-south through the tree. The fence to the west was still present beginning about 60 feet west of the corner. An approximate position for the corner was established by prolonging the lines from the west and south through the found pieces of fence. Excavation at this point yielded a stone found at 9 inches deep. The stone was 14 inches E-W by 5 inches N-S by 11 inches tall. The stone was oriented in cardinal directions with the north and south sides flat and vertical. The characteristics of the stone matched other rocks found marking corner throughout the county. Although the corner post had been removed, excavation revealed segments of fence in the ground adjacent to the stone, bearing south and west. The position of the stone also fit well with physical evidence to the south as supported by a record of October 21, 1885 in the BCS Surveyor's Record. This record shows an intermediate corner "12" set along the east line of the N.E. quarter of section 29 at 82 rods south of "C" (which is the subject of this document.) The distance between the stone and remnants of an old corner post marking historical occupation at corner "12" precisely matches the record 82 rod call. The stone was held as marking the corner. As noted above, the stone was left in the ground and visible prior to the construction of the new fences to the south and west during 2010. On March 31, 2011 the stone was removed. Another stone was found below it at 30 inches deep. The specific dimensions of the lower stone were not determined. The position of the top, center of the top stone was held as the specific location of the corner and a harrison monument was set at this position.




 Kenneth E. Hedge, County Surveyor


 James S. Swift, IN LS 20200054
 March 30, 2012

Washington Township

Section 20 T20N, R1W	Section 21 T20N, R1W
Section 29 T20N, R1W	Section 28 T20N, R1W

PHOTOGRAPHIC DOCUMENTATION

Date of photography: March 19, 2010 & March 31, 2011

The stone as first exposed on March 19, 2010, along with remnants of wire embedded in the dirt.



The harrison monument set on March 31, 2011.



View from the north, looking across the stone and south along the fence constructed in 2010.



View from the east, looking across the stone and west along the fence constructed in 2010.



For details and documentation, refer to related sheet "Section Corner Record."

SECTION CORNER RECORD

NW 800-450

BOONE COUNTY SURVEYOR'S OFFICE

State Plane grid coordinates NAD83 (2011):

North: 1787903.63 East: 3100934.98 (U.S. survey feet)

Type of monument: Harrison, 4" disk 'Section Corner'

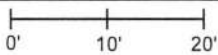
Depth: Four inches above adjacent ground

Indiana tie card references:

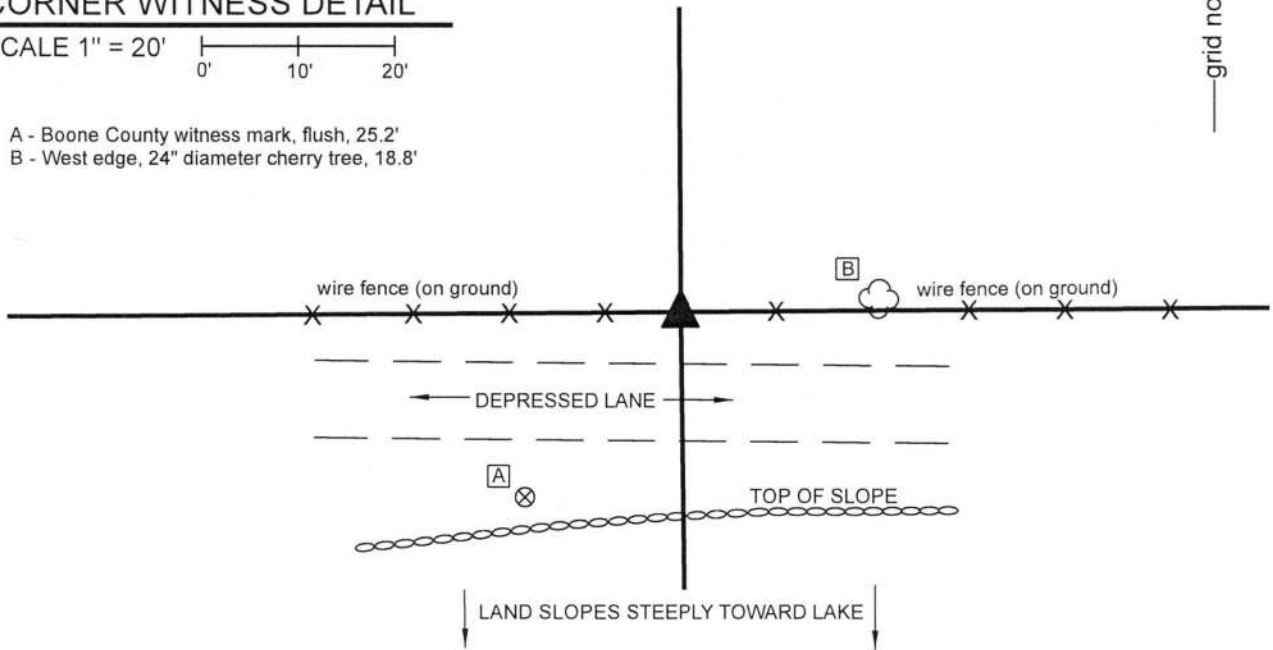
IN02_T20NR1W20_76 IN02_T20NR1W29_04

CORNER WITNESS DETAIL

SCALE 1" = 20'



- A - Boone County witness mark, flush, 25.2'
- B - West edge, 24" diameter cherry tree, 18.8'



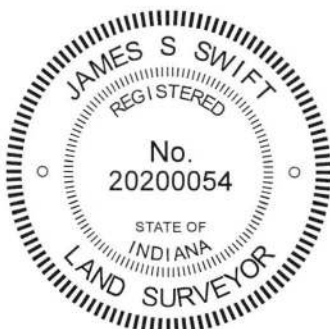
The Harrison monument was set in place of an ancient wood post.

A BCS Record of March 15, 1863 states, with respect to this corner, "Reest'd from one original tree. Had been previously blocked out, was considerably decayed but mark still visible. Set two rocks. Under one 7.7.5 1/2 marked +. Top one 16x12x8 marked notch across top."


No recent BCS tie cards were found referencing this corner.

Excavation was performed at this corner on November 8-9, 2018. An ancient wood post was found in an east-west fence line, fence mostly down but partially attached to the ancient post. The post appeared in the field to represent the old corner post, as the post was clearly not a line post. The fencing attached to each side was wrapped in a manner to indicate that the post was the terminus of old fences to the east and west. The record top stone was found several feet northeast of the post. The stone matched the dimensions of 16 x 12 x 8 inches and had a clearly visible mark etched across a portion of the rock. However, the stone was partially embedded in the ground in a haphazard orientation and appeared to have been displaced from its original position. No other stone was found below this rock. The stone was accepted as being the record top stone called in the 1863 record but was not held as marking the corner due to the apparent positional disturbance. Excavation around the post revealed numerous stones, none of which matched the dimensions of the lower stone described in the 1863 record. A stone at the southeast corner of the post was found at 28 inches deep but was determined to be too large to represent the record lower stone. Given the character of how the wire was attached to the post and the immediate proximity of the top stone called in the 1863 record, the ancient post was accepted as representing the best available evidence of the corner and was held as marking the corner. The post was removed and replaced with a Harrison monument in the same position.

This corner was originally established as a wood post in 1829.




Kenneth E. Hedge, County Surveyor


James S. Swift, IN LS 20200054
November 20, 2018

Washington
Township

Section 20
T20N, R1W

Section 29
T20N, R1W

SECTION CORNER RECORD

NW 800-500

BOONE COUNTY SURVEYOR'S OFFICE

State Plane grid coordinates NAD83 (CORS96):

North: 1787883.84 East: 3098276.56 (U.S. survey feet)

Type of monument: etched "+" on top of stone

Depth: One inch above adjacent ground


Indiana tie card references:

IN02_T20NR1W19_80 IN02_T20NR1W20_72

IN02_T20NR1W30_08 IN02_T20NR1W29_00

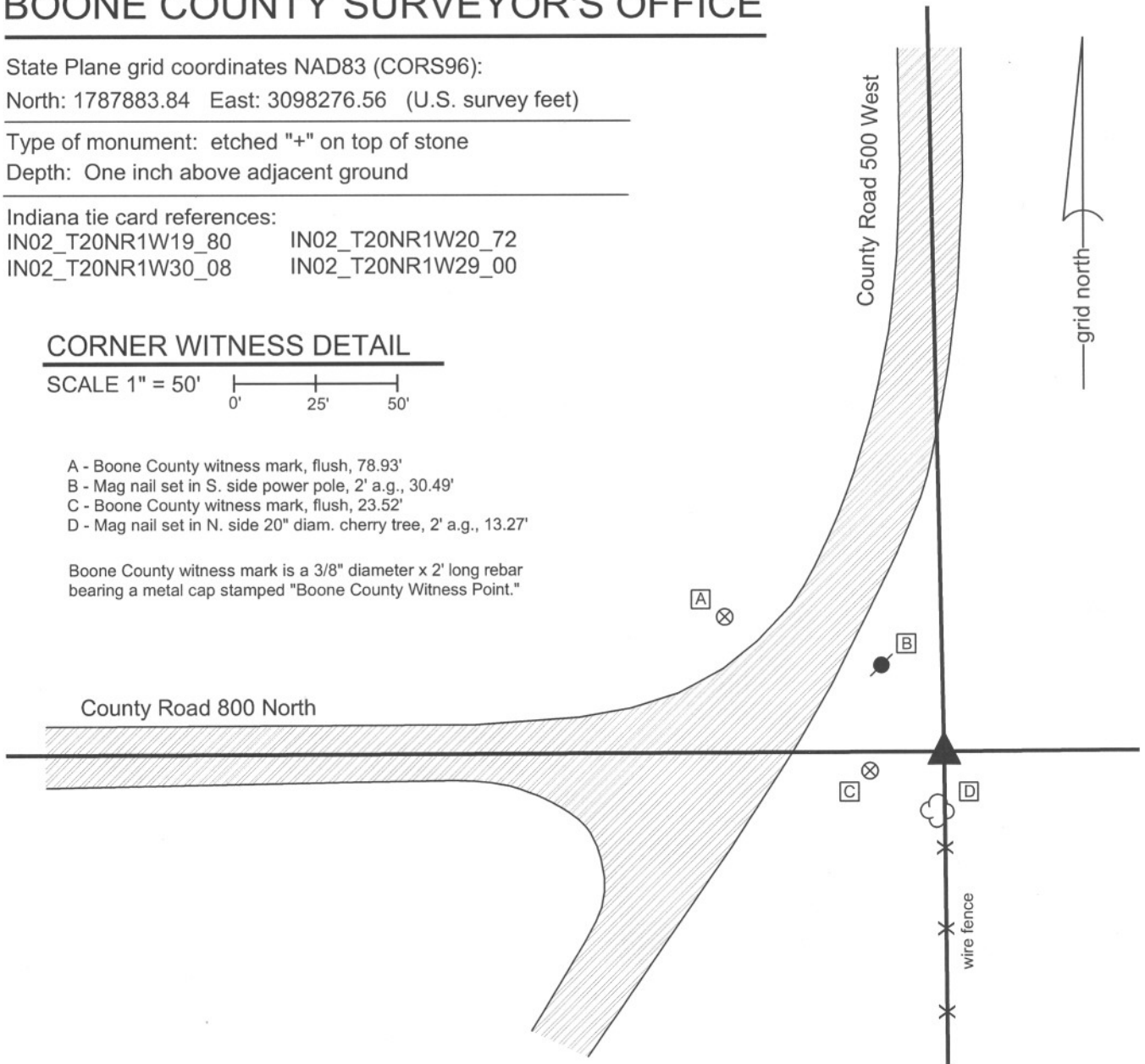
CORNER WITNESS DETAIL

SCALE 1" = 50'



- A - Boone County witness mark, flush, 78.93'
- B - Mag nail set in S. side power pole, 2' a.g., 30.49'
- C - Boone County witness mark, flush, 23.52'
- D - Mag nail set in N. side 20" diam. cherry tree, 2' a.g., 13.27'

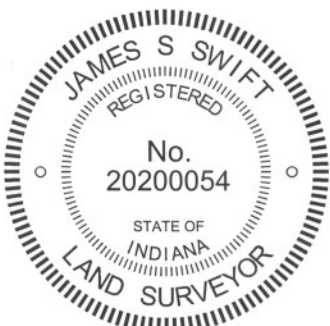
Boone County witness mark is a 3/8" diameter x 2' long rebar bearing a metal cap stamped "Boone County Witness Point."



The stone was found in place.

The corner is shown as present but not described on a BCS record of July 6, 1832. A BCS record of March 2, 1863 states "One bearing tree green: Stone at corner recognized by previous surveys and by the persons interested." A BCS tie card dated November 8, 1967 states "exposed stone with + beside corner post did not replace."

The stone is situated at the northwest corner of a wood end post. The post is the northerly terminus of an old fence to the south. The stone is at the easterly extension of the county road to the west and the southerly extension of the county road to the north and fits well with surrounding corners. The stone was accepted as marking the corner and was left in place as found.



Kenneth E. Hedge
Kenneth E. Hedge, County Surveyor

James S. Swift
James S. Swift, IN LS 20200054
March 30, 2012

Washington Township

Section 19 T20N, R1W	Section 20 T20N, R1W
Section 30 T20N, R1W	Section 29 T20N, R1W

PHOTOGRAPHIC DOCUMENTATION

Date of photography: May 5, 2010

The stone at the base of the post. View from the west.



View of the stone from above.



For details and documentation, refer to related sheet "Section Corner Record."