

SECTION CORNER RECORD

BOONE COUNTY SURVEYOR'S OFFICE

NE 100-100

State Plane grid coordinates NAD83 (CORS96):

North: 1750906.16 East: 3129844.97 (U.S. survey feet)

Type of monument: Harrison, 4" disk 'Section Corner'

Depth: One inch below adjacent road surface

Indiana tie card references:

IN02_T19NR1E30_80 IN02_T19NR1E29_72

IN02_T19NR1E31_08 IN02_T19NR1E32_00

CORNER WITNESS DETAIL

SCALE 1" = 40'

- A - Boone County witness mark, flush, 28.54'
- B - Mag nail found in W. side, wood corner post, 3 in. a.g., 34.65'
- C - Mag nail found in N. side power pole, 4 in. a.g., 15.20'
- D - Mag spike found in E. side power pole, 14 in. a.g., 12.10'

Boone County witness mark is a 3/8" diameter x 2' long rebar bearing a metal cap stamped "Boone County Witness Point."

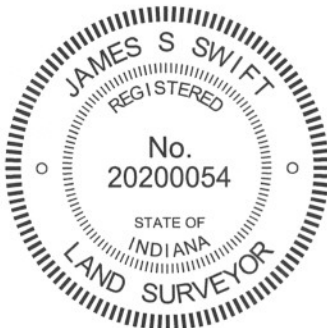
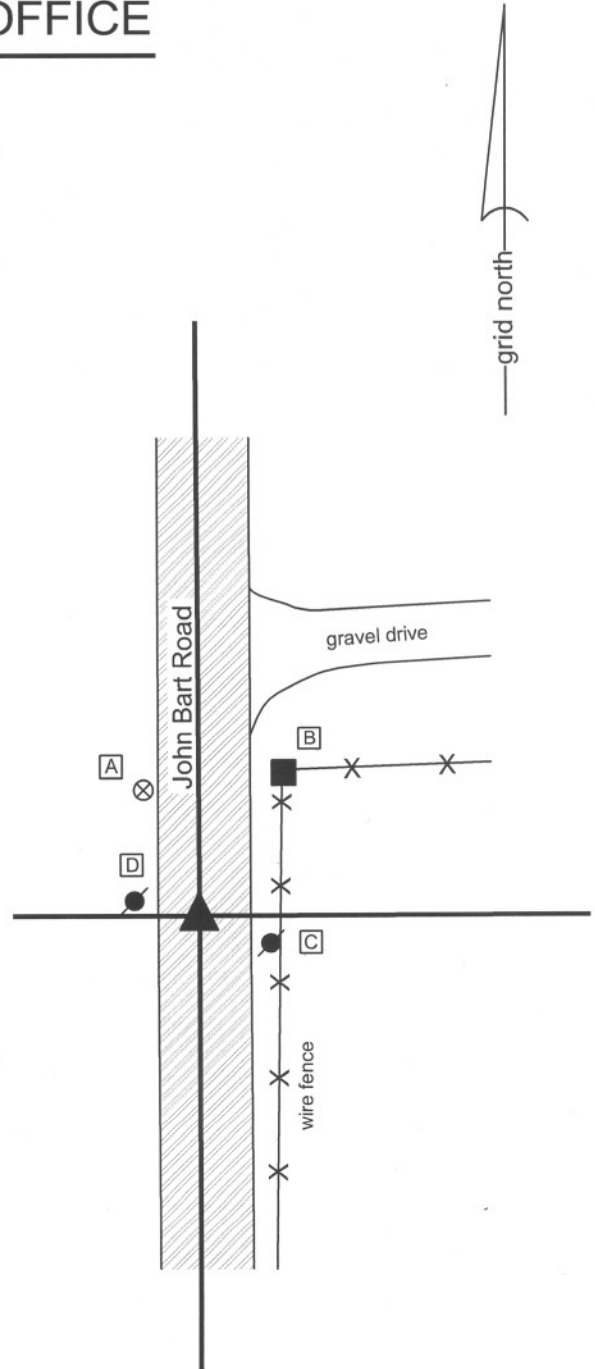
The harrison monument was found in place.

No specific descriptions of this corner were found in the BCS Surveyor's Record. An undated tie card believed to date from the late 1960s (most likely from 1968) shows the corner as a stone found, R.R. rail set, with attribution to the crew of "Ken and J.R." A tie card dated August 2, 2005 shows the corner as a harrison monument with no documentation of source.

It is known that it was common practice for crews in the late 1960s and early 1970s to remove a corner stone, if found, and replace it with a railroad rail set vertically. The 2005 tie card does not document the monument found or replaced when the harrison monument was set, but the distance ties generally agree with the ties from the earlier tie card.

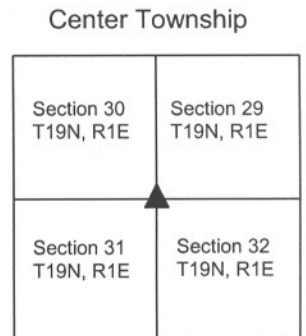
No excavation was performed at this corner. The harrison monument appears to be stable and is believed to be in the same position as the stone found previously. The harrison monument was held as marking the corner.

This corner was originally established as a wood post in June, 1822.



Kenneth E. Hedge
Kenneth E. Hedge, County Surveyor

James S. Swift
James S. Swift, IN LS 20200054
January 15, 2013



SECTION CORNER RECORD

NE 100-150

BOONE COUNTY SURVEYOR'S OFFICE

State Plane grid coordinates NAD83 (CORS96):

North: 1750915.78 East: 3132491.86 (U.S. survey feet)

Type of monument: Harrison, 4" disk 'Section Corner'

Depth: Four inches above adjoining ground

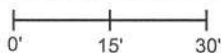
Indiana tie card references:

IN02_T19NR1E29_76

IN02_T19NR1E32_04

CORNER WITNESS DETAIL

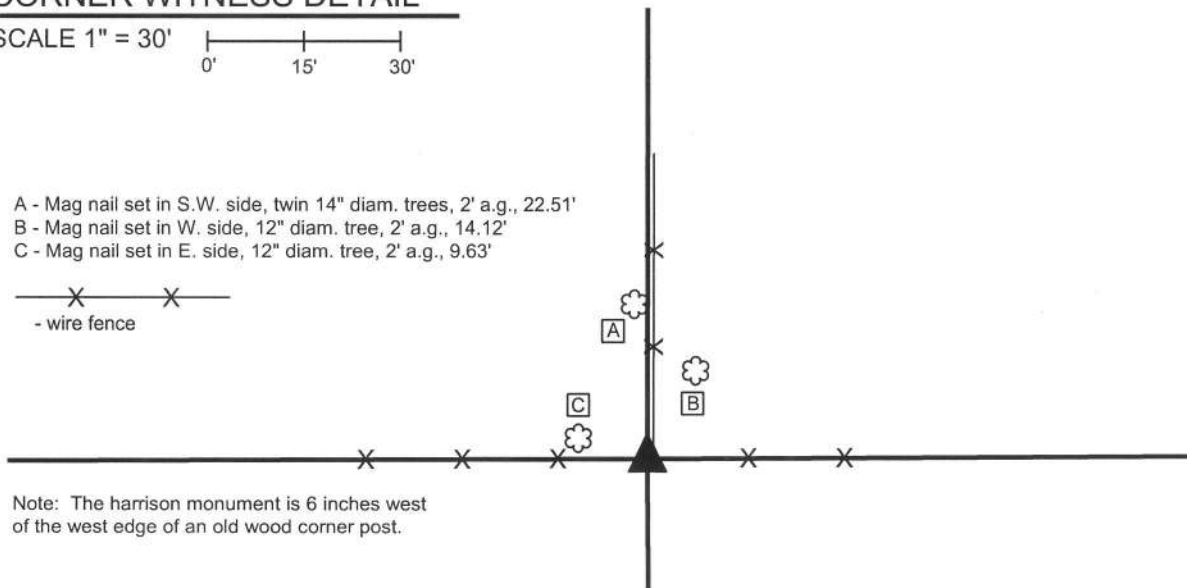
SCALE 1" = 30'



- A - Mag nail set in S.W. side, twin 14" diam. trees, 2' a.g., 22.51'
- B - Mag nail set in W. side, 12" diam. tree, 2' a.g., 14.12'
- C - Mag nail set in E. side, 12" diam. tree, 2' a.g., 9.63'



- wire fence



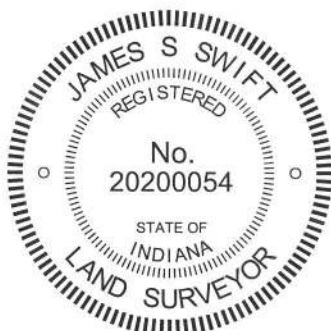
Note: The harrison monument is 6 inches west of the west edge of an old wood corner post.

The harrison monument was set in place of a stone found.

No specific descriptions of this corner were found in the BCS Surveyor's Record. The corner is mentioned as the terminal point for measurements in records of 1834, 1837 and 1883. No recent tie cards were found referencing this corner.

Excavation of this corner took place on November 15, 2012. A wood post was found at the intersection of fences to the north, east and west. A stone was found at the west edge of the post. The stone did not appear to be a brace rock for the post and did appear to have been purposely set as a corner marker. The top of the stone was approximately 3 inches below grade, covered with dirt and leaves. The stone had a distinct N-S ridge with a clearly identifiable high point. The stone measured 12 inches North-South by 7 inches East-West. The high point on the top N-S ridge was 6 inches west of the center of the west edge of the adjacent wood corner post. Once removed, the stone was found to be 16 inches tall. The stone was clearly vertical and oriented in cardinal directions. Many other rocks were found in immediate vicinity of this post, all of which appear to be field stones which had been placed near the corner for the convenience of agricultural practices. The stone adjacent to the corner post was distinctly different in placement and orientation than all of the other stones. The stone was held as marking the corner. The stone was removed and replaced in the same position with a harrison monument set in concrete within a section of HDPE storm pipe.

This corner was originally established as a wood post in June, 1822.



Kenneth E. Hedge
Kenneth E. Hedge, County Surveyor

James S. Swift
James S. Swift, IN LS 20200054
April 10, 2013

Center Twp

Section 29
T19N, R1E

Section 32
T19N, R1E

PHOTOGRAPHIC DOCUMENTATION

Date of photography: November 14-15, 2012

View of the corner post prior to excavation.



View of the stone as first exposed.



View of the post and exposed stone.



For details and documentation, refer to related sheet "Section Corner Record."

View of the stone more fully exposed.



The post and the set harrison monument.
The corner stone is on the ground, to the right of the post, behind the fence.



View of the stone more fully exposed.

SECTION CORNER RECORD

BOONE COUNTY SURVEYOR'S OFFICE

NE 100-200

State Plane grid coordinates NAD83 (CORS96):
 North: 1750931.27 East: 3135138.96 (U.S. survey feet)

Type of monument: Harrison, 4" disk 'Section Corner'
 Depth: six inches below adjacent gravel road surface

Indiana tie card references:
 IN02_T19NR1E29_80 IN02_T19NR1E28_72
 IN02_T19NR1E32_08 IN02_T19NR1E33_00

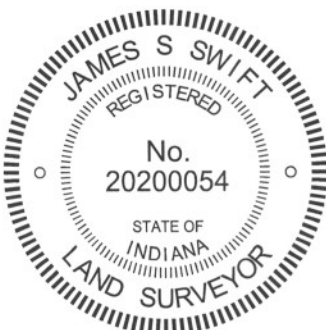
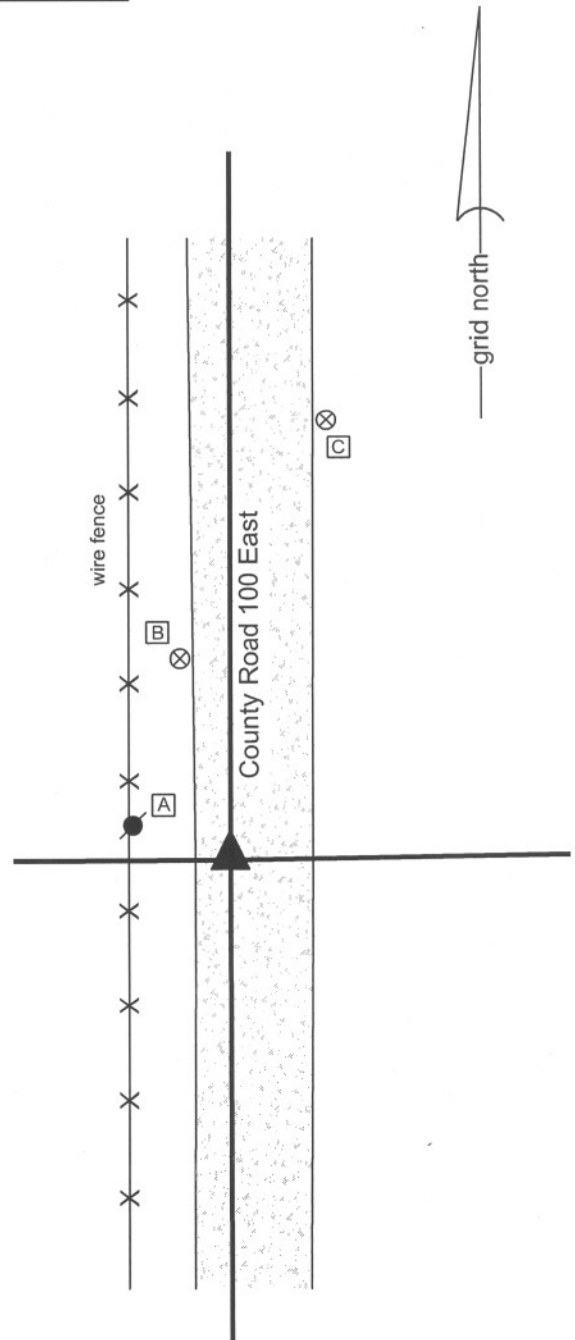
CORNER WITNESS DETAIL

SCALE 1" = 30'

- A - Mag nail set in W. side power pole, 2' a.g., 14.60'
- B - Boone County witness mark, flush, 32.15'
- C - Boone County witness mark, flush, 70.40'

Boone County witness mark is a 3/8" diameter x 2' long rebar bearing a metal cap stamped "Boone County Witness Point."

The harrison monument was set in place of a stone found and directly over a vertical section of clay tile found.
 A BCS Record dated April 1, 1893 states "Found from Walnut Stump, Red Oak (about 3 links further than call). Set rock mark + 22.10.10 at corner. 4 inch tile filled with sand and gravel under." A BCS tie card dated August 1, 2005 shows the corner as a harrison monument with no documentation of source.
 This corner was excavated on June 20, 2012. Prior to excavation a harrison monument was found at 1-1/2 inches below grade, the position of which agrees with the 2005 distance ties. Excavation revealed the record stone found at 2 inches below grade. The stone is leaning slightly WNW. As stood up top of the stone was at the surface of the gravel road. The top of the stone measures 8 inches N-S by 8 inches E-W. The stone was well embedded in the clay layer below the road bed, protruding approximately 6 inches out of the clay, which depth represents the entire thickness of the existing road bed. The stone was removed and found to measure 10 inches by 10 inches by 20 inches tall, in agreement with the 1893 record. No specific marking were detected on the stone. Directly below the stone, the top of a vertical piece of 4 inch diameter clay tile was found, also in agreement with the 1893 record. The tile was left in place and a harrison monument was set over it, in place of the stone.
 The harrison monument documented on the 2005 tie card was removed during excavation. This monument had been 1.4 feet east and 3.1 feet north of the stone and clay tile.
 This corner was originally established as a wood post in June, 1822.



Kenneth E. Hedge
 Kenneth E. Hedge, County Surveyor

James S. Swift
 James S. Swift, IN LS 20200054
 January 15, 2013

Center Township

Section 29 T19N, R1E	Section 28 T19N, R1E
Section 32 T19N, R1E	Section 33 T19N, R1E

PHOTOGRAPHIC DOCUMENTATION

Date of photography: June 20, 2012

The stone as originally found leaning.
View from the east.



The stone stood up.
View from the east.



The stone stood up.
View from the north.



Top of the piece of tile from above.



For details and documentation, refer to related sheet "Section Corner Record."

SECTION CORNER RECORD

BOONE COUNTY SURVEYOR'S OFFICE


NE 150-100

State Plane grid coordinates NAD83 (CORS96):
 North: 1753540.24 East: 3129831.70 (U.S. survey feet)

Type of monument: Harrison, 4" disk 'Section Corner'
 Depth: One inch below adjacent road surface

Indiana tie card references:
 IN02_T19NR1E29_36
 IN02_T19NR1E30_44

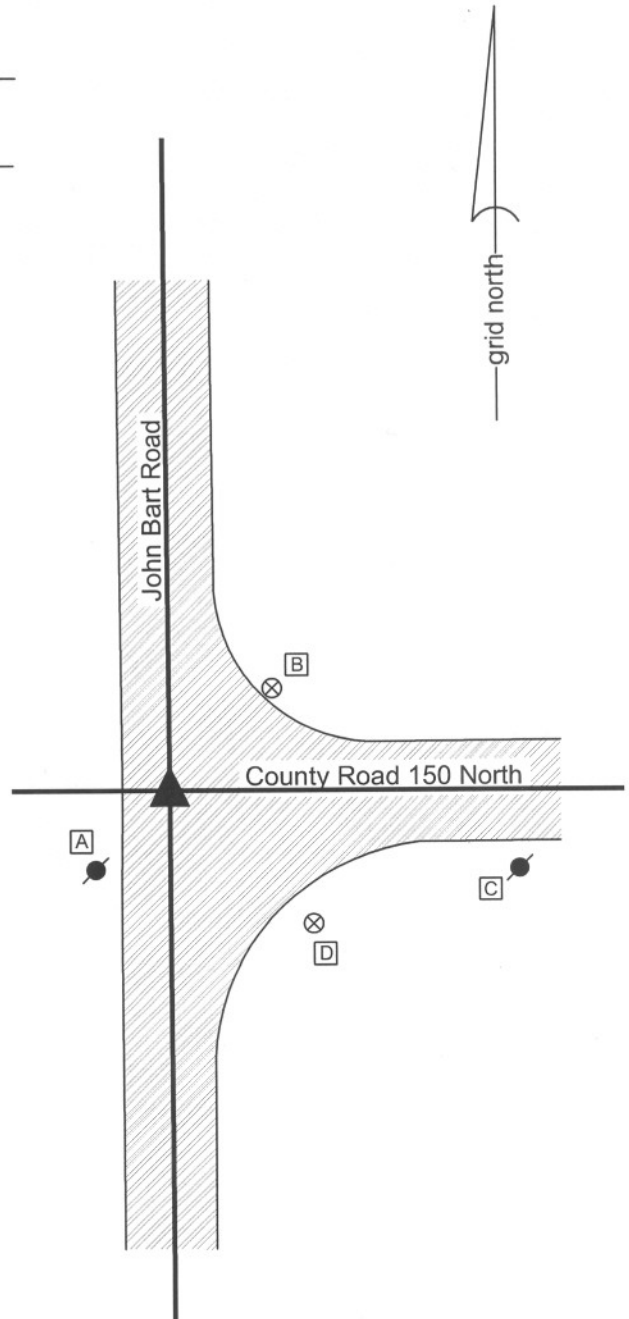
CORNER WITNESS DETAIL

SCALE 1" = 40' 

- A - Mag nail set in N.E. side power pole, 1' a.g., 20.57'
- B - Boone County witness mark, flush, 30.20'
- C - Mag nail set in W. side power pole, 1' a.g., 73.10'
- D - Boone County witness mark, flush, 40.74'

Boone County witness mark is a 3/8" diameter x 2' long rebar bearing a metal cap stamped "Boone County Witness Point."

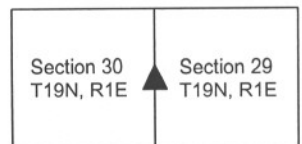
The harrison monument was set in place of a harrison monument found. A BCS record dated October 1, 1870 states "Reestablished from stumps. Rock 25.12.1." A BCS tie card dated August 2, 2005 shows the corner as a harrison monument with no documentation of source. This corner was excavated on June 26, 2012. Prior to excavation, a harrison monument was found at 2 inches below grade, in conformity with the 2005 distance ties. Excavation revealed a railroad rail found at 14 inches deep, directly below the harrison monument. Excavation of a 5 foot N-S by 5 foot E-W area centered on the harrison revealed no further evidence of the corner. Excavation was performed to a depth of 30 inches. The bottom of the road bed was found at approximately 26 inches deep. A new harrison monument was set in place of the found monument. This corner was originally established as a wood post in June, 1822.



Kenneth E. Hedge
 Kenneth E. Hedge, County Surveyor

James S. Swift
 James S. Swift, IN LS 20200054
 January 15, 2013

Center Township



SECTION CORNER RECORD

BOONE COUNTY SURVEYOR'S OFFICE

NE 150-200

State Plane grid coordinates NAD83 (CORS96):
 North: 1753567.88 East: 3135140.10 (U.S. survey feet)

Type of monument: Harrison, 4" disk 'Section Corner'
 Depth: six inches below adjacent gravel road surface

Indiana tie card references:
 IN02_T19NR1E28_36
 IN02_T19NR1E29_44



CORNER WITNESS DETAIL

SCALE 1" = 40' 0' 20' 40'

- A - Mag nail set in W. side power pole, 1' a.g., 12.17'
- B - Boone County witness mark, flush, 47.14'
- C - S.E. corner of barn (aluminum siding), 48.20'

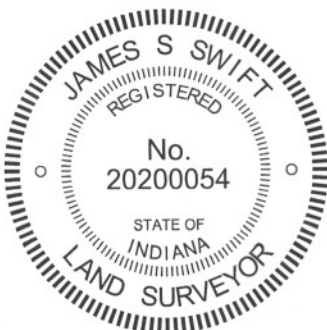
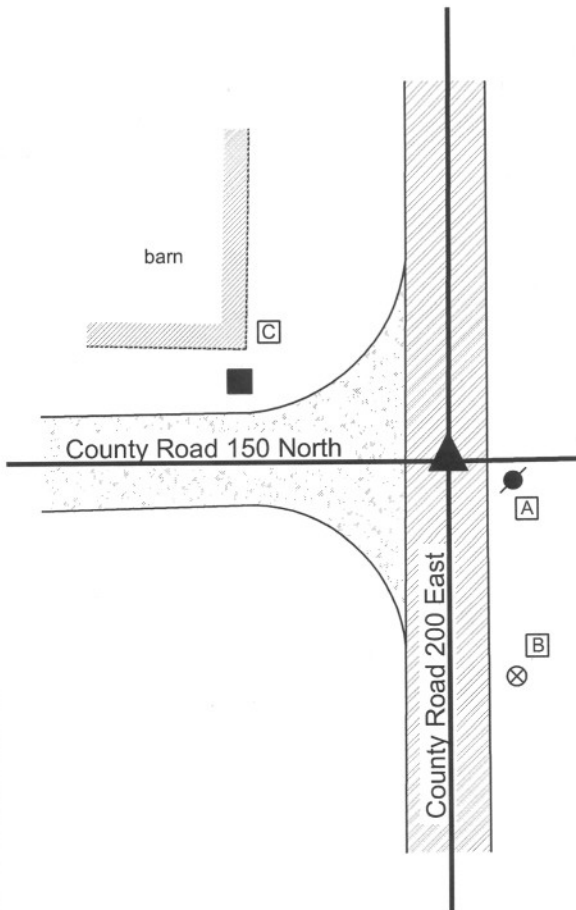
Boone County witness mark is a 3/8" diameter x 2' long rebar bearing a metal cap stamped "Boone County Witness Point."

The harrison monument was set in place of a vertical section of railroad rail found. A BCS record of October 29, 1868 states "Reestablished from the Oak B.T. Set Rock 19.8 by 6 in. marked +." A BCS tie card dated May 12, 1967 states "No stone found." A BCS tie card dated July 28, 2005 shows the corner as a harrison monument with no documentation of source.

This corner was excavated on June 20, 2012. Prior to excavation a vertical section of railroad rail was found at 11 inches deep in the approximate center of the intersection. Excavation revealed several rocks in the vicinity of the rail. None of the rocks matched the dimensions described in the 1868 record, nor did any of the rocks fit the characteristics of purposely set corner stones found at other corners throughout the county. The rocks were neither vertical nor set in cardinal directions and were found in the fill material of the road rather than embedded in the clay layer below the road. The record stone was not found in an area of excavation extending 5 feet N, 3 feet S, 5-1/2 feet W and 2-1/2 feet E of the rail. Excavation was performed to approximately 25 inches deep, slightly into the clay layer below the road bed.

The found railroad rail was held as marking the corner and was replaced with a harrison monument in the same position. The harrison monument shown on the 2005 tie card was not found.

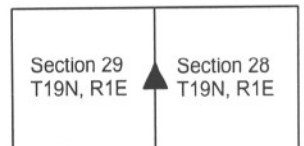
This corner was originally established as a wood post in June, 1820.



Kenneth E. Hedge
 Kenneth E. Hedge, County Surveyor

James S. Swift
 James S. Swift, IN LS 20200054
 January 15, 2013

Center Township



SECTION CORNER RECORD

BOONE COUNTY SURVEYOR'S OFFICE

NE 200-100

State Plane grid coordinates NAD83 (CORS96):
 North: 1756190.19 East: 3129814.17 (U.S. survey feet)

Type of monument: Harrison, 4" disk 'Section Corner'
 Depth: One inch below adjacent road surface

Indiana tie card references:
 IN02_T19NR1E19_80 IN02_T19NR1E20_72
 IN02_T19NR1E30_08 IN02_T19NR1E29_00

CORNER WITNESS DETAIL

SCALE 1" = 40'
 0' 20' 40'

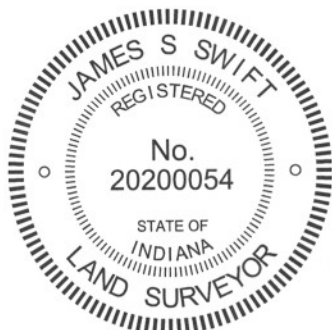
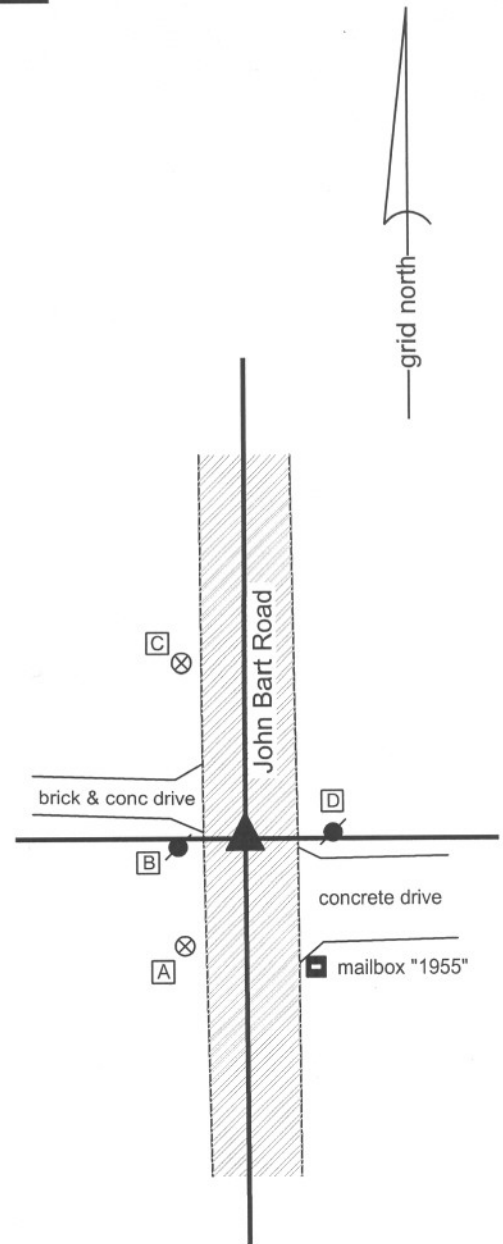
- A - Boone County witness mark, flush, 25.63'
- B - Mag nail found in S. side power pole, 3 in. a.g., 14.47'
- C - Boone County witness mark, flush, 38.88'
- D - Mag nail found in W. side power pole, 1' a.g., 16.59'

Boone County witness mark is a 3/8" diameter x 2' long rebar bearing a metal cap stamped "Boone County Witness Point."

The harrison monument was set in place of a harrison monument found. No specific descriptions of this corner were found in the BCS Surveyor's Record. A BCS tie card dated January 30, 1968 states "no stone found." A BCS tie card dated August 2, 2005 shows the corner as a harrison monument with no documentation of source.

This corner was excavated on June 26, 2012. Prior to excavation, a harrison monument was found at 2 inches below grade. Excavation revealed a vertical section of railroad rail found at 11 inches deep. The harrison monument had been 2 inches west of the position of the top of the rail. Excavation of an area extending 2.5 feet N, 2.5 feet S, 3 feet E and 2 feet W of the harrison/rail revealed no further evidence of the corner. Excavation was performed to a minimum of 17 inches, at least 3 inches into the clay layer found below the road bed. The top of the rail, as found, was held as marking the corner. The rail was removed during excavation and was replaced with a harrison monument in the same position.

This corner was originally established as a wood post in June, 1822.



Kenneth E. Hedge
 Kenneth E. Hedge, County Surveyor

James S. Swift
 James S. Swift, IN LS 20200054
 January 15, 2013

Center Township

Section 19 T19N, R1E	Section 20 T19N, R1E
Section 30 T19N, R1E	Section 29 T19N, R1E

SECTION CORNER RECORD

NE 200-150

BOONE COUNTY SURVEYOR'S OFFICE

State Plane grid coordinates NAD83 (CORS96):

North: 1756193.54 East: 3132487.38 (U.S. survey feet)

Type of monument: Harrison, 4" disk 'Section Corner'

Depth: Three inches above the adjacent ground.

Indiana tie card references:

IN02_T19NR1E20_76

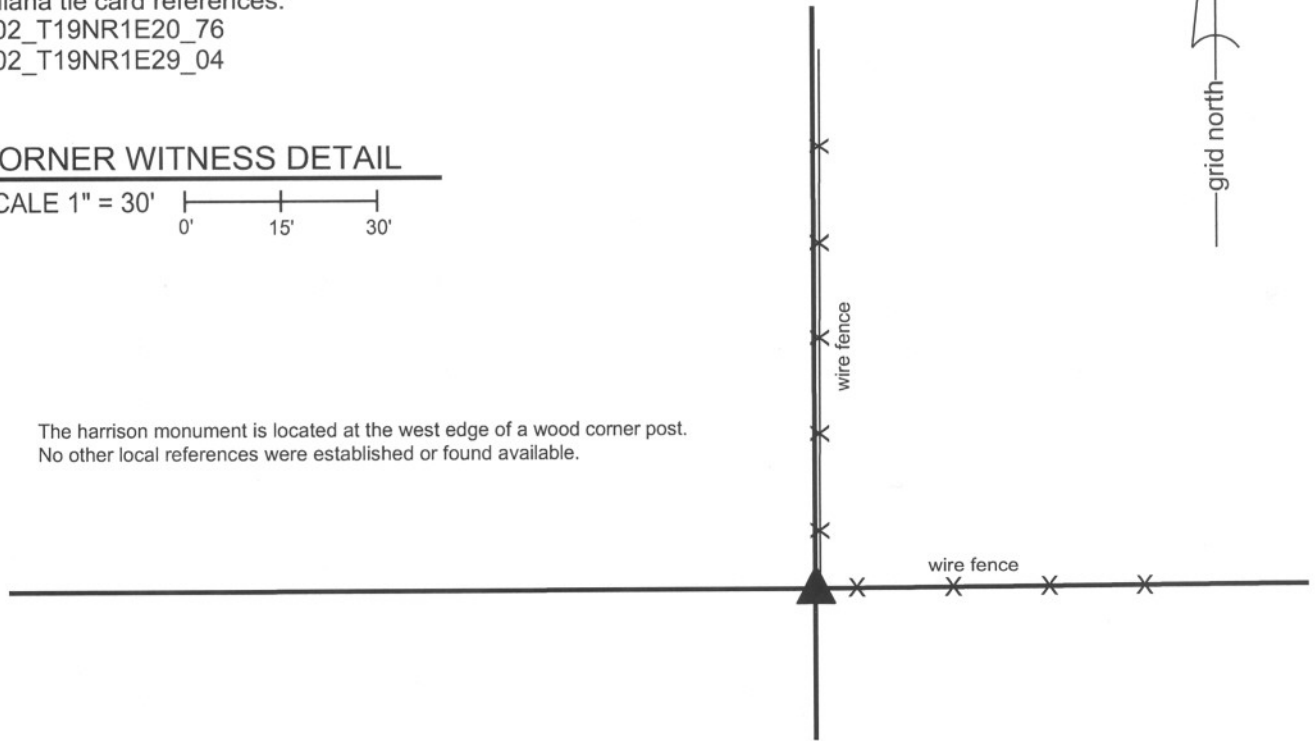
IN02_T19NR1E29_04

CORNER WITNESS DETAIL

SCALE 1" = 30'



The harrison monument is located at the west edge of a wood corner post.
No other local references were established or found available.



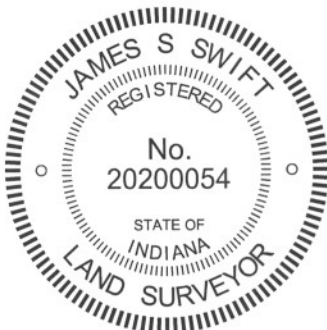
The harrison monument was set in place of a stone found.

No specific descriptions of this corner were found in the BCS Surveyor's Record, though the corner is shown as the terminal point for a measurement in 1841. A BCS tie card dated January 18, 1994 shows the corner as a corner post.

Excavation of this corner took place of November 15, 2012. A wood corner post was found with fence to the north and east, and old fencing cut off to the South. The post is leaning towards the east. Several rocks were found around the post, most of which appear to have been placed there to remove them as obstructions in the adjacent farm fields. A stone which fits some characteristics of corner stones was found along the west edge of the post.

This stone had a distinct high point 7 inches west of the west edge of the post. The stone was removed and found to be 12 inches N-S by 9 inches E-W by 15 inches tall, as it was oriented next to the post. Further excavation below the stone revealed the fact that, due to the leaning nature of the post, the stone was directly over remnants of the west edge of the base of the post. It is not known whether this stone was purposely set to mark the corner or whether it is just a rock sitting upright next to the post. However, the position of the stone relative to the post, being generally over the base of the post, is entirely reasonable as a position for the corner. No other specific evidence of the corner was found.

The top, high point of the found stone was held as marking the corner. The stone was removed and replaced with a harrison monument set in concrete. This corner was originally established as a wood post in June, 1820.



Kenneth E. Hedge

 Kenneth E. Hedge, County Surveyor

James S. Swift

 James S. Swift, IN LS 20200054
 January 15, 2013

Center Twp

Section 20
T19N, R1E

Section 29
T19N, R1E

PHOTOGRAPHIC DOCUMENTATION

Date of photography: November 14 & 19, 2011

The corner post prior to excavation, view from the WSW.



Several rocks excavated from around the post.



The rock held as marking the corner at the west edge of the base of the post.



The harrison monument and witness marker.



For details and documentation, refer to related sheet "Section Corner Record."

SECTION CORNER RECORD

NE 200-200

BOONE COUNTY SURVEYOR'S OFFICE

State Plane grid coordinates NAD83 (CORS96):
North: 1756209.13 East: 3135148.89 (U.S. survey feet)

Type of monument: Harrison, 4" disk 'Section Corner'
Depth: One inch below adjacent road/drive surface

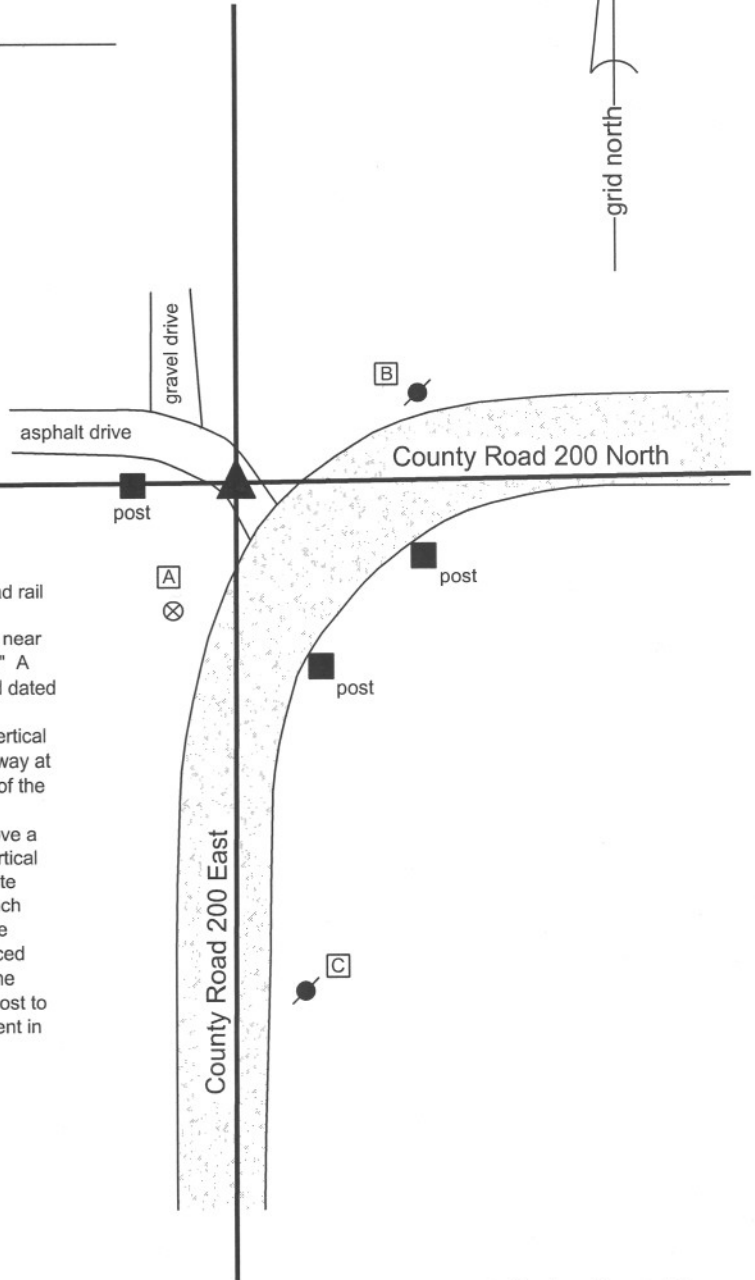
Indiana tie card references:
IN02_T19NR1E20_80 IN02_T19NR1E21_72
IN02_T19NR1E29_08 IN02_T19NR1E28_00

CORNER WITNESS DETAIL

SCALE 1" = 40'
0' 20' 40'

- A - Boone County witness mark, flush, 29.75'
- B - Mag nail set in S.W. side power pole, 2' a.g., 40.36'
- C - Mag nail set in N. side power pole, 2' a.g., 105.10'

Boone County witness mark is a 3/8" diameter x 2' long rebar bearing a metal cap stamped "Boone County Witness Point."

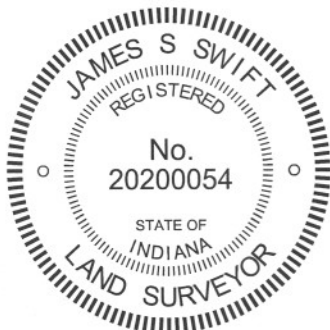


The harrison monument was set in place of a vertical section of railroad rail found.

A BCS record dated October 29, 1868 states "Reestablished from the near Oak, the other down but here yet. Set Rock 13.12.5-1/2 in. marked +." A BCS tie card dated October 1975 states "Stone found. A BCS tie card dated July 27, 2005 shows the corner as a steel rail.

This corner was excavated on June 21, 2012. Prior to excavation a vertical section of railroad rail was found at 6 inches deep, in an asphalt driveway at a position which represents the extension of the approximate centers of the county road to the east and south. It is known that it was a common practice for BCS field crews in the late 1960s and early 1970s to remove a stone when found and replace it with a steel monument, typically a vertical section of railroad rail. The found section of steel rail is believed to date from the 1975 tie card, most likely in place of the found stone. A 15 inch diameter hole, centered on the rail, was excavated to 2 feet deep. The stone was not found and is believed to have been removed and replaced with the rail in 1975. The rail fits with local evidence of the corner in the form of the county roads to the east and south and an old wood end post to the west. The rail was removed and replaced with a harrison monument in the same position.

This corner was originally established as a wood post in June, 1822.



Kenneth E. Hedge
Kenneth E. Hedge, County Surveyor

James S. Swift
James S. Swift, IN LS 20200054
January 15, 2013

Center Township

Section 20 T19N, R1E	Section 21 T19N, R1E
Section 29 T19N, R1E	Section 28 T19N, R1E