

# SECTION CORNER RECORD

## BOONE COUNTY SURVEYOR'S OFFICE

SW 400-400

State Plane grid coordinates NAD83 (2011):  
 North: 1724229.66 East: 3103688.18 (U.S. survey feet)

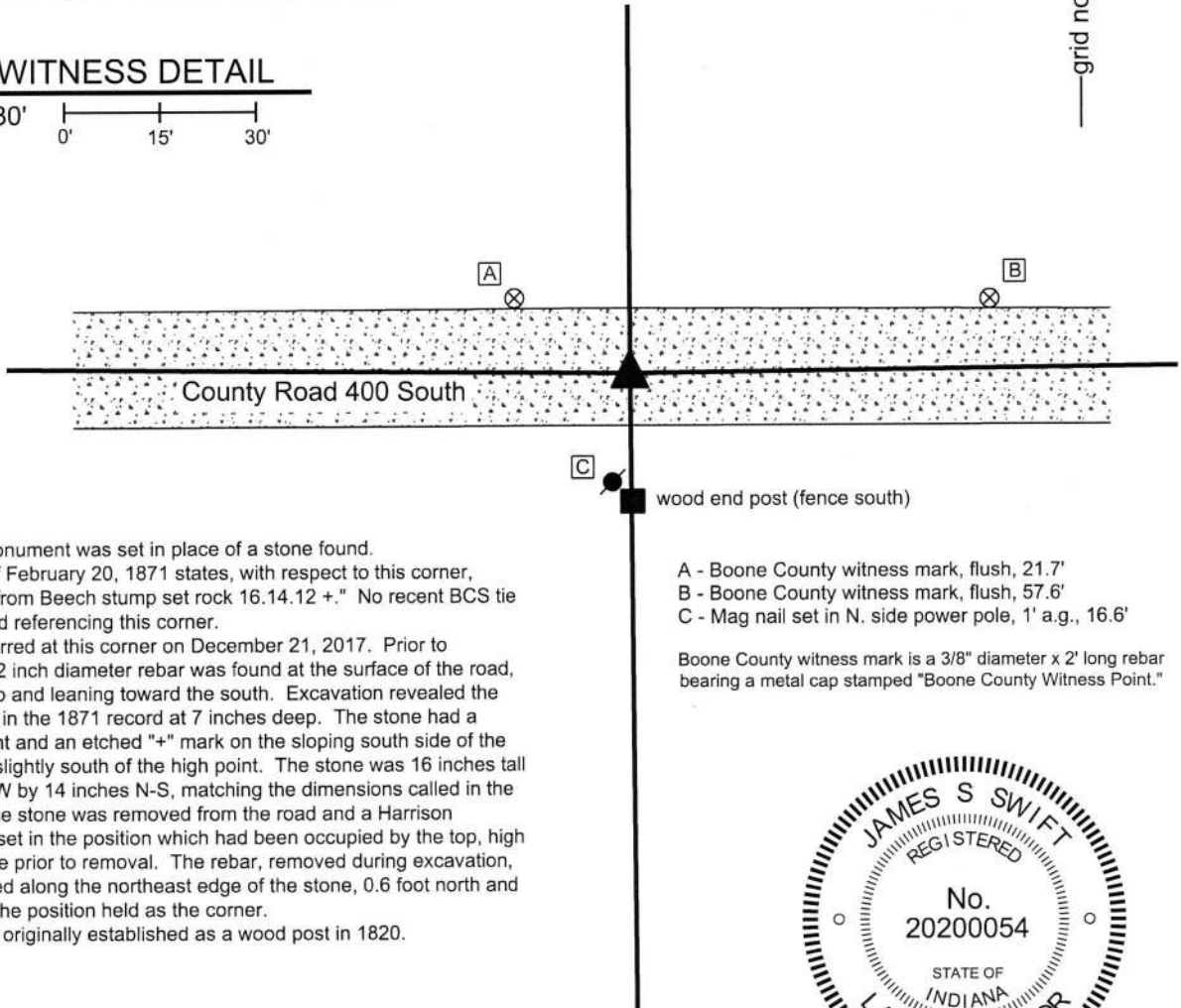
Type of monument: Harrison, 4" disk 'Section Corner'  
 Depth: Six inches below adjacent gravel road surface

Indiana tie card references:  
 IN02\_T18NR1W20\_80 IN02\_T18NR1W21\_72  
 IN02\_T18NR1W29\_08 IN02\_T18NR1W28\_00



### CORNER WITNESS DETAIL

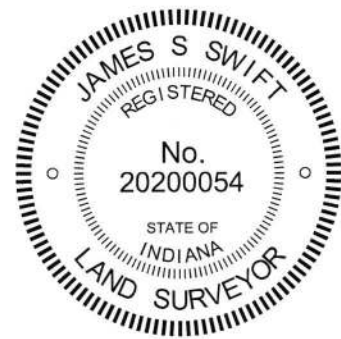
SCALE 1" = 30'



The Harrison monument was set in place of a stone found. A BCS record of February 20, 1871 states, with respect to this corner, "Reestablished from Beech stump set rock 16.14.12 +." No recent BCS tie cards were found referencing this corner. Excavation occurred at this corner on December 21, 2017. Prior to excavation, a 1/2 inch diameter rebar was found at the surface of the road, bent near the top and leaning toward the south. Excavation revealed the stone described in the 1871 record at 7 inches deep. The stone had a distinct high point and an etched "+" mark on the sloping south side of the top of the rock, slightly south of the high point. The stone was 16 inches tall by 12 inches E-W by 14 inches N-S, matching the dimensions called in the 1871 record. The stone was removed from the road and a Harrison monument was set in the position which had been occupied by the top, high point of the stone prior to removal. The rebar, removed during excavation, had been situated along the northeast edge of the stone, 0.6 foot north and 0.3 foot east of the position held as the corner. This corner was originally established as a wood post in 1820.

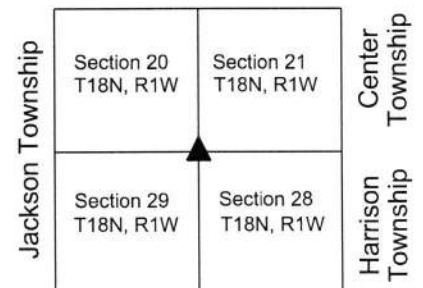
- A - Boone County witness mark, flush, 21.7'
- B - Boone County witness mark, flush, 57.6'
- C - Mag nail set in N. side power pole, 1' a.g., 16.6'

Boone County witness mark is a 3/8" diameter x 2' long rebar bearing a metal cap stamped "Boone County Witness Point."



*Kenneth E. Hedge*  
 Kenneth E. Hedge, County Surveyor

*James S. Swift*  
 James S. Swift, IN LS 20200054  
 February 6, 2018



# SECTION CORNER RECORD

## BOONE COUNTY SURVEYOR'S OFFICE

SW 400-450

State Plane grid coordinates NAD83 (2011):  
 North: 1724253.75 East: 3101052.40 (U.S. survey feet)

Type of monument: Harrison, 4" disk 'Section Corner'  
 Depth: Six inches below adjacent gravel road surface

Indiana tie card references:  
 IN02\_T18NR1W20\_76  
 IN02\_T18NR1W29\_04

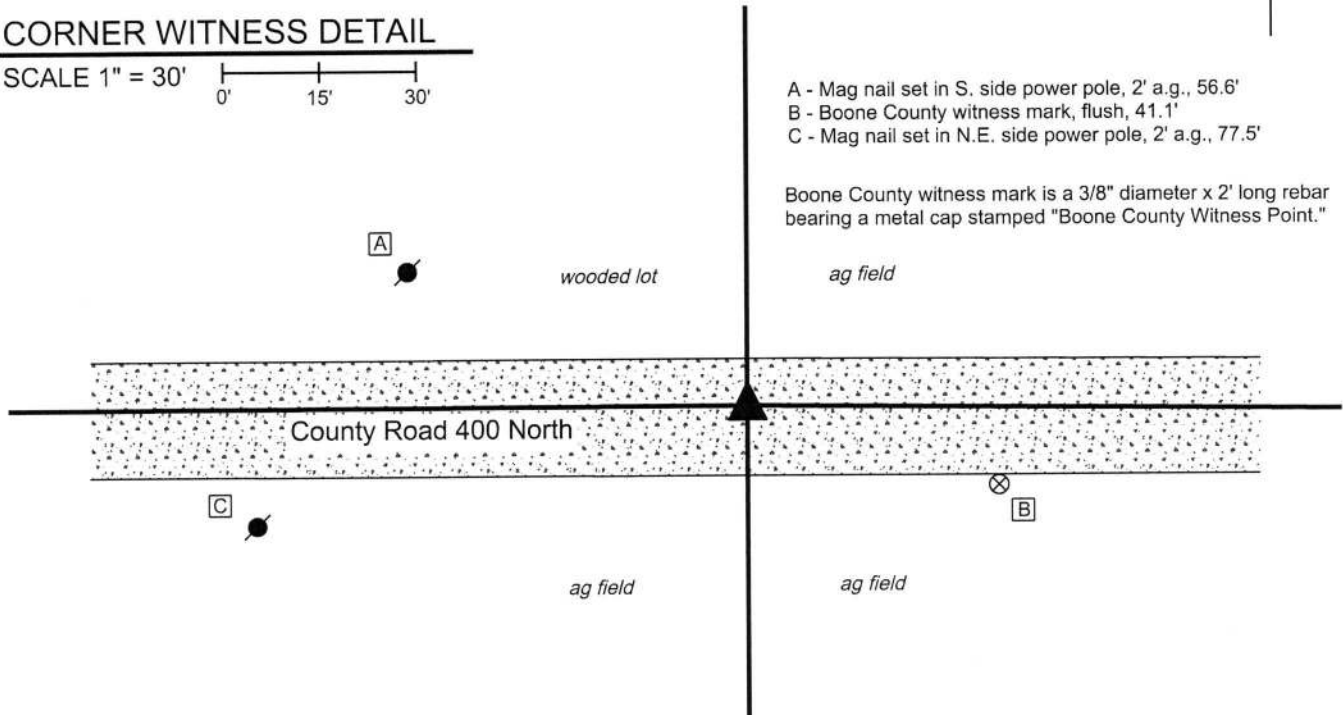


### CORNER WITNESS DETAIL

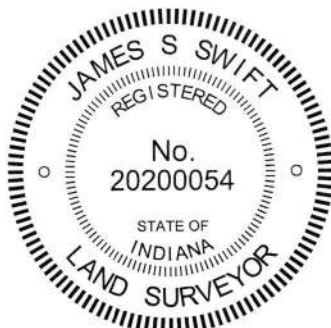
SCALE 1" = 30'

- A - Mag nail set in S. side power pole, 2' a.g., 56.6'
- B - Boone County witness mark, flush, 41.1'
- C - Mag nail set in N.E. side power pole, 2' a.g., 77.5'

Boone County witness mark is a 3/8" diameter x 2' long rebar bearing a metal cap stamped "Boone County Witness Point."



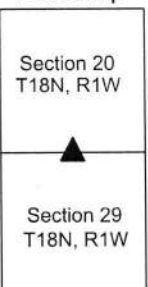
The Harrison monument was set in place of a stone found.  
 A BCS record of October 9, 1912 states, with respect to this corner, "Reestd from stumps of both trees. Set Rock 16x8x7 +."  
 No recent BCS tie cards were found marking this corner.  
 Excavation occurred at this corner on December 20, 2017. Prior to excavation, a railroad spike was found approximately 3 inches deep in the road. No documentation was found indicating the origin of the spike. Excavation revealed the stone described in the 1912 record at 7 inches deep. As found, the stone appeared to be leaning toward the south. The stone was removed, measured and found to match the dimensions called in the 1912 record. An etched "+" mark was found on what would have been the south side of the stone, as found, but was likely the top of the stone as originally placed. Although the stone appeared to be leaning, the base of the stone was well embedded in the clay layer below the road bed and the overall rock did not appear to have been disturbed from its original position, except for the lean to the south. The stone was held as marking the corner and a Harrison monument was set in place of the base of the stone, as found embedded below the road bed. The railroad spike, removed during excavation, had been 1.6 feet north and 1.3 feet east of the position held as the corner.  
 This corner was originally established as a wood post in 1819.



*Kenneth E. Hedge*  
 Kenneth E. Hedge, County Surveyor

*James S. Swift*  
 James S. Swift, IN LS 20200054  
 February 6, 2018

Jackson Township



# SECTION CORNER RECORD

SW 450-400

## BOONE COUNTY SURVEYOR'S OFFICE

State Plane grid coordinates NAD83 (2011):

North: 1721598.24 East: 3103711.40 (U.S. survey feet)

Type of monument: Harrison, 4" disk 'Section Corner'

Depth: Two inches above adjacent ground

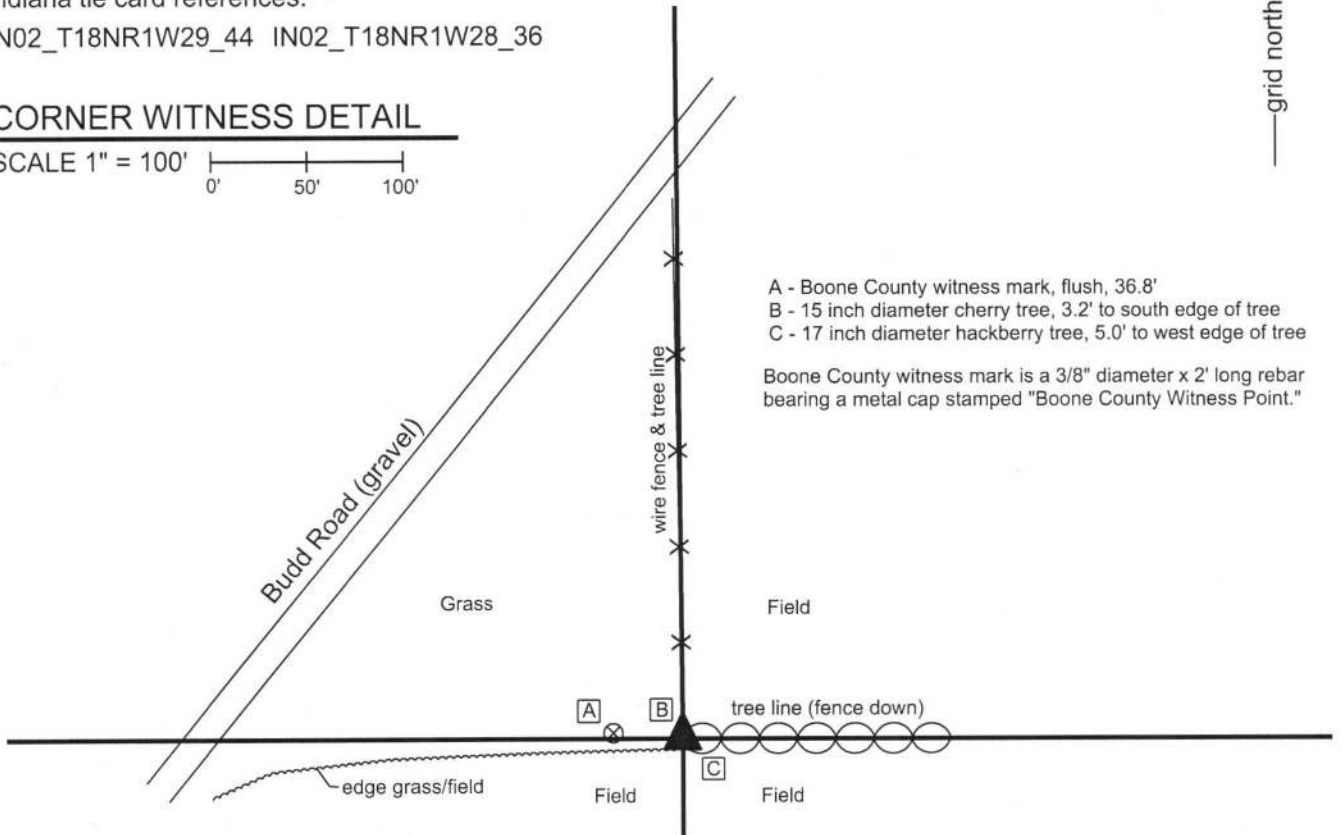
Indiana tie card references:

IN02\_T18NR1W29\_44 IN02\_T18NR1W28\_36



### CORNER WITNESS DETAIL

SCALE 1" = 100'  
0' 50' 100'

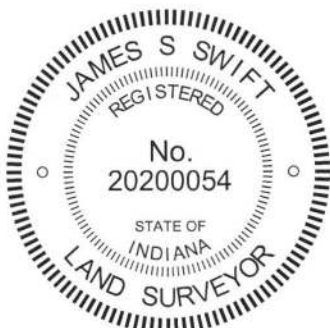


The Harrison Monument was set above and in place of the remains of a wood corner post found.

A record dated November 2-4, 1857 states, with respect to this corner, "Reest., Rock 13x19." No recent BCS tie cards were found referencing this corner.

Excavation was performed on September 11, 2017. An ancient wood corner post was found at the intersection of fences to the north and east. The visible portion of the post, as found, was separated from the ground and was leaning substantially northeast, support by the wires of the old fence. The fencing appeared to have been recently nailed to trees in the immediate vicinity of the corner, causing the post to be pulled north and east of its original position as attached to the ground. The base of the post was found in the ground at the intersection of the longer fence lines to the north and east. Excavation around the base of the post uncovered numerous small rocks, none of which matched the dimensions stated in the 1857 record. The base of the post in the ground was accepted as the best available evidence of the corner and was held as marking the corner. The top two feet of the base of the post were broken off from the remainder of the post and a Harrison monument was set directly above the remainder of the post. The total depth of the subterranean portion of the post was not measured.

This corner was originally established as a wood post in 1820.



*Kenneth E. Hedge*  
Kenneth E. Hedge, County Surveyor

*James S. Swift*  
James S. Swift, IN LS 20200054  
September 19, 2017

Jackson Township	Harrison Township
Section 29 T18N, R1W	Section 28 T18N, R1W

# SECTION CORNER RECORD

SW 500-400

## BOONE COUNTY SURVEYOR'S OFFICE

State Plane grid coordinates NAD83 (2011):

North: 1718964.75 East: 3103733.23 (U.S. survey feet)

Type of monument: Harrison, 4" disk 'Section Corner'

Depth: 3 inches above adjacent ground

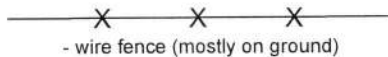
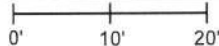
Indiana tie card references:

IN02\_T18NR1W29\_80 IN02\_T18NR1W28\_72

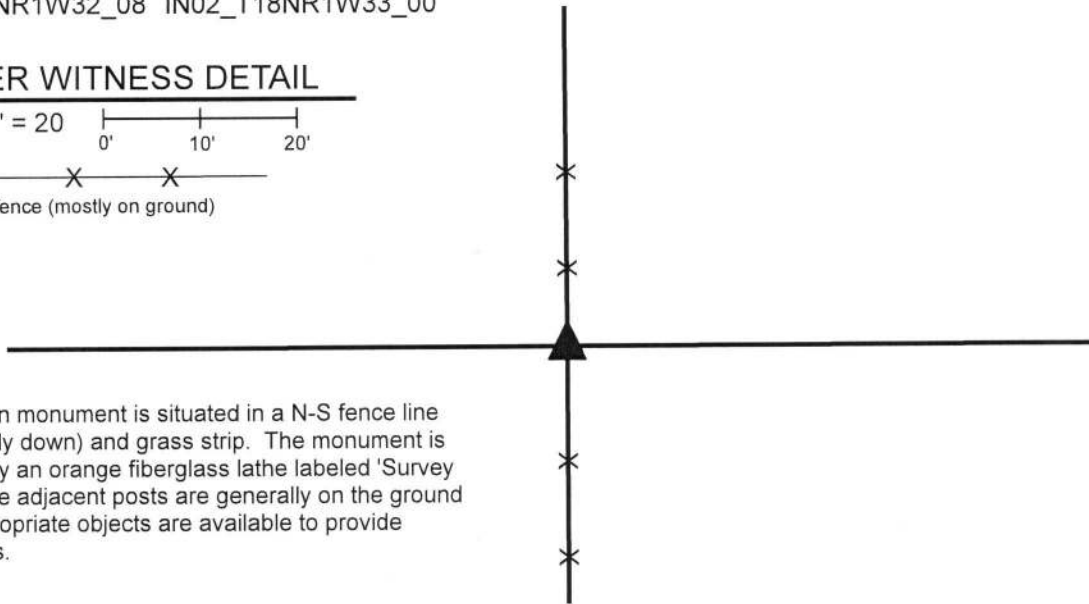
IN02\_T18NR1W32\_08 IN02\_T18NR1W33\_00

### CORNER WITNESS DETAIL

SCALE 1" = 20'



- wire fence (mostly on ground)

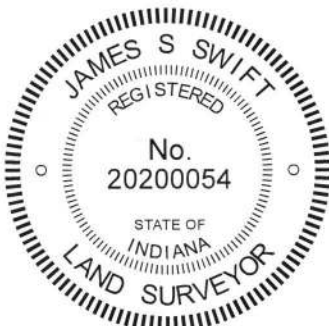


The Harrison monument is situated in a N-S fence line (fence mostly down) and grass strip. The monument is witnessed by an orange fiberglass lathe labeled 'Survey Marker.' The adjacent posts are generally on the ground and no appropriate objects are available to provide distance ties.

The Harrison monument was set over the base of a wood corner post found.

No specific descriptions of this corner were found in the BCS Surveyor's Record beyond the original establishment of the corner as a wood post in 1820. The corner is noted as the terminal point for measurements in BCS records on 1855 and 1857. No recent BCS tie cards were found referencing the corner. The corner is shown as a wood headpost on a survey by Ronald E. Wharry, LS #S0420, dated December 29, 2000 and recorded in Survey Book 5, page 36 in the Office of the Boone County Recorder.

This corner was excavated on March 29, 2019. Prior to excavation, an 8 inch by 8 inch wood corner post was found in a section of North-South fence. As found, the above-ground portion of the post was no longer attached to the ground and was suspended amidst standing fencing, leaning substantially toward the east. The post was attached to fencing to the north and south and had evidence of fencing cut to the east. The post was still attached to a wood brace on the north side and a notch for a former brace was observed on the east side. The aforementioned Wharry survey shows fencing to the north, south, and east. Excavation in the vicinity of the post revealed a remnants of a wagon wheel found approximately two feet north of the post and numerous rocks were found around the post. Two stones were found below the wagon wheel. Neither the wheel nor stones could be positively identified as marking the corner and appeared to simply be lying partially embedded in the ground adjacent to the post. Two large rocks are situated immediately east of the post. A sandstone rock was found at 18 inches deep, immediately south of the post and several small rocks were found adjacent to the north and west edges of the post. The base of the post was found at approximately 14 inches deep. None of the rocks bore the characteristics of stones set purposely to mark the corner. The position of the post fit well with the relative locations of proximate corners and fit with the position of the corner as depicted on the Wharry survey. The base of the post was held as marking the corner. The remnants of the base of the post were left in the ground. Three sections of 1/2 inch diameter rebar, 2 feet long were driven around the remnants of the base of the post. The top of the base of the post and the rebars were encased in concrete and a Harrison monument was set directly above the base of the post.



*Kenneth E. Hedge*  
Kenneth E. Hedge, County Surveyor

*James S. Swift*  
James S. Swift, IN LS 20200054  
May 22, 2019

Jackson Township

Section 29 T18N, R1W	Section 28 T18N, R1W
Section 32 T18N, R1W	Section 33 T18N, R1W

# SECTION CORNER RECORD

SW 500-450

## BOONE COUNTY SURVEYOR'S OFFICE

State Plane grid coordinates NAD83 (2011):

North: 1718961.59 East: 3101056.16 (U.S. survey feet)

Type of monument: Harrison, 4" disk 'Section Corner'

Depth: Flush with ground to west, two inches above ground to east

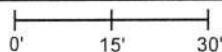
Indiana tie card references:

IN02\_T18NR1W29\_76

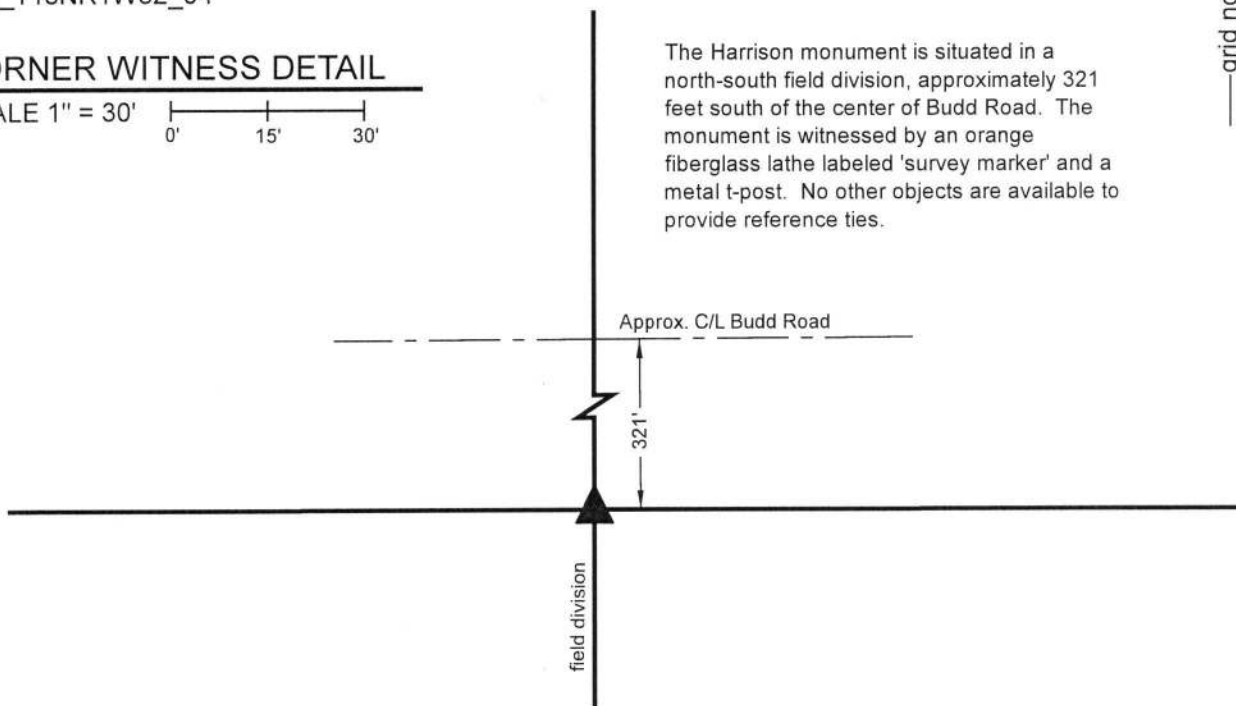
IN02\_T18NR1W32\_04

### CORNER WITNESS DETAIL

SCALE 1" = 30'



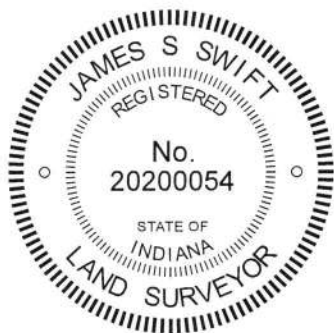
The Harrison monument is situated in a north-south field division, approximately 321 feet south of the center of Budd Road. The monument is witnessed by an orange fiberglass lathe labeled 'survey marker' and a metal t-post. No other objects are available to provide reference ties.



The Harrison monument was set in place of a rebar found.

No specific descriptions of this corner were found in the BCS Surveyor's Record beyond the original establishment of the corner as a wood post in 1820. No recent BCS tie cards were found referencing the corner. The corner is shown as a rebar set on a survey by Ronald E. Wharry, LS #S0420, dated December 29, 2000, recorded in Survey Book 5, page 36 in the Office of the Boone County Recorder. The Wharry survey demonstrates the corner to be at the intersection of a north-south fence and a straight line connecting the section corners to the east and west.

This corner was excavated in August, 2019 and again in October, 2019. The rebar was found, apparently undisturbed, bearing the cap of Mr. Wharry. Extensive probing and manual excavation in the vicinity of the rebar revealed no stones or similar evidence of the corner. The fence shown on the aforementioned survey is no longer present in standing form, but the rebar was found to fall along a line between a wood post found 63 feet south of the corner and a wood post on the south edge of Budd Road. Scraps of east-west fencing were found in the ground, approximately one foot deep, in the immediate vicinity of the corner, indicating that the position established by Mr. Wharry fits with the local physical evidence of the corner. The rebar was held as marking the corner. The rebar was removed and replaced with a Harrison monument in the same position. It is noted that the adjoining deed descriptions do not provide sufficient information to confirm the position of the corner with respect to Budd Road, several hundred feet to the north. It is also noted that the monument does not fall precisely along a line connecting the corners to the east and west, but is within 0.2 foot of a line connecting the evidence currently known for those corners.



Kenneth E. Hedge, County Surveyor

James S. Swift, IN LS 20200054  
November 13, 2019

Jackson Township

Section 29  
T18N, R1W

Section 32  
T18N, R1W