

SECTION CORNER RECORD

SE 400-100

BOONE COUNTY SURVEYOR'S OFFICE

State Plane grid coordinates NAD83 (CORS96):

North: 1724556.97 East: 3129967.83 (U.S. survey feet)

Type of monument: Harrison, 4" disk 'Section Corner'

Depth: One inch below adjacent road surface

Indiana tie card references:

IN02_T18NR1E19_80 IN02_T18NR1E20_72

IN02_T18NR1E30_00 IN02_T18NR1E29_00

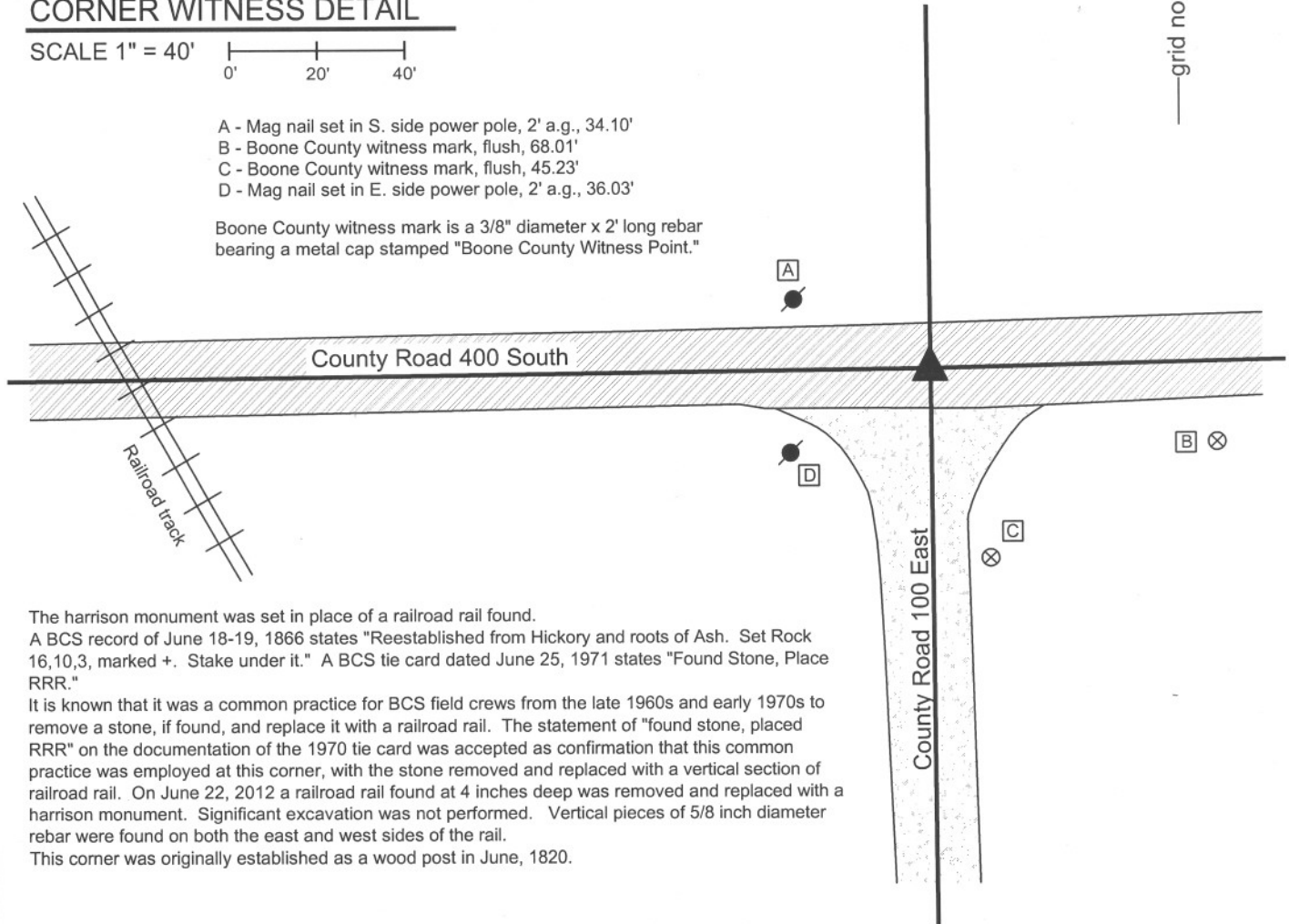
CORNER WITNESS DETAIL

SCALE 1" = 40'



- A - Mag nail set in S. side power pole, 2' a.g., 34.10'
- B - Boone County witness mark, flush, 68.01'
- C - Boone County witness mark, flush, 45.23'
- D - Mag nail set in E. side power pole, 2' a.g., 36.03'

Boone County witness mark is a 3/8" diameter x 2' long rebar bearing a metal cap stamped "Boone County Witness Point."

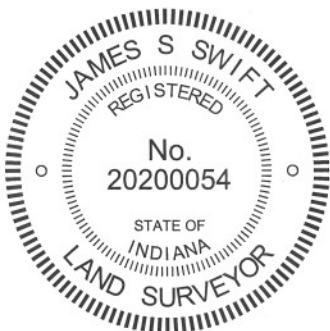


The harrison monument was set in place of a railroad rail found.

A BCS record of June 18-19, 1866 states "Reestablished from Hickory and roots of Ash. Set Rock 16,10,3, marked +. Stake under it." A BCS tie card dated June 25, 1971 states "Found Stone, Place RRR."

It is known that it was a common practice for BCS field crews from the late 1960s and early 1970s to remove a stone, if found, and replace it with a railroad rail. The statement of "found stone, placed RRR" on the documentation of the 1970 tie card was accepted as confirmation that this common practice was employed at this corner, with the stone removed and replaced with a vertical section of railroad rail. On June 22, 2012 a railroad rail found at 4 inches deep was removed and replaced with a harrison monument. Significant excavation was not performed. Vertical pieces of 5/8 inch diameter rebar were found on both the east and west sides of the rail.

This corner was originally established as a wood post in June, 1820.



Kenneth E. Hedge
Kenneth E. Hedge, County Surveyor

James S. Swift
James S. Swift, IN LS 20200054
January 15, 2013

Harrison Township

Section 19 T18N, R1E	Section 20 T18N, R1E
Section 30 T18N, R1E	Section 29 T18N, R1E

SECTION CORNER RECORD

SE 400-150

BOONE COUNTY SURVEYOR'S OFFICE

State Plane grid coordinates NAD83 (CORS96):

North: 1724615.12 East: 3132646.89 (U.S. survey feet)

Type of monument: Harrison, 4" disk 'Section Corner'

Depth: One inch below adjacent road surface

Indiana tie card references:

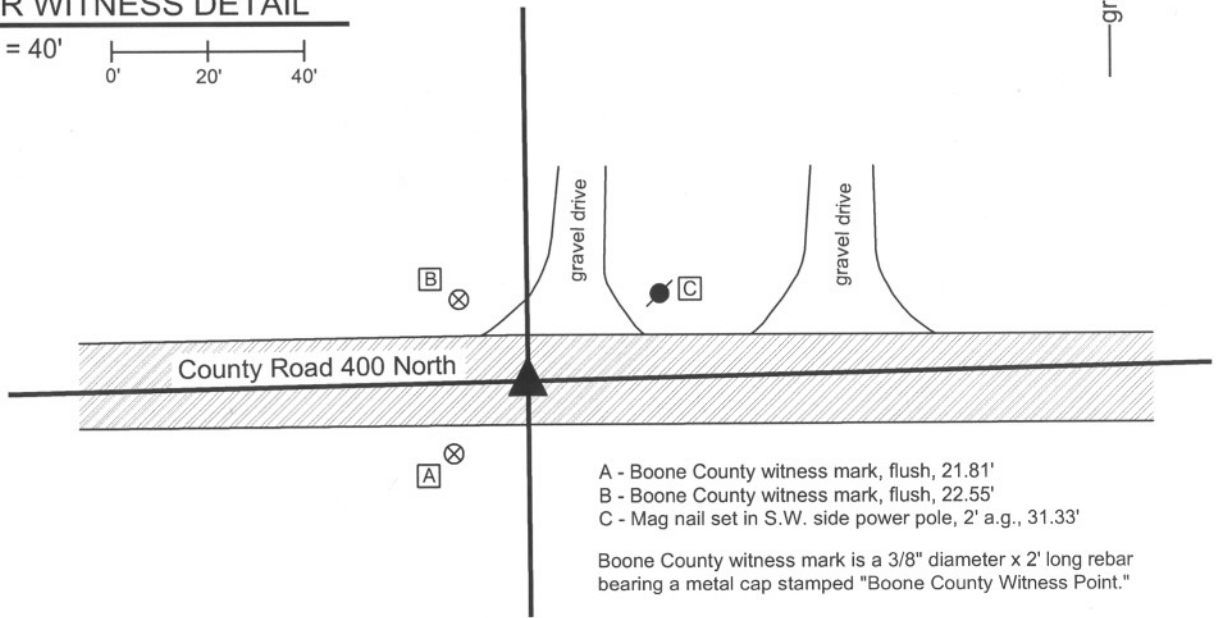
IN02_T18NR1E20_76

IN02_T18NR1E29_04



CORNER WITNESS DETAIL

SCALE 1" = 40'



- A - Boone County witness mark, flush, 21.81'
- B - Boone County witness mark, flush, 22.55'
- C - Mag nail set in S.W. side power pole, 2' a.g., 31.33'

Boone County witness mark is a 3/8" diameter x 2' long rebar bearing a metal cap stamped "Boone County Witness Point."

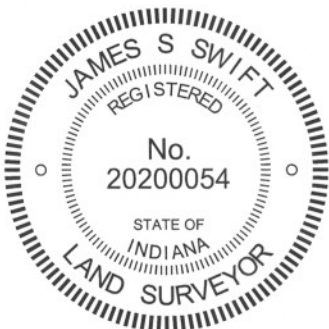
The harrison monument was set in place of a stone found.

A BCS record of June 18-19, 1866 states Reestablished from both trees, drove a stake." A BCS record of April 18, 1867 states "Set a Rock. 11,9,5."

A BCS tie card dated May 4, 1992 shows the corner as a PK nail found.

This corner was excavated on June 25, 2012. Prior to excavation, a railroad spike was found at 3 inches deep in the asphalt roadway. Excavation revealed the stone described in the 1867 record at 15 inches deep. As found, the stone appeared to have been knocked over. The stone was embedded in the clay but oriented in a haphazard fashion, which is not typical of stones set by the County Surveyor's Office in the mid to late 1800s. The stone was fully embedded in the clay layer below the road bed. The stone was removed and measured to be 11 inches by 9 inches by 5 inches, per the 1867 record. The position of the main body of the stone, as embedded in the clay, was in the center of the east-west road, directly in line with the old end post to the south. This position was held as marking the corner and a harrison monument was set at this position. The railroad spike, removed during excavation, had been 1.1 feet north of the position of the corner as established.

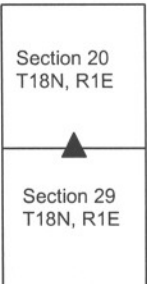
This corner was originally established as a wood post in June, 1820.



Kenneth E. Hedge
Kenneth E. Hedge, County Surveyor

James S. Swift
James S. Swift, IN LS 20200054
January 15, 2013

Perry Twp



PHOTOGRAPHIC DOCUMENTATION

Date of photography: June 25, 2012

View of the stone as first exposed.



View of the stone more fully exposed.
View from above and west.



View of the stone and the posts on the south side of County Road 400 South.



View of the stone from above and north.



The hole in the road bed after the stone was removed.



For details and documentation, refer to related sheet "Section Corner Record."

SECTION CORNER RECORD

SE 400-200

BOONE COUNTY SURVEYOR'S OFFICE

State Plane grid coordinates NAD83 (NSRS 2007):

North: 1724680.57 East: 3135311.64 (U.S. survey feet)

Type of monument: Harrison, 4" disk 'Section Corner'

Depth: One inch below adjacent road surface

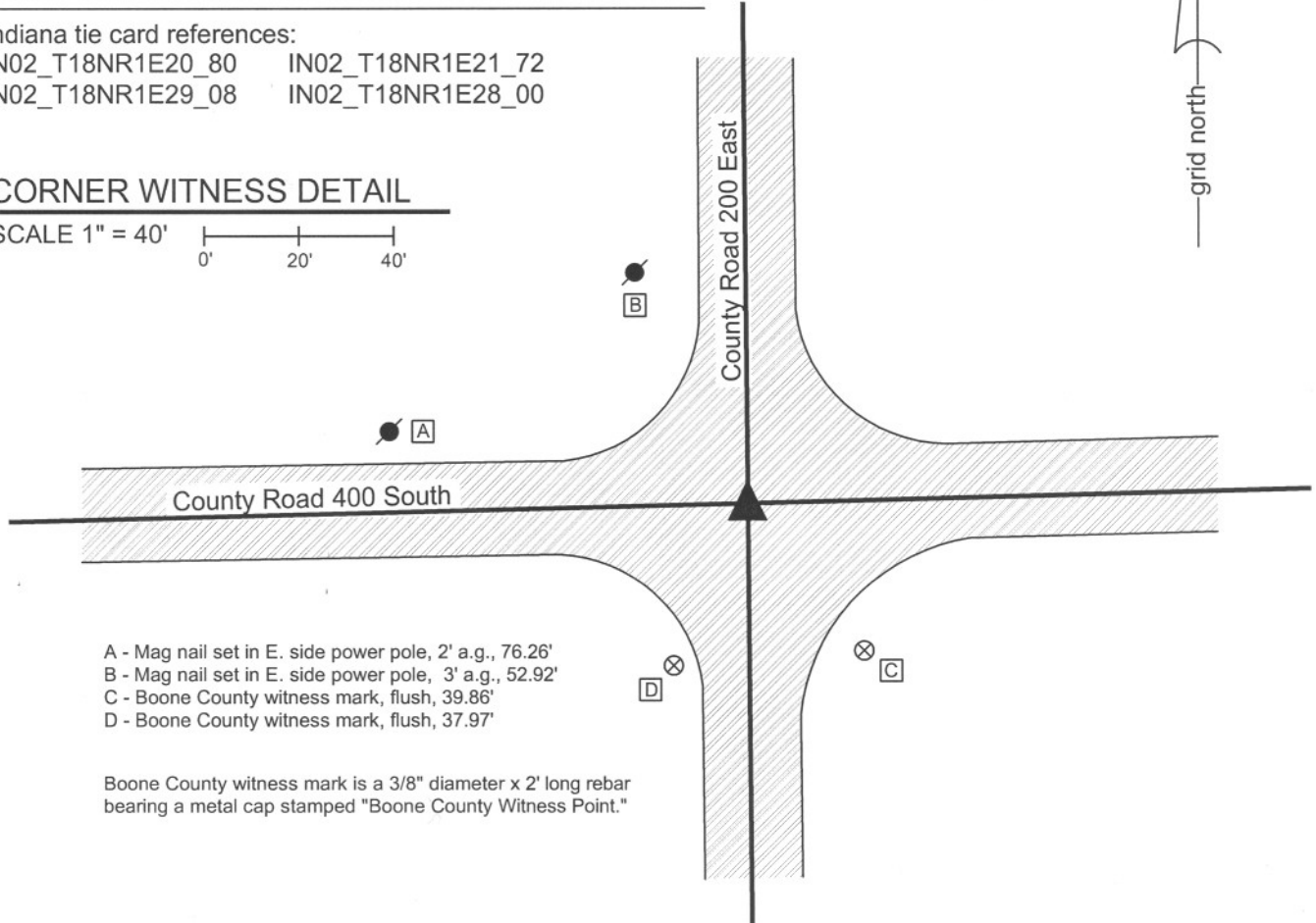
Indiana tie card references:

IN02_T18NR1E20_80 IN02_T18NR1E21_72

IN02_T18NR1E29_08 IN02_T18NR1E28_00

CORNER WITNESS DETAIL

SCALE 1" = 40'



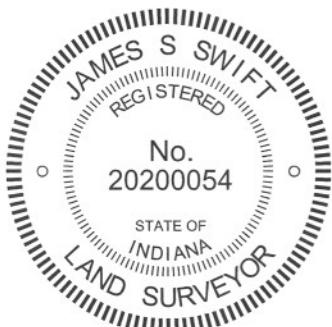
- A - Mag nail set in E. side power pole, 2' a.g., 76.26'
- B - Mag nail set in E. side power pole, 3' a.g., 52.92'
- C - Boone County witness mark, flush, 39.86'
- D - Boone County witness mark, flush, 37.97'

Boone County witness mark is a 3/8" diameter x 2' long rebar bearing a metal cap stamped "Boone County Witness Point."

The harrison monument was set over a stone found.

A BCS record of October 13 & 21, 1869 states "Reestablished from Beech. Rock 19.12.9 +." A BCS tie card dated July 21, 1968 states "no stone." This corner was excavated on November 2, 2009. Prior to excavation a Mag Nail was visible at the surface. Excavation revealed a railroad spike found at 2 inches deep, below the nail. Further excavation revealed a section of railroad rail on end at 10 inches deep, below the railroad spike. The 1968 tie card does not mention the establishment of a monument, but it is believed most likely that the railroad rail was set at the same time the tie card was made proclaiming "no stone." Further excavation revealed two small stones found at 15 inches deep. The record stone was found below the two small stones, at 20 inches deep. The stone is fully embedded in the clay layer below the road, with the top of the stone at the top of the clay. With the top six inches of the stone exposed, the stone measures 12 inches N-S by 9 inches E-W. An etched "+" is clearly visible on the west side of the stone, approximately 3 inches down from the top. The harrison monument was set over the top of the stone, in line with the etched "+". The Mag nail, railroad spike and railroad rail, all removed during excavation, were all 2.0 feet north and 0.75 feet east of the stone.

This corner was originally established as a wood post in 1820.



Kenneth E. Hedge
Kenneth E. Hedge, County Surveyor

James S. Swift
James S. Swift, IN LS 20200054
July 25, 2011

Perry Township

Section 20 T18N, R1E	Section 21 T18N, R1E
Section 29 T18N, R1E	Section 28 T18N, R1E

PHOTOGRAPHIC DOCUMENTATION
Date of photography: December 14, 2009

View of the top two stones as first exposed.



View of the larger of the top two stones with the lower, record, stone visible below.



The stone described in the 1868 record from above and northwest.



The record stone from above and north. The two upper stones are visible on the pavement.



View of the top and west side of the record stone.



Same view as to the left, with the etched mark on the stone enhanced for ease of visual detection.



For details and documentation, refer to related sheet "Section Corner Record."

SECTION CORNER RECORD

SE 450-100

BOONE COUNTY SURVEYOR'S OFFICE

State Plane grid coordinates NAD83 (NSRS 2007):

North: 1721893.32 East: 3129990.30 (U.S. survey feet)

Type of monument: Harrison, 4" disk 'Section Corner'

Depth: six inches below adjacent gravel road surface

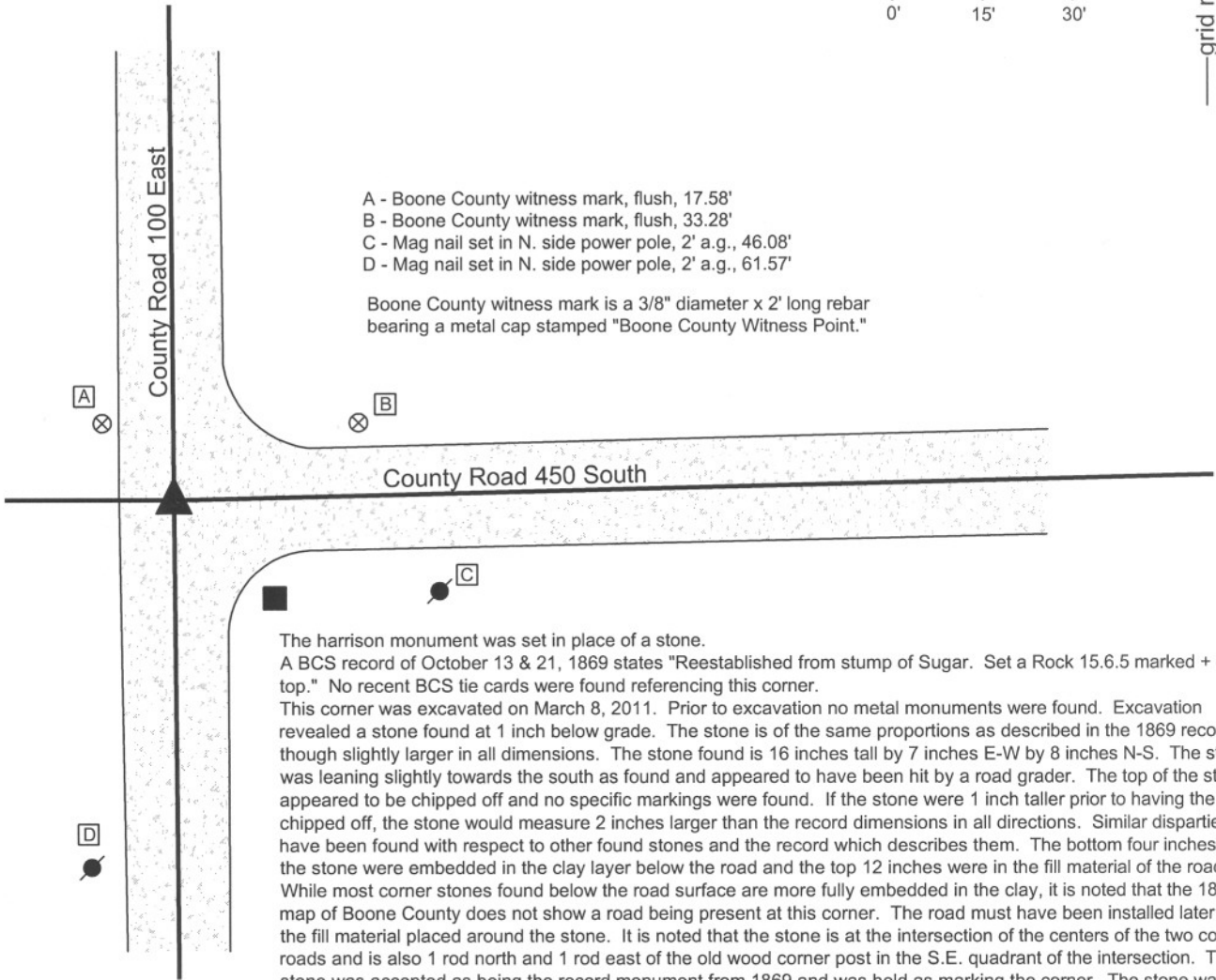
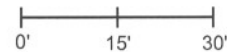
Indiana tie card references:

IN02_T18NR1E30_44

IN02_T18NR1E29_36

CORNER WITNESS DETAIL

SCALE 1" = 30'



- A - Boone County witness mark, flush, 17.58'
- B - Boone County witness mark, flush, 33.28'
- C - Mag nail set in N. side power pole, 2' a.g., 46.08'
- D - Mag nail set in N. side power pole, 2' a.g., 61.57'

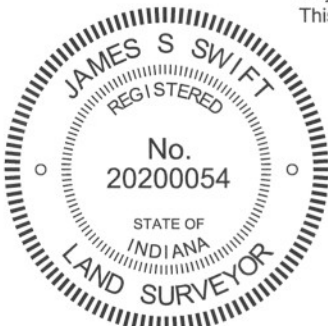
Boone County witness mark is a 3/8" diameter x 2' long rebar bearing a metal cap stamped "Boone County Witness Point."

The harrison monument was set in place of a stone.

A BCS record of October 13 & 21, 1869 states "Reestablished from stump of Sugar. Set a Rock 15.6.5 marked + on top." No recent BCS tie cards were found referencing this corner.

This corner was excavated on March 8, 2011. Prior to excavation no metal monuments were found. Excavation revealed a stone found at 1 inch below grade. The stone is of the same proportions as described in the 1869 record, though slightly larger in all dimensions. The stone found is 16 inches tall by 7 inches E-W by 8 inches N-S. The stone was leaning slightly towards the south as found and appeared to have been hit by a road grader. The top of the stone appeared to be chipped off and no specific markings were found. If the stone were 1 inch taller prior to having the top chipped off, the stone would measure 2 inches larger than the record dimensions in all directions. Similar disparities have been found with respect to other found stones and the record which describes them. The bottom four inches of the stone were embedded in the clay layer below the road and the top 12 inches were in the fill material of the road. While most corner stones found below the road surface are more fully embedded in the clay, it is noted that the 1876 map of Boone County does not show a road being present at this corner. The road must have been installed later and the fill material placed around the stone. It is noted that the stone is at the intersection of the centers of the two county roads and is also 1 rod north and 1 rod east of the old wood corner post in the S.E. quadrant of the intersection. The stone was accepted as being the record monument from 1869 and was held as marking the corner. The stone was removed and a harrison monument was set in the position of the base of the stone, where it had been embedded in the clay layer below the road.

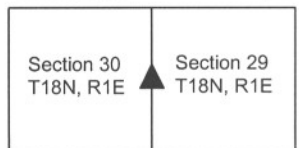
This corner was originally established as a wood post in June, 1820.



Kenneth E. Hedge
 Kenneth E. Hedge, County Surveyor

James S. Swift
 James S. Swift, IN LS 20200054
 March 1, 2012

Harrison Township Perry Township



PHOTOGRAPHIC DOCUMENTATION

Date of photography: March 8, 2011

View of the stone as first exposed.



View of the stone from the west.



View of the stone from the north.



View of the stone removed from the road bed, lying next to the hole from which it was removed.



For details and documentation, refer to related sheet "Section Corner Record."

SECTION CORNER RECORD

SE 450-200

BOONE COUNTY SURVEYOR'S OFFICE

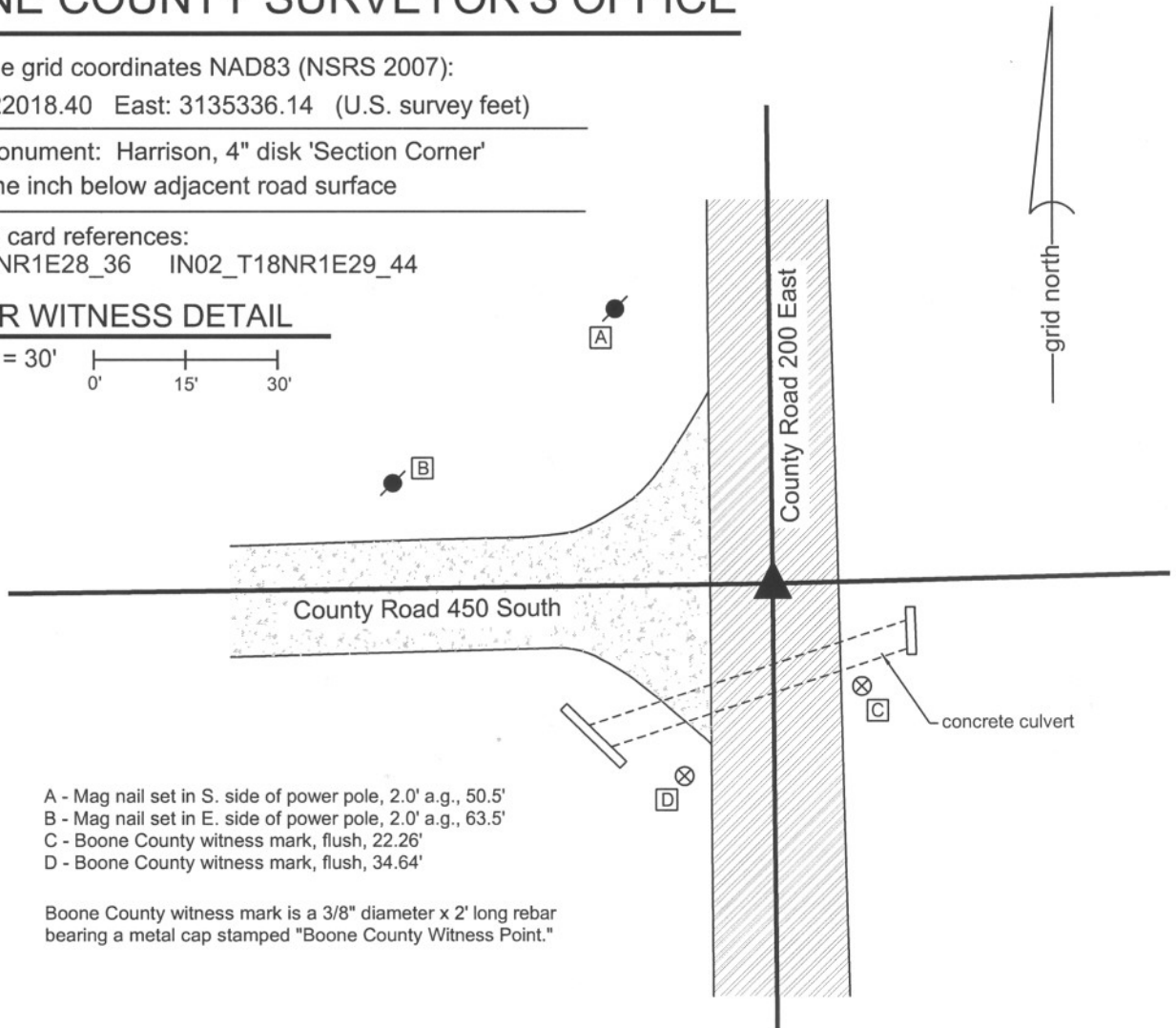
State Plane grid coordinates NAD83 (NSRS 2007):
North: 1722018.40 East: 3135336.14 (U.S. survey feet)

Type of monument: Harrison, 4" disk 'Section Corner'
Depth: One inch below adjacent road surface

Indiana tie card references:
IN02_T18NR1E28_36 IN02_T18NR1E29_44

CORNER WITNESS DETAIL

SCALE 1" = 30'
0' 15' 30'



- A - Mag nail set in S. side of power pole, 2.0' a.g., 50.5'
- B - Mag nail set in E. side of power pole, 2.0' a.g., 63.5'
- C - Boone County witness mark, flush, 22.26'
- D - Boone County witness mark, flush, 34.64'

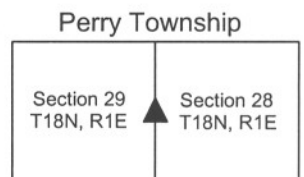
Boone County witness mark is a 3/8" diameter x 2' long rebar bearing a metal cap stamped "Boone County Witness Point."

The harrison monument was set in place of a mag nail and railroad rail found. A BCS record of October 13 & 21, 1869 states "Reestablished from Ash stumps. Set a Rock 10,6,5-1/2 marked +, brick under it." A BCS tie card dated July 20, 1968 states "no stone." This corner was excavated on November 10, 2009. Prior to excavation, a Mag nail with a washer was found at 3 inches below grade in a hole in the asphalt. Excavation revealed a section of railroad rail set on end at 9 inches deep, directly below the nail. Though not specifically documented as such, the railroad rail was likely set in association with the creation of the 1968 tie card. No other monuments were found. The material cross-section of the road in this area is that of approximately 7 inches of asphalt over 9 inches of a sandy, fill type dirt. This kind of base material has not been observed during the excavation of other corners. Below this is the layer of clay which has been found under many other corners. However, unlike most corners, the clay is not of a smooth consistency and appears to be mixed with the sandy, fill type dirt. It is noted that a large concrete culvert in under the road approximately 13 feet south of the corner. The culvert is approximately 4.5 feet wide by 2 feet high. Given the presence of the culvert, the unusual base material of the road and the apparent mixing of the dirt and clay, it is reasonable to conclude that the road bed in this immediate vicinity was disturbed during construction of the concrete culvert and that the record stone was removed at the same time. The area of excavation was 4 feet E-W by 6 feet N-S to a minimum depth of 26 inches, well into the clay, though as noted, the clay appeared to be disturbed to this depth. The harrison monument was set in place of the mag nail and railroad rail, both of which were removed during excavation. This corner was originally established as a wood post in June, 1820.



Kenneth E. Hedge
Kenneth E. Hedge, County Surveyor

James S. Swift
James S. Swift, IN LS 20200054
July 14, 2010



SECTION CORNER RECORD

BOONE COUNTY SURVEYOR'S OFFICE

SE 500-100

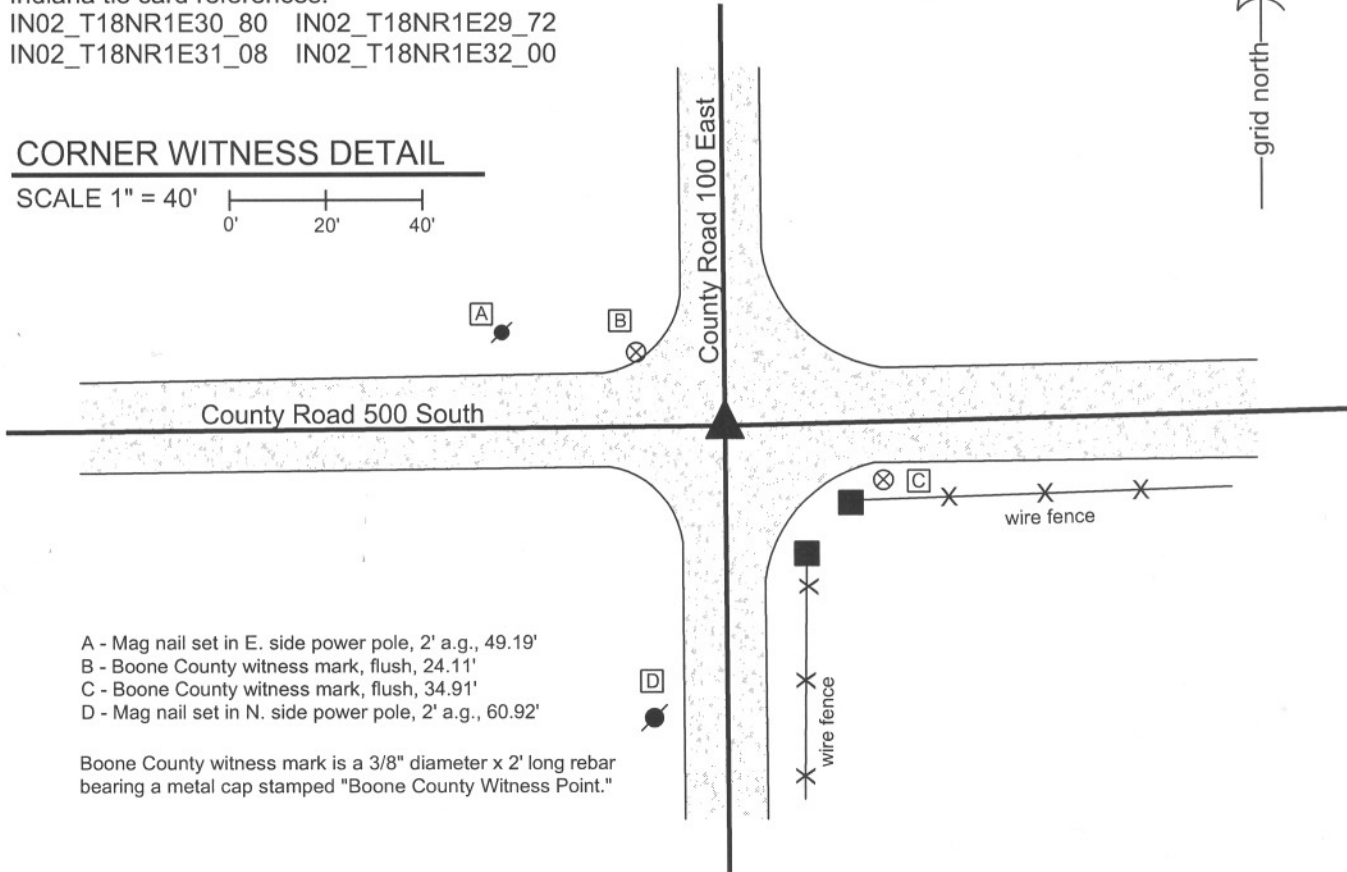
State Plane grid coordinates NAD83 (CORS96):
 North: 1719232.36 East: 3130012.93 (U.S. survey feet)

Type of monument: Harrison, 4" disk 'Section Corner'
 Depth: six inches below adjacent gravel road surface

Indiana tie card references:
 IN02_T18NR1E30_80 IN02_T18NR1E29_72
 IN02_T18NR1E31_08 IN02_T18NR1E32_00

CORNER WITNESS DETAIL

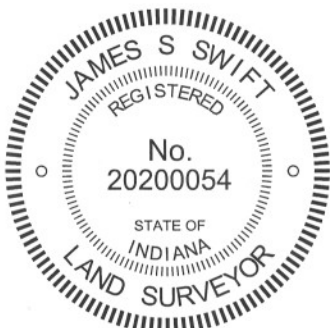
SCALE 1" = 40'



- A - Mag nail set in E. side power pole, 2' a.g., 49.19'
- B - Boone County witness mark, flush, 24.11'
- C - Boone County witness mark, flush, 34.91'
- D - Mag nail set in N. side power pole, 2' a.g., 60.92'

Boone County witness mark is a 3/8" diameter x 2' long rebar bearing a metal cap stamped "Boone County Witness Point."

The Harrison monument was set over a stone found.
 A BCS record of August 19-20, 1867 states "Set Rock 17.12.8." A BCS tie card dated May 5, 1992 shows the corner as an iron pin found.
 This corner was excavated on March 1, 2011. Prior to excavation a 1/2 inch diameter rebar was found at 2 inches deep. Excavation revealed a stone found at 15 inches deep. With the top 11 inches of the stone exposed, it measures approximately 12 inches E-W by 6 inches N-S and remains entirely stable, embedded in the clay layer below the road. The top of the stone protruded approximately 3 inches out of the clay layer in the base of the road bed. No specific marking were found, nor were any noted in the 1867 record. This stone was accepted as being the stone described in the 1867 record and was held as marking the corner. The stone was left in place. The top 10 inches of the stone were encased in concrete and a Harrison monument was set over the top, center of the stone. The rebar, removed during excavation, had been one foot north of the stone.
 This corner was originally established as a wood post in June, 1820.



Kenneth E. Hedge
 Kenneth E. Hedge, County Surveyor

James S. Swift
 James S. Swift, IN LS 20200054
 March 1, 2012

Harrison Township	Perry Township
Section 30 T18N, R1E	Section 29 T18N, R1E
Section 31 T18N, R1E	Section 32 T18N, R1E

PHOTOGRAPHIC DOCUMENTATION

Date of photography: March 7, 2011

View of the stone as first exposed.



View of the stone from above and west.



View from the west, looking across the stone and east along County Road 500 South.



View of the stone from above and north.



View of the stone from above and east.



For details and documentation, refer to related sheet "Section Corner Record."

SECTION CORNER RECORD

SE 500-150

BOONE COUNTY SURVEYOR'S OFFICE

State Plane grid coordinates NAD83 (NSRS 2007):

North: 1719297.71 East: 3132686.16 (U.S. survey feet)

Type of monument: Harrison, 4" disk 'Section Corner'

Depth: six inches below adjacent gravel road surface

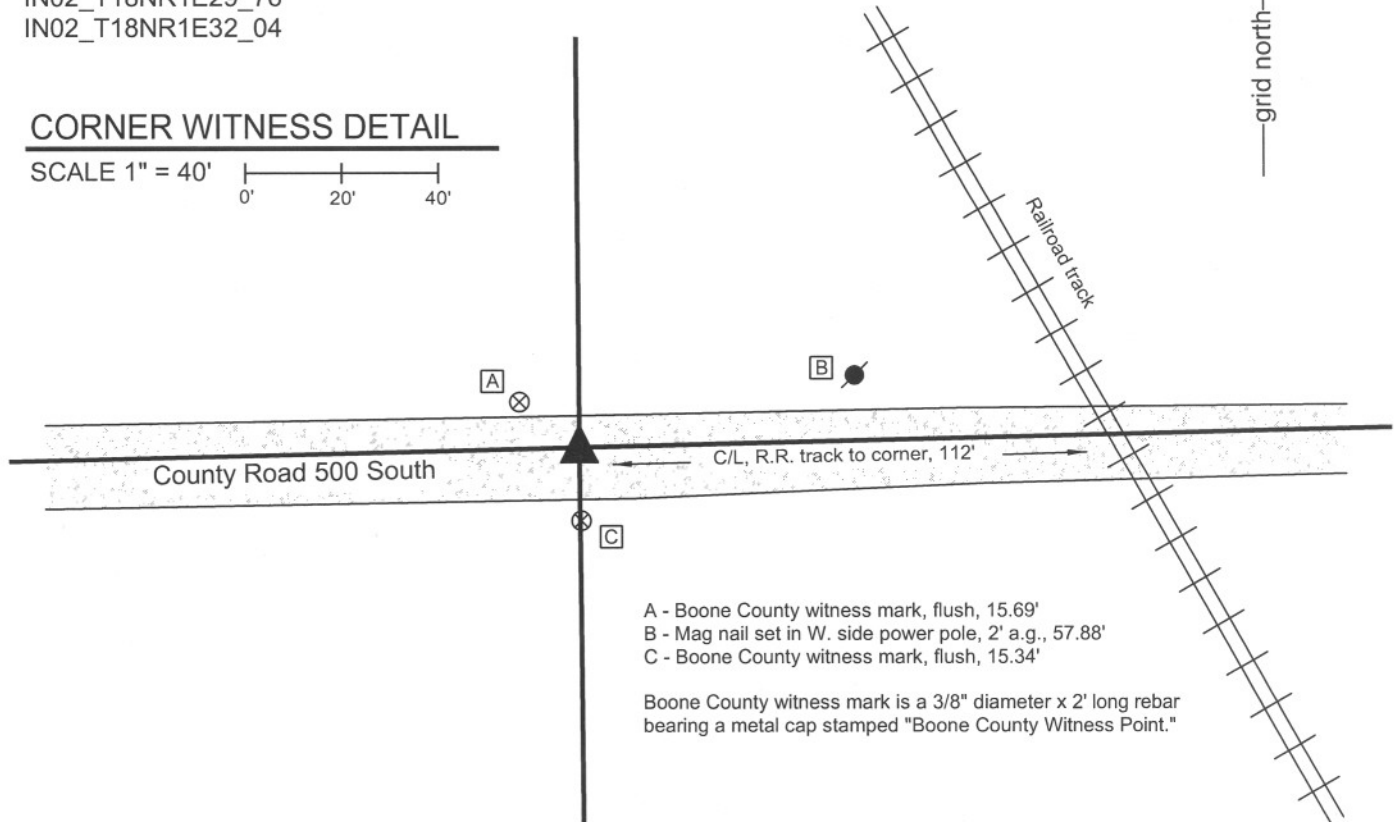
Indiana tie card references:

IN02_T18NR1E29_76

IN02_T18NR1E32_04

CORNER WITNESS DETAIL

SCALE 1" = 40'

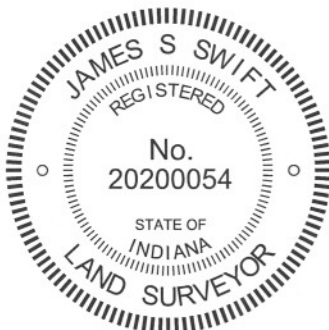


The harrison monument was set over a stone found.

A BCS record of August 19-20, 1867 states "Reestablished. Set Rock 18.13.7" A BCS tie card dated May 5, 1992 shows the corner as a 1 inch hollow pipe found."

This corner was excavated on March 7, 2011. Prior to excavation, an iron pipe was found at 3 inches below grade. The pipe was removed and found to be 8 inches long. Another pipe was found directly below it. Further excavation revealed a stone found at 18 inches deep. The stone is vertical and embedded in the clay layer below the road. With the top 11 inches of the stone exposed, it measures 12 inches E-W by 7 inches N-S and remained stable in the clay. The stone protruded approximately 4 inches out of the clay layer into the bottom of the road bed. No specific markings were found on the stone, nor were any called for in the 1867 record. This stone was accepted as being the stone described in the 1867 record and was held as marking the corner. The stone was left in place. The top 4 inches of the stone were encased in concrete and a harrison monument was set over the top center and high point of the stone. The iron pipes, removed during excavation, had been 2.5 feet south of the stone.

This corner was originally established as a wood post in June, 1820.



Kenneth E. Hedge
Kenneth E. Hedge, County Surveyor

James S. Swift
James S. Swift, IN LS 20200054
March 1, 2012

Perry Twp

Section 29
T18N, R1E

Section 32
T18N, R1E

PHOTOGRAPHIC DOCUMENTATION

Date of photography: March 7, 2011

View of the stone from above and west.



View of the stone and cross section of the road from the south.



View from the east, looking across the stone and west along County Road 500 South.



View of the stone from above.



View of the stone from above and east.



For details and documentation, refer to related sheet "Section Corner Record."

SECTION CORNER RECORD

SE 500-200

BOONE COUNTY SURVEYOR'S OFFICE

State Plane grid coordinates NAD83 (NSRS 2007):

North: 1719359.75 East: 3135360.29 (U.S. survey feet)

Type of monument: Harrison, 4" disk 'Section Corner'

Depth: One inch below adjacent road surface

Indiana tie card references:

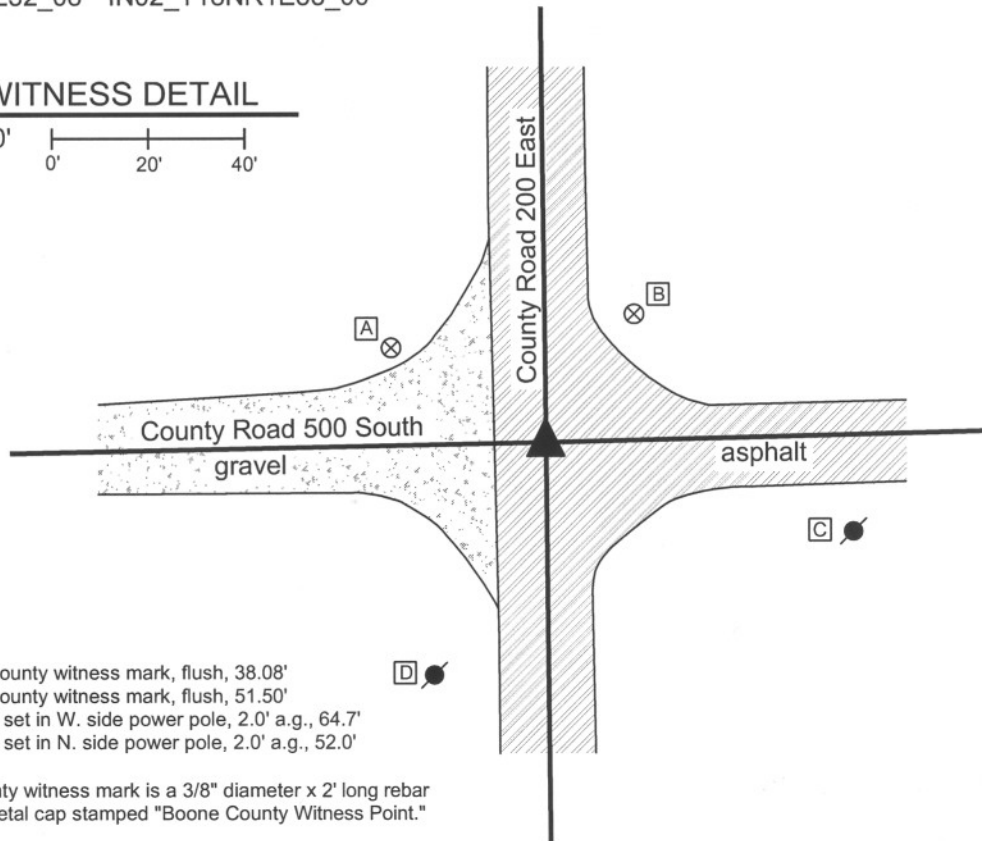
IN02_T18NR1E28_72 IN02_T18NR1E29_80

IN02_T18NR1E32_08 IN02_T18NR1E33_00



CORNER WITNESS DETAIL

SCALE 1" = 40'



- A - Boone County witness mark, flush, 38.08'
- B - Boone County witness mark, flush, 51.50'
- C - Mag nail set in W. side power pole, 2.0' a.g., 64.7'
- D - Mag nail set in N. side power pole, 2.0' a.g., 52.0'

Boone County witness mark is a 3/8" diameter x 2' long rebar bearing a metal cap stamped "Boone County Witness Point."

The harrison monument was set over a stone found.

A BCS record of August 19 - 20, 1867 states "Reestablished in line 40.15 from D & D Sect. 29. Set a Rock 13,12,11." A BCS tie card dated July 20, 1968 states "no stone." This corner was excavated on November 10, 2009. Prior to excavation, a road nail was found in a hole in the asphalt 4 inches below grade. Excavation revealed a railroad rail on end at 8 inches deep below the nail. Further excavation revealed the record stone found at 21 inches deep, north of the rail. The stone is embedded in the clay layer below the road, protruding approximately 3 inches out of the clay into the base of the road. The stone measures 13 inches NE-SW by 11 inches NW-SE and is 12 inches tall. No specific markings were found on the stone, nor were any mentioned in the record. The harrison monument was set over the the approximate top center of the stone. The nail and railroad rail, both removed during excavation, had been 1.5 feet south and 0.7 foot east of the stone.

This corner was originally established as a wood post in June, 1820.



Kenneth E. Hedge
Kenneth E. Hedge, County Surveyor

James S. Swift

James S. Swift, IN LS 20200054

July 14, 2010

Perry Township

Section 29 T18N, R1E	Section 28 T18N, R1E
Section 32 T18N, R1E	Section 33 T18N, R1E

PHOTOGRAPHIC DOCUMENTATION

Date of photography: November 10, 2009

View of the stone as first exposed.
View from above and east.



View of the stone after drying in the air briefly.
View from above and east.



View from the south, looking across the stone
and north along County Road 200 East.



For details and documentation, refer to
related sheet "Section Corner Record."