

# SECTION CORNER RECORD

# NE 700-800

## BOONE COUNTY SURVEYOR'S OFFICE

State Plane grid coordinates NAD83 (CORS96):

North: 1783624.03 East: 3166701.64 (U.S. survey feet)

Type of monument: Harrison, 4" disk 'Section Corner'

Depth: six inches below adjacent gravel road surface

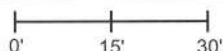
Indiana tie card references:

IN02\_T20NR2E29\_80      IN02\_T20NR2E28\_72

IN02\_T20NR2E32\_08      IN02\_T20NR2E33\_00

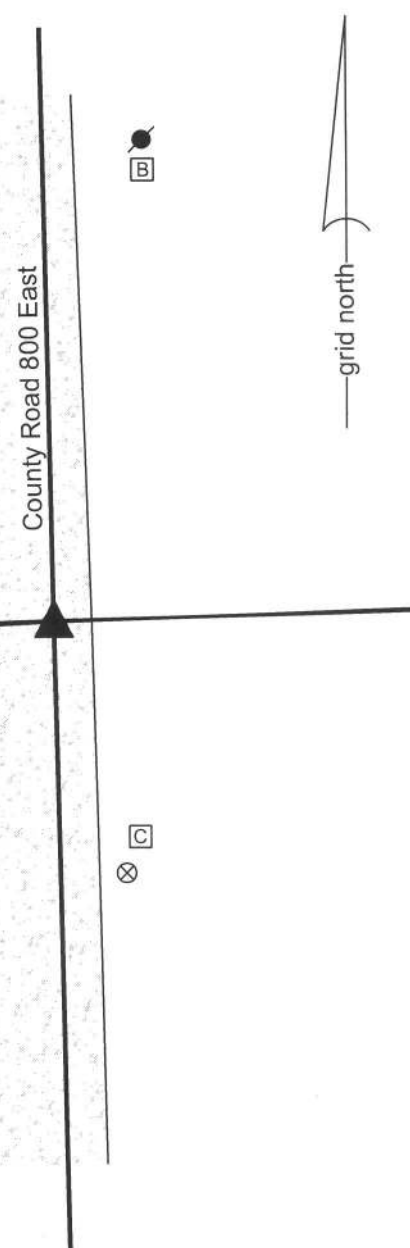
### CORNER WITNESS DETAIL

SCALE 1" = 30'



- A - Boone County witness mark, flush, 26.06'
- B - Mag nail set in s. side power pole, 2' a.g., 75.65'
- C - Boone County witness mark, flush, 40.74'

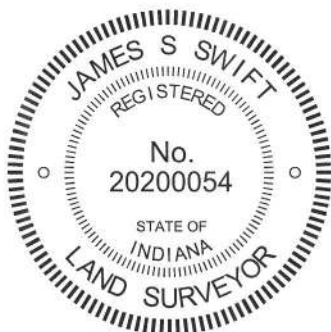
Boone County witness mark is a 3/8" diameter x 2' long rebar bearing a metal cap stamped "Boone County Witness Point."



The harrison monument was set in place of a railroad spike found.

A BCS record of October 4, 1886 states "Reestablished from stump of Beech (S 9° W). Set Rock 19x15x13+, witness 12x13x8+ bears S38°E 44 lks." A BCS tie card dated August 10, 1974 states "small stone found" and graphically demonstrates the corner to be at the midpoint between end posts for the fences to the east and west.

This corner was excavated on August 2, 2013. Prior to excavation a railroad spike was found at 2 inches deep in the gravel road. Excavation of an area extending 3.5 feet N, 5 feet E, 3.5 feet S and 5 feet W revealed no further evidence of the corner. The reference on the 1974 tie card to a "small stone found" does not harmonize with the 1886 call for a stone 19x15x13, which would probably not have been considered "small" by a BCS crew of that, or any, era. It is noted that the railroad spike is not consistent with the type of monument known to be used by BCS crews in 1975. It is also noted that the road bed was found to consist of only 5 inches of material above the clay layer. Typically corner stones are found to be embedded in the clay layer below the road, protruding 2 to 5 inches into the bottom of the road bed. Given the minimal road bed at this corner, it is highly likely that the 1886 record stone was repeatedly hit by road grading equipment and possible removed for that reason. The railroad spike does fit with local evidence in the form of the field division to the west. The spike was near the east side of the road, as were the corner stones found 1/2 and 1 mile north, respectively of this corner. The witness stone called for in the 1886 record was searched for in the form of probing. The expected position of the witness stone falls either in the road side ditch or the adjacent plowed field. Probing revealed no evidence of the witness stone. Given the lack of contrary evidence, the position of the railroad spike was held as marking the corner and the railroad spike was replaced with a harrison monument. This corner was originally established as a wood post in June, 1821.



*Kenneth E. Hedge*  
Kenneth E. Hedge, County Surveyor

*James S. Swift*  
James S. Swift, IN LS 20200054  
February 5, 2015

Marion Township

Section 29 T20N, R2E	Section 28 T20N, R2E
Section 32 T20N, R2E	Section 33 T20N, R2E

# SECTION CORNER RECORD

NE 700-850

## BOONE COUNTY SURVEYOR'S OFFICE

State Plane grid coordinates NAD83 (2011):

North: 1783711.76 East: 3169366.37 (U.S. survey feet)

Type of monument: Harrison, 4" disk 'Section Corner'

Depth: Four inches above adjacent ground

Indiana tie card references:

IN02\_T20NR2E28\_76 IN02\_T20NR2E33\_04

### CORNER WITNESS DETAIL

No Scale

The Harrison monument is situated at the north edge of a wood post at the intersection of field divisions to the north, south, and west. The monument is 0.95 feet north of the north edge of the post and is witnessed by an orange fiberglass lathe 'survey marker.' No other distance ties are provided.

field division

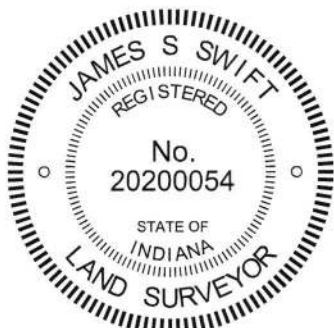
field division

field division



A BCS Record dated February 16, 1869 states, with respect to this corner, "Reestablished from Ash, set a Rock 15 by 14.11 marked +." No Recent BCS tie cards were found referencing this corner.

This corner was excavated on March 5, 2018. Prior to excavation, a wood post was found at the intersection of field divisions to the north, south and west. The post is also in line with fences which are yet standing, but not in the immediate vicinity of the corner, to the west and south. Excavation around the post revealed a horizontal piece of cedar wood found at the south edge of the post and two stones found approximately 1 foot north of the post. The two stones were situated one on top of the other. The top stone was found at 3 inches below grade and measured 11 inches tall by 5 inches E-W by 7 inches N-S. The lower stone was found directly below the top stone at 14 inches deep and measured 8 inches by 8 inches by 6 inches. No specific markings were observed on the stones. With the top stone being vertical and directly above the lower stone, the two stones appeared in the field to be purposely set as cornerstones and did not appear to be acting as braces for the adjacent post. Extensive probing and manual excavation around the post revealed no further evidence of the corner. The rock mentioned in the 1869 record was not found. It is noted that this corner is in a local low area which appears to have been muddy and wet over the years. It has been observed at other corners that such a condition yields less likelihood of finding specifically described monuments from the 1800s. The post is neither large nor evidently ancient but the position of the post and stones fit very well with the relative distances to proximate corners and fit well with remote evidence of fences to the south and west. The two stones were accepted as providing the best available evidence of the corner. The stones were removed and replaced with a Harrison monument in the same position.



  
Kenneth E. Hedge, County Surveyor

  
James S. Swift, IN LS 20200054  
March 14, 2018

Marion  
Township

Section 28  
T20N, R2E



Section 33  
T20N, R2E

# SECTION CORNER RECORD

## BOONE COUNTY SURVEYOR'S OFFICE

NE 700-900

State Plane grid coordinates NAD83 (CORS96):

North: 1783792.92 East: 3172020.45 (U.S. survey feet)

Type of monument: Harrison, 4" disk 'Section Corner'

Depth: One inch below adjacent road surface

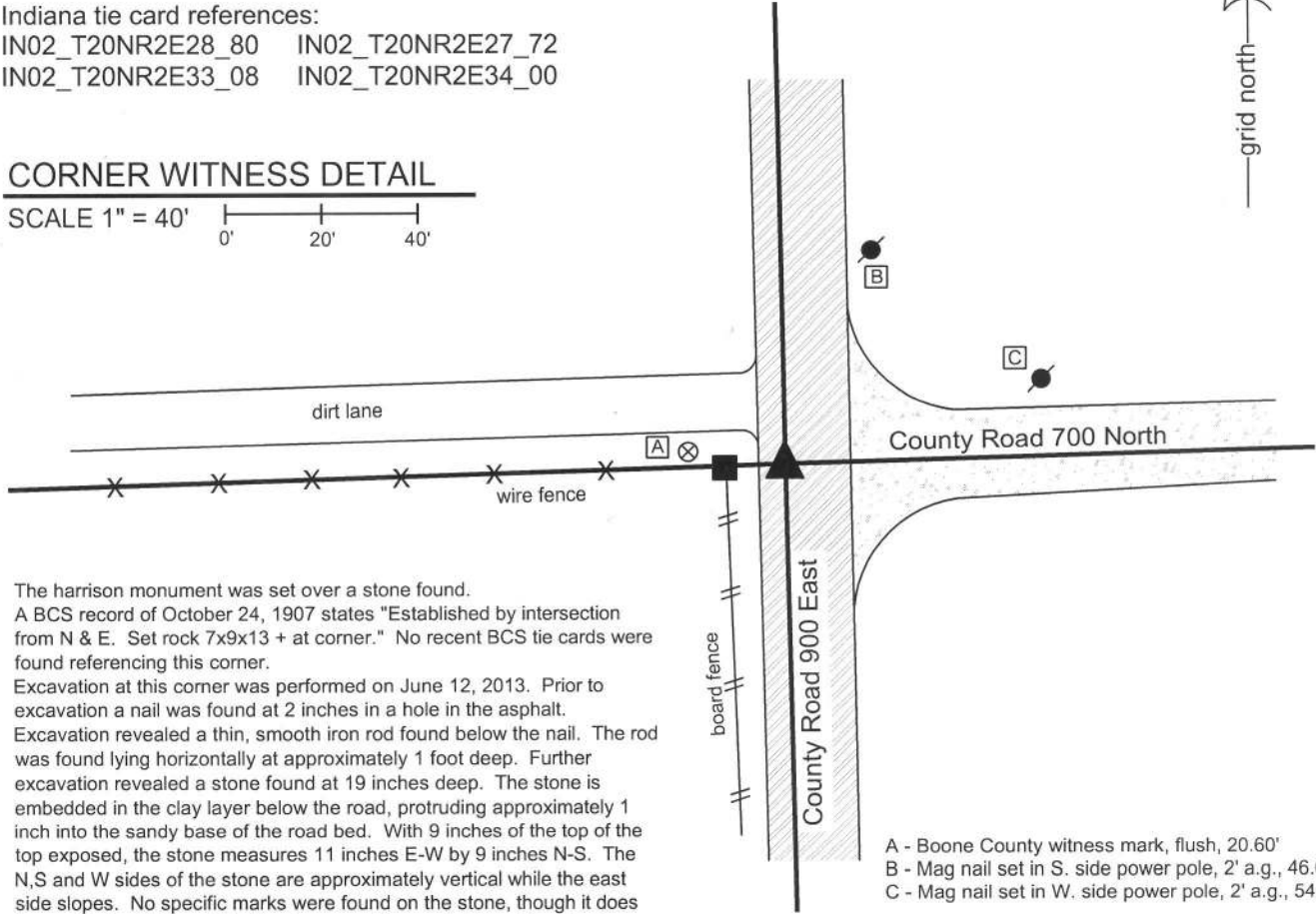
Indiana tie card references:

IN02\_T20NR2E28\_80 IN02\_T20NR2E27\_72

IN02\_T20NR2E33\_08 IN02\_T20NR2E34\_00

### CORNER WITNESS DETAIL

SCALE 1" = 40'



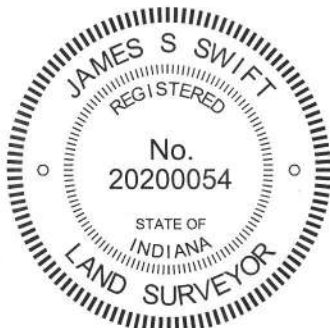
The harrison monument was set over a stone found.  
 A BCS record of October 24, 1907 states "Established by intersection from N & E. Set rock 7x9x13 + at corner." No recent BCS tie cards were found referencing this corner.

Excavation at this corner was performed on June 12, 2013. Prior to excavation a nail was found at 2 inches in a hole in the asphalt. Excavation revealed a thin, smooth iron rod found below the nail. The rod was found lying horizontally at approximately 1 foot deep. Further excavation revealed a stone found at 19 inches deep. The stone is embedded in the clay layer below the road, protruding approximately 1 inch into the sandy base of the road bed. With 9 inches of the top of the top exposed, the stone measures 11 inches E-W by 9 inches N-S. The N,S and W sides of the stone are approximately vertical while the east side slopes. No specific marks were found on the stone, though it does have a distinct high point at the top, near the west edge. The stone appears to be slightly larger than that described in the 1907 record though of similar proportions in the E-W and N-S dimensions. It is not clear whether this is the same monument as described in the 1907 record. The stone is west of the center of the road at the intersection but in line with the center of the road extended north and south. The stone is in line with the fence to the west and the road to the east. The stone was left in place and a harrison monument was set over the top, high point of the stone. The nail, removed during excavation, had been 0.4 foot north and 2.5 feet east of the stone.

This corner was originally established as a wood post in 1821.

- A - Boone County witness mark, flush, 20.60'
- B - Mag nail set in S. side power pole, 2' a.g., 46.64'
- C - Mag nail set in W. side power pole, 2' a.g., 54.44'

Boone County witness mark is a 3/8" diameter x 2' long rebar bearing a metal cap stamped "Boone County Witness Point."



*Kenneth E. Hedge*  
 Kenneth E. Hedge, County Surveyor

*James S. Swift*  
 James S. Swift, IN LS 20200054  
 February 5, 2015

Marion Township

Section 28 T20N, R2E	Section 27 T20N, R2E
Section 33 T20N, R2E	Section 34 T20N, R2E

PHOTOGRAPHIC DOCUMENTATION

Date of photography: June 12, 2013

View of the stone as first exposed.



View of the stone from above.



View from the north,  
looking south along C.R. 900 East.



View from the east,  
looking west along the adjacent fence line.



For details and documentation, refer to related sheet "Section Corner Record."

# SECTION CORNER RECORD

NE 750-800

## BOONE COUNTY SURVEYOR'S OFFICE

State Plane grid coordinates NAD83 (CORS96):

North: 1786255.50 East: 3166643.95 (U.S. survey feet)

Type of monument: Harrison, 4" disk 'Section Corner'

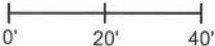
Depth: six inches below adjacent gravel road surface

Indiana tie card references:

IN02\_T20NR2E29\_44

IN02\_T20NR2E28\_36

### CORNER WITNESS DETAIL

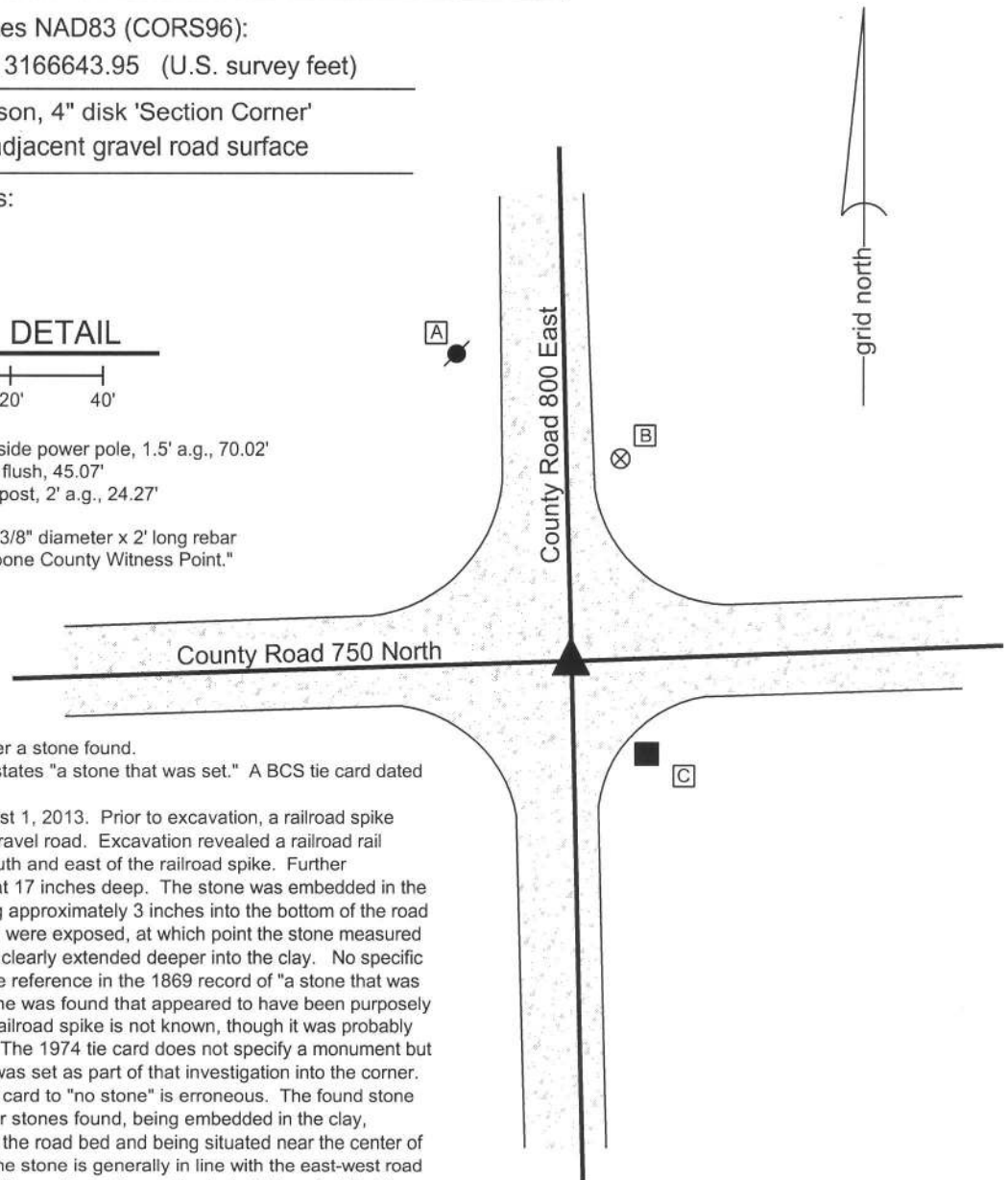
SCALE 1" = 40' 

A - Nail in bottle cap found in E. side power pole, 1.5' a.g., 70.02'

B - Boone County witness mark, flush, 45.07'

C - Mag nail set in N. side wood post, 2' a.g., 24.27'

Boone County witness mark is a 3/8" diameter x 2' long rebar bearing a metal cap stamped "Boone County Witness Point."



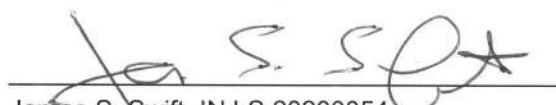
The harrison monument was set over a stone found.

A BCS record of January 23, 1869 states "a stone that was set." A BCS tie card dated July 24, 1974 states "no stone."

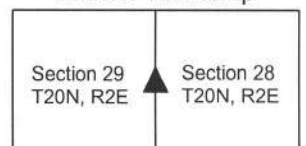
This corner was excavated on August 1, 2013. Prior to excavation, a railroad spike was found at 2 inches deep in the gravel road. Excavation revealed a railroad rail found at 10 inches deep, slightly south and east of the railroad spike. Further excavation revealed a stone found at 17 inches deep. The stone was embedded in the clay layer below the road, protruding approximately 3 inches into the bottom of the road bed. The top 10 inches of the stone were exposed, at which point the stone measured 14 inches E-W by 9 inches N-S and clearly extended deeper into the clay. No specific marks were found on the stone. The reference in the 1869 record of "a stone that was set" is interpreted as meaning a stone was found that appeared to have been purposely set by humans. The source of the railroad spike is not known, though it was probably set as a witness to the railroad rail. The 1974 tie card does not specify a monument but it is most likely that the railroad rail was set as part of that investigation into the corner. Clearly the reference in the 1974 tie card to "no stone" is erroneous. The found stone fits with the character of other corner stones found, being embedded in the clay, protruding slightly into the bottom of the road bed and being situated near the center of the intersection of the two roads. The stone is generally in line with the east-west road beds. It is towards the east edge of the north-south road beds, but it is noted that the corners to the north and south were also east of the center of County Road 800 East. The stone was accepted as the best evidence of the corner and a harrison monument was set over the top, high point of the stone. The railroad spike and railroad rail, both removed during excavation, had been 3 feet west and 1.3 feet north of the high point of the stone. This corner was originally established as a wood post in 1821.



  
Kenneth E. Hedge, County Surveyor

  
James S. Swift, IN LS 20200054  
February 5, 2015

Marion Township



PHOTOGRAPHIC DOCUMENTATION

Date of photography: August 1, 2013

View of the stone as first exposed.



View of the stone more fully exposed.



View from above the stone, looking North along County Road 800 East.



View from above the stone, looking South along County Road 800 East.



For details and documentation, refer to related sheet "Section Corner Record."

# SECTION CORNER RECORD

NE 750-900

## BOONE COUNTY SURVEYOR'S OFFICE

State Plane grid coordinates NAD83 (CORS96):

North: 1786440.26 East: 3171966.44 (U.S. survey feet)

Type of monument: Harrison, 4" disk 'Section Corner'

Depth: One inch below adjacent road surface

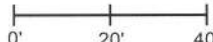
Indiana tie card references:

IN02\_T20NR2E28\_44

IN02\_T20NR2E27\_36

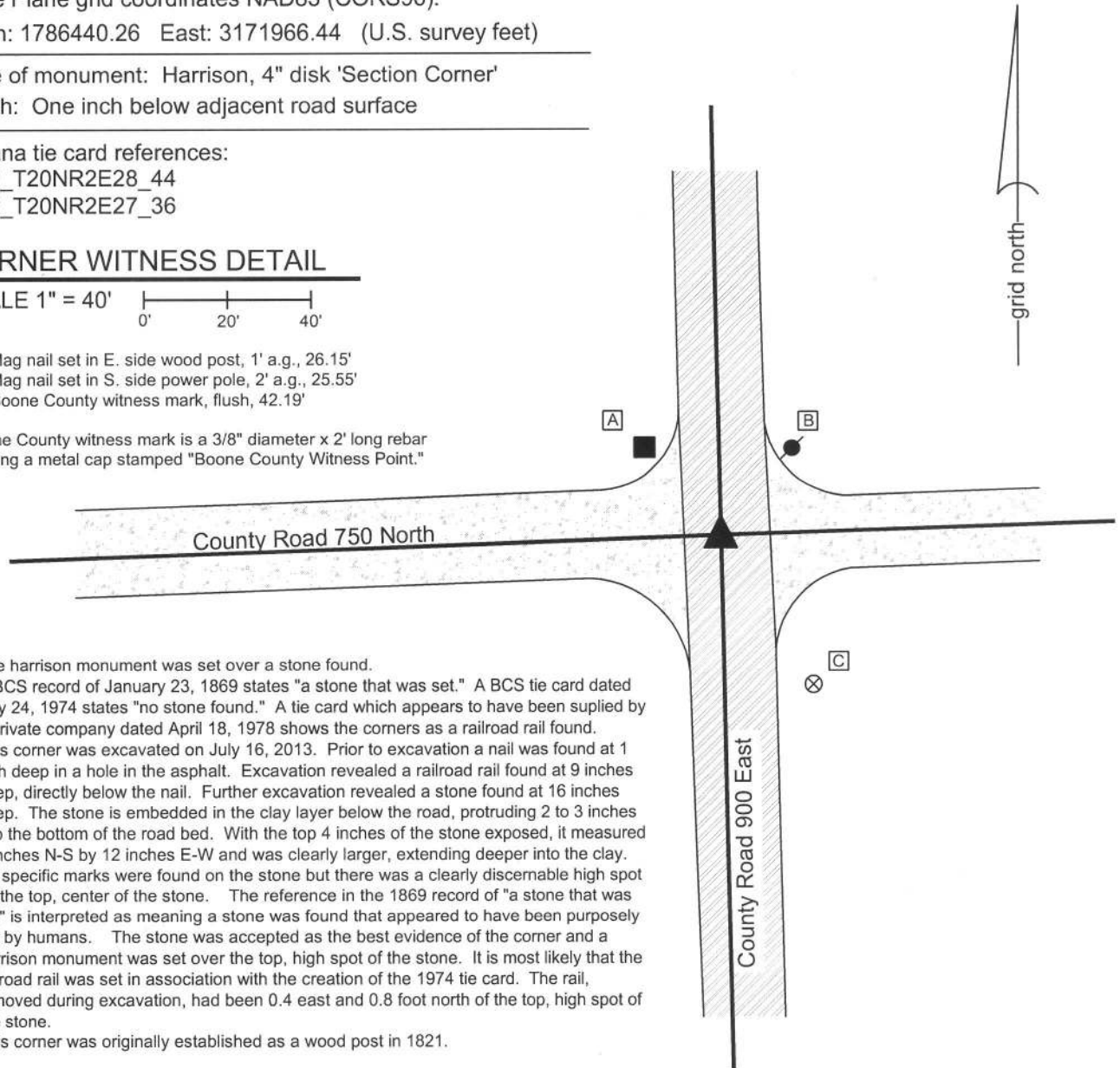
### CORNER WITNESS DETAIL

SCALE 1" = 40'



- A - Mag nail set in E. side wood post, 1' a.g., 26.15'
- B - Mag nail set in S. side power pole, 2' a.g., 25.55'
- C - Boone County witness mark, flush, 42.19'

Boone County witness mark is a 3/8" diameter x 2' long rebar bearing a metal cap stamped "Boone County Witness Point."



The Harrison monument was set over a stone found.

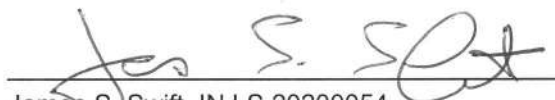
A BCS record of January 23, 1869 states "a stone that was set." A BCS tie card dated July 24, 1974 states "no stone found." A tie card which appears to have been supplied by a private company dated April 18, 1978 shows the corners as a railroad rail found.

This corner was excavated on July 16, 2013. Prior to excavation a nail was found at 1 inch deep in a hole in the asphalt. Excavation revealed a railroad rail found at 9 inches deep, directly below the nail. Further excavation revealed a stone found at 16 inches deep. The stone is embedded in the clay layer below the road, protruding 2 to 3 inches into the bottom of the road bed. With the top 4 inches of the stone exposed, it measured 9 inches N-S by 12 inches E-W and was clearly larger, extending deeper into the clay. No specific marks were found on the stone but there was a clearly discernable high spot on the top, center of the stone. The reference in the 1869 record of "a stone that was set" is interpreted as meaning a stone was found that appeared to have been purposely set by humans. The stone was accepted as the best evidence of the corner and a Harrison monument was set over the top, high spot of the stone. It is most likely that the railroad rail was set in association with the creation of the 1974 tie card. The rail, removed during excavation, had been 0.4 east and 0.8 foot north of the top, high spot of the stone.

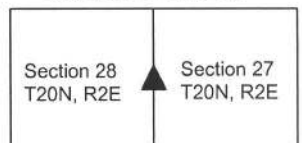
This corner was originally established as a wood post in 1821.



  
Kenneth E. Hedge, County Surveyor

  
James S. Swift, IN LS 20200054  
February 5, 2015

Marion Township



PHOTOGRAPHIC DOCUMENTATION

Date of photography: July 16, 2013

View of the stone from above and north.



View of the stone from above and west.



View from the north, looking across the stone and south along County Road 900 East.



View from the west, looking across the stone and east along County Road 750 North.



For details and documentation, refer to related sheet "Section Corner Record."



# SECTION CORNER RECORD

NE 800-800

## BOONE COUNTY SURVEYOR'S OFFICE

State Plane grid coordinates NAD83 (CORS96):

North: 1788903.10 East: 3166578.27 (U.S. survey feet)

Type of monument: Harrison, 4" disk 'Section Corner'

Depth: six inches below adjacent gravel road surface

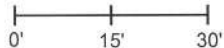
Indiana tie card references:

IN02\_T20NR2E20\_80 IN02\_T20NR2E21\_72

IN02\_T20NR2E29\_08 IN02\_T20NR2E28\_00

### CORNER WITNESS DETAIL

SCALE 1" = 30'



- A - Boone County witness mark, flush, 71.35'
- B - Mag nail set in E. side power pole, 2' a.g., 29.97'
- C - N.W. corner, concrete block garage, 30.17'
- D - S.W. corner, concrete block garage, 38.26'

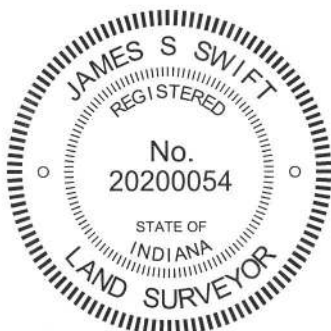
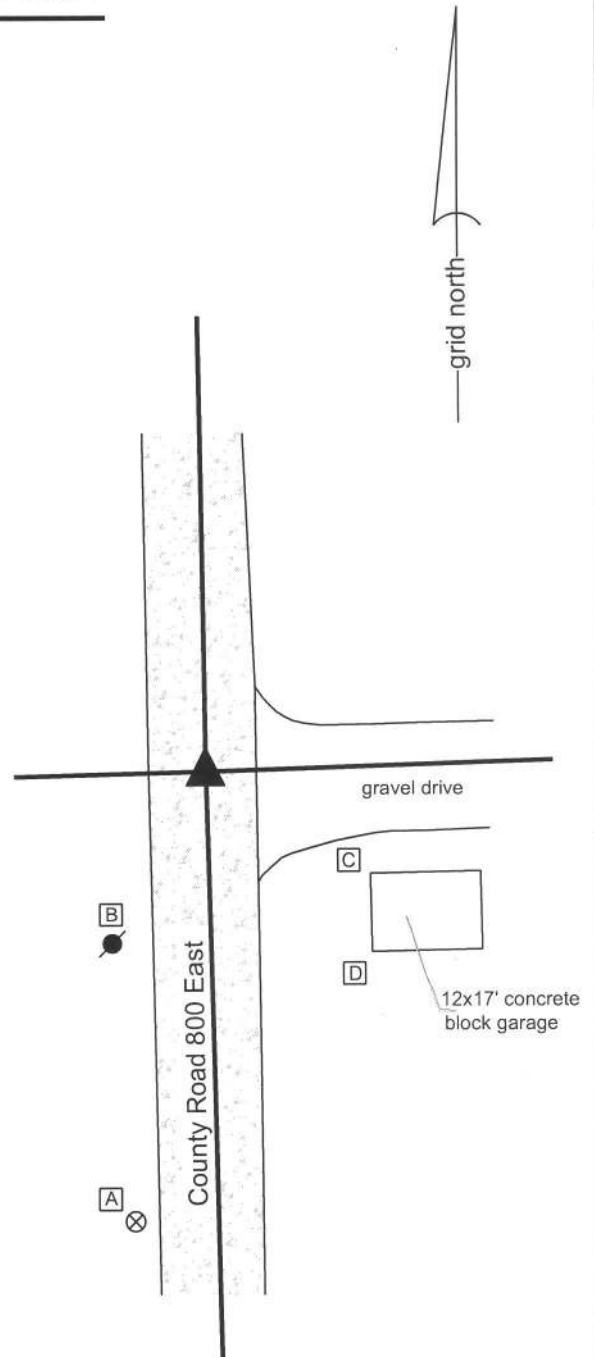
Boone County witness mark is a 3/8" diameter x 2' long rebar bearing a metal cap stamped "Boone County Witness Point."

The harrison monument was set over a stone found.

A BCS record of February 16, 1869 states "reestablished from trees (both green) Set two rocks one 17.13 by 5 in (+) Top One 19.17 by 13 in +." A BCS tie card dated August 23, 1974 states "wood stake found."

This corner was excavated on July 26, 2013. Prior to excavation, a railroad spike was found at 1 inch deep in the gravel road. Excavation revealed a stone found at 12 inches deep. The stone was embedded in the clay layer below the road, with the top of the stone at the bottom of the road bed. The stone is of an odd, triangular shape and specific N-S/E-W dimensions were difficult to positively identify. The top 7 inches of the stone were exposed, at which point the stone appeared to be approximately 14 inches N-S by 12 inches E-W. Using a probe, another stone was detected below at 13 inches from the top of the top stone. An etched "+" mark was clearly visible at the top of the stone, near the high point of the stone. The stone was accepted as marking the corner. Two rebars being 3/8 inch diameter x 2 feet long were driven at an angle near the northwest and southwest sides of the triangular shaped stone. The top 5 inches of the stone and the top of the rebars were all encased in concrete and a harrison monument (4 inch spacer with a lid) was set over the etched + mark on the stone. The railroad spike, removed during excavation, had been 0.3 foot south and 0.4 foot east.

This corner was originally established as a wood post in 1821.



*Kenneth E. Hedge*  
 Kenneth E. Hedge, County Surveyor

*James S. Swift*  
 James S. Swift, IN LS 20200054  
 February 5, 2015

Marion Township

Section 20 T20N, R2E	Section 21 T20N, R2E
Section 29 T20N, R2E	Section 28 T20N, R2E

PHOTOGRAPHIC DOCUMENTATION

Date of photography: July 26, 2013

View of the top, east side of the stone with the etched mark exposed.



View of the top, east side of the stone, washed.



View of the stone as first exposed and the post on the west side of the road.



View from the north, looking across the stone and south along County Road 800 East.



For details and documentation, refer to related sheet "Section Corner Record."

# SECTION CORNER RECORD

NE 800-850

## BOONE COUNTY SURVEYOR'S OFFICE

State Plane grid coordinates NAD83 (2011):

North: 1788988.79 East: 3169238.51 (U.S. survey feet)

Type of monument: Harrison, 4" disk 'Section Corner'

Depth: Three inches above adjacent ground

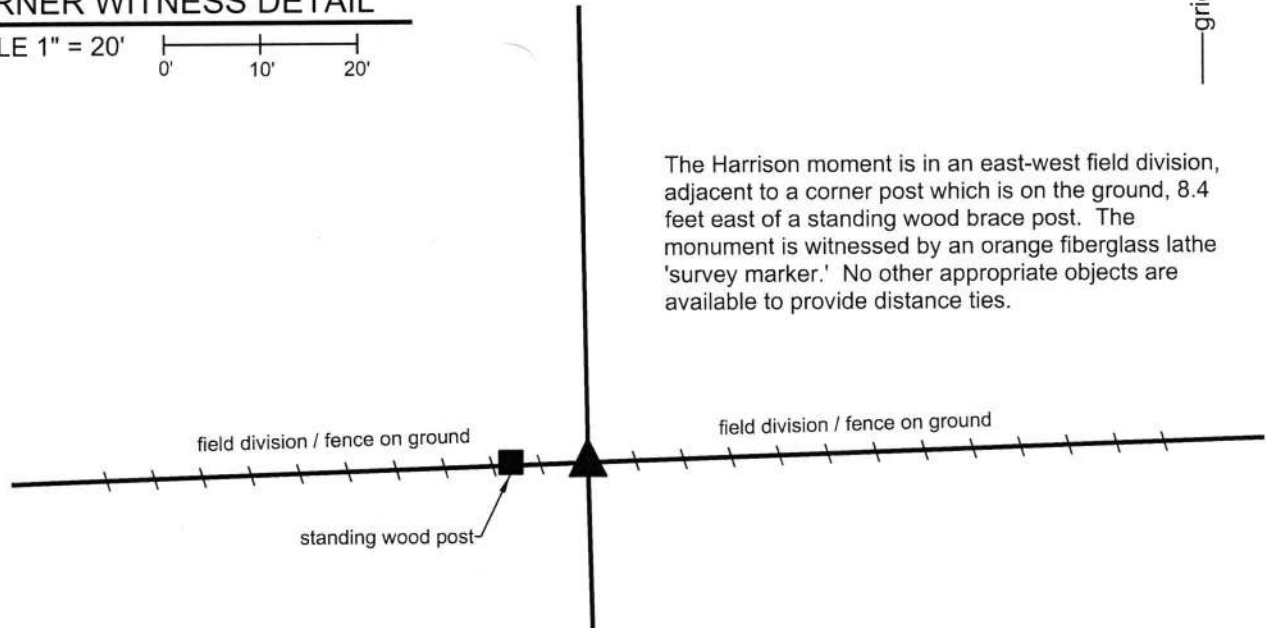
Indiana tie card references:

IN02\_T20NR2E21\_76 IN02\_T20NR2E28\_04



### CORNER WITNESS DETAIL

SCALE 1" = 20'



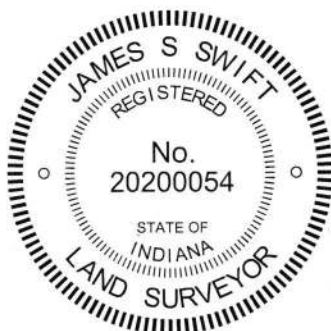
The Harrison moment is in an east-west field division, adjacent to a corner post which is on the ground, 8.4 feet east of a standing wood brace post. The monument is witnessed by an orange fiberglass lathe 'survey marker.' No other appropriate objects are available to provide distance ties.

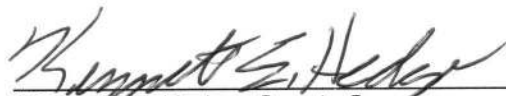
The Harrison monument was set in place of the remnants of the base of a wood corner post found.


A BCS record of February 16, 1869 states, with respect to this corner, "Found from stump of one tree. Drove no stake." No recent BCS tie cards were found referencing this corner.

Excavation was performed at this corner on March 16, 2018. Prior to excavation, a wood corner post was found on the ground. The post, as found, has clearly fallen toward the south. The post still has fencing (on the ground) attached to the east and west sides and a wood brace remains attached to the west edge of the post. The brace is also attached to the brace post which remains standing to the west. Note, the brace is essentially at ground level, hence it can be attached to both a standing and a fallen post. Further inspection of the corner post indicates that fencing toward the north was previously attached to the post, but now cut-off. Various stones were found on either side of the post, none of which bear the characteristics of a purposely set corner stone. It is noted that the corner post is approximately 5 feet west of a theoretical position for the corner computed with respect to the relative positions of posts found 1/4 mile east and west, respectively, and the previously established corners 1/2 mile east and west, respectively. However, it is also noted that neither of the 1/4 mile posts fall along the half-mile straight lines connecting the section corners to the east and west with the found corner post. Hence, general uncertainties of up to five feet in all directions are attributed to the relative positions of the corner and the supplemental evidence found 1/4 mile east and west of the subject corner.

The remnants of the base of the corner post, as found in the ground, were accepted as the best available evidence of the original position of the corner. A Harrison monument was set in place of said remnants. The portion of the post lying on the ground was left in place, with the down fence still attached. This corner was originally established as a wood post in 1821.



  
Kenneth E. Hedge, County Surveyor

  
James S. Swift, IN LS 20200054  
April 3, 2018

Marion  
Township

Section 21  
T20N, R2E

Section 28  
T20N, R2E

# SECTION CORNER RECORD

## BOONE COUNTY SURVEYOR'S OFFICE

NE 800-900

State Plane grid coordinates NAD83 (CORS96):

North: 1789073.68 East: 3171911.56 (U.S. survey feet)

Type of monument: Harrison, 4" disk 'Section Corner'

Depth: One inch below adjacent road surface

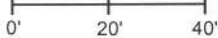
Indiana tie card references:

IN02\_T20NR2E21\_80 IN02\_T20NR2E22\_72

IN02\_T20NR2E28\_08 IN02\_T20NR2E27\_00

### CORNER WITNESS DETAIL

SCALE 1" = 40'



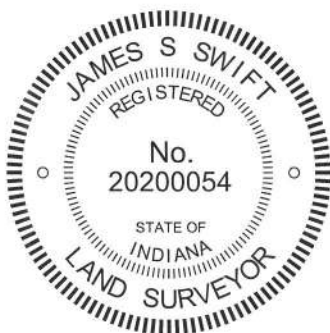
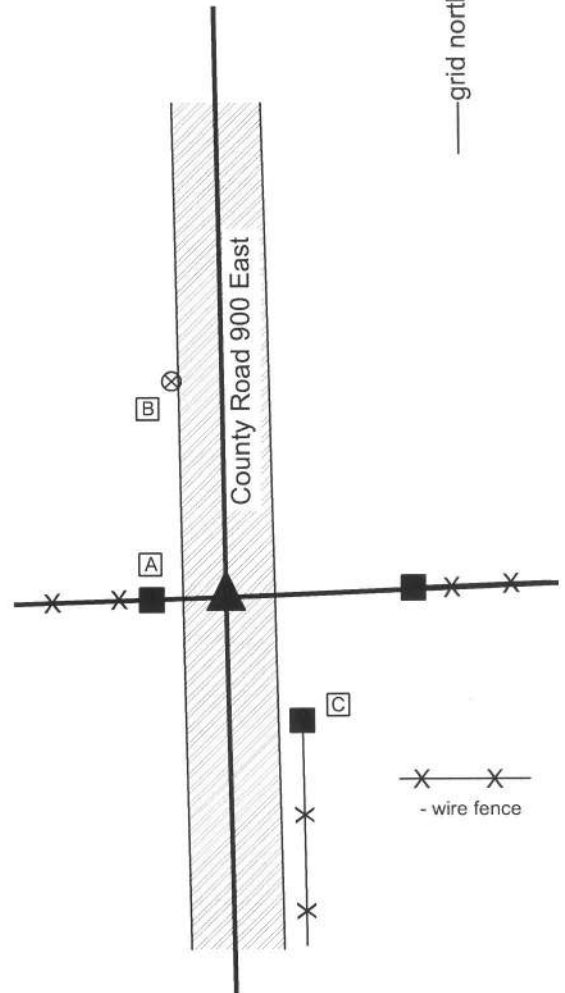
- A - Mag nail set in N. side, wood end post, 15.5'
- B - Boone County witness mark, flush, 46.2'
- C - Mag nail set in W. side wood end post, 2' a.g., 30.0'

Boone County witness mark is a 3/8" diameter x 2' long rebar bearing a metal cap stamped "Boone County Witness Point."

The harrison monument was set over a stone found.

A BCS record of February 17-18, 1869 states "Reestablished at intersection of lines 5.15 north of the stump of Elm sight tree called for. Set two rocks, one 7.5.4 marked +. Top rock 16.8.7 1/2 +." It is noted that the Elm sight tree is mentioned in the original federal notes as "A W Elm 14 in. diam." at 74.85 chains north along the line between sections 27 and 28. A tie card which appears to have been supplied by a private company, dated April 18, 1978 states "fnd. stone 0.7' deep, chiseled 'x'."

This corner was excavated on July 16, 2013. Prior to excavation a railroad spike was found at 3 inches deep in a hole in the asphalt. The railroad spike agreed with the remaining distance ties from the 1978 card. Excavation revealed a stone found at 9 inches deep, directly below the railroad spike. With the top 6 inches of the stone exposed, it measure 7 inches N-S by 8 inches E-W with a clearly chiseled + mark on the top and the high point, near the west edge of the top of the stone. The north and west sides of the stone were flat and vertical. The railroad spike had been approximately 1 inch east of the etched + mark but was clearly over the top of the stone. The stone was left in place and a harrison monument was set over it in the position of the railroad spike as originally found. This corner was originally established as a wood post in 1822.



*Kenneth E. Hedge*  
 Kenneth E. Hedge, County Surveyor

*James S. Swift*  
 James S. Swift, IN LS 20200054  
 February 5, 2015

Marion Township

Section 21 T20N, R2E	Section 22 T20N, R2E
Section 28 T20N, R2E	Section 27 T20N, R2E

PHOTOGRAPHIC DOCUMENTATION

Date of photography: July 16, 2013

View of the stone from above and north.



The stone washed, showing the etched + and the rust mark from the railroad spike.



View of the stone from above and east.



For details and documentation, refer to related sheet "Section Corner Record."

View from the south, looking across the stone and north along County Road 900 East.

