

SECTION CORNER RECORD

BOONE COUNTY SURVEYOR'S OFFICE

NE 100-200

State Plane grid coordinates NAD83 (CORS96):
 North: 1750931.27 East: 3135138.96 (U.S. survey feet)

Type of monument: Harrison, 4" disk 'Section Corner'
 Depth: six inches below adjacent gravel road surface

Indiana tie card references:
 IN02_T19NR1E29_80 IN02_T19NR1E28_72
 IN02_T19NR1E32_08 IN02_T19NR1E33_00

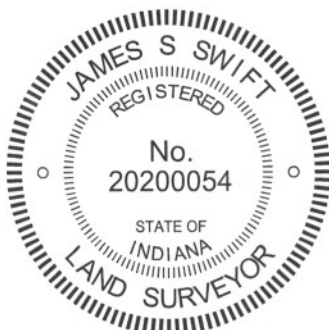
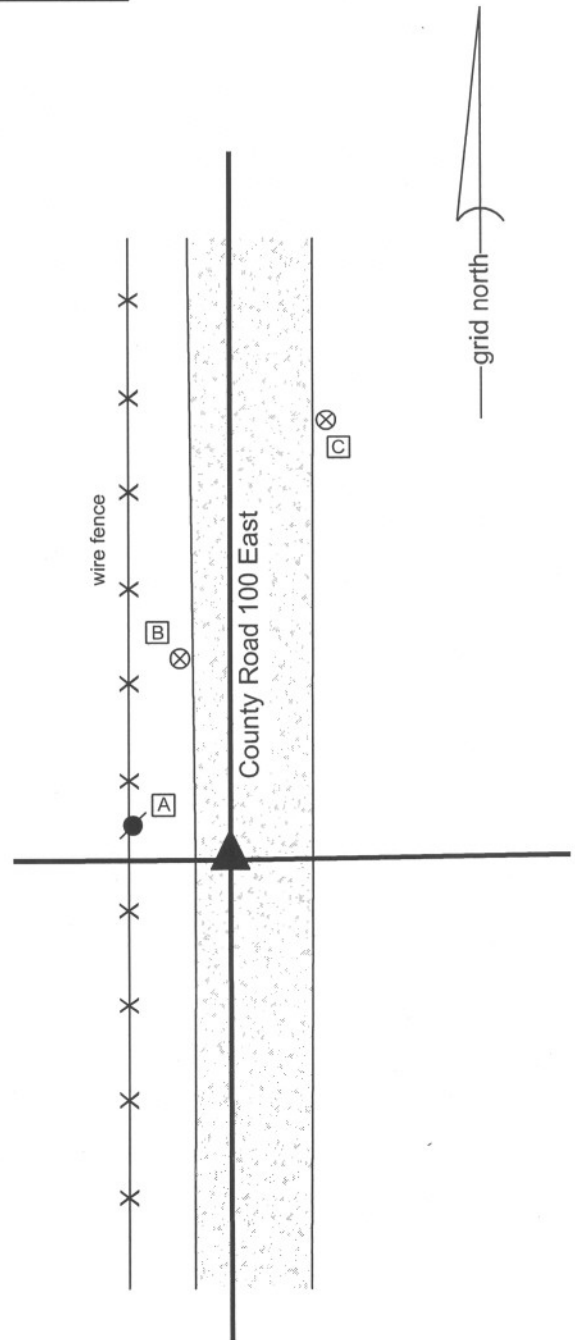
CORNER WITNESS DETAIL

SCALE 1" = 30'
 0' 15' 30'

- A - Mag nail set in W. side power pole, 2' a.g., 14.60'
- B - Boone County witness mark, flush, 32.15'
- C - Boone County witness mark, flush, 70.40'

Boone County witness mark is a 3/8" diameter x 2' long rebar bearing a metal cap stamped "Boone County Witness Point."

The harrison monument was set in place of a stone found and directly over a vertical section of clay tile found.
 A BCS Record dated April 1, 1893 states "Found from Walnut Stump, Red Oak (about 3 links further than call). Set rock mark + 22.10.10 at corner. 4 inch tile filled with sand and gravel under." A BCS tie card dated August 1, 2005 shows the corner as a harrison monument with no documentation of source.
 This corner was excavated on June 20, 2012. Prior to excavation a harrison monument was found at 1-1/2 inches below grade, the position of which agrees with the 2005 distance ties. Excavation revealed the record stone found at 2 inches below grade. The stone is leaning slightly WNW. As stood up top of the stone was at the surface of the gravel road. The top of the stone measures 8 inches N-S by 8 inches E-W. The stone was well embedded in the clay layer below the road bed, protruding approximately 6 inches out of the clay, which depth represents the entire thickness of the existing road bed. The stone was removed and found to measure 10 inches by 10 inches by 20 inches tall, in agreement with the 1893 record. No specific marking were detected on the stone. Directly below the stone, the top of a vertical piece of 4 inch diameter clay tile was found, also in agreement with the 1893 record. The tile was left in place and a harrison monument was set over it, in place of the stone.
 The harrison monument documented on the 2005 tie card was removed during excavation. This monument had been 1.4 feet east and 3.1 feet north of the stone and clay tile.
 This corner was originally established as a wood post in June, 1822.



Kenneth E. Hedge
 Kenneth E. Hedge, County Surveyor

James S. Swift
 James S. Swift, IN LS 20200054
 January 15, 2013

Center Township

Section 29 T19N, R1E	Section 28 T19N, R1E
Section 32 T19N, R1E	Section 33 T19N, R1E

PHOTOGRAPHIC DOCUMENTATION

Date of photography: June 20, 2012

The stone as originally found leaning.
View from the east.



The stone stood up.
View from the east.



The stone stood up.
View from the north.



Top of the piece of tile from above.



For details and documentation, refer to related sheet "Section Corner Record."

SECTION CORNER RECORD

NE 100-250

BOONE COUNTY SURVEYOR'S OFFICE

State Plane grid coordinates NAD83 (2011):

North: 1750967.04 East: 3137789.54 (U.S. survey feet)

Type of monument: Harrison, 4" disk 'Section Corner'

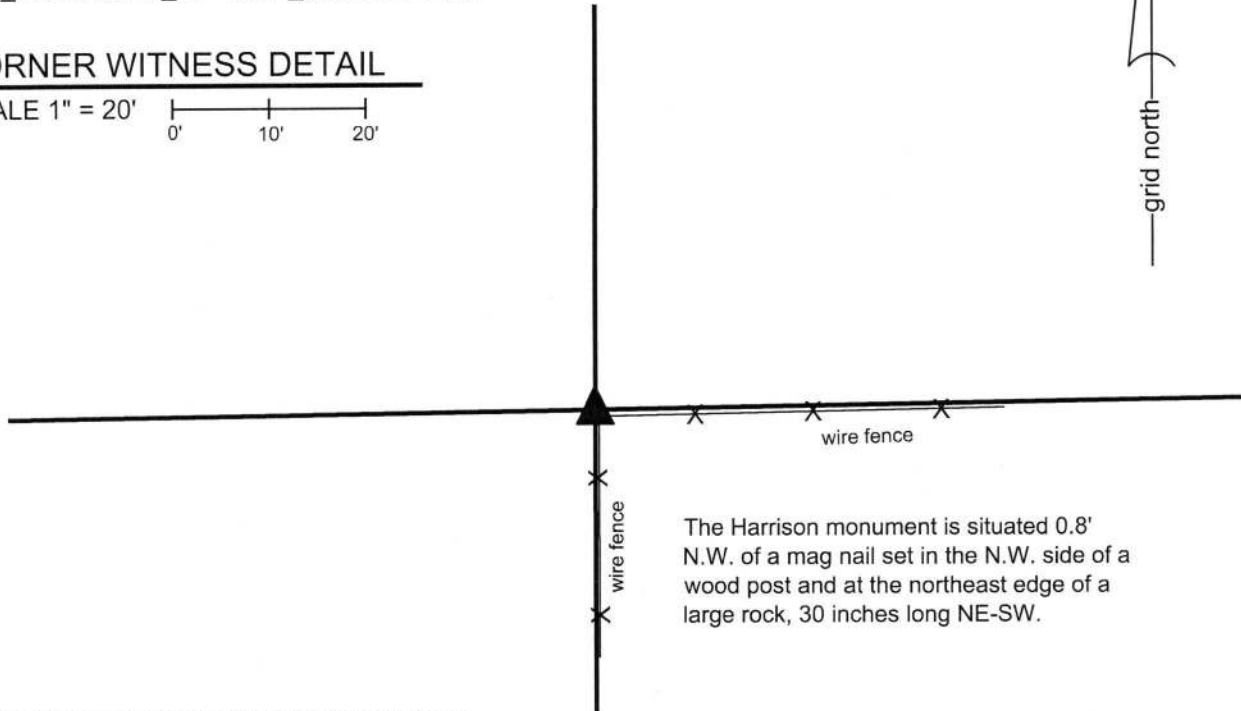
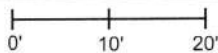
Depth: Two inches above adjacent ground

Indiana tie card references:

IN02_T19NR1E28_76 IN02_T19NR1E33_04

CORNER WITNESS DETAIL

SCALE 1" = 20'



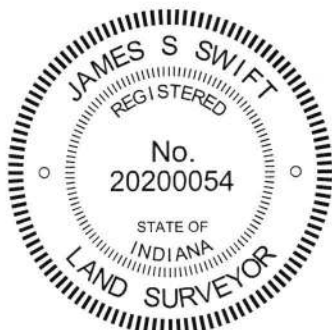
The Harrison monument was set in place of a rebar found.

A BCS record of April 1, 1893 states, with respect to this corner, "Rock here claimed by some as being the correct corner and doubted by others but after running the line from North as found from bearing trees at both corners concluded that it is the same from which the subdivision was made and recognize it as the original corner."

A BCS tie card dated January 18, 1994 shows the corner as a rebar with cap at the northwest edge of a corner post.

This corner was monumented on November 1, 2017. The rebar shown on the 1994 corner was found at the northwest edge of a post, as shown on the tie card, bearing a yellow plastic cap stamped 'Dodge SO288.' The corner post is not ancient and is leaning substantially towards the southeast. Many rocks were found around and in the immediate vicinity of the corner post. The 1893 record is not specific about the dimensions of the rock accepted at that time as being the corner. Given the substantial amount of rocks found at the corner, it is not possible to determine which of those rocks might represent the corner as held in 1893. It is noted that the measurements included with the 1893 record show unequal distances to the section corners to the east and west. Applying the standard scale factor of 1.00415 (used throughout the county for measurements reported between 1860 and 1895) to the 1893 measurements, the distance to the section corner to the east nearly exactly matches the 1893 record and the distance to the section corner to the west is 2 feet short of the 1893 distance. Hence, uncertainties of approximately 2 feet east-west are associated with the position of the found rebar and the 1893 record. This is considered a minimal uncertainty with respect to such an old record and the near match of the respective, imbalanced distances is considered confirmation that the position of the rebar closely matches the position of the corner as determined in 1893. As noted, however, the rock described in the 1893 record was not identified. The rebar was held as marking the corner. The rebar was removed and replaced with a Harrison monument in the same position.

This corner was originally established as a wood post in 1821.



Kenneth E. Hedge
Kenneth E. Hedge, County Surveyor

James S. Swift
James S. Swift, IN LS 20200054
November 21, 2017

Center Twp

Section 28
T19N, R1E

Section 33
T19N, R1E

SECTION CORNER RECORD

NE 100-300

BOONE COUNTY SURVEYOR'S OFFICE

State Plane grid coordinates NAD83 (CORS96):

North: 1751007.27 East: 3140451.53 (U.S. survey feet)

Type of monument: Harrison, 4" disk 'Section Corner'

Depth: One inch below adjacent road surface

Indiana tie card references:

IN02_T19NR1E27_72

IN02_T19NR1E28_80

IN02_T19NR1E33_08

IN02_T19NR1E34_00

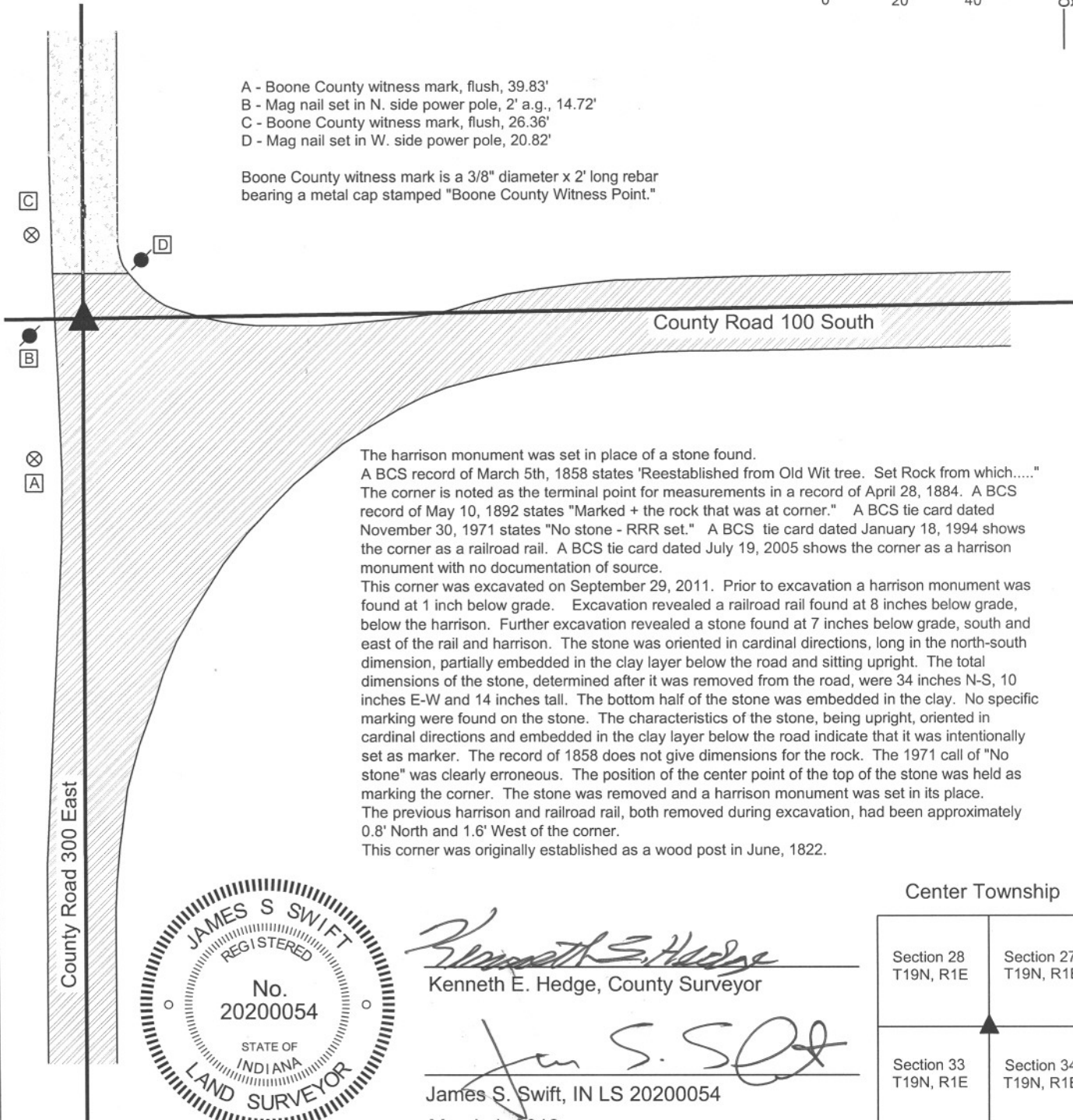
CORNER WITNESS DETAIL

SCALE 1" = 40'



- A - Boone County witness mark, flush, 39.83'
- B - Mag nail set in N. side power pole, 2' a.g., 14.72'
- C - Boone County witness mark, flush, 26.36'
- D - Mag nail set in W. side power pole, 20.82'

Boone County witness mark is a 3/8" diameter x 2' long rebar bearing a metal cap stamped "Boone County Witness Point."

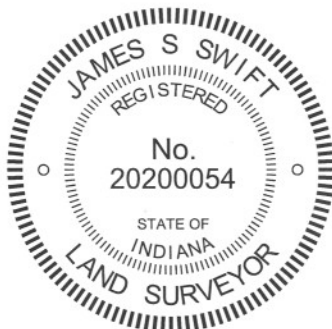


The harrison monument was set in place of a stone found.

A BCS record of March 5th, 1858 states "Reestablished from Old Wit tree. Set Rock from which....." The corner is noted as the terminal point for measurements in a record of April 28, 1884. A BCS record of May 10, 1892 states "Marked + the rock that was at corner." A BCS tie card dated November 30, 1971 states "No stone - RRR set." A BCS tie card dated January 18, 1994 shows the corner as a railroad rail. A BCS tie card dated July 19, 2005 shows the corner as a harrison monument with no documentation of source.

This corner was excavated on September 29, 2011. Prior to excavation a harrison monument was found at 1 inch below grade. Excavation revealed a railroad rail found at 8 inches below grade, below the harrison. Further excavation revealed a stone found at 7 inches below grade, south and east of the rail and harrison. The stone was oriented in cardinal directions, long in the north-south dimension, partially embedded in the clay layer below the road and sitting upright. The total dimensions of the stone, determined after it was removed from the road, were 34 inches N-S, 10 inches E-W and 14 inches tall. The bottom half of the stone was embedded in the clay. No specific marking were found on the stone. The characteristics of the stone, being upright, oriented in cardinal directions and embedded in the clay layer below the road indicate that it was intentionally set as marker. The record of 1858 does not give dimensions for the rock. The 1971 call of "No stone" was clearly erroneous. The position of the center point of the top of the stone was held as marking the corner. The stone was removed and a harrison monument was set in its place. The previous harrison and railroad rail, both removed during excavation, had been approximately 0.8' North and 1.6' West of the corner.

This corner was originally established as a wood post in June, 1822.



Kenneth E. Hedge
 Kenneth E. Hedge, County Surveyor

James S. Swift
 James S. Swift, IN LS 20200054
 March 1, 2012

Center Township

Section 28 T19N, R1E	Section 27 T19N, R1E
Section 33 T19N, R1E	Section 34 T19N, R1E

PHOTOGRAPHIC DOCUMENTATION

Date of photography: September 29, 2011

View of the stone as first exposed.



View of the stone with more exposed.



View of the stone from the west, looking down county Road 100 North from the intersection.



For details and documentation, refer to related sheet "Section Corner Record."

SECTION CORNER RECORD

BOONE COUNTY SURVEYOR'S OFFICE

NE 150-200

State Plane grid coordinates NAD83 (CORS96):
 North: 1753567.88 East: 3135140.10 (U.S. survey feet)
 Type of monument: Harrison, 4" disk 'Section Corner'
 Depth: six inches below adjacent gravel road surface

Indiana tie card references:
 IN02_T19NR1E28_36
 IN02_T19NR1E29_44



CORNER WITNESS DETAIL

SCALE 1" = 40' 0' 20' 40'

- A - Mag nail set in W. side power pole, 1' a.g., 12.17'
- B - Boone County witness mark, flush, 47.14'
- C - S.E. corner of barn (aluminum siding), 48.20'

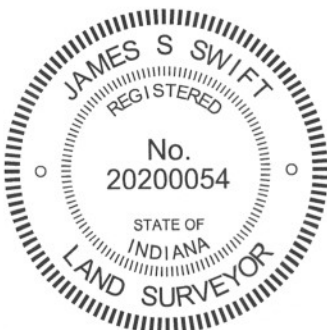
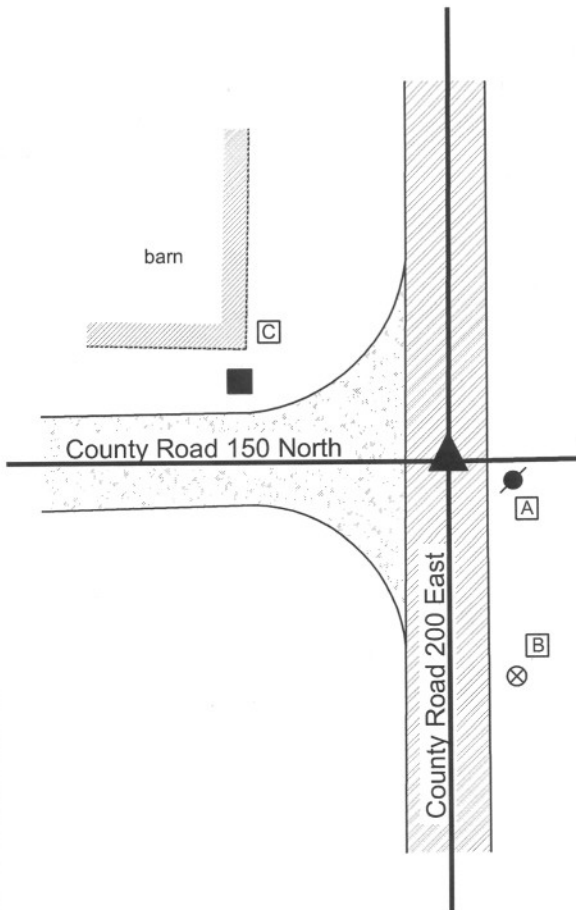
Boone County witness mark is a 3/8" diameter x 2' long rebar bearing a metal cap stamped "Boone County Witness Point."

The harrison monument was set in place of a vertical section of railroad rail found. A BCS record of October 29, 1868 states "Reestablished from the Oak B.T. Set Rock 19.8 by 6 in. marked +." A BCS tie card dated May 12, 1967 states "No stone found." A BCS tie card dated July 28, 2005 shows the corner as a harrison monument with no documentation of source.

This corner was excavated on June 20, 2012. Prior to excavation a vertical section of railroad rail was found at 11 inches deep in the approximate center of the intersection. Excavation revealed several rocks in the vicinity of the rail. None of the rocks matched the dimensions described in the 1868 record, nor did any of the rocks fit the characteristics of purposely set corner stones found at other corners throughout the county. The rocks were neither vertical nor set in cardinal directions and were found in the fill material of the road rather than embedded in the clay layer below the road. The record stone was not found in an area of excavation extending 5 feet N, 3 feet S, 5-1/2 feet W and 2-1/2 feet E of the rail. Excavation was performed to approximately 25 inches deep, slightly into the clay layer below the road bed.

The found railroad rail was held as marking the corner and was replaced with a harrison monument in the same position. The harrison monument shown on the 2005 tie card was not found.

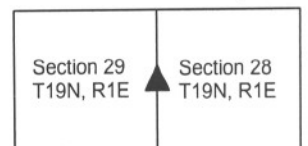
This corner was originally established as a wood post in June, 1820.



Kenneth E. Hedge
 Kenneth E. Hedge, County Surveyor

James S. Swift
 James S. Swift, IN LS 20200054
 January 15, 2013

Center Township



SECTION CORNER RECORD

BOONE COUNTY SURVEYOR'S OFFICE

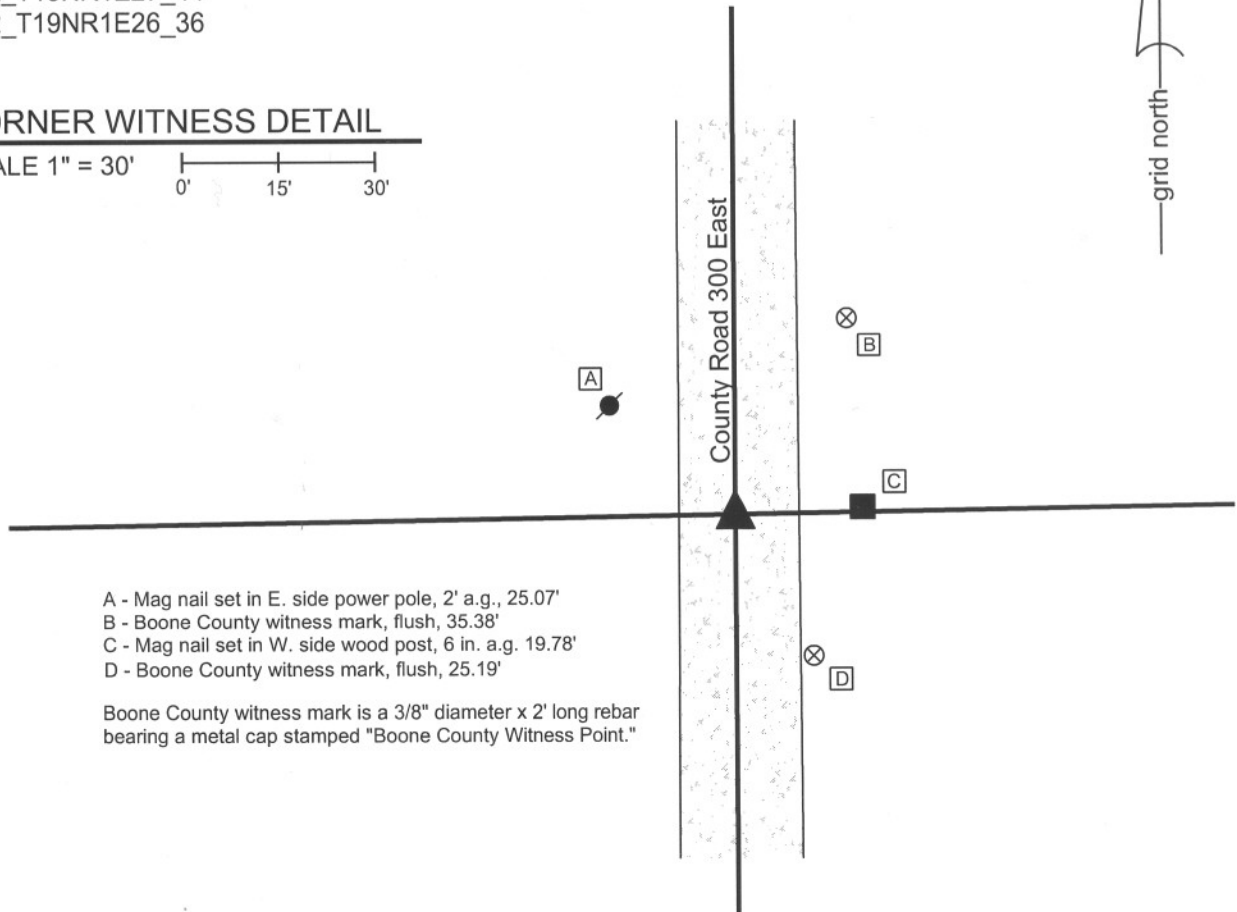
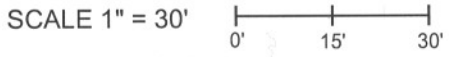
NE 150-300

State Plane grid coordinates NAD83 (NSRS 2007):
 North: 1753647.38 East: 3140444.20 (U.S. survey feet)

Type of monument: Harrison, 4" disk 'Section Corner'
 Depth: six inches below adjacent gravel road surface

Indiana tie card references:
 IN02_T19NR1E27_44
 IN02_T19NR1E26_36

CORNER WITNESS DETAIL

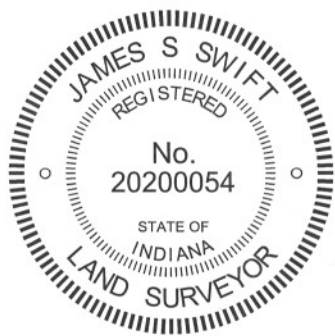


- A - Mag nail set in E. side power pole, 2' a.g., 25.07'
- B - Boone County witness mark, flush, 35.38'
- C - Mag nail set in W. side wood post, 6 in. a.g. 19.78'
- D - Boone County witness mark, flush, 25.19'

Boone County witness mark is a 3/8" diameter x 2' long rebar bearing a metal cap stamped "Boone County Witness Point."



The harrison monument was set in place of a vertical section of railroad rail found. A BCS record of April 28, 1884 states "Reestablished by continuing and doubling line 1,2 Sect. 27 and continuing and doubling line F, f Sect. 27 and measuring line C,E to the points as above all of which varied less than 1 link of same point. Rock Set 15x8x7 mark +." A BCS tie card dated May 29, 1967 states "small stone found." A BCS tie card dated July 22, 2005 shows the corner as a steel rail with no documentation of source. Prior to excavation a railroad rail was found approximately one inch below the adjacent gravel road surface. Excavation revealed no other evidence of the corner. It is known that it was a common practice for BCS crews in the late 1960s to remove a stone, when found, and replace it with a railroad rail. The documentation for such events typically states "stone found" with no mention of the removal of the stone or placement of the rail. It appears that the same procedure was followed for this corner. The position of the railroad rail was held as the corner. The rail was removed during excavation and was replaced with a harrison monument.
 This corner was originally established as a wood post in June, 1822.

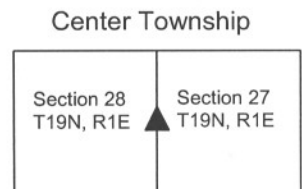


Kenneth E. Hedge

 Kenneth E. Hedge, County Surveyor

James S. Swift

 James S. Swift, IN LS 20200054
 March 1, 2012



SECTION CORNER RECORD

NE 200-200

BOONE COUNTY SURVEYOR'S OFFICE

State Plane grid coordinates NAD83 (CORS96):

North: 1756209.13 East: 3135148.89 (U.S. survey feet)

Type of monument: Harrison, 4" disk 'Section Corner'

Depth: One inch below adjacent road/drive surface

Indiana tie card references:

IN02_T19NR1E20_80 IN02_T19NR1E21_72

IN02_T19NR1E29_08 IN02_T19NR1E28_00

CORNER WITNESS DETAIL

SCALE 1" = 40'

- A - Boone County witness mark, flush, 29.75'
- B - Mag nail set in S.W. side power pole, 2' a.g., 40.36'
- C - Mag nail set in N. side power pole, 2' a.g., 105.10'

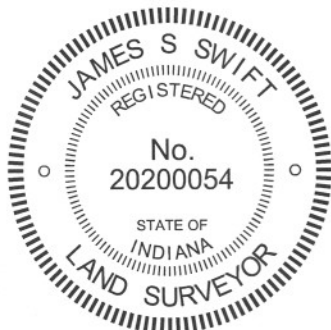
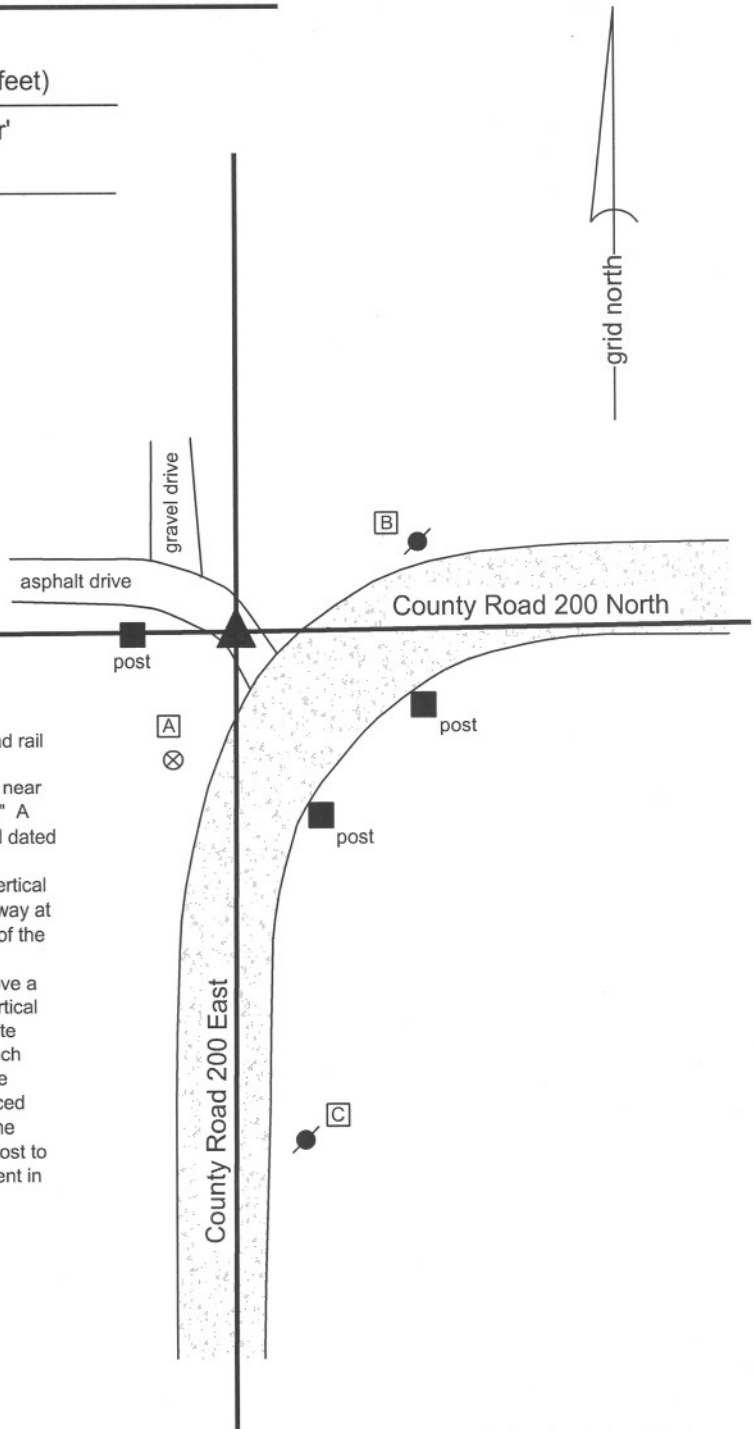
Boone County witness mark is a 3/8" diameter x 2' long rebar bearing a metal cap stamped "Boone County Witness Point."

The harrison monument was set in place of a vertical section of railroad rail found.

A BCS record dated October 29, 1868 states "Reestablished from the near Oak, the other down but here yet. Set Rock 13.12.5-1/2 in. marked +." A BCS tie card dated October 1975 states "Stone found. A BCS tie card dated July 27, 2005 shows the corner as a steel rail.

This corner was excavated on June 21, 2012. Prior to excavation a vertical section of railroad rail was found at 6 inches deep, in an asphalt driveway at a position which represents the extension of the approximate centers of the county road to the east and south. It is known that it was a common practice for BCS field crews in the late 1960s and early 1970s to remove a stone when found and replace it with a steel monument, typically a vertical section of railroad rail. The found section of steel rail is believed to date from the 1975 tie card, most likely in place of the found stone. A 15 inch diameter hole, centered on the rail, was excavated to 2 feet deep. The stone was not found and is believed to have been removed and replaced with the rail in 1975. The rail fits with local evidence of the corner in the form of the county roads to the east and south and an old wood end post to the west. The rail was removed and replaced with a harrison monument in the same position.

This corner was originally established as a wood post in June, 1822.



Kenneth E. Hedge
 Kenneth E. Hedge, County Surveyor

James S. Swift
 James S. Swift, IN LS 20200054
 January 15, 2013

Center Township

Section 20 T19N, R1E	Section 21 T19N, R1E
Section 29 T19N, R1E	Section 28 T19N, R1E

SECTION CORNER RECORD

NE 200-250

BOONE COUNTY SURVEYOR'S OFFICE

State Plane grid coordinates NAD83 (CORS96):
North: 1756247.98 East: 3137794.89 (U.S. survey feet)

Type of monument: Harrison, 4" disk 'Section Corner'
Depth: six inches below adjacent gravel road surface

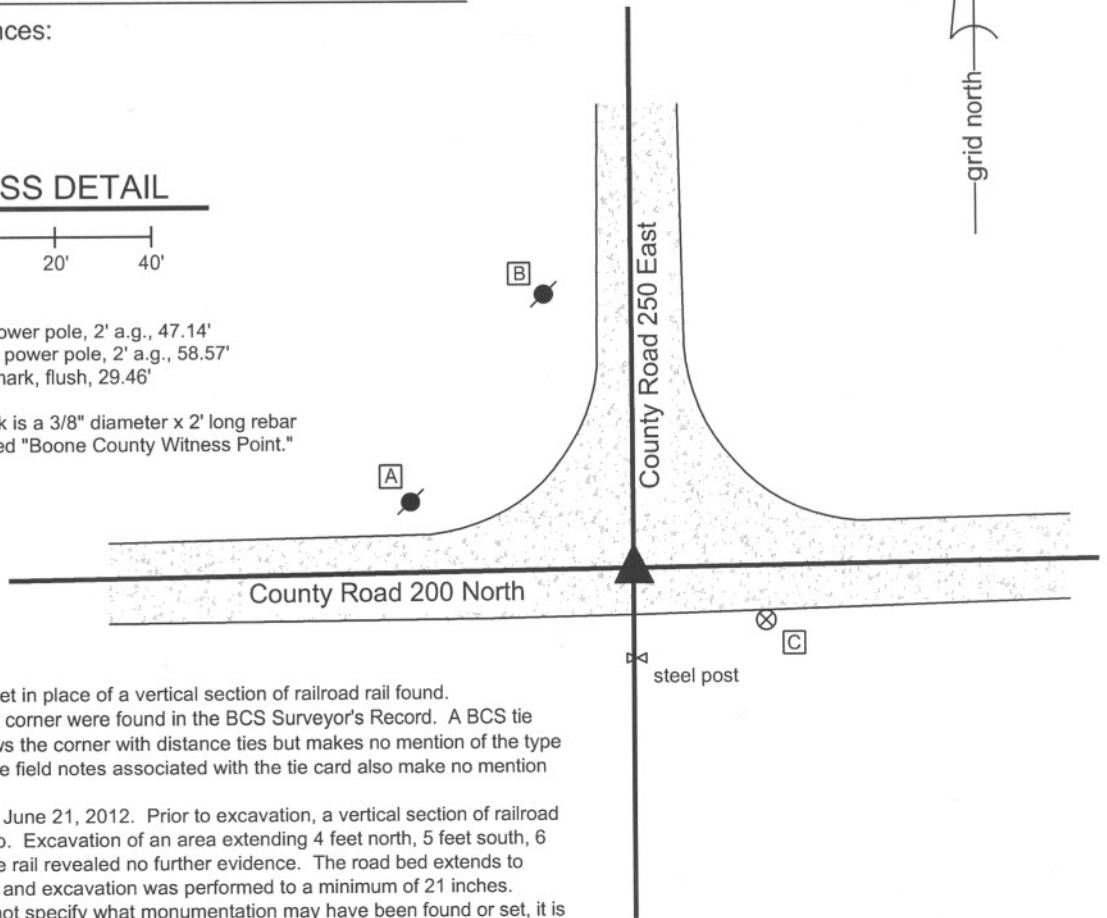
Indiana tie card references:
IN02_T19NR1E21_76
IN02_T19NR1E28_04

CORNER WITNESS DETAIL

SCALE 1" = 40'
0' 20' 40'

- A - Mag nail set in E. side power pole, 2' a.g., 47.14'
- B - Mag nail set in S.E. side power pole, 2' a.g., 58.57'
- C - Boone County witness mark, flush, 29.46'

Boone County witness mark is a 3/8" diameter x 2' long rebar bearing a metal cap stamped "Boone County Witness Point."

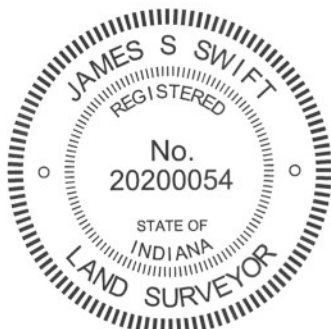


The Harrison monument was set in place of a vertical section of railroad rail found. No specific descriptions of this corner were found in the BCS Surveyor's Record. A BCS tie card dated May 12, 1967 shows the corner with distance ties but makes no mention of the type of monument found or set. The field notes associated with the tie card also make no mention of a monument.

This corner was excavated on June 21, 2012. Prior to excavation, a vertical section of railroad rail was found at 2 inches deep. Excavation of an area extending 4 feet north, 5 feet south, 6 feet east and 4 feet west of the rail revealed no further evidence. The road bed extends to approximately 18 inches deep and excavation was performed to a minimum of 21 inches. While the 1967 tie card does not specify what monumentation may have been found or set, it is most likely that the railroad rail was set in association with the creation of this document. If a stone was found at that time, it would have likely been removed and replaced with the rail, as was the common practice of BCS field crews at that time.

The rail fits with local evidence in the form of the approximate centers of the county roads to the north, east and west and the field division to the south. The rail was held as marking the corner. The rail was removed during excavation and replaced in the same position with a Harrison monument.

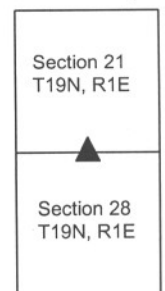
This corner was originally established as a wood post in June, 1821.



Kenneth E. Hedge
Kenneth E. Hedge, County Surveyor

James S. Swift
James S. Swift, IN LS 20200054
January 15, 2013

Center Twp



SECTION CORNER RECORD

BOONE COUNTY SURVEYOR'S OFFICE

NE 200-300

State Plane grid coordinates NAD83 (CORS96):
 North: 1756286.78 East: 3140437.82 (U.S. survey feet)

Type of monument: Harrison, 4" disk 'Section Corner'
 Depth: six inches below adjacent gravel road surface

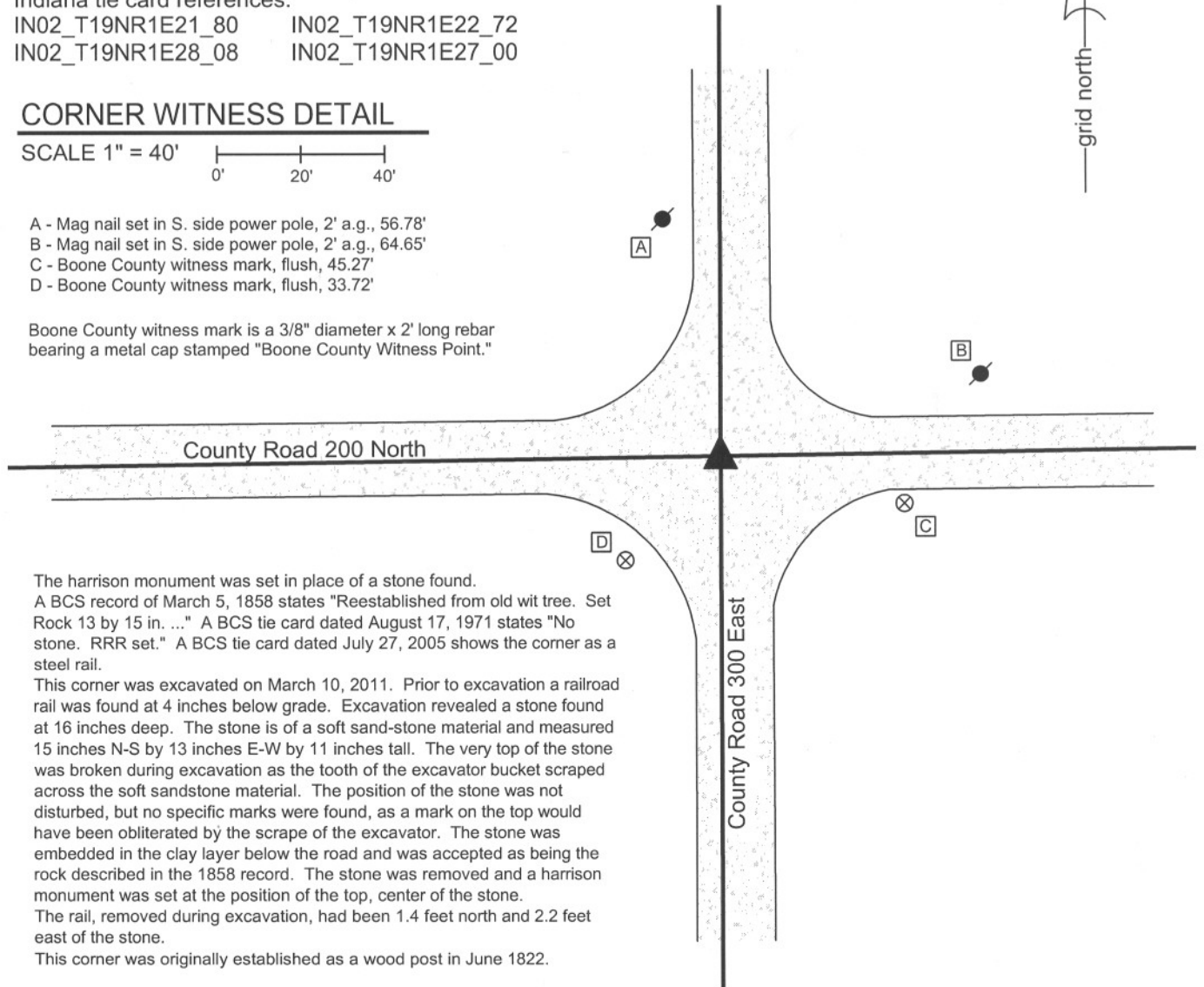
Indiana tie card references:
 IN02_T19NR1E21_80 IN02_T19NR1E22_72
 IN02_T19NR1E28_08 IN02_T19NR1E27_00

CORNER WITNESS DETAIL

SCALE 1" = 40'

- A - Mag nail set in S. side power pole, 2' a.g., 56.78'
- B - Mag nail set in S. side power pole, 2' a.g., 64.65'
- C - Boone County witness mark, flush, 45.27'
- D - Boone County witness mark, flush, 33.72'

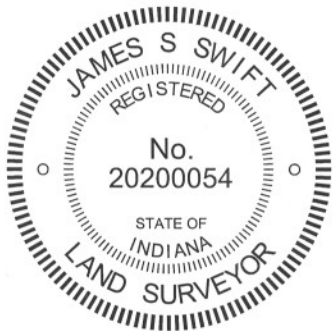
Boone County witness mark is a 3/8" diameter x 2' long rebar bearing a metal cap stamped "Boone County Witness Point."



The harrison monument was set in place of a stone found. A BCS record of March 5, 1858 states "Reestablished from old wit tree. Set Rock 13 by 15 in. ..." A BCS tie card dated August 17, 1971 states "No stone. RRR set." A BCS tie card dated July 27, 2005 shows the corner as a steel rail.

This corner was excavated on March 10, 2011. Prior to excavation a railroad rail was found at 4 inches below grade. Excavation revealed a stone found at 16 inches deep. The stone is of a soft sand-stone material and measured 15 inches N-S by 13 inches E-W by 11 inches tall. The very top of the stone was broken during excavation as the tooth of the excavator bucket scraped across the soft sandstone material. The position of the stone was not disturbed, but no specific marks were found, as a mark on the top would have been obliterated by the scrape of the excavator. The stone was embedded in the clay layer below the road and was accepted as being the rock described in the 1858 record. The stone was removed and a harrison monument was set at the position of the top, center of the stone. The rail, removed during excavation, had been 1.4 feet north and 2.2 feet east of the stone.

This corner was originally established as a wood post in June 1822.



Kenneth E. Hedge
 Kenneth E. Hedge, County Surveyor

James S. Swift
 James S. Swift, IN LS 20200054
 March 1, 2012

Center Township

Section 21 T19N, R1E	Section 22 T19N, R1E
Section 28 T19N, R1E	Section 27 T19N, R1E

PHOTOGRAPHIC DOCUMENTATION

Date of photography: March 10, 2011

View of the stone from the north, looking south along County Road 300 East.



For details and documentation, refer to related sheet "Section Corner Record."