

# SECTION CORNER RECORD

SE 400-800

## BOONE COUNTY SURVEYOR'S OFFICE

State Plane grid coordinates NAD83 (NSRS 2007):

North: 1725475.91 East: 3167346.25 (U.S. survey feet)

Type of monument: Harrison, 4" disk 'Section Corner'

Depth: One inch below road surface

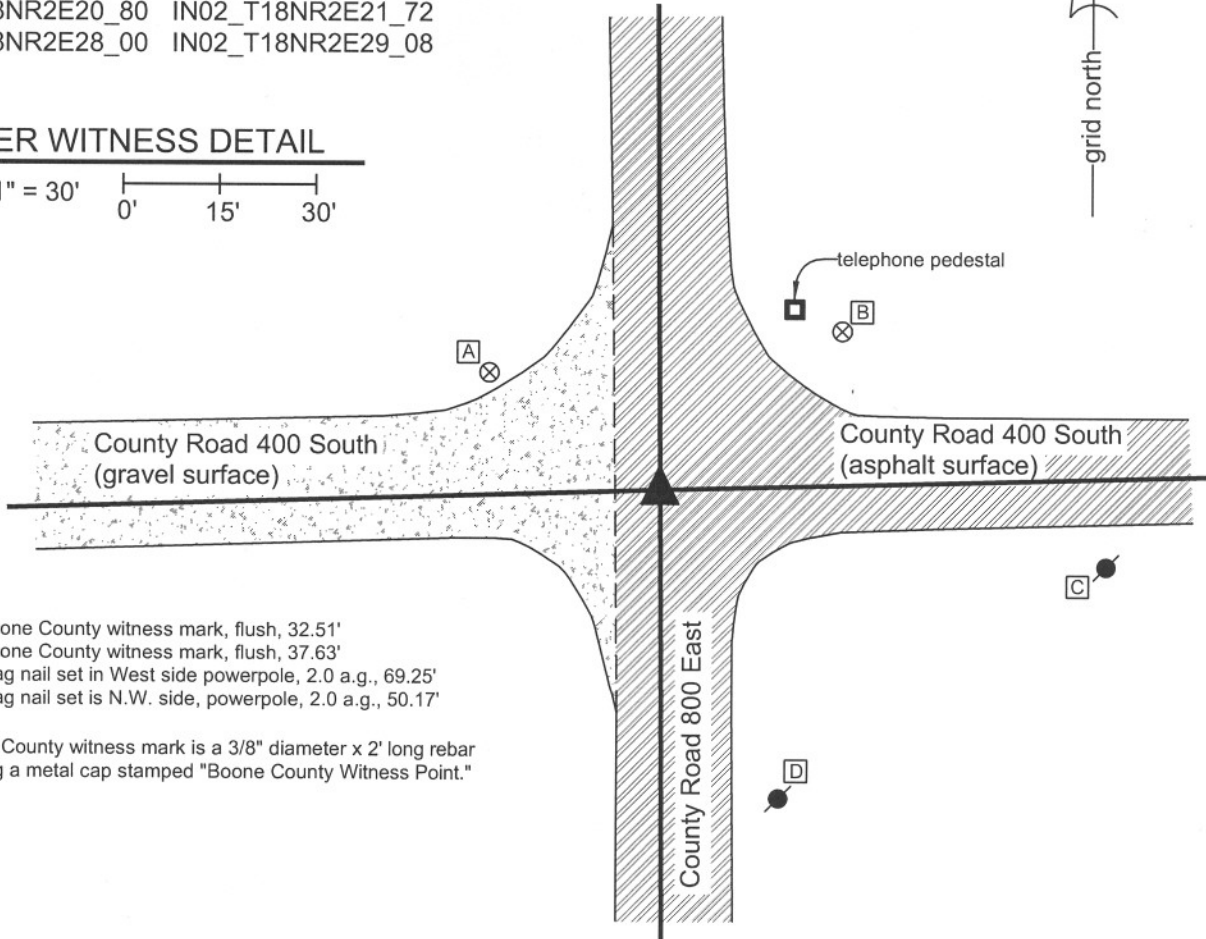
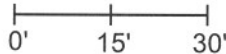
Indiana tie card references:

IN02\_T18NR2E20\_80 IN02\_T18NR2E21\_72

IN02\_T18NR2E28\_00 IN02\_T18NR2E29\_08

### CORNER WITNESS DETAIL

SCALE 1" = 30'



- A - Boone County witness mark, flush, 32.51'
- B - Boone County witness mark, flush, 37.63'
- C - Mag nail set in West side powerpole, 2.0 a.g., 69.25'
- D - Mag nail set is N.W. side, powerpole, 2.0 a.g., 50.17'

Boone County witness mark is a 3/8" diameter x 2' long rebar bearing a metal cap stamped "Boone County Witness Point."

The Harrison monument was set directly over the top of a stone found and accepted as marking the corner. The stone was exposed and the Harrison monument set on November 13, 2007. The stone matches the description from a BCS record of November 23 - 25, 1865: "Re-established from trees and old stake. Set rock 24.14 by 4 marked + on W. side and four small rocks around it." The top of the stone is 27 inches deep, firmly established in the clay sub-base and the "+" on the west side is clearly visible. A smaller stone was found at 12 inches deep, directly above the record stone. The smaller stone was within the gravel layer of the road and appears to have been set as a witness to the deeper, record stone. A railroad rail set on end was found 1.7' North and 1.8' East of the stone. A BCS tie card dated April 15, 1968 states "no stone found" and demonstrates a location for the corner but does not state what monument was set. It is likely that the railroad rail was set at this time. The rail has been held as the corner for surveys subsequent to 1968 but is clearly not the best evidence of the location of the original corner. The rail and the small witness stone were removed during excavation and the record stone was left in place. This corner was originally established in July, 1821.



*Kenneth E. Hedge*  
Kenneth E. Hedge, County Surveyor

*J. S. Swift*  
James S. Swift, IN LS 20200054  
January 2, 2008

Worth Township	Eagle Township
Section 20 T18N, R2E	Section 21 T18N, R2E
Section 29 T18N, R2E	Section 28 T18N, R2E

PHOTOGRAPHIC DOCUMENTATION

Date of photography: 11/13/2007

Photograph of record stone, set 11/23-11/25, 1865. Photo is taken from above, slightly to West.



Close-up of record stone, taken from above, showing west side of the top of the stone. The etched "+" is clearly visible on the west side, centered at 4 inches from top of stone. The stone was exposed to 9 inches below the top, at which point it was approximately 8 inches wide by 4 inches thick and completely stable in position. One of the "four small rocks around it" was found on the east side. The other surrounding rocks were not exposed. The stone was not further exposed in order to preserve the stability of its position.



Photograph taken from Northeast, showing area of excavation as it is being re-filled with gravel. The main hole is 4 feet by 4 feet centered on the railroad rail (see notes, other sheet). Record stone was found in bottom of the offset square in the S.W. corner of the main hole. The small witness stone found above the record stone is shown along with several small rocks on pavement at the top right corner of the photograph.



Record stone at bottom of hole

# SECTION CORNER RECORD

SE 400-850

## BOONE COUNTY SURVEYOR'S OFFICE

State Plane grid coordinates NAD83 (NSRS 2007):  
North: 1725547.99 East: 3170033.61 (U.S. survey feet)

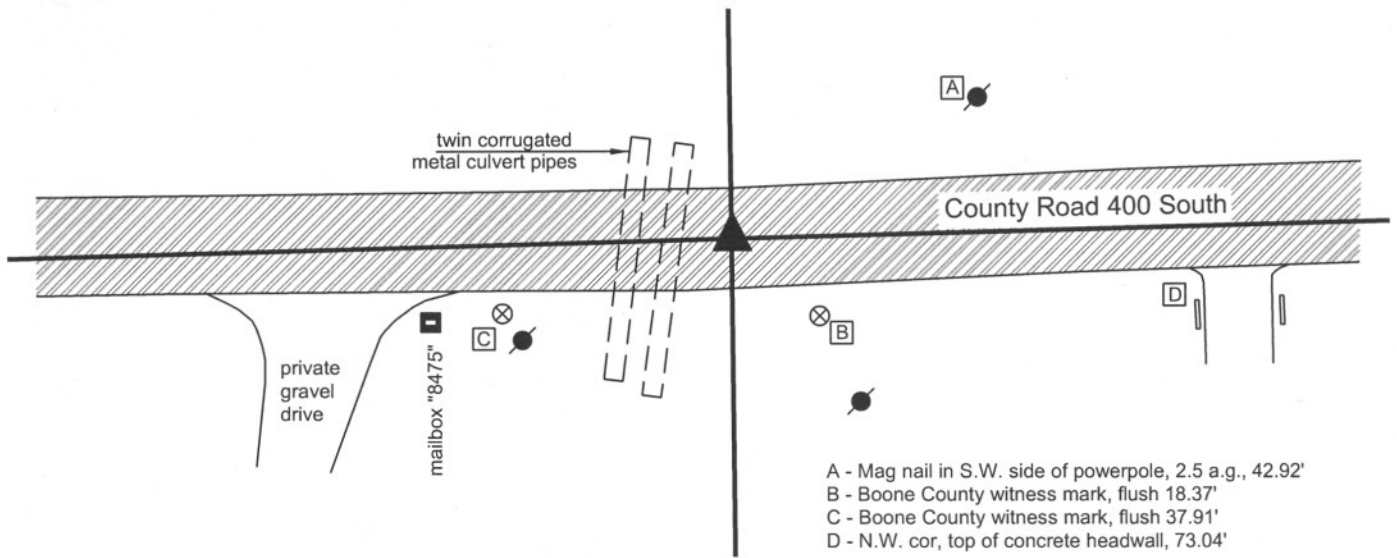
Type of monument: Harrison, 4" disk 'Section Corner'  
Depth: 0.1' below adjacent road surface

Indiana tie card references:  
IN02\_T18NR2E21\_76  
IN02\_T18NR2E28\_04



### CORNER WITNESS DETAIL

SCALE 1" = 30'  
0' 15' 30'



- A - Mag nail in S.W. side of powerpole, 2.5 a.g., 42.92'
- B - Boone County witness mark, flush 18.37'
- C - Boone County witness mark, flush 37.91'
- D - N.W. cor, top of concrete headwall, 73.04'

Boone County witness mark is a 3/8" diameter x 2' long rebar bearing a metal cap stamped "Boone County Witness Point."

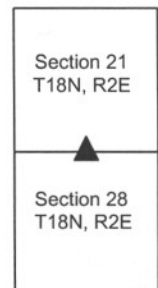
The Harrison monument was set over the chiseled "+" on the top of a stone found and accepted as marking the corner. The top of the stone is approximately 8 inches below the road surface and measures 6 inches by 6 inches. The stone is approximately 12 inches tall and is set vertically, with the bottom 9 inches fully embedded in the clay sub-base. The stone is located in the center of County Road 400 North. A railroad spike which was the visible monument prior to excavation was found 1.7' S and 0.1' E of the "+" on the stone, and was removed during excavation. The railroad spike has been held for recent private surveys. No previous BCS record was found for either the stone or the railroad spike. Due to the shallow depth of the stone, the Harrison monument was truncated at approximately 8 inches. This corner was originally established in July, 1821.



*Kenneth E. Hedge*  
Kenneth E. Hedge, County Surveyor

*James S. Swift*  
James S. Swift, IN LS 20200054  
January 30, 2008

Eagle Township





PHOTOGRAPHIC DOCUMENTATION

Date of photography: 11/29/2007

View of the stone from above, oriented with north towards the top of the page. The top of the stone is 8 inches below the surface of the road. The stone is 6 inches by 6 inches near the top and 12 inches tall, set vertically and well embedded in the clay sub-base of the road. The stone was left in place and a Harrison monument was truncated at 8 inches and set over the high point of the top of the stone.



Close-up view of the stone, brushed off at the top to show the vague + etched in the top. The + is enhanced in this photo for ease of visual detection.



View of the stone from the west, looking towards the east.



# SECTION CORNER RECORD

SE 400-900

## BOONE COUNTY SURVEYOR'S OFFICE

State Plane grid coordinates NAD83 (NSRS 2007):

North: 1725616.31 East: 3172723.18 (U.S. survey feet)

Type of monument: Harrison, 4" disk 'Section Corner'

Depth: One inch below adjacent road surface

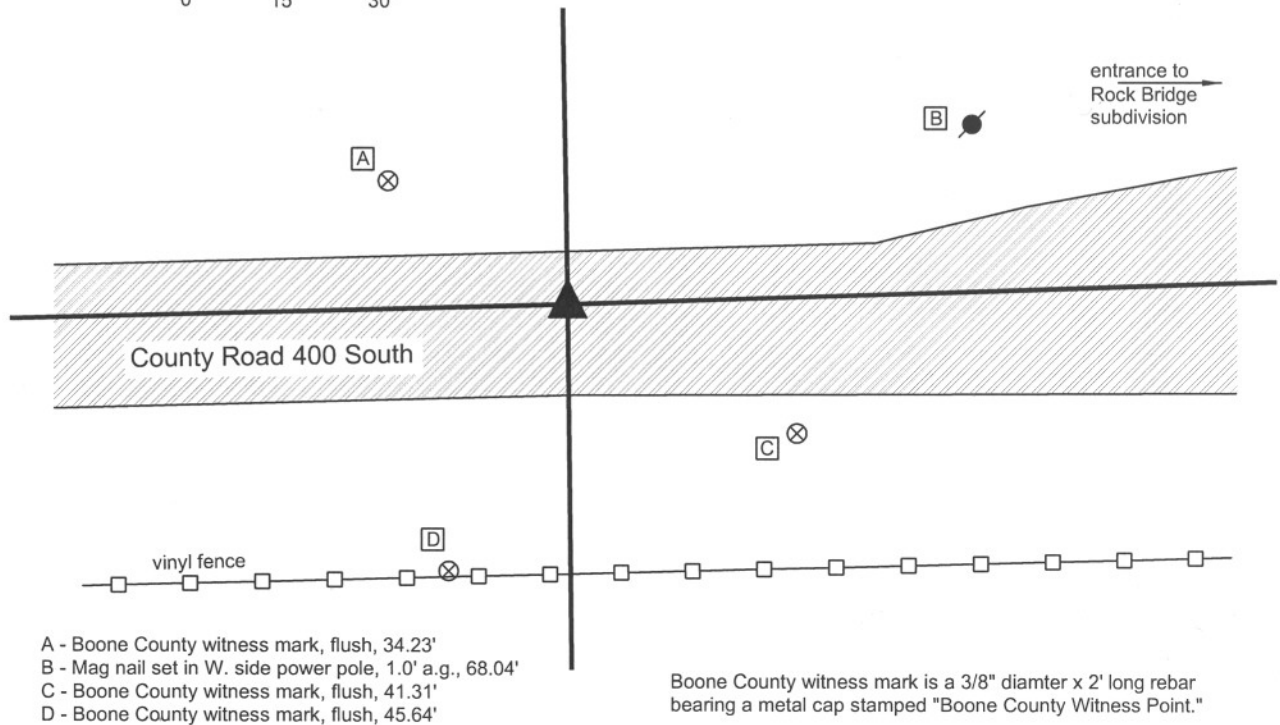
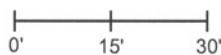
Indiana tie card references:

IN02\_T18NR2E21\_80 IN02\_T18NR2E22\_72

IN02\_T18NR2E28\_08 IN02\_T18NR2E27\_00

### CORNER WITNESS DETAIL

SCALE 1" = 30'



- A - Boone County witness mark, flush, 34.23'
- B - Mag nail set in W. side power pole, 1.0' a.g., 68.04'
- C - Boone County witness mark, flush, 41.31'
- D - Boone County witness mark, flush, 45.64'

Boone County witness mark is a 3/8" diamter x 2' long rebar bearing a metal cap stamped "Boone County Witness Point."

The harrison monument was set in the position of a railroad spike found 3 feet north of the approximate center of County Road 400 South and 6 inches below grade. The railroad spike is demonstrated on several surveys and has been held as the corner for the perimeter surveys of the adjacent subdivisions. No BCS records were found for this corner beyond the original establishment of the corner in July, 1821. An area 4 feet E-W by 7 feet N-S, centered on the railroad spike in the E-W dimension and extended 4 feet south and 3 feet north of the spike was excavated November 29, 2007. Excavation yielded a 5/8 inch rebar and 1/2 inch i.d. iron pipe seperated by approximately 3 inches E-W. The railroad spike was above these monuments and centered between them in the E-W dimension. No other monuments were found. The railroad spike, rebar and pipe were all removed during excavation and the harrison set in the position of the railroad spike. This corner was originally established as a wood post in July 1821.



*Kenneth E. Hedge*  
Kenneth E. Hedge, County Surveyor

*James S. Swift*  
James S. Swift, IN LS 20200054  
March 11, 2009

Eagle Township

Section 21 T18N, R2E	Section 22 T18N, R2E
Section 28 T18N, R2E	Section 27 T18N, R2E

# SECTION CORNER RECORD

SE 450-800

## BOONE COUNTY SURVEYOR'S OFFICE

State Plane grid coordinates NAD83 (NSRS 2007):

North: 1722829.92 East: 3167363.72 (U.S. survey feet)

Type of monument: Harrison, 4" disk 'Section Corner'

Depth: 0.1' below adjacent road surface

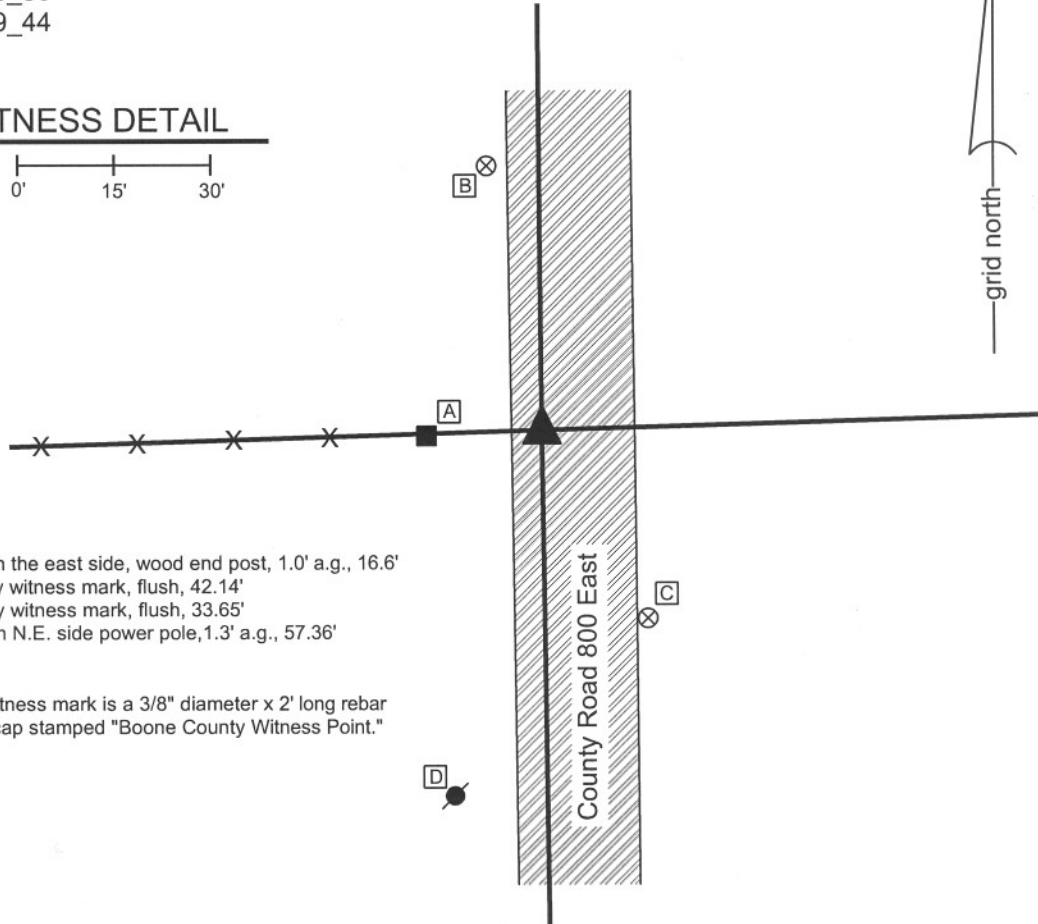
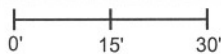
Indiana tie card references:

IN02\_T18NR2E28\_36

IN02\_T18NR2E29\_44

### CORNER WITNESS DETAIL

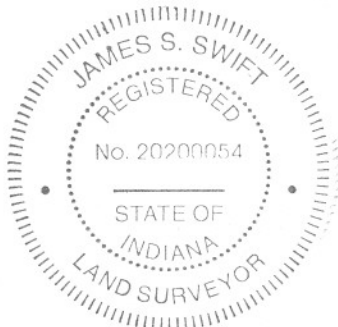
SCALE 1" = 30'



- A - Mag nail set in the east side, wood end post, 1.0' a.g., 16.6'
- B - Boone County witness mark, flush, 42.14'
- C - Boone County witness mark, flush, 33.65'
- D - Mag nail set in N.E. side power pole, 1.3' a.g., 57.36'

Boone County witness mark is a 3/8" diameter x 2' long rebar bearing a metal cap stamped "Boone County Witness Point."

The Harrison monument was set in place of a stone found and accepted as marking the corner. The stone was excavated and the Harrison monument set on November 14, 2007. The stone matches the description from a BCS record of November 23-25, 1865: "Re-established from one tree. Set Rock 18.12 by 7 marked + on West side." Minimal gravel and chip-and-seal asphalt cover the clay subbase of the road in this vicinity. The base of the stone was clearly in the clay sub-base, but with such minimal road surface, the stone was shallow and had been pushed over, with the top broken off. The two pieces of the broken stone combine to match the record dimensions and the "+" is clearly visible. Upon initial discovery the "+" was facing partially down into the clay due to the previous disturbance of the stone, though it was apparent that the "+" had been on the west side when the stone was upright. The stone was removed and the Harrison monument was set in the position where the base of the stone was embedded in the clay sub-base. A 5/8 inch rebar which has been held for previous private surveys in the vicinity, but for which no previous BCS record exists, was found 3.63 feet east and 0.44 feet south of the corner. The rebar was removed during excavation. This corner was originally established in July, 1821.



*Kenneth E. Hedge*  
 Kenneth E. Hedge, County Surveyor

*J. S. Swift*  
 James S. Swift, IN LS 20200054  
 January 2, 2008

Worth Township	Eagle Township
Section 29 T18N, R2E	Section 28 T18N, R2E



PHOTOGRAPHIC DOCUMENTATION

Date of photography: 11/14/2007

Photograph of the record stone, set 11/23-11/25, 1865, as it was originally exposed. Photo is taken from the south.



Photograph of the record stone, lifted to show etched "+" on west side. Photo is taken from the west. The stone had apparently been hit, the top broken off, and pushed over onto the west side. The dimensions of the stone match the record description. The stone was removed and the Harrison set over the position where the bottom of the stone was embedded in clay. The broken-off portion of the top is not shown in this photograph. The stone is on display in the Boone County Surveyor's Office.



# SECTION CORNER RECORD

# SE 450-900

## BOONE COUNTY SURVEYOR'S OFFICE

State Plane grid coordinates NAD83 (NSRS 2007):

North: 1722979.46 East: 3172756.84 (U.S. survey feet)

Type of monument: Harrison, 4" disk 'Section Corner'

Depth: Approximately 1 inch deep, below the grass.

Indiana tie card references:

IN02\_T18NR2E27\_36

IN02\_T18NR2E28\_44

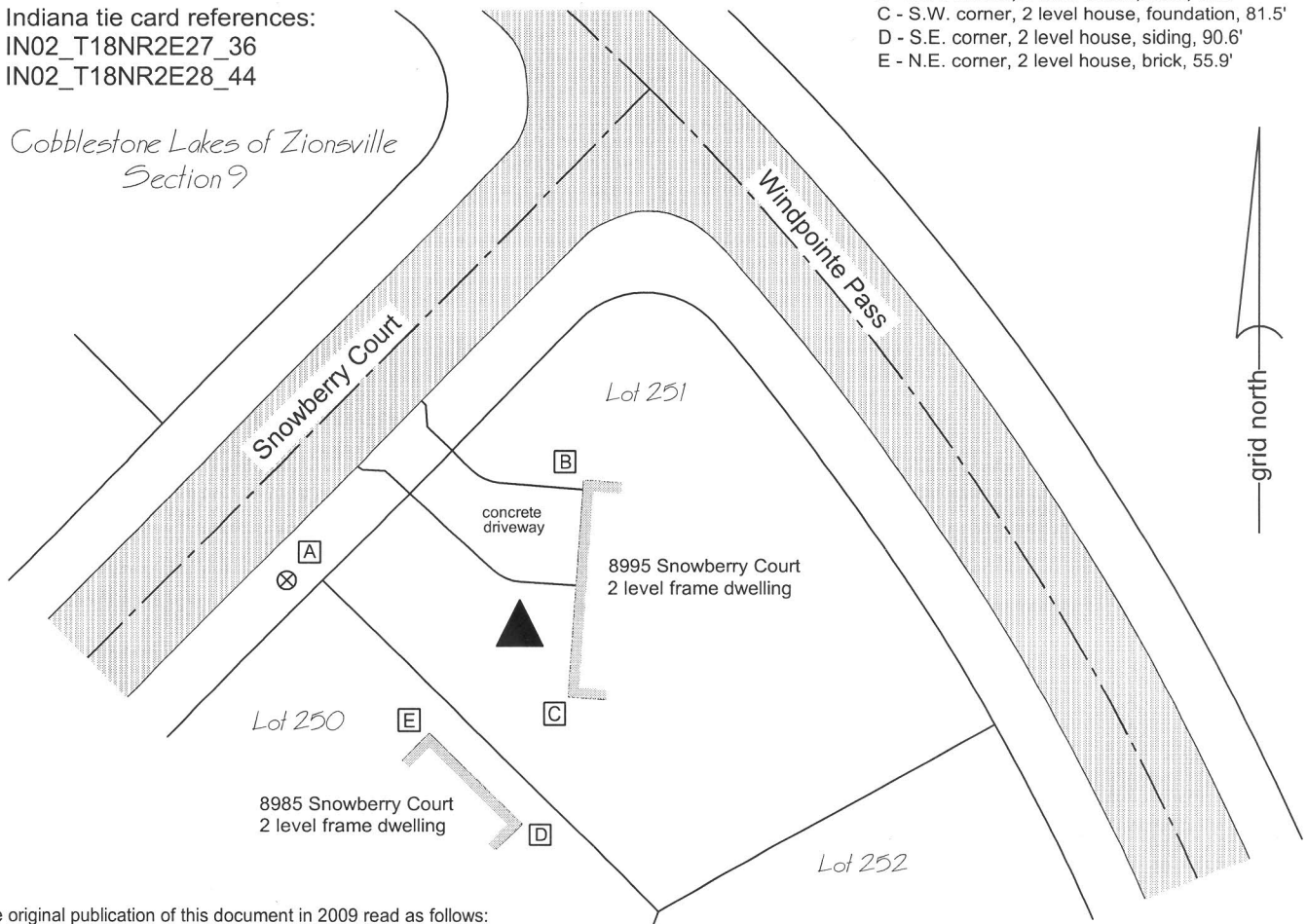
*Cobblestone Lakes of Zionsville  
Section 9*

### CORNER WITNESS DETAIL

SCALE 1" = 50'



- A - Boone County Witness Point, flush, 63.6'
- B - N.W. corner, 2 level house, brick, 43.9'
- C - S.W. corner, 2 level house, foundation, 81.5'
- D - S.E. corner, 2 level house, siding, 90.6'
- E - N.E. corner, 2 level house, brick, 55.9'

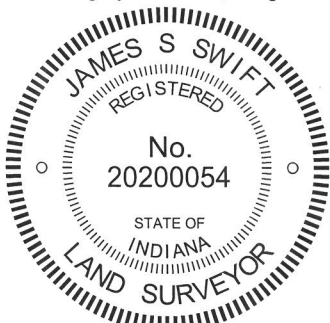


The original publication of this document in 2009 read as follows:

"The harrison monument was set in place of a rebar found.

A BCS record of March 22, 1910 states "Found rock for corner already established." No BCS tie cards were found for this corner. A 5/8 inch rebar has been held as the corner for various private surveys, including the ALTA surveys prepared in advance of the development of Cobblestone Lakes Subdivision (see Survey Book 6, pages 63-64 among others). The rebar was present and undisturbed in the summer of 2007, located at the intersection of mature tree lines to the east and south. The rebar was located at that time but the corner was not excavated. Construction on this section of Cobblestone Lakes began soon thereafter. The tree lines were removed and the top soil was stripped. In October, 2008 the rebar was found bent over but still firmly in the ground and at the previous position. Minor excavation took place in the vicinity of the rebar and no stones were found which appeared to be corner stones. The rebar was removed and the harrison monument was set in the place of the lower section of the rebar which did not appear to have been disturbed during the previous grading work. As of the date of certification, construction has not commenced on any homes in the neighborhood. This corner was originally established as a wood post in July, 1821."

A new home was constructed on this site in 2012-2013. Site work associated with that construction buried, but did not disturb, the harrison monument. The monument was uncovered on April 2, 2013 and confirmed to be in the original location. The monument was left in place and another harrison monument was set above it. At the time this monument was set final grading had not been completed. Subsequent final grading and placement of sod was performed and the harrison monument is situated slightly below flush, being at the depth of the bottom of the sod layer.

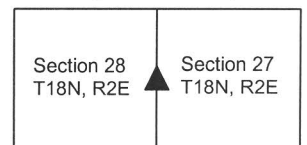


*Kenneth E. Hedge*  
 Kenneth E. Hedge, County Surveyor

*James S. Swift*  
 James S. Swift, IN LS 20200054

March 11, 2009 Revised February 5, 2015

Eagle Township





# SECTION CORNER RECORD

SE 500-800

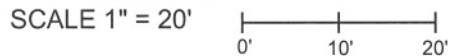
## BOONE COUNTY SURVEYOR'S OFFICE

State Plane grid coordinates NAD83 (NSRS 2007):  
 North: 1720188.49 East: 3167398.38 (U.S. survey feet)

Type of monument: Harrison, 4" disk 'Section Corner'  
 Depth: 0.1' below adjacent road surface

Indiana tie card references:  
 IN02\_T18NR2E28\_72      IN02\_T18NR2E29\_80  
 IN02\_T18NR2E32\_08      IN02\_T18NR2E33\_00

### CORNER WITNESS DETAIL

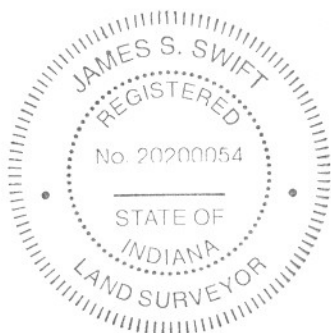
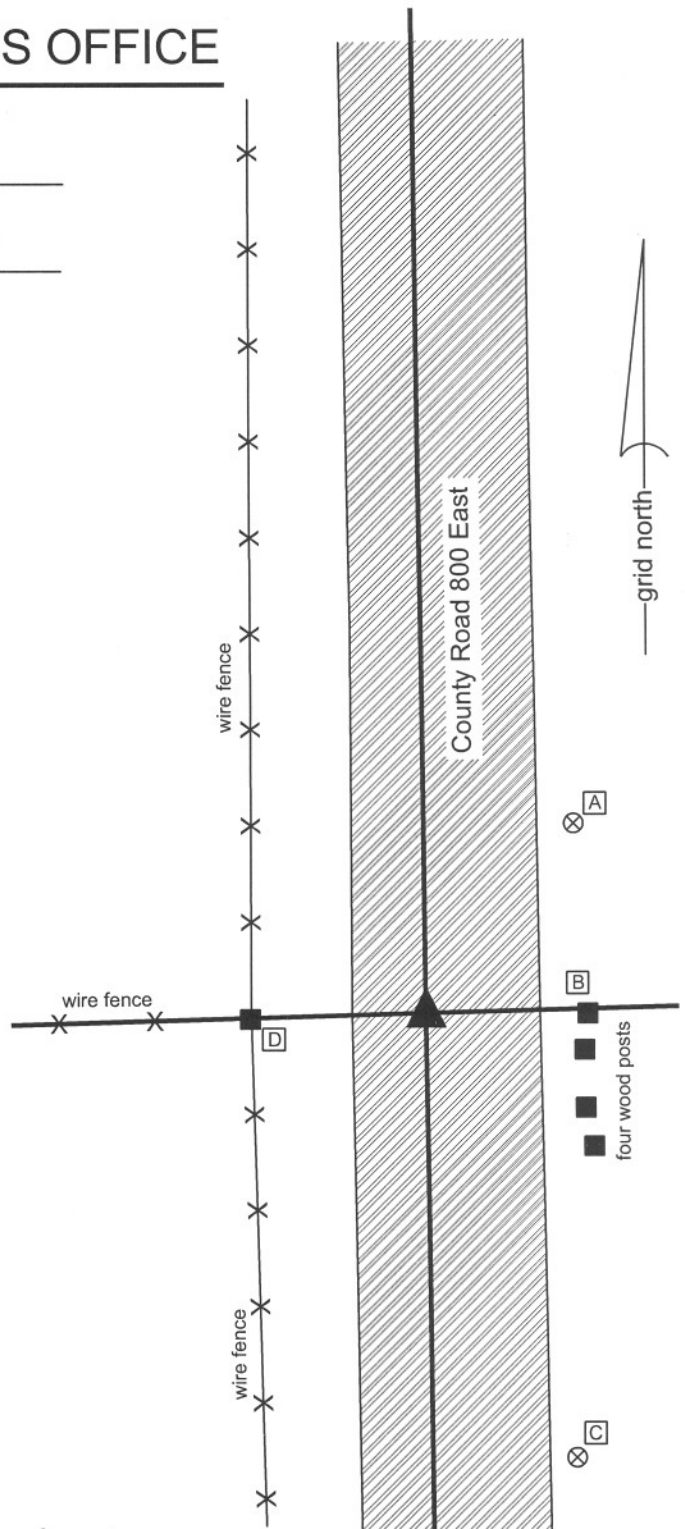


- A - Boone County witness mark, flush, 25.02'
- B - Mag nail found in N. side post, 0.5' a.g., 17.00'
- C - Boone County witness mark, flush 48.85'
- D - Mag nail found in S.E. side post, 1.3' a.g., 18.09'

Boone County witness mark is a 3/8" diameter x 2' long rebar bearing a metal cap stamped "Boone County Witness Point."

The Harrison monument was set in place of a stone found and accepted as marking the corner. The stone was slightly west of the center of the physical roadway of County Road 800 East, though close to the midpoint between the end posts on each side of the road. The position of the stone also fits well, in the east-west dimension, with the extended physical center of the roadway to the south and is at the easterly prlongation of an old fence to the west. The stone is 11 inches by 6 inches at its widest point and 12 inches tall. The stone was found to be standing vertically, fully lodged in the clay sub-base of the road, with the top of the stone at 5 inches below the existing surface of the road. No previous record of this stone is on file with this office.

A previous BCS tie card, undated though likely from 1968, states "no stone found." A piece of railroad rail found 1.8' E and 0.3' N of the top center of the stone was likely set as part of the field work associated with the creation of that tie card. The rail is closer to the physical center of the roadway than the stone, but does not fit as well with other evidence, including the extended physical roadway or the posts on each side. The stone is considered to be better evidence of the location of the original corner than the rail. The rail may represent a previous interpretation of the corner by the Office of the County Surveyor, though it is not specifically documented as such, and has been held by previous surveys as marking the corner. The 1967 tie card is considered erroneous, given the fact that the exclusive documentation on the tie card states "no stone found" while clearly a stone was present. It is noted that this corner is on the slope of a short, steep hill, through which the road drifts slightly to the east of the longer roadway. It is believed that the 1967 crew probably looked exclusively in the physical center of the roadway at the easterly prolongation of the old fence and did not search beyond that specific point. The rail was removed during excavation. Due to its shallow depth, the stone was also removed and the Harrison monument was set in place of the stone.



*Kenneth E. Hedge*  
 Kenneth E. Hedge, County Surveyor

*J. S. Swift*  
 James S. Swift, IN LS 20200054  
 January 30, 2008

Eagle & Worth Townships

Section 29 T18N, R2E (Worth)	Section 28 T18N, R2E (Eagle)
Section 32 T18N, R2E (Eagle)	Section 33 T18N, R2E (Eagle)

PHOTOGRAPHIC DOCUMENTATION

Date of photography: 11/14/2007

View from east, looking west. The stone is exposed to bottom. Most of the stone was embedded in the clay sub-base layer below the gravel road. Main square hole is 4 feet by 4 feet centered on the railroad rail. Stone found at west edge of main hole. Note wood end post to west.



View from above and south of stone as exposed. The top of the stone is 5 inches below the surface of the road.



View from above and slightly south of west. Clay sub-base has been excavated from around the stone almost to the bottom of the stone.



View from above and west. Hole and indention in the clay sub-base after the stone was removed. Harrison monument was set in the position of the midpoint of the top of the stone.



# SECTION CORNER RECORD

SE 500-850

## BOONE COUNTY SURVEYOR'S OFFICE

State Plane grid coordinates NAD83 (NSRS 2007):

North: 1720260.05 East: 3170090.69 (U.S. survey feet)

Type of monument: 5/8 inch rebar metal cap stamped "Boone County Surveyor"

Depth: 16 inches below adjoining ground (below plow depth)

Indiana tie card references:

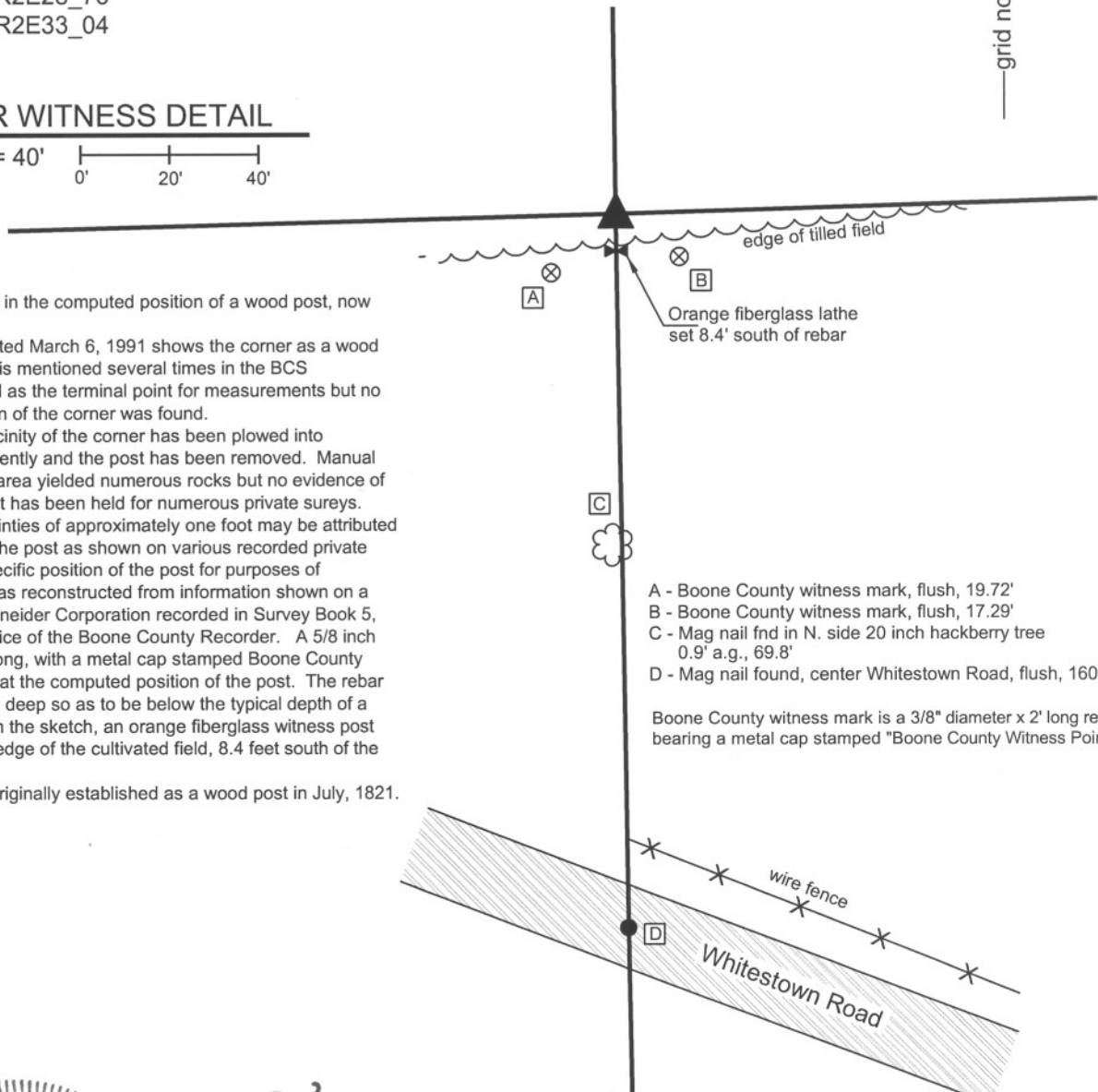
IN02\_T18NR2E28\_76

IN02\_T18NR2E33\_04



### CORNER WITNESS DETAIL

SCALE 1" = 40'



The rebar was set in the computed position of a wood post, now removed.

A BCS tie card dated March 6, 1991 shows the corner as a wood post. This corner is mentioned several times in the BCS Surveyor's Record as the terminal point for measurements but no specific description of the corner was found.

This immediate vicinity of the corner has been plowed into cultivated field recently and the post has been removed. Manual excavation in the area yielded numerous rocks but no evidence of the post. The post has been held for numerous private sureys. Positional uncertainties of approximately one foot may be attributed to the location of the post as shown on various recorded private surveys. The specific position of the post for purposes of monumentation was reconstructed from information shown on a survey by the Schneider Corporation recorded in Survey Book 5, page 70 in the Office of the Boone County Recorder. A 5/8 inch rebar, 36 inches long, with a metal cap stamped Boone County Surveyor was set at the computed position of the post. The rebar was set 16 inches deep so as to be below the typical depth of a plow. As noted on the sketch, an orange fiberglass witness post was set near the edge of the cultivated field, 8.4 feet south of the rebar.

This corner was originally established as a wood post in July, 1821.

- A - Boone County witness mark, flush, 19.72'
- B - Boone County witness mark, flush, 17.29'
- C - Mag nail fnd in N. side 20 inch hackberry tree 0.9' a.g., 69.8'
- D - Mag nail found, center Whitestown Road, flush, 160.95'

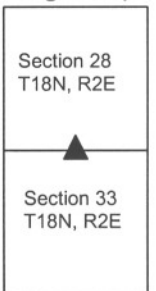
Boone County witness mark is a 3/8" diameter x 2' long rebar bearing a metal cap stamped "Boone County Witness Point."



*Kenneth E. Hedge*  
Kenneth E. Hedge, County Surveyor

*James S. Swift*  
James S. Swift, IN LS 20200054  
July 14, 2010

Eagle Twp





# SECTION CORNER RECORD

SE 500-900

## BOONE COUNTY SURVEYOR'S OFFICE

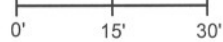
State Plane grid coordinates NAD83 (NSRS 2007):

North: 1720340.78 East: 3172780.70 (U.S. survey feet)

Type of monument: Harrison, 4" disk 'Section Corner'

Depth: flush with adjoining grade

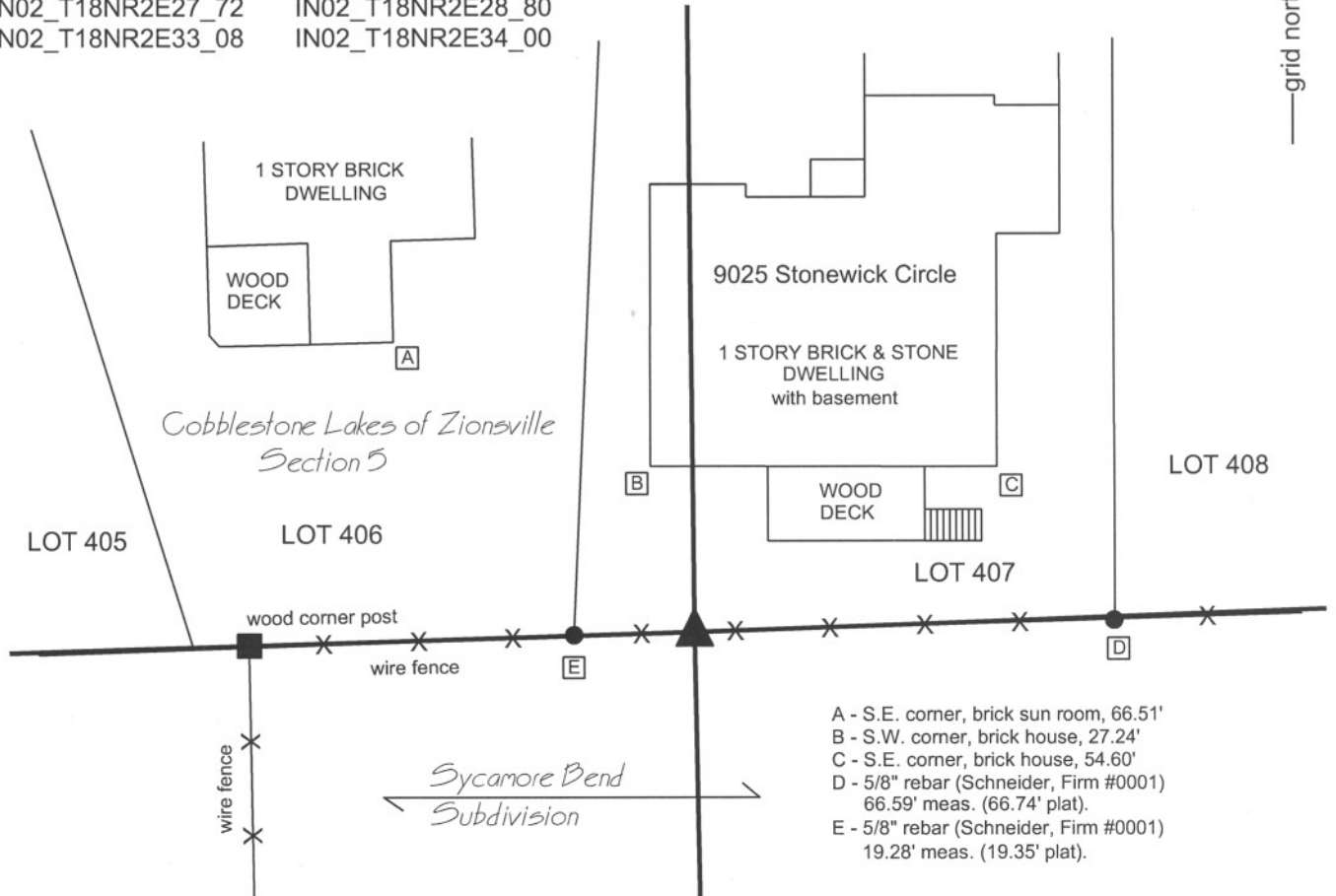
### CORNER WITNESS DETAIL

SCALE 1" = 30' 

Indiana tie card references:

IN02\_T18NR2E27\_72 IN02\_T18NR2E28\_80

IN02\_T18NR2E33\_08 IN02\_T18NR2E34\_00



The harrison monument was set in place of a 5/8 inch rebar found.

No entries were found for this corner in the BCS stone record. A BCS tie card dated March 6, 1991 is ambiguous about the specific corner, but shows ties to a 5/8 inch rebar. This corner was excavated on September 19 and 23, 2008. Prior to excavation, an old wood post was visible with a 5/8 inch rebar 0.5 foot south. The old E-W fence was not attached to the post and the rebar was in the fence. Excavation revealed a column of rocks ranging from 4 inches by 4 inches to 12 inches by 12 inches approximately 1.5 feet east of the post. The rocks were removed and inspected. None contained specific markings and there was no evidence that these rocks had been purposely set as corner stones. Private surveys which have tied to this corner have held the rebar. The rebar is clearly shown as the corner on the plat of Cobblestone Lakes, Section 5, adjoining this corner to the north. The preponderance of evidence favors the rebar as the corner and it was held as such. The rebar was removed. The post was also removed except for the bottom portion, being from 2 feet deep to 4 feet deep. The harrison was set in concrete in the position of the rebar. This corner was originally established as a wood post in July, 1821.



*Kenneth E. Hedge*  
Kenneth E. Hedge, County Surveyor

*James S. Swift*  
James S. Swift, IN LS 20200054

March 11, 2009

Eagle Township

Section 28 T18N, R2E	Section 27 T18N, R2E
Section 33 T18N, R2E	Section 34 T18N, R2E