

SECTION CORNER RECORD

SE 400-200

BOONE COUNTY SURVEYOR'S OFFICE

State Plane grid coordinates NAD83 (NSRS 2007):

North: 1724680.57 East: 3135311.64 (U.S. survey feet)

Type of monument: Harrison, 4" disk 'Section Corner'

Depth: One inch below adjacent road surface

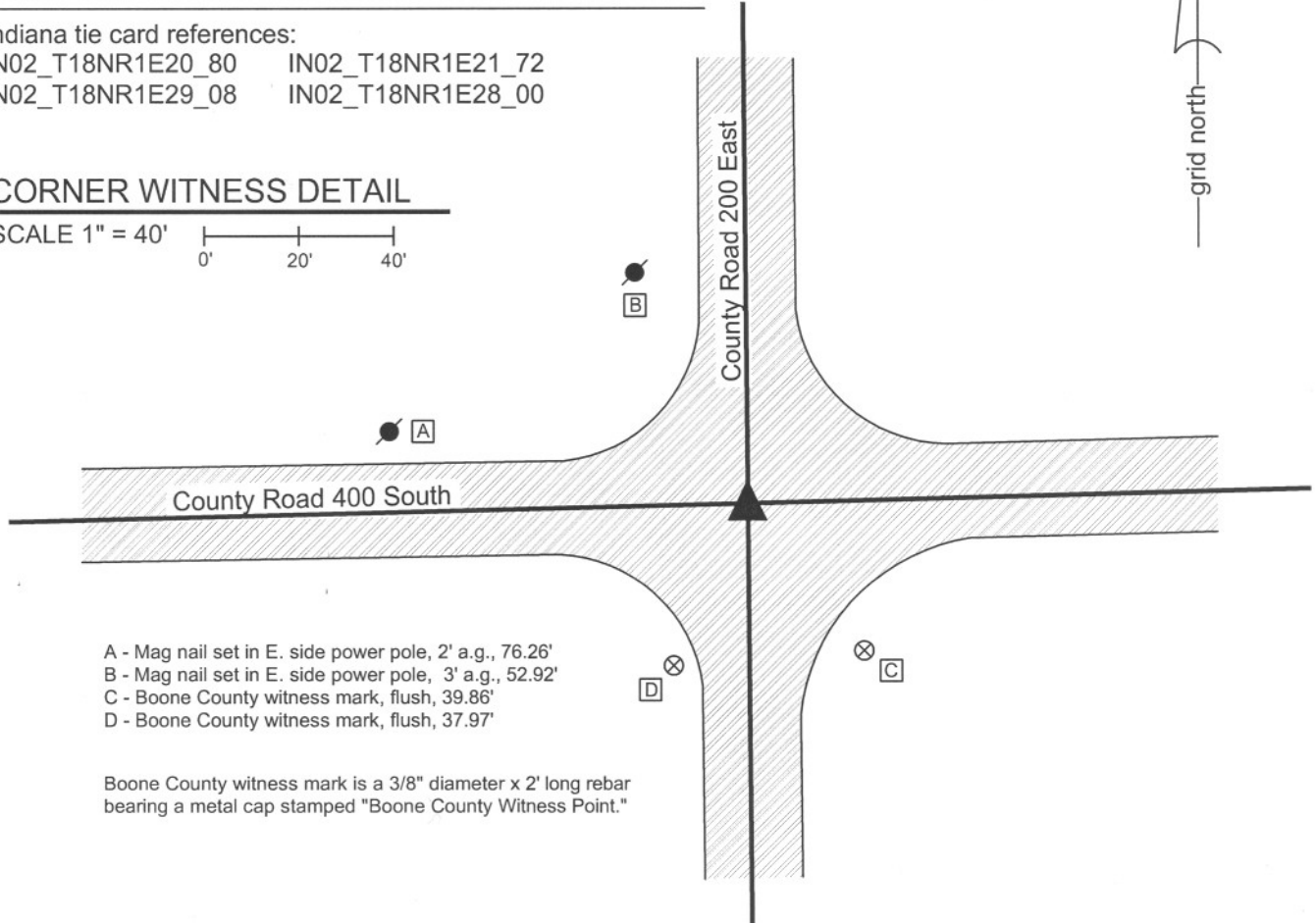
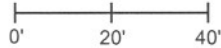
Indiana tie card references:

IN02_T18NR1E20_80 IN02_T18NR1E21_72

IN02_T18NR1E29_08 IN02_T18NR1E28_00

CORNER WITNESS DETAIL

SCALE 1" = 40'



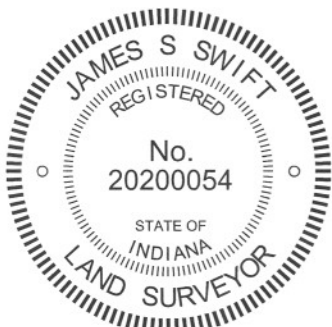
- A - Mag nail set in E. side power pole, 2' a.g., 76.26'
- B - Mag nail set in E. side power pole, 3' a.g., 52.92'
- C - Boone County witness mark, flush, 39.86'
- D - Boone County witness mark, flush, 37.97'

Boone County witness mark is a 3/8" diameter x 2' long rebar bearing a metal cap stamped "Boone County Witness Point."

The harrison monument was set over a stone found.

A BCS record of October 13 & 21, 1869 states "Reestablished from Beech. Rock 19.12.9 +." A BCS tie card dated July 21, 1968 states "no stone." This corner was excavated on November 2, 2009. Prior to excavation a Mag Nail was visible at the surface. Excavation revealed a railroad spike found at 2 inches deep, below the nail. Further excavation revealed a section of railroad rail on end at 10 inches deep, below the railroad spike. The 1968 tie card does not mention the establishment of a monument, but it is believed most likely that the railroad rail was set at the same time the tie card was made proclaiming "no stone." Further excavation revealed two small stones found at 15 inches deep. The record stone was found below the two small stones, at 20 inches deep. The stone is fully embedded in the clay layer below the road, with the top of the stone at the top of the clay. With the top six inches of the stone exposed, the stone measures 12 inches N-S by 9 inches E-W. An etched "+" is clearly visible on the west side of the stone, approximately 3 inches down from the top. The harrison monument was set over the top of the stone, in line with the etched "+". The Mag nail, railroad spike and railroad rail, all removed during excavation, were all 2.0 feet north and 0.75 feet east of the stone.

This corner was originally established as a wood post in 1820.



Kenneth E. Hedge
Kenneth E. Hedge, County Surveyor

James S. Swift
James S. Swift, IN LS 20200054
July 25, 2011

Perry Township

Section 20 T18N, R1E	Section 21 T18N, R1E
Section 29 T18N, R1E	Section 28 T18N, R1E

PHOTOGRAPHIC DOCUMENTATION

Date of photography: December 14, 2009

View of the top two stones as first exposed.



View of the larger of the top two stones with the lower, record, stone visible below.



The stone described in the 1868 record from above and northwest.



The record stone from above and north. The two upper stones are visible on the pavement.



View of the top and west side of the record stone.



Same view as to the left, with the etched mark on the stone enhanced for ease of visual detection.



For details and documentation, refer to related sheet "Section Corner Record."

SECTION CORNER RECORD

SE 400-250

BOONE COUNTY SURVEYOR'S OFFICE

State Plane grid coordinates NAD83 (NSRS 2007):

North: 1724746.42 East: 3137978.38 (U.S. survey feet)

Type of monument: Harrison, 4" disk 'Section Corner'

Depth: One inch below adjacent road surface

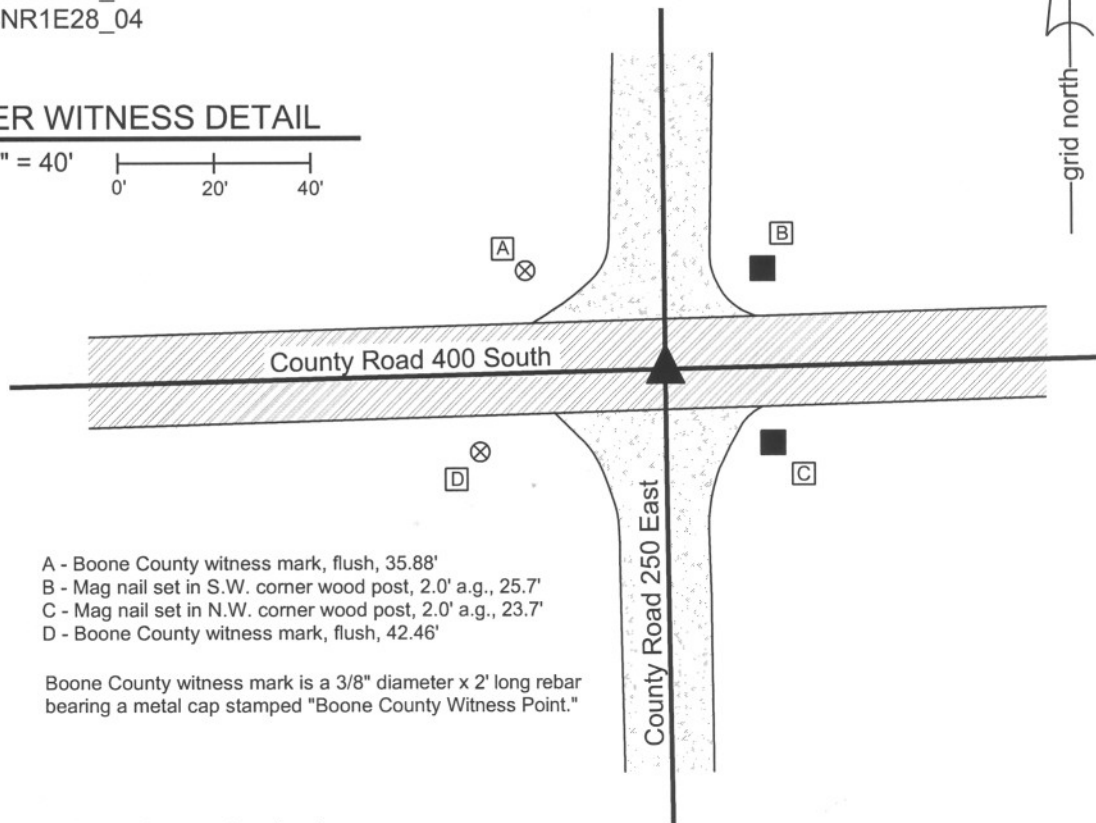
Indiana tie card references:

IN02_T18NR1E21_76

IN02_T18NR1E28_04

CORNER WITNESS DETAIL

SCALE 1" = 40'



- A - Boone County witness mark, flush, 35.88'
- B - Mag nail set in S.W. corner wood post, 2.0' a.g., 25.7'
- C - Mag nail set in N.W. corner wood post, 2.0' a.g., 23.7'
- D - Boone County witness mark, flush, 42.46'

Boone County witness mark is a 3/8" diameter x 2' long rebar bearing a metal cap stamped "Boone County Witness Point."

The Harrison monument was set over a stone found.

A BCS record of March 6, 1873 states "Reestablished from stump of Poplar and a stake. Set two Rocks One 14,10,9+ Top One 12,7,5+." No recent BCS tie cards were found referencing this corner. Excavation for this corner occurred on December 14, 2009. Prior to excavation a mag nail was visible in a hole in the asphalt 2 inches deep. No documentation was found for the source of this nail. The mag nail was removed and no other metal monuments were detected with a magnetic locator, nor were any ultimately found during excavation. A wood hub was found at 5 inches deep, approximately 4 inches north of the nail. Further excavation revealed a stone found at 17 inches below grade. The stone measured approximately 7 inches by 5 inches at the top and was 7 inches tall. The stone was situated in the base material of the road, was not embedded in the clay and did not match the record description in all dimensions. It was removed. Another stone was found directly below, at 24 inches deep. This stone measured 10 inches by 9 inches at the top and was also 7 inches tall. It was also removed. The record lower stone was found directly below this. This lower stone measures 9 inches E-W by 14 inches N-S at a point approximately 2 inches below the top of the stone. It is fully embedded in the clay layer below the road bed and a distinct etched "+" is visible on the top, center of the stone. The full height of the stone was not measured. This lower stone was left in place and the Harrison monument was set directly over the etched "+" on the top. The mag nail had been 0.25 foot south and 0.4 foot east of this position.

This corner was originally established as a wood post in June, 1820.



Kenneth E. Hedge
 Kenneth E. Hedge, County Surveyor

James S. Swift
 James S. Swift, IN LS 20200054

July 14, 2010

Perry Twp

Section 21
T18N, R1E

▲
 Section 28
 T18N, R1E

PHOTOGRAPHIC DOCUMENTATION

Date of photography: December 14, 2009

The first stone found.



The second stone found.



The lower, record, stone.



The lower, record, stone.



For details and documentation, refer to related sheet "Section Corner Record."

SECTION CORNER RECORD

SE 400-300

BOONE COUNTY SURVEYOR'S OFFICE

State Plane grid coordinates NAD83 (NSRS 2007):

North: 1724808.96 East: 3140643.24 (U.S. survey feet)

Type of monument: Harrison, 4" disk 'Section Corner'

Depth: 1 inch below adjacent road surface

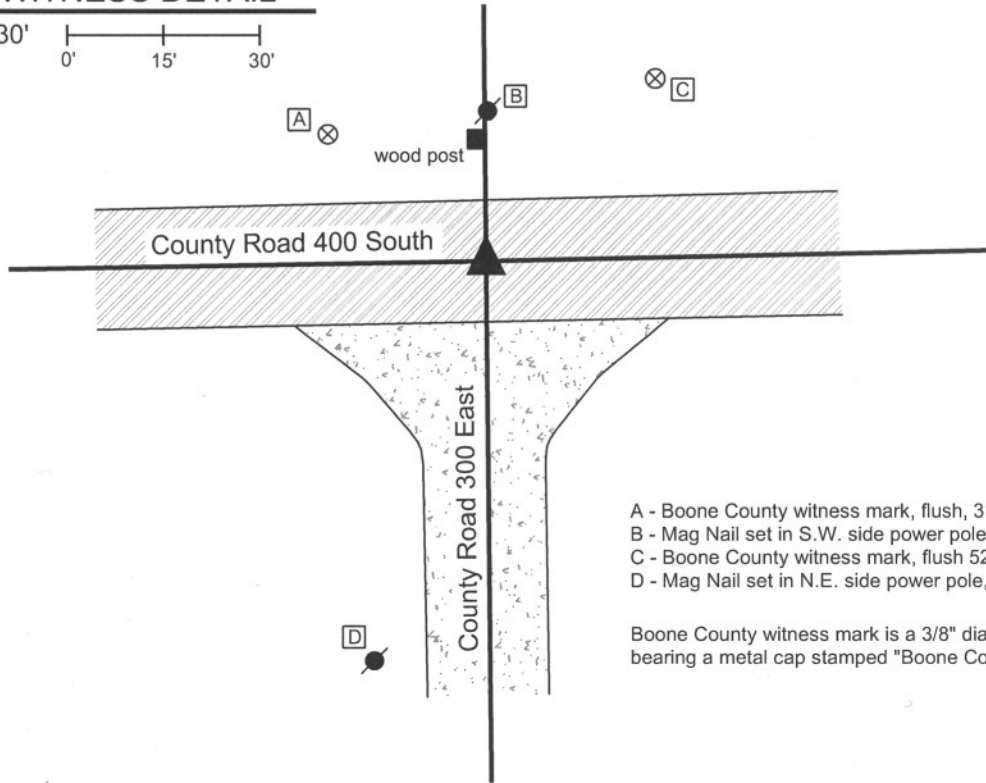
Indiana tie card references:

IN02_T18NR1E21_80 IN02_T18NR1E22_72

IN02_T18NR1E27_00 IN02_T18NR1E28_08

CORNER WITNESS DETAIL

SCALE 1" = 30'



- A - Boone County witness mark, flush, 31.77'
- B - Mag Nail set in S.W. side power pole, 2.0' a.g., 22.04'
- C - Boone County witness mark, flush 52.32'
- D - Mag Nail set in N.E. side power pole, 2.0' a.g., 63.68'

Boone County witness mark is a 3/8" diameter x 2' long rebar bearing a metal cap stamped "Boone County Witness Point."

The harrison monument was set directly over the top, center of a stone found and accepted as marking the corner.

No BCS stone records or tie cards are known for this corner beyond the original establishment of the corner by federal surveyors.

This corner was excavated on May 16, 2008. Prior to excavation a mag nail was visible flush with the road surface at the approximate intersection of the two county roads. Excavation yielded an iron pipe below and slightly N.E. of the mag nail. Further excavation yielded a stone found at 24 inches. This stone measures 14 inches NW-SE and 10 inches NE-SW. The top 6 inches of the stone were exposed at which point the stone remained entirely stable in the clay, indicating that it protrudes deeper into the clay. The top 2 inches of the stone protrude into the gravel base at the bottom of the road. The harrison was set directly over the top, center of the stone. The mag nail was 0.55 foot North and 1.25 foot West of the top, center of the stone and the pipe was 0.85 North and 1.1 foot West.

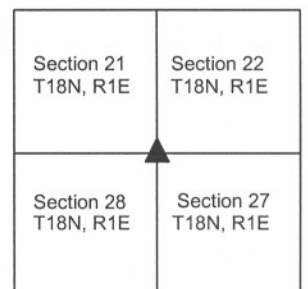
This corner was originally established as a wood post in June, 1820.



Kenneth E. Hedge
 Kenneth E. Hedge, County Surveyor

James S. Swift
 James S. Swift, IN LS 20200054
 March 11, 2009

Perry Township



PHOTOGRAPHIC DOCUMENTATION

Date of photography: May 16, 2008

Corner stone - overhead view from south.



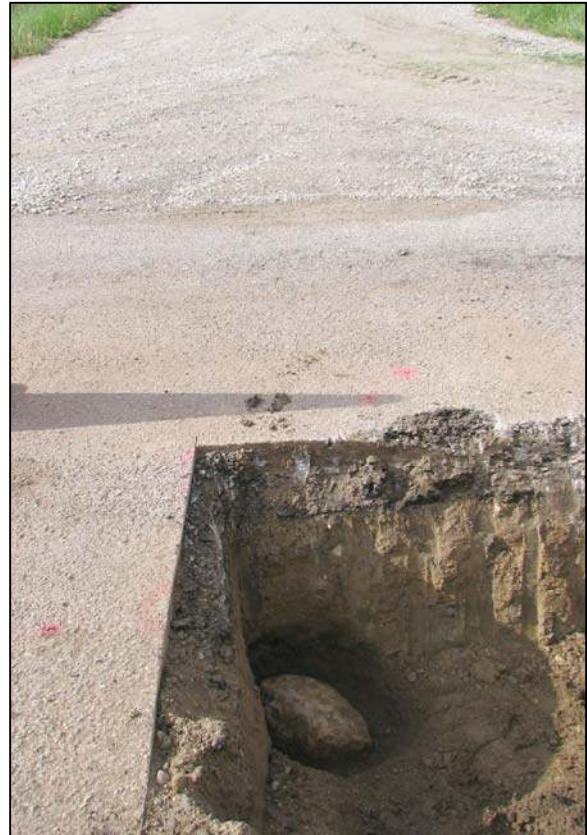
Corner stone - overhead view from west.



View from west, looking across corner stone and along County Road 400 South to the east.



View from north, looking across corner stone to north end of County Road 300 East to the south.



For details and documentation, refer to related sheet "Section Corner Record."

SECTION CORNER RECORD

SE 450-200

BOONE COUNTY SURVEYOR'S OFFICE

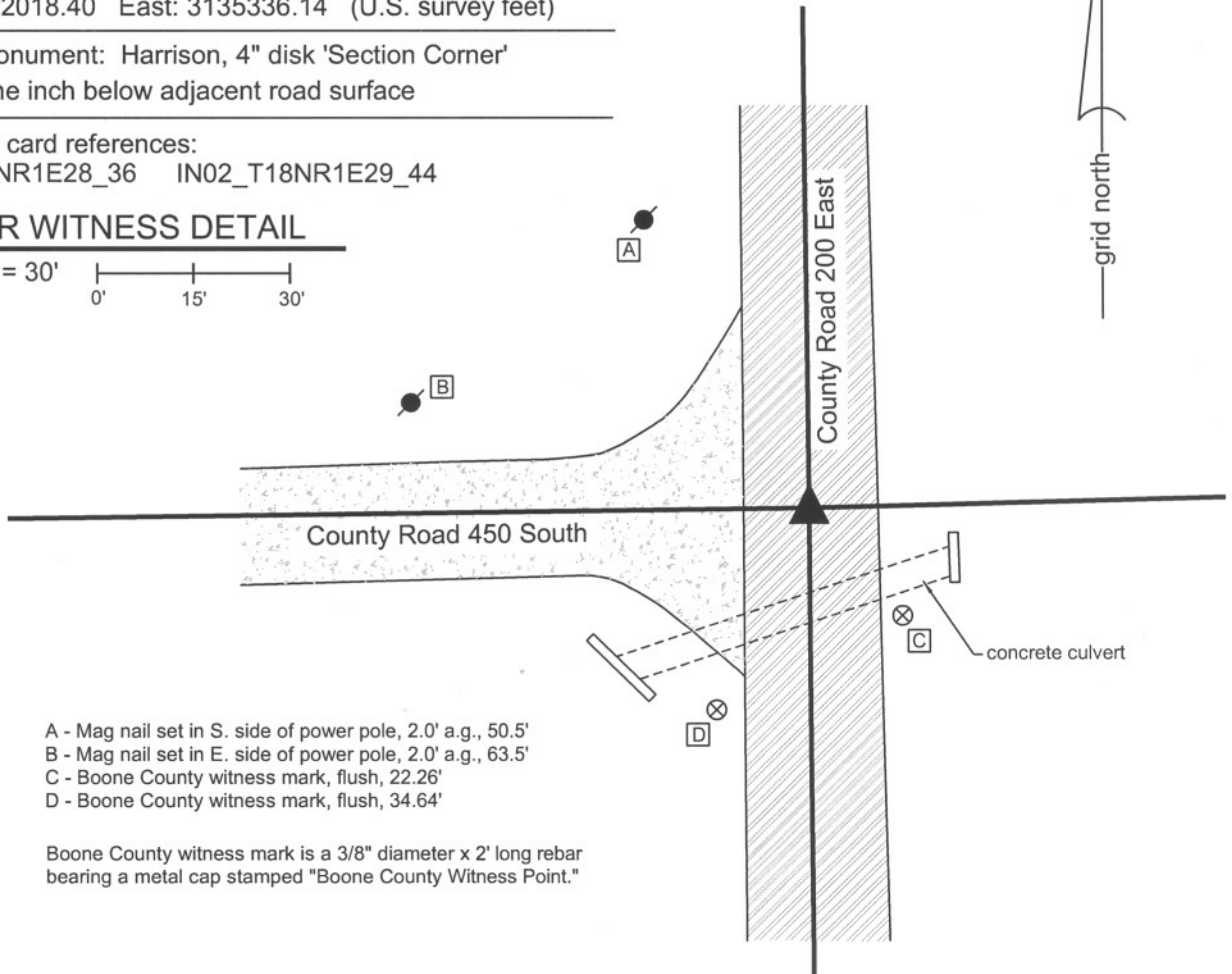
State Plane grid coordinates NAD83 (NSRS 2007):
North: 1722018.40 East: 3135336.14 (U.S. survey feet)

Type of monument: Harrison, 4" disk 'Section Corner'
Depth: One inch below adjacent road surface

Indiana tie card references:
IN02_T18NR1E28_36 IN02_T18NR1E29_44

CORNER WITNESS DETAIL

SCALE 1" = 30'
0' 15' 30'



- A - Mag nail set in S. side of power pole, 2.0' a.g., 50.5'
- B - Mag nail set in E. side of power pole, 2.0' a.g., 63.5'
- C - Boone County witness mark, flush, 22.26'
- D - Boone County witness mark, flush, 34.64'

Boone County witness mark is a 3/8" diameter x 2' long rebar bearing a metal cap stamped "Boone County Witness Point."

The harrison monument was set in place of a mag nail and railroad rail found.

A BCS record of October 13 & 21, 1869 states "Reestablished from Ash stumps. Set a Rock 10,6,5-1/2 marked +, brick under it." A BCS tie card dated July 20, 1968 states "no stone." This corner was excavated on November 10, 2009. Prior to excavation, a Mag nail with a washer was found at 3 inches below grade in a hole in the asphalt. Excavation revealed a section of railroad rail set on end at 9 inches deep, directly below the nail. Though not specifically documented as such, the railroad rail was likely set in association with the creation of the 1968 tie card. No other monuments were found. The material cross-section of the road in this area is that of approximately 7 inches of asphalt over 9 inches of a sandy, fill type dirt. This kind of base material has not been observed during the excavation of other corners. Below this is the layer of clay which has been found under many other corners. However, unlike most corners, the clay is not of a smooth consistency and appears to be mixed with the sandy, fill type dirt. It is noted that a large concrete culvert in under the road approximately 13 feet south of the corner. The culvert is approximately 4.5 feet wide by 2 feet high. Given the presence of the culvert, the unusual base material of the road and the apparent mixing of the dirt and clay, it is reasonable to conclude that the road bed in this immediate vicinity was disturbed during construction of the concrete culvert and that the record stone was removed at the same time. The area of excavation was 4 feet E-W by 6 feet N-S to a minimum depth of 26 inches, well into the clay, though as noted, the clay appeared to be disturbed to this depth.

The harrison monument was set in place of the mag nail and railroad rail, both of which were removed during excavation. This corner was originally established as a wood post in June, 1820.

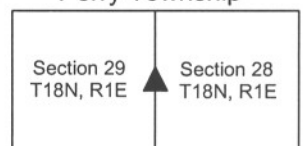


Kenneth E. Hedge
Kenneth E. Hedge, County Surveyor

James S. Swift
James S. Swift, IN LS 20200054

July 14, 2010

Perry Township



SECTION CORNER RECORD

SE 450-300

BOONE COUNTY SURVEYOR'S OFFICE

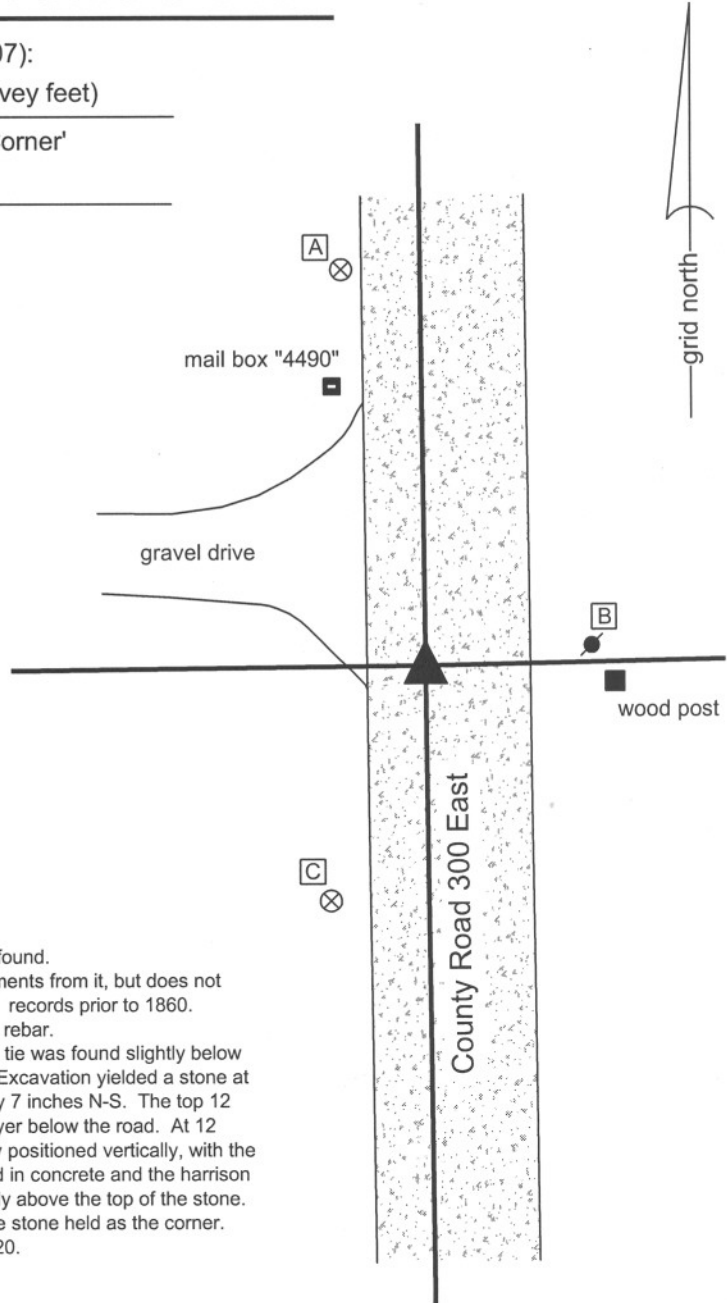
State Plane grid coordinates NAD83 (NSRS 2007):
North: 1722150.56 East: 3140670.32 (U.S. survey feet)

Type of monument: Harrison, 4" disk 'Section Corner'
Depth: 4 inches below gravel road surface

Indiana tie card references:
IN02_T18NR1E27_36
IN02_T18NR1E28_44

CORNER WITNESS DETAIL

SCALE 1" = 20'



- A - Boone County witness mark, flush, 42.17'
- B - Mag nail set in W. side power pole, 1.8' a.g., 16.8'
- C - Boone County witness mark, flush, 26.40'

Boone County witness mark is a 3/8" diameter x 2' long rebar bearing a metal cap stamped "Boone County Witness Point."

The Harrison monument was set directly over the top of a stone found. A BCS record of June 25, 1852 shows this corner and measurements from it, but does not specify the monument. This is consistent with other similar BCS records prior to 1860. A BCS tie card dated May 19, 1994 shows the corner as being a rebar. A 1/2 inch diameter rebar which fits with the one remaining 1991 tie was found slightly below the gravel road. This corner was excavated on May 14, 2008. Excavation yielded a stone at 9 inches deep. The top of the stone measures 10 inches E-W by 7 inches N-S. The top 12 inches of the stone were exposed, 8 of which were in the clay layer below the road. At 12 inches exposed, the stone remained entirely stable and is clearly positioned vertically, with the bottom deeper yet in the clay. The top of the stone was encased in concrete and the harrison was truncated at 5 inches and set in a column of concrete directly above the top of the stone. The rebar was 2.1 feet south and 0.6 feet east of the point on the stone held as the corner. This corner was originally established as a wood post in June 1820.

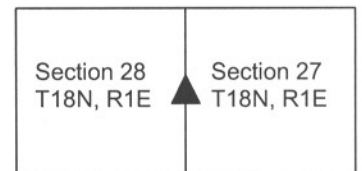


Kenneth E. Hedge
Kenneth E. Hedge, County Surveyor

James S. Swift
James S. Swift, IN LS 20200054

March 11, 2009

Perry Township



PHOTOGRAPHIC DOCUMENTATION

Date of photography: May 14, 2008

Corner stone - view from south as stone is first exposed.



Corner stone - view from south with most of stone exposed.



View from east looking across stone and into occupation line in form of hedge to the east.



Corner stone - view from east.



Corner stone - close up from east.



For details and documentation, refer to related sheet "Section Corner Record."

SECTION CORNER RECORD

SE 500-200

BOONE COUNTY SURVEYOR'S OFFICE

State Plane grid coordinates NAD83 (NSRS 2007):

North: 1719359.75 East: 3135360.29 (U.S. survey feet)

Type of monument: Harrison, 4" disk 'Section Corner'

Depth: One inch below adjacent road surface

Indiana tie card references:

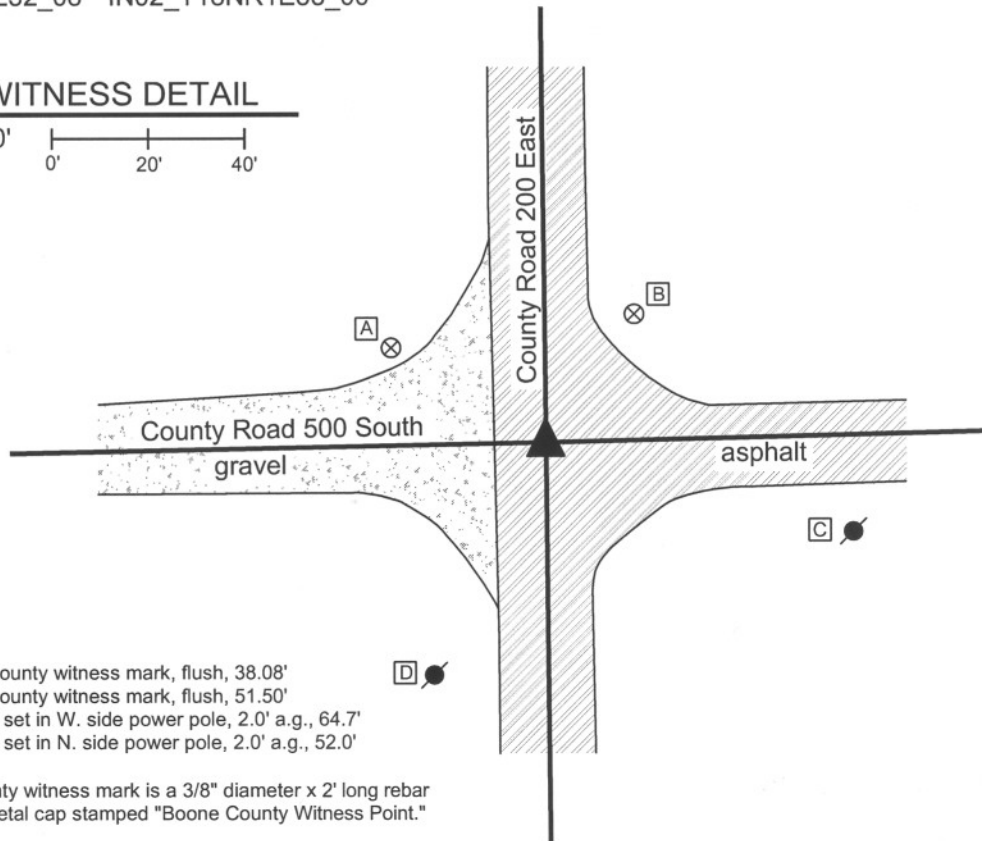
IN02_T18NR1E28_72 IN02_T18NR1E29_80

IN02_T18NR1E32_08 IN02_T18NR1E33_00



CORNER WITNESS DETAIL

SCALE 1" = 40'



- A - Boone County witness mark, flush, 38.08'
- B - Boone County witness mark, flush, 51.50'
- C - Mag nail set in W. side power pole, 2.0' a.g., 64.7'
- D - Mag nail set in N. side power pole, 2.0' a.g., 52.0'

Boone County witness mark is a 3/8" diameter x 2' long rebar bearing a metal cap stamped "Boone County Witness Point."

The harrison monument was set over a stone found.

A BCS record of August 19 - 20, 1867 states "Reestablished in line 40.15 from D & D Sect. 29. Set a Rock 13,12,11." A BCS tie card dated July 20, 1968 states "no stone." This corner was excavated on November 10, 2009. Prior to excavation, a road nail was found in a hole in the asphalt 4 inches below grade. Excavation revealed a railroad rail on end at 8 inches deep below the nail. Further excavation revealed the record stone found at 21 inches deep, north of the rail. The stone is embedded in the clay layer below the road, protruding approximately 3 inches out of the clay into the base of the road. The stone measures 13 inches NE-SW by 11 inches NW-SE and is 12 inches tall. No specific markings were found on the stone, nor were any mentioned in the record. The harrison monument was set over the the approximate top center of the stone. The nail and railroad rail, both removed during excavation, had been 1.5 feet south and 0.7 foot east of the stone.

This corner was originally established as a wood post in June, 1820.



Kenneth E. Hedge
Kenneth E. Hedge, County Surveyor

James S. Swift

James S. Swift, IN LS 20200054

July 14, 2010

Perry Township

Section 29 T18N, R1E	Section 28 T18N, R1E
Section 32 T18N, R1E	Section 33 T18N, R1E

PHOTOGRAPHIC DOCUMENTATION

Date of photography: November 10, 2009

View of the stone as first exposed.
View from above and east.



View of the stone after drying in the air briefly.
View from above and east.



View from the south, looking across the stone
and north along County Road 200 East.



For details and documentation, refer to
related sheet "Section Corner Record."

SECTION CORNER RECORD

SE 500-300

BOONE COUNTY SURVEYOR'S OFFICE

State Plane grid coordinates NAD83 (NSRS 2007):

North: 1719492.96 East: 3140701.81 (U.S. survey feet)

Type of monument: Harrison, 4" disk 'Section Corner'

Depth: 4 inches below adjoining gravel road surface.

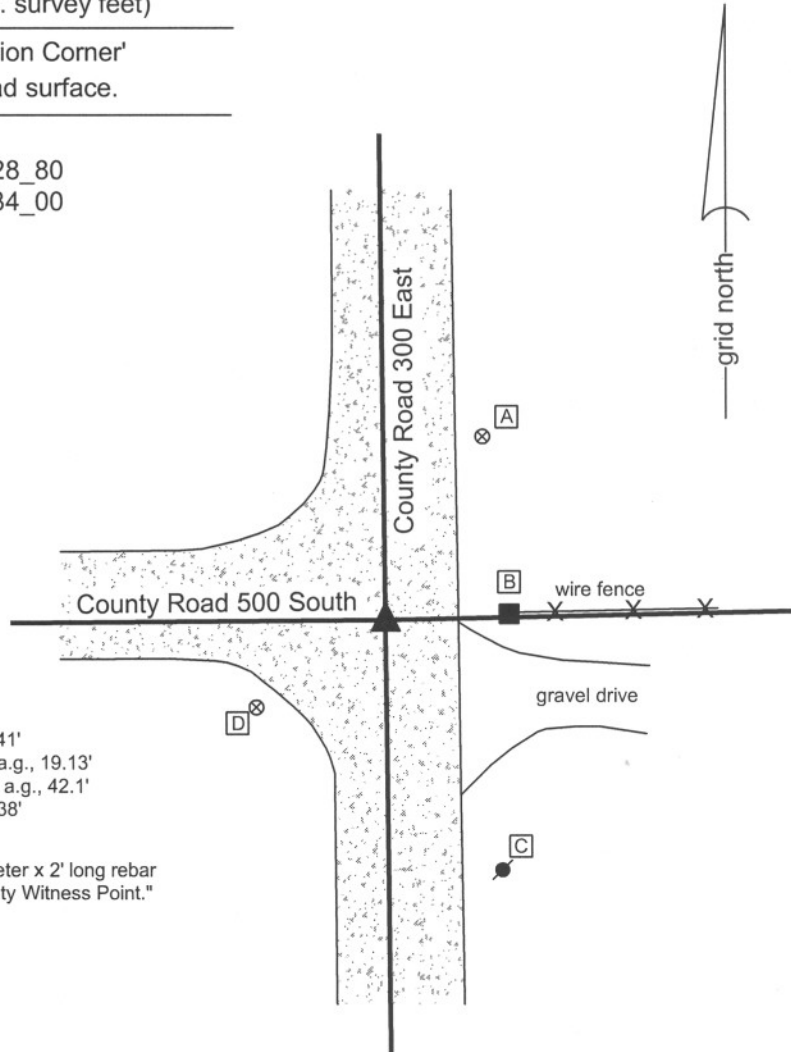
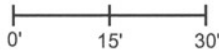
Indiana tie card references:

IN02_T18NR1E27_72 IN02_T18NR1E28_80

IN02_T18NR1E33_08 IN02_T18NR1E34_00

CORNER WITNESS DETAIL

SCALE 1" = 30'



- A - Boone County witness mark, flush, 32.41'
- B - Mag nail set in N. side wood post, 0.5' a.g., 19.13'
- C - Mag nail set in N. side power pole, 1.7' a.g., 42.1'
- D - Boone County witness mark, flush, 24.38'

Boone County witness mark is a 3/8" diameter x 2' long rebar bearing a metal cap stamped "Boone County Witness Point."

The Harrison monument was set over the top, high point of a stone found.

No known BCS records were found for this corner beyond the original establishment of the corner by federal surveyors.

Prior to excavation, a 1/2" diameter rebar was found at the approximate intersection of the two roads and at the extension of the old fence to the east. The source of the rebar is not known. The corner was excavated on May 15, 2008. Excavation yielded a stone found at 16 inches deep. The top of the stone is 15 inches E-W by 11 inches N-S, protruding 2 inches out of the clay base into the gravel sub-base of the road. The top 7 inches of the stone were exposed, at which point the stone remained entirely stable, indicating that it protrudes further into the clay. The Harrison monument was set directly over the top, high point of the stone. The rebar, removed during excavation, was 0.7 feet N and 0.5 feet E of the top, high point of the stone.

This corner was originally established as a wood post in June, 1820.



Kenneth E. Hedge
 Kenneth E. Hedge, County Surveyor

James S. Swift
 James S. Swift, IN LS 20200054

March 11, 2009

Perry Township

Section 28 T18N, R1E	Section 27 T18N, R1E
Section 33 T18N, R1E	Section 34 T18N, R1E

PHOTOGRAPHIC DOCUMENTATION

Date of photography: May 15, 2008

Corner stone - view from above.



Corner stone - view from the south.



View from west, looking across hole to wood end post at the terminus of an old fence to the east. The stone is not visible, but shown by arrow.



View from the east looking across the hole and along County Road 500 South to the west.



For details and documentation, refer to related sheet "Section Corner Record."